



\*only available at the Meadowridge Uniform Shop

## #1 Uniform

Mondays, Fridays, and Special Events

- White dress shirt (short or long-sleeved) *with school tie\**
- Navy school blazer\*
- Tartan kilt *with kilt pin\**
- Navy knee socks *or* Navy tights
- Navy or black cartwheel shorts
- Black slip-on or velcro shoes

- *OR* -

- White dress shirt (short or long-sleeved) *with school tie\**
- Navy school blazer\*
- Grey dress pants *or* Grey dress shorts
- Grey socks
- Black belt *with conservative buckle*
- Black slip-on or velcro shoes

### Optional #1 Items

- Navy or burgundy cardigan\*
- Navy or burgundy pullover\*
- Navy or burgundy vest\*

*Worn with white dress shirt and tie*

## PHE Kit

Days with PHE Class, Athletics, and some Field Trips

- Navy tracksuit jacket\*
- Navy tapered pants\* *or* Navy cuffed sweatpants\*
- Navy athletic shirt\*
- Navy athletic shorts\*
- White athletic socks
- White or navy running shoes
- Gym bag, *crested\**

### Optional PHE Item

- Hoodie, *crested\**

## Other Required Items

- Backpack (no rolling backpacks)
- Warm hat and mittens (seasonal)
- Sun hat and sunscreen (seasonal)
- Personal water bottle (labelled)

## #2 Uniform

Tuesdays, Wednesday, and Thursdays

### Top Options

- White dress shirt (short or long-sleeved) *with school tie\**
- Navy golf shirt (short or long-sleeved)\*
- Hoodie, *crested\**
- Rugby shirt, *crested\**

### Optional #2 Items

- Navy or burgundy cardigan\*
- Navy or burgundy pullover\*
- Navy or burgundy vest\*

*Worn with white dress shirt/tie or navy golf shirt*

### Bottom Option: Kilt

- Tartan kilt *with kilt pin\**
- Navy or black cartwheel shorts
- Navy knee high socks *or* Navy tights
- Black dress shoes

### Bottom Option: Pants

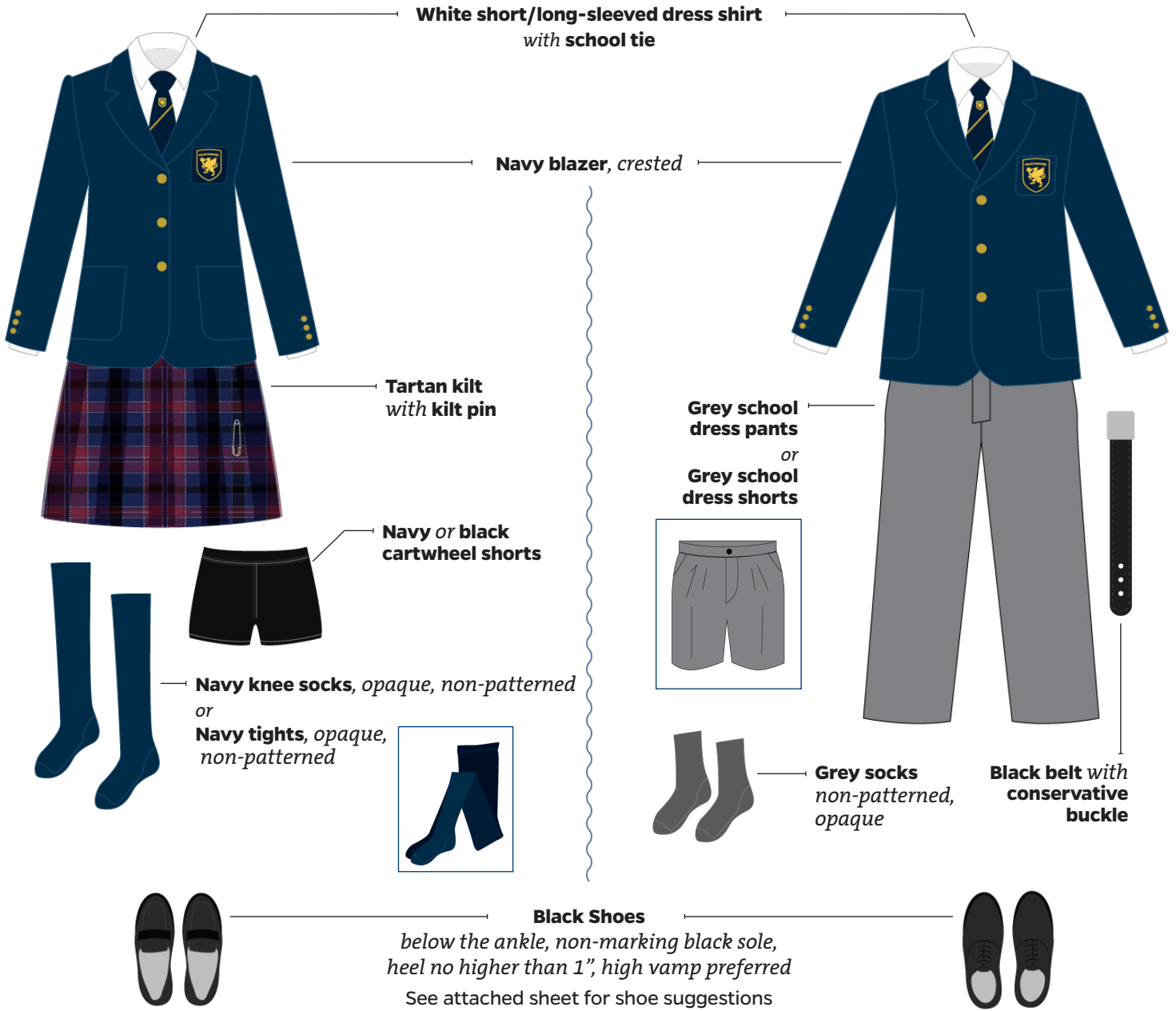
- Grey dress pants
- Grey socks
- Black belt *with conservative buckle*
- Black dress shoes

### Bottom Option: Shorts

- Grey dress shorts
- Grey socks
- Black belt *with conservative buckle*
- Black dress shoes

# MEADOWRIDGE SCHOOL Grade 6 to 10 #1 Uniform

Mondays, Fridays & Special Events



## Optional Add-On Items for #1 Uniform

- 1. Navy/Burgundy cardigan, crested
- 2. Navy/Burgundy pullover, crested
- 3. Navy/Burgundy vest, crested

Items 1, 2, and 3 must be worn with the white dress shirt and tie.



**PLEASE NOTE** The Meadowridge uniform is gender-neutral.

# MEADOWRIDGE SCHOOL Grade 6 to 10 #2 Uniform

Mix and match any top and bottom

Tuesday, Wednesday & Thursday

## #2 Uniform Tops



Navy short-sleeved polo shirt, crested



Hoodie, crested



Rugby Shirt, crested



White short-sleeved dress shirt with school tie



## #2 Uniform Bottoms



Tartan kilt with kilt pin

Navy or black cartwheel shorts



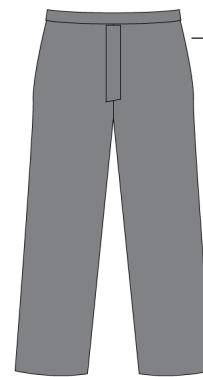
Navy knee socks, opaque, non-patterned or Navy tights, opaque, non-patterned



Grey school dress shorts



Grey socks non-patterned, opaque



Grey school dress pants



Black belt with conservative buckle



Grey socks non-patterned, opaque



Black Shoes

below the ankle, non-marking black sole, heel no higher than 1", high vamp preferred

See attached sheet for shoe suggestions



## Optional Add-On Items for #2 Uniform

- 1. Navy/Burgundy cardigan, crested
- 2. Navy/Burgundy pullover, crested
- 3. Navy/Burgundy vest, crested



Items 1, 2, and 3 must be worn with the white dress shirt/tie or navy golf shirt.

PLEASE NOTE The Meadowridge uniform is gender-neutral.

# MEADOWRIDGE SCHOOL Grade 6 to 10 PHE Kit

Days with PHE Class and some Field Trips



**Navy tracksuit jacket, crested**  
or  
**Navy retro jacket, crested**



**Navy short/long-sleeved athletic shirt, crested**



**Navy athletic shorts, crested**



**White athletic socks, non-patterned, opaque**



**Athletic shoes slip-on or velcro, non-marking sole, minimal colour, no lights**

**Navy tapered pants, crested**  
or  
**Navy cuffed sweatpants, crested**



**Gym bag, crested**

## Optional Add-On Item



**Hoodie, crested**

# MEADOWRIDGE SCHOOL

## Dress Code & Uniform Details

### How to wear the uniform

The uniform must be kept in good condition, i.e. clean, no rips, no large stains, etc. Regardless of what uniform you are wearing on a particular day, you are expected to wear the uniform properly (e.g. – proper shoes, shirt tucked in, appropriate tie/kilt length, etc.)

#### ***Tops (Shirts)***

- Dress shirts must be tucked in at all times. Growing individuals should buy longer dress shirts to avoid them being untucked. The white dress shirt in the uniform is a plain, non-embroidered, non-designer, collared, Oxford cloth shirt
- Golf shirts can be tucked in or not, but if worn untucked they must be an appropriate length. The length of the shirt should be no longer than the wrist when arms are hanging to the sides

#### ***Bottoms (Kilts, pants, shorts)***

- Kilts are to be worn no shorter than 3” (7.5 cm) above the knee. The ‘knee’ is defined as the center of the patella (knee cap)
- Gym shorts should be no shorter than the fingertips when arms are hanging at the sides.

#### ***Outerwear & Seasonal Weather***

- Students who are cold in the school should wear their school sweaters, blazers, or other optional add-on uniform items
- Unbranded outerwear is only allowed during outdoor recess time in extreme weather
- Non-Meadowridge sweaters, sweatshirts, or any other shirt are not acceptable inside the school

#### ***Dress Shoes***

- Footwear must be worn at all times in school
- Solid black shoes are required (no colour accents, stitching, or outsoles)
- Must be below the ankle (no boots)
- Heels must be no higher than 2.5cm (1 inch)
- Leather, leather-like, and fabric shoes are allowed

#### ***PHE & Athletic Shoes***

- Non-marking outersole

#### ***Arriving & Leaving School***

- Upon leaving the bus or other vehicle to come to school, students must be in their full uniforms. Pajama bottoms or sweatpants worn under the kilt or shorts are not acceptable. Navy blue tights are an excellent alternative to the knee socks in the winter months

#### ***Hairstyles & Jewelry***

- Hairstyles, make-up, nail polish, and accessories (earrings, hair ties, jewelery, etc.) should be conservative (light or natural in color) and should not draw additional attention to a particular student
- Earrings must be no more than ½ inch in diameter and length and should be inconspicuous.
- Dangling or large earrings and multiple rings are not appropriate
- No other body or facial piercing is acceptable and students will be asked to remove them, regardless of the healing stage

#### ***Miscellaneous***

- Hats are not worn in school, except in classes where they are part of a costume
- Undergarments must not show any insignia, lettering, designs, etc.
- Tattoos must not be visible at any time.

# MEADOWRIDGE SCHOOL

## Uniform Shop Information

### Uniform Shop FAQs

#### Where can I purchase my child's uniform?

Items can be purchased at the Meadowridge Uniform Shop. Use our checklist and diagrams for required and optional items. Shoes and some other required items are not available in the Uniform Shop.

#### When can I purchase uniform items?

We suggest you book ahead. Book an appointment in July or August by calling or emailing the shop. The first week of school can be busy and some specialty items can take up to six weeks to be delivered.

#### What if we have difficulty finding the right size?

Staff members are happy to help you find the right fit. Book an appointment ahead of time and we can set up a fitting so that your child is comfortable in their uniform. Special sizing can be ordered.

#### Can we purchase or sell gently used uniform items?

Yes, the Gryphon's Emporium is located above our Uniform Shop and is run by our Parent Guild. For questions email [gryphonsemporium@meadowridge.bc.ca](mailto:gryphonsemporium@meadowridge.bc.ca).

#### What is your exchange policy?

Unused/unaltered items in their original condition may be returned or exchanged within 30 days with original receipt. Clearance, custom-made garments, and hosiery are final sale.

#### Can I donate out of date Meadowridge branded clothing?

Meadowridge branded clothing and uniform items no longer sold in the Uniform Shop and Gryphon's Emporium can be donated to the school via the clothing donation box outside the Uniform Shop house. Working with an external charity, these items are donated overseas.

### Meadowridge Uniform Shop

[uniforms@meadowridge.bc.ca](mailto:uniforms@meadowridge.bc.ca) 604.476.3043 [store.meadowridge.bc.ca](http://store.meadowridge.bc.ca)

#### Book an Appointment



Book online, call the store, or send an email

#### Shop Online



[store.meadowridge.bc.ca](http://store.meadowridge.bc.ca)

### Looking for used uniforms? Visit the Gryphon's Emporium

Located on the second floor above our Uniform Shop, the Gryphon's Emporium is run by our Parent Guild volunteers.

For questions email [gryphonsemporium@meadowridge.bc.ca](mailto:gryphonsemporium@meadowridge.bc.ca)



# MEADOWRIDGE SCHOOL

## Grade 6 to 10 Uniform Guide

6-10

### Why do we have uniforms and a dress code?

The dress code is intended to alleviate the pressure on students to conform to trends or fads and create a social setting where personality and intellect take precedence over fashion. It allows students to be free from social pressures and helps create a sense of belonging to Meadowridge.

Please help us build pride in your school by ensuring you wear the proper clothing and maintain it in good order. Our appearance will reflect a positive expression in dress, grooming, and hygiene. It will at all times be modest, respectful of self and others, and appropriate for school and weather conditions.

### What days to wear what uniform

Appropriate dress is expected during the school day (includes all breaks- recess, lunch, support blocks and after school), extra-curricular activities, and at all school sponsored functions.

#### #1 Uniform (Formal)

- Mondays and Fridays
- When representing the school
- Special Events (ex. all-school assemblies)
- Some field trips

#### #2 Uniform (Informal)

- Tuesdays, Wednesdays, and Thursday
- Some field trips

#### PHE Kit

- During PHE (Physical, Health & Education) class
- Athletics events (with team jersey if applicable)
- Some field trips

Students in Grade 6 to 10 are allowed to come to school in PHE strip if participating in PHE first block. Students are also allowed to go home in gym strip if PHE is their last block of the day.

All students in Grade 6 to 10 are expected to change in and out of their gym strip for PHE classes and CAS blocks (if applicable).

### Theme Days & Spirit Days

On occasion, theme days (previously non-uniform) are held. During those days, students are expected to dress in accordance with the theme chosen for that day. Alternatively, students are welcome to wear their school uniform.

On Spirit Days Grade 6 to 10 students can either wear their House Shirt with uniform bottoms or the PHE kit.

### Lost & Found Items

It is imperative that all uniform items are clearly labeled with the students full name. If you accidentally take an item home that does not belong to you, please return it to its rightful owner. All items not claimed will be donated to charity at the end of each term and all non-labelled uniform items will be donated to the Gryphon's Emporium.

### Uniform Infractions

Students will be informed immediately of any uniform infractions and are expected to make the appropriate changes to ensure all uniform infractions are addressed.

In the event of repeated occurrences, the student's advisory teacher will notify parents to address the matter. If the infraction still continues, the Middle School Principal or Associate Principal will arrange a meeting with the student, parents, and advisory teacher. Disciplinary action may follow. Parents may also be contacted should a student arrive to school without the appropriate uniform items.

## Spirit Merchandise

### Spirit Days and Special Events



Everyone in the Meadowridge community is a member of one of our four Houses: **Alouette, Fraser, Kanaka, or Whonnock**. Students develop strong ties to their fellow Housemates and together they participate in challenges and contests to earn point towards the highly-coveted House Cup, awarded at the end of the year to the House with the most points. All students, in every grade, contribute to their House's overall total by competing in competitions and contests throughout the year.

**The first House Shirt is a gift to new students. Any additional House Shirts can be purchased at the uniform shop.**



### Our Mascot, Gryph

At Meadowridge School, the Gryphon defends our students while remaining a symbol of the many virtues to which we aspire: gentleness, nobility, vigilance, strength, and enlightenment. Its likeness secures, inspires, and protects us.

You will often see Gryph visit during our Spirit Days and special events at the school.