

NORTHWESTERN REGIONAL HIGH SCHOOL

100 Battistoni Drive
 Winsted, Connecticut 06098
 (860)379-8525
 CEEB CODE: 070962

Steven K. LePage
Superintendent

Gary B. Franklin
Principal

Andrew P. Bakulski
Assistant Principal

Daniel P. Carroll
Assistant Principal

2023-2024 PROFILE



Lori A. Foote
Director of School Counseling

Thea Davidson
Amy Dressel
Trina McHugh
School Counselors

Michelle Derochick
School Counseling Assistant

OUR COMMUNITY

Regional School District No. 7 is composed of four rural-suburban towns: Barkhamsted, Colebrook, New Hartford and Norfolk. The district, consisting of 157 square miles, is located twenty miles west of Hartford and has a population of approximately 13,400.

SCHOOL AND FACULTY

Northwestern Regional High School is a comprehensive public 9-12 school which operates under a House plan. Opened in 1958, the school is accredited by the New England Association of Secondary Schools and Colleges. The school campus of 42 acres includes two grade 9-12 Houses. Enrollment in grades 9-12 is currently 537. Ninety-five percent of the professional staff have a Master's degree. The average class size in the academic program is 25. The school performs exceptionally well on a yearly basis scoring well above national and state averages on the SAT and AP testing. For the past couple of years, Northwestern has been recognized by the College Board as an AP Honor Roll School for the increase in the percentage of students taking an AP course and the high percentage of students that score a 3 or better on an AP test. Additionally, the Connecticut State Department of Education nominated Northwestern High School for the National Blue Ribbon Award for Exemplary High Performance. This extraordinary recognition was earned for multiple years of high student achievement across 12 performance indicators and for our supportive school culture.

PROGRAM/OFFERINGS

The school curriculum is both flexible and encompassing, offering numerous one-semester, as well as full-year courses at introductory through advanced levels. The school operates on a six period, drop two, A/B/C/D day schedule. Six 55-minute periods meet on alternating days for thirty-six weeks per one credit course: ½ credit is given for a one-semester subject and ¼ credit for each year of physical education and ¼ credit for wellness. Marking periods are every 9 weeks. Laboratory work is required in all science courses. The school is academically rigorous and continually seeks to provide innovative opportunities for students. We were the first school in the state to open a bank branch inside the school. The bank is cooperatively staffed by bank employees and students who are enrolled in an Honors Banking class. The school is home to a regional Agricultural Education Program which draws students from surrounding districts.

CREDITS AND GRADES

Students graduating in 2024 must earn 25 credits for graduation. These include 9 credits in Humanities (which includes 4 English credits, 3 Social Studies credits which must include 1 credit of U.S. History and ½ credit of Civics, and 2 Humanities elective credits), 9 credits in STEM (which includes 3 Math credits, 3 Science credits including 1 credit of Biology, and 3 STEM elective credits), 1 World Language credit, 1 credit in Physical Education and 1 credit in Wellness, 3 open elective credits, and 1 Mastery Based Diploma Assessment credit. Students receiving honors must maintain at least a "B" average. All failing grades are reported on the school transcript. Students who withdraw from a semester course in the beginning 5 weeks or from a full year course in the beginning 8 weeks may have that course removed from their record without penalty. Thereafter, withdrawals are reported as a "WF" on the transcript. During distance learning in 2020 due to COVID 19, the lowest grade a student could earn in the second semester was a 50. In some instances, students received a P.

GRADE SYMBOLS:	(A+) = 97-100	(A-) = 90-92	(B) = 83-86	(C+) = 77-79	(C-) = 70-72	(D) = 63-66	(F) = 59 or Below
	(A) = 93-96	(B+) = 87-89	(B-) = 80-82	(C) = 73-76	(D+) = 67-69	(D-) = 60-62	

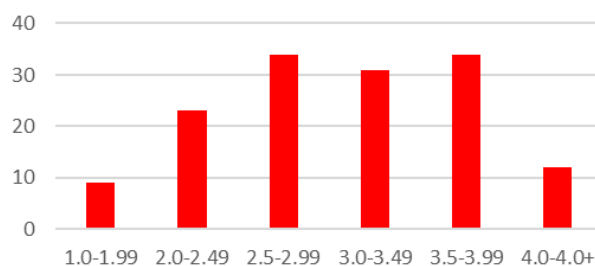
Honors courses are signified by an "H" or "Hon". A "C" or "G" following a course title indicates college preparatory or general level of difficulty respectively. University of Connecticut Early College Experience courses are signified by "UCONN". Advanced Placement courses are designated by "AP".

CLASS RANK: Our grading system differentiates in weight between AP/UCONN, honors, college preparatory, general and remedial level course work. A weighted GPA and class rank is reported on the high school transcript at the end of six semesters. Cumulative GPA and class rank are based solely on courses completed at Northwestern Regional High School and transfer students are not included in the class ranking.

Information on Class of 2023

Class Size:	159
Four Year College	45%
Two Year College	31%
Career/Technical/Trade	7%
Military	5%
Employment	12%

Weighted GPA Distribution Chart
 Class of 2023



SAT School Day MEAN Scores

Class of 2024

Total Class N = 132

SAT Evidenced-Based Reading/Writing: 522

SAT Math: 528

AP Scores 2023

83 students took a total of 137 exams in 13 subject areas.

81% earned a score of 3 or higher

37% earned a score of 5

**Northwestern Regional High School students have been
offered admission to the following colleges in the past 4 years (Partial list)**

Alfred University	Keene State College	Savannah College of Art & Design
American School of Equine Dentistry	La Salle University	Seton Hall University
American University	Lafayette College	Siena College
Arizona State University	Lasell College	Simmons College
Bentley College	Lees-McRae College	Smith College
Berklee College of Music	Loyola University, Chicago	Southern Connecticut State University
Boston College	Loyola University, Maryland	Southern New Hampshire University
Brandeis University	Lyme Academy College of Fine Arts	Springfield College
Brigham Young University - Hawaii	Lynchburg College	St Bonaventure University
Brown University	Lyndon State College	Stonehill College
Bryant & Stratton College	Manhattan College	Suffolk University
Bryant University	Marist College	SUNY Colleges
Butler University	Marquette University	Susquehanna University
Carnegie Mellon University	Marymount Manhattan College	Syracuse University
Castleton University	Massachusetts College Art & Design	Temple University
Catawba College	Massachusetts College of Liberal Arts	The College of Saint Rose
Central Connecticut State University	Mass College of Pharmacy/Health Sci	The Ohio State University
Clark University	Massachusetts Maritime Academy	Toronto Metropolitan University
Clarkson University	McGill University	Trinity College
Clemson University	Merrimack College	Tunxis Community College
Coastal Carolina University	Monmouth University	Union College
Colby-Sawyer College	Montana State University	United States Coast Guard Academy
College of the Holy Cross	Mount Holyoke College	United States Naval Academy
Cornell University	Mount Saint Mary College	University of California
Curry College	Mount Saint Mary's University	University of Central Florida
Dartmouth College	Naugatuck Valley Community College	University of Connecticut
Dickinson College	New College of Florida	University of Delaware
Drew University	New England College	University of Hartford
Drexel University	New England Institute of Art	University of Maine
Duchess Community College	New England Institute of Technology	University of Maine, Orono
Duke University	New York University	University of Massachusetts
Duquesne University	Nichols College	University of Minnesota
East Carolina University	Northeastern University	University of Nebraska - Lincoln
Eastern Connecticut State University	Northwestern CT Community College	University of New England
Elms College	Northwestern University	University of New Hampshire
Elon University	Norwich University	University of New Haven
Emory & Henry College	Ohio Wesleyan University	University of North Carolina, Wilmington
Emmanuel College	Old Dominion University	University of Notre Dame
Endicott College	Pace University	University of Pittsburgh
Fairfield University	Palm Beach Atlantic University	University of Rhode Island
Fairleigh Dickinson University	Paul Smiths College of Arts & Sciences	University of Rochester
Fisher College	Pennsylvania State University	University of Saint Joseph
Flagler College	Philadelphia University	University of South Carolina
Florida Atlantic University	Plymouth State College	University of Southern California
Florida Gulf Coast University	Purdue University	University of Tampa
Florida State University	Quinnipiac University	University of Tennessee Knoxville
Fordham University	Regis College	University of Vermont
Franklin Pierce College	Rensselaer Polytechnic Institute	University of Virginia
George Mason University	Rhode Island College	University of Wisconsin, Madison
George Washington University	Rhode Island School of Design	Vanderbilt University
Georgetown University	Ringling College of Art & Design	Villanova University
Georgia Military College	Rochester Institute of Technology	Virginia Tech
Gettysburg College	Roger Williams University	Wake Forest University
Goodwin University	Sacred Heart University	Wells College
Gordon College	Saint Anselm College	Wentworth Institute of Technology
High Point University	Saint Joseph College, Maine	Western Connecticut State University
Hofstra University	Saint Joseph's University	Western New England College
Ithaca College	Saint Michael's College	Westfield State College
James Madison University	Salve Regina University	Wheaton College, MA
Johnson & Wales University	San Diego State University	Worcester Polytechnic Institute