



The Aurora
1956

THE AURORA

**Memories of
Incarnate Word Academy**

Corpus Christi, Texas

1955-1956

Volume 32

CORPUS CHRISTI ABBEY
STAR ROUTE, BOX A-38-A
SANDIA, TEXAS 78383

A Private High School for Girls

Conducted by

**The Sisters of the Incarnate Word
and Blessed Sacrament**

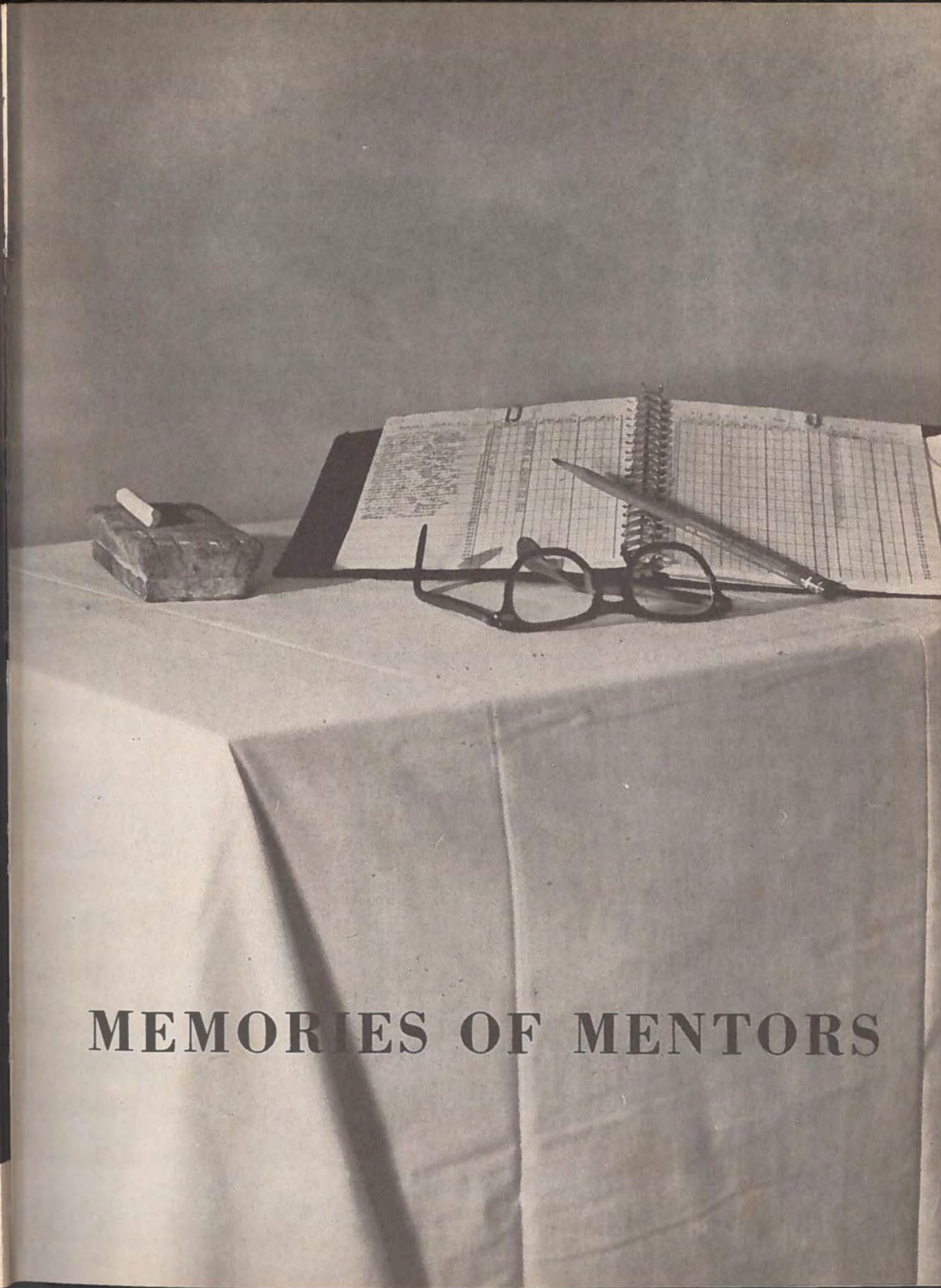
CONTENTS

DEDICATION	Page 2
HIS EXCELLENCY	Page 4
MEMORIES OF MENTORS	Page 5
MEMORIES OF MI-LADIES	Page 15
Seniors	Page 29
Juniors	Page 39
Sophomores	Page 45
Freshmen	
MEMORIES OF MEETINGS	Page 56
Student Council	Page 57
Beaker Breakers	Page 58
Sodality	Page 59
Junior Confraternity of Christian Doctrine	Page 60
The Crown Staff	Page 61
The Aurora Staff	Page 62
Band and Pep Squad	Page 63
Choir and Schola	Page 64
The Angels Basketball Team	Page 65
The Angels Softball Team	Page 66
The Mothers' Club	Page 67
I.W.A. Alumnae Association	Page 68
The Boarders' Club	
MEMORIES OF BIG MOMENTS	Page 70
September	Page 72
October	Page 74
November	Page 76
December	Page 78
January	Page 80
February	Page 82
March	Page 84
April	Page 86
May	Page 88
GRADUATION	Page 89
ADVERTISEMENTS	Page 118
AUTOGRAPHS	Page 120
SENIOR CLASS	

The 1956 AURORA is lovingly dedicated to Reverend Mother Mary Patricia, Superioress General of the Congregation of the Incarnate Word and Blessed Sacrament, during whose term of office the dream of a new and beautiful Incarnate Word Academy has become a magnificent reality.



HIS EXCELLENCY
THE MOST REVEREND M. S. GARRIGA, D.D., L.L.D.
Bishop of Corpus Christi



MEMORIES OF MENTORS



Sister Mary George, *Principal*

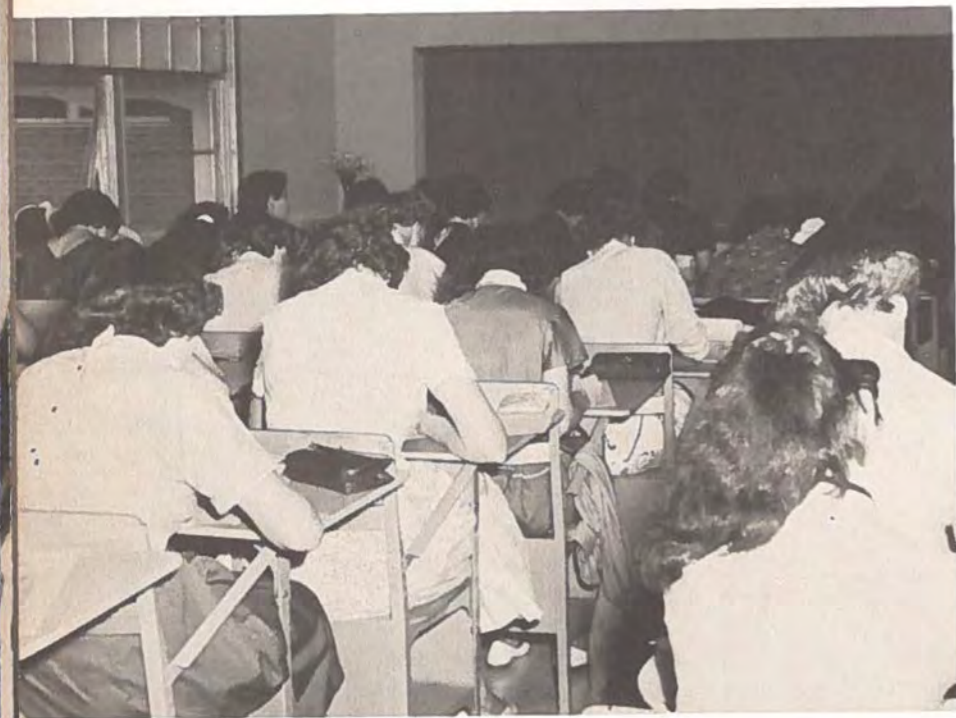
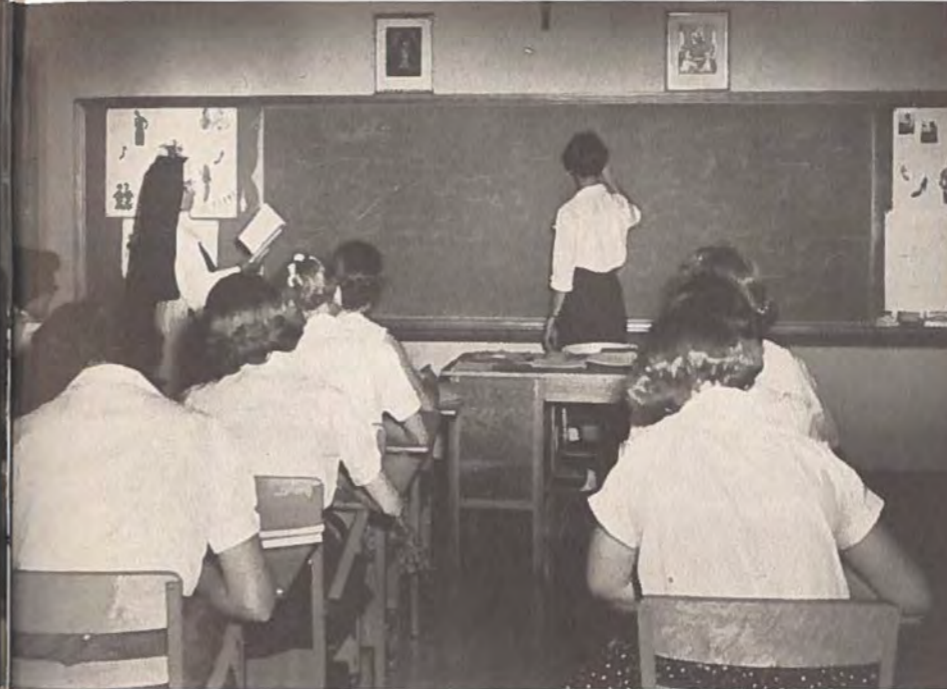
... teaches music appreciation and Spanish.



... teaches religion, shorthand and typing.
... sponsors the Sodality of Our Lady of Grace.



Sister Mary Xavier



... teaches government and world history.
... sponsors the Senior Class and the Civics Club.

Sister Mary Stanislaus, *Registrar*



Sister Mary Doloretta



... teaches religion.



Sister Anna Maria

... teaches religion, algebra and bookkeeping.
... sponsors the Freshman "A" Class.



... teaches home economics



Sister Mary Elizabeth



... teaches Spanish.

Sister Mary Emmanuel



Sister Mary Joan

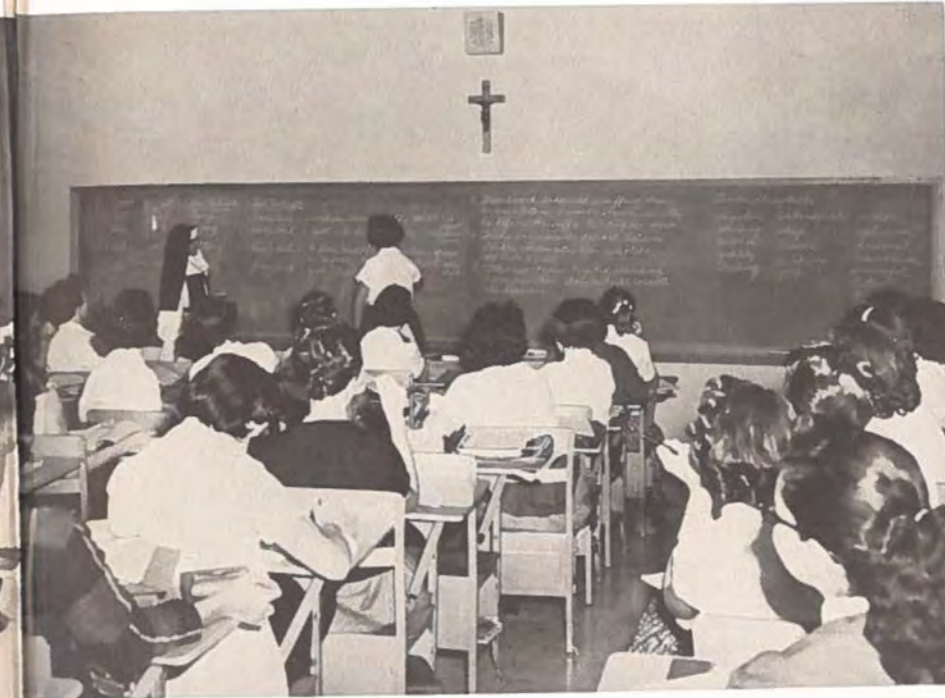


... teaches piano.



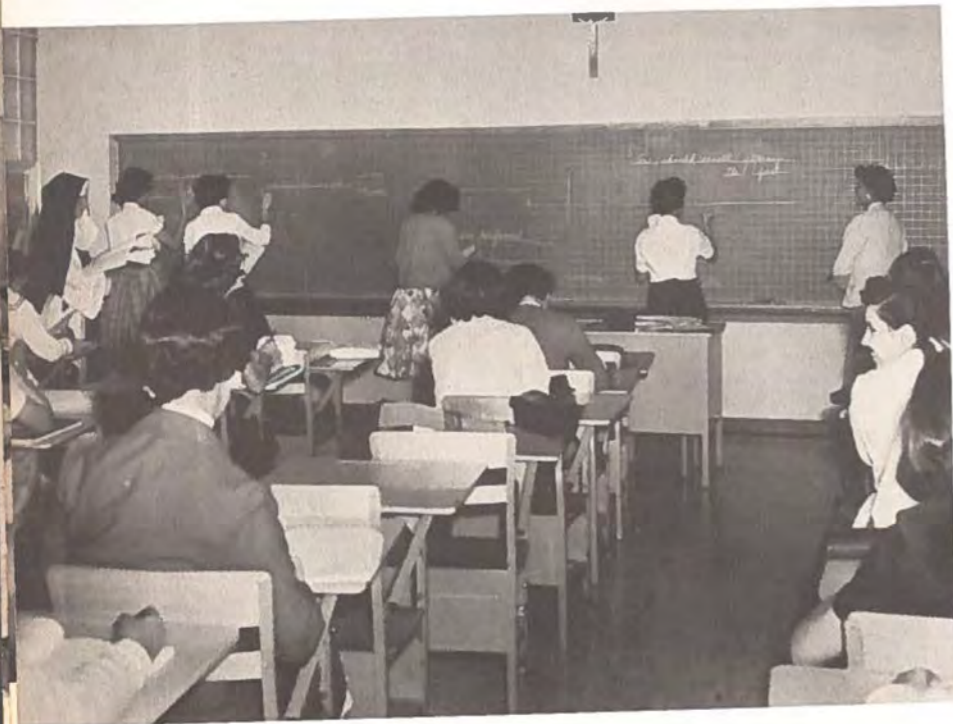
Sister Jeanne Francis

... teaches chemistry, biology, general science, journalism.
... sponsors The Angels, Beaker Breakers, The Crown,
The Aurora, and The Alumnae Association.



Sister Mary Luke

... teaches religion, English and Latin.
... sponsors the Sophomore Class and the Junior Confraternity
of Christian Doctrine Helpers.



Sister Agnes Marie

... teaches religion, English, speech, and general math.
... sponsors the Student Council, the Junior Confraternity
of Christian Doctrine, and the Junior "A" Class.



Sister Mary Anne



... teaches religion, typing and general math.
... sponsors the Junior "B" Class and the Junior Confraternity
of Christian Doctrine Apostles.



Sister Adrian Clare

... teaches English, Georgian Chant
... sponsors Freshman B Class, the Schola



... teaches band
... sponsors Combined Band, Cavalier Pep Squad



Mr. Dwight W. McCready

His Excellency, the Most Reverend M. S. Garriga, D.D., L.L.D., our beloved Bishop and good friend, opened the school year for us.



... teaches Choir.
... sponsors Traveling Choir and Ensembles.

Mrs. Tom Boyd, Jr.

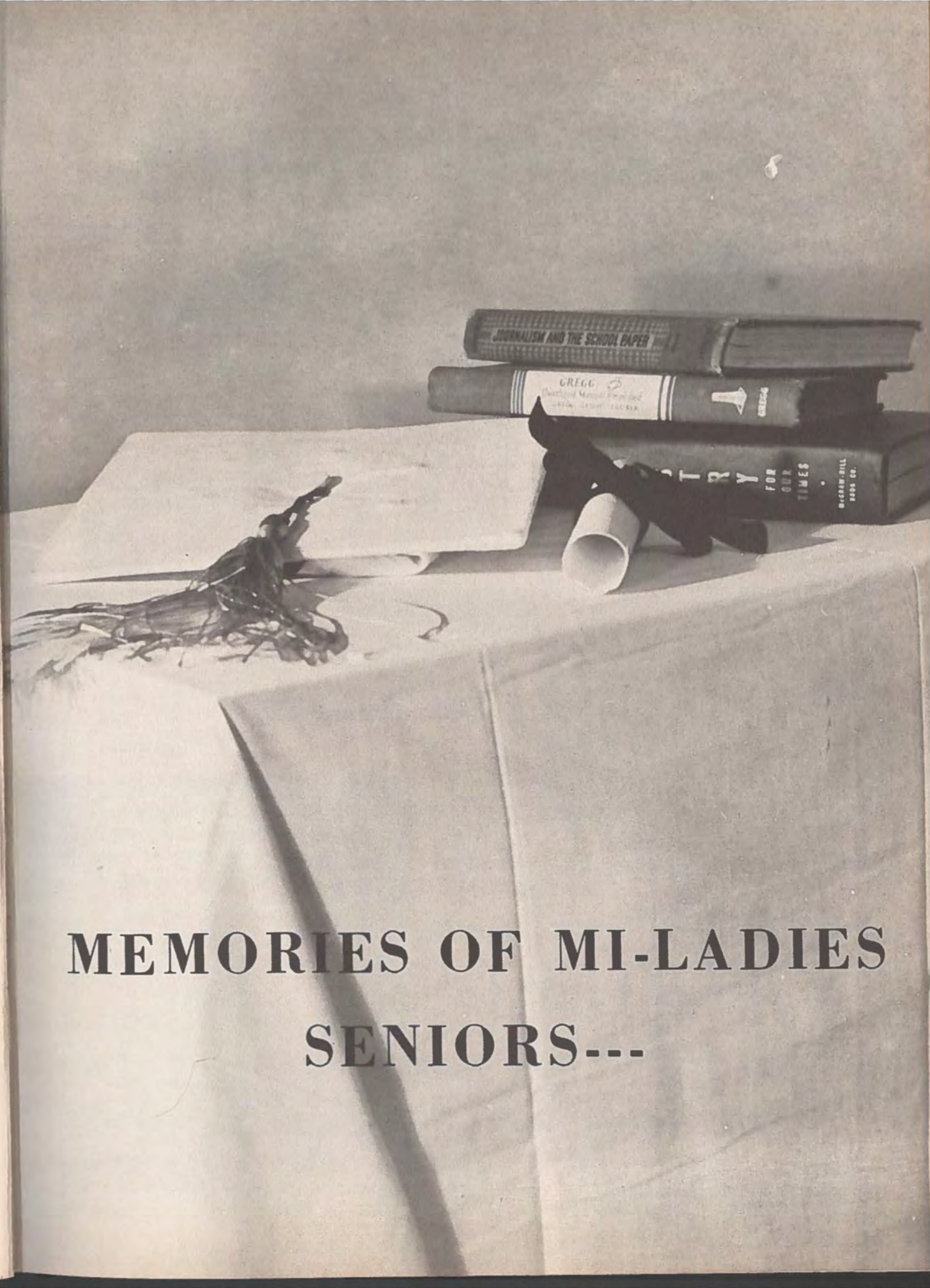


Father Clark is one of four priests who teach religion class once a week at I.W.A. Other priests are Father Alvin Tengler, Father Thomas Meaney, and Father Patrick Higgins.

Rev. Father Robt. Clark



Scenes of the school
which are familiar and
very dear to us are:
The classrooms, halls,
and the spacious library.



MEMORIES OF MI-LADIES SENIORS---



Senior Class Officers Are:

Carolyn Smith, *President*; Mary Nidia Rodriguez, *Student Council Representative*; Elia Villarreal, *Secretary*; Charlotte Guerra, *Student Council Representative*; and Gloria Walters, *Vice-President*. Absent: Mary Margaret Kuntscher, *Treasurer*; Susan Scheuer, *Reporter*; and Sandra Sanders, *Parliamentarian*.

SENIOR ACHIEVEMENTS

Valedictorian	Marie Durbin
Salutatorian	Patsy Riley
Student Council President	Gloria Walters
Student Council Vice-President	Elia Villarreal
All-City Student Council	Charlotte Guerra
All-City Student Council Corresponding Secretary	Gloria Walters
Student of the Month, September	Elaine Schonefeld
Student of the Month, January	Joyce Ann Ahlers
Glee Club Student Director	Charlotte Guerra
Glee Club Assistant Director	Gloria Walters
Glee Club President	Christine Rachal
Glee Club Vice-President	Mary Lu Link
Glee Club Secretary-Treasurer	Susan Scheuer
Glee Club Senior Representative	Sharon Scott
Glee Club Reporter	Roberta Smith
Civics Club President	Patsy Riley
Civics Club Secretary	Mary Nidia Rodriguez
EXTENSION'S Teen Board Representative	Betty Kay Morris
Junior C.C.D. Secretary	Susan Scheuer
Junior C.C.D. Teacher's Chairman	Patsy Kusenberger
Mardi Gras Princesses	Elaine Kaler, Lorene Foyt, Shirlene Skrobarcek, Zaida De Leon, Carolyn Smith, Diane Fawcett
Beaker Breakers President	Mary Rose Horrell
Beaker Breakers Secretary	Rose Marie Orsak
Beaker Breakers Treasurer	Gloria Walters
Beaker Breakers Reporter	Adela Gonzalez
Beaker Breakers Social Chairman	Elia Villarreal
Beaker Breakers Program Chairman	Monica Delahoussaye
Sewing Contest, First Place Winner	Elia Villarreal
Betty Crocker Homemaker of Tomorrow	Carol Hedrick
Excellent Rating at Speech Festival	Alice Kaye Rich
Teen's Against Polio Representative	Patsy Riley
Our Lady of Grace Sodality Parliamentarian	Carolyn Smith
Medical Essay Contest, First Place	Norma Jimenez
Advertising Club Essay Contest, First Place	Frances Lauer



MOST BEAUTIFUL
CRISTINA MONTEMAYOR



MOST REPRESENTATIVE
GLORIA WALTERS



MOST POPULAR
ROBERTA SMITH



JOYCE ANN AHLERS



MARY STELLA ALVAREZ

Confraternity 2, 3, 4; Glee Club 3, 4; Beaker Breakers 1; Basketball team 2.



ESPERANZA ARREDONDO

Confraternity 2, 4; Beaker Breakers 2; Boarders' Club 4, Treasurer 4, Reporter 4; Crown Staff 4.



MARTA CRESSON

Confraternity 3, 4; Vocation Club 3, 4; Glee Club 3, 4; Sodality 3, 4; Boarders' Club 3, 4, President 4; Pep Squad 3; Latin Club 3; Basketball team 3, 4; Civics Club 4.



MONICA DELAHOUSSAYE

Confraternity 2, 3, 4; Beaker Breakers 1, 2, 3, 4, Reporter 2, President 3; Pep Squad 1, 2; Latin Club 1, 2; Sodality 1, 2, 3; Debate 4.



ZAIDA DE LEON

Confraternity 2, 3; Glee Club 1, 3, 4; Boarders' Club 1, 2; Beaker Breakers 3, Parliamentarian 3; Debate 4; Crown Staff 4; Aurora Staff 4.



CAROL JEAN BROWN

Confraternity 2, 3, 4, President 3; Beaker Breakers 2, Historian 2; Sodality 1, 2, 3, 4; Pep Squad 1, 2; Crown Staff 3, 4.



MARJORIE BROWN

Confraternity 2, 3, 4; Beaker Breakers 1; Sodality 1, 2, 3, 4, President 4; Pep Squad 1, 2; Red Cross 1, 2, 3, 4; Debate 3.



LYLA JEANNE DE VINE

Confraternity 2, 3, 4; Glee Club 1, 2; Band 2, 3, 4; Beaker Breakers 1; Crown Staff 4; Class Parliamentarian 2.



MARIE DURBIN

Confraternity 2, 3, 4; Latin Club 1, 2, Treasurer 1; Boarders' Club 1, 2, 3, 4; Class President 2; Beaker Breakers 2; Vocation Club 2; Band 2, 3, 4.



GERALDINE D'UNGER

Confraternity 2, 4; Sodality 1, 2, 3; Pep Squad 1, 2, 3; Latin Club 1, 2; Beaker Breakers 2; Glee Club 3, 4; Crown Staff 4.



LUCY DURHAM

Confraternity 2, 3, 4; Beaker Breakers 1, 2, 3, 4; Most Popular 1; Basketball Cheerleader 2, 3, 4; Most Beautiful 2; Boarders' Club 2, 3, 4; Vice-President 2, 3; Band 3, 4; Civics Club 4.



DIANE FAWCETT

Confraternity 2, 3, 4; Beaker Breakers 1; Latin Club 1; Sodality 1, 2, 3, 4; Pep Squad 1, 2; Debate 3; Civics Club 4.



LORENE MAE FOYT

Confraternity 2, 3, 4; Latin Club 1, 2; Sodality 1, 2, 3, 4; Secretary 2; Reporter 3; Glee Club 1, 2, 3; Civics Club 1, 2, 3; Beaker Breakers 1; Debate 3; Pep Squad 2, 3; Class Secretary 2.



PATRICIA GLOOR

Confraternity 4; Beaker Breakers 4; Civics Club 4.



ADELA GONZALEZ

Confraternity 3, 4; Glee Club 3, 4; Sodality 3, 4; Beaker Breakers 3, 4; Red Cross 3, 4; Reporter 3; Debate 4.



DOLORES FERNANDEZ



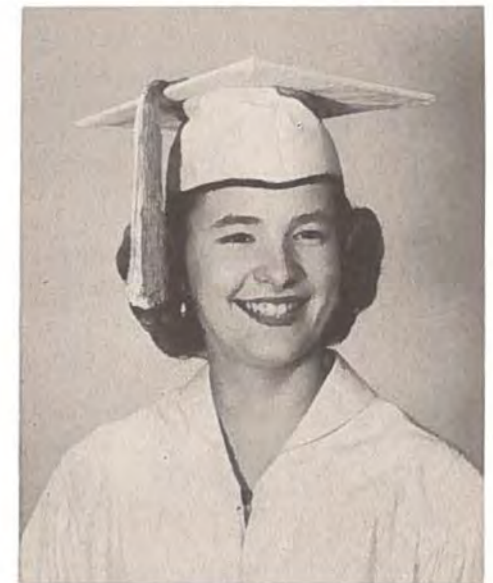
ESTHER FLORES

Confraternity 2, 4.



CHARLOTTE GUERRA

Confraternity 2, 4; Beaker Breakers 1, 2, 3, 4; Sodality 1, 2; Red Cross 3, 4; President 3; Glee Club 3, 4; Student Director 4; Debate 4; Student Council Representative 4; All-City Student Council 4; Civics Club 4; Crown Staff 4.



CAROL HEDRICK

Confraternity 2, 3, 4; Beaker Breakers 1; Red Cross 1, 2, 3, 4; Sodality 1, 2, 3, 4; Secretary 3; Union Representative 2; Pep Squad 1, 2, 3, 4; Latin Club 1, 2, 3; Historian 2, 3; Debate 3, 4; Civics Club 4; Crown Staff 3; Aurora Staff 4.



GERALDINE D'UNGER

Confraternity 2, 4; Sodality 1, 2, 3; Pep Squad 1, 2, 3; Latin Club 1, 2; Beaker Breakers 2; Glee Club 3, 4; Crown Staff 4.



LUCY DURHAM

Confraternity 2, 3, 4; Beaker Breakers 1, 2, 3, 4; Most Popular 1; Basketball Cheerleader 2, 3, 4; Most Beautiful 2; Boarders' Club 2, 3, 4, Vice-President 2, 3; Band 3, 4; Civics Club 4.



DIANE FAWCETT

Confraternity 2, 3, 4; Beaker Breakers 1; Latin Club 1; Sodality 1, 2, 3, 4; Pep Squad 1, 2; Debate 3; Civics Club 4.



LORENE MAE FOYT

Confraternity 2, 3, 4; Latin Club 1, 2; Sodality 1, 2, 3, 4, Secretary 2, Reporter 3; Glee Club 1, 2, 3; Civics Club 1, 2, 3; Beaker Breakers 1; Debate 3; Pep Squad 2, 3; Class Secretary 2.



PATRICIA GLOOR

Confraternity 4; Beaker Breakers 4; Civics Club 4.



ADELA GONZALEZ

Confraternity 3, 4; Glee Club 3, 4; Sodality 3, 4; Beaker Breakers 3, 4; Red Cross 3, 4, Reporter 3; Debate 4.



DOLORES FERNANDEZ



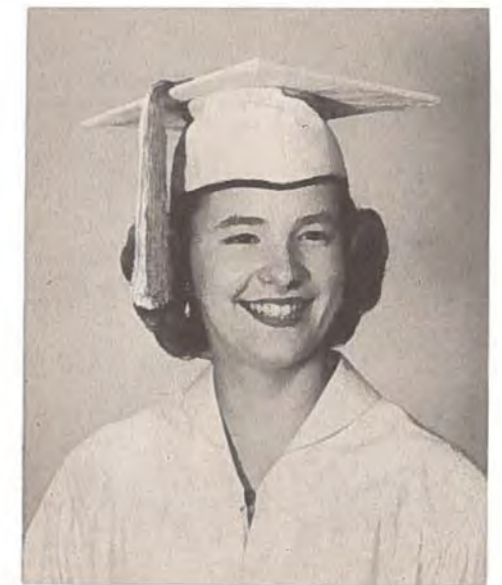
ESTHER FLORES

Confraternity 2, 4.



CHARLOTTE GUERRA

Confraternity 2, 4; Beaker Breakers 1, 2, 3, 4; Sodality 1, 2; Red Cross 3, 4, President 3; Glee Club 3, 4, Student Director 4; Debate 4; Student Council Representative 4; All-City Student Council 4; Civics Club 4; Crown Staff 4.



CAROL HEDRICK

Confraternity 2, 3, 4; Beaker Breakers 1; Red Cross 1, 2, 3, 4; Sodality 1, 2, 3, 4, Secretary 3, Union Representative 2; Pep Squad 1, 2, 3, 4; Latin Club 1, 2, 3, Historian 2, 3; Debate 3, 4; Civics Club 4; Crown Staff 3; Aurora Staff 4.



BETTY HENDERSON
Confraternity 4; Glee Club 4;
Vocation Club 4.



MARY ROSE HORRELL
Confraternity 2, 3, 4; Pep
Squad 1, 2, 3; Latin Club 1, 2;
Beaker Breakers 1, 2, 3, 4, Presi-
dent 4; Sodality 1, 2, 3, 4; Glee
Club 3, 4; Crown Staff 4.



PATRICIA HUSSEY
Latin Club 1, 2; Beaker Break-
ers 1, 2; Civics Club 4.



ELAINE KALER
Confrateritny 2, 3, 4; Pep
Squad 1, 2; Band Majorette 2,
3, 4, Band Secretary 4; Student
Council Representative 4; Class
Treasurer 2; May Fete Duchess
1; Glee Club 1, 2; Sodality 1,
2, 3, 4, President 3; Civics Club
4; Basketball team 2; Beaker
Breakers 2, 4.



**MARY MARGARET
KUNTSCHER**
Confraternity 2, 3, 4; Glee
Club 1, 4; Latin Club 1, 2,
Secretary 2; Beaker Breakers 1,
2; Band 2, 3; Class Treasurer 4.



PATSY KUSENBERGER
Confraternity 2, 3, 4, Chairman
of Helpers 3, Chairman of
Teachers 4; Pep Squad 1, 2, 3,
4; Beaker Breakers 1, 2, 4; De-
bate 4; Sodality 1, 2, 3; Basket-
ball team 3, 4; Red Cross 1, 2,
3, 4; Crown Staff 3, 4; Aurora
Staff 4.



ELSIE MAE JANOSEK
Beaker Breakers 1, 2; Sodality
3, 4.



NORMA JIMENEZ
Confraternity 2, 3, 4; Glee Club
1, 2, 3; Sodality 1, 2, 3, 4;
Beaker Breakers 1, 2; Basketball
team 3; Crown Staff 3, 4.



FRANCES LAUER
Confraternity 3, 4; Glee Club
3, 4; Pep Squad 3; Sodality 3,
4; Civics Club 4; School Reort-
er for T.V. 3, 4; Aurora Staff
4.



MARY LU LINK
Confraternity 2, 3, 4; Pep
Squad 1, 2, 3, Head Cheerlead-
er 3; Beaker Breakers 1; Latin
Club 1, 2; Sodality 1, 2, 3, 4;
Most Popular 3; Glee Club 3, 4;
Vice President 4; Civics Club 4.



**CRISTINA
MONTEMAYOR**
Most Beautiful 4.



BETTY KAY MORRIS
Confraternity 2, 3, 4; Beaker Breakers 1; Red Cross 1, 2, 3, 4; Pep Squad 1, 2, 3, 4, Cheerleader 3; May Fete Princess 1; Sodality 1, 2, 3, 4; Civics Club 4; Crown Staff 3, 4; Aurora Staff 4.



MARY BETH OBERLE
Confraternity 2, 3, 4; Band 2, 3; Vocation Club 2, 3, 4; Sodality 4; Latin Club 1, 2; Beaker Breakers 1.



JOSEPHINE PRADO
Confraternity 2, 3, 4; Beaker Breakers 1; Sodality 1, 2, 4; Basketball team 2, 3, 4; Band 2, 3, 4; Vocation Club 4; Civics Club 4.



CHRISTINE RACHAL
Confraternity 2, 3, Vice President 3; Class President 1; Class Parliamentarian 3; Student Council Representative 2, Treasurer 2; Glee Club 1, 2, 3, 4, Vice President 3, President 4; Sodality 2, 3, Treasurer 3; Beaker Breakers 1; Pep Squad 1, 2, 3.



ALICE KAYE RICH
Confraternity 2, 3, 4; Pep Squad 1, 2, 3, 4; Sodality 1, 2, 3, 4; Red Cross 1, 2, 3, 4, Representative 3; Beaker Breakers 2, 4; Debate 4; Basketball team 3, 4; Crown Staff 3, 4; Aurora Staff 4.



DAWN OLSON
Confraternity 2, 3, 4; Latin Club 3; Boarders' Club 3, 4, Reporter 3; Glee Club 3; Debate 4; Beaker Breakers 4.



ROSE MARIE ORSAK
Confraternity 2, 3, 4; Beaker Breakers 2, 4, Secretary 4; Pep Squad 1, 2, 3, 4; Sodality 1, 2, 3, 4; Aurora Staff 4.



PATRICIA ANNE RILEY
Confraternity 2, 3, 4; Pep Squad 1, 2, 3, 4; Sodality 1, 2, 3, 4, President 4; Debate 3, 4; Civics Club 4, President 4; Beaker Breakers 1, 4; Red Cross 2, 4, President 2; Class Treasurer 1; Student Council Representative 2; Latin Club 1, 2, Parliamentarian 2; Best All-Around 1; Most Beautiful 3; Class Reporter 3.



MARY NIDIA RODRIGUEZ
Confraternity 2, 3, 4; Sodality 1, 2; Beaker Breakers 2, 3, 4; Band 2, 3; Class Treasurer 3; Most Representative 3; Student Council Representative 4; Civics Club 4, Secretary 4.



MARY MAGDALENA SALDIVAR



SANDRA SANDERS
Confraternity 3, 4; Pep Squad 3; Sodality 3, 4, Vice President 4; Civics Club 4, Parliamentarian 4; Class Parliamentarian 4; Vocation Club 4.



SUSAN SCHEUER
Confraternity 2, 3, 4, Secretary 4; Beaker Breakers 1; Glee Club 1, 2, 3, 4, Secretary-Treasurer 4; Latin Club 1, 2; Sodality 1, 2, 3, 4, Vice President 3, Union Representative 4; Pep Squad 1, 2, 3; Class Vice President 2; Best All-Around 2; Student Council 2, Parliamentarian 2; Red Cross 2, 4, Vice President 2; Civics Club 4; Class Reporter 4.



SHIRLENE SKROBARCEK
Confraternity 2, 3, 4, Secretary 3; Sodality 1, 2, 3, 4, Union Representative 3, Vice President 4; Pep Squad 1, 2, 3; Beaker Breakers 1; May Fete Duchess 1; Glee Club 1, 2, 3, 4; Class Reporter 2; Basketball Cheerleader 2, 3, 4; Student Council Treasurer 3; Vocation Club 4; Civics Club 4; Red Cross 1, 2, 3, 4.



CAROLYN SMITH
Confraternity 2, 3; Sodality 1, 2, 3, 4, President 3, Parliamentarian 4, Union Representative 4; Beaker Breakers 1; Pep Squad 1, 2; Band 2, 3, 4, President 3; Basketball team 2, 3, 4, Captain 3; Vocation Club 4; Class President 4.



ROBERTA SMITH
Confraternity 2, 3, 4; Sodality 1, 2, 3, 4; Student Council Representative 1, 3, Historian 3; Beaker Breakers 1, 2, 3, 4, Reporter 3; Pep Squad 1, 2, 3; Glee Club 3, 4, Reporter 4; Most Popular 4; Crown Staff 4.



ELAINE SCHONEFELD
Confraternity 4; Beaker Breakers 2; Basketball team 4.



SHARON SCOTT
Confraternity 2, 3, 4; Glee Club 2, 3, 4, Representative 4; Latin Club 2; Pep Squad 2, 3; Sodality 2, 3, 4, Union Secretary 3; Civics Club 4; Beaker Breakers 4.



JO ANN TRICE
Confraternity 2, 3, 4; Glee Club 2; Pep Squad 2; Band Majorette 2, 3, 4; Sodality 2, 3, 4; Latin Club 2; Civics Club 4; Beaker Breakers 4; Crown Staff 4.



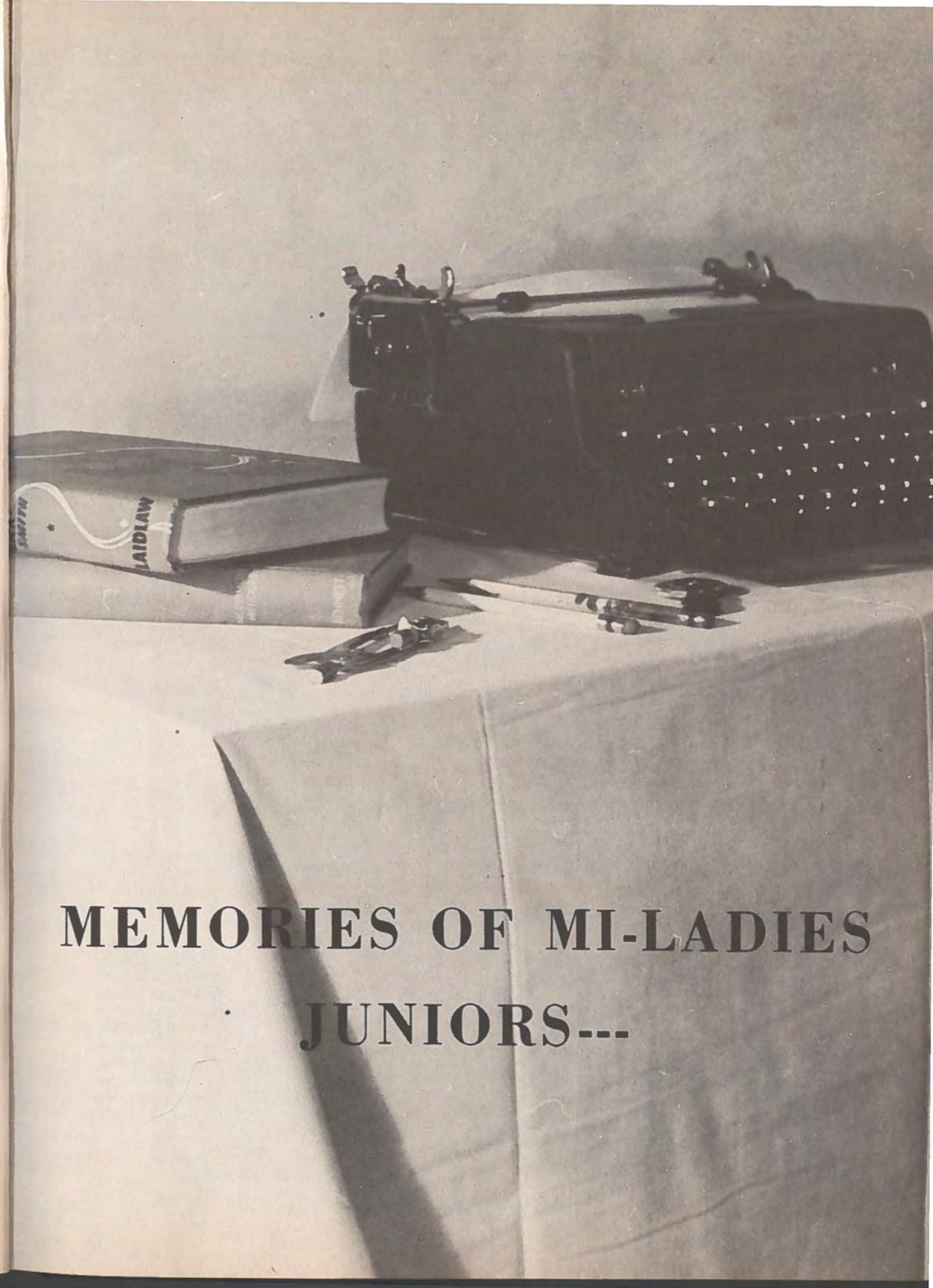
ELIA VILLARREAL
Confraternity 2, 3, 4; Most Beautiful 1; Sodality 1; Beaker Breakers 1, 4; Student Council 3, 4, Vice President 4, Secretary 3; Class Secretary 3, 4; Glee Club 3; Debate 3, 4; Red Cross Council 4; Civics Club 4.



GLORIA WALTERS
Confraternity 2, 4; Glee Club 1, 2, 3, 4, Director 3, Assistant 4; Beaker Breakers 1, 2, 3, 4, Treasurer 4; Sodality 1, 2; May Fete Duchess 1; Class President 3; Class Vice President 4; Student Council 3, 4, Parliamentarian 3, President 4; All-City Student Council 3, 4, Corresponding Secretary 4; Red Cross 4; Most Representative 4.



THE SENIOR CLASS DEDICATES ITS SECTION OF THE AURORA TO A CLASSMATE, PATRICIA BROWN, WHO WAS ACCIDENTALLY KILLED DURING HER FRESHMAN YEAR.



MEMORIES OF MI-LADIES JUNIORS---



Junior "A" Class Officers:

Peggy Enright, *Parliamentarian*; Dorothy Bollom, *Reporter*; Mary Louise Gerant, *Secretary*; Carolyn Carter, *President*; Mary Lee Lewis, *Treasurer*; Mary Ann Chilen, *Student Council Representative*; Anne Gonzalez, *Student Council Representative*. Absent is: Mabel Janecek, *Vice-President*.

JUNIOR "A" ACHIEVEMENTS

<i>Student Council Secretary</i>	Mary Louise Gerant
<i>Student Council Reporter</i>	Anne Gonzalez
<i>All-City Student Council Representative</i>	Catherine D'Unger
<i>Glee Club Librarian</i>	Carolyn Carter
<i>Civics Club Vice-President</i>	Mary Ann Chilen
<i>Junior C.C.D. President</i>	Anne Gonzalez
<i>Beaker Breakers Vice-President</i>	Mary Ann Chilen
<i>Beaker Breakers Reporter</i>	Catherine D'Unger
<i>Student of the Month, October</i>	Mary Lee Lewis
<i>Student of the Month, February</i>	Carolyn Carter
<i>Our Lady of Grace Sodality President</i>	Mable Janecek
<i>Our Lady of Grace Sodality Representative</i>	Dorothy Bollom
<i>Belle of the Ball</i>	Mary Lee Lewis
<i>Sewing Contest, Third Place Winner</i>	Rose Marie Benys
<i>Medical Essay Contest, Second Place</i>	Anne Gonzalez
<i>Superior Rating at Speech Festival</i>	Catherine D'Unger



MOST POPULAR

SUE GARRETT



MOST REPRESENTATIVE

MARY LOUISE GERANT

**JUNIOR
"A"**



MOST BEAUTIFUL

JOSEPHINE JONES

FAVORITES



Delia Acuna



Gwen Allen



Mary Nan Allen



Rose Marie Benys



Dorothy Bollom



Joyce Ann Floyd



Suzanne Friedmann



Cora Lee Friesen



Anna Maria Garcia



Sue Garrett



Dolores Boyles



Mary Frances
Brown



Carolyn Carter



Maureen Carter



Mary Ann Castro



Mary Louise Gerant



Lucille Gonzales



Anne Gonzalez



Henrietta Gonzalez



Macie Houseman



Mary Ann Chilen



Mary Lindsey
Coons



Jeanne Duke



Georgia Lee
Durham



Catherine D'Unger



Mabel Janecek



Josephine Jones



Annette Karam



Janice Kingsbury



Annita Kocurek



Peggy Enright



Patricia Fey



Ernestine Flanagan



Carol Flood



Mary Lee Lewis



Pat Liesenfeld



Maria Lopez



Junior "B" Class Officers:

Johnnie Lea Smith, *President*; Celeste Pray, *Reporter*; Lucille Prado, *Vice-President*; Betty Ann Whitworth, *Treasurer*; Christine Mattfeld, *Student Council Representative*; and Sylvia Riedel, *Secretary*. Absent are: Geraldine Mikulec, *Parliamentarian* and Patsy Trainor, *Student Council Representative*.

JUNIOR "B" ACHIEVEMENTS

Student Council Treasurer	Sylvia Riedel
Student Council Historian	Lucille Prado
Student Council Parliamentarian	Johnnie Lea Smith
All-City Student Council Representatives	Johnnie Lea Smith, Sylvia Riedel
Glee Club Librarian	Sharron Richards
Civics Club Treasurer	Peggy Ralph
Civics Club Reporter	Patsy Trainor
Junior C.C.D. Vice-President	Johnnie Lea Smith
Junior C.C.D. Reporter	Christine Mattfeld
Junior C.C.D. Helper's Chairman	Mary Rose Pena
Junior C.C.D. Apostles' Chairman	Lucille Prado
Beaker Breakers Parliamentarian	Marietta Villarreal
Pep Squad Manager	Johnnie Lea Smith
Our Lady of Grace Sodality Secretary	Patricia Speed
Our Lady of Grace Sodality Treasurer	Marietta Villarreal
I. W. A. Clean-Up Queen	Sharron Richards
Sewing Contest, Second Place Winner	Peggy Ralph
Superior Rating at Speech Festival	Lucille Prado
Excellent Rating at Speech Festival	Mary Rose Pena, Gerry Ann Migl, Lucille Prado
Medical Essay Contest, Third Place	Gloria Moreno

**JUNIOR
"B"**



MOST BEAUTIFUL
MAGDALEN SULAK

FAVORITES



MOST POPULAR
SHARRON RICHARDS



MOST REPRESENTATIVE
JOHNNIE LEA SMITH



Christine Mattfeld



Gerry Ann Migl



Geraldine Mikulec



Gloria Moreno



Mildred
McCullough



Mary Margaret
Shearer



Jeannette
Smejkal



Johnnie Lea Smith



Pat Speed



Jennie Marie
Stillman



Emily Nelson



Mary Rose Pena



Oralia Teresa
Pena



Joyce Peters



Claudia Petzel



Magdalen Sulak



Camille Thom



Patsy Trainor



Katherine
Tschoepe



Joyce Ulcak



Lucille Prado



Celeste Pray



Peggy Ralph



Beatrice Ann
Ramos



Sharron Richards



Cecilia Vargas



Elizabeth Vettors



Marietta
Villarreal



Geraldine Wahl



Patricia Walden



Sylvia Riedel



Martha Ruiz



Amalia Saldivar



Sharon Waters



Betty Ann
Whitworth



Sofie Zdansky



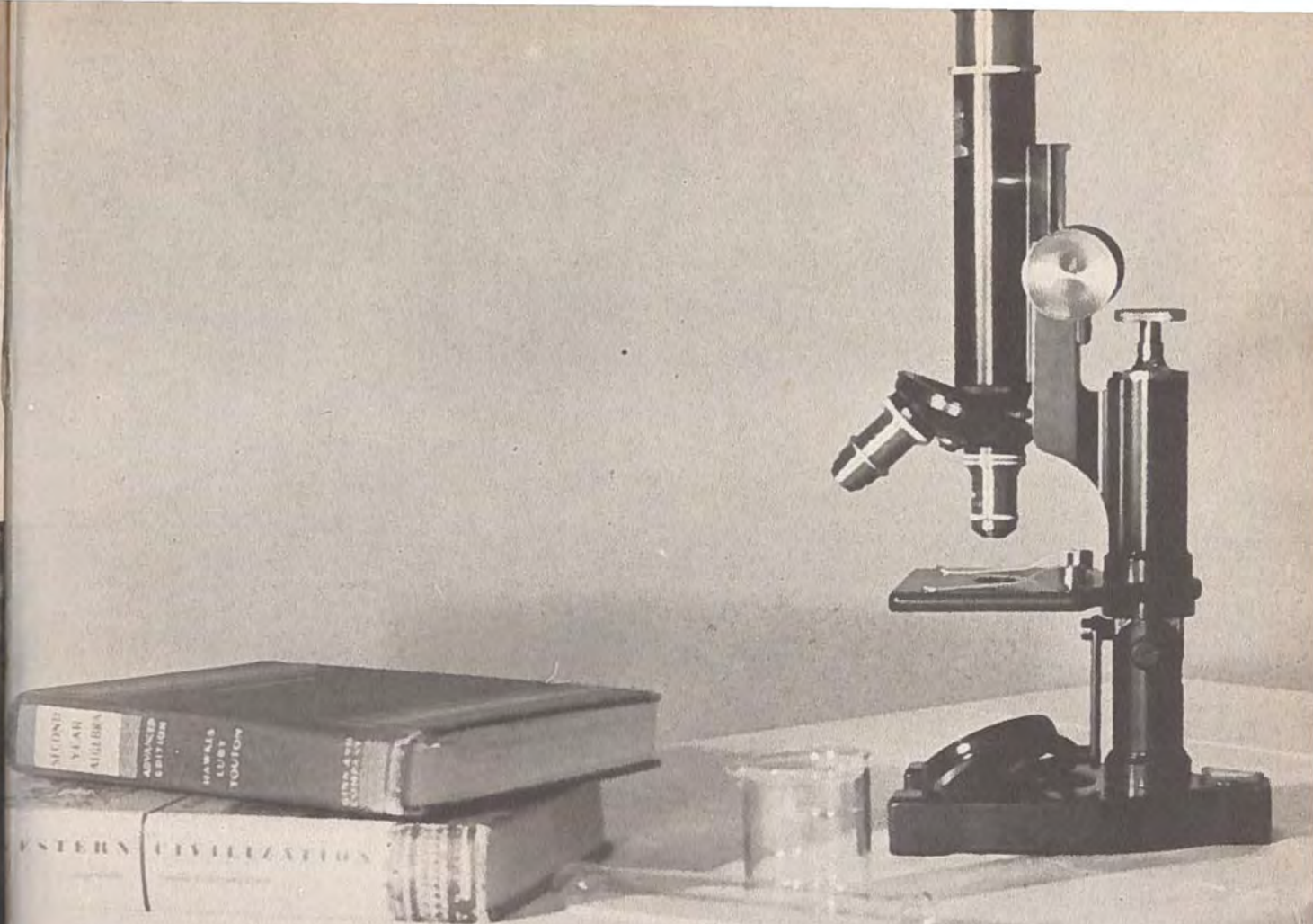
COMANCHE

Juniors in the Civics Club undertook a project to help the Nueces Historical Society in its endeavor to write a history of Nueces County. The girls did the research work, guided by their instructor, Sister Stanislaus. The information was "pooled" by each of the chairmen of the committees. Papers on the Comanche, the Tonkawa, the Apache Lipan, and the Karanahuas were then prepared and read at the Nueces Historical Society meeting on April 3. The miniature "villages" were made to show how these four Indian tribes lived.

Johnnie Lea Smith claimed fame for the juniors this year as Pep Squad Manager.



The juniors were active in all types of contests this past year. Here a group of the juniors who entered the sewing contest pose for the cameraman.



MEMORIES OF MI-LADIES SOPHOMORES---



Sophomore Class Officers:

Noelie Shaw, *Treasurer*; Therese Bauer, *President*; Jo Ann Gravett, *Student Council Representative*; Mary Lemke, *Parliamentarian*; Mary Alice Berlanga, *Vice-President*; Lucinda Guzman, *Secretary*. Absent is: Susan Schubert, *Student Council Representative*.

SOPHOMORE ACHIEVEMENTS

<i>Our Lady of Grace Sodality Vice-President</i>	Norma Leal
<i>Penny Queen</i>	Therese Bauer
<i>Student of the Month, November</i>	Maria de los Peredo
<i>Student of the Month, March</i>	Dorothy Park
<i>Superior Rating at Speech Festival</i>	Mary Alice Berlanga



MOST BEAUTIFUL
JUDY SERNA



MOST POPULAR
SUSAN SCHUBERT



MOST REPRESENTATIVE
MARY ALICE BERLANGA



Rose Marie Alejandro



Therese Bauer



Mary Alice Berlanga



Judith Bluntzer



Zulema Caceres



Mary Frances Hatch



Elizabeth Kelly



Bernadette Kohl



Norma Leal



Mary Lemke



Judy Campbell



Joyce Carter



Beverly Chamuler



Roylene Chastain



Louise Cline



Joan Marston



Betty Lou May



Sandra Middleton



Mary Ann Montez



Imelda Murray



Gloria Jean Collier



Theresa Dement



Louise Flusche



Dora Garcia



Mary Lou Garza



Dianne McCulloch



Mary McLaughlin



Mary Louise Netek



Modena Nickens



Carlene Neuman



Frances Gilbert



Walieta Gold



Sally Gonzalez



Jo Ann Gravett



Bernice Greer



Gladys Ordner



Esther Otero



Dorothy Park



Diane Peck



Patricia Pellegrino



Laura Mae Gribbin



Alma Guerrero



Otilia Guerrero



Lucinda Guzman



Mary Harney



Maria De Los A. Peredo



Frances Pons



Fannie Mae Porter



Diane Prado



Patricia Riek



Sue Riley



Julianne Robinson



Louise Robinson



Janie Rodriguez



Mary Jessie
Samperi



Virginia Scheuer



Susan Schubert



Olga Segura



Judy Serna



Noelie Shaw



Nancy Skelton



Priscilla Slosson



Jackie Smith



Patricia Suldon



Mary Bee Teasley



Beth Turcotte



Mary Frances
Whelan



Betty Williams



Barbara Jean
Wright



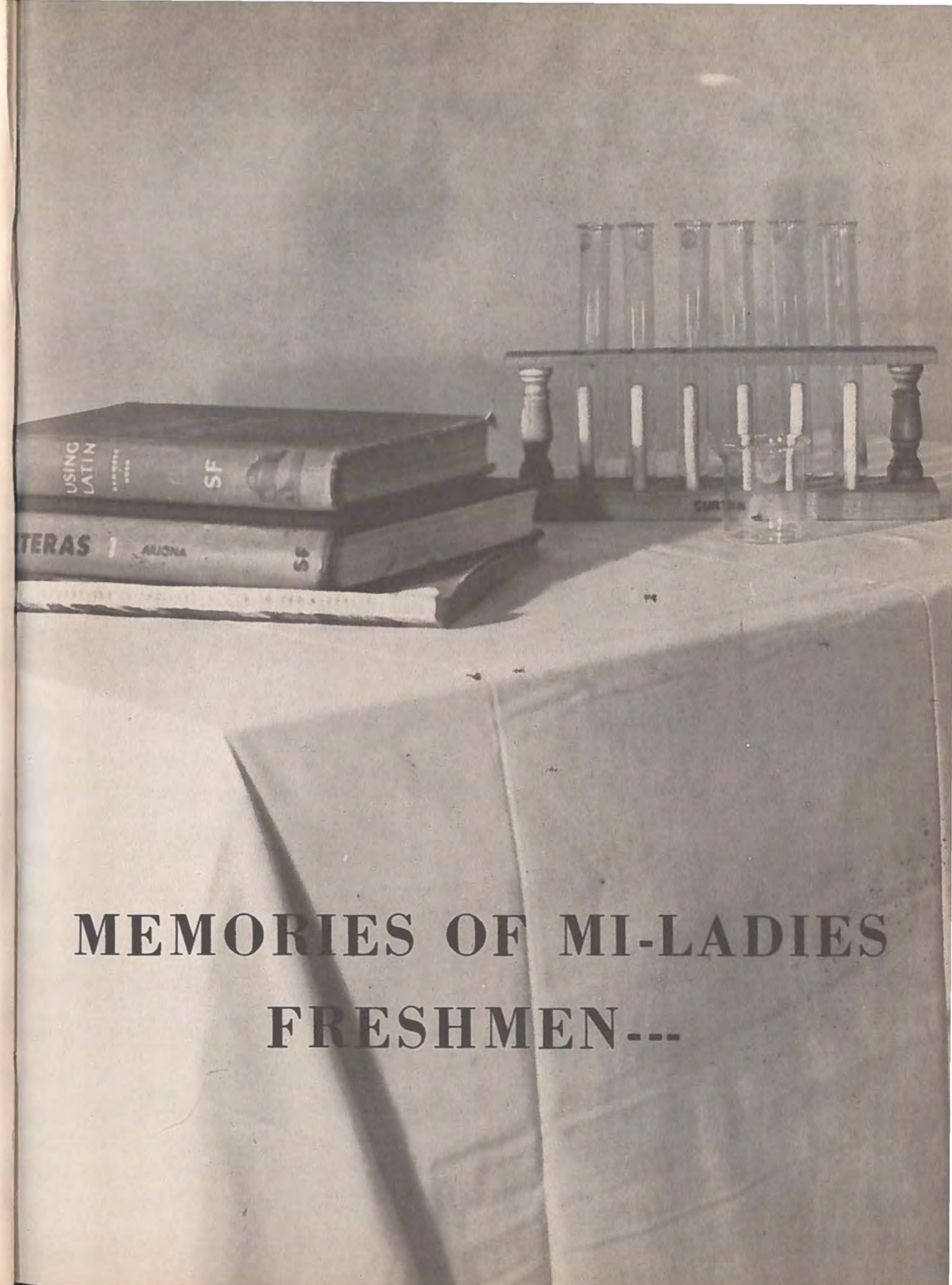
Betty Ann Wright



Marianne
Eckenrode
Second Semester



Sherry Parchman
Second Semester



MEMORIES OF MI-LADIES FRESHMEN---



Freshman "A" Officers Are:

Joan Franks, *Treasurer*; Darlene Aniol, *Student Council Representative*; Suzanne Chapman, *Secretary*; Clare Foran, *President*; Brenda Chastant, *Vice President*; Rose Berlanga, *Reporter*.
Absent are: Ann Fisher, *Student Council Representative* and Delores Foyt, *Parliamentarian*.



FRESHMAN "A" ACHIEVEMENTS

Glee Club Representative . . . Brenda Chastant
Students of the Month, April . . . Betty and
Barbara Floyd
Majorette for 1956-57 . . . Suzanne Chapman

Darlene Aniol, Clare Foran, Suzanne Chapman, and Joan Franks are only a part of the Freshman "A" Class that helped to roll papers to sell in their project for the year which was to make money to buy more desks for the school.



MOST BEAUTIFUL
ROSE BERLANGA



MOST POPULAR
BRENDA CHASTANT



MOST REPRESENTATIVE
ANN FISHER

**FRESHMAN "A"
FAVORITES**



Carol Allen



Darlene Aniol



Rose Marie
Arellano



Rose Berlanga



Judy Beshel



Lela Beth Crow



Maxine Dement



Jane Derbis



Naomi Doyle



Kay Dunne



Jo Ann Blaschke



Betty Bledsoe



Theresa Bledsoe



Audrey Ann
Bolger



Helen Bushala



Eddy Durham



Kay Eason



Lillian Ermis



Patricia Falcon



Ann Fisher



Yolanda Cantu



Donna Carlucci



Helen Joyce
Carter



Rosario Chapa



Suzanne Chapman



Diana Flores



Barbara Floyd



Betty Floyd



Clare Foran



Mary Pearl
Forehand



Brenda Chastant



Barbara Jean
Chatman



Alva Rose Chavez



Barbara Christian



Daisy Clifton



Dolores Ann Foyt



Joan Franks



Rosie Fuentes



Freshman "B" Class Officers Are:

Jan McGregor, Reporter; Kay Vreeland, Secretary; Carol Leonard, Student Council Representative; Cleary Johnston, Student Council Representative; Carol Neckar, President; Loretta Skrobarcek, Vice-President; Norma Godoy, Treasurer; and Rachal Torres, Parliamentarian.

**FRESHMAN "B"
FAVORITES**



MOST BEAUTIFUL
JULIETTA GAYTAN



MOST POPULAR
CLEARY JOHNSTON



MOST REPRESENTATIVE
LORETTA SKROBARCEK

FRESHMAN "B" ACHIEVEMENTS

Student of the Month,
December Gloria Sherek
Majorettes for
1956-57 Georgene Trice,
Antonia Jimenez

Some of the Freshman "B" class practiced their knowledge of first aid by demonstrating how to put on a leg splint during one of their general science classes.





Mary Alice Galvan



Mary Joe Garcia



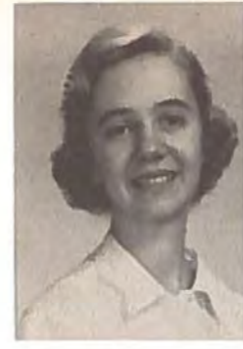
Tita Garcia



Julietta Gaytan



Marnerleen Glomb



Sally Martineau



Wynona Meyers



Lynda Miller



Rosie Mirabal



Alice Montemayor



Norma Godoy



Dora Guerrero



Velia Guerrero



Judy Heck



Linda Hernandez



Cindy Murphy



Jan McGregor



Carol Neckar



Jo Ann Nelson



Jacqueline Neuman



Mary Lucille Huegele



Antonia Jimenez



Cleary Johnston



Carol Kingsbury



Kay Leimbock



Dorothy O'Docharty



Aurora Patina



Geraldine Petru



Kay Priour



Angelina Rivera



Carol Leonard



Mary Imelda Lozano



Wanda Lucas



Elinor Mabry



Guadalupe Rivera



Phyllis Robinson



Sylvia Salas



Nancy Samperi



Gloria Sherek



Loretta Skrobarcek



Sandra Slosson



Mary Sue Southernwood



Delores Ann Stuckly



Patricia Sturm



Hettie Kay Swynnerton



Rachal Torres



Betty Tower



Georgene Trice



Angelica Vasquez



Mary Ann Veit



Kay Vreeland



Mary Jo Wagner



Karon Walker



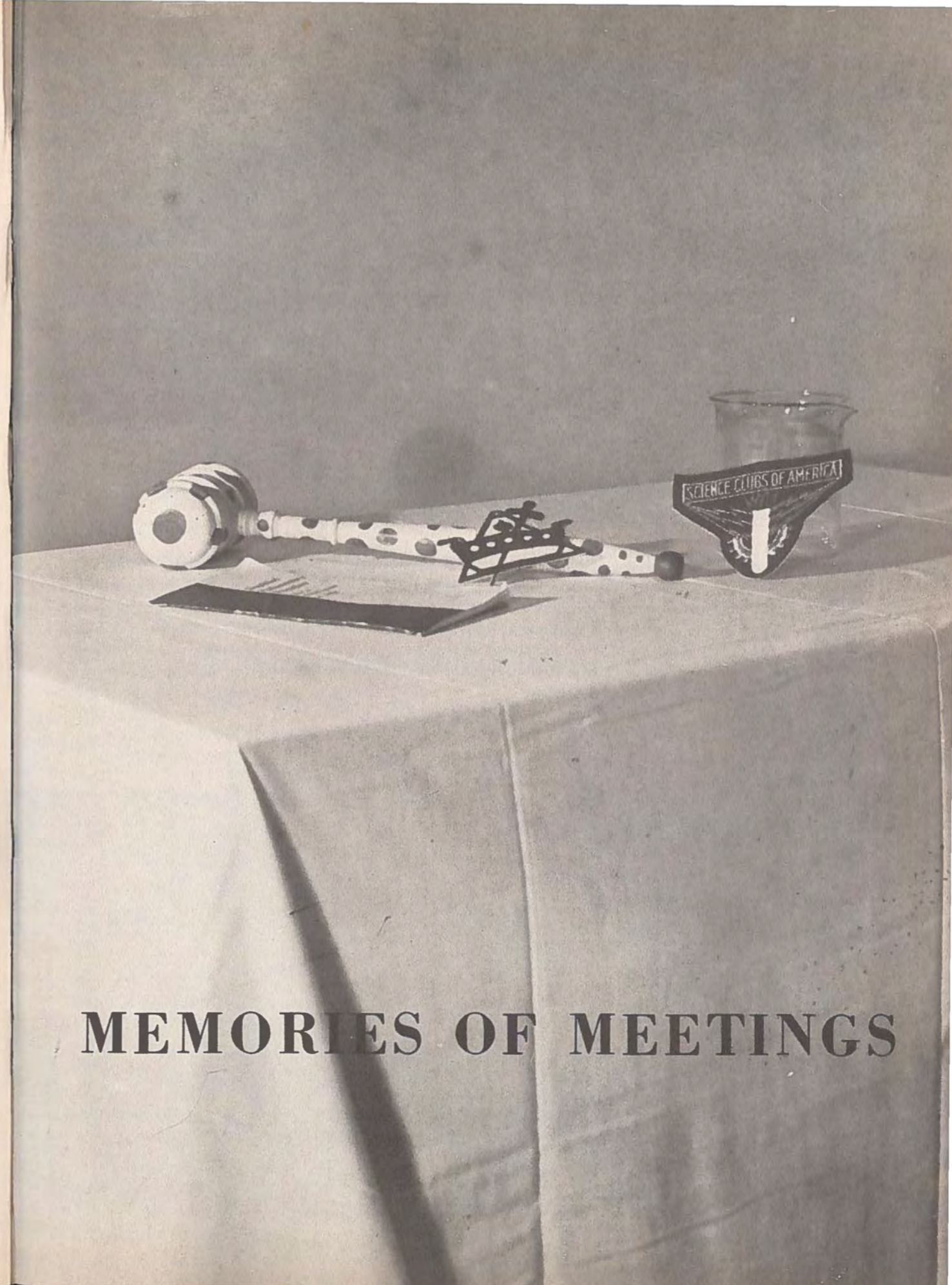
Mary Jo Watson



Mary Zapata



Patricia Suber
Second Semester



MEMORIES OF MEETINGS



Student Council Officers Are:
 Gloria Walters, *President*;
 Elia Villarreal, *Vice-President*;
 Mary Louise Gerant, *Secretary*;
 Sylvia Riedel, *Treasurer*;
 Johnnie Le a S m i t h, *Parliamentarian*;
 Lucille Prado, *Historian*;
 Anne Gonzalez, *Reporter*;
 and Sister Agnes Marie, *Sponsor*.

The Student Council was organized in the fall of 1951 by Sister Mary Luke. Although only five years old this organization has accomplished a great deal during the past five years to fulfill the purpose for which it was established, namely, providing students with opportunities to develop leadership, responsibility, initiative, and a spirit of cooperation.

Council projects this year included a 1000 Penny Drive, a Student Directory for Incarnate Word Academy and Corpus Christi College Academy, a pie and cake booth for the convenience of the student body, a Christmas party for all the classes, the sponsorship of the Favorites Dance in October, and the Belle of the Ball Dance in February, and the Future Freshman Day in May.



STUDENT COUNCIL

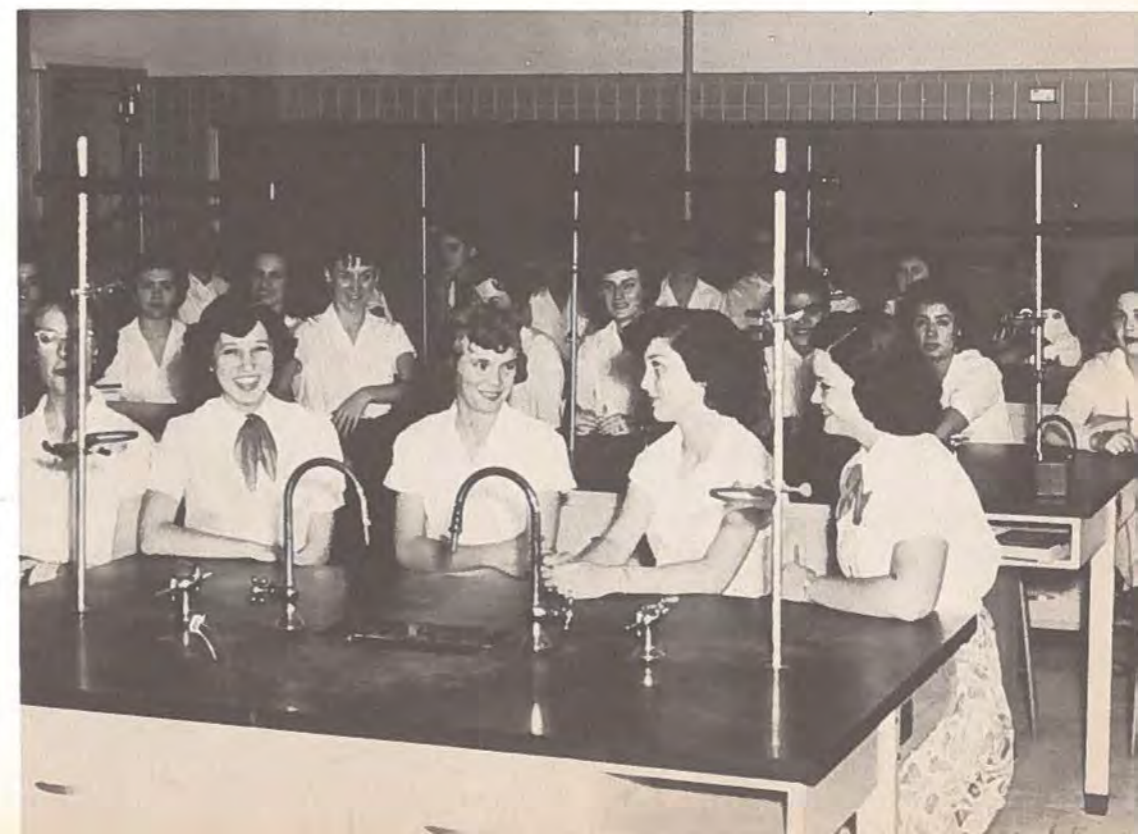


BEAKER BREAKERS



Reactivated in 1952 under the name of *Beaker Breakers*, the science club has been a major function in the activities of I.W.A. It is devoted to stimulating interest in the scientific and nursing professions. Most of the members are students in one or another science class while others have had some training before. Each year the club sends delegates to nearby conventions and this year some members of the club took part in science fairs held in Corpus Christi. The *Beaker Breakers* club is affiliated with the Science Clubs of America and the Texas Academy of Science.

Beaker Breakers Officers Are:
 Mary Rose Horrell, *President*;
 Mary Ann Chilen, *Vice-President*;
 Rose Marie Orsak, *Secretary*;
 Gloria Walters, *Treasurer*;
 Adela Gonzalez, *Reporter*;
 Marietta Villarreal, *Parliamentarian*;
 and Sister Francis, *Sponsor*.



SODALITY OF OUR LADY OF GRACE



Our high school group now has about 27 members made up of girls who wish to increase their knowledge and devotion to our Blessed Mother by working with the Sodality. The Sodality is a religious organization. Its aims are to foster in its members an ardent devotion, reverence and filial love toward the Blessed Virgin Mary. Through this devotion to Mary they strive to sanctify themselves, and through their good example and prayers they seek to sanctify their neighbors, and defend the Church against the wicked. The Sodality has held press month and Catholic Book Week exhibits, and helped to promote the spread of Catholic literature through the solicitation of subscriptions to Catholic magazines and the sale of Catholic approved books. The last big project on the part of the high school is the Sodality Union idea. Now they confine their projects to studying rules, helping to spread the Apostolate in the school, and supporting and cooperating with the Union. Sister Mary Xavier is the moderator of the Sodality. The officers are: Mabel Janeczek, *Prefect*; Norma Leal, *Vice-Prefect*; Patricia Speed, *Secretary*; Marietta Villarreal, *Treasurer*; and Carolyn Smith, *Parliamentarian*.



JUNIOR CONFRATERNITY OF CHRISTIAN DOCTRINE



The Junior Confraternity of Christian Doctrine was organized in the fall of 1953 at Incarnate Word Academy. Although this is only its third year, the organization has done much to fulfill the purpose, winning souls for Christ, for which Confraternities are established. This year's projects were: Instruction of Children throughout the city by the teachers, distribution of Catholic literature throughout the city, filling boxes of food for the needy during Christmas, and sponsoring Easter Egg Hunts by the apostles, and making holy cards, holy articles, and other articles needed by the teachers and apostles, by the helpers. Funds are raised by the weekly Pot of Gold. The Confraternity meets in separate rooms for the three different groups and their individual sponsors.

Officers of the Confraternity Are:
President, Anne Gonzalez; Vice - President, Johnnie Lea Smith; Secretary, Susan Scheuer; Treasurer, Josephine Prado; Reporter, Christine Mattfeld; Chairman of Teachers, Patsy Kusenberger; Chairman of Apostles, Lucille Prado; Chairman of Helpers, Emily Nelson, Carol Brown, and Mary Rose Pena. Sponsors are: Sister Agnes Marie, Sister Mary Anne, and Sister Mary Luke.





Staff members looking over one of their editions include: Esperanza Arredondo, Alice Kay Rich, Roberta Smith, Geraldine D'Unger, Charlotte Guerra, Zaida De Leon, Lyla Jeanne De Vine, Sister Jeanne Francis, Patsy Kusenberger, Mary Rose Horrell, Carol Brown, and Jo Ann Trice.

Publishing a monthly four page school newspaper is the job of the CROWN staff, made up principally of members of the Journalism class. Class reporters assist in the collection and "writing up" of the news. The CROWN consistently is given top rating by the various rating and survey associations and is proudest of its designation as "All-Catholic."

The Crown

Incarnate Word Academy · Corpus Christi, Texas

Published Monthly By and For the Students Of
INCARNATE WORD ACADEMY
 Corpus Christi, Texas
 Under the Direction of the Journalism Class

Among other things, the staff is proud to have been instrumental in enlarging the size of the paper, in having Charlotte win fourth place in the State-wide writing contest sponsored by the THSPA (feature writing division), and being the recipients of a letter from the Secretariat of State of His Holiness in which the Holy Father imparted "to them, their teachers and their loved ones His paternal Apostolic Blessing."

- | | |
|---------------------------|-----------------------|
| Principal | Sister Mary George |
| Faculty Sponsor | Sister Jeanne Francis |
| Managing Editor | Lyla Jeanne DeVine |
| News Editor | Patsy Kusenberger |
| Make-Up Editor | Alice Kay Rich |
| Feature Editor | Jo Ann Trice |
| Class Editor | Charlotte Guerra |
| Club Editor | Carol Brown |
| Sports Editor | Mary Rose Horrell |
| Exchange Editor | Zaida de Leon |
| Circulation Manager | Geraldine D'Unger |
| Advertising Manager | Roberta Smith |
| Business Manager | Esperanza Arredondo |
| Staff Photographer | Sue Garrett |
- Reporters: Susan Scheuer, Dorothy Bollom, Celeste Pray, Frances Lauer, Christine Mattfeld, Anne Gonzalez, Barbara Jean Wright, Peggy Enright, Jan McGregor, Rosa Berlanga, Norma Jimines, and Mary Frances Whelan.



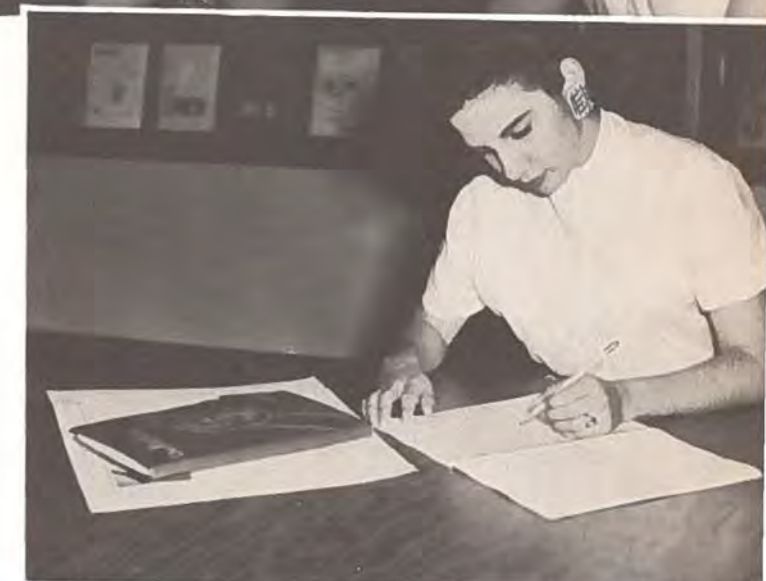
"All-Catholic"



"All-Texas"



Sue Garrett holds the camera she used so often in taking pictures.



Zaida de Leon entered all data for the advertisers.

The staff includes Sue Garrett, *Photographer*; Alice Kaye Rich, *Business Co-Manager*; Frances Lauer, *Copy Editor*; Rose Marie Orsak, *Lay-Out Editor*; Carol Hedrick, *Co-Editor*; Betty Kay Morris, *Co-Editor*; Patsy Kusenberger, *Business Co-Manager*; Zaida de Leon, *Advertising Manager*; and Sister Jeanne Francis, *Sponsor*.

THE AURORA STAFF

COMBINED BANDS



One of the outstanding bands of Corpus Christi is the Incarnate Word Academy Corpus Christi College-Academy combined high school band, organized two years ago under direction of Mr. D. W. McCready, Catholic School band director. This year the band played at all the home football games of C.C.C.A., and several out-of-town games, at church and school barbecues, marched in the Buccaneer Days Parade, and climaxed the year with a Music Festival at the city auditorium, attended by many bands.



The Cavalier Pep Squad, as it is now, was organized in 1954. New uniforms were made and the organization was put under the direction of Mr. D. W. McCready, band director. The Pep Squad marches with the band in parades and in half-time shows. The main activities of the organization take place during the C.C.C.A. football season, and during the past season the club sold "slogan ribbons" and sponsored a few victory dances. Pep Squad manager is Johnnie Lea Smith.



GLEE CLUB AND SCHOLA



Composed of 85 members, the Glee Club is one of the most popular organizations at I.W.A. Mrs. Tom Boyd, Jr., director, has also a specially chosen group of 40 members in the select "Traveling Choir". Apart from these two groups, there is also a "Schola", under the direction of Sister Adrian Clare, which is made up of volunteers from the Gregorian Chant classes. The Schola sings at all school religious functions and have had occasion to sing for activities, also.



Noelie Shaw consulted with Mrs. Boyd over rendition for one of the many choir festivals attended by the choir.





Shown are the members of the Angels basketball team: Sister Jeanne Francis, Karon Walker, Elaine Schonefeld, Modena Nickens, Beth Turcotte, Suzanne Friedmann, Norma Leal, Alice Kaye Rich, Gwen Allen, Mabel Janecek, Celeste Pray, Pat Speed, Mary Frances Brown, Patsy Kusenberger, Carolyn Smith, and Miss Cornelia Brown.

THE ANGELS' TEAMS

Two athletic sports engaged in this year by I.W.A. teams are both basketball and softball. This is the third year basketball has been a competitive sport for the ANGELS while softball is entering its first year for them. The ANGELS met Catholic High School teams from various parts of the state and lost only three of the games they played. Miss Cornelia Brown, I.W.A. graduate, assists Sister Jeanne Francis with the teams.



Pictured Above Are the Members of the Angels' Softball Team:
Sister Jeanne Francis, Mabel Janecek, Rose Marie Arellano, Juliette Gayton, Betty Floyd, Mary Pearl Forehand, Gloria Sherek, Rachal Torres, Barbara Floyd, Guadalupe Rivera, Carolyn Smith, Helen Bushala, Judy Serna, Suzanne Friedman, Dora Guerrero, Norma Leal, Karon Walker, Diane Peck, Julianne Robinson.



Angels' teams will always have pleasant memories of the trips taken to Houston, Austin, Laredo, and other nearby towns. Games were fun, sights were seen, and new friends were made.





The Mothers' Club officers are: Mrs. Oscar Casreo, president; Mrs. Charles Foyt, corresponding secretary; (seated) and Mrs. C. J. Friedman, treasurer; Mrs. Joe E. Fey, parliamentarian; and Mrs. John Kaler, secretary. Absent is Mrs. Ernest Speed, vice-president.

Some of the many projects undertaken by the Mothers' Club this term include: a bake sale, a style show, a card party, a plate sale, a parcel post sale and others. The club also bought \$600 worth of school desks, helped to pay for the maid service, bought a medal for a high average student, paid for playground improvements, and undertook to understand and help the Catholic youth.

Mrs. Janecek, Mrs. Leonard, Mrs. Murphy and Mrs. Speed are pictured as they discuss plans for one of the many Mothers' Club projects of this school term.



THE MOTHERS' CLUB



INCARNATE WORD ACADEMY ALUMNAE ASSOCIATION

Preparing posters for the Alumnae Ham Dinner are (left to right): Mrs. Jack Grant, Mrs. Shirley Mireur, and Mrs. Irvin Peterson.

The Incarnate Word Academy Alumnae Association has an active membership of approximately 250 graduates and ex-students, whose annual benefit activities include a Ham Dinner in January and a pie booth at the K of C Carnival each spring. From proceeds the Association has contributed toward the building fund and the beautifying of the campus, has supplied the cafeteria with tables and chairs, with china and silverware and with stainless kitchen utensils. The organization is actively affiliated with the NCCW and the International Federation of Catholic Alumnae; members also hold deanery offices and state offices in these groups. Other activities each year include Guest Night each fall, the annual Critics' Forum in the spring, the celebration of Mary's Day in May, and various other school functions. The highlight of the year, however, is the Ivy Chain ceremony which takes place as a part of the annual Homecoming in May. The chain signifies the unity of the members with the incoming members of the graduating class. At this time, new officers are installed for the coming year and graduates of the current class are formally welcomed into the Association. Benediction of the Blessed Sacrament in the Convent Chapel and an annual banquet in the cafeteria complete the year's activities. Officers for the 1955-56 season are: Mrs. James Pope, president; Mrs. Roy Rodriguez, vice-president; Miss Christine Ragland, recording secretary; Miss Pat Floyd, corresponding secretary; Miss Florence Dorsogn, parliamentarian; and Miss Jeannette Rachal, treasurer. Sister Jeanne Francis is directress and Sister Benedict is assistant directress.



THE BOARDERS' CLUB

The club includes all those students who live at Incarnate Word Academy Boarding School. They have come to Corpus Christi from near and far, from as far away as Germany and deep in Mexico, and near as Kingsville and Refugio. Prefects are Sister Mary Aquinas and Sister Mary Luke.



Marta Cresson, senior, was president of the Boarders' Club for the past year.



Various social activities are planned each year. One very popular party is an afternoon at the Skating Rink. Other parties include dances, movies, frequent picnics, and boat rides.



MEMORIES OF BIG
MOMENTS

His Excellency, the Most Rev. M. S. Garriga, D.D., L.L.D., Bishop of Corpus Christi, gave the final blessing at the Mass of the Holy Ghost held on September 2, which officially opened the school year. The Mass followed the blessing of the new statue of the Incarnate Word and Blessed Sacrament which is displayed on a parapet adjoining the front steps of the Alameda Street entrance to the school.



Serving plates at the annual chicken barbecue are Mrs. W. J. McEvoy, Mrs. D. E. Oldmixon, Mrs. A. H. Coldewey, and Mrs. N. P. Rossi. Proceeds were used to bolster the new school's building fund.



Esperanza Arredondo was the first lucky senior to receive her 1956 class ring from Monsignor Marx. The ceremony was followed by a breakfast held in the school cafeteria.

Rt. Rev. Monsignor Adolph Marx blessed the senior rings in a solemn ceremony immediately after a Mass held in the convent chapel on September 17.



SEPTEMBER



Freshman Class Presidents, Clare Foran and Carol Neckar, looked on in awe as Carolyn Smith, Senior Class president, and Gloria Walters, vice-president, read off regulations for freshman initiation, held on September 19 and 20.



Sue Garrett, student photographer for school publications, received a few pointers on the lens settings for cameras from Sister Jeanne Francis before leaving for the annual yearbook conference held at Del Mar Auditorium.

Gwen Allen, Patsy Kusenberger, Rose Marie Orsak, Alice Kaye Rich, Marjorie Brown, Mary Stella Alvarez, Elia Villarreal, Josephine Prado, Baby Rodriguez, Adela Gonzalez, and Lucy Durham enjoy the refreshments served at the coke party given by Sister George for all students who sold tickets on the car raffled at the annual chicken barbecue.



Newly elected prefect of Our Lady of Grace Sodality, Mabel Janecek, is shown during the installation ceremony held on October 5 in the convent chapel.



Glancing through school yearbooks at the Port Yearbook Clinic held October 8 at Del Mar College are staff members Betty Kay Morris, Frances Lauer, Rose Marie Orsak, and Alice Kaye Rich. (pictured at left).

Captain Christine Rachel escorted Joe Bill Shaw off the field after he was crowned as Sweetheart in the Powder Puff Football Game held October 29 at Saint Patrick's School between the Seniors and Freshman B. Following them are Banta Anderson escorted by Senior Co-Captain, Roberta Smith, and Val Link escorted by Freshman Captain, Rachel Torres. The game was one of the many projects held to raise money for the Penny Drive. The Seniors were the victors by a score of 8 to 0.



OCTOBER

Enjoying themselves at the Penny Queen Dance held October 22 in the I.W.A. cafeteria are Gloria Najera, Benny Martinez, Imelda Lozano, Arnold Gonzales, Judy Serna, Cruz Clemente, Alma Guerrero, Abel Salinas, Georgia Durham, and Victor Garcia. This was one of the many projects used to raise money for the Penny Drive held during the month of October.



Shown are the favorites as they were announced at the Favorites Dance held on October 30 in the school cafeteria. They are Senior favorites, Cristina Montemayor, Most Beautiful, Roberta Smith, Most Representative; Junior A favorites, Josephine Jones, Most Beautiful, Mary Louise Gerant, Most Representative; Junior B favorites, Magdalen Sulak, Most Beautiful, Sharron Richards, Most Representative; Sophomore favorites, Judy Serna, Most Beautiful, Susan Schubert, Most Popular, and Mary Alice Berlanga, Most Representative.



Sister Agnes Marie, directress of dramatics at Incarnate Word Academy, conferred with Mrs. Ann Martin of Miller High School, Mrs. Maragret Corbin of W. B. Ray, and Mrs. Ethel Greenwood of Solomon Coles regarding plans for the Speech Festival which was held in January.

Gloria Walters tried out for Student Directress of the choir. Several choir members tried out for this position. Charlotte Guerra was finally chosen and Gloria was picked as her assistant.

NOVEMBER

Delegates from the I.W.A. Alumnae, accompanied by Sister Jeanne Francis and Sister Benedict, attended a convention at Incarnate Word College in San Antonio. Archbishop Lucey, D.D., L.L.D., gave the opening address.



The basketball team spent many hours during the basketball season practicing for their games. During one of their practice sessions Celeste Pray, Patsy Kusenberger, Karon Walker, and Modena Nickens tossed balls into the basket.

Below: Rev. Msgr. Adolph Marx, J.C.D., blessed the new Smith Memorial Court in a ceremony which preceded the game between the Angels and Villa Maria girls of Brownsville.

ADMIT ONE
"BASKETBALL LUNCHEON"
 Sponsored by
 INCARNATE WORD ACADEMY ANGELS
 I. W. A. CAFETERIA
 NOV. 19th
 50c
 LUNCH - 11:30 A.M. GAME - 2:00 P.M.





The newly formed Schola, consisting of volunteers from the chant classes, sang a Requiem Mass in the Welder Memorial Chapel on the third day of the Jubilee Celebration of Spohn Hospital.



The traveling choir, directed by Mrs. Tom Boyd, Jr., and Charlotte Guerra, student directress, was caught in a candid shot as they ended their Christmas caroling on December 21.

Annual Mexican Supper
 INCARNATE WORD ACADEMY
 FRIDAY, DEC. 9, 1955 — 5-8 p.m.
 Plates \$1.00

The annual Christmas party for all students was held in the cafeteria on December 21, the last day of school before the Christmas holidays. Pictured below are a group of seniors as they enjoyed the refreshments that were served by the Student Council.



Carolyn Smith, Senior Class president, typified the general gaiety which prevailed throughout the school during the week preceding the Christmas holidays as she rides her tricycle around the Christmas tree in the Senior room.



Twice a year, the piano pupils present a recital in the band room. The fall concert, pictured here, featured a Christmas theme, with several of the high school girls playing a quartet arrangement of "Rudolph, the Red-Nosed Reindeer."



DECEMBER



Details of a contest, "An America Without Advertising," sponsored by the Corpus Christi Advertising Club were disclosed at a luncheon at the Driscoll Hotel. Representatives were present from all the local high schools. Mr. W. E. Webdell explained the contest to College-Academy representative, John Maskey, and Carol Hedrick and Betty Kay Morris from Incarnate Word Academy.

JANUARY



The homemaking classes enjoyed the meal cooked and served by Mrs. Betty Sue Garrett, home economics demonstrator for Central Power and Light Company, on January 31.

Speech practice sessions huddles like this one were taking place in all the senior high schools of the city and the surrounding area in the week preceding the Corpus Christi Speech and Drama Festival held at Del Mar College and W. B. Ray High School on January 27 and 28. Going over her poetry reading selection once more is Cora Lee Friesen. Her critic, Mary Rose Pena, also entered in poetry reading; Lucille Prado, entered in original oratory and after dinner speaking.



Mrs. John Walker, Mrs. Roy Rodriguez, and Miss Charlene Carter planned the publicity for the Ham Dinner, sponsored by the I.W.A. Alumnae, which was held in the I.W.A. cafeteria on January 29.



Rubinoff and his famous violin made beautiful music with "Davy Crockett," in 15 "versions", to an enraptured audience in the I.W.A. Band room.





About 300 high school girls attended an open house for prospective students on February 7 at James R. Dougherty, Jr., School of Nursing. Carmelia Fazio (second from right), a freshman at the school, shows a dummy used in training to Sharon Scott, Patsy Riley, and Mary Ann Chilen.

"Brotherhood Week" speakers made their annual visit to I.W.A. on February 21 in the school band-room at 9:30 a.m. The speakers were: Col. Paul Mauler, Army Chaplain of Post Chapel, Fort Sam Houston; Rabbi Milton Bendiner, of Temple Beth El, Jewish; Fr. Emmett Walsh, O.M.I., Catholic; all of San Antonio, with Mr. Ted Scibienski, Chairman; and Sister Mary George, Principal.



FEBRUARY

The annual retreat for the students of I.W.A. was held on February 15, 16, and 17 at the Convent chapel. Reverend Ambrose Branz, O.S.B. was the retreatmaster.



Noelie Shaw, soloist, entered in the Music Festival at San Antonio, February 25, checked a few notes with the Directress, Mrs. Tom Boyd, Jr. Members of the traveling choir awaited instructions in the background.



Mary Lee Lewis, center, beams as she was named Belle of the Ball. Runners-up, from left to right were: Susan Schubert, Lorene Foyt, Charlotte Guerra, and Patsy Trainor.

Zaida DeLeon, I.W.A. Senior, sponsored by the Mothers' Club, represented the Empress Eugenia Period in the Mardi Gras Court.





Mother Patricia was honored guest at Saint Patrick's Day assembly presented by the student body. The Junior "A" Class above sang Schubert's "Ave Maria" in her honor.

The Right Rev. Adolph Marx, J.D.C. was one of the guest speakers on the Vocation Week program at I.W.A. March 8. Msgr. Marx spoke on vocations in general.

Dresses for the sewing contest sponsored by Bruner's, Inc. for I.W.A. homemaking students, were judged by Miss Jeanette Rachel, Mrs. Bob Hulbirt, and Mrs. Betty Sue Garrett.



Elia Villarreal, senior, proudly displayed her dress which won first prize of \$20. Her slim dress was of printed pongee with a beige linen duster and brown accessories.



MARCH

President of the Catholic Band Fans Organization, Mr. Paul Friesen, discusses the Notre Dame Band Concert ticket sales with Mr. John Kaler, Mrs. Kaler, and Mrs. E. W. Speed.



Easter time found Carol Jean Brown and Marv Rose Pena, Junior Confraternity Helpers, helping to prepare Easter baskets for distribution.



Sister Agnes Marie gave pointers to Elia Villarreal, Adela Gonzalez, and Cora Lee Friesen before the St. Thomas' High School Debate Tournament held in Houston on April 13th and 14th.

APRIL

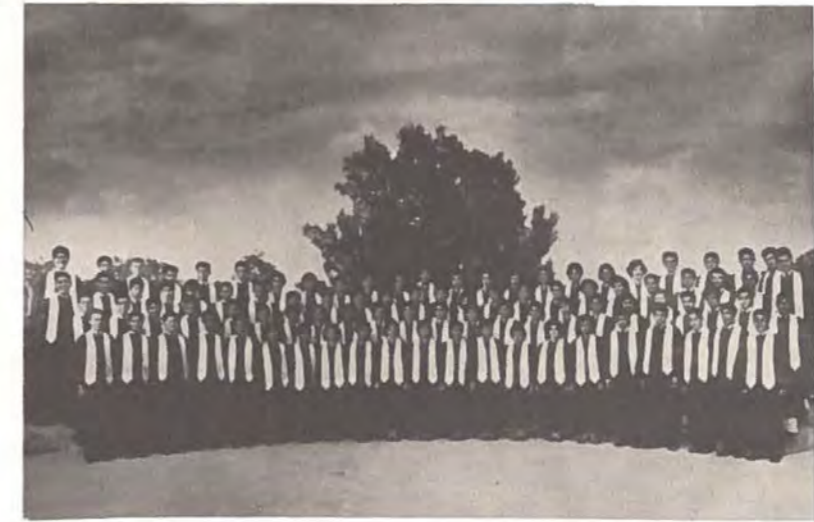
The Catholic Band Fans sponsored the appearance of the Notre Dame Concert Band here in Corpus Christi. Proceeds were used to purchase a bus for the use of the Band. Preceding the concert, on the 4th, all local Catholic school bands appeared in a Band Festival in the Coliseum.



Freshman general science students demonstrated the techniques learned during the Junior First Aid course. Sophomore biology students took the Standard First Aid course in May. Those who pass these courses earn their Red Cross certificates since Sister Jeanne Francis, who teaches the courses is a qualified instructor.



The Catholic Choir Contest, sponsored by the I.W.A. Choir, included entries from schools all over the diocese. Our I.W.A. group placed in the highest ranking, "Superior." The combined group from Laredo, from St. Joseph's and Ursuline Academies, took home the trophy.



History was made at I.W.A. when seniors were given permission to wear Bermuda shorts to the annual school picnic at Lake Corpus Christi, April 17th.



Winners of local essay contests were announced at a special assembly on April 9th. Then the whole school was dismissed for a holiday.



Incarinate Word Academy
and
Corpus Christi College Academy
request the presence of

at their
Junior - Senior Prom
on Friday evening, May the eighteenth
from eight to twelve o'clock
Corpus Christi Country Club

Carol Brown, chairman; Norma Jiminez,
Sandra Sanders, and Christine Rachal, co-
chairmen; put the finishing touches on the
prom decorations. The theme of this year's
prom was "Under Tropical Seas."

Gloria Walters discussed plans for Future Freshman Day with Elia Villarreal and Mary Nidia Rodriguez. Future Freshman Day was held on May 2. Eighth graders from all the local Catholic schools and several out of town schools attended and a good time was had by all.

MAY



All high school days point toward the final date of Baccalaureate and Commencement. Baccalaureate was held at the Corpus Christi Cathedral on May 20, 1956.



Her majesty, Lorene, Queen of the House of Foyt is pictured with her escort, Fred Boener, at the May Fete held at Incarnate Word Academy on May 20. The senior class acted as Guards of Honor.



Homemaking student, Rose Marie Orsak, was hostess at a luncheon, with her mother and sister as guests. Fellow classmate, Betty Henderson, acted as maid. Each senior homemaking student prepared either a luncheon or a dinner as a final project.

The Crowning of the Blessed Mother and the Living Rosary opened the month of May. Mabel Janeczek, high school sodality prefect crowned the Blessed Virgin while the student body sang, "Bring Flowers of the Fairest."





*The Faculty and Senior Class
of
Incarnate Word Academy
invite you to be present at the
Commencement Exercises
Thursday evening, May twenty-fourth
Nineteen hundred fifty-six
at eight o'clock
Del Mar Auditorium
Corpus Christi, Texas*



BACCALAUREATE SERVICE
MAY 20, 8:00 A. M.
CORPUS CHRISTI CATHEDRAL



Four long, hard years of studying were climaxed May 24, 1956, as the joint Commencement Exercises for Incarnate Word Academy and Corpus Christi College-Academy got underway. Sighs of relief and joy could be heard coming from the students as they received that all important paper—a signed diploma—from His Excellency, the Most Reverend M. S. Garriga, D.D., L.L.D.



Ed Harvin
CORPUS CHRISTI, TEXAS

BEST WISHES . . .
INCARNATE WORD ACADEMY
PORT PRINTING COMPANY
1618 S. Alameda — at Six Points



TOWER JEWELERS

1651 South Alameda

Phone TU 3-5901

PATRONS

- PARR'S SUBURBAN DRUGS
- PETTY CONSTRUCTION COMPANY
- STEWART & STEVENSON SERVICES
- BROWN'S HOBBY SHOP
- ROOSEVELT-BAKER PHOTO COMPANY
- NUECES FURNITURE COMPANY
- KELLY'S MUSIC STORES
- A. L. GRANTHAM GULF SERVICE
- MR. AND MRS. J. GERALD POWER
- MR. AND MRS. M. L. RAMIREZ
- THE COLLIER FAMILY
- THE PAUL BROWN FAMILY
- A FRIEND

*A
good start
on a*
GOOD FUTURE

*As a member of the
Class of 1956, you're off
to a good start!*

*May we congratulate you . . .
and wish you every success
in the years to come.*

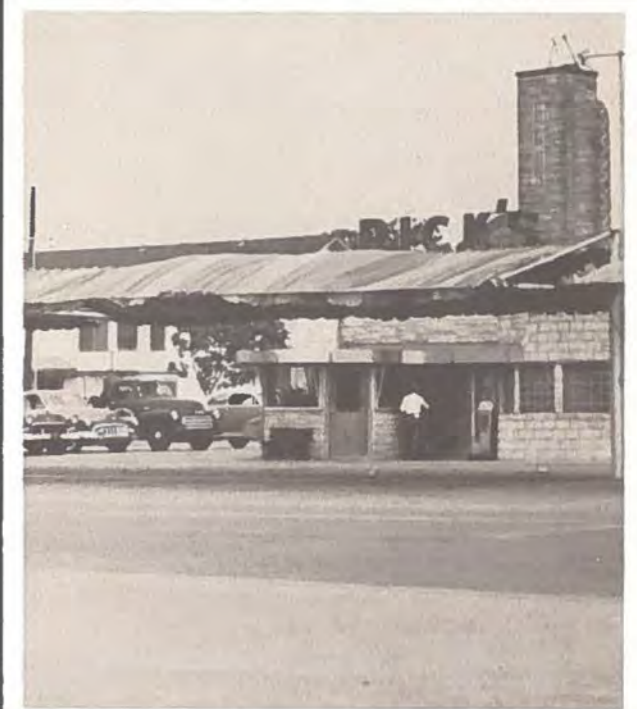
HUMBLE OIL & REFINING COMPANY



Two Stores To Serve You

UPTOWN
701 Leopard

DOWNTOWN
401 N. Chaparral



Compliments of . . .

PICK'S

2002 Ayers

Phone TU 2-7031

COMPLIMENTS OF . . .

**CORPUS CHRISTI CHURCH GOODS
COMPANY**

"Your Catholic Supply Center"

136 Mesquite Street
CORPUS CHRISTI, TEXAS
Phone TU 2-6682

HEADQUARTERS FOR . . .

JOHNSON OUTBOARD MOTORS
SHERWIN-WILLIAMS PAINTS

PYREX DINNERWARE
SMALL APPLIANCES

HUNTING AND FISHING EQUIPMENT



CENTER HARDWARE CO.

In The Portairs Shopping Center

4220 Ayers

Phone TE 5-0162

CONGRATULATIONS TO THE SENIORS

From



TERMINIX

VISIT THE . . .

TRI-DRIVE

• • •

GROCERIES

DRINKS

CHARCOAL BROILBURGERS



2220 South Staples

Phone TU 3-0101

Seitter's
CAMERA CENTER

ANSCO
ARGUS
BAUSCH & LOMB
BELL & HOWELL
CONTAX (Carl Zeiss)
DU PONT
EASTMAN KODAK
ELGEET LENSES
GENERAL ELECTRIC
GRAFLEX

HEILAND
KEYSTONE
LEICA
LINHOF
MINOX
POLAROID
ROLLEI
SYLVANIA
VOIGHTLANDER
WESTON

ZEISS (CARL)



PHOTO FINISHING

— SUPPLIES —

DRIVE-IN PARKING



dial TU 3-4771

824 SOUTH STAPLES



FOR OVER 20 YEARS, Bonham's has been the choice of discriminating homemakers who enjoy fine foods.



FAMOUS BRAND FOODS SINCE 1920

FAMOUS BRAND FOODS SINCE 1920

3006 ALAMEDA

4106 AYERS

LEXINGTON & WEBER

Bonham's

3006 S. ALAMEDA ★ 4106 AYERS

LEXINGTON and WEBER





Patsy Kusenberger and Betty Kay Morris Select Choice
Items for a "DREAM-HOME" at . . .

ALLEN'S FURNITURE COMPANY



BAKER MOTORS

815 North Water

Phone TU 4-2443



GULF DISINFECTANT COMPANY

1310 Agnes

Phone TU 2-6103



AMERICAN BOTTLING COMPANY

COMPLIMENTS
OF . . .
FRIENDLY
FINANCE SERVICE

★

HELEN STEVENS HOOD
Manager

CONGRATULATIONS . . .
TO THE SENIORS!

William
David
Bonilla

Compliments
of
ARMSTRONG LUMBER
Company

FIRST IN QUALITY
FAIREST IN PRICE
FASTEST IN SERVICE

• • •

4501 LEOPARD STREET
Corpus Christi, Texas
Dial TU 2-6514

BRASLAU
FURNITURE COMPANY

1001 LEOPARD STREET

—•—
Dial TU 3-9221

Corpus Christi, Texas

LUCKY STAR
School Supplies

South Texas Candy
Company

Compliments
of
SOUTHERN
MINERALS CORP.
SOUTHERN
PIPE LINE CORP.

Compliments of
RICHARDSON'S
SHOE STORE

NATIONALLY KNOWN
BRANDS

- Sandler
- Westport

THE FAMILY SHOE STORE OF
CORPUS CHRISTI



SHELL
CLEANERS AND LAUNDRY

CONGRATULATIONS
to the
GRADUATES

DR. AND MRS. J. E. BAUER
AND FAMILY

REFUGIO,
TEXAS



Mireur Leather Goods

Compliments of
NIXON BLUE PRINT CO.

Wilson Tower

BUSINESS PHONE: 4-7703 RESIDENCE PHONE: 2-2048

MATHIEU ELECTRIC COMPANY
Electrical Construction
C. M. MATHIEU

423 S. ALAMEDA

CORPUS CHRISTI, TEXAS

COMPLIMENTS OF
DUNNE FUNERAL SERVICE
ESTABLISHED 1908

CORPUS CHRISTI,

TEXAS

CENTRE BEAUTY SALON

315 Lawrence

Zella Balch

Owner



GREEN'S
Jewelers



COMPLIMENTS

OF

MR. PHIL ROBINSON

For the Latest in . . .

LADIES'

HOBBY SUPPLIES ALWAYS

See . . .

BINZ
SHELL STORE

1314 N. WATER

CHILDER'S
WHOLESALE
COMPANY

Nifty School Supplies
Candy — Cigars — Cigarettes
Chewing Gum
Matches



SALEM'S JEWELERS

For Wise Buys in Building Supplies

S E E

NICHOLSON BUILDING SUPPLY CO.

SWANTNER AND GORDON

•
Insurance Counselors
•

Corpus Christi,

Texas



Compliments of

Leo's SHOES

For All The Family

4210 Ayers—Portaires Center

SWARD OPTICAL COMPANY
OPTICIANS

202 MEDICAL PROFESSIONAL BUILDING

CORPUS CHRISTI,

TEXAS

Compliments
of
ADOLPH ORSAK
& SONS

•
GENERAL
CONTRACTORS

Congratulations
to
STAFF AND STUDENT
BODY

MUTTERA'S
Federal Bakery



Harry P. Stuth

Harry P. Stuth, Jr.

A. Gordon Hurst

Compliments
of
BROONER STUDIO
1388 THIRD ST.

CORPUS CHRISTI, TEXAS

Portrait & Commercial
Photography

COMPLIMENTS
OF

WADE-GIBSON-MARTIN
ARCHITECTS

Corpus Christi, Texas

LEWIS BOGGUS

Your

FORD DEALER

101 Shoreline

Corpus Christi

HARLINGEN

McALLEN

COMPLIMENTS
OF

•
SAFETY GLASS
COMPANY

Your Friends
for
"STRICTLY MUSIC"



THE HORN SHOP

Trucks — Tractors

JESS EDWARDS, Inc.

Draglines — Maintainers

P. O. Box 2287

Corpus Christi, Texas

Compliments of

CORPUS CHRISTI
NATIONAL BANK

Member of Federal Deposit
Insurance Corporation

-- Al's News Stand --

415A PEOPLES STREET

MAGAZINES



DRINKS

COMPLIMENTS
OF

CORPUS CHRISTI
BANK & TRUST



*Member of Federal Deposit Insurance
Corporation*

TRINITY STEEL WAREHOUSE CO., Inc.

DISTRIBUTORS OF STEEL PRODUCTS

533 McBRIDE LANE

Corpus Christi, Texas

Compliments of

JOHN L. TOMPKINS & CO.

213 - 214 - 215
JONES BUILDING

Compliments

of

S & Q
CLOTHIERS



Nueces Hotel
Building

COMPLIMENTS OF
DR. PEPPER



Compliments of
GULF IRON WORKS

COMPLIMENTS
OF
STATE NATIONAL BANK
CORPUS CHRISTI, TEXAS

MEMBER
FEDERAL DEPOSIT INSURANCE CORPORATION

CONGRATULATIONS



2744-444

CENTRAL POWER
AND
LIGHT COMPANY

HARRIS
CONCRETE
TRANSIT-MIXED
CONCRETE PLANTS

• • •

Corpus Christi Phone TU 2-3356

Gregory Phone 2451

Victoria Phone 1991

COMPLIMENTS

OF

McCRACKEN
ELECTRICAL SERVICE

•
W. F. McCRACKEN — TED J. REMLING

•
P. O. Box 1385
KINGSVILLE, TEXAS

COMPLIMENTS

OF

Ridgway's

L. L. RIDGWAY CO.

- Architectural
- Engineering
- Supplies
- Blue Prints
- Photo Copies
- Film

516 Lawrence Phone TU 2-7471

CORPUS CHRISTI, TEXAS



KOSTORYZ & GOLLIHAR ROAD
 HWY. 9 & VILLA DRIVE
 822 LEOPARD
 2300 LEOPARD
 1403 THIRD

AGNES & 19th STREET
 3133 SOUTH ALAMEDA
 2818 NORTH WATER
 3001 AYERS
 3102 BALDWIN

THERE ARE 10 H.E.B. FOOD STORES IN
 CORPUS CHRISTI CONVENIENTLY LOCATED TO SERVE YOU



COMPLIMENTS

OF . . .

CORPUS CHRISTI
 THEATRES

CENTRE
 408 N. Chaparral

MELBA
 1016 Leopard

RITZ
 715 N. Chaparral

AYERS
 Ayers Street

AMUSU
 606 N. Mesquite

PORT
 Port Avenue

TOWER
 1647 Alameda (Six Points)

GULF DRIVE INN
 4044 South Port

GRANDE
 1015 Leopard

OSAGE DRIVE INN
 South Staples

GONZALEZ

PETROLEUM COMPANY

WASHING — GREASING

GAS — OIL — KEROSENE



Alonzo M. Gonzalez, *Manager*



501 North Staples Street Dial TU 2-0532

CORPUS CHRISTI, TEXAS

Farmers Insurance Group



FLOYD LEE & SON

3310 AYERS

Corpus Christi, Texas

GUTIERREZ

HUMBLE STATION

Manuel Gutierrez, *Dealer*

WASHING — GREASING — POLISHING
 ATLAS TIRES & TUBES — BATTERIES
 BRAKE SERVICE — MINOR REPAIRS

1025 Buffalo Phone TU 2-0821
 CORPUS CHRISTI, TEXAS

PHONE TULIP 3-8523

Frederick's . . .

FLOWERS & GIFTS



1667 South Staples

CORPUS CHRISTI, TEXAS

SHOECRAFTERS

COMPLETE SHOE REPAIRING — DYEING AND REFINISHING



1405 Third Street

(In the block across from Spohn Hospital)

Compliments

of . . .

EL ROSARIO FUNERAL HOME

715 NORTH STAPLES STREET

Phone TU 4-7005

Phone TU 2-8325

D X PRODUCTS

E. C. Valenta, Jr.

. . .

2101 AYRES

PHONE TU 4-7882

*FOR THE VERY BEST IN SEEDS, BULBS,
BEDDING PLANTS AND NURSERY
STOCK . . . GO TO—*

CURRIE'S SEED COMPANY AND NURSERY



907 - 917 SOUTH STAPLES STREET

Corpus Christi, Texas

CAGE'S

AYERS STREET STORE



3305 AYERS

PHONE TU 4-4959

SKEE'S HUMBLE SERVICE STATION

1110 WEST KING STREET



You Can't Beat Our . . .

HUMBLE SERVICE

. . . It's The Best in Town!

COMPLIMENTS

OF . . .

HOLLYWOOD CAFE



CORPUS CHRISTI, TEXAS



2737 Morgan

Telephone TU 4-6113

CORPUS CHRISTI BRICK & LUMBER COMPANY

121 North Staples

. . .

BRICK, PAINT & LUMBER OF ALL KINDS

Compliments
of . . .
KINGSVILLE
PUBLISHING COMPANY

INCORPORATED



Publishers of
THE KINGSVILLE RECORD
KINGSVILLE, TEXAS



111-5 SOUTH FIFTH PHONE 2-4305

COMPLIMENTS

OF

GUARANTY

TITLE & TRUST

JON - VON
SHOE SERVICE

DICK PRICKETT, *Owner*

—•—
No. 1 No. 2
1802 South Alameda St. 552 Old Robstown Rd.
At Six Points *In Shell Center*
DIAL TU 4-6262 DIAL TU 3-5582

BEST

WISHES

BELL ICE CREAM
COMPANY



CORPUS CHRISTI

CONGRATULATIONS!

JAY FLOYD
TELEVISION COMPANY
"THE BIGGEST TV MAN IN TOWN"



2727 Morgan

Phone TU 3-8766

Compliments of . . .
RAGLAND'S
of KINGSVILLE



Featuring The FINEST . . .
IN APPAREL FOR THE ENTIRE FAMILY

BEST WISHES!
ED HOFFMAN

Your

Plymouth Dealer

THE CAR FOR THE YOUNG IN HEART



800 NORTH WATER

PHONE TU 3-8585

CONGRATULATIONS!

WAREHOUSE TV CO.



2818 Ayres

Phone TU 3-8211

Compliments

Of

LAYTON

OPTICAL

COMPLIMENTS

OF

HELDENFELS BROTHERS



GENERAL CONTRACTORS

Compliments!!

YOUR

FOODCRAFT STORE

Compliments

of — — —

MARTIN SHOE STORE

LADIES' and CHILDREN'S SHOES



313 North Chaparral

Phone TU 2-6079



ALLIED PLUMBING SUPPLY COMPANY

BEST WISHES

to the

GRADUATES



SCOTT

LABORATORIES



ECONOMICAL DRUG CO.

1024 LEOPARD STREET

AUTOGRAPHS



JOHN W. PHILLIPS



GENERAL
CONTRACTOR

DOYLE'S
"DATED DRUGS"

PRESCRIPTION PHARMACIES

•

700 AYERS AT SANTA FE

•

CORPUS CHRISTI, TEXAS

ORD ACADEMY



THE SENIOR CLASS OF 1956