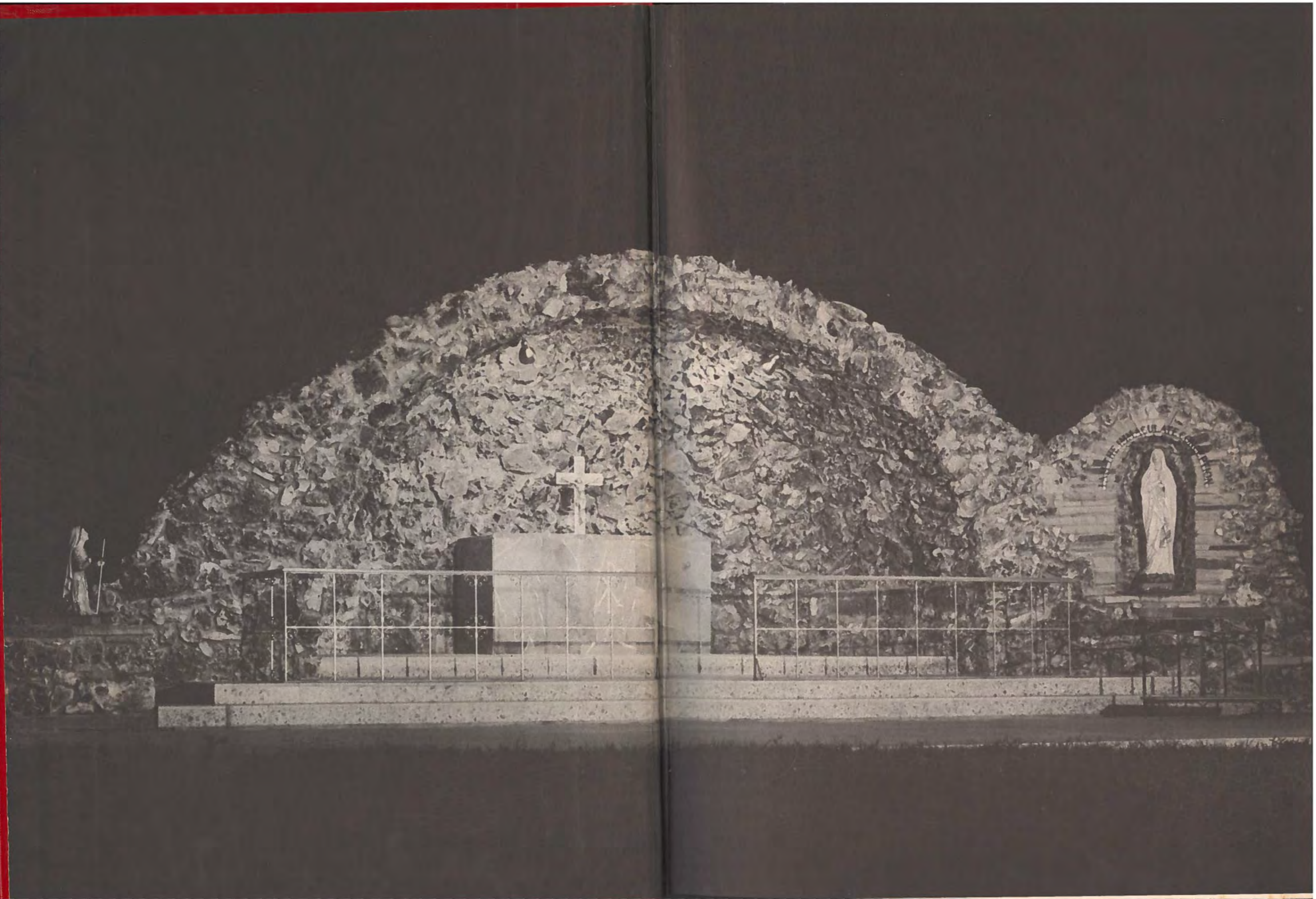




The Aurora

1959



Mary Immaculate Library
2930 South Alameda
Corpus Christi, Texas

THE AURORA

Incarnate Word Academy

Corpus Christi, Texas

1958-1959

Volume 35

A Private High School for Girls

Conducted by

The Sisters of the Incarnate Word and Blessed Sacrament

THE AURORA STAFF



The individual pictures above include: Jo Charles Brownlow, Madeline Meehan, Karon Walker, Sister Jeanne Francis, Kay Merryman, Theresa Bledsoe, and Anna Marie Durkota. Included in the group picture are: Anna Marie Durkota, Theresa Bledsoe, Karon Walker, Kay Merryman, and Judi Monahan.

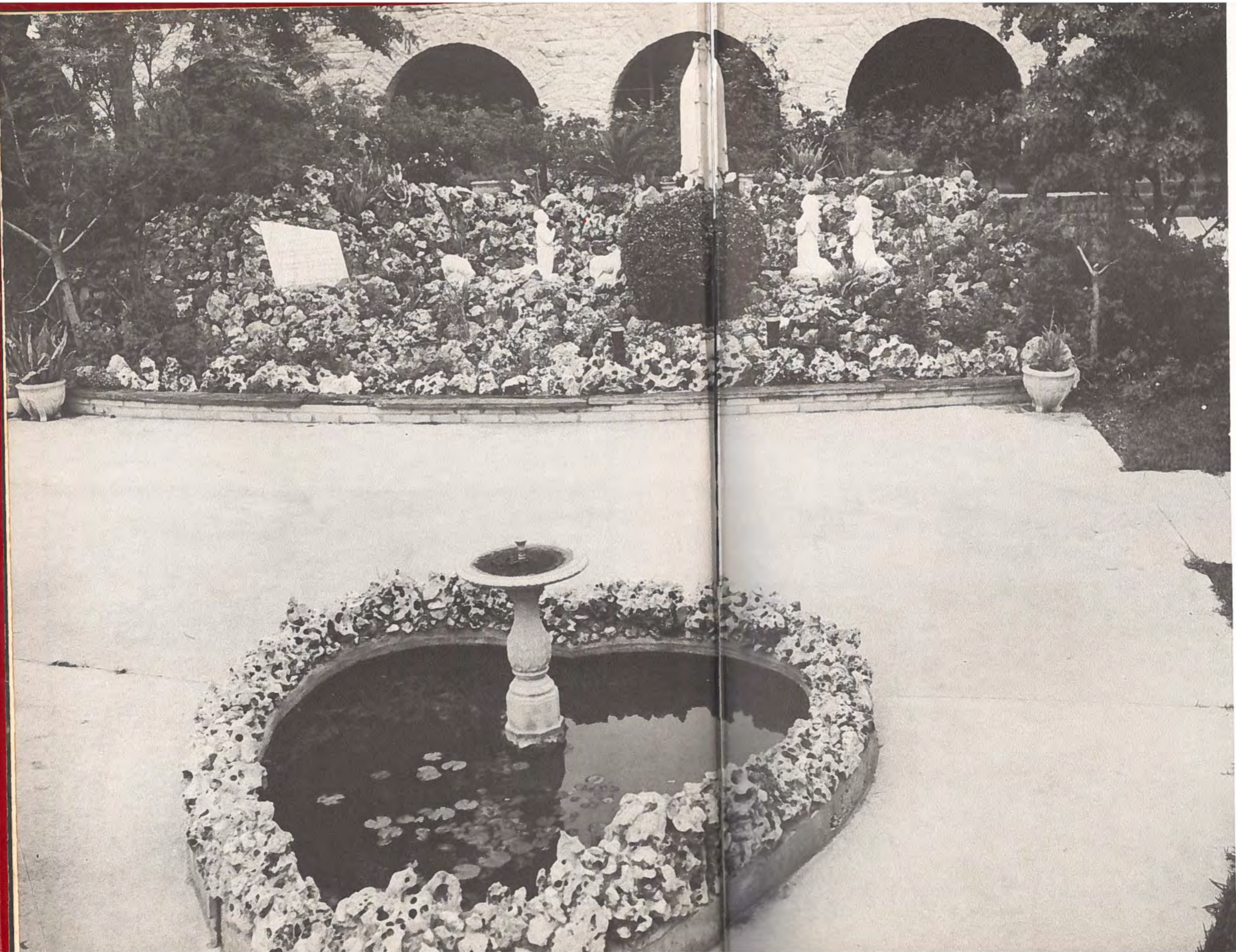
The Aurora of 1959 was prepared by:

Editor	Karon Walker
Copy Editor	Theresa Bledsoe
Staff	Madeline Meehan
	Anna Marie Durkota
	Jo Charles Brownlow
Advertising Manager	Kay Merryman
Assistant	Judi Monahan
Sponsor	Sister Jeanne Francis

The staff, along with their sponsor, Sister Jeanne Francis, spend many long hours selling ads, planning the book, pasting pictures, writing copy and sending bills, to present the students of Incarnate Word Academy with a complete pictorial record of the school year of 1958-1959 in the "years old" tradition of "All Texas" and "All Catholic."

CONTENTS

AURORA STAFF	2
CLASSES AND FACULTY	4
His Excellency, Bishop Garriga	6
His Excellency, Bishop Marx	6
Reverend Mother Mary Patricia	7
Sister Mary George	7
Religion	8
Language Arts	9
Social Sciences	10
Natural and Physical Sciences	11
Mathematics	12
Foreign Languages	13
Commercial Subjects	14
Homemaking	15
Music	16
Sports and Physical Education	17
STUDENT BODY	18
Seniors	20
Juniors	28
Sophomores	34
Freshmen	40
ORGANIZATIONS	46
Student Council	48
Beaker Breakers	49
Civics Club	50
Junior Confraternity of Christian Doctrine	51
Legion of Mary	52
Sodality of Our Lady of Grace	52
Spanish Club	53
Daughters of Rome	53
Mothers' Club	54
Alumnae Association	55
ACTIVITIES	56
September	58
October	60
November	62
December	64
January	66
February	68
March	70
April	72
May	74
PATRONS	76



O
U
R

C
L
A
S
S
E
S



His Excellency,
THE MOST REVEREND M. S. GARRIGA,
D.D., LL. D.,
Bishop of Corpus Christi

Sister Mary George
Principal of Incarnate Word Academy



Reverend Mother Mary Patricia
Superioress General of the Congregation of the
Incarnate Word and Blessed Sacrament



His Excellency,
THE MOST REVEREND
ADOLPH MARX,
D.D., J.C.D.,
Titular Bishop of Citrus,
and
Auxiliary Bishop
of
Corpus Christi



RELIGION . . .

The highest art, the art of true Christian living, is stressed in religion classes, one of the required four-year courses. This helps to develop in each girl a full, rich understanding of her faith. Guidance, counsel, and study assists in preparing each student for the future.

Sister Genevieve, Sister Agnes Marie, Sister Mary Caroline, and Sister Adrian Clare teach the religion classes.



Sister Mary Caroline



Sister Agnes Marie teaches Religion IV.



Students have opportunity to assist at Mass daily.

LANGUAGE ARTS . . .

English — Journalism — Speech

The language arts courses seek to instill in each girl the ability to convey her thoughts effectively, through speech and through writing. The study of grammar, punctuation, and composition are considered basic in equipping the student with fluency and coherency in her native language. A thorough-going appreciation of great literature accompanies these studies.

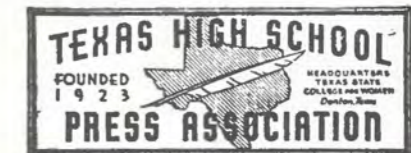
English teachers include Sister Aquinas, Sister Luke, Sister Agnes Marie, Mrs. Daugherty, and Mrs. Rex. Mrs. Daugherty also teaches journalism and speech, directing the activities of the speech and drama department of the school and serving as advisor for the school paper.



Sister Aquinas' students learned the fine points of grammar and proper expression so well that they won a number of essay contests! The first semester is taken up with a study of literature, while second semester work is concentrated upon the rules of grammar and practice in composition.

The school paper, THE CROWN, is published about once a month. Journalism students, as part of their class work, edit and rewrite stories turned in by the various class and club reporters. All of the reporters assist in procuring advertisements to help finance the publication. Class reporters distribute the paper to the student subscribers when the paper "comes out."

CROWN STAFF



International Honor Award

All Catholic

Texas Catholic Journalists Workshop
"Award of Distinction"

Published Monthly by and for the Students of
Incarnate Word Academy
Corpus Christi, Texas

Under the Direction of the Journalism Class

Principal	Sister Mary George
Faculty Sponsor	Mrs. Robert A. Daugherty
News Editor	Pat Hughes
Feature Editor	Mary Jo Wagner
Make-Up Editor	Rosie Mirabal
Business Manager	Anne Rodholm
Circulation Manager	Lynn Moore
Advertising Manager	Anna Marie Durkota
Reporters	Kathleen Celum, Mary Estes, Susan Milloy, Anna Marie Durkota, Sally Caddell, Merle Walker, Mary Beth Mireur, Ricki Shults, Elaine Phillips, Karon Walker, Patti Ayres, Annie Goetsch, Marie Stillman, Judy Allis, Peggy Grieve, Susan Smith, and Emily Vesely.

SOCIAL SCIENCES . . .

American History — World History — Government

A study of past events can assist in providing understandings about both the present and the future, while a study of government will mold good citizens. A study of current events is watching history being made in these portentous days.

Sister Mary Stanislaus teaches government and world history, with Mrs. Sheridan also teaching classes in the latter subject. Sister Xavier and Sister Genevieve teach American history.

Sister Genevieve listened as Theresa Bledsoe explained a passage of the American history book.



NATURAL SCIENCES . . .

Biology — Chemistry — General Science

A study of the natural phenomena of one's environment will instill a deeper appreciation of the laws governing the creation and sustaining the universe and its creatures. Here the student is brought to realize that the so-called conflict between science and religion does not exist; only a Master Plan can explain the mysteries of His creation.

Science classes are taught by Sister Jeanne Francis.

Chemistry students emphasize laboratory practice.



Sister Stanislaus received an answer to a question she asked in world history.



Biology classes use modern equipment and techniques to study living things.



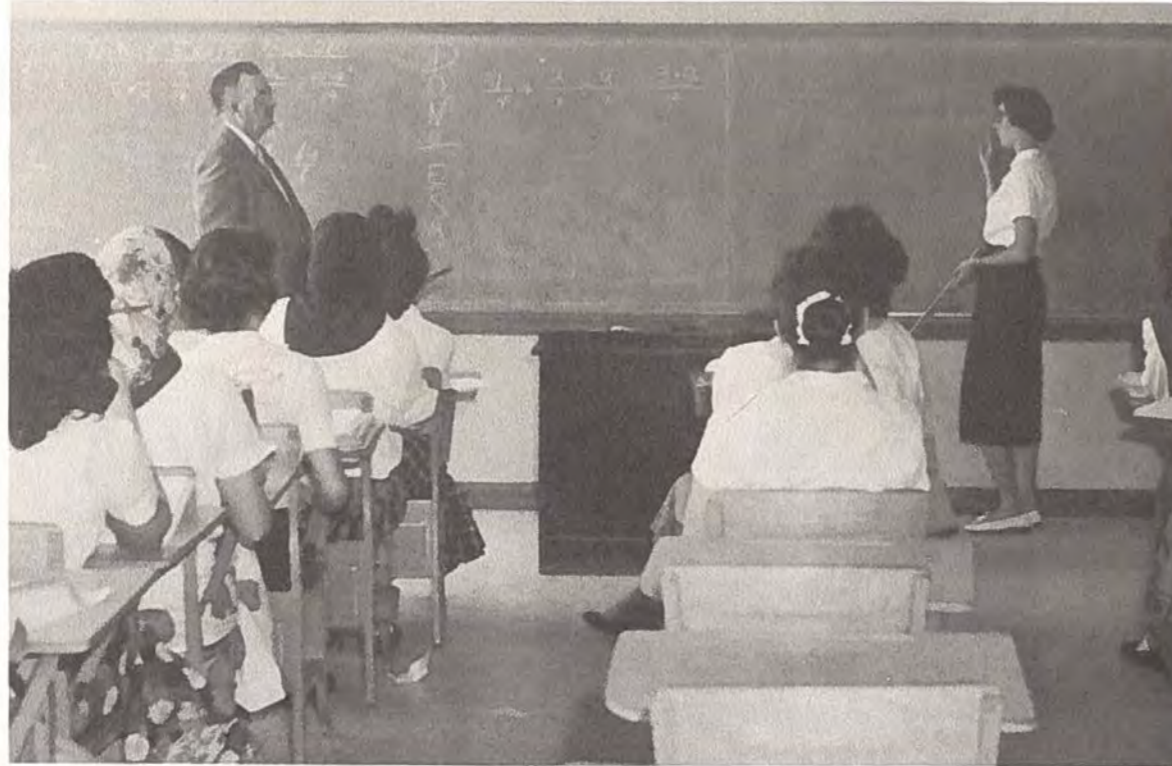
MATHEMATICS . . .

Algebra — Geometry — General Math

Mathematics courses provide training in the use of measurement and numbers. They develop methods of solving problems and each problem solved is a stepping stone in the field of reason.

Algebra is taught by Sister Anna Maria, Sister Genevieve, and Col. Warren. Sister Anna Maria also teaches geometry and general math, the latter course also being taught by Sister Genevieve, too.

Col. Warren's student explains her working out of the problem.



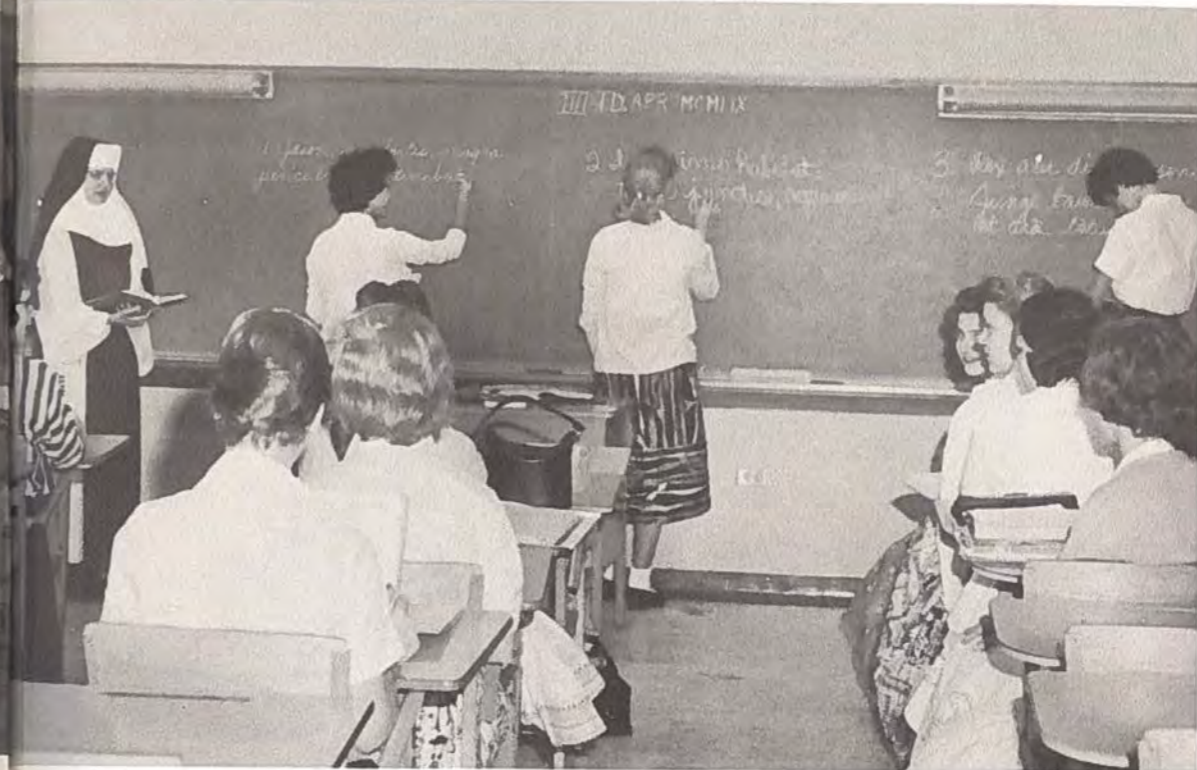
FOREIGN LANGUAGES . . .

Spanish — French — Latin

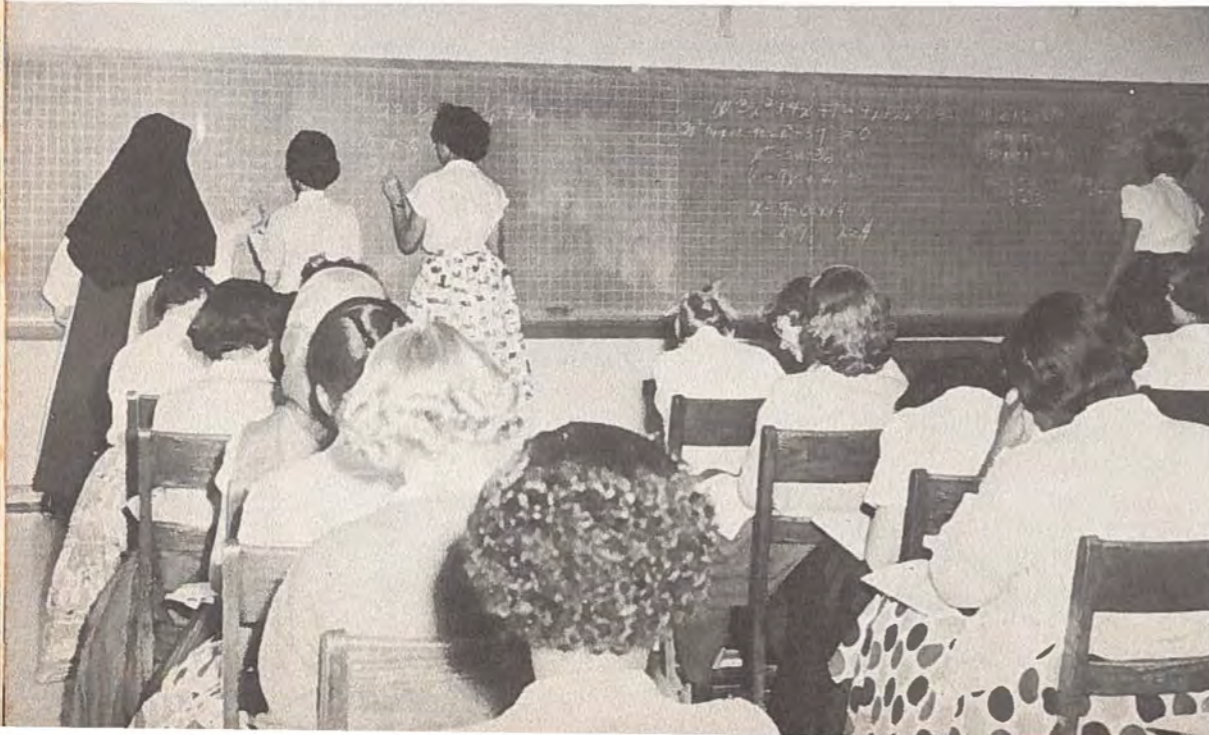
A study of foreign languages will provide a student with a variety of information about a country, a way of life, its heroes, great artists and their works.

Spanish is taught by Sister George and Sister Elizabeth; Sister Luke teaches the Latin classes, while Mrs. Rex teaches French.

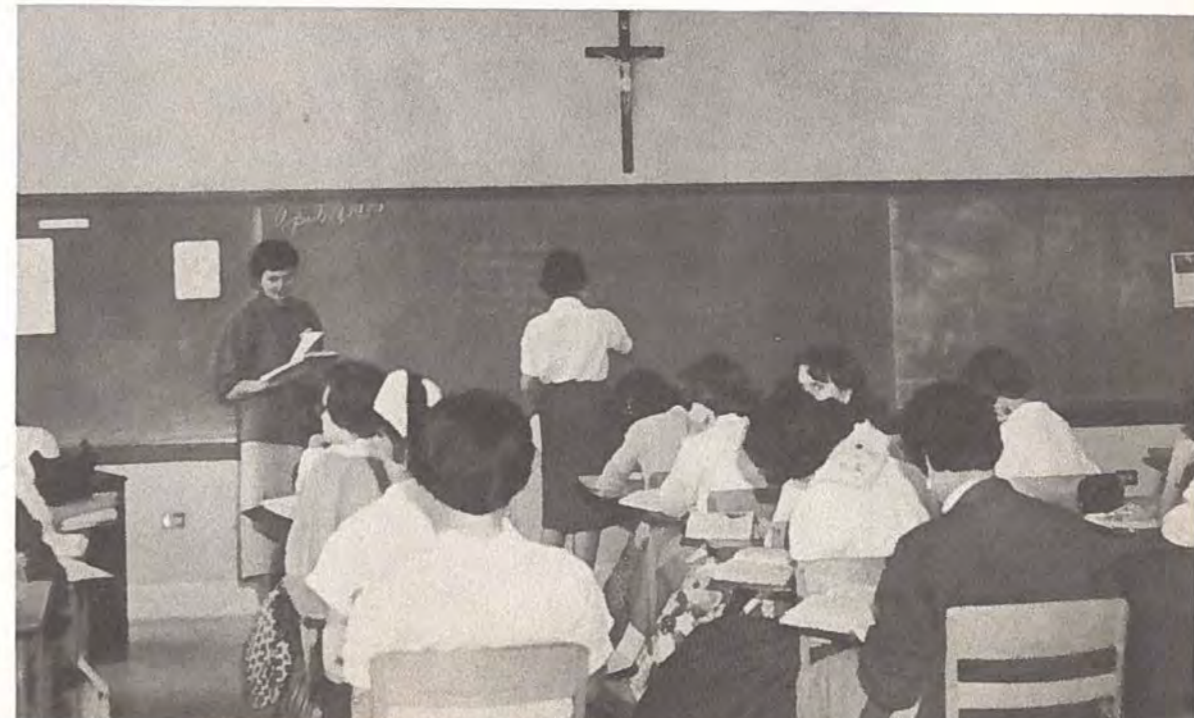
Sister Luke checks the translations offered by students at the board.



Sister Anna Maria shows how the answer is derived.



Mrs. Rex pronounces French as practice on proper accent.



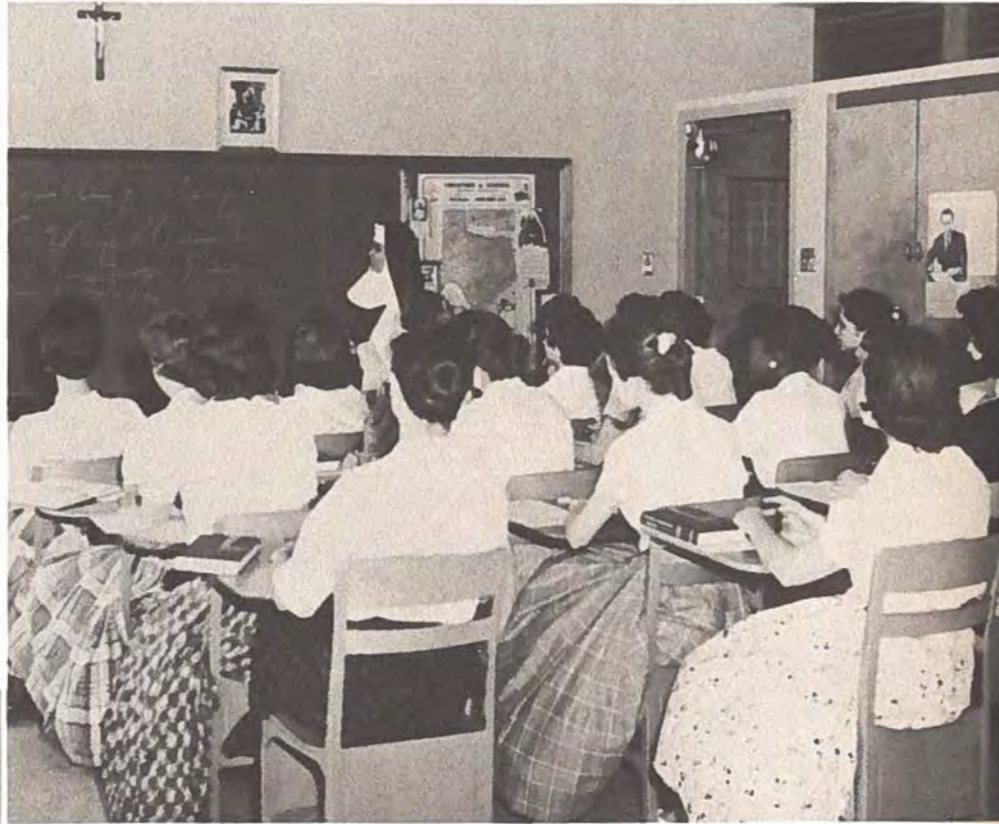
COMMERCIAL COURSES . . .

Stenography — Typing — Bookkeeping

These courses lay the foundation for successful careers for those who wish to enter the business world. Together with subject matter, the girls are taught correct business etiquette.

Sister Xavier teaches stenography, while Sister Anne teaches classes in typing and bookkeeping.

Sister Xavier initiates her students in the mystery of shorthand and office practice. So well taught are they that I.W.A. graduates with a certificate in shorthand and typing often have jobs waiting for them.



Typing, a tool subject useful to both terminal and college-bound students, is taught by Sister Anne.

HOMEMAKING . . .

Cooking — Sewing

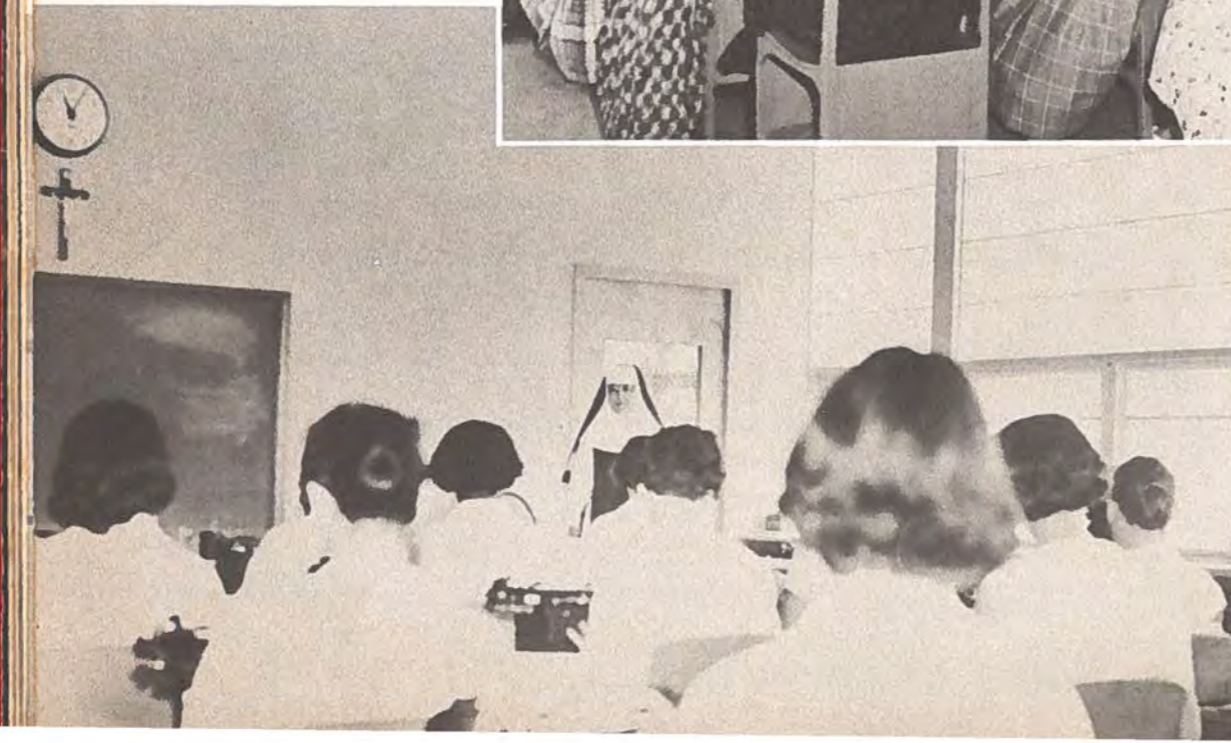
Today the homemaker is in the public spotlight. Well-equipped, modern homemaking facilities provide a laboratory for practice in the arts of the homemaker of tomorrow.

Sister Mary Elizabeth teaches the classes.



Each student learns to sew various articles of clothing. Many of these items are displayed in the showroom on the second floor. Frequently, tests are of the practical sort, wherein a student completes an assigned garment in a certain period.

Cooking classes demonstrate their acquired knowledge by serving various types of meals, dinners, party refreshments, and similar things. "The test is in the tasting."



Sister Joan, Head of Music Department and Teacher of piano and saxophone.



MUSIC . . .
Choral — Instrumental

Ample opportunities for instruction in various forms of music are provided for I.W.A. students.

Sister Joan and Sister Immaculada give lessons in piano technique. Mr. N. Saccomani teaches voice and choral singing. D. W. McCready gives group lessons to the girls who are in the Bishop's Band.

Mr. Dwight McCready and the Bishop's Band. I.W.A. girls are in this group.



The I.W.A. Choral Club with their director, Mr. Narciso Saccomani.



SPORTS . . .
Volleyball — Basketball — Softball

The more active of the students find an interest in sports, consisting principally of volleyball, basketball, and softball teams, using the name of ACADEMY ANGELS. Friendly competition with girls from other Catholic schools in the Gulf Coast area offer opportunities for the development of skills and sportsmanship, and the creation of new friendships with other students of similar ideals and background.





O
U
R

S
T
U
D
E
N
T
S



Gloria Sherek, Secretary; Mary Joe Wagner, Reporter; Jo Charles Brownlow, Historian; Rachel Torres, Parliamentarian; Kay Vreeland, Vice President; Sister Stanislaus, Sponsor; Joan Franks, President; Georgene Trice, Treasurer.

THE SENIOR CLASS

CLASS ACHIEVEMENTS

Valedictorian	Kay Vreeland
Salutatorian	Karon Walker
Student Council President	Darlene Aniol
Student Council Secretary	Gloria Sherek
Student Council Reporter	Joan Franks
Student Council Parliamentarian	Kay Vreeland
Beaker Breakers President	Carol Leonard
Civics Club President	Maria Klein
Civics Club Vice President	Carol Leonard
Civics Club Secretary	Barbara Floyd
Civics Club Treasurer	Donna Carlucci
Civics Club Parliamentarian	Georgene Trice
Civics Club Historian	Jo Charles Brownlow
Daughters of Rome President	Geraldine Petru
Daughters of Rome Vice President	Cleary Johnston
Our Lady of Grace Sodality Prefect	Geraldine Petru
"Our True Security" Contest, First Place	Lynn Moore
Third Place	Carol Neckar
Nueces County Medical Society Essay Contest, First Place	Mary Jo Wagner
Grand Prize, South Texas Science Fair	Kay Vreeland
I.W.A.-C.C.C.A. Interscholar Board	Kay Vreeland



SENIOR CLASS FAVORITES

MOST REPRESENTATIVE

Joan Franks

MOST POPULAR

Darlene Aniol

MOST BEAUTIFUL

Tykie Doyle

MOST LIKELY TO SUCCEED

Barbara Floyd



DARLENE ANIOL
Student Council President 4, Vice-President 3; All City Student Council 2, 3, 4; Class President 3, Representative 1, 2, 4; Glee Club 1, 2; Pep Squad 2, 3, 4; Civics Club 4; Play Festival 3.



JO ANN BLASCHKE
C.C.D. 1, 2, 3, 4.



BETTY BLEDSOE
Class Parliamentarian 2; Beaker Breakers 2; Civics Club 3, 4; Glee Club 1, 2; Aurora Staff 3; C.C.D. 2.



JANE DERBES
Latin Club 2, 3, 4, Parliamentarian 2; Civics Club 3; Pep Squad 1, 2, 3; Debate Club 4; C.C.D. 1, 2, 3, 4; Angels 3.



NAOMI "TYKIE" DOYLE
Class Representative 4; Glee Club 1, 2; Sodality 3; Beaker Breakers 2, 4; Civics Club 4; C.C.D. 1, 2, 3, 4; Pep Squad 3.



KAYE DUNNE
Glee Club 1, 2; Drama Club 4, Reporter 4; Beaker Breakers 2, 4; Civics Club 3, 4; Sodality 3; Pep Squad 3; C.C.D. 1, 2, 3, 4.



THERESA BLEDSOE
Band 1, 2, 3; Angels 4; Aurora Staff 4; Beaker Breakers 2, 4; Civics Club 3, 4; Latin Club 2; C.C.D. 1.



JO BROWNLOW
Class Historian 4; Civics Club 3, 4, Reporter-Historian 4; Spanish Club 4, Historian 4; Band 2; Beaker Breakers 2; Angels 3, 4; Aurora Staff 2, 3, 4.



DONNA CARLUCCI
Latin Club 1, 2, Treasurer 2; Civics Club 3, 4, Treasurer 4; Pep Squad 1, 3; C.C.D. 1, 2, 3, 4, Sodality 4.



HELEN JOYCE CARTER
Beaker Breakers 4; C.C.D. 4.



EDDY VIRGINIA DURHAM
Class Reporter 3; Debate Club 4, Secretary-Treasurer 4; Boarders' Club 1, 2, 3, 4, Vice-President 3, Secretary-Treasurer 4; Sodality 2, 3, 4; Vocation Club 2, 3; C.C.D. 1, 2, 3; C.C.D. 1, 2, 3, 4; Angels 2, 3.



PATRICIA FALCON
Beaker Breakers 3; C.C.D. 1, 2, 3, 4; Civics Club 4.



BARBARA FLOYD
Class Vice-President 2, Representative 3, 4; Civics Club 3, 4, Secretary 4; C.C.D. 1, 2, 3, 4.



BETTY FLOYD
Class Secretary 2, Treasurer 3; Debate Club 4, Vice-President 4; Civics Club 4; Sodality 3, 4; Pep Squad 3; Angels 1; C.C.D. 1, 2, 3, 4.



ROSARIO CHAPA
Glee Club 3, 4; Pep Squad 1, 2, 3, 4; Civics Club 4; Angels 2; C.C.D. 1, 2, 3, 4.



BARBARA CHATMAN
C.C.D. 1, 2.



MAXINE LEON DEMENT
Glee Club 1; Beaker Breakers 2, 4; C.C.D. 1, 2, 3, 4; Angels 4.



JOAN FRANKS
Student Council Historian 3, Reporter 4; Class Treasurer 1, Representative 2, Vice-President 3, President 4; All City Student Council 3, 4; Glee Club 1, 2; Civics Club 4; Pep Squad 3, 4; C.C.D. 1, 2, 3; Play Festival 3.



ROSIE FUENTES
Class Secretary 3, Representative 4; Glee Club 1; Band 3; Beaker Breakers 2; Angels 3; C.C.D. 4.



MARY ALICE GALVAN
Glee Club 2, 3, 4; Civics Club 3, 4; C.C.D. 1; Beaker Breakers 2.



MARY JO GARCIA
C.C.D. 1, 4; Civics Club 4.



JUDY HECK
Class Reporter 2; Civics Club 4; Latin Club 4; C.C.D. 1, 2, 3, 4; Pep Squad 2, 3, 4.



MARY LUCILLE HUEGELE
Latin Club 2; Pep Squad 2; C.C.D. 1, 2, 3, 4.



WANDA LUCAS



ANNE MABRY
Glee Club 1, 2; Civics Club 4; C.C.D. 4.



PANSY JO MADDOX
Beaker Breakers 2; Civics Club 4; Latin Club 3, 4; Pep Squad 2, 3, 4.



ANTONIA JIMINEZ
Class Parliamentarian 3; Band 2, 3, Majorette 2, Drum Majorette 3; C.C.D. 1, 2, 3, 4.



CLEARY JOHNSTON
Student Council Parliamentarian 3; Class Representative 1, President 2, Vice-President 3, Representative 4; Latin Club 4, Vice-President 4; Pep Squad 2, 3, 4, Manager 4; Glee Club 1, 2; C.C.D. 1, 2; Civics Club 4.



MARIA KLEIN
Civics Club 3, 4, President 4; Beaker Breakers 4.



JEANNINE KUNTSCHER
Glee Club 4; Sodality 4; C.C.D. 4; Boarders Club 4.



MARY MARGARET MALISH
Civics Club 4; Latin Club 4; Pep Squad 3; Legion of Mary 3; C.C.D. 4.



JEANIE MAYFIELD
Boarders Club 2, 3, 4, President 4; Vocation Club 2, 3; Sodality 2, 4; C.C.D. 4; Legion of Mary 4.



ROSIE MIRABAL
Glee Club 2, 3, 4; Beaker Breakers 2; Civics Club 3, 4; C.C.D. 1; Angels 2.



LYNN MOORE
Beaker Breakers 4; Civics Club 4; Crown Staff 4; Debate Club 4.



CAROL LEONARD
Student Council Reporter 3, Class Representative 1, 2, 3, 4; Glee Club 1, 2, 3, Representative 2, Secretary-Treasurer 3; Beaker Breakers 2, 4, President 4; Civics Club 3, 4, Vice-President 4; Pep Squad 3, 4, Treasurer 4; C. C. D. 1, 2, 3, 4.



ELVIRA FIELD LOZANO
Civics Club 4; C.C.D. 2, 3, 4.



IMELDA LOZANO
Glee Club 4; Beaker Breakers 2; Civics Club 4; Pep Squad 1, 2, 3; C.C.D. 1, 2, 3, 4; Angels 2.



CAROL NECKAR
Class President 1, Vice-President 2, President 3, Representative 4; Pep Squad 1, 2, 3, Cheerleader 3; Glee Club 1, 2; Civics Club 4; Sodality 1; C.C.D. 2, 3, 4; Debate Club 1.



JO ANN NELSON



JACQUELINE NEUMAN
Pep Squad 3; C.C.D. 3, 4.



GERALDINE PETRU
Band 1, 2, 3, President 2, Vice-President 3; Latin Club 4, President 4; Boarders Club 1, 2, 3, 4, Reporter 1, President 3, Vice-President 4; Sodality 2, 3, 4, Prefect 3, 4; Vocaton Club 1, 2, 3.



MODENA MARIE NICKENS
Angels 1, 2; Civics Club 4; Sodality 1; Debate Club 4; C.C.D. 1, 2.



DOROTHY O'DOCHARTY
Pep Squad 3; C.C.D. 1, 2, 4.



RACHEL TORRES
Class Parliamentarian 1, 4, Representative 3; Drama Club 4, Parliamentarian 4; Civics Club 3, 4; Angels 2; C.C.D. 1, 2, 4.



GEORGENE TRICE
Class Treasurer 3, 4; Band 2, 3, Majorette 2, 3; Civics Club 3, 4; Parliamentarian 4; C.C.D. 1, 2, 3, 4, Secretary of Apostles 3; Latin Club 2, 3.



ANGELICA VASQUEZ
Beaker Breakers 2; C.C.D. 1; Band 2; Civics Club 3, 4; C.C.D. 1.



KAY PRIOUR
Pep Squad 2; Beaker Breakers 2; Sodality 1, 2; Latin Club 2; C.C.D. 1, 2, 3, 4; Civics Club 3, 4.



PHYLLIS ROBINSON
Class Representative 4; Glee Club 1, 2; Pep Squad 2, 3, 4, Cheerleader 4; Civics Club 3, 4; Latin Club 1, 2, 3; C.C.D. 1, 2, 3, 4, Parliamentarian of Apostles 3, Chairman of Apostles 4.



NANCY MAE SAMPERI
Angels 3; Latin Club 1, 2, 3, 4; C.C.D. 1, 2, 3, 4.



MARY ANN VIET
Class Parliamentarian 3; Pep Squad 2, 3; Civics Club 3, 4; Sodality 3, 4; Debate Club 4; C.C.D. 1, 2, 3, 4.



KAY VREELAND
Class Secretary 1, Reporter 3, Vice-President 4; All City Student Council 4; Latin Club 1, 2, 3, President 2; Debate Club 4, President 4; C.C.D. 1, 3, 4; Civics Club 3, 4; Pep Squad 3; Crown Staff 3; Vocation Club 2; Angels 2; Inter-School Board.



MARY JO WAGNER
Class Reporter 3, 4; Glee Club 1, 2; Crown Staff 4, Feature Editor 4; Latin Club 1, 2, 3, 4; Pep Squad 3; C.C.D. 4; Drama Club 4.



GLORIA SHEREK
Student Council Secretary 3, 4; Class Secretary 2, 3, 4; All City Student Council 3; Pep Squad 2, 3, 4, Cheerleader 3, 4; C.C.D. 1, 2, 3, 4, Secretary 4; Latin Club 2, 3; Civics Club 4; Angels 2.



LORETTA SKROBARCEK
Class Vice-President 1, Historian 2, Representative 4; Latin Club 1, 2, 3, Secretary 2; Civics Club 3, 4; Pep Squad 1, 2, 3; C.C.D. 1, 2, 3, 4; Vocation Club 2.



MARY SUE SOUTHERNWOOD
Crown Staff 3, Feature Editor 3; Debate Club 4, Reporter 4; Latin Club 1, 2, 3, 4; Vocation Club 3; C.C.D. 1, 3, 4.



KARON WALKER
Class Parliamentarian 2; Beaker Breakers 2, 3, 4, Treasurer 3; Aurora Staff 2, 3, 4, Editor-in-Chief 4; Band 1, 2, 3, Sergeant-at-Arms 3, Librarian 3; Crown Staff 4; Latin Club 1, 2; Civics Club 3, 4; Debate Club 2, 3; Vocation Club 1, 2; Play Festival 2, 3; C.C.D. 1, 2, 3, 4.



ROSEMARY CAIN
Beaker Breakers 3; C.C.D. 3.



ROSIE LOZANO
Civics Club 4.



Jeannette Stryk, B Treasurer; Sister Agnes Maria, B Sponsor; Sister Aquinas, A Sponsor; Louise McMahon, B Secretary; Paddy Dunne, A Treasurer; Katherine Ahr, A Vice President; Sandra Treptow, B Vice President; Genevieve Wahl, B President; Ofelia Garcia, A President; Helen Havelka, A Secretary.

THE JUNIOR CLASS

CLASS ACHIEVEMENTS

Student Council Vice President	Louise McMahon
Student Council Treasurer	Katherine Ahr
Student Council Historian	Marcia Chamberlain
Beaker Breakers Vice President	Pat Haven
Beaker Breakers Secretary	Diane Shackelford
Beaker Breakers Treasurer	Geraldine Hoelscher
Beaker Breakers Reporter	Marilyn Birmingham
Junior Confraternity of Christian Doctrine, President	Ofelia Garcia
Secretary	Sandra Treptow
Parliamentarian	Elizabeth Sefcik
Our Lady of Grace Sodality Vice President	Barbara Mathieu
Our Lady of Grace Sodality Secretary	Ofelia Garcia
Our Lady of Grace Sodality Treasurer	Barbara Worrel
Spanish Club President	Pat Hughes
Spanish Club Treasurer	Geraldine Hoelscher
I.W.A.-C.C.C.A. Interscholar Board	Katherine Ahr



JUNIOR CLASS FAVORITES

MOST POPULAR
Nancy Knox

MOST BEAUTIFUL
Betty Jane Koller

MOST REPRESENTATIVE
Genevieve Wahl

MOST LIKELY TO SUCCEED
Marcia Chamberlain



Katherine Ahr
Dorothy Jean Allen
Bernadine Benys



Marilynn Birmingham
Carolyn Blumberg
Doretta Borton



Shirley Breland
Mary Jo Cernock
Marcia Chamberlain



Elizabeth Cox
Carolyn Daily
Marilyn De Cordova



Eva De Leon
Paddy Dunne
Carmen Enriquez



Karyn Farrow
Pat Ferris
Mary Franks
Diana Corkill



Wanda Franz
Mary Gansle
Ofelia Garcia



Anna Marie Gonzalez
Helen Havelka
Pat Haven



Mary Ida Heizer
Geraldine Hoelscher
Pat Hughes



Sandra Ivy
Evelyn Jackson
Gerrie Johnson



Nancy Knox
Betty Jane Koller
Sylvia Leal



Margaret Leland
Patricia Linney
Jeanene Machick
C. A. Martin



Barbara Mathieu
Louise McMahon
Madeline Meehan



Kay Merryman
Susan Meurer
Shelby Miller



Angie Montez
Mary Helen Montuori
Sherri Ann Moore



Bernice Netek
Connie Nickens
JoAnn Noser



Patricia O'Docharty
Patricia Paar
Beatrice Perez



Mary Nan Polasek
Anne Rodholm
Estella Rodriguez



Lucille Saldivar
Margaret Lee Scott
Elizabeth Sefcik



Diane Shackelford
Joyce Stokes
Mary Ann Stoner



Betty Lou Strakos
Jeannette Stryk
Zanda Taylor



Eloise Tolin
Sandra Treptow
Barbara Tudyk



Julia Uehlinger
Emily Vesely
Genevieve Wahl



Rhoda Walden
Barbara Worrel
Barbara Williams



Pat Murray, C Secretary; Sister Genevieve, A Sponsor; Sister Anne, B Sponsor; Sister Jeanne Francis, C Sponsor; Margaret Sefcik, C Secretary; Jo Ann Doffing, A Secretary; Alma Garcia, A Vice President; Lillian Anderson, A President; Frances Grossman, B President; Mary Helen Kennedy, B Vice President; Mary Beth Priour, C President; Betty B. Wagner, C Vice President.

THE SOPHOMORE CLASS

CLASS ACHIEVEMENTS

Spanish Club Historian	Jeanette Fogaley
Spanish Club Parliamentarian	Susanne Krause
Daughters of Rome Secretary	Mary Alice Walsh
Daughters of Rome Treasurer	Mary Helen Kennedy
Daughters of Rome Reporter	Frances Grossman
Daughters of Rome Parliamentarian	Celeste Neuman
Delegate to STASC	Mary Beth Priour
Delegates to TASC Convention	Lillian Anderson, Frances Grossman
Bishop's Band Majorettes	Carol McGill, Madeline Pelligrino
I.W.A. Science Fair Winners, Biology Division	Lillian Anderson, Mary Jane Blaschke
I.W.A.-C.C.C.A. Interscholar Board	Lillian Anderson



SOPHOMORE CLASS FAVORITES

MOST LIKELY TO SUCCEED

Mary Jane Blaschke

MOST REPRESENTATIVE

Frances Grossman

MOST POPULAR

Mary Beth Priour

MOST BEAUTIFUL

Mary Ann Herndon



Diana Aquilar
 Judy Allis
 Lillian Anderson
 Sara Bitoni



Mary Jane Blaschke
 Barbara Bopko
 Edream Borders
 Karen Sue Buck



Sally Caddell
 Maria Canedo
 Mary Helen Cantu
 Sandra Carpenter



Frances Case
 Mary Dolores Ceballos
 Kathlen Celum
 Lorraine DePaolo



Pauline Diaz
 Jo Ann Doffing
 Kathryn Drozd
 Anna Maria Durkota



Beth Elzner
 Mary Estes
 Irma Fabela



Irene Falcon
 Gloria Fernandez
 Diane Finley
 Judy Flores



Jeannette Fogaley
 Alma Garcia
 Sylvia Garcia
 Sandra Glorfield



Peggy Greive
 Frances Grossman
 Gloria Gutierrez
 Norma Gutierrez



Anna Maria Guzman
 Josephine Harrod
 Mary Lou Hernandez
 Mary Ann Herndon



Luisa Hinojosa
 Barbara Jackson
 Mary Helen Kennedy
 Susanne Krause



Melanie Leidy
 Patsy Leonard
 Josephine Levek





Rita Mabry
Sue Mason
Cathy McAtee
Carol Ann McGill



Yolanda Medina
Lynne Miller
Sharron Miller
Judy Monahan



Patricia Murray
Pamela Nelson
Celeste Neuman
Madeline Pellegrino



Elizabeth Petru
Nancy Petzel
Elaine Phillips
Mary Beth Priour



Gloria Ramirez
Vicki Rasmussen
Dorothy Reindl
Gloria Rios



Mary Lane Ritchie
Alice Robinson
Adelia Rodriguez
Betty Jo Roland



Patricia Rutledge
Georgette Sahadi
Jeanne Scanlon
Margaret Sefcik

Joyce Shirley
Susan Smith
Mary Beth Snapka
Day Lee Snell

Evelyn Soliz
Rebecca Soliz
Susan Stacy
JoAnn Sturm

Gloria Suarez
Alice Tamez
Mary Turner
Sharon Ulrich

Betty B. Wagner
Patricia Walbert
Merle Walker
Josephine Walsh

Mary Alice Walsh
Jackie Williams
Karen Wieland
Sandra Wallace

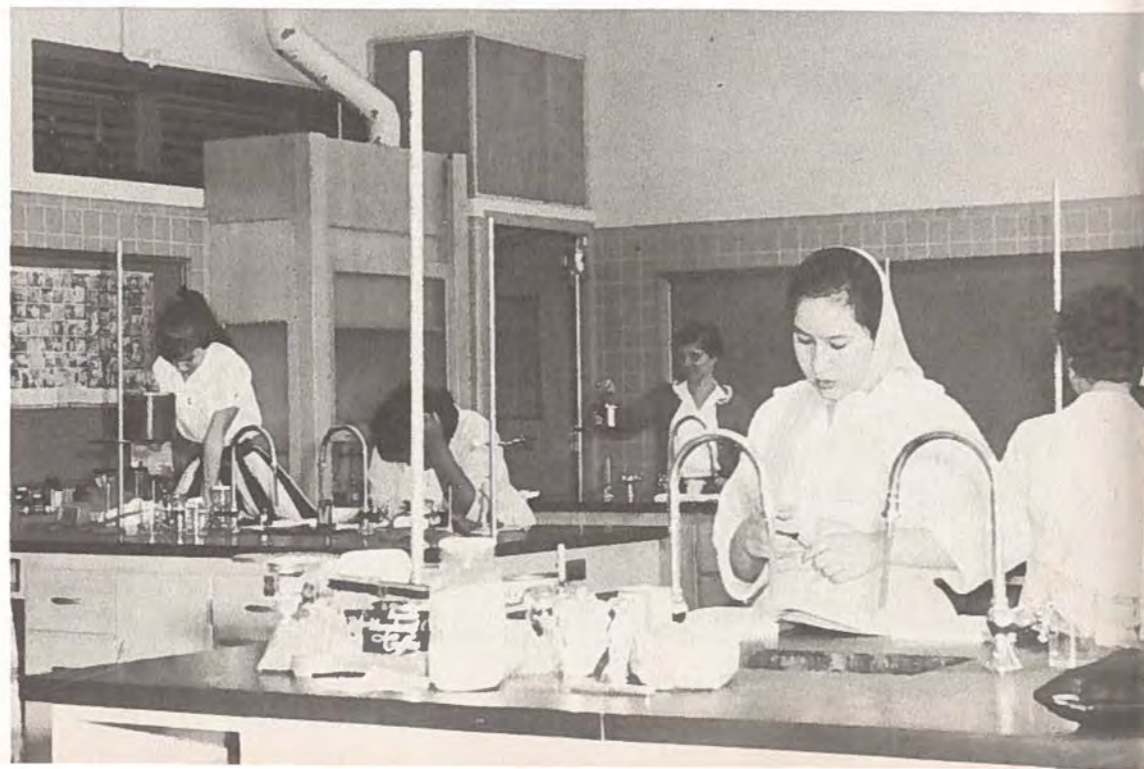




Kay Connors, A President (first semester); Gracie Gonzales, B President; Joyce McCullough, C President; Greer Burris, A President (second semester); Cathy Sprakman, D President (second semester); Judy Walden, D President (first semester); Sister Elizabeth, C Sponsor; Sister Mary Caroline, B Sponsor, Mrs. Sheridan, A Sponsor; Sister Anna Maria, D Sponsor.

THE FRESHMAN CLASS

Freshman general science students enjoyed laboratory experiences.



FRESHMAN CLASS FAVORITES

MOST LIKELY TO SUCCEED

Cathy Sparkman

MOST REPRESENTATIVE

Joyce McCullough

MOST BEAUTIFUL

Helen Ford

MOST POPULAR

Patricia Edwards



Susan Allen
Adrianna Anaya
Patti Ayers
Marie Esther Azuela
Mary Lou Bautista



Jo Ann Bezdak
Rita Blumberg
Alice Backholt
Mary Alice Bollom
Joyce Brown



Mary Helen Bruce
Greer Burriss
Carol Cappetta
Esther Carranco
Dorothy Carter



Sandra Carter
Kathy Chapman
Sylvia Cisneros
Carol Jo Clark
Carolyn Clark



Dolores Enriquez
Patricia Espey
Angela Fernandez
Maria Fernandez
Barbara Finnegan



Jane Fitzgerald
Mary Pat Fitzgerald
Janie Flores
Helen Ford
Ana Marie Garcia



Patricia Garnett
Mary Jo Glomb
Mary Ann Goates
Beatrice Godoy
Anne Goetsch



Patricia Gomez
Anne Gonzalez
Gracie Gonzalez
Leonora Gonzalez
Luellen Sue Goss

Carol Cleveland
Peggy Cochran
Kay Connor
Veronica De La Rosa
Mary Ann De Leon



Rosa De Luna
Deborah Dembski
Edwina Dement
Loretta Diaz
Sylvia Doering



Patricia Eaker
Joleen Edgerton
Patricia Edwards



Marsha Gregg
Elizabeth Grossman
Patricia Gudka
Dora Guerra
Irene Gutierrez



Carmen Guzman
Drucilla Haein
Davileen Hall
Patricia Hanshaw
Sophie Hartofilax



Cheryl Havelka
Jill Hayes
Charlotte Hentges
Dorothy Hetherington
Gladys Hinojosa





Laura Lea Hooker
 Vicki Jaricho
 Trinidad Jiminez
 Martha Johnson
 Elizabeth Jones



Frances Jost
 Margaret Mary Kelly
 Ann Kirby
 Mahdalen Leal
 Minerva Leal



Barbara Liderle
 Jonelle LeMaire
 Barbara Majek
 Elaine Mallard
 Linda Matelske



Susan Mayfield
 Joyce McCullough
 Carolyn McGuire
 Jean McLaughlin
 Linda McNabb



Sandra Rhodes
 Beth Riemer
 Karen Lee Russell
 Bertha Saenz
 Diane Schonefeld



Bernadette Schultz
 Betty Schultz
 Mary Ann Schultz
 Judy Shearer
 Julie Shuler



Ricke Shultz
 Judy Sierra
 Elaine Slack
 Rosie Solis
 Virginia Sosa



Cathy Sparkman
 Patricia Startz
 Janis Stegg
 Marie Stillman
 Dorothy Tepera

Betty Sue Metz
 Susan Milloy
 Mary Beth Mireau
 Marcia Moran
 Diane Moss



Carmen Thibodeau
 Susan Thomas
 Mary Tolin
 Janice Touchstone
 Helen Tudyk



Karen Moss
 Rose Marie Munoz
 Mary Jo Palacios
 Barbara Palousek
 Linda Ann Papageorge



Nancy Turpin
 Eleanor Uehlinger
 Mary Jane Victor
 Susan Veit
 Joyce Waida



Earline Parker
 Amelia Peña
 Sandra Perez
 Alice Ramirez
 Kay Reeves



Judy Waldon
 Cecelia Ward
 Jane Ward
 Patsy Wharton
 Anna Marie Yaklin





O
U
R

O
R
G
A
N
I
Z
A
T
I
O
N
S

STUDENT COUNCIL . . .

The student Council was organized in 1951 and has done much to accomplish the goals for which it was founded: to develop leadership, responsibility, initiative and a spirit of cooperation. This is done by active participation in student and school affairs. Council projects for the year included the sponsoring of a Christmas formal, Future Freshman Day, and School Spirit Day. They also compiled student directories. Council members included 12 seniors, 12 juniors, 12 sophomores, 12 freshmen.

President Darlene Aniol
 Vice President Louise McMahon
 Secretary Gloria Sherek
 Treasurer Katherine Ahr
 Parliamentarian Kay Vreeland
 Historian Marcia Chamberlain
 Reporter Joan Franks
 All City Representatives Darlene Aniol,
 Louise McMahon,
 Kay Vreeland
 Joan Franks



BEAKER BREAKERS . . .

Incarnate Word Academy Science Club, is affiliated with the Science Clubs of America and the Texas Academy of Science. The club is a major function in the activities of I.W.A.

President Carol Leonard
 Vice President Pat Haven
 Secretary Diane Shackelford
 Treasurer Geraldine Hoelscher
 Parliamentarian Mary Nan Polasek
 Sponsor Sister Jeanne Francis



CIVICS CLUB . . .

President Marie Klein
 Vice President Carol Leonard
 Secretary Barbara Floyd
 Treasurer Donna Carlucci
 Parliamentarian George Trice
 Historian Jo Charles Brownlow
 Sponsor Sister Stanislaus

The Civics Club was organized in 1955 under the direction of Sister Stanislaus. Membership is open to all students in government classes. This year the club visited the State Capitol in Austin. During the tour of the Capitol the club met Governor Price Daniel and Senator Bruce Reagan. During the year the members of the club listened to different speakers. Among them were speakers on missiles, radar, narcotics, alcoholism, and traffic safety.



THE JUNIOR CONFRATERNITY OF CHRISTIAN DOCTRINE . . .

The purpose of the C.C.D. is to help the Church win souls for Christ. The active members are divided into three groups: Apostles, Teachers, and Helpers. The Teachers are the girls trained to teach religion in places where there is a shortage of nuns and priests and to the public school children who have no way to learn their religion. The Apostles take Catholic literature to the bus stations and hotels throughout the city. They also sponsor an Easter egg hunt for the children in Hudson Acres and Rolling Acres. They make a monthly visit to the Hearth to sing for the old people and bring them favors. The Helpers aid the Teachers and the Apostles by making holy cards, Easter baskets, and favors for them to use in their work. The Associate members aid Junior C.C.D. by their prayers.

The officers for this year were: Ofelia Garcia, President; Marcia Chamberlain, Vice-President; Gloria Sherek, Secretary; Katherine Ahr, Treasurer; Emily Vesely, Reporter; Chairman of the Helpers, Jeanette Stryk; Chairman of the Apostles, Phyllis Robinson; and Chairman of the Teachers, Diane Shackelford. Sponsors were: Sister Anne, Sister Agnes Marie, and Sister Luke.



Ofelia Garcia
President



SODALITY OF OUR LADY OF GRACE . . .



- Prefect Geraldine Petru
- Vice Prefect Barbara Mathieu
- Secretary Ofelia Garcia
- Treasurer Barbara Worrel
- Alternate Representative Mary Gansle
- Second Representative Elizabeth Sefcik

The Sodality is a religious organization which fosters in its members a filial love and devotion for our Blessed Mother for the purpose of self-sanctification and to enable the Sodalist to help save and sanctify their neighbors. Sodalists have two special means to enable them to attain their purpose: They must live the Sodality Way of life, Spiritually by observing the rules of the Sodality concerning their spiritual life and they practice the works of the apostolate according to their abilities and the wishes and needs of the Bishop. They visit the sick and distribute literature in the hospitals; they collect canceled stamps for the missions; they sold religious Christmas cards to encourage people to put Christ in Christmas.



LANGUAGE CLUBS . . .



SPANISH CLUB

- President Pat Hughes
- Vice President Jo Charles Brownlow
- Secretary Paddy Dunne
- Treasurer Geraldine Hoelscher
- Historian Jeannette Fogaley
- Parliamentarian Susanne Krause
- Sponsor Sister Mary George



LATIN CLUB: DAUGHTERS OF ROME

- President Geraldine Petru
- Vice President Cleary Johnstone
- Secretary Mary Alice Walsh
- Treasurer Mary Helen Kennedy
- Parliamentarian Celeste Neuman
- Reporter Frances Grossman
- Sponsor Sister Mary Luke



I. W. A. MOTHERS' CLUB

Mothers' Club members were kept busy throughout the school year making plans and sponsoring successful activities. The Mothers' Club is affiliated with the National Council of Catholic Women. Most of the profits from the various activities sponsored throughout the school year are used to purchase supplies and equipment for the school.

I.W.A. MOTHERS' CLUB
 MOTHER-DAUGHTER MASS AND BREAKFAST
 SUNDAY MAY 3, 1959 8:00 AM
 I.W.A. CHAPEL AND CAFETERIA
 60¢ PER PLATE

President Mrs. P. J. Robinson
 Vice President . . . Mrs. Beverly Estes
 Secretary Mrs. E. R. Walker
 Treasurer . . . Mrs. George McMahon
 Parliamentarian . . Mrs. Walter Franks

Treasurer Mrs. McMahon, President Mrs. Robinson, Secretary Mrs. Walker chat in the parlor after a meeting of the Mothers' Club.



I. W. A. ALUMNAE ASSOCIATION . . .

The Incarnate Word Academy Alumnae Association has an active membership of about 250 graduates and ex-students, representing classes from many of the 86 years I.W.A. has been in existence. To further the purpose of perpetuating old friendships and forming new ones, the Alumnae has a monthly meeting, most of which are social in nature.



TEXAS CHAPTER
 INTERNATIONAL FEDERATION OF CATHOLIC ALUMNAE
 SISTER JEANNE FRANCIS
TRUSTEE
 INCARNATE WORD ACADEMY
 CORPUS CHRISTI
 FEDERATION SISTER

THIRTY-FIFTH ANNUAL CONVENTION
 FORT WORTH • NOV. 7-8-9, 1958

President Mrs. Ronald M. Baughman
 Vice President . . . Mrs. Howard Fish
 Corresponding Secretary . Miss Christine Ragland
 Recording Secretary . . . Mrs. William Green
 Treasurer Mrs. Grace Campbell

Mrs. Baughman, right, confers with the General Chairman of the Annual Ham Dinner, Mrs. Roy Rodriguez, and one of her assistants, Mrs. Jack Grant.





O
U
R

C
A
L
E
N
D
A
R



The Grotto, recently completed on the southwest side of the campus, was dedicated on September 8th and Mass of the Holy Ghost celebrated in the Chapel, officially opening the school year.

SEPTEMBER



Mrs. Robert Daugherty, Class of 1938, compared rings with Karon Walker, Class of 1959.

Senior Rings, blessed after Mass in Chapel, confer upon the seniors the true dignity of their estate. Freshman Class members are "initiated" on the afternoon of this day. Seniors treat the freshmen to a party afterwards. The big day this year was September 21, 1959.



Freshman perform "tricks" to please senior sponsors.



Freshmen lined up for inspection by their "big sisters," the seniors.



ANNUAL CHICKEN BARBECUE

SUNDAY, SEPTEMBER 28, 1958
11:30 a.m. to 2:30 p.m.

AT INCARNATE WORD ACADEMY
Benefit of Incarnate Word Academy

Plates \$1.00

No 2106

The Annual Chicken Barbecue was served on the I.W.A. campus in September this year. Traditionally, the weather wasn't too good, but patrons, students and parents turned out in crowds.

With school underway, parties begin also. Juniors gave a dance in the school cafeteria. Dancing to strains of music provided by D.J. Jeff Cohane are Betty Sue Metz, Susan Allen, Mary Jane Blaschke, and Mary Ann Herndon.



Early in October the first issue of THE CROWN of 1958-59 came out. Mrs. Robert Daugherty, journalism teacher and faculty advisor, gave Mr. Morgan, Bay Publishing Company owner who prints the paper, pointers on CROWN style for the year. Journalism students prepare copy for the paper as part of their classwork. Class and club reporters are responsible for news from the organizations they represent.

OCTOBER

The Crown
 Incarnate Word Academy · Corpus Christi, Texas



Rehearsals were well underway in October for the annual Play Festival held each fall in San Antonio. Pat Murray and Mary Ann Herndon try out for parts in "The Flying Grandmother." Presenting I.W.A.'s part in the Festival is an annual project of the speech class, directed by Mrs. Daugherty.

Madeline Meehan, left and Karon Walker, right, Tried their skill on the skating rink as CROWN and AURORA ad salesman are treated to a party.



NOVEMBER



Mrs. Daugherty, attired in a Lichtenstein's creation, was one of the models in the Freshman-sponsored Style Show.

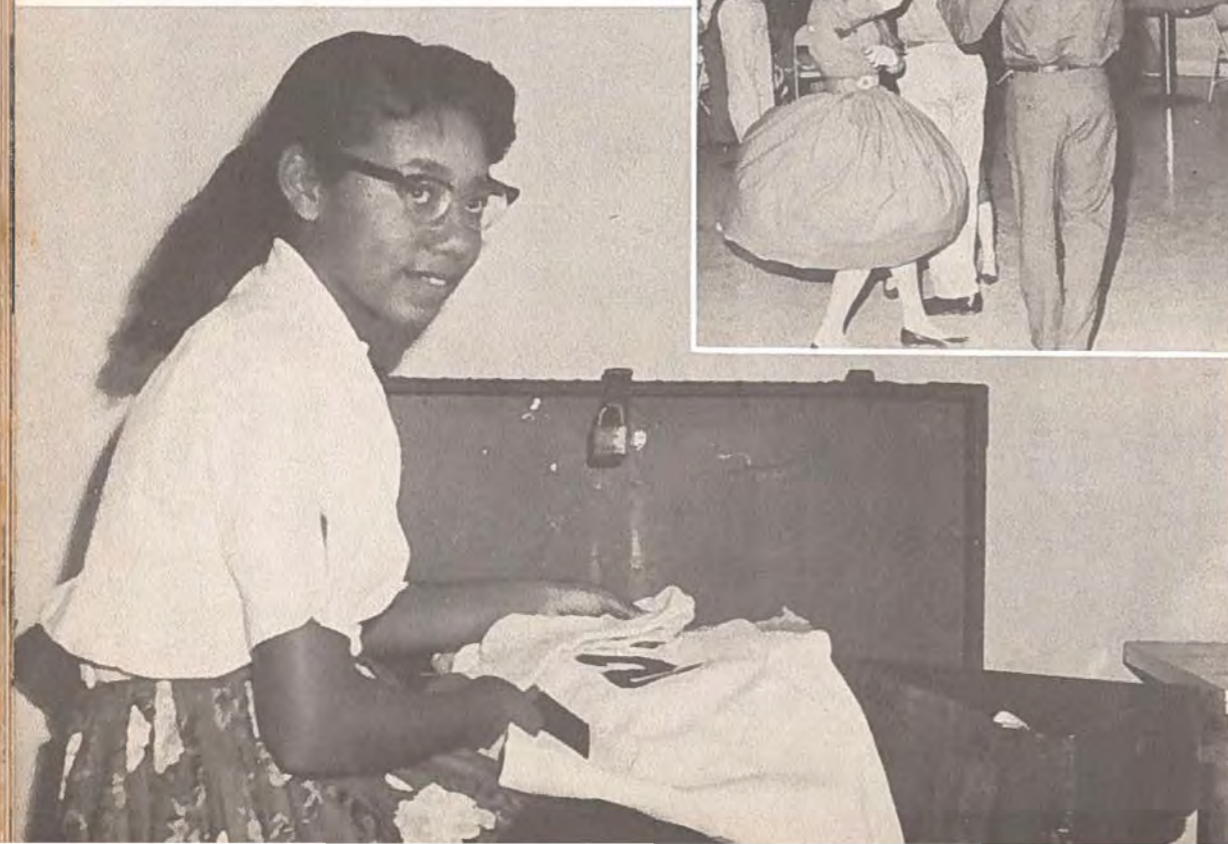


On the 7th of November I.W.A. students gathered with other Catholic high school drama class students to participate in a Play Festival, sponsored annually by Incarnate Word Academy. Betty Floyd, Pat Murray, Celeste Neuman, and Patti Ayers played in "The Flying Grandmother."

Pat Haven, newly elected Captain of the basketball Angels for 1959, gave out uniforms to prospective team members.



Homemaking students prepared, served, and partook of the dainties of a Thanksgiving Buffet.



Nancy Knox and Helen Havelka were among the many at a Sophomore Class dance.

Mary Gansle, Geraldine Hoelscher, Betty Floyd, Genevieve Wahl, Gerri Johnson, Bernadine Benys, Carol Ann McGill, Anna Maria Gonzalez, and Judy Allis serve themselves.



DECEMBER

The Spirit of Christmas pervaded I.W.A. in December. The Glee Club and band students went around singing at various hospitals, entertaining the aged and ill, bringing some of the essence of the season to all whom they visited.

Betty Jane Koller, glee club member, typifies the happy season.



*Admit one couple
to the
Incarnate Word Academy
Student Council Formal Dance*

*December 26, 1958
8 'til 12 p.m.*

*Exposition Hall
Music by Frank Strub*



Youth of the city sponsored a special Mass at the Coliseum in honor of Our Lady of Guadalupe. All Catholic schools in the area attended en masse.

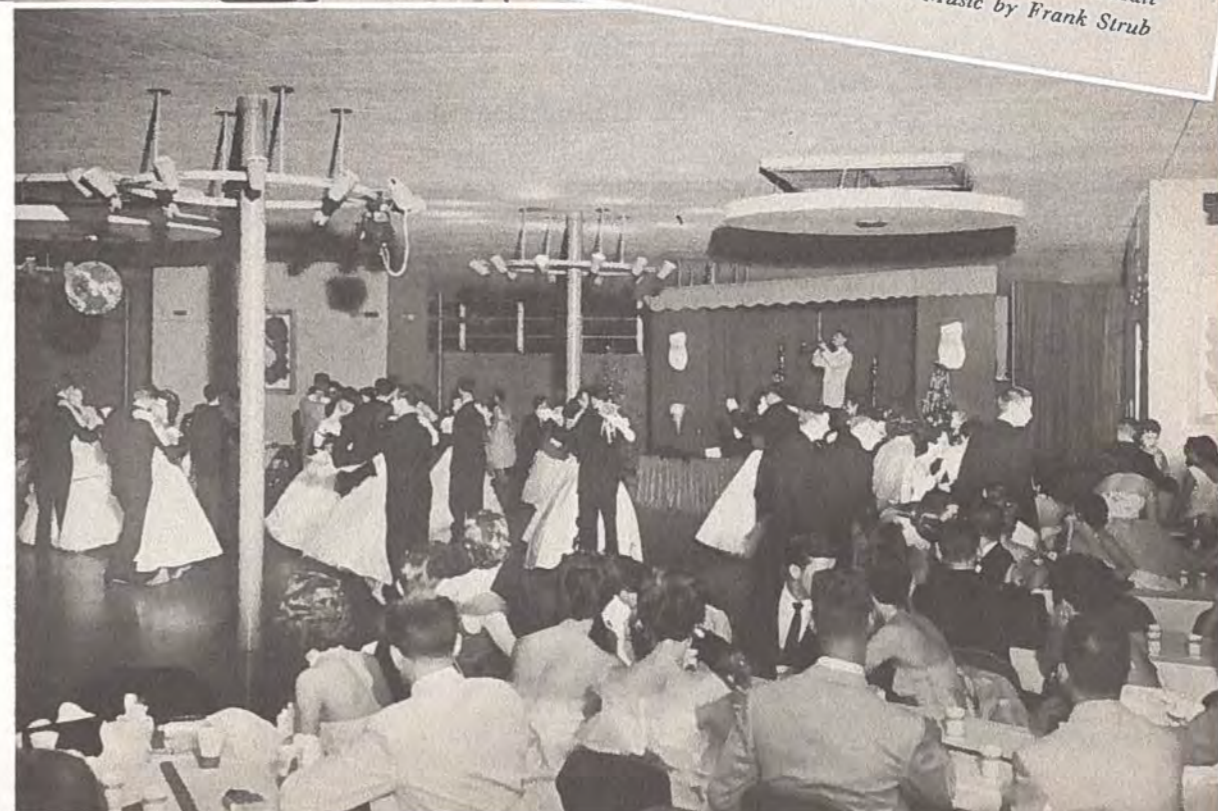


The Glee Club sang at the annual Living Christmas Tree, set up on the grounds of the Bishop's residence.

I.W.A. Spanish Club assisted with the annual Mexican Supper.

MEXICAN SUPPER INCARNATE WORD ACADEMY
 FRIDAY, DECEMBER 5, 1958 5:00 TO 8:00 P.M.
 PLATES — CHILDREN 50c ENTERTAINMENT
 DOOR PRIZES
 No. 5801
 Printing of tickets compliments of Joe W. Johnson

I.W.A. Student Council sponsored their annual Christmas Formal, with a large group of teen-agers attending.





DARLENE ANIOL was chosen All-School Favorite by the student body of Incarnate Word Academy.



Alumnae members Frances Grant and Laura Rodriguez, general chairman of the annual Ham Dinner, confer with president Margaret Baughman, on details for the affair.

HAM DINNER
 INCARNATE WORD ACADEMY CAFETERIA
 Sunday, January 26 — From 11 A.M. to 2 P.M.
 Plates \$1.00
 Sponsored by
IWA ALUMNAE ASSOCIATION
 Benefit: Curriculum Library for New School
 Dinners to Go: 25c Extra, Payable at Door

JANUARY

Students paused in their classwork after the end of the first semester to spend two days in Retreat. Juniors and Seniors spent January 19th and 20th in Retreat, while Freshmen and Sophomores had the following two days. Father Peter Rogers, O.M.I., editor of MARY IMMACULATE magazine, was Retreatmaster.



FEBRUARY



The Glee Club left early on the 14th to attend the Music Festival in San Antonio.

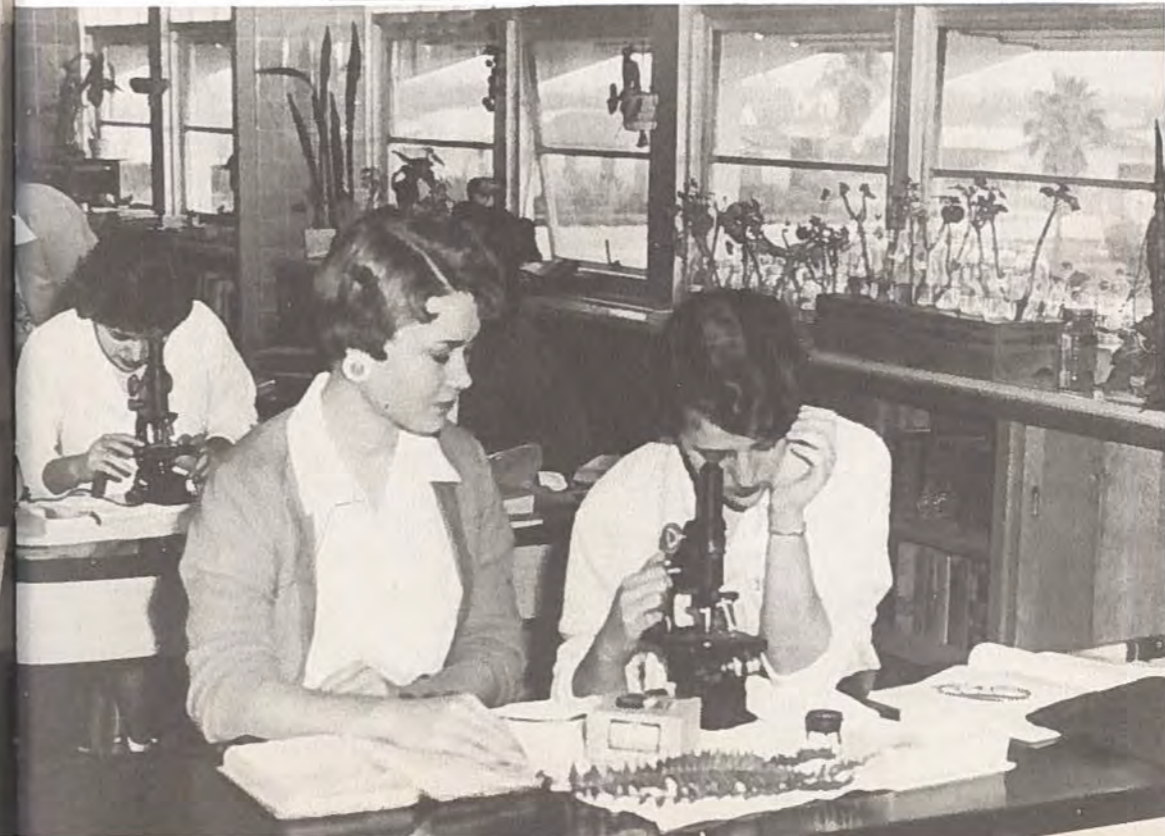


At the CGAA tournament in Bellaire, the ANGELS lost out in the semi-finals to the team who went on to championship. ANGELS later had the honor to receive letters from George DeWitt and appear on a nation-wide TV show. Pat Haven and Emily Vesely received Honorable Mention for excellent play.



As the second semester rolled around there was a general air of "Starting over!" In general science, Betty Sue Metz, Zanda Taylor, Drucilla Haein, Earline Parker, Cheryl Havelka, and Gladys Hinojosa get down to business.

Sister Mary George, principal, was notified that I.W.A. was accepted as a member of the Southern Association of Colleges and Secondary Schools



Many of the biology students, like Mary Jane Blaschke and Lillian Anderson, spent a lot of time preparing projects for the Regional Science Fair.



Junior Confraternity of Christian Doctrine Helpers made Easter Baskets to use for Easter Egg Hunt parties given for the Catechism Classes taught by the C.C.D. Teachers. Karen Sue Buck and Day Lee Snell admired the finished products.



The Serra Club annually entertains the Junior Class with a luncheon. Carolyn Daily, Karyn Farrow, Bernice Netek, Patricia O'Docharty, and Connie Nickens enjoyed this one.



George DeWitt, of TV fame brought publicity to I.W.A. when he came down with NAME THAT TUNE's co-producer Al Singer to make movies at I.W.A. and to interview the principal, Sister Mary George, and the Superioress, Mother Mary Patricia, about their entries. Proxies won the contest for them. Money was earmarked for THE gymnasium, sorely needed item at I.W.A.

MARCH



I.W.A. was well represented at the Fourth Annual South Texas Science Fair, winning 2 blue ribbons (Kay Vreeland, Carol Leonard) 6 red ribbons (Karon Walker, Pat Falcon, Geraldine Petru, Patricia O'Docherty, Kathryn Drozd-Frances Case, Lillian Anderson-Mary Jane Blaschke) and one white ribbon (Barbara Worrel) with Kay Vreeland being Grand Prize winner in the girls' division, going on to National Science Fair.



Kay Vreeland's exhibit

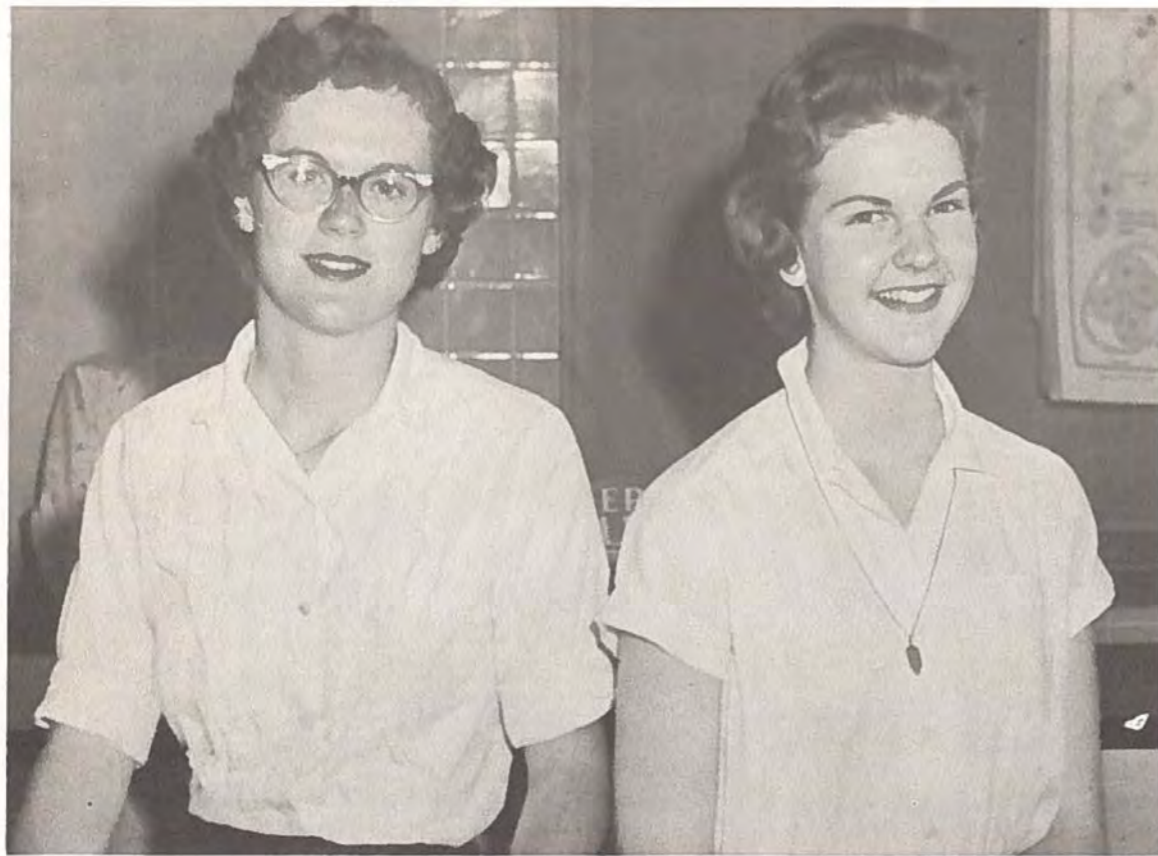


by Kathryn Drozd-Frances Case

March was a month of winning for I.W.A. In competition with other high schools, she won the South Texas Science Fair (Kay Vreeland), the Chamber of Commerce—sponsored "My True Security" contest (Lynn Moore) and the essay contest sponsored by the Nueces County Medical Society (Mary Jo Wagner).

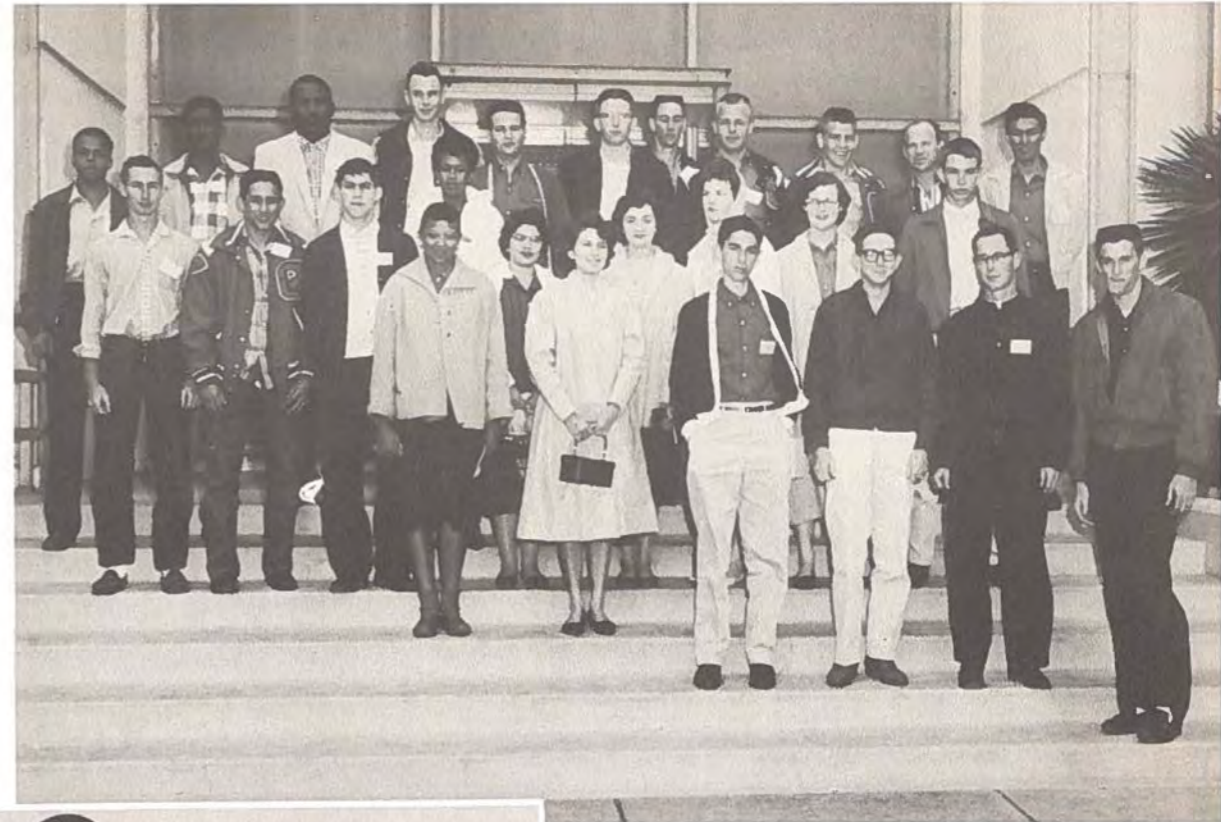
by Pat Falcon





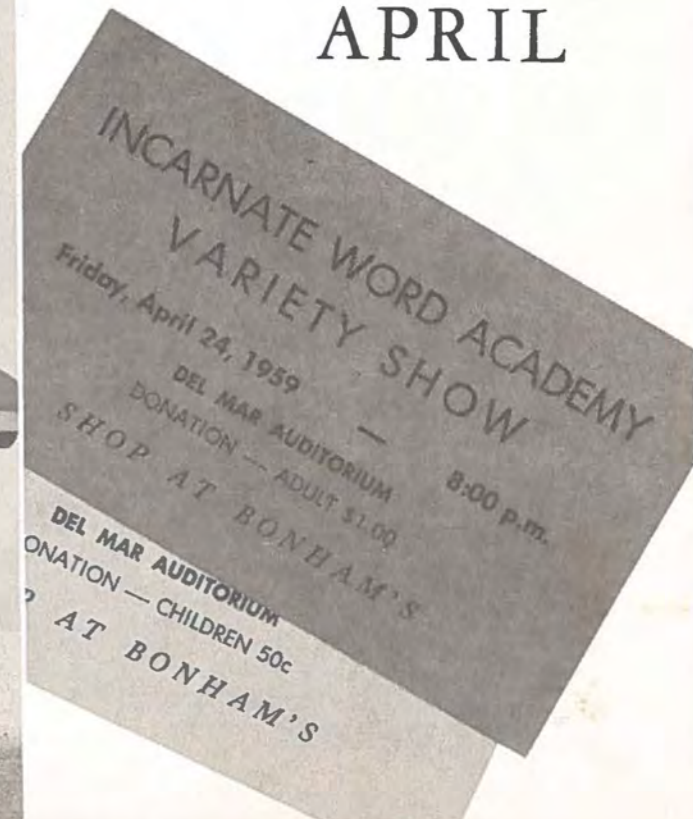
Karon Walker and Kay Vreeland were announced as Salutatorian and Valedictorian respectively, having maintained the highest averages for four years of high school.

Five I.W.A. Chemistry students made the trip thru Reynolds plant with other local students. Pat Falcon, Mary Lucille Huegele, Carol Leonard, Kay Vreeland, and Karon Walker went.



Karyn Farrow, I.W.A. junior, typified the gaiety of the Variety Show. All the schools taught by the Sisters participated in the show.

APRIL

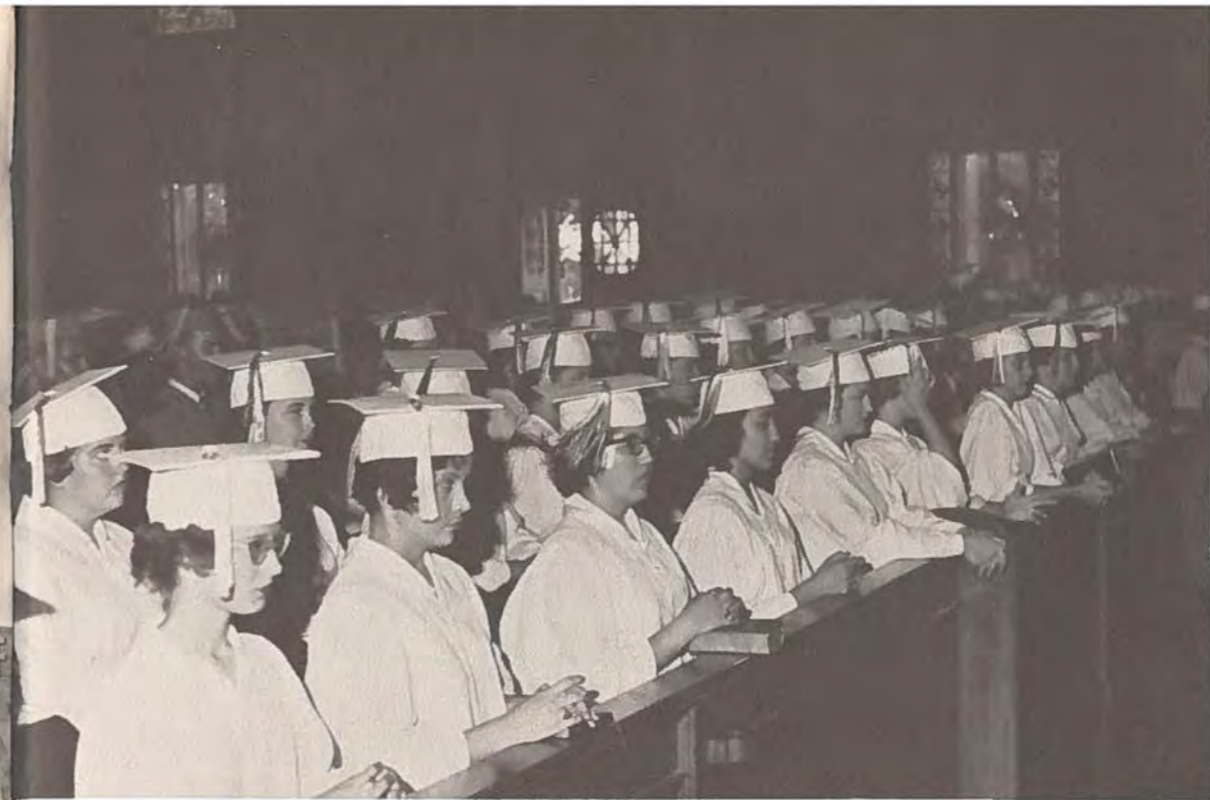


The advent of spring drove the student body outside to hear election speakers advocate their choices for 1960 student council president.





Biology classes, as all others, spent much time finishing semester assignments and preparing for final examinations.



Seniors of I.W.A. were joined by relatives and friends at Baccalaureate Exercises in the Corpus Christi Cathedral at 6 p.m., May 17, 1959.



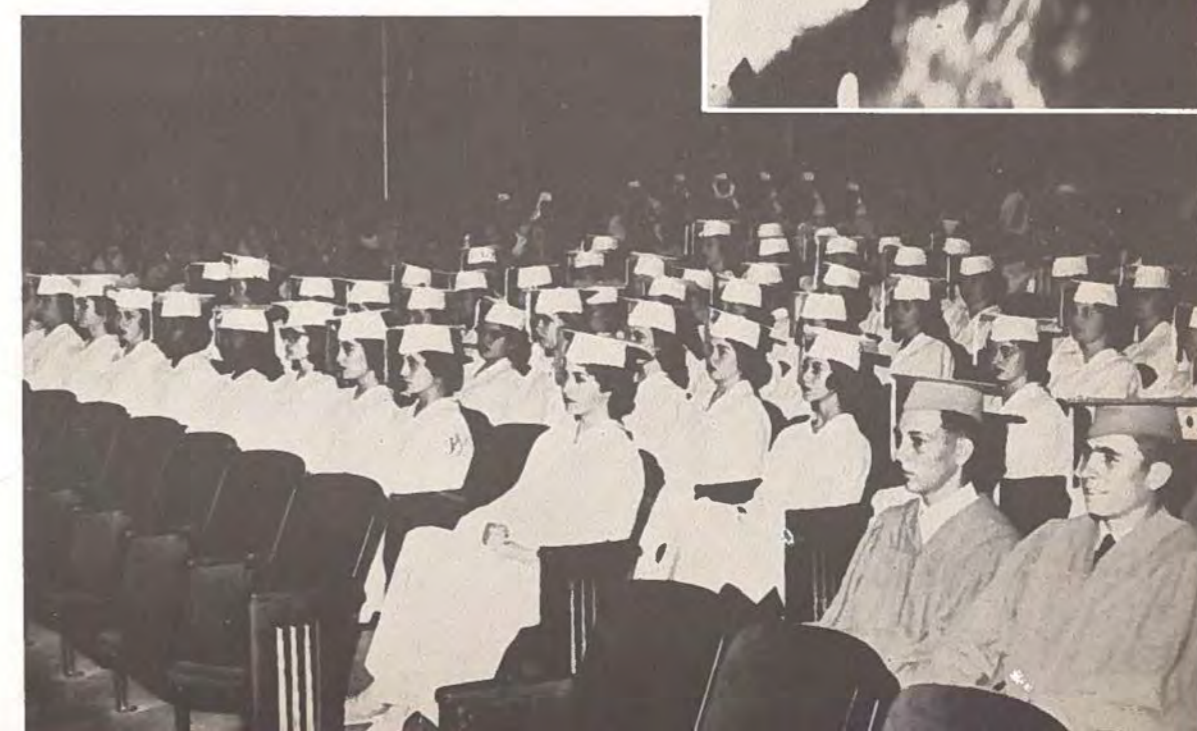
Kay Vreeland, the first local winner of the Regional Science Fair, placed Fourth in the National Fair in Hartford, Connecticut, despite the loss en route of part of her exhibit.

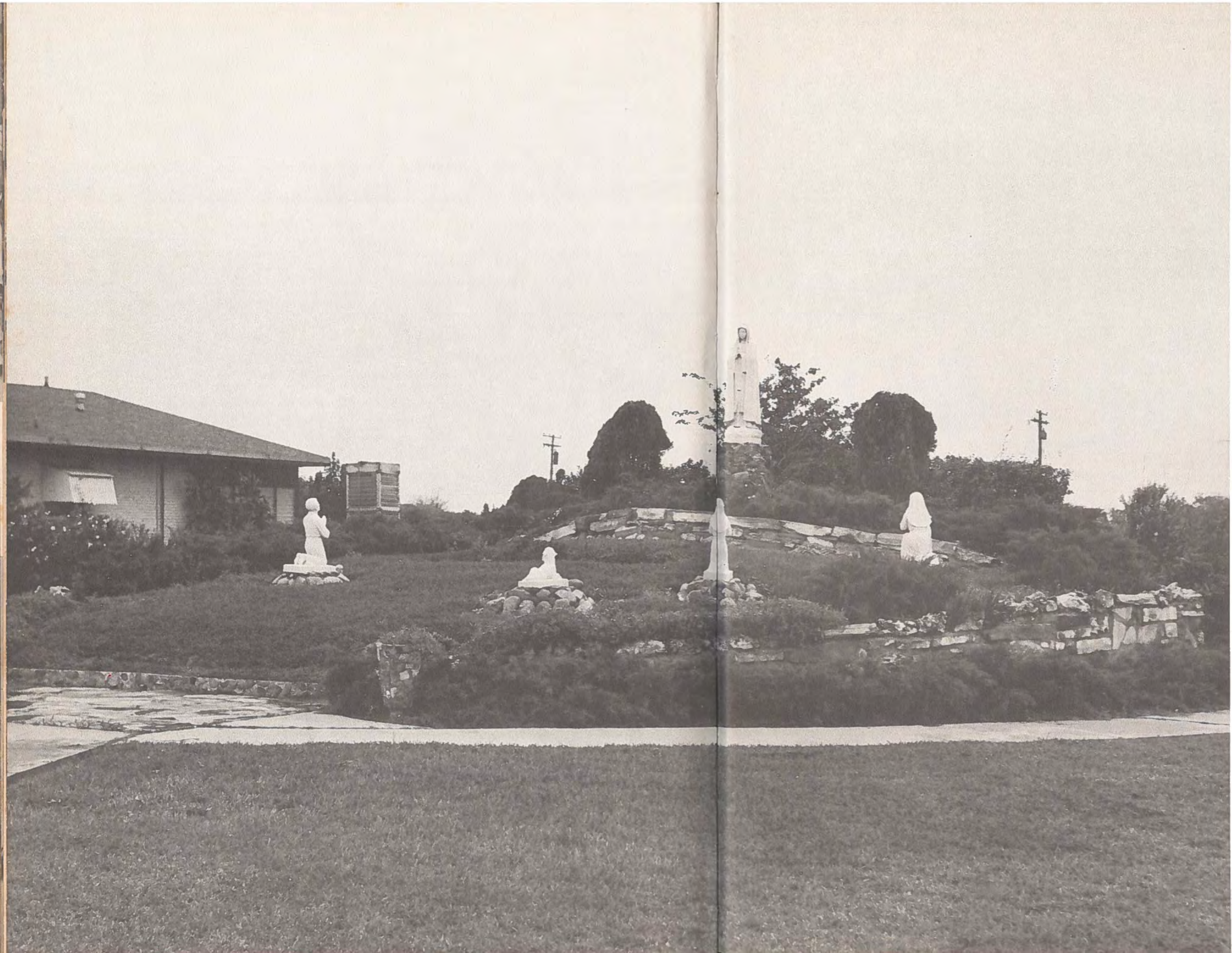


Pat Falcon and Carol Leonard won first place in the 8th Annual Future scientists of America Foundation contest. They received gold pins and \$75.00 in bonds. Five others rated "Honorable Mention."

MAY

Kay Vreeland, valedictorian, spoke on "Looking Ahead," during the graduation exercises at Del Mar College auditorium, Thursday, May 21, 1959, at 8 p.m. His Excellency, Bishop Adolph Marx, Titular Bishop of Citrus, and Auxiliary Bishop of Corpus Christi, awarded the diplomas.





O
U
R

P
A
T
R
O
N
S

PORT PRINTING COMPANY

PRODUCERS OF PRIZE-WINNING YEARBOOKS



Letterheads — Statements — Envelopes

Brochures — Catalogs



Phone TU 4-9369

1602 South Alameda

Compliments

of

OTTO FRANZ CO.



MOTOR CRANE RENTAL



Corpus Christi, Texas



Compliments

of

MR. & MRS. BEN G. BENYS

and

BERNADINE



SID MURRAY



"PAYS IN A HURRY"



Phone TU 2-5417

1733 Brownlee

CORPUS CHRISTI, TEXAS

PHONE TU 2-1353

AT SIX POINTS



OPTICAL LABORATORIES

OPTICIANS



GENE DAUGHERTY



Medical Dental Bldg.
Corpus Christi, Texas

Compliments of . . .

RAGLAND'S



Featuring the Finest . . .

IN APPAREL FOR THE ENTIRE FAMILY

WHOLESALE - RETAIL

•
SEALE TIRE CO., INC.

TIRE — OIL

•
RECAPPING and VULCANIZING
BATTERIES

KENDALL OILS - GREASES

•
TELEPHONE TU 2-2502

2417 LEOPARD STREET

Box 1436

Corpus Christi

DOYLE'S
"Dated Drugs"



PRESCRIPTION PHARMACIES



700 Ayers at Santa Fe

TU 4-6337

Corpus Christi, Texas

CHILDER'S
WHOLESALE
COMPANY

•
NIFTY SCHOOL SUPPLIES

•
CANDY — CIGARS — CIGARETTES
CHEWING GUM — MATCHES

Business Phone: TU 4-7702

Resident Phone: TE 5-6621

•
MATHIEU ELECTRIC COMPANY

— ELECTRIC CONSTRUCTION —

•
C. M. MATHIEU

423 South Alameda

•
Corpus Christi, Texas

TAYLOR BROTHERS

Jeweler



STARR and MESQUITE STREET

Congratulations

From . . .

BOTICA GARCIA NO. 1

3022 MORGAN AVENUE

☆
— FREE FAST DELIVERY —

☆
American G. I. Forum Headquarters

☆
PHONE TU 4-7042

DURHAM BUSINESS COLLEGE

CORPUS CHRISTI'S OLDEST
and
MOST MODERN BUSINESS COLLEGE

★

COMPLETE SECRETARIAL COURSES
BUSINESS MACHINES
CHARM & POISE
ACCOUNTING
SHORTHAND
DRAFTING
SPELLING
ENGLISH

★

TU 2-4165

220 LAGUNA

ACME RADIO & TV

RCA
PACKARD-BELL
SALES and SERVICE

M. PAUL WOLF, Owner

3305 Agnes

TU 3-2232

Member TEA of Corpus Christi

DAN KORNEGAY HUMBLE SERVICE STATION

Corner of Baldwin & Ayers

●
WHEEL BALANCING
ROAD SERVICE
LUBRICATION
POLISHING
BATTERIES
WAXING
TIRES
WASH
GAS

Compliments
of

ROBSTOWN
NATIONAL
BANK

ROBSTOWN, TEXAS

Compliments
of . . .

HERBERT J. HAELSCHER
ELECTRIC CO.

Highway 44 Phone 2304
ROBSTOWN, TEXAS

CORPUS CHRISTI COLLEGE OF BUSINESS, INC.

"Corpus Christi's Newest and Most Modern"

★

Specializing in . . .

SMALL INDIVIDUAL GROUPS

★

For Information
Write — Visit — or Phone

419 Laguna at Mesquite
(Above Pacific Finance)

P. O. Box 252

TU 3-7469

FINER FOODS

at . . .

FEUDO'S



4741 Kostoryz Road

CONGRATULATIONS

to the

GRADUATING CLASS OF 1959

From . . .

**A
FRIEND**



Three Stores to Serve You

UPTOWN—701 Leopard

DOWNTOWN—401 N. Chaparral

PARKDALE PLAZA

Compliments

of . . .

**SCHAFFERS
MODERN PHARMACY**

1002 Santa Fe

TU 4-6641



“YOUR
NEIGHBORHOOD
DRUGGIST”

Compliments

of

F. W. WOOLWORTH CO.

COMPLIMENTS

OF . . .

PLEMONS FOODS



3182 Lawrence Drive

831 Airline Road

4744 Ayers Street

STEEL

OF ALL

KINDS



GULF IRON WORKS



SWANTNER and GORDON

INSURANCE COUNSELORS

Compliments
of ...

THE F. B. GOODRICH STORE

1221 Leopard Street TU 4-8841
Corpus Christi, Texas

2 SMART STORES
TO SERVE YOU—

DOWNTOWN STORE
FOR MEN AND YOUNG MEN

PARKDALE STORE
FOR MEN AND BOYS

two smart stores

downtown
nueces hotel



parkdale
plaza # 25

for famous brands

Compliments

of

DR. H. L. BROWNLOW AND FAMILY

Compliments

of

SAFETY GLASS COMPANY

Congratulations to the graduating class of 1959 . . .
and the best wishes for many years to follow.



CONGRATULATIONS

and

BEST WISHES

LAYTON OPTICAL COMPANY

GONZALEZ PETROLEUM COMPANY

WASHING — GREASING
GAS — OIL — KEROSENE



ALONZO M. GONZALES, Manager



501 North Staples Street
Dial TU 2-0532
CORPUS CHRISTI, TEXAS



THE BEST DINNERS START WITH FOODS FROM . . .



- CORPUS CHRISTI
- KINGSVILLE
- BEEVILLE
- BISHOP

SCOTT ELECTRIC CO.

Maintenance and Construction

•

INDUSTRIAL
COMMERCIAL
RESIDENTIAL
INTERCOM SYSTEM

•

1919 N. Port Ave. TU 4-6326
Corpus Christi, Texas

SHAW MACHINE & TOOL COMPANY, INC.

GENERAL MACHINE WORK

★

ELECTRIC and ACETYLENE WELDING
PORTABLE WELDING EQUIPMENT

★

314 McBride TU 2-8894
Corpus Christi, Texas

It's Smart to Dine
at the New . . .

A. E. PEÑA'S



Corpus Christi's Favorite
MEXICAN FOODS RESTAURANT

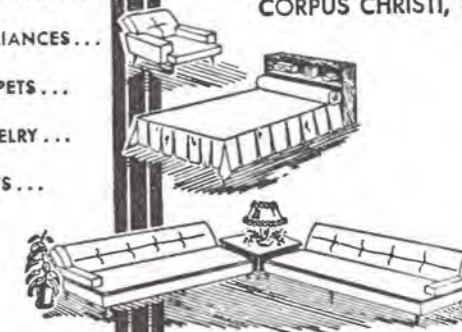
No. 1—715 Nineteenth Street
TU 3-7041

No. 2—1221 So. Staples Street
TU 2-0825



1001 LEOPARD STREET
CORPUS CHRISTI, TEXAS

FURNITURE . . .
APPLIANCES . . .
CARPETS . . .
JEWELRY . . .
GIFTS . . .



"Home of Famous Brands"
Where the best costs no more!

Compliments
of

NIXON COFFEE SHOP

Wilson Building

☆

24-HOUR SERVICE

☆

GOVATOS BROTHERS

J. NICHOLS

Compliments
of . . .

PRESCOTT PHARMACY

4406 Prescott Phone UL 2-1461
Corpus Christi, Texas

•

CLEMENTE GARCIA, JR.

•

"WHERE PHARMACY IS A PROFESSION"

Compliments

of . . .

JUNIOR "A"

Incarnate Word Academy

CORPUS CHRISTI, TEXAS

LEWIS BOGGUS MOTORS

Your

FORD

Dealer

in

Corpus Christi, Texas

CARPENTER BROS.

Well Service & Swabbing

1733 South Brownlee

Phone UL 2-4044

W. L. CARPENTER, JR.

W. A. CARPENTER, JR.

**ALLIED PLUMBING SUPPLY
CO., INC.**

2556 Agnes Street

PHONE TU 3-4310

Corpus Christi, Texas



Moore Bros. Beverage Company, Inc.
1125 N. TANCAHUA STREET • CORPUS CHRISTI, TEXAS



WITH COMPLIMENTS

OF YOUR FRIENDLY

**GOODYEAR SERVICE
STORE**

APPLIANCES — TIRES — BATTERIES

121 North Chaparral Street

H. C. MEURER, Manager

Compliments

of . . .

CRAINE FURNITURE CO.

305 S. Chaparral

1002 Leopard Street

Warehouse Show Room—AA34 Lexington

LUCKY STAR
SCHOOL SUPPLIES



**SOUTH TEXAS
WHOLESALE CO.**



Formerly

SOUTH TEXAS CANDY CO.

JOHN L. TOMPKINS & CO.

REALTORS — DEVELOPERS



509 North Water Street

Phone TU 3-9309

**Corpus Christi
THEATRES
Inc.**

CENTRE — RITZ — TOWER — AYERS
AMUSU — GRANDE — MELBA — PORT
OSAGE AND GULF DRIVE-IN THEATRES

IT'S MOVIE TIME



Compliments

of

**COLUMBIA-SOUTHERN
CHEMICAL CORPORATION**



2222 Laredo Street

Corpus Christi, Texas

LEE H. SCOTT



SCOTT LABORATORIES
MANUFACTURING CHEMISTS

COMPLIMENTS
OF

**VERNON'S CARSIDE
SERVICE**

BUFORD AND THIRD



GROCERIES — MEATS — VEGETABLES
and
FROZEN FOODS



Open 7:30 a.m. to 10:00 p.m.



— COURTEOUS SERVICE ALWAYS —

CONGRATULATIONS

and

BEST OF LUCK

to the

GRADUATING CLASS OF 1959

From . . .

TELLERS

"Your Comfort Is Our Pleasure"

MOTEL

PH. TU 4-0043

4520 Avenue C

J. B. SEFCIK, Owner



AMERICAN BOTTLING COMPANY



There Are 11 H.E.B. Food Stores in Corpus Christi
Conveniently Located to Serve You:

Kostoryz and Gollihar Road
Hwy. 9 and Villa Drive
2300 Leopard
822 Leopard
1403 Third

Agnes and Nineteenth Street
3133 South Alameda
2818 N. Water
3102 Baldwin
3001 Ayers

Parkdale Plaza

Compliments
of . . .

CORPUS CHRISTI CHURCH GOODS

136 Mesquite Street

Congratulations

Graduates



 **CENTRAL POWER AND LIGHT COMPANY**

Air-Conditioned

TE 5-6422

GULF SKATING RINK

3215 LEXINGTON BLVD.

Skating Every Night Except Sunday and Monday 7:30 to 10 p.m.

— Private Parties Solicited —

only gas does so many things . . . best!

- ★ Cooking
- ★ Refrigeration
- ★ House Heating
- ★ Air Conditioning
- ★ Water Heating
- ★ Clothes Drying
- ★ Incineration



HOUSTON *Natural Gas* **SYSTEM**



Annual News
a good report
from TER-MOG-SI!

Dudley T. Harris & Co.

603 Jones Bldg. . . . Corpus Christi, Texas



Compliments
of a
Friend

ALLEN'S

in Corpus Christi and
Kingsville, have been furnishing
South Texas homes for over 51 years.
Now, we're serving the grandchildren
of our first Customer's!!!!

3433 Ayers

Building homes
for
Growing America . . .

jon held

Corpus Christi
Tropic Isles

Kingsville
Santa Gertrudis Estates
Town 'N Country

Compliments

of . . .

STEVENSON'S
Advance Beauty College

Corpus Christi, Texas

Compliments
of

CATHOLIC CHAPEL

NAVAL AIR STATION

Corpus Christi, Texas

REV. W. J. KOKOSZKA

REV. E. A. SLATTERY

REV. D. CRONIN

Compliments

of

Corpus Christi
Janitor Supply Co.

122 North Staples

PHONE TU 4-4947

SOUTH TEXAS LEADING JEWELERS

Buy
with
Confidence



4 Great Stores to Serve You.

1014 Leopard
Corpus Christi

Laredo

301 N. Chaprral
Corpus Christi

Victoria

Compliments

of

FAUSTO'S
Upholstery Shop

PATRONS ADS

Bill's Shoes Box
Buccaneer Potato Chips
Cabiness Auto Salvage
Cage's Hardware
Carl's Flowers
Frank Davis Auto Parts
Frank Strub Palladium
Fritz Herr
Garza Oil Company
Hunt Tire Service
Miller's Grill
Royal Cleaners
Sam Kane Wholesale Meats
Six Points Auto Supply
Village Beauty Salon
Vrba's Garage
Mr. and Mrs. John Mendleski
Dr. and Mrs. Svajda
Cdr. and Mrs. E. J. Worrel