



# Program Information & Admissions Procedure

**Open House – November 9th at 6:00pm**

Learn about our program, meet students and teachers and get your questions answered!  
For more information about event format go to our website [www.killinglyschools.org/aged](http://www.killinglyschools.org/aged)

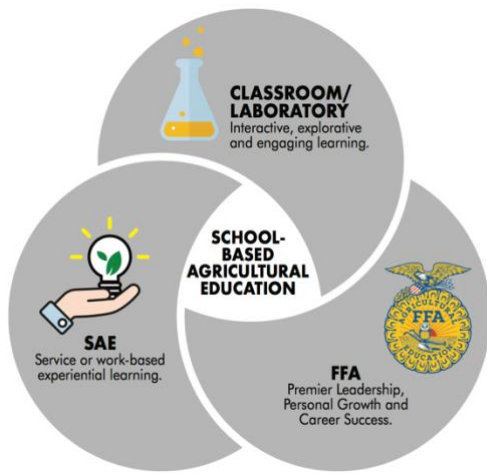


**Killingly Regional Agricultural Education Center  
Killingly High School  
226 Putnam Pike Dayville, CT 06241  
Phone: (860)779-6675  
<http://www.killinglyschools.org/aged>**

### **Killingly High School Mission Statement**

*The Killingly High School community promotes responsibility, excellence and dedication to life-long learning in a safe environment. Our student-focused approach provides relevant and challenging learning opportunities that address individual needs and foster talents. Students will demonstrate intellectual growth and academic excellence. We guide our students to become critical thinkers who are contributing, respectful citizens within a diverse world.*

## KILLINGLY AGRICULTURAL EDUCATION: THE THREE-COMPONENT MODEL



### CLASSROOM/LABORATORY

Agriculture Students in their 1<sup>st</sup> year take a 1 credit exploratory course that teaches foundational concepts in all areas of agriculture. In their second year, students select two major areas of study and take 2 one credit courses (one each semester). In the 3<sup>rd</sup> and 4<sup>th</sup> year students take a specialized full year 1.5 credit course. See our website for course descriptions.

All agriculture course curriculum is written for the college prep level. The majority of our program graduates pursue post-secondary education and students can earn up to 15 college credits while still in High School.

### FFA: STUDENT LEADERSHIP

FFA is a student leadership organization for students taking Agricultural Education courses. It is an integral part of the Agricultural Education program and all students are members. This organization strives to build the character, leadership, and citizenship of its members through many activities structured on the local, district, state, regional, and national level.

FFA activities and award programs complement instruction in agriculture/agribusiness by giving students practical experience in the skills and knowledge gained in their class. A major emphasis of the FFA is the development of leadership skills to prepare young people for leadership roles in their future careers. There are over 700,000 FFA members nationwide.

Our Killingly FFA Chapter is led by an officer team of junior and senior Ag students who are elected by their peers. With the support of chapter members, these students develop, plan and execute a variety of activities throughout the year including recreation activities for members, service to our community, agriculture advocacy, leadership development and many others. For more information, see our web page at [www.killinglyschools.org/aged](http://www.killinglyschools.org/aged) or the National FFA Organization's website at [www.ffa.org](http://www.ffa.org).

### SUPERVISED AGRICULTURE EXPERIENCE (SAE)

Supervised Agricultural Experience (SAE) is one of the integral components of all Agricultural Education Programs. Each Ag Student is required to develop an SAE project. SAE stresses the real world application of classroom instruction and provides valuable life skills in employability, record keeping, marketing and entrepreneurship.

There are several types of SAE's a student may participate in at the Killingly Ag-Ed Program. They include: Placement (Paid worker), Volunteer (Non-Paid worker at a registered Not-For-Profit Organization), Entrepreneurship (owning a small business), Research (using the scientific method), Home and Community Improvement and Career Exploration. A student may have multiple SAE's. Parents, Students and Agriculture Teachers work cooperatively to develop an appropriate and individualized SAE program for each student. The SAE project is required, graded and students are awarded .5 credits each year for meeting project expectations. For more information and examples, see our web page at [www.killinglyschools.org/aged](http://www.killinglyschools.org/aged)

## PROGRAM AND FACILITIES OVERVIEW

The Killingly Regional Agricultural Education Center is a part of Killingly High School in Dayville, CT. The Agricultural Education Center is a state of the art 30,000 square foot facility featuring an animal facility, aquaculture lab, four-chambered greenhouse, biotechnology lab, food science kitchen, as well as fully equipped shop facility with carpentry, welding and mechanics areas. This modern facility was built with the assistance of a State grant specifically for the Agricultural Education Program. We maintain a 20-acre land laboratory 'school farm' near Killingly Intermediate School, and a 10-acre wood lot.

*Our program is regional and we accept students from other area towns that wish to study Agricultural Education. The towns served are; Brooklyn, Canterbury, Eastford, Griswold, Killingly, Plainfield, Pomfret, Putnam, Sterling, Thompson, Voluntown and Woodstock.*



The animal science lab facilities and barn provides housing for both large and small animals. Students participate in all aspects of animal husbandry for all types of animals including livestock and companion animals.

The land lab and woodlot provide an opportunity for all students to get practical experience in forestry, forage crop production, gardening, wildlife management, natural resources, landscaping, and equipment operation.



The agricultural engineering shop has equipment to provide students with basic skills related to woodworking, metalworking, welding, plumbing, electrical circuits, equipment operation, machine maintenance and repair, structures, and painting.

The greenhouse facilities allow for production of horticultural crops and research. The classroom, head-house, and sales area allow for floral design and marketing of student work.



The Aquaculture and Aquaponics Laboratory grows both ornamental fish and food fish. In addition, we have 6 aquaponics beds that allow for using the fish waste to grow vegetable crops. Students are involved in all aspects of building, operating and maintaining these systems.

## FREQUENTLY ASKED QUESTIONS

### **If my student does not live in Killingly, how will they get to school?**

Once a student is accepted to the Agricultural Education program, guidance counselors from Killingly High School work with you and your sending school district to transition your student to our school. Your sending district is responsible for paying the tuition cost that is set by the State, as well as providing transportation.

### **What does the first year curriculum look like?**

During freshman year, all students take an exploratory course in Agricultural Education. The units covered include FFA Leadership, Supervised Agricultural Experience, Agriscience, Natural Resources, Plant Science, Animal Science, Food Science and Agricultural Mechanics.

### **How is Agricultural Education scheduled?**

Agricultural Education courses are electives that fulfill a variety of the graduation requirements depending on which courses are taken; including STEM elective, humanities elective, science elective and arts elective.. During the freshman year, students are scheduled for one period every other day (1 credit). During the sophomore year, students are scheduled for class every day (2 credits). During the junior and senior years, students will take a 1.5 credit course that meets for single periods during one semester and double periods the opposite semester.

### **How are Agricultural Education courses leveled?**

All courses are developed to accommodate a variety of student interests and ability levels. We offer 6 Early College Experience courses (up to 16 college credits) that are weighted as Advanced Placement, all other agriculture courses are weighted College Prep. Agricultural Education students are often some of the highest achieving students in the school.

### **Who are the Agriculture Teachers?**

The Killingly Regional Agricultural Education Center is staffed by five instructors. Each one specializes in one of the major areas of Plant Science, Animal Science, Mechanics, Environmental Science/Aquaculture and Food Science/Biotechnology. See our website for contact information, [www.killinglyschools.org/aged](http://www.killinglyschools.org/aged).

### **What career opportunities are there in the agriculture industry?**

About 21 million people are employed in all kinds of agriculture-related careers, however only 10% of the jobs are in traditional production agriculture. According to the USDA, "The agricultural, food and renewable natural resources sectors of the U.S. economy will generate an estimate 57,900 annual openings for individuals with – degrees in food, renewable energy and environmental specialties..." <https://www.purdue.edu/usda/employment/> There are over 250 agricultural careers where instruction in agriculture would provide the background for immediate employment or for additional education to meet a career goal.

### **Is this program structured like the program at a CT Technical High Schools?**

Once students are accepted and enroll in our Agricultural Education Program, they become Killingly High School students. Killingly High School is a comprehensive high school that offers a variety of courses in both the core areas and numerous electives including CTE (Career and Technical Education) courses. Students can take any of the courses offered at KHS or participate in any available extra-curricular activities including sports. A student's schedule has 7 blocks on an A/B rotation, their agriculture course is one or two of those blocks. The remaining blocks will be filled with other required and elective courses. See this webpage for information about KHS course offerings <https://www.killinglyschools.org/killingly-high-school/academics>.

### **How do I apply?**

Interested students must complete the *Connecticut Agricultural Science and Technology Education Program Application for Student Admission*. All applicants must participate in an interview in order to be considered for acceptance.

Interviews are typically conducted in January and admissions decisions are usually made in February. We will continue to accept and evaluate applications until the incoming class is full and once full, we do maintain a waitlist. The application can be downloaded from our website go to [www.killinglyschools.org/aged](http://www.killinglyschools.org/aged) and click "How to Apply". You can get a hard copy of the application from your middle school's guidance counselor or by visiting us in person at our Agricultural Education Center in Killingly High School.