

**INDEPENDENT SCHOOL
DISTRICT #624**



**SCHOOL BOARD
WORK SESSION
PACKET**

August 28, 2023

Independent School District No. 624

MISSION STATEMENT

The mission of the White Bear Lake Area School District, the community at the forefront of educational excellence, honoring our legacy and courageously building the future, is to ensure each student realizes their unique talents and abilities, and makes meaningful contributions with local and global impact through a vital system distinguished by:

- *Students who design and create their own future*
- *A culture that respects diverse people and ideas*
- *Safe, nurturing and inspiring experiences*
- *Exceptional staff and families committed to student success*
- *Abundant and engaged community partners*

**INDEPENDENT SCHOOL DISTRICT NO. 624
WHITE BEAR LAKE, MN 55110**

To: Members of the School Board

From: Dr. Wayne A. Kazmierczak
Superintendent of Schools

Date: August 23, 2023

A work session of the White Bear Lake Area School Board will be held on **Monday, August 28, 2023**, at 5:30 p.m. in Room 112 at District Center, 4855 Bloom Avenue, White Bear Lake, MN.

WORK SESSION AGENDA

A. PROCEDURAL ITEMS

1. Call to Order
2. Roll Call

B. DISCUSSION ITEMS

1. Free School Meals Update
2. Elementary English Language Arts Curriculum Review Process

C. REVIEW OF SUPERINTENDENT'S EVALUATION*

D. ADJOURNMENT

**This portion of the meeting may be closed to discuss evaluation of superintendent, pursuant to Minnesota Statutes 13D.05, Subd. 3(a).*

B. DISCUSSION ITEMS

AGENDA ITEM: **Free School Meals Update**

MEETING DATE: **August 28, 2023**

SUGGESTED DISPOSITION: **Discussion Item**

CONTACT PERSON(S): **Tim Wald, Assistant Superintendent for
Finance and Operations;
Bridget Lehn, Director of Nutrition Services**

BACKGROUND:

On Friday, March 17, 2023, Governor Walz signed the Free School Meals bill into law. This took effect July 1, 2023. This legislation provides the reimbursement for one free breakfast and lunch to students who receive meals through their school's participation in the National School Lunch Program (NSLP) and the School Breakfast Program (SBP). Director of Nutrition Services, Bridget Lehn, will provide an overview of information about the meal program set to begin with the 2023-2024 school year.



FREE SCHOOL MEALS FOR KIDS PROGRAM

m DEPARTMENT
OF EDUCATION

What is the Difference?

MN Free School Meals Program

- Additional state funding
- Reimburses for students who do not qualify for free or reduced-price meals
- All students receive meals at NO COST!
- Must participate in the Federal NSLP and SBP and adhere to same regulations

National School Lunch Program (NSLP) and School Breakfast Program (SBP)

- Federally funded reimbursement rates for free, reduced and paid
 - Free students fully reimbursed federally
- MN added reimbursement to allow reduced students meals at no cost
- Paid students received a small amount of federal and state reimbursement to offset the total meal cost
 - WBL prices 2022-2023 were
 - \$2.95 Elementary
 - \$3.25 Secondary

MN Free School Meals Update

- One (1) Breakfast and One (1) Lunch Meal per student each *in-person* academic school day*
 - Offering breakfast is now required, even on late start days
- Preschool *is* eligible**
- ~~Free and Reduced Lunch Applications~~ aka Application for Educational Benefits still required to be distributed***
 - There is no minimum percentage of free and reduced-price eligible students required
- The program is *permanent*
- Does not include after-school snack, supper or non-school days
- Meals may not be sent home as they were during the pandemic. This includes any potential e-learning days
 - Occasional field trips are an exception
- Pin numbers are required!



Communications

Discounts Available...
APPLY TODAY!

White Bear Lake Area Schools



The Application for Educational Benefits offers families the opportunity to receive DISCOUNTS & FREE services.

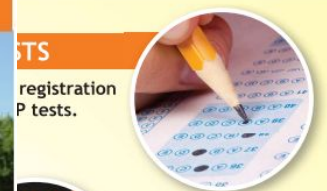
Application for Educational Benefits

Apply today to qualify for benefits

Our school offers healthy meals each day. **We are a part of Minnesota's Free School Meals Program, which means that all students can get one breakfast and one lunch free of charge each day at school.**

Although no application is required to receive this free meal benefit, filling out the Application for Educational Benefits is still important because your child(ren) may qualify for other benefits such as reduced sports/activity fees, reduced internet access and utility bills, reduced AP test registration and college application fees, reduced drivers training and more!

Your application may also help the school qualify for discounts, other meal programs, and educational funds.



SCHOOL FUNDING

Helps the school qualify for education funds and discounts.

Common Questions



MOST SPORTS/ACTIVITIES

Free or discounted pay-to-participate sport and activity fees.

OTHER BENEFITS

Potential discounts on utility bills,



Important Nutrition Services Information

Free School Meals

Our school offers healthy meals each day. We are a part of Minnesota's Free School Meals Program, which means that all students can get one breakfast and one lunch free of charge each day at school.

- Breakfast includes 1 entree, fruit, juice and milk.
- Lunch includes 1 entree, fruit, vegetable and milk.

Items that require payment are listed below:

- second meals or extra entrees
- milk only, if bringing lunch from home
- a la carte purchases
- adult meals

Depositing money into a student's account:

Families may deposit funds into student's accounts for extra meal purchases via schoolcafe.com/isd624 (QR code at right). Students may also deposit cash or checks into their accounts before school or during lunch in the school cafeteria.



WBLAS Online Payment page

Any unused balance from prior years will carry over.

Contact nutritionservices@isd624.org with questions.

Students enter their PIN each time they take a school meal. Help your student get ready by learning their PIN!

Practice your PIN!

(write PIN in image at right to practice)
PIN numbers will be available in ParentVUE soon, or families can contact nutritionservices@isd624.org to get PIN.



Educational Benefits

Although meals are free, the Application for Educational Benefits may help your student qualify for benefits including reduced activity fees, discounted internet access, and more! Also, applications help our school receive federal funding.

Application for Educational Benefits



Application link is available at this QR code or at schoolcafe.com/isd624

2022-2023 Lunch Reimbursement Rates (KKFA included)

Payment Type	Paid Rates	Reduced - Price Rates	Free Lunch Rates
Federal Combined	\$0.85	\$4.01	\$4.33
State Combined	\$.125	\$0.525	\$0.125
Total Payment	\$0.975	\$4.535	\$4.535
Elementary Paid Price \$2.95	\$3.925		
Secondary Paid Price \$3.25	\$4.225		

2023-2024 Lunch Reimbursement Rates

Payment Type	Paid Rates	Reduced - Price Rates	Free Lunch Rates
Federal Combined	\$0.48	\$3.805	\$4.205
State Combined	\$3.85	\$0.525	\$0.125
Total Payment	\$4.33	\$4.33	\$4.33

Difference 2023-24 Lunch Reimbursement

Elementary Paid = \$0.405 increase

Secondary Paid = \$0.105 increase

Free and Reduced = \$0.205 decrease



Total SY23 Lunch Reimbursement - **\$3,377,815.240**

Total Estimated SY24 Lunch Reimbursement - **\$3,441,180.90**

Total Difference of around \$63,655.66

2023-2024 Breakfast Reimbursement Rates

Payment Type	Paid Rates	Reduced - Price Rates	Free Lunch Rates
Federal Combined*	\$0.38	\$1.98 or \$2.43	\$2.28 or \$2.73
State Combined	\$1.90 or \$2.35	\$0.30	\$0
Total Payment	\$2.28 or \$2.73	\$2.28 or \$2.73	\$2.28 or \$2.73

2022-2023 Breakfast Reimbursement Rates (KKFA included)

Payment Type	Paid Rates	KG Paid (MN Free)	Reduced - Price Rates	Free Lunch Rates
Federal Combined*	\$0.50	\$0.50	\$1.96 or \$2.37	\$2.26 or \$2.67
State Combined	\$.55	\$0.55 +\$0.75	\$0.30	\$0
Total Payment	\$1.05	\$1.80	\$2.26 or \$2.67	2.26 or \$2.67
Paid Price \$1.70	\$2.75			

Difference 2023-24 Breakfast Reimbursement

Paid = \$0.47 decrease or \$0.02 severe need decrease

Free and Reduced = \$0.20 or increase or \$0.06 severe need increase

Kindergarten = \$0.48 increase or \$0.93 severe need increase

Total SY23 Breakfast Reimbursement - **\$696,989.59**

Total Estimated SY24 Breakfast Reimbursement - **\$648,889.38**

Total Difference of around -\$48,100.21



SY23 - \$4,074,804.83

Estimated SY24 - \$4,090,070.28

Estimated difference SY24 Reimbursement:

\$15,265.45

Extra Entrees, Ala Carte and Negative Balances

- Milk only = \$0.50*
- Extra Entrees and Second Meals
 - Have a procedure in place to check balance first
 - Then go back for extra entree with boat or ticket
- Negative Balances -
 - Everyone should start the year at \$0
 - Ala carte items:
 - “not included in your meal” or
 - “xx costs xx you would like to purchase”
 - Have them put it back whenever possible
- Meals are not free for adults - \$2.25 Breakfast, \$4.95 Lunch



**THANK
YOU!**

AGENDA ITEM: **Elementary Literacy and English Language Arts Curriculum Review Process**

MEETING DATE: **August 28, 2023**

SUGGESTED DISPOSITION: **Discussion Item**

CONTACT PERSON(S): **Dr. Alison Gillespie, Assistant Superintendent for Teaching and Learning;**
Jennifer Babiash, Director of Teaching and Learning

BACKGROUND:

Jennifer Babiash, Director of Teaching and Learning and Cynthia Mueller, Principal on Special Assignment and District Literacy Specialist Lead will give an update on the Elementary Literacy and English Language Arts Curriculum Review Process that was conducted over the past two years.

K-5 Elementary Literacy Update and ELA Curriculum Review Process

August 28, 2023



White Bear Lake Area Schools

Standards Based Learning Framework

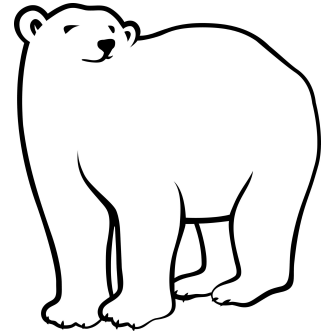
Exceptional Learning for All Students

Cultural • Linguistic • Educational Equity & Achievement • Responsive
Focusing on the Student Experience

UNIVERSAL: TIER 1 How we serve all students	Guaranteed Viable Curriculum <i>What we teach</i>	Universal Instruction <i>How we teach</i>	Assessment <i>How we ensure learning</i>
	Guaranteed and Viable <ul style="list-style-type: none"> Inclusive Accessible Clearly-defined Curriculum <ul style="list-style-type: none"> Learning materials Aligned to standards 	Strategies <ul style="list-style-type: none"> Evidence-based Culturally responsive and affirming 	Practices <ul style="list-style-type: none"> Evidence of learning aligned to standards Data-driven decision making Clearly-defined
	Evidence: Learning Progressions	Evidence: Instructional Look-fors	Evidence: <ul style="list-style-type: none"> Standards Based Grading and Reporting Proficiency Scales

WBLAS Elementary Literacy Vision

Each student is **guaranteed** learning experiences that **develop** their lifelong literacy.



Vision Term Descriptions

- **each** - every single student (strategic plan alignment)
- **guaranteed** - right, access, responsibility placed on us, a promise to our students and community
- **learning experiences** - authentic, differentiated, including and beyond the “literacy block”
- **literacy** (literate) - read, write, speak, think
- **develop** - learning progressions, growth, continuous

The vision was developed collaboratively by the WBLAS Elementary Literacy Instructional Leadership Team during the fall of 2021.

2021-2023 Elementary Literacy Focus Areas

District Instructional Leadership

Who: Elementary Principals, Instructional Coaches, Early Childhood Supervisors, Teaching & Learning, District Leadership

Why: Leadership matters for student achievement.

What: Focus on developing our leadership capacity to lead and ensure our literacy vision is realized.

How:

- Bi-weekly meetings
- Analyze student outcomes
- Read & understand research and best practices.
- Utilize the Administrator's Literacy Framework (LETRS)
- Create and implement literacy action plan.

LETRS Professional Development

Who: K-5 Classroom teachers, Intervention Teachers, SPED Teachers, EL Teachers, Instructional Coaches.

Why: Teachers are the most important factor for student achievement.

What: Complete Year 1 or 2 year LETRS professional development on the science of reading

How:

- 4 virtual training dates with a LETRS facilitator
- Weekly online learning
- Collaborative learning through cross-district Communities of Practice.

ELA Curriculum Review

Who: Instructional Coaches, teachers in a variety of roles throughout the district, Teaching & Learning

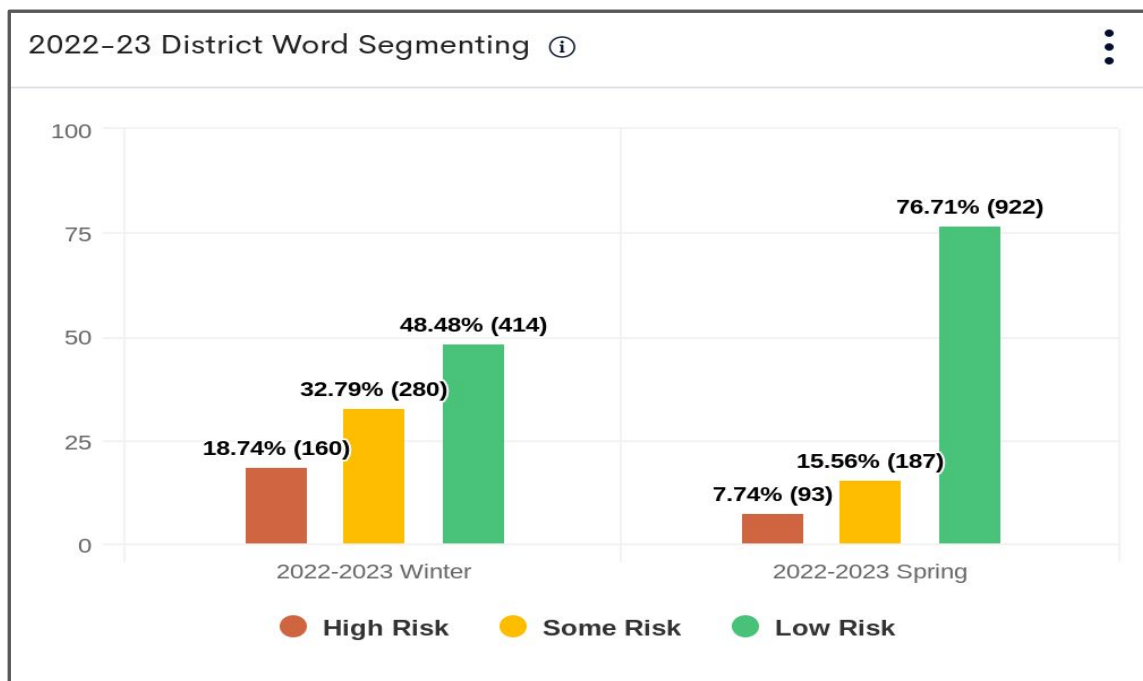
Why: High quality instructional materials and practices are a key component for learning

What: Develop a vertically aligned, guaranteed, and viable curriculum experience for our students that aligns with literacy research.

How:

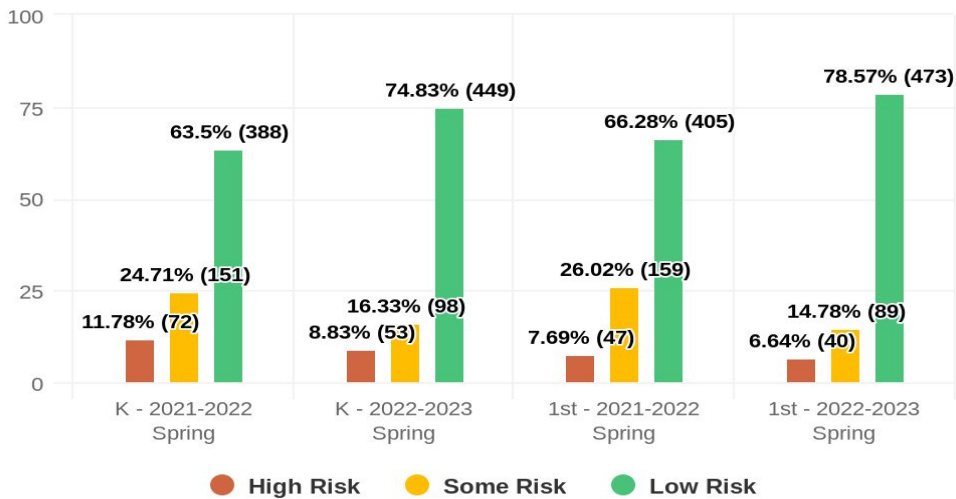
- Research and select instructional materials for K-5 universal instruction (tier I).
- Identify professional development

WBLAS - K-1 Foundational Reading Skills Results



WBLAS - K-1 Foundational Reading Skills Results

2022-2023 District Word Segmenting Gr. K-1



- FASTBridge
- Word Segmenting Subtest
- Phonemic Awareness

ELA Curriculum Review Process

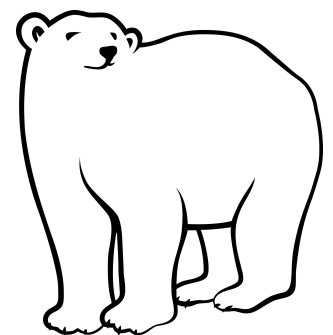
- Elementary English Language Arts (ELA) underwent a two year curriculum review beginning the fall of 2021 and included over 50 educators from every elementary school, every educator role (classroom, special education, intervention, EL, educational equity specialist, and instructional coach), one early childhood educator, and one middle school educator.
- The purpose of the curriculum review was to research, evaluate, and develop a vertically and horizontally aligned, guaranteed, and viable curriculum experience for all students.
- The work was grounded in a shared literacy vision, WBLAS Mission Statement, WBLAS Equity Commitment, as well as local priority statements.

Local Priority Statements

- Must include all elements of the Big 5 (phonemic awareness, phonics, fluency, vocabulary, comprehension) of Literacy and be based on the most current research in the Science of Reading.
- The ELA curriculum must include a variety of high quality texts (such as varied genres, decodable texts and representative texts) that are inclusive, authentic, accessible, and engaging for all learners.
- The ELA curriculum must represent and reflect a diverse set of student identities and perspectives. It must include culturally responsive instructional practices.
- The ELA curriculum must be usable, organized in a teacher friendly manner, have digital counterparts and resources for ongoing and in-depth PD for all teachers.
- To be explicit and systematic, the ELA curriculum must include simple to complex developmental skills in the areas of word recognition and language comprehension as well as simple to complex developmental skills in foundational writing and composition.
- The ELA curriculum must include high quality Big 5 skill-based, formative and summative assessments, based on the Minnesota ELA Standards.
- The ELA curriculum must include a variety of materials to support differentiation. The materials must meet the needs of all learners and be aligned to state standards.
- The ELA Curriculum must provide resources for cross curricular instruction while supporting student engagement and interest.
- The ELA curriculum must include a common scope and sequence of skills that can be implemented with consistency across the district.

ELA Curriculum Recommendation

At the April 17th, 2023 ELA Curriculum Review Team meeting, the ELA Curriculum Review team made the decision to recommend **Core Knowledge Language Arts (CKLA)** as the WBLAS elementary adopted ELA curriculum because of its overall consistent alignment to our elementary literacy vision, local priority statements, and evidenced-based practices.



Why CKLA?

Local Priority Statements

Pilot Team Feedback

Equity Decision Making Protocol

4-Way Equity Decision Making Protocol

- 1 How does this help to provide opportunities to students who have been marginalized within the system in the past?
- 2 How does this help to ensure equitable access for all?
- 3 How does this help to eliminate barriers based on race/ethnicity, gender, disability, age, or other protected groups?
- 4 How does this ensure that the same rigorous standards for academic performance exist for all students?



CKLA Implementation - Decision-Making

How:

- '22-'23 School Year: K-5 Implementation of CKLA
- ELA Curriculum Review Team decision was based on a cost/benefit analysis.

Cost	Benefit
<ul style="list-style-type: none"> ● Cognitive load ● Time to learn new curriculum with limited PD days ● Quick turn around for equity team to work with units ● Multi-age - adapting to ● Restructure CIT 	<ul style="list-style-type: none"> ● Alignment as a system ● Ready for change: Build student background knowledge, High interest ● Increase student outcomes sooner ● Collaboration ● Equitable ● Ease of PD ● Capitalize on momentum of learning ● Alignment to LETRS sooner ● All teachers have access to materials (including multi-age) ● K-5 consistency with Special Education ● On track for new standards and MCA ● Focused PD

CKLA Implementation

How:

- Workshop week - CKLA Overview PD
- Ongoing job-embedded support and collaboration
 - Building: Principal, Instructional Coach, PD
 - District: Communities of Practice & PD
- Instructional Schedule
 - District Instructional Leadership Team is developing guidelines
- Guaranteed and Viable Curriculum

2023-2024 Elementary Literacy Focus Areas

District Instructional Leadership

Who: Elementary Principals, Instructional Coaches, Professional Learning Leaders, Early Childhood Supervisors, & Teaching & Learning Leadership Team

Why:

- Literacy Vision: *Each student is guaranteed learning experiences that develop their lifelong literacy.*
- WBLAS Equity Commitment

What:

WBLAS Standards Based Learning Framework for ELA

How:

- Clearly define, communicate, monitor, and support guaranteed and viable ELA curriculum experiences that align with evidence-based practices.

LETRS Professional Development

Who: 1-5 Classroom teachers, Intervention Teachers, SPED Teachers, Speech/Language Pathologists, EL Teachers, new teachers

Why: Teachers are the most important factor for student achievement.

What: Complete Year 1 or Year 2 LETRS professional development on evidence-based reading instruction

How:

- 4 training dates with a LETRS facilitator
- Weekly online learning
- Collaborative learning through cross-district Communities of Practice.

ELA Curriculum Review

Who: Elementary Educators

Why:

- Literacy Vision: *Each student is guaranteed learning experiences that develop their lifelong literacy.*
- WBLAS Equity Commitment

What:

Implementation of WBLAS Standards Based Learning Framework for ELA and Amplify CKLA and EL Language Studio

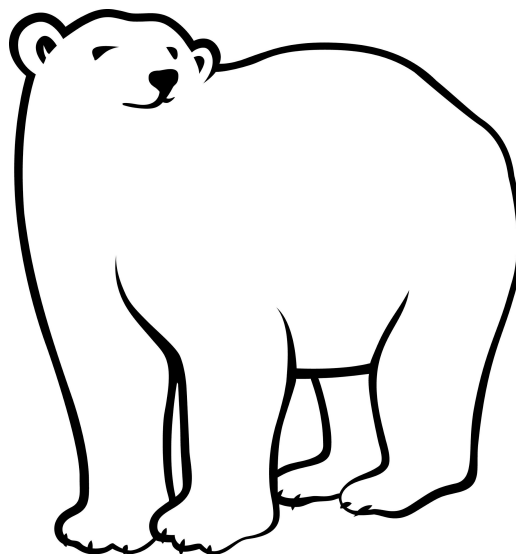
How:

- Implementation of defined guaranteed & viable learning experiences.
- Provide ongoing job-embedded training and support through instructional coaching & communities of practice
- Monitor and support implementation

WBLAS PreK-5 LETRS Professional Development Plan

	2021-2022	2022-2023	★ 2023-2024	2024-2025
LETRS Year 1 Units 1-4	<p>Cohort A: Early Childhood</p> <p>Cohort B: Kindergarten Instructional Coaches</p>	<p>Cohort C: 1st-5th Grade EL Intervention SPED Cross-Categorical SPED Tier 2 Middle School Intervention</p> <p>LETRS for Administrators</p>	<p>Cohort D: SPED Cluster Speech/Language Pathologists New Teachers</p>	<p>New Teachers</p>
LETRS Year 2 Units 5-8		<p>Cohort B: Kindergarten Instructional Coaches</p>	<p>Cohort C: 1st-5th Grade EL Intervention SPED Cross-Categorical SPED Tier 2 Middle School Intervention</p>	<p>Cohort D: SPED Cluster Speech/Language Pathologists New Teachers</p>

What questions might you have?



C. REVIEW OF SUPERINTENDENT'S EVALUATION

AGENDA ITEM: **Review of Superintendent's Evaluation***
MEETING DATE: **August 28, 2023**
SUGGESTED DISPOSITION: **Discussion Item**
CONTACT PERSON(S): **Jessica Ellison, School Board Chair**

BACKGROUND:

The School Board will review and discuss the evaluation of the superintendent for the 2022-23 school year.

This portion of the meeting will be closed as permitted by Minnesota statutes.

**This portion of the meeting may be closed to discuss evaluation of superintendent, pursuant to Minnesota Statutes 13D.05, Subd. 3(a).*