



Information for the Medical Pathway

The Career Inspiration Center is offering 4 career pathways in STEM related industries. Highlighted are 4 medical field job titles.

EXPLORE more career pathways at www.stancareerpath.com

REGISTERED NURSE



- Assess patient health problems and needs
- Administer nursing care
- Advise patients

Entry Level Education:
Bachelor's Degree

DENTAL HYGIENIST



- Administer oral hygiene care to patients
- Assess patient oral hygiene problems or needs

Entry Level Education:
Associate's Degree

EMERGENCY MEDICAL TECHNICIANS & PARAMEDICS



- Assess injuries and illnesses
- Administer basic emergency medical care
- Administer basic or advanced emergency medical care

Entry Level Education:
Postsecondary
Non-degree Award

FAMILY MEDICINE PHYSICIAN



- Diagnose, treat, and provide preventive care to individuals and families
- Refer patients to specialists when needed for further diagnosis or treatment.

Entry Level Education:
Doctoral or Professional
Degree

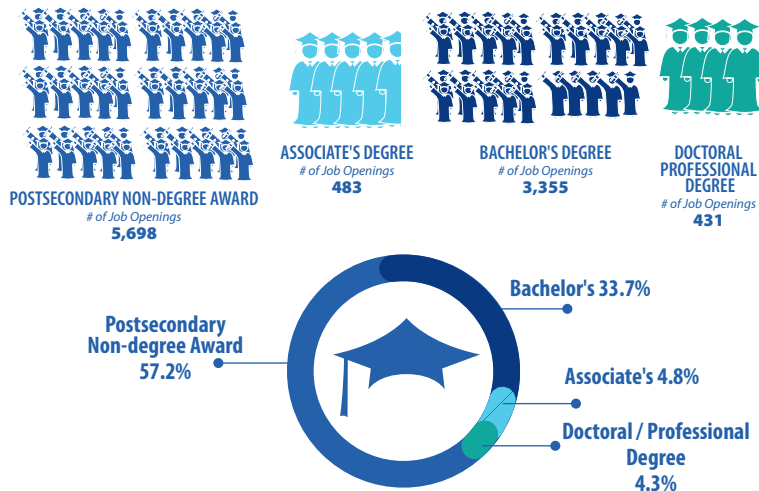
The Career Inspiration Center collaborates with 12 school districts, post-secondary programs, local businesses, and community-based organizations to ensure students have access and awareness opportunities in the four major industry sectors in Stanislaus County. Visit www.stancoe.org/cic for our full list of partners.

Source: All Occupations in Stanislaus County, CA (Emsi Q1 2021 Data Set) provided by Opportunity Stanislaus and <https://www.bls.gov/soc/>

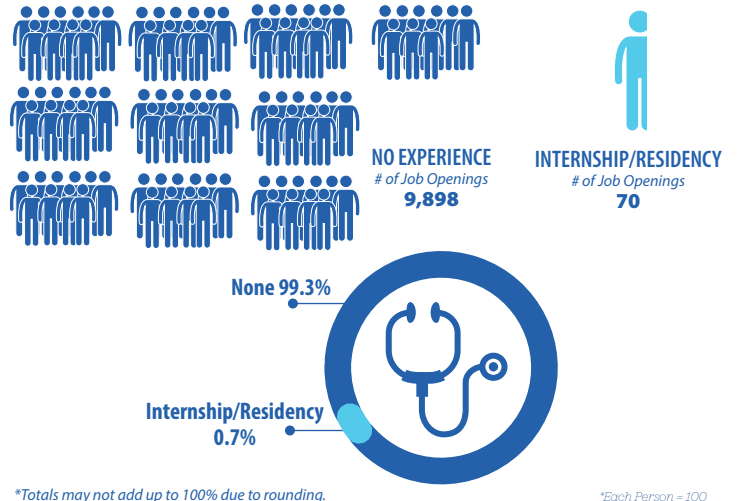
MEDICAL PATHWAY INFORMATION

Job Description	2022-2032 Job Openings	Median Hourly Earnings	Median Annual Earnings
Dentists, General	122	\$76.41	\$158,930
Physical Therapists	239	\$58.48	\$121,639
Registered Nurses	3,355	\$52.91	\$110,049
Family Medicine Physicians	50	\$57.16	\$118,884
Psychiatrists	7	\$87.80	\$182,630
Surgeons, Except Ophthalmologists	13	\$88.80	\$184,703
Dental Hygienists	229	\$49.16	\$102,244
Radiologic Technologists and Technicians	254	\$41.86	\$87,076
Emergency Medical Technicians and Paramedics	202	\$16.79	\$34,922
Nursing Assistants	2,251	\$16.52	\$34,359
Dental Assistants	1,265	\$19.15	\$39,824
Medical Assistants	1,912	\$17.52	\$36,442
Phlebotomists	68	\$20.94	\$43,554

LEVEL OF ENTRY LEVEL EDUCATION

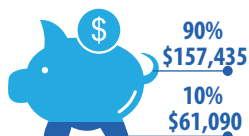


WORK EXPERIENCE REQUIRED



INCOME

MEDIAN YEARLY INCOME



MEDIAN HOURLY INCOME



MEDIAN INCOME

