



Fairfield Public Schools

Scenario 4B

August 29, 2023



Scenario 4B

- ECC program located at Jennings and Holland Hill
 - At the direction of FPS Administrators, it was determined that Jennings and Holland Hill would each have four ECC classrooms plus one full size ECC support classroom for OT/PT (5 classrooms total). These are deducted from the capacity.
 - Shift students out of Jennings and Holland Hill so that those buildings have enough space for the ECC.
- CLC is moved from Jennings to Dwight.
- ELA program shifts from McKinley to Burr.
- Make all schools compliant with state racial balance law (<25% of districtwide average)
- Minimize disruption elsewhere.



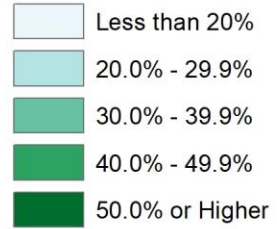
Findings/Constraints

- Traditional redistricting cannot achieve sustainable racial balance within 20% of districtwide average at all schools unless McKinley students are shifted to at least two other schools or satellite zones are used.
- Cannot comply with racial balance law (<25% of districtwide average) by only shifting students out of McKinley.
 - Additional students also need to be shifted into McKinley from neighboring attendance zones.
- The areas of McKinley that border Stratfield have the lowest share of minority students in McKinley. This means that a larger number of students must be impacted in order to meet racial balance objectives using a traditional redistricting approach (assuming some students are shifted to Stratfield).

Fairfield "Planning Blocks" K-5 Enrollment, by Percent Minority Students: 2022-23

 School Points

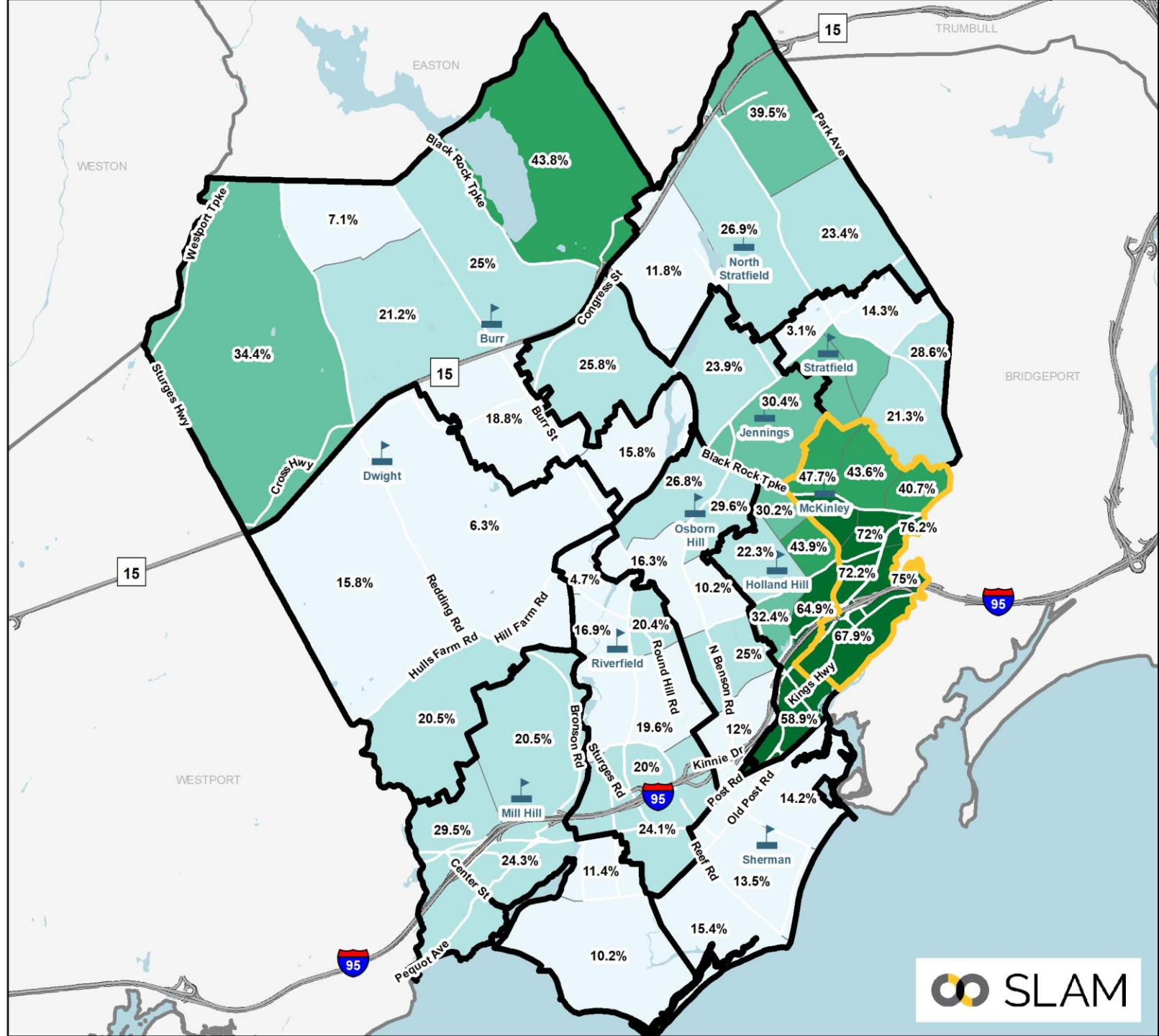
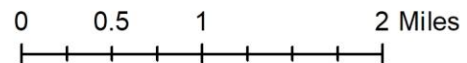
Percent Minority



Calculated based on PSIS Information provided by Fairfield Public Schools

**K-5 Districtwide Average
Percent Minority 2022-23: 26.7%**

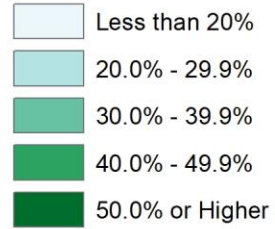
**No school can exceed
51.7% minority students**



Fairfield "Planning Blocks" K-5 Enrollment, by Percent Minority Students: 2022-23

 School Points

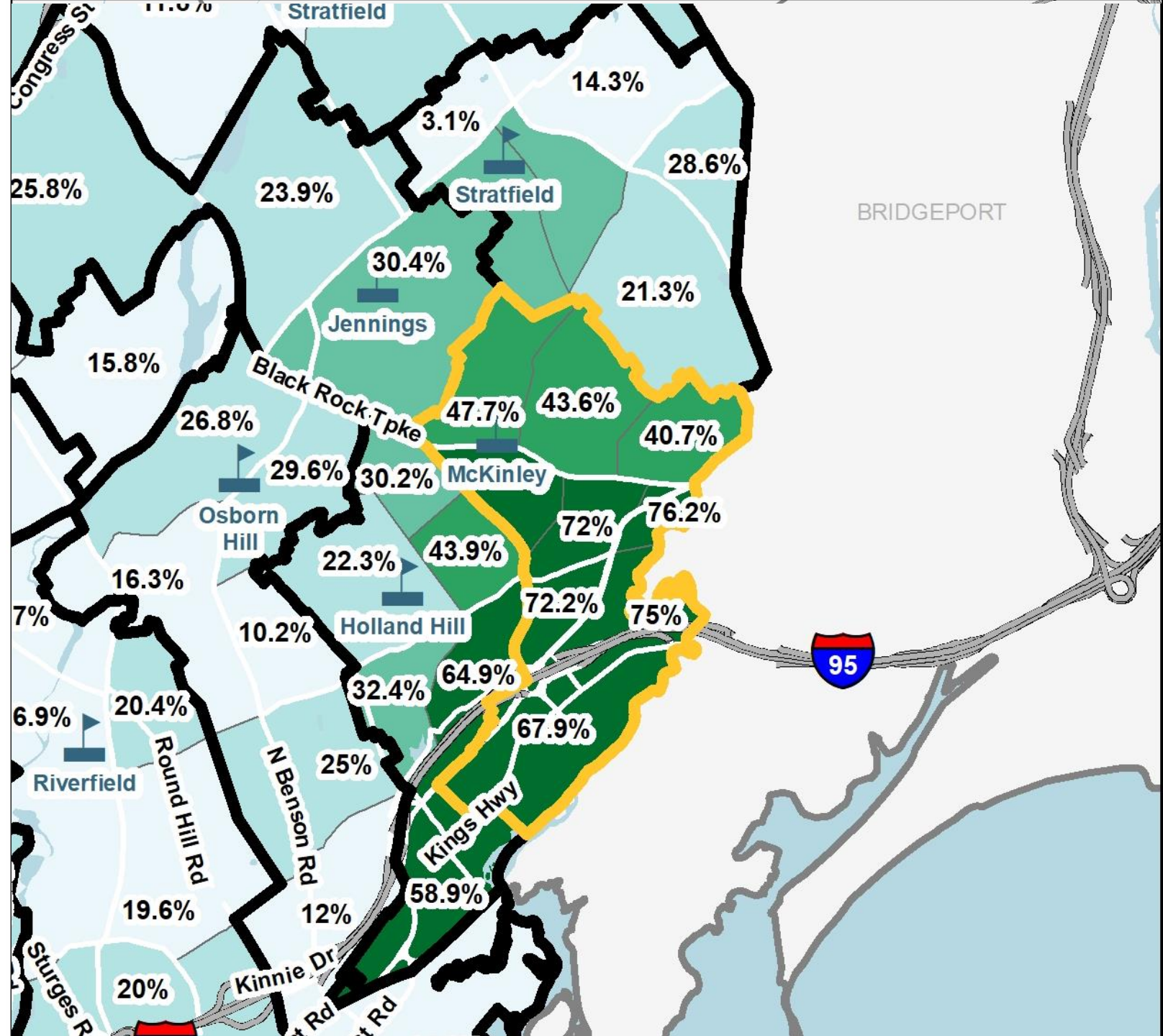
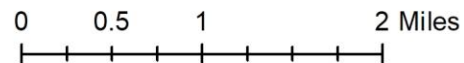
Percent Minority



Calculated based on PSIS Information provided by Fairfield Public Schools

**K-5 Districtwide Average
Percent Minority 2022-23: 26.7%**

**No school can exceed
51.7% minority students**



Scenario 4B Elementary Change Areas



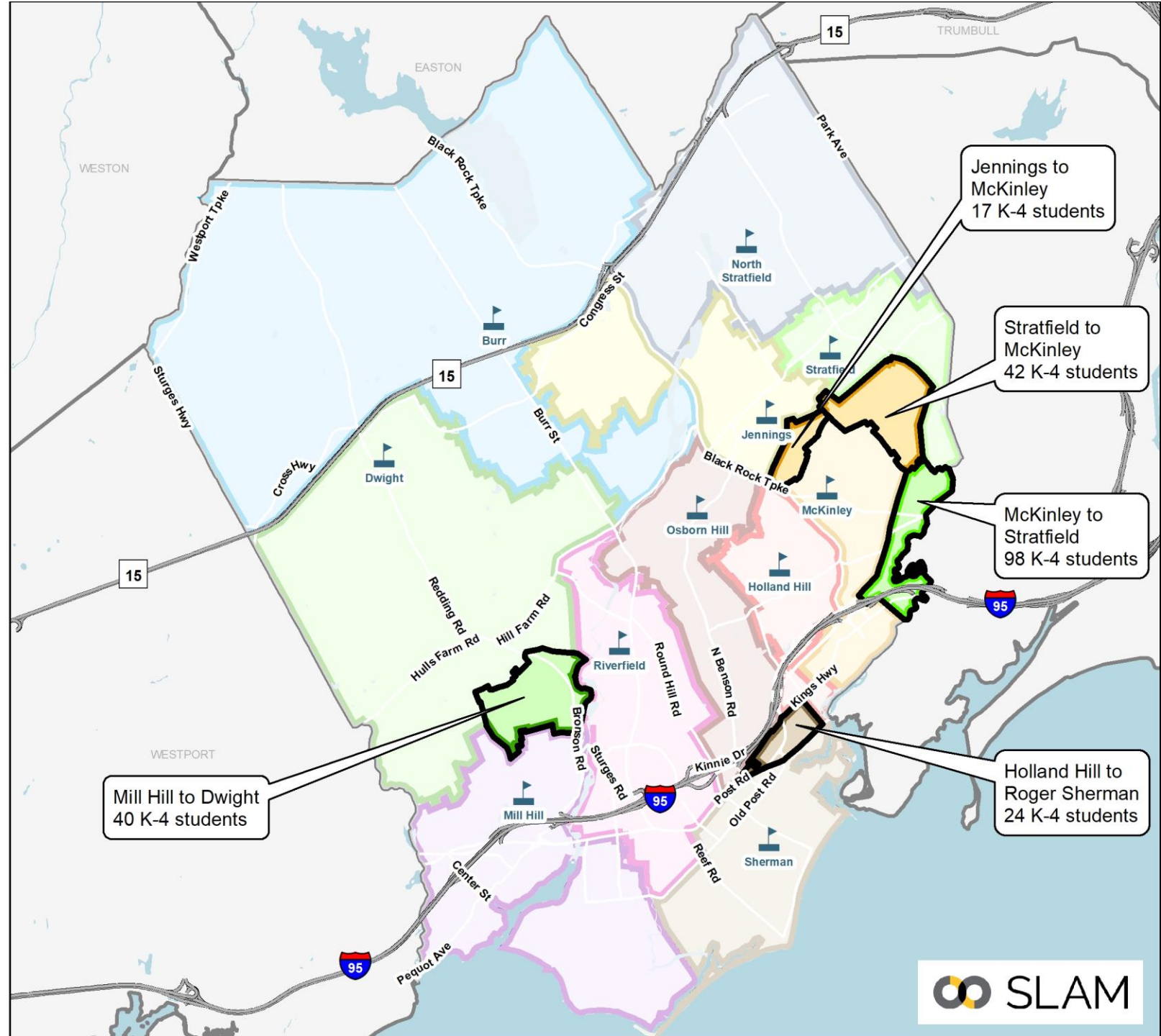
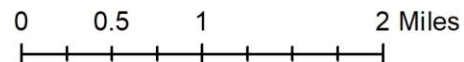
Redistricting Impacts (K-4):

- ~8% of elementary students

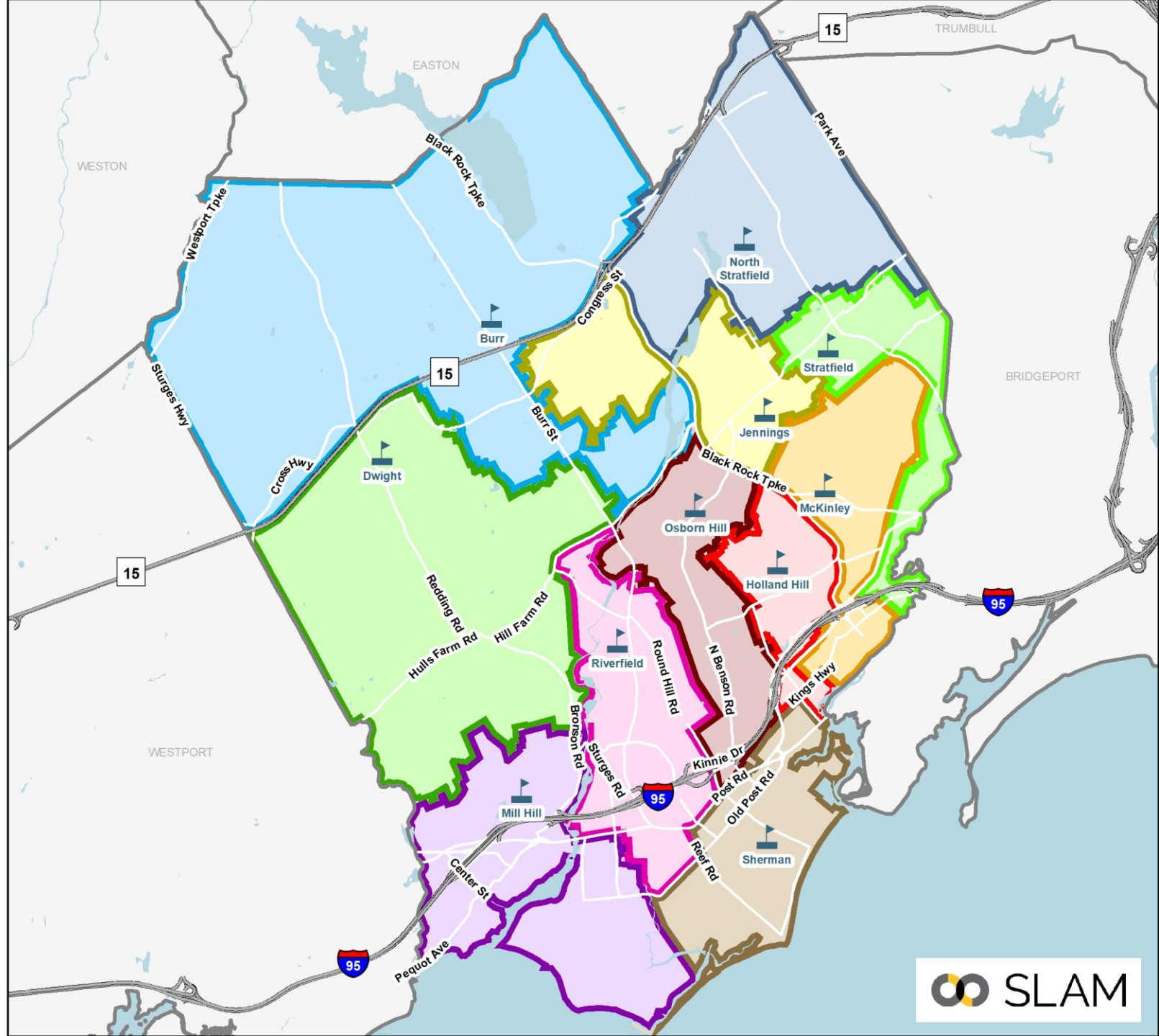
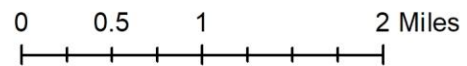
Greatest Share of Impacts to:

- McKinley: 34% of total impact
- Stratfield: 15% of total impact
- Mill Hill: 15% of total impact

Note: All students were returned to their zoned schools



Scenario 4B Elementary Districts





Scenario 4B: Programs & Utilization

School	Capacity & Programs						Enrollment & Utilization (22-23)		
	Total Full-Sized CRs	K-5 Instruction	CLC	Early Literacy Academy	Therapeutic Learning Centers	ECC	K-5 Operational Capacity	Scenario 4B Enrollment	Scenario 4B Utilization
Burr	28	19	2	3	0	0	399	301	75.4%
Dwight	21	16	2	0	0	0	336	297	88.4%
Holland Hill	27	19	0	0	0	5	399	348	87.2%
Jennings	23	13	0	0	0	5	273	247	90.5%
McKinley	30	24	0	0	0	0	504	396	78.6%
Mill Hill	25	19	2	0	0	0	399	350	87.7%
North Stratfield	28	24	0	0	0	0	504	442	87.7%
Osborn Hill	30	22	2	0	0	0	462	434	93.9%
Riverfield	27	21	1	0	2	0	441	386	87.5%
Roger Sherman	25	22	0	0	0	0	462	428	92.6%
Stratfield	27	24	0	0	0	0	504	409	81.2%
Total All Schools	291	223	9	3	2	10	4,683	4,038	86.2%

- CLC shifted from Jennings to Dwight.
- ELA program shifts from McKinley to Burr.
- ECC space at Holland Hill and Jennings (4 classrooms + 1 support space each)



Scenario 4B: Racial Balance

- McKinley would have complied with the state racial balance law each of the last seven years, except for 2020-21.
- McKinley would have deviated from the districtwide average by an average of 23.3%, ranging from 22.1% to 25.0% over the last seven years.
- Holland Hill would have been impending imbalance for 3 of the last seven years, ranging from 12% to 16% higher than districtwide average.

Scenario 4B Racial Balance: 7-Year Look Back

School	2016-17	2017-18	2018-19	2019-20	2020-21	2021-22	2022-23	7-Yr Avg
Burr	15.6%	17.7%	17.6%	20.4%	19.9%	23.2%	23.6%	19.7%
% Deviation	-8.1%	-7.1%	-8.1%	-5.2%	-6.6%	-3.1%	-3.1%	-5.9%
Dwight	14.5%	12.5%	16.1%	15.4%	17.7%	16.3%	16.2%	15.5%
% Deviation	-9.3%	-12.3%	-9.5%	-10.2%	-8.8%	-10.0%	-10.6%	-10.1%
Holland Hill	39.8%	40.2%	40.1%	38.8%	38.8%	41.3%	40.5%	39.9%
% Deviation	16.1%	15.4%	14.4%	13.1%	12.3%	15.1%	13.8%	14.3%
Jennings	20.5%	25.7%	26.7%	27.0%	26.6%	23.8%	27.9%	25.5%
% Deviation	-3.2%	0.9%	1.1%	1.4%	0.1%	-2.5%	1.2%	-0.2%
McKinley	47.0%	46.9%	47.7%	48.6%	51.5%	50.5%	50.0%	48.9%
% Deviation	23.3%	22.1%	22.1%	22.9%	25.0%	24.2%	23.3%	23.3%
Mill Hill	19.5%	21.2%	20.3%	21.0%	22.5%	20.8%	20.9%	20.9%
% Deviation	-4.2%	-3.6%	-5.3%	-4.6%	-4.0%	-5.4%	-5.9%	-4.7%
North Stratfield	25.4%	24.9%	26.2%	24.7%	24.6%	24.4%	23.8%	24.9%
% Deviation	1.7%	0.1%	0.6%	-1.0%	-1.9%	-1.9%	-3.0%	-0.7%
Osborn Hill	15.1%	18.4%	20.3%	20.8%	22.7%	21.4%	21.0%	19.9%
% Deviation	-8.7%	-6.4%	-5.4%	-4.8%	-3.8%	-4.9%	-5.8%	-5.7%
Riverfield	13.6%	15.3%	16.3%	16.5%	16.8%	18.5%	18.1%	16.5%
% Deviation	-10.1%	-9.5%	-9.3%	-9.1%	-9.7%	-7.8%	-8.6%	-9.2%
Roger Sherman	16.0%	16.9%	18.0%	15.5%	15.9%	15.5%	18.7%	16.6%
% Deviation	-7.7%	-7.9%	-7.6%	-10.2%	-10.6%	-10.8%	-8.0%	-9.0%
Stratfield	31.7%	31.2%	30.1%	30.6%	30.3%	30.0%	32.5%	30.9%
% Deviation	8.0%	6.4%	4.4%	5.0%	3.9%	3.7%	5.8%	5.3%
K-5 Total	23.7%	24.8%	25.7%	25.6%	26.5%	26.3%	26.7%	25.6%

Impending Imbalance

Racially Imbalanced



Scenario 4B: Projected Utilization

Elementary Utilization

School	22-23	23-24	24-25	25-26	26-27	27-28	28-29	29-30	30-31	31-32	32-33	1st 5 Year Avg	2nd 5 Year Avg
Burr	75.4%	77.2%	78.7%	78.2%	81.7%	81.0%	83.5%	84.5%	88.2%	89.5%	89.5%	79.3%	87.0%
Dwight	88.4%	87.2%	89.0%	86.6%	87.2%	86.9%	89.0%	89.9%	90.8%	92.0%	91.7%	87.4%	90.7%
Holland Hill	87.2%	89.2%	92.0%	92.2%	95.7%	96.0%	94.5%	95.7%	96.5%	97.0%	96.7%	93.0%	96.1%
Jennings	90.5%	92.3%	94.9%	92.7%	93.4%	94.9%	94.9%	96.3%	97.8%	98.9%	98.5%	93.6%	97.3%
McKinley	78.6%	81.2%	76.2%	78.0%	80.4%	81.9%	85.9%	88.5%	89.3%	90.1%	90.1%	79.5%	88.8%
Mill Hill	87.7%	88.2%	87.0%	88.7%	88.7%	89.5%	90.0%	91.2%	92.5%	93.7%	93.7%	88.4%	92.2%
North Stratfield	87.7%	88.7%	90.5%	89.9%	91.5%	89.9%	92.9%	92.7%	93.7%	95.0%	95.0%	90.1%	93.8%
Osborn Hill	93.9%	96.3%	97.6%	98.1%	100.9%	98.7%	97.0%	97.8%	98.9%	100.0%	99.6%	98.3%	98.7%
Riverfield	87.5%	87.5%	87.3%	88.7%	92.5%	89.3%	90.0%	91.4%	92.1%	93.2%	92.7%	89.1%	91.9%
Roger Sherman	92.6%	95.2%	95.2%	95.5%	93.7%	96.5%	97.0%	97.4%	98.1%	98.9%	99.1%	95.2%	98.1%
Stratfield	81.2%	83.9%	83.9%	84.3%	82.7%	83.7%	82.7%	83.5%	84.9%	86.1%	85.7%	83.7%	84.6%
Total	86.2%	87.8%	88.1%	88.3%	89.7%	89.6%	90.5%	91.5%	92.8%	93.8%	93.7%	88.7%	92.5%

Greatest Confidence – 1st 5-yrs

Reminder that 100% utilization means the building is at its operational target of 21 students per available classroom. This represents 87.5% of the maximum capacity.

- Overall utilization increases to about 94% of operational target by the 2031-32 school year.
- Over the next five years, all schools average +/-10% of districtwide utilization
 - Lowest utilization at Burr and McKinley, although utilization rate improves over the last five years of the projections as new housing is completed.
 - Highest utilization at Osborn Hill, which operates near 100% of operational target most years.



Scenario 4B: Projected Enrollment

Elementary Projections by School (Medium)

ES School	22-23	23-24	24-25	25-26	26-27	27-28	28-29	29-30	30-31	31-32	32-33	5-year Δ	10-year Δ
Burr	301	308	314	312	326	323	333	337	352	357	357	7.3%	18.6%
Dwight	297	293	299	291	293	292	299	302	305	309	308	-1.7%	3.7%
Holland Hill	348	356	367	368	382	383	377	382	385	387	386	10.1%	10.9%
Jennings	247	252	259	253	255	259	259	263	267	270	269	4.9%	8.9%
McKinley	396	409	384	393	405	413	433	446	450	454	454	4.3%	14.6%
Mill Hill	350	352	347	354	354	357	359	364	369	374	374	2.0%	6.9%
North Stratfield	442	447	456	453	461	453	468	467	472	479	479	2.5%	8.4%
Osborn Hill	434	445	451	453	466	456	448	452	457	462	460	5.1%	6.0%
Riverfield	386	386	385	391	408	394	397	403	406	411	409	2.1%	6.0%
Roger Sherman	428	440	440	441	433	446	448	450	453	457	458	4.2%	7.0%
Stratfield	409	423	423	425	417	422	417	421	428	434	432	3.2%	5.6%

Scenario 4B MS Boundaries

Scenario 4B MS

- Fairfield Woods
- Roger Ludlowe
- Tomlinson
- School Points
- Scenario 4B Change Areas
- Elementary Districts

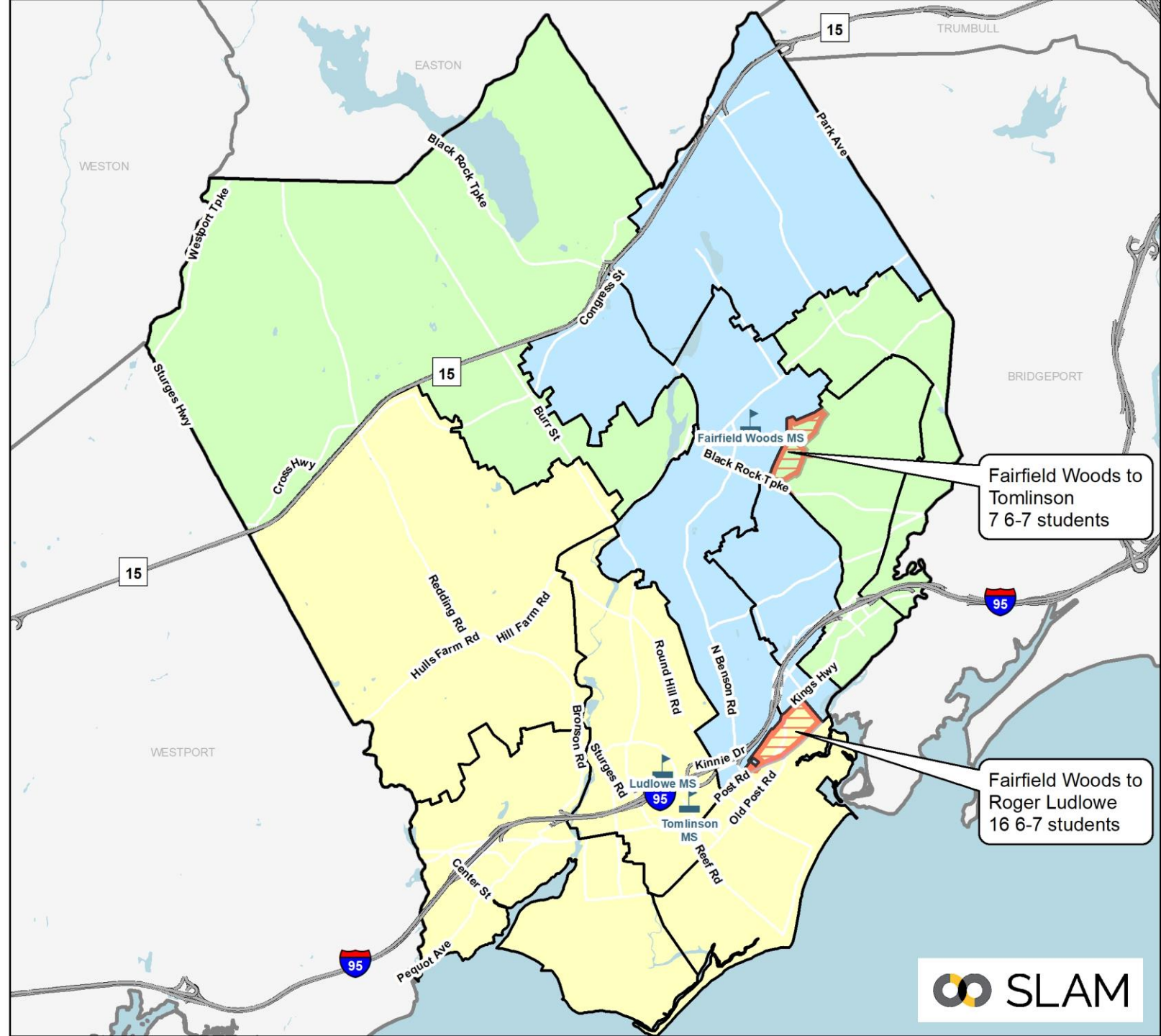
Maintains current feeder pattern based on modified elementary boundaries

Redistricting Impacts (6-7):

- About 2% of middle school students would be impacted,
- Impacts could be reduced with grandfathering






Note: All students were returned to their zoned schools

0 0.5 1 2 Miles



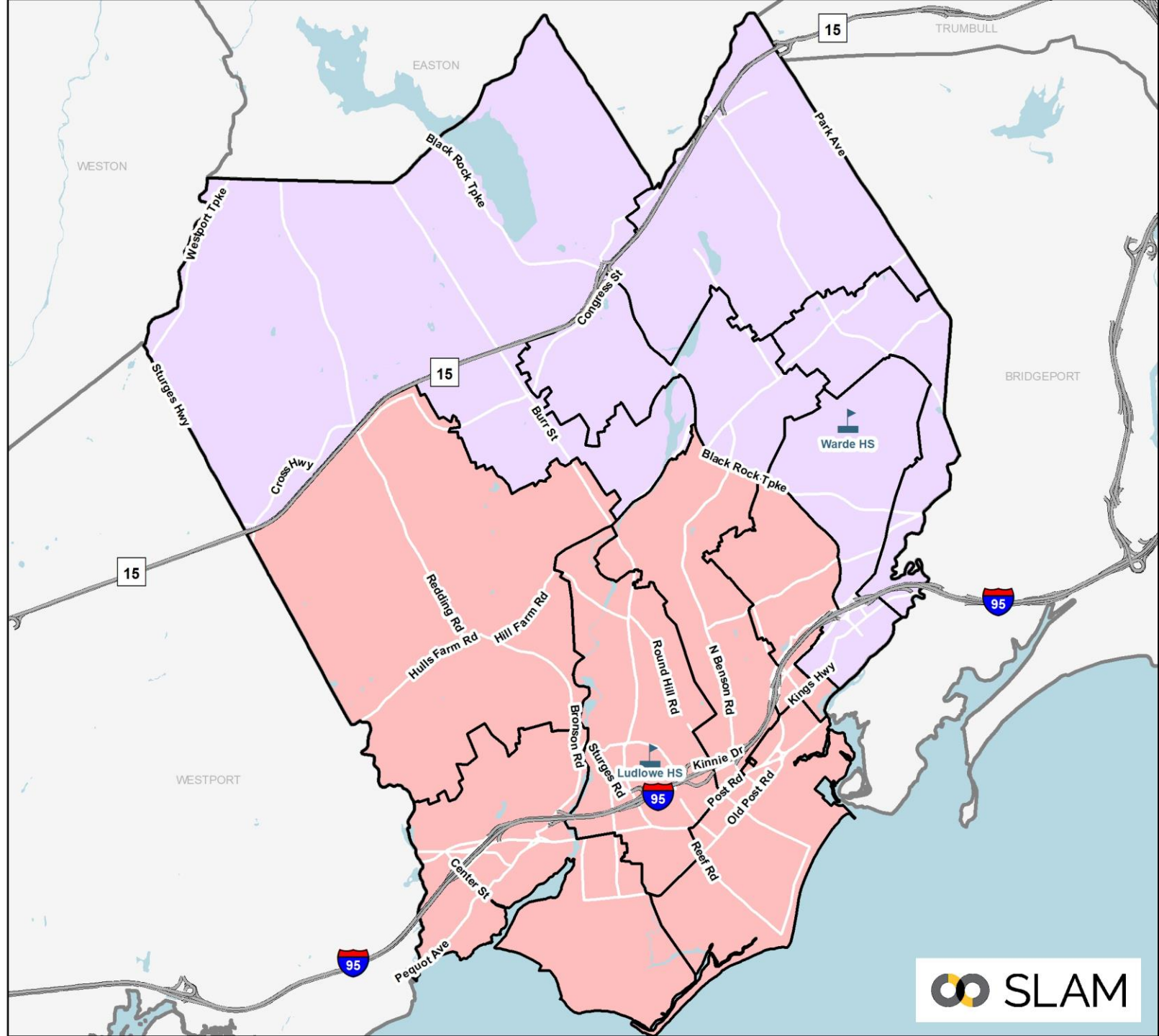
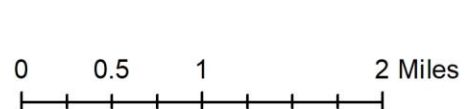
Scenario 4B HS Boundaries

Scenario 4B High School Boundaries

-  Fairfield Ludlowe
-  Fairfield Warde
-  School Points
-  HS Change Areas
-  Elementary Districts

No changes to High School boundaries or feeder patterns

Note: All students were returned to their zoned schools





Scenario 4B: Projected MS & HS Enrollment

Middle Projections by School (Medium)

MS School	22-23	23-24	24-25	25-26	26-27	27-28	28-29	29-30	30-31	31-32	32-33	5-year Δ	10-year Δ
Fairfield Woods	720	709	703	751	756	830	826	846	810	806	827	15.3%	14.9%
Roger Ludlowe	789	766	751	732	734	759	766	757	737	740	756	-3.8%	-4.2%
Tomlinson	624	583	578	568	605	593	586	586	580	587	604	-5.0%	-3.2%

High Projections by School (Medium)

HS School	22-23	23-24	24-25	25-26	26-27	27-28	28-29	29-30	30-31	31-32	32-33	5-year Δ	10-year Δ
Fairfield Warde	1,388	1,348	1,285	1,272	1,206	1,196	1,202	1,199	1,277	1,277	1,264	-13.8%	-8.9%
Fairfield Ludlowe	1,528	1,535	1,452	1,426	1,379	1,351	1,339	1,355	1,404	1,402	1,411	-11.6%	-7.7%
Alternative HS	66	66	66	66	66	66	66	66	66	66	66	0.0%	0.0%

- Shifts some students out of Fairfield Woods to Roger Ludlowe and Tomlinson.
 - Cohort sizes range from 250 to 300 at Fairfield Woods, ~230 to 270 at Roger Ludlowe, ~and ~180 to 210 at Tomlinson.
 - Large bubble class enters Fairfield Woods beginning in 2027-28.



Scenario 4B: Considerations

- Maintains 11 elementary school alignment with contiguous attendance zones.
- McKinley would have deviated from the districtwide average by an average of 23.3%, ranging from 22.1% to 25.0% over the last seven years.
 - May not be sustainable in the long term
 - Holland Hill also in the “impending imbalance” category for three out of the last seven years.
- Somewhat balanced utilization. All schools within 10% of districtwide average over the next five years, with gap shrinking over the final five years.
- Redistricting impacts to ~8% of elementary students. About half of the impact of original Scenario 4.
 - Impacts to ~2% of elementary walkers.
- Redistricting impacts to ~2% of middle school students
- No impacts to high school students

Objective	Description	Score
Address Racial Imbalance	McKinley would have been at or slightly below 25% of districtwide average over the last 7 years.	Fair/Poor
Balance Utilization Across all Elementary Schools	All schools within 10% of districtwide average for the first 5 years of the projections	Fair
Minimize Redistricting Impacts	8% of elementary students	Good
Student Walker Impacts	Net impacts to ~2% of elementary walkers. Some impacted walkers may be able to walk to new school.	Good
Secondary School Impacts	No changes to MS feeder No changes to HS feeder 3% of MS students impacted No changes to HS attendance zones	