



United Steele Workers PTA Meeting

Tuesday, September 10, 2019 at 8:10 a.m.
Steele Elementary School, Library

Attendees

Jennifer Cooper
Trudi Jackson
Alisha O'Connor
Ann Griner
Shanna Weaver
Sarah Pont
Michelle Rodriguez
Meg Ford
Rob Seel
Khristine Prickett Vadala
Cindy DeLoach
Julian Flores
Megan Harris
Courtney Hertner
Alison Ogren
Ryan Capp

Governance

President Jennifer Cooper called the meeting to order at 8:09am. A quorum was present.

Secretary Ann Griner distributed meeting minutes from the September 10, 2019, meeting for review. Normally meeting minutes will be posted on the Steele PTA site (<https://www.d11.org/domain/1738>) one week in advance for review. These minutes were an exception due to a short cycle between meetings and waiting for input on one item. Approval of this set of minutes was requested at the end of the meeting.

Principal's Report

Principal Ryan Capp provided the Principal's Report.

- Training for the new social-emotional curriculum, Random Acts of Kindness, begins September 23. The Random Acts of Kindness program provides practice in real-life scenarios like how to handle conflict with a friend.
- The District Math Coach came in and met with every team to make a plan for every grade level. They are forming math groups in each grade. We will review again in the Oct/Nov or Jan/Feb timeframe.

- Started after school math professional development, which focuses on learning strategies for small-group math learning.
- Jennifer gave an overview of the 21st Century Community Room; it will include small group spaces, new furniture, and a Lego wall.
- Ryan said that everything is on order for the 21st Century Community Room , we are waiting to hear when it's going to come in. Alison Ogren ordered some stools, which have already arrived. The list of items ordered for the project is included as an attachment.
- Alison and Courtney Hertner met to talk about the Lego wall, which is a simple DIY project.
- The Steele School Accountability Committee, a guidance group for metrics and goals for the school, meets September 11th at 5:15pm.

Budget

Treasurer Alisha O'Connor gave the budget report for activity from August 1 to September 10. By the October 8 meeting, there will be more activity and a more robust report.

- PTA membership is currently approximately 30 less than last year. Sarah Pont noted that once we start the Shakespeare program, we should get more membership because every parent/staff who wants to volunteer needs to be a member. Jennifer said we need to provide membership numbers to the Sstate PTA organization by the end of September for insurance purposes.
- We should break even or make a small amount of money on Steele Star t-shirt orders. Cindy DeLoach explained the rolling color.
- Teacher accounts – each teacher receives \$500 to use at their discretion. Teacher grants are separate requests.

Calendar Review

Vice President Trudi Jackson provided a calendar review.

- Clothing and Costume Swap – PTA members can shop Wednesday, September 18. The swap is open to non-members Thursday, September 19.
- The Used Book Sale is also Thursday, September 19th. .50 paperback, \$1 hardback.
- September 24th is Bleating Heart Night at Goat Patch Brewing. One dollar from every pint sold goes directly to the PTA.
- Shanna Weaver is in need of coat racks for the clothing swap, and requests they be delivered to the school September 16th or 17th.
- The next Star Pop-Up Coffee Shop is Friday, September 13th.
- Pictures in the Park planning continues, scheduled for October 5th. Two family photos for \$20 at Monument Valley Park.
- Cindy suggested having PTA membership forms available at upcoming events so we can get more members signed up. Rob Seel suggested using QR codes for ease of payment.

Old Business

No old business was discussed.

New Business

- Jennifer reviewed replacing the Apex fundraiser with a direct ask campaign. To kick off the direct ask campaign, we plan a model rocket launch during the September 13th coffee pop up. Every grade will receive a rocket to decorate and launch, courtesy of Apogee Components. Sarah Pont suggested consulting the PTA insurance to see if rocketry is covered. Jennifer will follow up with the insurance company.
- D11 School Board member Mary Coleman will provide a keynote speech during the October 8, 2019 PTA meeting.
- Khristine Pickett-Vadala is setting up Chipotle fundraiser in February that will benefit the Shakespeare program.
- Michelle Rodriguez moved to approve the August 27, 2019 PTA Meeting Minutes; Cindy Deloach seconded. Motion carried.
- Cindy moved to approve the September 10, 2019 Budget Report; Shanna Weaver seconded. Motion carried

Jennifer adjourned the meeting at 8:36am.

Draft

STEELE ES – COLLABORATION SPACE

VALIDATION FINAL 6-3-19



PROJECT CONTACT

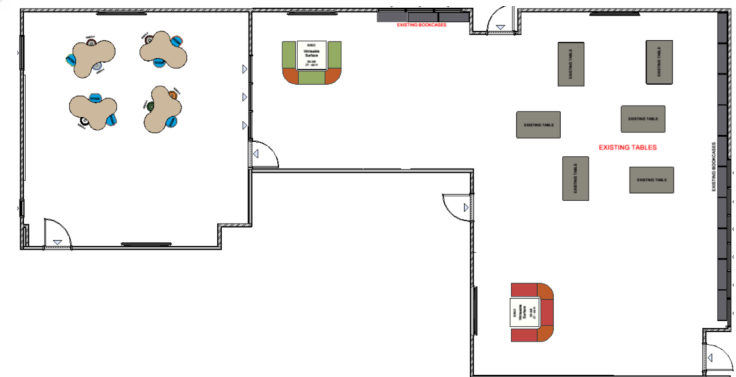
Seth Elliott | 719.377.1853 | selliott@officescapes.com

CUSTOMER: STEELE ES
PROJECT #: 6633-138125

100 COLLABORATION SPACE



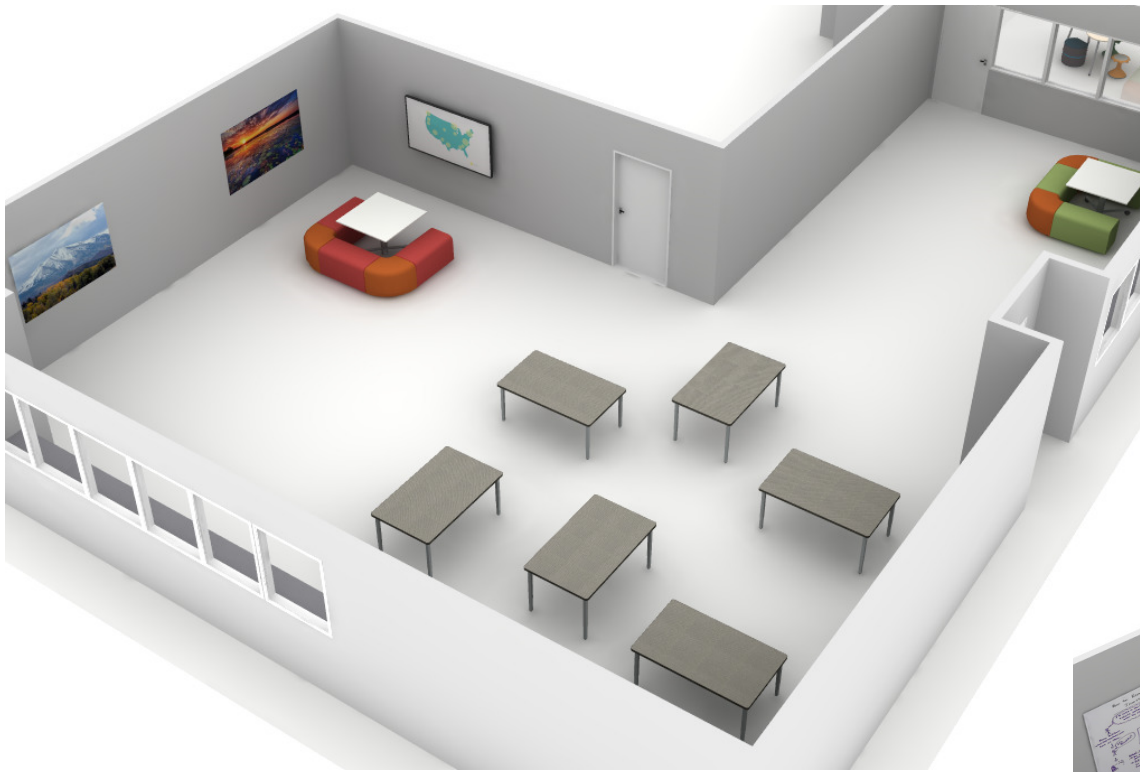
1. Align benches and VS Rondo Lift table on casters with markerboard top.
2. Existing tables
3. Align benches with VS Rondo Lift table on casters with markerboard top. Existing bookcases
4. Puzzle tables on casters 25"H with Hokki stools 15"H and Rocker Otts 16"H



Note: Photos are representation of product only and may not accurately reflect actual finish selections

CUSTOMER: STEELE ES
PROJECT #: 6633-138125

100 COLLABORATION SPACE



Alight Benches & Rondo Lift Table

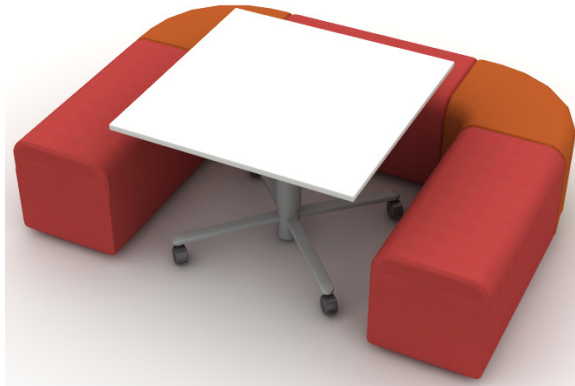
Puzzle Table & Hokki
Stools/Rocker Ottos

Note: Photos are representation of product only and may not accurately reflect actual finish selections

CUSTOMER: STEELE ES

PROJECT #: 6633-138125

100 COLLABORATION SPACE - FINISHES



Alight Benches & Rondo Lift Table

**Rondo Lift Table**

Surface: Markerboard

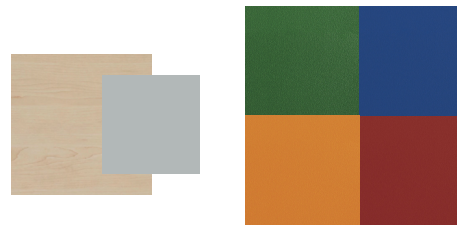
Paint: Arctic

Alight Benches

(4) Curved: Stand-In Sedona (Orange)

(3) Straight: Stand-In Apple (Red)

(3) Straight: Stand-In Parsley (Lt. Green)

Puzzle Table & Hokki
Stools/Rocker Otts**Puzzle Table**

Laminate: Natural Maple

Paint: Arctic

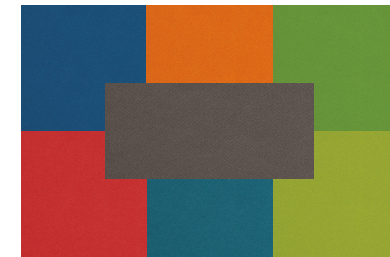
Hokki Stools

(2) Dark Green

(2) Dark Red

(1) Dark Blue

(1) Orange

**Rocker Otts**

(1) Ends: Marine Blue/Sides: Meteor (Grey)

(1) Ends: Bazaar (Orange)/Sides: Meteor (Grey)

(1) Ends: Crème De Menthe (Lt. Green)/Sides: Meteor (Grey)

(1) Ends: Meteor (Grey)/Sides: Imperial (Red)

(1) Ends: Meteor (Grey)/Sides: Turquoise

(1) Ends: Meteor (Grey)/Sides: Acid (Lt. Green)