

Colorado All-State Band Audition

Trumpet - Set 2B

1. Record the 2 octave A-Flat Major scale - articulated ascending, slurred descending

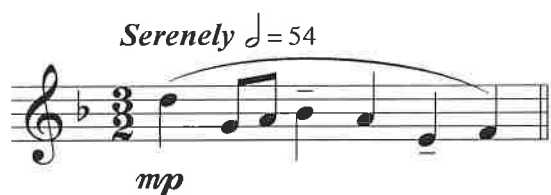


2. Record the 2 octave F-sharp harmonic minor scale - articulated ascending, slurred descending



3. Record the chromatic scale - Full Range (your best low note to your best high note) All eight notes. Play ascending and descending, articulated both up and down. Tempo: Quarter note = 104

4. Record prepared excerpt #1. Page 2, #2 from Lyrical Etudes (Snedecor) Published by PAS Music



Start: Beginning
End: End of measure 21
Tempo: Half Note = 54

5. Record prepared excerpt #2. Page 16, #11 from Lyrical Etudes (Snedecor) Published by PAS Music



Start: Beginning
End: Downbeat of measure 32
Tempo: Dotted Quarter Note = 84

Metronome markings are recommended TARGETS for students, not REQUIREMENTS. Performing at a slower tempo with greater accuracy and expression may result in a higher score.

Memorization of scales is not required.

Check the Colorado All-State Band Web-site (<https://www.coloradoallstateband.com>) for

All-State Weekend Dates

Recording Instructions

Students who do not complete their recordings according to the current procedure will be disqualified

Registration, Payment, and Audition Uploading Instructions

All registrations, audition payments, and audition recordings must be uploaded by the deadline, or will not be considered

Etude XI

Allegro ♩ = 84

mf

7

13

p

A

21

p

B

29

f

mp

36

mf

molto rit.

Tempo I

mf

43

The musical score for Etude XI is written in a single system with seven staves. The key signature is one flat (B-flat major or D minor), and the time signature is 3/8. The tempo is marked 'Allegro' with a quarter note equal to 84 beats per minute. The score begins with a mezzo-forte (*mf*) dynamic. The first staff (measures 1-6) features a melodic line with eighth and sixteenth notes, some with accents. The second staff (measures 7-12) continues the melodic development. The third staff (measures 13-20) includes a section marked 'A' and a piano (*p*) dynamic. The fourth staff (measures 21-28) continues with a piano (*p*) dynamic. The fifth staff (measures 29-35) features a forte (*f*) dynamic followed by a mezzo-piano (*mp*) dynamic, and includes a section marked 'B'. The sixth staff (measures 36-42) shows a dynamic change from mezzo-forte (*mf*) to *molto rit.* (rushing), then back to *mf* with the tempo marking 'Tempo I'. The seventh staff (measures 43-48) concludes the piece with a melodic line and a final accent.

Etude II

Serenely $\text{♩} = 54$

mp *mf*

4 *mf* *mp*

7

10 *mf*

A *Poco Piu Mosso*

13 *mf* *mf*

17 *rit.*

B *A Tempo*

20 *f* *mf*

Detailed description: The score is written for a single melodic line in treble clef, 3/4 time, with a key signature of one flat (B-flat). It consists of six staves of music. The first staff begins with the tempo marking 'Serenely' and a quarter note equal to 54 (♩ = 54). The dynamics range from mezzo-piano (mp) to mezzo-forte (mf). The second staff starts at measure 4 and includes a mezzo-forte (mf) dynamic. The third staff starts at measure 7. The fourth staff starts at measure 10 and includes a mezzo-forte (mf) dynamic. The fifth staff starts at measure 13 and includes a boxed section marker 'A' followed by the tempo marking 'Poco Piu Mosso'. It also includes mezzo-forte (mf) dynamics. The sixth staff starts at measure 17 and includes a 'rit.' (ritardando) marking with a dashed line. The seventh staff starts at measure 20 and includes a boxed section marker 'B' followed by the tempo marking 'A Tempo'. It includes forte (f) and mezzo-forte (mf) dynamics.