

Colorado Springs District No. 11 – Enrollment / Demographic Forecast



Coronado High School

*Western Demographics, Inc.
December 19, 2018*

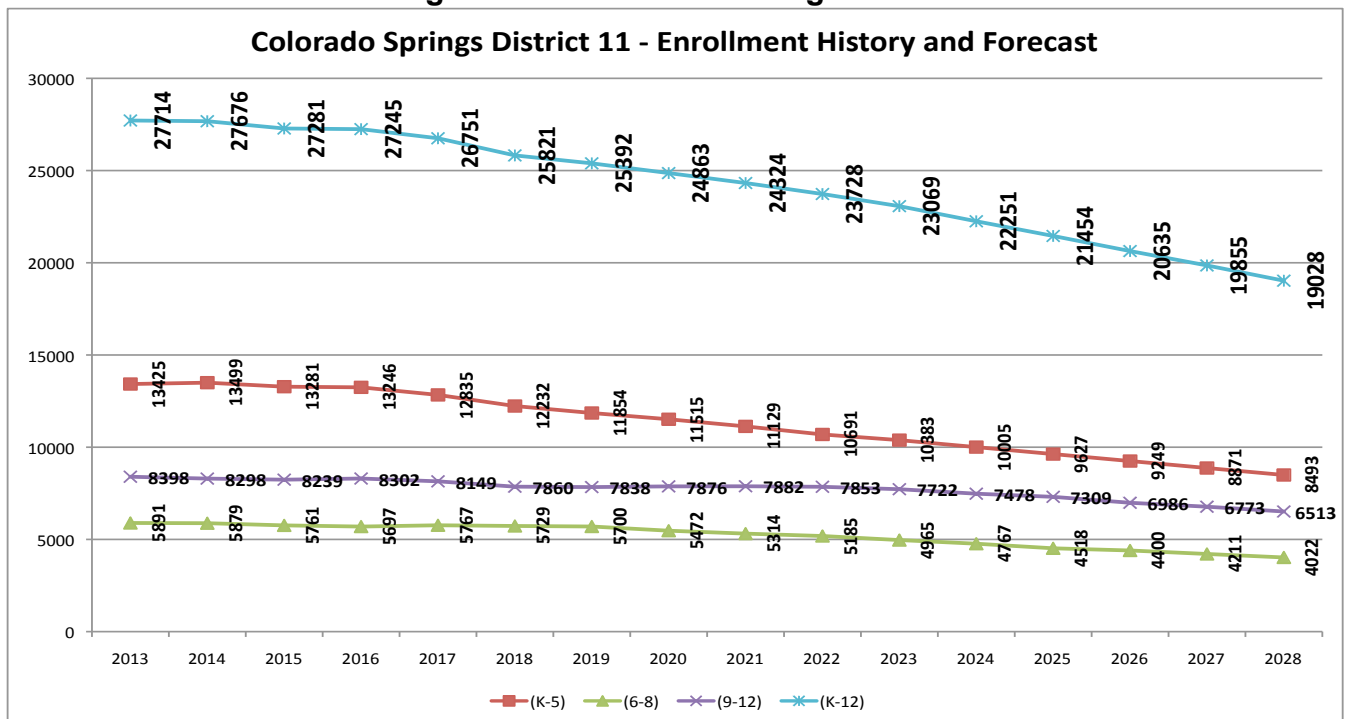


Rev 1.2

Executive Summary

Colorado Springs School District No. 11 has experienced several decades of enrollment decline and this trend is expected to continue. Fall 2018 enrollment was down approximately 830 students in the Fall of 2018. Among the potential causes are declining birth rates, competition, decline in overall public school enrollment among other education providers (market share), growth in charter schools, choice enrollment to adjacent districts, growth in online education providers and departure of families from the existing Colorado Springs housing stock. Based on these multiple factors, enrollment in the District is expected to continue to decline to approximately 20,000 students by the 2028-29 school year. The following graph illustrates this expected trend:

Figure 1 - Enrollment Change Factors



This report presents detailed data in support of a ten-year overall forecast and a five-year forecast specific to schools. The larger observations of the report can be stated as follows:

- Enrollment has declined and this trend is expected to continue
- The birth rates have declined long-term, but stabilized in recent years
- Small areas continue to produce new housing, but they will not significantly affect enrollment
- Students residing in the district are leaving to attend other schools at the rate of 600 per year
- Within this total, Charter School Institute enrollment grows by 150 per year
- There are many vacant buildings that could be used to accommodate future charter schools
- Online education is significant and growing
- Market share has declined and the north central, northeast and west areas lose the most
- The loss of enrollment is focused on the west, north central, northeast and downtown

- Strategies to promote individual schools, a focus on specialized curriculums and providing educational strands for elementary, middle and high school continuity for specialized curriculums could work to retain 25 – 33 percent of potential enrollment loss

Table of Contents

Executive Summary	2
Introduction	3
Historical Enrollment	4
Births	4
Housing Developments	6
Charter Schools	7
Vacant Buildings Suitable for Additional Charter Schools	9
Non-public Schools	11
Home-based Education	12
Students Who Leave the District (Export / Import of students)	13
Online Education	14
District 11 Market Share	14
District 11 Enrollment Change by Geographic Area	19
Ten-year Overall Forecast	23
Strategies to Address Enrollment Decline	23
Use of Specialized Curriculums to Attract Enrollment	24
Individual School Branding	24
Conclusion	24
Five-year School Forecasts by School by Grade	25

Introduction – This report was developed via the analysis of five years of historic student databases, additional data from the Colorado Department of Education and the U. S. Bureau of the Census and other specific data provided by Colorado Springs District No. 11. In general, the City of Colorado Springs and El Paso County continues to grow and the County is eventually forecast to exceed the population of the City of Denver. There are fifteen districts in the County and Colorado’s liberal choice enrollment law allows students to attend schools in any district on a space-available basis. This fact, combined with the existence of dozens of the charter schools in the area results in families having many options for school. As of the 2017-18 school year, approximately 8,900 students had left the district. This pattern of departure has accelerated in recent years and is expected to grow.

The analysis of District 11 trends is complicated by the fact that the district represents a fraction of the City of Colorado Springs and a fraction of El Paso County. This results in the need to focus on data provided by the district specific to children in the district and on data provided by the U. S. Bureau of the Census, American Community Survey which develops population estimates specific to the district focusing on recent years.

The district has continued to offer affordable housing relative to the rest of El Paso County. This fact has resulted in neighborhoods, which might have relatively high rates of departure to adjacent districts and charter schools, but still have healthy enrollments due to a housing stock that is affordable to families.

Most Colorado Charter School Institute schools in El Paso County attract students from a broad area spanning five- or ten-mile radii and accommodate students from many districts. As new charters arise, they tend to have a broader impact across a larger area as opposed to only impacting the immediate neighborhood school enrollment.

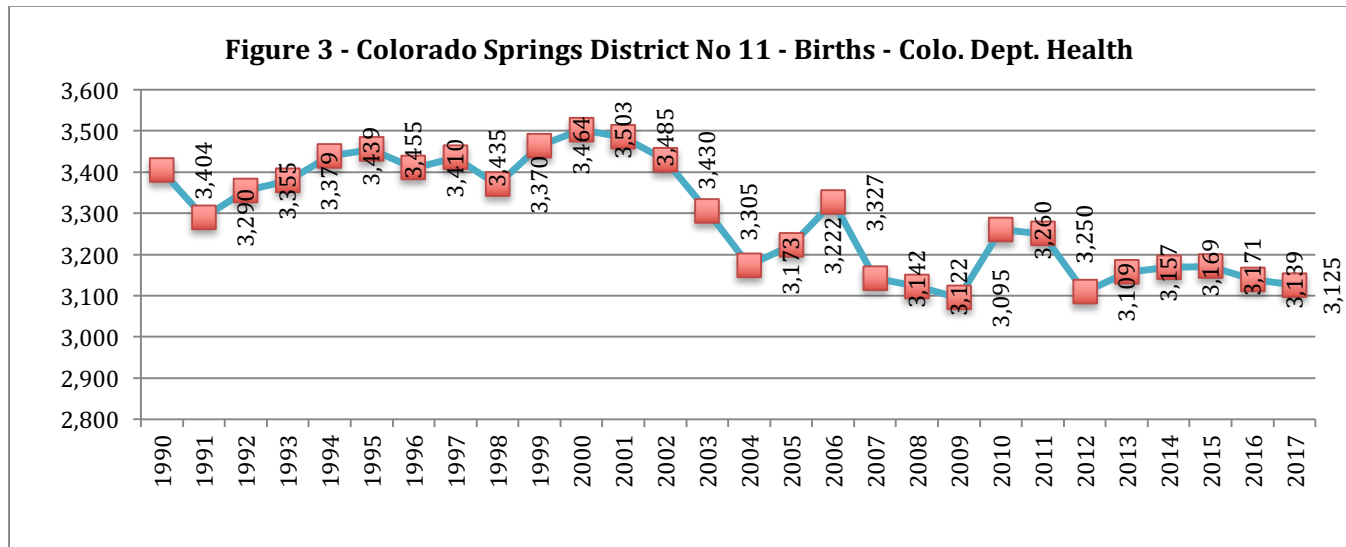
Enrollment History by Grade - District enrollment has declined significantly during the past five years with an average five-year decline of 1.3 percent. During the 2018 school year, there was a 3 percent decline that resulted in the departure of 830 students. Kindergarten enrollment has also declined significantly during the past five years and is down to 2100 from 2400 in the year 2013. Smaller first grade enrollments also indicate a long term transition to elementary school grade levels below 2,000 students. District 11 has historically lost a large percentage of its middle and high school enrollment to adjacent districts and charters. This fact helps reinforce the probability of the district losing a significant number of students during the next ten years to demographic change combined with intense competition. Figure 2 illustrates the five-year history of district enrollment.

Figure 2 – District 11 Historical Enrollment													
Year	K	1	2	3	4	5	6	7	8	9	10	11	12
2013	2403	2361	2315	2144	2137	2065	2010	1925	1956	1891	2012	2017	2478
2014	2368	2323	2302	2250	2154	2102	1912	2018	1949	1949	1952	2011	2386
2015	2290	2222	2268	2221	2188	2092	1852	1885	2024	1897	1979	1916	2447
2016	2325	2223	2129	2198	2160	2211	1926	1853	1918	1973	1951	1991	2387
2017	2182	2183	2134	2036	2175	2125	2020	1892	1855	1861	1976	1913	2399
2018	2106	1976	2089	2019	1992	2050	1895	1960	1874	1832	1868	1896	2264

Totals by School Type								
Year	(K-5)	(6-8)	(9-12)	(K-12)	ps	Tot w PS	Net Growth	
2013	13425	5891	8398	27714	690	28404		
2014	13499	5879	8298	27676	656	28332	-72	-0.3%
2015	13281	5761	8239	27281	656	27937	-395	-1.4%
2016	13246	5697	8302	27245	666	27911	-26	-0.1%
2017	12835	5767	8149	26751	676	27427	-484	-1.7%
2018	12232	5729	7860	25821	776	26597	-830	-3.0%

-1.30%

District 11 Births – 1990 – 2017 – Births have historically declined from a high of 3,500 in 2001 to a partial stability of approximately 3,100 in 2017. Births State-wide are down and many suspect that fertility rates in general may be at the start of a significant decline. The Colorado Department of Health has become extremely accurate in collecting birth data and assigning it to elementary school attendance areas and school district boundaries overall. The home address of the mother is digitally matched to addresses in the districts. Figure 3 illustrates overall births over time.



District 11 Births by elementary attendance area are shown in Figure 4. The elementary areas with increasing birth counts during the past 3 years are shown in green and those with diminishing birth counts are shown in peach.

Figure 4 - Colorado Springs District 11 - Annual Births by Attendance Area - 2010 - 2017

School	2010	2011	2012	2013	2014	2015	2016	2017	3-yr	5-yr	8-yr	School
Scott	127	107	94	105	98	101	109	124	26	30	-4	Scott
Twain	144	156	140	121	111	119	130	131	20	-9	-11	Twain
Carver	93	116	93	104	92	98	101	110	18	17	6	Carver
Steele	42	39	35	41	35	40	37	53	18	18	20	Steele
Penrose	94	84	85	81	80	85	107	92	12	7	4	Penrose
Edison	55	37	46	39	43	44	53	53	10	7	16	Edison
Monroe	139	158	152	166	154	161	128	161	7	9	24	Monroe
Queen Palmer	76	65	85	71	73	69	62	80	7	-5	25	Queen Palmer
King	126	124	115	116	110	130	111	116	6	1	2	King
Freedom	109	97	102	99	97	112	88	102	5	0	5	Freedom
Freemont	105	133	117	128	117	120	110	122	5	5	-16	Freemont
Lincoln	65	62	63	63	74	64	75	79	5	16	5	Lincoln
Taylor	72	54	56	53	68	51	65	73	5	17	28	Taylor
Audubon	86	100	81	79	86	95	97	90	4	9	5	Audubon
Columbia	80	90	68	75	70	78	91	74	4	6	7	Columbia
Henry	68	48	56	60	56	58	60	58	2	2	-5	Henry
Rudy	65	81	78	92	69	73	73	70	1	-8	3	Rudy
Rogers	124	129	117	127	118	119	104	118	0	1	29	Rogers
Howbert	44	46	53	42	51	42	54	48	-3	-5	-1	Howbert
Christa McAuliffe	158	147	142	142	163	150	144	159	-4	17	16	Christa McAuliffe
Jackson	85	99	79	97	100	115	93	96	-4	17	11	Jackson
Midland	66	62	68	57	61	65	71	57	-4	-11	7	Midland
Stratton	17	31	27	34	25	28	33	21	-4	-6	-13	Stratton
Bates	71	54	61	57	67	67	54	62	-5	1	19	Bates
Keller	74	81	74	66	66	69	74	61	-5	-13	-16	Keller
Madison	88	86	72	79	88	84	82	81	-7	9	-5	Madison
Trailblazer	43	46	43	46	53	44	65	46	-7	3	-2	Trailblazer
Bristol	42	61	39	47	41	54	41	27	-14	-12	-24	Bristol
Chipeta	85	81	83	76	88	90	71	72	-16	-11	3	Chipeta
Grant	159	133	144	115	148	123	132	132	-16	-12	-20	Grant
Hunt	183	177	174	180	174	178	176	158	-16	-16	-22	Hunt

Martinez	108	118	103	138	105	116	105	85	-20	-18	-11	Martinez
Roosevelt-Edison	145	155	137	139	145	148	146	121	-24	-16	-36	Roosevelt-Edison
West K-5	124	118	115	117	131	91	114	107	-24	-8	-8	West K-5
Wilson	98	75	112	105	112	90	83	86	-26	-26	-11	Wilson
TOTAL	3260	3250	3109	3157	3169	3171	3139	3125	-44	16	30	TOTAL

Active Land Developments - There are dozens of small in-fill single family and town house developments under construction throughout the district – few of them will produce a significant number of new students because they are such a small percentage of the overall housing stock. The district is predominantly built-out and the percentage of new homes relative to existing housing in each attendance area is one percent or less. In general, the population tends to move around between new and existing housing and vacancy rates, especially in the southeastern quadrant of town fluctuate. Gold Hill Mesa (SE corner S. 21st & Hwy. 24) is the only large development that will produce students

Gold Hill Mesa – Gold Hill Mesa will eventually include 600 possible homes. Approximately 400 are occupied on the upper mesa and grading of the lower area near the smelter stack is underway and expected to be predominantly commercial. Residents in Gold Hill Mesa have many school options and the development's website lists at least ten other school options beyond district 11 schools. District 11 student yield (students produced per house) from this development is less than .25 per house. 60 homes are under construction and the remaining units should be absorbed in 3 years. Additional student impact would be limited to 15 – 20 students per year.

Photos of Gold Hill Mesa Development

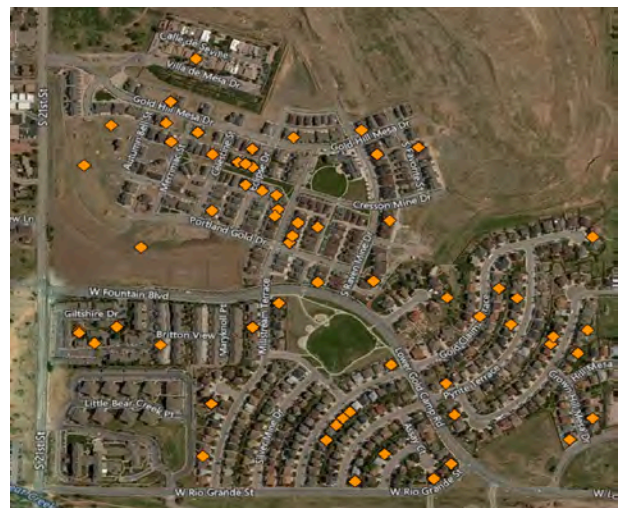




Photos of Gold Hill Mesa Development



Gold Hill Mesa Student Distribution



Housing Redevelopment and Investment – In general, the existing housing stock in District 11 is not experiencing the same level of renovation and re-vestment evident elsewhere in Front Range communities. Many existing neighborhoods between Denver and Ft. Collins have been significantly renovated and families have found existing homes attractive due to lower prices. Further, there are fewer, large-scale redevelopment projects in the community that might appeal to families. With fewer than one percent of the housing stock new each year and limited re-investment in older housing, the student yield of the existing housing stock tends to drive student populations in the district and will continue to do so for the foreseeable future.

Charter Schools - Charter schools have had a significant impact on district enrollment over time. Additional charters in District 11 and in adjacent districts should be expected over time. Specific locations may have focused effects on individual schools over time. The “Coperni 3” charter forecast for a 2019 activation with 480 students in a location at Citadel Mall will have an effect on the closest schools, but most charter schools draw students from a five- to ten-mile radius or beyond including adjacent districts.

Charter School Institute – Enrollment History and Forecast Based on Trend - State-chartered schools (Colorado Charter School Institute - CSI) in El Paso County have grown at a

rate of approximately 154 students per year during the past ten years. At least 1400 additional students could attend CSI schools during the next ten years as shown in Figure 5.

		Figure 5 – CSI Historical Enrollment										CSI Forecast										
		2007-08	2008-09	2009-10	2010-11	2011-12	2012-13	2013-14	2014-15	2015-16	2016-17	2017-18	2018-19	2019-20	2020-21	2021-22	2022-23	2023-24	2024-25	2025-26	2026-27	2027-28
CHARTER SCHOOL INSTITUTE		719	936	1096	1377	1292	1548	1719	1,682	1,721	1941	2257	2399	2541	2682	2824	2966	3108	3250	3391	3533	3675
		217	160	281	-85	256	171	-37	39	220	316											
Ten Year Average Annual Growth Rate												154										
Five Year Average Annual Growth Rate												142		5-yr Growth		709		10-yr Growth		1418		

Charter School Institute – CSI schools in District 11 are directly competing with neighborhood schools for enrollment. Figure 6 shows the CSI schools in relation to District 11 students shown as blue dots. Additional CSI charters are highly probable in the next few years given the pace of absorption of students. All charters in the area are shown in Figure 7 including those that are school district-managed.

Figure 6 – CSI Charter Schools and District 11 Students

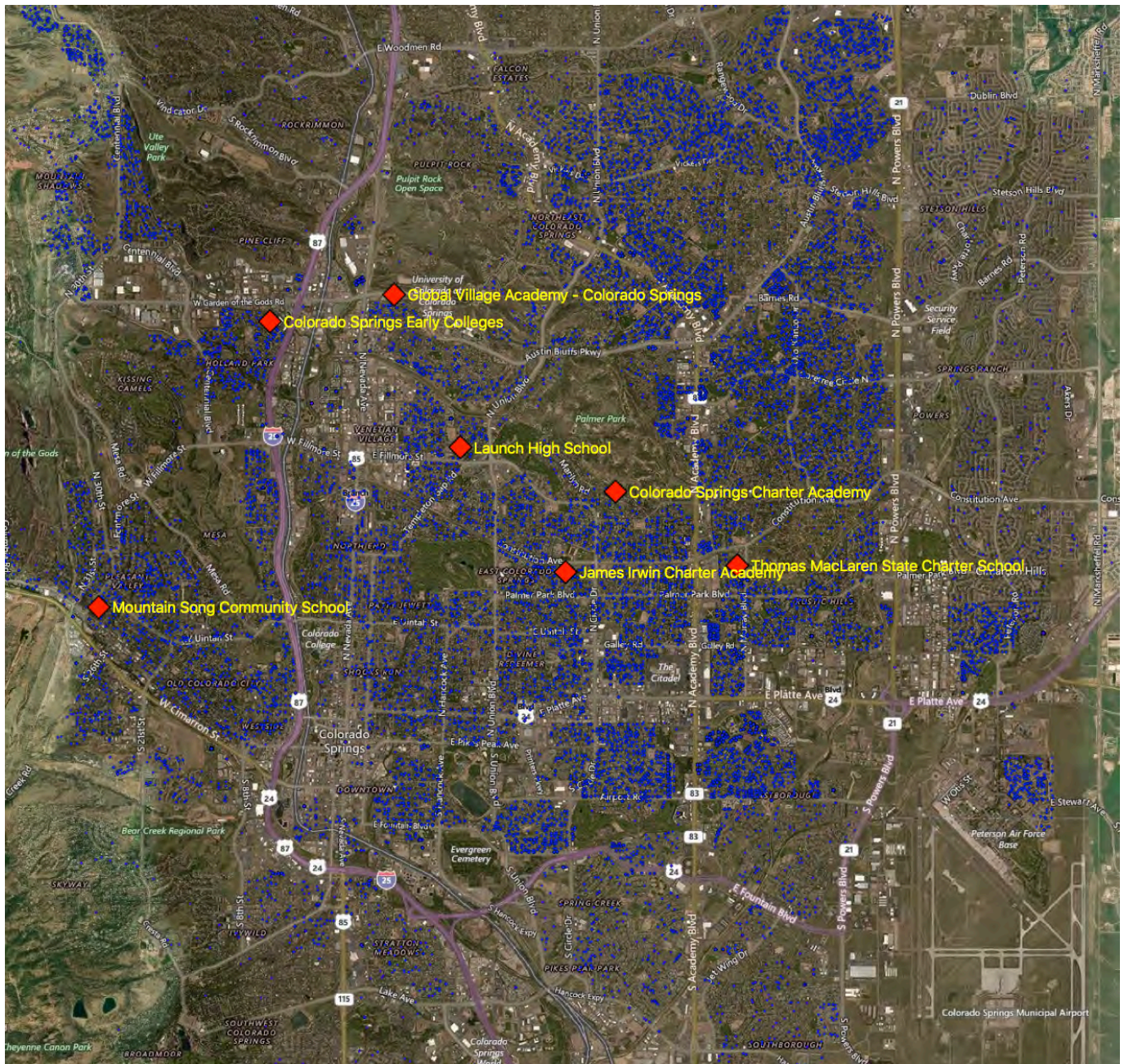
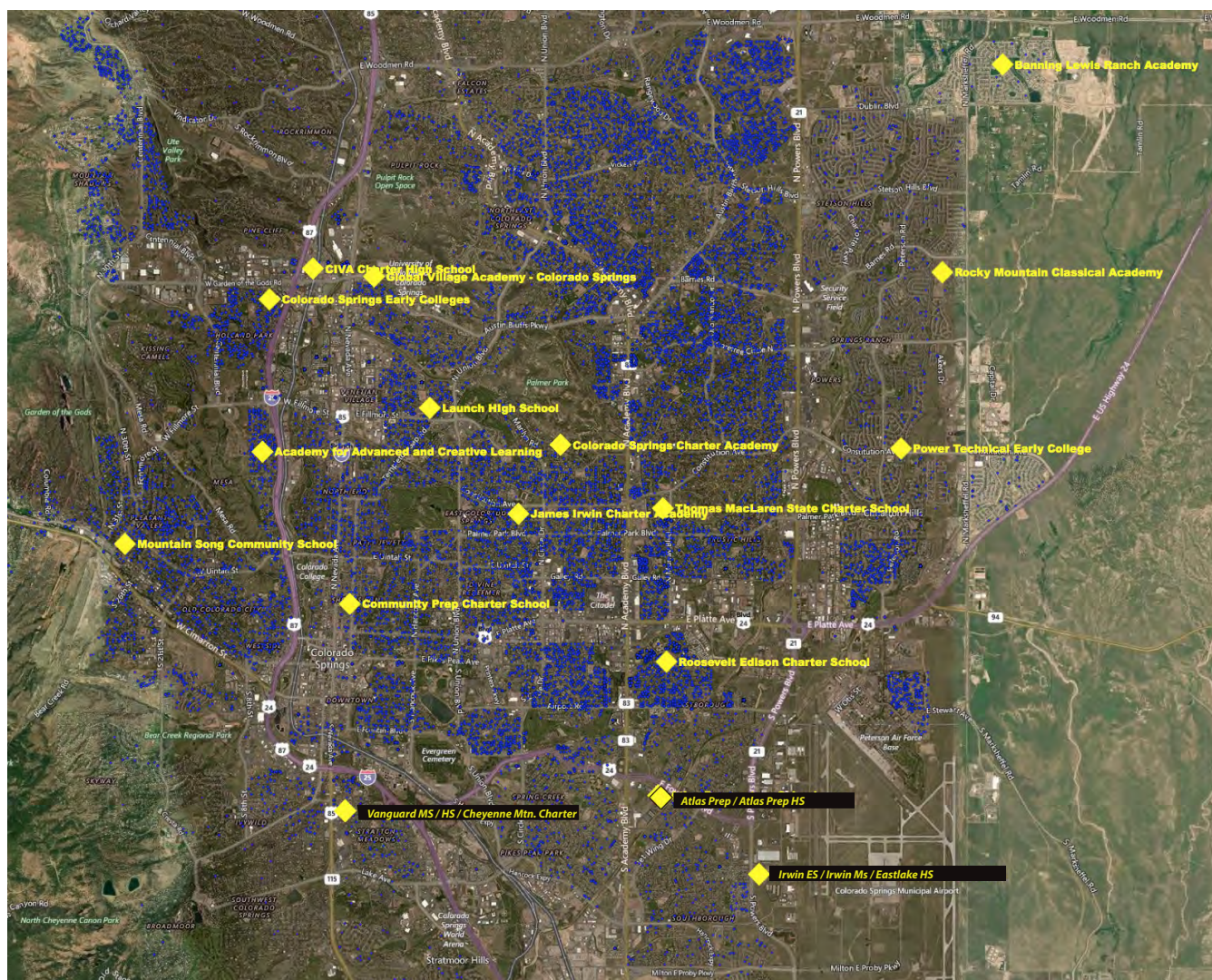


Figure 7 – Partial Map of El Paso Charter Schools and District 11 Students

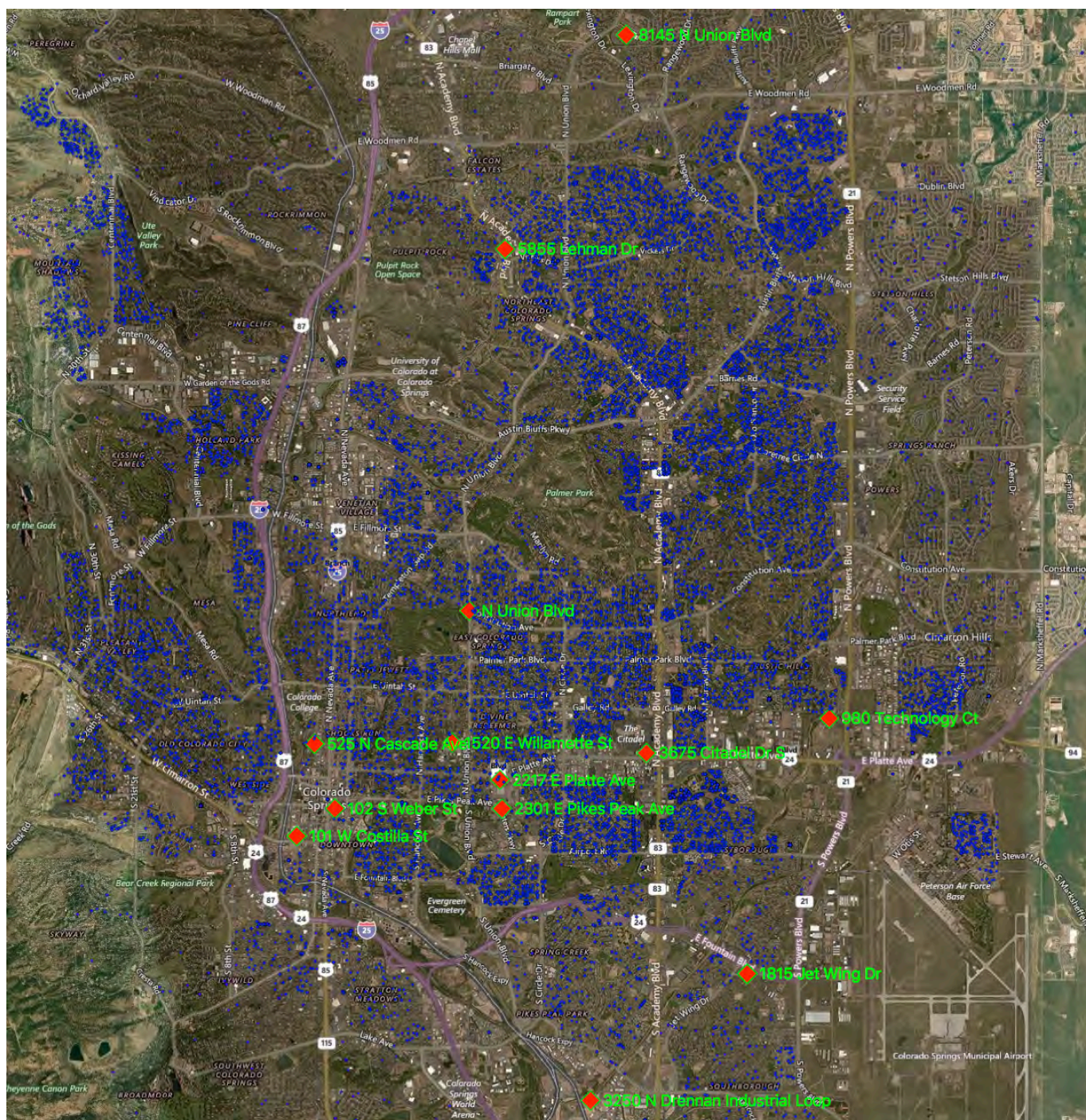


Vacant Office Buildings for Lease That are Usable for Charter School Activity - There are at least two-dozen commercial buildings in District 11 that could be retrofitted for use for a 6- to 18-classroom charter school at relatively low cost. The Zillow real estate website alone lists nine viable properties as shown in Figure 8. This indicates a strong environment in District 11 for continued growth in charter schools and therefore, additional competition.

Vacant Office Space Potentially Usable for Charter Schools



Figure 8 - Vacant Office Buildings for Lease According to Zillow



Non-public Schools – Colorado Springs District 11 – 2007 – 2017 - Non-public schools (private schools) have stabilized at approximately 3,200 students and have declined along with public school enrollment as students have left the urban core of the City of Colorado Springs. Figure 9 illustrates this trend during the past ten years. The coincident decline in non-public schools is indicative of the general movement away from the heart of the city toward the outer suburbs.

Figure 9 - Non-public School Enrollment

Year	PK	K	1	2	3	4	5	6	7	8	9	10	11	12	Total
2007	1897	348	269	245	266	217	236	253	270	227	284	262	289	283	5346
2008	1471	245	218	235	248	229	220	204	235	262	262	282	250	280	4641
2009	1393	221	174	183	206	204	188	188	195	214	244	238	253	249	4150
2010	1108	200	160	135	147	176	158	164	175	176	236	232	224	260	3551
2011	1033	185	131	157	138	157	156	174	177	193	203	238	241	220	3403
2012	1047	176	136	135	143	143	131	154	174	174	221	200	203	248	3285
2013	1251	158	146	145	147	133	142	125	155	157	196	211	198	203	3367
2014	1054	165	114	127	123	126	126	144	117	149	181	216	213	186	3030
2015	1328	176	166	130	131	148	138	132	149	136	195	188	189	204	3410
2016	1019	172	149	166	149	137	149	165	165	173	211	224	218	206	3303
2017	1240	173	132	144	140	127	117	154	142	138	187	189	178	181	3242

Home Based Education - Home schooling has declined to approximately 1,500 students in El Paso County and District 11 enrollment has had a similar decline from 739 to 471 between 2009 and 2017. Competition from charter schools and other open enrollment opportunities may be responsible for this trend. Figure 10 illustrates the trends in home-based.

Figure 10 - HOME BASED EDUCATION FALL 2009-2017									
<i>Students Who Are Home-schooled Full-time and Not Eligible For Funding</i>									
ORGANIZATION NAME	FALL 2009	FALL 2010	FALL 2011	FALL 2012	FALL 2013	FALL 2014	FALL 2015	FALL 2016	FALL 2017
HARRISON 2	65	82	77	76	85	63	77	73	81
WIDEFIELD 3	79	63	72	88	119	121	130	127	131
FOUNTAIN 8	59	74	57	49	67	112	108	103	97
COLORADO SPRINGS 11	739	722	650	621	495	559	859	530	471
CHEYENNE MOUNTAIN 12	22	38	28	33	33	37	41	35	39
MANITOU SPRINGS 14	8	11	14	24	12	21	5	7	8
ACADEMY 20	359	420	387	323	378	347	318	342	286
ELLCOTT 22	0	8	0	0	0	0	21	22	20
PEYTON 23 JT	32	31	31	48	29	23	20	28	36
HANOVER 28	0	0	0	0	6	6	8	4	2
LEWIS-PALMER 38	171	135	116	132	113	127	127	124	131
FALCON 49	368	297	231	241	57	307	510	325	174
EDISON 54 JT	2	4	5	2	7	20	11	14	7
MIAMI/YODER 60 JT	0	0	0	0	2	0	3	0	6
El Paso County Total	1904	1885	1668	1637	1403	1743	2238	1734	1489

District 11 Students Departing to Attend Other Districts and CSI Charters – This trend is referred to as the **export** and **import** of students in this report. The districts departure to adjacent districts has accelerated to approximately 600 additional students per year in recent years. These trends have consistently accelerated over time and there has been a modest off-set of approximately 2,332 students that have come to the districts from other districts.

Figure 11 - District 11 Students Departing to Attend Other Districts and CSI Charters	Export 2014-15	Export 2015-16	Export 2016-17	Export 2017-18	Import 2017-18
ACADEMY 20	2,129	2,380	2395	2446	349
CHARTER SCHOOL INSTITUTE	1,682	1,721	1941	2257	
FALCON 49	1,065	1,074	1377	1474	528
HARRISON 2	773	863	857	849	954
CHEYENNE MOUNTAIN 12	533	503	557	521	100
MANITOU SPRINGS 14	379	432	445	391	48
BYERS 32J	97	162	288	385	
COLORADO DIGITAL BOCES		139	110	140	
WIDFIELD 3	93	75	104	86	150
DURANGO 9-R			29	66	
MAPLETON 1	40	70	56	48	1
FOUNTAIN 8	84	96	81	46	96
LEWIS-PALMER 38	36	39	48	44	16
Colorado School for the Deaf and Blind	57	51	45	40	
BRANSON REORGANIZED 82	42	27	27	28	
EDISON 54 JT	14	22	21	21	
ELLCOTT 22	12	9	12	20	10
JULESBURG RE-1	35	25	18	20	
DOUGLAS COUNTY RE 1	29	9	21	11	2
WOODLAND PARK RE-2	9	13	15	11	14
PEYTON 23 JT	13	42	37	7	16
CALHAN RJ-1	2	6	1	6	7
LAS ANIMAS RE-1			6	5	
ELIZABETH C-1		7	6	4	
LITTLETON 6				3	
MONTE VISTA C-8	4	3	2	2	
ADAMS-ARAPAHOE 28J				1	
DENVER COUNTY 1		1		1	23
FREMONT RE-2		1	2	1	1
GREELEY 6		2		1	
HANOVER 28	2	2	3	1	2
PLATTE CANYON 1	1		1	1	
PUEBLO CITY 60	1			1	6
ADAMS COUNTY 14					1
BIG SANDY 100J	2	1			
CANON CITY RE-1			1		
ELBERT 200					1
ENGLEWOOD 1		1	1		
JEFFERSON COUNTY R-1	1	1	1		
MIAMI/YODER 60 JT	1				5
PARK COUNTY RE-2			1		1
POUDRE R-1	1				
PUEBLO COUNTY 70	1				1
ST VRAIN VALLEY RE 1J		3			
Total	7,138	7,780	8,509	8,938	2,332

Online Education – Online education has grown dramatically in Colorado in recent years. Many online academies are associated with small eastern plains school districts and are apparent in Colorado Department of Education reports. Probable online academies are shaded in green in Figure 11, where Byers, Digital BOCES, Durango, Mapleton, Branson and Julesburg are all unlikely commuting locations for District 11 and are likely on-line academy locations. The Byers location is especially relevant as an online destination. Online academies are part of the trend that affects long-term enrollment expectations for District 11.

Market Share - Public school market share has been calculated by collecting the total school-aged population from the American Community Survey and comparing it to the District 11 student database. Market share reflects the other education programs available to families and the percentage to which families select the local public school district vs. the total of public school plus charters, neighboring public districts and non-public (private) schools. 2016 was the latest year available and generated the percentages shown in yellow in Figure 12 below. The 2016 values of 71%, 67% and 68% for elementary, middle school and high school are considered low rates of market share for a Colorado district. Market share in 2016 has declined dramatically since 2009 when District 11 market share was in the mid 80 percent range at all three levels. The 2009 market share figures are shaded in blue in Figure 12.

Figure 12 - District 11 Public School Market Share Estimates – 10/2/18

Year	2009	2010	2011	2012	2013	2,014	2015	2,016
Estimate Source	ACS – 5yr	ACS – 5yr	ACS – 5yr	ACS – 5yr	ACS – 5yr	ACS – 5yr	ACS – 5yr	ACS – 5yr
All Age 5 – 10	15,560	17,386	16,314	16,008	16,925	16,849	17,398	18,570
All Age 11 – 13	7,336	8,462	7,246	8,821	8,943	8,674	8,573	8,548
All Age 14 – 17	10,448	11,698	11,165	12,041	13,655	12,462	12,935	12,282
Total Census	33,344	37,546	34,724	36,869	39,523	37,985	38,906	39,401

Year	2009	2010	2011	2012	2013	2,014	2015	2,016
D11 – ES – K-5	13878	13936	14071	13839	13425	13,499	13,281	13246
D11 – MS	6151	6147	6072	5956	5891	5,879	5,761	5697
D11 – HS	8913	8663	8652	8524	8398	8,298	8,239	8302
D11 Total	28942	28746	28795	28319	27714	27676	27281	27245

Year	2009	2010	2011	2012	2013	2,014	2015	2,016
ES Market Share	89.2%	80.2%	86.3%	86.5%	79.3%	80.1%	76.3%	71.3%
MS Market Share	83.9%	72.6%	83.8%	67.5%	65.9%	67.8%	67.2%	66.6%
HS Market Share	85.3%	74.1%	77.5%	70.8%	61.5%	66.6%	63.7%	67.6%

Elementary Market Share - Elementary market share is weakest on the north central and northeastern periphery of the district where students leave to attend District 20, Falcon 49 or other northern schools. Dark red indicates higher market share, while the lighter cream color is the lowest. Tabular enrollment results are shown in Figure 14.

Figure 13 – Elementary School Market Share by Attendance Area - Map

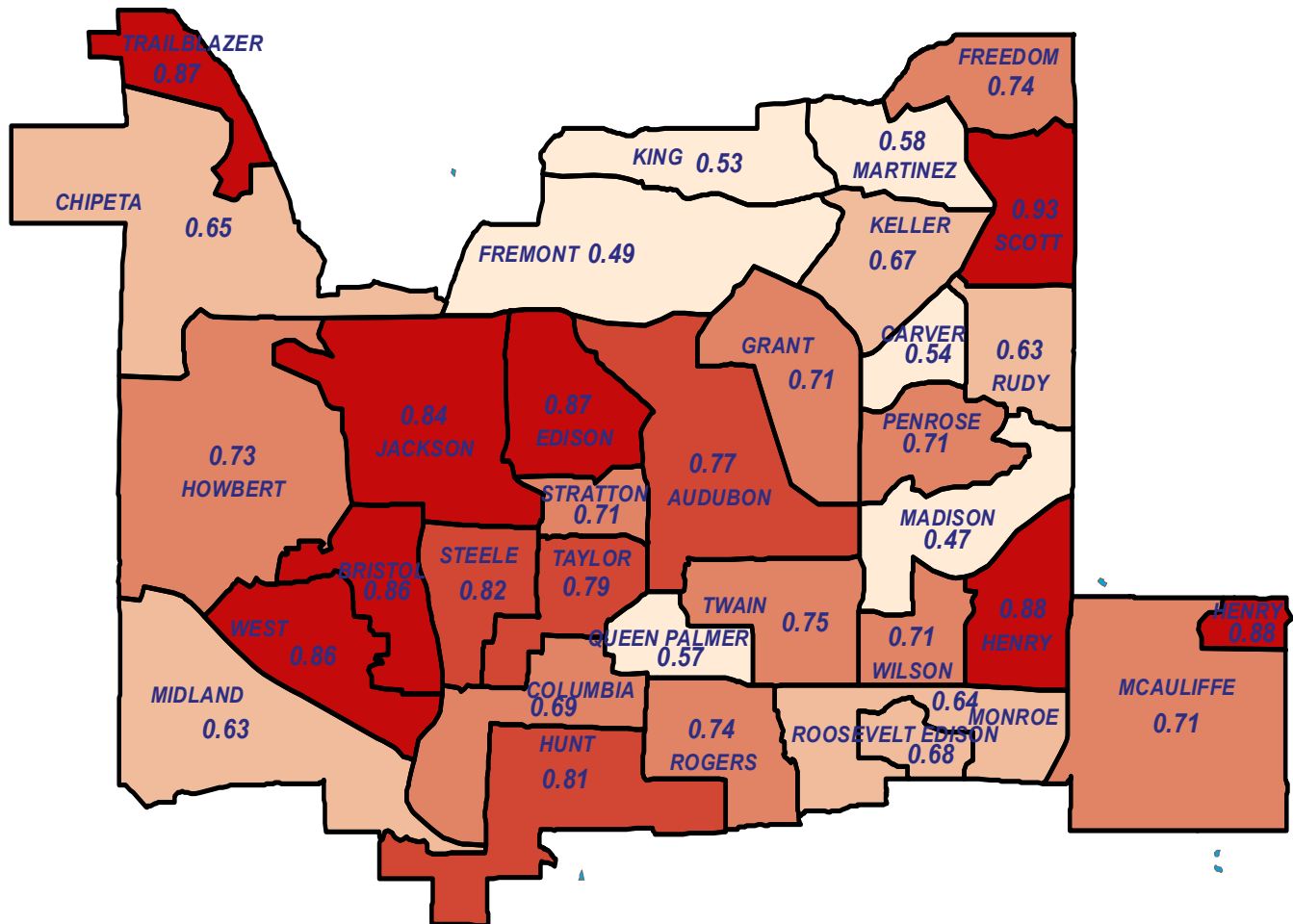


Figure 14 – Elementary School Market Share by Attendance Area - Table

School	Market Share
Audubon	0.77
Bristol	0.86
Carver	0.54
Chipeta	0.65
Columbia	0.69
Edison	0.87
Freedom	0.74
Fremont	0.49
Grant	0.71
Henry	0.88
Howbert	0.73
Hunt	0.81
Jackson	0.84
Keller	0.67
King	0.53
Madison	0.47
Martinez	0.58
Mcauliffe	0.71
Midland	0.63
Monroe	0.64
Penrose	0.71
Queen Palmer	0.57
Rogers	0.74
Roosevelt Edison	0.68
Rudy	0.63
Scott	0.93
Steele	0.82
Stratton	0.71
Taylor	0.79
Trailblazer	0.87
Twain	0.75
West	0.86
Wilson	0.71
Overall	0.71

Middle School Market Share – Middle school market share is weakest in the southwest, north central and northeastern portions of the district. Many of the students in the north central area leave to attend District 20 and students in the northeast attend Falcon 49 or other northern schools. Dark red indicates higher market share, while the lighter cream color is the lowest. Tabular enrollment results are shown in Figure 16.

Figure 15 – Middle School Market Share by Attendance Area - Map

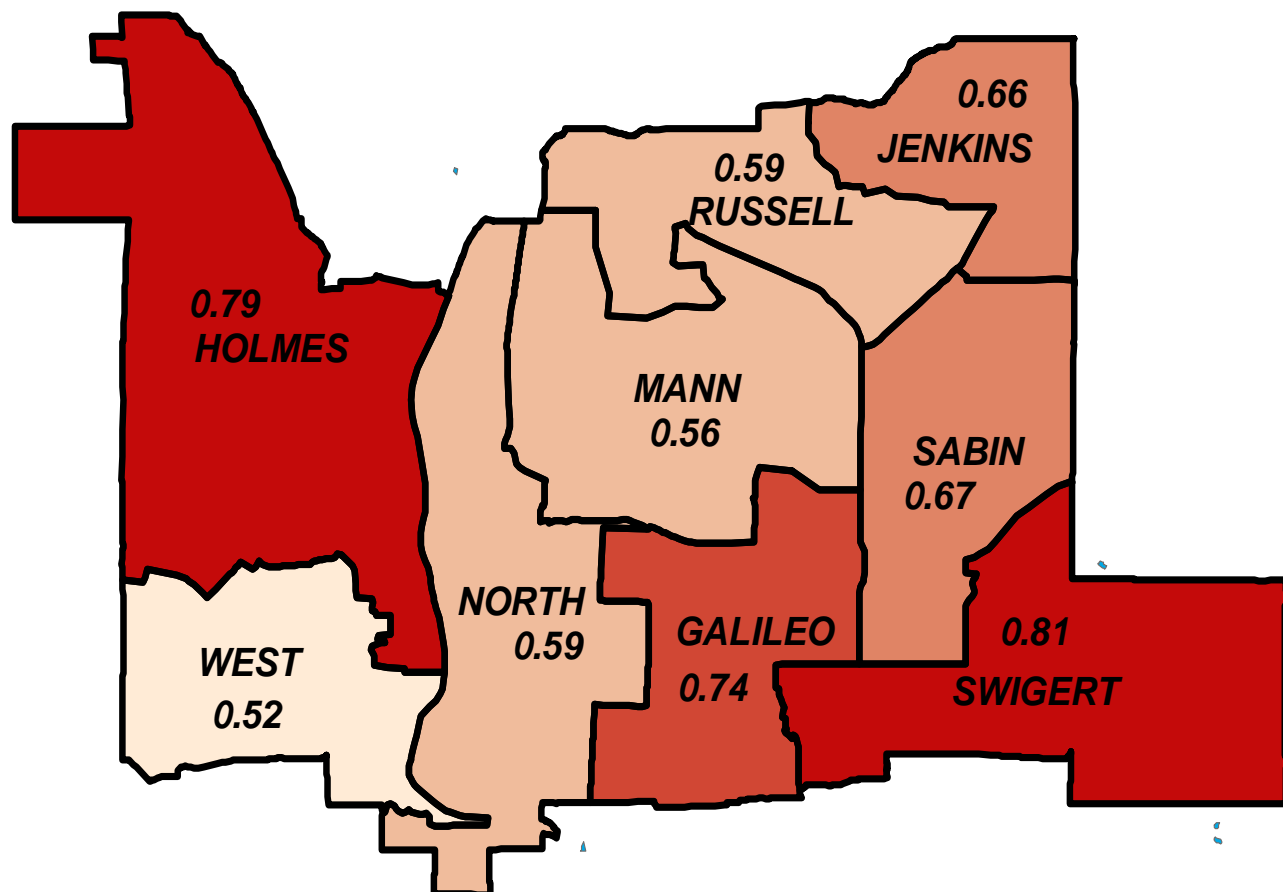


Figure 16 – Middle School Market Share by Attendance Area - Table

School	Market Share
Galileo	0.74
Holmes	0.79
Jenkins	0.66
Mann	0.56
North	0.59
Russell	0.59
Sabin	0.67
Swigert	0.81
West	0.52
Overall	0.67

High School Market Share – High school market share is weakest in the northeastern portion of the district as shown in Figure 17. Dark red indicates higher market share, while the lighter cream color is the lowest. Tabular enrollment results are shown in Figure 18.

Figure 17 – High School Market Share by Attendance Area - Map

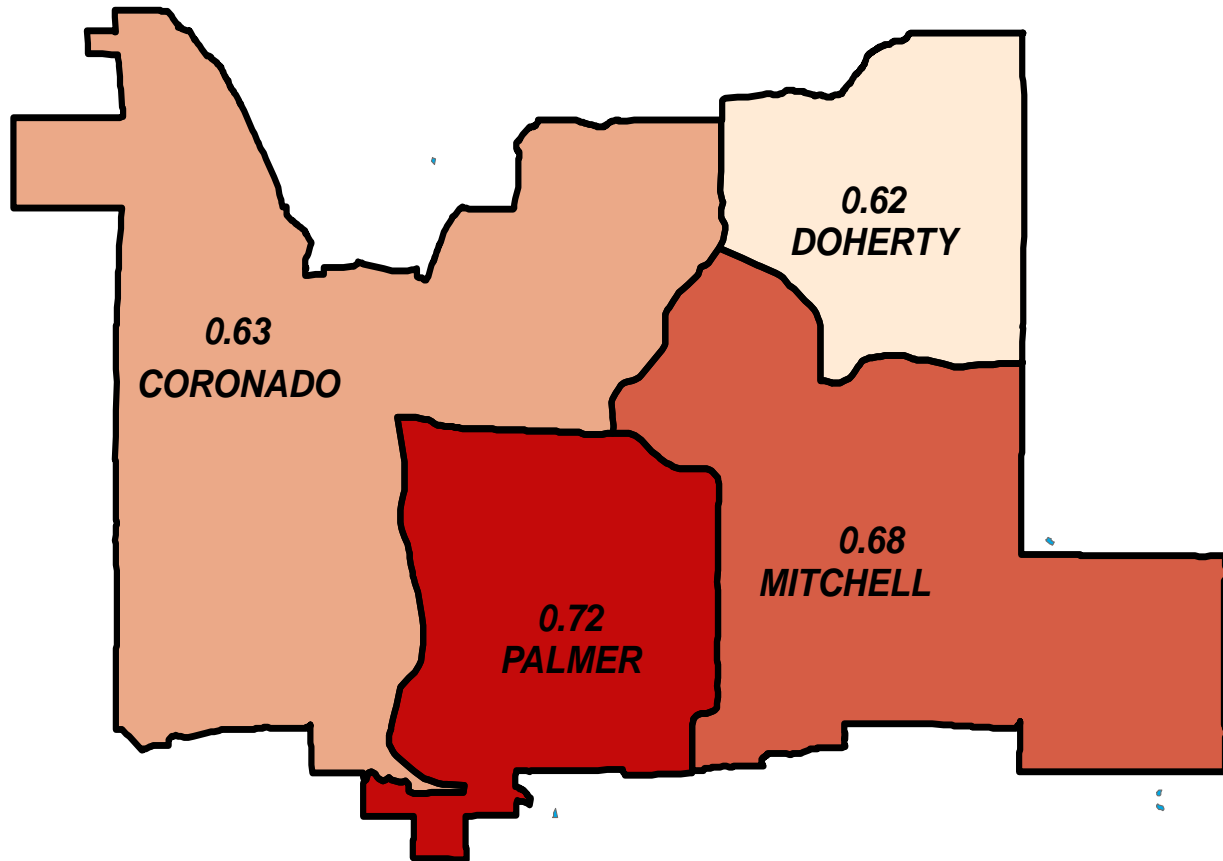


Figure 18 – High School Market Share by Attendance Area - Table

School	Market Share
Coronado	0.63
Doherty	0.68
Mitchell	0.68
Palmer	0.72
Overall	0.68

Figure 19 - Change in Attendance at Any District 11 School by Elementary Attendance Area – 2013 – 2017 - Map

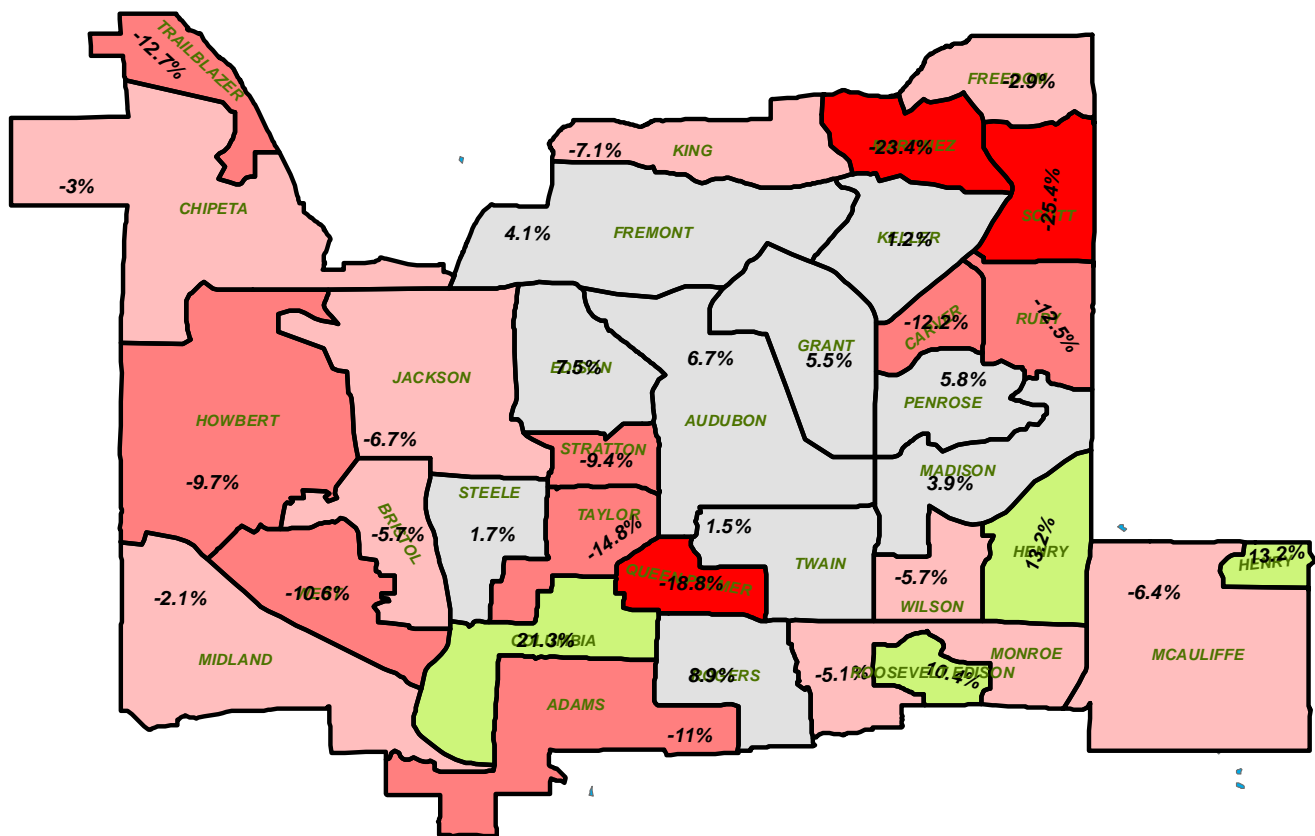


Figure 20 - Change in Attendance at Any District 11 School by Elementary Attendance Area – 2013 – 2017 - Table

Level	School	Percentage
ES	Scott Elementary School	-25.4%
ES	Martinez Elementary School	-23.4%
ES	Queen Palmer Elementary School	-18.8%
ES	Taylor Elementary School	-14.8%
ES	Trailblazer Elementary School	-12.7%
ES	Rudy Elementary School	-12.5%
ES	Carver Elementary School	-12.2%
ES	Adams Elementary School	-11.0%
ES	West Elementary School	-10.6%
ES	Howbert Elementary School	-9.7%
ES	Stratton Elementary School	-9.4%
ES	King Elementary School	-7.1%
ES	Jackson Elementary School	-6.7%
ES	McAuliffe Elementary School	-6.4%
ES	Bristol Elementary School	-5.7%
ES	Wilson Elementary School	-5.7%
ES	Monroe Elementary School	-5.1%
ES	Chipeta Elementary School	-3.0%
ES	Freedom Elementary School	-2.9%
ES	Midland Elementary School	-2.1%
ES	Keller Elementary School	1.2%
ES	Twain Elementary School	1.5%
ES	Steele Elementary School	1.7%
ES	Madison Elementary School	3.9%
ES	Fremont Elementary School	4.1%
ES	Grant Elementary School	5.5%
ES	Penrose Elementary School	5.8%
ES	Audubon Elementary School	6.7%
ES	Edison Elementary School	7.5%
ES	Rogers Elementary School	8.9%
ES	Roosevelt Charter Academy	10.4%
ES	Henry Elementary School	13.2%
ES	Columbia Elementary School	21.3%

Change in Attendance at Any District 11 School by Middle School Attendance Area – 2013 – 2017 – Figure 21 illustrates departure by middle school students by attendance area. The northeastern portion of the district has the strongest departure. Figure 22 illustrates the same phenomenon in tabular form.

Figure 21 - Change in Attendance at Any District 11 School by Middle School Attendance Area – 2013 – 2017 - Map

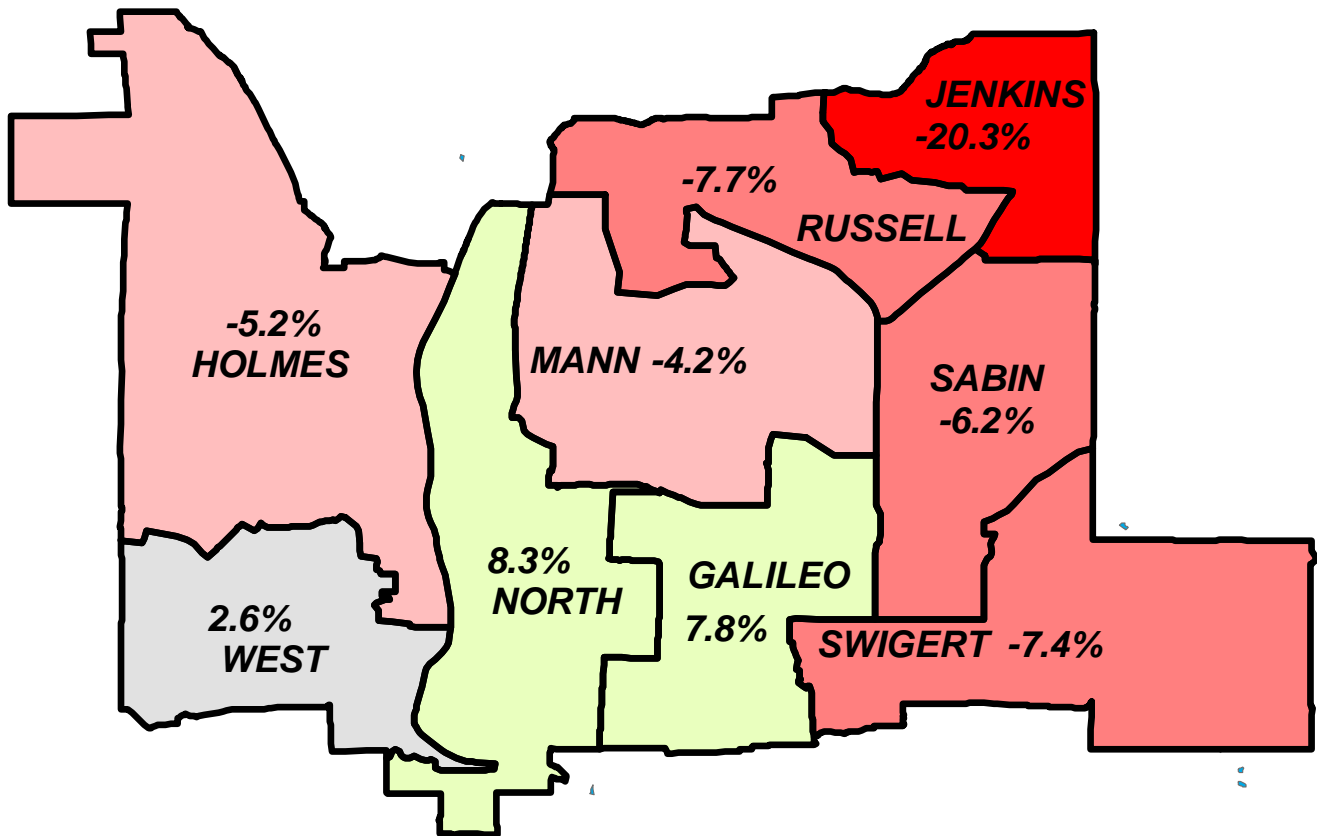


Figure 22 - Change in Attendance at Any District 11 School by Middle School Attendance Area – 2013 – 2017 - Table

Level	School	Percentage
MS	Jenkins Middle School	-20.3%
MS	Russell Middle School	-7.7%
MS	Swigert Middle School	-7.4%
MS	Sabin Middle School	-6.2%
MS	Holmes Middle School	-5.2%
MS	Mann Middle School	-4.2%
MS	West Middle School	2.6%
MS	Galileo Middle School	7.8%
MS	North Middle School	8.3%

Change in Attendance at Any District 11 School by High School Attendance Area – 2013 – 2017 – The Palmer attendance area has the most departure at the high school level when calculated geographically as indicated in Figure 23.

Figure 23 - Change in Attendance at Any District 11 School by High School Attendance Area – 2013 – 2017 – Map

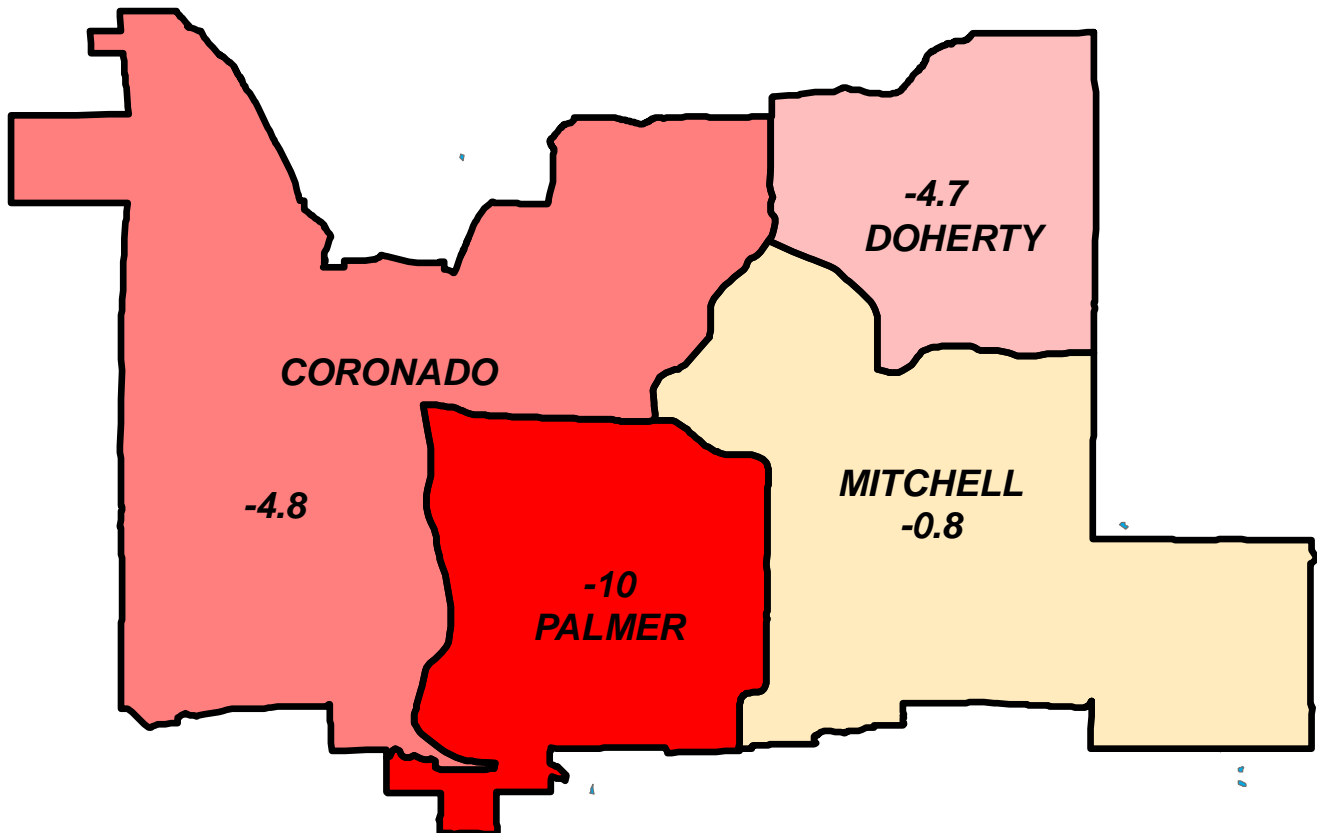


Figure 24 - Change in Attendance at Any District 11 School by High School Attendance Area – 2013 – 2017 - Table

Level	School	Percentage
HS	Palmer High School	-10.0%
HS	Coronado High School	-4.8%
HS	Doherty High School	-4.7%
HS	Mitchell High School	-0.8%

10-year Enrollment Forecast - The combination of various factors suggests that the district will continue to decline by approximately 2 – 3 percent per year. This overall forecast is interpolated into individual schools in the subsequent pages. Figure 25 indicates the 10-year overall forecast. The assumptions of the forecast are that a 3-year weighted average of historic enrollment would continue. Kindergarten expectations were developed by averaging expected in-coming enrollment based on births and the 3-year weighted decline in kindergarten.

**Figure 25 - Projections Based Upon 3-year Weighted Average Except Kindergarten
Which is a Custom Basis**
(*kinder = average expected in-coming enrollment based on births and the 3-year weighted decline*)

Year	K	1	2	3	4	5	6	7	8	9	10	11	12
2019	2075	1945	1884	1989	1979	1922	1844	1854	1957	1835	1846	1817	2286
2020	2033	1914	1852	1784	1949	1909	1715	1803	1851	1918	1849	1795	2207
2021	1997	1872	1821	1752	1744	1879	1703	1674	1800	1812	1932	1798	2185
2022	1961	1835	1779	1721	1712	1674	1672	1661	1671	1761	1826	1881	2188
2023	1924	1799	1743	1679	1681	1642	1467	1631	1659	1632	1774	1775	2271
2024	1888	1763	1707	1643	1639	1611	1436	1426	1628	1620	1646	1724	2165
2025	1851	1726	1670	1607	1603	1569	1405	1395	1423	1589	1633	1595	2114
2026	1815	1690	1634	1570	1567	1533	1363	1364	1392	1384	1603	1582	1985
2027	1779	1654	1598	1534	1530	1497	1327	1322	1361	1353	1398	1552	1972
2028	1742	1617	1561	1498	1494	1460	1290	1285	1319	1322	1366	1347	1942

Year	(K-5)	(6-8)	(9-12)	(K-12)	Pre School	Tot w Preschool	Net Growth	Percentage Growth
2019	11793	5655	7784	25232	776	26008	-589	-2.2%
2020	11441	5369	7769	24578	776	25354	-653	-2.5%
2021	11065	5176	7726	23967	776	24743	-611	-2.4%
2022	10682	5005	7655	23342	776	24118	-625	-2.5%
2023	10469	4757	7452	22678	776	23454	-664	-2.8%
2024	10251	4490	7154	21894	776	22670	-784	-3.3%
2025	10027	4222	6931	21181	776	21957	-714	-3.1%
2026	9809	4118	6555	20482	776	21258	-699	-3.2%
2027	9591	4009	6275	19875	776	20651	-607	-2.9%
2028	9373	3894	5977	19244	776	20020	-631	-3.1%

Strategies to Address Declining Enrollment – Urban school districts with declining enrollments have adopted a variety of strategies to attempt to reverse departure. Many districts have closed schools as enrollment has contracted, but have created neighborhood voids where no public schools exist in a 1- – 2-mile square area. In some cases, these districts have seen even more departure as families have looked for other options such as adjacent districts or charters when their local schools closed.

Other districts have become more competitive in order to retain enrollment and have used specialized curriculums in order to attract students from geographic areas larger than their attendance areas and districts. Effective practice includes marketing curriculum identity over school identity. Districts also implement stranding strategies to keep students in specialized curriculums as they advance from elementary to middle to high school. Specialized curriculums can include STEM, World Language, Blended Learning, Gifted, Space, Technology, IB, Core Knowledge and Others.

Effective Practice in School / Curriculum Stranding

- In Order to Retain Students Level-to-Level, Specialized Curriculums Must Matriculate Clearly from Elementary to Middle to High School Levels
- Fewer Students Depart Given These Opportunities / Guest Students are Retained
- Student Peer Relationships are Better Preserved and Become More of a Factor for Retention
- Transportation Needs Must be Addressed

Individual School Branding

- Parent Awareness of School Locations, Programs and Branding can Frequently be Stronger than District Boundary and Branding Knowledge
- Urban Districts that Focus on School Identities and Curriculum Identities are Frequently More Able to Retain Students

Conclusion – A variety of dynamics will result in District 11 continuing to decline during the next five to ten years. A declining birth rate, student departure to adjacent districts and charters and a generalized departure of families from the heart of the city in favor of the suburbs will contribute to this decline. The district is well positioned to use specialized curriculums to attract students from throughout the County and offset student decline from its neighborhood attendance area schools. It would be possible to defray 25 – 33 percent of the forecast departure through the use of competitive strategies and specialized curriculums.

Figure 26 - Elementary School Projections by Year

Year	School	PK	K	1	2	3	4	5	Tot K-5	Tot PK-5
2019	ACADEMY_ACL	0	33	34	31	26	31	38		
2020	ACADEMY_ACL	0	32	34	32	25	27	33		
2021	ACADEMY_ACL	0	32	33	32	26	25	29		
2022	ACADEMY_ACL	0	31	33	31	26	27	27		
2023	ACADEMY_ACL	0	31	32	31	25	26	29		
2019	ADAMS	27	80	76	61	74	72	72		
2020	ADAMS	27	79	76	71	62	78	70		
2021	ADAMS	27	78	74	70	72	66	76		
2022	ADAMS	27	77	73	69	71	75	63		
2023	ADAMS	27	76	72	68	69	74	73		
2019	AUDUBON	28	49	53	65	61	48	52		
2020	AUDUBON	28	48	52	49	59	58	51		
2021	AUDUBON	28	47	51	48	43	56	61		
2022	AUDUBON	28	46	51	47	43	40	59		
2023	AUDUBON	28	46	50	47	42	40	43		
2019	BRISTOL	0	35	30	41	41	39	21		
2020	BRISTOL	0	34	30	29	37	44	30		
2021	BRISTOL	0	34	30	29	26	40	35		
2022	BRISTOL	0	33	29	28	26	29	31		
2023	BRISTOL	0	33	29	28	25	28	20		
2019	BUENA VISTA	40	36	31	35	27	22	16		
2020	BUENA VISTA	40	35	31	29	28	23	18		
2021	BUENA VISTA	40	35	30	29	22	24	19		
2022	BUENA VISTA	40	34	30	28	22	19	20		
2023	BUENA VISTA	40	34	29	28	22	18	15		
2019	CARVER	0	52	35	29	53	46	49		
2020	CARVER	0	51	35	30	26	44	49		
2021	CARVER	0	50	34	30	28	18	47		
2022	CARVER	0	49	34	29	27	19	21		
2023	CARVER	0	49	33	29	27	19	22		

Elementary School Projections by Year

Year	School	PK	K	1	2	3	4	5	Tot K-5	Tot PK-5
2019	CHIPETA	29	75	72	74	81	72	70		
2020	CHIPETA	29	74	71	76	79	71	70		
2021	CHIPETA	29	73	69	75	81	70	69		

2022	CHIPETA	29	72	68	74	80	72	67		
2023	CHIPETA	29	71	67	73	79	71	69		
2019	COLUMBIA	28	42	41	48	42	43	41		
2020	COLUMBIA	28	41	41	38	43	42	44		
2021	COLUMBIA	28	40	40	38	34	43	43		
2022	COLUMBIA	28	40	39	37	33	33	44		
2023	COLUMBIA	28	39	39	36	32	33	34		
2019	EDISON	26	59	55	44	45	48	36		
2020	EDISON	26	58	54	45	40	45	40		
2021	EDISON	26	58	53	44	41	40	37		
2022	EDISON	26	57	53	44	41	41	32		
2023	EDISON	26	56	52	43	40	41	33		
2019	FREEDOM	27	76	65	78	72	60	76		
2020	FREEDOM	27	75	64	73	73	69	59		
2021	FREEDOM	27	74	63	72	68	69	67		
2022	FREEDOM	27	73	62	71	67	64	67		
2023	FREEDOM	27	72	61	70	66	63	62		
2019	FREEMONT ES	26	73	66	49	72	71	61		
2020	FREEMONT ES	26	72	65	62	49	78	67		
2021	FREEMONT ES	26	71	64	61	62	55	74		
2022	FREEMONT ES	26	70	63	60	61	67	51		
2023	FREEMONT ES	26	69	62	59	60	66	63		
2019	GLOBE	0	27	26	27	15	29	24		
2020	GLOBE	0	26	26	26	23	16	26		
2021	GLOBE	0	26	26	26	23	25	14		
2022	GLOBE	0	26	25	25	22	24	22		
2023	GLOBE	0	25	25	25	22	24	21		

Elementary School Projections by Year

Year	School	PK	K	1	2	3	4	5	Tot K-5	Tot PK-5
2019	GRANT	0	83	80	62	80	86	79		
2020	GRANT	0	83	80	75	58	83	86		
2021	GRANT	0	83	80	75	71	61	83		
2022	GRANT	0	82	79	75	71	74	62		
2023	GRANT	0	82	79	75	70	74	74		
2019	HENRY	51	49	46	50	55	47	39		
2020	HENRY	0	48	46	42	45	51	43		
2021	HENRY	0	47	45	41	37	41	47		
2022	HENRY	0	46	44	41	37	33	37		
2023	HENRY	0	46	43	40	36	33	29		
2019	HOWBERT	32	42	39	39	40	42	37		
2020	HOWBERT	32	41	38	40	35	37	41		

2021	HOWBERT	32	40	38	40	35	31	36		
2022	HOWBERT	32	40	37	39	35	32	30		
2023	HOWBERT	32	39	36	38	34	31	31		
2019	JACKSON	28	58	48	55	59	47	62		
2020	JACKSON	28	57	46	46	47	60	42		
2021	JACKSON	28	55	44	45	39	49	56		
2022	JACKSON	28	53	43	43	38	40	44		
2023	JACKSON	28	51	41	41	36	39	36		
2019	KING	28	71	63	46	47	42	53		
2020	KING	28	70	63	56	42	44	42		
2021	KING	28	69	62	55	52	39	44		
2022	KING	28	68	61	54	51	49	39		
2023	KING	28	67	60	53	50	48	48		
2019	KELLER	27	69	62	71	51	65	77		
2020	KELLER	27	68	61	62	64	51	65		
2021	KELLER	27	67	60	62	55	64	51		
2022	KELLER	27	66	59	60	54	55	63		
2023	KELLER	27	65	58	59	53	54	55		

Elementary School Projections by Year

Year	School	PK	K	1	2	3	4	5	Tot K-5	Tot PK-5
2019	MARTINEZ	30	72	72	69	60	65	67		
2020	MARTINEZ	30	71	71	71	68	60	61		
2021	MARTINEZ	30	70	69	70	70	68	56		
2022	MARTINEZ	30	69	68	69	69	70	63		
2023	MARTINEZ	30	68	67	68	68	69	65		
2019	MIDLAND	0	32	28	37	37	38	31		
2020	MIDLAND	0	31	28	28	39	37	38		
2021	MIDLAND	0	31	27	27	29	39	37		
2022	MIDLAND	0	30	27	27	29	29	39		
2023	MIDLAND	0	30	27	26	28	29	29		
2019	MONROE	29	66	66	73	70	56	52		
2020	MONROE	29	64	64	64	69	65	51		
2021	MONROE	29	62	62	63	60	64	60		
2022	MONROE	29	61	60	61	59	55	59		
2023	MONROE	29	59	58	59	57	54	50		
2019	MCAULIFFE	58	85	84	90	81	80	65		
2020	MCAULIFFE	58	82	81	84	86	80	79		
2021	MCAULIFFE	58	79	78	81	80	85	79		
2022	MCAULIFFE	58	76	75	78	78	79	84		
2023	MCAULIFFE	58	73	72	74	74	76	78		
2019	MADISON	56	50	45	37	51	45	49		

2020	MADISON	56	49	45	41	38	45	48		
2021	MADISON	56	48	44	40	41	33	48		
2022	MADISON	56	47	43	39	41	36	36		
2023	MADISON	56	47	43	39	40	36	39		
2019	PENROSE	52	62	60	63	60	74	51		
2020	PENROSE	52	61	59	58	60	58	72		
2021	PENROSE	52	61	58	57	55	58	56		
2022	PENROSE	52	60	57	56	54	53	56		
2023	PENROSE	52	59	56	55	53	52	50		

Elementary School Projections by Year

Year	School	PK	K	1	2	3	4	5	Tot K-5	Tot PK-5
------	--------	----	---	---	---	---	---	---	---------	----------

2019	QUEEN_PALMER	0	47	42	27	39	32	34		
2020	QUEEN_PALMER	0	46	41	34	23	38	28		
2021	QUEEN_PALMER	0	45	41	33	30	22	34		
2022	QUEEN_PALMER	0	45	40	33	30	29	18		
2023	QUEEN_PALMER	0	44	39	32	29	28	25		
2019	ROGERS	28	69	59	45	48	67	46		
2020	ROGERS	28	67	57	55	40	48	63		
2021	ROGERS	28	65	55	53	50	40	44		
2022	ROGERS	28	63	53	51	48	50	36		
2023	ROGERS	28	62	52	49	46	48	46		
2019	ROOSEVELT_EDISON	0	101	96	96	111	114	112		
2020	ROOSEVELT_EDISON	0	99	95	97	91	110	103		
2021	ROOSEVELT_EDISON	0	98	93	96	93	91	99		
2022	ROOSEVELT_EDISON	0	97	92	94	91	92	80		
2023	ROOSEVELT_EDISON	0	95	90	93	90	91	81		
2019	RUDY	26	56	50	34	51	45	49		
2020	RUDY	26	54	48	40	31	50	45		
2021	RUDY	26	52	46	38	37	31	50		
2022	RUDY	26	50	44	36	35	37	31		
2023	RUDY	26	48	42	35	33	35	36		
2019	SCOTT	35	89	90	97	100	98	103		
2020	SCOTT	35	88	89	89	95	105	98		
2021	SCOTT	35	87	87	88	88	100	105		
2022	SCOTT	35	85	86	87	86	93	101		
2023	SCOTT	35	84	84	85	85	91	93		
2019	STEELE	0	52	51	43	39	49	50		
2020	STEELE	0	52	51	45	40	38	49		
2021	STEELE	0	51	51	45	43	40	38		
2022	STEELE	0	51	50	45	43	42	40		
2023	STEELE	0	51	50	45	42	42	42		

Elementary School Projections by Year

Year	School	PK	K	1	2	3	4	5	Tot K-5	Tot PK-5
2019	STRATTON	27	45	49	47	56	52	53		
2020	STRATTON	27	44	48	48	59	55	49		
2021	STRATTON	27	43	48	47	59	58	52		
2022	STRATTON	27	43	47	46	59	58	55		
2023	STRATTON	27	42	46	46	57	58	55		
2019	TAYLOR	0	27	26	37	39	41	46		
2020	TAYLOR	0	26	26	26	36	38	41		
2021	TAYLOR	0	26	26	26	26	36	38		
2022	TAYLOR	0	26	25	26	26	26	36		
2023	TAYLOR	0	25	25	25	25	25	26		
2019	TRAILBLAZER	8	47	46	43	57	57	49		
2020	TRAILBLAZER	8	46	46	46	42	57	57		
2021	TRAILBLAZER	8	45	45	45	45	42	57		
2022	TRAILBLAZER	8	45	44	44	44	45	42		
2023	TRAILBLAZER	8	44	43	44	44	44	45		
2019	TWAIN	30	59	54	53	60	60	71		
2020	TWAIN	30	57	51	47	45	60	60		
2021	TWAIN	30	54	49	44	39	45	60		
2022	TWAIN	30	51	46	42	37	39	45		
2023	TWAIN	30	49	43	39	34	37	39		
2019	WEST_ES	0	34	33	34	35	37	44		
2020	WEST_ES	0	33	33	33	33	35	37		
2021	WEST_ES	0	33	32	33	33	33	34		
2022	WEST_ES	0	32	32	32	32	32	33		
2023	WEST_ES	0	32	31	32	32	32	32		
2019	WILSON	0	74	70	53	53	57	46		
2020	WILSON	0	71	67	64	50	46	55		
2021	WILSON	0	68	64	62	61	43	44		
2022	WILSON	0	65	61	59	59	54	41		
2023	WILSON	0	63	58	56	56	52	52		

Figure 28 - Middle School Projections by Year

Year	School	6	7	8	Total
------	--------	---	---	---	-------

2019	ACADEMY_ACL	36	39	30	106
2020	ACADEMY_ACL	36	40	38	114
2021	ACADEMY_ACL	31	39	39	109
2022	ACADEMY_ACL	27	34	38	99
2023	ACADEMY_ACL	25	30	33	89
2019	ACHIEVE_ONLINE	8	13	30	51
2020	ACHIEVE_ONLINE	8	13	29	50
2021	ACHIEVE_ONLINE	8	13	29	49
2022	ACHIEVE_ONLINE	8	13	28	49
2023	ACHIEVE_ONLINE	8	13	28	48
2019	GALILEO	167	166	164	497
2020	GALILEO	168	166	158	493
2021	GALILEO	176	169	158	504
2022	GALILEO	166	177	161	504
2023	GALILEO	140	165	169	475
2019	GLOBE	15	0	0	15
2020	GLOBE	24	0	0	24
2021	GLOBE	25	0	0	25
2022	GLOBE	13	0	0	13
2023	GLOBE	21	0	0	21
2019	HOLMES	213	203	232	648
2020	HOLMES	187	203	196	586
2021	HOLMES	204	178	196	578
2022	HOLMES	210	195	171	576
2023	HOLMES	164	200	188	552
2019	SWIGERT	190	231	211	632
2020	SWIGERT	166	190	246	601
2021	SWIGERT	161	167	203	531
2022	SWIGERT	152	162	180	494
2023	SWIGERT	125	152	176	452

Middle School Projections by Year

Year	School	6	7	8	Total
2019	JENKINS	271	316	345	932
2020	JENKINS	281	274	322	878
2021	JENKINS	251	286	281	818
2022	JENKINS	262	256	292	809
2023	JENKINS	244	264	262	771
2019	MANN	142	128	163	270
2020	MANN	133	144	117	276
2021	MANN	146	135	132	282
2022	MANN	164	149	124	313
2023	MANN	132	166	138	298
2019	NORTH	234	245	222	701

2020	NORTH	221	236	241	697
2021	NORTH	210	224	231	666
2022	NORTH	210	213	220	643
2023	NORTH	195	211	209	616
2019	RUSSELL	199	209	201	608
2020	RUSSELL	191	197	206	594
2021	RUSSELL	164	190	194	548
2022	RUSSELL	157	163	187	507
2023	RUSSELL	164	154	160	478
2019	SABIN	276	218	254	748
2020	SABIN	215	245	214	674
2021	SABIN	243	186	241	670
2022	SABIN	227	214	182	623
2023	SABIN	177	197	211	584
2019	WEST	93	79	102	274
2020	WEST	84	90	82	256
2021	WEST	82	81	93	256
2022	WEST	76	80	84	240
2023	WEST	70	73	82	226
2019	EXTENDED_LEARNING	1	6	3	10
2020	EXTENDED_LEARNING	1	6	3	10
2021	EXTENDED_LEARNING	1	6	3	10
2022	EXTENDED_LEARNING	1	6	3	10
2023	EXTENDED_LEARNING	1	6	3	10

Figure 29 - High School Projections by Year

Year	School	9	10	11	12	Total
2019	ACHIEVE_ONLINE	19	45	61	87	212
2020	ACHIEVE_ONLINE	20	45	60	87	213
2021	ACHIEVE_ONLINE	19	46	60	87	213
2022	ACHIEVE_ONLINE	19	45	61	87	212
2023	ACHIEVE_ONLINE	19	45	60	88	211
2019	CIVA	43	64	47	46	201
2020	CIVA	43	55	65	45	208
2021	CIVA	42	55	55	63	216
2022	CIVA	42	55	55	53	206
2023	CIVA	42	55	55	53	205
2019	COMMUNITY_PREP	7	28	54	111	200
2020	COMMUNITY_PREP	7	28	52	113	200
2021	COMMUNITY_PREP	7	28	52	113	199
2022	COMMUNITY_PREP	7	28	52	112	199
2023	COMMUNITY_PREP	7	27	52	112	198
2019	CORONADO	357	350	289	335	1331
2020	CORONADO	373	348	301	277	1299
2021	CORONADO	303	364	299	290	1255

2022	CORONADO	313	292	315	288	1208
2023	CORONADO	270	303	242	304	1119
2019	DOHERTY	516	507	511	529	2064
2020	DOHERTY	543	493	460	523	2019
2021	DOHERTY	509	519	445	468	1941
2022	DOHERTY	477	485	472	453	1888
2023	DOHERTY	464	453	438	481	1836
2019	EC_EASTLAKE	1	15	46	235	297
2020	EC_EASTLAKE	1	15	47	238	301
2021	EC_EASTLAKE	1	15	46	241	304
2022	EC_EASTLAKE	1	15	46	240	303
2023	EC_EASTLAKE	1	15	46	239	301

High School Projections by Year

Year	School	9	10	11	12	Total
2019	ODYSSEY_ECCO	100	87	63	54	303
2020	ODYSSEY_ECCO	104	92	86	86	369
2021	ODYSSEY_ECCO	109	97	91	111	408
2022	ODYSSEY_ECCO	113	102	96	116	427
2023	ODYSSEY_ECCO	117	106	101	121	445
2019	EXTENDED_LEARNING	6	11	9	14	41
2020	EXTENDED_LEARNING	6	11	10	14	41
2021	EXTENDED_LEARNING	6	11	9	15	41
2022	EXTENDED_LEARNING	6	11	9	15	41
2023	EXTENDED_LEARNING	6	11	9	14	41
2019	MITCHELL	321	297	333	366	1316
2020	MITCHELL	356	328	292	352	1328
2021	MITCHELL	350	363	324	308	1346
2022	MITCHELL	326	358	360	343	1386
2023	MITCHELL	267	333	355	380	1335
2019	TESLA	22	28	44	78	171
2020	TESLA	22	28	44	79	173
2021	TESLA	22	28	44	80	173
2022	TESLA	22	28	44	79	173
2023	TESLA	22	27	44	79	172
2019	PALMER	439	411	352	381	1583
2020	PALMER	439	404	369	342	1553
2021	PALMER	440	403	362	359	1564
2022	PALMER	431	405	361	351	1547
2023	PALMER	414	396	363	350	1523
2019	SPED_BUILDING	4	2	3	9	18
2020	SPED_BUILDING	4	2	3	9	18
2021	SPED_BUILDING	4	2	3	9	18
2022	SPED_BUILDING	4	2	3	9	18

2023	SPED_BUILDING	4	2	3	9	18
2019	SPRINGS_COMMUNITY_NIGHT_SCH	0	0	6	40	47
2020	SPRINGS_COMMUNITY_NIGHT_SCH	0	0	6	41	47
2021	SPRINGS_COMMUNITY_NIGHT_SCH	0	0	6	41	48
2022	SPRINGS_COMMUNITY_NIGHT_SCH	0	0	6	41	48
2023	SPRINGS_COMMUNITY_NIGHT_SCH	0	0	6	41	47