



▶ **TRUSTEE AREA  
PROCESS**

FREMONT UNION HIGH SCHOOL DISTRICT  
BOARD OF TRUSTEES

**AUGUST 22, 2023**



**COOPERATIVE  
STRATEGIES**  
ASSESS • PLAN • FUND • BUILD

▶ BACKGROUND

**WHAT IS THE CALIFORNIA VOTING RIGHTS ACT (“CVRA”)?**

“An at-large method of election may not be imposed or applied in a manner that impairs the ability of a protected class to elect candidates of its choice or its ability to influence the outcome of an election, as a result of the dilution or the abridgment of the rights of voters who are members of a protected class....”

(Elec. Code, § 14027)

- Took effect January 1, 2003.

## ▶ TYPES OF ELECTIONS

### AT-LARGE ELECTIONS

Candidates must reside within the District's boundaries and are elected by all the voters who reside in the District's boundaries (Education Code Section 5030(a)). This is the method of election currently used by Fremont Union High School District ("FUHSD").

### FROM-TRUSTEE AREA ELECTIONS

Candidates must reside in specific geographic areas within the District's boundaries called "Trustee Areas" but are elected by all the voters who reside in the District's boundaries (Education Code Section 5030(c)). This is treated as an at-large election system under the CVRA.

### BY-TRUSTEE AREA ELECTIONS

Candidates must reside in specific Trustee Areas within the District's boundaries and are elected only by the voters who reside in the same Trustee Areas (Education Code Section 5030(b)). ***This method of election is the only method that is safe from challenge under the California Voting Rights Act.***

## ▶ TRUSTEE AREA PROCESS TIMELINE

DATE	ACTIVITY
<b>August 22, 2023</b>	<b>Board Meeting: First Pre-Map Public Hearing and Presentation</b>
<b>September 19, 2023</b>	<b>Board Meeting: Second Pre-Map Public Hearing and Presentation</b>
September 20, 2023 – TBD	Preparation of draft Trustee Area Scenarios
<b>TBD</b>	<b>Board Meeting: First Public Hearing on Trustee Area Scenarios</b>
<b>TBD</b>	<b>Board Meeting: Second Public Hearing on Trustee Area Scenarios</b>
<b>TBD (If Necessary)</b>	<b>Board Meeting: Third Public Hearing on Trustee Area Scenarios Board Selection of Trustee Area Map Board Consideration of Change in Election Method</b>
TBD	County Committee on School District Organization Holds a Public Hearing and Considers Approval of Change in Election Method and Trustee Area Map
TBD	Cooperative Strategies sends Final Trustee Area Map to the County Registrar of Voters
November 8, 2024	First Election Held Utilizing Trustee Areas

\* Legally required process, Board may provide additional opportunities for public input.

## ▶ CONSIDERATIONS IN VOTING AREAS



Each area shall contain nearly equal number of inhabitants



Follow man-made and natural geographic features, as much as possible



Drawn to comply with the Federal Voting Rights Act



Respect incumbency, if possible



Compact and contiguous, as much as possible



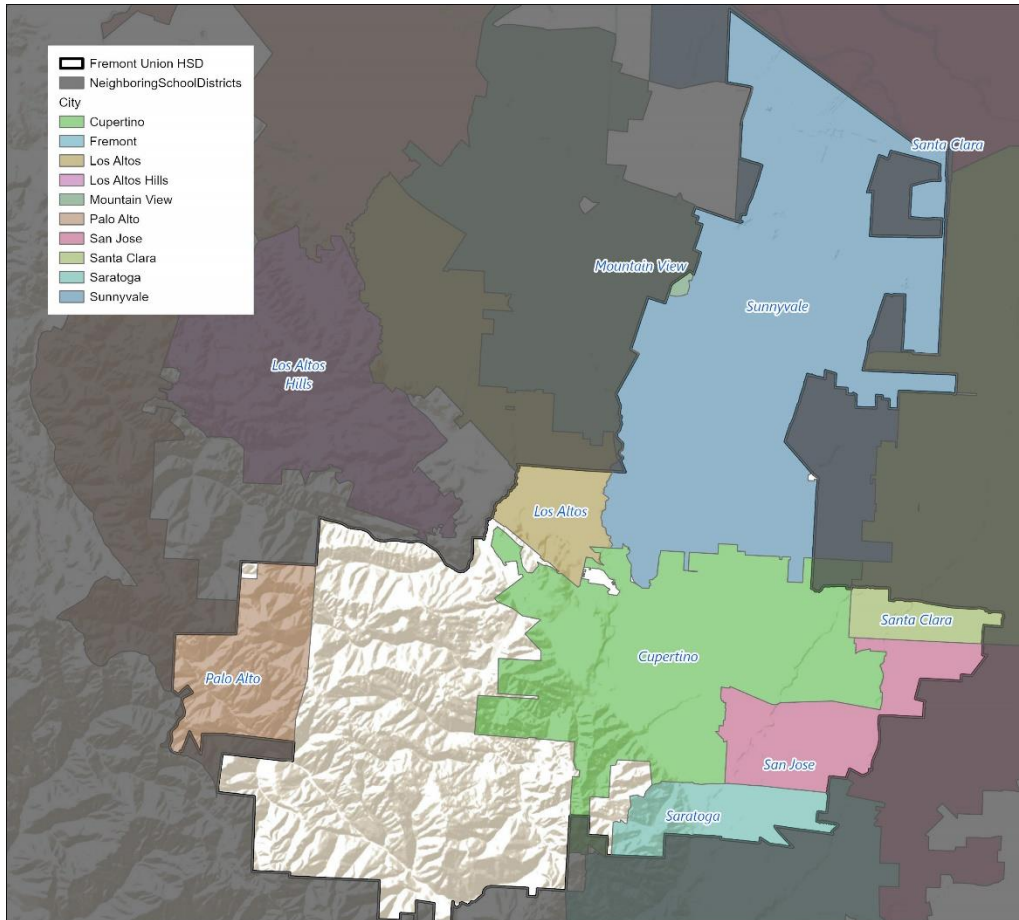
Other local considerations



Respect communities of interest, as much as possible

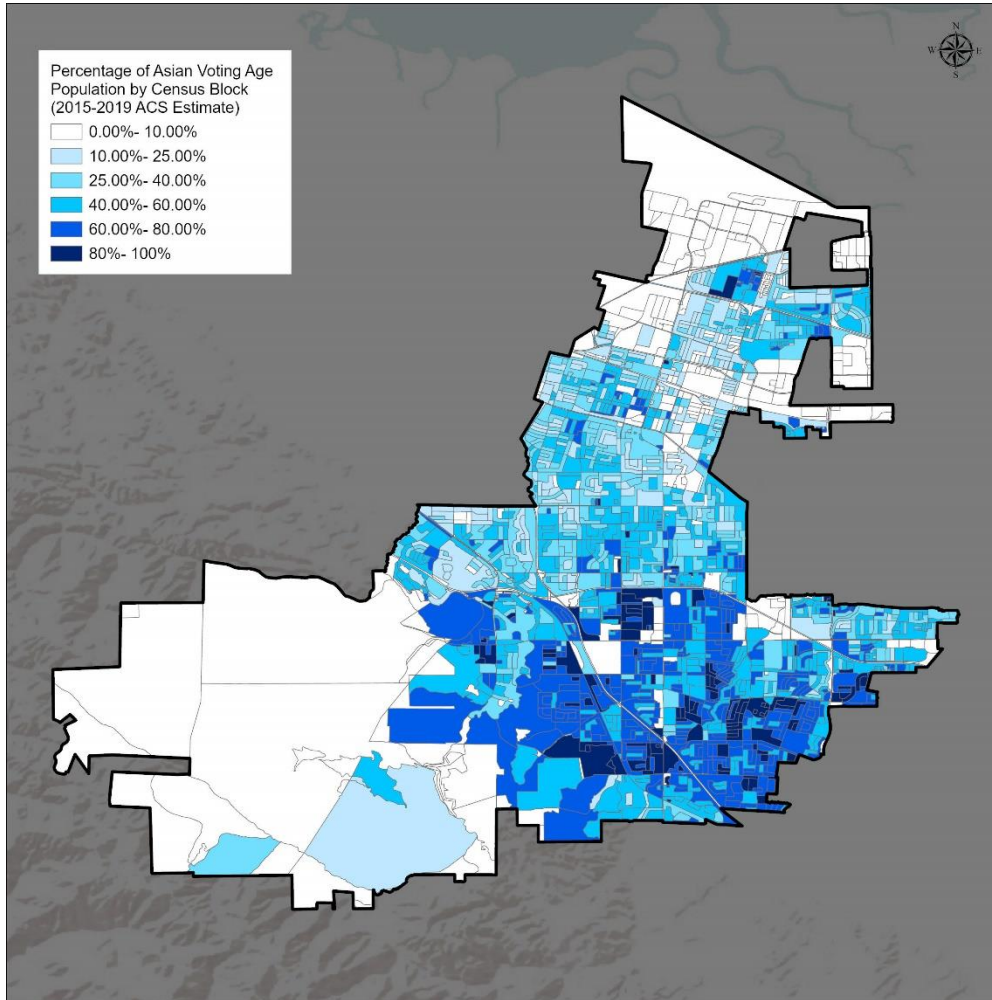
# ▶ DISTRICT DEMOGRAPHICS

## 2020 CENSUS DATA



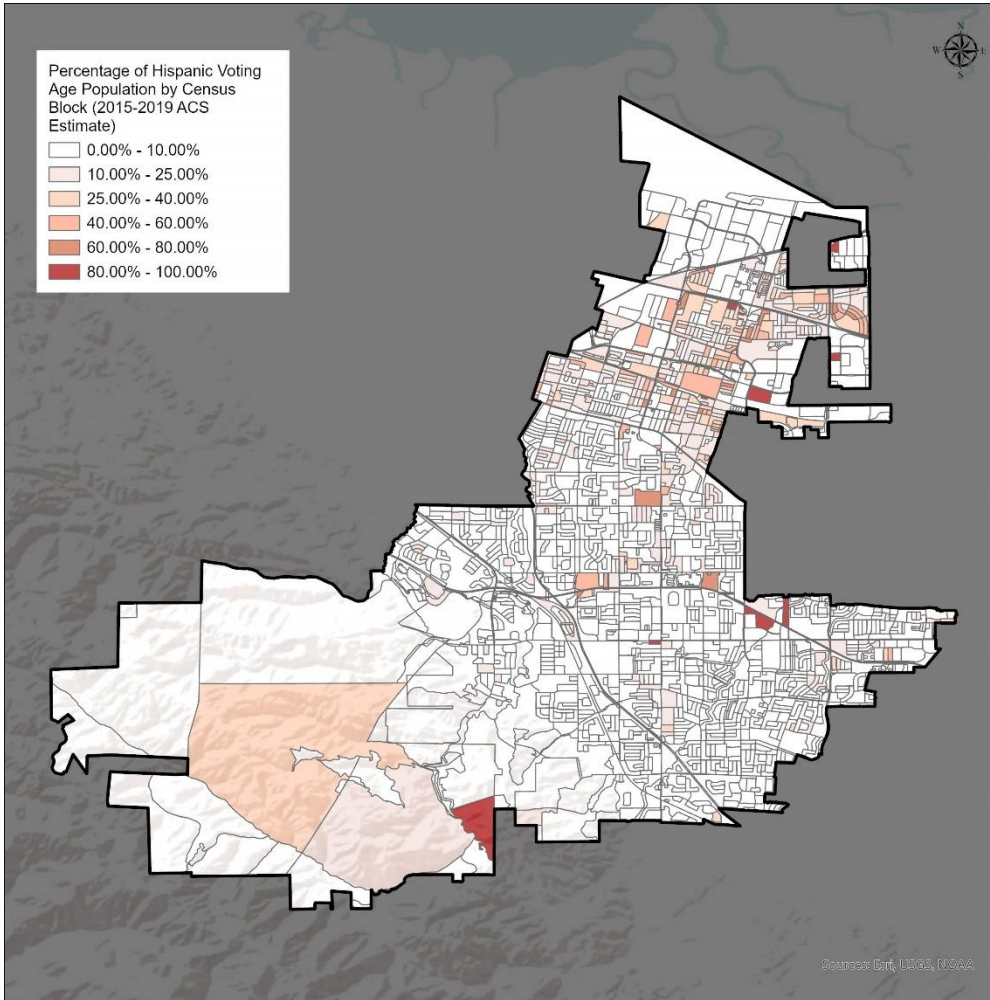
Population	Total Population		Age 18 +	
	Total	%	Total	%
Hispanic/Latino	26,326	10.9%	19,554	10.4%
White	60,823	25.3%	51,831	27.6%
Black/ African American	2,603	1.1%	2,142	1.1%
American Indian/Alaska Native	226	0.1%	137	0.1%
Asian	140,451	58.4%	108,126	57.6%
Native Hawaiian/ Pacific Islander	463	0.2%	371	0.2%
Other	1,163	0.5%	845	0.4%
Two or More Races	8,600	3.6%	4,872	2.6%
<b>Total Population</b>	<b>240,655</b>	<b>100%</b>	<b>187,878</b>	<b>100%</b>

▶ DISTRICT DEMOGRAPHICS  
**ASIAN CITIZEN VOTING AGE POPULATION ESTIMATES**



CVAP	2017-2021	
	Total	%
Hispanic/Latino	13,746	11.0%
White	47,525	37.9%
Black/ African American	2,286	1.8%
American Indian/Alaska Native	308	0.2%
Asian	58,037	46.3%
Native Hawaiian/ Pacific Islander	368	0.3%
Two or More Races	3,166	2.5%
<b>Total Population</b>	<b>125,436</b>	<b>100%</b>

► DISTRICT DEMOGRAPHICS  
**HISPANIC CITIZEN VOTING AGE POPULATION ESTIMATES**



CVAP	2017-2021	
	Total	%
Hispanic/Latino	13,746	11.0%
White	47,525	37.9%
Black/ African American	2,286	1.8%
American Indian/Alaska Native	308	0.2%
Asian	58,037	46.3%
Native Hawaiian/ Pacific Islander	368	0.3%
Two or More Races	3,166	2.5%
<b>Total Population</b>	<b>125,436</b>	<b>100%</b>





▶ PRE-MAP PUBLIC HEARING  
EXAMPLES OF FEEDBACK FOR MAPPING PROCESS

***I think:***

- **Norman Mineta Highway...**
- **Bayshore Freeway...**
- **Interstate 280....**

***... may make sense as a trustee area boundary because ...***

- **It keeps communities together**
- **It provides good representation**



QUESTIONS

A row of yellow school buses is parked in a grassy field under a cloudy sky. The buses are arranged in a line, and the word "SCHOOL BUSES" is visible on the side of one of them. The scene is captured in a slightly desaturated, dark tone, with a large, semi-transparent, stylized letter 'S' graphic overlaid in the center. The word "QUESTIONS" is written in white, bold, uppercase letters across the middle of the 'S'.