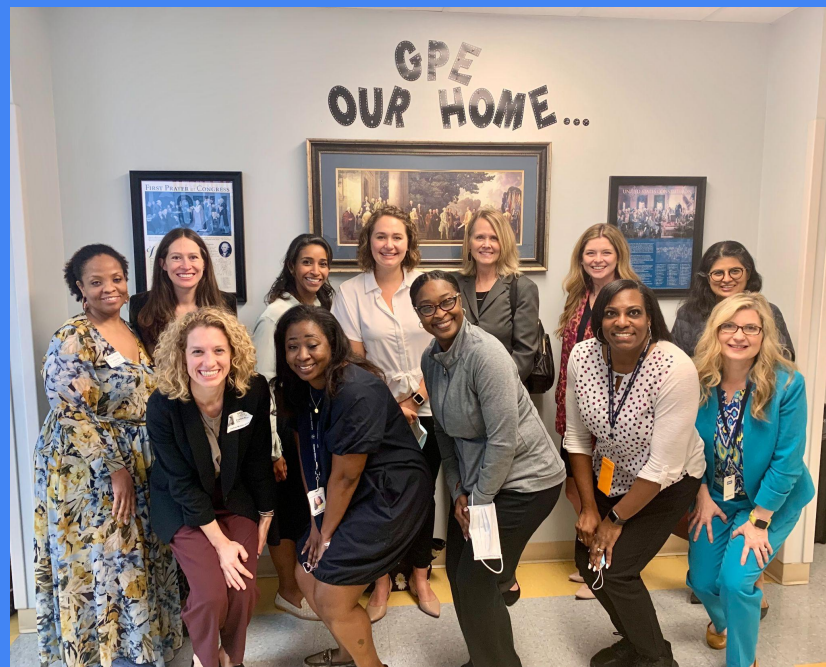




Upcoming and Ongoing *Acceleration*

Presented by: Katherine Stover, EdD





Strategic Planning and RSSP



Accelerated Learning Strategies in TCLAS

Accelerated Learning Strategies

Strategic Planning



Strategic planning and performance management to prioritize, launch, and continuously improve learning acceleration strategies

Instructional Materials



Rigorous, **high-quality instructional materials** designed to make up ground and master grade level TEKS

Teacher Pipelines



Talent pipelines that support teachers to deliver excellence in the classroom, getting more than 1 year of growth in 1 year

More Time



More time for the students most in need, including expanding instructional time in the summer and with targeted **tutoring**

Innovative School Models



Innovative school models to incorporate all aspects of the learning acceleration framework

RSSP provides strategic planning and ongoing continuous improvement support to help LEA leadership drive outcomes through research-based learning acceleration strategies

As an RSSP LEA you will receive 1-on-1 coaching and supports...



Prioritize district-wide learning acceleration strategies using data and stakeholder input



Develop strategic district-wide learning acceleration plan
(e.g., academic strategy, teacher and leader development, operations)



Provide ongoing project, stakeholder, and change management support



Run data-driven continuous improvement cycles to learn and iterate over the course of SY22-23 and SY23-24



Opt-in campus-level implementation supports, cohort PD, and LEA-LEA networking opportunities

...across a broad range of support areas tailored to meet your district needs



Instructional
Support &
Coaching



Instructional
Material



Additional Time



High impact Tutoring



Strategic Staffing

Note: Not exhaustive



Targeted Interventions High Impact Tutoring



Learning Acceleration: Strategies

Foundational Strategies	
ESF Level 4	Ensure that All Students Have Access to High-Quality Instructional Materials <ul style="list-style-type: none"><input type="checkbox"/> Full coverage of TEKS and ELPS<input type="checkbox"/> At an appropriate level of rigor and complexity and designed to facilitate deep knowledge acquisition
	Prioritize Essential Grade-Level Knowledge and Skills <ul style="list-style-type: none"><input type="checkbox"/> All TEKS are taught, but some are taught at greater depth than others (as identified in HQIM)<input type="checkbox"/> Emphasis on core conceptual understandings needed for long-term progression of learning in the content
	Research Based Instructional Practices in Reading Language Arts <ul style="list-style-type: none"><input type="checkbox"/> Explicit, systematic practice with Literacy Foundational Skills<input type="checkbox"/> Regular practice with grade-level, complex text and its academic language
	Research Based Instructional Practices in Math <ul style="list-style-type: none"><input type="checkbox"/> Concepts are presented as part of a strategic progression of learning, not as isolated skills<input type="checkbox"/> Understanding builds from concrete to representational to abstract
Universal Strategies	
ESF Level 5	Just-in-Time Intervention <ul style="list-style-type: none">▪ Students receive supplemental instruction in the prerequisite skills needed to access upcoming grade-level content▪ Interventions are designed to meet specific student needs, identified through frequent diagnostic assessment
	High-Quality Differentiation and Scaffolding <ul style="list-style-type: none">▪ Responsive to evidence of student learning gathered through frequent assessment▪ Student choice is incorporated to bolster confidence and engagement
	Extended Instructional Time <ul style="list-style-type: none">▪ Allows for additional time in highest-need academic courses▪ Includes additional, dedicated time for teacher support and collaboration

Targeted Strategies	
ESF Level 5	High-Dosage Tutoring <ul style="list-style-type: none">▪ Utilizes high-quality instructional materials that are intentionally aligned to core classroom content▪ Students engage in at least 3 tutoring sessions per week
	Acceleration Academies <ul style="list-style-type: none">▪ At least 25 hours of instruction, focused on prioritized content in a single subject, held during holiday breaks or on weekends▪ Staffed by highly-qualified teachers selected through a competitive process
	Small Group and One-on-One Interventions <ul style="list-style-type: none">▪ Occur routinely as part of the regular school day▪ Supports escalate from small group to 1:1 as students fail to make progress



Reading Academies K – 3



In 2019, House Bill 3 established new requirements for Texas Reading Academies

Goal

To increase teacher knowledge and implementation of evidence-based practices to positively impact student literacy achievement

Texas Reading Academies are steeped in the Science of Teaching Reading (STR), which is educator application of evidence-based reading methods that best support development of skilled reading

Texas Reading Academies Content

- Science of Teaching Reading
- Establishing a Literacy Community
- Using Assessment Data to Inform Instruction
- Oral Language and Vocabulary
- Phonological Awareness
- Alphabet Knowledge, Print Concepts, and Handwriting
- Decoding, Encoding, and Word Study
- Reading Fluency
- Reading Comprehension
- Written Composition



In Statute

School districts and open-enrollment charter schools must ensure that not later than the 2022-2023 school year, each classroom teacher in kindergarten or first, second, or third grade and each principal at a campus with kindergarten or first, second, or third grade has attended a reading academy [TEC, §28.0062(2)(A)]



Summer Learning



Purpose of Summer School Programs: To support student success, to meet requirements of HB 4545, to support students who need credit recovery, to fill in gaps of services for students identified as having a special need.

	SpEd Compensatory Camps	EL/ESL (Grades PK-K) minimum of 10 students	Reading, Math (Grades 3 & 5)	Reading, Math, Science, Social Studies (Grade 8)	HS (Alg 1, Engl 1, Engl 2, Bio, USH)
Who:	Special Education Students	PK going into K K going into G1	HB 4545	HB 4545	Credit Recovery (Potentially HB4545)
What:	Vizzle or CRIMSI (if applicable by HB 4545)	CRIMSI Water Unit: Getting ready for Kindergarten	CRIMSI (1 unit) 90 minutes each subject	CRIMSI Reading & Math facilitated by R10.** We will supply Social Studies. CRIMSI Science, no facilitation.	CRIMSI Units available, only Alg 1 facilitated by R10.**
When:	June 6 - June 30 (Teacher Last Day: June 2) SS Prep Day: 6/3 (half day)	June 1 - June 30 (Teacher Last Day: June 2) 8:30-3:00	June 6 - June 30 (Teacher Last Day: June 2) SS Prep Day: 6/3 (half day)	June 6 - June 30 (Teacher Last Day: June 2) SS Prep Day: 6/3 (half day)	June 6 - June 30 (Teacher Last Day: June 2) SS Prep Day: 6/3 (half day)
Where:	TBD	TBD	TBD	TBD	TBD
Projected Numbers:	20	10	G3: 40 G5: 33	G8: 42	Alg 1: 38 Bio: 20 Engl 1: 37 Engl 2: 20 USH: 10 (HB 4545 Numbers Only. Credit Recovery not included.)

Time Structures:

Days: Monday - Friday

Breakfast: 7:45 am - 8:15 am

Teacher Hours: 8:00 am - 12:45 pm (4.75 hours) or 8:00am - 3:00 pm (7 hours)

School Start Time: 8:30 am

School End Time for G3,5,8 & HS: 12:15 pm



CRIMSI

Covid Recovery

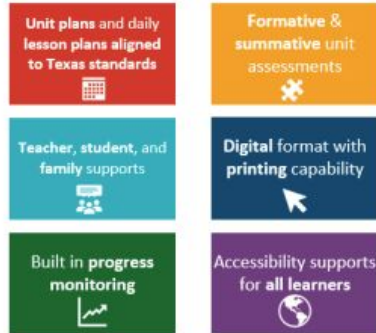
Instructional Materials

Support Initiative



What is CRIMSI?

Districts, schools, teachers, and coaches participating in CRIMSI receive additional benefits to support the implementation of THL



CRIMSI Additional Supports



Aligned Onboarding
Training



Ongoing Collective
Professional
Learning



Internal Capacity
Building for Coaches
and Administrators



Stipends for Teachers
and Coaches











Digital Communities
of Practice with
Texas Educators



Printed Materials for
Teachers and Students



Subject	Publisher	
Integrated Pre-K		Teaching Strategies
Math		Eureka Math (K-5) ^o
		Carnegie Learning (6-12)
English Language Arts and Reading		Amplify (K-5 + K-2 Skills) ^o
		Amplify (6-8)
		Odell Education (9-12) ^o
Spanish Language Arts and Reading		Amplify (K-5) ^o
	<i>K-2 Skills Coming Spring 2022</i> <i>Full Product Available for 2022-23 Implementation</i>	
Science		Great Minds PhD Science (K-5) ^o
Social Studies	NA	Coming soon

Expectations for CRIMSI participants



District and School Leaders

- Appoint an **Initiative Lead** to support pilot implementation
- Attend “one-on-one” **kick-off** to plan for pilot launch and mid- and end-of-year **check-ins** to discuss progress
- Participate in **pre-pilot virtual collective learning** and **ongoing cohort meetings** to discuss implementation challenges – and solutions – with other leaders



Teachers

- Pilot the materials for the **full year**, including following the **scope and sequence**, using the **assessments**, and meeting the minimum number of **instructional minutes**
- Participate in **onboarding** and **ongoing virtual collective learning** (~90 minutes ~2x per month, in process of finalizing schedule)
- Submit **data** and provide **feedback**



Coaches (includes administrators coaching teachers)

- Support teachers in piloting materials for the full year
- Participate in **onboarding** and **ongoing virtual collective learning** (~90 minutes ~1x per month; in process of finalizing schedule)
- Submit **data** and provide **feedback**

All teachers participating in the pilot should be supported by a participating coach – district and school leaders can discuss options for coaching models in kick-off meetings

Supports provided to CRIMSI 2021-22 participants



Planning Supports

- Pre-pilot planning supports and ongoing check-ins for district and school leaders



Professional Learning

- Summer onboarding, ongoing collective learning, and communities of practice



Print Materials

- Print materials and trade books for the full year of instruction
- *Note all products also have digital access*



Stipends

- \$1,000 stipend per teacher
- \$1,000 stipend per coach





Blended Learning



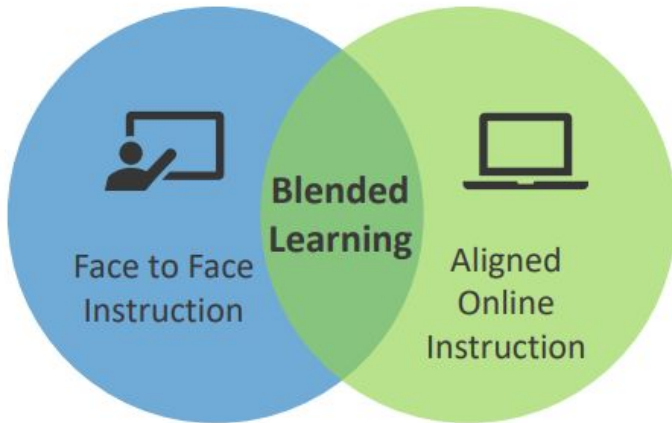
Blended Learning: A Coherent Solution for All Students

Blended learning combines the benefits of online learning and face to face teacher instruction to help teachers effectively differentiate instruction for all students.



Face-to-Face Instruction Offers:

- ✓ Human flexibility with critical instructional decisions
- ✓ Collaborative learning opportunities with classmates
- ✓ Feedback & encouragement from a real teacher
- ✓ Discourse to develop mathematical thinking



Aligned Online Instruction Offers:

- ✓ Embedded acceleration supports aligned to the module
- ✓ Preview, review, and development of key concepts
- ✓ Practice on Procedural Fluency aligned to the face-to-face lessons
- ✓ Real time data to guide instructional decisions



Literacy and Decodable Text (Supplemental)



Program Overview



The program introduces letters and sounds 1 at a time in a proven effective sequence (not alphabetic order)



Lessons shift from letter sound identification and production to blending. Students begin to decode and read in as soon as 4 weeks.



Through the program, students are awarded with books that are designed to reinforce skills learned in previous lessons.

- Students will be able to take home and build their own personal library with Learning Dynamics decodable texts!



Program Components

- Student resources:
 - 53 Full Color Decodable Books
 - Student workbook
 - Rewards (1 for each lesson)
- Teacher resources:
 - Program and Lesson Manual
 - Flash Cards
 - Music CD
 - Access to digital platform with Virtual Learning Companion *



*Access to Learning Dynamics Virtual Learning Companion is available to both teachers and students.



CCMR
(College & Career Military Readiness)
**and Texas College
Bridge**



Texas College Bridge offers an alternative to support students and achieve district CCMR

Students

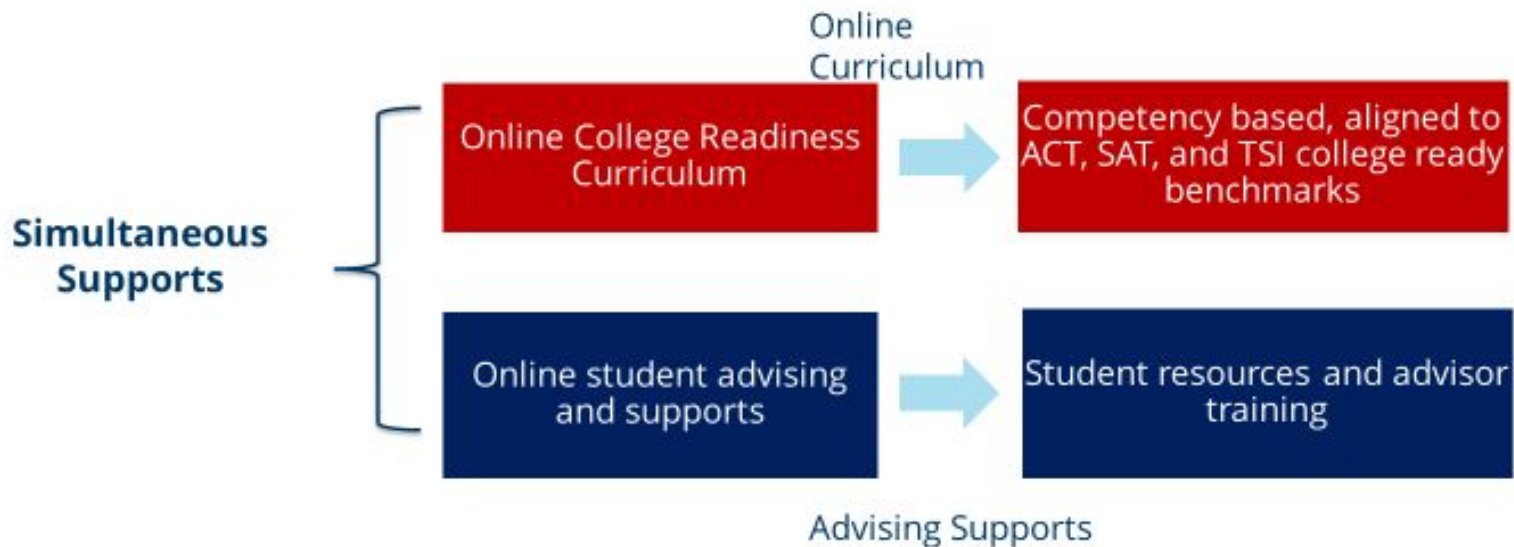
- Self-paced, competency-based, on-line course, with evidence of validity
- Provides personalized math and/or English learning
- Free for students
- Applicable beyond 2020

Districts

- Demonstrates college readiness **if ISDs and IHEs sign MOUs** approve the vetted HB5 course
- **Free** for districts (TEA has procured license to cover entire state)
- **Improves district A-F accountability ratings for 2020-2021 (and beyond)**
 - TEA is working to allow data reporting for this year's graduates who demonstrate college readiness through this college prep class

through 8/31

Texas College Bridge provides simultaneous supports



Grow Your Own: Education and Training Programs



Education and Training curriculum
available fall 2022



Industry-Based Certification available for
students who complete 2 or more E&T
courses (must include Instructional
Practices or Practicum)

Advantage Academy

Design & Multimedia Arts Course Sequence

Program of study: Arts, Audio/Video Technology and Communications

Career Cluster: Arts, Audio/Video Technology and Communications

Endorsement: Business and Industry

Programs of Study Course Sequence (2023-2024)

7th	8th	9th	10th	11th	12th
Digital Media* 13027800	Robotics 13037000	Principles of Arts, AV Technology and Communications^ 13008200	Graphic Design* 13008800	Graphic Design II** 13008900 Graphic Design Lab 13008910 Practicum in Business	Practicum in Graphic Design** 13009000 Or Practicum in Business

Student Run Print Shop

Versant 280 Color Printer

Xerox EX 280 Print Server Powered by Fiery



Deliver stunning outputs on any job with
2400 x 2400 dpi resolution and unmatched color fidelity
– even at speeds of up to 80 ppm.



Scale to meet your needs today and tomorrow
with the External Fiery Print Pro Server in addition to
modular feeding and finishing – upgrade as you need it

Advantage Academy

Entrepreneurship Course Sequence

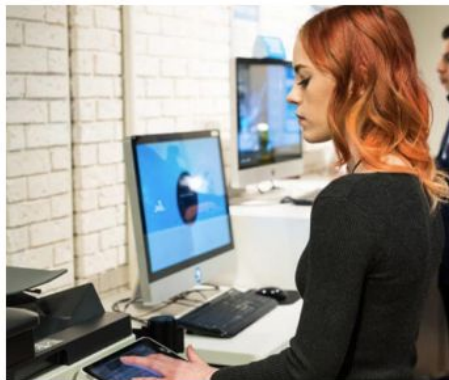
Program of study: Business, Marketing, Finance

Career Cluster: Marketing

Endorsement: Business and Industry

Programs of Study Course Sequence (2021-2022)

7th	8th	9th	10th	11th	12th
Digital Media* 13027800	Robotics 13037000	Principles of Business, Marketing, and Finance 13011200	Entrepreneurship 13034400	Practicum in Business Marketing and Finance 13012200	Practicum in Business Marketing and Finance 13012200



Deliver stunning outputs on any job with 2400 x 2400 dpi resolution and unmatched color fidelity – even at speeds of up to 80 ppm.



Scale to meet your needs today and tomorrow with the External Fiery Print Pro Server in addition to modular feeding and finishing – upgrade as you need it

ARCHITECTURAL/CIVIL DRAFTING TECHNOLOGY



PROGRAM DETAILS

In the Architectural/Civil Drafting program, you will earn an Associate of Applied Science degree. You will focus on learning specific skills pertaining to architectural and civil drafting and design. From architectural to topographical 3D models for residential or commercial projects, you will be equipped to render yourself into a great career.

And the best part — you can earn your degree in Architectural/Civil Drafting entirely online.

Advantage Academy

Engineering Course Sequence

Program of study: STEM

Career Cluster: STEM

Endorsement: STEM/ Or B

Programs of Study Course Sequence (2022-2023)

7th	8th	9th	10th	11th	12th
Digital Media* 13027800	Robotics 13037000	Principles of Applied Engineering 13036200	Manufacturing Engineering Technology I Applied Engineering	Engineering Design and Problem Solving (counts as Science) 13037300	Practicum in STEM (1 or 2 credits) 13037400



Afterschool Programming



What does High-Quality Afterschool Look Like?

Awardees will implement an afterschool program aligned with research-based best practices that meets all listed assurances including the following:

Student attendance for at least
4 days per week for 3 hours per day after school

A staff-to-student ratio of 1:15
or lower within the afterschool
program or 1:3 for a High
Impact Tutoring Model

A designated **full-time staff member** to oversee afterschool project

At least 1 hour of academics
per day

Enrichment aligned to student need and interest (e.g., STEM, reading/ELA, health and wellness, arts)



Teacher Residents Program



Teacher Residency Program Structure



TEXAS TECH
UNIVERSITY.

Teacher Residency Program Structure:

- ☐ The applicant and EPP partner must assure that they will collaboratively develop a teacher resident profile, aligned with the applicant's educator pipeline needs, that they assure will be used to recruit, select, and place teacher residents.
- ☐ The applicant and EPP partner must assure that the teacher resident year-long clinical teaching assignment is one academic year (28 weeks minimum) in length, with the teacher resident spending at least 3 days per week on the assigned campus under the supervision of the cooperating teacher.
- ☐ The applicant and EPP partner must assure that they will collaboratively develop a cooperating teacher profile, that includes consideration of the cooperating teacher's impact on student achievement, to recruit and select high-quality cooperating teachers.
- ☐ The applicant and EPP partner must assure that they will provide training and support in mentorship and co-teaching best practices for cooperating teachers.
- ☐ The applicant and EPP partner must assure that they will adhere to all educator preparation program requirements in the Texas Administrative Code (TAC).



**Questions or
Comments?**

