

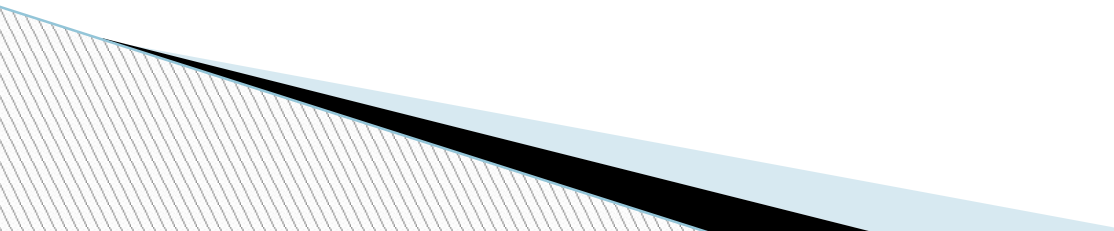


Class Meetings

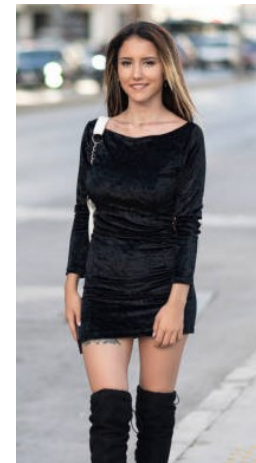
Louisville High School

2023/2024

Dress Code

- **The Dress Code is the student handbook!**
 - Body conforming pants should be worn with a **shirt that does not expose midriff.**
 - Crop tops that expose the midriff are unacceptable.
 - Dresses/shorts – Should be within reason and appropriate for the environment that it is being worn in.
 - Jeans – ripped jeans are permitted as long as ‘rips’ are appropriate for the environment.
 - Slippers are not permitted.
 - Tank tops are not permitted.
 - Tattoos that express suggestive phrases, designs, markings or profanities must be covered and not visible.
 - If your clothing is deemed unacceptable for school, you will be required to change.
 - **Administrator discretion will be used for all dress code violations!**
- 

These are examples of UNACCEPTABLE.



These are examples of Acceptable




Technology

- **Teachers** will decide when technology will be used for educational purposes in their classrooms.
- Study hall is just like the classroom, you must ask the adult monitor or teacher present prior to using any device.
- AirPods, earbuds, or headphones are not permitted in classrooms or during transition. These items should not be in or on your ears during class transitions. This is your warning.
- You can make any necessary phone calls in the Attendance Office with permission
- No videoing of students or staff at any time during the school day without staff permission
- Cell phones may be used during lunch mods only. You cannot make phone calls from your cell phone in the cafeteria. Go to the Attendance Office and ask permission to use your cell phone if a call home or to a parent is necessary.
- Cell phones are not to be used during transition to and from lunch or between classes.
- This is your warning in regards to cell phone usage.



Cafeteria

- You can enter the cafeteria serving lines one way. Enter the line near the water fountain.
 - You are responsible for your own tray and trash.
- 
- A photograph showing a student in a white long-sleeved shirt and black shorts, wearing a backpack, cleaning a brown table in a cafeteria. She is using a white paper napkin to wipe up some orange crumbs. Other students are visible in the background, some standing and some sitting at tables.
- If your table or under your table is a mess when you arrive, please notify staff ASAP.
 - If you make a mess, clean it up! Please be considerate of the cafeteria staff.
 - Courtyard is for Seniors only during lunch mods.
 - **Stay inside the cafeteria doors until the bell rings!**

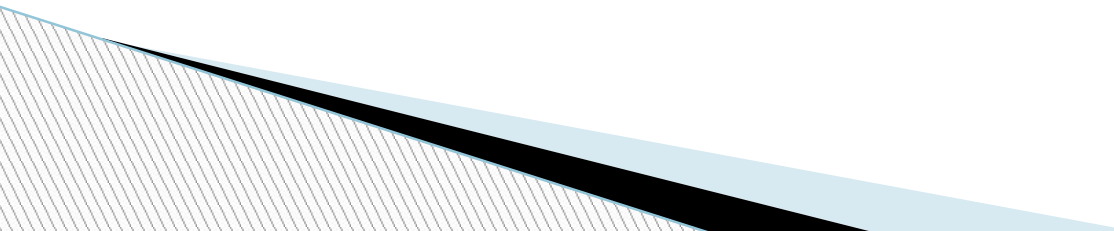
Academic Letter

- 30 hours of community service must be turned in on the proper form (Main Office) to Mrs. B by the end of the 3rd 9-weeks.
- GPA's will be checked at the end of each 9-weeks to compile a list of eligible students meeting the 3.5 GPA criteria.
- To be eligible:
 - You must have a 3.5 or above for each 9-week grading period (1st, 2nd, 3rd).
 - Have less than 3 excused absences and Zero unexcused absences.
 - Have not had any Major Discipline issues (ISAP or OSS). Tardy ISAP days do not count, but tardies still count toward your absence total.
- Students that have earned an Academic Letter will be notified prior to the end of the 4th 9-weeks.

Academics

- Any student that has a F on their report card will not be permitted to sign out of Study Hall the following 9-weeks.
- Students may be assigned Saturday Academy at LHS if they are failing a class due to missing assignments during the 9-weeks.
 - If a student assigned Saturday Academy does not attend on their assigned date they will receive 1-day ISAP upon their return to school.
 - Notification of Saturday Academy will be made by the teacher assigning it. This will be done via email and/or by a phone call.

Hallways, Hall Passes, and Restrooms

- You are not to be in the hallways before 7:30am.
 - You may only leave the cafeteria during lunch mods to go to the restrooms located near the Attendance Office.
 - When you sign out of a room in the building to use the restroom you must use the restroom that is closest in proximity to the room you are signing out of at that time.
 - All students should have a hall pass when in the hallways and it is not during class exchange.
 - Students who do not have a hall pass or are not utilizing the restroom that is closest to your classroom may be susceptible to consequences for being out of area.
 - The restrooms are not a hang out. There should be no loitering in the restrooms at any time.
 - If two or more students are in the same stall at any time, all students in the stall will be given 2 30-minute detentions on the first offense. Further consequences will be given for subsequent offenses.
- 

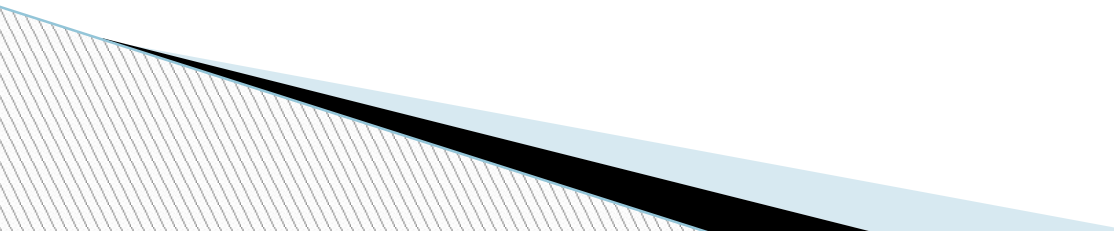
Behavior at Athletic Events

- Students are encouraged to cheer for all of our sports teams.
- Fans are not permitted to address players, in any manner, from other teams by name or number.
- Fans should treat officials with respect at all times before, during, and after games.
- Always conduct yourselves with class.
- Any violation during an after-school event or sporting may result in you being removed from the event and possibly banned from attending any future school events.

Parking Lot

- Be careful! People are walking between the high school and middle school. The speed limit in the parking lot is 10 mph. If you are deemed reckless in the parking lot, consequences will be issued and you will possibly lose your driving privileges!
- Park only in designated areas. Seniors only to park in the Senior designated area.
- Parking Pass cost is \$35 for the year, \$20 for 2nd semester, and \$10 for the last 9-weeks.
- If you do not have a parking permit, you will receive a warning sticker on your windshield and a detention. Further consequences will be assigned after the 1st offense. This is your warning.

Parent Pick-Up, Drop-Off & Student Entrances

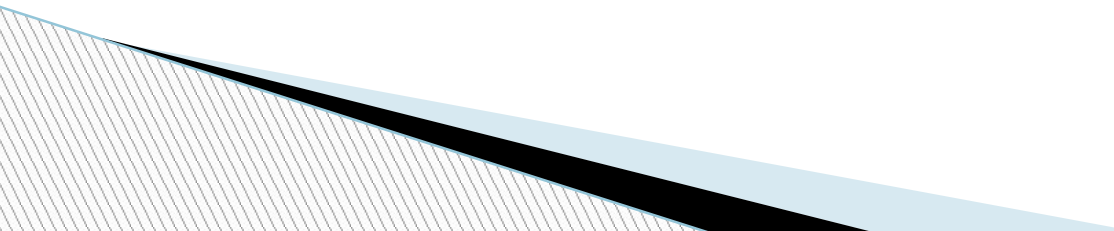
- Parents that drop-off before school and pick-up after school will do so at the **Front Parking Lot and Door 3 only**.
 - Students may enter the building in the morning using the following doors: 1, 3, and 18.
 - Pick-up and drop-off during school hours will be at **Door 3/Attendance Office Door only**.
 - All students being dropped off after 7:40am must enter and sign in at the Attendance Office.
- 

Attendance

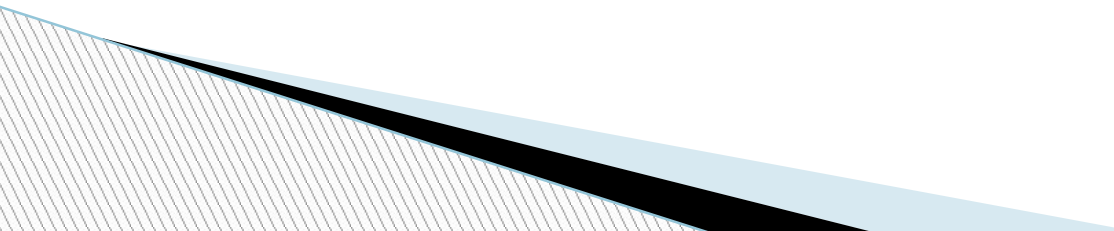
Attendance Policy is in Student Handbook

Tardy to School:

For every 5th tardy to school during a 9-week period students will receive 1-day of ISAP.

- Your assistant principal may send an email to notify you of your 3rd tardy and may include your the parent/guardian with the email address given as notification of the tardiness.
- 

Attendance

- Parents are required to call the attendance office if a student will be tardy or absent from school.
 - Students are required to turn in a note from a parent or a medical excuse when they return to school for an absence to be counted as excused.
 - If there is no communication with the parent, the absence/tardy is deemed unexcused and classwork missed may not be counted.
 - If a student reaches 15 days of absences, no credit will be given for any class work missed. This is by individual class.
 - All absences after 38 hours will be unexcused and the student will be placed on Attendance Watch.
- 

Vaping

1st Offense: 3-Days ISAP + Saturday Skuul (Anti-Vaping Program) held @ RG Drage. If you do not attend Saturday Skuul you will be assigned 2 additional days of ISAP upon your return to school.

2nd Offense: 5-Days Out-of-School Suspension

3rd Offense: 10-Days Out-of-School Suspension

***All devices will be confiscated on each offense**



Safety



- Do not prop open doors!
- Do not open a closed, locked door for anyone during the school day.
- If you witness any person or situation that makes you feel uncomfortable, report it ASAP to a staff member! This includes social media and/or something heard from peers through conversation.

Bullying

IDENTIFYING BULLYING BEHAVIOR

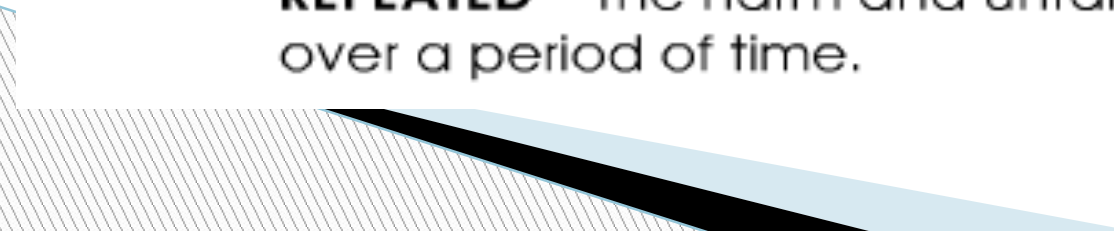
The Elements of Bullying

Abusive situations that are defined as bullying must have three main characteristics:

HARM – Someone gets hurt either physically, socially, or emotionally.

UNFAIR MATCH – One person or group does not have the physical, verbal, or social skills to effectively contest the other person or group.

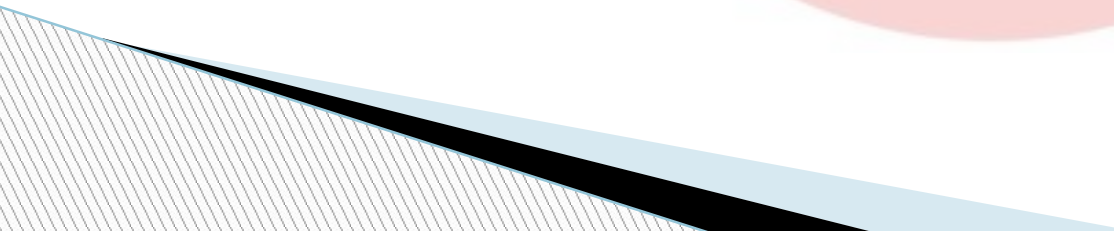
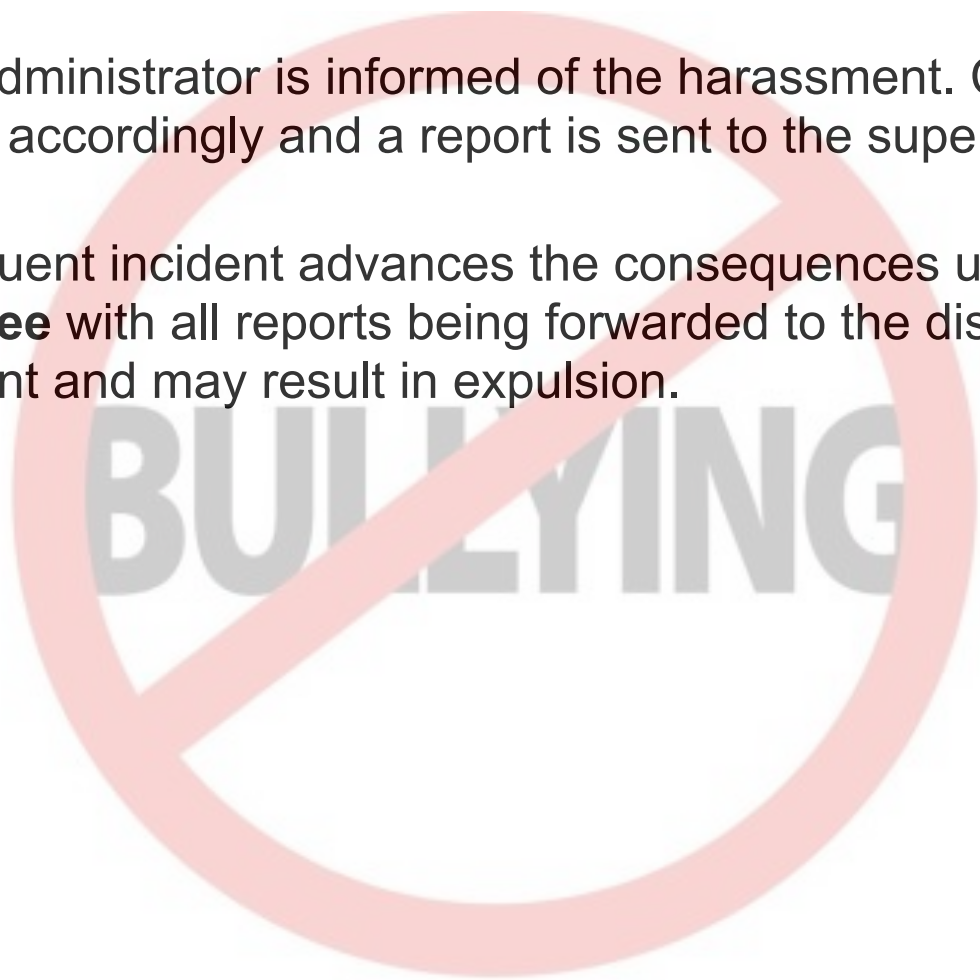
REPEATED – The harm and unfair match are repeated over a period of time.



Bullying

Tier One – Administrator is informed of the harassment. Consequences are assigned accordingly and a report is sent to the superintendent.

Each subsequent incident advances the consequences up to **Tier Two** and **Tier Three** with all reports being forwarded to the district superintendent and may result in expulsion.



Bullying

- Cyberbullying will be reported to the police! Please keep all harassing messages, but do not respond.
- Any harassment that occurs on the bus may result in a bus suspension and will follow bullying protocol.
- Report any form of harassment that you experience or witness. You will be asked to complete an incident form. Your name will be kept confidential.
- If an incident or bullying is not reported administration will not know about it and be able to assist in the matter.

Senior Privilege

- If you have Senior Privilege 1st mod, you may not enter the building before the end of 1st mod.
- If you have Senior Privilege 8th mod, leave the building after 7th mod.
- All Seniors have senior privilege for the first 9-weeks. After that, Seniors that have a D or F will lose Senior Privilege for the next 9-weeks.
- There is no Senior Privilege during lunch mods or study halls.