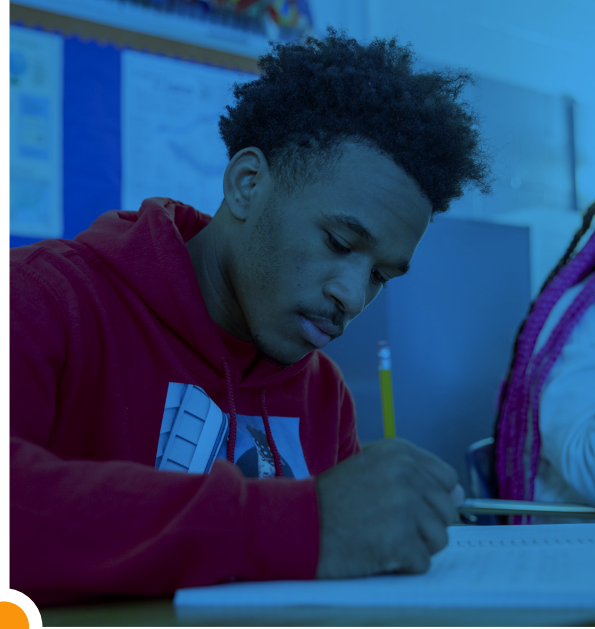
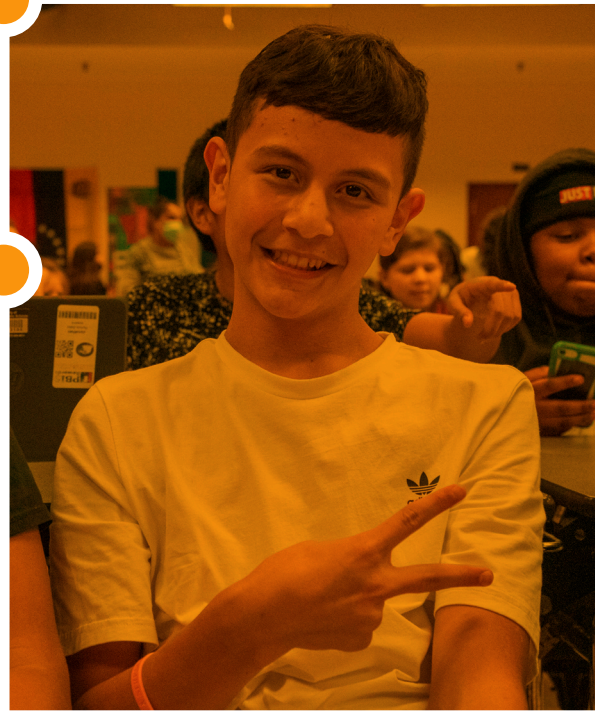


# CRISIS PREPAREDNESS: Parents & School Emergencies



The safety and security of our students and staff are top priorities for Richmond Public Schools.



# Contents

## Crisis Preparedness: Parents & School Emergencies

- 3 | Introduction
- 3 | What Is An Emergency?

## Preparedness

- 4 | What Should Parents Do To Prepare For An Emergency?
- 5 | What Will Schools Do In the Event Of An Emergency?
- 6 | Protective Actions The School May Use
- 8 | What Should Parents Do In The Event Of An Emergency?

## Emergency Communications

- 10 | How Will Parents Be Notified If An Incident Occurs At School?
- 10 | Recovery After A Crisis
- 11 | For Additional Information
- 11 | Parent Emergency Contact Card

# CRISIS PREPAREDNESS: PARENTS AND SCHOOL EMERGENCIES

## Introduction

The safety and security of our students and staff are top priorities for Richmond Public Schools (RPS). This booklet explains some of the procedures that have been planned and practiced in the event of an emergency at your child's school.

School administrators work closely with police, fire, emergency services and public health agencies to ensure appropriate practices and that all schools are prepared for emergencies. Key personnel are trained in National Incident Management System procedures. We are prepared to work in partnership with emergency responders should a critical incident occur in one of our schools.

Our comprehensive emergency plan addresses many kinds of potential incidents, not because we expect them to occur, but because we want to be prepared in case they do. For security reasons, specific details may not be made available to the public; however, parents and students have a vital role and it is important that you know what to do in an emergency. Please review the information in this booklet to make sure you and your child understand the emergency procedures.

## What Is An Emergency?

An emergency is any unexpected incident that could possibly put any student or staff's safety at risk. It could be anything from a disruption in utilities to a terrorist activity and could affect one child, one school, or the entire school district. School officials, and sometimes emergency responders, will evaluate the seriousness of each situation and determine the best action to respond quickly, safely and appropriately. Advanced planning and preparation can minimize the risks in any emergency situation. These materials offer guidelines for preparedness, what parents should do, and what the school will do in the event of an emergency. Communication procedures and student release procedures are also outlined.

## What Should Parents Do To Prepare For An Emergency?

Parents have an invaluable role in preparing their children for emergencies. Listed below are some of the ways you can help them understand that if an emergency occurs at school, teachers and school officials are trained to handle the situation. Reassure them you will be contacted by the school and you will be reunited with them as soon as it is safe to do so.

- Be sure emergency contact information is current and correct. Contact the school front office immediately whenever your address or work, home or cell number changes.
- Keep the school nurse informed of any medical conditions or physical limitations your child may have or medications your child may be taking. Provide the necessary medical supplies and medication for daily use and an additional supply to carry your child through an emergency. If there are questions about the appropriate amount of medication or supplies, please consult your child's medical provider.
- Identify who is authorized to pick up your child if you are not able to respond. Make sure their contact information is current and correct, and on file with your school. Please understand your child will only be released to parents and persons identified on the emergency contact list. Discuss this information with your child.
- Make sure your child knows their parent or caregiver's name, address and phone numbers. If there is only one parent or caregiver, your child should have contact information for a second responsible adult.
- Talk with your child about the importance of remaining calm and following instructions in the event of an emergency. If an emergency occurs while they are at school, their teacher will provide them with appropriate instructions and information.
- Let your child know they could be moved to another location until you can pick them up. Explain the term "evacuation" so they are not afraid of being evacuated from their school. A simple definition of evacuation is the process of moving people away from an area where they are in danger to a safer location.

# PREPAREDNESS

- Explain that cell phones should not be used during an emergency unless directed to do so by a teacher. Emergency responders will depend on cell phones for communication. If students and parents are trying to contact each other, cell phone circuits may become overloaded, interfering with the ability of emergency personnel to communicate vital information.
- Whenever you are on school grounds, remain alert to activity in and around the school. Report any suspicious activity to school administration so they can investigate.
- Establish a family preparedness plan including a communications plan. This will enable you to communicate with all family members during an emergency.
- In case of an emergency in which your child cannot go to their home, make sure there is another place he or she can go and be safe while waiting for a family member to pick them up.

## What Will Schools Do In The Event Of An Emergency?

What we do in an emergency depends on the situation and the specifics of the incident. We will make every attempt to ensure that instruction continues, even when it becomes necessary to lock down the school. Depending on the severity of the threat or emergency, additional measures may be taken, including sheltering-in-place, evacuating students from the building or closing the school early.

If emergency responders are called to the scene, we will work with them in a unified command to determine which plan should be implemented. School emergency plans vary from school to school, based on school size, building layout and other relevant factors, and are initiated depending on the events unfolding at the time of the incident. While every school has established plans of action, evacuation sites, and family reunification plans, these plans must remain flexible as conditions change. Parents will be informed as soon as we have done everything we can to ensure the safety of students and when it becomes possible to provide accurate and helpful information.

## Protective Actions The School May Use

Each school has an emergency preparedness plan involving a number of possible actions. The response varies, depending on the conditions and the situation, and is determined by a crisis management team trained to make such decisions. It is important for parents to understand that if a critical incident occurs, students will be dismissed to parents only when danger has passed. Schools may use the following protective actions:

- **Lockdown.** A lockdown may be used because of an event inside the building or because something is happening outside and police have determined it is best to make sure the school is protected. The purpose of a lockdown is to restrict the movement of staff and students, and to fully secure the building.

During a lockdown, all interior and exterior doors are locked. No one is permitted to enter or exit the building until school officials, often working in conjunction with police, have determined it is safe to do so. All staff, students and visitors will be accounted for and instruction continues. The length of the period of lockdown is based on the specific situation, and could be a few minutes or hours. It is possible that a lockdown might involve detaining students beyond the regular school day. It is never our intention to hold students unnecessarily, and we will not do so except to ensure their safety.

Conditions will return to normal as soon as it is safe to do so. Parents may or may not be notified when the school goes into lockdown. There are times when the school goes into lockdown for drills or training, or for an external event that does not involve the school. The school administrator and Director of Safety & Security will determine when the event is significant enough to notify parents.

- **Shelter-in-Place.** This protective action is considered when an event takes place outside of the school and officials determine the safest course of action is to keep students and staff inside the school until the external event is handled. Some examples could be a weather situation, hazardous materials release, or a situation unfolding in the community into which children should not be released. Students

# PREPAREDNESS

who are outside will be moved inside, including students who are in exterior classrooms or trailers. If a shelter-in-place is called for and may extend beyond the school day, parents will be advised as soon as possible.

- **Evacuation.** If it is unsafe for students and staff to remain inside the building, the school will be evacuated. Students and staff may remain on school grounds until the building is safe to re-enter or be relocated to a safe location off school property, depending on a variety of circumstances. In the event of an off-campus evacuation, school administrators will work with emergency officials and the Department of Transportation to move students to a safe location. From there the students will either be transported home or wait for family members to pick them up from the reunification site. In either event, the school administrator and Director of Communications will make sure parents are notified.
- **Emergency School Closing.** This procedure will take place when school administrators determine students are safer at home than at school. This most often occurs due to loss of utilities or a weather emergency. Parents will be notified that school(s) will be closing. Under normal circumstances, students who normally ride the bus will be transported home and parents will be notified.
- **Off-Site Family Reunification.** Students are moved off-site when school officials determine students and staff should not re-enter the building until it is rendered safe. Several off-site locations are determined in advance, but are not shared with parents until an incident unfolds. Police and school officials choose the best reunification site at the time of the incident depending on the circumstances of the emergency. Parents will be notified of the family reunification site as soon as it is appropriate to do so. Our main priorities in an off-site evacuation are student safety and accountability. We want to make sure students are released to authorized individuals and a sign-out procedure will be initiated.

In the event of an off-site school evacuation, parents will be provided information as to where the reunification site is located. Parents or authorized adults will be required to show photo identification in order to pick up a child. The process may take some time because we want to ensure reunification is made with authorized individuals.

## What Should Parents Do In The Event Of An Emergency?

The most helpful parental responses to a school emergency are to remain calm and wait for accurate information to be sent to the number listed on your child's emergency contact using the **Remind Messaging System** ([www.rvaschools.net/remind](http://www.rvaschools.net/remind)). We understand it is a natural instinct for parents to want to rush to their child. It is important for you to understand that, during such an event, individual schools and emergency responders have made preparations to deal with these incidents. Your cooperation in an emergency is essential to the safe and swift resolution of the incident.

- Please do not call the school. It is essential to keep phone lines open so school officials can make outgoing emergency calls. If students are ill or injured, the parents of those students will be notified first.
- Please do not go to the school. As we have learned from past school emergencies, one of our greatest challenges is how to manage a crowd of parents and concerned citizens rushing to the scene to "help." By doing so, parents can inadvertently create traffic jams that may block emergency responders from getting to the scene or leaving, if necessary, to transport injured staff or students to emergency medical facilities.
- Remain calm, follow procedures, and cooperate with school and public safety officials.
- Remain close to the phone listed as your emergency contact number.
- Obtain current information about the incident from the district website at [www.rvaschools.net](http://www.rvaschools.net).



# PREPAREDNESS

---

- Understand that emergency pickup procedures are different from routine pickup procedures. In the event you are notified to pick up your child at school or at the designated family reunification site, bring a photo identification card. If you must send someone else to pick up your child, be sure it is someone who is listed on school records as an authorized individual and they are in possession of a photo ID. Your child will not be released to anyone who is unauthorized or who cannot provide appropriate identification.
- Follow emergency procedures. If you are asked to pick up your child, you will be asked to follow the checkout procedure established for emergencies. The reunification system was developed to ensure the safety of all students and it is vital that the procedure be followed.
- Remain in designated areas at the family reunification site.
- Be patient. It is essential that the family reunification procedure be carried out in an orderly manner so we can protect and account for all of our students.

## How Will Parents Be Notified If An Incident Occurs?

Our first priority is to ensure all students are safe, accounted for, and under adult supervision. As soon as it is possible to do so, the Director of Communications will communicate information to parents and the community. The school district has a variety of media available to parents which will be updated, as needed, with the most complete and accurate information available.

1. RPS Website ([www.rvaschools.net](http://www.rvaschools.net))
2. Remind Text Message Alerts (division- and school-level direct cell phone communication)

In the event of a significant emergency, parents are encouraged to tune in to one of the following local television stations as an additional source for updates:

- Channel 6 – CBS
- Channel 8 – ABC
- Channel 12 – NBC

Please note that while the television stations aim to report the most current information, we cannot guarantee they are reporting all details accurately, and parents/caregivers should first check the official RPS platforms noted above.

## Recovery After A Crisis

School officials understand that a traumatic event in a school or in the community can have an emotional impact on staff and students. RPS has a trained team of counselors, social workers, and psychologists who can respond to the school during and after a critical incident to provide assistance. If there is a chance a critical incident makes an emotional impact upon staff or students, the RPS intervention team helps those affected cope with the aftermath of the incident.

# EMERGENCY COMMUNICATIONS

## For Additional Information

- For additional information about the RPS Safety & Crisis Plan, contact Monica Fecht at [mfecht@rvaschools.net](mailto:mfecht@rvaschools.net).
- Visit [www.rvaschools.net/schools-office/safety-and-security](http://www.rvaschools.net/schools-office/safety-and-security)
- For information about the Safety & Crisis Plan for your child's school, contact the school administrator.
- Refer to this website for resources on emergency readiness: [www.ready.gov](http://www.ready.gov).

## Parent Emergency Contact Card

For your convenience. Please print and fold wallet card for use in an emergency.

rvaschools.net

Emergency Numbers & Notes

**RPS** RICHMOND  
PUBLIC SCHOOLS  
School Emergency Card

Sign up for Remind text alerts at  
[rvaschools.net/remind](http://rvaschools.net/remind).



**RPS**

RICHMOND  
PUBLIC SCHOOLS

[rvaschools.net](http://rvaschools.net)