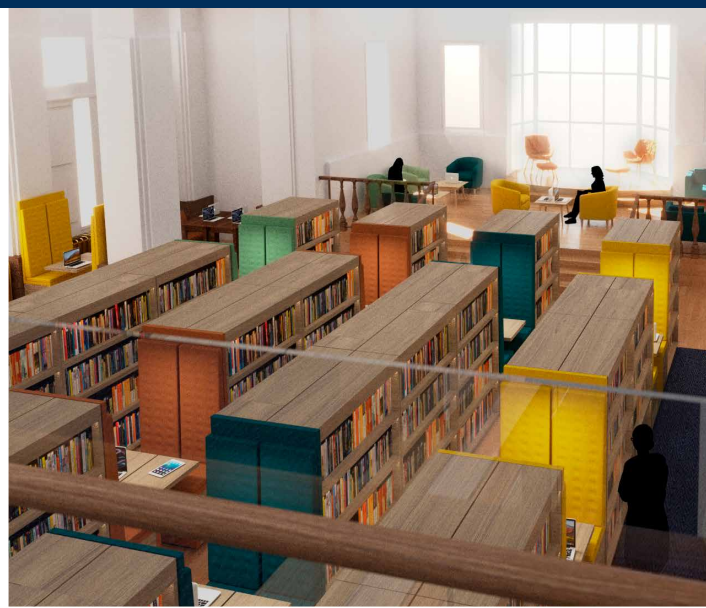




MALVERN ST JAMES
Girls' School

FUNDRAISING FOR THE LIBRARY CASE STATEMENT



THE NEW LIBRARY AND LIMITLESS LEARNING



MALVERN ST JAMES
Girls' School

The planned renovation of the Library is the biggest and most important project in MSJ's history.

The Library is an amazing space: it has seen us through almost a century's service and many generations of Malvern girls. But now it is time for change, to reflect a transformation in the way in which we teach and learn. Girls no longer rely solely on traditional study methods and materials, and are actively encouraged to integrate their digital and physical resources. The role of the Library is to facilitate this much more fluid style of learning, as well as to support pupils in working both collaboratively and independently.

As a busy teaching and learning hub, we want the Library to inspire pupils to explore, imagine, innovate and create. We call this a limitless approach to learning.

Our vision is for an exciting, interactive space that will enable girls to blend physical and digital resources across the curriculum. It will deliver the best facilities for building confident and curious young minds, and in time, preparing them for university and the workplace.



TRANSFORMATIONAL SPACE IN WHICH TO STUDY AND EXPLORE

Ultimately, our goal is to retain the existing Library's unique sense of place whilst introducing new features that work hard for our girls. The heritage wood panelling, distinctive east-west bay windows and views will all be preserved. Fused with these much-loved architectural gems will be modern technology, glass-encased meeting spaces and flexible work areas.

Central to the ground floor space will be a new glass-box lecture/seminar workspace, which can be subdivided to house 3 groups of 20 pupils in an acoustically protected environment, or can be opened out to accommodate 60. The glass structure will allow natural light to flood into it and through it, and will leave the sight lines from the west bay to the east bay unobstructed.

Space around this will be divided into soft, informal seating, formal study space, independent study desks, collaborative workspaces, meeting rooms and accessible bookcases.

A glass sided mezzanine, running along the inside length of the Library will provide housing for hundreds more books, individual study space and work pods for the Sixth Form. A glass corridor will project from this mezzanine at a 90 degree angle and stretch across the hall space below. This dramatic architectural addition will connect to a further rectangular workspace above the glass seminar rooms on the ground floor which will be the Sixth Form study area.

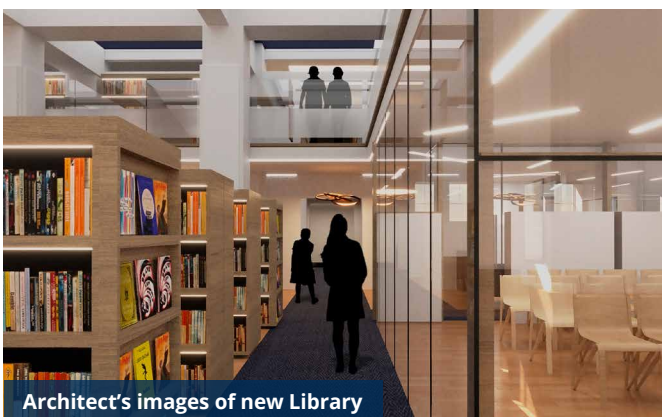
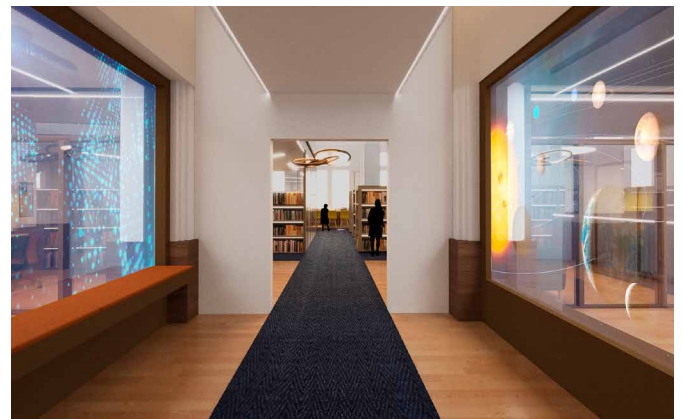


Mezzanine Level View

The designated Sixth Form mezzanine provides plenty of quiet study options and access to a wealth of academic resources. This will be a more 'grown up' space, designed to replicate what girls will find in higher education settings and to foster a smooth transition to university learning.

It may also be possible to accommodate Year 11, focusing on their GCSE study, within the mezzanine space at certain times.

Due to the height of the room, a mezzanine level is the optimum way to maximise space in the Library, allowing us to create more useful space below and to be able to mix big and small enclosed spaces with open study areas. It will add drama to the room, whilst the glass panelling will ensure that light is unobstructed and sight lines remain clear.



Architect's images of new Library



RAISING THE ROOF FOR A FANTASTIC SIXTH FORM EXPERIENCE

We have developed plans for an extension on the flat roof above the Library. This would create an entirely separate floor which could be used by Sixth Form during term time, and be a lettable space during the holidays. If we are able to achieve this, we can make a designated Sixth Form Centre, sitting right above the Library which would have more space to relax and socialise as well as to work.

The roof top area would have a large central space, primarily of glass, which would act as a function/ large meeting room (for example to house the Sixth Form Lecture programme), as well as an area for independent study and an area for downtime, including a small kitchen facility.

There would be office/meeting room space as well as storage, lockers and WC facilities.

This space would be serviced by a separate external entrance as well as an internal entrance, and be fully accessible by lift.

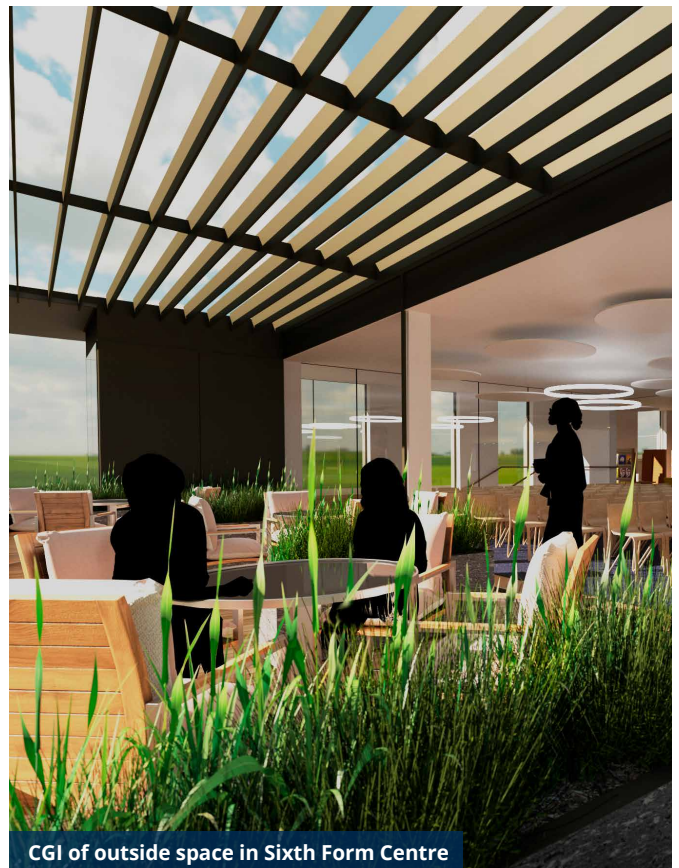


CGI image of Sixth Form Centre (internal)

AN INVIGORATING EXPERIENCE

Fresh air and a vista to our natural environment is also part of our roof-top plan. We know that to stay sharp and focused when studying, pupils benefit from open green spaces where they can clear their heads and soak up the surrounding landscape. With this in mind, we have included an attractive roof-terrace within the design scheme, where girls can enjoy views up to the Malvern Hills and across our beautiful Worcestershire countryside. Bifold doors will pull the outside in, creating a desirable internal space which will feel incredibly light and open.

Of course, all this raises the original cost of the project, but we believe the benefits are worth the extra investment. These enhancements will provide our girls with an extraordinary environment for learning; one that goes far beyond a place for research, study and revision. Instead, the Library will become a favourite locus for independent enquiry, sharing ideas and socialising in study breaks. Our vision is that girls will feel energised and stimulated by the new spaces; whether they are pursuing individual study goals, engaging in group learning tasks or enjoying thinking time on the roof-terrace.

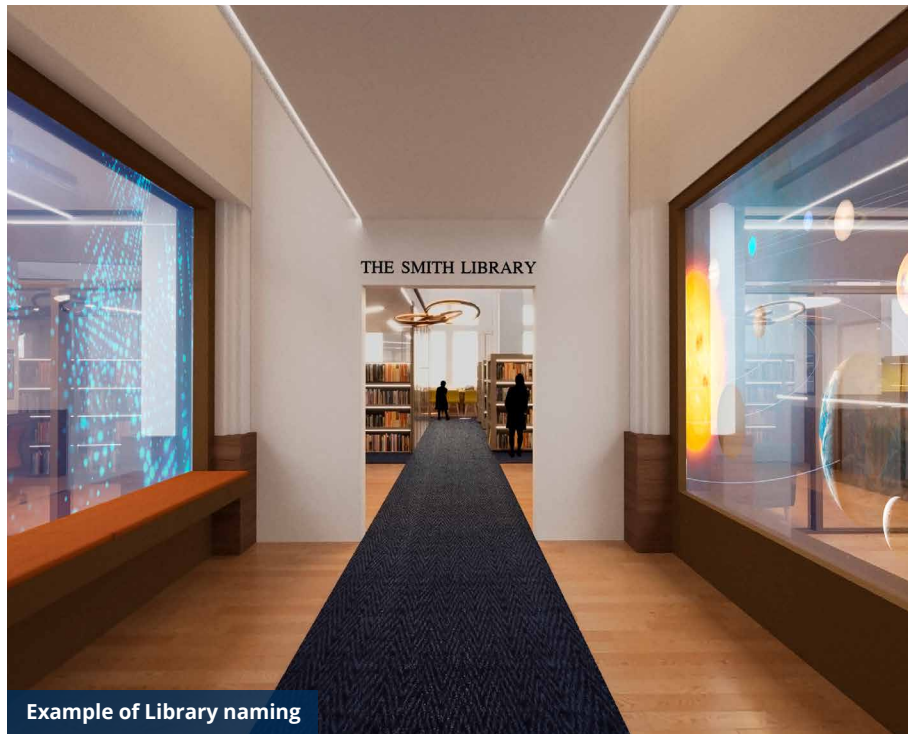


CGI of outside space in Sixth Form Centre

DEDICATING YOUR GIFT

Every element of the Library renovation has been designed with innovation and impact at its centre. What's more, this exciting new context for learning offers several opportunities for givers to support a particular part of the project or dedicate their gift in their own name or in memory of a loved one.

A full list of designated giving opportunities and naming rights can be obtained from the School's Development Office. These include:



Example of Library naming



The talking point An acoustically protected central glass structure on the ground floor with internal dividers that can flex to be 1 large space or 3 seminar rooms.



The mezzanine landing A striking glass feature for Sixth Form and some Year 11 study, located along the Library's internal wall incorporating pods and individual study desks.



The central mezzanine A striking glass cased work space for Sixth Form, with individual and collaborative study and café point.



Flexible furniture packages Modular units that can easily be moved to create a variety of learning spaces.



Private study pods Individual learning and reading nooks for individual, paired or small groups learning activities.



Comfy seating zones Relaxed seating for reading books, periodicals and journals.



Special meet and share rooms Spaces for clubs and community activities.



Cyber smart controls Wall touch displays at the entrance point and new screens in meeting areas. Workshop and lecture spaces will also be equipped with digital technology so that expert speakers can be video-linked from around the world.



Maker Zone A green room for podcasts and video production, and engineering/maker spaces for girls to experiment with different presentation techniques.



The essential rig Built-in charging points, improved ventilation, storage space, upgraded lighting systems, scanners, printers, cameras, headphones and projectors.



The secret door A secret door in the bookshelving which gives way to one of the internal rooms.



Glass Entrance, Digital Screens and Foyer welcome space A spectacular entrance way into a spectacular space.

£6M PLEDGED OVER 5 YEARS

LIBRARY SCALE OF GIVING – NAMING RECOGNITION

1. NET ANNUAL COST 45% TAXPAYER	2. NET ANNUAL COST 40% TAXPAYER	3. GIVER'S ANNUAL PAYMENT*	4. GROSS ANNUAL GIFT	5. TOTAL GIFT (FIVE YEARS)	6. GIFTS NEEDED	7. TOTAL TARGET	8. % OF TOTAL
£	£	£	£	£	#	£	%
110,000	120,000	160,000	200,000	1,000,000	1	1,000,000	16.67
55,000	60,000	80,000	100,000	500,000	2	1,000,000	16.67
27,500	30,000	40,000	50,000	250,000	5	1,250,000	20.83
11,000	12,000	16,000	20,000	100,000	10	1,000,000	16.67
5,500	6,000	8,000	10,000	50,000	20	1,000,000	16.67
1,100	1,200	1,600	2,000	10,000	60	600,000	10.00
110	120	160	200	1,000	150	150,000	2.50
					248	6,000,000	100%

Please note: • The £1 million top gift equates to 16.67% of the £6million target. • The top eight (8) gifts represent over half of the target (54.17%). • Gifts may be made above, below and in between the various levels. • * denotes the annual cost of gift to a 20% basic rate taxpayer

It would be incredibly difficult and take many years to raise this amount through cake sales and sponsored walks. Therefore, the over-riding aim of this campaign is to raise as much money as possible, as quickly as possible, initially from as few gifts as possible, as demonstrated in the Scale of Giving above.

We are seeking to secure **248 gifts between £1 million and £1,000 over a pledge period of 5 years.** Of course, gifts can be made above, below and in between the various levels, and all gifts will be gratefully received and recognised.

Tax benefits are available through Gift Aid, with indicative net gifts set out for each level on the Scale. There are also tax benefits available for legacy gifts.

Gift Aid will give an uplift of 25%, contributed by HMRC, on all eligible donations from UK tax payers. Giving can also be tax efficient for individuals via HMRC self-assessment mechanisms. The scale illustrates the impact of this on net cost for higher rate tax payers in columns 1 and 2.

FUNDRAISING FOR CHANGE

It will cost £3.5million to create a Library which does everything we need it to. Extending the project to include an outstanding Sixth Form Centre as part of a reconfigured roof space will increase this budget to around **£6 million.**



Clearly, this represents a significant fundraising challenge for the School and one that we can only embark on with your help. It also makes practical and financial sense for us to combine both of these capital improvements into one cohesive development project, rather than split it into two separate phases. We want to create the very best facility for our pupils whilst minimising disruption and maximising the value of having contractors on site. The only way we can achieve this is to appeal to the incredibly altruistic spirit of the MSJ community.



1934



Present Day



The New Plan

BECOME A LIBRARY BENEFACTOR

Our original library was funded by founding benefactors who understood the fundamental role of this space within the learning environment. Today, we are seeking to bring a new generation of major givers into the MSJ family, some of whom will be prepared to make six or seven figure leadership contributions at the top of the scale shown opposite. Gifts can, of course, be pledged over a period of 5 years to maximise the tax benefits and we are very happy to discuss naming rights for selected features of the project or, indeed, the Library as a whole.

Reaching our target will entirely depend on the support we receive from the MSJ community, which in the past has been both generous and skilfully directed. We believe the new Library keeps the School's passion for innovation thriving and provides a wonderful opportunity for new benefactors and givers to become part of MSJ's philanthropic tradition. It also ensures that fundraising does not take over the life of the School for years to come and allows us to keep investing income and assets into other MSJ projects that are currently underway across the estate.

The importance of this venture cannot be underestimated. It will put aspirational teaching and learning at the heart of all we currently do and be a lasting legacy for future generations of Malvern girls.

IF YOU ARE INTERESTED IN FINDING OUT MORE, PLEASE DO LET US KNOW

Fiona Meredith
Development Office
Tel: 01684 892288
meredf@malvernstjames.co.uk



Mrs Olivera Raraty
Headmistress
headspa@malvernstjames.co.uk



Registered charity number 527513



BE PART OF A PIONEERING LEGACY

Forward-thinking and a pioneering approach have always been part of the Malvern girls' ethos. The Founders' Library was built by the founders of MGC, Miss Lily Poulton and Miss Isabel Greenslade. In the midst of the 1930s depression, undeterred by economic conditions, they pursued their vision to provide a first-class Library, and raised the funds to do so. The Library extension was added to the existing building and was immediately recognised as an important and impressive facility for one of the largest girls' schools in the country. It was opened in 1934 by Queen Elizabeth, the Queen Mother.

We'd love you to be part of this pioneering legacy. With your help we can build on the achievements of those who have gone before us and create an extraordinary environment for learning.

