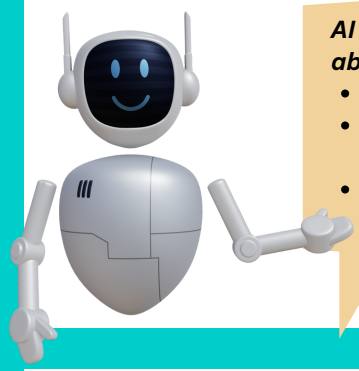


# Create Identity Icons With AI Using AutoDraw

What aspect of AI will this activity explore?




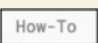
*AI can help people of all artistic abilities:*

- Create original images.
- Grow their creative confidence.
- Produce high-quality graphic responses.

Using AutoDraw, **quickly sketch icons** that connect to aspects of your identity and let generative AI “guess” the icons you’ve drawn. Select a shape that AutoDraw suggests, and it will **replace your simple sketch with a beautiful graphic!**





Open up a new tab in your browser, and navigate to [www.autodraw.com](http://www.autodraw.com)

 → 

**Step 1:** Watch the **tutorial** to learn how to use AutoDraw.

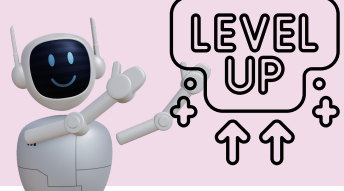
**Step 2:** Go back to your page, and select the **shape tool**. Draw 3 circles.



 **Step 3:** Select **AutoDraw** -- Notice the suggested icons in the **top** toolbar.

- In each circle, AutoDraw a picture of
- a **favorite activity** to do in your free time.
  - a **favorite season** of the year.
  - a picture of a **symbol that represents your identity**.

Review the suggested icons in the top toolbar and select one that matches your drawing.



- Explore AutoDraw and play with the features!
- Can you fill in your images with color?
- Will AutoDraw accurately guess what you are trying to create?
- Share your completed drawing [HERE!](#)

**Reflection**

PERCEPTION: To what extent was this AI tool able to perceive what you were trying to create? What additional information (if any) would the AI tool need to better understand what you were asking it to do?

**Classroom Application**

- Get to know your students by making Identity Icons
- Help your students generate new ideas or images
- Help your students demonstrate their learning
- Support students who struggle with visual or creative learning

**CA K-12 Computer Science Standards Alignment**

Core Concepts

- Data and Analysis (DA)
- Collection, Visualization, Transformation
- Inference and Models
- Algorithms and Programming (AP) Variables

Core Practices

- 4: Developing and Using Abstractions
- 5: Creating Computational Artifacts

**ISTE Standards for Educators Alignment**

- 2.3.b
- 2.5.a

Keep connected to all things AI at SBCEO by visiting [www.sbceo.org/AI](http://www.sbceo.org/AI)