

SANTA FE INDEPENDENT SCHOOL DISTRICT



# **BOND STEERING COMMITTEE**

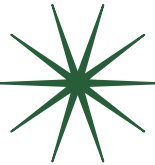
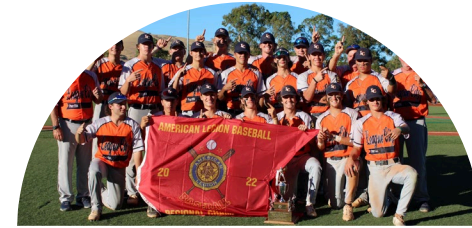
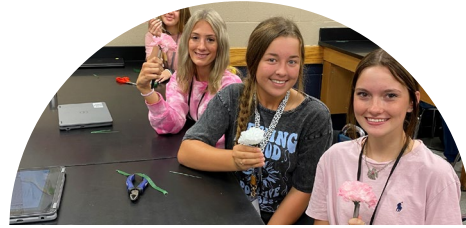
## Meeting 03



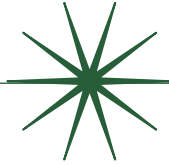
May 16, 2023 | 4:30 PM

# BOND STEERING COMMITTEE

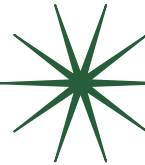
## MEETING 03 AGENDA



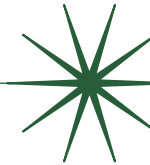
Review & Recap



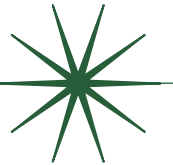
Facility Condition  
Assessment  
*Continued*



Focus Session:  
Safety & Security



Focus Session:  
CTE



Focus Session:  
Junior High /  
Elementary School  
Growth

*\*Focus Session Orders will vary per Group*

# REVIEW / RECAP

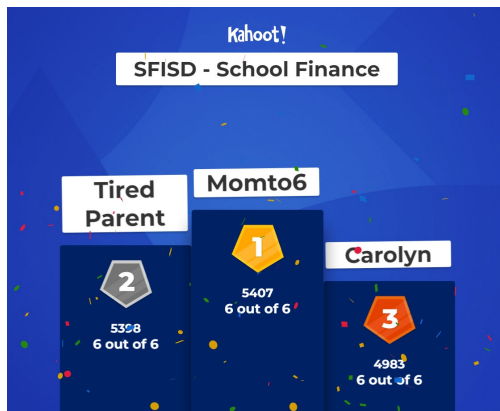




# MEETING 02

## AGENDA

1. Review / Recap
2. School Finance 101
3. Facility Condition Assessment





# Purpose

## Bond Steering Committee



The purpose of the Bond Steering Committee is to review and consider information related to:

- Needs of Students
- Demographic Projections
- Existing Condition of Facilities
- Support for Quality Educational Programs
- Comprehensive District Goals
- Impact on Santa Fe Taxpayer

The Committee will develop and recommend a **potential bond program** that will help Santa Fe ISD meet the challenges of the future as well as support prospective growth and change.



# OUR PROMISE TO YOU

- **Respect** your time
- **Provide** you with all the tools you need
- **Adjust** plans based on your feedback
- **Ensure** the process is transparent
- **Answer** all questions and serve as a resource to you

# YOUR CHARGE

- **Review information** related to the District's facility needs, enrollment trends, and educational vision
  - **Prioritize student needs**
  - Develop a **fiscally responsible plan**
  - Work with the **"big picture"**
  - **Provide input** regarding District's facilities ability to support education in your community
  - Provide insight into what the **broader community** might support
  - Serve as **ambassadors** for the process and the proposed plan
- ...and hopefully **have fun!**



# COMMITTEE NORMS

- **Respect** each participant.
- **Listen** to each comment. One speaker at a time.
- Represent yourself and your community, but **work for the entire District**
- Respect those that have differing opinions and **seek first to understand**
- **Share** the process with the community
- **Trust** yourself and this team
- Actively **participate** by sharing your ideas, concerns, and questions.
- If you have a question, please **ask!**

**LET'S PLAY**

**Kahoot!**



# FACILITY CONDITION ASSESSMENT

---



# AGRICULTURAL CENTER WHERE WE STAND TODAY



**Year Built = 2010**



**Site Acreage = 18.61**



**Square Footage = 29,412**



# AGRICULTURAL CENTER STRENGTHS & OPPORTUNITIES

- Cattle (20) and hog (40) areas need to be expanded; reached capacity
- Feed lockers are completely full
- Cattle pens are rusting on the bottom
- Galvanized netting along roof insulation is deteriorating and needs to be replaced
- Aging watering equipment
- Interior paint refresh
- Trench drain covers were replaced 3 years ago
- EOC is located at the Ag. Center and additional parking could be useful



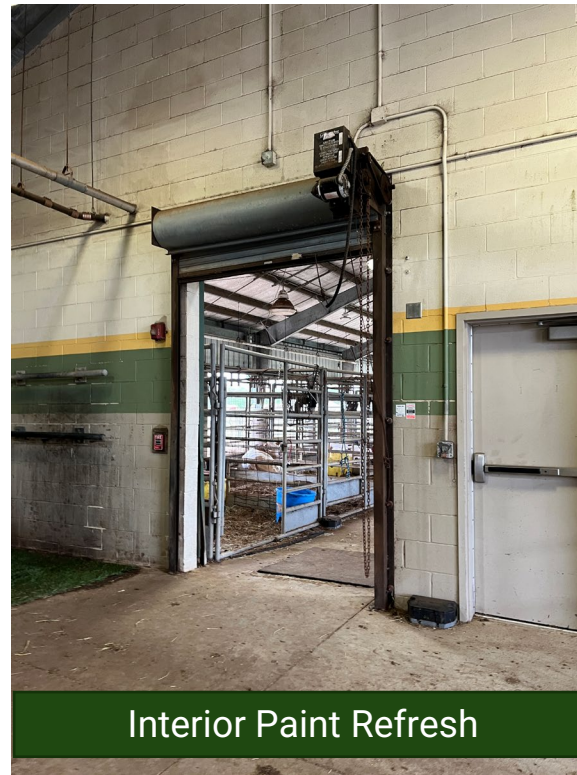
# AGRICULTURAL CENTER STRENGTHS & OPPORTUNITIES



Rusting Cattle Pens



Ag Classroom Upgrades



Interior Paint Refresh



Deteriorating Netting



# COWAN EDUCATION CENTER

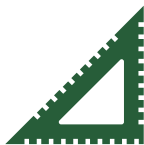
## WHERE WE STAND TODAY



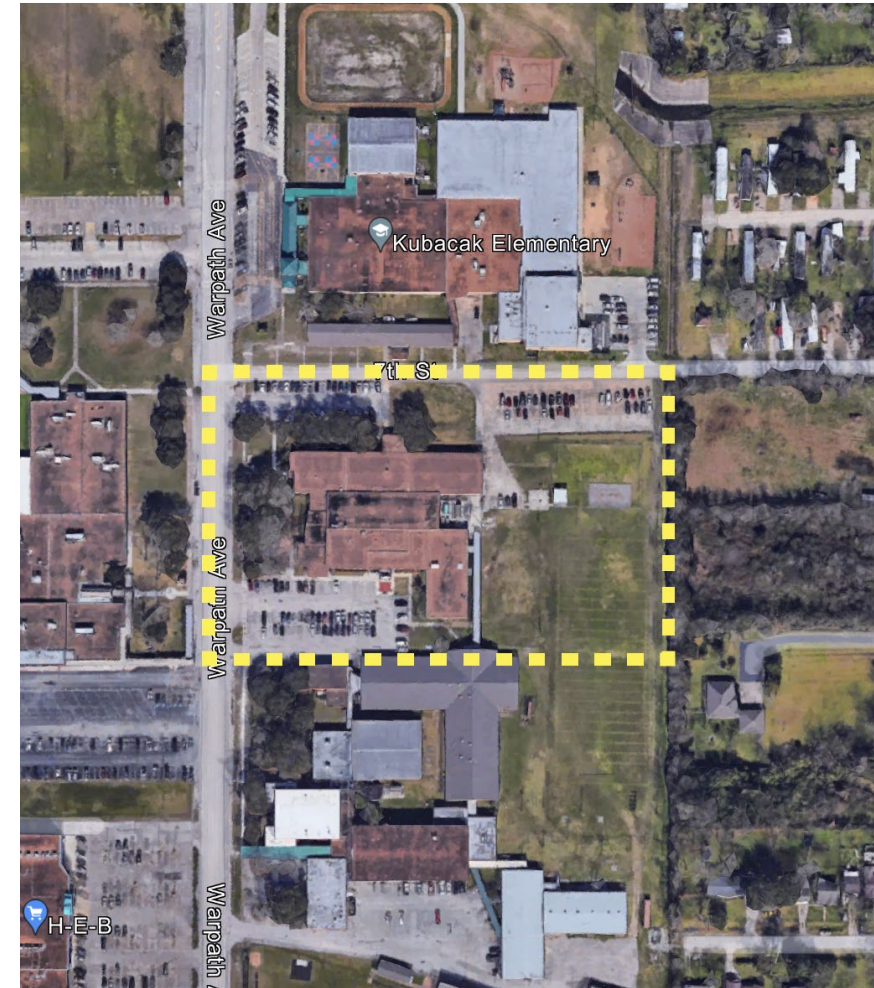
**Year Built = 1954**  
**Additions = 1964, 1985**  
**Renovated = 2012**



**Site Acreage = 5.94**



**Square Footage = 45,458**



# COWAN EDUCATION CENTER STRENGTHS & OPPORTUNITIES

- Houses District Administrative Staff and multiple Departments, including Technology, Nutrition Services, Police, and Print Shop
- Police Area is undersized for the number of facilities monitored and for the number of district police officers and staff
- Designated secure vestibule is needed
- Improved exterior wayfinding signage is recommended
- Remaining original windows should be replaced with energy efficient windows
- A/V Upgrades needed in Board Room and Training Rooms
- Condensing Unit replacement at Network Operations Center

# COWAN EDUCATION CENTER STRENGTHS & OPPORTUNITIES





# TRANSPORTATION CENTER WHERE WE STAND TODAY



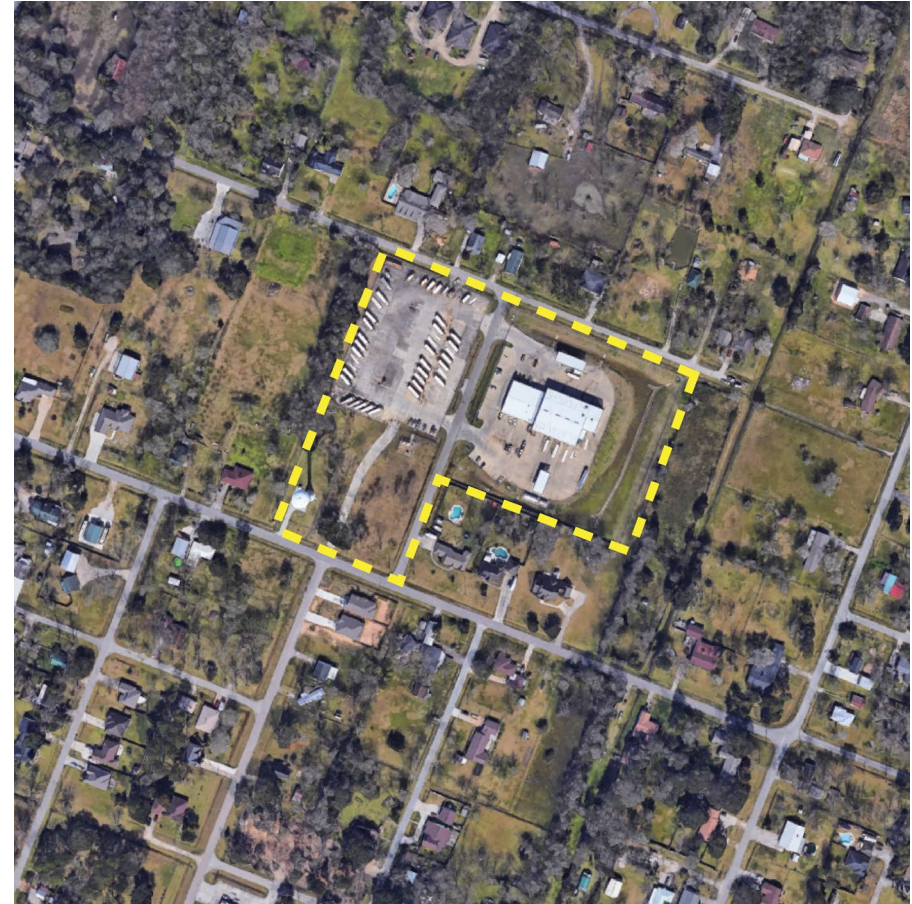
**Year Built = 2010**  
**Addition = 2012**



**Site Acreage = 7.36**



**Square Footage = 16,991**



# TRANSPORTATION CENTER STRENGTHS & OPPORTUNITIES

- Facility is in excellent condition, but is limited on space
- Additional bus work bay may be needed as student population grows (Currently have 4 bays)
- Additional bus parking may be needed as student population grows
- Bus wash replacement needed due to end of useful service life
- Main HVAC Unit replacement needed due to end of useful service life
- LED lighting upgrades (Interior and Exterior)
- Replace galvanized piping within sanitary lift station



# TRANSPORTATION CENTER STRENGTHS & OPPORTUNITIES



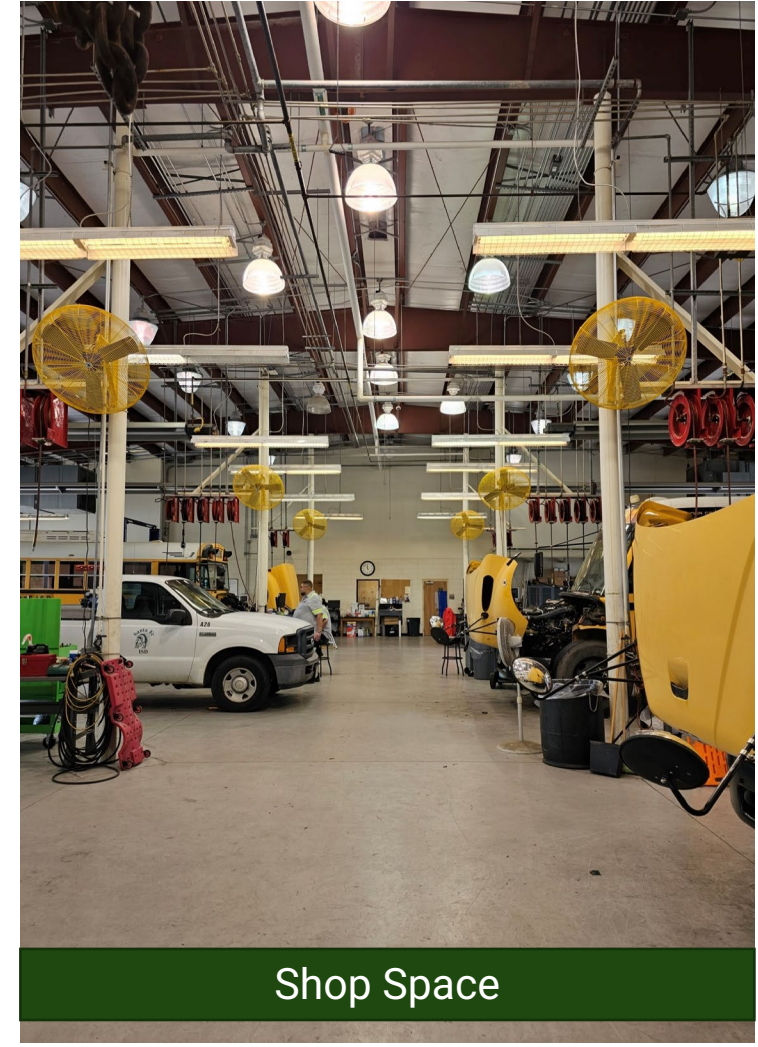
Bus Wash



Additional Bay Could Be Added



Bus Bay in Good Condition

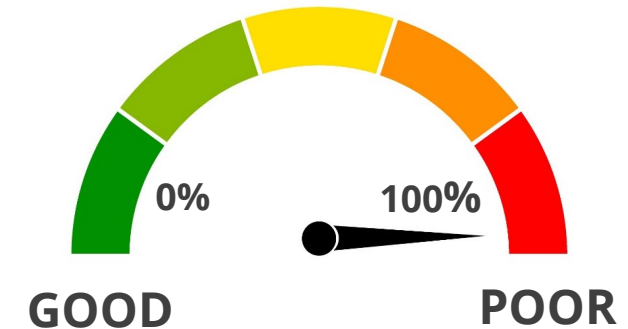


Shop Space

# Facility Condition Index (FCI)

$$\text{FCI} = \frac{\text{total cost of existing deficiencies}}{\text{current replacement value}}$$

- An industry-standard measure used to compare relative building conditions
- Intended to be used as a tool only and not the sole determining factor in decisions; FCI helps weigh options in terms of renovating or replacing the facility
- 1:1 Replacement
- The lower the FCI, the better the condition of the building and the lower the need for remedial/maintenance work.
- An FCI of **60%** means that an investment of **60%** of the building's total cost is needed in order to keep the facility in working order.





# FOCUS SESSIONS

---



# **JUNIOR HIGH & ELEMENTARY SCHOOLS**

# RESULTS & YOUR IDEAS

In the context of a Long-Range Facility Plan, what would you like to see or consider in relation to...



EDUCATIONAL PROGRAMS



FACILITY IMPROVEMENTS



SAFETY & SECURITY



TECHNOLOGY



COMMUNITY & NEIGHBORHOODS



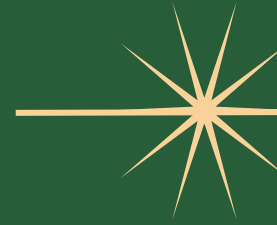


# EDUCATIONAL PROGRAMS & FACILITY IMPROVEMENTS

- A New 5<sup>th</sup>/6<sup>th</sup> Grade Center / New Intermediate School to alleviate overcrowding at Junior High ★
- A New Junior High with room for growth; Facility Improvements at the Junior High ★
- Replacement Furniture at existing Junior High; Renovated Restrooms at the existing Junior High
- Elementary Modernization; Replacement of Capital Equipment that has reached its end of service life
- More Gym Space; No portable buildings
- New playgrounds at Wollam ES; A/C at Kubacak Elementary
- **Additional Facilities to Address Growth & New Neighborhoods**
- Add necessary facilities where it provides the best use of existing facilities in coordination with existing
- Enough Student Capacity to Accommodate new Subdivisions
- Vertical alignment of curriculum and transition between campuses
- **Maintain Small Class Size, especially at the Elementary Level**
- More available education programs and qualified teachers to provide support
- Improve or make necessary additions to accommodate student learning at all grade levels

# Santa Fe Junior High

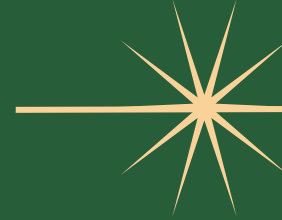
## Dr. Flo Adkins - Principal



SFJH Successes	SFJH Challenges
Great Camaraderie, Staff supports each other	Gym, Track, & Weight Room
Continued Academic improvement	Cafeteria, Rest Room, and Front Office Renovation/Reconfiguration
Community Involvement (lunches, Father- Daughter Dance, Mother-Son laser tag)	Expansion of CTE Opportunities (ex: principals of construction, culinary arts)
Staff effectiveness (ex: metal detectors, school/community involvement)	Library Upgrades (Media Center)
Athletic Programming	Clinic Space Inadequate
Parents on Patrol	Special Service Needs (ex: additional life skills, ABC class, brain break lab)
GREAT hiring season	Portable Buildings (safety, logistics, & staff isolation)

# Barnett Elementary

## Destini Martin - Principal



Barnett Successes	Barnett Challenges
New Technology and Furniture	WE ARE REACHING CAPACITY! This will result in:
Inviting/Colorful/Open Environment	Portable buildings
Safe Vestibule	Larger class sizes
Hard working/Caring Staff	Overcrowded cafeteria, gym, playgrounds (safety)
Smooth arrival/dismissal	More discipline issues
Academic Achievements	Overwhelmed teachers
Positive Behavior and Character Development Systems	Traffic issues during arrival/dismissal



**SAFETY & SECURITY**

# RESULTS & YOUR IDEAS

In the context of a Long-Range Facility Plan, what would you like to see or consider in relation to...



EDUCATIONAL PROGRAMS



FACILITY IMPROVEMENTS



SAFETY & SECURITY



TECHNOLOGY



COMMUNITY & NEIGHBORHOODS



# SAFETY & SECURITY

- Security Vestibules at campuses that do not have them
- Cameras covering all areas of schools
- Equitable safety / security improvements at all campuses, but particularly Wollam, Kubacek, Junior High School ★
- More armed guards
- Address security issue with Junior High School PE; Junior High School Track within Fence ★
- PA system with panic buttons
- Biometric entry
- Metal Detectors outside of buildings





# **Santa Fe ISD Police Department**

## **Currently**



### **Department Staffing**

- **11 - Full-time Police Officers**
- **7 - Campus Safety Assistants.**  
( 2 full-time live camera monitoring CSA's)
- **4 - Part-time Police Officers**
- **1 - Police Dispatcher / Administrative Assistant**
- **2 - Crossing Guards**

### **Police Offices**

- **1 Main Police Office at Administration building**
- **3 Police Offices at the High School.**
- **1 Police Office at Jr. High School.**
- **1 Police Office at Kubabcak Elementary**
- **1 Police Office at RJ Wollam Elementary**
- **1 Police Office at Barnett Elementary**
- **0 Police Officer at DAEP/ALC**

### **Police Equipment**

- **12 Police Vehicles**
- **2 - 2018 Mules**
- **1 Golf Cart (Manuf. date 2000)**
- **1 Utility Trailer**



# **Santa Fe ISD Police Department**

## **Currently – Security Technology & Building Hardening**



- **23 Walk through Metal Detectors**
  - 9 - High School**
  - 6 - Jr. High**
  - 2 - Kubacak**
  - 2 - RJ Wollam**
  - 2 - Barnett**
  - 1 - DAEP/ALC**
  - 1 - Admin.**
- **Milestone video management system (VMS).**
- **Over 1000 camera lens district wide. Including 5 Axis 360 Network cameras with automatic patrol.**
- **Officer body worn cameras integrated with Milestone VMS.**
- **Facial Recognition software on limited cameras.**
- **Raptor Visitor Management System.**
- **“Tribal Tips” Anonymous Tip program**
- **Telecenter U Rauland Emergency Response System.**
- **Audio Enhancement - Safe system – limited areas.**
- **Dual Authentication door access system – limited areas.**



# **Santa Fe ISD Police Department**

## **Needs**



### **Police Office Needs**

- **Dispatch Center for dispatch console and TLETS System to meet industry's best standards practice.**
- **Conference room for training and meetings.**
- **Booking and interview room.**
- **Evidence room to meet industry's best practice standards.**
- **Surveillance monitoring room with sufficient space and out of view of public.**
- **Additional office space and officer at Jr. High.**
- **Additional office space and officer at DAEP/ALC.**

### **Police Equipment Needs**

- **Fleet replacement program to replace old police fleet vehicles.**
  - 1 - 18 yrs old**
  - 3 - 9 yrs old**
  - 3 - 7rs old**
  - 1 - 6yrs old**
  - 3 - 5yrs old**
  - 1 - 4yrs old**
- **Storage barn to house Mules, Golf Cart, Utility Trailer and other equipment.**
- **Simunition weapons for officer training.**



# **Santa Fe ISD Police Department**

## **Needs – Security Technology & Building Hardening**



- **Additional computer servers for video retention.**
- **Additional computer servers for enhanced video capturing at cameras capabilities.**
- **Electrical and data cables to exterior parking lot.**
- **Complete migration with S2 NetBox door access system.**
- **Axis Network Video Door Stations for all doors.**
- **Additional facial recognition licenses for additional cameras.**
- **Replacement program to replace outdated cameras.**
- **Audio Enhancement to complete the High School and Barnett Elementary.**
- **Audio Enhancement for Kubacak, RJ Wollam Elementaries and DAEP/ALC building.**



# **CAREER & TECHNICAL EDUCATION**

# RESULTS & YOUR IDEAS

In the context of a Long-Range Facility Plan, what would you like to see or consider in relation to...



EDUCATIONAL PROGRAMS



FACILITY IMPROVEMENTS



SAFETY & SECURITY



TECHNOLOGY



COMMUNITY & NEIGHBORHOODS



# EDUCATIONAL PROGRAMS

- Additional CTE Programs, Expanded CTE Facilities, CTE programs that are not at COM ★
- Additional STEM / STEAM Programs for all ages
- More non-collegiate opportunities; continued expansion of technical tracks for HS Students not targeting a 4-year College Education
- Better job communicating with 8th graders about the options available in HS (i.e. CTE, dual credit & collegiate)



# **AGENDA & OUTCOMES**

- **DEC 2021 Program of Study Survey Results**
- **May 2023 Junior High Interest Survey Results**
- **2022-2023 Enrollment**
- **Side by side of our labs vs. other labs**

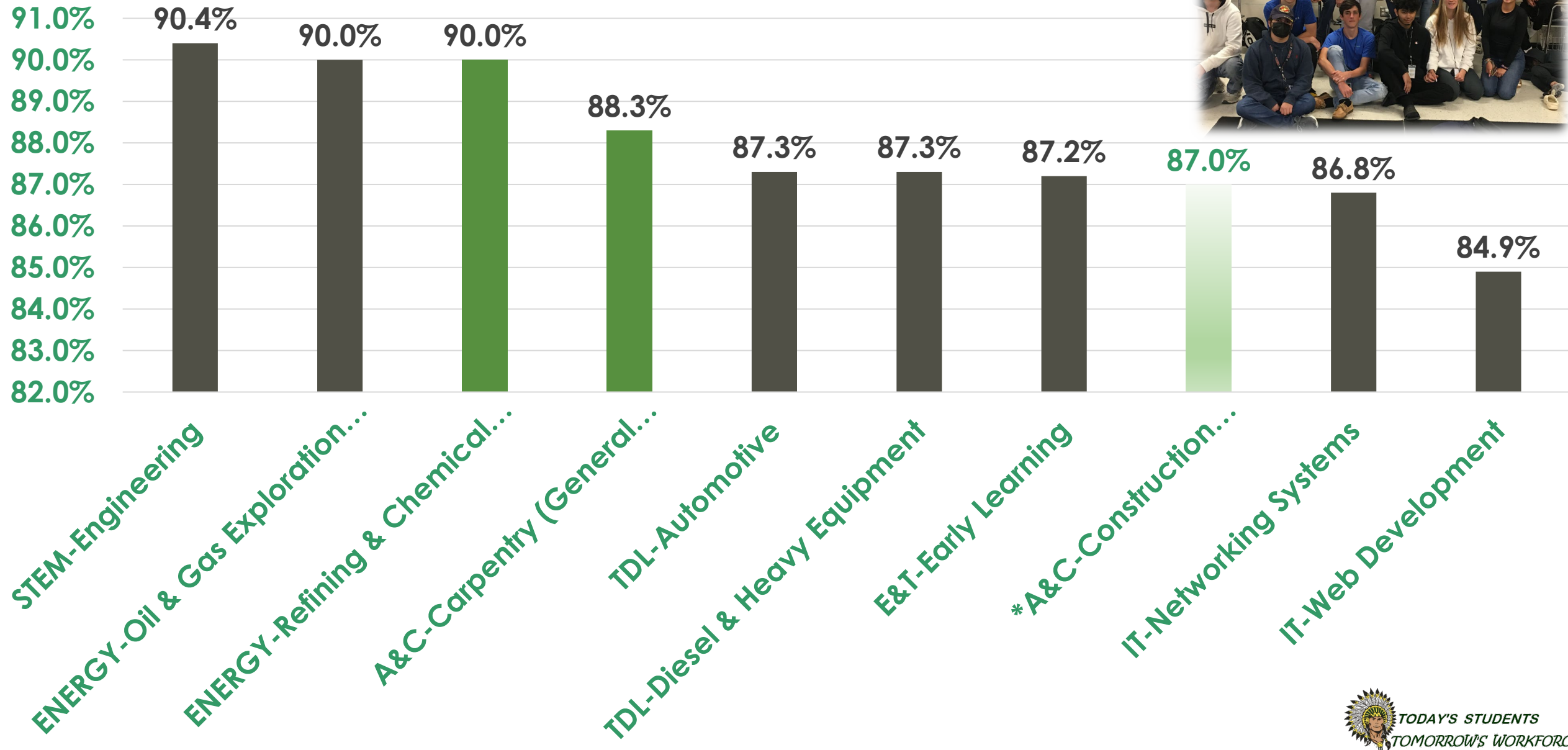
# SURVEY RESULTS

## TOP 10 PROGRAMS OF STUDY



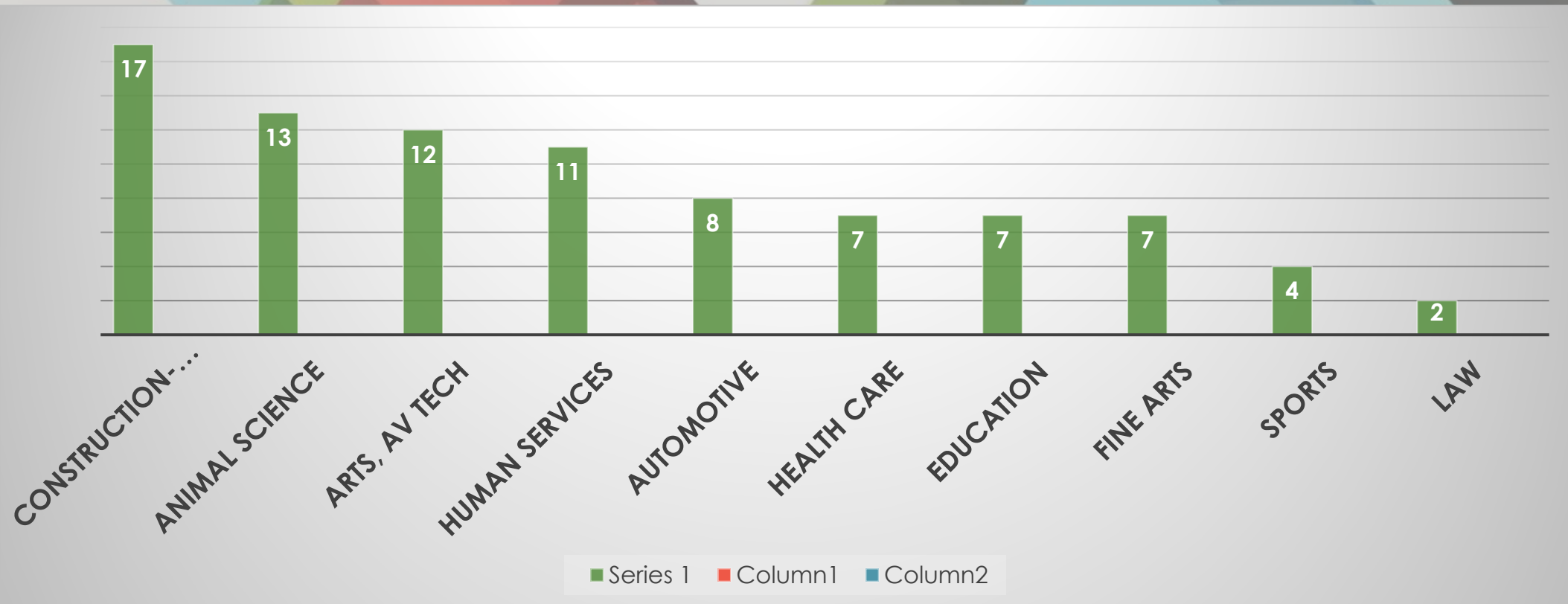
# SURVEY RESULTS

## #11-20 PROGRAMS OF STUDY

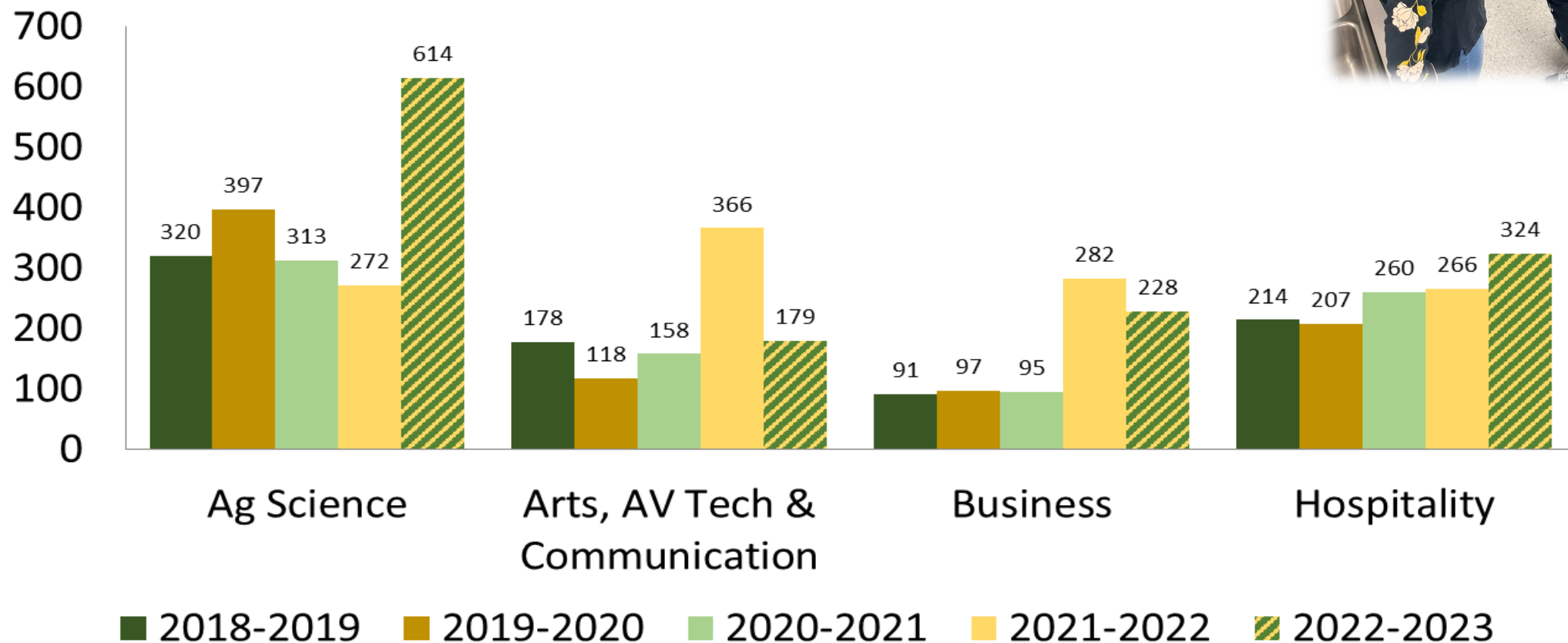




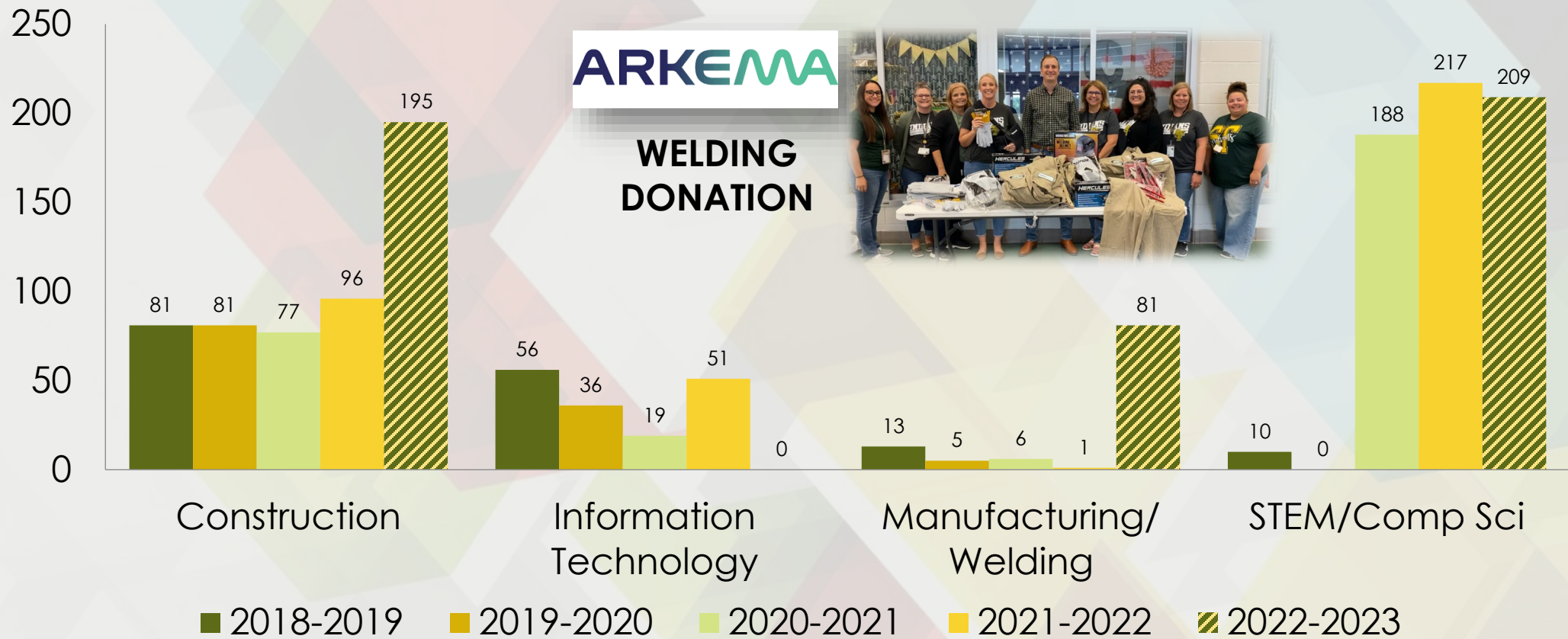
# 2023 JUNIOR HIGH CAREER INTEREST SURVEY



# CTE ENROLLMENT BUSINESS ENDORSEMENT



# CTE ENROLLMENT INDUSTRY & TECHNOLOGY

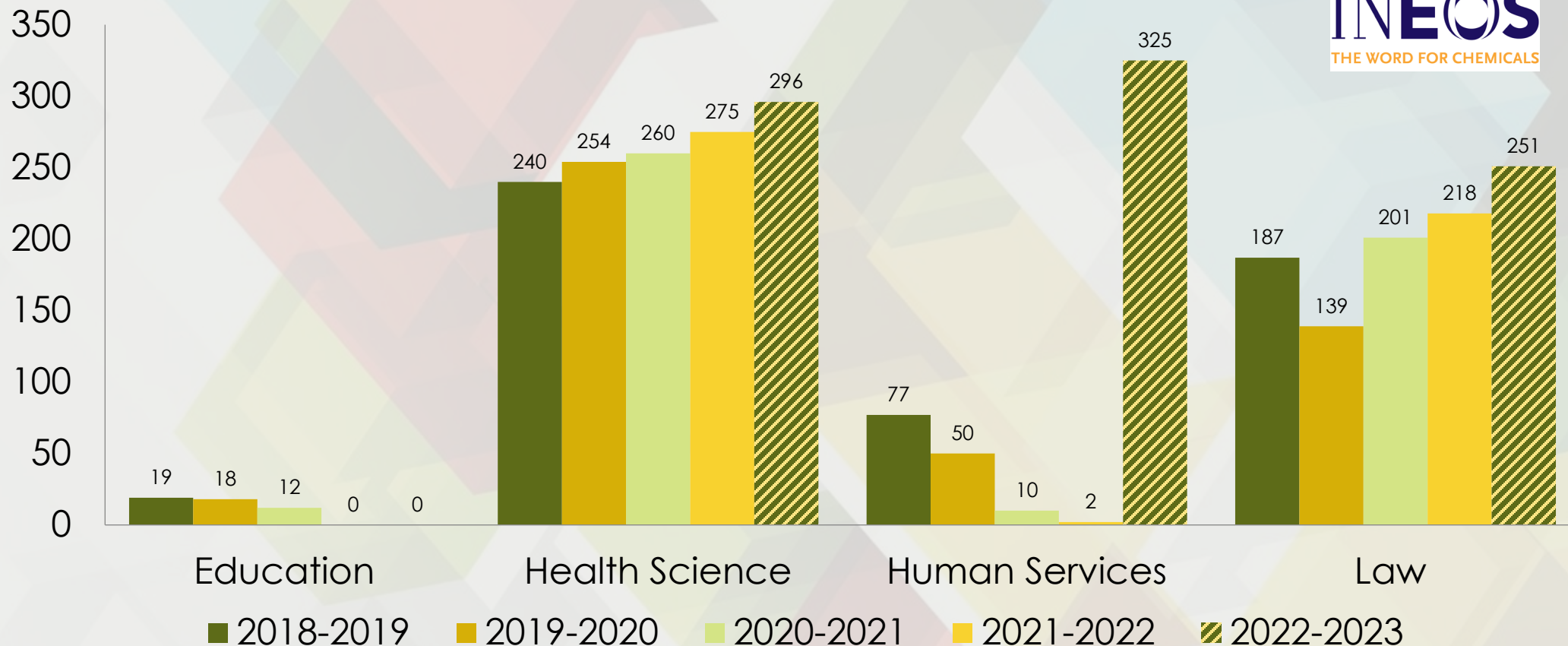




# CTE ENROLLMENT PUBLIC SERVICES



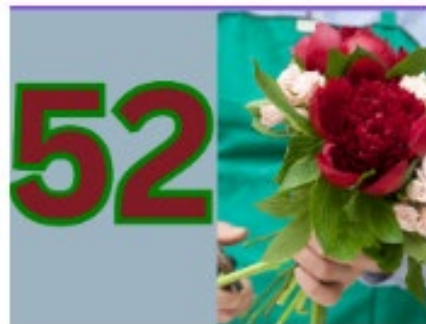
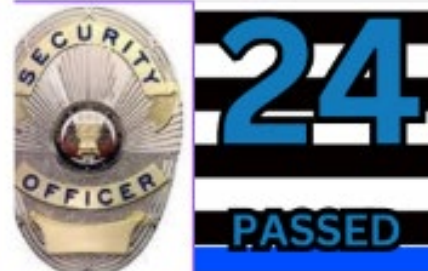
**INEOS**  
THE WORD FOR CHEMICALS





# Santa Fe ISD

INDUSTRY **158** CERTIFICATIONS





# CTE PRIORITIES

## CURRENT FACILITY UPGRADES (local / grant funds)

### PRIORITY 1 (In Progress)

- ☐ Applied Agricultural Engineering (Ag Lab to add Industrial Welding)
- ☐ Carpentry (Gen. Construction) (JET Grant) (Using Ag Science lab)
- ☐ Health Science Nursing Lab (JET Grant – Using former Science Lab)
- ☐ Education & Training Teaching Lab (2023 & 2024 Perkins)

### PRIORITY 2

- ☐ School Store temp location (Summer 2023) (CTE Discretionary-pay back)
- ☐ Culinary Arts (Current Lab & Temp restaurant setting in Advanced Classroom (Summer 2023 – 2024 Perkins)
- ☐ Graphic Design/Photography combined Mac Lab (scheduled-Tech Dept.)
- ☐ Computer Science reconfiguration (maybe summer 2023-Tech Dept)



# CTE PRIORITIES

## FACILITY UPGRADES (TBD)

### PRIORITY 3

☐ Graphic Design  
Computer PC  
Replacement

☐ JH Computer Lab  
Replacement

☐ CTE Computer Lab PC  
Replacement

☐ Law Enforcement

- Traffic Stop Station
- Courtroom Station
- Jail Processing Area

☐ Vet Med Lab equipment

☐ Green House Renovation

☐ Health Science Lab-  
Nursing Station



# CTE PRIORITIES

## NEW CONSTRUCTION / MAJOR RENOVATIONS

### PRIORITY 1

- ☐ Culinary Arts / Restaurant Mgmt. (current lab continues as Intro Lab/ Food Science/ Lifetime Nutrition)
- ☐ Welding Lab + 2 CR (Intro & Reg) (return Ag Mech Lab to AG Dept.)
- ☐ Construction Lab + 2 CR (return Ag Animal Lab to Ag Dept.)

### PRIORITY 2

- ☐ Animal Science -Veterinary Technician Lab
- ☐ STEM-Engineering
- ☐ Ag Science Center Expansion
- ☐ Junior High Construction/Human Services Labs



# CTE PRIORITIES

## NEW CONSTRUCTION / MAJOR RENOVATIONS

### PRIORITY 3

- ☐ Diesel/Med-Heavy Truck Lab/CR
- ☐ Law Enforcement
  - Obstacle Course
  - Gun Range
- ☐ Floral Design downstairs (Exterior Access, Near Greenhouse, floor drains and sinks, possible customer entry area)

### PRIORITY 4

- ☐ Build IT Networking/Computer Maintenance Lab
- ☐ Digital Communications (AV) Studio
- ☐ Cosmetology (Dual credit option)
- ☐ Energy Pathway (PTAC, I&E,)



# AG WELDING

Deer Park ISD



Santa Fe ISD



**(50 STUDENT COURSE REQUESTS / 58 COURSE SEATS)**



# WELDING

## Deer Park ISD



## Santa Fe ISD



**(160 STUDENT COURSE REQUESTS / 216 STUDENT SEATS)**



# CULINARY

## ALIEF ISD



## Santa Fe ISD



**(199 STUDENT COURSE  
REQUESTS / 281 STUDENT  
SEATS)**



# RESTAURANT

Katy ISD



Santa Fe ISD



(199 STUDENT COURSE REQUESTS / 281 STUDENT SEATS)



# ARTS, AV PRODUCTION & COMMUNICATIONS

Angleton ISD



Santa Fe ISD





# NEXT STEPS



# Ongoing Communications



Agendas, presentation slides, and supplemental information will be available online accessible through the District's homepage.

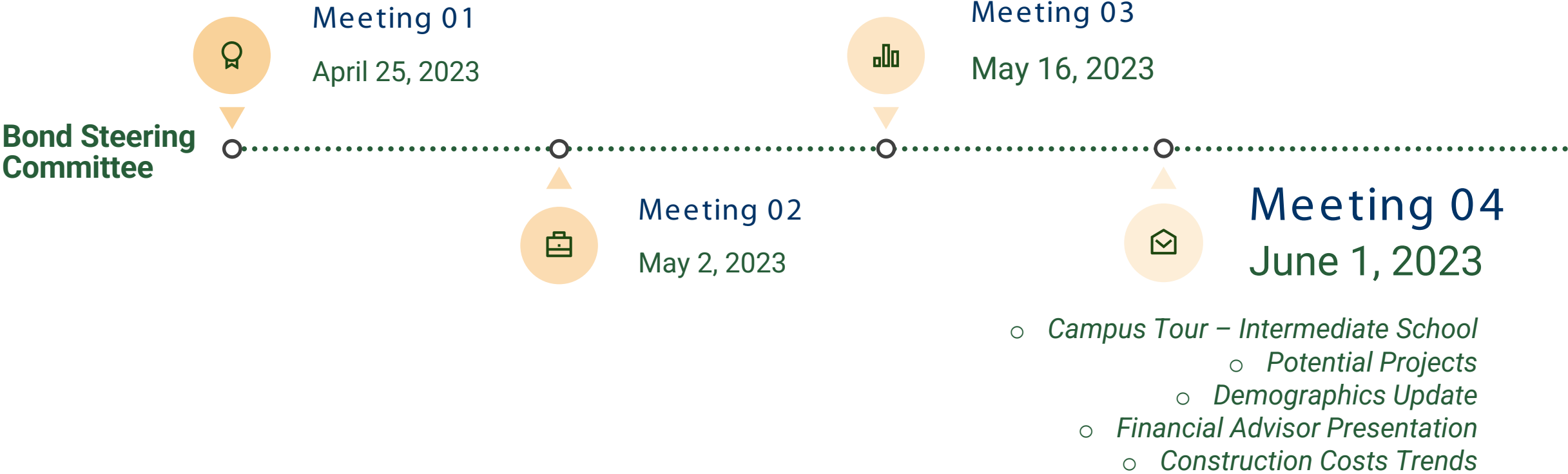
LEARN MORE



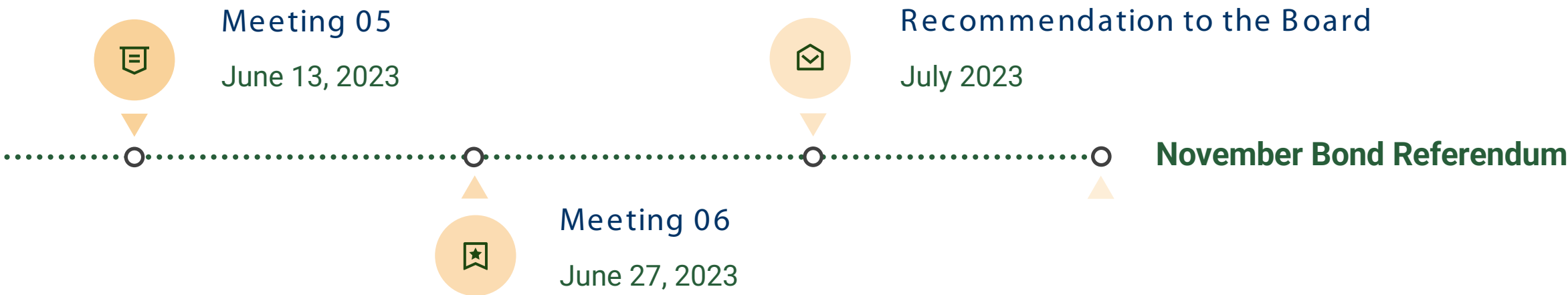


# BOND STEERING COMMITTEE SCHEDULE

Next Meeting



# BOND STEERING COMMITTEE SCHEDULE





**THANK YOU!**  
**QUESTIONS?**