



# Tolar Independent School District

## Demographic Report 2020/21



TEMPLETON  
DEMOGRAPHICS

hanleywood | metrostudy



# Annual Enrollment Change

Year (OCT)	EE	PK	K	1st	2nd	3rd	4th	5th	6th	7th	8th	9th	10th	11th	12th	Total	Total Growth	Total %
2016/17	0	21	51	45	51	59	60	61	65	60	57	73	66	62	60	791		
2017/18	1	38	32	58	50	52	67	59	67	67	55	57	67	65	52	787	-4	-0.5%
2018/19	1	40	55	44	64	56	55	70	55	70	61	59	53	58	56	797	10	1.3%
2019/20	1	41	53	55	49	66	56	55	67	56	75	66	57	48	56	801	4	0.5%
2020/21	3	36	51	60	57	44	62	60	55	70	58	74	69	57	50	806	5	0.6%

Yellow Box = largest grade per year  
Green Box = second largest grade per year

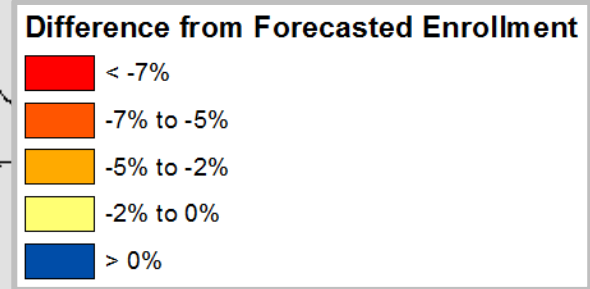
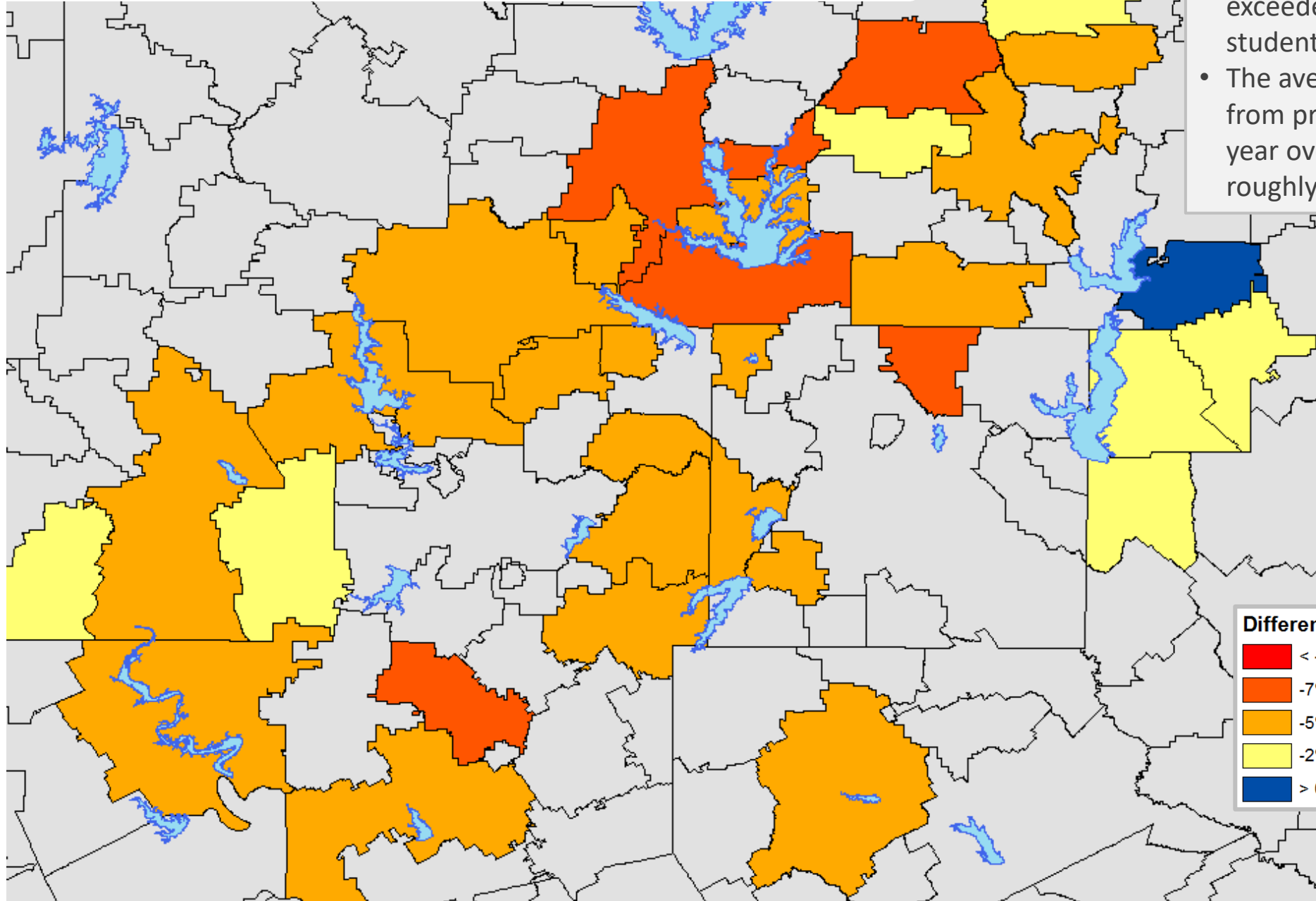
	K	1st	2nd	3rd	4th	5th	6th	7th	8th	9th	10th	11th	12th	ELEM	MID	HIGH
Prev 3 yr avg	1.215	1.169	1.084	1.016	0.999	1.039	0.963	1.036	1.006	1.047	0.980	0.924	0.956	1.087	1.002	0.977
2017/18	0.627	1.137	1.111	1.020	1.136	0.983	1.098	1.031	0.917	1.000	0.918	0.985	0.839	1.002	1.015	0.935
2018/19	1.719	1.375	1.103	1.120	1.058	1.045	0.932	1.045	0.910	1.073	0.930	0.866	0.862	1.237	0.962	0.932
2019/20	0.964	1.000	1.114	1.031	1.000	1.000	0.957	1.018	1.071	1.082	0.966	0.906	0.966	1.018	1.016	0.980
2020/21	0.962	1.132	1.036	0.898	0.939	1.071	1.000	1.045	1.036	0.987	1.045	1.000	1.042	1.007	1.027	1.018

- Tolar ISD added 5 students this fall for a 0.6% growth rate
- Many districts have experienced a drop in PK and KG enrollment due to a Covid impact



# Percent Difference from Projected Enrollment

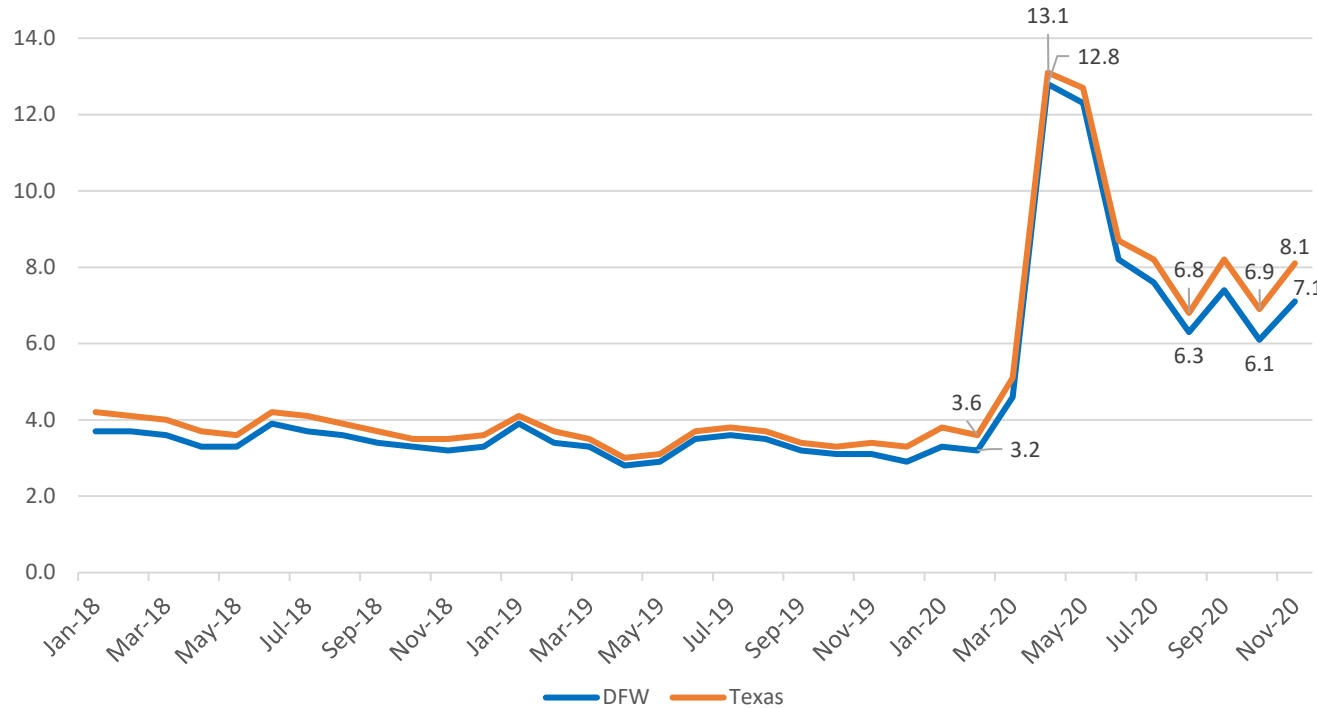
- Only 1 district in DFW has exceeded their forecasted student enrollment in 2020/21
- The average district is down 3% from projected enrollment, and year over year enrollment is roughly flat



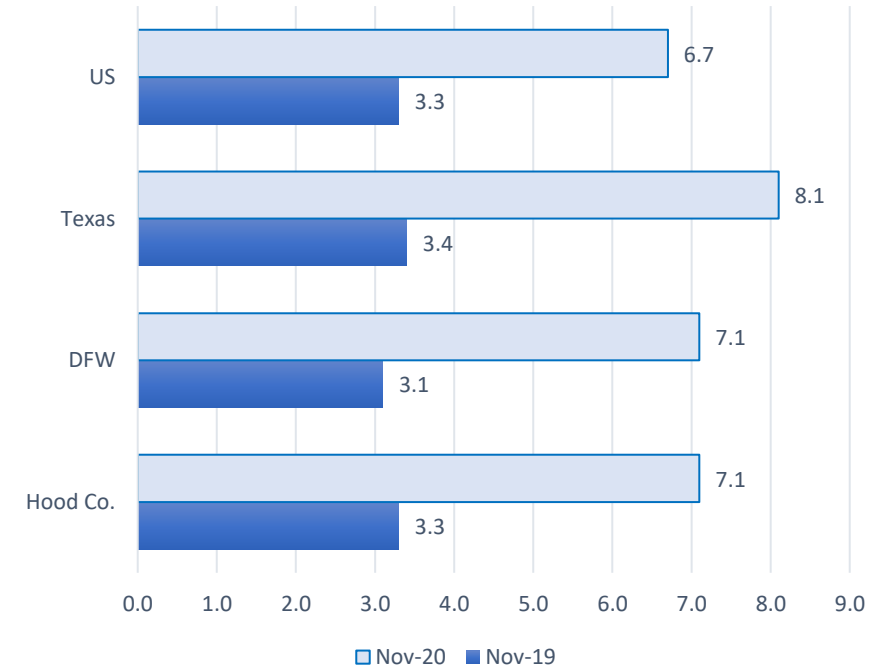


# DFW MSA Economic Conditions

Unemployment Rate, Jan 2018 - Nov 2020



Unemployment Rate, Year Over Year



- Texas' and DFW's unemployment rates peaked in May, began dropping in June, and have begun to trend back up in August and September
- Roughly 56% of the DFW job losses in May 2020 have been recovered



# District Demographic Snap Shot

2020 Total District  
Population Estimate

**2,312**

**-10.5%**

**2,575**

2010 Census  
District Population

2020 Total District Population  
Below Age 19

**626**

**-13.7%**

Census District Population  
Below Age 19

**725**

2020 Total District  
Median Household Income  
**\$70,277**

**34.2%**

2010 Total District  
Median Household Income  
**\$52,368**

2020 District Households  
**879**

**-10.5%**

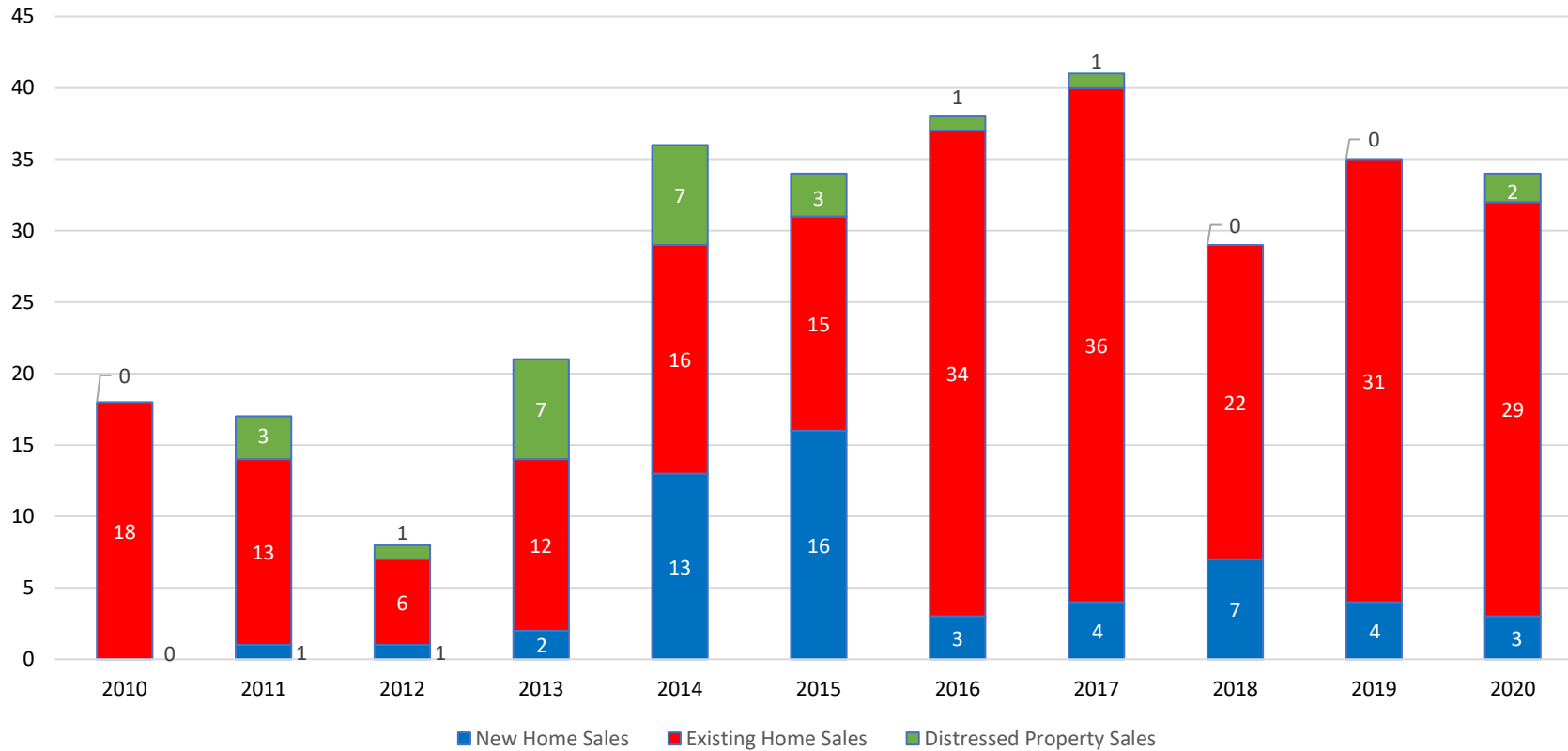
2010 District Households  
**982**



# Tolar ISD Housing Market Analysis

Home Sales by Transaction Type, 2010 – 2020

TISD Annual Home Sales

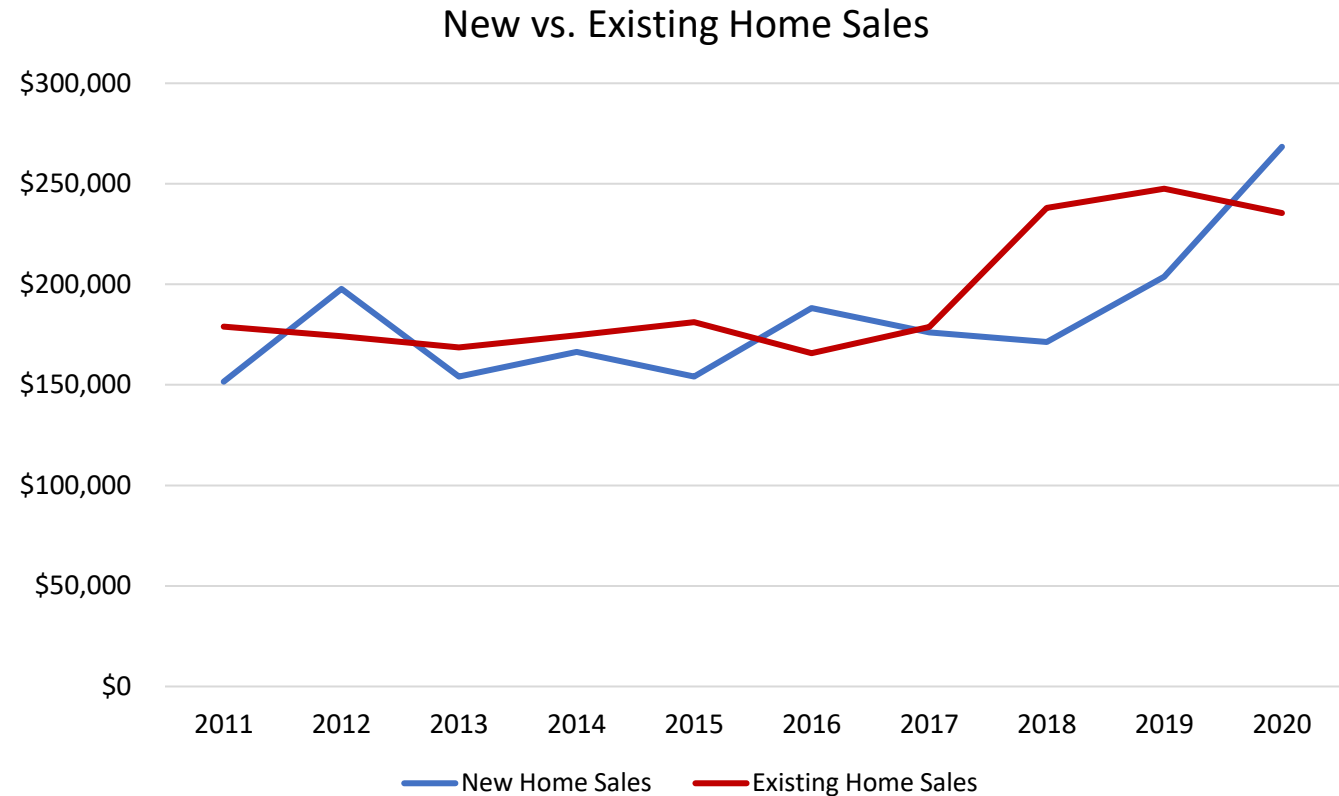




# Tolar ISD Housing Market

## Average New vs. Existing Home Sale Price, 2010 – 2020

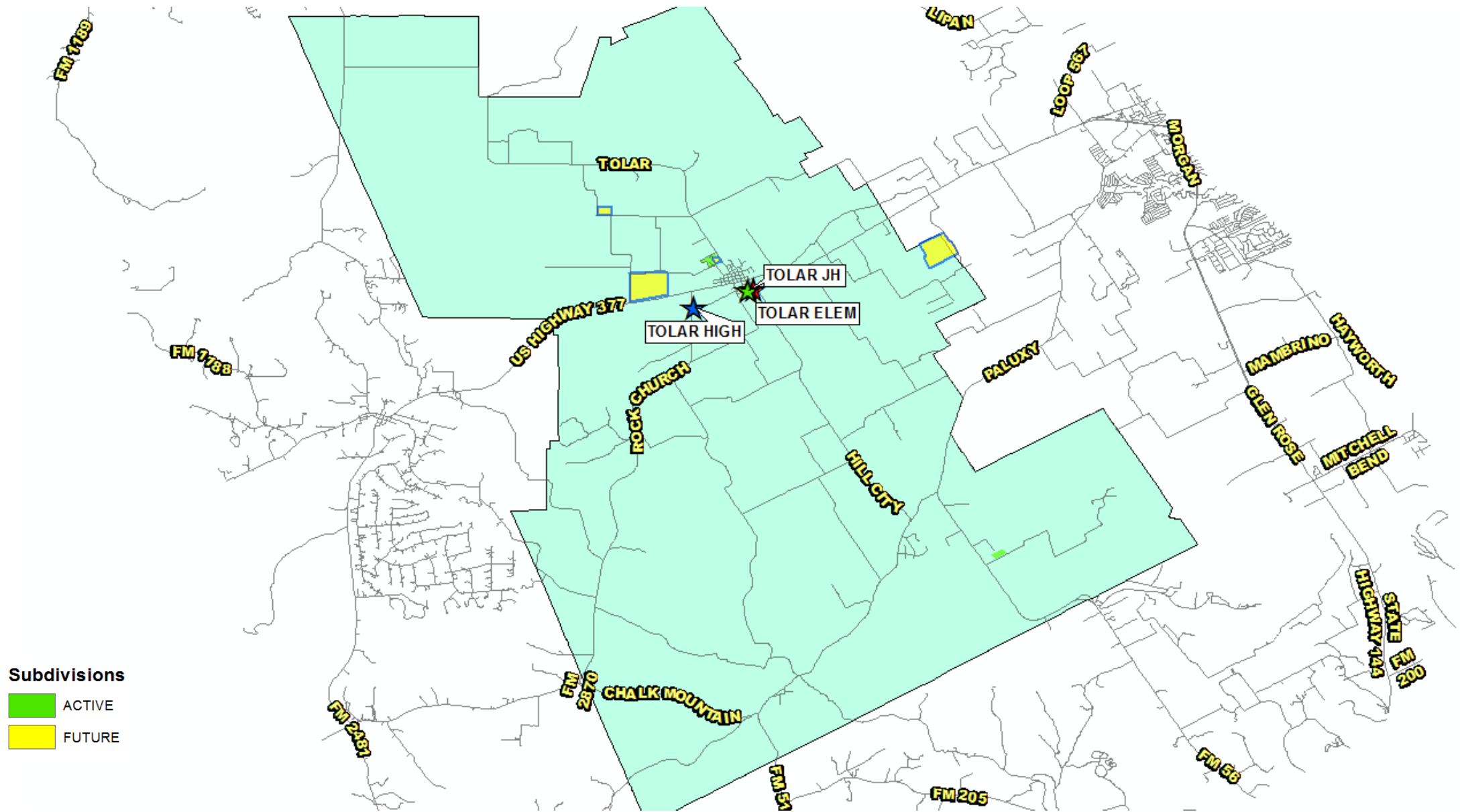
	New Home Sales	Existing Home Sales
2011	\$151,596	\$178,935
2012	\$197,718	\$174,188
2013	\$154,062	\$168,608
2014	\$166,306	\$174,716
2015	\$154,175	\$181,107
2016	\$188,111	\$165,801
2017	\$176,094	\$178,732
2018	\$171,248	\$238,079
2019	\$203,799	\$247,524
2020	\$268,360	\$235,470



- Since 2011, the average new home price in Tolar ISD has increased over 77%, an increase more than \$116,700
- The average existing home price within the district shows a rise of \$56,535 in the last ten years, up 32%



# District Housing Overview



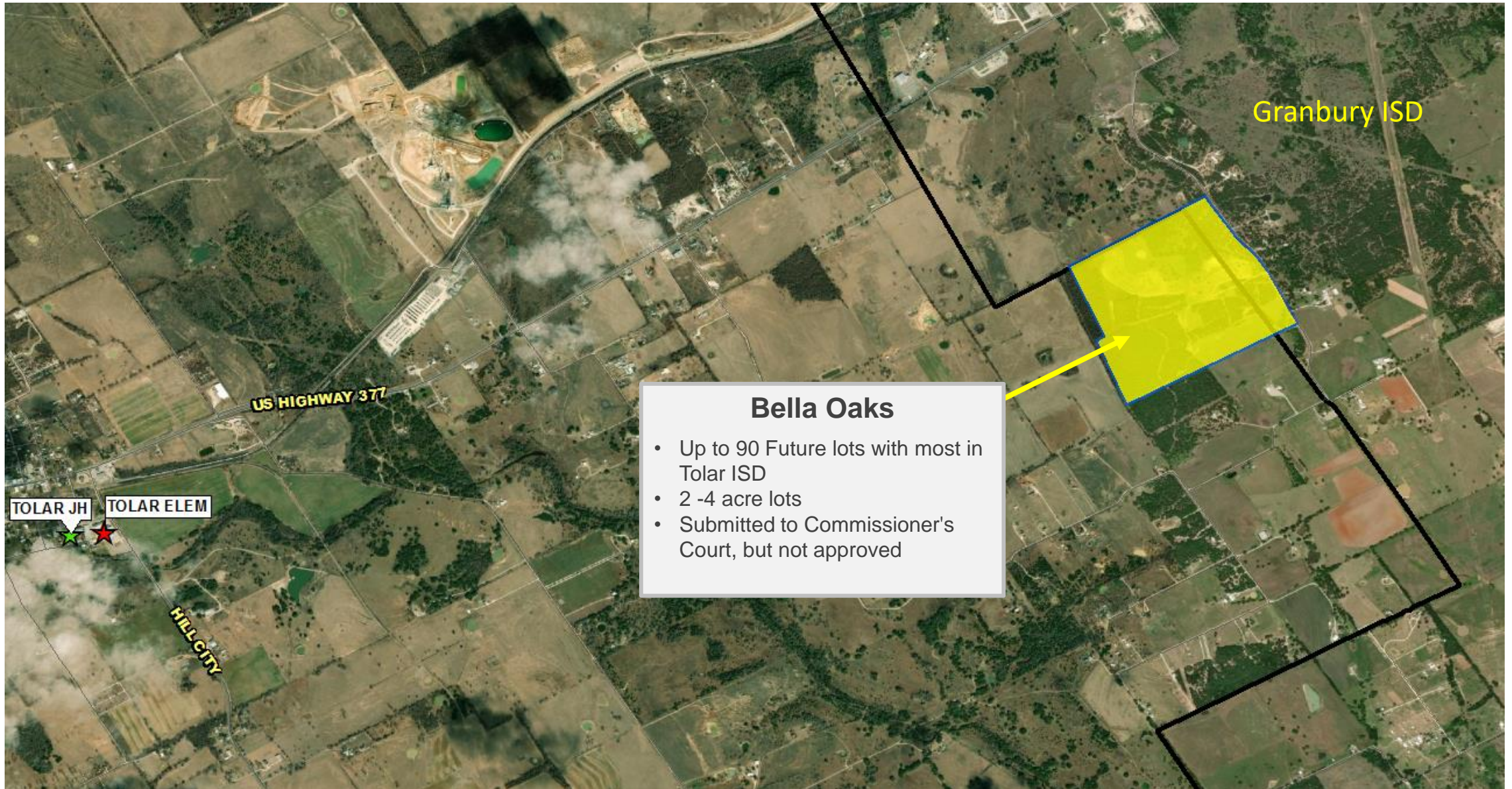
**Subdivisions**  
ACTIVE  
FUTURE







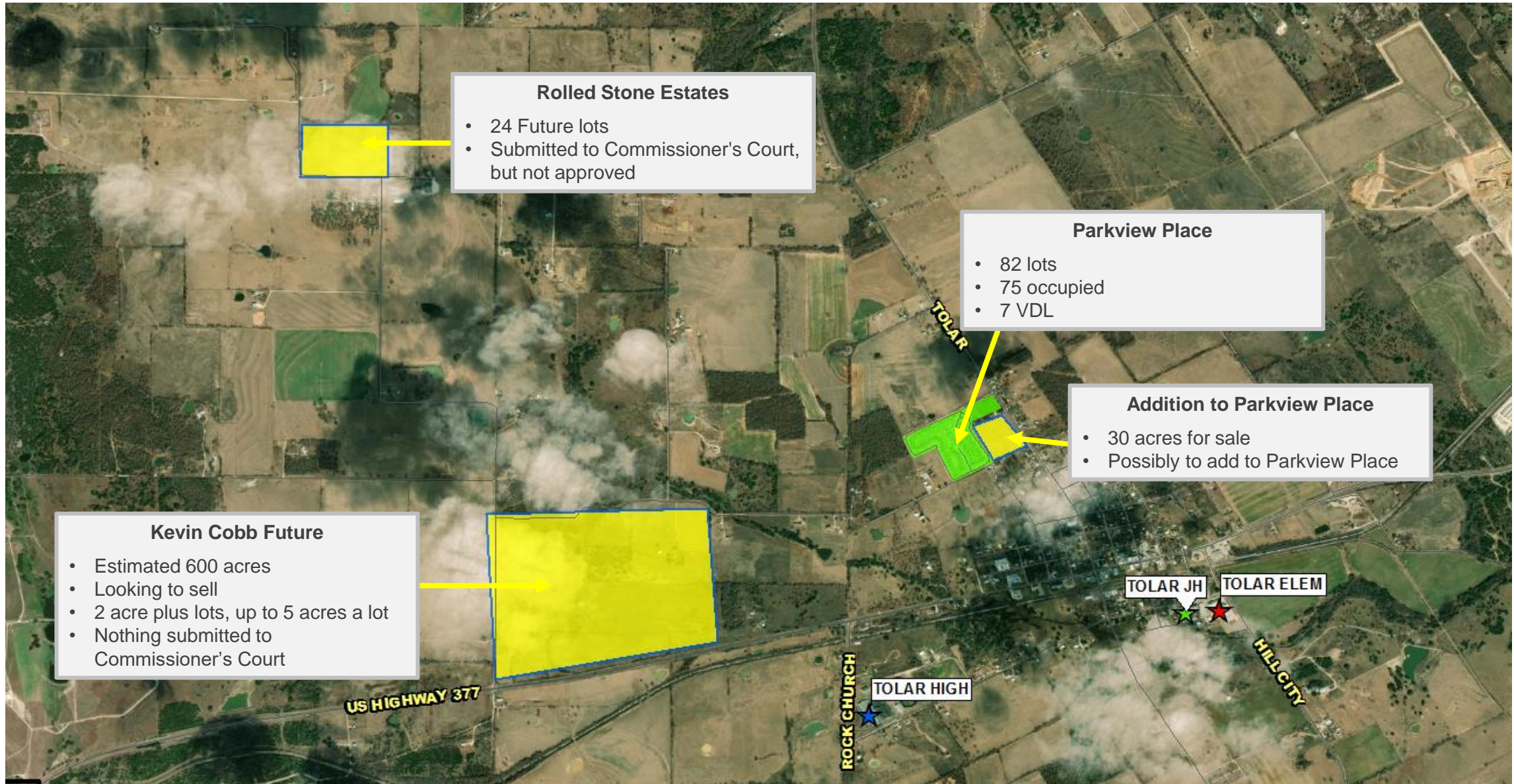
# Residential Activity





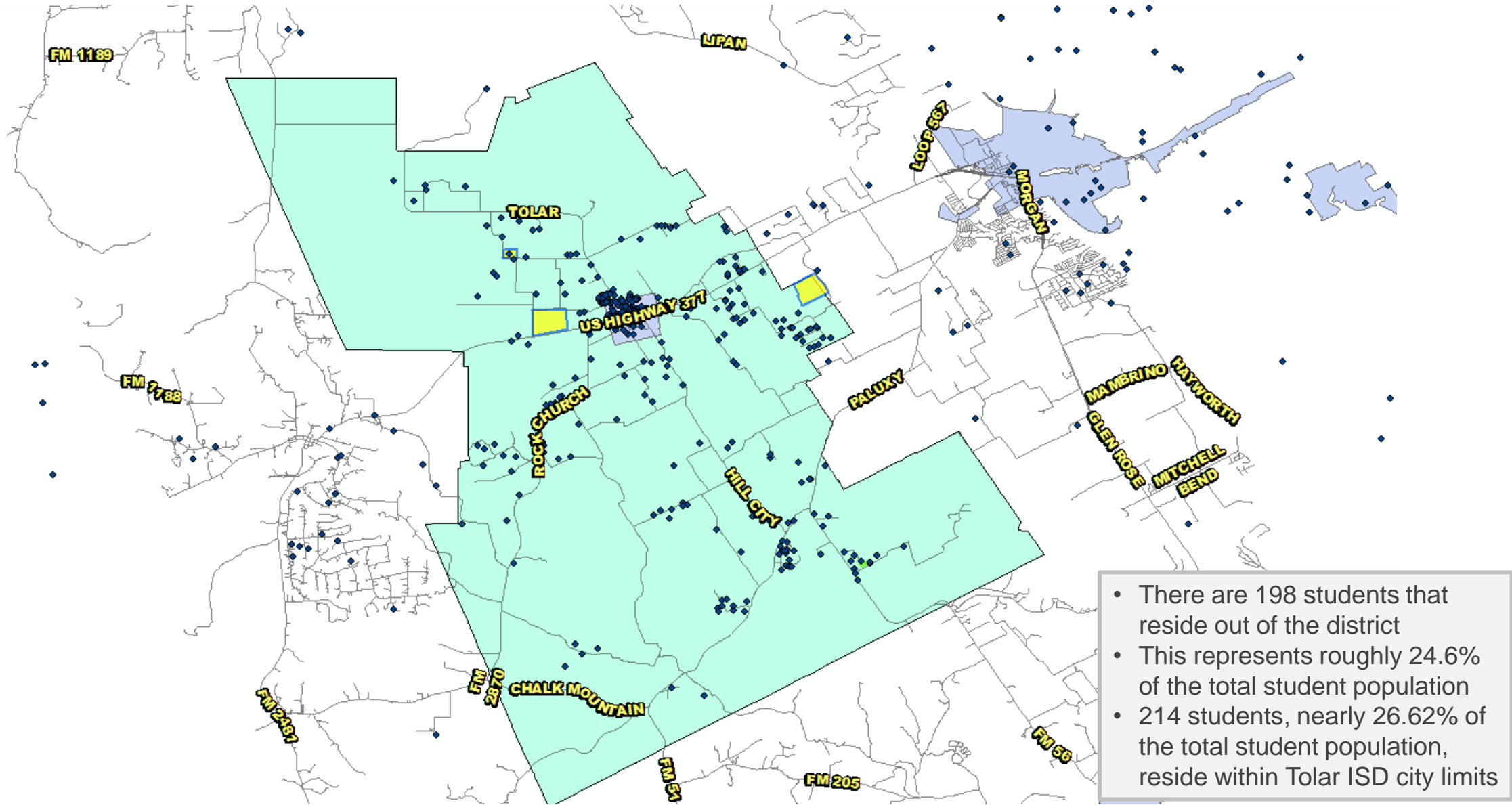


# Residential Activity





# Student Distribution





# TEA Transfer Report

Transfers In From	2014/15	2015/16	2016/17	2017/18	2018/19	2019/20	5 Year Change
Bluff Dale ISD	21	16	30	39	35	36	15
Granbury ISD	182	171	133	136	139	143	-39
Lipan ISD	11	6	6	3	3	11	0
Glen Rose ISD	0	3	0	3	3	3	3
Stephenville ISD	20	37	29	3	3	3	-17
<b>Total Transfers In*</b>	<b>241</b>	<b>233</b>	<b>206</b>	<b>200</b>	<b>192</b>	<b>199</b>	<b>-42</b>

Transfers Out To	2014/15	2015/16	2016/17	2017/18	2018/19	2019/20	5 Year Change
Bluff Dale ISD	3	3	3	12	12	3	0
Glen Rose ISD	5	5	9	3	3	3	-2
Granbury ISD	12	10	7	3	10	16	4
Lake Grandbury Academy Charter School	0	0	0	0	0	3	3
Premier High School	3	5	5	3	3	10	7
Stephenville ISD	0	0	3	3	0	3	3
<b>Total Transfers In*</b>	<b>29</b>	<b>23</b>	<b>28</b>	<b>30</b>	<b>38</b>	<b>48</b>	<b>19</b>

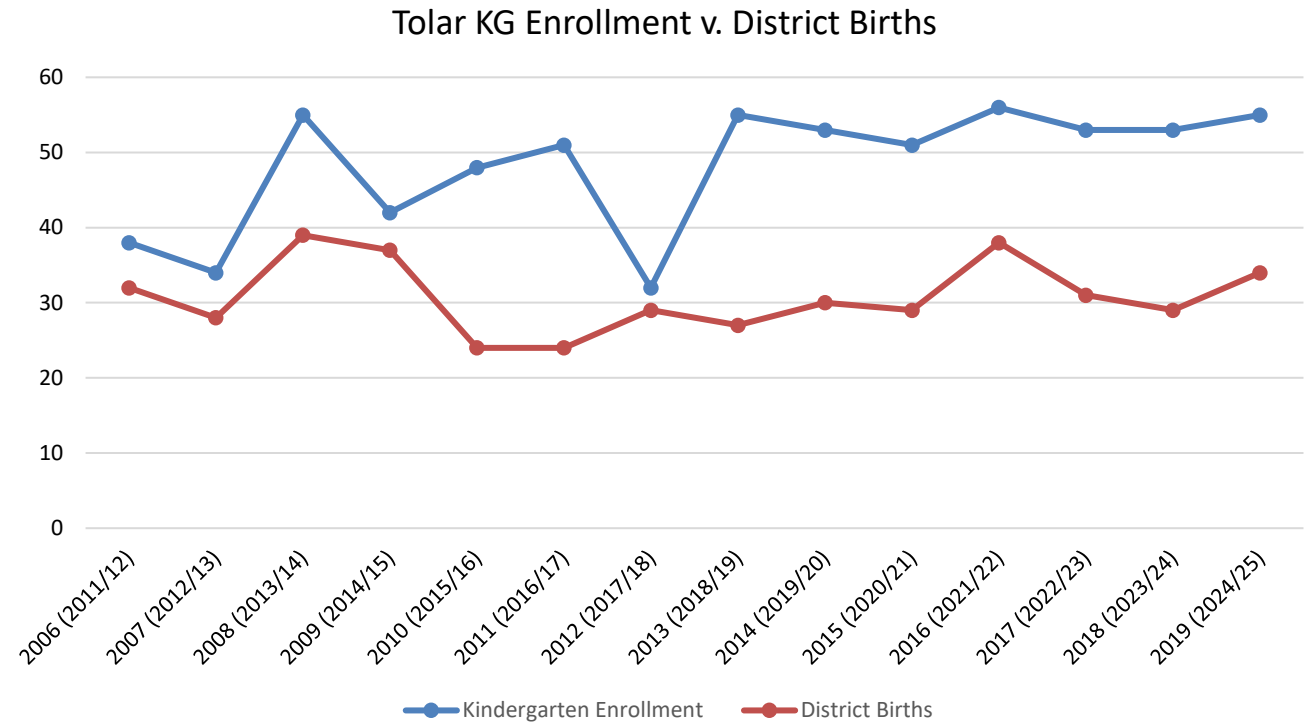
\* Totals include additional districts per TEA rounding rules





# Birth Rate Analysis

	Kindergarten Enrollment	District Births	Ratio
2006 (2011/12)	38	32	1.188
2007 (2012/13)	34	28	1.214
2008 (2013/14)	55	39	1.410
2009 (2014/15)	42	37	1.135
2010 (2015/16)	48	24	2.000
2011 (2016/17)	51	24	2.125
2012 (2017/18)	32	29	1.103
2013 (2018/19)	55	27	2.037
2014 (2019/20)	53	30	1.767
2015 (2020/21)	51	29	1.759
2016 (2021/22)	56	38	1.474
2017 (2022/23)	53	31	1.710
2018 (2023/24)	53	29	1.828
2019 (2024/25)	55	34	1.618





# Ten Year Forecast by Grade Level

Year (OCT)	EE	PK	K	1st	2nd	3rd	4th	5th	6th	7th	8th	9th	10th	11th	12th	Total	Total Growth	Total %
2016/17	0	21	51	45	51	59	60	61	65	60	57	73	66	62	60	791		
2017/18	1	38	32	58	50	52	67	59	67	67	55	57	67	65	52	787	-4	-0.5%
2018/19	1	40	55	44	64	56	55	70	55	70	61	59	53	58	56	797	10	1.3%
2019/20	1	41	53	55	49	66	56	55	67	56	75	66	57	48	56	801	4	0.5%
2020/21	3	36	51	60	57	44	62	60	55	70	58	74	69	57	50	806	5	0.6%
2021/22	3	42	56	59	67	58	44	63	57	57	71	62	73	64	56	832	26	3.2%
2022/23	3	40	53	59	64	68	59	45	61	59	59	77	59	69	62	837	5	0.6%
2023/24	3	40	53	59	67	62	67	60	44	63	61	63	74	56	63	835	-2	-0.2%
2024/25	3	41	55	59	66	67	62	68	58	45	65	65	61	70	54	839	4	0.5%
2025/26	3	41	55	60	66	66	69	63	66	60	47	70	62	58	66	852	13	1.6%
2026/27	3	42	56	61	67	67	66	70	61	68	57	50	67	59	54	848	-4	-0.5%
2027/28	3	40	53	62	68	67	68	67	68	63	69	61	48	63	54	854	6	0.7%
2028/29	3	44	58	58	69	68	68	69	65	70	63	74	59	45	59	872	18	2.1%
2029/30	3	44	59	64	65	70	69	69	67	67	69	68	71	56	42	883	12	1.3%
2030/31	3	45	60	65	71	65	71	70	67	69	68	74	65	67	52	912	29	3.3%

Yellow box = largest grade per year  
 Green box = second largest grade per year



# Ten Year Forecast by Campus

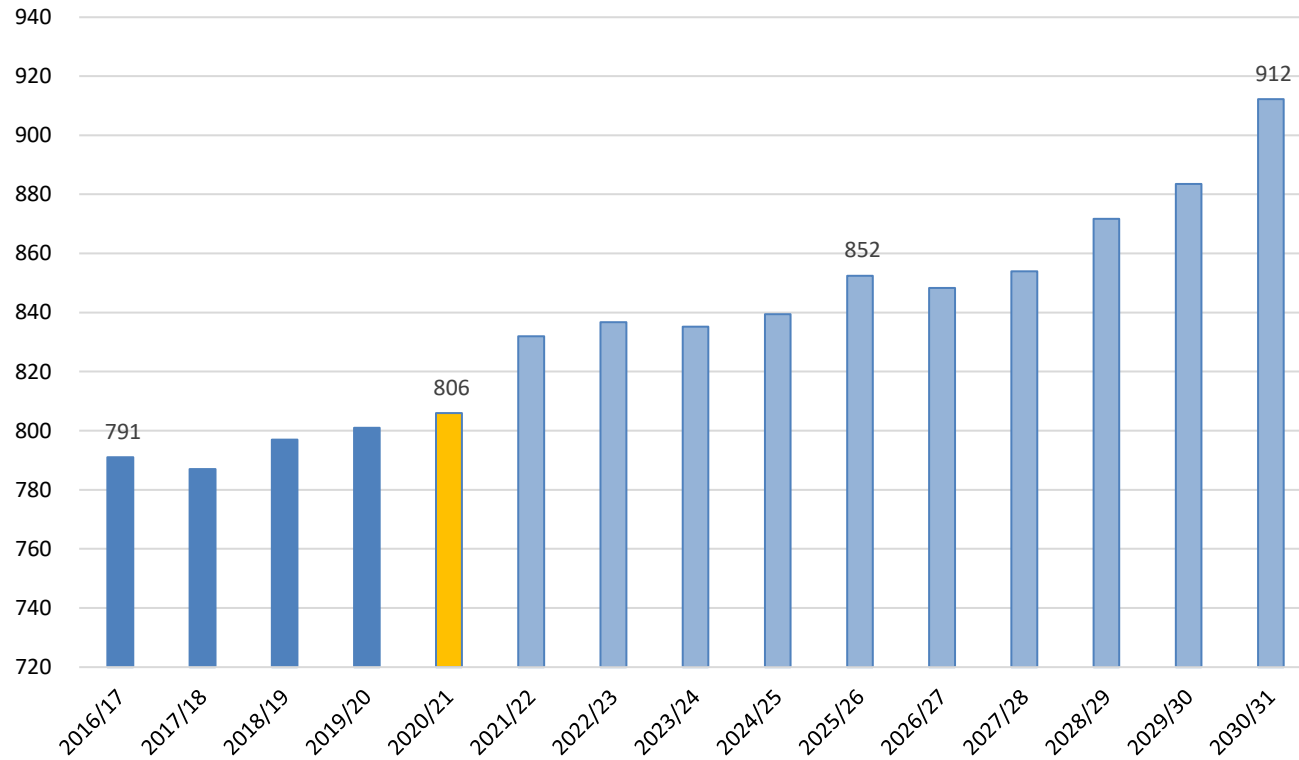
CAMPUS	2019/20	Fall	ENROLLMENT PROJECTIONS									
		2020/21	2021/22	2022/23	2023/24	2024/25	2025/26	2026/27	2027/28	2028/29	2029/30	2030/31
TOLAR ELEMENTARY	376	373	392	391	411	421	423	432	428	437	443	450
<b>ELEMENTARY TOTALS</b>	376	373	392	391	411	421	423	432	428	437	443	450
Elementary Absolute Change	9	-3	19	-1	20	10	2	9	-4	9	7	7
Elementary Percent Change	-2.34%	-0.80%	5.09%	-0.32%	5.22%	2.49%	0.49%	2.08%	-1.00%	2.05%	1.55%	1.52%
TOLAR JUNIOR HIGH	198	183	185	179	168	168	173	186	200	198	203	204
<b>JUNIOR HIGH TOTALS</b>	198	183	185	179	168	168	173	186	200	198	203	204
Junior High Absolute Change	12	-15	2	-6	-11	0	5	13	14	-2	5	1
Junior High Percent Change	6.45%	-7.58%	1.09%	-3.24%	-6.15%	0.00%	2.98%	7.51%	7.53%	-1.00%	2.53%	0.49%
TOLAR HIGH SCHOOL	227	250	255	267	256	250	256	230	226	237	237	258
<b>HIGH SCHOOL TOTALS</b>	227	250	255	267	256	250	256	230	226	237	237	258
High School Absolute Change	1	23	5	12	-11	-6	6	-26	-4	11	0	21
High School Percent Change	0.44%	10.13%	2.00%	4.71%	-4.12%	-2.34%	2.40%	-10.16%	-1.74%	4.87%	0.00%	8.86%
<b>DISTRICT TOTALS</b>	801	806	832	837	835	839	852	848	854	872	883	912
District Absolute Change	4	5	26	5	-2	4	13	-4	6	18	12	29
District Percent Change	0.50%	0.62%	3.23%	0.57%	-0.19%	0.51%	1.55%	-0.49%	0.67%	2.08%	1.35%	3.25%



# Key Takeaways



Enrollment Projections



- TISD closed 13 new homes in 2020
- The district is expected to close 15-20 homes per year over the next 5 years
- 5 year student growth of 46 students for a fall 2025 enrollment of 852
- 10 year student growth of 106 students for a fall 2030 enrollment of 912