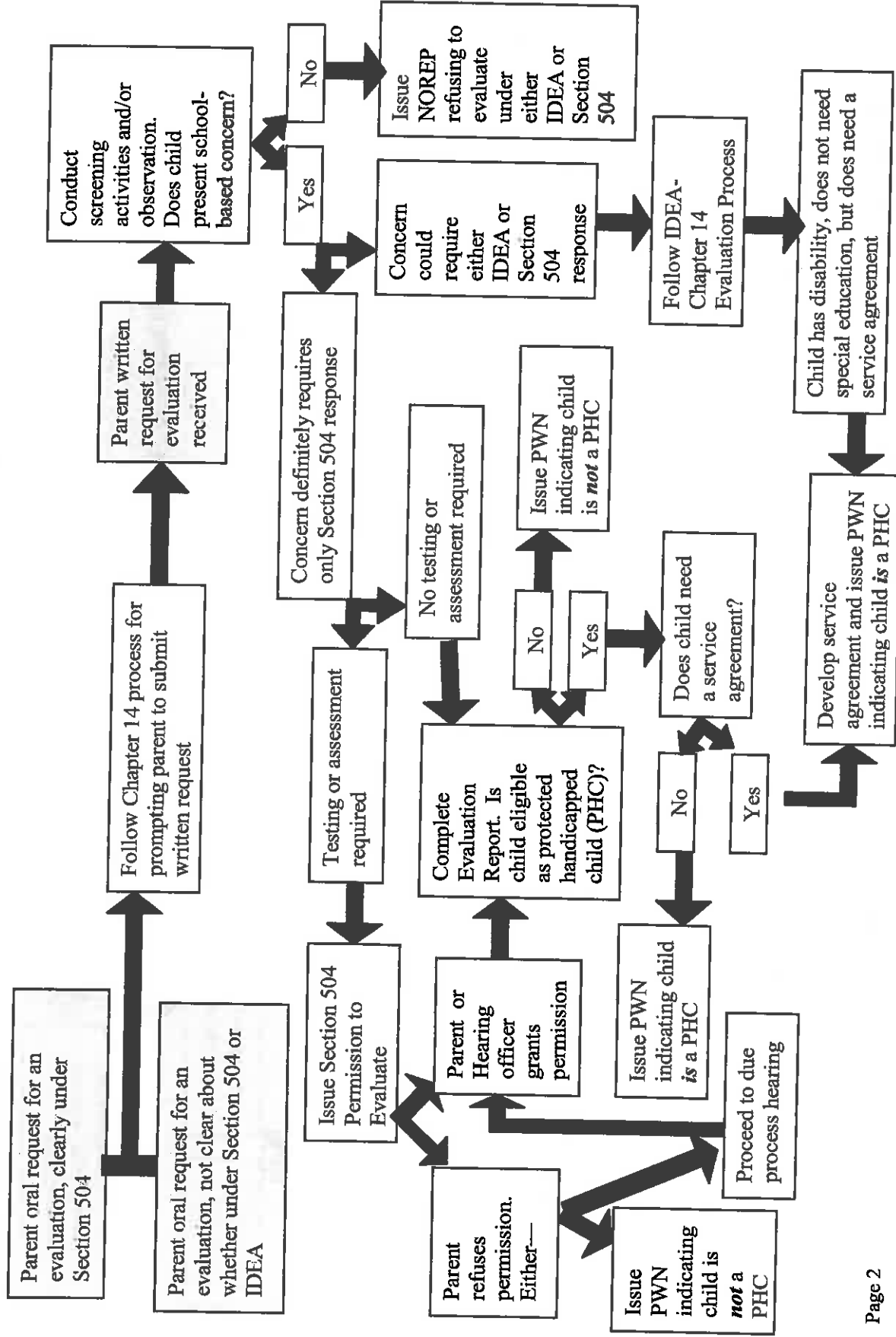


Section 504 Flow Chart

SWEET, STEVENS, KATZ & WILLIAMS LLP



1 If the child meets criteria for identification under one or more IDEA-defined disabilities and needs special education, follow the IDEA-Chapter 14 IEP development process and issue a NOREP indicating eligibility for special education. If the child does not have a disability under either Section 504-Chapter 15 or the IDEA-Chapter 14, issue a NOREP indicating ineligibility under either statutory scheme.

Section 504 Flow Chart

SWEET, STEVENS, KATZ & WILLIAMS LLP

