

LEA Name : Manheim Central SD
Address : 281 White Oak Rd
Manheim , PA 17545

County : Lancaster
AUN Number : 113364403
LEA Type : SD

Annual Financial Report
Accuracy Certification Statement
For Fiscal Year Ending
6/30/2019

Pennsylvania Department of Education
&
Office of Comptroller Operations

PDE-2056: Intermediate Unit
PDE-2057: School District, AVTS/CTC, Charter School,
and Special Program Jointure

CERTIFICATION: By signing this page I agree that the electronic data submitted is a complete and accurate statement of the financial operations and status of the local education agency for the fiscal year. It has been prepared in accordance with generally accepted accounting principles and established Commonwealth of PA reporting guidelines.



Chief School Administrator Signature

02 Jan 2020

Date



Board Secretary Signature

1-2-20

Date

Bryan Howett

Contact Person

(717)664-8522 Ext :

Contact Person Telephone Number

howettb@manheimcentral.org

Contact Person E-mail Address

(717)664-8528

Contact Person Fax Number

Audit Certification
Annual Financial Report:
For Fiscal Year Ending **6/30/2019**
(Pursuant to PA School Code Section 218(b))

LEA Name : Manheim Central SD
AUN Number : 113364403
County : Lancaster

Audit Certification Due: 12/31/2019

This certification is applicable to the Annual Financial Report data submitted through the Consolidated Financial Reporting System on: 11/19/19
Date

Auditing Firm:
BBD, LLC

CERTIFICATION: By signing this page I agree that the financial statements of the school have been properly audited as noted above pursuant to Article XXIV, and in the auditor's professional opinion, the Annual Financial Report (PDE-2057) submitted on the date referenced is materially consistent with the audited financial statements.

Chief School Administrator


Signature

19 Nov 2019
Date

Board Secretary


Signature

11/19/19
Date

Bryan Howett

Contact Person

howettb@manheimcentral.org

Contact Person E-mail Address

(717)664-8522

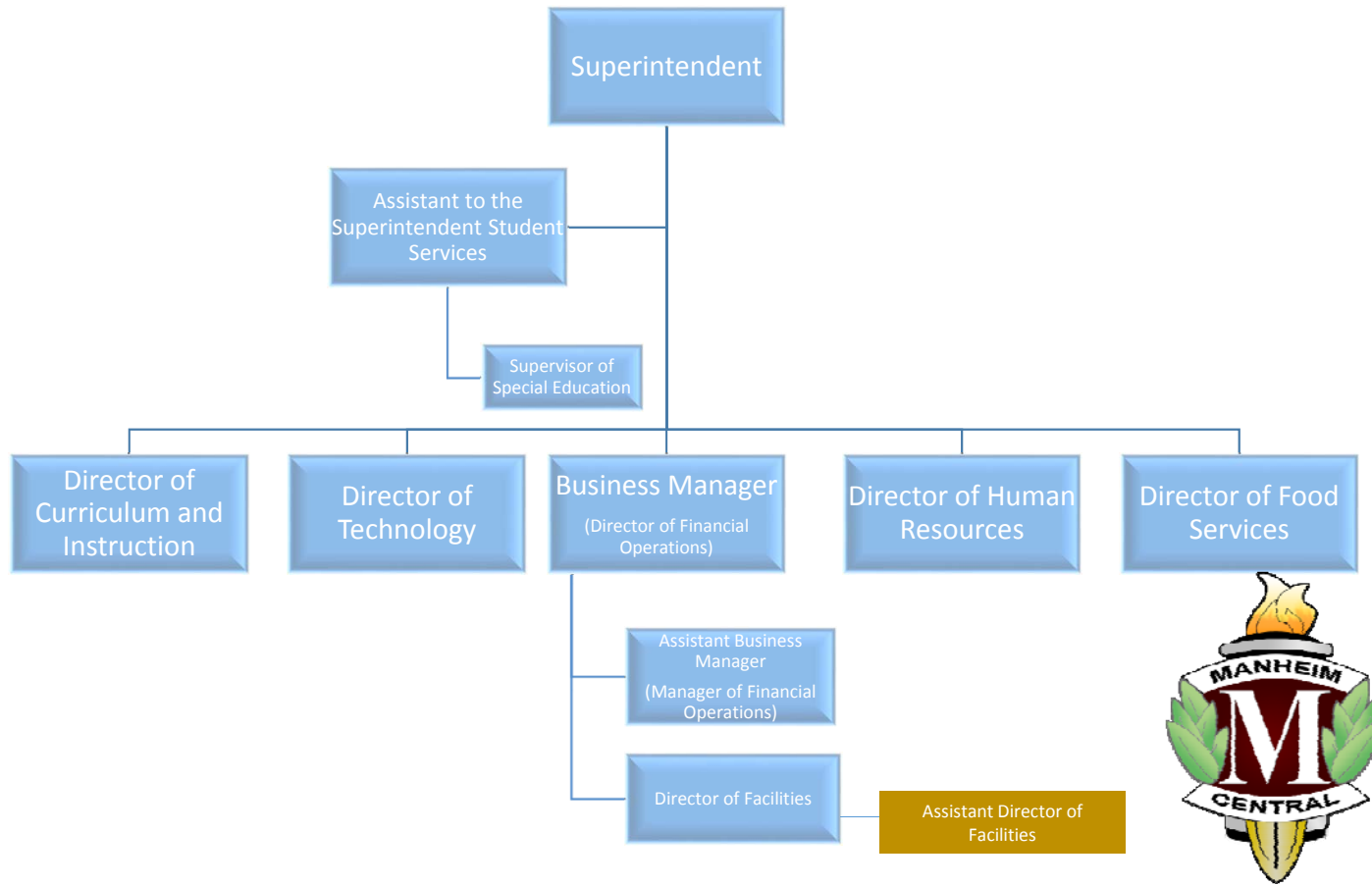
Ext :

Contact Person Telephone Number

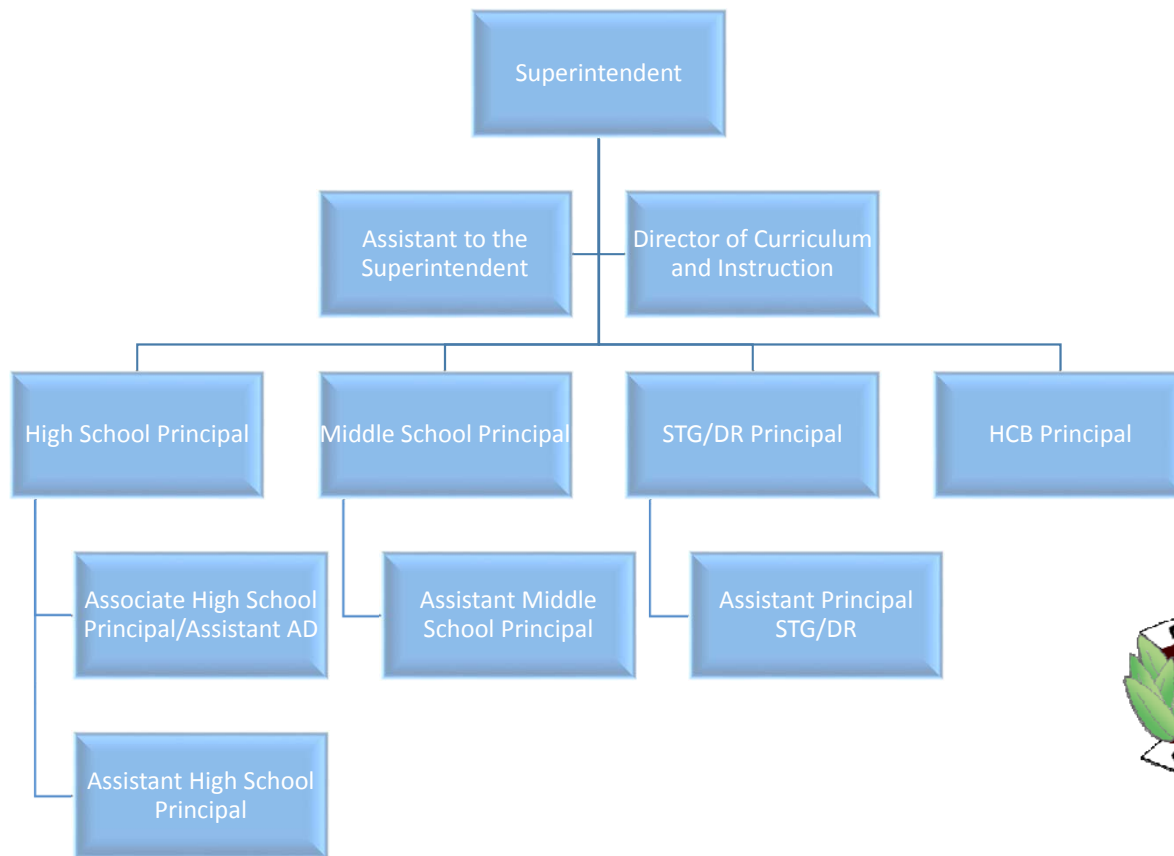
(717)664-8528

Contact Person Fax Number

Manheim Central School District Operations Administration Organizational Chart



Manheim Central School District Building Administration Organizational Chart



Val Number

Description

Justification

13092

REG: A large amount has been reported as local revenue in Fund 32, account 6000 which should only include interest earnings of this fund. Correct or provide a brief explanation of the revenue reported.

All of it is interest earned for Fund 32.

REG, Fund 32, Local Revenue Line 6000: \$35,852.00

Amounts Expressed in Whole Dollars	<u>General Fund</u> <u>(10)</u>	<u>Public Purpose Trust</u> <u>(27)</u>	<u>Other Compt Approved</u> <u>(28)</u>	<u>Athletic / Activity</u> <u>(29)</u>	<u>Capital Reserve (690.</u> <u>1850)</u> <u>(31)</u>
Assets And Deferred Outflows Of Resources					
Assets					
0100 Cash and Cash Equivalents	8,099,428				
0110 Investments	14,200,000				
0120 Taxes Receivable	1,439,741				
0130 Due From Other Funds	104,363				
0141 Due From Other Governments	1,867,005				
0142 State Revenue Receivable					
0143 Federal Revenue Receivable					
0145 Other Intergovernmental Revenue Receivable					
0146 Due from Primary Government					
0147 Due from Component Unit					
0150 Other Receivables	96,921				
0170 Inventories	53,673				
0180 Prepaid Expenses (Expenditures)	104,971				
0190 Other Current Assets					
Total Assets	\$25,966,102				
0910 Deferred Outflows of Resources					
Total Assets And Deferred Outflows Of Resources	\$25,966,102				

Amounts Expressed in Whole Dollars

	<u>Capital Reserve (1431)</u> <u>(32)</u>	<u>Other Capital Projects</u> <u>Fund</u> <u>(39)</u>	<u>Debt Service</u> <u>(40)</u>	<u>Permanent</u> <u>(90)</u>	<u>Total Governmental</u> <u>Funds</u>
Assets And Deferred Outflows Of Resources					
Assets					
0100 Cash and Cash Equivalents	1,153,693	4,316,355			13,569,476
0110 Investments					14,200,000
0120 Taxes Receivable					1,439,741
0130 Due From Other Funds					104,363
0141 Due From Other Governments					1,867,005
0142 State Revenue Receivable					
0143 Federal Revenue Receivable					
0145 Other Intergovernmental Revenue Receivable					
0146 Due from Primary Government					
0147 Due from Component Unit					
0150 Other Receivables					96,921
0170 Inventories					53,673
0180 Prepaid Expenses (Expenditures)					104,971
0190 Other Current Assets					
Total Assets	\$1,153,693	\$4,316,355			\$31,436,150
0910 Deferred Outflows of Resources					
Total Assets And Deferred Outflows Of Resources	\$1,153,693	\$4,316,355			\$31,436,150

Amounts Expressed in Whole Dollars

	<u>General Fund</u> <u>(10)</u>	<u>Public Purpose Trust</u> <u>(27)</u>	<u>Other Compt Approved</u> <u>(28)</u>	<u>Athletic / Activity</u> <u>(29)</u>	<u>Capital Reserve (690.</u> <u>1850)</u> <u>(31)</u>
Liabilities And Deferred Inflows Of Resources And Fund Balances					
Liabilities					
0400 Due to Other Funds	471,597				
0411 Due to Other Governments					
0412 Due to Primary Government					
0413 Due to Component Unit					
0420 Accounts Payable	1,298,063				
0430 Contracts Payable					
0440 Current Portion of Long-Term Debt					
0450 Short-Term Payables					
0461 Accrued Salaries and Benefits	4,968,291				
0462 Payroll Deductions and Withholding					
0480 Unearned Revenues					
0490 Other Current Liabilities	94,006				
Total Liabilities	\$6,831,957				
0950 Deferred Inflows of Resources	400,778				
Fund Balances					
0810 Nonspendable Fund Balance	158,644				
0820 Restricted Fund Balance					
0830 Committed Fund Balance	15,300,000				
0840 Assigned Fund Balance					
0850 Unassigned Fund Balance	3,274,723				
Total Fund Balances	\$18,733,367				
Total Liabilities, Deferred Inflows Of Resources And Fund Balances	\$25,966,102				

Amounts Expressed in Whole Dollars	<u>Capital Reserve (1431)</u> <u>(32)</u>	<u>Other Capital Projects</u> <u>Fund</u> <u>(39)</u>	<u>Debt Service</u> <u>(40)</u>	<u>Permanent</u> <u>(90)</u>	<u>Total Governmental</u> <u>Funds</u>
Liabilities And Deferred Inflows Of Resources And Fund Balances					
Liabilities					
0400 Due to Other Funds		1,349			472,946
0411 Due to Other Governments					
0412 Due to Primary Government					
0413 Due to Component Unit					
0420 Accounts Payable	1,612	933,285			2,232,960
0430 Contracts Payable					
0440 Current Portion of Long-Term Debt					
0450 Short-Term Payables					
0461 Accrued Salaries and Benefits					4,968,291
0462 Payroll Deductions and Withholding					
0480 Unearned Revenues					
0490 Other Current Liabilities					94,006
Total Liabilities	\$1,612	\$934,634			\$7,768,203
0950 Deferred Inflows of Resources					400,778
Fund Balances					
0810 Nonspendable Fund Balance					158,644
0820 Restricted Fund Balance	1,152,081	3,381,721			4,533,802
0830 Committed Fund Balance					15,300,000
0840 Assigned Fund Balance					
0850 Unassigned Fund Balance					3,274,723
Total Fund Balances	\$1,152,081	\$3,381,721			\$23,267,169
Total Liabilities, Deferred Inflows Of Resources And Fund Balances	\$1,153,693	\$4,316,355			\$31,436,150

Amounts Expressed in Whole Dollars	<u>General Fund</u> <u>(10)</u>	<u>Public Purpose Trust</u> <u>(27)</u>	<u>Other Compt Approved</u> <u>(28)</u>	<u>Athletic / Activity</u> <u>(29)</u>	<u>Capital Reserve (690.</u> <u>1850)</u> <u>(31)</u>
Revenues					
6000 Revenue from Local Sources	38,608,533				
7000 Revenue from State Sources	16,008,461				
8000 Revenue from Federal Sources	820,209				
Total Revenues	\$55,437,203				
Expenditures					
1000 Instruction	30,388,364				
2000 Support Services	16,635,846				
3000 Operation of Non-Instructional Services	1,222,305				
4000 Facilities Acquisition, Construction and Improvement Services	1,930,663				
5110 Debt Service	6,171,924				
5130 Refund of Prior Year Revenues / Receipts					
Total Expenditures	\$56,349,102				
Excess (Deficiency) Of Revenues Over Expenditures	(\$911,899)				
Other Financing Sources (Uses)					
9110 Face Value of Bonds Issued					
9120 Proceeds from Refunding of Bonds					
9130 Bond Premiums					
9200 Proceeds from Extended-Term Financing					
9300 Interfund Transfers - IN					
9400 Sale of or Compensation for Loss of Fixed Assets					
9710 Transfers from Component Units					
9720 Transfers from Primary Governments					
9910 Other Financing Sources Not Listed in the 9000 Series					
9990 Insurance Recoveries					
5120 Debt Service – Refunded Bonds					
5150 Bond Discounts					
5200 Interfund Transfers – Out	98,422				
5300 Transfers Out to Component Units/Primary Governments					
Total Other Financing Sources (Uses)	(\$98,422)				

Amounts Expressed in Whole Dollars	<u>Capital Reserve (1431)</u> <u>(32)</u>	<u>Other Capital Projects</u> <u>Fund</u> <u>(39)</u>	<u>Debt Service</u> <u>(40)</u>	<u>Permanent</u> <u>(90)</u>	<u>Total Governmental</u> <u>Funds</u>
Revenues					
6000 Revenue from Local Sources	35,852	189,322			38,833,707
7000 Revenue from State Sources		1,531,745			17,540,206
8000 Revenue from Federal Sources					820,209
Total Revenues	\$35,852	\$1,721,067			\$57,194,122
Expenditures					
1000 Instruction					30,388,364
2000 Support Services	651,713	335,584			17,623,143
3000 Operation of Non-Instructional Services					1,222,305
4000 Facilities Acquisition, Construction and Improvement Services		10,023,164			11,953,827
5110 Debt Service					6,171,924
5130 Refund of Prior Year Revenues / Receipts					
Total Expenditures	\$651,713	\$10,358,748			\$67,359,563
Excess (Deficiency) Of Revenues Over Expenditures	(\$615,861)	(\$8,637,681)			(\$10,165,441)
Other Financing Sources (Uses)					
9110 Face Value of Bonds Issued					
9120 Proceeds from Refunding of Bonds					
9130 Bond Premiums					
9200 Proceeds from Extended-Term Financing		334,235			334,235
9300 Interfund Transfers - IN					
9400 Sale of or Compensation for Loss of Fixed Assets					
9710 Transfers from Component Units					
9720 Transfers from Primary Governments					
9910 Other Financing Sources Not Listed in the 9000 Series					
9990 Insurance Recoveries					
5120 Debt Service – Refunded Bonds					
5150 Bond Discounts					
5200 Interfund Transfers – Out					98,422
5300 Transfers Out to Component Units/Primary Governments					
Total Other Financing Sources (Uses)		\$334,235			\$235,813

Amounts Expressed in Whole Dollars	<u>General Fund</u> <u>(10)</u>	<u>Public Purpose Trust</u> <u>(27)</u>	<u>Other Compt Approved</u> <u>(28)</u>	<u>Athletic / Activity</u> <u>(29)</u>	<u>Capital Reserve</u> <u>(690.</u> <u>1850)</u> <u>(31)</u>
Special And Extraordinary Items					
9920 Special Items – Gains					
9930 Extraordinary Items – Gains					
5520 Special Items – Losses					
5530 Extraordinary Items – Losses					
Net Change In Fund Balances	(\$1,010,321)				
Fund Balance					
0001 Fund Balance - Beginning of Fiscal Year	19,743,689				
Fund Balance - End Of Year	\$18,733,368				

Amounts Expressed in Whole Dollars	<u>Capital Reserve (1431)</u> <u>(32)</u>	<u>Other Capital Projects</u> <u>Fund</u> <u>(39)</u>	<u>Debt Service</u> <u>(40)</u>	<u>Permanent</u> <u>(90)</u>	<u>Total Governmental</u> <u>Funds</u>
Special And Extraordinary Items					
9920 Special Items – Gains					
9930 Extraordinary Items – Gains					
5520 Special Items – Losses					
5530 Extraordinary Items – Losses					
Net Change In Fund Balances	(\$615,861)	(\$8,303,446)			(\$9,929,628)
Fund Balance					
0001 Fund Balance - Beginning of Fiscal Year	1,767,941	11,685,168			33,196,798
Fund Balance - End Of Year	\$1,152,080	\$3,381,722			\$23,267,170

Amounts Expressed in Whole Dollars	<u>Food Service</u> <u>(51)</u>	<u>Child Care</u> <u>Operations</u> <u>(52)</u>	<u>Other Enterprise</u> <u>(58)</u>	<u>TOTAL</u>	<u>Internal Service</u> <u>(60)</u>
Assets And Deferred Outflows Of Resources					
Current Assets					
0100 Cash and Cash Equivalents	55,075			55,075	765,303
0110 Investments					700,000
0130 Due From Other Funds	84,341			84,341	387,256
0141 Due From Other Governments	12,257			12,257	
0142 State Revenue Receivable					
0143 Federal Revenue Receivable					
0146 Due from Primary Government					
0147 Due from Component Unit					
0150 Other Receivables	6,532			6,532	
0170 Inventories	98,875			98,875	
0180 Prepaid Expenses (Expenditures)					
0190 Other Current Assets					
Total Current Assets	\$257,080			\$257,080	\$1,852,559
Noncurrent Assets					
0211 Land					
0212 Site Improvements (Net)					
0220 Buildings and Building Improvements (Net)					
0230 Machinery, Equipment and Furniture (Net)	112,670			112,670	
0250 Construction in Progress					
0260 Long Term Prepayments					
0290 Other Noncurrent Assets					
Total Noncurrent Assets	\$112,670			\$112,670	
0910 Deferred Outflows of Resources	337,020			337,020	
Total Assets And Deferred Outflows Of Resources	\$706,770			\$706,770	\$1,852,559

Amounts Expressed in Whole Dollars	<u>Food Service</u> <u>(51)</u>	<u>Child Care</u> <u>Operations</u> <u>(52)</u>	<u>Other Enterprise</u> <u>(58)</u>	<u>TOTAL</u>	<u>Internal Service</u> <u>(60)</u>
Liabilities And Deferred Inflows Of Resources And Net Position					
Current Liabilities					
0400 Due to Other Funds	103,014			103,014	
0411 Due to Other Governments					
0413 Due to Component Unit					
0420 Accounts Payable	5,164			5,164	
0430 Contracts Payable					
0440 Current Portion of Long-Term Debt					
0450 Short-Term Payables					
0461 Accrued Salaries and Benefits	1,573			1,573	387,256
0462 Payroll Deductions and Withholding					
0480 Unearned Revenues	35,923			35,923	
0490 Other Current Liabilities					
Total Current Liabilities	\$145,674			\$145,674	\$387,256
Noncurrent Liabilities					
0510 Bonds Payable					
0520 Extended-Term Financing Agreements Payable					
0530 Lease-Purchase Obligations					
0540 Accumulated Compensated Absences					
0550 Authority Lease Obligations					
0560 Other Post-Employment Benefits (OPEB)	89,473			89,473	
0570 Net Pension Liability	2,060,073			2,060,073	
0599 Other Noncurrent Liabilities					
Total Noncurrent Liabilities	\$2,149,546			\$2,149,546	
Total Liabilities	\$2,295,220			\$2,295,220	\$387,256
0950 Deferred Inflows of Resources	77,380			77,380	
Net Position					
0791 Net Investment in Capital Assets	112,670			112,670	
0008 Restricted Net Position (0792 – 0798)					
0799 Unrestricted Net Position	(1,778,500)			(1,778,500)	1,465,303
Total Net Position	(\$1,665,830)			(\$1,665,830)	\$1,465,303
Total Liabilities And Deferred Inflows Of Resources And Net Position	\$706,770			\$706,770	\$1,852,559

Amounts Expressed in Whole Dollars	<u>Food Service</u> <u>(51)</u>	<u>Child Care Operations</u> <u>(52)</u>	<u>Other Enterprise</u> <u>(58)</u>	<u>TOTAL</u>	<u>Internal Service</u> <u>(60)</u>
Operating Revenues					
6600 Food Service Revenue	918,438			918,438	
0071 Charges for Services					4,181,983
0072 Other Operating Revenue					
Total Operating Revenues	\$918,438			\$918,438	\$4,181,983
Operating Expenses					
100 Personnel Services – Salaries	610,308			610,308	
200 Personnel Services – Employee Benefits	485,662			485,662	4,181,983
300 Purchased Professional and Technical Services	410			410	
400 Purchased Property Services	36,616			36,616	
500 Other Purchased Services	3,514			3,514	
600 Supplies	804,463			804,463	
740 Depreciation	21,777			21,777	
810 Dues and Fees	350			350	
890 Miscellaneous Expenditures					
Total Operating Expenses	\$1,963,100			\$1,963,100	\$4,181,983
Operating Income (Loss)	(\$1,044,662)			(\$1,044,662)	\$0
Non Operating Revenues (Expenses)					
6500 Earnings on Investments	2,515			2,515	30,415
6920 Contributions and Donations from Private Sources					
6930 Gains or Losses on Sale of Fixed Assets					
6991 Refunds of a Prior Year Expenditure					
7000 Revenue from State Sources	161,378			161,378	
8000 Revenue from Federal Sources	583,612			583,612	
9990 Insurance Recoveries					
820 Claims and Judgments Against the LEA					
830 Interest					
TOTAL Non Operating Revenues (Expenses)	\$747,505			\$747,505	\$30,415
Income (Loss) Before Contributions And Transfers	(\$297,157)			(\$297,157)	\$30,415

Amounts Expressed in Whole Dollars	<u>Food Service</u> <u>(51)</u>	<u>Child Care Operations</u> <u>(52)</u>	<u>Other Enterprise</u> <u>(58)</u>	<u>TOTAL</u>	<u>Internal Service</u> <u>(60)</u>
Contributions, Transfers, and Special and Extraordinary Items					
5200 Interfund Transfers – Out					
5300 Transfers Out to Component Units/Primary Governments					
5520 Special Items – Losses					
5530 Extraordinary Items – Losses					
9300 Interfund Transfers - IN	98,422			98,422	
9500 Capital Contributions	69,963			69,963	
9700 Transfers IN From Component Units/Primary Governments					
9920 Special Items – Gains					
9930 Extraordinary Items – Gains					
Change In Net Position	(\$128,772)			(\$128,772)	\$30,415
0002 Net Position - Beginning of Fiscal Year	(1,537,058)			(1,537,058)	1,434,888
0003 Accounting Changes / Residual Equity Transfers					
Net Position - End Of Year	(\$1,665,830)			(\$1,665,830)	\$1,465,303

Amounts Expressed in Whole Dollars	<u>Food Service</u> <u>(51)</u>	<u>Child Care Operations</u> <u>(52)</u>	<u>Other Enterprise</u> <u>(58)</u>	<u>TOTAL</u>	<u>Internal Service(60)</u>
Cash Flows From Operating Activities					
0011 Cash Receipts From Users	915,410			915,410	
0012 Cash Receipts From Assessments Made to Other Funds					
0013 Cash Receipts From Earnings on Investments					
0014 Cash Receipts From Other Operating Revenue					
0015 Cash Payments To Employees For Services	974,186			974,186	
0016 Cash Payments For Insurance Claims					
0017 Cash Payments To Suppliers For Goods and Services	750,158			750,158	
0018 Cash Payments For Other Operating Expenses	350			350	
Net Cash Provided By (Used For) Operating Activities	(\$809,284)			(\$809,284)	
Cash Flows From Non-Capital Financing Activities					
0021 Receipts From Local Sources - 6000					
0022 Receipts From State Sources - 7000	162,017			162,017	
0023 Receipts From Federal Sources -8000	483,676			483,676	
0024 Notes and Loans Received (Repaid)					
0025 Interest Paid on Notes/Loans - 5100-830					
0026 Operating Transfers In (Out)/Residual Equity Trans					
0027 Operating Transfers In (Out) Primary Government / Comp Unit	98,422			98,422	
0028 Receipts From Refund of Prior Year Expenditures - 6991					
0029 Special and Extraordinary Gains (losses)					
0030 Receipts from Insurance Recoveries -9990					
Net Cash Prov By (Used for) Non-Capital Financing Activities	\$744,115			\$744,115	
Cash Flows From Capital and Related Financing Activities					
0031 Payments For Fac Acq, Const, and Imp - 4000					
0032 Gain / (Loss) on Sale of Fixed Assets - 6930					
0033 Proceeds From Extended Term Financing - 9200					
0034 Principal Paid on Financing Agreements					
0035 Interest Paid on Financing Agreements - 5100-830					
0036 (Inc) Dec in Contributed Capital					
Net Cash Prov By (Used for) Capital and Related Financing Activities					
Cash Flows From Investing Activities					
0041 Earnings on Investments - 6500	2,515			2,515	
0042 Purchase of Inv Securities / Deposits to Inv Pools					
0043 Receipts From Investment Pool Withdrawals					
0044 Proceeds from Sale and Maturity of Inv Securities					

LEA : 113364403 Manheim Central SD

Printed 1/2/2020 2:17:47 PM

0045 Loans Received (Paid)

Net Cash Prov By (Used for) Investing Activities	\$2,515	\$2,515
---	----------------	----------------

	<u>Food Service</u> <u>(51)</u>	<u>Child Care Operations</u> <u>(52)</u>	<u>Other Enterprise</u> <u>(58)</u>	<u>TOTAL</u>	<u>Internal Service</u> <u>(60)</u>
Net Increase (Decrease) in Cash Flows	(62,654)			(62,654)	
0004 Cash and Cash Equivalents Beginning of Year	117,729			117,729	
Cash and Cash Equivalents at Year End	\$55,075			\$55,075	
<hr/>					
Reconciliation of Operating Income (Loss) To Net Cash Provided by (Used For) Operating Activities					
0005 Operating Income (Loss) per REP	(1,044,662)			(1,044,662)	
Adjustments					
0051 Depreciation and Net Amortization	21,777			21,777	
0052 Provision for Uncollectible Accounts					
0053 Other Adjustments	108,660			108,660	
Effect of Changes in Assets, Liabilities, Deferred Outflows and Deferred Inflows					
0054 (Inc) Dec In Accounts Receivable (0120-0150)	(5,798)			(5,798)	
0055 Advances to Other Funds (0160)	(49,143)			(49,143)	
0056 (Inc) Dec in Inventories (0170)	18,205			18,205	
0057 (Inc) Dec in Prepaid Expenses (0180)					
0058 (Inc) Dec in Other Current or Noncurrent Assets					
0064 Deferred Outflows (0910)	57,156			57,156	
0059 Inc (Dec) in Accounts Payable (0400-0450)	(19,376)			(19,376)	
0060 Inc (Dec) in Accrued Salaries/Benefits (0461)	1,573			1,573	
0065 Inc (Dec) in Net Pension Liabilities (0570)	85,387			85,387	
0066 Inc (Dec) in Other Postemp Benefit Oblig (0560)	8,012			8,012	
0061 Inc (Dec) in Payroll Deductions/Withholding (0462)					
0062 Inc (Dec) in Unearned Revenue (0480)	(9,874)			(9,874)	
0063 Inc (Dec) in Other Current or Noncurrent Liabilities					
0067 Deferred Inflows (0950)	18,799			18,799	
Total Adjustments	\$235,378			\$235,378	
Cash Provided By (Used for) Total	(\$809,284)			(\$809,284)	

COMBINED STATEMENT OF CASH FLOWS
SCHEDULE OF NONCASH INVESTING, CAPITAL, AND FINANCING ACTIVITIES

Explanation of Transaction and Balance Sheet Effect	Amount
Acquisition of Capital Assets	69,963
USDA Donated Commodities	108,660
Total	\$178,623

LEA : 113364403 Manheim Central SD

Printed 1/2/2020 2:17:49 PM

Amounts Expressed in Whole Dollars

	<u>Private Purpose Trust</u> (71)	<u>Investment Trust</u> (72)	<u>Pension Trust</u> (73)	<u>Activity</u> (81)
Assets And Deferred Outflows Of Resources				
Assets				
0100 Cash and Cash Equivalents	1,023,005			177,331
0110 Investments				
0130 Due From Other Funds				
0147 Due from Component Unit				
0150 Other Receivables				
0170 Inventories				
0180 Prepaid Expenses (Expenditures)				
0190 Other Current Assets				
0220 Buildings and Building Improvements (Net)				
0230 Machinery, Equipment and Furniture (Net)				
Total Assets	\$1,023,005			\$177,331
0910 Deferred Outflows of Resources				
Total Assets And Deferred Outflows Of Resources	\$1,023,005			\$177,331

LEA : 113364403 Manheim Central SD

Printed 1/2/2020 2:17:49 PM

Amounts Expressed in Whole Dollars

	<u>Other Agency</u> <u>(89)</u>	<u>Discrete Component Units</u> <u>(98)</u>	<u>Discrete Component Units</u> <u>(99)</u>	<u>Total Fiduciary Funds</u>
Assets And Deferred Outflows Of Resources				
Assets				
0100 Cash and Cash Equivalents				1,200,336
0110 Investments				
0130 Due From Other Funds				
0147 Due from Component Unit				
0150 Other Receivables				
0170 Inventories				
0180 Prepaid Expenses (Expenditures)				
0190 Other Current Assets				
0220 Buildings and Building Improvements (Net)				
0230 Machinery, Equipment and Furniture (Net)				
Total Assets				\$1,200,336
0910 Deferred Outflows of Resources				
Total Assets And Deferred Outflows Of Resources				\$1,200,336

LEA : 113364403 Manheim Central SD

Printed 1/2/2020 2:17:49 PM

Amounts Expressed in Whole Dollars	<u>Private Purpose Trust</u> (71)	<u>Investment Trust</u> (72)	<u>Pension Trust</u> (73)	<u>Activity</u> (81)
Liabilities, Deferred Inflows Of Resources And Net Position				
Liabilities				
0400 Due to Other Funds				
0411 Due to Other Governments				
0412 Due to Primary Government				
0413 Due to Component Unit				
0420 Accounts Payable				20,026
0430 Contracts Payable				
0450 Short-Term Payables				
0461 Accrued Salaries and Benefits				
0462 Payroll Deductions and Withholding				
0480 Unearned Revenues				
0490 Other Current Liabilities				157,305
Total Liabilities				\$177,331
0950 Deferred Inflows of Resources				
Net Position				
0791 Net Investment in Capital Assets				
0009 Restricted Net Position (0792 – 0798)	1,023,005			
0799 Unrestricted Net Position				
Total Net Position	\$1,023,005			
Total Liabilities, Deferred Inflows Of Resources And Net Position	\$1,023,005			\$177,331

LEA : 113364403 Manheim Central SD

Printed 1/2/2020 2:17:49 PM

Amounts Expressed in Whole Dollars	<u>Other Agency</u> (89)	<u>Discrete Component Units</u> (98)	<u>Discrete Component Units</u> (99)	<u>Total Fiduciary Funds</u>
Liabilities, Deferred Inflows Of Resources And Net Position				
Liabilities				
0400 Due to Other Funds				
0411 Due to Other Governments				
0412 Due to Primary Government				
0413 Due to Component Unit				
0420 Accounts Payable				20,026
0430 Contracts Payable				
0450 Short-Term Payables				
0461 Accrued Salaries and Benefits				
0462 Payroll Deductions and Withholding				
0480 Unearned Revenues				
0490 Other Current Liabilities				157,305
Total Liabilities				\$177,331
0950 Deferred Inflows of Resources				
Net Position				
0791 Net Investment in Capital Assets				
0009 Restricted Net Position (0792 – 0798)				1,023,005
0799 Unrestricted Net Position				
Total Net Position				\$1,023,005
Total Liabilities, Deferred Inflows Of Resources And Net Position				\$1,200,336

Amounts Expressed in Whole Dollars	<u>Private Purpose Trust</u> <u>(71)</u>	<u>Investment Trust</u> <u>(72)</u>	<u>Pension Trust</u> <u>(73)</u>	<u>Discrete Component</u> <u>Units</u> <u>(98)</u>	<u>Discrete Component</u> <u>Units</u> <u>(99)</u>	<u>Total Fiduciary</u> <u>Funds</u>
Additions						
0091 Gifts and Contributions	3,040					3,040
0092 Other Additions	20,938					20,938
Deductions						
0093 Scholarships Awarded	34,483					34,483
0094 Other Deductions						
Change In Net Position	(\$10,505)					(\$10,505)
0006 Net Position – Beginning of Fiscal Year	1,033,510					1,033,510
0007 Net Position Held in Trust for Pension Benefits						
Net Position - End of Fiscal Year	\$1,023,005					\$1,023,005

	<u>Revenue Reported In Current Year</u>	<u>Current Year Tax Accrual</u>	<u>Prior Year Tax Accrual</u>	<u>Taxes Collected In Current Year</u>
<u>Revenue from Local Sources</u>				
6111 Current Real Estate Taxes	31,574,694.25			31,574,694.25
6112 Interim Real Estate Taxes	203,922.24	14,951.19	61,779.71	250,750.76
6113 Public Utility Realty Taxes	35,314.92			35,314.92
6114 Payments in Lieu of Current Taxes - State / Local	2,985.20			2,985.20
6151 Current Act 511 Earned Income Taxes	3,620,089.02	691,139.32	661,743.29	3,590,692.99
6153 Current Act 511 Real Estate Transfer Taxes	653,765.90	130,226.64	118,381.75	641,921.01
6411 Delinquent Real Estate Taxes	578,945.50	202,645.45	222,920.73	599,220.78
6500 Earnings on Investments	773,276.77			
6700 Revenues from LEA Activities	96,290.80			
6832 Federal IDEA Revenue Received as Pass Through	506,656.86			
6839 Federal Revenue Received from Other Sources	111,836.26			
6910 Rentals	18,260.20			
6944 Receipts from Other LEAs in Pennsylvania - Education	21,279.25			
6999 Other Revenues Not Specified Above	411,215.84			
TOTAL Revenue from Local Sources	\$38,608,533.01	\$1,038,962.60	\$1,064,825.48	\$36,695,579.91

**Revenue Reported
In Current Year**

Revenue from State Sources

7110 Basic Education Funding	7,020,120.20		
7160 Tuition for Orphans Subsidy	19,968.48		
7220 Vocational Education	43,499.08		
7250 Migratory Children	40.00		
7271 Special Education funds for School-Aged Pupils	1,606,096.17		
7311 Pupil Transportation Subsidy	1,046,728.96		
7312 Nonpublic and Charter School Pupil Transportation Subsidy	92,400.00		
7320 Rental and Sinking Fund Payments / Building Reimbursement Subsidy	724,905.98		
7330 Health Services (Medical, Dental, Nurse, Act 25)	64,476.76		
7340 State Property Tax Reduction Allocation	830,322.24		
7361 School Safety and Security Grants	25,000.00		
7505 Ready to Learn Block Grant	301,665.00		
7810 State Share of Social Security and Medicare Taxes	758,099.92		
7820 State Share of Retirement Contributions	3,475,137.92		
TOTAL Revenue from State Sources	\$16,008,460.71		

**Revenue Reported
In Current Year**

Revenue from Federal Sources

8514 NCLB, Title I - Improving the Academic Achievement of the Disadvantaged	472,453.00			
8515 NCLB, Title II - Preparing, Training and Recruiting High Quality Teachers and Principals	102,036.00			
8516 NCLB, Title III - Language Instruction for Limited English Proficient and Immigrant Students	2,273.46			
8517 NCLB, Title IV - 21St Century Schools	32,733.00			
8810 School-Based Access Medicaid Reimbursement Program (SBAP) Reimbursements (Access)	205,696.13			
8820 Medical Assistance Reimbursement for Administrative Claiming (Quarterly) Program	5,017.89			
TOTAL Revenue from Federal Sources	\$820,209.48			
TOTAL FROM ALL SOURCES	\$55,437,203.20	\$1,038,962.60	\$1,064,825.48	\$36,695,579.91

Revenue from Local Sources	38,608,533.01
Revenue from State Sources	16,008,460.71
Revenue from Federal Sources	820,209.48
Other Financing Sources	
TOTAL FROM ALL SOURCES	\$55,437,203.20

General Fund (10)

	<u>Total</u>
1000 Instruction	
100 Personnel Services – Salaries	
100 Personnel Services – Salaries	14,863,081.10
Total Personnel Services – Salaries	\$14,863,081.10
200 Personnel Services – Employee Benefits	
210 Group Insurance – Contracted Provider	1,300.80
220 Social Security Contributions	1,097,138.45
230 PSERS Retirement Contributions	4,971,570.49
250 Unemployment Compensation	6,809.27
260 Workers’ Compensation	(107.00)
270 Group Insurance – Self-Insurance	2,777,887.11
299 All Other Employee Benefits	101,740.00
Total Personnel Services – Employee Benefits	\$8,956,339.12
300 Purchased Professional and Technical Services	
322 Professional Educational Services – Ius	2,884,317.59
323 Professional Educational Services – Other Educational Agencies	7,028.34
329 Professional Educational Services – Other	544,768.40
350 Security / Safety Services	208.51
360 Employee Training and Development Services	9,033.00
390 Other Purchased Professional and Technical Services	127,448.47
Total Purchased Professional and Technical Services	\$3,572,804.31
400 Purchased Property Services	
430 Repairs and Maintenance Services	6,354.83
440 Rentals	1,034.99
Total Purchased Property Services	\$7,389.82
500 Other Purchased Services	
510 Student Transportation Services	41,087.90
530 Communications	1,253.52
550 Printing and Binding	6,620.63
561 Tuition To Other School Districts Within the State	74,883.45
562 Tuition To Pennsylvania Charter Schools	650,217.47
563 Tuition To Nonpublic Schools	151,461.00
564 Tuition To Career and Technology Centers	866,637.76
568 Tuition To Private Residential Rehabilitative Institutions (PRRI) [In-State] and Detention Centers	181,794.62
580 Travel	6,292.79
594 IU Payment By Withholding for Institutionalized Children’s Programs – Special Classes	154,202.37
597 Direct Payments To Intermediate Units for Institutionalized Childrens' Program	7,569.00
Total Other Purchased Services	\$2,142,020.51
600 Supplies	
610 General Supplies	386,297.11
640 Books and Periodicals	448,982.18
650 Supplies & Fees – Technology Related	620.60
Total Supplies	\$835,899.89

General Fund (10)		
1000 Instruction		<u>Total</u>
800 Other Objects		
810 Dues and Fees		10,829.15
Total Other Objects		\$10,829.15
Total 1000 Instruction		\$30,388,363.90

General Fund (10)

1100 Regular Programs – Elementary / Secondary

	<u>Elementary</u>	<u>Secondary</u>	<u>Federal</u>	<u>Total</u>
100 Personnel Services – Salaries				
100 Personnel Services – Salaries	5,909,133.77	5,700,805.22	511,256.81	12,121,195.80
Total Personnel Services – Salaries	\$5,909,133.77	\$5,700,805.22	\$511,256.81	\$12,121,195.80
200 Personnel Services – Employee Benefits				
210 Group Insurance – Contracted Provider	780.48	520.32		1,300.80
220 Social Security Contributions	458,325.98	423,791.03	10,948.56	893,065.57
230 PSERS Retirement Contributions	2,097,806.69	1,930,829.26	16,538.29	4,045,174.24
250 Unemployment Compensation	3,404.63	3,404.64		6,809.27
260 Workers' Compensation	(53.50)	(53.50)		(107.00)
270 Group Insurance – Self-Insurance	1,128,207.64	976,120.93	2,244.65	2,106,573.22
299 All Other Employee Benefits	50,870.00	50,870.00		101,740.00
Total Personnel Services – Employee Benefits	\$3,739,341.92	\$3,385,482.68	\$29,731.50	\$7,154,556.10
300 Purchased Professional and Technical Services				
322 Professional Educational Services – Ius	74,221.39	74,221.40		148,442.79
329 Professional Educational Services – Other	320,269.92	218,231.77	3,368.15	541,869.84
390 Other Purchased Professional and Technical Services	22,040.82	21,234.82	1,473.50	44,749.14
Total Purchased Professional and Technical Services	\$416,532.13	\$313,687.99	\$4,841.65	\$735,061.77
400 Purchased Property Services				
430 Repairs and Maintenance Services		6,354.83		6,354.83
440 Rentals		1,034.99		1,034.99
Total Purchased Property Services		\$7,389.82		\$7,389.82
500 Other Purchased Services				
510 Student Transportation Services	8,891.09	24,382.66		33,273.75
530 Communications	601.98	651.54		1,253.52
550 Printing and Binding	3,082.26	3,538.37		6,620.63
561 Tuition To Other School Districts Within the State	10,446.01	10,446.04		20,892.05
562 Tuition To Pennsylvania Charter Schools	281,614.79	281,614.79		563,229.58
568 Tuition To Private Residential Rehabilitative Institutions (PRRI) [In-State] and Detention Centers	6,060.58	6,060.58		12,121.16
580 Travel	1,567.93	3,912.34		5,480.27
Total Other Purchased Services	\$312,264.64	\$330,606.32		\$642,870.96
600 Supplies				
610 General Supplies	112,159.80	197,123.97	28,569.98	337,853.75
640 Books and Periodicals	223,389.19	225,540.00		448,929.19
650 Supplies & Fees – Technology Related	149.50	471.10		620.60
Total Supplies	\$335,698.49	\$423,135.07	\$28,569.98	\$787,403.54
800 Other Objects				
810 Dues and Fees	74.50	3,882.50		3,957.00
Total Other Objects	\$74.50	\$3,882.50		\$3,957.00
Total 1100 Regular Programs – Elementary / Secondary	\$10,713,045.45	\$10,164,989.60	\$574,399.94	\$21,452,434.99

General Fund (10)

1110 Regular Programs

	<u>Elementary</u>	<u>Secondary</u>	<u>Federal</u>	<u>Total</u>
100 Personnel Services – Salaries				
100 Personnel Services – Salaries	5,909,133.77	5,700,805.22		11,609,938.99
Total Personnel Services – Salaries	\$5,909,133.77	\$5,700,805.22		\$11,609,938.99
200 Personnel Services – Employee Benefits				
210 Group Insurance – Contracted Provider	780.48	520.32		1,300.80
220 Social Security Contributions	458,325.98	423,791.03		882,117.01
230 PSERS Retirement Contributions	2,097,806.69	1,930,829.26		4,028,635.95
250 Unemployment Compensation	3,404.63	3,404.64		6,809.27
260 Workers' Compensation	(53.50)	(53.50)		(107.00)
270 Group Insurance – Self-Insurance	1,128,207.64	976,120.93		2,104,328.57
299 All Other Employee Benefits	50,870.00	50,870.00		101,740.00
Total Personnel Services – Employee Benefits	\$3,739,341.92	\$3,385,482.68		\$7,124,824.60
300 Purchased Professional and Technical Services				
322 Professional Educational Services – Ius	74,221.39	74,221.40		148,442.79
329 Professional Educational Services – Other	320,269.92	218,231.77		538,501.69
390 Other Purchased Professional and Technical Services	22,040.82	21,234.82		43,275.64
Total Purchased Professional and Technical Services	\$416,532.13	\$313,687.99		\$730,220.12
400 Purchased Property Services				
430 Repairs and Maintenance Services		6,354.83		6,354.83
440 Rentals		1,034.99		1,034.99
Total Purchased Property Services		\$7,389.82		\$7,389.82
500 Other Purchased Services				
510 Student Transportation Services	8,891.09	24,382.66		33,273.75
530 Communications	601.98	651.54		1,253.52
550 Printing and Binding	3,082.26	3,538.37		6,620.63
561 Tuition To Other School Districts Within the State	10,446.01	10,446.04		20,892.05
562 Tuition To Pennsylvania Charter Schools	281,614.79	281,614.79		563,229.58
568 Tuition To Private Residential Rehabilitative Institutions (PRRI) [In-State] and Detention Centers	6,060.58	6,060.58		12,121.16
580 Travel	1,567.93	3,912.34		5,480.27
Total Other Purchased Services	\$312,264.64	\$330,606.32		\$642,870.96
600 Supplies				
610 General Supplies	112,159.80	197,123.97		309,283.77
640 Books and Periodicals	223,389.19	225,540.00		448,929.19
650 Supplies & Fees – Technology Related	149.50	471.10		620.60
Total Supplies	\$335,698.49	\$423,135.07		\$758,833.56
800 Other Objects				
810 Dues and Fees	74.50	3,882.50		3,957.00
Total Other Objects	\$74.50	\$3,882.50		\$3,957.00
Total 1110 Regular Programs	\$10,713,045.45	\$10,164,989.60		\$20,878,035.05

General Fund (10)

	<u>Elementary</u>	<u>Secondary</u>	<u>Federal</u>	<u>Total</u>
1190 Federally-Funded Regular Programs				
100 Personnel Services – Salaries				
100 Personnel Services – Salaries			511,256.81	511,256.81
Total Personnel Services – Salaries			\$511,256.81	\$511,256.81
200 Personnel Services – Employee Benefits				
220 Social Security Contributions			10,948.56	10,948.56
230 PSERS Retirement Contributions			16,538.29	16,538.29
270 Group Insurance – Self-Insurance			2,244.65	2,244.65
Total Personnel Services – Employee Benefits			\$29,731.50	\$29,731.50
300 Purchased Professional and Technical Services				
329 Professional Educational Services – Other			3,368.15	3,368.15
390 Other Purchased Professional and Technical Services			1,473.50	1,473.50
Total Purchased Professional and Technical Services			\$4,841.65	\$4,841.65
600 Supplies				
610 General Supplies			28,569.98	28,569.98
Total Supplies			\$28,569.98	\$28,569.98
Total 1190 Federally-Funded Regular Programs			\$574,399.94	\$574,399.94

General Fund (10)

1200 Special Programs – Elementary / Secondary	<u>Elementary</u>	<u>Secondary</u>	<u>Federal</u>	<u>Total</u>
100 Personnel Services – Salaries				
100 Personnel Services – Salaries	1,318,016.36	1,116,723.05		2,434,739.41
Total Personnel Services – Salaries	\$1,318,016.36	\$1,116,723.05		\$2,434,739.41
200 Personnel Services – Employee Benefits				
220 Social Security Contributions	99,193.98	81,977.67		181,171.65
230 PSERS Retirement Contributions	450,128.43	373,172.49		823,300.92
270 Group Insurance – Self-Insurance	338,409.94	277,181.17		615,591.11
Total Personnel Services – Employee Benefits	\$887,732.35	\$732,331.33		\$1,620,063.68
300 Purchased Professional and Technical Services				
322 Professional Educational Services – Ius	1,115,503.90	1,115,503.90	504,867.00	2,735,874.80
323 Professional Educational Services – Other Educational Agencies	7,028.34			7,028.34
329 Professional Educational Services – Other	1,455.82	1,442.74		2,898.56
350 Security / Safety Services		208.51		208.51
390 Other Purchased Professional and Technical Services	35,852.16	35,852.21		71,704.37
Total Purchased Professional and Technical Services	\$1,159,840.22	\$1,153,007.36	\$504,867.00	\$2,817,714.58
500 Other Purchased Services				
510 Student Transportation Services	3,709.74	4,104.41		7,814.15
561 Tuition To Other School Districts Within the State	26,995.67	26,995.73		53,991.40
562 Tuition To Pennsylvania Charter Schools	43,493.93	43,493.96		86,987.89
563 Tuition To Nonpublic Schools	75,730.50	75,730.50		151,461.00
568 Tuition To Private Residential Rehabilitative Institutions (PRRI) [In-State] and Detention Centers	43,797.66	43,797.66		87,595.32
580 Travel	157.83	45.08		202.91
594 IU Payment By Withholding for Institutionalized Children's Programs – Special Classes	77,101.18	77,101.19		154,202.37
Total Other Purchased Services	\$270,986.51	\$271,268.53		\$542,255.04
600 Supplies				
610 General Supplies	2,974.31	4,412.87		7,387.18
Total Supplies	\$2,974.31	\$4,412.87		\$7,387.18
800 Other Objects				
810 Dues and Fees	593.52	642.52		1,236.04
Total Other Objects	\$593.52	\$642.52		\$1,236.04
Total 1200 Special Programs – Elementary / Secondary	\$3,640,143.27	\$3,278,385.66	\$504,867.00	\$7,423,395.93

General Fund (10)

1210 Life Skills Support

100 Personnel Services – Salaries

	<u>Elementary</u>	<u>Secondary</u>	<u>Federal</u>	<u>Total</u>
100 Personnel Services – Salaries	52,174.97	102,567.75		154,742.72
Total Personnel Services – Salaries	\$52,174.97	\$102,567.75		\$154,742.72

200 Personnel Services – Employee Benefits

220 Social Security Contributions	3,847.15	7,531.98		11,379.13
230 PSERS Retirement Contributions	17,504.97	34,417.28		51,922.25
270 Group Insurance – Self-Insurance	9,120.98	23,755.99		32,876.97
Total Personnel Services – Employee Benefits	\$30,473.10	\$65,705.25		\$96,178.35
Total 1210 Life Skills Support	\$82,648.07	\$168,273.00		\$250,921.07

General Fund (10)

	<u>Elementary</u>	<u>Secondary</u>	<u>Federal</u>	<u>Total</u>
1220 Sensory Support				
100 Personnel Services – Salaries				
100 Personnel Services – Salaries	255,051.44	32,517.82		287,569.26
Total Personnel Services – Salaries	\$255,051.44	\$32,517.82		\$287,569.26
200 Personnel Services – Employee Benefits				
220 Social Security Contributions	19,097.21	2,456.16		21,553.37
230 PSERS Retirement Contributions	85,392.66	10,774.22		96,166.88
270 Group Insurance – Self-Insurance	35,730.18	8,750.82		44,481.00
Total Personnel Services – Employee Benefits	\$140,220.05	\$21,981.20		\$162,201.25
500 Other Purchased Services				
580 Travel	45.07	45.08		90.15
Total Other Purchased Services	\$45.07	\$45.08		\$90.15
600 Supplies				
610 General Supplies	809.80	809.87		1,619.67
Total Supplies	\$809.80	\$809.87		\$1,619.67
Total 1220 Sensory Support	\$396,126.36	\$55,353.97		\$451,480.33

General Fund (10)

	<u>Elementary</u>	<u>Secondary</u>	<u>Federal</u>	<u>Total</u>
1230 Emotional Support				
100 Personnel Services – Salaries				
100 Personnel Services – Salaries	50,160.65	88,359.79		138,520.44
Total Personnel Services – Salaries	\$50,160.65	\$88,359.79		\$138,520.44
200 Personnel Services – Employee Benefits				
220 Social Security Contributions	3,731.79	6,533.85		10,265.64
230 PSERS Retirement Contributions	16,545.78	29,377.39		45,923.17
270 Group Insurance – Self-Insurance	7,897.09	18,409.78		26,306.87
Total Personnel Services – Employee Benefits	\$28,174.66	\$54,321.02		\$82,495.68
300 Purchased Professional and Technical Services				
323 Professional Educational Services – Other Educational Agencies	7,028.34			7,028.34
Total Purchased Professional and Technical Services	\$7,028.34			\$7,028.34
Total 1230 Emotional Support	\$85,363.65	\$142,680.81		\$228,044.46

General Fund (10)

1240 Academic Support

	<u>Elementary</u>	<u>Secondary</u>	<u>Federal</u>	<u>Total</u>
100 Personnel Services – Salaries				
100 Personnel Services – Salaries	897,710.97	880,667.14		1,778,378.11
Total Personnel Services – Salaries	\$897,710.97	\$880,667.14		\$1,778,378.11
200 Personnel Services – Employee Benefits				
220 Social Security Contributions	67,947.05	64,604.86		132,551.91
230 PSERS Retirement Contributions	309,783.35	294,387.91		604,171.26
270 Group Insurance – Self-Insurance	271,918.32	216,102.23		488,020.55
Total Personnel Services – Employee Benefits	\$649,648.72	\$575,095.00		\$1,224,743.72
300 Purchased Professional and Technical Services				
329 Professional Educational Services – Other	913.08	900.00		1,813.08
350 Security / Safety Services		208.51		208.51
Total Purchased Professional and Technical Services	\$913.08	\$1,108.51		\$2,021.59
500 Other Purchased Services				
510 Student Transportation Services	867.51	1,262.15		2,129.66
580 Travel	112.76			112.76
Total Other Purchased Services	\$980.27	\$1,262.15		\$2,242.42
600 Supplies				
610 General Supplies	2,164.51	3,603.00		5,767.51
Total Supplies	\$2,164.51	\$3,603.00		\$5,767.51
800 Other Objects				
810 Dues and Fees	593.52	642.52		1,236.04
Total Other Objects	\$593.52	\$642.52		\$1,236.04
Total 1240 Academic Support	\$1,552,011.07	\$1,462,378.32		\$3,014,389.39

General Fund (10)

	<u>Elementary</u>	<u>Secondary</u>	<u>Federal</u>	<u>Total</u>
1241 Learning Support – Public				
100 Personnel Services – Salaries				
100 Personnel Services – Salaries	834,708.55	824,812.11		1,659,520.66
Total Personnel Services – Salaries	\$834,708.55	\$824,812.11		\$1,659,520.66
200 Personnel Services – Employee Benefits				
220 Social Security Contributions	63,127.17	60,570.50		123,697.67
230 PSERS Retirement Contributions	289,225.34	275,662.30		564,887.64
270 Group Insurance – Self-Insurance	265,323.65	205,420.19		470,743.84
Total Personnel Services – Employee Benefits	\$617,676.16	\$541,652.99		\$1,159,329.15
300 Purchased Professional and Technical Services				
329 Professional Educational Services – Other	913.08	900.00		1,813.08
350 Security / Safety Services		208.51		208.51
Total Purchased Professional and Technical Services	\$913.08	\$1,108.51		\$2,021.59
500 Other Purchased Services				
580 Travel	112.76			112.76
Total Other Purchased Services	\$112.76			\$112.76
600 Supplies				
610 General Supplies	900.91	2,526.18		3,427.09
Total Supplies	\$900.91	\$2,526.18		\$3,427.09
800 Other Objects				
810 Dues and Fees		49.00		49.00
Total Other Objects		\$49.00		\$49.00
Total 1241 Learning Support – Public	\$1,454,311.46	\$1,370,148.79		\$2,824,460.25

General Fund (10)

	<u>Elementary</u>	<u>Secondary</u>	<u>Federal</u>	<u>Total</u>
1243 Gifted Support				
100 Personnel Services – Salaries				
100 Personnel Services – Salaries	63,002.42	55,855.03		118,857.45
Total Personnel Services – Salaries	\$63,002.42	\$55,855.03		\$118,857.45
200 Personnel Services – Employee Benefits				
220 Social Security Contributions	4,819.88	4,034.36		8,854.24
230 PSERS Retirement Contributions	20,558.01	18,725.61		39,283.62
270 Group Insurance – Self-Insurance	6,594.67	10,682.04		17,276.71
Total Personnel Services – Employee Benefits	\$31,972.56	\$33,442.01		\$65,414.57
500 Other Purchased Services				
510 Student Transportation Services	867.51	1,262.15		2,129.66
Total Other Purchased Services	\$867.51	\$1,262.15		\$2,129.66
600 Supplies				
610 General Supplies	1,263.60	1,076.82		2,340.42
Total Supplies	\$1,263.60	\$1,076.82		\$2,340.42
800 Other Objects				
810 Dues and Fees	593.52	593.52		1,187.04
Total Other Objects	\$593.52	\$593.52		\$1,187.04
Total 1243 Gifted Support	\$97,699.61	\$92,229.53		\$189,929.14

General Fund (10)

1260 Physical Support

300 Purchased Professional and Technical Services

390 Other Purchased Professional and Technical Services

Total Purchased Professional and Technical Services

Total 1260 Physical Support

	<u>Elementary</u>	<u>Secondary</u>	<u>Federal</u>	<u>Total</u>
390 Other Purchased Professional and Technical Services	35,852.16	35,852.21		71,704.37
Total Purchased Professional and Technical Services	\$35,852.16	\$35,852.21		\$71,704.37
Total 1260 Physical Support	\$35,852.16	\$35,852.21		\$71,704.37

General Fund (10)

	<u>Elementary</u>	<u>Secondary</u>	<u>Federal</u>	<u>Total</u>
1290 Special Programs - Other Support				
100 Personnel Services – Salaries				
100 Personnel Services – Salaries	62,918.33	12,610.55		75,528.88
Total Personnel Services – Salaries	\$62,918.33	\$12,610.55		\$75,528.88
200 Personnel Services – Employee Benefits				
220 Social Security Contributions	4,570.78	850.82		5,421.60
230 PSERS Retirement Contributions	20,901.67	4,215.69		25,117.36
270 Group Insurance – Self-Insurance	13,743.37	10,162.35		23,905.72
Total Personnel Services – Employee Benefits	\$39,215.82	\$15,228.86		\$54,444.68
300 Purchased Professional and Technical Services				
322 Professional Educational Services – Ius	1,115,503.90	1,115,503.90	504,867.00	2,735,874.80
329 Professional Educational Services – Other	542.74	542.74		1,085.48
Total Purchased Professional and Technical Services	\$1,116,046.64	\$1,116,046.64	\$504,867.00	\$2,736,960.28
500 Other Purchased Services				
510 Student Transportation Services	2,842.23	2,842.26		5,684.49
561 Tuition To Other School Districts Within the State	26,995.67	26,995.73		53,991.40
562 Tuition To Pennsylvania Charter Schools	43,493.93	43,493.96		86,987.89
563 Tuition To Nonpublic Schools	75,730.50	75,730.50		151,461.00
568 Tuition To Private Residential Rehabilitative Institutions (PRRI) [In-State] and Detention Centers	43,797.66	43,797.66		87,595.32
594 IU Payment By Withholding for Institutionalized Children’s Programs – Special Classes	77,101.18	77,101.19		154,202.37
Total Other Purchased Services	\$269,961.17	\$269,961.30		\$539,922.47
Total 1290 Special Programs - Other Support	\$1,488,141.96	\$1,413,847.35	\$504,867.00	\$3,406,856.31

General Fund (10)

1300 Vocational Education

	<u>Elementary</u>	<u>Secondary</u>	<u>Federal</u>	<u>Total</u>
100 Personnel Services – Salaries				
100 Personnel Services – Salaries		256,227.46		256,227.46
Total Personnel Services – Salaries		\$256,227.46		\$256,227.46
200 Personnel Services – Employee Benefits				
220 Social Security Contributions		19,094.47		19,094.47
230 PSERS Retirement Contributions		86,028.35		86,028.35
270 Group Insurance – Self-Insurance		34,964.12		34,964.12
Total Personnel Services – Employee Benefits		\$140,086.94		\$140,086.94
500 Other Purchased Services				
564 Tuition To Career and Technology Centers		866,637.76		866,637.76
580 Travel		564.41		564.41
Total Other Purchased Services		\$867,202.17		\$867,202.17
600 Supplies				
610 General Supplies		12,585.80		12,585.80
640 Books and Periodicals		52.99		52.99
Total Supplies		\$12,638.79		\$12,638.79
800 Other Objects				
810 Dues and Fees		5,636.11		5,636.11
Total Other Objects		\$5,636.11		\$5,636.11
Total 1300 Vocational Education		\$1,281,791.47		\$1,281,791.47

General Fund (10)

	<u>Elementary</u>	<u>Secondary</u>	<u>Federal</u>	<u>Total</u>
1400 Other Instructional Programs – Elementary / Secondary				
100 Personnel Services – Salaries				
100 Personnel Services – Salaries		2,778.75		2,778.75
Total Personnel Services – Salaries		\$2,778.75		\$2,778.75
200 Personnel Services – Employee Benefits				
220 Social Security Contributions		207.50		207.50
230 PSERS Retirement Contributions		935.65		935.65
270 Group Insurance – Self-Insurance	4,885.85	4,885.85		9,771.70
Total Personnel Services – Employee Benefits	\$4,885.85	\$6,029.00		\$10,914.85
300 Purchased Professional and Technical Services				
390 Other Purchased Professional and Technical Services	4,586.92	6,408.04		10,994.96
Total Purchased Professional and Technical Services	\$4,586.92	\$6,408.04		\$10,994.96
500 Other Purchased Services				
568 Tuition To Private Residential Rehabilitative Institutions (PRRI) [In-State] and Detention Centers	41,039.07	41,039.07		82,078.14
580 Travel	22.60	22.60		45.20
597 Direct Payments To Intermediate Units for Institutionalized Childrens' Program	3,784.50	3,784.50		7,569.00
Total Other Purchased Services	\$44,846.17	\$44,846.17		\$89,692.34
Total 1400 Other Instructional Programs – Elementary / Secondary	\$54,318.94	\$60,061.96		\$114,380.90

General Fund (10)

	<u>Elementary</u>	<u>Secondary</u>	<u>Federal</u>	<u>Total</u>
1430 Homebound Instruction				
100 Personnel Services – Salaries				
100 Personnel Services – Salaries		2,778.75		2,778.75
Total Personnel Services – Salaries		\$2,778.75		\$2,778.75
200 Personnel Services – Employee Benefits				
220 Social Security Contributions		207.50		207.50
230 PSERS Retirement Contributions		935.65		935.65
270 Group Insurance – Self-Insurance	4,885.85	4,885.85		9,771.70
Total Personnel Services – Employee Benefits	\$4,885.85	\$6,029.00		\$10,914.85
300 Purchased Professional and Technical Services				
390 Other Purchased Professional and Technical Services	4,586.92	6,408.04		10,994.96
Total Purchased Professional and Technical Services	\$4,586.92	\$6,408.04		\$10,994.96
500 Other Purchased Services				
580 Travel	22.60	22.60		45.20
Total Other Purchased Services	\$22.60	\$22.60		\$45.20
Total 1430 Homebound Instruction	\$9,495.37	\$15,238.39		\$24,733.76

General Fund (10)

	<u>Elementary</u>	<u>Secondary</u>	<u>Federal</u>	<u>Total</u>
1440 Alternative Regular Education Programs				
500 Other Purchased Services				
568 Tuition To Private Residential Rehabilitative Institutions (PRRI) [In-State] and Detention Centers	41,039.07	41,039.07		82,078.14
597 Direct Payments To Intermediate Units for Institutionalized Childrens' Program	3,784.50	3,784.50		7,569.00
Total Other Purchased Services	\$44,823.57	\$44,823.57		\$89,647.14
Total 1440 Alternative Regular Education Programs	\$44,823.57	\$44,823.57		\$89,647.14

General Fund (10)

1442 Alternative Education Programs

500 Other Purchased Services

	<u>Elementary</u>	<u>Secondary</u>	<u>Federal</u>	<u>Total</u>
568 Tuition To Private Residential Rehabilitative Institutions (PRRI) [In-State] and Detention Centers	41,039.07	41,039.07		82,078.14
597 Direct Payments To Intermediate Units for Institutionalized Childrens' Program	3,784.50	3,784.50		7,569.00
Total Other Purchased Services	\$44,823.57	\$44,823.57		\$89,647.14
Total 1442 Alternative Education Programs	\$44,823.57	\$44,823.57		\$89,647.14

General Fund (10)

1500 Nonpublic School Programs

Elementary

Secondary

Federal

Total

300 Purchased Professional and Technical Services

360 Employee Training and Development Services

9,033.00

9,033.00

Total Purchased Professional and Technical Services

\$9,033.00

\$9,033.00

600 Supplies

610 General Supplies

28,470.38

28,470.38

Total Supplies

\$28,470.38

\$28,470.38

Total 1500 Nonpublic School Programs

\$37,503.38

\$37,503.38

General Fund (10)

1800 Pre-Kindergarten

Elementary

Secondary

Federal

Total

100 Personnel Services – Salaries

100 Personnel Services – Salaries

48,139.68

Total Personnel Services – Salaries

\$48,139.68

200 Personnel Services – Employee Benefits

220 Social Security Contributions

3,599.26

230 PSERS Retirement Contributions

16,131.33

270 Group Insurance – Self-Insurance

10,986.96

Total Personnel Services – Employee Benefits

\$30,717.55

Total 1800 Pre-Kindergarten

\$78,857.23

General Fund (10)

1801 Pre-K Instruction

Elementary

Secondary

Federal

Total

100 Personnel Services – Salaries

100 Personnel Services – Salaries

48,139.68

Total Personnel Services – Salaries

\$48,139.68

200 Personnel Services – Employee Benefits

220 Social Security Contributions

3,599.26

230 PSERS Retirement Contributions

16,131.33

270 Group Insurance – Self-Insurance

10,986.96

Total Personnel Services – Employee Benefits

\$30,717.55

Total 1801 Pre-K Instruction

\$78,857.23

General Fund (10)

2000 Support Services

Total

100 Personnel Services – Salaries

100 Personnel Services – Salaries 5,590,880.27

Total Personnel Services – Salaries \$5,590,880.27

200 Personnel Services – Employee Benefits

220 Social Security Contributions 410,317.16

230 PSERS Retirement Contributions 1,856,677.59

240 Tuition Reimbursement 262,869.62

270 Group Insurance – Self-Insurance 1,402,619.74

Total Personnel Services – Employee Benefits \$3,932,484.11

300 Purchased Professional and Technical Services

310 Official / Administrative Services 68,418.68

322 Professional Educational Services – Ius 67,864.95

329 Professional Educational Services – Other 5,240.64

330 Other Professional Services 153,321.46

340 Technical Services 162,950.25

350 Security / Safety Services 84,699.05

360 Employee Training and Development Services 43,076.19

390 Other Purchased Professional and Technical Services 97,769.23

Total Purchased Professional and Technical Services \$683,340.45

400 Purchased Property Services

410 Cleaning Services 86,413.20

420 Utility Services 164,280.56

430 Repairs and Maintenance Services 189,931.00

440 Rentals 896,638.17

460 Extermination Services 3,855.00

Total Purchased Property Services \$1,341,117.93

500 Other Purchased Services

513 Contracted Carriers 3,024,026.11

516 Student Transportation Services From the IU 600.13

520 Insurance – General 975.00

523 General Property and Liability Insurance 142,434.43

529 Other Insurance 811.25

530 Communications 59,330.33

549 Other Advertising/Public Relations 2,793.03

550 Printing and Binding 90,656.52

580 Travel 20,746.19

595 IU Payments By Withholding 29,219.96

Total Other Purchased Services \$3,371,592.95

600 Supplies

610 General Supplies 533,693.25

620 Energy 732,624.48

640 Books and Periodicals 40,406.36

650 Supplies & Fees – Technology Related 312,786.56

General Fund (10)

2000 Support Services

	<u>Total</u>
Total Supplies	\$1,619,510.65
700 Property	
752 Capital Equipment – Original and Additional	7,396.81
Total Property	\$7,396.81
800 Other Objects	
810 Dues and Fees	89,523.04
Total Other Objects	\$89,523.04
Total 2000 Support Services	\$16,635,846.21

General Fund (10)

	<u>Elementary</u>	<u>Secondary</u>	<u>Federal</u>	<u>Total</u>
2100 Support Services – Students				
100 Personnel Services – Salaries				
100 Personnel Services – Salaries	456,923.01	501,247.07		1,045,273.09
Total Personnel Services – Salaries	\$456,923.01	\$501,247.07		\$1,045,273.09
200 Personnel Services – Employee Benefits				
220 Social Security Contributions	34,182.62	37,423.60		77,954.04
230 PSERS Retirement Contributions	153,446.26	167,131.44		349,770.99
270 Group Insurance – Self-Insurance	69,923.02	68,725.09		147,701.51
Total Personnel Services – Employee Benefits	\$257,551.90	\$273,280.13		\$575,426.54
300 Purchased Professional and Technical Services				
390 Other Purchased Professional and Technical Services	20,210.25	45,210.25		65,420.50
Total Purchased Professional and Technical Services	\$20,210.25	\$45,210.25		\$65,420.50
500 Other Purchased Services				
530 Communications				284.88
580 Travel	632.02	762.85		2,317.70
Total Other Purchased Services	\$632.02	\$762.85		\$2,602.58
600 Supplies				
610 General Supplies	3,421.21	5,667.33	1,000.00	10,088.54
Total Supplies	\$3,421.21	\$5,667.33	\$1,000.00	\$10,088.54
800 Other Objects				
810 Dues and Fees	938.50	1,177.50		2,116.00
Total Other Objects	\$938.50	\$1,177.50		\$2,116.00
Total 2100 Support Services – Students	\$739,676.89	\$827,345.13	\$1,000.00	\$1,700,927.25

General Fund (10)

2110 Supervision of Student Services	<u>Elementary</u>	<u>Secondary</u>	<u>Federal</u>	<u>Total</u>
100 <u>Personnel Services – Salaries</u>				
100 Personnel Services – Salaries	72,464.36	72,464.87		144,929.23
Total Personnel Services – Salaries	\$72,464.36	\$72,464.87		\$144,929.23
200 <u>Personnel Services – Employee Benefits</u>				
220 Social Security Contributions	5,541.12	5,541.33		11,082.45
230 PSERS Retirement Contributions	23,900.71	23,900.78		47,801.49
270 Group Insurance – Self-Insurance	7,121.93	7,122.31		14,244.24
Total Personnel Services – Employee Benefits	\$36,563.76	\$36,564.42		\$73,128.18
500 <u>Other Purchased Services</u>				
580 Travel	564.85	564.87		1,129.72
Total Other Purchased Services	\$564.85	\$564.87		\$1,129.72
600 <u>Supplies</u>				
610 General Supplies	14.89	14.90		29.79
Total Supplies	\$14.89	\$14.90		\$29.79
800 <u>Other Objects</u>				
810 Dues and Fees	804.50	804.50		1,609.00
Total Other Objects	\$804.50	\$804.50		\$1,609.00
Total 2110 Supervision of Student Services	\$110,412.36	\$110,413.56		\$220,825.92

General Fund (10)

	<u>Elementary</u>	<u>Secondary</u>	<u>Federal</u>	<u>Total</u>
2111 Supervision of Student Services – Head of Component				
100 Personnel Services – Salaries				
100 Personnel Services – Salaries	72,464.36	72,464.87		144,929.23
Total Personnel Services – Salaries	\$72,464.36	\$72,464.87		\$144,929.23
200 Personnel Services – Employee Benefits				
220 Social Security Contributions	5,541.12	5,541.33		11,082.45
230 PSERS Retirement Contributions	23,900.71	23,900.78		47,801.49
270 Group Insurance – Self-Insurance	7,121.93	7,122.31		14,244.24
Total Personnel Services – Employee Benefits	\$36,563.76	\$36,564.42		\$73,128.18
500 Other Purchased Services				
580 Travel	564.85	564.87		1,129.72
Total Other Purchased Services	\$564.85	\$564.87		\$1,129.72
600 Supplies				
610 General Supplies	14.89	14.90		29.79
Total Supplies	\$14.89	\$14.90		\$29.79
800 Other Objects				
810 Dues and Fees	804.50	804.50		1,609.00
Total Other Objects	\$804.50	\$804.50		\$1,609.00
Total 2111 Supervision of Student Services – Head of Component	\$110,412.36	\$110,413.56		\$220,825.92

General Fund (10)

	<u>Elementary</u>	<u>Secondary</u>	<u>Federal</u>	<u>Total</u>
2120 Guidance Services				
100 Personnel Services – Salaries				
100 Personnel Services – Salaries	258,459.58	322,708.66		581,168.24
Total Personnel Services – Salaries	\$258,459.58	\$322,708.66		\$581,168.24
200 Personnel Services – Employee Benefits				
220 Social Security Contributions	19,294.80	23,862.55		43,157.35
230 PSERS Retirement Contributions	87,297.51	108,205.13		195,502.64
270 Group Insurance – Self-Insurance	41,332.43	49,017.67		90,350.10
Total Personnel Services – Employee Benefits	\$147,924.74	\$181,085.35		\$329,010.09
300 Purchased Professional and Technical Services				
390 Other Purchased Professional and Technical Services	20,210.25	45,210.25		65,420.50
Total Purchased Professional and Technical Services	\$20,210.25	\$45,210.25		\$65,420.50
500 Other Purchased Services				
580 Travel		130.80		130.80
Total Other Purchased Services		\$130.80		\$130.80
600 Supplies				
610 General Supplies	206.74	2,452.74		2,659.48
Total Supplies	\$206.74	\$2,452.74		\$2,659.48
800 Other Objects				
810 Dues and Fees	134.00	373.00		507.00
Total Other Objects	\$134.00	\$373.00		\$507.00
Total 2120 Guidance Services	\$426,935.31	\$551,960.80		\$978,896.11

General Fund (10)

2140 Psychological Services

100 Personnel Services – Salaries

	<u>Elementary</u>	<u>Secondary</u>	<u>Federal</u>	<u>Total</u>
100 Personnel Services – Salaries	125,999.07	106,073.54		232,072.61
Total Personnel Services – Salaries	\$125,999.07	\$106,073.54		\$232,072.61

200 Personnel Services – Employee Benefits

220 Social Security Contributions	9,346.70	8,019.72		17,366.42
230 PSERS Retirement Contributions	42,248.04	35,025.53		77,273.57
270 Group Insurance – Self-Insurance	21,468.66	12,585.11		34,053.77
Total Personnel Services – Employee Benefits	\$73,063.40	\$55,630.36		\$128,693.76

500 Other Purchased Services

580 Travel	67.17	67.18		134.35
Total Other Purchased Services	\$67.17	\$67.18		\$134.35

600 Supplies

610 General Supplies	3,199.58	3,199.69		6,399.27
Total Supplies	\$3,199.58	\$3,199.69		\$6,399.27

Total 2140 Psychological Services

Total 2140 Psychological Services	\$202,329.22	\$164,970.77		\$367,299.99
--	---------------------	---------------------	--	---------------------

General Fund (10)

	<u>Elementary</u>	<u>Secondary</u>	<u>Federal</u>	<u>Total</u>
2160 Social Work Services				
100 Personnel Services – Salaries				
100 Personnel Services – Salaries				60,337.00
Total Personnel Services – Salaries				\$60,337.00
200 Personnel Services – Employee Benefits				
220 Social Security Contributions				4,439.80
230 PSERS Retirement Contributions				20,230.52
270 Group Insurance – Self-Insurance				1,628.60
Total Personnel Services – Employee Benefits				\$26,298.92
500 Other Purchased Services				
580 Travel				922.83
Total Other Purchased Services				\$922.83
600 Supplies				
610 General Supplies			1,000.00	1,000.00
Total Supplies			\$1,000.00	\$1,000.00
Total 2160 Social Work Services			\$1,000.00	\$88,558.75

General Fund (10)

	<u>Elementary</u>	<u>Secondary</u>	<u>Federal</u>	<u>Total</u>
2170 Student Accounting Services				
100 Personnel Services – Salaries				
100 Personnel Services – Salaries				26,766.01
Total Personnel Services – Salaries				\$26,766.01
200 Personnel Services – Employee Benefits				
220 Social Security Contributions				1,908.02
230 PSERS Retirement Contributions				8,962.77
270 Group Insurance – Self-Insurance				7,424.80
Total Personnel Services – Employee Benefits				\$18,295.59
500 Other Purchased Services				
530 Communications				284.88
Total Other Purchased Services				\$284.88
Total 2170 Student Accounting Services				\$45,346.48

General Fund (10)

	<u>Elementary</u>	<u>Secondary</u>	<u>Federal</u>	<u>Total</u>
2200 Support Services – Instructional Staff				
100 Personnel Services – Salaries				
100 Personnel Services – Salaries	404,361.63	349,483.91		753,845.54
Total Personnel Services – Salaries	\$404,361.63	\$349,483.91		\$753,845.54
200 Personnel Services – Employee Benefits				
220 Social Security Contributions	30,363.58	25,746.27		56,109.85
230 PSERS Retirement Contributions	133,407.68	116,140.07		249,547.75
240 Tuition Reimbursement	86,184.25	130,190.49		216,374.74
270 Group Insurance – Self-Insurance	67,308.26	56,009.71		123,317.97
Total Personnel Services – Employee Benefits	\$317,263.77	\$328,086.54		\$645,350.31
300 Purchased Professional and Technical Services				
322 Professional Educational Services – Ius	33,932.47	33,932.48		67,864.95
360 Employee Training and Development Services	3,575.69	25,747.43		29,323.12
390 Other Purchased Professional and Technical Services		295.00		295.00
Total Purchased Professional and Technical Services	\$37,508.16	\$59,974.91		\$97,483.07
500 Other Purchased Services				
580 Travel	2,469.98	5,067.35		7,537.33
Total Other Purchased Services	\$2,469.98	\$5,067.35		\$7,537.33
600 Supplies				
610 General Supplies	6,814.28	6,556.92		13,371.20
640 Books and Periodicals	13,647.64	26,362.79		40,010.43
Total Supplies	\$20,461.92	\$32,919.71		\$53,381.63
800 Other Objects				
810 Dues and Fees	4,252.48	4,338.09		8,590.57
Total Other Objects	\$4,252.48	\$4,338.09		\$8,590.57
Total 2200 Support Services – Instructional Staff	\$786,317.94	\$779,870.51		\$1,566,188.45

General Fund (10)

	<u>Elementary</u>	<u>Secondary</u>	<u>Federal</u>	<u>Total</u>
2220 Technology Support Services				
100 Personnel Services – Salaries				
100 Personnel Services – Salaries	40,129.87	40,129.95		80,259.82
Total Personnel Services – Salaries	\$40,129.87	\$40,129.95		\$80,259.82
200 Personnel Services – Employee Benefits				
220 Social Security Contributions	2,879.98	2,880.01		5,759.99
230 PSERS Retirement Contributions	13,459.59	13,459.75		26,919.34
270 Group Insurance – Self-Insurance	6,070.46	6,070.58		12,141.04
Total Personnel Services – Employee Benefits	\$22,410.03	\$22,410.34		\$44,820.37
Total 2220 Technology Support Services	\$62,539.90	\$62,540.29		\$125,080.19

General Fund (10)

2240 Computer-Assisted Instruction Support Services

Elementary

Secondary

Federal

Total

600 Supplies

610 General Supplies

10.58

10.58

Total Supplies

\$10.58

\$10.58

Total 2240 Computer-Assisted Instruction Support Services

\$10.58

\$10.58

General Fund (10)

	<u>Elementary</u>	<u>Secondary</u>	<u>Federal</u>	<u>Total</u>
2250 School Library Services				
100 Personnel Services – Salaries				
100 Personnel Services – Salaries	222,184.21	137,176.54		359,360.75
Total Personnel Services – Salaries	\$222,184.21	\$137,176.54		\$359,360.75
200 Personnel Services – Employee Benefits				
220 Social Security Contributions	16,874.57	10,002.27		26,876.84
230 PSERS Retirement Contributions	73,072.90	45,680.70		118,753.60
270 Group Insurance – Self-Insurance	41,063.38	29,764.38		70,827.76
Total Personnel Services – Employee Benefits	\$131,010.85	\$85,447.35		\$216,458.20
300 Purchased Professional and Technical Services				
390 Other Purchased Professional and Technical Services		295.00		295.00
Total Purchased Professional and Technical Services		\$295.00		\$295.00
600 Supplies				
610 General Supplies	1,920.39	1,652.13		3,572.52
640 Books and Periodicals	11,922.64	24,637.79		36,560.43
Total Supplies	\$13,843.03	\$26,289.92		\$40,132.95
800 Other Objects				
810 Dues and Fees	3,950.38	4,035.99		7,986.37
Total Other Objects	\$3,950.38	\$4,035.99		\$7,986.37
Total 2250 School Library Services	\$370,988.47	\$253,244.80		\$624,233.27

General Fund (10)

	<u>Elementary</u>	<u>Secondary</u>	<u>Federal</u>	<u>Total</u>
2260 Instruction and Curriculum Development Services				
100 Personnel Services – Salaries				
100 Personnel Services – Salaries	141,303.38	171,433.24		312,736.62
Total Personnel Services – Salaries	\$141,303.38	\$171,433.24		\$312,736.62
200 Personnel Services – Employee Benefits				
220 Social Security Contributions	10,553.95	12,808.90		23,362.85
230 PSERS Retirement Contributions	46,620.02	56,744.44		103,364.46
270 Group Insurance – Self-Insurance	20,174.42	20,174.75		40,349.17
Total Personnel Services – Employee Benefits	\$77,348.39	\$89,728.09		\$167,076.48
500 Other Purchased Services				
580 Travel	1,284.02	1,284.06		2,568.08
Total Other Purchased Services	\$1,284.02	\$1,284.06		\$2,568.08
600 Supplies				
610 General Supplies	4,893.89	4,894.21		9,788.10
640 Books and Periodicals	1,725.00	1,725.00		3,450.00
Total Supplies	\$6,618.89	\$6,619.21		\$13,238.10
800 Other Objects				
810 Dues and Fees	302.10	302.10		604.20
Total Other Objects	\$302.10	\$302.10		\$604.20
Total 2260 Instruction and Curriculum Development Services	\$226,856.78	\$269,366.70		\$496,223.48

General Fund (10)

	<u>Elementary</u>	<u>Secondary</u>	<u>Federal</u>	<u>Total</u>
2270 Instructional Staff Professional Development Services				
100 Personnel Services – Salaries				
100 Personnel Services – Salaries	744.17	744.18		1,488.35
Total Personnel Services – Salaries	\$744.17	\$744.18		\$1,488.35
200 Personnel Services – Employee Benefits				
220 Social Security Contributions	55.08	55.09		110.17
230 PSERS Retirement Contributions	255.17	255.18		510.35
240 Tuition Reimbursement	86,184.25	130,190.49		216,374.74
Total Personnel Services – Employee Benefits	\$86,494.50	\$130,500.76		\$216,995.26
300 Purchased Professional and Technical Services				
322 Professional Educational Services – lus	33,932.47	33,932.48		67,864.95
360 Employee Training and Development Services	3,575.69	25,747.43		29,323.12
Total Purchased Professional and Technical Services	\$37,508.16	\$59,679.91		\$97,188.07
500 Other Purchased Services				
580 Travel	1,185.96	3,783.29		4,969.25
Total Other Purchased Services	\$1,185.96	\$3,783.29		\$4,969.25
Total 2270 Instructional Staff Professional Development Services	\$125,932.79	\$194,708.14		\$320,640.93

General Fund (10)

	<u>Elementary</u>	<u>Secondary</u>	<u>Federal</u>	<u>Total</u>
2300 Support Services – Administration				
100 Personnel Services – Salaries				
100 Personnel Services – Salaries	526,646.72	541,192.96		1,389,698.30
Total Personnel Services – Salaries	\$526,646.72	\$541,192.96		\$1,389,698.30
200 Personnel Services – Employee Benefits				
220 Social Security Contributions	38,463.05	39,851.40		100,237.62
230 PSERS Retirement Contributions	175,597.14	180,535.39		461,627.59
270 Group Insurance – Self-Insurance	155,105.64	116,353.46		317,082.92
Total Personnel Services – Employee Benefits	\$369,165.83	\$336,740.25		\$878,948.13
300 Purchased Professional and Technical Services				
310 Official / Administrative Services				68,418.68
330 Other Professional Services				106,570.42
340 Technical Services				15,536.02
390 Other Purchased Professional and Technical Services	2,305.67	6,290.64		10,511.92
Total Purchased Professional and Technical Services	\$2,305.67	\$6,290.64		\$201,037.04
400 Purchased Property Services				
440 Rentals		500.00		500.00
Total Purchased Property Services		\$500.00		\$500.00
500 Other Purchased Services				
520 Insurance – General				975.00
530 Communications	7,298.45	7,816.37		17,303.72
549 Other Advertising/Public Relations				2,793.03
550 Printing and Binding	89.40	29.80		119.20
580 Travel	667.10	393.29		6,203.80
Total Other Purchased Services	\$8,054.95	\$8,239.46		\$27,394.75
600 Supplies				
610 General Supplies	902.60	14,109.67		33,140.32
640 Books and Periodicals				295.97
650 Supplies & Fees – Technology Related				5,210.77
Total Supplies	\$902.60	\$14,109.67		\$38,647.06
800 Other Objects				
810 Dues and Fees	1,129.00	2,456.00		56,107.36
Total Other Objects	\$1,129.00	\$2,456.00		\$56,107.36
Total 2300 Support Services – Administration	\$908,204.77	\$909,528.98		\$2,592,332.64

General Fund (10)

2310 Board Services

Elementary

Secondary

Federal

Total

300 Purchased Professional and Technical Services

390 Other Purchased Professional and Technical Services

1,564.00

Total Purchased Professional and Technical Services

\$1,564.00

500 Other Purchased Services

520 Insurance – General

975.00

549 Other Advertising/Public Relations

1,046.84

Total Other Purchased Services

\$2,021.84

600 Supplies

610 General Supplies

3,250.49

650 Supplies & Fees – Technology Related

2,700.00

Total Supplies

\$5,950.49

800 Other Objects

810 Dues and Fees

15,765.88

Total Other Objects

\$15,765.88

Total 2310 Board Services

\$25,302.21

General Fund (10)

	<u>Elementary</u>	<u>Secondary</u>	<u>Federal</u>	<u>Total</u>
2330 Tax Assessment and Collection Services				
300 <u>Purchased Professional and Technical Services</u>				
310 Official / Administrative Services				68,418.68
340 Technical Services				275.00
Total Purchased Professional and Technical Services				\$68,693.68
500 <u>Other Purchased Services</u>				
530 Communications				2,188.90
Total Other Purchased Services				\$2,188.90
600 <u>Supplies</u>				
610 General Supplies				1,303.25
Total Supplies				\$1,303.25
800 <u>Other Objects</u>				
810 Dues and Fees				26,958.49
Total Other Objects				\$26,958.49
Total 2330 Tax Assessment and Collection Services				\$99,144.32

General Fund (10)

2340 Staff Relations and Negotiations Services

Elementary

Secondary

Federal

Total

100 Personnel Services – Salaries

100 Personnel Services – Salaries

79,125.71

Total Personnel Services – Salaries

\$79,125.71

200 Personnel Services – Employee Benefits

220 Social Security Contributions

5,661.68

230 PSERS Retirement Contributions

26,451.79

270 Group Insurance – Self-Insurance

17,914.84

Total Personnel Services – Employee Benefits

\$50,028.31

300 Purchased Professional and Technical Services

340 Technical Services

15,261.02

Total Purchased Professional and Technical Services

\$15,261.02

500 Other Purchased Services

549 Other Advertising/Public Relations

1,746.19

580 Travel

116.81

Total Other Purchased Services

\$1,863.00

600 Supplies

610 General Supplies

2,548.64

Total Supplies

\$2,548.64

800 Other Objects

810 Dues and Fees

253.00

Total Other Objects

\$253.00

Total 2340 Staff Relations and Negotiations Services

\$149,079.68

General Fund (10)

2350 Legal and Accounting Services

Elementary

Secondary

Federal

Total

300 Purchased Professional and Technical Services

330 Other Professional Services

106,447.95

Total Purchased Professional and Technical Services

\$106,447.95

Total 2350 Legal and Accounting Services

\$106,447.95

General Fund (10)

	<u>Elementary</u>	<u>Secondary</u>	<u>Federal</u>	<u>Total</u>
2360 Office of the Superintendent / Executive Director Services				
100 Personnel Services – Salaries				
100 Personnel Services – Salaries				242,732.91
Total Personnel Services – Salaries				\$242,732.91
200 Personnel Services – Employee Benefits				
220 Social Security Contributions				16,261.49
230 PSERS Retirement Contributions				79,043.27
270 Group Insurance – Self-Insurance				27,708.98
Total Personnel Services – Employee Benefits				\$123,013.74
300 Purchased Professional and Technical Services				
330 Other Professional Services				122.47
390 Other Purchased Professional and Technical Services				351.61
Total Purchased Professional and Technical Services				\$474.08
500 Other Purchased Services				
530 Communications	1,770.79	1,771.06		3,541.85
580 Travel				5,026.60
Total Other Purchased Services	\$1,770.79	\$1,771.06		\$8,568.45
600 Supplies				
610 General Supplies				11,025.67
640 Books and Periodicals				295.97
650 Supplies & Fees – Technology Related				2,510.77
Total Supplies				\$13,832.41
800 Other Objects				
810 Dues and Fees				9,544.99
Total Other Objects				\$9,544.99
Total 2360 Office of the Superintendent / Executive Director Services	\$1,770.79	\$1,771.06		\$398,166.58

General Fund (10)

	<u>Elementary</u>	<u>Secondary</u>	<u>Federal</u>	<u>Total</u>
2380 Office of the Principal Services				
100 Personnel Services – Salaries				
100 Personnel Services – Salaries	526,646.72	541,192.96		1,067,839.68
Total Personnel Services – Salaries	\$526,646.72	\$541,192.96		\$1,067,839.68
200 Personnel Services – Employee Benefits				
220 Social Security Contributions	38,463.05	39,851.40		78,314.45
230 PSERS Retirement Contributions	175,597.14	180,535.39		356,132.53
270 Group Insurance – Self-Insurance	155,105.64	116,353.46		271,459.10
Total Personnel Services – Employee Benefits	\$369,165.83	\$336,740.25		\$705,906.08
300 Purchased Professional and Technical Services				
390 Other Purchased Professional and Technical Services	2,305.67	6,290.64		8,596.31
Total Purchased Professional and Technical Services	\$2,305.67	\$6,290.64		\$8,596.31
400 Purchased Property Services				
440 Rentals		500.00		500.00
Total Purchased Property Services		\$500.00		\$500.00
500 Other Purchased Services				
530 Communications	5,527.66	6,045.31		11,572.97
550 Printing and Binding	89.40	29.80		119.20
580 Travel	667.10	393.29		1,060.39
Total Other Purchased Services	\$6,284.16	\$6,468.40		\$12,752.56
600 Supplies				
610 General Supplies	902.60	14,109.67		15,012.27
Total Supplies	\$902.60	\$14,109.67		\$15,012.27
800 Other Objects				
810 Dues and Fees	1,129.00	2,456.00		3,585.00
Total Other Objects	\$1,129.00	\$2,456.00		\$3,585.00
Total 2380 Office of the Principal Services	\$906,433.98	\$907,757.92		\$1,814,191.90

General Fund (10)

	<u>Elementary</u>	<u>Secondary</u>	<u>Federal</u>	<u>Total</u>
2400 Support Services – Pupil Health				
100 Personnel Services – Salaries				
100 Personnel Services – Salaries				247,910.82
Total Personnel Services – Salaries				\$247,910.82
200 Personnel Services – Employee Benefits				
220 Social Security Contributions				17,639.92
230 PSERS Retirement Contributions				82,672.85
270 Group Insurance – Self-Insurance				124,315.14
Total Personnel Services – Employee Benefits				\$224,627.91
300 Purchased Professional and Technical Services				
330 Other Professional Services				175.00
Total Purchased Professional and Technical Services				\$175.00
500 Other Purchased Services				
580 Travel				9.40
Total Other Purchased Services				\$9.40
600 Supplies				
610 General Supplies				6,123.74
Total Supplies				\$6,123.74
Total 2400 Support Services – Pupil Health				\$478,846.87

General Fund (10)

2430 Dental Services

Elementary

Secondary

Federal

Total

300 Purchased Professional and Technical Services

330 Other Professional Services

175.00

Total Purchased Professional and Technical Services

\$175.00

Total 2430 Dental Services

\$175.00

General Fund (10)

2440 Nursing Services

Elementary Secondary Federal Total

100 Personnel Services – Salaries
100 Personnel Services – Salaries 247,910.82

Total Personnel Services – Salaries \$247,910.82

200 Personnel Services – Employee Benefits
220 Social Security Contributions 17,639.92
230 PSERS Retirement Contributions 82,672.85
270 Group Insurance – Self-Insurance 124,315.14

Total Personnel Services – Employee Benefits \$224,627.91

500 Other Purchased Services
580 Travel 9.40

Total Other Purchased Services \$9.40

600 Supplies
610 General Supplies 6,123.74

Total Supplies \$6,123.74

Total 2440 Nursing Services \$478,671.87

General Fund (10)

	<u>Elementary</u>	<u>Secondary</u>	<u>Federal</u>	<u>Total</u>
2500 Support Services – Business				
100 Personnel Services – Salaries				
100 Personnel Services – Salaries				348,845.14
Total Personnel Services – Salaries				\$348,845.14
200 Personnel Services – Employee Benefits				
220 Social Security Contributions				25,790.86
230 PSERS Retirement Contributions				114,053.71
270 Group Insurance – Self-Insurance				66,149.70
Total Personnel Services – Employee Benefits				\$205,994.27
300 Purchased Professional and Technical Services				
330 Other Professional Services				29,259.60
340 Technical Services				54,334.07
390 Other Purchased Professional and Technical Services				2,590.68
Total Purchased Professional and Technical Services				\$86,184.35
500 Other Purchased Services				
530 Communications				10,197.85
550 Printing and Binding				12,714.15
580 Travel				1,340.24
Total Other Purchased Services				\$24,252.24
600 Supplies				
610 General Supplies				8,468.14
650 Supplies & Fees – Technology Related				20,153.33
Total Supplies				\$28,621.47
800 Other Objects				
810 Dues and Fees				15,486.61
Total Other Objects				\$15,486.61
Total 2500 Support Services – Business				\$709,384.08

General Fund (10)

2510 Fiscal Services

Elementary

Secondary

Federal

Total

100 Personnel Services – Salaries

100 Personnel Services – Salaries 336,586.73

Total Personnel Services – Salaries \$336,586.73

200 Personnel Services – Employee Benefits

220 Social Security Contributions 24,853.08

230 PSERS Retirement Contributions 110,012.25

270 Group Insurance – Self-Insurance 59,635.22

Total Personnel Services – Employee Benefits \$194,500.55

300 Purchased Professional and Technical Services

330 Other Professional Services 29,259.60

340 Technical Services 54,334.07

390 Other Purchased Professional and Technical Services 2,590.68

Total Purchased Professional and Technical Services \$86,184.35

500 Other Purchased Services

530 Communications 10,197.85

580 Travel 1,340.24

Total Other Purchased Services \$11,538.09

600 Supplies

610 General Supplies 8,468.14

650 Supplies & Fees – Technology Related 20,153.33

Total Supplies \$28,621.47

800 Other Objects

810 Dues and Fees 15,486.61

Total Other Objects \$15,486.61

Total 2510 Fiscal Services \$672,917.80

General Fund (10)

2512 Budgeting Services

Elementary

Secondary

Federal

Total

100 Personnel Services – Salaries

100 Personnel Services – Salaries

40,499.97

Total Personnel Services – Salaries

\$40,499.97

200 Personnel Services – Employee Benefits

220 Social Security Contributions

3,105.76

230 PSERS Retirement Contributions

13,288.46

Total Personnel Services – Employee Benefits

\$16,394.22

Total 2512 Budgeting Services

\$56,894.19

General Fund (10)

2513 Receiving and Disbursing Funds Services	<u>Elementary</u>	<u>Secondary</u>	<u>Federal</u>	<u>Total</u>
100 Personnel Services – Salaries				
100 Personnel Services – Salaries				9,855.04
Total Personnel Services – Salaries				\$9,855.04
200 Personnel Services – Employee Benefits				
220 Social Security Contributions				733.23
230 PSERS Retirement Contributions				3,300.33
270 Group Insurance – Self-Insurance				1,992.24
Total Personnel Services – Employee Benefits				\$6,025.80
Total 2513 Receiving and Disbursing Funds Services				\$15,880.84

General Fund (10)

2514 Payroll Services

100 Personnel Services – Salaries

100 Personnel Services – Salaries

Elementary

Secondary

Federal

Total

23,639.38

Total Personnel Services – Salaries

\$23,639.38

200 Personnel Services – Employee Benefits

220 Social Security Contributions

1,569.92

230 PSERS Retirement Contributions

7,916.58

270 Group Insurance – Self-Insurance

10,196.40

Total Personnel Services – Employee Benefits

\$19,682.90

Total 2514 Payroll Services

\$43,322.28

General Fund (10)

	<u>Elementary</u>	<u>Secondary</u>	<u>Federal</u>	<u>Total</u>
2530 Warehousing and Distributing Services				
100 Personnel Services – Salaries				
100 Personnel Services – Salaries				12,258.41
Total Personnel Services – Salaries				\$12,258.41
200 Personnel Services – Employee Benefits				
220 Social Security Contributions				937.78
230 PSERS Retirement Contributions				4,041.46
270 Group Insurance – Self-Insurance				6,514.48
Total Personnel Services – Employee Benefits				\$11,493.72
Total 2530 Warehousing and Distributing Services				\$23,752.13

General Fund (10)

2540 Printing, Publishing and Duplicating Services

Elementary

Secondary

Federal

Total

500 Other Purchased Services

550 Printing and Binding

12,714.15

Total Other Purchased Services

\$12,714.15

Total 2540 Printing, Publishing and Duplicating Services

\$12,714.15

General Fund (10)

	<u>Elementary</u>	<u>Secondary</u>	<u>Federal</u>	<u>Total</u>
2610 Supervision of Operation and Maintenance of Plant Services				
100 Personnel Services – Salaries				
100 Personnel Services – Salaries				701,999.86
Total Personnel Services – Salaries				\$701,999.86
200 Personnel Services – Employee Benefits				
220 Social Security Contributions				51,841.59
230 PSERS Retirement Contributions				234,276.43
270 Group Insurance – Self-Insurance				321,671.71
Total Personnel Services – Employee Benefits				\$607,789.73
300 Purchased Professional and Technical Services				
330 Other Professional Services				875.00
390 Other Purchased Professional and Technical Services				11,183.25
Total Purchased Professional and Technical Services				\$12,058.25
400 Purchased Property Services				
430 Repairs and Maintenance Services				4,581.48
440 Rentals				5,220.51
Total Purchased Property Services				\$9,801.99
500 Other Purchased Services				
523 General Property and Liability Insurance				142,434.43
529 Other Insurance				811.25
530 Communications				31,387.59
580 Travel				26.97
Total Other Purchased Services				\$174,660.24
800 Other Objects				
810 Dues and Fees				219.00
Total Other Objects				\$219.00
Total 2610 Supervision of Operation and Maintenance of Plant Services				\$1,506,529.07

General Fund (10)

2611 Supervision of Operation and Maintenance of Plant Services – Head of Component

Elementary

Secondary

Federal

Total

100 Personnel Services – Salaries

100 Personnel Services – Salaries

665,408.11

Total Personnel Services – Salaries

\$665,408.11

200 Personnel Services – Employee Benefits

220 Social Security Contributions

49,056.52

230 PSERS Retirement Contributions

222,043.82

270 Group Insurance – Self-Insurance

314,246.91

Total Personnel Services – Employee Benefits

\$585,347.25

300 Purchased Professional and Technical Services

330 Other Professional Services

875.00

390 Other Purchased Professional and Technical Services

11,183.25

Total Purchased Professional and Technical Services

\$12,058.25

400 Purchased Property Services

430 Repairs and Maintenance Services

4,581.48

440 Rentals

5,220.51

Total Purchased Property Services

\$9,801.99

500 Other Purchased Services

523 General Property and Liability Insurance

142,434.43

529 Other Insurance

811.25

530 Communications

31,387.59

580 Travel

26.97

Total Other Purchased Services

\$174,660.24

800 Other Objects

810 Dues and Fees

219.00

Total Other Objects

\$219.00

Total 2611 Supervision of Operation and Maintenance of Plant Services – Head of Component

\$1,447,494.84

General Fund (10)

2619 Supervision of Operation and Maintenance of Plant Services – All Other Supervision

Elementary

Secondary

Federal

Total

100 Personnel Services – Salaries

100 Personnel Services – Salaries

36,591.75

Total Personnel Services – Salaries

\$36,591.75

200 Personnel Services – Employee Benefits

220 Social Security Contributions

2,785.07

230 PSERS Retirement Contributions

12,232.61

270 Group Insurance – Self-Insurance

7,424.80

Total Personnel Services – Employee Benefits

\$22,442.48

Total 2619 Supervision of Operation and Maintenance of Plant Services – All Other Supervision

\$59,034.23

General Fund (10)

	<u>Elementary</u>	<u>Secondary</u>	<u>Federal</u>	<u>Total</u>
2620 Operation of Buildings Services				
100 Personnel Services – Salaries				
100 Personnel Services – Salaries				621,233.01
Total Personnel Services – Salaries				\$621,233.01
200 Personnel Services – Employee Benefits				
220 Social Security Contributions				45,358.12
230 PSERS Retirement Contributions				207,724.18
270 Group Insurance – Self-Insurance				190,821.71
Total Personnel Services – Employee Benefits				\$443,904.01
300 Purchased Professional and Technical Services				
330 Other Professional Services				15,941.44
350 Security / Safety Services				1,754.67
Total Purchased Professional and Technical Services				\$17,696.11
400 Purchased Property Services				
410 Cleaning Services				35,618.30
420 Utility Services				164,280.56
430 Repairs and Maintenance Services				153,517.04
460 Extermination Services				3,855.00
Total Purchased Property Services				\$357,270.90
600 Supplies				
610 General Supplies	152,006.35	107,402.62		259,408.97
620 Energy				715,089.70
Total Supplies	\$152,006.35	\$107,402.62		\$974,498.67
700 Property				
752 Capital Equipment – Original and Additional				7,396.81
Total Property				\$7,396.81
Total 2620 Operation of Buildings Services	\$152,006.35	\$107,402.62		\$2,421,999.51

General Fund (10)

	<u>Elementary</u>	<u>Secondary</u>	<u>Federal</u>	<u>Total</u>
2630 Care and Upkeep of Grounds Services				
300 <u>Purchased Professional and Technical Services</u>				
330 Other Professional Services				500.00
Total Purchased Professional and Technical Services				\$500.00
400 <u>Purchased Property Services</u>				
410 Cleaning Services				50,794.90
Total Purchased Property Services				\$50,794.90
600 <u>Supplies</u>				
610 General Supplies	10,488.03	8,278.75		18,766.78
Total Supplies	\$10,488.03	\$8,278.75		\$18,766.78
Total 2630 Care and Upkeep of Grounds Services	\$10,488.03	\$8,278.75		\$70,061.68

General Fund (10)

	<u>Elementary</u>	<u>Secondary</u>	<u>Federal</u>	<u>Total</u>
2640 Care and Upkeep of Equipment Services				
100 Personnel Services – Salaries				
100 Personnel Services – Salaries				27,893.90
Total Personnel Services – Salaries				\$27,893.90
200 Personnel Services – Employee Benefits				
220 Social Security Contributions				2,029.18
230 PSERS Retirement Contributions				9,340.93
270 Group Insurance – Self-Insurance				10,512.40
Total Personnel Services – Employee Benefits				\$21,882.51
400 Purchased Property Services				
430 Repairs and Maintenance Services				370.62
Total Purchased Property Services				\$370.62
600 Supplies				
610 General Supplies	133.68	133.68		267.36
620 Energy				89.50
Total Supplies	\$133.68	\$133.68		\$356.86
Total 2640 Care and Upkeep of Equipment Services	\$133.68	\$133.68		\$50,503.89

General Fund (10)

	<u>Elementary</u>	<u>Secondary</u>	<u>Federal</u>	<u>Total</u>
2650 Vehicle Operation and Maintenance Services (Other Than Student Transportation Vehicles)				
400 Purchased Property Services				
430 Repairs and Maintenance Services				5,685.99
Total Purchased Property Services				\$5,685.99
600 Supplies				
610 General Supplies	437.00	437.00		874.00
620 Energy				12,317.89
Total Supplies	\$437.00	\$437.00		\$13,191.89
Total 2650 Vehicle Operation and Maintenance Services (Other Than Student Transportation Vehicles)	\$437.00	\$437.00		\$18,877.88

General Fund (10)

	<u>Elementary</u>	<u>Secondary</u>	<u>Federal</u>	<u>Total</u>
2660 Safety and Security Services				
300 <u>Purchased Professional and Technical Services</u>				
350 Security / Safety Services				82,944.38
Total Purchased Professional and Technical Services				\$82,944.38
500 <u>Other Purchased Services</u>				
580 Travel				740.00
Total Other Purchased Services				\$740.00
600 <u>Supplies</u>				
610 General Supplies	191.69	191.72		383.41
Total Supplies	\$191.69	\$191.72		\$383.41
Total 2660 Safety and Security Services	\$191.69	\$191.72		\$84,067.79

General Fund (10)

	<u>Elementary</u>	<u>Secondary</u>	<u>Federal</u>	<u>Total</u>
2700 Student Transportation Services				
100 Personnel Services – Salaries				
100 Personnel Services – Salaries				46,092.08
Total Personnel Services – Salaries				\$46,092.08
200 Personnel Services – Employee Benefits				
220 Social Security Contributions				3,341.58
230 PSERS Retirement Contributions				15,426.64
270 Group Insurance – Self-Insurance				13,769.65
Total Personnel Services – Employee Benefits				\$32,537.87
300 Purchased Professional and Technical Services				
340 Technical Services				3,700.00
390 Other Purchased Professional and Technical Services				3,700.50
Total Purchased Professional and Technical Services				\$7,400.50
400 Purchased Property Services				
430 Repairs and Maintenance Services				2,247.42
Total Purchased Property Services				\$2,247.42
500 Other Purchased Services				
513 Contracted Carriers				3,024,026.11
516 Student Transportation Services From the IU				600.13
530 Communications				20.25
580 Travel				96.51
Total Other Purchased Services				\$3,024,743.00
600 Supplies				
610 General Supplies				5,020.55
620 Energy				5,127.39
Total Supplies				\$10,147.94
Total 2700 Student Transportation Services				\$3,123,168.81

General Fund (10)

	<u>Elementary</u>	<u>Secondary</u>	<u>Federal</u>	<u>Total</u>
2710 Supervision of Student Transportation Services				
100 Personnel Services – Salaries				
100 Personnel Services – Salaries				46,092.08
Total Personnel Services – Salaries				\$46,092.08
200 Personnel Services – Employee Benefits				
220 Social Security Contributions				3,341.58
230 PSERS Retirement Contributions				15,426.64
270 Group Insurance – Self-Insurance				13,769.65
Total Personnel Services – Employee Benefits				\$32,537.87
300 Purchased Professional and Technical Services				
340 Technical Services				3,700.00
390 Other Purchased Professional and Technical Services				915.50
Total Purchased Professional and Technical Services				\$4,615.50
500 Other Purchased Services				
580 Travel				96.51
Total Other Purchased Services				\$96.51
600 Supplies				
610 General Supplies				2,754.61
Total Supplies				\$2,754.61
Total 2710 Supervision of Student Transportation Services				\$86,096.57

General Fund (10)

	<u>Elementary</u>	<u>Secondary</u>	<u>Federal</u>	<u>Total</u>
2711 Supervision of Student Transportation Services – Head of Component				
100 Personnel Services – Salaries				
100 Personnel Services – Salaries				30,055.93
Total Personnel Services – Salaries				\$30,055.93
200 Personnel Services – Employee Benefits				
220 Social Security Contributions				2,175.26
230 PSERS Retirement Contributions				10,065.74
270 Group Insurance – Self-Insurance				10,512.40
Total Personnel Services – Employee Benefits				\$22,753.40
300 Purchased Professional and Technical Services				
390 Other Purchased Professional and Technical Services				915.50
Total Purchased Professional and Technical Services				\$915.50
500 Other Purchased Services				
580 Travel				96.51
Total Other Purchased Services				\$96.51
600 Supplies				
610 General Supplies				1,659.61
Total Supplies				\$1,659.61
Total 2711 Supervision of Student Transportation Services – Head of Component				\$55,480.95

General Fund (10)

	<u>Elementary</u>	<u>Secondary</u>	<u>Federal</u>	<u>Total</u>
2719 Supervision of Student Transportation Services – All Other Supervision				
100 Personnel Services – Salaries				
100 Personnel Services – Salaries				16,036.15
Total Personnel Services – Salaries				\$16,036.15
200 Personnel Services – Employee Benefits				
220 Social Security Contributions				1,166.32
230 PSERS Retirement Contributions				5,360.90
270 Group Insurance – Self-Insurance				3,257.25
Total Personnel Services – Employee Benefits				\$9,784.47
300 Purchased Professional and Technical Services				
340 Technical Services				3,700.00
Total Purchased Professional and Technical Services				\$3,700.00
600 Supplies				
610 General Supplies				1,095.00
Total Supplies				\$1,095.00
Total 2719 Supervision of Student Transportation Services – All Other Supervision				\$30,615.62

General Fund (10)

2720 Vehicle Operation Services

Elementary

Secondary

Federal

Total

300 Purchased Professional and Technical Services

390 Other Purchased Professional and Technical Services

2,785.00

Total Purchased Professional and Technical Services

\$2,785.00

500 Other Purchased Services

513 Contracted Carriers

2,554,620.91

516 Student Transportation Services From the IU

600.13

Total Other Purchased Services

\$2,555,221.04

600 Supplies

610 General Supplies

2,265.94

620 Energy

109.21

Total Supplies

\$2,375.15

Total 2720 Vehicle Operation Services

\$2,560,381.19

General Fund (10)

	<u>Elementary</u>	<u>Secondary</u>	<u>Federal</u>	<u>Total</u>
2750 Nonpublic Transportation				
400 <u>Purchased Property Services</u>				
430 Repairs and Maintenance Services				2,247.42
Total Purchased Property Services				\$2,247.42
500 <u>Other Purchased Services</u>				
513 Contracted Carriers				469,405.20
530 Communications				20.25
Total Other Purchased Services				\$469,425.45
600 <u>Supplies</u>				
620 Energy				5,018.18
Total Supplies				\$5,018.18
Total 2750 Nonpublic Transportation				\$476,691.05

General Fund (10)

2800 Support Services – Central

Elementary

Secondary

Federal

Total

100 Personnel Services – Salaries

100 Personnel Services – Salaries

408,088.53

Total Personnel Services – Salaries

\$408,088.53

200 Personnel Services – Employee Benefits

220 Social Security Contributions

30,014.40

230 PSERS Retirement Contributions

132,236.52

240 Tuition Reimbursement

46,494.88

270 Group Insurance – Self-Insurance

87,277.03

Total Personnel Services – Employee Benefits

\$296,022.83

300 Purchased Professional and Technical Services

329 Professional Educational Services – Other

5,240.64

340 Technical Services

89,380.16

360 Employee Training and Development Services

13,753.07

390 Other Purchased Professional and Technical Services

4,067.38

Total Purchased Professional and Technical Services

\$112,441.25

400 Purchased Property Services

430 Repairs and Maintenance Services

23,528.45

440 Rentals

890,917.66

Total Purchased Property Services

\$914,446.11

500 Other Purchased Services

530 Communications

136.04

550 Printing and Binding

77,823.17

580 Travel

2,474.24

Total Other Purchased Services

\$80,433.45

600 Supplies

610 General Supplies

177,780.24

640 Books and Periodicals

99.96

650 Supplies & Fees – Technology Related

287,422.46

Total Supplies

\$465,302.66

Total 2800 Support Services – Central

\$2,276,734.83

General Fund (10)

2820 Information Services

Elementary

Secondary

Federal

Total

100 Personnel Services – Salaries

100 Personnel Services – Salaries 333,299.44

Total Personnel Services – Salaries \$333,299.44

200 Personnel Services – Employee Benefits

220 Social Security Contributions 24,582.38

230 PSERS Retirement Contributions 111,504.49

270 Group Insurance – Self-Insurance 66,082.56

Total Personnel Services – Employee Benefits \$202,169.43

300 Purchased Professional and Technical Services

340 Technical Services 89,380.16

390 Other Purchased Professional and Technical Services 4,067.38

Total Purchased Professional and Technical Services \$93,447.54

400 Purchased Property Services

430 Repairs and Maintenance Services 23,528.45

440 Rentals 890,917.66

Total Purchased Property Services \$914,446.11

500 Other Purchased Services

530 Communications 136.04

550 Printing and Binding 77,823.17

580 Travel 2,474.24

Total Other Purchased Services \$80,433.45

600 Supplies

610 General Supplies 173,139.26

640 Books and Periodicals 99.96

650 Supplies & Fees – Technology Related 287,422.46

Total Supplies \$460,661.68

Total 2820 Information Services \$2,084,457.65

General Fund (10)

2821 Supervision of Information Services

Elementary

Secondary

Federal

Total

100 Personnel Services – Salaries

100 Personnel Services – Salaries 333,299.44

Total Personnel Services – Salaries

\$333,299.44

200 Personnel Services – Employee Benefits

220 Social Security Contributions 24,582.38

230 PSERS Retirement Contributions 111,504.49

270 Group Insurance – Self-Insurance 66,082.56

Total Personnel Services – Employee Benefits

\$202,169.43

300 Purchased Professional and Technical Services

340 Technical Services 89,020.16

390 Other Purchased Professional and Technical Services 4,067.38

Total Purchased Professional and Technical Services

\$93,087.54

400 Purchased Property Services

430 Repairs and Maintenance Services 23,528.45

440 Rentals 890,917.66

Total Purchased Property Services

\$914,446.11

500 Other Purchased Services

530 Communications 136.04

550 Printing and Binding 77,823.17

580 Travel 2,474.24

Total Other Purchased Services

\$80,433.45

600 Supplies

610 General Supplies 173,139.26

640 Books and Periodicals 99.96

650 Supplies & Fees – Technology Related 287,422.46

Total Supplies

\$460,661.68

Total 2821 Supervision of Information Services

\$2,084,097.65

General Fund (10)

2823 Public Information Services

Elementary

Secondary

Federal

Total

300 Purchased Professional and Technical Services

340 Technical Services

360.00

Total Purchased Professional and Technical Services

\$360.00

Total 2823 Public Information Services

\$360.00

General Fund (10)

2830 Staff Services

Elementary

Secondary

Federal

Total

100 Personnel Services – Salaries

100 Personnel Services – Salaries

74,789.09

Total Personnel Services – Salaries

\$74,789.09

200 Personnel Services – Employee Benefits

220 Social Security Contributions

5,432.02

230 PSERS Retirement Contributions

20,732.03

240 Tuition Reimbursement

46,494.88

270 Group Insurance – Self-Insurance

21,194.47

Total Personnel Services – Employee Benefits

\$93,853.40

300 Purchased Professional and Technical Services

329 Professional Educational Services – Other

5,240.64

360 Employee Training and Development Services

13,753.07

Total Purchased Professional and Technical Services

\$18,993.71

600 Supplies

610 General Supplies

4,640.98

Total Supplies

\$4,640.98

Total 2830 Staff Services

\$192,277.18

General Fund (10)

	<u>Elementary</u>	<u>Secondary</u>	<u>Federal</u>	<u>Total</u>
2831 Supervision of Staff Services				
100 Personnel Services – Salaries				
100 Personnel Services – Salaries				61,986.23
Total Personnel Services – Salaries				\$61,986.23
200 Personnel Services – Employee Benefits				
220 Social Security Contributions				4,452.64
230 PSERS Retirement Contributions				20,732.03
270 Group Insurance – Self-Insurance				17,937.22
Total Personnel Services – Employee Benefits				\$43,121.89
600 Supplies				
610 General Supplies				529.75
Total Supplies				\$529.75
Total 2831 Supervision of Staff Services				\$105,637.87

General Fund (10)

	<u>Elementary</u>	<u>Secondary</u>	<u>Federal</u>	<u>Total</u>
2834 Staff Development Services – Non-Instructional, Certified Staff Only				
200 Personnel Services – Employee Benefits				
240 Tuition Reimbursement				45,192.88
Total Personnel Services – Employee Benefits				\$45,192.88
300 Purchased Professional and Technical Services				
360 Employee Training and Development Services				12,289.07
Total Purchased Professional and Technical Services				\$12,289.07
Total 2834 Staff Development Services – Non-Instructional, Certified Staff Only				\$57,481.95

General Fund (10)

2835 Health Services

Elementary

Secondary

Federal

Total

600 Supplies

610 General Supplies

4,111.23

Total Supplies

\$4,111.23

Total 2835 Health Services

\$4,111.23

General Fund (10)

	<u>Elementary</u>	<u>Secondary</u>	<u>Federal</u>	<u>Total</u>
2836 Staff Development Services – Non-Instructional, Non-Certified Staff Only				
200 Personnel Services – Employee Benefits				
240 Tuition Reimbursement				1,302.00
Total Personnel Services – Employee Benefits				\$1,302.00
300 Purchased Professional and Technical Services				
360 Employee Training and Development Services				1,464.00
Total Purchased Professional and Technical Services				\$1,464.00
Total 2836 Staff Development Services – Non-Instructional, Non-Certified Staff Only				\$2,766.00

General Fund (10)

2839 Other Staff Services

Elementary

Secondary

Federal

Total

100 Personnel Services – Salaries

100 Personnel Services – Salaries

12,802.86

Total Personnel Services – Salaries

\$12,802.86

200 Personnel Services – Employee Benefits

220 Social Security Contributions

979.38

270 Group Insurance – Self-Insurance

3,257.25

Total Personnel Services – Employee Benefits

\$4,236.63

300 Purchased Professional and Technical Services

329 Professional Educational Services – Other

5,240.64

Total Purchased Professional and Technical Services

\$5,240.64

Total 2839 Other Staff Services

\$22,280.13

General Fund (10)

	<u>Elementary</u>	<u>Secondary</u>	<u>Federal</u>	<u>Total</u>
2900 Other Support Services				
500 Other Purchased Services				
595 IU Payments By Withholding				29,219.96
Total Other Purchased Services				\$29,219.96
800 Other Objects				
810 Dues and Fees				7,003.50
Total Other Objects				\$7,003.50
Total 2900 Other Support Services				\$36,223.46

General Fund (10)

2910 Support Services Not Listed Elsewhere In the 2000 Series

Elementary

Secondary

Federal

Total

500 Other Purchased Services

595 IU Payments By Withholding

29,219.96

Total Other Purchased Services

\$29,219.96

800 Other Objects

810 Dues and Fees

7,003.50

Total Other Objects

\$7,003.50

Total 2910 Support Services Not Listed Elsewhere In the 2000 Series

\$36,223.46

General Fund (10)

3000 Operation of Non-Instructional Services

Total

100 Personnel Services – Salaries

100 Personnel Services – Salaries 571,200.37

Total Personnel Services – Salaries \$571,200.37

200 Personnel Services – Employee Benefits

220 Social Security Contributions 43,392.77

230 PSERS Retirement Contributions 120,012.82

270 Group Insurance – Self-Insurance 1,475.91

Total Personnel Services – Employee Benefits \$164,881.50

300 Purchased Professional and Technical Services

330 Other Professional Services 5,209.56

350 Security / Safety Services 5,118.30

390 Other Purchased Professional and Technical Services 112,604.08

Total Purchased Professional and Technical Services \$122,931.94

400 Purchased Property Services

440 Rentals 102,300.00

Total Purchased Property Services \$102,300.00

500 Other Purchased Services

510 Student Transportation Services 72,694.01

520 Insurance – General 32,651.00

580 Travel 15,208.25

Total Other Purchased Services \$120,553.26

600 Supplies

610 General Supplies 129,135.22

Total Supplies \$129,135.22

800 Other Objects

810 Dues and Fees 7,505.14

890 Miscellaneous Expenditures 3,798.03

Total Other Objects \$11,303.17

Total 3000 Operation of Non-Instructional Services \$1,222,305.46

General Fund (10)

3200 Student Activities

Elementary

Secondary

Federal

Total

100 Personnel Services – Salaries

100 Personnel Services – Salaries

571,200.37

Total Personnel Services – Salaries

\$571,200.37

200 Personnel Services – Employee Benefits

220 Social Security Contributions

43,392.77

230 PSERS Retirement Contributions

120,012.82

270 Group Insurance – Self-Insurance

1,475.91

Total Personnel Services – Employee Benefits

\$164,881.50

300 Purchased Professional and Technical Services

330 Other Professional Services

2,475.00

350 Security / Safety Services

5,118.30

390 Other Purchased Professional and Technical Services

89,286.00

Total Purchased Professional and Technical Services

\$96,879.30

400 Purchased Property Services

440 Rentals

102,300.00

Total Purchased Property Services

\$102,300.00

500 Other Purchased Services

510 Student Transportation Services

72,694.01

520 Insurance – General

32,651.00

580 Travel

15,208.25

Total Other Purchased Services

\$120,553.26

600 Supplies

610 General Supplies

129,135.22

Total Supplies

\$129,135.22

800 Other Objects

810 Dues and Fees

7,505.14

Total Other Objects

\$7,505.14

Total 3200 Student Activities

\$1,192,454.79

General Fund (10)

3300 Community Services

Elementary

Secondary

Federal

Total

300 Purchased Professional and Technical Services

330 Other Professional Services

2,734.56

390 Other Purchased Professional and Technical Services

23,318.08

Total Purchased Professional and Technical Services

\$26,052.64

800 Other Objects

890 Miscellaneous Expenditures

3,798.03

Total Other Objects

\$3,798.03

Total 3300 Community Services

\$29,850.67

General Fund (10)

4000 Facilities Acquisition, Construction and Improvement Services

Total

700 Property

710 Land and Improvements

1,930,663.23

Total Property

\$1,930,663.23

Total 4000 Facilities Acquisition, Construction and Improvement Services

\$1,930,663.23

LEA : 113364403 Manheim Central SD

Printed 1/2/2020 2:18:34 PM

General Fund (10)

4100 Site Acquisition Services – Original and Additional

Elementary

Secondary

Federal

Total

700 Property

710 Land and Improvements

1,930,663.23

Total Property

\$1,930,663.23

Total 4100 Site Acquisition Services – Original and Additional

\$1,930,663.23

General Fund (10)

5000 Other Expenditures and Financing Uses

Total

800 Other Objects

830 Interest 2,836,924.37

Total Other Objects \$2,836,924.37

900 Other Uses of Funds

910 Redemption of Principal 3,335,000.00

939 Other Fund Transfers 98,422.07

Total Other Uses of Funds \$3,433,422.07

Total 5000 Other Expenditures and Financing Uses \$6,270,346.44

General Fund (10)

	<u>Elementary</u>	<u>Secondary</u>	<u>Federal</u>	<u>Total</u>
5100 Debt Service / Other Expenditures and Financing Uses				
800 Other Objects				
830 Interest				2,836,924.37
Total Other Objects				\$2,836,924.37
900 Other Uses of Funds				
910 Redemption of Principal				3,335,000.00
Total Other Uses of Funds				\$3,335,000.00
Total 5100 Debt Service / Other Expenditures and Financing Uses				\$6,171,924.37

LEA : 113364403 Manheim Central SD

Printed 1/2/2020 2:18:44 PM

General Fund (10)

5110 Debt Service

Elementary

Secondary

Federal

Total

800 Other Objects

830 Interest

2,836,924.37

Total Other Objects

\$2,836,924.37

900 Other Uses of Funds

910 Redemption of Principal

3,335,000.00

Total Other Uses of Funds

\$3,335,000.00

Total 5110 Debt Service

\$6,171,924.37

General Fund (10)

5200 Interfund Transfers – Out

Elementary

Secondary

Federal

Total

900 Other Uses of Funds

939 Other Fund Transfers

98,422.07

Total Other Uses of Funds

\$98,422.07

Total 5200 Interfund Transfers – Out

\$98,422.07

General Fund (10)

5250 Enterprise Fund Transfers

Elementary

Secondary

Federal

Total

900 Other Uses of Funds

939 Other Fund Transfers

98,422.07

Total Other Uses of Funds

\$98,422.07

Total 5250 Enterprise Fund Transfers

\$98,422.07

Capital Reserve Fund - § 1431 (32)

2000 Support Services

Total

300 Purchased Professional and Technical Services

390 Other Purchased Professional and Technical Services 29,133.95

Total Purchased Professional and Technical Services \$29,133.95

400 Purchased Property Services

430 Repairs and Maintenance Services 58,630.22

Total Purchased Property Services \$58,630.22

600 Supplies

610 General Supplies 12,496.00

650 Supplies & Fees – Technology Related 2,845.44

Total Supplies \$15,341.44

700 Property

752 Capital Equipment – Original and Additional 450,406.52

758 Capitalized Technology Software - Original 98,122.48

Total Property \$548,529.00

800 Other Objects

810 Dues and Fees 78.00

Total Other Objects \$78.00

Total 2000 Support Services \$651,712.61

LEA : 113364403 Manheim Central SD

Printed 1/2/2020 2:18:17 PM

Capital Reserve Fund - § 1431 (32)

2500 Support Services – Business

Elementary

Secondary

Federal

Total

700 Property

758 Capitalized Technology Software - Original

98,122.48

Total Property

\$98,122.48

800 Other Objects

810 Dues and Fees

78.00

Total Other Objects

\$78.00

Total 2500 Support Services – Business

\$98,200.48

LEA : 113364403 Manheim Central SD

Printed 1/2/2020 2:18:17 PM

Capital Reserve Fund - § 1431 (32)

2510 Fiscal Services	<u>Elementary</u>	<u>Secondary</u>	<u>Federal</u>	<u>Total</u>
700 <u>Property</u>				
758 Capitalized Technology Software - Original				98,122.48
Total Property				\$98,122.48
800 <u>Other Objects</u>				
810 Dues and Fees				78.00
Total Other Objects				\$78.00
Total 2510 Fiscal Services				\$98,200.48

LEA : 113364403 Manheim Central SD

Printed 1/2/2020 2:18:17 PM

Capital Reserve Fund - § 1431 (32)

2511 Supervision of Fiscal Services - Head of Component

Elementary

Secondary

Federal

Total

700 Property

758 Capitalized Technology Software - Original

98,122.48

Total Property

\$98,122.48

800 Other Objects

810 Dues and Fees

78.00

Total Other Objects

\$78.00

Total 2511 Supervision of Fiscal Services - Head of Component

\$98,200.48

Capital Reserve Fund - § 1431 (32)

2600 Operation and Maintenance of Plant Services

Elementary

Secondary

Federal

Total

300 Purchased Professional and Technical Services

390 Other Purchased Professional and Technical Services

29,133.95

Total Purchased Professional and Technical Services

\$29,133.95

400 Purchased Property Services

430 Repairs and Maintenance Services

58,630.22

Total Purchased Property Services

\$58,630.22

600 Supplies

610 General Supplies

12,496.00

12,496.00

Total Supplies

\$12,496.00

\$12,496.00

700 Property

752 Capital Equipment – Original and Additional

100,856.52

Total Property

\$100,856.52

Total 2600 Operation and Maintenance of Plant Services

\$12,496.00

\$201,116.69

Capital Reserve Fund - § 1431 (32)

	<u>Elementary</u>	<u>Secondary</u>	<u>Federal</u>	<u>Total</u>
2610 Supervision of Operation and Maintenance of Plant Services				
300 <u>Purchased Professional and Technical Services</u>				
390 Other Purchased Professional and Technical Services				29,133.95
Total Purchased Professional and Technical Services				\$29,133.95
600 <u>Supplies</u>				
610 General Supplies	12,496.00			12,496.00
Total Supplies	\$12,496.00			\$12,496.00
700 <u>Property</u>				
752 Capital Equipment – Original and Additional				30,893.52
Total Property				\$30,893.52
Total 2610 Supervision of Operation and Maintenance of Plant Services	\$12,496.00			\$72,523.47

Capital Reserve Fund - § 1431 (32)

	<u>Elementary</u>	<u>Secondary</u>	<u>Federal</u>	<u>Total</u>
2611 Supervision of Operation and Maintenance of Plant Services – Head of Component				
300 <u>Purchased Professional and Technical Services</u>				
390 Other Purchased Professional and Technical Services				29,133.95
Total Purchased Professional and Technical Services				\$29,133.95
600 <u>Supplies</u>				
610 General Supplies	12,496.00			12,496.00
Total Supplies	\$12,496.00			\$12,496.00
700 <u>Property</u>				
752 Capital Equipment – Original and Additional				30,893.52
Total Property				\$30,893.52
Total 2611 Supervision of Operation and Maintenance of Plant Services – Head of Component	\$12,496.00			\$72,523.47

Capital Reserve Fund - § 1431 (32)

	<u>Elementary</u>	<u>Secondary</u>	<u>Federal</u>	<u>Total</u>
2620 Operation of Buildings Services				
400 <u>Purchased Property Services</u>				
430 Repairs and Maintenance Services				58,630.22
Total Purchased Property Services				\$58,630.22
700 <u>Property</u>				
752 Capital Equipment – Original and Additional				69,963.00
Total Property				\$69,963.00
Total 2620 Operation of Buildings Services				\$128,593.22

LEA : 113364403 Manheim Central SD

Printed 1/2/2020 2:18:17 PM

Capital Reserve Fund - § 1431 (32)

2800 Support Services – Central

Elementary

Secondary

Federal

Total

600 Supplies

650 Supplies & Fees – Technology Related

2,845.44

Total Supplies

\$2,845.44

700 Property

752 Capital Equipment – Original and Additional

349,550.00

Total Property

\$349,550.00

Total 2800 Support Services – Central

\$352,395.44

LEA : 113364403 Manheim Central SD

Printed 1/2/2020 2:18:17 PM

Capital Reserve Fund - § 1431 (32)

2820 Information Services

Elementary

Secondary

Federal

Total

600 Supplies

650 Supplies & Fees – Technology Related

2,845.44

Total Supplies

\$2,845.44

700 Property

752 Capital Equipment – Original and Additional

349,550.00

Total Property

\$349,550.00

Total 2820 Information Services

\$352,395.44

LEA : 113364403 Manheim Central SD

Printed 1/2/2020 2:18:17 PM

Capital Reserve Fund - § 1431 (32)

2821 Supervision of Information Services

Elementary

Secondary

Federal

Total

600 Supplies

650 Supplies & Fees – Technology Related

2,845.44

Total Supplies

\$2,845.44

700 Property

752 Capital Equipment – Original and Additional

349,550.00

Total Property

\$349,550.00

Total 2821 Supervision of Information Services

\$352,395.44

Other Capital Projects Fund (39)

2000 Support Services

400 Purchased Property Services

440 Rentals 334,235.00

Total Purchased Property Services \$334,235.00

800 Other Objects

810 Dues and Fees 1,349.41

Total Other Objects \$1,349.41

Total 2000 Support Services \$335,584.41

LEA : 113364403 Manheim Central SD

Printed 1/2/2020 2:18:22 PM

Other Capital Projects Fund (39)

2300 Support Services – Administration

Elementary

Secondary

Federal

Total

800 Other Objects

810 Dues and Fees

1,349.41

Total Other Objects

\$1,349.41

Total 2300 Support Services – Administration

\$1,349.41

LEA : 113364403 Manheim Central SD

Printed 1/2/2020 2:18:22 PM

Other Capital Projects Fund (39)

2390 Other Administration Services

Elementary

Secondary

Federal

Total

800 Other Objects

810 Dues and Fees

1,349.41

Total Other Objects

\$1,349.41

Total 2390 Other Administration Services

\$1,349.41

LEA : 113364403 Manheim Central SD

Printed 1/2/2020 2:18:22 PM

Other Capital Projects Fund (39)

2800 Support Services – Central

400 Purchased Property Services

440 Rentals

Elementary

Secondary

Federal

Total

334,235.00

Total Purchased Property Services

\$334,235.00

Total 2800 Support Services – Central

\$334,235.00

LEA : 113364403 Manheim Central SD

Printed 1/2/2020 2:18:22 PM

Other Capital Projects Fund (39)

2820 Information Services

400 Purchased Property Services

440 Rentals

Elementary

Secondary

Federal

Total

334,235.00

Total Purchased Property Services

\$334,235.00

Total 2820 Information Services

\$334,235.00

LEA : 113364403 Manheim Central SD

Printed 1/2/2020 2:18:22 PM

Other Capital Projects Fund (39)

2821 Supervision of Information Services

Elementary

Secondary

Federal

Total

400 Purchased Property Services

440 Rentals

334,235.00

Total Purchased Property Services

\$334,235.00

Total 2821 Supervision of Information Services

\$334,235.00

Other Capital Projects Fund (39)

4000 Facilities Acquisition, Construction and Improvement Services

Total

300 Purchased Professional and Technical Services

330 Other Professional Services

10,023,164.21

Total Purchased Professional and Technical Services

\$10,023,164.21

Total 4000 Facilities Acquisition, Construction and Improvement Services

\$10,023,164.21

Other Capital Projects Fund (39)

4500 Building Acquisition and Construction Services – Original and Additional

Elementary

Secondary

Federal

Total

300 Purchased Professional and Technical Services

330 Other Professional Services

10,023,164.21

Total Purchased Professional and Technical Services

\$10,023,164.21

Total 4500 Building Acquisition and Construction Services – Original and Additional

\$10,023,164.21

	<u>General Fund(10)</u>	<u>Public Purpose Trust(27)</u>	<u>Other Compt Approved (28)</u>	<u>Athletic / Activity(29)</u>	<u>Capital Reserve (690, 1850)(31)</u>
1000 Instruction					
1100 Regular Programs - Elementary / Secondary	21,452,434.99				
1200 Special Programs - Elementary / Secondary	7,423,395.93				
1300 Vocational Education	1,281,791.47				
1400 Other Instructional Programs - Elementary / Secondary	114,380.90				
1500 Nonpublic School Programs	37,503.38				
1800 Pre-Kindergarten	78,857.23				
Total Instruction	\$30,388,363.90				
2000 Support Services					
2100 Support Services - Students	1,700,927.25				
2200 Support Services - Instructional Staff	1,566,188.45				
2300 Support Services - Administration	2,592,332.64				
2400 Support Services - Pupil Health	478,846.87				
2500 Support Services - Business	709,384.08				
2600 Operation and Maintenance of Plant Services	4,152,039.82				
2700 Student Transportation Services	3,123,168.81				
2800 Support Services - Central	2,276,734.83				
2900 Other Support Services	36,223.46				
Total Support Services	\$16,635,846.21				
3000 Operation of Non-Instructional Services					
3200 Student Activities	1,192,454.79				
3300 Community Services	29,850.67				
Total Operation of Non-Instructional Services	\$1,222,305.46				
4000 Facilities Acquisition, Construction and Improvement Services					
4100 Site Acquisition Services - Original and Additional	1,930,663.23				
4500 Building Acquisition and Construction Services - Original and Additional					
Total Facilities Acquisition, Construction and Improvement Services	\$1,930,663.23				
5000 Other Expenditures and Financing Uses					
5100 Debt Service / Other Expenditures and Financing Uses	6,171,924.37				
5200 Interfund Transfers - Out	98,422.07				
Total Other Expenditures and Financing Uses	\$6,270,346.44				
TOTAL ACTUAL EXPENDITURES & OTHER FINANCING USES	\$56,447,525.24				

LEA : 113364403 Manheim Central SD

Printed 1/2/2020 2:18:57 PM

	<u>Capital Reserve (1431)(32)</u>	<u>Other Capital Projects Fund(39)</u>	<u>Debt Service(40)</u>	<u>Permanent(90)</u>	<u>Total</u>
1000 Instruction					
1100 Regular Programs - Elementary / Secondary					21,452,434.99
1200 Special Programs - Elementary / Secondary					7,423,395.93
1300 Vocational Education					1,281,791.47
1400 Other Instructional Programs - Elementary / Secondary					114,380.90
1500 Nonpublic School Programs					37,503.38
1800 Pre-Kindergarten					78,857.23
Total Instruction					\$30,388,363.90
2000 Support Services					
2100 Support Services - Students					1,700,927.25
2200 Support Services - Instructional Staff					1,566,188.45
2300 Support Services - Administration		1,349.41			2,593,682.05
2400 Support Services - Pupil Health					478,846.87
2500 Support Services - Business	98,200.48				807,584.56
2600 Operation and Maintenance of Plant Services	201,116.69				4,353,156.51
2700 Student Transportation Services					3,123,168.81
2800 Support Services - Central	352,395.44	334,235.00			2,963,365.27
2900 Other Support Services					36,223.46
Total Support Services	\$651,712.61	\$335,584.41			\$17,623,143.23
3000 Operation of Non-Instructional Services					
3200 Student Activities					1,192,454.79
3300 Community Services					29,850.67
Total Operation of Non-Instructional Services					\$1,222,305.46
4000 Facilities Acquisition, Construction and Improvement Services					
4100 Site Acquisition Services - Original and Additional					1,930,663.23
4500 Building Acquisition and Construction Services - Original and Additional		10,023,164.21			10,023,164.21
Total Facilities Acquisition, Construction and Improvement Services		\$10,023,164.21			\$11,953,827.44
5000 Other Expenditures and Financing Uses					
5100 Debt Service / Other Expenditures and Financing Uses					6,171,924.37
5200 Interfund Transfers - Out					98,422.07
Total Other Expenditures and Financing Uses					\$6,270,346.44
TOTAL ACTUAL EXPENDITURES & OTHER FINANCING USES	\$651,712.61	\$10,358,748.62			\$67,457,986.47

PSERS Salary Data (Salary Data should relate to the General Fund only)

Amount Description	Amount
Total Salary Base for salaries subject to PSERS withholding	20,703,919.51
Total Federally Funded salaries subject to PSERS withholding	511,256.81
	<hr/>

Title I Expenditure Data

Amount Description	Amount
Expenditures Funded with Current Title I Funds	472,453.00
Expenditures Funded with Carry over Title I Funds	
	<hr/>
Total Title I Expenditure Data	\$472,453.00
	<hr/>

Benefits for Staff Relative to Collective Bargaining Agreements

	OBJECT	COVERED	NOT COVERED	TOTAL
10 General Fund				
	211 Medical Insurance			
	212 Dental Insurance			
	215 Eye Care Insurance	1,300.80		1,300.80
	216 Prescription Insurance			
	271 Self-Insurance Medical Benefits	2,654,140.20	1,353,006.32	4,007,146.52
	272 Self-Insurance Dental Benefits	115,803.08	59,033.16	174,836.24
	275 Self-Insurance Eye Care Benefits			
	276 Self-Insurance Prescription Benefits			
	FUND TOTAL	\$2,771,244.08	\$1,412,039.48	\$4,183,283.56
50 Enterprise Fund				
	211 Medical Insurance			
	212 Dental Insurance			
	215 Eye Care Insurance			
	216 Prescription Insurance			
	271 Self-Insurance Medical Benefits		59,001.88	59,001.88
	272 Self-Insurance Dental Benefits		2,198.12	2,198.12
	275 Self-Insurance Eye Care Benefits			
	276 Self-Insurance Prescription Benefits			
	FUND TOTAL		\$61,200.00	\$61,200.00
60 Internal Service Fund	No Self Insurance data to report			
	211 Medical Insurance			
	212 Dental Insurance			
	215 Eye Care Insurance			
	216 Prescription Insurance			
	271 Self-Insurance Medical Benefits			
	272 Self-Insurance Dental Benefits			
	275 Self-Insurance Eye Care Benefits			
	276 Self-Insurance Prescription Benefits			
		FUND TOTAL		
Total of All Funds		\$2,771,244.08	\$1,473,239.48	\$4,244,483.56

LEA : 113364403 Manheim Central SD

Printed 1/2/2020 2:19:20 PM

Function	Special Education (Prior Year)	Nonspecial Education (Prior Year)	Total (Prior Year)	Special Education (Current Year)	Nonspecial Education (Current Year)	Total (Current Year)
2120 Guidance Services	134,041.10	791,657.10	925,698.20	146,540.75	832,355.36	978,896.11
2140 Psychological Services	280,402.85	70,100.71	350,503.56	293,839.99	73,460.00	367,299.99
2150 Speech Pathology and Audiology Services						
2160 Social Work Services	12,495.29	73,798.12	86,293.41	13,257.24	75,301.51	88,558.75
2260 Instruction and Curriculum Development Services	310,920.63	77,730.16	388,650.79	396,978.78	99,244.70	496,223.48
2350 Legal and Accounting Services	1,085.00	108,003.20	109,088.20	1,170.00	105,277.95	106,447.95
2420 Medical Services						
2440 Nursing Services	69,680.52	411,538.54	481,219.06	71,657.18	407,014.69	478,671.87
2700 Student Transportation Services	564,207.41	2,318,533.47	2,882,740.88	739,566.10	2,383,602.71	3,123,168.81
Total	\$1,372,832.80	\$3,851,361.30	\$5,224,194.10	\$1,663,010.04	\$3,976,256.92	\$5,639,266.96

(PRINCIPAL AMOUNTS ONLY)

GOVERNMENTAL FUNDS/ ACTIVITIES

	Short-Term Borrowing	General Obligation Bonds/Notes	Authority Building Obligations	Other Long-Term Debt	Other Post-Employment Benefits (OPEB)	Compensated Absences	Net Pension Liability	Total
1. Debt at Beginning of Fiscal Year		71,620,000.00		2,429,552.00	5,238,491.00	465,659.00	73,638,962.00	153,392,664.00
2. Additional Debt Incurred During Year				334,235.00	50,173.00	15,474.00		399,882.00
3. Retirements and Repayments		3,335,000.00		575,488.00	300,393.00		2,539,468.00	6,750,349.00
4. Debt at End of Fiscal Year		68,285,000.00		2,188,299.00	4,988,271.00	481,133.00	71,099,494.00	147,042,197.00
5. Accreted Interest at End Of Fiscal Year								
6. Total Debt and Accreted Interest		68,285,000.00		2,188,299.00	4,988,271.00	481,133.00	71,099,494.00	147,042,197.00
7. Current Portion P&I - Due within 1 year		6,180,908.76		572,974.00				6,753,882.76
8. Interest Paid during current fiscal year		2,836,924.36		29,699.51				2,866,623.87

(PRINCIPAL AMOUNTS ONLY)

PROPRIETARY FUNDS

	Short-Term Borrowing	General Obligation Bonds/Notes	Authority Building Obligations	Other Long-Term Debt	Other Post-Employment Benefits (OPEB)	Compensated Absences	Net Pension Liability	Total
1. Debt at Beginning of Fiscal Year					81,461.00		1,974,686.00	2,056,147.00
2. Additional Debt Incurred During Year					8,012.00		85,387.00	93,399.00
3. Retirements and Repayments								
4. Debt at End of Fiscal Year					89,473.00		2,060,073.00	2,149,546.00
5. Accreted Interest at End Of Fiscal Year								
6. Total Debt and Accreted Interest					89,473.00		2,060,073.00	2,149,546.00
7. Current Portion P&I - Due within 1 year								
8. Interest Paid during current fiscal year								

Total Principal and Interest Payments Made by Your School - All Funds

Function	Fund		Principal (910)	Principal (920)	Interest (830)	Total (Principal +Interest)	Misc Other Uses (990)
5110	10	General Fund	3,335,000.00		2,836,924.37	6,171,924.37	
5110	20	Special Revenue Funds					
5110	30	Capital Projects Funds					
5110	40	Debt Service Fund					
5110	90	Permanent Fund					
5120	10	General Fund					
5120	20	Special Revenue Funds					
5120	30	Capital Projects Funds					
5120	40	Debt Service Fund					

Total Debt Payments - Governmental Funds			\$3,335,000.00		\$2,836,924.37	\$6,171,924.37	
---	--	--	-----------------------	--	-----------------------	-----------------------	--

Function	Fund		Principal (910)	Principal (920)	Interest (830)	Total (Principal +Interest)
5110	50	Enterprise Fund				
5110	60	Internal Service Fund				
5120	50	Enterprise Fund				
5120	60	Internal Service Fund				

Total Debt Payments - Proprietary Funds						
--	--	--	--	--	--	--

Debt Details
Governmental Funds/ Activities

Debt Category	Debt Issue Date (MM/YYYY)	Principal Amounts Only			Debt at End of Fiscal Year	Current Portion Due Within One Year (Principal and Interest)	Interest Paid During Fiscal Year
		Debt at Beginning of Fiscal Year	Additions	Reductions / Repayments			
General Obligation Bonds/Notes – CIB	05/2018	9,500,000.00		5,000.00	9,495,000.00	349,530.00	337,916.60
General Obligation Bonds/Notes – CIB	06/2017	9,445,000.00		5,000.00	9,440,000.00	381,772.50	376,826.50
General Obligation Bonds/Notes – CIB	09/2016	11,855,000.00		5,000.00	11,850,000.00	502,537.50	497,580.00
General Obligation Bonds/Notes – CIB	09/2016	22,050,000.00		3,310,000.00	18,740,000.00	4,278,000.00	965,400.00
General Obligation Bonds/Notes – CIB	11/2015	9,800,000.00		5,000.00	9,795,000.00	320,281.26	315,351.26
General Obligation Bonds/Notes – CIB	11/2014	8,970,000.00		5,000.00	8,965,000.00	348,787.50	343,850.00
Extended Term Financing Agreements		903,674.00	334,235.00	494,244.00	743,665.00	491,506.00	1.00
Other Long Term Debt/Liabilities		1,525,878.00		81,244.00	1,444,634.00	81,468.00	29,698.51
Compensated Absences		465,659.00	15,474.00		481,133.00		
Other Post-Employment Benefits (OPEB)		5,238,491.00	50,173.00	300,393.00	4,988,271.00		
Net Pension Liability		73,638,962.00		2,539,468.00	71,099,494.00		
Totals for Debt Entered:		\$153,392,664.00	\$399,882.00	\$6,750,349.00	\$147,042,197.00	\$6,753,882.76	\$2,866,623.87

Bond Details
Proprietary Funds

Debt Category	Debt Issue Date (MM/YYYY)	Principal Amounts Only			Debt at End of Fiscal Year	Current Portion Due Within One Year (Principal and Interest)	Interest Paid During Fiscal Year
		Debt at Beginning of Fiscal Year	Additions	Reductions / Repayments			
Other Post-Employment Benefits (OPEB)		81,461.00	8,012.00		89,473.00		
Net Pension Liability		1,974,686.00	85,387.00		2,060,073.00		
Totals for Debt Entered:		\$2,056,147.00	\$93,399.00		\$2,149,546.00		

General Fund (10)

Section 1: Tuition/Purchased Services as Reported within Expenditure Detail

	Amount
Tuition Reported in General Fund Expenditures 1000-560	1,924,994.30
Purchased Services in General Fund Expenditures 1000-594 and 1000-597	161,771.37
Section 1 Total	\$2,086,765.67

Section 2: Tuition Paid to Institution Types During Fiscal Year

	Tuition Paid For Nonspecial Education	Tuition Paid For Special Education	Total
1 1306 Institutions			
2 Institutionalized Children's Programs			
3 Juveniles Incarcerated in Adult Facilities			
4 Residential Treatment Facilities			
5 Other Local Education Agencies	20,892.05	208,193.77	229,085.82
6 Brick and Mortar Charter Schools			
7 Cyber Charter Schools	563,229.58	86,987.89	650,217.47
8 Career and Technology Centers	866,637.76		866,637.76
9 Approved Private Schools		151,461.00	151,461.00
10 PA Chartered Schools for the Deaf and Blind			
11 Private Residential Rehabilitative Institutions	94,199.30	95,164.32	189,363.62
12 Juvenile Detention Centers			
13 Special Program Jointures			
14 Other Tuition Not Included Elsewhere In This Section			
Section 2 Total	\$1,544,958.69	\$541,806.98	\$2,086,765.67

1 .	<u>Student Transportation Services for Educational Field Trips</u>	9,120.00
2 .	<u>Student Transportation Services for Student Activities</u>	8,040.00
3 .	<u>Rental of Vehicles for Student Transportation Services</u>	
4 .	<u>Capital Reserve Funds</u>	

Include only district-owned transportation expenditures paid from State or local money.
 DO NOT include federal expenditures or payments to contract service providers.
 Contracted transportation services should not be recorded on this schedule.

Food Service / Cafeteria Operations Fund (51)

3000 Operation of Non-Instructional Services

Total

100 Personnel Services – Salaries

100 Personnel Services – Salaries 610,307.66

Total Personnel Services – Salaries \$610,307.66

200 Personnel Services – Employee Benefits

220 Social Security Contributions 48,903.37

230 PSERS Retirement Contributions 375,559.60

270 Group Insurance – Self-Insurance 61,200.00

Total Personnel Services – Employee Benefits \$485,662.97

300 Purchased Professional and Technical Services

329 Professional Educational Services – Other 409.80

Total Purchased Professional and Technical Services \$409.80

400 Purchased Property Services

430 Repairs and Maintenance Services 36,615.74

Total Purchased Property Services \$36,615.74

500 Other Purchased Services

530 Communications 197.90

580 Travel 3,316.60

Total Other Purchased Services \$3,514.50

600 Supplies

610 General Supplies 75,008.46

620 Energy 535.71

630 Food 717,289.24

640 Books and Periodicals 11,630.00

Total Supplies \$804,463.41

700 Property

740 Depreciation 21,777.37

Total Property \$21,777.37

800 Other Objects

810 Dues and Fees 350.00

Total Other Objects \$350.00

Total 3000 Operation of Non-Instructional Services \$1,963,101.45

Food Service / Cafeteria Operations Fund (51)

	<u>Elementary</u>	<u>Secondary</u>	<u>Federal</u>	<u>Total</u>
3100 Food Services				
100 Personnel Services – Salaries				
100 Personnel Services – Salaries				610,307.66
Total Personnel Services – Salaries				\$610,307.66
200 Personnel Services – Employee Benefits				
220 Social Security Contributions				48,903.37
230 PSERS Retirement Contributions				375,559.60
270 Group Insurance – Self-Insurance				61,200.00
Total Personnel Services – Employee Benefits				\$485,662.97
300 Purchased Professional and Technical Services				
329 Professional Educational Services – Other				409.80
Total Purchased Professional and Technical Services				\$409.80
400 Purchased Property Services				
430 Repairs and Maintenance Services				36,615.74
Total Purchased Property Services				\$36,615.74
500 Other Purchased Services				
530 Communications				197.90
580 Travel				3,316.60
Total Other Purchased Services				\$3,514.50
600 Supplies				
610 General Supplies				75,008.46
620 Energy				535.71
630 Food				717,289.24
640 Books and Periodicals				11,630.00
Total Supplies				\$804,463.41
700 Property				
740 Depreciation				21,777.37
Total Property				\$21,777.37
800 Other Objects				
810 Dues and Fees				350.00
Total Other Objects				\$350.00
Total 3100 Food Services				\$1,963,101.45

Internal Service Fund (60)

1000 Instruction	<u>Total</u>
200 Personnel Services – Employee Benefits	
270 Group Insurance – Self-Insurance	4,181,983.00
Total Personnel Services – Employee Benefits	\$4,181,983.00
Total 1000 Instruction	\$4,181,983.00

Internal Service Fund (60)

1100 Regular Programs – Elementary / Secondary

Elementary

Secondary

Federal

Total

200 Personnel Services – Employee Benefits

270 Group Insurance – Self-Insurance

4,181,983.00

Total Personnel Services – Employee Benefits

\$4,181,983.00

Total 1100 Regular Programs – Elementary / Secondary

\$4,181,983.00

Internal Service Fund (60)

1110 Regular Programs

Elementary

Secondary

Federal

Total

200 Personnel Services – Employee Benefits

270 Group Insurance – Self-Insurance

4,181,983.00

Total Personnel Services – Employee Benefits

\$4,181,983.00

Total 1110 Regular Programs

\$4,181,983.00

	<u>Food Service(51)</u>	<u>Child Care Operations(52)</u>	<u>Other Enterprise(58)</u>	<u>Internal Service(60)</u>	<u>Total</u>
1000 Instruction					
1100 Regular Programs - Elementary / Secondary				4,181,983.00	4,181,983.00
Total Instruction				\$4,181,983.00	\$4,181,983.00
3000 Operation of Non-Instructional Services					
3100 Food Services	1,963,101.45				1,963,101.45
Total Operation of Non-Instructional Services	\$1,963,101.45				\$1,963,101.45
TOTAL ACTUAL EXPENDITURES & OTHER FINANCING USES	\$1,963,101.45			\$4,181,983.00	\$6,145,084.45

LEA : 113364403 Manheim Central SD

Printed 1/2/2020 2:20:06 PM

Fund	School	School Number	Local Personnel	Local Nonpersonnel	State Personnel	State Nonpersonnel	Federal Personnel	Federal Nonpersonnel	Total	Explanation
10	Burgard El Sch	7954	3,111,445.48	754,221.51	1,315,756.40	318,942.36	207,081.35	4,774.17	5,712,221.27	
	Doe Run El Sch	8422	5,261,878.29	1,390,699.68	2,225,123.36	588,093.87	165,279.11	8,171.52	9,639,245.83	
	Manheim Central MS	7953	7,258,489.72	1,850,880.64	3,069,442.92	782,693.47	168,529.19	10,759.70	13,140,795.64	
	Manheim Central SHS	2618	7,938,737.21	2,121,819.94	3,357,103.44	897,267.26		10,706.25	14,325,634.10	
Total			23,570,550.70	6,117,621.77	9,967,426.12	2,586,996.96	540,889.65	34,411.64	42,817,896.84	