

LEA Name : Manheim Central SD  
Address : 281 White Oak Rd  
Manheim , PA 17545

County : Lancaster  
AUN Number : 113364403  
LEA Type : SD

## Annual Financial Report Accuracy Certification Statement

For Fiscal Year Ending

**6/30/2020**

Pennsylvania Department of Education

&

Office of Comptroller Operations

PDE-2056: Intermediate Unit

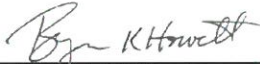
PDE-2057: School District, AVTS/CTC, Charter School,  
and Special Program Jointure

**CERTIFICATION: By signing this page I agree that the electronic data submitted is a complete and accurate statement of the financial operations and status of the local education agency for the fiscal year. It has been prepared in accordance with generally accepted accounting principles and established Commonwealth of PA reporting guidelines.**



Chief School Administrator Signature

21 DEC 2020  
Date



Board Secretary Signature

12/21/2020  
Date

Bryan Howett

Contact Person

howettb@manheimcentral.org

Contact Person E-mail Address

(717)664-8522

Ext :

Contact Person Telephone Number

(717)664-8528

Contact Person Fax Number

**Audit Certification**  
**Annual Financial Report:**  
For Fiscal Year Ending **6/30/2020**  
**(Pursuant to PA School Code Section 218(b))**

LEA Name : Manheim Central SD  
AUN Number : 113364403  
County : Lancaster

<b>Audit Certification Due:</b> 12/31/2020
---

**This certification is applicable to the Annual Financial Report data submitted through the Consolidated Financial Reporting System (CFRS).**

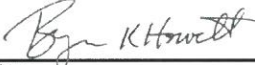
CERTIFICATION: By signing this page I agree that the financial statements of the school have been properly audited as noted above pursuant to Article XXIV, and in the auditor's professional opinion, the Annual Financial Report (PDE-2057) submitted through CFRS is materially consistent with the audited financial statements.

**Chief School Administrator**

**Board Secretary**

  
\_\_\_\_\_  
Signature

21 DEC 2020  
\_\_\_\_\_  
Date

  
\_\_\_\_\_  
Signature

12/21/2020  
\_\_\_\_\_  
Date

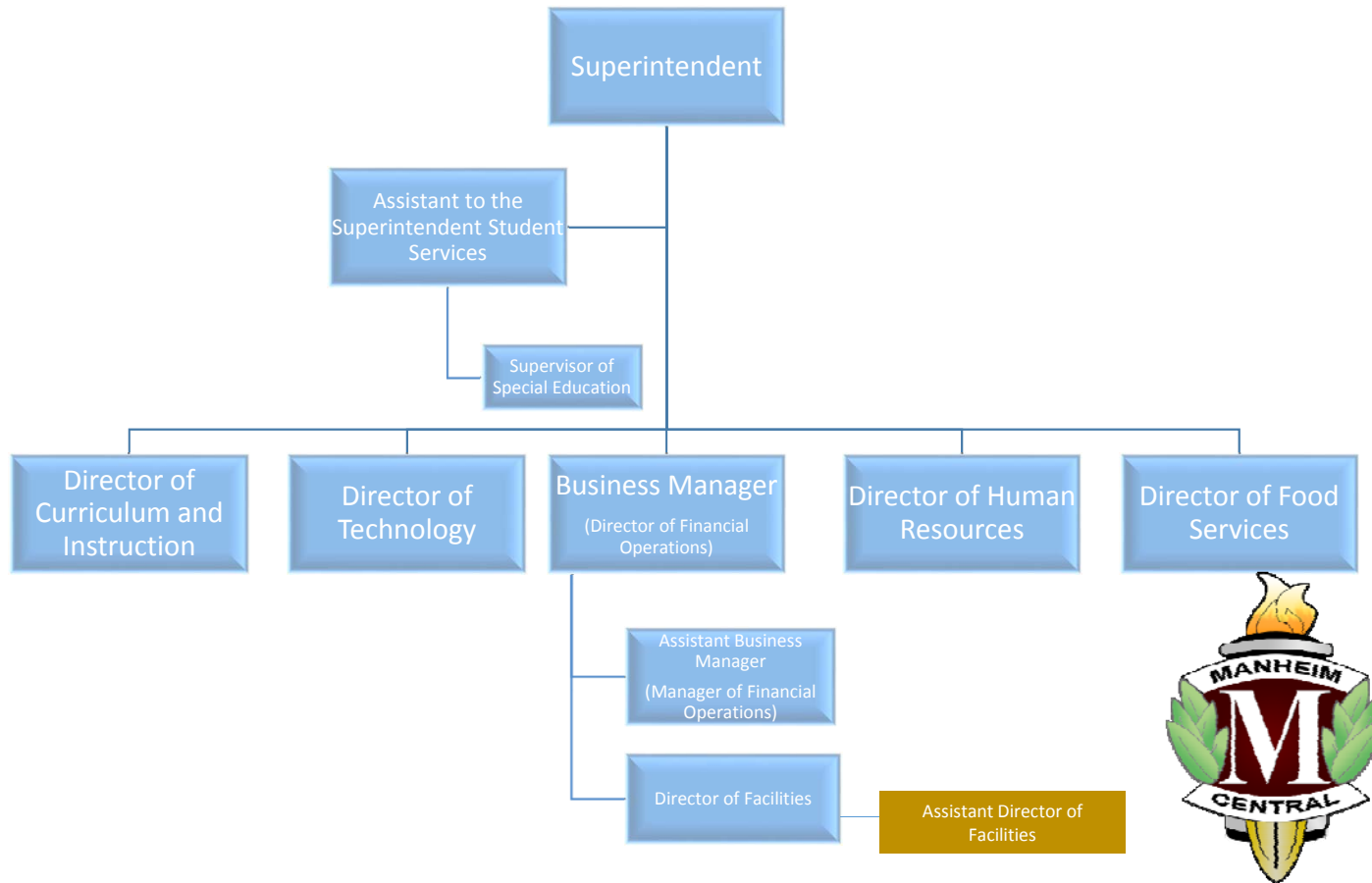
Bryan Howett  
\_\_\_\_\_  
Contact Person

howettb@manheimcentral.org  
\_\_\_\_\_  
Contact Person E-mail Address

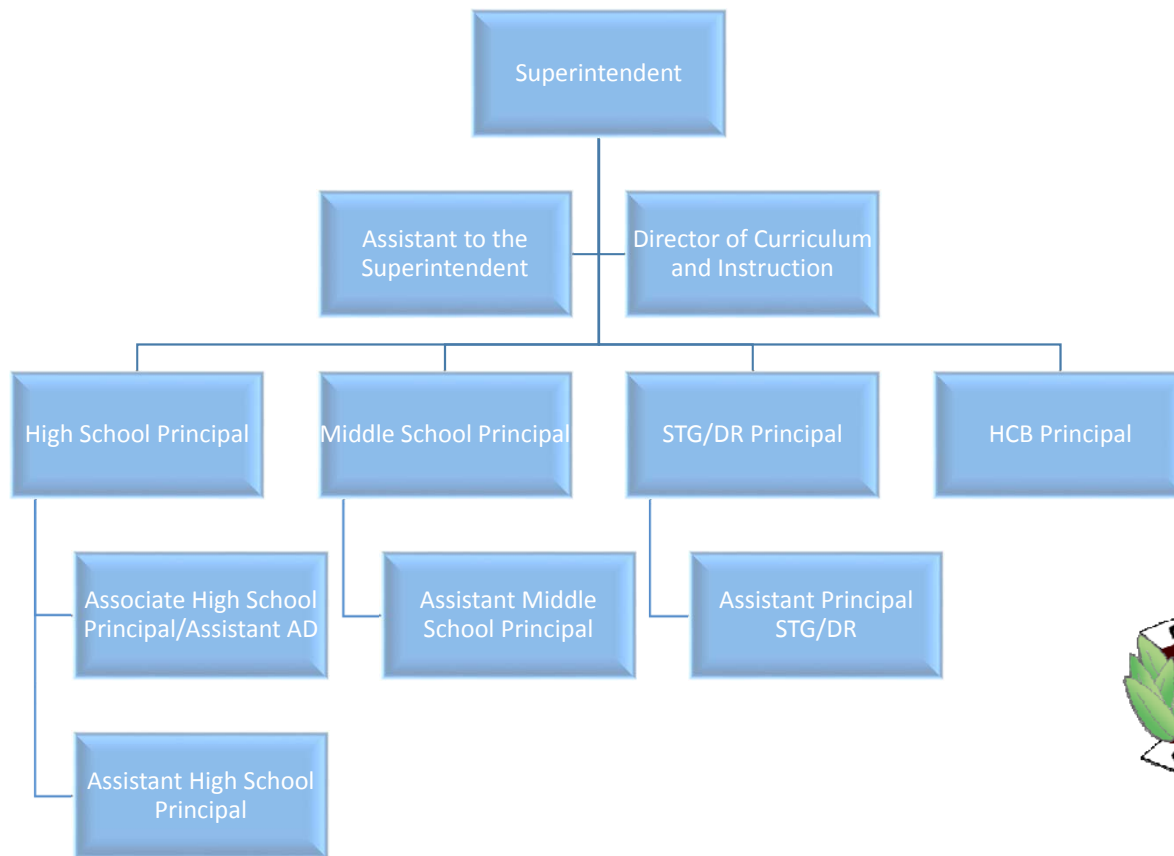
(717)664-8522      Ext :  
\_\_\_\_\_  
Contact Person Telephone Number

(717)664-8528  
\_\_\_\_\_  
Contact Person Fax Number

# Manheim Central School District Operations Administration Organizational Chart



# Manheim Central School District Building Administration Organizational Chart





Book	Policy Manual
Section	600 Finances
Title	GASB Statement 34
Code	622
Status	Active
Legal	24 P.S. 218 24 P.S. 613 Governmental Accounting Standards Board, Statement No. 34
Adopted	December 19, 2016

### **Purpose**

The Board recognizes the need to implement the required accounting and financial reporting standards stipulated by the Pennsylvania Department of Education.

The primary objectives of implementing the Governmental Accounting Standards Board (GASB) Statement 34 are to assure compliance with state requirements, and properly account for both the financial and economic resources of the district.

### **Delegation of Responsibility**

The responsibility to coordinate the compilation and preparation of all information necessary to implement this policy is delegated to the Business Manager.

The designated individual shall be responsible for implementing the necessary procedures to establish and maintain a fixed asset inventory, including depreciation schedules. Depreciation shall be computed on a straight-line basis over the useful lives of the assets, using an averaging convention. Normal maintenance and repairs shall be charged to expense as incurred; major renewals and betterments that materially extend the life or increase the value of the asset shall be capitalized. A schedule of accumulated depreciation shall be consistent from year to year. The basis for depreciation, including groups of assets and useful lives, shall be in writing and submitted for review to the Board.

The Business Manager shall prepare the required Management Discussion and Analysis (MD&A). The MD&A shall be in the form required by GASB Statement 34 and shall be submitted to the Board for approval, prior to publication.

Prior to submission of the MD&A for Board approval, the district's independent auditors shall review the MD&A, in accordance with SAS No. 52, "Required Supplementary Information".

### **Guidelines**

A **capitalized asset** shall be any asset acquired by donation or purchase that has a useful life of longer than one (1) year or extends the life of another capitalized asset or increases its value and meets a specific dollar threshold.

In order to associate debt with acquired assets and to avoid net asset deficits, any asset that has been acquired with debt proceeds shall be capitalized, regardless of the cost of the asset. The asset life of these assets shall be considered relative to the time of the respective debt amortizations.

All capitalized assets shall be recorded at historical cost at acquisition date or estimated cost if acquired prior to the date of the inventory done in April 2001. Any donated capital asset shall be recorded at the date of donation using the fair market value of the item at that date.

A dollar threshold for each asset shall be set at an appropriate level. Management should periodically review these levels with assistance from the local independent auditor and make any modifications necessary.

Assets that fall below the capitalization threshold for GASB 34 reporting purposes may still be significant for insurance, warranty service, and obsolescence/replacement policy tracking purposes. The district may record and maintain these non-GASB 34 asset inventories in subsidiary ledgers.



<u>Val Number</u>	<u>Description</u>	<u>Justification</u>
30145	Revenue Detail – Fund 32: Revenue has been entered in account 6991 – Refunds of Prior Year Expenditures. Please include a description of the refund of prior year expenditure in your justification.  Revenue Detail 6991, Fund 32: \$62,767.92	Mold Insurance Refund from 18-19 fiscal year, received in 19-20.
30430	Revenue Detail: AFR amount must equal or exceed PDE FAI System amount.  7220, AFR Rev Detail: \$30,632.38 7220, PDE FAI System: \$35,660.51	Revenue received August 2019 was recorded as 18-19 revenue.
50450	SESS - 2350 Legal and Accounting Services: SESS Schedule amounts for Special Education vary from prior year by 40% or more. Correct the data or enter a justification.  SESS Schedule 2350: \$46,837.86 Prior Year SESS Schedule 2350: \$1,170.00	Special Education Legal expenses were recorded in the 1200 function for 18-19.

Amounts Expressed in Whole Dollars	<u>General Fund</u> <u>(10)</u>	<u>Student Sponsored</u> <u>Activity Fund</u> <u>(21)</u>	<u>Public Purpose Trust</u> <u>(27)</u>	<u>Other Compt Approved</u> <u>(28)</u>	<u>Athletic / Activity</u> <u>(29)</u>
<b>Assets And Deferred Outflows Of Resources</b>					
<b>Assets</b>					
0100 Cash and Cash Equivalents	8,876,565				
0110 Investments	14,200,000				
0120 Taxes Receivable	1,797,572				
0130 Due From Other Funds	605,002				
0141 Due From Other Governments	1,686,663				
0142 State Revenue Receivable					
0143 Federal Revenue Receivable					
0145 Other Intergovernmental Revenue Receivable					
0146 Due from Primary Government					
0147 Due from Component Unit					
0150 Other Receivables	622,201				
0170 Inventories	64,566				
0180 Prepaid Expenses (Expenditures)	133,339				
0190 Other Current Assets					
<b>Total Assets</b>	<b>\$27,985,908</b>				
0910 Deferred Outflows of Resources					
<b>Total Assets And Deferred Outflows Of Resources</b>	<b>\$27,985,908</b>				

Amounts Expressed in Whole Dollars

Capital Reserve (690.1850)    Capital Reserve (1431)(32)    Other Capital Projects Fund (39)    Debt Service (40)    Permanent (90)

**Assets And Deferred Outflows Of Resources**

**Assets**

0100 Cash and Cash Equivalents		2,544,604	1,257,551		
0110 Investments					
0120 Taxes Receivable					
0130 Due From Other Funds					
0141 Due From Other Governments					
0142 State Revenue Receivable					
0143 Federal Revenue Receivable					
0145 Other Intergovernmental Revenue Receivable					
0146 Due from Primary Government					
0147 Due from Component Unit					
0150 Other Receivables					
0170 Inventories					
0180 Prepaid Expenses (Expenditures)					
0190 Other Current Assets					
<b>Total Assets</b>		<b>\$2,544,604</b>	<b>\$1,257,551</b>		
0910 Deferred Outflows of Resources					
<b>Total Assets And Deferred Outflows Of Resources</b>		<b>\$2,544,604</b>	<b>\$1,257,551</b>		

Amounts Expressed in Whole Dollars

**Total Governmental Funds**

**Assets And Deferred Outflows Of Resources**

<b>Assets</b>	
0100 Cash and Cash Equivalents	12,678,720
0110 Investments	14,200,000
0120 Taxes Receivable	1,797,572
0130 Due From Other Funds	605,002
0141 Due From Other Governments	1,686,663
0142 State Revenue Receivable	
0143 Federal Revenue Receivable	
0145 Other Intergovernmental Revenue Receivable	
0146 Due from Primary Government	
0147 Due from Component Unit	
0150 Other Receivables	622,201
0170 Inventories	64,566
0180 Prepaid Expenses (Expenditures)	133,339
0190 Other Current Assets	
<b>Total Assets</b>	<b>\$31,788,063</b>
0910 Deferred Outflows of Resources	
<b>Total Assets And Deferred Outflows Of Resources</b>	<b>\$31,788,063</b>

Amounts Expressed in Whole Dollars

	<u>General Fund</u> <u>(10)</u>	<u>Student Sponsored</u> <u>Activity Fund</u> <u>(21)</u>	<u>Public Purpose Trust</u> <u>(27)</u>	<u>Other Compt Approved</u> <u>(28)</u>	<u>Athletic / Activity</u> <u>(29)</u>
<b>Liabilities And Deferred Inflows Of Resources And Fund Balances</b>					
<b>Liabilities</b>					
0400 Due to Other Funds	175,493				
0411 Due to Other Governments					
0412 Due to Primary Government					
0413 Due to Component Unit					
0420 Accounts Payable	426,945				
0430 Contracts Payable					
0440 Current Portion of Long-Term Debt					
0450 Short-Term Payables					
0461 Accrued Salaries and Benefits	5,482,354				
0462 Payroll Deductions and Withholding					
0480 Unearned Revenues					
0490 Other Current Liabilities	107,533				
<b>Total Liabilities</b>	<b>\$6,192,325</b>				
0950 Deferred Inflows of Resources	805,610				
<b>Fund Balances</b>					
0810 Nonspendable Fund Balance	197,905				
0820 Restricted Fund Balance					
0830 Committed Fund Balance	16,300,000				
0840 Assigned Fund Balance					
0850 Unassigned Fund Balance	4,490,068				
<b>Total Fund Balances</b>	<b>\$20,987,973</b>				
<b>Total Liabilities, Deferred Inflows Of Resources And Fund Balances</b>	<b>\$27,985,908</b>				

Amounts Expressed in Whole Dollars

<u>Capital Reserve (690.</u>	<u>Capital Reserve (1431)</u>	<u>Other Capital Projects</u>	<u>Debt Service</u>	<u>Permanent</u>
<u>1850)</u>	<u>(32)</u>	<u>Fund</u>	<u>(40)</u>	<u>(90)</u>
<u>(31)</u>		<u>(39)</u>		

**Liabilities And Deferred Inflows Of Resources And Fund Balances**

**Liabilities**

0400 Due to Other Funds					6,546
0411 Due to Other Governments					
0412 Due to Primary Government					
0413 Due to Component Unit					
0420 Accounts Payable					6,105
0430 Contracts Payable					
0440 Current Portion of Long-Term Debt					
0450 Short-Term Payables					
0461 Accrued Salaries and Benefits					
0462 Payroll Deductions and Withholding					
0480 Unearned Revenues					
0490 Other Current Liabilities					

<b>Total Liabilities</b>					<b>\$12,651</b>
--------------------------	--	--	--	--	-----------------

0950 Deferred Inflows of Resources

**Fund Balances**

0810 Nonspendable Fund Balance					
0820 Restricted Fund Balance		2,544,604		1,244,900	
0830 Committed Fund Balance					
0840 Assigned Fund Balance					
0850 Unassigned Fund Balance					

<b>Total Fund Balances</b>					<b>\$2,544,604</b>
----------------------------	--	--	--	--	--------------------

<b>Total Liabilities, Deferred Inflows Of Resources And Fund Balances</b>					<b>\$1,257,551</b>
---	--	--	--	--	--------------------

Amounts Expressed in Whole Dollars

**Total Governmental Funds**

**Liabilities And Deferred Inflows Of Resources And Fund Balances**

**Liabilities**

0400 Due to Other Funds	182,039
0411 Due to Other Governments	
0412 Due to Primary Government	
0413 Due to Component Unit	
0420 Accounts Payable	433,050
0430 Contracts Payable	
0440 Current Portion of Long-Term Debt	
0450 Short-Term Payables	
0461 Accrued Salaries and Benefits	5,482,354
0462 Payroll Deductions and Withholding	
0480 Unearned Revenues	
0490 Other Current Liabilities	107,533

**Total Liabilities \$6,204,976**

0950 Deferred Inflows of Resources	805,610
------------------------------------	---------

**Fund Balances**

0810 Nonspendable Fund Balance	197,905
0820 Restricted Fund Balance	3,789,504
0830 Committed Fund Balance	16,300,000
0840 Assigned Fund Balance	
0850 Unassigned Fund Balance	4,490,068

**Total Fund Balances \$24,777,477**

**Total Liabilities, Deferred Inflows Of Resources And Fund Balances \$31,788,063**

Amounts Expressed in Whole Dollars	<u>General Fund</u> <u>(10)</u>	<u>Student Sponsored</u> <u>Activity Fund</u> <u>(21)</u>	<u>Public Purpose Trust</u> <u>(27)</u>	<u>Other Compt Approved</u> <u>(28)</u>	<u>Athletic / Activity</u> <u>(29)</u>
<b>Revenues</b>					
6000 Revenue from Local Sources	39,414,255				
7000 Revenue from State Sources	16,793,485				
8000 Revenue from Federal Sources	811,685				
<b>Total Revenues</b>	<b>\$57,019,425</b>				
<b>Expenditures</b>					
1000 Instruction	32,021,954				
2000 Support Services	15,550,393				
3000 Operation of Non-Instructional Services	1,201,358				
4000 Facilities Acquisition, Construction and Improvement Services					
5110 Debt Service	6,021,164				
5130 Refund of Prior Year Revenues / Receipts	6,325				
<b>Total Expenditures</b>	<b>\$54,801,194</b>				
<b>Excess (Deficiency) Of Revenues Over Expenditures</b>	<b>\$2,218,231</b>				
<b>Other Financing Sources (Uses)</b>					
9110 Face Value of Bonds Issued					
9120 Proceeds from Refunding of Bonds	35,147				
9130 Bond Premiums					
9200 Proceeds from Extended-Term Financing					
9300 Interfund Transfers - IN					
9400 Sale of or Compensation for Loss of Fixed Assets	2,135,500				
9710 Transfers from Component Units					
9720 Transfers from Primary Governments					
9910 Other Financing Sources Not Listed in the 9000 Series					
9990 Insurance Recoveries					
5120 Debt Service – Refunded Bonds					
5150 Bond Discounts					
5200 Interfund Transfers – Out	2,134,272				
5300 Transfers Out to Component Units/Primary Governments					
<b>Total Other Financing Sources (Uses)</b>	<b>\$36,375</b>				

Amounts Expressed in Whole Dollars	<u>Capital Reserve (690, 1850) (31)</u>	<u>Capital Reserve (1431) (32)</u>	<u>Other Capital Projects Fund (39)</u>	<u>Debt Service (40)</u>	<u>Permanent (90)</u>
<b>Revenues</b>					
6000 Revenue from Local Sources		75,884	35,439		
7000 Revenue from State Sources					
8000 Revenue from Federal Sources					
<b>Total Revenues</b>		<b>\$75,884</b>	<b>\$35,439</b>		
<b>Expenditures</b>					
1000 Instruction					
2000 Support Services		817,632	597,036		
3000 Operation of Non-Instructional Services					
4000 Facilities Acquisition, Construction and Improvement Services			2,172,260		
5110 Debt Service					
5130 Refund of Prior Year Revenues / Receipts					
<b>Total Expenditures</b>		<b>\$817,632</b>	<b>\$2,769,296</b>		
<b>Excess (Deficiency) Of Revenues Over Expenditures</b>		<b>(\$741,748)</b>	<b>(\$2,733,857)</b>		
<b>Other Financing Sources (Uses)</b>					
9110 Face Value of Bonds Issued					
9120 Proceeds from Refunding of Bonds			8,885,000		
9130 Bond Premiums			418,938		
9200 Proceeds from Extended-Term Financing			429,992		
9300 Interfund Transfers - IN		2,134,272			
9400 Sale of or Compensation for Loss of Fixed Assets					
9710 Transfers from Component Units					
9720 Transfers from Primary Governments					
9910 Other Financing Sources Not Listed in the 9000 Series					
9990 Insurance Recoveries					
5120 Debt Service – Refunded Bonds			9,136,894		
5150 Bond Discounts					
5200 Interfund Transfers – Out					
5300 Transfers Out to Component Units/Primary Governments					
<b>Total Other Financing Sources (Uses)</b>		<b>\$2,134,272</b>	<b>\$597,036</b>		

Amounts Expressed in Whole Dollars	<u>Total Governmental Funds</u>
<b>Revenues</b>	
6000 Revenue from Local Sources	39,525,578
7000 Revenue from State Sources	16,793,485
8000 Revenue from Federal Sources	811,685
<b>Total Revenues</b>	<b>\$57,130,748</b>
<b>Expenditures</b>	
1000 Instruction	32,021,954
2000 Support Services	16,965,061
3000 Operation of Non-Instructional Services	1,201,358
4000 Facilities Acquisition, Construction and Improvement Services	2,172,260
5110 Debt Service	6,021,164
5130 Refund of Prior Year Revenues / Receipts	6,325
<b>Total Expenditures</b>	<b>\$58,388,122</b>
<b>Excess (Deficiency) Of Revenues Over Expenditures</b>	<b>(\$1,257,374)</b>
<b>Other Financing Sources (Uses)</b>	
9110 Face Value of Bonds Issued	
9120 Proceeds from Refunding of Bonds	8,920,147
9130 Bond Premiums	418,938
9200 Proceeds from Extended-Term Financing	429,992
9300 Interfund Transfers - IN	2,134,272
9400 Sale of or Compensation for Loss of Fixed Assets	2,135,500
9710 Transfers from Component Units	
9720 Transfers from Primary Governments	
9910 Other Financing Sources Not Listed in the 9000 Series	
9990 Insurance Recoveries	
5120 Debt Service – Refunded Bonds	9,136,894
5150 Bond Discounts	
5200 Interfund Transfers – Out	2,134,272
5300 Transfers Out to Component Units/Primary Governments	
<b>Total Other Financing Sources (Uses)</b>	<b>\$2,767,683</b>

Amounts Expressed in Whole Dollars	<u>General Fund</u> <u>(10)</u>	<u>Student Sponsored</u> <u>Activity Fund</u> <u>(21)</u>	<u>Public Purpose Trust</u> <u>(27)</u>	<u>Other Compt Approved</u> <u>(28)</u>	<u>Athletic / Activity</u> <u>(29)</u>
<b>Special And Extraordinary Items</b>					
9920 Special Items – Gains					
9930 Extraordinary Items – Gains					
5520 Special Items – Losses					
5530 Extraordinary Items – Losses					
<b>Net Change In Fund Balances</b>	<b>\$2,254,606</b>				
<b>Fund Balance</b>					
0001 Fund Balance - Beginning of Fiscal Year	18,733,367				
<b>Fund Balance - End Of Year</b>	<b>\$20,987,973</b>				

Amounts Expressed in Whole Dollars	<u>Capital Reserve (690.</u> <u>1850)</u> <u>(31)</u>	<u>Capital Reserve (1431)</u> <u>(32)</u>	<u>Other Capital Projects</u> <u>Fund</u> <u>(39)</u>	<u>Debt Service</u> <u>(40)</u>	<u>Permanent</u> <u>(90)</u>
<b>Special And Extraordinary Items</b>					
9920 Special Items – Gains					
9930 Extraordinary Items – Gains					
5520 Special Items – Losses					
5530 Extraordinary Items – Losses					
<b>Net Change In Fund Balances</b>		<b>\$1,392,524</b>	<b>(\$2,136,821)</b>		
<b>Fund Balance</b>					
0001 Fund Balance - Beginning of Fiscal Year		1,152,080	3,381,721		
<b>Fund Balance - End Of Year</b>		<b>\$2,544,604</b>	<b>\$1,244,900</b>		

Amounts Expressed in Whole Dollars	<u>Total Governmental Funds</u>
<b>Special And Extraordinary Items</b>	
9920 Special Items – Gains	
9930 Extraordinary Items – Gains	
5520 Special Items – Losses	
5530 Extraordinary Items – Losses	
<b>Net Change In Fund Balances</b>	<b>\$1,510,309</b>
<b>Fund Balance</b>	
0001 Fund Balance - Beginning of Fiscal Year	23,267,168
<b>Fund Balance - End Of Year</b>	<b>\$24,777,477</b>

Amounts Expressed in Whole Dollars	<u>Food Service</u> <u>(51)</u>	<u>Child Care</u> <u>Operations</u> <u>(52)</u>	<u>Other Enterprise</u> <u>(58)</u>	<u>TOTAL</u>	<u>Internal Service</u> <u>(60)</u>
<b>Assets And Deferred Outflows Of Resources</b>					
<b>Current Assets</b>					
0100 Cash and Cash Equivalents	133,558			133,558	784,438
0110 Investments					700,000
0130 Due From Other Funds					
0141 Due From Other Governments	27,050			27,050	
0142 State Revenue Receivable					
0143 Federal Revenue Receivable					
0146 Due from Primary Government					
0147 Due from Component Unit					
0150 Other Receivables					
0170 Inventories	151,585			151,585	
0180 Prepaid Expenses (Expenditures)					
0190 Other Current Assets					
<b>Total Current Assets</b>	<b>\$312,193</b>			<b>\$312,193</b>	<b>\$1,484,438</b>
<b>Noncurrent Assets</b>					
0211 Land					
0212 Site Improvements (Net)					
0220 Buildings and Building Improvements (Net)					
0230 Machinery, Equipment and Furniture (Net)	87,111			87,111	
0250 Construction in Progress					
0260 Long Term Prepayments					
0290 Other Noncurrent Assets					
<b>Total Noncurrent Assets</b>	<b>\$87,111</b>			<b>\$87,111</b>	
0910 Deferred Outflows of Resources	285,757			285,757	
<b>Total Assets And Deferred Outflows Of Resources</b>	<b>\$685,061</b>			<b>\$685,061</b>	<b>\$1,484,438</b>

Amounts Expressed in Whole Dollars	<u>Food Service</u> <u>(51)</u>	<u>Child Care</u> <u>Operations</u> <u>(52)</u>	<u>Other Enterprise</u> <u>(58)</u>	<u>TOTAL</u>	<u>Internal Service</u> <u>(60)</u>
<b>Liabilities And Deferred Inflows Of Resources And Net Position</b>					
<b>Current Liabilities</b>					
0400 Due to Other Funds	195,460			195,460	227,503
0411 Due to Other Governments					
0413 Due to Component Unit					
0420 Accounts Payable	5,206			5,206	
0430 Contracts Payable					
0440 Current Portion of Long-Term Debt					
0450 Short-Term Payables					
0461 Accrued Salaries and Benefits	5,889			5,889	639,977
0462 Payroll Deductions and Withholding					
0480 Unearned Revenues	107,059			107,059	
0490 Other Current Liabilities					
<b>Total Current Liabilities</b>	<b>\$313,614</b>			<b>\$313,614</b>	<b>\$867,480</b>
<b>Noncurrent Liabilities</b>					
0510 Bonds Payable					
0520 Extended-Term Financing Agreements Payable					
0530 Lease-Purchase Obligations					
0540 Accumulated Compensated Absences					
0550 Authority Lease Obligations					
0560 Other Post-Employment Benefits (OPEB)	89,832			89,832	
0570 Net Pension Liability	1,975,959			1,975,959	
0599 Other Noncurrent Liabilities					
<b>Total Noncurrent Liabilities</b>	<b>\$2,065,791</b>			<b>\$2,065,791</b>	
<b>Total Liabilities</b>	<b>\$2,379,405</b>			<b>\$2,379,405</b>	<b>\$867,480</b>
0950 Deferred Inflows of Resources	101,374			101,374	
<b>Net Position</b>					
0791 Net Investment in Capital Assets	87,111			87,111	
0008 Restricted Net Position (0792 – 0798)					
0799 Unrestricted Net Position	(1,882,829)			(1,882,829)	616,958
<b>Total Net Position</b>	<b>(\$1,795,718)</b>			<b>(\$1,795,718)</b>	<b>\$616,958</b>
<b>Total Liabilities And Deferred Inflows Of Resources And Net Position</b>	<b>\$685,061</b>			<b>\$685,061</b>	<b>\$1,484,438</b>

Amounts Expressed in Whole Dollars	<u>Food Service</u> <u>(51)</u>	<u>Child Care Operations</u> <u>(52)</u>	<u>Other Enterprise</u> <u>(58)</u>	<u>TOTAL</u>	<u>Internal Service</u> <u>(60)</u>
<b>Operating Revenues</b>					
6600 Food Service Revenue	612,732			612,732	
0071 Charges for Services					4,139,821
0072 Other Operating Revenue					
<b>Total Operating Revenues</b>	<b>\$612,732</b>			<b>\$612,732</b>	<b>\$4,139,821</b>
<b>Operating Expenses</b>					
100 Personnel Services – Salaries	604,232			604,232	
200 Personnel Services – Employee Benefits	348,173			348,173	5,007,301
300 Purchased Professional and Technical Services	31			31	
400 Purchased Property Services	28,039			28,039	
500 Other Purchased Services	637			637	
600 Supplies	698,894			698,894	
740 Depreciation	25,559			25,559	
810 Dues and Fees	686			686	
890 Miscellaneous Expenditures					
<b>Total Operating Expenses</b>	<b>\$1,706,251</b>			<b>\$1,706,251</b>	<b>\$5,007,301</b>
<b>Operating Income (Loss)</b>	<b>(\$1,093,519)</b>			<b>(\$1,093,519)</b>	<b>(\$867,480)</b>
<b>Non Operating Revenues (Expenses)</b>					
6500 Earnings on Investments	1,301			1,301	19,135
6920 Contributions and Donations from Private Sources	3,918			3,918	
6930 Gains or Losses on Sale of Fixed Assets					
6991 Refunds of a Prior Year Expenditure					
7000 Revenue from State Sources	162,378			162,378	
8000 Revenue from Federal Sources	796,034			796,034	
9990 Insurance Recoveries					
820 Claims and Judgments Against the LEA					
830 Interest					
<b>TOTAL Non Operating Revenues (Expenses)</b>	<b>\$963,631</b>			<b>\$963,631</b>	<b>\$19,135</b>
<b>Income (Loss) Before Contributions And Transfers</b>	<b>(\$129,888)</b>			<b>(\$129,888)</b>	<b>(\$848,345)</b>

Amounts Expressed in Whole Dollars	<u>Food Service</u> <u>(51)</u>	<u>Child Care Operations</u> <u>(52)</u>	<u>Other Enterprise</u> <u>(58)</u>	<u>TOTAL</u>	<u>Internal Service</u> <u>(60)</u>
<b>Contributions, Transfers, and Special and Extraordinary Items</b>					
5200 Interfund Transfers – Out					
5300 Transfers Out to Component Units/Primary Governments					
5520 Special Items – Losses					
5530 Extraordinary Items – Losses					
9300 Interfund Transfers - IN					
9500 Capital Contributions					
9700 Transfers IN From Component Units/Primary Governments					
9920 Special Items – Gains					
9930 Extraordinary Items – Gains					
<b>Change In Net Position</b>	<b>(\$129,888)</b>			<b>(\$129,888)</b>	<b>(\$848,345)</b>
0002 Net Position - Beginning of Fiscal Year	(1,665,830)			(1,665,830)	1,465,303
0003 Accounting Changes / Residual Equity Transfers					
<b>Net Position - End Of Year</b>	<b>(\$1,795,718)</b>			<b>(\$1,795,718)</b>	<b>\$616,958</b>

Amounts Expressed in Whole Dollars	<u>Food Service</u> <u>(51)</u>	<u>Child Care Operations</u> <u>(52)</u>	<u>Other Enterprise</u> <u>(58)</u>	<u>TOTAL</u>	<u>Internal Service(60)</u>
<b>Cash Flows From Operating Activities</b>					
0011 Cash Receipts From Users	657,637			657,637	
0012 Cash Receipts From Assessments Made to Other Funds					4,754,580
0013 Cash Receipts From Earnings on Investments					
0014 Cash Receipts From Other Operating Revenue					
0015 Cash Payments To Employees For Services	779,800			779,800	
0016 Cash Payments For Insurance Claims					4,754,580
0017 Cash Payments To Suppliers For Goods and Services	654,988			654,988	
0018 Cash Payments For Other Operating Expenses	686			686	
<b>Net Cash Provided By (Used For) Operating Activities</b>	<b>(\$777,837)</b>			<b>(\$777,837)</b>	<b>\$0</b>
<b>Cash Flows From Non-Capital Financing Activities</b>					
0021 Receipts From Local Sources - 6000	3,918			3,918	
0022 Receipts From State Sources - 7000	162,014			162,014	
0023 Receipts From Federal Sources -8000	689,087			689,087	
0024 Notes and Loans Received (Repaid)					
0025 Interest Paid on Notes/Loans - 5100-830					
0026 Operating Transfers In (Out)/Residual Equity Trans					
0027 Operating Transfers In (Out) Primary Government / Comp Unit					
0028 Receipts From Refund of Prior Year Expenditures - 6991					
0029 Special and Extraordinary Gains (losses)					
0030 Receipts from Insurance Recoveries -9990					
<b>Net Cash Prov By (Used for) Non-Capital Financing Activities</b>	<b>\$855,019</b>			<b>\$855,019</b>	
<b>Cash Flows From Capital and Related Financing Activities</b>					
0031 Payments For Fac Acq, Const, and Imp - 4000					
0032 Gain / (Loss) on Sale of Fixed Assets - 6930					
0033 Proceeds From Extended Term Financing - 9200					
0034 Principal Paid on Financing Agreements					
0035 Interest Paid on Financing Agreements - 5100-830					
0036 (Inc) Dec in Contributed Capital					
<b>Net Cash Prov By (Used for) Capital and Related Financing Activities</b>					
<b>Cash Flows From Investing Activities</b>					
0041 Earnings on Investments - 6500	1,301			1,301	19,135
0042 Purchase of Inv Securities / Deposits to Inv Pools					
0043 Receipts From Investment Pool Withdrawals					
0044 Proceeds from Sale and Maturity of Inv Securities					

LEA : 113364403 Manheim Central SD

Printed 1/4/2021 10:26:05 AM

0045 Loans Received (Paid)

<b>Net Cash Prov By (Used for) Investing Activities</b>	<b>\$1,301</b>	<b>\$1,301</b>	<b>\$19,135</b>
---	----------------	----------------	-----------------

	<u>Food Service</u> <u>(51)</u>	<u>Child Care Operations</u> <u>(52)</u>	<u>Other Enterprise</u> <u>(58)</u>	<u>TOTAL</u>	<u>Internal Service</u> <u>(60)</u>
<b>Net Increase (Decrease) in Cash Flows</b>	<b>78,483</b>			<b>78,483</b>	<b>19,135</b>
0004 Cash and Cash Equivalents Beginning of Year	55,075			55,075	765,303
<b>Cash and Cash Equivalents at Year End</b>	<b>\$133,558</b>			<b>\$133,558</b>	<b>\$784,438</b>
<hr/>					
<b>Reconciliation of Operating Income (Loss) To Net Cash Provided by (Used For) Operating Activities</b>					
0005 Operating Income (Loss) per REP	(1,093,519)			(1,093,519)	(867,480)
<b>Adjustments</b>					
0051 Depreciation and Net Amortization	25,559			25,559	
0052 Provision for Uncollectible Accounts					
0053 Other Adjustments	92,518			92,518	
<b>Effect of Changes in Assets, Liabilities, Deferred Outflows and Deferred Inflows</b>					
0054 (Inc) Dec In Accounts Receivable (0120-0150)	6,532			6,532	
0055 Advances to Other Funds (0160)	84,341			84,341	387,256
0056 (Inc) Dec in Inventories (0170)	(52,710)			(52,710)	
0057 (Inc) Dec in Prepaid Expenses (0180)					
0058 (Inc) Dec in Other Current or Noncurrent Assets					
0064 Deferred Outflows (0910)	51,263			51,263	
0059 Inc (Dec) in Accounts Payable (0400-0450)	42			42	
0060 Inc (Dec) in Accrued Salaries/Benefits (0461)	4,316			4,316	252,721
0065 Inc (Dec) in Net Pension Liabilities (0570)	(84,114)			(84,114)	
0066 Inc (Dec) in Other Postemp Benefit Oblig (0560)	359			359	
0061 Inc (Dec) in Payroll Deductions/Withholding (0462)					
0062 Inc (Dec) in Unearned Revenue (0480)	71,136			71,136	
0063 Inc (Dec) in Other Current or Noncurrent Liabilities	92,446			92,446	227,503
0067 Deferred Inflows (0950)	23,994			23,994	
<b>Total Adjustments</b>	<b>\$315,682</b>			<b>\$315,682</b>	<b>\$867,480</b>
<b>Cash Provided By (Used for) Total</b>	<b>(\$777,837)</b>			<b>(\$777,837)</b>	

**COMBINED STATEMENT OF CASH FLOWS**  
**SCHEDULE OF NONCASH INVESTING, CAPITAL, AND FINANCING ACTIVITIES**

Explanation of Transaction and Balance Sheet Effect	Amount
USDA Donated Commodities	92,518
<b>Total</b>	<b>\$92,518</b>

LEA : 113364403 Manheim Central SD

Printed 1/4/2021 10:26:09 AM

Amounts Expressed in Whole Dollars

	<u>Private Purpose Trust</u> <u>(71)</u>	<u>Investment Trust</u> <u>(72)</u>	<u>Pension Trust</u> <u>(73)</u>	<u>Student Activity Custodial</u> <u>(81)</u>
<b>Assets And Deferred Outflows Of Resources</b>				
<b>Assets</b>				
0100 Cash and Cash Equivalents	20,770			196,597
0110 Investments	1,000,307			
0130 Due From Other Funds				
0140 Due from Other Governments, Primary Government and Component Units				
0150 Other Receivables				
0170 Inventories				
0180 Prepaid Expenses (Expenditures)				
0190 Other Current Assets				
0220 Buildings and Building Improvements (Net)				
0230 Machinery, Equipment and Furniture (Net)				
<b>Total Assets</b>	<b>\$1,021,077</b>			<b>\$196,597</b>
0910 Deferred Outflows of Resources				
<b>Total Assets And Deferred Outflows Of Resources</b>	<b>\$1,021,077</b>			<b>\$196,597</b>

LEA : 113364403 Manheim Central SD

Printed 1/4/2021 10:26:09 AM

Amounts Expressed in Whole Dollars

Other Custodial      Fiduciary Component Units      Total Fiduciary Funds  
(89)                                      (98)

**Assets And Deferred Outflows Of Resources**

**Assets**

0100 Cash and Cash Equivalents		217,367
0110 Investments		1,000,307
0130 Due From Other Funds		
0140 Due from Other Governments, Primary Government and Component Units		
0150 Other Receivables		
0170 Inventories		
0180 Prepaid Expenses (Expenditures)		
0190 Other Current Assets		
0220 Buildings and Building Improvements (Net)		
0230 Machinery, Equipment and Furniture (Net)		

**Total Assets** **\$1,217,674**

0910 Deferred Outflows of Resources

**Total Assets And Deferred Outflows Of Resources** **\$1,217,674**

LEA : 113364403 Manheim Central SD

Printed 1/4/2021 10:26:09 AM

Amounts Expressed in Whole Dollars	<u>Private Purpose Trust</u> (71)	<u>Investment Trust</u> (72)	<u>Pension Trust</u> (73)	<u>Student Activity Custodial</u> (81)
<b>Liabilities, Deferred Inflows Of Resources And Net Position</b>				
<b>Liabilities</b>				
0400 Due to Other Funds				
0410 Due to Other Governments, Primary Government and Component Units				
0420 Accounts Payable				991
0430 Contracts Payable				
0450 Short-Term Payables				
0460 Payroll Accruals and Withholdings				
0480 Unearned Revenues				
0490 Other Current Liabilities				195,606
<b>Total Liabilities</b>				<b>\$196,597</b>
0950 Deferred Inflows of Resources				
<b>Net Position</b>				
0791 Net Investment in Capital Assets				
0009 Restricted Net Position (0792 – 0798)	1,021,077			
0799 Unrestricted Net Position				
<b>Total Net Position</b>	<b>\$1,021,077</b>			
<b>Total Liabilities, Deferred Inflows Of Resources And Net Position</b>	<b>\$1,021,077</b>			<b>\$196,597</b>

LEA : 113364403 Manheim Central SD

Printed 1/4/2021 10:26:09 AM

Amounts Expressed in Whole Dollars	<u>Other Custodial</u> <u>(89)</u>	<u>Fiduciary Component Units</u> <u>(98)</u>	<u>Total Fiduciary Funds</u>
<b>Liabilities, Deferred Inflows Of Resources And Net Position</b>			
<b>Liabilities</b>			
0400 Due to Other Funds			
0410 Due to Other Governments, Primary Government and Component Units			
0420 Accounts Payable			991
0430 Contracts Payable			
0450 Short-Term Payables			
0460 Payroll Accruals and Withholdings			
0480 Unearned Revenues			
0490 Other Current Liabilities			195,606
<b>Total Liabilities</b>			<b>\$196,597</b>
0950 Deferred Inflows of Resources			
<b>Net Position</b>			
0791 Net Investment in Capital Assets			
0009 Restricted Net Position (0792 – 0798)			1,021,077
0799 Unrestricted Net Position			
<b>Total Net Position</b>			<b>\$1,021,077</b>
<b>Total Liabilities, Deferred Inflows Of Resources And Net Position</b>			<b>\$1,217,674</b>

Amounts Expressed in Whole Dollars	<u>Private Purpose Trust</u> (71)	<u>Investment Trust</u> (72)	<u>Pension Trust</u> (73)	<u>Student Activity</u> <u>Custodial</u> (81)	<u>Other Custodial</u> (89)	<u>Fiduciary Component</u> <u>Units</u> (98)
<b>Additions</b>						
0091 Gifts and Contributions	25					
0095 Net Investment Earnings	12,322					
0092 Other Additions						
<b>Deductions</b>						
0093 Scholarships Awarded	14,275					
0094 Other Deductions						
<b>Change In Net Position</b>	<b>(\$1,928)</b>					
0006 Net Position – Beginning of Fiscal Year	1,023,005					
0007 Net Position Held in Trust for Pension Benefits						
<b>Net Position - End of Fiscal Year</b>	<b>\$1,021,077</b>					

Amounts Expressed in Whole Dollars	<u>Total Fiduciary Funds</u>
<b>Additions</b>	
0091 Gifts and Contributions	25
0095 Net Investment Earnings	12,322
0092 Other Additions	
<b>Deductions</b>	
0093 Scholarships Awarded	14,275
0094 Other Deductions	
<b>Change in Net Position</b>	<b>(\$1,928)</b>
0006 Net Position – Beginning of Fiscal Year	1,023,005
0007 Net Position Held in Trust for Pension Benefits	
<b>Net Position - End of Fiscal Year</b>	<b>\$1,021,077</b>

	<u>Revenue Reported In Current Year</u>	<u>Current Year Tax Accrual</u>	<u>Prior Year Tax Accrual</u>	<u>Taxes Collected In Current Year</u>
<b><u>Revenue from Local Sources</u></b>				
6111 Current Real Estate Taxes	32,402,641.90			32,402,641.90
6112 Interim Real Estate Taxes	377,115.80	45,939.87	14,951.19	346,127.12
6113 Public Utility Realty Taxes	32,527.83			32,527.83
6114 Payments in Lieu of Current Taxes - State / Local	2,985.20			2,985.20
6151 Current Act 511 Earned Income Taxes	3,632,517.50	741,779.37	691,139.32	3,581,877.45
6153 Current Act 511 Real Estate Transfer Taxes	602,590.72	108,758.63	130,226.64	624,058.73
6411 Delinquent Real Estate Taxes	404,289.93	95,483.76	202,645.45	511,451.62
6500 Earnings on Investments	512,383.29			
6700 Revenues from LEA Activities	89,549.55			
6832 Federal IDEA Revenue Received as Pass Through	521,562.00			
6839 Federal Revenue Received from Other Sources	75,628.03			
6910 Rentals	13,230.00			
6944 Receipts from Other LEAs in Pennsylvania - Education	166,638.80			
6991 Refunds of a Prior Year Expenditure	33,256.27			
6999 Other Revenues Not Specified Above	547,337.92			
<b>TOTAL Revenue from Local Sources</b>	<b>\$39,414,254.74</b>	<b>\$991,961.63</b>	<b>\$1,038,962.60</b>	<b>\$37,501,669.85</b>

**Revenue Reported  
In Current Year**

**Revenue from State Sources**

7111 Basic Education Funding-Formula	7,251,081.38		
7112 Basic Education Funding-Social Security	685,595.73		
7160 Tuition for Orphans Subsidy	27,249.08		
7220 Vocational Education	30,632.38		
7271 Special Education funds for School-Aged Pupils	1,662,432.80		
7311 Pupil Transportation Subsidy	1,072,198.52		
7312 Nonpublic and Charter School Pupil Transportation Subsidy	92,400.00		
7320 Rental and Sinking Fund Payments / Building Reimbursement Subsidy	1,082,585.83		
7330 Health Services (Medical, Dental, Nurse, Act 25)	61,424.52		
7340 State Property Tax Reduction Allocation	831,850.08		
7361 School Safety and Security Grants	32,528.39		
7505 Ready to Learn Block Grant	301,665.00		
7506 PAsmart Grants	30,882.30		
7820 State Share of Retirement Contributions	3,630,958.64		
<b>TOTAL Revenue from State Sources</b>	<b>\$16,793,484.65</b>		

**Revenue Reported  
In Current Year**

**Revenue from Federal Sources**

8514 NCLB, Title I - Improving the Academic Achievement of the Disadvantaged	472,085.71		
8515 NCLB, Title II - Preparing, Training and Recruiting High Quality Teachers and Principals	93,821.00		
8516 NCLB, Title III - Language Instruction for Limited English Proficient and Immigrant Students	1,037.00		
8517 NCLB, Title IV - 21St Century Schools	35,360.00		
8749 Other CARES Act Funding	35,719.57		
8810 School-Based Access Medicaid Reimbursement Program (SBAP) Reimbursements (Access)	164,000.00		
8820 Medical Assistance Reimbursement for Administrative Claiming (Quarterly) Program	9,661.93		
<b>TOTAL Revenue from Federal Sources</b>	<b>\$811,685.21</b>		

Revenue Reported  
In Current Year

**Other Financing Sources**

9120 Proceeds from Refunding of Bonds	35,147.10			
9400 Sale of or Compensation for Loss of Fixed Assets	2,135,500.00			
<b>TOTAL Other Financing Sources</b>	<b>\$2,170,647.10</b>			
<b>TOTAL FROM ALL SOURCES</b>	<b>\$59,190,071.70</b>	<b>\$991,961.63</b>	<b>\$1,038,962.60</b>	<b>\$37,501,669.85</b>

	<u>General Fund (10)</u>	<u>Student Sponsored Activity Fund (21)</u>	<u>Public Purpose Trust (27)</u>	<u>Other Compt Approved (28)</u>	<u>Athletic / Activity (29)</u>	<u>Capital Reserve (690, 1850) (31)</u>
<b>6000 Revenue from Local Sources</b>						
6111 Current Real Estate Taxes	32,402,641.90					
6112 Interim Real Estate Taxes	377,115.80					
6113 Public Utility Realty Taxes	32,527.83					
6114 Payments in Lieu of Current Taxes - State / Local	2,985.20					
6151 Current Act 511 Earned Income Taxes	3,632,517.50					
6153 Current Act 511 Real Estate Transfer Taxes	602,590.72					
6411 Delinquent Real Estate Taxes	404,289.93					
6500 Earnings on Investments	512,383.29					
6700 Revenues from LEA Activities	89,549.55					
6832 Federal IDEA Revenue Received as Pass Through	521,562.00					
6839 Federal Revenue Received from Other Sources	75,628.03					
6910 Rentals	13,230.00					
6944 Receipts from Other LEAs in Pennsylvania - Education	166,638.80					
6991 Refunds of a Prior Year Expenditure	33,256.27					
6999 Other Revenues Not Specified Above	547,337.92					
<b>6000 Total Revenue from Local Sources</b>	<b>\$39,414,254.74</b>					
<b>7000 Revenue from State Sources</b>						
7111 Basic Education Funding-Formula	7,251,081.38					
7112 Basic Education Funding-Social Security	685,595.73					
7160 Tuition for Orphans Subsidy	27,249.08					
7220 Vocational Education	30,632.38					
7271 Special Education funds for School-Aged Pupils	1,662,432.80					
7311 Pupil Transportation Subsidy	1,072,198.52					
7312 Nonpublic and Charter School Pupil Transportation Subsidy	92,400.00					
7320 Rental and Sinking Fund Payments / Building Reimbursement Subsidy	1,082,585.83					
7330 Health Services (Medical, Dental, Nurse, Act 25)	61,424.52					
7340 State Property Tax Reduction Allocation	831,850.08					
7361 School Safety and Security Grants	32,528.39					
7505 Ready to Learn Block Grant	301,665.00					
7506 PAsmart Grants	30,882.30					
7820 State Share of Retirement Contributions	3,630,958.64					
<b>7000 Total Revenue from State Sources</b>	<b>\$16,793,484.65</b>					
<b>8000 Revenue from Federal Sources</b>						
8514 NCLB, Title I - Improving the Academic Achievement of the Disadvantaged	472,085.71					

LEA : 113364403 Manheim Central SD

Printed 1/4/2021 10:26:18 AM

	<u>Capital Reserve</u> <u>(1431) (32)</u>	<u>Other Capital</u> <u>Projects Fund (39)</u>	<u>Debt Service (40)</u>	<u>Permanent (90)</u>	<u>Total</u>
<b>6000 Revenue from Local Sources</b>					
6111 Current Real Estate Taxes					32,402,641.90
6112 Interim Real Estate Taxes					377,115.80
6113 Public Utility Realty Taxes					32,527.83
6114 Payments in Lieu of Current Taxes - State / Local					2,985.20
6151 Current Act 511 Earned Income Taxes					3,632,517.50
6153 Current Act 511 Real Estate Transfer Taxes					602,590.72
6411 Delinquent Real Estate Taxes					404,289.93
6500 Earnings on Investments	13,115.97	35,439.16			560,938.42
6700 Revenues from LEA Activities					89,549.55
6832 Federal IDEA Revenue Received as Pass Through					521,562.00
6839 Federal Revenue Received from Other Sources					75,628.03
6910 Rentals					13,230.00
6944 Receipts from Other LEAs in Pennsylvania - Education					166,638.80
6991 Refunds of a Prior Year Expenditure	62,767.92				96,024.19
6999 Other Revenues Not Specified Above					547,337.92
<b>6000 Total Revenue from Local Sources</b>	<b>\$75,883.89</b>	<b>\$35,439.16</b>			<b>\$39,525,577.79</b>
<b>7000 Revenue from State Sources</b>					
7111 Basic Education Funding-Formula					7,251,081.38
7112 Basic Education Funding-Social Security					685,595.73
7160 Tuition for Orphans Subsidy					27,249.08
7220 Vocational Education					30,632.38
7271 Special Education funds for School-Aged Pupils					1,662,432.80
7311 Pupil Transportation Subsidy					1,072,198.52
7312 Nonpublic and Charter School Pupil Transportation Subsidy					92,400.00
7320 Rental and Sinking Fund Payments / Building Reimbursement Subsidy					1,082,585.83
7330 Health Services (Medical, Dental, Nurse, Act 25)					61,424.52
7340 State Property Tax Reduction Allocation					831,850.08
7361 School Safety and Security Grants					32,528.39
7505 Ready to Learn Block Grant					301,665.00
7506 PAsmart Grants					30,882.30
7820 State Share of Retirement Contributions					3,630,958.64
<b>7000 Total Revenue from State Sources</b>					<b>\$16,793,484.65</b>
<b>8000 Revenue from Federal Sources</b>					
8514 NCLB, Title I - Improving the Academic Achievement of the Disadvantaged					472,085.71

	<u>General Fund (10)</u>	<u>Student Sponsored Activity Fund (21)</u>	<u>Public Purpose Trust (27)</u>	<u>Other Compt Approved (28)</u>	<u>Athletic / Activity (29)</u>	<u>Capital Reserve (690, 1850) (31)</u>
<b>8000 Revenue from Federal Sources</b>						
8515 NCLB, Title II - Preparing, Training and Recruiting High Quality Teachers and Principals	93,821.00					
8516 NCLB, Title III - Language Instruction for Limited English Proficient and Immigrant Students	1,037.00					
8517 NCLB, Title IV - 21st Century Schools	35,360.00					
8749 Other CARES Act Funding	35,719.57					
8810 School-Based Access Medicaid Reimbursement Program (SBAP) Reimbursements (Access)	164,000.00					
8820 Medical Assistance Reimbursement for Administrative Claiming (Quarterly) Program	9,661.93					
<b>8000 Total Revenue from Federal Sources</b>	<b>\$811,685.21</b>					
<b>9000 Other Financing Sources</b>						
9120 Proceeds from Refunding of Bonds	35,147.10					
9130 Bond Premiums						
9290 Other Extended-Term Financing Proceeds						
9310 General Fund Transfers						
9400 Sale of or Compensation for Loss of Fixed Assets	2,135,500.00					
<b>9000 Total Other Financing Sources</b>	<b>\$2,170,647.10</b>					
<b>Total From All Sources</b>	<b>\$59,190,071.70</b>					

	<u>Capital Reserve</u> <u>(1431) (32)</u>	<u>Other Capital</u> <u>Projects Fund (39)</u>	<u>Debt Service (40)</u>	<u>Permanent (90)</u>	<u>Total</u>
<b>8000 Revenue from Federal Sources</b>					
8515 NCLB, Title II - Preparing, Training and Recruiting High Quality Teachers and Principals					93,821.00
8516 NCLB, Title III - Language Instruction for Limited English Proficient and Immigrant Students					1,037.00
8517 NCLB, Title IV - 21st Century Schools					35,360.00
8749 Other CARES Act Funding					35,719.57
8810 School-Based Access Medicaid Reimbursement Program (SBAP) Reimbursements (Access)					164,000.00
8820 Medical Assistance Reimbursement for Administrative Claiming (Quarterly) Program					9,661.93
<b>8000 Total Revenue from Federal Sources</b>					<b>\$811,685.21</b>
<b>9000 Other Financing Sources</b>					
9120 Proceeds from Refunding of Bonds		8,885,000.00			8,920,147.10
9130 Bond Premiums		418,938.15			418,938.15
9290 Other Extended-Term Financing Proceeds		429,992.00			429,992.00
9310 General Fund Transfers	2,134,271.73				2,134,271.73
9400 Sale of or Compensation for Loss of Fixed Assets					2,135,500.00
<b>9000 Total Other Financing Sources</b>	<b>\$2,134,271.73</b>	<b>\$9,733,930.15</b>			<b>\$14,038,848.98</b>
<b>Total From All Sources</b>	<b>\$2,210,155.62</b>	<b>\$9,769,369.31</b>			<b>\$71,169,596.63</b>

	<u>General Fund (10)</u>	<u>Student Sponsored Activity Fund (21)</u>	<u>Public Purpose Trust (27)</u>	<u>Other Compt Approved (28)</u>	<u>Athletic / Activity (29)</u>	<u>Capital Reserve (690.1850) (31)</u>
Revenue from Local Sources	39,414,254.74					
Revenue from State Sources	16,793,484.65					
Revenue from Federal Sources	811,685.21					
Other Financing Sources	2,170,647.10					
<b>Total From All Sources</b>	<b>\$59,190,071.70</b>					

	<u>Capital Reserve (1431)</u> <u>(32)</u>	<u>Other Capital Projects</u> <u>Fund (39)</u>	<u>Debt Service (40)</u>	<u>Permanent (90)</u>	<u>Total</u>
Revenue from Local Sources	75,883.89	35,439.16			39,525,577.79
Revenue from State Sources					16,793,484.65
Revenue from Federal Sources					811,685.21
Other Financing Sources	2,134,271.73	9,733,930.15			14,038,848.98
<b>Total From All Sources</b>	<b>\$2,210,155.62</b>	<b>\$9,769,369.31</b>			<b>\$71,169,596.63</b>

**General Fund (10)**

	<u>Total</u>
<b>1000 Instruction</b>	
<b>100 Personnel Services – Salaries</b>	
100 Personnel Services – Salaries	15,256,389.24
<b>Total Personnel Services – Salaries</b>	<b>\$15,256,389.24</b>
<b>200 Personnel Services – Employee Benefits</b>	
210 Group Insurance – Contracted Provider	21,896.52
220 Social Security Contributions	1,126,423.61
230 PSERS Retirement Contributions	5,210,366.06
250 Unemployment Compensation	4,380.43
260 Workers’ Compensation	92,812.00
270 Group Insurance – Self-Insurance	2,422,527.62
299 All Other Employee Benefits	41,626.67
<b>Total Personnel Services – Employee Benefits</b>	<b>\$8,920,032.91</b>
<b>300 Purchased Professional and Technical Services</b>	
322 Professional Educational Services – Ius	3,295,667.30
329 Professional Educational Services – Other	360,024.89
350 Security / Safety Services	432.54
360 Employee Training and Development Services	1,380.00
390 Other Purchased Professional and Technical Services	108,553.38
<b>Total Purchased Professional and Technical Services</b>	<b>\$3,766,058.11</b>
<b>400 Purchased Property Services</b>	
430 Repairs and Maintenance Services	2,675.00
440 Rentals	726,400.34
<b>Total Purchased Property Services</b>	<b>\$729,075.34</b>
<b>500 Other Purchased Services</b>	
510 Student Transportation Services	19,483.02
530 Communications	11.16
550 Printing and Binding	6,356.90
561 Tuition To Other School Districts Within the State	44,738.80
562 Tuition To Pennsylvania Charter Schools	791,352.90
563 Tuition To Nonpublic Schools	145,144.84
564 Tuition To Career and Technology Centers	887,762.16
568 Tuition To Private Residential Rehabilitative Institutions (PRRI) [In-State] and Detention Centers	297,872.20
569 Tuition – Other	646.00
580 Travel	1,406.38
594 IU Payment By Withholding for Institutionalized Children’s Programs – Special Classes	155,443.00
<b>Total Other Purchased Services</b>	<b>\$2,350,217.36</b>
<b>600 Supplies</b>	
610 General Supplies	328,331.50
640 Books and Periodicals	310,084.02
650 Supplies & Fees – Technology Related	354,696.95
<b>Total Supplies</b>	<b>\$993,112.47</b>
<b>800 Other Objects</b>	

<b>General Fund (10)</b>		
<b>1000 Instruction</b>		<u><b>Total</b></u>
<b>800 Other Objects</b>		
810 Dues and Fees		7,068.98
<b>Total Other Objects</b>		<b>\$7,068.98</b>
<b>Total 1000 Instruction</b>		<b>\$32,021,954.41</b>

**General Fund (10)**

**1100 Regular Programs – Elementary / Secondary**

	<u>Elementary</u>	<u>Secondary</u>	<u>Federal</u>	<u>Total</u>
<b>100 Personnel Services – Salaries</b>				
100 Personnel Services – Salaries	6,113,831.73	5,816,363.02	530,563.61	12,460,758.36
<b>Total Personnel Services – Salaries</b>	<b>\$6,113,831.73</b>	<b>\$5,816,363.02</b>	<b>\$530,563.61</b>	<b>\$12,460,758.36</b>
<b>200 Personnel Services – Employee Benefits</b>				
210 Group Insurance – Contracted Provider	9,405.76	8,322.20		17,727.96
220 Social Security Contributions	458,198.55	429,619.15	32,616.09	920,433.79
230 PSERS Retirement Contributions	2,115,094.94	1,991,916.53	151,297.15	4,258,308.62
250 Unemployment Compensation	2,190.21	2,190.22		4,380.43
260 Workers' Compensation	46,406.00	46,406.00		92,812.00
270 Group Insurance – Self-Insurance	930,356.98	926,317.10	62,852.22	1,919,526.30
299 All Other Employee Benefits	20,813.33	20,813.34		41,626.67
<b>Total Personnel Services – Employee Benefits</b>	<b>\$3,582,465.77</b>	<b>\$3,425,584.54</b>	<b>\$246,765.46</b>	<b>\$7,254,815.77</b>
<b>300 Purchased Professional and Technical Services</b>				
322 Professional Educational Services – Ius	48,820.23	48,820.25		97,640.48
329 Professional Educational Services – Other	219,113.69	130,191.20		349,304.89
390 Other Purchased Professional and Technical Services	25,867.73	24,382.30		50,250.03
<b>Total Purchased Professional and Technical Services</b>	<b>\$293,801.65</b>	<b>\$203,393.75</b>		<b>\$497,195.40</b>
<b>400 Purchased Property Services</b>				
430 Repairs and Maintenance Services		2,675.00		2,675.00
440 Rentals	413,715.25	312,685.09		726,400.34
<b>Total Purchased Property Services</b>	<b>\$413,715.25</b>	<b>\$315,360.09</b>		<b>\$729,075.34</b>
<b>500 Other Purchased Services</b>				
510 Student Transportation Services	2,678.42	19,538.21		22,216.63
530 Communications		11.16		11.16
550 Printing and Binding	3,178.45	3,178.45		6,356.90
561 Tuition To Other School Districts Within the State	16,572.64	14,278.49		30,851.13
562 Tuition To Pennsylvania Charter Schools	277,126.40	376,597.00		653,723.40
563 Tuition To Nonpublic Schools	3,555.00	3,555.00		7,110.00
569 Tuition – Other	323.00	323.00		646.00
580 Travel	455.74	246.33		702.07
<b>Total Other Purchased Services</b>	<b>\$303,889.65</b>	<b>\$417,727.64</b>		<b>\$721,617.29</b>
<b>600 Supplies</b>				
610 General Supplies	78,756.42	150,635.44	27,299.71	256,691.57
640 Books and Periodicals	153,921.46	156,162.56		310,084.02
650 Supplies & Fees – Technology Related	87,000.92	264,215.54		351,216.46
<b>Total Supplies</b>	<b>\$319,678.80</b>	<b>\$571,013.54</b>	<b>\$27,299.71</b>	<b>\$917,992.05</b>
<b>800 Other Objects</b>				
810 Dues and Fees		4,486.93		4,486.93
<b>Total Other Objects</b>		<b>\$4,486.93</b>		<b>\$4,486.93</b>
<b>Total 1100 Regular Programs – Elementary / Secondary</b>	<b>\$11,027,382.85</b>	<b>\$10,753,929.51</b>	<b>\$804,628.78</b>	<b>\$22,585,941.14</b>

**General Fund (10)**

	<u>Elementary</u>	<u>Secondary</u>	<u>Federal</u>	<u>Total</u>
<b>1110 Regular Programs</b>				
<b>100 Personnel Services – Salaries</b>				
100 Personnel Services – Salaries	6,113,831.73	5,816,363.02		11,930,194.75
<b>Total Personnel Services – Salaries</b>	<b>\$6,113,831.73</b>	<b>\$5,816,363.02</b>		<b>\$11,930,194.75</b>
<b>200 Personnel Services – Employee Benefits</b>				
210 Group Insurance – Contracted Provider	9,405.76	8,322.20		17,727.96
220 Social Security Contributions	458,198.55	429,619.15		887,817.70
230 PSERS Retirement Contributions	2,115,094.94	1,991,916.53		4,107,011.47
250 Unemployment Compensation	2,190.21	2,190.22		4,380.43
260 Workers' Compensation	46,406.00	46,406.00		92,812.00
270 Group Insurance – Self-Insurance	930,356.98	926,317.10		1,856,674.08
299 All Other Employee Benefits	20,813.33	20,813.34		41,626.67
<b>Total Personnel Services – Employee Benefits</b>	<b>\$3,582,465.77</b>	<b>\$3,425,584.54</b>		<b>\$7,008,050.31</b>
<b>300 Purchased Professional and Technical Services</b>				
322 Professional Educational Services – Ius	48,820.23	48,820.25		97,640.48
329 Professional Educational Services – Other	219,113.69	130,191.20		349,304.89
390 Other Purchased Professional and Technical Services	25,867.73	24,382.30		50,250.03
<b>Total Purchased Professional and Technical Services</b>	<b>\$293,801.65</b>	<b>\$203,393.75</b>		<b>\$497,195.40</b>
<b>400 Purchased Property Services</b>				
430 Repairs and Maintenance Services		2,675.00		2,675.00
440 Rentals	413,715.25	312,685.09		726,400.34
<b>Total Purchased Property Services</b>	<b>\$413,715.25</b>	<b>\$315,360.09</b>		<b>\$729,075.34</b>
<b>500 Other Purchased Services</b>				
510 Student Transportation Services	2,678.42	19,538.21		22,216.63
530 Communications		11.16		11.16
550 Printing and Binding	3,178.45	3,178.45		6,356.90
561 Tuition To Other School Districts Within the State	16,572.64	14,278.49		30,851.13
562 Tuition To Pennsylvania Charter Schools	277,126.40	376,597.00		653,723.40
563 Tuition To Nonpublic Schools	3,555.00	3,555.00		7,110.00
569 Tuition – Other	323.00	323.00		646.00
580 Travel	455.74	246.33		702.07
<b>Total Other Purchased Services</b>	<b>\$303,889.65</b>	<b>\$417,727.64</b>		<b>\$721,617.29</b>
<b>600 Supplies</b>				
610 General Supplies	78,756.42	150,635.44		229,391.86
640 Books and Periodicals	153,921.46	156,162.56		310,084.02
650 Supplies & Fees – Technology Related	87,000.92	264,215.54		351,216.46
<b>Total Supplies</b>	<b>\$319,678.80</b>	<b>\$571,013.54</b>		<b>\$890,692.34</b>
<b>800 Other Objects</b>				
810 Dues and Fees		4,486.93		4,486.93
<b>Total Other Objects</b>		<b>\$4,486.93</b>		<b>\$4,486.93</b>
<b>Total 1110 Regular Programs</b>	<b>\$11,027,382.85</b>	<b>\$10,753,929.51</b>		<b>\$21,781,312.36</b>

General Fund (10)

	<u>Elementary</u>	<u>Secondary</u>	<u>Federal</u>	<u>Total</u>
<b>1190 Federally-Funded Regular Programs</b>				
<b>100 Personnel Services – Salaries</b>				
100 Personnel Services – Salaries			530,563.61	530,563.61
<b>Total Personnel Services – Salaries</b>			<b>\$530,563.61</b>	<b>\$530,563.61</b>
<b>200 Personnel Services – Employee Benefits</b>				
220 Social Security Contributions			32,616.09	32,616.09
230 PSERS Retirement Contributions			151,297.15	151,297.15
270 Group Insurance – Self-Insurance			62,852.22	62,852.22
<b>Total Personnel Services – Employee Benefits</b>			<b>\$246,765.46</b>	<b>\$246,765.46</b>
<b>600 Supplies</b>				
610 General Supplies			27,299.71	27,299.71
<b>Total Supplies</b>			<b>\$27,299.71</b>	<b>\$27,299.71</b>
<b>Total 1190 Federally-Funded Regular Programs</b>			<b>\$804,628.78</b>	<b>\$804,628.78</b>

**General Fund (10)**

<b>1200 Special Programs – Elementary / Secondary</b>	<u>Elementary</u>	<u>Secondary</u>	<u>Federal</u>	<u>Total</u>
<b>100 Personnel Services – Salaries</b>				
100 Personnel Services – Salaries	1,423,882.83	1,079,320.36		2,503,203.19
<b>Total Personnel Services – Salaries</b>	<b>\$1,423,882.83</b>	<b>\$1,079,320.36</b>		<b>\$2,503,203.19</b>
<b>200 Personnel Services – Employee Benefits</b>				
210 Group Insurance – Contracted Provider	2,062.89	1,713.39		3,776.28
220 Social Security Contributions	104,974.89	79,293.57		184,268.46
230 PSERS Retirement Contributions	484,555.75	368,105.61		852,661.36
270 Group Insurance – Self-Insurance	249,156.14	205,545.49		454,701.63
<b>Total Personnel Services – Employee Benefits</b>	<b>\$840,749.67</b>	<b>\$654,658.06</b>		<b>\$1,495,407.73</b>
<b>300 Purchased Professional and Technical Services</b>				
322 Professional Educational Services – Ius	1,340,195.82	1,340,196.00	517,635.00	3,198,026.82
329 Professional Educational Services – Other	5,360.00	5,360.00		10,720.00
350 Security / Safety Services		432.54		432.54
390 Other Purchased Professional and Technical Services	27,121.74	27,121.77		54,243.51
<b>Total Purchased Professional and Technical Services</b>	<b>\$1,372,677.56</b>	<b>\$1,373,110.31</b>	<b>\$517,635.00</b>	<b>\$3,263,422.87</b>
<b>500 Other Purchased Services</b>				
510 Student Transportation Services	(1,461.81)	(1,271.80)		(2,733.61)
561 Tuition To Other School Districts Within the State	6,943.83	6,943.84		13,887.67
562 Tuition To Pennsylvania Charter Schools	8,823.47	128,806.03		137,629.50
563 Tuition To Nonpublic Schools	69,017.41	69,017.43		138,034.84
568 Tuition To Private Residential Rehabilitative Institutions (PRRI) [In-State] and Detention Centers	103,370.18	103,370.25		206,740.43
580 Travel	111.96	212.35		324.31
594 IU Payment By Withholding for Institutionalized Children’s Programs – Special Classes	77,721.50	77,721.50		155,443.00
<b>Total Other Purchased Services</b>	<b>\$264,526.54</b>	<b>\$384,799.60</b>		<b>\$649,326.14</b>
<b>600 Supplies</b>				
610 General Supplies	9,191.17	9,510.45		18,701.62
650 Supplies & Fees – Technology Related	149.99	150.00		299.99
<b>Total Supplies</b>	<b>\$9,341.16</b>	<b>\$9,660.45</b>		<b>\$19,001.61</b>
<b>800 Other Objects</b>				
810 Dues and Fees	(367.10)	(367.10)		(734.20)
<b>Total Other Objects</b>	<b>(\$367.10)</b>	<b>(\$367.10)</b>		<b>(\$734.20)</b>
<b>Total 1200 Special Programs – Elementary / Secondary</b>	<b>\$3,910,810.66</b>	<b>\$3,501,181.68</b>	<b>\$517,635.00</b>	<b>\$7,929,627.34</b>

**General Fund (10)**

**1210 Life Skills Support**

	<u>Elementary</u>	<u>Secondary</u>	<u>Federal</u>	<u>Total</u>
<b>100 Personnel Services – Salaries</b>				
100 Personnel Services – Salaries	33,543.37	103,414.52		136,957.89
<b>Total Personnel Services – Salaries</b>	<b>\$33,543.37</b>	<b>\$103,414.52</b>		<b>\$136,957.89</b>
<b>200 Personnel Services – Employee Benefits</b>				
210 Group Insurance – Contracted Provider	52.93	127.38		180.31
220 Social Security Contributions	2,464.46	7,733.42		10,197.88
230 PSERS Retirement Contributions	11,510.37	35,489.76		47,000.13
270 Group Insurance – Self-Insurance	7,844.78	13,999.61		21,844.39
<b>Total Personnel Services – Employee Benefits</b>	<b>\$21,872.54</b>	<b>\$57,350.17</b>		<b>\$79,222.71</b>
<b>500 Other Purchased Services</b>				
561 Tuition To Other School Districts Within the State	6,943.83	6,943.84		13,887.67
<b>Total Other Purchased Services</b>	<b>\$6,943.83</b>	<b>\$6,943.84</b>		<b>\$13,887.67</b>
<b>600 Supplies</b>				
610 General Supplies		570.57		570.57
<b>Total Supplies</b>		<b>\$570.57</b>		<b>\$570.57</b>
<b>Total 1210 Life Skills Support</b>	<b>\$62,359.74</b>	<b>\$168,279.10</b>		<b>\$230,638.84</b>

**General Fund (10)**

	<u>Elementary</u>	<u>Secondary</u>	<u>Federal</u>	<u>Total</u>
<b>1220 Sensory Support</b>				
<b>100 Personnel Services – Salaries</b>				
100 Personnel Services – Salaries	262,161.78	30,947.00		293,108.78
<b>Total Personnel Services – Salaries</b>	<b>\$262,161.78</b>	<b>\$30,947.00</b>		<b>\$293,108.78</b>
<b>200 Personnel Services – Employee Benefits</b>				
210 Group Insurance – Contracted Provider	370.89	53.06		423.95
220 Social Security Contributions	19,624.90	2,329.45		21,954.35
230 PSERS Retirement Contributions	89,927.85	10,585.63		100,513.48
270 Group Insurance – Self-Insurance	33,200.79	3,077.41		36,278.20
<b>Total Personnel Services – Employee Benefits</b>	<b>\$143,124.43</b>	<b>\$16,045.55</b>		<b>\$159,169.98</b>
<b>500 Other Purchased Services</b>				
580 Travel	22.60	22.61		45.21
<b>Total Other Purchased Services</b>	<b>\$22.60</b>	<b>\$22.61</b>		<b>\$45.21</b>
<b>600 Supplies</b>				
610 General Supplies	408.91	408.92		817.83
<b>Total Supplies</b>	<b>\$408.91</b>	<b>\$408.92</b>		<b>\$817.83</b>
<b>Total 1220 Sensory Support</b>	<b>\$405,717.72</b>	<b>\$47,424.08</b>		<b>\$453,141.80</b>

**General Fund (10)**

**1230 Emotional Support**

	<u>Elementary</u>	<u>Secondary</u>	<u>Federal</u>	<u>Total</u>
<b>100 Personnel Services – Salaries</b>				
100 Personnel Services – Salaries	57,793.91	124,544.14		182,338.05
<b>Total Personnel Services – Salaries</b>	<b>\$57,793.91</b>	<b>\$124,544.14</b>		<b>\$182,338.05</b>
<b>200 Personnel Services – Employee Benefits</b>				
210 Group Insurance – Contracted Provider	34.48	124.89		159.37
220 Social Security Contributions	4,183.59	9,091.08		13,274.67
230 PSERS Retirement Contributions	19,802.88	42,708.40		62,511.28
270 Group Insurance – Self-Insurance	11,408.71	25,655.31		37,064.02
<b>Total Personnel Services – Employee Benefits</b>	<b>\$35,429.66</b>	<b>\$77,579.68</b>		<b>\$113,009.34</b>
<b>Total 1230 Emotional Support</b>	<b>\$93,223.57</b>	<b>\$202,123.82</b>		<b>\$295,347.39</b>

**General Fund (10)**

	<u>Elementary</u>	<u>Secondary</u>	<u>Federal</u>	<u>Total</u>
<b>1240 Academic Support</b>				
<b>100 Personnel Services – Salaries</b>				
100 Personnel Services – Salaries	984,899.93	765,498.72		1,750,398.65
<b>Total Personnel Services – Salaries</b>	<b>\$984,899.93</b>	<b>\$765,498.72</b>		<b>\$1,750,398.65</b>
<b>200 Personnel Services – Employee Benefits</b>				
210 Group Insurance – Contracted Provider	1,563.19	1,193.33		2,756.52
220 Social Security Contributions	72,382.53	56,302.30		128,684.83
230 PSERS Retirement Contributions	335,224.10	260,784.72		596,008.82
270 Group Insurance – Self-Insurance	180,081.48	137,340.46		317,421.94
<b>Total Personnel Services – Employee Benefits</b>	<b>\$589,251.30</b>	<b>\$455,620.81</b>		<b>\$1,044,872.11</b>
<b>300 Purchased Professional and Technical Services</b>				
350 Security / Safety Services		432.54		432.54
<b>Total Purchased Professional and Technical Services</b>		<b>\$432.54</b>		<b>\$432.54</b>
<b>500 Other Purchased Services</b>				
510 Student Transportation Services	332.25	522.26		854.51
580 Travel	89.36	189.74		279.10
<b>Total Other Purchased Services</b>	<b>\$421.61</b>	<b>\$712.00</b>		<b>\$1,133.61</b>
<b>600 Supplies</b>				
610 General Supplies	2,536.01	2,284.71		4,820.72
<b>Total Supplies</b>	<b>\$2,536.01</b>	<b>\$2,284.71</b>		<b>\$4,820.72</b>
<b>800 Other Objects</b>				
810 Dues and Fees	(367.10)	(367.10)		(734.20)
<b>Total Other Objects</b>	<b>(\$367.10)</b>	<b>(\$367.10)</b>		<b>(\$734.20)</b>
<b>Total 1240 Academic Support</b>	<b>\$1,576,741.75</b>	<b>\$1,224,181.68</b>		<b>\$2,800,923.43</b>

**General Fund (10)**

	<u>Elementary</u>	<u>Secondary</u>	<u>Federal</u>	<u>Total</u>
<b>1241 Learning Support – Public</b>				
<b>100 Personnel Services – Salaries</b>				
100 Personnel Services – Salaries	918,412.85	707,540.58		1,625,953.43
<b>Total Personnel Services – Salaries</b>	<b>\$918,412.85</b>	<b>\$707,540.58</b>		<b>\$1,625,953.43</b>
<b>200 Personnel Services – Employee Benefits</b>				
210 Group Insurance – Contracted Provider	1,488.87	1,087.35		2,576.22
220 Social Security Contributions	67,297.53	52,136.49		119,434.02
230 PSERS Retirement Contributions	312,917.73	240,993.08		553,910.81
270 Group Insurance – Self-Insurance	179,872.42	127,255.93		307,128.35
<b>Total Personnel Services – Employee Benefits</b>	<b>\$561,576.55</b>	<b>\$421,472.85</b>		<b>\$983,049.40</b>
<b>300 Purchased Professional and Technical Services</b>				
350 Security / Safety Services		432.54		432.54
<b>Total Purchased Professional and Technical Services</b>		<b>\$432.54</b>		<b>\$432.54</b>
<b>500 Other Purchased Services</b>				
580 Travel	89.36	189.74		279.10
<b>Total Other Purchased Services</b>	<b>\$89.36</b>	<b>\$189.74</b>		<b>\$279.10</b>
<b>600 Supplies</b>				
610 General Supplies	1,345.97	1,218.93		2,564.90
<b>Total Supplies</b>	<b>\$1,345.97</b>	<b>\$1,218.93</b>		<b>\$2,564.90</b>
<b>Total 1241 Learning Support – Public</b>	<b>\$1,481,424.73</b>	<b>\$1,130,854.64</b>		<b>\$2,612,279.37</b>

**General Fund (10)**

	<u>Elementary</u>	<u>Secondary</u>	<u>Federal</u>	<u>Total</u>
<b>1243 Gifted Support</b>				
<b>100 Personnel Services – Salaries</b>				
100 Personnel Services – Salaries	66,487.08	57,958.14		124,445.22
<b>Total Personnel Services – Salaries</b>	<b>\$66,487.08</b>	<b>\$57,958.14</b>		<b>\$124,445.22</b>
<b>200 Personnel Services – Employee Benefits</b>				
210 Group Insurance – Contracted Provider	74.32	105.98		180.30
220 Social Security Contributions	5,085.00	4,165.81		9,250.81
230 PSERS Retirement Contributions	22,306.37	19,791.64		42,098.01
270 Group Insurance – Self-Insurance	209.06	10,084.53		10,293.59
<b>Total Personnel Services – Employee Benefits</b>	<b>\$27,674.75</b>	<b>\$34,147.96</b>		<b>\$61,822.71</b>
<b>500 Other Purchased Services</b>				
510 Student Transportation Services	332.25	522.26		854.51
<b>Total Other Purchased Services</b>	<b>\$332.25</b>	<b>\$522.26</b>		<b>\$854.51</b>
<b>600 Supplies</b>				
610 General Supplies	1,190.04	1,065.78		2,255.82
<b>Total Supplies</b>	<b>\$1,190.04</b>	<b>\$1,065.78</b>		<b>\$2,255.82</b>
<b>800 Other Objects</b>				
810 Dues and Fees	(367.10)	(367.10)		(734.20)
<b>Total Other Objects</b>	<b>(\$367.10)</b>	<b>(\$367.10)</b>		<b>(\$734.20)</b>
<b>Total 1243 Gifted Support</b>	<b>\$95,317.02</b>	<b>\$93,327.04</b>		<b>\$188,644.06</b>

General Fund (10)

1260 Physical Support

300 Purchased Professional and Technical Services

390 Other Purchased Professional and Technical Services

**Total Purchased Professional and Technical Services**

**Total 1260 Physical Support**

	<u>Elementary</u>	<u>Secondary</u>	<u>Federal</u>	<u>Total</u>
	27,121.74	27,121.77		54,243.51
	<b>\$27,121.74</b>	<b>\$27,121.77</b>		<b>\$54,243.51</b>
	<b>\$27,121.74</b>	<b>\$27,121.77</b>		<b>\$54,243.51</b>

**General Fund (10)**

	<u>Elementary</u>	<u>Secondary</u>	<u>Federal</u>	<u>Total</u>
<b>1290 Special Programs - Other Support</b>				
<b>100 Personnel Services – Salaries</b>				
100 Personnel Services – Salaries	85,483.84	54,915.98		140,399.82
<b>Total Personnel Services – Salaries</b>	<b>\$85,483.84</b>	<b>\$54,915.98</b>		<b>\$140,399.82</b>
<b>200 Personnel Services – Employee Benefits</b>				
210 Group Insurance – Contracted Provider	41.40	214.73		256.13
220 Social Security Contributions	6,319.41	3,837.32		10,156.73
230 PSERS Retirement Contributions	28,090.55	18,537.10		46,627.65
270 Group Insurance – Self-Insurance	16,620.38	25,472.70		42,093.08
<b>Total Personnel Services – Employee Benefits</b>	<b>\$51,071.74</b>	<b>\$48,061.85</b>		<b>\$99,133.59</b>
<b>300 Purchased Professional and Technical Services</b>				
322 Professional Educational Services – Ius	1,340,195.82	1,340,196.00	517,635.00	3,198,026.82
329 Professional Educational Services – Other	5,360.00	5,360.00		10,720.00
<b>Total Purchased Professional and Technical Services</b>	<b>\$1,345,555.82</b>	<b>\$1,345,556.00</b>	<b>\$517,635.00</b>	<b>\$3,208,746.82</b>
<b>500 Other Purchased Services</b>				
510 Student Transportation Services	(1,794.06)	(1,794.06)		(3,588.12)
562 Tuition To Pennsylvania Charter Schools	8,823.47	128,806.03		137,629.50
563 Tuition To Nonpublic Schools	69,017.41	69,017.43		138,034.84
568 Tuition To Private Residential Rehabilitative Institutions (PRRI) [In-State] and Detention Centers	103,370.18	103,370.25		206,740.43
594 IU Payment By Withholding for Institutionalized Children’s Programs – Special Classes	77,721.50	77,721.50		155,443.00
<b>Total Other Purchased Services</b>	<b>\$257,138.50</b>	<b>\$377,121.15</b>		<b>\$634,259.65</b>
<b>600 Supplies</b>				
610 General Supplies	6,246.25	6,246.25		12,492.50
650 Supplies & Fees – Technology Related	149.99	150.00		299.99
<b>Total Supplies</b>	<b>\$6,396.24</b>	<b>\$6,396.25</b>		<b>\$12,792.49</b>
<b>Total 1290 Special Programs - Other Support</b>	<b>\$1,745,646.14</b>	<b>\$1,832,051.23</b>	<b>\$517,635.00</b>	<b>\$4,095,332.37</b>

**General Fund (10)**

	<u>Elementary</u>	<u>Secondary</u>	<u>Federal</u>	<u>Total</u>
<b>1300 Vocational Education</b>				
<b>100 Personnel Services – Salaries</b>				
100 Personnel Services – Salaries		242,485.58		242,485.58
<b>Total Personnel Services – Salaries</b>		<b>\$242,485.58</b>		<b>\$242,485.58</b>
<b>200 Personnel Services – Employee Benefits</b>				
210 Group Insurance – Contracted Provider		286.29		286.29
220 Social Security Contributions		18,023.07		18,023.07
230 PSERS Retirement Contributions		82,355.13		82,355.13
270 Group Insurance – Self-Insurance		38,576.87		38,576.87
<b>Total Personnel Services – Employee Benefits</b>		<b>\$139,241.36</b>		<b>\$139,241.36</b>
<b>500 Other Purchased Services</b>				
564 Tuition To Career and Technology Centers		887,762.16		887,762.16
580 Travel		380.00		380.00
<b>Total Other Purchased Services</b>		<b>\$888,142.16</b>		<b>\$888,142.16</b>
<b>600 Supplies</b>				
610 General Supplies		17,096.90		17,096.90
<b>Total Supplies</b>		<b>\$17,096.90</b>		<b>\$17,096.90</b>
<b>800 Other Objects</b>				
810 Dues and Fees		3,316.25		3,316.25
<b>Total Other Objects</b>		<b>\$3,316.25</b>		<b>\$3,316.25</b>
<b>Total 1300 Vocational Education</b>		<b>\$1,290,282.25</b>		<b>\$1,290,282.25</b>

**General Fund (10)**

	<u>Elementary</u>	<u>Secondary</u>	<u>Federal</u>	<u>Total</u>
<b>1400 Other Instructional Programs – Elementary / Secondary</b>				
<b>100 Personnel Services – Salaries</b>				
100 Personnel Services – Salaries	50.22	1,657.26		1,707.48
<b>Total Personnel Services – Salaries</b>	<b>\$50.22</b>	<b>\$1,657.26</b>		<b>\$1,707.48</b>
<b>200 Personnel Services – Employee Benefits</b>				
220 Social Security Contributions	3.70	123.78		127.48
230 PSERS Retirement Contributions	17.22	568.27		585.49
<b>Total Personnel Services – Employee Benefits</b>	<b>\$20.92</b>	<b>\$692.05</b>		<b>\$712.97</b>
<b>300 Purchased Professional and Technical Services</b>				
390 Other Purchased Professional and Technical Services	1,357.55	2,702.29		4,059.84
<b>Total Purchased Professional and Technical Services</b>	<b>\$1,357.55</b>	<b>\$2,702.29</b>		<b>\$4,059.84</b>
<b>500 Other Purchased Services</b>				
568 Tuition To Private Residential Rehabilitative Institutions (PRRI) [In-State] and Detention Centers	45,565.86	45,565.91		91,131.77
<b>Total Other Purchased Services</b>	<b>\$45,565.86</b>	<b>\$45,565.91</b>		<b>\$91,131.77</b>
<b>Total 1400 Other Instructional Programs – Elementary / Secondary</b>	<b>\$46,994.55</b>	<b>\$50,617.51</b>		<b>\$97,612.06</b>

**General Fund (10)**

	<u>Elementary</u>	<u>Secondary</u>	<u>Federal</u>	<u>Total</u>
<b>1430 Homebound Instruction</b>				
<b>100 Personnel Services – Salaries</b>				
100 Personnel Services – Salaries	50.22	1,657.26		1,707.48
<b>Total Personnel Services – Salaries</b>	<b>\$50.22</b>	<b>\$1,657.26</b>		<b>\$1,707.48</b>
<b>200 Personnel Services – Employee Benefits</b>				
220 Social Security Contributions	3.70	123.78		127.48
230 PSERS Retirement Contributions	17.22	568.27		585.49
<b>Total Personnel Services – Employee Benefits</b>	<b>\$20.92</b>	<b>\$692.05</b>		<b>\$712.97</b>
<b>300 Purchased Professional and Technical Services</b>				
390 Other Purchased Professional and Technical Services	1,357.55	2,702.29		4,059.84
<b>Total Purchased Professional and Technical Services</b>	<b>\$1,357.55</b>	<b>\$2,702.29</b>		<b>\$4,059.84</b>
<b>500 Other Purchased Services</b>				
568 Tuition To Private Residential Rehabilitative Institutions (PRRI) [In-State] and Detention Centers	3,927.01	3,927.01		7,854.02
<b>Total Other Purchased Services</b>	<b>\$3,927.01</b>	<b>\$3,927.01</b>		<b>\$7,854.02</b>
<b>Total 1430 Homebound Instruction</b>	<b>\$5,355.70</b>	<b>\$8,978.61</b>		<b>\$14,334.31</b>

General Fund (10)

	<u>Elementary</u>	<u>Secondary</u>	<u>Federal</u>	<u>Total</u>
<b>1440 Alternative Regular Education Programs</b>				
<b>500 Other Purchased Services</b>				
568 Tuition To Private Residential Rehabilitative Institutions (PRRI) [In-State] and Detention Centers	41,638.85	41,638.90		83,277.75
<b>Total Other Purchased Services</b>	<b>\$41,638.85</b>	<b>\$41,638.90</b>		<b>\$83,277.75</b>
<b>Total 1440 Alternative Regular Education Programs</b>	<b>\$41,638.85</b>	<b>\$41,638.90</b>		<b>\$83,277.75</b>

General Fund (10)

	<u>Elementary</u>	<u>Secondary</u>	<u>Federal</u>	<u>Total</u>
<b>1442 Alternative Education Programs</b>				
<b>500 Other Purchased Services</b>				
568 Tuition To Private Residential Rehabilitative Institutions (PRRI) [In-State] and Detention Centers	41,638.85	41,638.90		83,277.75
<b>Total Other Purchased Services</b>	<b>\$41,638.85</b>	<b>\$41,638.90</b>		<b>\$83,277.75</b>
<b>Total 1442 Alternative Education Programs</b>	<b>\$41,638.85</b>	<b>\$41,638.90</b>		<b>\$83,277.75</b>

General Fund (10)

1500 Nonpublic School Programs

300 Purchased Professional and Technical Services

360 Employee Training and Development Services

**Total Purchased Professional and Technical Services**

600 Supplies

610 General Supplies

650 Supplies & Fees – Technology Related

**Total Supplies**

**Total 1500 Nonpublic School Programs**

	<u>Elementary</u>	<u>Secondary</u>	<u>Federal</u>	<u>Total</u>
			1,380.00	1,380.00
			<b>\$1,380.00</b>	<b>\$1,380.00</b>
			35,841.41	35,841.41
			3,180.50	3,180.50
			<b>\$39,021.91</b>	<b>\$39,021.91</b>
			<b>\$40,401.91</b>	<b>\$40,401.91</b>

General Fund (10)

1800 Pre-Kindergarten

Elementary

Secondary

Federal

Total

100 Personnel Services – Salaries

100 Personnel Services – Salaries

48,234.63

**Total Personnel Services – Salaries**

**\$48,234.63**

200 Personnel Services – Employee Benefits

210 Group Insurance – Contracted Provider

105.99

220 Social Security Contributions

3,570.81

230 PSERS Retirement Contributions

16,455.46

270 Group Insurance – Self-Insurance

9,722.82

**Total Personnel Services – Employee Benefits**

**\$29,855.08**

**Total 1800 Pre-Kindergarten**

**\$78,089.71**

General Fund (10)

1801 Pre-K Instruction

Elementary

Secondary

Federal

Total

100 Personnel Services – Salaries

100 Personnel Services – Salaries

48,234.63

**Total Personnel Services – Salaries**

**\$48,234.63**

200 Personnel Services – Employee Benefits

210 Group Insurance – Contracted Provider

105.99

220 Social Security Contributions

3,570.81

230 PSERS Retirement Contributions

16,455.46

270 Group Insurance – Self-Insurance

9,722.82

**Total Personnel Services – Employee Benefits**

**\$29,855.08**

**Total 1801 Pre-K Instruction**

**\$78,089.71**

General Fund (10)

2000 Support Services

Total

100 Personnel Services – Salaries

100 Personnel Services – Salaries 5,709,850.61

Total Personnel Services – Salaries \$5,709,850.61

200 Personnel Services – Employee Benefits

210 Group Insurance – Contracted Provider 40,467.04

220 Social Security Contributions 420,533.25

230 PSERS Retirement Contributions 1,932,869.63

240 Tuition Reimbursement 405,450.41

270 Group Insurance – Self-Insurance 973,554.26

299 All Other Employee Benefits 24,000.00

Total Personnel Services – Employee Benefits \$3,796,874.59

300 Purchased Professional and Technical Services

310 Official / Administrative Services 75,802.82

322 Professional Educational Services – lus 58,905.26

329 Professional Educational Services – Other 5,264.20

330 Other Professional Services 96,498.78

340 Technical Services 98,261.81

350 Security / Safety Services 80,677.76

360 Employee Training and Development Services 76,807.70

390 Other Purchased Professional and Technical Services 70,120.93

Total Purchased Professional and Technical Services \$562,339.26

400 Purchased Property Services

410 Cleaning Services 104,348.24

420 Utility Services 122,621.16

430 Repairs and Maintenance Services 259,314.69

440 Rentals 50,513.21

460 Extermination Services 4,530.00

Total Purchased Property Services \$541,327.30

500 Other Purchased Services

513 Contracted Carriers 2,994,749.99

516 Student Transportation Services From the IU 11,693.22

520 Insurance – General 18,224.00

522 Automotive Liability Insurance 10,609.50

523 General Property and Liability Insurance 152,450.00

529 Other Insurance 992.40

530 Communications 74,458.87

549 Other Advertising/Public Relations 5,659.56

550 Printing and Binding 14,081.68

580 Travel 27,620.65

595 IU Payments By Withholding 29,813.86

Total Other Purchased Services \$3,340,353.73

600 Supplies

610 General Supplies 424,650.14

620 Energy 629,437.03

LEA : 113364403 Manheim Central SD

Printed 1/4/2021 10:26:38 AM

**General Fund (10)**

**2000 Support Services**

**Total**

**600 Supplies**

640 Books and Periodicals	52,723.85
650 Supplies & Fees – Technology Related	393,092.50

<b>Total Supplies</b>	<b>\$1,499,903.52</b>
-----------------------	-----------------------

**700 Property**

752 Capital Equipment – Original and Additional	22,631.28
766 Capitalized Technology Equipment – Replacement	764.25

<b>Total Property</b>	<b>\$23,395.53</b>
-----------------------	--------------------

**800 Other Objects**

810 Dues and Fees	73,919.94
820 Claims and Judgments Against the LEA	2,428.33

<b>Total Other Objects</b>	<b>\$76,348.27</b>
----------------------------	--------------------

<b>Total 2000 Support Services</b>	<b>\$15,550,392.81</b>
------------------------------------	------------------------

**General Fund (10)**

	<u>Elementary</u>	<u>Secondary</u>	<u>Federal</u>	<u>Total</u>
<b>2100 Support Services – Students</b>				
<b>100 Personnel Services – Salaries</b>				
100 Personnel Services – Salaries	418,887.51	439,007.32		969,037.10
<b>Total Personnel Services – Salaries</b>	<b>\$418,887.51</b>	<b>\$439,007.32</b>		<b>\$969,037.10</b>
<b>200 Personnel Services – Employee Benefits</b>				
210 Group Insurance – Contracted Provider	583.12	612.26		1,377.63
220 Social Security Contributions	31,101.82	32,708.54		71,924.50
230 PSERS Retirement Contributions	143,693.32	150,022.08		331,674.93
270 Group Insurance – Self-Insurance	68,652.42	56,845.96		135,582.91
<b>Total Personnel Services – Employee Benefits</b>	<b>\$244,030.68</b>	<b>\$240,188.84</b>		<b>\$540,559.97</b>
<b>300 Purchased Professional and Technical Services</b>				
390 Other Purchased Professional and Technical Services	20,408.25	33,213.25	12,195.00	65,816.50
<b>Total Purchased Professional and Technical Services</b>	<b>\$20,408.25</b>	<b>\$33,213.25</b>	<b>\$12,195.00</b>	<b>\$65,816.50</b>
<b>500 Other Purchased Services</b>				
530 Communications				284.52
580 Travel	429.60	478.36		1,391.92
<b>Total Other Purchased Services</b>	<b>\$429.60</b>	<b>\$478.36</b>		<b>\$1,676.44</b>
<b>600 Supplies</b>				
610 General Supplies	2,707.15	5,983.92	1,000.00	9,691.07
640 Books and Periodicals	25.05	25.06		50.11
<b>Total Supplies</b>	<b>\$2,732.20</b>	<b>\$6,008.98</b>	<b>\$1,000.00</b>	<b>\$9,741.18</b>
<b>800 Other Objects</b>				
810 Dues and Fees	390.00	390.00		780.00
<b>Total Other Objects</b>	<b>\$390.00</b>	<b>\$390.00</b>		<b>\$780.00</b>
<b>Total 2100 Support Services – Students</b>	<b>\$686,878.24</b>	<b>\$719,286.75</b>	<b>\$13,195.00</b>	<b>\$1,587,611.19</b>

**General Fund (10)**

	<u>Elementary</u>	<u>Secondary</u>	<u>Federal</u>	<u>Total</u>
<b>2110 Supervision of Student Services</b>				
<b>100 Personnel Services – Salaries</b>				
100 Personnel Services – Salaries	14,103.01	14,103.01		28,206.02
<b>Total Personnel Services – Salaries</b>	<b>\$14,103.01</b>	<b>\$14,103.01</b>		<b>\$28,206.02</b>
<b>200 Personnel Services – Employee Benefits</b>				
210 Group Insurance – Contracted Provider	31.98	32.11		64.09
220 Social Security Contributions	1,047.96	1,047.84		2,095.80
230 PSERS Retirement Contributions	4,826.32	4,826.50		9,652.82
270 Group Insurance – Self-Insurance	2,436.18	2,436.21		4,872.39
<b>Total Personnel Services – Employee Benefits</b>	<b>\$8,342.44</b>	<b>\$8,342.66</b>		<b>\$16,685.10</b>
<b>500 Other Purchased Services</b>				
580 Travel	309.96	309.98		619.94
<b>Total Other Purchased Services</b>	<b>\$309.96</b>	<b>\$309.98</b>		<b>\$619.94</b>
<b>600 Supplies</b>				
610 General Supplies	814.14	814.15		1,628.29
640 Books and Periodicals	25.05	25.06		50.11
<b>Total Supplies</b>	<b>\$839.19</b>	<b>\$839.21</b>		<b>\$1,678.40</b>
<b>800 Other Objects</b>				
810 Dues and Fees	287.50	287.50		575.00
<b>Total Other Objects</b>	<b>\$287.50</b>	<b>\$287.50</b>		<b>\$575.00</b>
<b>Total 2110 Supervision of Student Services</b>	<b>\$23,882.10</b>	<b>\$23,882.36</b>		<b>\$47,764.46</b>

**General Fund (10)**

	<u>Elementary</u>	<u>Secondary</u>	<u>Federal</u>	<u>Total</u>
<b>2111 Supervision of Student Services – Head of Component</b>				
<b>100 Personnel Services – Salaries</b>				
100 Personnel Services – Salaries	14,103.01	14,103.01		28,206.02
<b>Total Personnel Services – Salaries</b>	<b>\$14,103.01</b>	<b>\$14,103.01</b>		<b>\$28,206.02</b>
<b>200 Personnel Services – Employee Benefits</b>				
210 Group Insurance – Contracted Provider	31.98	32.11		64.09
220 Social Security Contributions	1,047.96	1,047.84		2,095.80
230 PSERS Retirement Contributions	4,826.32	4,826.50		9,652.82
270 Group Insurance – Self-Insurance	2,436.18	2,436.21		4,872.39
<b>Total Personnel Services – Employee Benefits</b>	<b>\$8,342.44</b>	<b>\$8,342.66</b>		<b>\$16,685.10</b>
<b>500 Other Purchased Services</b>				
580 Travel	309.96	309.98		619.94
<b>Total Other Purchased Services</b>	<b>\$309.96</b>	<b>\$309.98</b>		<b>\$619.94</b>
<b>600 Supplies</b>				
610 General Supplies	814.14	814.15		1,628.29
640 Books and Periodicals	25.05	25.06		50.11
<b>Total Supplies</b>	<b>\$839.19</b>	<b>\$839.21</b>		<b>\$1,678.40</b>
<b>800 Other Objects</b>				
810 Dues and Fees	287.50	287.50		575.00
<b>Total Other Objects</b>	<b>\$287.50</b>	<b>\$287.50</b>		<b>\$575.00</b>
<b>Total 2111 Supervision of Student Services – Head of Component</b>	<b>\$23,882.10</b>	<b>\$23,882.36</b>		<b>\$47,764.46</b>

General Fund (10)

	<u>Elementary</u>	<u>Secondary</u>	<u>Federal</u>	<u>Total</u>
<b>2120 Guidance Services</b>				
<b>100 Personnel Services – Salaries</b>				
100 Personnel Services – Salaries	279,855.40	330,904.58		610,759.98
<b>Total Personnel Services – Salaries</b>	<b>\$279,855.40</b>	<b>\$330,904.58</b>		<b>\$610,759.98</b>
<b>200 Personnel Services – Employee Benefits</b>				
210 Group Insurance – Contracted Provider	392.22	452.77		844.99
220 Social Security Contributions	20,796.33	24,564.40		45,360.73
230 PSERS Retirement Contributions	95,998.56	113,453.83		209,452.39
270 Group Insurance – Self-Insurance	44,847.10	47,286.55		92,133.65
<b>Total Personnel Services – Employee Benefits</b>	<b>\$162,034.21</b>	<b>\$185,757.55</b>		<b>\$347,791.76</b>
<b>300 Purchased Professional and Technical Services</b>				
390 Other Purchased Professional and Technical Services	20,408.25	33,213.25	12,195.00	65,816.50
<b>Total Purchased Professional and Technical Services</b>	<b>\$20,408.25</b>	<b>\$33,213.25</b>	<b>\$12,195.00</b>	<b>\$65,816.50</b>
<b>500 Other Purchased Services</b>				
580 Travel		48.72		48.72
<b>Total Other Purchased Services</b>		<b>\$48.72</b>		<b>\$48.72</b>
<b>600 Supplies</b>				
610 General Supplies		3,276.74		3,276.74
<b>Total Supplies</b>		<b>\$3,276.74</b>		<b>\$3,276.74</b>
<b>800 Other Objects</b>				
810 Dues and Fees	102.50	102.50		205.00
<b>Total Other Objects</b>	<b>\$102.50</b>	<b>\$102.50</b>		<b>\$205.00</b>
<b>Total 2120 Guidance Services</b>	<b>\$462,400.36</b>	<b>\$553,303.34</b>	<b>\$12,195.00</b>	<b>\$1,027,898.70</b>

**General Fund (10)**

	<u>Elementary</u>	<u>Secondary</u>	<u>Federal</u>	<u>Total</u>
<b>2140 Psychological Services</b>				
<b>100 Personnel Services – Salaries</b>				
100 Personnel Services – Salaries	124,929.10	93,999.73		218,928.83
<b>Total Personnel Services – Salaries</b>	<b>\$124,929.10</b>	<b>\$93,999.73</b>		<b>\$218,928.83</b>
<b>200 Personnel Services – Employee Benefits</b>				
210 Group Insurance – Contracted Provider	158.92	127.38		286.30
220 Social Security Contributions	9,257.53	7,096.30		16,353.83
230 PSERS Retirement Contributions	42,868.44	31,741.75		74,610.19
270 Group Insurance – Self-Insurance	21,369.14	7,123.20		28,492.34
<b>Total Personnel Services – Employee Benefits</b>	<b>\$73,654.03</b>	<b>\$46,088.63</b>		<b>\$119,742.66</b>
<b>500 Other Purchased Services</b>				
580 Travel	119.64	119.66		239.30
<b>Total Other Purchased Services</b>	<b>\$119.64</b>	<b>\$119.66</b>		<b>\$239.30</b>
<b>600 Supplies</b>				
610 General Supplies	1,893.01	1,893.03		3,786.04
<b>Total Supplies</b>	<b>\$1,893.01</b>	<b>\$1,893.03</b>		<b>\$3,786.04</b>
<b>Total 2140 Psychological Services</b>	<b>\$200,595.78</b>	<b>\$142,101.05</b>		<b>\$342,696.83</b>

General Fund (10)

2160 Social Work Services

Elementary

Secondary

Federal

Total

100 Personnel Services – Salaries

100 Personnel Services – Salaries

63,232.51

**Total Personnel Services – Salaries**

**\$63,232.51**

200 Personnel Services – Employee Benefits

210 Group Insurance – Contracted Provider

105.99

220 Social Security Contributions

4,711.69

230 PSERS Retirement Contributions

21,629.69

**Total Personnel Services – Employee Benefits**

**\$26,447.37**

500 Other Purchased Services

580 Travel

483.96

**Total Other Purchased Services**

**\$483.96**

600 Supplies

610 General Supplies

1,000.00

1,000.00

**Total Supplies**

**\$1,000.00**

**\$1,000.00**

**Total 2160 Social Work Services**

**\$1,000.00**

**\$91,163.84**

General Fund (10)

2170 Student Accounting Services

Elementary

Secondary

Federal

Total

100 Personnel Services – Salaries

100 Personnel Services – Salaries

47,909.76

**Total Personnel Services – Salaries**

**\$47,909.76**

200 Personnel Services – Employee Benefits

210 Group Insurance – Contracted Provider

76.26

220 Social Security Contributions

3,402.45

230 PSERS Retirement Contributions

16,329.84

270 Group Insurance – Self-Insurance

10,084.53

**Total Personnel Services – Employee Benefits**

**\$29,893.08**

500 Other Purchased Services

530 Communications

284.52

**Total Other Purchased Services**

**\$284.52**

**Total 2170 Student Accounting Services**

**\$78,087.36**

**General Fund (10)**

	<u>Elementary</u>	<u>Secondary</u>	<u>Federal</u>	<u>Total</u>
<b>2200 Support Services – Instructional Staff</b>				
<b>100 Personnel Services – Salaries</b>				
100 Personnel Services – Salaries	411,465.00	352,453.02		763,918.02
<b>Total Personnel Services – Salaries</b>	<b>\$411,465.00</b>	<b>\$352,453.02</b>		<b>\$763,918.02</b>
<b>200 Personnel Services – Employee Benefits</b>				
210 Group Insurance – Contracted Provider	731.00	635.71		1,366.71
220 Social Security Contributions	30,803.74	26,020.26		56,824.00
230 PSERS Retirement Contributions	139,948.65	120,191.61		260,140.26
240 Tuition Reimbursement	190,186.69	127,572.72		317,759.41
270 Group Insurance – Self-Insurance	38,681.96	51,484.98		90,166.94
299 All Other Employee Benefits	1,500.00	1,500.00		3,000.00
<b>Total Personnel Services – Employee Benefits</b>	<b>\$401,852.04</b>	<b>\$327,405.28</b>		<b>\$729,257.32</b>
<b>300 Purchased Professional and Technical Services</b>				
322 Professional Educational Services – Ius	29,452.62	29,452.64		58,905.26
360 Employee Training and Development Services	30,360.54	31,165.55	8,130.01	69,656.10
390 Other Purchased Professional and Technical Services		295.00		295.00
<b>Total Purchased Professional and Technical Services</b>	<b>\$59,813.16</b>	<b>\$60,913.19</b>	<b>\$8,130.01</b>	<b>\$128,856.36</b>
<b>500 Other Purchased Services</b>				
580 Travel	6,439.34	8,855.30		15,294.64
<b>Total Other Purchased Services</b>	<b>\$6,439.34</b>	<b>\$8,855.30</b>		<b>\$15,294.64</b>
<b>600 Supplies</b>				
610 General Supplies	7,571.25	7,508.11		15,079.36
640 Books and Periodicals	19,884.40	32,353.29		52,237.69
<b>Total Supplies</b>	<b>\$27,455.65</b>	<b>\$39,861.40</b>		<b>\$67,317.05</b>
<b>800 Other Objects</b>				
810 Dues and Fees	5,729.94	4,558.07		10,288.01
<b>Total Other Objects</b>	<b>\$5,729.94</b>	<b>\$4,558.07</b>		<b>\$10,288.01</b>
<b>Total 2200 Support Services – Instructional Staff</b>	<b>\$912,755.13</b>	<b>\$794,046.26</b>	<b>\$8,130.01</b>	<b>\$1,714,931.40</b>

**General Fund (10)**

<b>2220 Technology Support Services</b>	<b><u>Elementary</u></b>	<b><u>Secondary</u></b>	<b><u>Federal</u></b>	<b><u>Total</u></b>
<b>100 Personnel Services – Salaries</b>				
100 Personnel Services – Salaries	39,980.45	39,980.70		79,961.15
<b>Total Personnel Services – Salaries</b>	<b>\$39,980.45</b>	<b>\$39,980.70</b>		<b>\$79,961.15</b>
<b>200 Personnel Services – Employee Benefits</b>				
210 Group Insurance – Contracted Provider	37.15	37.17		74.32
220 Social Security Contributions	2,866.61	2,866.71		5,733.32
230 PSERS Retirement Contributions	13,720.41	13,720.43		27,440.84
270 Group Insurance – Self-Insurance	7,122.97	7,123.20		14,246.17
<b>Total Personnel Services – Employee Benefits</b>	<b>\$23,747.14</b>	<b>\$23,747.51</b>		<b>\$47,494.65</b>
<b>Total 2220 Technology Support Services</b>	<b>\$63,727.59</b>	<b>\$63,728.21</b>		<b>\$127,455.80</b>

General Fund (10)

2240 Computer-Assisted Instruction Support Services

600 Supplies

610 General Supplies

**Total Supplies**

**Total 2240 Computer-Assisted Instruction Support Services**

Elementary

Secondary

Federal

Total

3.78

3.79

7.57

**\$3.78**

**\$3.79**

**\$7.57**

**\$3.78**

**\$3.79**

**\$7.57**

**General Fund (10)**

	<u>Elementary</u>	<u>Secondary</u>	<u>Federal</u>	<u>Total</u>
<b>2250 School Library Services</b>				
<b>100 Personnel Services – Salaries</b>				
100 Personnel Services – Salaries	227,825.27	135,857.90		363,683.17
<b>Total Personnel Services – Salaries</b>	<b>\$227,825.27</b>	<b>\$135,857.90</b>		<b>\$363,683.17</b>
<b>200 Personnel Services – Employee Benefits</b>				
210 Group Insurance – Contracted Provider	283.90	188.60		472.50
220 Social Security Contributions	17,221.63	9,981.55		27,203.18
230 PSERS Retirement Contributions	76,973.33	45,899.81		122,873.14
270 Group Insurance – Self-Insurance	12,062.74	24,865.26		36,928.00
<b>Total Personnel Services – Employee Benefits</b>	<b>\$106,541.60</b>	<b>\$80,935.22</b>		<b>\$187,476.82</b>
<b>300 Purchased Professional and Technical Services</b>				
390 Other Purchased Professional and Technical Services		295.00		295.00
<b>Total Purchased Professional and Technical Services</b>		<b>\$295.00</b>		<b>\$295.00</b>
<b>600 Supplies</b>				
610 General Supplies	1,435.44	1,372.10		2,807.54
640 Books and Periodicals	12,104.65	24,573.51		36,678.16
<b>Total Supplies</b>	<b>\$13,540.09</b>	<b>\$25,945.61</b>		<b>\$39,485.70</b>
<b>800 Other Objects</b>				
810 Dues and Fees	5,543.87	4,371.99		9,915.86
<b>Total Other Objects</b>	<b>\$5,543.87</b>	<b>\$4,371.99</b>		<b>\$9,915.86</b>
<b>Total 2250 School Library Services</b>	<b>\$353,450.83</b>	<b>\$247,405.72</b>		<b>\$600,856.55</b>

General Fund (10)

2260 Instruction and Curriculum Development Services

	<u>Elementary</u>	<u>Secondary</u>	<u>Federal</u>	<u>Total</u>
<b>100 Personnel Services – Salaries</b>				
100 Personnel Services – Salaries	143,659.28	176,614.42		320,273.70
<b>Total Personnel Services – Salaries</b>	<b>\$143,659.28</b>	<b>\$176,614.42</b>		<b>\$320,273.70</b>
<b>200 Personnel Services – Employee Benefits</b>				
210 Group Insurance – Contracted Provider	409.95	409.94		819.89
220 Social Security Contributions	10,715.50	13,172.00		23,887.50
230 PSERS Retirement Contributions	49,254.91	60,571.37		109,826.28
270 Group Insurance – Self-Insurance	19,496.25	19,496.52		38,992.77
299 All Other Employee Benefits	1,500.00	1,500.00		3,000.00
<b>Total Personnel Services – Employee Benefits</b>	<b>\$81,376.61</b>	<b>\$95,149.83</b>		<b>\$176,526.44</b>
<b>500 Other Purchased Services</b>				
580 Travel	1,013.13	1,013.17		2,026.30
<b>Total Other Purchased Services</b>	<b>\$1,013.13</b>	<b>\$1,013.17</b>		<b>\$2,026.30</b>
<b>600 Supplies</b>				
610 General Supplies	6,132.03	6,132.22		12,264.25
640 Books and Periodicals	7,779.75	7,779.78		15,559.53
<b>Total Supplies</b>	<b>\$13,911.78</b>	<b>\$13,912.00</b>		<b>\$27,823.78</b>
<b>800 Other Objects</b>				
810 Dues and Fees	186.07	186.08		372.15
<b>Total Other Objects</b>	<b>\$186.07</b>	<b>\$186.08</b>		<b>\$372.15</b>
<b>Total 2260 Instruction and Curriculum Development Services</b>	<b>\$240,146.87</b>	<b>\$286,875.50</b>		<b>\$527,022.37</b>

**General Fund (10)**

<b>2270 Instructional Staff Professional Development Services</b>	<u>Elementary</u>	<u>Secondary</u>	<u>Federal</u>	<u>Total</u>
<b>200 Personnel Services – Employee Benefits</b>				
240 Tuition Reimbursement	190,186.69	127,572.72		317,759.41
<b>Total Personnel Services – Employee Benefits</b>	<b>\$190,186.69</b>	<b>\$127,572.72</b>		<b>\$317,759.41</b>
<b>300 Purchased Professional and Technical Services</b>				
322 Professional Educational Services – Ius	29,452.62	29,452.64		58,905.26
360 Employee Training and Development Services	30,360.54	31,165.55	8,130.01	69,656.10
<b>Total Purchased Professional and Technical Services</b>	<b>\$59,813.16</b>	<b>\$60,618.19</b>	<b>\$8,130.01</b>	<b>\$128,561.36</b>
<b>500 Other Purchased Services</b>				
580 Travel	5,426.21	7,842.13		13,268.34
<b>Total Other Purchased Services</b>	<b>\$5,426.21</b>	<b>\$7,842.13</b>		<b>\$13,268.34</b>
<b>Total 2270 Instructional Staff Professional Development Services</b>	<b>\$255,426.06</b>	<b>\$196,033.04</b>	<b>\$8,130.01</b>	<b>\$459,589.11</b>

**General Fund (10)**

	<u>Elementary</u>	<u>Secondary</u>	<u>Federal</u>	<u>Total</u>
<b>2300 Support Services – Administration</b>				
<b>100 Personnel Services – Salaries</b>				
100 Personnel Services – Salaries	543,036.25	589,987.66		1,491,002.31
<b>Total Personnel Services – Salaries</b>	<b>\$543,036.25</b>	<b>\$589,987.66</b>		<b>\$1,491,002.31</b>
<b>200 Personnel Services – Employee Benefits</b>				
210 Group Insurance – Contracted Provider	1,537.16	1,478.22		4,048.71
220 Social Security Contributions	39,822.19	43,428.80		107,950.32
230 PSERS Retirement Contributions	185,590.72	201,683.77		507,802.47
270 Group Insurance – Self-Insurance	108,751.65	110,592.30		253,397.47
299 All Other Employee Benefits				1,500.00
<b>Total Personnel Services – Employee Benefits</b>	<b>\$335,701.72</b>	<b>\$357,183.09</b>		<b>\$874,698.97</b>
<b>300 Purchased Professional and Technical Services</b>				
310 Official / Administrative Services				75,802.82
330 Other Professional Services				61,735.36
390 Other Purchased Professional and Technical Services		3,676.88		4,009.43
<b>Total Purchased Professional and Technical Services</b>		<b>\$3,676.88</b>		<b>\$141,547.61</b>
<b>500 Other Purchased Services</b>				
520 Insurance – General				18,224.00
530 Communications	8,261.02	7,292.11		16,128.13
549 Other Advertising/Public Relations				3,950.80
550 Printing and Binding		23.12		869.62
580 Travel	118.32			4,203.83
<b>Total Other Purchased Services</b>	<b>\$8,379.34</b>	<b>\$7,315.23</b>		<b>\$43,376.38</b>
<b>600 Supplies</b>				
610 General Supplies	478.28	11,829.15		27,959.98
640 Books and Periodicals				436.05
650 Supplies & Fees – Technology Related				6,383.43
<b>Total Supplies</b>	<b>\$478.28</b>	<b>\$11,829.15</b>		<b>\$34,779.46</b>
<b>800 Other Objects</b>				
810 Dues and Fees	2,082.50	2,465.00		36,800.79
820 Claims and Judgments Against the LEA				2,428.33
<b>Total Other Objects</b>	<b>\$2,082.50</b>	<b>\$2,465.00</b>		<b>\$39,229.12</b>
<b>Total 2300 Support Services – Administration</b>	<b>\$889,678.09</b>	<b>\$972,457.01</b>		<b>\$2,624,633.85</b>

General Fund (10)

2310 Board Services

Elementary

Secondary

Federal

Total

300 Purchased Professional and Technical Services

390 Other Purchased Professional and Technical Services

290.00

**Total Purchased Professional and Technical Services**

**\$290.00**

500 Other Purchased Services

520 Insurance – General

18,224.00

549 Other Advertising/Public Relations

3,950.80

**Total Other Purchased Services**

**\$22,174.80**

600 Supplies

610 General Supplies

1,618.48

**Total Supplies**

**\$1,618.48**

800 Other Objects

810 Dues and Fees

16,579.80

820 Claims and Judgments Against the LEA

2,428.33

**Total Other Objects**

**\$19,008.13**

**Total 2310 Board Services**

**\$43,091.41**

General Fund (10)

	<u>Elementary</u>	<u>Secondary</u>	<u>Federal</u>	<u>Total</u>
<b>2330 Tax Assessment and Collection Services</b>				
<b>300 <u>Purchased Professional and Technical Services</u></b>				
310 Official / Administrative Services				75,802.82
<b>Total Purchased Professional and Technical Services</b>				<b>\$75,802.82</b>
<b>500 <u>Other Purchased Services</u></b>				
530 Communications				575.00
550 Printing and Binding				846.50
<b>Total Other Purchased Services</b>				<b>\$1,421.50</b>
<b>600 <u>Supplies</u></b>				
610 General Supplies				3,884.97
<b>Total Supplies</b>				<b>\$3,884.97</b>
<b>800 <u>Other Objects</u></b>				
810 Dues and Fees				9,248.49
<b>Total Other Objects</b>				<b>\$9,248.49</b>
<b>Total 2330 Tax Assessment and Collection Services</b>				<b>\$90,357.78</b>

LEA : 113364403 Manheim Central SD

Printed 1/4/2021 10:26:38 AM

General Fund (10)

2340 Staff Relations and Negotiations Services

Elementary

Secondary

Federal

Total

600 Supplies

610 General Supplies

80.39

**Total Supplies**

**\$80.39**

**Total 2340 Staff Relations and Negotiations Services**

**\$80.39**

General Fund (10)

2350 Legal and Accounting Services

Elementary

Secondary

Federal

Total

300 Purchased Professional and Technical Services

330 Other Professional Services

61,636.36

**Total Purchased Professional and Technical Services**

**\$61,636.36**

**Total 2350 Legal and Accounting Services**

**\$61,636.36**

General Fund (10)

	<u>Elementary</u>	<u>Secondary</u>	<u>Federal</u>	<u>Total</u>
<b>2360 Office of the Superintendent / Executive Director Services</b>				
<b>100 Personnel Services – Salaries</b>				
100 Personnel Services – Salaries				357,978.40
<b>Total Personnel Services – Salaries</b>				<b>\$357,978.40</b>
<b>200 Personnel Services – Employee Benefits</b>				
210 Group Insurance – Contracted Provider				1,033.33
220 Social Security Contributions				24,699.33
230 PSERS Retirement Contributions				120,527.98
270 Group Insurance – Self-Insurance				34,053.52
299 All Other Employee Benefits				1,500.00
<b>Total Personnel Services – Employee Benefits</b>				<b>\$181,814.16</b>
<b>300 Purchased Professional and Technical Services</b>				
330 Other Professional Services				99.00
390 Other Purchased Professional and Technical Services				42.55
<b>Total Purchased Professional and Technical Services</b>				<b>\$141.55</b>
<b>500 Other Purchased Services</b>				
530 Communications	1,330.07	1,330.21		2,660.28
580 Travel				4,085.51
<b>Total Other Purchased Services</b>	<b>\$1,330.07</b>	<b>\$1,330.21</b>		<b>\$6,745.79</b>
<b>600 Supplies</b>				
610 General Supplies				10,068.71
640 Books and Periodicals				436.05
650 Supplies & Fees – Technology Related				6,383.43
<b>Total Supplies</b>				<b>\$16,888.19</b>
<b>800 Other Objects</b>				
810 Dues and Fees				6,425.00
<b>Total Other Objects</b>				<b>\$6,425.00</b>
<b>Total 2360 Office of the Superintendent / Executive Director Services</b>	<b>\$1,330.07</b>	<b>\$1,330.21</b>		<b>\$569,993.09</b>

**General Fund (10)**

	<u>Elementary</u>	<u>Secondary</u>	<u>Federal</u>	<u>Total</u>
<b>2380 Office of the Principal Services</b>				
<b>100 Personnel Services – Salaries</b>				
100 Personnel Services – Salaries	543,036.25	589,987.66		1,133,023.91
<b>Total Personnel Services – Salaries</b>	<b>\$543,036.25</b>	<b>\$589,987.66</b>		<b>\$1,133,023.91</b>
<b>200 Personnel Services – Employee Benefits</b>				
210 Group Insurance – Contracted Provider	1,537.16	1,478.22		3,015.38
220 Social Security Contributions	39,822.19	43,428.80		83,250.99
230 PSERS Retirement Contributions	185,590.72	201,683.77		387,274.49
270 Group Insurance – Self-Insurance	108,751.65	110,592.30		219,343.95
<b>Total Personnel Services – Employee Benefits</b>	<b>\$335,701.72</b>	<b>\$357,183.09</b>		<b>\$692,884.81</b>
<b>300 Purchased Professional and Technical Services</b>				
390 Other Purchased Professional and Technical Services		3,676.88		3,676.88
<b>Total Purchased Professional and Technical Services</b>		<b>\$3,676.88</b>		<b>\$3,676.88</b>
<b>500 Other Purchased Services</b>				
530 Communications	6,930.95	5,961.90		12,892.85
550 Printing and Binding		23.12		23.12
580 Travel	118.32			118.32
<b>Total Other Purchased Services</b>	<b>\$7,049.27</b>	<b>\$5,985.02</b>		<b>\$13,034.29</b>
<b>600 Supplies</b>				
610 General Supplies	478.28	11,829.15		12,307.43
<b>Total Supplies</b>	<b>\$478.28</b>	<b>\$11,829.15</b>		<b>\$12,307.43</b>
<b>800 Other Objects</b>				
810 Dues and Fees	2,082.50	2,465.00		4,547.50
<b>Total Other Objects</b>	<b>\$2,082.50</b>	<b>\$2,465.00</b>		<b>\$4,547.50</b>
<b>Total 2380 Office of the Principal Services</b>	<b>\$888,348.02</b>	<b>\$971,126.80</b>		<b>\$1,859,474.82</b>

**General Fund (10)**

	<u>Elementary</u>	<u>Secondary</u>	<u>Federal</u>	<u>Total</u>
<b>2400 Support Services – Pupil Health</b>				
<b>100 Personnel Services – Salaries</b>				
100 Personnel Services – Salaries				259,179.78
<b>Total Personnel Services – Salaries</b>				<b>\$259,179.78</b>
<b>200 Personnel Services – Employee Benefits</b>				
210 Group Insurance – Contracted Provider				501.88
220 Social Security Contributions				18,630.92
230 PSERS Retirement Contributions				85,886.75
270 Group Insurance – Self-Insurance				74,373.06
<b>Total Personnel Services – Employee Benefits</b>				<b>\$179,392.61</b>
<b>600 Supplies</b>				
610 General Supplies			3,902.13	8,320.56
<b>Total Supplies</b>			<b>\$3,902.13</b>	<b>\$8,320.56</b>
<b>Total 2400 Support Services – Pupil Health</b>			<b>\$3,902.13</b>	<b>\$446,892.95</b>

**General Fund (10)**

**2440 Nursing Services**

	<u>Elementary</u>	<u>Secondary</u>	<u>Federal</u>	<u>Total</u>
<b>100 Personnel Services – Salaries</b>				
100 Personnel Services – Salaries				259,179.78
<b>Total Personnel Services – Salaries</b>				<b>\$259,179.78</b>
<b>200 Personnel Services – Employee Benefits</b>				
210 Group Insurance – Contracted Provider				501.88
220 Social Security Contributions				18,630.92
230 PSERS Retirement Contributions				85,886.75
270 Group Insurance – Self-Insurance				74,373.06
<b>Total Personnel Services – Employee Benefits</b>				<b>\$179,392.61</b>
<b>600 Supplies</b>				
610 General Supplies			3,902.13	8,320.56
<b>Total Supplies</b>			<b>\$3,902.13</b>	<b>\$8,320.56</b>
<b>Total 2440 Nursing Services</b>			<b>\$3,902.13</b>	<b>\$446,892.95</b>

General Fund (10)

	<u>Elementary</u>	<u>Secondary</u>	<u>Federal</u>	<u>Total</u>
<b>2500 Support Services – Business</b>				
<b>100 Personnel Services – Salaries</b>				
100 Personnel Services – Salaries				355,271.92
<b>Total Personnel Services – Salaries</b>				<b>\$355,271.92</b>
<b>200 Personnel Services – Employee Benefits</b>				
210 Group Insurance – Contracted Provider				27,508.30
220 Social Security Contributions				26,581.86
230 PSERS Retirement Contributions				120,948.28
270 Group Insurance – Self-Insurance				48,322.36
299 All Other Employee Benefits				3,000.00
<b>Total Personnel Services – Employee Benefits</b>				<b>\$226,360.80</b>
<b>300 Purchased Professional and Technical Services</b>				
330 Other Professional Services				30,200.00
<b>Total Purchased Professional and Technical Services</b>				<b>\$30,200.00</b>
<b>500 Other Purchased Services</b>				
530 Communications				20,696.52
550 Printing and Binding				13,212.06
580 Travel				519.09
<b>Total Other Purchased Services</b>				<b>\$34,427.67</b>
<b>600 Supplies</b>				
610 General Supplies				7,821.97
650 Supplies & Fees – Technology Related				88,136.89
<b>Total Supplies</b>				<b>\$95,958.86</b>
<b>800 Other Objects</b>				
810 Dues and Fees				19,699.43
<b>Total Other Objects</b>				<b>\$19,699.43</b>
<b>Total 2500 Support Services – Business</b>				<b>\$761,918.68</b>

**General Fund (10)**

2510 Fiscal Services	<u>Elementary</u>	<u>Secondary</u>	<u>Federal</u>	<u>Total</u>
<b>100 Personnel Services – Salaries</b>				
100 Personnel Services – Salaries				342,305.68
<b>Total Personnel Services – Salaries</b>				<b>\$342,305.68</b>
<b>200 Personnel Services – Employee Benefits</b>				
210 Group Insurance – Contracted Provider				27,508.30
220 Social Security Contributions				25,589.97
230 PSERS Retirement Contributions				116,500.12
270 Group Insurance – Self-Insurance				48,322.36
299 All Other Employee Benefits				3,000.00
<b>Total Personnel Services – Employee Benefits</b>				<b>\$220,920.75</b>
<b>300 Purchased Professional and Technical Services</b>				
330 Other Professional Services				30,200.00
<b>Total Purchased Professional and Technical Services</b>				<b>\$30,200.00</b>
<b>500 Other Purchased Services</b>				
530 Communications				20,696.52
580 Travel				519.09
<b>Total Other Purchased Services</b>				<b>\$21,215.61</b>
<b>600 Supplies</b>				
610 General Supplies				7,821.97
650 Supplies & Fees – Technology Related				88,136.89
<b>Total Supplies</b>				<b>\$95,958.86</b>
<b>800 Other Objects</b>				
810 Dues and Fees				19,699.43
<b>Total Other Objects</b>				<b>\$19,699.43</b>
<b>Total 2510 Fiscal Services</b>				<b>\$730,300.33</b>

General Fund (10)

2511 Supervision of Fiscal Services - Head of Component

Elementary                      Secondary                      Federal                      Total

<b>100 Personnel Services – Salaries</b>				
100 Personnel Services – Salaries				196,459.66
<b>Total Personnel Services – Salaries</b>				<b>\$196,459.66</b>
<b>200 Personnel Services – Employee Benefits</b>				
210 Group Insurance – Contracted Provider				27,118.45
220 Social Security Contributions				14,745.64
230 PSERS Retirement Contributions				67,046.75
270 Group Insurance – Self-Insurance				31,465.12
299 All Other Employee Benefits				1,500.00
<b>Total Personnel Services – Employee Benefits</b>				<b>\$141,875.96</b>
<b>300 Purchased Professional and Technical Services</b>				
330 Other Professional Services				30,200.00
<b>Total Purchased Professional and Technical Services</b>				<b>\$30,200.00</b>
<b>500 Other Purchased Services</b>				
530 Communications				20,696.52
580 Travel				519.09
<b>Total Other Purchased Services</b>				<b>\$21,215.61</b>
<b>600 Supplies</b>				
610 General Supplies				7,821.97
650 Supplies & Fees – Technology Related				88,136.89
<b>Total Supplies</b>				<b>\$95,958.86</b>
<b>800 Other Objects</b>				
810 Dues and Fees				16,199.43
<b>Total Other Objects</b>				<b>\$16,199.43</b>
<b>Total 2511 Supervision of Fiscal Services - Head of Component</b>				<b>\$501,909.52</b>

General Fund (10)

2512 Budgeting Services

Elementary

Secondary

Federal

Total

100 Personnel Services – Salaries

100 Personnel Services – Salaries

83,534.92

**Total Personnel Services – Salaries**

**\$83,534.92**

200 Personnel Services – Employee Benefits

210 Group Insurance – Contracted Provider

275.49

220 Social Security Contributions

6,520.88

230 PSERS Retirement Contributions

28,078.44

299 All Other Employee Benefits

1,500.00

**Total Personnel Services – Employee Benefits**

**\$36,374.81**

**Total 2512 Budgeting Services**

**\$119,909.73**

General Fund (10)

2513 Receiving and Disbursing Funds Services

Elementary

Secondary

Federal

Total

100 Personnel Services – Salaries

100 Personnel Services – Salaries

17,365.50

**Total Personnel Services – Salaries**

**\$17,365.50**

200 Personnel Services – Employee Benefits

210 Group Insurance – Contracted Provider

38.10

220 Social Security Contributions

1,291.87

230 PSERS Retirement Contributions

5,957.03

270 Group Insurance – Self-Insurance

2,972.78

**Total Personnel Services – Employee Benefits**

**\$10,259.78**

**Total 2513 Receiving and Disbursing Funds Services**

**\$27,625.28**

General Fund (10)

2514 Payroll Services

Elementary

Secondary

Federal

Total

100 Personnel Services – Salaries

100 Personnel Services – Salaries

44,945.60

**Total Personnel Services – Salaries**

**\$44,945.60**

200 Personnel Services – Employee Benefits

210 Group Insurance – Contracted Provider

76.26

220 Social Security Contributions

3,031.58

230 PSERS Retirement Contributions

15,417.90

270 Group Insurance – Self-Insurance

13,884.46

**Total Personnel Services – Employee Benefits**

**\$32,410.20**

**Total 2514 Payroll Services**

**\$77,355.80**

General Fund (10)

2519 Other Fiscal Services

Elementary

Secondary

Federal

Total

800 Other Objects

810 Dues and Fees

3,500.00

**Total Other Objects**

**\$3,500.00**

**Total 2519 Other Fiscal Services**

**\$3,500.00**

General Fund (10)

2530 Warehousing and Distributing Services	<u>Elementary</u>	<u>Secondary</u>	<u>Federal</u>	<u>Total</u>
<b>100 Personnel Services – Salaries</b>				
100 Personnel Services – Salaries				12,966.24
<b>Total Personnel Services – Salaries</b>				<b>\$12,966.24</b>
<b>200 Personnel Services – Employee Benefits</b>				
220 Social Security Contributions				991.89
230 PSERS Retirement Contributions				4,448.16
<b>Total Personnel Services – Employee Benefits</b>				<b>\$5,440.05</b>
<b>Total 2530 Warehousing and Distributing Services</b>				<b>\$18,406.29</b>

General Fund (10)

2540 Printing, Publishing and Duplicating Services

Elementary

Secondary

Federal

Total

500 Other Purchased Services

550 Printing and Binding

13,212.06

**Total Other Purchased Services**

**\$13,212.06**

**Total 2540 Printing, Publishing and Duplicating Services**

**\$13,212.06**

**General Fund (10)**

	<u>Elementary</u>	<u>Secondary</u>	<u>Federal</u>	<u>Total</u>
<b>2600 Operation and Maintenance of Plant Services</b>				
<b>100 Personnel Services – Salaries</b>				
100 Personnel Services – Salaries				1,316,179.99
<b>Total Personnel Services – Salaries</b>				<b>\$1,316,179.99</b>
<b>200 Personnel Services – Employee Benefits</b>				
210 Group Insurance – Contracted Provider				2,288.48
220 Social Security Contributions				96,650.33
230 PSERS Retirement Contributions				440,018.84
270 Group Insurance – Self-Insurance				276,677.42
299 All Other Employee Benefits				1,500.00
<b>Total Personnel Services – Employee Benefits</b>				<b>\$817,135.07</b>
<b>300 Purchased Professional and Technical Services</b>				
330 Other Professional Services				4,156.38
350 Security / Safety Services				80,677.76
<b>Total Purchased Professional and Technical Services</b>				<b>\$84,834.14</b>
<b>400 Purchased Property Services</b>				
410 Cleaning Services				104,348.24
420 Utility Services				122,621.16
430 Repairs and Maintenance Services				173,248.62
440 Rentals				6,025.53
460 Extermination Services				4,530.00
<b>Total Purchased Property Services</b>				<b>\$410,773.55</b>
<b>500 Other Purchased Services</b>				
522 Automotive Liability Insurance				10,609.50
523 General Property and Liability Insurance				152,450.00
529 Other Insurance				992.40
530 Communications				34,761.22
<b>Total Other Purchased Services</b>				<b>\$198,813.12</b>
<b>600 Supplies</b>				
610 General Supplies	120,258.58	104,716.97	10,944.15	235,919.70
620 Energy				626,447.73
<b>Total Supplies</b>	<b>\$120,258.58</b>	<b>\$104,716.97</b>	<b>\$10,944.15</b>	<b>\$862,367.43</b>
<b>700 Property</b>				
752 Capital Equipment – Original and Additional				14,098.10
<b>Total Property</b>				<b>\$14,098.10</b>
<b>800 Other Objects</b>				
810 Dues and Fees				635.00
<b>Total Other Objects</b>				<b>\$635.00</b>
<b>Total 2600 Operation and Maintenance of Plant Services</b>	<b>\$120,258.58</b>	<b>\$104,716.97</b>	<b>\$10,944.15</b>	<b>\$3,704,836.40</b>

**General Fund (10)**

	<u>Elementary</u>	<u>Secondary</u>	<u>Federal</u>	<u>Total</u>
<b>2610 Supervision of Operation and Maintenance of Plant Services</b>				
<b>100 Personnel Services – Salaries</b>				
100 Personnel Services – Salaries				131,850.02
<b>Total Personnel Services – Salaries</b>				<b>\$131,850.02</b>
<b>200 Personnel Services – Employee Benefits</b>				
210 Group Insurance – Contracted Provider				359.48
220 Social Security Contributions				9,987.35
230 PSERS Retirement Contributions				45,277.78
270 Group Insurance – Self-Insurance				19,469.27
299 All Other Employee Benefits				1,500.00
<b>Total Personnel Services – Employee Benefits</b>				<b>\$76,593.88</b>
<b>400 Purchased Property Services</b>				
440 Rentals				6,025.53
<b>Total Purchased Property Services</b>				<b>\$6,025.53</b>
<b>500 Other Purchased Services</b>				
529 Other Insurance				992.40
<b>Total Other Purchased Services</b>				<b>\$992.40</b>
<b>600 Supplies</b>				
610 General Supplies	10.94	10.95		21.89
<b>Total Supplies</b>	<b>\$10.94</b>	<b>\$10.95</b>		<b>\$21.89</b>
<b>800 Other Objects</b>				
810 Dues and Fees				635.00
<b>Total Other Objects</b>				<b>\$635.00</b>
<b>Total 2610 Supervision of Operation and Maintenance of Plant Services</b>	<b>\$10.94</b>	<b>\$10.95</b>		<b>\$216,118.72</b>

**General Fund (10)**

	<u>Elementary</u>	<u>Secondary</u>	<u>Federal</u>	<u>Total</u>
<b>2611 Supervision of Operation and Maintenance of Plant Services – Head of Component</b>				
<b>100 Personnel Services – Salaries</b>				
100 Personnel Services – Salaries				131,850.02
<b>Total Personnel Services – Salaries</b>				<b>\$131,850.02</b>
<b>200 Personnel Services – Employee Benefits</b>				
210 Group Insurance – Contracted Provider				359.48
220 Social Security Contributions				9,987.35
230 PSERS Retirement Contributions				45,277.78
270 Group Insurance – Self-Insurance				19,469.27
299 All Other Employee Benefits				1,500.00
<b>Total Personnel Services – Employee Benefits</b>				<b>\$76,593.88</b>
<b>400 Purchased Property Services</b>				
440 Rentals				6,025.53
<b>Total Purchased Property Services</b>				<b>\$6,025.53</b>
<b>500 Other Purchased Services</b>				
529 Other Insurance				992.40
<b>Total Other Purchased Services</b>				<b>\$992.40</b>
<b>600 Supplies</b>				
610 General Supplies	10.94	10.95		21.89
<b>Total Supplies</b>	<b>\$10.94</b>	<b>\$10.95</b>		<b>\$21.89</b>
<b>800 Other Objects</b>				
810 Dues and Fees				635.00
<b>Total Other Objects</b>				<b>\$635.00</b>
<b>Total 2611 Supervision of Operation and Maintenance of Plant Services – Head of Component</b>	<b>\$10.94</b>	<b>\$10.95</b>		<b>\$216,118.72</b>

**General Fund (10)**

	<u>Elementary</u>	<u>Secondary</u>	<u>Federal</u>	<u>Total</u>
<b>2620 Operation of Buildings Services</b>				
<b>100 Personnel Services – Salaries</b>				
100 Personnel Services – Salaries				1,184,329.97
<b>Total Personnel Services – Salaries</b>				<b>\$1,184,329.97</b>
<b>200 Personnel Services – Employee Benefits</b>				
210 Group Insurance – Contracted Provider				1,929.00
220 Social Security Contributions				86,662.98
230 PSERS Retirement Contributions				394,741.06
270 Group Insurance – Self-Insurance				257,208.15
<b>Total Personnel Services – Employee Benefits</b>				<b>\$740,541.19</b>
<b>300 Purchased Professional and Technical Services</b>				
330 Other Professional Services				4,156.38
350 Security / Safety Services				3,692.72
<b>Total Purchased Professional and Technical Services</b>				<b>\$7,849.10</b>
<b>400 Purchased Property Services</b>				
410 Cleaning Services				44,451.16
420 Utility Services				122,621.16
430 Repairs and Maintenance Services				168,058.51
460 Extermination Services				4,530.00
<b>Total Purchased Property Services</b>				<b>\$339,660.83</b>
<b>500 Other Purchased Services</b>				
523 General Property and Liability Insurance				152,450.00
530 Communications				34,761.22
<b>Total Other Purchased Services</b>				<b>\$187,211.22</b>
<b>600 Supplies</b>				
610 General Supplies	99,373.64	84,656.55	10,944.15	194,974.34
620 Energy				617,631.99
<b>Total Supplies</b>	<b>\$99,373.64</b>	<b>\$84,656.55</b>	<b>\$10,944.15</b>	<b>\$812,606.33</b>
<b>700 Property</b>				
752 Capital Equipment – Original and Additional				14,098.10
<b>Total Property</b>				<b>\$14,098.10</b>
<b>Total 2620 Operation of Buildings Services</b>	<b>\$99,373.64</b>	<b>\$84,656.55</b>	<b>\$10,944.15</b>	<b>\$3,286,296.74</b>

General Fund (10)

	<u>Elementary</u>	<u>Secondary</u>	<u>Federal</u>	<u>Total</u>
<b>2630 Care and Upkeep of Grounds Services</b>				
<b>400 <u>Purchased Property Services</u></b>				
410 Cleaning Services				59,897.08
<b>Total Purchased Property Services</b>				<b>\$59,897.08</b>
<b>600 <u>Supplies</u></b>				
610 General Supplies	4,579.82	3,755.27		8,335.09
<b>Total Supplies</b>	<b>\$4,579.82</b>	<b>\$3,755.27</b>		<b>\$8,335.09</b>
<b>Total 2630 Care and Upkeep of Grounds Services</b>	<b>\$4,579.82</b>	<b>\$3,755.27</b>		<b>\$68,232.17</b>

General Fund (10)

2640 Care and Upkeep of Equipment Services

Elementary

Secondary

Federal

Total

600 Supplies

620 Energy

83.50

**Total Supplies**

**\$83.50**

**Total 2640 Care and Upkeep of Equipment Services**

**\$83.50**

General Fund (10)

	<u>Elementary</u>	<u>Secondary</u>	<u>Federal</u>	<u>Total</u>
<b>2650 Vehicle Operation and Maintenance Services (Other Than Student Transportation Vehicles)</b>				
<b>400 <u>Purchased Property Services</u></b>				
430 Repairs and Maintenance Services				5,190.11
<b>Total Purchased Property Services</b>				<b>\$5,190.11</b>
<b>500 <u>Other Purchased Services</u></b>				
522 Automotive Liability Insurance				10,609.50
<b>Total Other Purchased Services</b>				<b>\$10,609.50</b>
<b>600 <u>Supplies</u></b>				
620 Energy				8,732.24
<b>Total Supplies</b>				<b>\$8,732.24</b>
<b>Total 2650 Vehicle Operation and Maintenance Services (Other Than Student Transportation Vehicles)</b>				<b>\$24,531.85</b>

General Fund (10)

2660 Safety and Security Services

Elementary

Secondary

Federal

Total

300 Purchased Professional and Technical Services

350 Security / Safety Services

76,985.04

**Total Purchased Professional and Technical Services**

**\$76,985.04**

600 Supplies

610 General Supplies

16,294.18

16,294.20

32,588.38

**Total Supplies**

**\$16,294.18**

**\$16,294.20**

**\$32,588.38**

**Total 2660 Safety and Security Services**

**\$16,294.18**

**\$16,294.20**

**\$109,573.42**

General Fund (10)

	<u>Elementary</u>	<u>Secondary</u>	<u>Federal</u>	<u>Total</u>
<b>2700 Student Transportation Services</b>				
<b>100 Personnel Services – Salaries</b>				
100 Personnel Services – Salaries				57,336.33
<b>Total Personnel Services – Salaries</b>				<b>\$57,336.33</b>
<b>200 Personnel Services – Employee Benefits</b>				
210 Group Insurance – Contracted Provider				76.25
220 Social Security Contributions				4,157.27
230 PSERS Retirement Contributions				19,668.80
270 Group Insurance – Self-Insurance				14,246.17
<b>Total Personnel Services – Employee Benefits</b>				<b>\$38,148.49</b>
<b>300 Purchased Professional and Technical Services</b>				
340 Technical Services				3,700.00
<b>Total Purchased Professional and Technical Services</b>				<b>\$3,700.00</b>
<b>400 Purchased Property Services</b>				
430 Repairs and Maintenance Services				2,232.79
<b>Total Purchased Property Services</b>				<b>\$2,232.79</b>
<b>500 Other Purchased Services</b>				
513 Contracted Carriers				2,994,749.99
516 Student Transportation Services From the IU				11,693.22
530 Communications				1,498.46
580 Travel				61.94
<b>Total Other Purchased Services</b>				<b>\$3,008,003.61</b>
<b>600 Supplies</b>				
610 General Supplies				22,229.90
620 Energy				2,989.30
<b>Total Supplies</b>				<b>\$25,219.20</b>
<b>700 Property</b>				
752 Capital Equipment – Original and Additional				8,533.18
<b>Total Property</b>				<b>\$8,533.18</b>
<b>Total 2700 Student Transportation Services</b>				<b>\$3,143,173.60</b>

General Fund (10)

	<u>Elementary</u>	<u>Secondary</u>	<u>Federal</u>	<u>Total</u>
<b>2710 Supervision of Student Transportation Services</b>				
<b>100 Personnel Services – Salaries</b>				
100 Personnel Services – Salaries				57,336.33
<b>Total Personnel Services – Salaries</b>				<b>\$57,336.33</b>
<b>200 Personnel Services – Employee Benefits</b>				
210 Group Insurance – Contracted Provider				76.25
220 Social Security Contributions				4,157.27
230 PSERS Retirement Contributions				19,668.80
270 Group Insurance – Self-Insurance				14,246.17
<b>Total Personnel Services – Employee Benefits</b>				<b>\$38,148.49</b>
<b>300 Purchased Professional and Technical Services</b>				
340 Technical Services				3,700.00
<b>Total Purchased Professional and Technical Services</b>				<b>\$3,700.00</b>
<b>500 Other Purchased Services</b>				
580 Travel				61.94
<b>Total Other Purchased Services</b>				<b>\$61.94</b>
<b>600 Supplies</b>				
610 General Supplies				21,909.90
<b>Total Supplies</b>				<b>\$21,909.90</b>
<b>Total 2710 Supervision of Student Transportation Services</b>				<b>\$121,156.66</b>

General Fund (10)

2711 Supervision of Student Transportation Services – Head of Component

Elementary

Secondary

Federal

Total

100 Personnel Services – Salaries

100 Personnel Services – Salaries

57,336.33

**Total Personnel Services – Salaries**

**\$57,336.33**

200 Personnel Services – Employee Benefits

210 Group Insurance – Contracted Provider

76.25

220 Social Security Contributions

4,157.27

230 PSERS Retirement Contributions

19,668.80

270 Group Insurance – Self-Insurance

14,246.17

**Total Personnel Services – Employee Benefits**

**\$38,148.49**

500 Other Purchased Services

580 Travel

61.94

**Total Other Purchased Services**

**\$61.94**

600 Supplies

610 General Supplies

6,739.90

**Total Supplies**

**\$6,739.90**

**Total 2711 Supervision of Student Transportation Services – Head of Component**

**\$102,286.66**

General Fund (10)

	<u>Elementary</u>	<u>Secondary</u>	<u>Federal</u>	<u>Total</u>
<b>2719 Supervision of Student Transportation Services – All Other Supervision</b>				
<b>300 <u>Purchased Professional and Technical Services</u></b>				
340 Technical Services				3,700.00
<b>Total Purchased Professional and Technical Services</b>				<b>\$3,700.00</b>
<b>600 <u>Supplies</u></b>				
610 General Supplies				15,170.00
<b>Total Supplies</b>				<b>\$15,170.00</b>
<b>Total 2719 Supervision of Student Transportation Services – All Other Supervision</b>				<b>\$18,870.00</b>

General Fund (10)

2720 Vehicle Operation Services

Elementary

Secondary

Federal

Total

400 Purchased Property Services

430 Repairs and Maintenance Services

2,232.79

**Total Purchased Property Services**

**\$2,232.79**

500 Other Purchased Services

513 Contracted Carriers

2,445,709.71

516 Student Transportation Services From the IU

11,693.22

530 Communications

1,498.46

**Total Other Purchased Services**

**\$2,458,901.39**

600 Supplies

610 General Supplies

320.00

620 Energy

2,989.30

**Total Supplies**

**\$3,309.30**

700 Property

752 Capital Equipment – Original and Additional

8,533.18

**Total Property**

**\$8,533.18**

**Total 2720 Vehicle Operation Services**

**\$2,472,976.66**

General Fund (10)

2750 Nonpublic Transportation

Elementary

Secondary

Federal

Total

500 Other Purchased Services

513 Contracted Carriers

549,040.28

**Total Other Purchased Services**

**\$549,040.28**

**Total 2750 Nonpublic Transportation**

**\$549,040.28**

General Fund (10)

2800 Support Services – Central

Elementary                      Secondary                      Federal                      Total

100 Personnel Services – Salaries

100 Personnel Services – Salaries 497,925.16

**Total Personnel Services – Salaries \$497,925.16**

200 Personnel Services – Employee Benefits

210 Group Insurance – Contracted Provider 3,299.08

220 Social Security Contributions 37,814.05

230 PSERS Retirement Contributions 166,729.30

240 Tuition Reimbursement 87,691.00

270 Group Insurance – Self-Insurance 80,787.93

299 All Other Employee Benefits 15,000.00

**Total Personnel Services – Employee Benefits \$391,321.36**

300 Purchased Professional and Technical Services

329 Professional Educational Services – Other 5,264.20

330 Other Professional Services 407.04

340 Technical Services 94,561.81

360 Employee Training and Development Services 7,151.60

**Total Purchased Professional and Technical Services \$107,384.65**

400 Purchased Property Services

430 Repairs and Maintenance Services 83,833.28

440 Rentals 44,487.68

**Total Purchased Property Services \$128,320.96**

500 Other Purchased Services

530 Communications 1,090.02

549 Other Advertising/Public Relations 1,708.76

580 Travel 6,149.23

**Total Other Purchased Services \$8,948.01**

600 Supplies

610 General Supplies 97,627.60

650 Supplies & Fees – Technology Related 298,572.18

**Total Supplies \$396,199.78**

700 Property

766 Capitalized Technology Equipment– Replacement 764.25

**Total Property \$764.25**

800 Other Objects

810 Dues and Fees 225.00

**Total Other Objects \$225.00**

**Total 2800 Support Services – Central \$1,531,089.17**

General Fund (10)

2810 Planning, Research, Development and Evaluation Services

Elementary

Secondary

Federal

Total

600 Supplies

610 General Supplies

67,788.59

**Total Supplies**

**\$67,788.59**

**Total 2810 Planning, Research, Development and Evaluation Services**

**\$67,788.59**

**General Fund (10)**

	<u>Elementary</u>	<u>Secondary</u>	<u>Federal</u>	<u>Total</u>
<b>2820 Information Services</b>				
<b>100 Personnel Services – Salaries</b>				
100 Personnel Services – Salaries				357,493.69
<b>Total Personnel Services – Salaries</b>				<b>\$357,493.69</b>
<b>200 Personnel Services – Employee Benefits</b>				
210 Group Insurance – Contracted Provider				688.04
220 Social Security Contributions				26,604.00
230 PSERS Retirement Contributions				122,526.26
270 Group Insurance – Self-Insurance				56,457.23
299 All Other Employee Benefits				1,500.00
<b>Total Personnel Services – Employee Benefits</b>				<b>\$207,775.53</b>
<b>300 Purchased Professional and Technical Services</b>				
340 Technical Services				94,561.81
<b>Total Purchased Professional and Technical Services</b>				<b>\$94,561.81</b>
<b>400 Purchased Property Services</b>				
430 Repairs and Maintenance Services				83,833.28
440 Rentals				44,487.68
<b>Total Purchased Property Services</b>				<b>\$128,320.96</b>
<b>500 Other Purchased Services</b>				
530 Communications				1,090.02
580 Travel				724.29
<b>Total Other Purchased Services</b>				<b>\$1,814.31</b>
<b>600 Supplies</b>				
610 General Supplies				28,058.79
650 Supplies & Fees – Technology Related				281,642.27
<b>Total Supplies</b>				<b>\$309,701.06</b>
<b>700 Property</b>				
766 Capitalized Technology Equipment – Replacement				764.25
<b>Total Property</b>				<b>\$764.25</b>
<b>Total 2820 Information Services</b>				<b>\$1,100,431.61</b>

**General Fund (10)**

	<u>Elementary</u>	<u>Secondary</u>	<u>Federal</u>	<u>Total</u>
<b>2821 Supervision of Information Services</b>				
<b>100 Personnel Services – Salaries</b>				
100 Personnel Services – Salaries				357,493.69
<b>Total Personnel Services – Salaries</b>				<b>\$357,493.69</b>
<b>200 Personnel Services – Employee Benefits</b>				
210 Group Insurance – Contracted Provider				688.04
220 Social Security Contributions				26,604.00
230 PSERS Retirement Contributions				122,526.26
270 Group Insurance – Self-Insurance				56,457.23
299 All Other Employee Benefits				1,500.00
<b>Total Personnel Services – Employee Benefits</b>				<b>\$207,775.53</b>
<b>300 Purchased Professional and Technical Services</b>				
340 Technical Services				94,561.81
<b>Total Purchased Professional and Technical Services</b>				<b>\$94,561.81</b>
<b>400 Purchased Property Services</b>				
430 Repairs and Maintenance Services				83,833.28
440 Rentals				44,487.68
<b>Total Purchased Property Services</b>				<b>\$128,320.96</b>
<b>500 Other Purchased Services</b>				
530 Communications				1,090.02
580 Travel				724.29
<b>Total Other Purchased Services</b>				<b>\$1,814.31</b>
<b>600 Supplies</b>				
610 General Supplies				28,058.79
650 Supplies & Fees – Technology Related				281,642.27
<b>Total Supplies</b>				<b>\$309,701.06</b>
<b>700 Property</b>				
766 Capitalized Technology Equipment – Replacement				764.25
<b>Total Property</b>				<b>\$764.25</b>
<b>Total 2821 Supervision of Information Services</b>				<b>\$1,100,431.61</b>



**General Fund (10)**

	<u>Elementary</u>	<u>Secondary</u>	<u>Federal</u>	<u>Total</u>
<b>2831 Supervision of Staff Services</b>				
<b>100 Personnel Services – Salaries</b>				
100 Personnel Services – Salaries				128,919.45
<b>Total Personnel Services – Salaries</b>				<b>\$128,919.45</b>
<b>200 Personnel Services – Employee Benefits</b>				
210 Group Insurance – Contracted Provider				390.34
220 Social Security Contributions				10,329.37
230 PSERS Retirement Contributions				44,203.04
270 Group Insurance – Self-Insurance				24,330.70
299 All Other Employee Benefits				13,500.00
<b>Total Personnel Services – Employee Benefits</b>				<b>\$92,753.45</b>
<b>300 Purchased Professional and Technical Services</b>				
329 Professional Educational Services – Other				1,352.80
330 Other Professional Services				407.04
<b>Total Purchased Professional and Technical Services</b>				<b>\$1,759.84</b>
<b>500 Other Purchased Services</b>				
549 Other Advertising/Public Relations				1,708.76
580 Travel				61.12
<b>Total Other Purchased Services</b>				<b>\$1,769.88</b>
<b>600 Supplies</b>				
610 General Supplies				1,780.22
650 Supplies & Fees – Technology Related				16,929.91
<b>Total Supplies</b>				<b>\$18,710.13</b>
<b>800 Other Objects</b>				
810 Dues and Fees				225.00
<b>Total Other Objects</b>				<b>\$225.00</b>
<b>Total 2831 Supervision of Staff Services</b>				<b>\$244,137.75</b>

General Fund (10)

	<u>Elementary</u>	<u>Secondary</u>	<u>Federal</u>	<u>Total</u>
<b>2834 Staff Development Services – Non-Instructional, Certified Staff Only</b>				
<b>200 Personnel Services – Employee Benefits</b>				
240 Tuition Reimbursement				75,377.00
<b>Total Personnel Services – Employee Benefits</b>				<b>\$75,377.00</b>
<b>300 Purchased Professional and Technical Services</b>				
360 Employee Training and Development Services				4,785.90
<b>Total Purchased Professional and Technical Services</b>				<b>\$4,785.90</b>
<b>500 Other Purchased Services</b>				
580 Travel				5,363.82
<b>Total Other Purchased Services</b>				<b>\$5,363.82</b>
<b>Total 2834 Staff Development Services – Non-Instructional, Certified Staff Only</b>				<b>\$85,526.72</b>

General Fund (10)

	<u>Elementary</u>	<u>Secondary</u>	<u>Federal</u>	<u>Total</u>
<b>2836 Staff Development Services – Non-Instructional, Non-Certified Staff Only</b>				
<b>200 Personnel Services – Employee Benefits</b>				
240 Tuition Reimbursement				12,314.00
<b>Total Personnel Services – Employee Benefits</b>				<b>\$12,314.00</b>
<b>300 Purchased Professional and Technical Services</b>				
360 Employee Training and Development Services				2,365.70
<b>Total Purchased Professional and Technical Services</b>				<b>\$2,365.70</b>
<b>Total 2836 Staff Development Services – Non-Instructional, Non-Certified Staff Only</b>				<b>\$14,679.70</b>

General Fund (10)

2839 Other Staff Services

Elementary

Secondary

Federal

Total

100 Personnel Services – Salaries

100 Personnel Services – Salaries

11,512.02

**Total Personnel Services – Salaries**

**\$11,512.02**

200 Personnel Services – Employee Benefits

210 Group Insurance – Contracted Provider

2,220.70

220 Social Security Contributions

880.68

**Total Personnel Services – Employee Benefits**

**\$3,101.38**

300 Purchased Professional and Technical Services

329 Professional Educational Services – Other

3,911.40

**Total Purchased Professional and Technical Services**

**\$3,911.40**

**Total 2839 Other Staff Services**

**\$18,524.80**

General Fund (10)

	<u>Elementary</u>	<u>Secondary</u>	<u>Federal</u>	<u>Total</u>
<b>2900 Other Support Services</b>				
<b>500 Other Purchased Services</b>				
595 IU Payments By Withholding				29,813.86
<b>Total Other Purchased Services</b>				<b>\$29,813.86</b>
<b>800 Other Objects</b>				
810 Dues and Fees				5,491.71
<b>Total Other Objects</b>				<b>\$5,491.71</b>
<b>Total 2900 Other Support Services</b>				<b>\$35,305.57</b>

General Fund (10)

2910 Support Services Not Listed Elsewhere In the 2000 Series

Elementary

Secondary

Federal

Total

500 Other Purchased Services

595 IU Payments By Withholding

29,813.86

**Total Other Purchased Services**

**\$29,813.86**

800 Other Objects

810 Dues and Fees

5,491.71

**Total Other Objects**

**\$5,491.71**

**Total 2910 Support Services Not Listed Elsewhere In the 2000 Series**

**\$35,305.57**

General Fund (10)

<b>3000 Operation of Non-Instructional Services</b>	<b><u>Total</u></b>
<b>100 Personnel Services – Salaries</b>	
100 Personnel Services – Salaries	560,193.67
<b>Total Personnel Services – Salaries</b>	<b>\$560,193.67</b>
<b>200 Personnel Services – Employee Benefits</b>	
210 Group Insurance – Contracted Provider	25.27
220 Social Security Contributions	42,511.28
230 PSERS Retirement Contributions	139,306.47
270 Group Insurance – Self-Insurance	2,031.11
<b>Total Personnel Services – Employee Benefits</b>	<b>\$183,874.13</b>
<b>300 Purchased Professional and Technical Services</b>	
350 Security / Safety Services	9,377.78
390 Other Purchased Professional and Technical Services	90,112.17
<b>Total Purchased Professional and Technical Services</b>	<b>\$99,489.95</b>
<b>400 Purchased Property Services</b>	
440 Rentals	97,441.32
<b>Total Purchased Property Services</b>	<b>\$97,441.32</b>
<b>500 Other Purchased Services</b>	
510 Student Transportation Services	56,877.95
520 Insurance – General	22,885.00
<b>Total Other Purchased Services</b>	<b>\$79,762.95</b>
<b>600 Supplies</b>	
610 General Supplies	114,202.55
650 Supplies & Fees – Technology Related	8,600.00
<b>Total Supplies</b>	<b>\$122,802.55</b>
<b>700 Property</b>	
752 Capital Equipment – Original and Additional	19,641.47
<b>Total Property</b>	<b>\$19,641.47</b>
<b>800 Other Objects</b>	
810 Dues and Fees	19,272.12
860 Grants To Municipal and Community Service Organizations	15,000.00
890 Miscellaneous Expenditures	3,879.87
<b>Total Other Objects</b>	<b>\$38,151.99</b>
<b>Total 3000 Operation of Non-Instructional Services</b>	<b>\$1,201,358.03</b>

**General Fund (10)**

**3200 Student Activities**

Elementary                      Secondary                      Federal                      Total

<b>100</b>	<b><u>Personnel Services – Salaries</u></b>			
	100 Personnel Services – Salaries			560,193.67
<b>Total Personnel Services – Salaries</b>				<b>\$560,193.67</b>
<b>200</b>	<b><u>Personnel Services – Employee Benefits</u></b>			
	210 Group Insurance – Contracted Provider			25.27
	220 Social Security Contributions			42,511.28
	230 PSERS Retirement Contributions			139,306.47
	270 Group Insurance – Self-Insurance			2,031.11
<b>Total Personnel Services – Employee Benefits</b>				<b>\$183,874.13</b>
<b>300</b>	<b><u>Purchased Professional and Technical Services</u></b>			
	350 Security / Safety Services			9,377.78
	390 Other Purchased Professional and Technical Services			72,479.00
<b>Total Purchased Professional and Technical Services</b>				<b>\$81,856.78</b>
<b>400</b>	<b><u>Purchased Property Services</u></b>			
	440 Rentals			97,441.32
<b>Total Purchased Property Services</b>				<b>\$97,441.32</b>
<b>500</b>	<b><u>Other Purchased Services</u></b>			
	510 Student Transportation Services			56,877.95
	520 Insurance – General			22,885.00
<b>Total Other Purchased Services</b>				<b>\$79,762.95</b>
<b>600</b>	<b><u>Supplies</u></b>			
	610 General Supplies			114,202.55
	650 Supplies & Fees – Technology Related			8,600.00
<b>Total Supplies</b>				<b>\$122,802.55</b>
<b>700</b>	<b><u>Property</u></b>			
	752 Capital Equipment – Original and Additional			19,641.47
<b>Total Property</b>				<b>\$19,641.47</b>
<b>800</b>	<b><u>Other Objects</u></b>			
	810 Dues and Fees			19,272.12
<b>Total Other Objects</b>				<b>\$19,272.12</b>
<b>Total 3200 Student Activities</b>				<b>\$1,164,844.99</b>

General Fund (10)

3300 Community Services

Elementary

Secondary

Federal

Total

300 Purchased Professional and Technical Services

390 Other Purchased Professional and Technical Services

17,633.17

**Total Purchased Professional and Technical Services**

**\$17,633.17**

800 Other Objects

860 Grants To Municipal and Community Service Organizations

15,000.00

890 Miscellaneous Expenditures

3,879.87

**Total Other Objects**

**\$18,879.87**

**Total 3300 Community Services**

**\$36,513.04**

**General Fund (10)**

**5000 Other Expenditures and Financing Uses**

**Total**

**800 Other Objects**

830 Interest	2,551,164.25
880 Refunds of Prior Years' Receipts	6,325.44

<b>Total Other Objects</b>	<b>\$2,557,489.69</b>
----------------------------	-----------------------

**900 Other Uses of Funds**

910 Redemption of Principal	3,470,000.00
932 Capital Reserve Fund Transfers Applicable To Fund 32	2,134,271.73

<b>Total Other Uses of Funds</b>	<b>\$5,604,271.73</b>
----------------------------------	-----------------------

<b>Total 5000 Other Expenditures and Financing Uses</b>	<b>\$8,161,761.42</b>
---	-----------------------

General Fund (10)

5100 Debt Service / Other Expenditures and Financing Uses	<u>Elementary</u>	<u>Secondary</u>	<u>Federal</u>	<u>Total</u>
800 <u>Other Objects</u>				
830 Interest				2,551,164.25
880 Refunds of Prior Years' Receipts				6,325.44
<b>Total Other Objects</b>				<b>\$2,557,489.69</b>
900 <u>Other Uses of Funds</u>				
910 Redemption of Principal				3,470,000.00
<b>Total Other Uses of Funds</b>				<b>\$3,470,000.00</b>
<b>Total 5100 Debt Service / Other Expenditures and Financing Uses</b>				<b>\$6,027,489.69</b>

General Fund (10)

	<u>Elementary</u>	<u>Secondary</u>	<u>Federal</u>	<u>Total</u>
<b>5110 Debt Service</b>				
<b>800 Other Objects</b>				
830 Interest				2,551,164.25
<b>Total Other Objects</b>				<b>\$2,551,164.25</b>
<b>900 Other Uses of Funds</b>				
910 Redemption of Principal				3,470,000.00
<b>Total Other Uses of Funds</b>				<b>\$3,470,000.00</b>
<b>Total 5110 Debt Service</b>				<b>\$6,021,164.25</b>

LEA : 113364403 Manheim Central SD

Printed 1/4/2021 10:26:54 AM

General Fund (10)

5130 Refund of Prior Year Revenues / Receipts	<u>Elementary</u>	<u>Secondary</u>	<u>Federal</u>	<u>Total</u>
800 <u>Other Objects</u>				
880 Refunds of Prior Years' Receipts				6,325.44
<b>Total Other Objects</b>				<b>\$6,325.44</b>
<b>Total 5130 Refund of Prior Year Revenues / Receipts</b>				<b>\$6,325.44</b>

General Fund (10)

	<u>Elementary</u>	<u>Secondary</u>	<u>Federal</u>	<u>Total</u>
<b>5200 Interfund Transfers – Out</b>				
<b>900 Other Uses of Funds</b>				
932 Capital Reserve Fund Transfers Applicable To Fund 32				2,134,271.73
<b>Total Other Uses of Funds</b>				<b>\$2,134,271.73</b>
<b>Total 5200 Interfund Transfers – Out</b>				<b>\$2,134,271.73</b>

LEA : 113364403 Manheim Central SD

Printed 1/4/2021 10:26:54 AM

General Fund (10)

5230 Capital Projects Fund Transfers

Elementary

Secondary

Federal

Total

900 Other Uses of Funds

932 Capital Reserve Fund Transfers Applicable To Fund 32

2,134,271.73

**Total Other Uses of Funds**

**\$2,134,271.73**

**Total 5230 Capital Projects Fund Transfers**

**\$2,134,271.73**

**Capital Reserve Fund - § 1431 (32)**

**2000 Support Services**

**300 Purchased Professional and Technical Services**

330 Other Professional Services 730.00

**Total Purchased Professional and Technical Services \$730.00**

**400 Purchased Property Services**

430 Repairs and Maintenance Services (6,250.67)

**Total Purchased Property Services (\$6,250.67)**

**700 Property**

752 Capital Equipment – Original and Additional 810,345.61

758 Capitalized Technology Software - Original 12,807.50

**Total Property \$823,153.11**

**Total 2000 Support Services \$817,632.44**

Capital Reserve Fund - § 1431 (32)

2500 Support Services – Business

Elementary

Secondary

Federal

Total

300 Purchased Professional and Technical Services

330 Other Professional Services

730.00

**Total Purchased Professional and Technical Services**

**\$730.00**

700 Property

758 Capitalized Technology Software - Original

12,807.50

**Total Property**

**\$12,807.50**

**Total 2500 Support Services – Business**

**\$13,537.50**

Capital Reserve Fund - § 1431 (32)

2510 Fiscal Services

Elementary

Secondary

Federal

Total

300 Purchased Professional and Technical Services

330 Other Professional Services

730.00

**Total Purchased Professional and Technical Services**

**\$730.00**

700 Property

758 Capitalized Technology Software - Original

12,807.50

**Total Property**

**\$12,807.50**

**Total 2510 Fiscal Services**

**\$13,537.50**

Capital Reserve Fund - § 1431 (32)

2511 Supervision of Fiscal Services - Head of Component

Elementary

Secondary

Federal

Total

300 Purchased Professional and Technical Services

330 Other Professional Services

730.00

**Total Purchased Professional and Technical Services**

**\$730.00**

700 Property

758 Capitalized Technology Software - Original

12,807.50

**Total Property**

**\$12,807.50**

**Total 2511 Supervision of Fiscal Services - Head of Component**

**\$13,537.50**

Capital Reserve Fund - § 1431 (32)

2600 Operation and Maintenance of Plant Services

Elementary

Secondary

Federal

Total

400 Purchased Property Services

430 Repairs and Maintenance Services

(6,250.67)

**Total Purchased Property Services**

**(\$6,250.67)**

700 Property

752 Capital Equipment – Original and Additional

785,960.80

**Total Property**

**\$785,960.80**

**Total 2600 Operation and Maintenance of Plant Services**

**\$779,710.13**

LEA : 113364403 Manheim Central SD

Printed 1/4/2021 10:26:41 AM

Capital Reserve Fund - § 1431 (32)

	<u>Elementary</u>	<u>Secondary</u>	<u>Federal</u>	<u>Total</u>
<b>2620 Operation of Buildings Services</b>				
<b>400 Purchased Property Services</b>				
430 Repairs and Maintenance Services				(6,250.67)
<b>Total Purchased Property Services</b>				<b>(\$6,250.67)</b>
<b>700 Property</b>				
752 Capital Equipment – Original and Additional				326,717.69
<b>Total Property</b>				<b>\$326,717.69</b>
<b>Total 2620 Operation of Buildings Services</b>				<b>\$320,467.02</b>

LEA : 113364403 Manheim Central SD

Printed 1/4/2021 10:26:41 AM

Capital Reserve Fund - § 1431 (32)

2630 Care and Upkeep of Grounds Services

Elementary

Secondary

Federal

Total

700 Property

752 Capital Equipment – Original and Additional

407,260.00

<b>Total Property</b>				<b>\$407,260.00</b>
<b>Total 2630 Care and Upkeep of Grounds Services</b>				<b>\$407,260.00</b>

LEA : 113364403 Manheim Central SD

Printed 1/4/2021 10:26:41 AM

Capital Reserve Fund - § 1431 (32)

	<u>Elementary</u>	<u>Secondary</u>	<u>Federal</u>	<u>Total</u>
<b>2650 Vehicle Operation and Maintenance Services (Other Than Student Transportation Vehicles)</b>				
<b>700 Property</b>				
752 Capital Equipment – Original and Additional				36,270.00
<b>Total Property</b>				<b>\$36,270.00</b>
<b>Total 2650 Vehicle Operation and Maintenance Services (Other Than Student Transportation Vehicles)</b>				<b>\$36,270.00</b>

LEA : 113364403 Manheim Central SD

Printed 1/4/2021 10:26:41 AM

Capital Reserve Fund - § 1431 (32)

2690 Other Operation and Maintenance of Plant Services

Elementary

Secondary

Federal

Total

700 Property

752 Capital Equipment – Original and Additional

15,713.11

**Total Property**

**\$15,713.11**

**Total 2690 Other Operation and Maintenance of Plant Services**

**\$15,713.11**

LEA : 113364403 Manheim Central SD

Printed 1/4/2021 10:26:41 AM

Capital Reserve Fund - § 1431 (32)

2800 Support Services – Central

Elementary

Secondary

Federal

Total

700 Property

752 Capital Equipment – Original and Additional

24,384.81

**Total Property**

**\$24,384.81**

**Total 2800 Support Services – Central**

**\$24,384.81**

LEA : 113364403 Manheim Central SD

Printed 1/4/2021 10:26:41 AM

Capital Reserve Fund - § 1431 (32)

2820 Information Services

Elementary

Secondary

Federal

Total

700 Property

752 Capital Equipment – Original and Additional

24,384.81

**Total Property**

**\$24,384.81**

**Total 2820 Information Services**

**\$24,384.81**

LEA : 113364403 Manheim Central SD

Printed 1/4/2021 10:26:41 AM

Capital Reserve Fund - § 1431 (32)

2821 Supervision of Information Services

Elementary

Secondary

Federal

Total

700 Property

752 Capital Equipment – Original and Additional

24,384.81

**Total Property**

**\$24,384.81**

**Total 2821 Supervision of Information Services**

**\$24,384.81**

**Other Capital Projects Fund (39)**

**2000 Support Services**

**400 Purchased Property Services**

440 Rentals 429,992.00

**Total Purchased Property Services \$429,992.00**

**800 Other Objects**

810 Dues and Fees 167,044.40

**Total Other Objects \$167,044.40**

**Total 2000 Support Services \$597,036.40**

LEA : 113364403 Manheim Central SD

Printed 1/4/2021 10:26:43 AM

Other Capital Projects Fund (39)

2300 Support Services – Administration

Elementary

Secondary

Federal

Total

800 Other Objects

810 Dues and Fees

167,044.40

**Total Other Objects**

**\$167,044.40**

**Total 2300 Support Services – Administration**

**\$167,044.40**

LEA : 113364403 Manheim Central SD

Printed 1/4/2021 10:26:43 AM

Other Capital Projects Fund (39)

2390 Other Administration Services

Elementary

Secondary

Federal

Total

800 Other Objects

810 Dues and Fees

167,044.40

**Total Other Objects**

**\$167,044.40**

**Total 2390 Other Administration Services**

**\$167,044.40**

LEA : 113364403 Manheim Central SD

Printed 1/4/2021 10:26:43 AM

Other Capital Projects Fund (39)

2800 Support Services – Central

Elementary

Secondary

Federal

Total

400 Purchased Property Services

440 Rentals

429,992.00

**Total Purchased Property Services**

**\$429,992.00**

**Total 2800 Support Services – Central**

**\$429,992.00**

LEA : 113364403 Manheim Central SD

Printed 1/4/2021 10:26:43 AM

Other Capital Projects Fund (39)

2820 Information Services

400 Purchased Property Services

440 Rentals

Elementary

Secondary

Federal

Total

429,992.00

**Total Purchased Property Services**

**\$429,992.00**

**Total 2820 Information Services**

**\$429,992.00**

LEA : 113364403 Manheim Central SD

Printed 1/4/2021 10:26:43 AM

Other Capital Projects Fund (39)

2821 Supervision of Information Services

Elementary

Secondary

Federal

Total

400 Purchased Property Services

440 Rentals

429,992.00

**Total Purchased Property Services**

**\$429,992.00**

**Total 2821 Supervision of Information Services**

**\$429,992.00**

**Other Capital Projects Fund (39)**

**4000 Facilities Acquisition, Construction and Improvement Services**

**Total**

**300 Purchased Professional and Technical Services**

330 Other Professional Services

2,172,259.69

**Total Purchased Professional and Technical Services**

**\$2,172,259.69**

**Total 4000 Facilities Acquisition, Construction and Improvement Services**

**\$2,172,259.69**

Other Capital Projects Fund (39)

4500 Building Acquisition and Construction Services – Original and Additional

Elementary

Secondary

Federal

Total

300 Purchased Professional and Technical Services

330 Other Professional Services

829,589.94

**Total Purchased Professional and Technical Services**

**\$829,589.94**

**Total 4500 Building Acquisition and Construction Services – Original and Additional**

**\$829,589.94**

LEA : 113364403 Manheim Central SD

Printed 1/4/2021 10:26:49 AM

Other Capital Projects Fund (39)

4600 Existing Building Improvement Services

Elementary

Secondary

Federal

Total

300 Purchased Professional and Technical Services

330 Other Professional Services

1,342,669.75

**Total Purchased Professional and Technical Services**

**\$1,342,669.75**

**Total 4600 Existing Building Improvement Services**

**\$1,342,669.75**

**Other Capital Projects Fund (39)**

**5000 Other Expenditures and Financing Uses**

**Total**

**800 Other Objects**

830 Interest 171,893.75

**Total Other Objects \$171,893.75**

**900 Other Uses of Funds**

910 Redemption of Principal 8,965,000.00

**Total Other Uses of Funds \$8,965,000.00**

**Total 5000 Other Expenditures and Financing Uses \$9,136,893.75**

Other Capital Projects Fund (39)

5100 Debt Service / Other Expenditures and Financing Uses	<u>Elementary</u>	<u>Secondary</u>	<u>Federal</u>	<u>Total</u>
800 <u>Other Objects</u>				
830 Interest				171,893.75
<b>Total Other Objects</b>				<b>\$171,893.75</b>
900 <u>Other Uses of Funds</u>				
910 Redemption of Principal				8,965,000.00
<b>Total Other Uses of Funds</b>				<b>\$8,965,000.00</b>
<b>Total 5100 Debt Service / Other Expenditures and Financing Uses</b>				<b>\$9,136,893.75</b>

Other Capital Projects Fund (39)

	<u>Elementary</u>	<u>Secondary</u>	<u>Federal</u>	<u>Total</u>
<b>5120 Debt Service – Refunded Bonds</b>				
<b>800 Other Objects</b>				
830 Interest				171,893.75
<b>Total Other Objects</b>				<b>\$171,893.75</b>
<b>900 Other Uses of Funds</b>				
910 Redemption of Principal				8,965,000.00
<b>Total Other Uses of Funds</b>				<b>\$8,965,000.00</b>
<b>Total 5120 Debt Service – Refunded Bonds</b>				<b>\$9,136,893.75</b>

	<u>General Fund(10)</u>	<u>Student Sponsored Activity Fund(21)</u>	<u>Public Purpose Trust(27)</u>	<u>Other Compt Approved (28)</u>	<u>Athletic / Activity(29)</u>
<b>1000 Instruction</b>					
1100 Regular Programs - Elementary / Secondary	22,585,941.14				
1200 Special Programs - Elementary / Secondary	7,929,627.34				
1300 Vocational Education	1,290,282.25				
1400 Other Instructional Programs - Elementary / Secondary	97,612.06				
1500 Nonpublic School Programs	40,401.91				
1800 Pre-Kindergarten	78,089.71				
<b>Total Instruction</b>	<b>\$32,021,954.41</b>				
<b>2000 Support Services</b>					
2100 Support Services - Students	1,587,611.19				
2200 Support Services - Instructional Staff	1,714,931.40				
2300 Support Services - Administration	2,624,633.85				
2400 Support Services - Pupil Health	446,892.95				
2500 Support Services - Business	761,918.68				
2600 Operation and Maintenance of Plant Services	3,704,836.40				
2700 Student Transportation Services	3,143,173.60				
2800 Support Services - Central	1,531,089.17				
2900 Other Support Services	35,305.57				
<b>Total Support Services</b>	<b>\$15,550,392.81</b>				
<b>3000 Operation of Non-Instructional Services</b>					
3200 Student Activities	1,164,844.99				
3300 Community Services	36,513.04				
<b>Total Operation of Non-Instructional Services</b>	<b>\$1,201,358.03</b>				
<b>4000 Facilities Acquisition, Construction and Improvement Services</b>					
4500 Building Acquisition and Construction Services - Original and Additional					
4600 Existing Building Improvement Services					
<b>Total Facilities Acquisition, Construction and Improvement Services</b>					
<b>5000 Other Expenditures and Financing Uses</b>					
5100 Debt Service / Other Expenditures and Financing Uses	6,027,489.69				
5200 Interfund Transfers - Out	2,134,271.73				
<b>Total Other Expenditures and Financing Uses</b>	<b>\$8,161,761.42</b>				
<b>TOTAL ACTUAL EXPENDITURES &amp; OTHER FINANCING USES</b>	<b>\$56,935,466.67</b>				

	<u>Capital Reserve (690.1850)(31)</u>	<u>Capital Reserve (1431)(32)</u>	<u>Other Capital Projects Fund(39)</u>	<u>Debt Service(40)</u>	<u>Permanent(90)</u>
<b>1000 Instruction</b>					
1100 Regular Programs - Elementary / Secondary					
1200 Special Programs - Elementary / Secondary					
1300 Vocational Education					
1400 Other Instructional Programs - Elementary / Secondary					
1500 Nonpublic School Programs					
1800 Pre-Kindergarten					
<b>Total Instruction</b>					
<b>2000 Support Services</b>					
2100 Support Services - Students					
2200 Support Services - Instructional Staff					
2300 Support Services - Administration			167,044.40		
2400 Support Services - Pupil Health					
2500 Support Services - Business		13,537.50			
2600 Operation and Maintenance of Plant Services		779,710.13			
2700 Student Transportation Services					
2800 Support Services - Central		24,384.81		429,992.00	
2900 Other Support Services					
<b>Total Support Services</b>		<b>\$817,632.44</b>	<b>\$597,036.40</b>		
<b>3000 Operation of Non-Instructional Services</b>					
3200 Student Activities					
3300 Community Services					
<b>Total Operation of Non-Instructional Services</b>					
<b>4000 Facilities Acquisition, Construction and Improvement Services</b>					
4500 Building Acquisition and Construction Services - Original and Additional			829,589.94		
4600 Existing Building Improvement Services			1,342,669.75		
<b>Total Facilities Acquisition, Construction and Improvement Services</b>			<b>\$2,172,259.69</b>		
<b>5000 Other Expenditures and Financing Uses</b>					
5100 Debt Service / Other Expenditures and Financing Uses			9,136,893.75		
5200 Interfund Transfers - Out					
<b>Total Other Expenditures and Financing Uses</b>			<b>\$9,136,893.75</b>		
<b>TOTAL ACTUAL EXPENDITURES &amp; OTHER FINANCING USES</b>		<b>\$817,632.44</b>	<b>\$11,906,189.84</b>		

**Total**

<b>1000 <u>Instruction</u></b>	
1100 Regular Programs - Elementary / Secondary	22,585,941.14
1200 Special Programs - Elementary / Secondary	7,929,627.34
1300 Vocational Education	1,290,282.25
1400 Other Instructional Programs - Elementary / Secondary	97,612.06
1500 Nonpublic School Programs	40,401.91
1800 Pre-Kindergarten	78,089.71
<b>Total Instruction</b>	<b>\$32,021,954.41</b>
<b>2000 <u>Support Services</u></b>	
2100 Support Services - Students	1,587,611.19
2200 Support Services - Instructional Staff	1,714,931.40
2300 Support Services - Administration	2,791,678.25
2400 Support Services - Pupil Health	446,892.95
2500 Support Services - Business	775,456.18
2600 Operation and Maintenance of Plant Services	4,484,546.53
2700 Student Transportation Services	3,143,173.60
2800 Support Services - Central	1,985,465.98
2900 Other Support Services	35,305.57
<b>Total Support Services</b>	<b>\$16,965,061.65</b>
<b>3000 <u>Operation of Non-Instructional Services</u></b>	
3200 Student Activities	1,164,844.99
3300 Community Services	36,513.04
<b>Total Operation of Non-Instructional Services</b>	<b>\$1,201,358.03</b>
<b>4000 <u>Facilities Acquisition, Construction and Improvement Services</u></b>	
4500 Building Acquisition and Construction Services - Original and Additional	829,589.94
4600 Existing Building Improvement Services	1,342,669.75
<b>Total Facilities Acquisition, Construction and Improvement Services</b>	<b>\$2,172,259.69</b>
<b>5000 <u>Other Expenditures and Financing Uses</u></b>	
5100 Debt Service / Other Expenditures and Financing Uses	15,164,383.44
5200 Interfund Transfers - Out	2,134,271.73
<b>Total Other Expenditures and Financing Uses</b>	<b>\$17,298,655.17</b>
<b>TOTAL ACTUAL EXPENDITURES &amp; OTHER FINANCING USES</b>	<b>\$69,659,288.95</b>

**PSERS Salary Data (Salary Data should relate to the General Fund only)**

<b>Amount Description</b>	<b>Amount</b>
Total Salary Base for salaries subject to PSERS withholding	21,247,011.40
Total Federally Funded salaries subject to PSERS withholding	503,359.00
	<hr/>

**Title I Expenditure Data**

<b>Amount Description</b>	<b>Amount</b>
Expenditures Funded with Current Title I Funds	472,086.00
Expenditures Funded with Carry over Title I Funds	1,795.01
<b>Total Title I Expenditure Data</b>	<hr/> <b>\$473,881.01</b> <hr/>

**Benefits for Staff Relative to Collective Bargaining Agreements**

	<b>OBJECT</b>	<b>COVERED</b>	<b>NOT COVERED</b>	<b>TOTAL</b>
<b>10 General Fund</b>				
	211 Medical Insurance			
	212 Dental Insurance			
	215 Eye Care Insurance	4,464.72	2,678.83	7,143.55
	216 Prescription Insurance			
	271 Self-Insurance Medical Benefits	2,009,278.53	1,205,567.12	3,214,845.65
	272 Self-Insurance Dental Benefits	83,907.38	50,344.43	134,251.81
	275 Self-Insurance Eye Care Benefits			
	276 Self-Insurance Prescription Benefits			
		<b>FUND TOTAL</b>	<b>\$2,097,650.63</b>	<b>\$1,258,590.38</b>
<b>50 Enterprise Fund</b>	<b>No Self Insurance data to report</b>			
	211 Medical Insurance			
	212 Dental Insurance			
	215 Eye Care Insurance			
	216 Prescription Insurance			
	271 Self-Insurance Medical Benefits			
	272 Self-Insurance Dental Benefits			
	275 Self-Insurance Eye Care Benefits			
	276 Self-Insurance Prescription Benefits			
		<b>FUND TOTAL</b>		
<b>60 Internal Service Fund</b>				
	211 Medical Insurance			
	212 Dental Insurance			
	215 Eye Care Insurance			
	216 Prescription Insurance			
	271 Self-Insurance Medical Benefits	2,468,222.70	1,480,933.62	3,949,156.32
	272 Self-Insurance Dental Benefits	128,423.58	77,054.15	205,477.73
	275 Self-Insurance Eye Care Benefits			
	276 Self-Insurance Prescription Benefits	441,475.88	264,885.53	706,361.41
		<b>FUND TOTAL</b>	<b>\$3,038,122.16</b>	<b>\$1,822,873.30</b>
<b>Total of All Funds</b>		<b>\$5,135,772.79</b>	<b>\$3,081,463.68</b>	<b>\$8,217,236.47</b>

LEA : 113364403 Manheim Central SD

Printed 1/4/2021 10:27:26 AM

Function	Special Education (Prior Year)	Nonspecial Education (Prior Year)	Total (Prior Year)	Special Education (Current Year)	Nonspecial Education (Current Year)	Total (Current Year)
2120 Guidance Services	146,540.75	832,355.36	978,896.11	168,061.44	859,837.26	1,027,898.70
2140 Psychological Services	293,839.99	73,460.00	367,299.99	274,157.46	68,539.37	342,696.83
2150 Speech Pathology and Audiology Services						
2160 Social Work Services	13,257.24	75,301.51	88,558.75	14,905.29	76,258.55	91,163.84
2260 Instruction and Curriculum Development Services	396,978.78	99,244.70	496,223.48	421,617.90	105,404.47	527,022.37
2350 Legal and Accounting Services	1,170.00	105,277.95	106,447.95	46,837.86	14,798.50	61,636.36
2420 Medical Services						
2440 Nursing Services	71,657.18	407,014.69	478,671.87	73,067.00	373,825.95	446,892.95
2700 Student Transportation Services	739,566.10	2,383,602.71	3,123,168.81	809,499.86	2,333,673.74	3,143,173.60
<b>Total</b>	<b>\$1,663,010.04</b>	<b>\$3,976,256.92</b>	<b>\$5,639,266.96</b>	<b>\$1,808,146.81</b>	<b>\$3,832,337.84</b>	<b>\$5,640,484.65</b>

(PRINCIPAL AMOUNTS ONLY)

**GOVERNMENTAL FUNDS/ ACTIVITIES**

	Short-Term Borrowing	General Obligation Bonds/Notes	Authority Building Obligations	Other Long-Term Debt	Other Post-Employment Benefits (OPEB)	Compensated Absences	Net Pension Liability	Total
1. Debt at Beginning of Fiscal Year		68,285,000.00		2,188,299.00	4,988,271.00	481,133.00	71,099,494.00	147,042,197.00
2. Additional Debt Incurred During Year		8,885,000.00		429,992.00	205,443.00	55,699.00		9,576,134.00
3. Retirements and Repayments		12,435,000.00		727,366.00			702,758.00	13,865,124.00
4. Debt at End of Fiscal Year		64,735,000.00		1,890,925.00	5,193,714.00	536,832.00	70,396,736.00	142,753,207.00
5. Accreted Interest at End Of Fiscal Year								
6. Total Debt and Accreted Interest		64,735,000.00		1,890,925.00	5,193,714.00	536,832.00	70,396,736.00	142,753,207.00
7. Current Portion P&I - Due within 1 year		6,086,458.00		350,446.00				6,436,904.00
8. Interest Paid during current fiscal year		2,724,207.35		31,049.58				2,755,256.93

(PRINCIPAL AMOUNTS ONLY)

**PROPRIETARY FUNDS**

	Short-Term Borrowing	General Obligation Bonds/Notes	Authority Building Obligations	Other Long-Term Debt	Other Post-Employment Benefits (OPEB)	Compensated Absences	Net Pension Liability	Total
1. Debt at Beginning of Fiscal Year					89,473.00		2,060,073.00	2,149,546.00
2. Additional Debt Incurred During Year					359.00			359.00
3. Retirements and Repayments							84,114.00	84,114.00
4. Debt at End of Fiscal Year					89,832.00		1,975,959.00	2,065,791.00
5. Accreted Interest at End Of Fiscal Year								
6. Total Debt and Accreted Interest					89,832.00		1,975,959.00	2,065,791.00
7. Current Portion P&I - Due within 1 year								
8. Interest Paid during current fiscal year								

**Total Principal and Interest Payments Made by Your School - All Funds**

Function	Fund		Principal (910)	Principal (920)	Interest (830)	Total (Principal +Interest)	Misc Other Uses (990)
5110	10	General Fund	3,470,000.00		2,551,164.25	6,021,164.25	
5110	20	Special Revenue Funds					
5110	30	Capital Projects Funds					
5110	40	Debt Service Fund					
5110	90	Permanent Fund					
5120	10	General Fund					
5120	20	Special Revenue Funds					
5120	30	Capital Projects Funds	8,965,000.00		171,893.75	9,136,893.75	
5120	40	Debt Service Fund					

<b>Total Debt Payments - Governmental Funds</b>			<b>\$12,435,000.00</b>		<b>\$2,723,058.00</b>	<b>\$15,158,058.00</b>	
---	--	--	------------------------	--	-----------------------	------------------------	--

Function	Fund		Principal (910)	Principal (920)	Interest (830)	Total (Principal +Interest)
5110	50	Enterprise Fund				
5110	60	Internal Service Fund				
5120	50	Enterprise Fund				
5120	60	Internal Service Fund				

<b>Total Debt Payments - Proprietary Funds</b>							
--	--	--	--	--	--	--	--

**Debt Details**  
**Governmental Funds/ Activities**

Debt Category	Debt Issue Date (MM/YYYY)	Principal Amounts Only			Debt at End of Fiscal Year	Current Portion Due Within One Year (Principal and Interest)	Interest Paid During Fiscal Year
		Debt at Beginning of Fiscal Year	Additions	Reductions / Repayments			
General Obligation Bonds/Notes – CIB	11/2019		8,885,000.00	5,000.00	8,880,000.00	257,463.00	185,192.34
General Obligation Bonds/Notes – CIB	05/2018	9,495,000.00		5,000.00	9,490,000.00	349,435.00	344,530.00
General Obligation Bonds/Notes – CIB	06/2017	9,440,000.00		5,000.00	9,435,000.00	381,710.00	376,772.50
General Obligation Bonds/Notes – CIB	09/2016	11,850,000.00		5,000.00	11,845,000.00	502,487.00	497,537.50
General Obligation Bonds/Notes – CIB	09/2016	18,740,000.00		3,445,000.00	15,295,000.00	4,275,200.00	833,000.00
General Obligation Bonds/Notes – CIB	11/2015	9,795,000.00		5,000.00	9,790,000.00	320,163.00	315,281.26
General Obligation Bonds/Notes – CIB	11/2014	8,965,000.00		8,965,000.00			171,893.75
Extended Term Financing Agreements		743,665.00	429,992.00	608,233.00	565,424.00	271,266.00	1.00
Other Long Term Debt/Liabilities		1,444,634.00		119,133.00	1,325,501.00	79,180.00	31,048.58
Compensated Absences		481,133.00	55,699.00		536,832.00		
Other Post-Employment Benefits (OPEB)		4,988,271.00	205,443.00		5,193,714.00		
Net Pension Liability		71,099,494.00		702,758.00	70,396,736.00		
<b>Totals for Debt Entered:</b>		<b>\$147,042,197.00</b>	<b>\$9,576,134.00</b>	<b>\$13,865,124.00</b>	<b>\$142,753,207.00</b>	<b>\$6,436,904.00</b>	<b>\$2,755,256.93</b>

**Bond Details**  
**Proprietary Funds**

Debt Category	Debt Issue Date (MM/YYYY)	Principal Amounts Only			Debt at End of Fiscal Year	Current Portion Due Within One Year (Principal and Interest)	Interest Paid During Fiscal Year
		Debt at Beginning of Fiscal Year	Additions	Reductions / Repayments			
Other Post-Employment Benefits (OPEB)		89,473.00	359.00		89,832.00		
Net Pension Liability		2,060,073.00		84,114.00	1,975,959.00		
<b>Totals for Debt Entered:</b>		<b>\$2,149,546.00</b>	<b>\$359.00</b>	<b>\$84,114.00</b>	<b>\$2,065,791.00</b>		

**General Fund (10)**

**Section 1: Tuition/Purchased Services as Reported within Expenditure Detail**

	Amount
Tuition Reported in General Fund Expenditures 1000-560	2,167,516.90
Purchased Services in General Fund Expenditures 1000-594 and 1000-597	155,443.00
<b>Section 1 Total</b>	<b>\$2,322,959.90</b>

**Section 2: Tuition Paid to Institution Types During Fiscal Year**

	Tuition Paid For Nonspecial Education	Tuition Paid For Special Education	Total
1 1306 Institutions			
2 Institutionalized Children's Programs			
3 Juveniles Incarcerated in Adult Facilities			
4 Residential Treatment Facilities			
5 Other Local Education Agencies	30,851.13	169,330.67	200,181.80
6 Brick and Mortar Charter Schools			
7 Cyber Charter Schools	653,723.40	137,629.50	791,352.90
8 Career and Technology Centers	887,762.16		887,762.16
9 Approved Private Schools	7,110.00	138,034.84	145,144.84
10 PA Chartered Schools for the Deaf and Blind			
11 Private Residential Rehabilitative Institutions		297,872.20	297,872.20
12 Juvenile Detention Centers			
13 Special Program Jointures			
14 Other Tuition Not Included Elsewhere In This Section	646.00		646.00
<b>Section 2 Total</b>	<b>\$1,580,092.69</b>	<b>\$742,867.21</b>	<b>\$2,322,959.90</b>

1 .	<u>Student Transportation Services for Educational Field Trips</u>	5,280.00
2 .	<u>Student Transportation Services for Student Activities</u>	5,800.00
3 .	<u>Rental of Vehicles for Student Transportation Services</u>	
4 .	<u>Capital Reserve Funds</u>	

Include only district-owned transportation expenditures paid from State or local money.  
 DO NOT include federal expenditures or payments to contract service providers.  
 Contracted transportation services should not be recorded on this schedule.

**Food Service / Cafeteria Operations Fund (51)**

**3000 Operation of Non-Instructional Services**

**Total**

**100 Personnel Services – Salaries**

100 Personnel Services – Salaries 604,232.00

**Total Personnel Services – Salaries \$604,232.00**

**200 Personnel Services – Employee Benefits**

210 Group Insurance – Contracted Provider 873.91

220 Social Security Contributions 44,453.01

230 PSERS Retirement Contributions 188,469.46

270 Group Insurance – Self-Insurance 112,876.65

299 All Other Employee Benefits 1,500.00

**Total Personnel Services – Employee Benefits \$348,173.03**

**300 Purchased Professional and Technical Services**

300 Purchased Professional and Technical Services 31.00

**Total Purchased Professional and Technical Services \$31.00**

**400 Purchased Property Services**

430 Repairs and Maintenance Services 28,038.62

**Total Purchased Property Services \$28,038.62**

**500 Other Purchased Services**

580 Travel 637.10

**Total Other Purchased Services \$637.10**

**600 Supplies**

610 General Supplies 52,377.69

620 Energy 387.08

630 Food 641,559.17

650 Supplies & Fees – Technology Related 4,570.00

**Total Supplies \$698,893.94**

**700 Property**

740 Depreciation 25,559.00

**Total Property \$25,559.00**

**800 Other Objects**

810 Dues and Fees 686.00

**Total Other Objects \$686.00**

**Total 3000 Operation of Non-Instructional Services \$1,706,250.69**

Food Service / Cafeteria Operations Fund (51)

	<u>Elementary</u>	<u>Secondary</u>	<u>Federal</u>	<u>Total</u>
<b>3100 Food Services</b>				
<b>100 Personnel Services – Salaries</b>				
100 Personnel Services – Salaries				604,232.00
<b>Total Personnel Services – Salaries</b>				<b>\$604,232.00</b>
<b>200 Personnel Services – Employee Benefits</b>				
210 Group Insurance – Contracted Provider				873.91
220 Social Security Contributions				44,453.01
230 PSERS Retirement Contributions				188,469.46
270 Group Insurance – Self-Insurance				112,876.65
299 All Other Employee Benefits				1,500.00
<b>Total Personnel Services – Employee Benefits</b>				<b>\$348,173.03</b>
<b>300 Purchased Professional and Technical Services</b>				
300 Purchased Professional and Technical Services				31.00
<b>Total Purchased Professional and Technical Services</b>				<b>\$31.00</b>
<b>400 Purchased Property Services</b>				
430 Repairs and Maintenance Services				28,038.62
<b>Total Purchased Property Services</b>				<b>\$28,038.62</b>
<b>500 Other Purchased Services</b>				
580 Travel				637.10
<b>Total Other Purchased Services</b>				<b>\$637.10</b>
<b>600 Supplies</b>				
610 General Supplies				52,377.69
620 Energy				387.08
630 Food				641,559.17
650 Supplies & Fees – Technology Related				4,570.00
<b>Total Supplies</b>				<b>\$698,893.94</b>
<b>700 Property</b>				
740 Depreciation				25,559.00
<b>Total Property</b>				<b>\$25,559.00</b>
<b>800 Other Objects</b>				
810 Dues and Fees				686.00
<b>Total Other Objects</b>				<b>\$686.00</b>
<b>Total 3100 Food Services</b>				<b>\$1,706,250.69</b>

**Internal Service Fund (60)**

<b>1000 Instruction</b>	<u><b>Total</b></u>
<b>200 Personnel Services – Employee Benefits</b>	
270 Group Insurance – Self-Insurance	5,007,301.05
<b>Total Personnel Services – Employee Benefits</b>	<b>\$5,007,301.05</b>
<b>Total 1000 Instruction</b>	<b>\$5,007,301.05</b>

Internal Service Fund (60)

1100 Regular Programs – Elementary / Secondary

Elementary

Secondary

Federal

Total

200 Personnel Services – Employee Benefits

270 Group Insurance – Self-Insurance

5,007,301.05

**Total Personnel Services – Employee Benefits**

**\$5,007,301.05**

**Total 1100 Regular Programs – Elementary / Secondary**

**\$5,007,301.05**

LEA : 113364403 Manheim Central SD

Printed 1/4/2021 10:27:53 AM

Internal Service Fund (60)

1110 Regular Programs

Elementary

Secondary

Federal

Total

200 Personnel Services – Employee Benefits

270 Group Insurance – Self-Insurance

5,007,301.05

**Total Personnel Services – Employee Benefits**

**\$5,007,301.05**

**Total 1110 Regular Programs**

**\$5,007,301.05**

	<u>Food Service(51)</u>	<u>Child Care Operations(52)</u>	<u>Other Enterprise(58)</u>	<u>Internal Service(60)</u>	<u>Total</u>
<b>1000 Instruction</b>					
1100 Regular Programs - Elementary / Secondary				5,007,301.05	5,007,301.05
<b>Total Instruction</b>				<b>\$5,007,301.05</b>	<b>\$5,007,301.05</b>
<b>3000 Operation of Non-Instructional Services</b>					
3100 Food Services	1,706,250.69				1,706,250.69
<b>Total Operation of Non-Instructional Services</b>	<b>\$1,706,250.69</b>				<b>\$1,706,250.69</b>
<b>TOTAL ACTUAL EXPENDITURES &amp; OTHER FINANCING USES</b>	<b>\$1,706,250.69</b>			<b>\$5,007,301.05</b>	<b>\$6,713,551.74</b>

LEA : 113364403 Manheim Central SD

Printed 1/4/2021 10:28:18 AM

Fund	School	School Number	Local Personnel	Local Nonpersonnel	State Personnel	State Nonpersonnel	Federal Personnel	Federal Nonpersonnel	Total	Explanation
10	Baron EL Sch	8461	3,300,369.88	735,212.39	1,332,808.51	296,905.30	186,358.40	5,336.67	5,856,991.15	
	Doe Run El Sch	8422	5,369,543.86	1,275,021.41	2,168,415.67	514,899.68	172,771.05	9,812.05	9,510,463.72	
	Manheim Central MS	7953	7,380,301.66	1,640,297.96	2,980,432.25	662,411.53	174,775.55	12,263.99	12,850,482.94	
	Manheim Central SHS	2618	8,093,137.30	2,130,163.61	3,268,301.02	860,236.97		12,845.79	14,364,684.69	
<b>Total</b>			<b>24,143,352.70</b>	<b>5,780,695.37</b>	<b>9,749,957.45</b>	<b>2,334,453.48</b>	<b>533,905.00</b>	<b>40,258.50</b>	<b>42,582,622.50</b>	