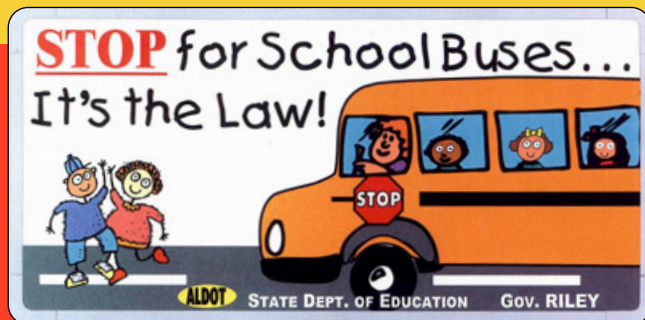


Alabama's NEW School Bus Stop Law

Effective October 1, 2006

"The driver of a vehicle upon meeting or overtaking from either direction any school bus which has stopped for the purpose of receiving or discharging any school children on a highway, on a roadway, on school property, or upon a private road shall bring the vehicle to a complete stop before reaching the school bus ..."

"The driver of a vehicle upon a divided highway having four or more lanes which permits at least two lanes of traffic to travel in opposite directions need not stop the vehicle upon meeting a school bus which is stopped in the opposing roadway ..."



STOP FOR SCHOOL BUSES ... IT'S THE LAW!

1st Offense:\$150 - \$300 Fine

2nd Offense:\$300 - \$500 Fine, 100 hours community service,
30 day driver license suspension

3rd Offense:\$500 - \$1000 Fine, 200 hours community service,
90 day driver license suspension

4th Offense:\$1000 - \$3000 Fine, Class "C" Felony,
one year driver license suspension

**REPORT VIOLATIONS OF THE SCHOOL BUS
PASSING LAW TO LOCAL LAW ENFORCEMENT!**

Alabama Department of Education · Pupil Transportation Section
5303 Gordon Persons Building · 50 North Ripley Street
Montgomery, Alabama 36130-2101
phone: (334) 242-9730 · fax: (334) 353-7953 · www.alsde.edu

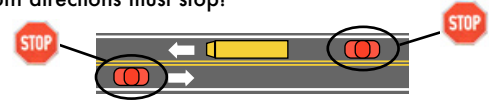


Check our Web site for:

Alabama School Bus Illegal Passing Survey Results
School Bus Safety Brochure
Requirements to Drive a School Bus in Alabama
Alabama Pupil Transportation Facts

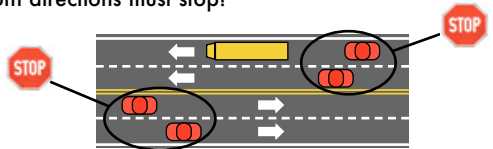
1 Two-lane roadway:

When school bus stops for passengers, all traffic from both directions must stop!



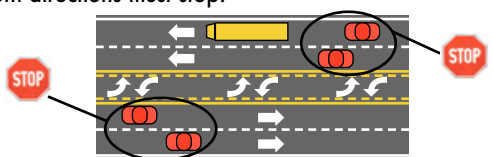
2 Four-lane roadway without a median separation:

When school bus stops for passengers, all traffic from both directions must stop!



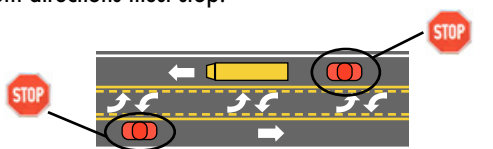
3 Roadway of four lanes or more with a center turning lane:

When school bus stops for passengers, all traffic from both directions must stop!



4 Two-lane roadway with a center turning lane:

When school bus stops for passengers, all traffic from both directions must stop!



5 Divided highway of four lanes or more with a median separation:

When school bus stops for passengers, only traffic following the bus must stop.

