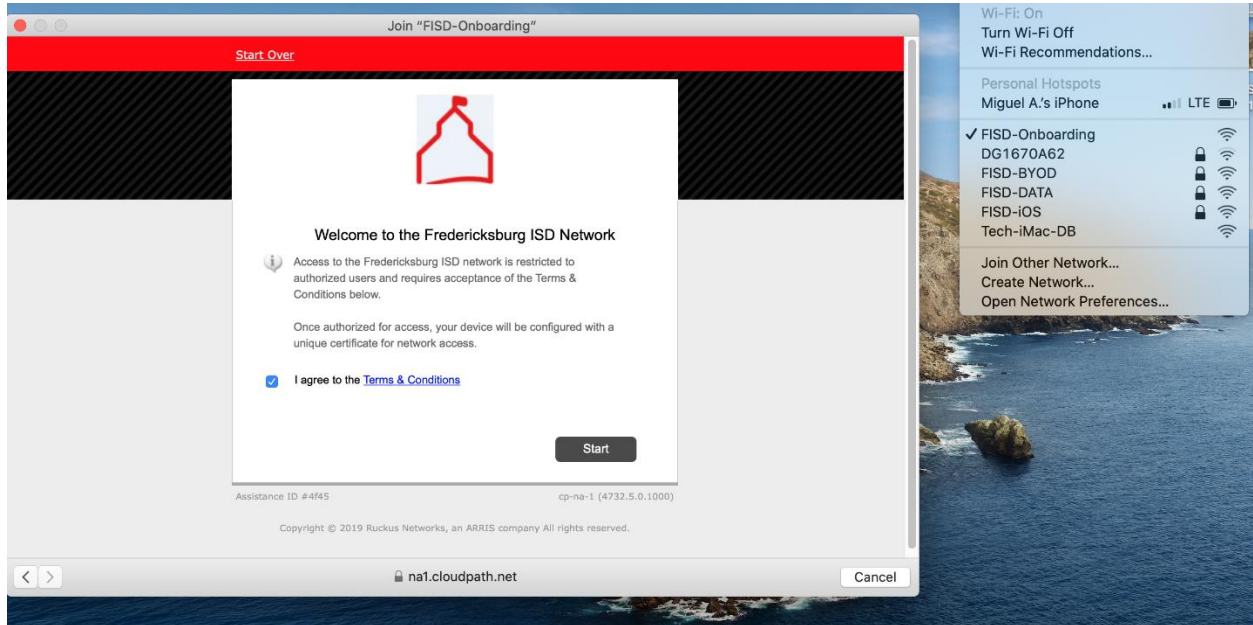


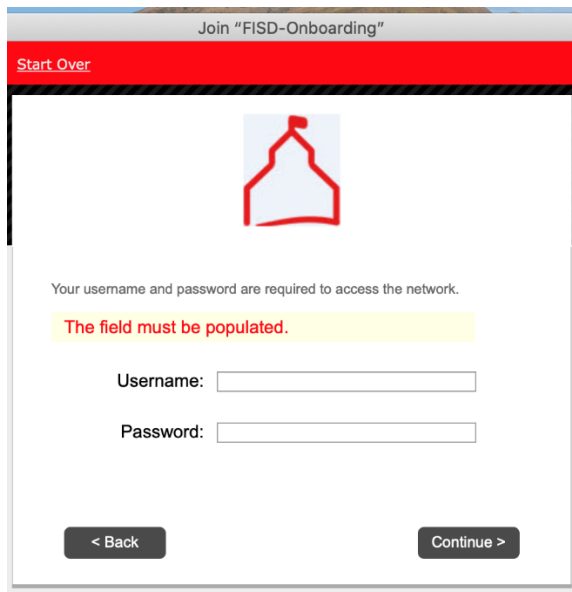
MacOS Onboarding Instructions

Note: Your Mac device must have OS version 10.11 or higher in order to connect to the FISD wireless.

1. Go to your WiFi settings and select FISD-Onboarding.
2. Select Start

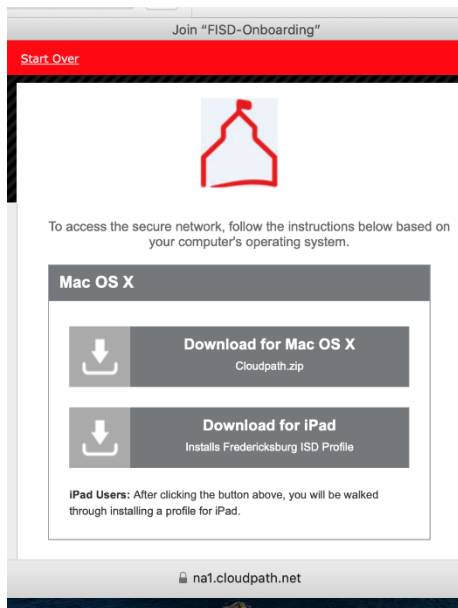


3. Enter your email address and computer password, then click Continue

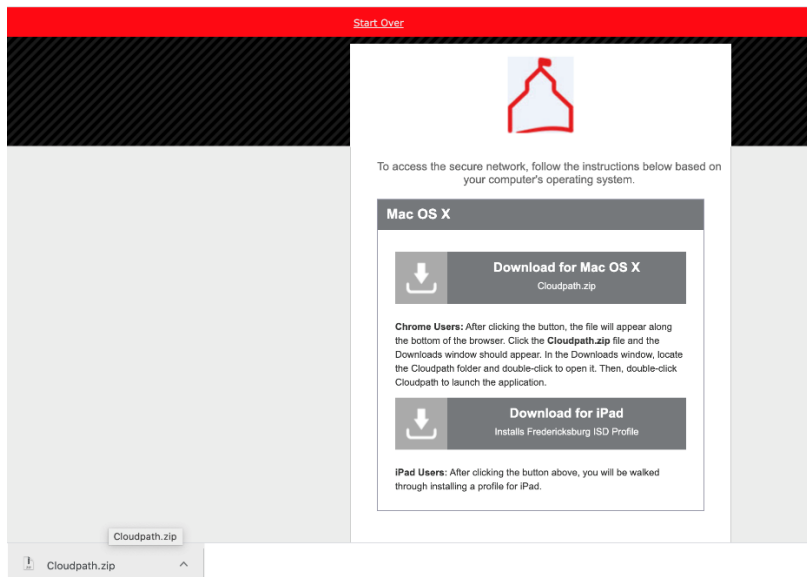


MacOS Onboarding Instructions

4. Select Download for Mac OS X



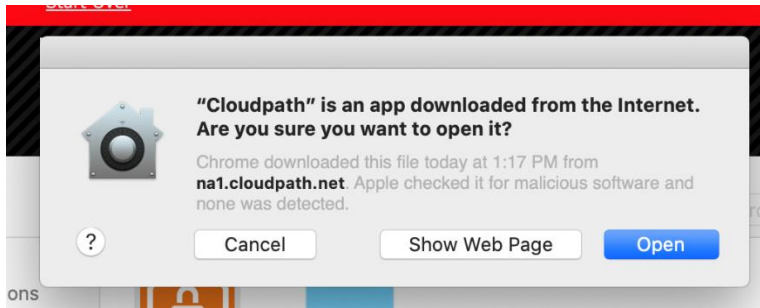
5. The file should download into your Downloads folder.



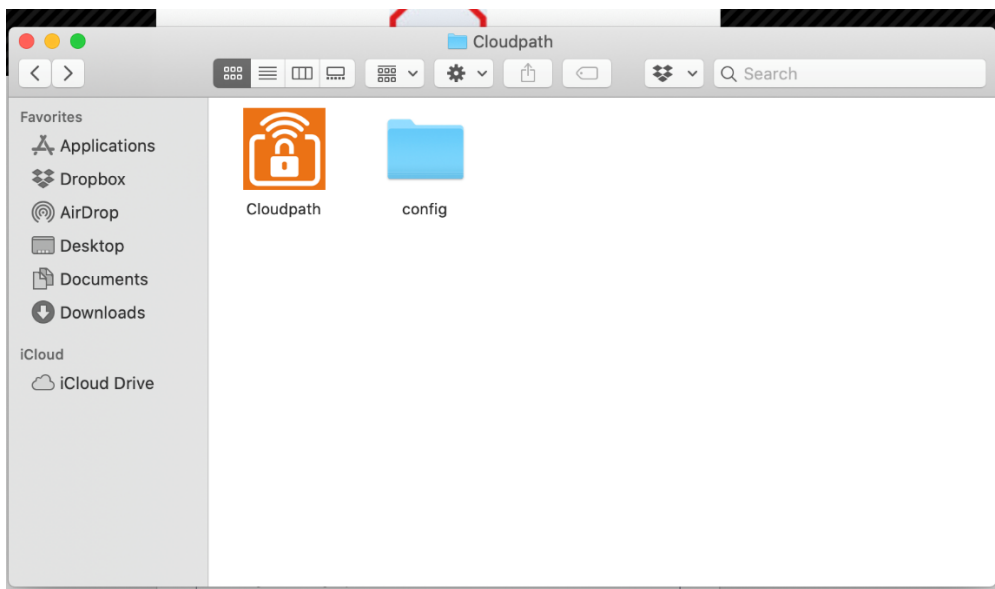
6. Select Cloudpath.zip file.

MacOS Onboarding Instructions

7. Click the Open button.



8. Double click the Cloudpath icon and enter your Mac credentials.



9. The Cloudpath app will configure your Mac for the wireless.

MacOS Onboarding Instructions

10. If the process is successful, you will see this confirmation.

