

GISD Student Handbook Addendum for Weis Middle School

2023–24 School Year



This Addendum is designed to align with the GISD Student Handbook, a board-adopted document intended to promote school safety and an atmosphere for learning.

In case of conflicts between the GISD Student Handbook and this Addendum, the campus will follow the GISD Student Handbook, board policy and the Student Code of Conduct.

Therefore, parents and students should become familiar with the Galveston ISD Student Handbook. To review the GISD Student Handbook, visit the district's website at <https://www.gisd.org/explore-gisd/student-code-of-conduct>.

Contents

GISD Student Handbook Addendum for Weis Middle School	1
VISION	3
MISSION	3
CORE VALUES	3
Student – School – Parent Compact	4
Before School and Arrival	5
Before School	5
Arrival	5
Arrival Map	5
Late Arrivals (Tardy)	6
Dismissal	6
Bus Riders	6
Car Riders	6
Walkers	6
Dismissal Map	7
Leaving Campus Early	8
Absences/Attendance	8
Awards and Honors	8
Celebrations	8
Discipline	8
Dress and Grooming	9
Electronic Devices and Technology Resources	10
Field Trips	10
Food and Nutrition Services	10
Lost and Found	10
Physical Education	11
Social-Emotional Learning	11
Social Media Accounts	11
Student IDs	11
Visitors to the School	11
Volunteers	12
Website	12

VISION

Equitable Opportunities. Extraordinary Experiences.



MISSION

Caring Community Members [One Love + One Community]

We're one community and there's a special bond we have on the island. We're all different, but we work hard to understand, celebrate, and learn from each other. It's cool to be kind, and here, there's nothing but love.

Courageous Learners [Confident in our Abilities + Fearless in the Face of Failure]

We're confident in our abilities. If we're not great at something—yet!—we keep working at it. We're not afraid to take risks, and when we fail, we learn from it. We keep trying, because we're not afraid of getting knocked down. We always get back up. Stronger.

Confident Leaders [We Own Our Actions + We Lead Our Academic Journeys]

We're confident in who we are and we know we're in control of how we show up each day. We manage our emotions and regulate our behaviors. We are the leaders of our academic journeys—we own our learning and advocate for what we need to ensure we're on track for unlimited choices for the future.

CORE VALUES

At Weis Middle School, we do things the **RITE** way:

Respect

We respect one another's right to safety and dignity at school. We will speak to each other with calmness, politeness, and civility.

Integrity

We exercise the moral courage to do the right thing at all times.

Trustworthiness

We are honest in our communication and in our conduct. We follow through on what we say we will do and when we say we will do it.

Effort

We recognize that learning is hard but we can reach our learning goals with the guidance of our teachers and the support of our friends.

Student – School – Parent Compact

Student Compact

The student will assume the following responsibilities:

1. Uphold a 97% attendance rate and non-tardy rate.
2. Maintain at least a 80 average in each course and/or attend required tutoring sessions if a course grade falls below 80.
3. Participate in at least one extracurricular activity or organization.
4. Give your best effort and ask questions when you do not understand.
5. Interact respectfully with all members of the Weis Middle School community (students, teachers, staff, parents, community members, and administration) on campus and in the community.
6. Follow the GISD Code of Conduct and GISD Student Handbook.

Weis Middle School Compact

The school will assume the following responsibilities:

1. Provide a learning environment conducive to educational achievement in the 21st century.
2. Offer unique and diverse educational experiences.
3. Provide opportunities for extra-curricular activities and service-projects.
4. Maintain communication with parents.
5. Evaluate student progress and notify parents at regular intervals.
6. Provide opportunities for parental involvement.

Parent Compact

The parent will assume the following responsibilities:

1. Promote and support the staff, programs, and policies of Weis Middle School and work cooperatively with the staff.
2. Ensure that your student maintains at least a 97% attendance rate and arrives on time to school.
3. Actively oversee your student's academic work on a daily basis and encourage your student to give his/her best effort.
4. Support your child in required after-school or weekend tutoring sessions should he/she not meet academic expectations and provide transportation to and from this additional instructional opportunity, if necessary.
5. Participate in all parent conferences and attend parent meetings.

Before School and Arrival

Before School

Weis Middle School will begin the school day at 7:50 A.M. Students will be allowed to enter the building at 7:15 A.M. Personnel will be available to supervise the students after this time. Therefore, for safety reasons, we appreciate your assistance in refraining from dropping students off before this time. Once inside of the building students will report to the gym morning meeting area or to the cafeteria for breakfast.

Breakfast will be served in the cafeteria from 7:15 – 7:40 A.M.

Students will be escorted to their 1st period class beginning at 7:40 A.M.

Instruction will begin at 7:50 A.M.

Parents, we are encouraging you to have students arrive each morning by 7:40 A.M.

Students are instructed to use specific entrances and exits for arrival and dismissal. This is designated for the safety of all students.

Arrival

All students will enter the building using Doors 2C on the east side (See “Arrival Map”) of the building near the cafeteria. Students will report to designated locations upon entering the building.

Arrival Map



Late Arrivals (Tardy)

Students arriving after 7:50 A.M. will be considered a late arrival (tardy). A parent/guardian must accompany the student into the building to sign the student in. Students are encouraged to arrive by 7:40 A.M. **Five or more late arrival occurrences during a 9-week period will result in an administrative conference. Excessive late arrivals may result in a district truancy referral.**

Showing up on time to school each day benefits students' academic performance and future professional habits. Consistent unexcused tardiness can have both short-term and life-long consequences. Students are learning the advantages of showing up early and the pitfalls of arriving late.

Benefits of On-Time Arrival include:

- Time to Prepare—Students arriving to school with time to spare have the luxury of settling in, preparing their class materials and focusing their minds on the lessons to come.
- Important Information—Arriving to school after classes have begun can cause students to miss more than just the introduction to a new lesson. During morning meetings, teachers often share important information: reminders of upcoming quizzes, class trips, essay due dates and other school-related specifics. Students who show up late miss out on these details and may be unprepared for future class events.
- Positive Lifelong Habits—Showing up on time to school every day can help students develop the habit of being punctual with important commitments. This habit can serve students well through high school, college and into their future careers.

Dismissal

Weis will use Driveline to assist with students dismissal. All families will be provided with a Car Rider Tag to hang from review mirror with their family ID. This family ID number is important for dismissal! Students will remain in their 8th period class until their driveline family ID has been entered. At that time, their name will appear on the dismissal board in their classroom. Students will then make their way to the dismissal area indicated on the dismissal board. Students will remain in their classrooms awaiting dismissal until 3:45. At that time, all remaining students will be escorted to the bus area (for late arriving buses), or the front office to call parents.

Bus Riders

Bus riders will move towards door 1B to load onto their buses. Bus Riders will need to exit the building quickly. Bus drivers will exit the parking lot and will not be able to return if students are not on the bus.

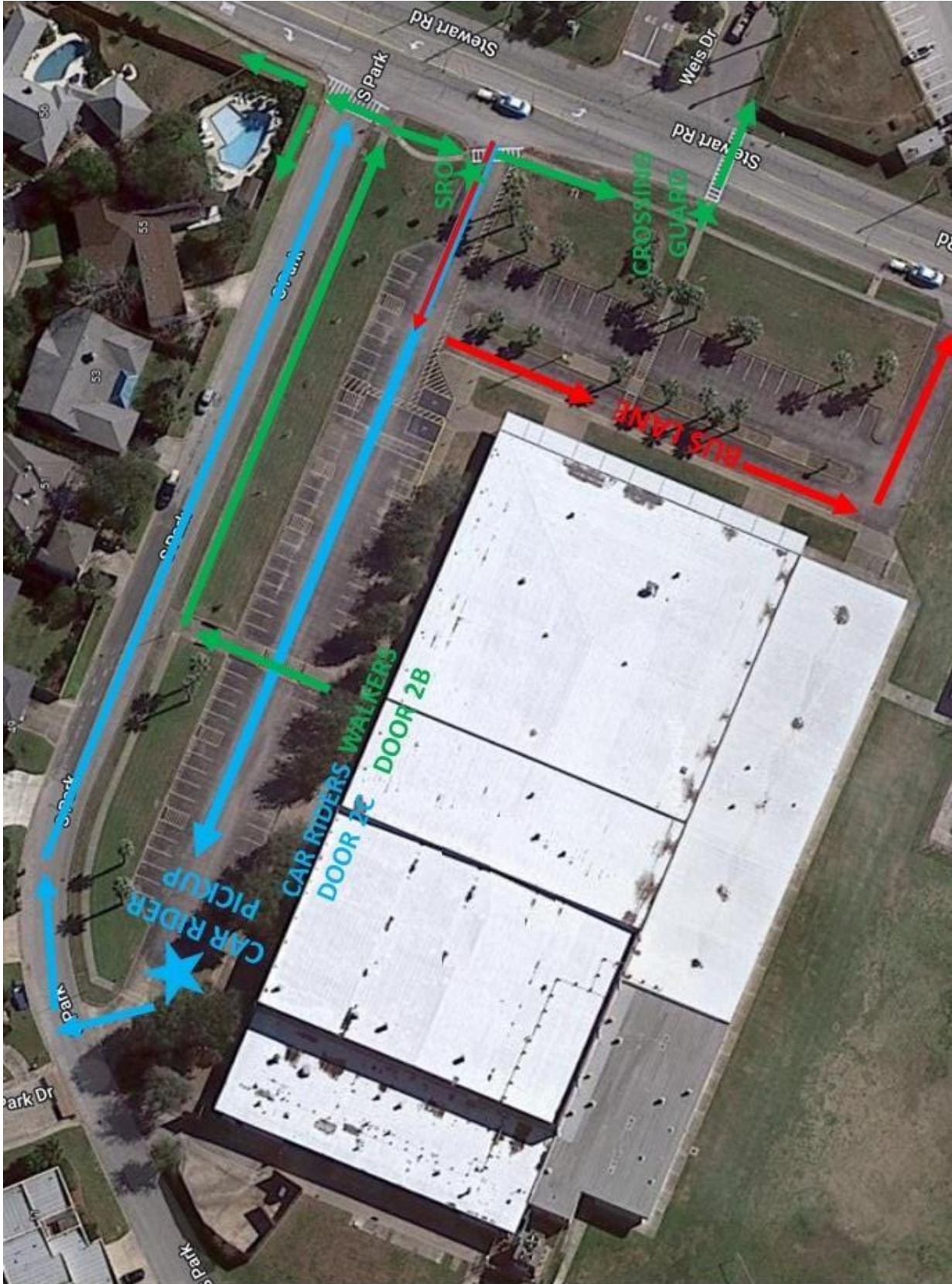
Car Riders

Please make arrangements to pick up your child at 3:30 p.m. Once students have seen their name on the dismissal board, students will exit the building and wait in the designated pick up area at Door 2C until their car is in the car loading zone. Students who are not picked up by 3:45 p.m. will be taken to wait inside the building at the Front Office. Students will not be allowed to wait outside the building unsupervised.

Walkers

Students will exit the building at Door 2B and should immediately proceed along the walker routes utilizing the crosswalks. Students should not remain on campus. Students will not be allowed to wait outside the building unsupervised.

Dismissal Map



Leaving Campus Early

Picking up students prior to regular dismissal time is extremely disruptive to the class and your child's education. **NOTE: No child will be released after 3:00 pm.**

Absences/Attendance

Students are expected to attend school for at least 97% of the school year, this equates to 5 or less absences in a 170-day school year. Good attendance is important for many reasons. Your child receives the maximum benefit of education by being in school every day; numerous studies show a strong link between academic performance and consistent attendance.

Awards and Honors

A-Honor Roll—students must earn an “A” (90-100) in all courses.

A-B Honor Roll—students must earn “A” (90-100) and “B” (80-89) in all courses.

Perfect Attendance Criteria—Students must be present every day for every class period to receive a perfect attendance award each Nine Weeks and at the end of the school year. Missing school for a doctor's appointment will not count against perfect attendance, provided that the student attends school for part of the day AND provides a doctor's note from that healthcare professional.

Celebrations

Most of our students will celebrate birthdays during the school year. While we appreciate the parent's and child's desire to share this event with his/her classmates, we will not interrupt instructional/learning time to do this. Therefore, parties will not be permitted in the classroom or in the cafeteria. **In addition, cakes, cupcakes, cookies, flowers, bouquets, etc. may not be sent to the school for your child. The office staff will not accept delivery of these items.**

Discipline

Weis Middle School has the responsibility of establishing and maintaining a quality educational program in which all students will be successful and reach their full potential. Students also have a responsibility to conduct themselves in a manner, which helps in their academic achievement and maintains a positive school environment. As such, we employ well-researched and proven techniques and procedures to help all students grow socially and emotionally. The campus will utilize Capturing Kids Hearts, CHAMPS, PBIS, and Restorative Discipline to establish consistent and clear expectations to promote a distinguished learning environment.

Consequences

The purpose of disciplinary consequences is to ensure that both individual students and the school community maintain complete focus on learning and growth. Inappropriate student behavior not only impacts the individual, but also exacts a cost on the larger school community. Students must understand that they are a part of a larger whole as Caring Community Members and are accountable to their peers and to the values and expectations of the community. Prompt resolution of problems and student/family solutions to inappropriate behavior is expected.

Dress and Grooming

The campus dress code teaches grooming and hygiene, prevents disruption, minimizes safety hazards, and maintains a positive learning climate.

5th Grade	
Shirt	Red or White polo-style uniform shirt
	No emblems, logos, or decorations on polo shirts. Visible Undershirt- White or Red . Shirts must not hang below the uniform shirt.
Pants	Khaki color (beige/tan), black or blue jeans can be worn any day. Bottoms should not have holes or rips, and they must be logo/decoration free. Bottoms are to be size appropriate and at the child's waist.
Shorts/ skirts	Skirts, jumpers, skorts, and shorts are an option to pants. Shorts must be worn under skirts, jumpers, and dresses. Solid colored tights or solid colored leggings are allowed under jumpers or skirts only. Must be no shorter than 2 inches above the knee.
Shoes	Students are required to wear closed-toed shoes with a back for their own safety while in the building. Tennis shoes are preferred. Students are encouraged to wear non-marking soles to protect the floors.
Sweaters/ Sweatshirts/ Jackets	If worn in the building during the school day they MUST be white, red, black, or grey. They must also be decoration and logo free. Please label with the child's name. Students must still wear their polo-style uniform shirt under the sweatshirts/sweaters with the collar exposed.
	Winter coats may be worn as the students enter and leave the building, not in the classrooms and hallways.
College & Career Wednesdays	Students have the option of wearing any college shirt or a Ball High Spirit shirt on Wednesdays.
Spirit Shirts	Approved Weis Tee Shirts and Sweatshirts can be worn any day during the week. "Click Order Now" https://tor-store.square.site/
House Spirit Fridays	Students may wear their House Spirit Shirts on Fridays. <i>House spirit shirts are available for sale in the front office. - COMING SOON!</i>
Other Themed Days	When students are given a "Free Dress Day", for a special occasion, students will be expected to comply with the district's dress code on these days by not wearing items from the prohibited items list below.

The dress code prohibits:

- head coverings (caps, hats, scarves, decorative headbands, du-rags, beanies or sunglasses)
- sandals, shoes with skates, shower shoes, flip flops, slippers, or any shoes with the heel strap removed or disengaged.
- visible body piercing other than a student's ears,
- tank tops, halters, strapless garments and clothes that expose the midriff, underarm, or cleavage
- pajamas, onesies, gym shorts or other athletic shorts, leggings, tights (unless under shorts or skirt), and yoga pants
- inappropriate logos, emblems or decorations
- pants with holes, tears, rips, or frays

Electronic Devices and Technology Resources

A student must have approval to possess other personal telecommunications devices on campus such as wireless earbuds, smartwatches, Bluetooth devices, and gaming devices.

Students taking pictures or videos of other students or personnel is strictly prohibited without written parent permission and direct Educator supervision of an instructional activity.

If a student uses a telecommunications device without authorization during the school day, the device will be confiscated. The parent may pick up the confiscated telecommunications device from the main office for a fee of \$15.

Students unable to pay the \$15 fee will serve 1 hour afterschool school community service and receive their device back at the end of the next school day unless the next school day is a Friday; if the device is taken on a Friday it will only be returned at the completion of afterschool school community service.

Students who do not relinquish electronic devices upon request may be subject to further disciplinary action. Any disciplinary action will be in accordance with the Student Code of Conduct. The district is not responsible for damaged, lost, or stolen telecommunications devices.

Field Trips

Field trips are intended to enhance or supplement the school's instructional program.

A parent must provide permission for a student to participate in a field trip. Therefore, we request that you sign all field trip forms prior to the day of the field trip. If you would like to serve as a chaperone, you must complete a volunteer form. [See **Volunteers** for more information.]

Students who participate in school-sponsored trips are required to use school-provided transportation to and from the event. However, in accordance with campus procedures, a parent may provide written consent for his or her child to ride with or be released after the event to the parent or another adult designated by the parent.

GISD policy does not allow non-GISD children to ride district buses. In order to provide a safe environment, there will be at least one adult per 15 students on a field trip.

Food and Nutrition Services

Breakfast and lunch are free for all students in GISD. Breakfast will be served in the cafeteria from 7:15 A.M. until 7:40 A.M.

All GISD students will receive breakfast and lunch free of charge.

All GISD schools are closed campuses. Students may not leave campus for lunch or accept deliveries to the campus.

Carbonated drinks and drinks with excessive amounts of caffeine are not permitted in your child's lunch. Students are encouraged to bring a refillable water bottle with school appropriate print.

Only parents are allowed to bring food for students. Students may not share food. **Students may not have food brought to school via a delivery service.** This includes holiday/birthday treats (see "Celebrations.")

Lost and Found

A lost and found collection box is located in the main office. A student who loses an item should check the lost and found box. Students must arrange for an appropriate time to go to the office to claim lost items. It is suggested that students check the "Lost and Found" before school and after school..

Physical Education

Students will not be excused from participating in Physical Education classes unless there is a written excuse from the parent or a doctor. Physical education is a state requirement and participation is mandatory. Our goal is to teach children good health habits and to exercise daily.

Social-Emotional Learning

Social and emotional learning (SEL) is the process through which children and adults acquire and effectively apply the knowledge, attitudes, and skills necessary to understand and manage emotions, set and achieve positive goals, feel and show empathy for others, establish and maintain positive relationships, and make responsible decisions. The following are the five core competencies for social emotional learning:

- Self-Management
- Self-Awareness
- Social Awareness
- Relationship Skills
- Responsible Decision Making

SEL is part of the GISD strategic plan and is embedded throughout our classroom instruction, CHAMPS initiative, and Capturing Kids Hearts. Weis Middle School students will learn about the core principles through their daily SEL lessons.

Social Media Accounts

Please follow our social media accounts to receive important school updates, news, and information about everything happening on campus.



@WeisOwls



@WeisOwlsGISD

Student IDs

Students are required to wear a school ID during school hours. The school will provide one ID to each student. If an ID card is lost, the cost of the replacement ID is \$5.00. Student ID's are required for entry into any activity that takes place after the regular school day (i.e. dances, field trips, lunch, library(etc). IDs must be worn at all times during the school day. Students will be admitted to dances only if they have their ID. If a student forgets their ID, a temporary ID will be issued for the day at the cost of \$1.00.

Visitors to the School

Parents and other adults are welcome to visit the school campus. For the safety of those within the school and to avoid disruption of instructional time, all visitors must first report to the main office and comply with all applicable district policies and procedures.

Parents and visitors shall use the doorbell system for entering the building. All visitors must first report to the school main office to receive a visitor's pass. All visitors should be prepared to show identification. When checking in, you will be asked to present a valid state issued ID for entering into the Raptor system. The system has the ability to provide alerts on people who may jeopardize the safety of the campus. We feel certain this will help us keep our campus safer and ask for your cooperation in presenting your valid state

GISD Student Handbook Addendum for Weis Middle School

issued ID when checking in at the school. The school also maintains data concerning custody issues and restraining orders.

Upon leaving the building, visitors shall report to the main office area to checkout.

Parents/guardians are expected to abide by the school's visitor rules and core values in all their interactions with faculty, staff, administration and other parents and students.

Handicapped parking is provided on the west side of the building. A doorbell system is located at the front of the building at the top of the ramp for handicapped visitors. Office personnel will open the door using the security monitoring system. We appreciate your cooperation in following these procedures. Safety is a priority.

All visitors are expected to demonstrate the highest standards of courtesy and conduct. Disruptive behavior or violations of student privacy will not be permitted.

Volunteers

Experience and research shows that a child's chance of educational success is best when there is a strong partnership between home and school. We encourage all parents/guardians to consider becoming a volunteer at our campus. There are many volunteer opportunities through our Parent Teacher Organization (PTO) and also in the classroom. Parents will have an opportunity to join our PTO at the beginning of the school year. A PTO organizational meeting will be held at the beginning of the school year.

Please visit our website for more information on how to volunteer. <https://weis.gisd.org/parents-and-students/volunteer>

Website

Please visit the Weis webpage for updates and general information concerning your child's education experience. <https://weis.gisd.org/>