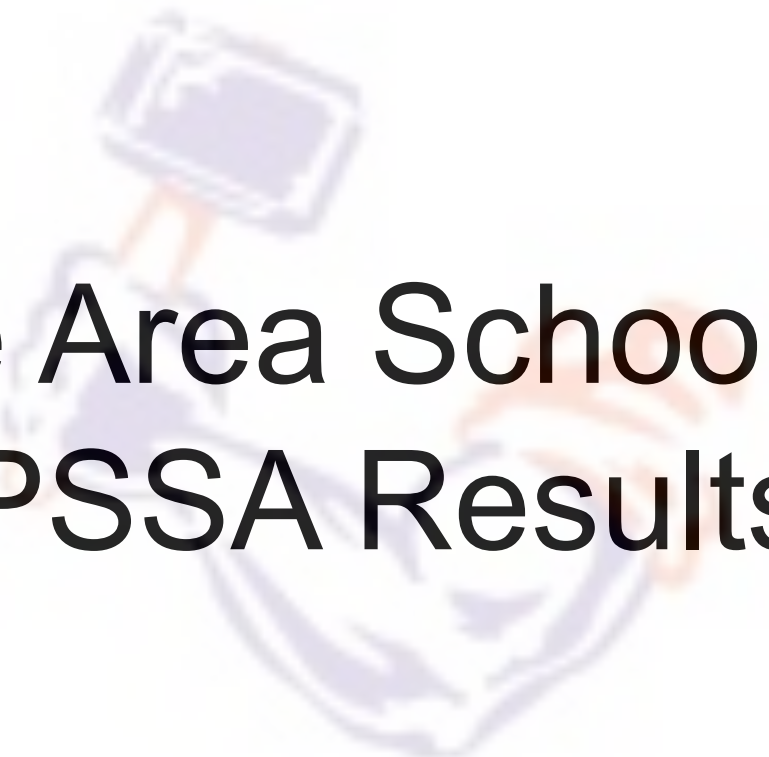


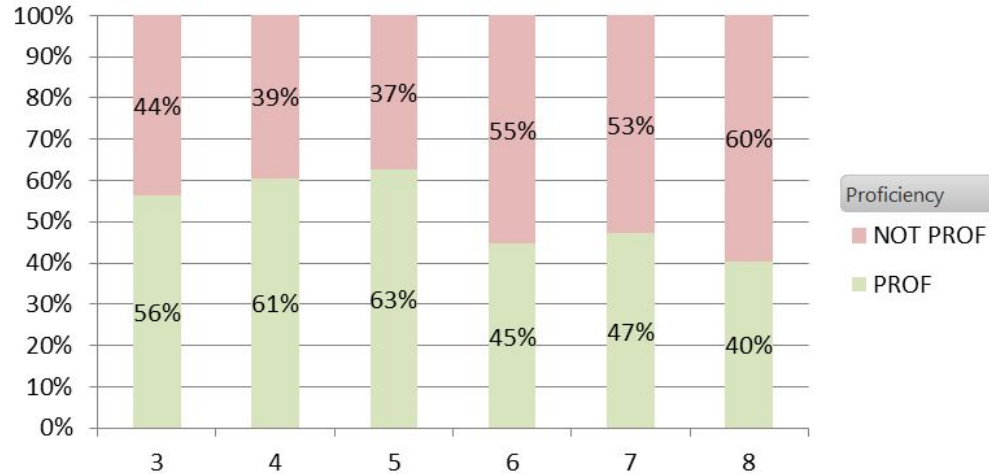
Danville Area School District 2022-2023 Assessment Results



Danville Area School District PSSA Results

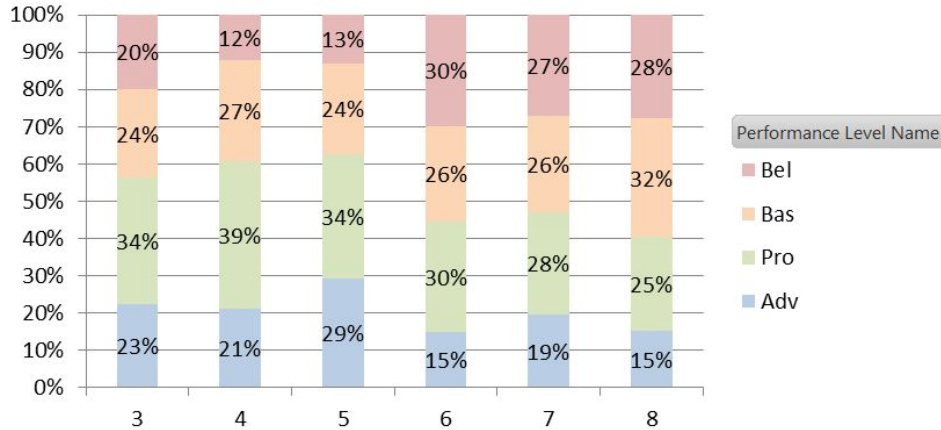
District-Wide Math Proficiency

2023 Math



District-Wide Math Performance Levels

2023 Math-Percent at Each Level



District-Wide Math Reporting Categories: Percentage Advanced/Proficient

Grade	Numbers and Operations	Number System	Ratios and Proportions	Fractions	Expressions and Equations	Functions	Operations and Algebra	Geometry	Measurement and Data	Statistics and Probability
3	58%			60%			63%	49%	51%	
4	61%			60%			55%	69%	57%	
5	67%			56%			58%	54%	59%	
6		54%	48%		51%			61%		51%
7		50%	49%		54%			48%		58%
8		59%			57%	61%		49%		43%

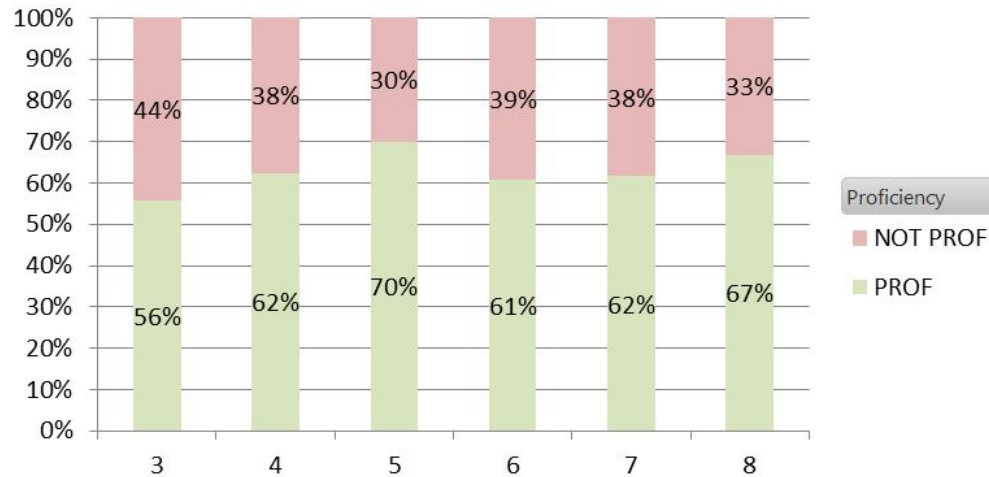
District-Wide Math Longitudinal Cohort Performance

PSSA Math Percentage of ADV and PRO (CSIU Ranking)						
Grade	2018	2019	2020	2021	2022	2023
3	69% (5)	66% (8)	-	62% (4)	58% (7)	56% (8)
4	56% (6)	61% (3)	-	47% (2)	51% (7)	61% (6)
5	70% (2)	73% (1)	-	60% (1)	54% (4)	63% (4)
6	56% (4)	48% (4)	-	36% (4)	38% (8)	45% (9)
7	53% (5)	60% (3)	-	40% (4)	47% (3)	47% (4)
8	41% (7)	48% (5)	-	29% (6)	46% (2)	40% (4)

*CSIU Rankings for 2023 are out of 16 reporting schools; 1 school has not yet participated in Next-Day Data

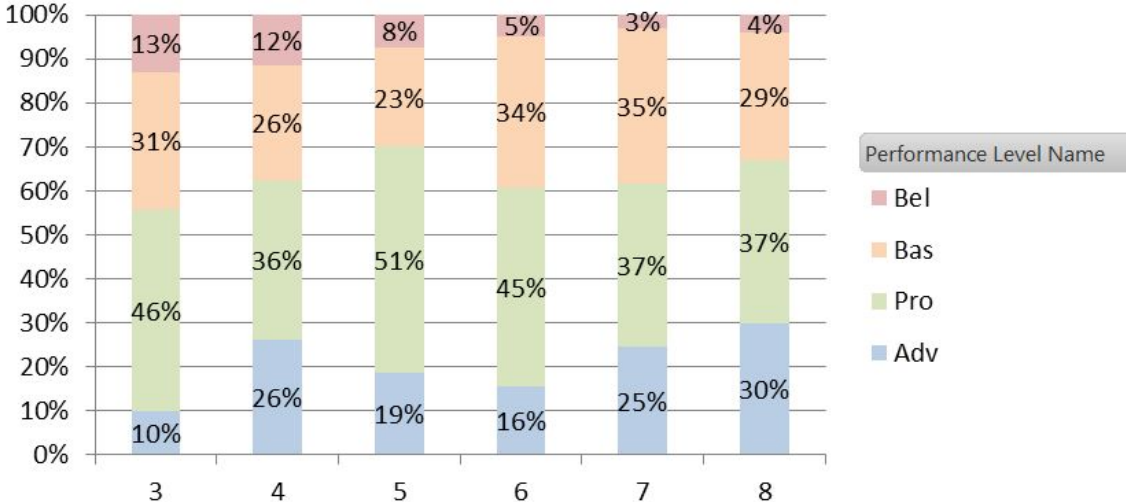
District-Wide ELA Proficiency

2023 English LA



District-Wide ELA Performance Levels

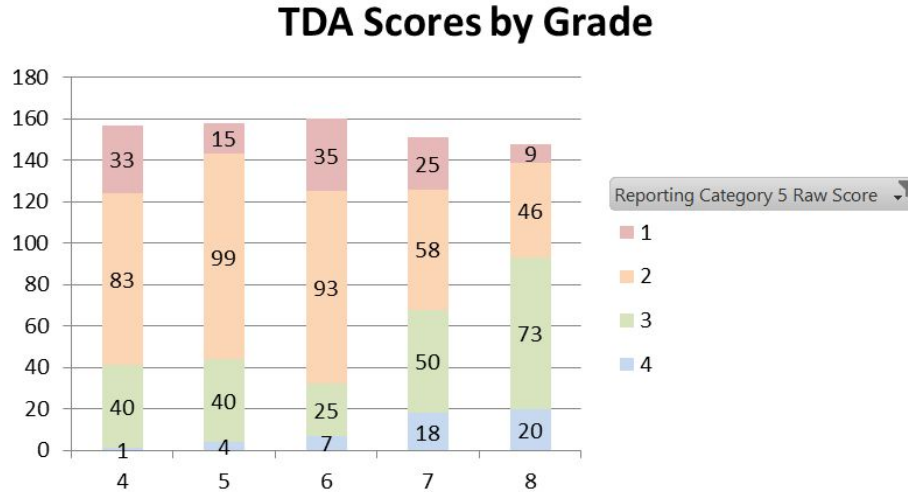
2023 English LA-Percent at Each Level



District-Wide ELA Reporting Categories: Percentage Advanced/Proficient

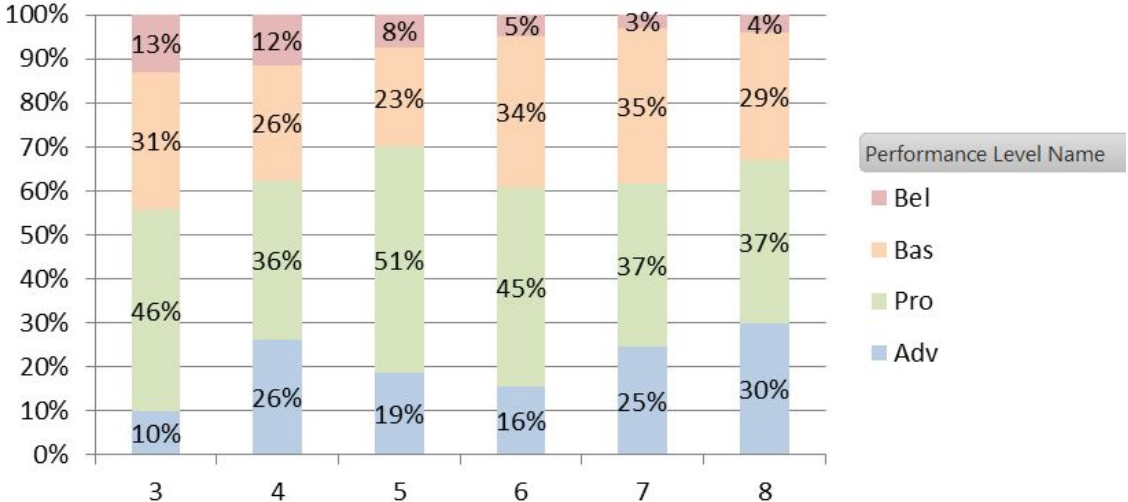
Grade	Key Ideas and Details (reading)	Craft and Structure (reading)	Vocab Acquisition and Use (reading)	Types of Writing	Text-Dependent Analysis
3	48%	51%	53%	64%	
4	61%	60%	64%	52%	51%
5	61%	59%	67%	57%	55%
6	54%	53%	61%	56%	50%
7	54%	60%	65%	50%	60%
8	64%	58%	68%	60%	67%

District-Wide ELA Text Dependent Analysis: Number of Students in Each Reporting Category



District-Wide ELA Performance Levels

2023 English LA-Percent at Each Level



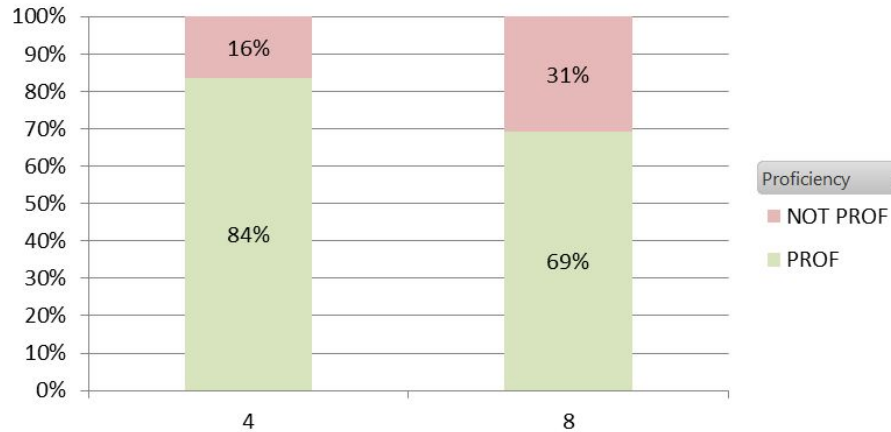
District-Wide ELA Longitudinal Cohort Performance

PSSA ELA Percentage of ADV and PRO (CSIU Ranking)						
Grade	2018	2019	2020	2021	2022	2023
3	75% (4)	74% (5)	-	72% (3)	63% (6)	56% (10)
4	77% (4)	77% (3)	-	58% (9)	63% (5)	62% (5)
5	75% (3)	76% (2)	-	74% (3)	70% (4)	70% (3)
6	70% (8)	71% (6)	-	70% (3)	65% (6)	61% (10)
7	72% (5)	71% (6)	-	74% (2)	70% (2)	62% (5)
8	73% (3)	72% (3)	-	65% (3)	81% (1)	67% (4)

*CSIU Rankings for 2023 are out of 16 reporting schools; 1 school has not yet participated in Next-Day Data

District-Wide Science Proficiency

2023 Science



*Danville 4th Grade Science was 7th in IU; 8th Grade Science was 5th.

District-Wide Science Performance Levels

2023 Science-Percent at Each Level

