

Process Improvement Meeting Agenda – 1/30

- MEVA Mission and Vision.
- Winback the student initiative.
- MCSC Annual Monitoring Recommendation and Targets.
- Winter '23 NWEA Participation.
- Winter '23 NWEA Results.
- NWEA Data/Strategies – Christina O'Grady.
- Professional Development – Don Fournier.
- Guidance Update – Dan Pierce and Heather Tyler.
- Eighth Grade Advisory Update – Holly Chapdelaine.
- Virtual Graduation Ceremonies – Coady Richardson.
- Other and Next Process Improvement Meeting on Monday, February 6th, at 3:00 pm.

MEVA Mission and Vision

School Mission:

Maine Virtual Academy's (MEVA) mission is to develop **each** student's full potential with learner-centered instruction, research-based curriculum and educational tools and resources to provide a high-quality learning experience for grade 7-12 students who are in need of **alternative educational options**. MEVA will develop an **Individualized Learning Plan (ILP)** with specific learning goals to meet each student's needs. MEVA's rigorous curriculum is **aligned** to the eight Maine content areas, the Maine Learning Results, the Common Core State Standards and the Next Generation Science Standards.

School Vision:

MEVA will be a leading 21st century public charter school in Maine and **will improve student learning outcomes through individualized instruction, as evidenced by student academic proficiency, student academic growth, post-secondary readiness**, and the demonstration of 21st century skills such as critical thinking, problem solving, and self-direction. MEVA will empower students to acquire the academic and life skills needed to succeed in post-secondary education and career opportunities. Our graduates will be prepared for college or other postsecondary career training opportunities.

Winback the Student!

“It takes a community to raise up a child”, as the old adage says.
The same is true within education, it takes a team to support each student!

Immediate intervention has been recognized as the most effective method in student retention. Every role within the school plays an important part in this effort.

Without our Students there would be no MEVA!

Withdrawal Mitigation Process

- **Ask why?** – Use phrases like, “*Before* you withdraw, tell me about your reason. There may be something we can do for you.”
- **Listen for keywords;** lack of support, socialization, motivation challenges, tech or navigation challenges and so forth.
- **As you listen, empathize** – Understand their position and their feelings. Many times, families or students have been thinking about this for a while.
- **Advocate for MEVA’s programs** – Share information on our clubs, async options, and student support opportunities. See if they are willing to have a team meeting to talk over work credit options, early college opportunities, and so much more. Some students may qualify for early graduation.
- **Document, document, document** – your mitigation efforts in contact logs within Infinite Campus, then submit an intervention form. Familiarize yourself with the form selections to be aware of the kinds of barriers that lead to withdrawals.
- **Link to the form:** [Rapid Intervention Form](#)

MCSC Recommendation from the SY-2021/2022 Annual Monitoring Report

ACADEMIC ACHIEVEMENT AND GROWTH

- Given the impact of the pandemic on academic growth, Maine Virtual Academy should develop clear and specific strategies for closing learning gaps to ensure students are prepared for rigorous academic work.

New MEVA Custom Target - NWEA

- **Student Median Conditional Growth Percentile** on the MAP Student Growth Summary Report.
- Separate goals for each grade level (7, 8, 9, 10, & 11), a total of fifteen indicators/goals: The student median conditional growth percentile is the fiftieth (50th) or higher, as of the spring NWEA math, reading, and language usage, for each eligible grade level.

MCSC Growth Target – Middle School

- At least 60% of students in grades 7 & 8 will achieve their NWEA projected growth from fall to spring in math, reading, and language usage.
- Partially meeting is reaching 50 – 59%.
- Not meeting is below 50%.

Winter '23 NWEA – MET 95% Goal

Winter '23 NWEA Participation.

	Math	Reading	Language
7th Grade (N = 34)	100%	100%	100%
8th Grade (N = 58)	91.4% (53)	89.7% (52)	89.7% (52)
9th Grade (N = 64)	98.4% (63)	98.4% (63)	98.4% (63)
10th Grade (N = 95)	96.8% (92)	96.8% (92)	96.8% (92)
11th Grade (N = 113)	94.7% (107)	94.7% (107)	94.7% (107)
Schoolwide (N = 364)	95.9% (349)	95.6% (348)	95.6% (348)

Winter '23 NWEA Results - Overall

Winter NWEA Growth Results as of January 29th, 2023

Overall Growth by Grade Level Student Median Conditional Growth Percentile (MCGP)

Grade	Math MCGP	Reading MCGP	Language MCGP
7	54 th	33 rd	68 th
8	63 rd	41 st	42 nd
9	52 nd	54 th	56 th
10	36 th	61 st	72 nd
11	55 th	57 th	57 th

Exceeds = 66th %ile or higher.

Meets = 50th % to 65th %ile.

Approaches = 35th to 49th %ile.

Does Not Meet = Lower than 35th %ile.

Winter '23 NWEA Results – Middle School

Winter NWEA Growth Results as of January 29th, 2023

Middle School Percentage of Students Meeting Growth Projection

Grade	Math %	Reading %	Language %
7	63	40	63
8	60	48	46
MS	62	45	53

Exceeds = 70% or higher.

Meets = 60% to 69.9%.

Approaches = 50% to 59.9%.

Does Not Meet = Lower than 50%.

NWEA Data

Now What?





01

Can You Access Reports?

The data in the tracker will be cleared for FERPA reasons.

02

NWEA Reports

Quadrant Report
Student Growth Summary
Grade Level Reports
Strategies

03

Looking at individual student's needs.



Can you Access the NWEA Reports?

I want to make sure that everyone knows how to access the reports on the NWEA site.



NWEA Reports



Quadrant Report

Breaks down students by content level and where they fall on growth and achievement and compares to national norms.

Student Growth Summary Report

Compares student data to norms of similar schools.

Grade Level Report

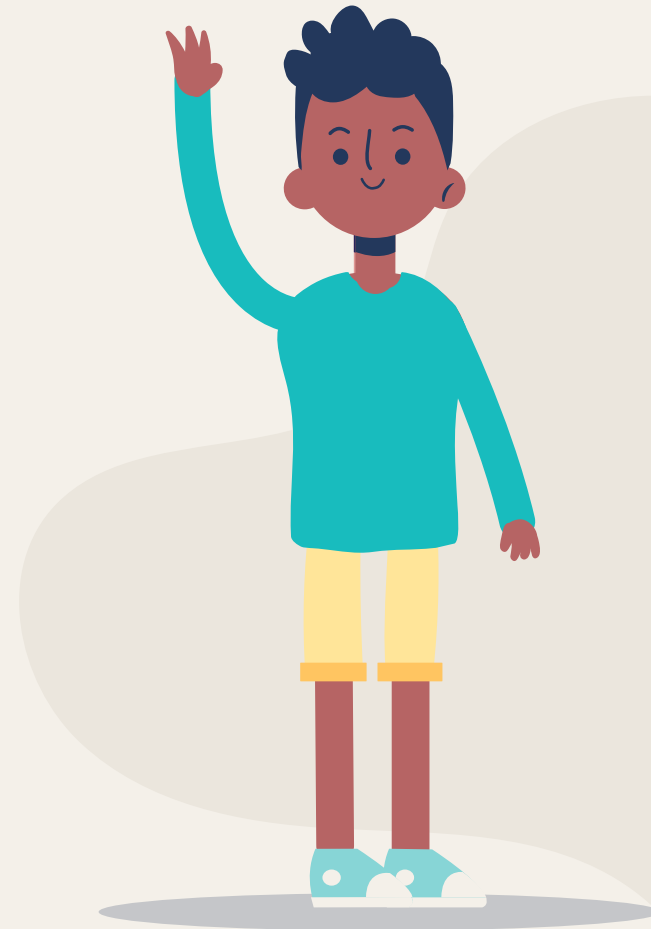
Helps to determine grade level priorities.

Strategies



Strategies

1. Compare map to areas of focus.
2. Team up to help our students grow.
3. Focus on individual student's needs.



Professional Development Needs Survey

- We want to hear about your preferred focus areas.
- What would I like to see in the near future for professional development at MEVA?
- Results and Plan.

PD SURVEY RESULTS 2023



Percent Chosen	Topic	Link to PD video
60%	BS Gradebook	https://meva.brightspace.com/d2l/le/lessons/6681/folders/2301
	BS Calendar	https://meva.brightspace.com/d2l/le/lessons/6681/lessons/2354
	BS Groups	https://meva.brightspace.com/d2l/le/lessons/6681/lessons/2346
	BS Question Library	https://meva.brightspace.com/d2l/le/lessons/6681/folders/2269
50%	Pear Deck	https://support.goguardian.com/s/pear-deck-topics
40%	BS Assignments	https://meva.brightspace.com/d2l/le/lessons/6681/folders/2263
	BS Quizzes	https://meva.brightspace.com/d2l/le/lessons/6681/folders/2284
30%	Google for Education	https://edu.google.com/intl/ALL_us/
	Zoom App	https://support.zoom.us/hc/en-us/categories/200101697
	BS Bongo	https://meva.brightspace.com/d2l/le/lessons/6681/units/69231
20%	Creator +	https://meva.brightspace.com/d2l/le/lessons/6681/units/83858
	Data Collection	https://meva.brightspace.com/d2l/le/lessons/6681/units/82675
	Subject Area Specific	Each Subject area plans days for applicable workshops

Teacher Navigator Help Desk time is available everyday except Monday from 3:00 to 4:00 PM or by appointment.

<https://mainevirtual-org.zoom.us/j/3686555523?pwd=dnNIWHFxRTZBMjZVeW9VNDh2V0xvZz09>

Guidance Update

- Heather Tyler and Dan Pierce will provide a guidance update.

Eighth Grade Advisory Update

- We are prioritizing engaging and retaining eighth grade students due to (past) patterns of high turnover, and significant academic needs.
- Prior year data suggest that we retain fewer 8th grade students during the academic year and getting them to enter high school at MEVA is a hard sell.
- Eighth graders also have significant academic needs, as evidenced by their special education identification rate.
- Dr. Chapdelaine will provide an update on ongoing advisory activities that are aimed to mitigate these issues.
- What is new in the 8th grade?



8th Grade Advisory



7 Habits

- Highlighting the importance of Reading
- Working on 7 Habits of Highly Effective Teens
- Processing about choices and decision making
- Using character based education with a focus on academic/personal growth

1. Be Proactive. Be a leader. ...
2. Begin with the End in mind. Set a goal.
3. Put first things first. Prioritize. ...
4. Think win-win. Compromise. ...
5. Seek first to understand; then to be understood. Understand people. ...
6. Synergize. Celebrate differences. ...
7. Sharpen the saw. Renew yourself regularly.

Virtual Graduation Ceremonies Planning

- We are planning a virtual high school graduation ceremony on June 2nd, 2023, at 2:00 pm.
- Our middle school (virtual) step up day is tentatively planned for June 9th, 2023, at 11:00 am.
- Student and faculty planning has started.
- We are maintaining communication lists.
- We are hosting a graduation planning club for high school students.

Other

- We will factor the mid-year data into our Comprehensive Needs Assessment.
- Open Enrollment for SY-2023/2024 begins on Monday, January 27th.
- Re-registration for SY-2023/2024 begins on Monday, February 27th.
- Any other topics?
- Next Meeting is on Monday, February 6th, at 3:00 pm.

Individual Learning Plans (ILPs)

Specific Learning Goal to Meet Each Student's Needs: The student will develop career readiness skills through experiential opportunities.

➤ What do you do or want to do with your time?

Career Readiness Experiences/Opportunities: Employment, internships, virtual job shadowing, volunteering activities, clubs and organizations, portfolio projects, and Career Planning, Early College and AP4ALL courses.

➤ What can MEVA offer you to match your interests?

Strategy: MEVA Access/Engagement Initiatives

1. Encourage students to frequently check their school g-mails.
 2. Perform technology checks in multiple venues.
 3. Call team meetings with parents and teachers for struggling students at the earliest possible juncture.
 4. Maintain parent involvement by regularly following up.
- We have the BEST virtual teachers in the state at MEVA. Our task is to get students to access our instruction and engage in learning.
 - This is our basic strategy to encourage/ensure students' academic growth and college readiness, as measured by the NWEA and Accuplacer.

Panorama Survey Action Plan & ILPs

1. *Target School Fit: How well do the activities offered at your child's school match his/her interests?*

➤ **Action Plan (Families): Individual Learning Plans (ILPs).**

2. *Target Rigorous Expectations: How often do your teachers make you explain your answers?*

➤ **Action Plan (Students): Instructional Maps and Course Development.**

3. *Target Feedback and Coaching: How often do you receive feedback on your teaching? How much feedback do you receive on your teaching? How much do you learn from the teacher evaluation processes at your school?*

➤ **Action Plan (Teachers): Increase teacher/peer observations and feedback. Review teacher evaluation processes; seek faculty input.**

4. *Target Feedback and Coaching: How much feedback do you receive on your work? How much do you learn from the evaluation processes at your school?*

➤ **Action Plan (Staff): Increase staff observations and feedback. Review evaluation processes; seek faculty input.**