

Process Improvement Meeting Agenda – 2/6

- MEVA Mission and Vision.
- Winback the student initiative.
- NWEA Data Analysis Strategies.
- NWEA Data/Strategies – Christina O’Grady.
- Professional Development – Don Fournier.
- Guidance Update – Dan Pierce and Heather Tyler.
- Eighth Grade Advisory Update – Holly Chapdelaine.
- Virtual Graduation Ceremonies – Coady Richardson.
- Other and Next Process Improvement Meeting on Monday, February 13th, at 3:00 pm.

MEVA Mission and Vision

School Mission:

Maine Virtual Academy's (MEVA) mission is to develop **each** student's full potential with learner-centered instruction, research-based curriculum and educational tools and resources to provide a high-quality learning experience for grade 7-12 students who are in need of **alternative educational options**. MEVA will develop an **Individualized Learning Plan (ILP)** with specific learning goals to meet each student's needs. MEVA's rigorous curriculum is **aligned** to the eight Maine content areas, the Maine Learning Results, the Common Core State Standards and the Next Generation Science Standards.

School Vision:

MEVA will be a leading 21st century public charter school in Maine and **will improve student learning outcomes through individualized instruction, as evidenced by student academic proficiency, student academic growth, post-secondary readiness**, and the demonstration of 21st century skills such as critical thinking, problem solving, and self-direction. MEVA will empower students to acquire the academic and life skills needed to succeed in post-secondary education and career opportunities. Our graduates will be prepared for college or other postsecondary career training opportunities.

MEVA: High Performing Public Charter School

- Academically.
- Operationally.
- Financially.

Winback the Student!

“It takes a community to raise up a child”, as the old adage says.
The same is true within education, it takes a team to support each student!

Immediate intervention has been recognized as the most effective method in student retention. Every role within the school plays an important part in this effort.

Without our Students there would be no MEVA!

Withdrawal Mitigation Process

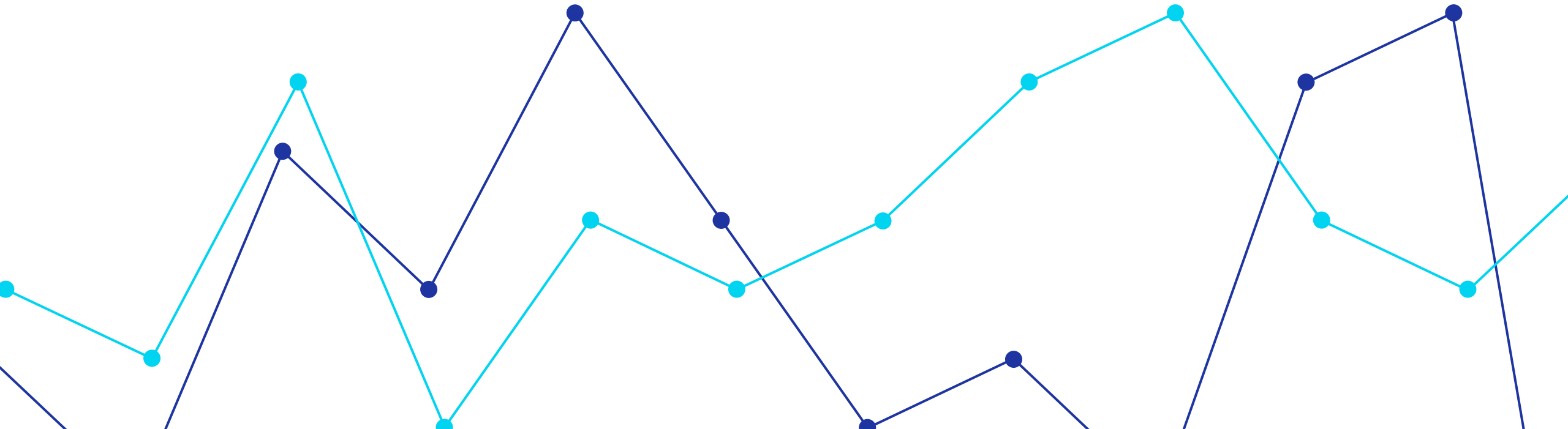
- Ask why? – Use phrases like, “*Before* you withdraw, tell me about your reason. There may be something we can do for you.”
- Listen for keywords; lack of support, socialization, motivation challenges, tech or navigation challenges and so forth.
- As you listen, empathize – Understand their position and their feelings. Many times, families or students have been thinking about this for a while.
- Advocate for MEVA’s programs – Share information on our clubs, async options, and student support opportunities. See if they are willing to have a team meeting to talk over work credit options, early college opportunities, and so much more. Some students may qualify for early graduation.
- Document, document, document – your mitigation efforts in contact logs within Infinite Campus, then submit an intervention form. Familiarize yourself with the form selections to be aware of the kinds of barriers that lead to withdrawals.
- Link to the form: [Rapid Intervention Form](#)

NWEA Data Analysis Strategies

- Median student Conditional Growth Percentile.
- Percentage of students who met their projected RIT growth.
- Subgroup performance: Special Education, Section 504, Economically Disadvantaged, Gender, and Ethnicity.
- Longitudinal data of cohorts.
- Individual course data.
- Data analysis typically considers subjects (i.e., math, reading, and language usage), grade levels, and longevity at MEVA.
- Efforts inform schoolwide collaboration and planning.

Longitudinal & Subgroup NWEA Data

2018-2023



RIT Growth

- We tested 350 students in grades 7-11 during the Winter NWEA testing window.
- 303 students had a fall & winter score which allows growth to be measured.
- Our overall testing percentage was 96%, adjusting for students who were in the process of withdrawing during the Winter NWEA testing window

NWEA Cohort Comparisons

Meeting Projected RIT - MATH

	Winter 2020		Winter 2021		Winter 2022		Winter 2023	
	number	percentage	number	percentage	number	percentage	number	percentage
Averages	24	53%	36	58%	31	52%	33	55%
Grade 7	15	54%	26	58%	14	48%	19	63%
Grade 8	18	45%	33	55%	21	53%	29	60%
Grade 9	33	61%	43	64%	38	61%	28	53%
Grade 10	27	47%	35	49%	44	53%	34	44%
Grade 11	29	60%	41	66%	39	46%	54	57%

Meeting Projected RIT - READING

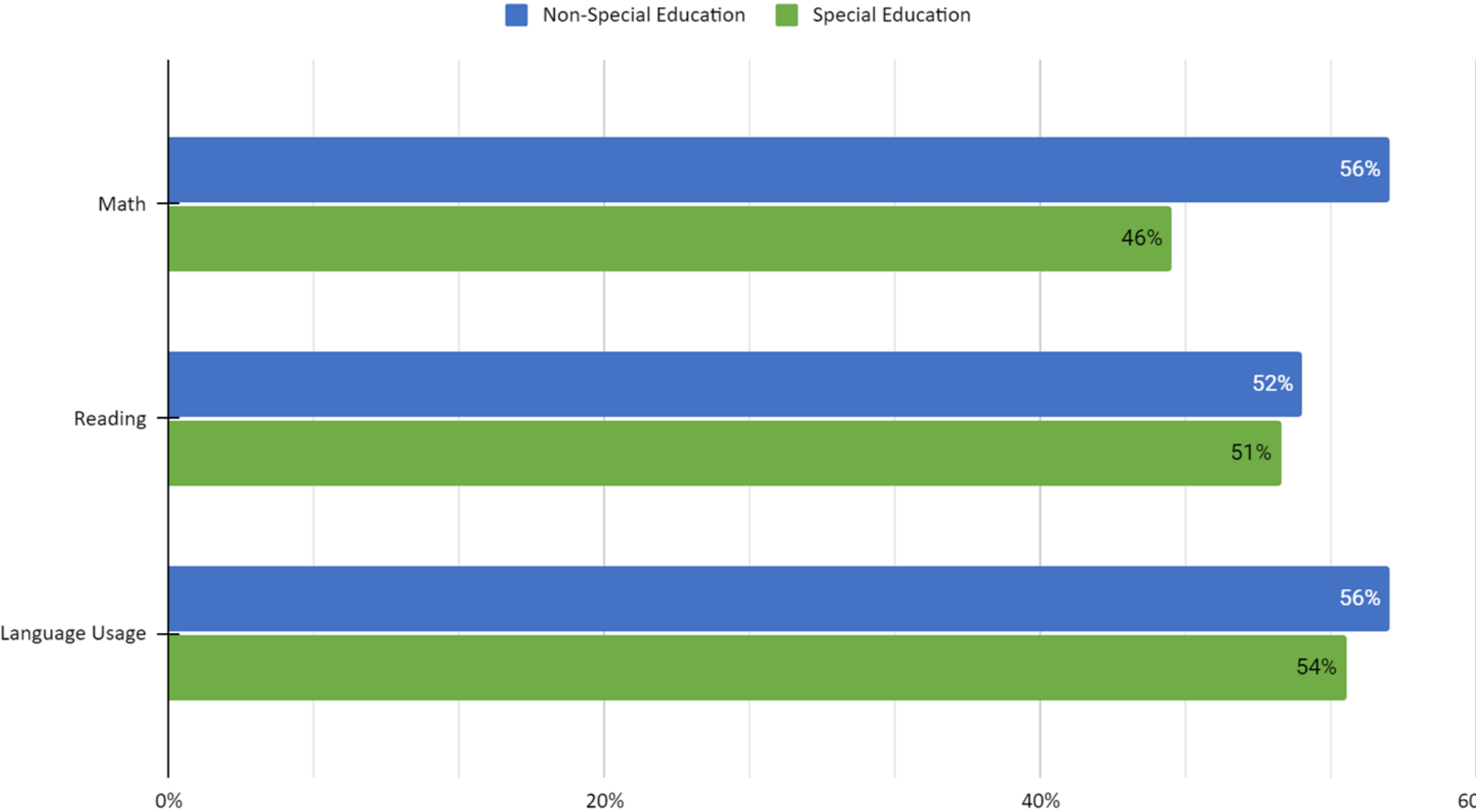
	Winter 2020		Winter 2021		Winter 2022		Winter 2023	
	number	percentage	number	percentage	number	percentage	number	percentage
Averages	18	41%	27	44%	23	41%	32	49%
Grade 7	11	39%	17	39%	16	55%	12	33%
Grade 8	13	34%	24	39%	15	38%	23	41%
Grade 9	24	46%	27	42%	22	35%	29	54%
Grade 10	21	36%	39	55%	33	39%	43	61%
Grade 11	23	48%	28	46%	31	36%	51	57%

NWEA Cohort Comparisons

Meeting Projected RIT - Language Usage								
	Winter 2020		Winter 2021		Winter 2022		Winter 2023	
	number	percentage	number	percentage	number	percentage	number	percentage
Averages	16	37%	27	46%	34	57%	34	56%
Grade 7	9	33%	18	42%	16	55%	19	63%
Grade 8	13	35%	32	52%	25	64%	22	46%
Grade 9	21	42%	35	55%	33	52%	31	58%
Grade 10	18	33%	26	40%	47	56%	45	58%
Grade 11	20	43%	25	40%	49	58%	52	55%

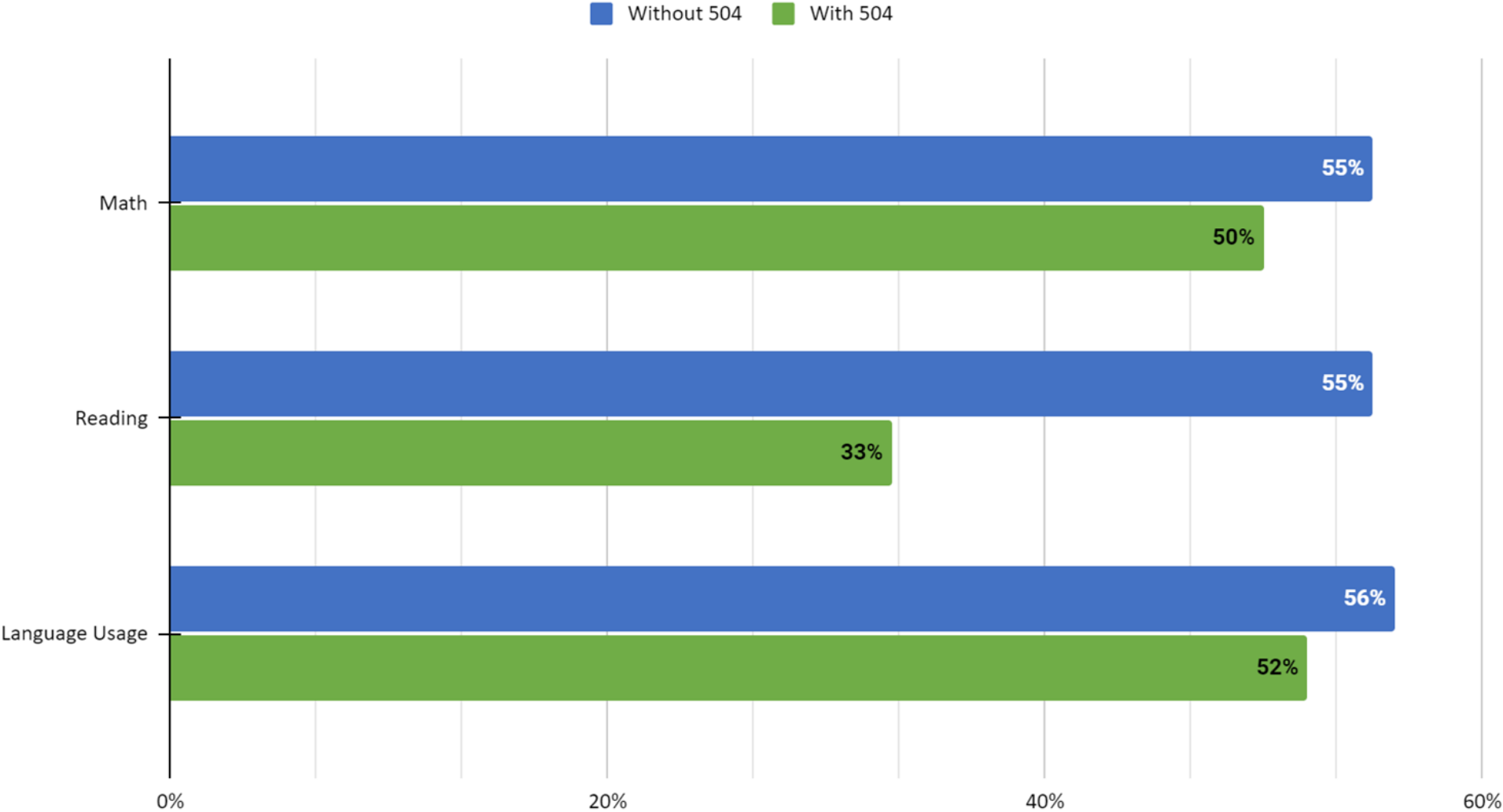
Subgroup Comparisons - Special Education

Met RIT Growth Comparing General Education and Special Education



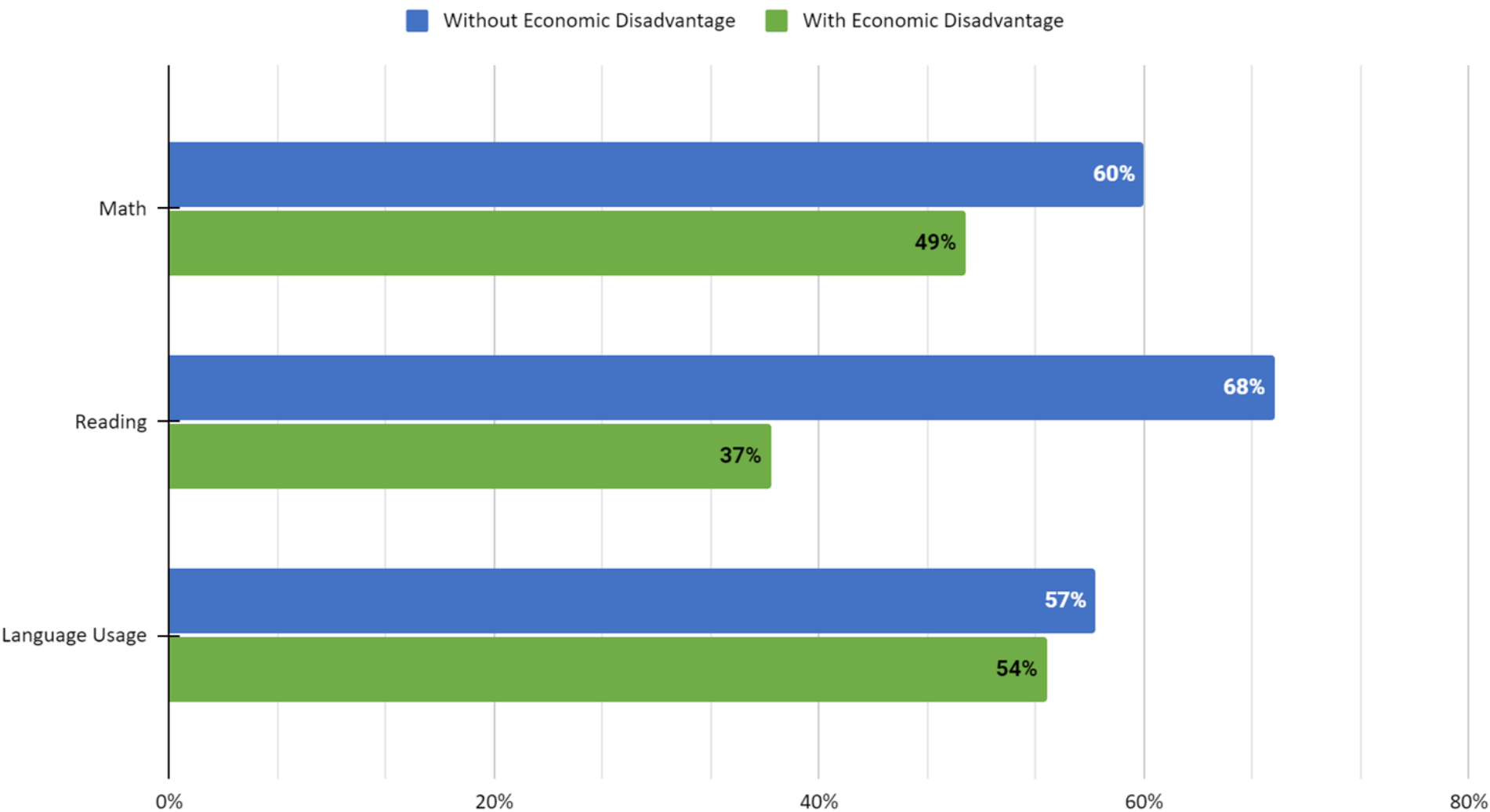
Subgroup Comparisons - 504 Plans

Met RIT Growth Comparing Students Without and With a 504 Plan



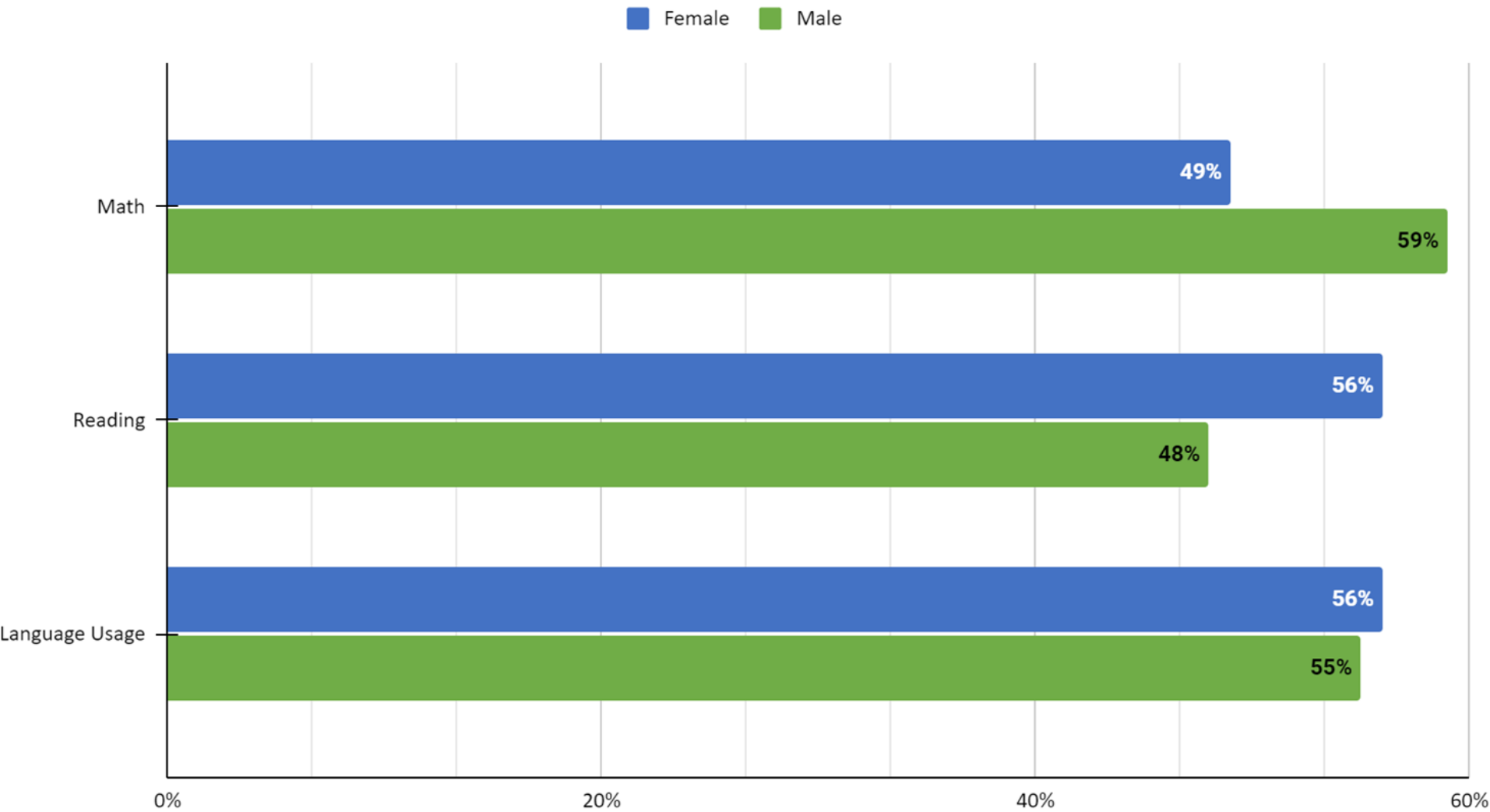
Subgroup Comparisons - Economically Disadvantaged

Met RIT Growth Comparing Students Without and With an Economic Disadvantage



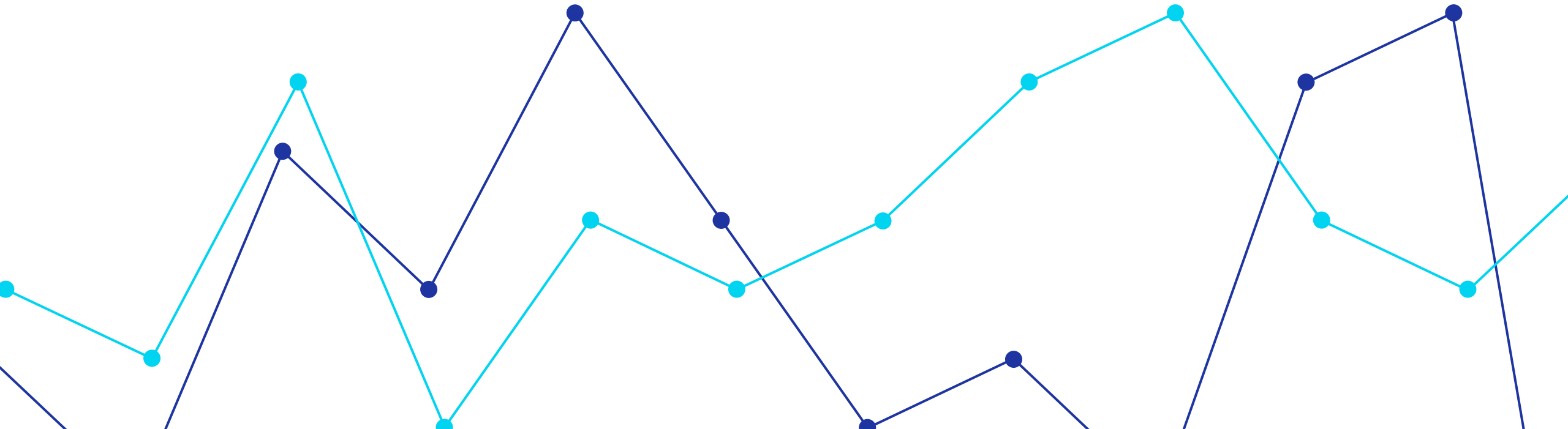
Subgroup Comparisons - By Gender

Met RIT Growth Comparing Female and Male Students



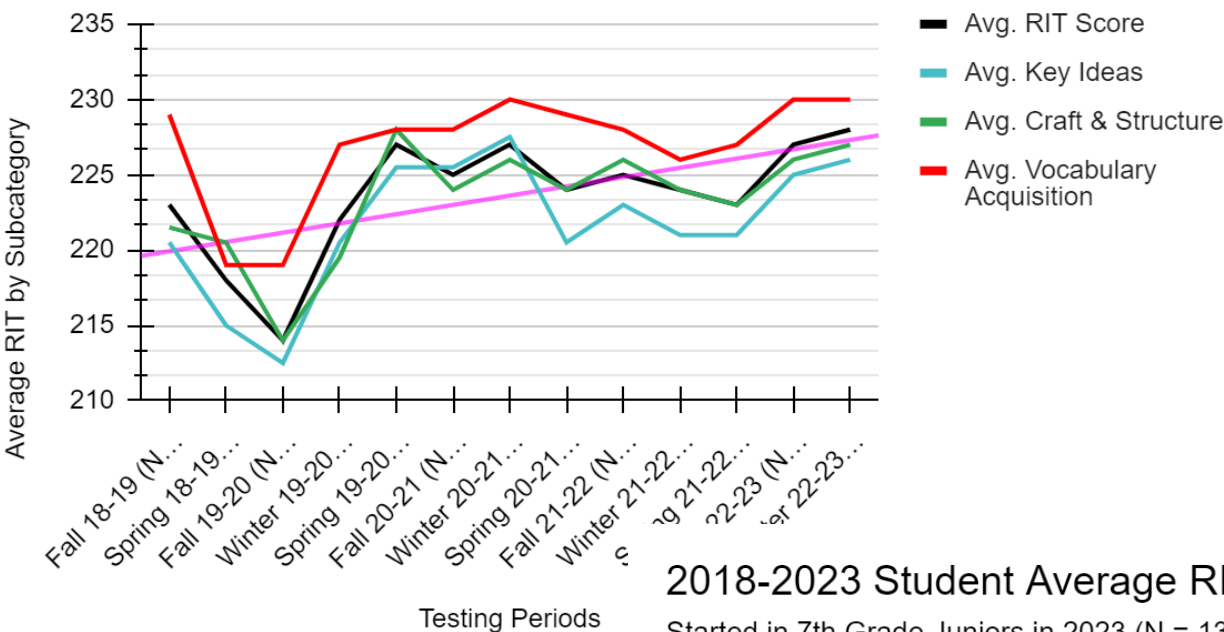
5-Year Students

Started in 2018 as 7th Graders, Now Juniors (N = 13)



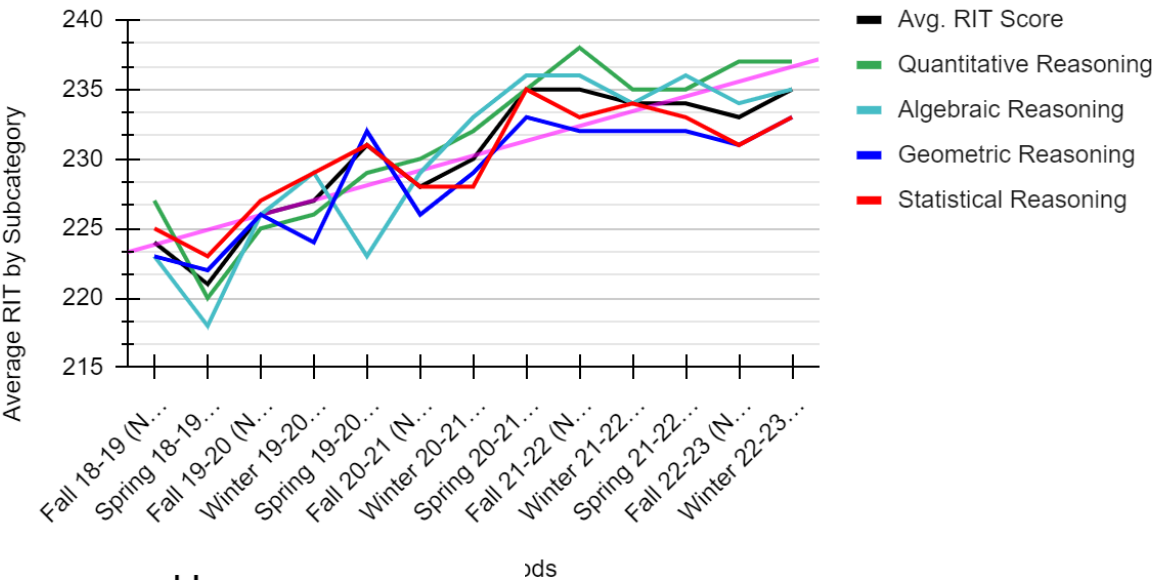
2018-2023 Student Average RIT in Reading

Started in 7th Grade Juniors in 2023 (N = 13)



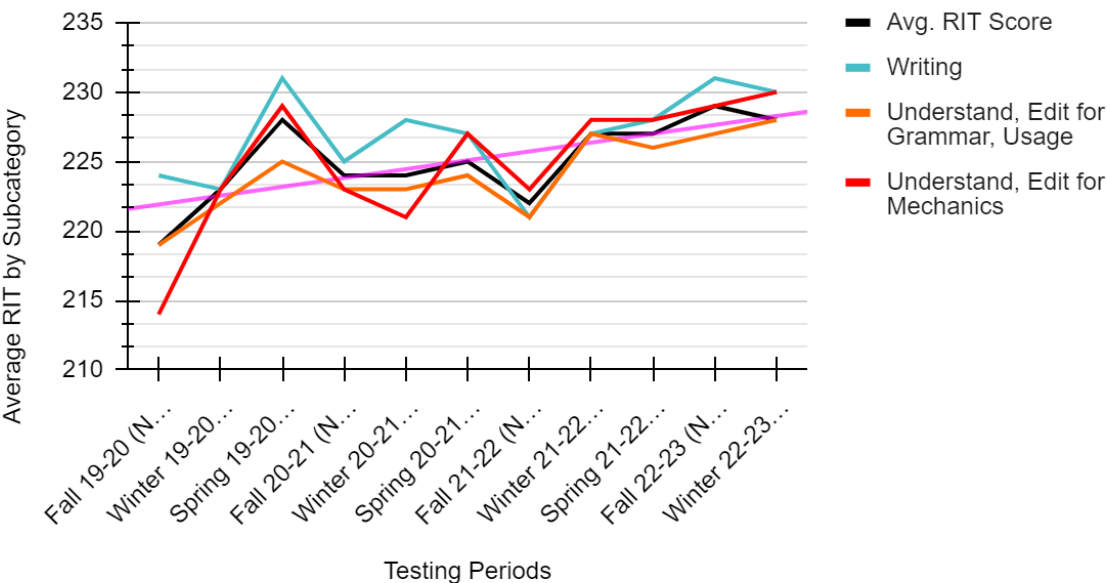
2018-2023 Student Average RIT in Math

Started in 7th Grade Juniors in 2023 (N = 13)



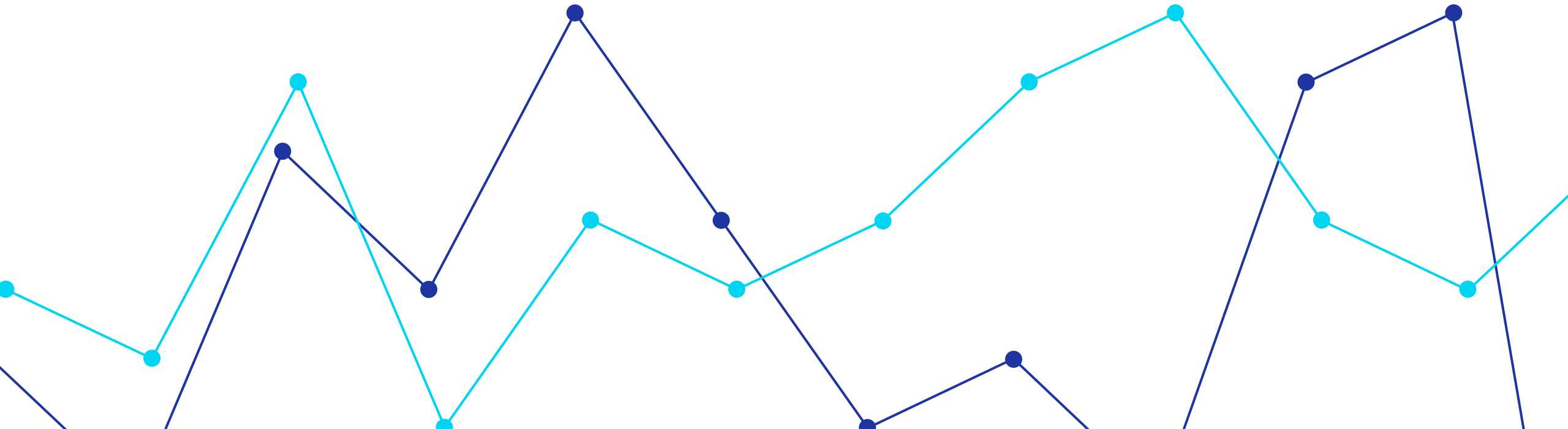
2018-2023 Student Average RIT in Language Usage

Started in 7th Grade Juniors in 2023 (N = 13)



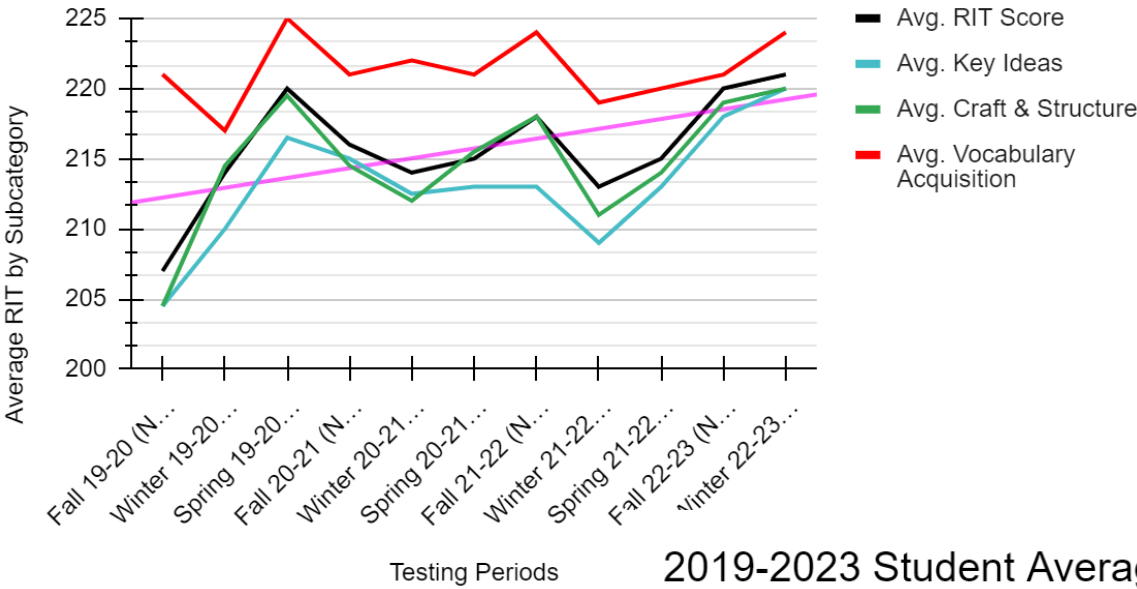
4-Year Students

Started in 2019 as 8th Graders, Now Juniors (N = 7)



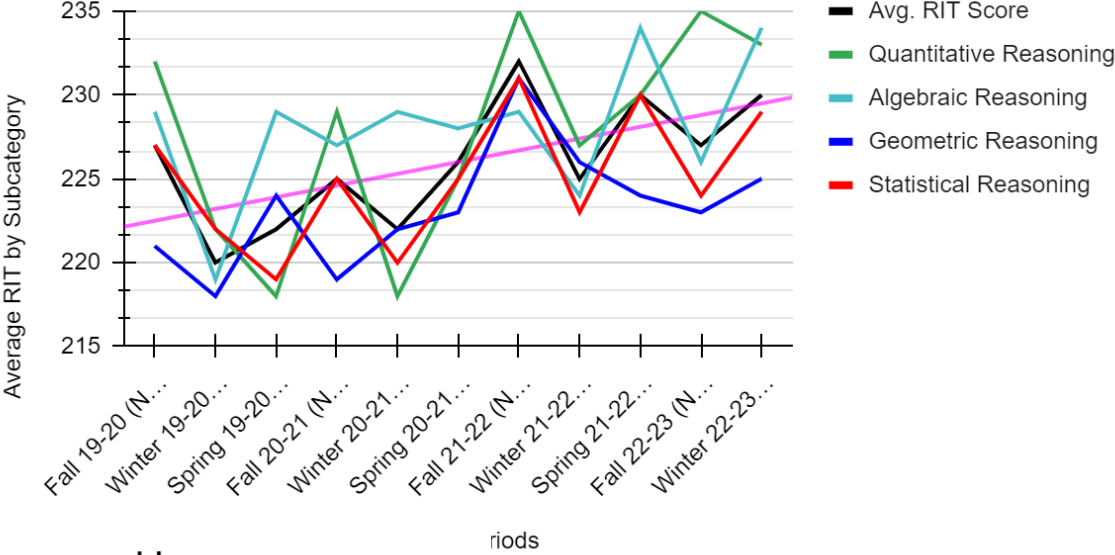
2019-2023 Student Average RIT in Reading

Started in 8th Grade Juniors in 2023 (N =7)



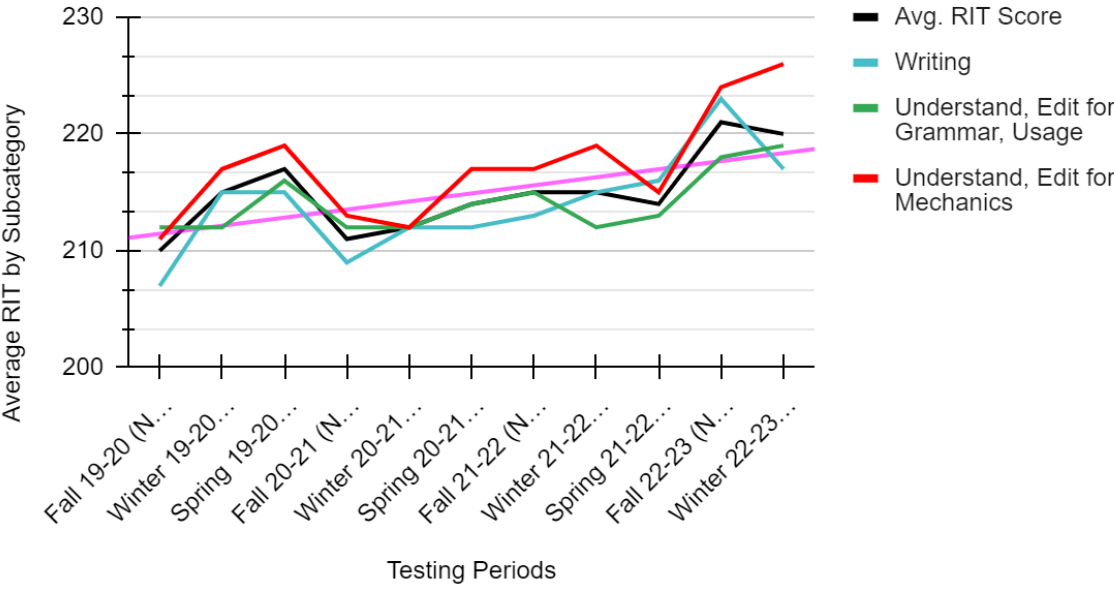
2019-2023 Student Average RIT in Math

Started in 8th Grade Juniors in 2023 (N =7)



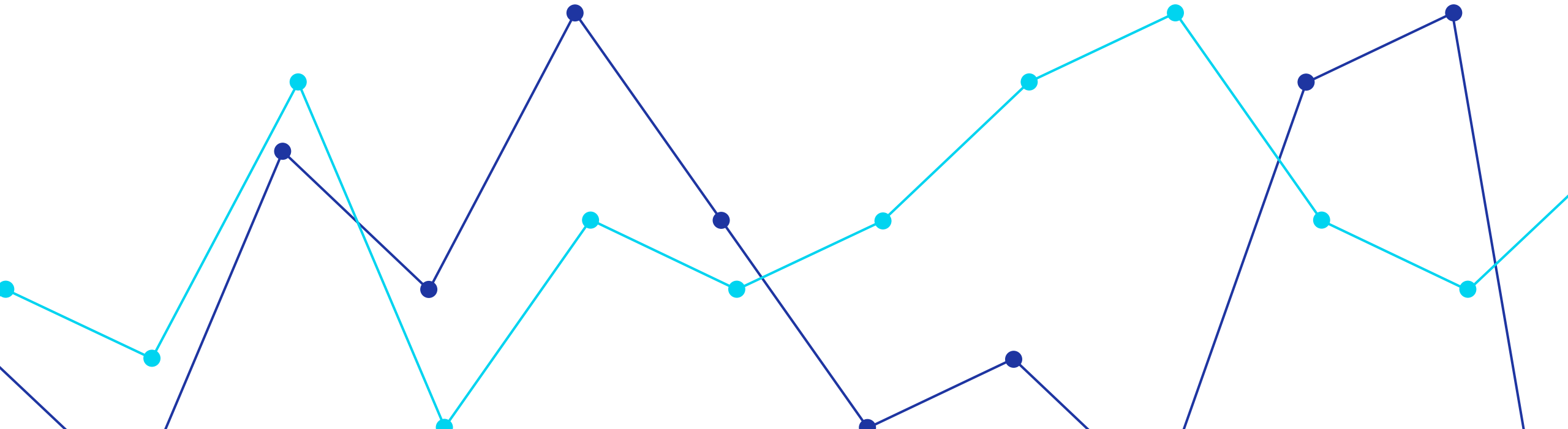
2019-2023 Student Average RIT in Language Usage

Started in 8th Grade Juniors in 2023 (N =7)



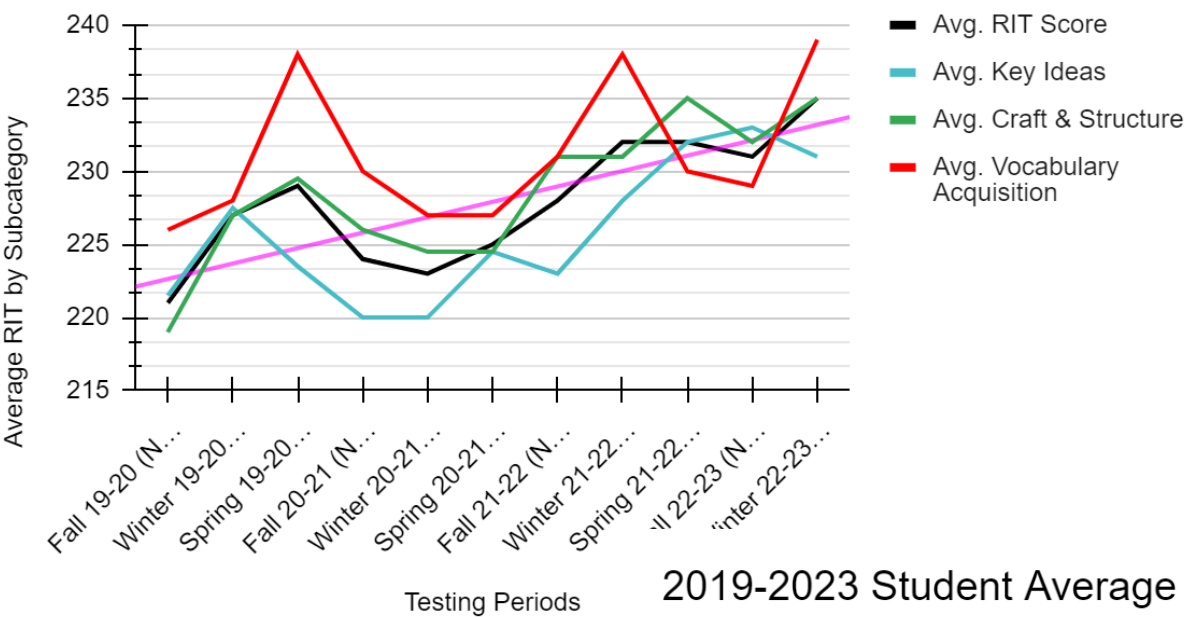
4-Year Students

Started in 2019 as 7th Graders, Now Sophomores (N = 5)



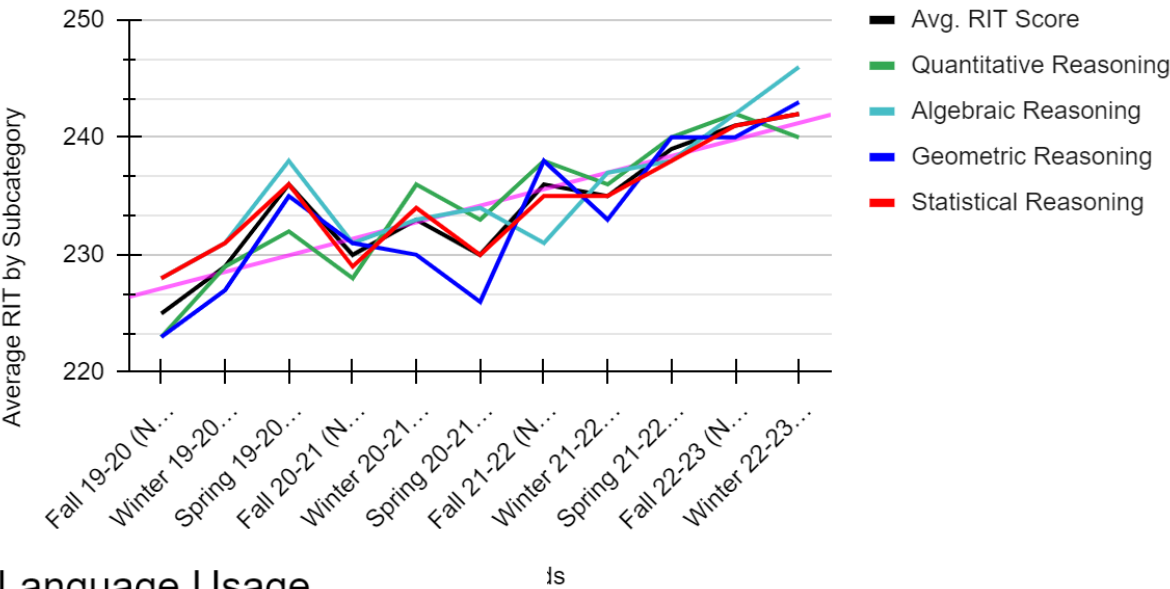
2019-2023 Student Average RIT in Reading

Started in 7th Grade Sophomores in 2023 (N = 5)



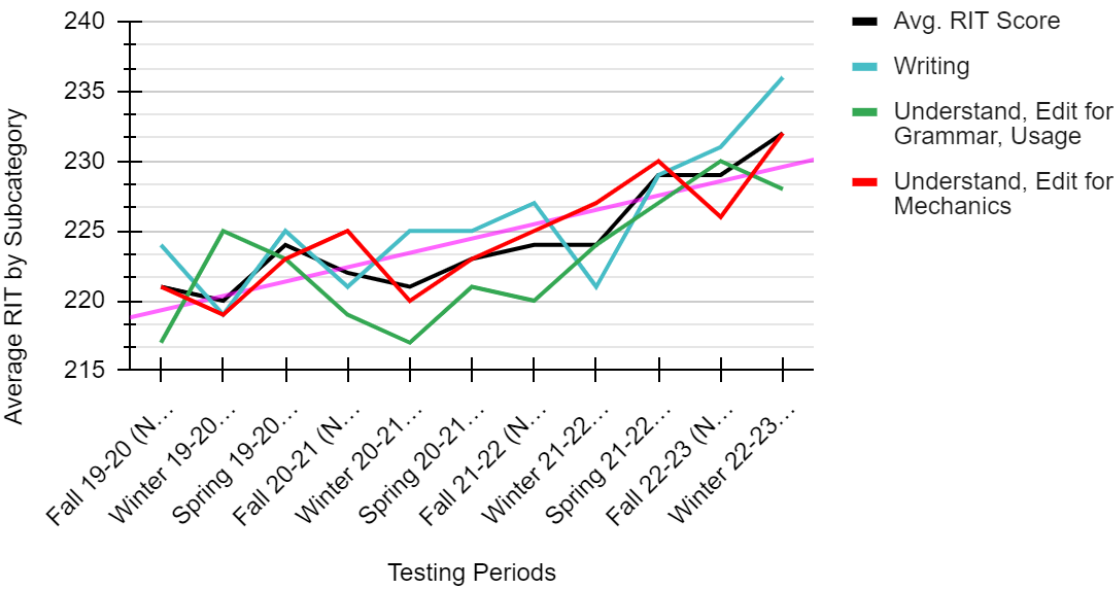
2019-2023 Student Average RIT in Math

Started in 7th Grade Sophomores in 2023 (N = 5)



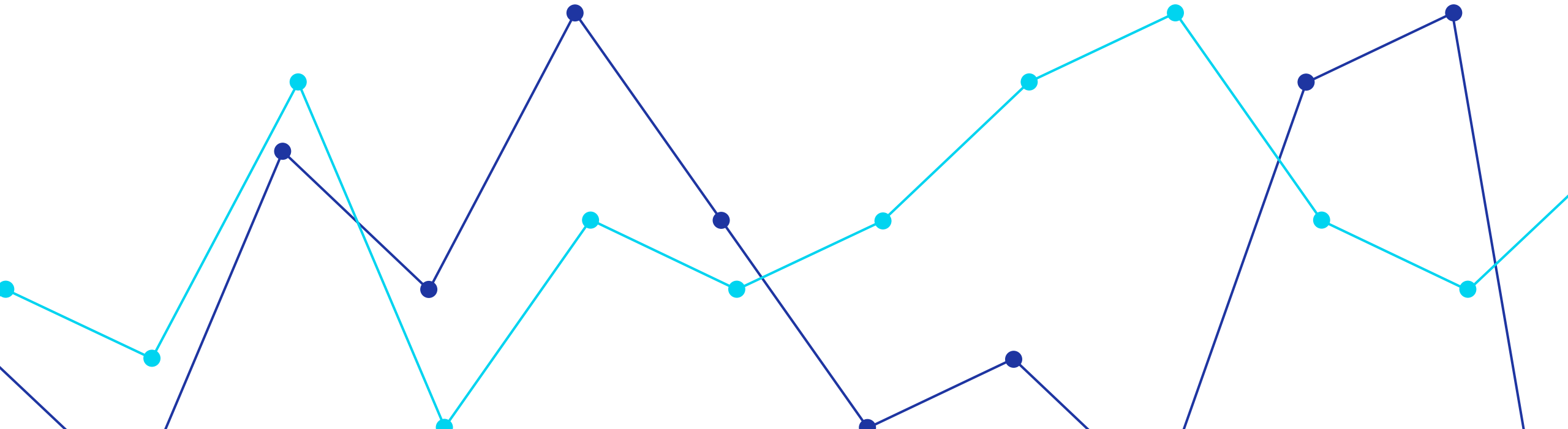
2019-2023 Student Average RIT in Language Usage

Started in 7th Grade Sophomores in 2023 (N = 5)



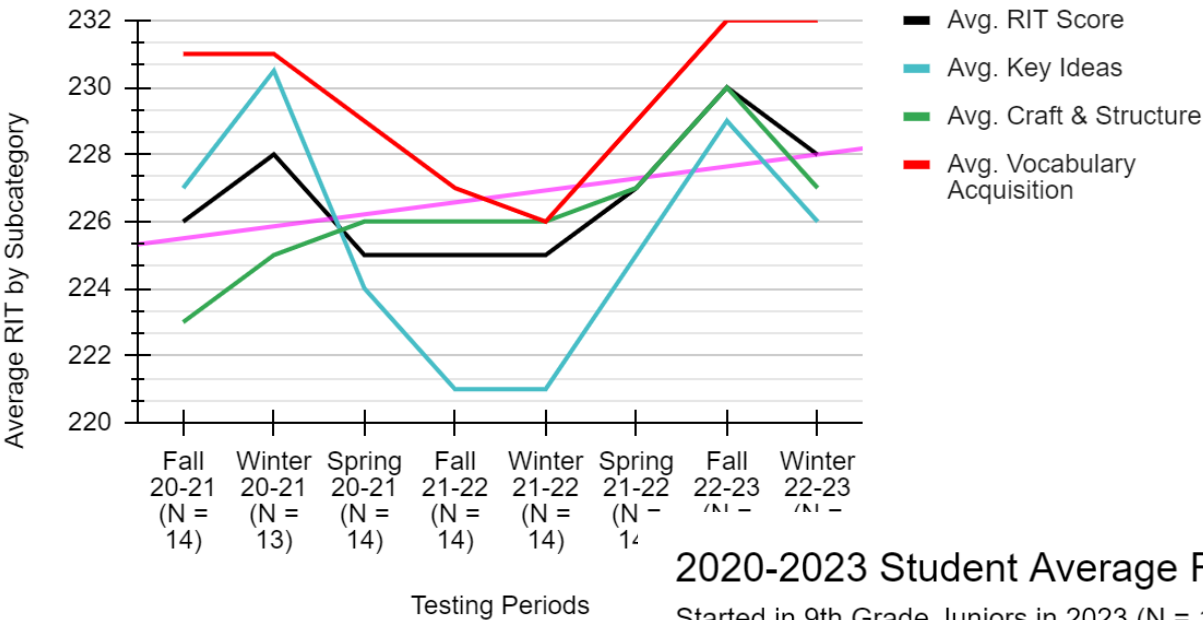
3-Year Students

Started in 2020 as 9th Graders, Now Juniors (N = 14)



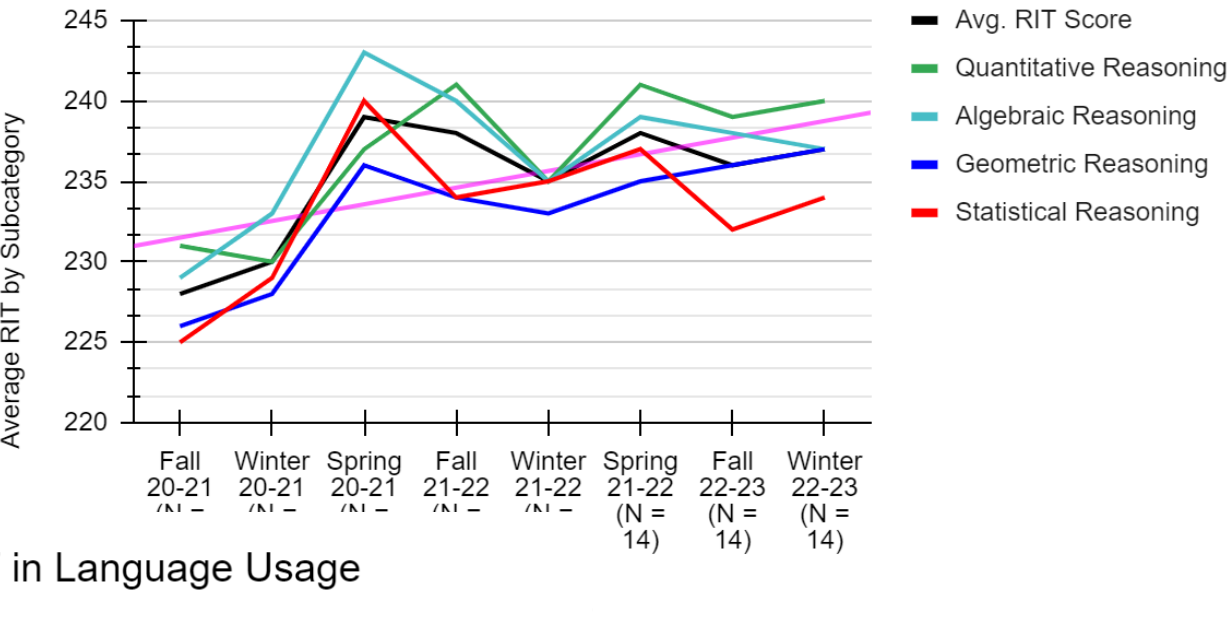
2020-2023 Student Average RIT in Reading

Started in 9th Grade Juniors in 2023 (N = 14)



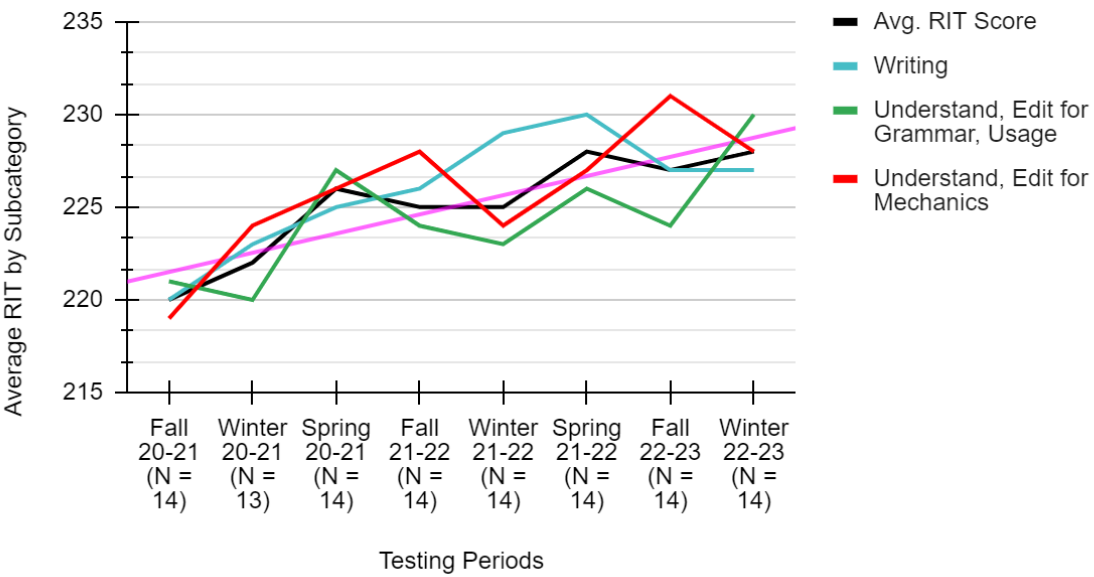
2020-2023 Student Average RIT in Math

Started in 9th Grade Juniors in 2023 (N = 14)



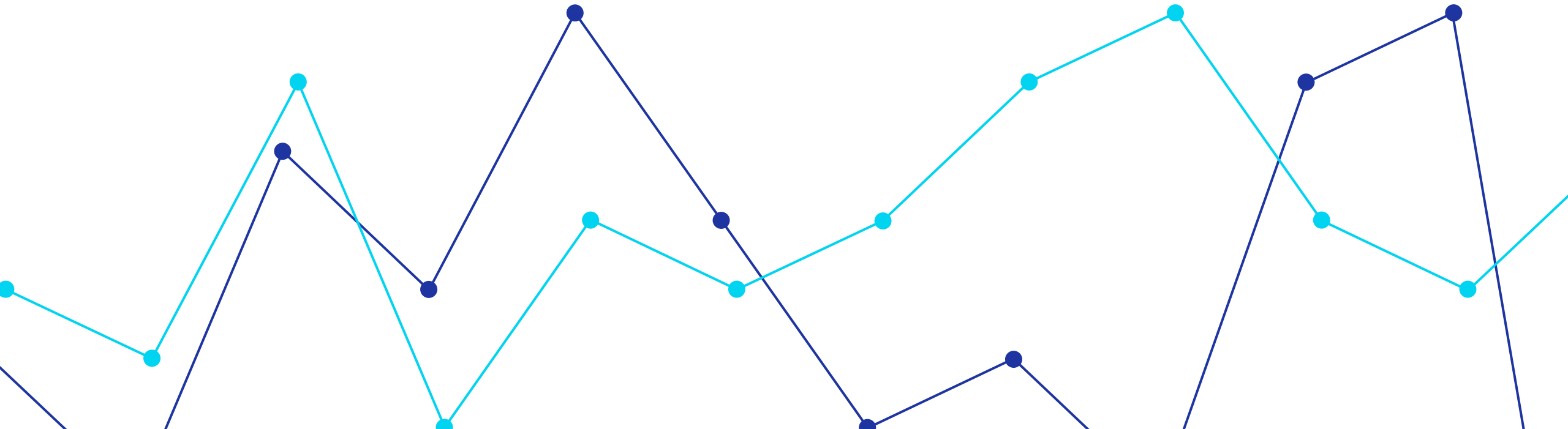
2020-2023 Student Average RIT in Language Usage

Started in 9th Grade Juniors in 2023 (N = 14)



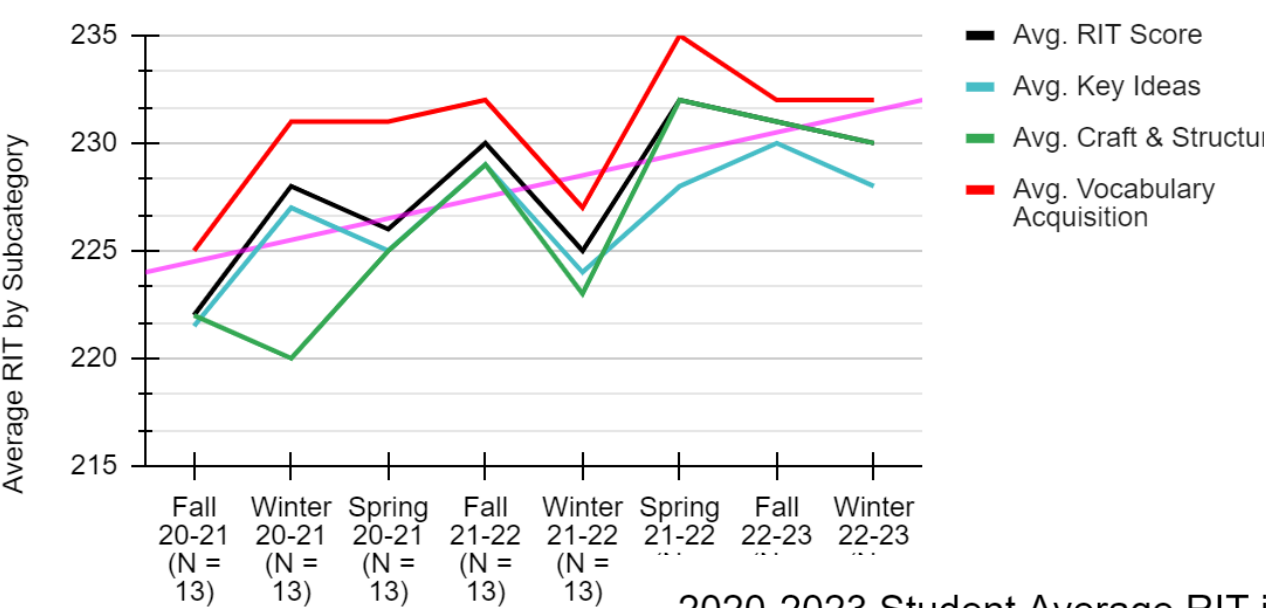
3-Year Students

Started in 2020 as 8th Graders, Now Sophomores (N = 13)



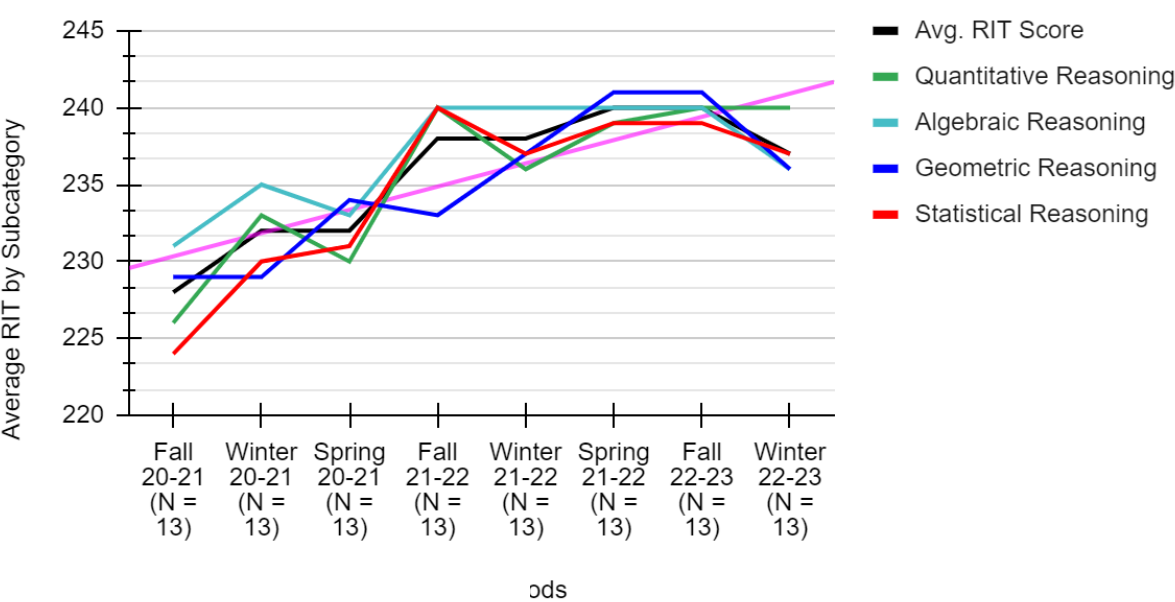
2020-2023 Student Average RIT in Reading

Started in 8th Grade Sophomores in 2023 (N =13)



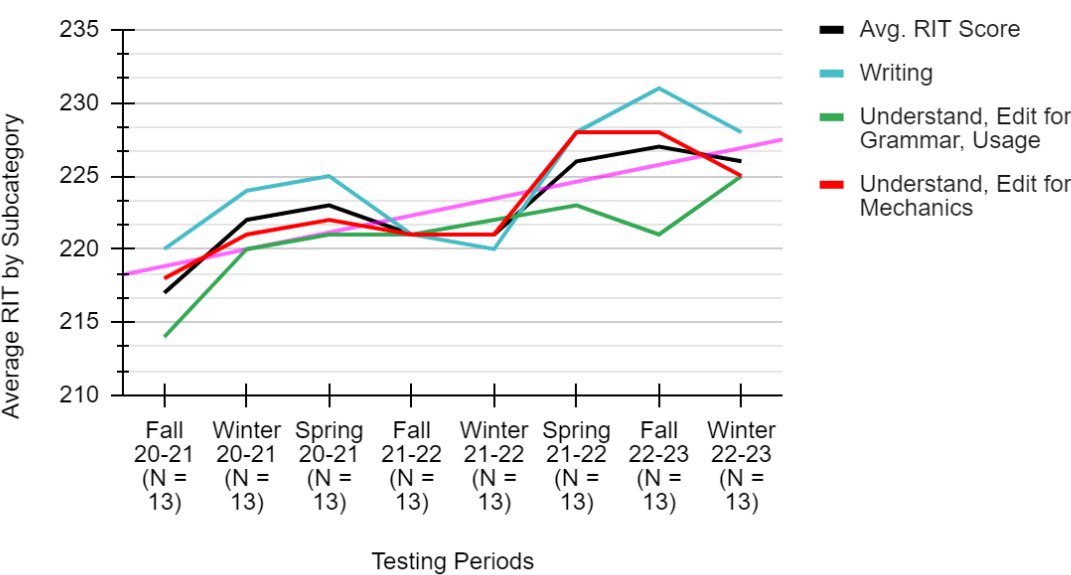
2020-2023 Student Average RIT in Math

Started in 8th Grade Sophomores in 2023 (N =13)



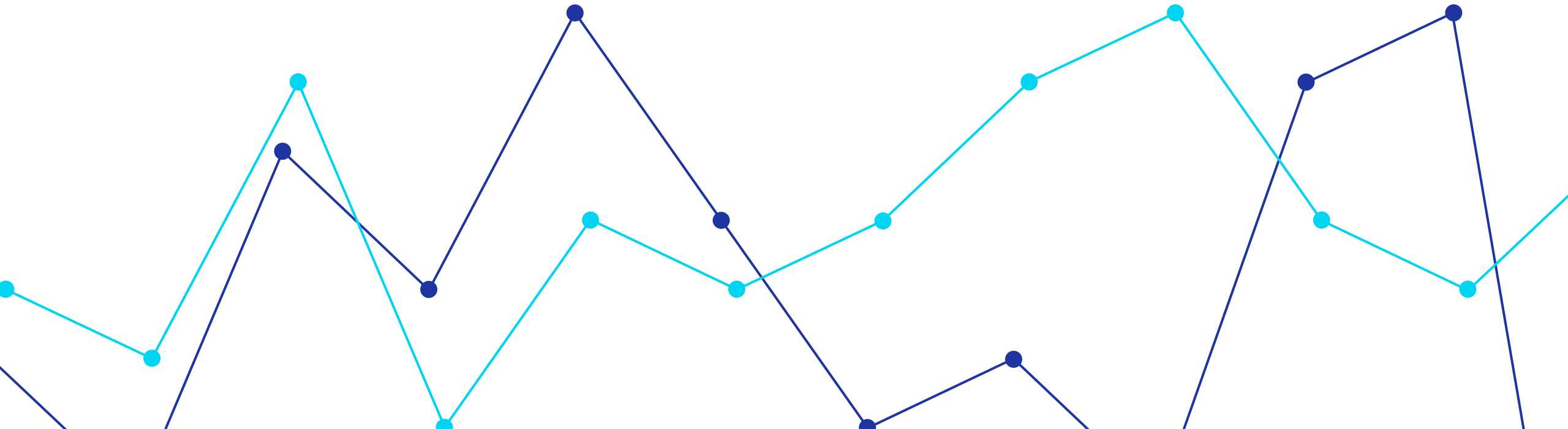
2020-2023 Student Average RIT in Language Usage

Started in 8th Grade Sophomores in 2023 (N =13)



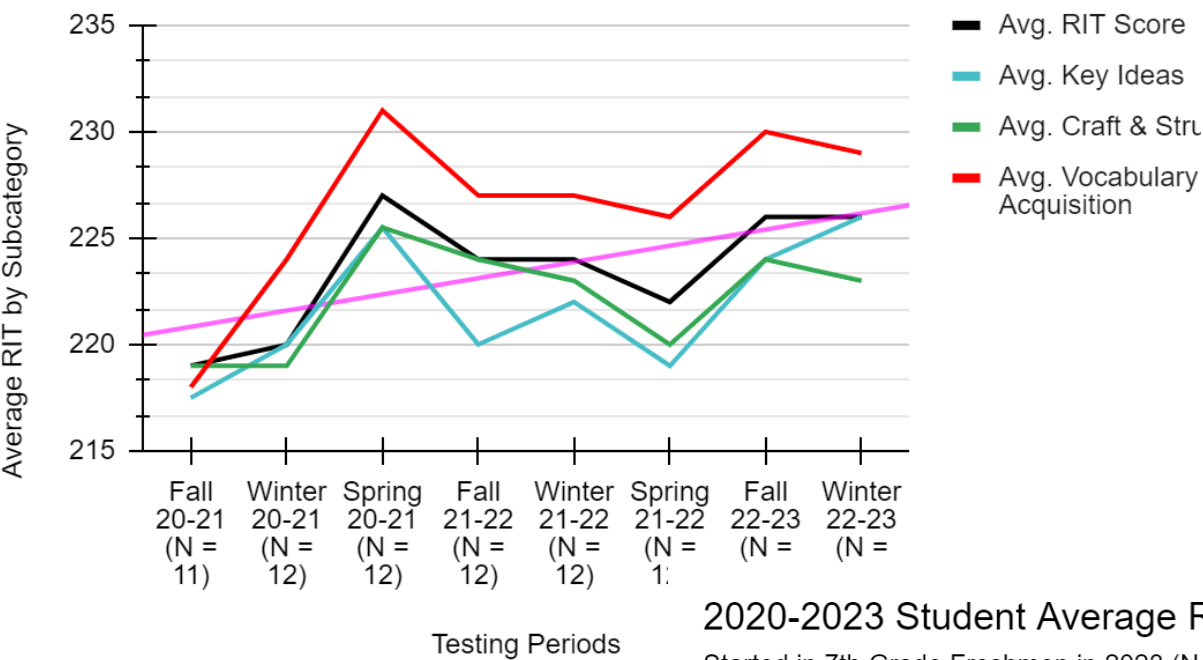
3-Year Students

Started in 2020 as 7th Graders, Now Freshmen (N = 12)



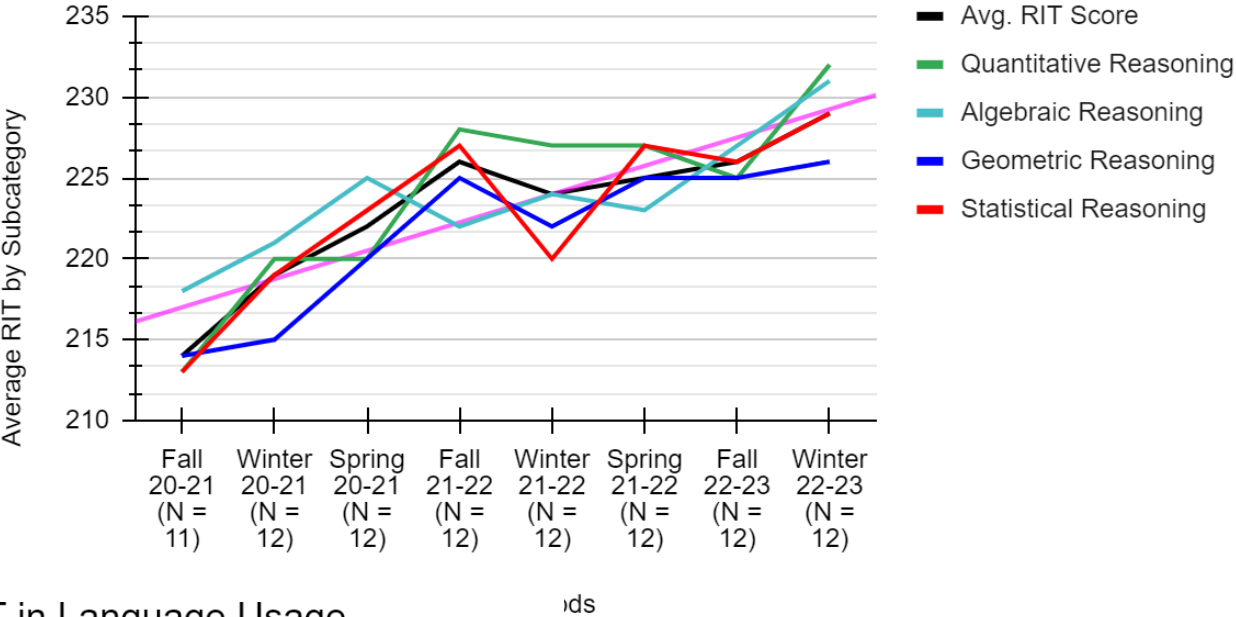
2020-2023 Student Average RIT in Reading

Started in 7th Grade Freshmen in 2023 (N = 12)



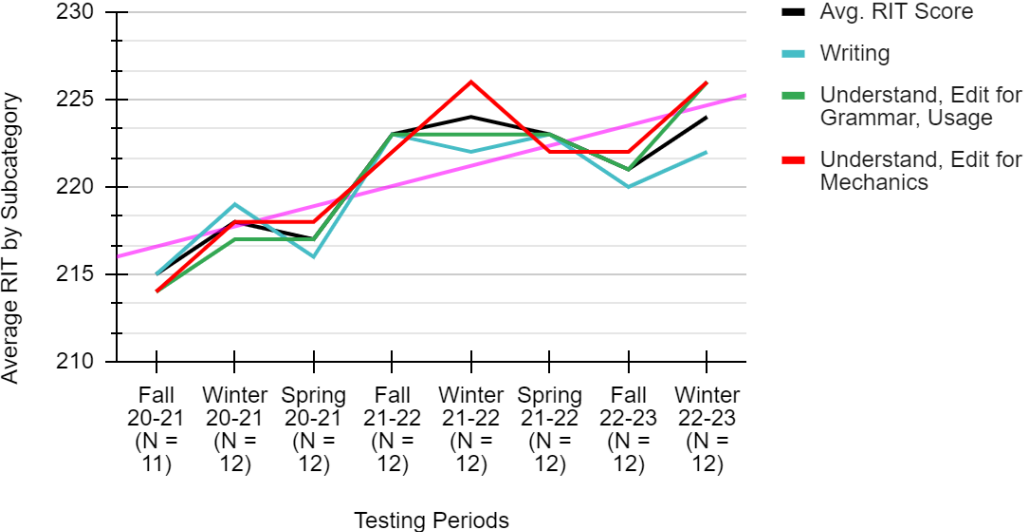
2020-2023 Student Average RIT in Math

Started in 7th Grade Freshmen in 2023 (N = 12)



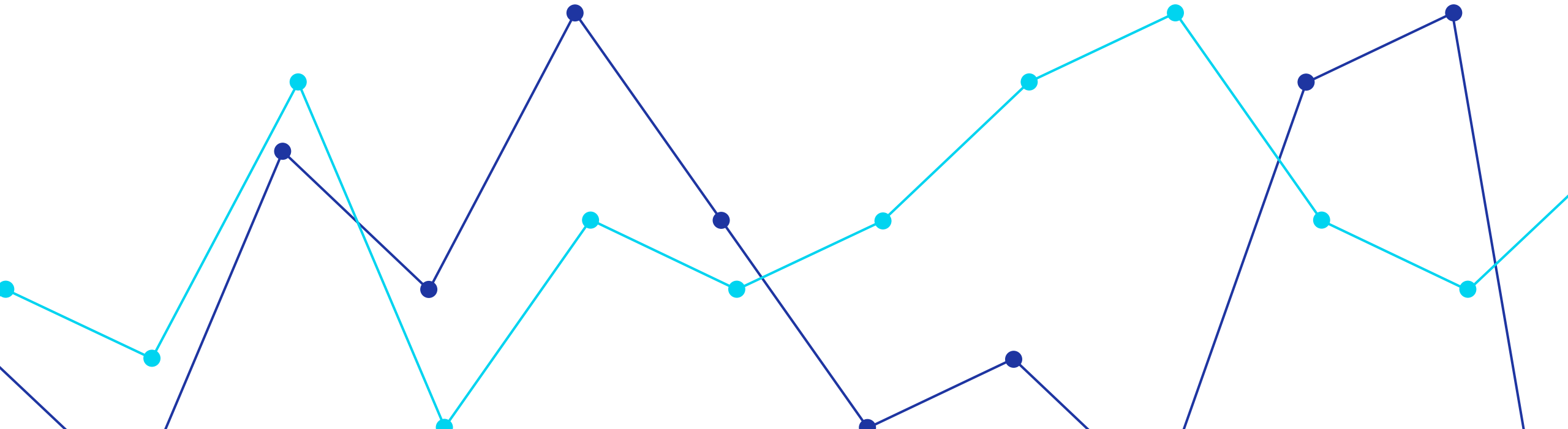
2020-2023 Student Average RIT in Language Usage

Started in 7th Grade Freshmen in 2023 (N = 12)



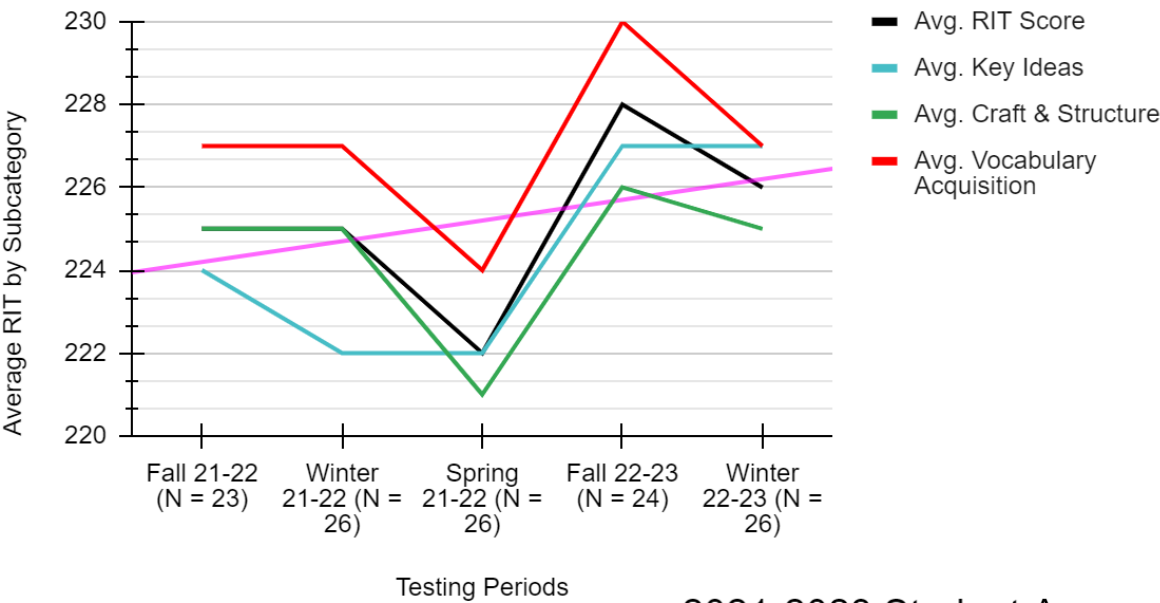
2-Year Students

Started in 2021 as 10th Graders, Now Juniors (N = 27)



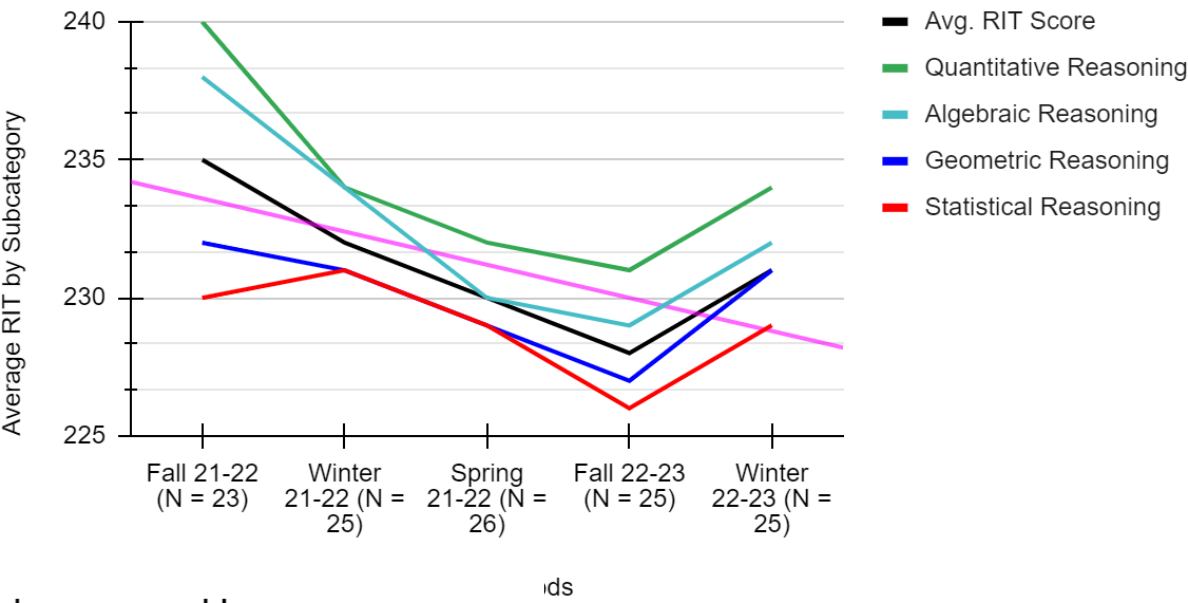
2021-2023 Student Average RIT in Reading

Started in 10th Grade Juniors in 2023 (N = 27)



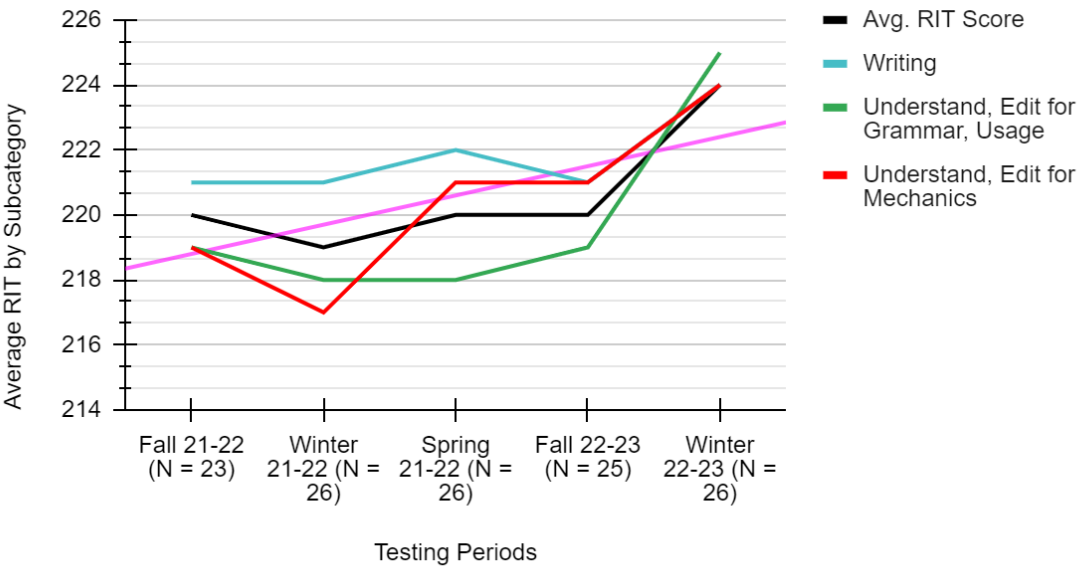
2021-2023 Student Average RIT in Math

Started in 10th Grade Juniors in 2023 (N = 27)



2021-2023 Student Average RIT in Language Usage

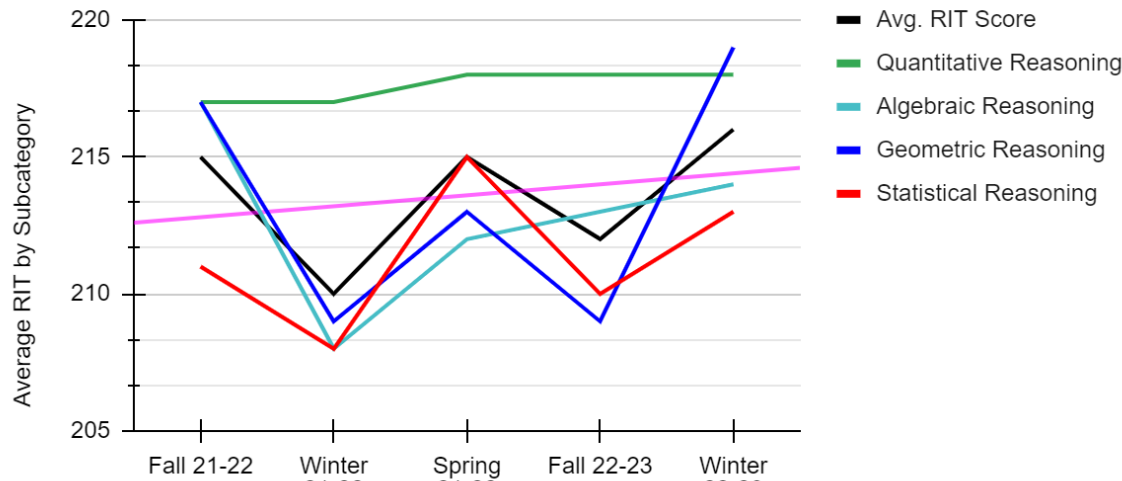
Started in 10th Grade Juniors in 2023 (N = 27)



Further Analysis

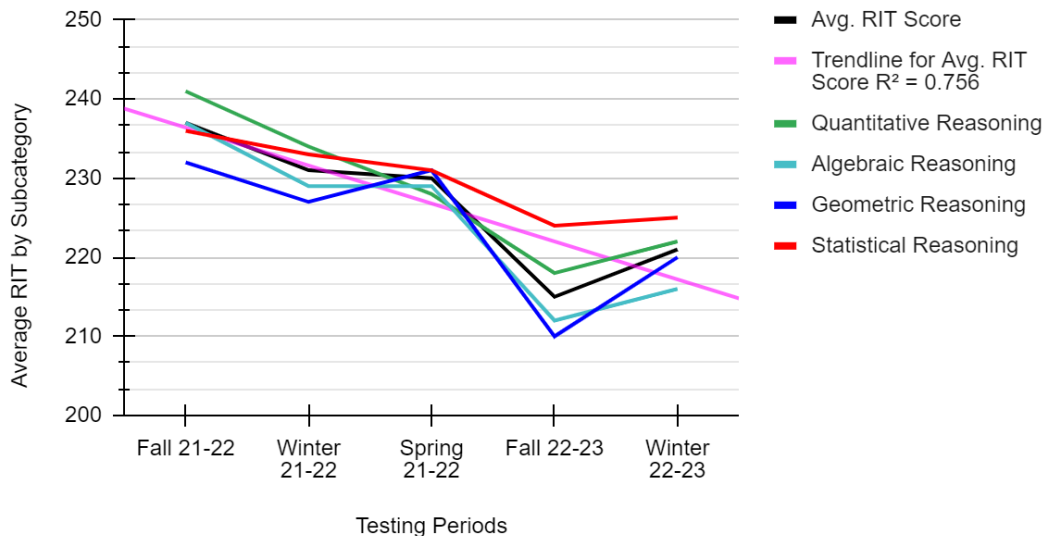
2021-2023 Student Average RIT in Math (Special Education)

Started in 10th Grade Juniors in 2023 (N = 6)



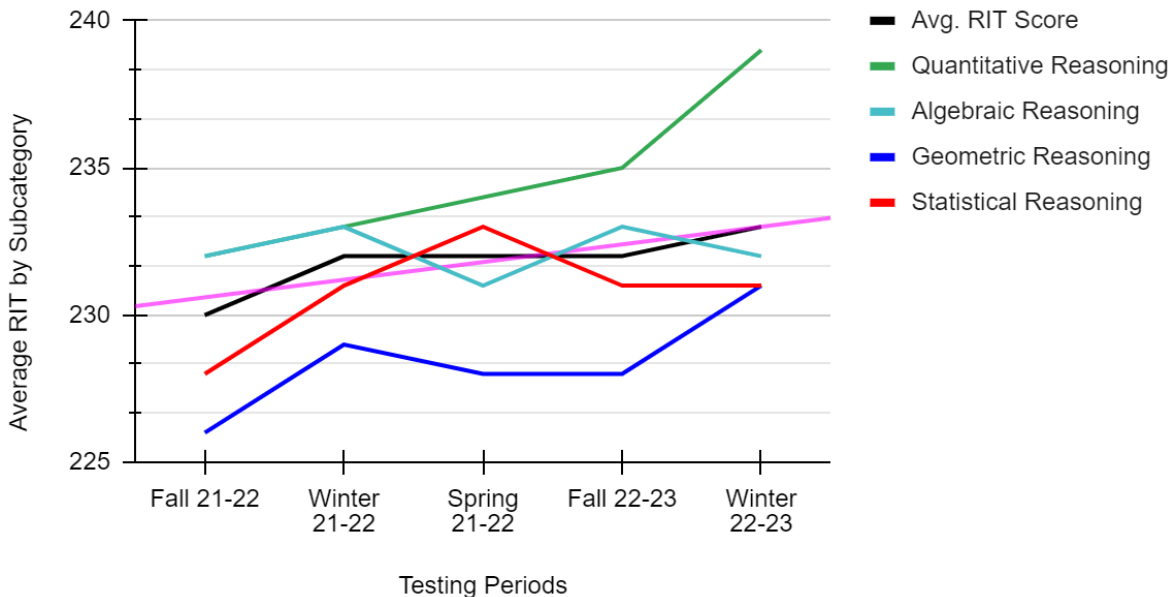
2021-2023 Student Average RIT in Math (Algebra 1 Essentials 2021-2022)

Started in 10th Grade Juniors in 2023 (N = 6)



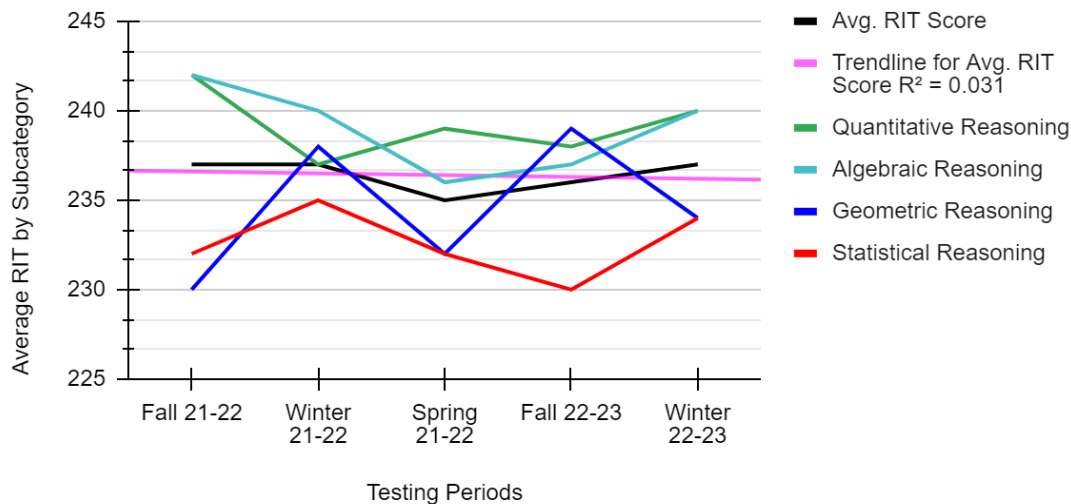
2021-2023 Student Average RIT in Math (Economically Disadvantaged)

Started in 10th Grade Juniors in 2023 (N = 14)



2021-2023 Student Average RIT in Math (Geometry 2021-2022)

Started in 10th Grade Juniors in 2023 (N = 14)

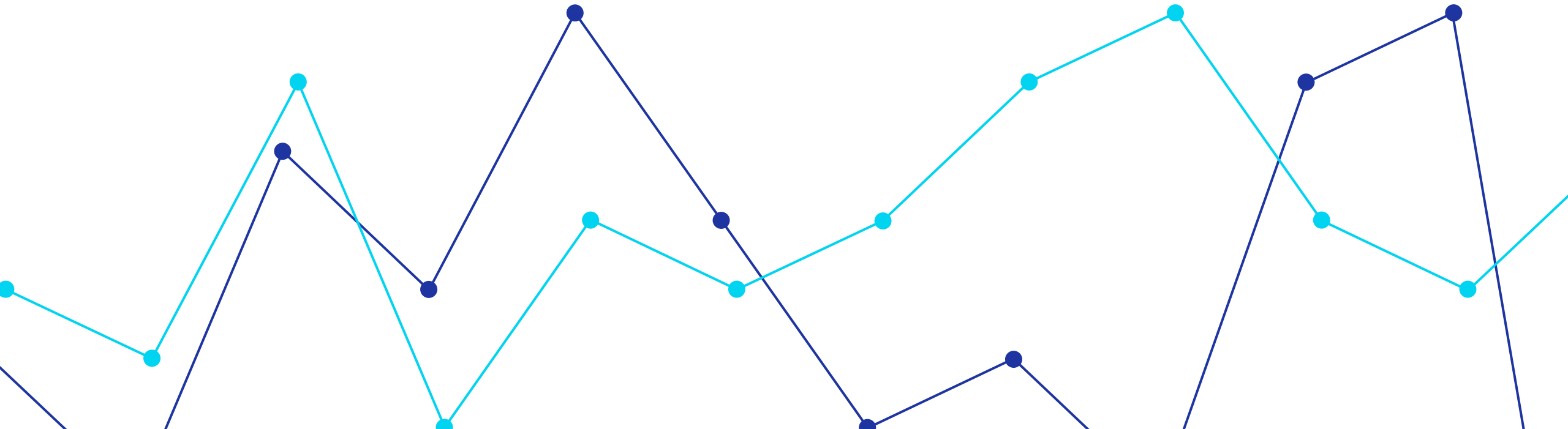


Further Analysis

- 4 of the 27 students have a 504 plan, when these students were broken out they showed overall growth in math from 2021-2022 to current.
- 6 of the 27 students have an IEP, when these students were broken out they showed overall growth in math from 2021-2022 to current.
- 14 of the 27 students are economically disadvantaged, when these students were broken out they showed overall growth in math from 2021-2022 to current.
- The 27 students in the group with a downward trend in Math had 13 different paths of course enrollments in math between their 10th grade math enrollment and their 11th grade math enrollment. For ease of analysis, students were grouped by which course(s) they were enrolled in 2021-2022 (this year shows the downward trend).
 - 2 students were enrolled in Consumer Math in 2021-2022, overall these students showed growth in math
 - 1 student was enrolled in Pre-Algebra in 2021-2022, this student showed growth in math
 - 3 students were enrolled in Geometry Essentials in 2021-2022, overall these students showed growth in math
 - 6 students were enrolled in Algebra 1 Essentials in 2021-2022, overall these students showed the largest decline in math growth
 - 1 student was enrolled in Algebra 1 in 2021-2022, this student declined in math growth
 - 14 students were enrolled in Geometry in 2021-2022, overall these students had a small decline in math growth

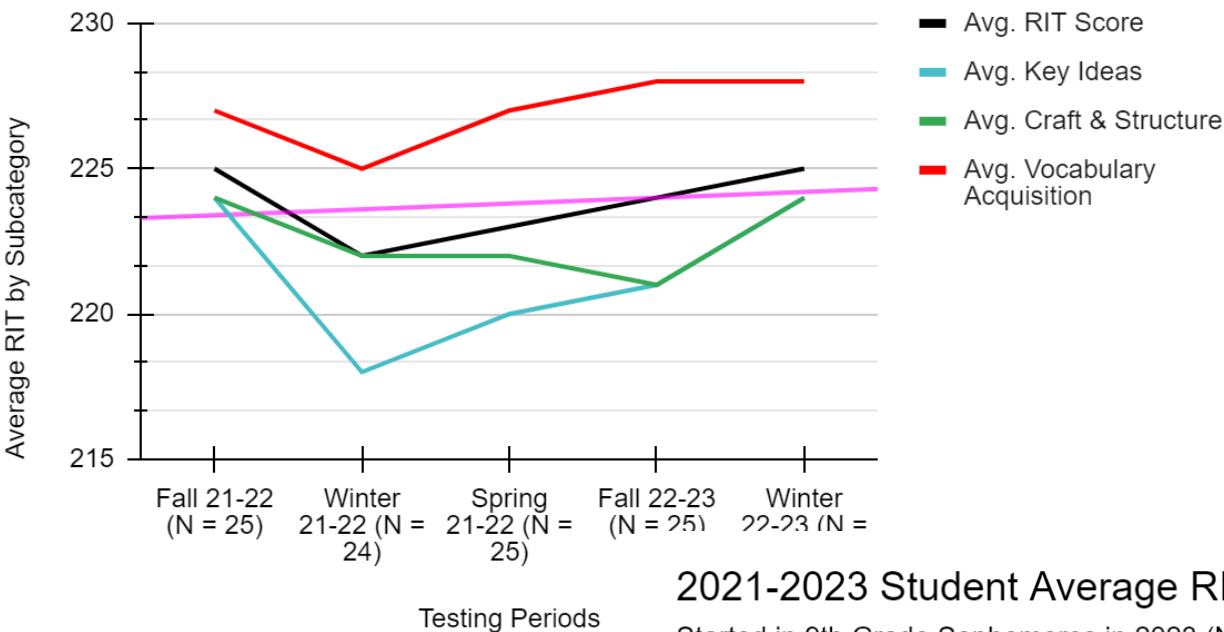
2-Year Students

Started in 2021 as 9th Graders, Now Sophomores (N = 26)



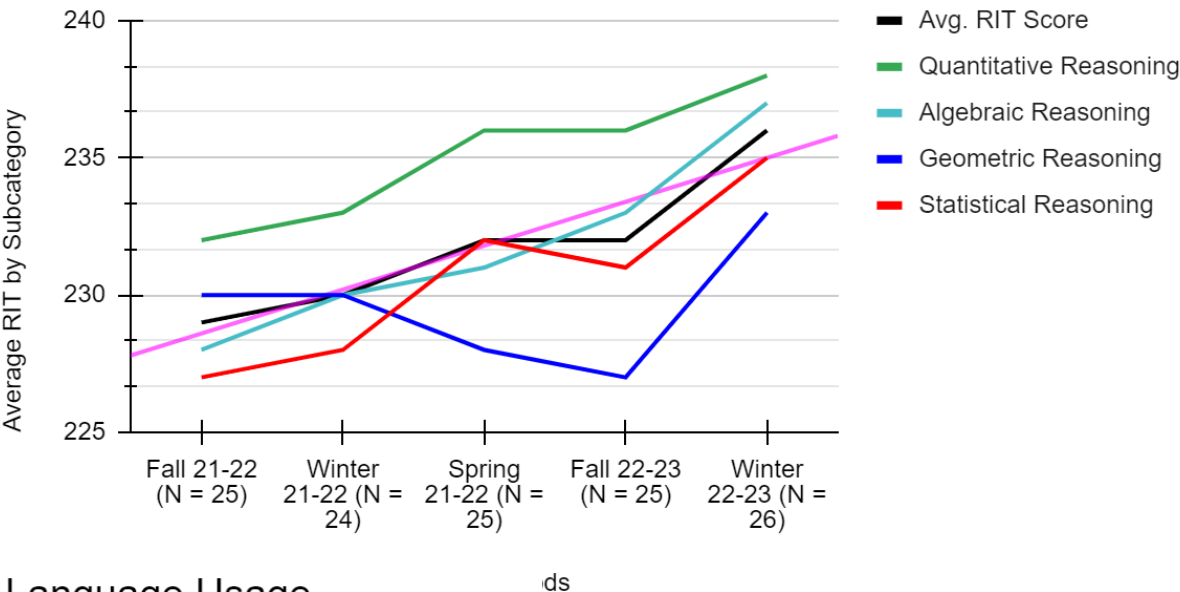
2021-2023 Student Average RIT in Reading

Started in 9th Grade Sophomores in 2023 (N = 26)



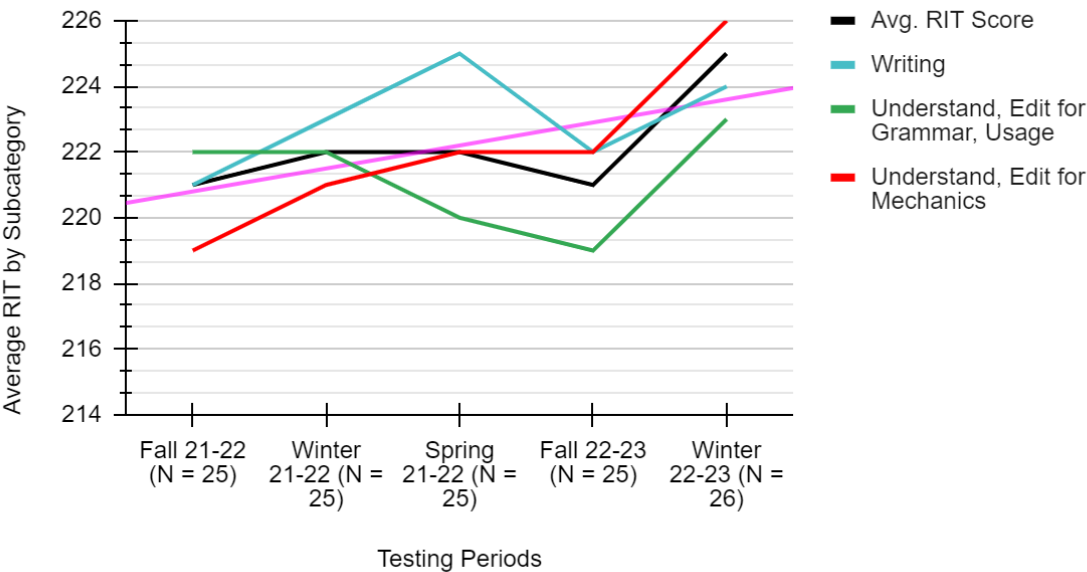
2021-2023 Student Average in Math

Started in 9th Grade Sophomores in 2023 (N = 26)



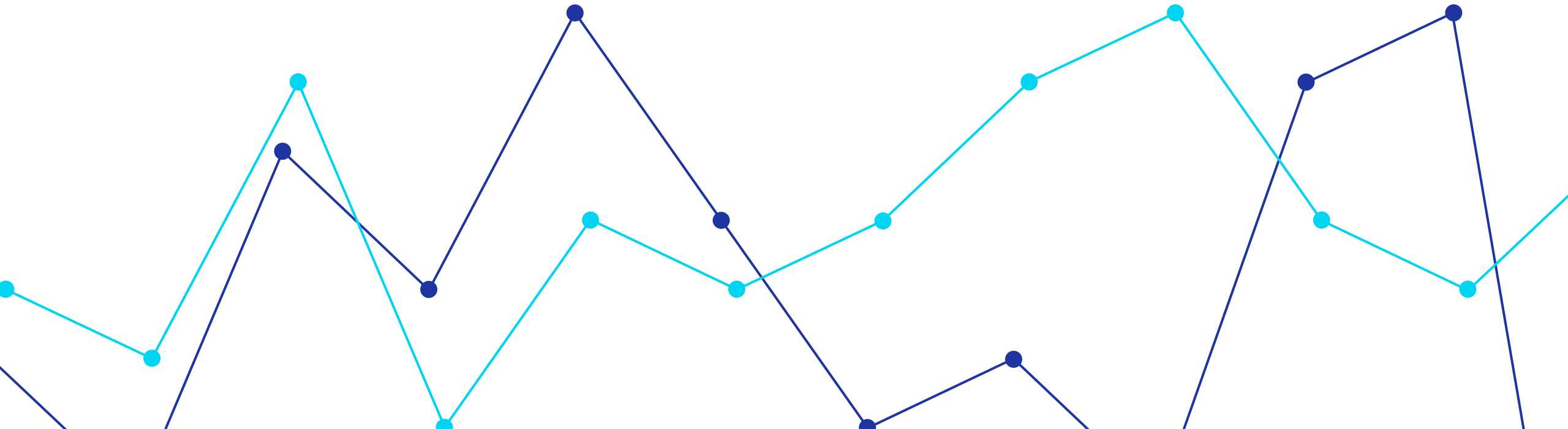
2021-2023 Student Average RIT in Language Usage

Started in 9th Grade Sophomores in 2023 (N = 26)



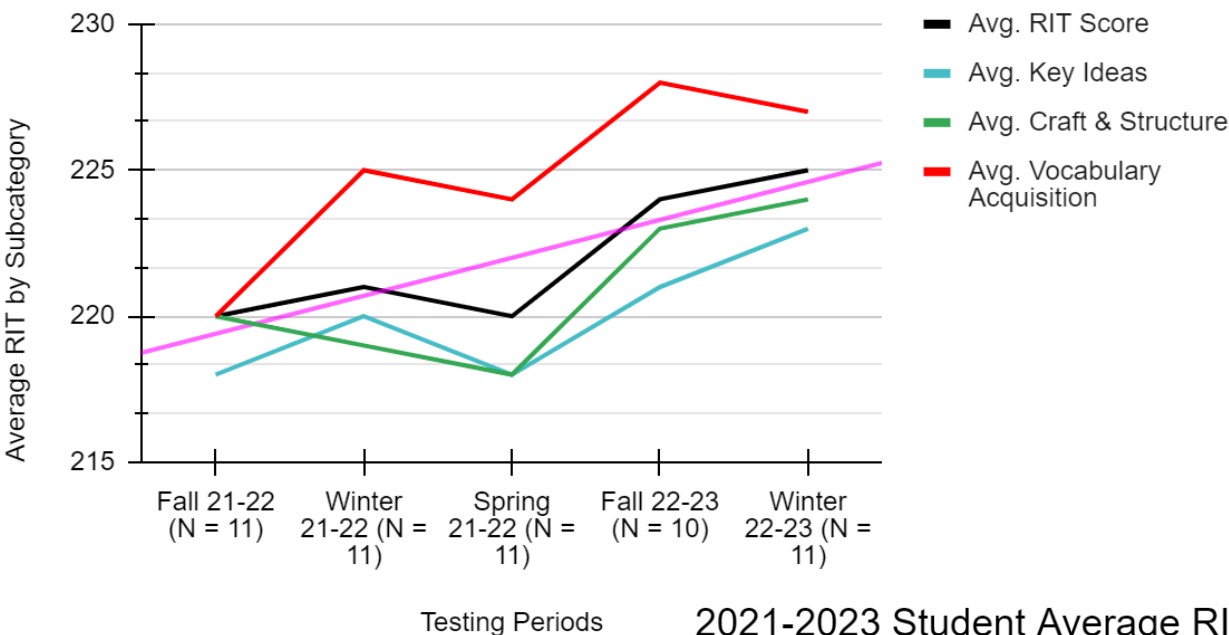
2-Year Students

Started in 2021 as 8th Graders, Now Freshmen (N = 11)



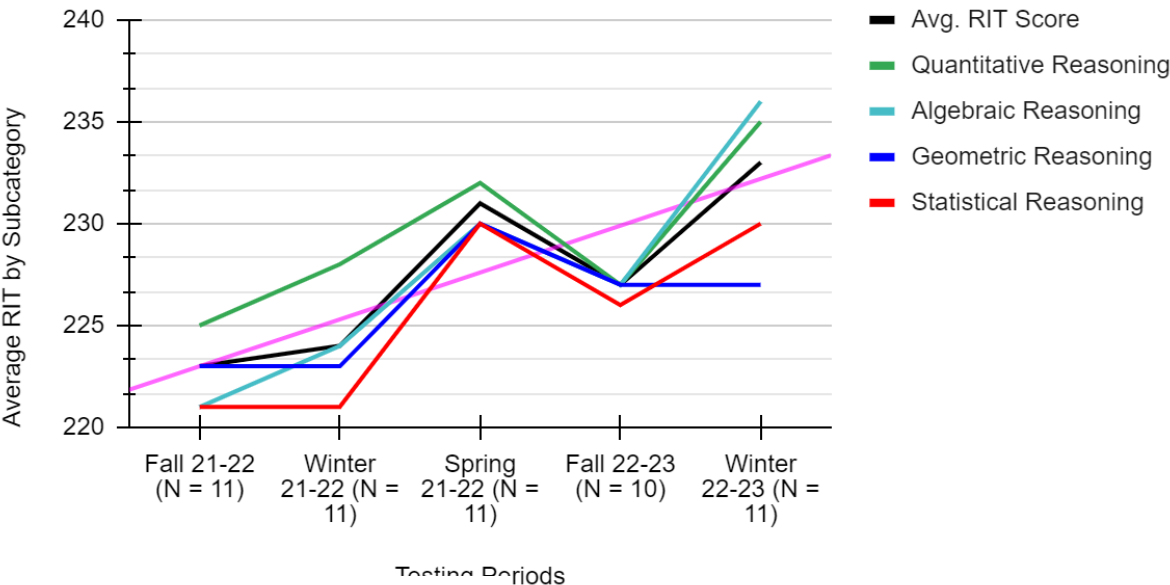
2021-2023 Student Average RIT in Reading

Started in 8th Grade Freshmen in 2023 (N =11)



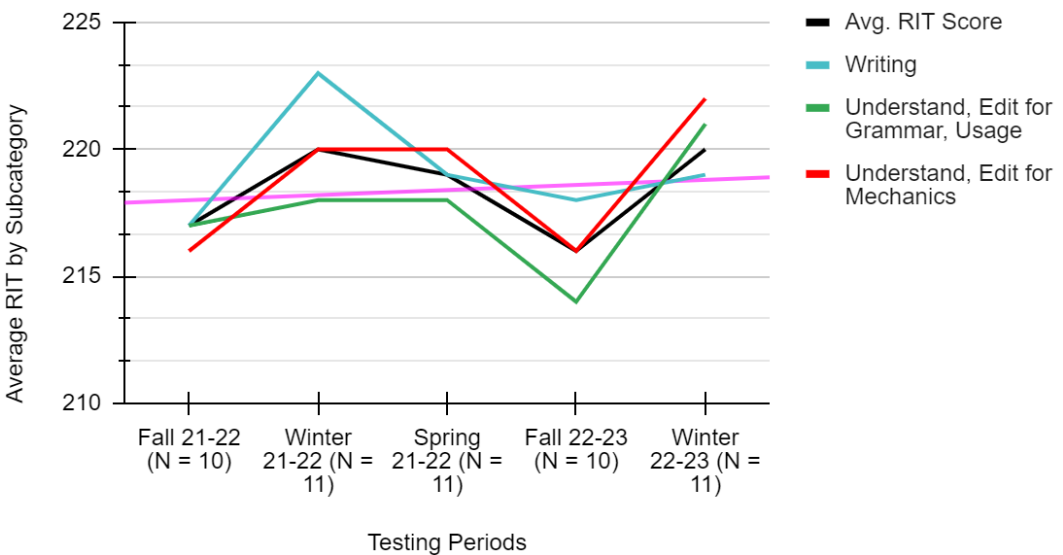
2021-2023 Student Average RIT in Math

Started in 8th Grade Freshmen in 2023 (N =11)



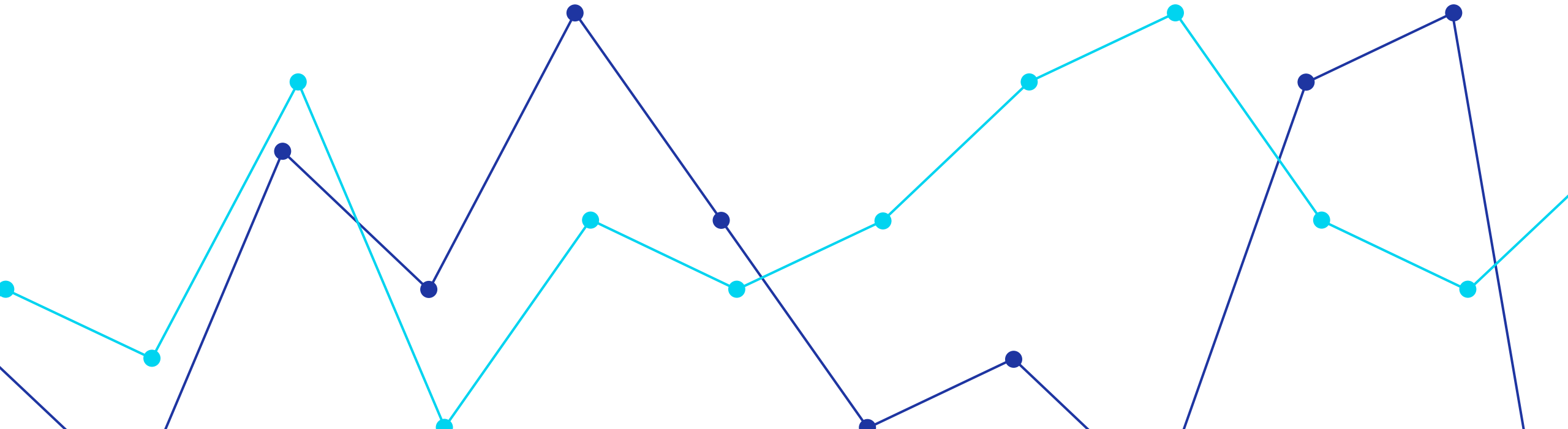
2021-2023 Student Average RIT in Language Usage

Started in 8th Grade Freshmen in 2023 (N =11)



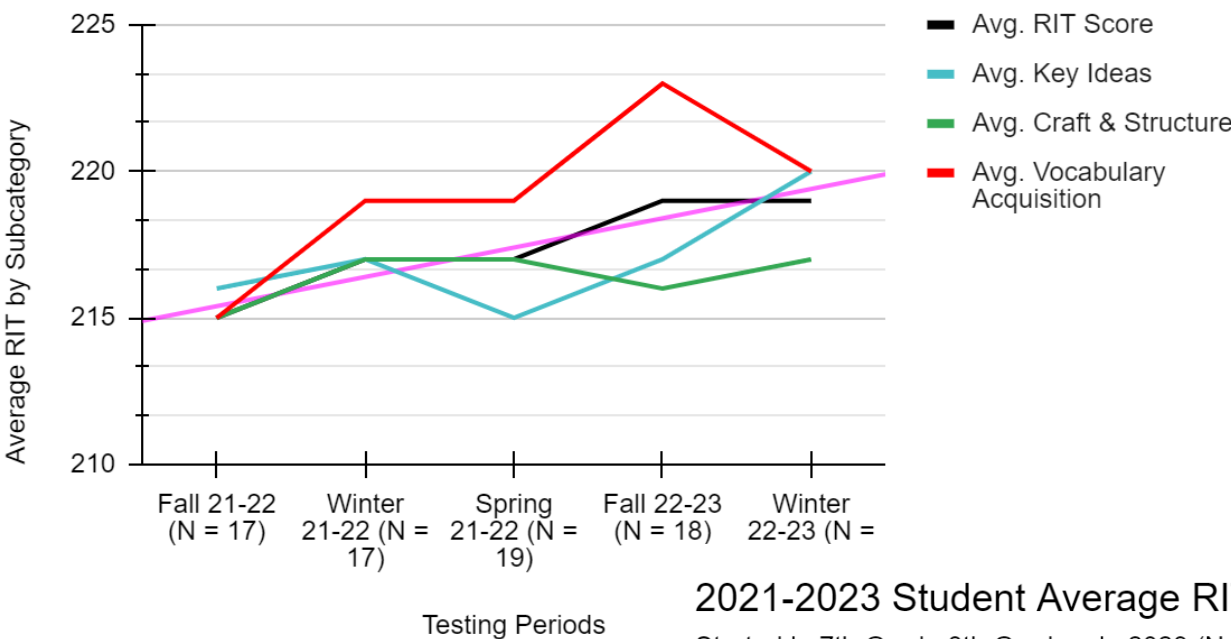
2-Year Students

Started in 2021 as 7th Graders, Now 8th Graders (N = 19)



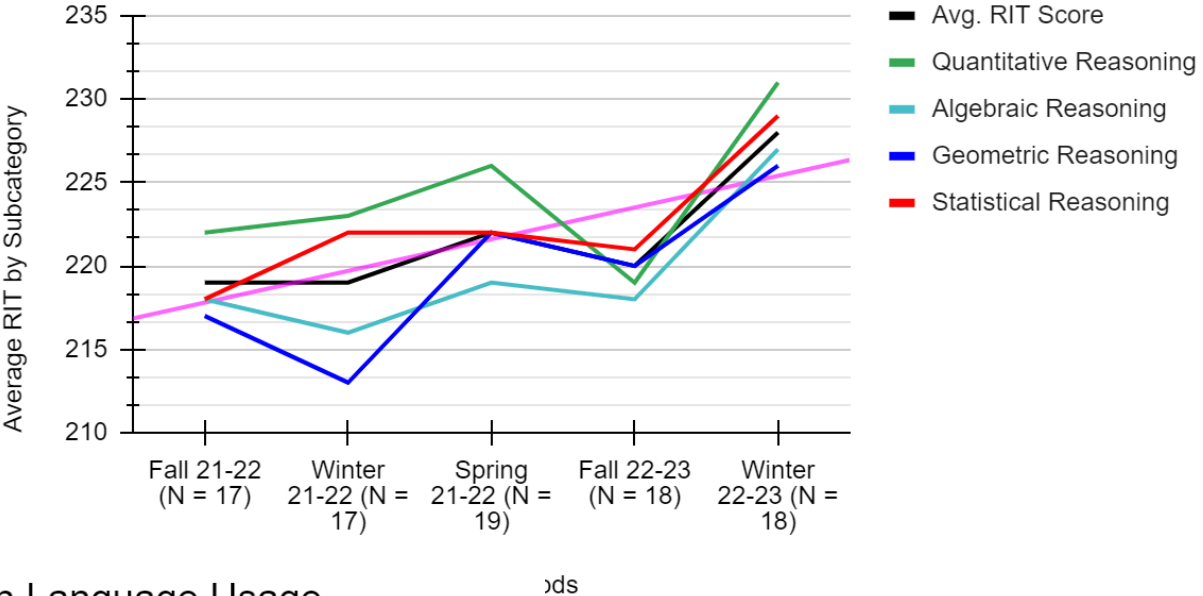
2021-2023 Student Average RIT in Reading

Started in 7th Grade 8th Graders in 2023 (N = 19)



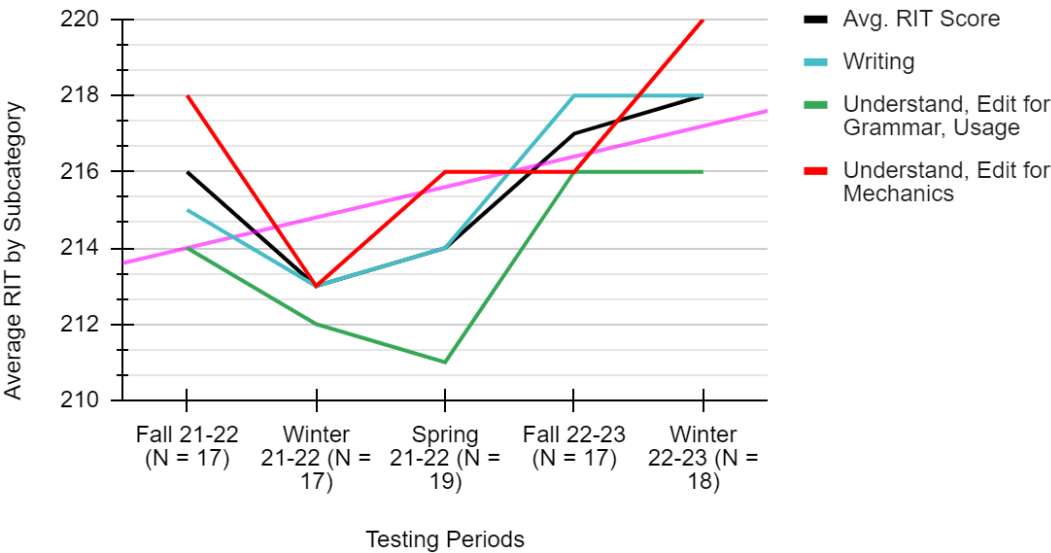
2021-2023 Student Average RIT in Math

Started in 7th Grade 8th Graders in 2023 (N = 19)



2021-2023 Student Average RIT in Language Usage

Started in 7th Grade 8th Graders in 2023 (N = 19)



Recommendations

- As we are looking over the data we look at the trends and then take that back to the standards and what is covered in each map and over the traditional path of students at MEVA
- A recommendation is to look at the coverage of standards and to look at your map and see where can I potentially cover standards that may be lacking over the course of 2 years at MEVA (MS) and/or 3 or 4 years at MEVA (HS)
- The charts on the next two slides show the coverage of standards for each core content area course, please note that the standards in the HS classes are only the HS standards if a course also covers lower-level standards they are not included in these charts.

English Standards																
	#L	#L Covered	%L Covered	#S&L	#S&L Covered	%S&L Covered	#R	#R Covered	%R Covered	#W	#W Covered	%W Covered	#Tested	#Tested Covered	%Tested Covered	Avg.
7 Language Arts	36	21	58%	16	12	75%	24	18	75%	15	14	93%	18	18	100%	75%
8 Language Arts	36	29	81%	16	12	75%	24	18	75%	15	15	100%	18	18	100%	83%
English Foundations I	23	23	100%	16	16	100%	25	25	100%	15	15	100%	22	22	100%	100%
English Foundations II	23	15	65%	16	5	31%	25	25	100%	15	13	87%	22	20	91%	71%
American Literature	23	14	61%	16	9	56%	25	15	60%	15	12	80%	22	11	50%	64%
World Literature	23	19	83%	16	13	81%	25	24	96%	15	15	100%	22	17	77%	90%

Math Standards																
	# QR	#QR Covered	%QR Covered	#AR	# AR Covered	%AR Covered	#GR	#GR Covered	%GR Covered	#SR	#SR Covered	%SR Covered	#Tested	#Tested Covered	%Tested Covered	
Math Foundations I	20	14	70%	8	2	25%	8	6	75%	15	11	73%	43	33	77%	
Math Foundations II	3	3	100%	22	22	100%	15	14	93%	5	5	100%	36	35	97%	
Pre-Algebra*	41	0	0%	105	0	0%	60	0	0%	45	1	2%	94	0	0%	
Algebra 1 Essentials*	41	5	12%	105	44	42%	60	0	0%	45	15	33%	94	38	40%	
Algebra 1*	41	8	20%	105	51	49%	60	0	0%	45	13	29%	94	41	44%	
Geometry Essentials*	41	0	0%	105	5	5%	60	48	80%	45	0	0%	94	33	35%	
Geometry*	41	9	22%	105	5	5%	60	52	87%	45	0	0%	94	31	33%	
Algebra 2*	41	7	17%	105	40	38%	60	0	0%	45	12	27%	94	15	16%	
Traditional Path	41	21	51%	105	75	71%	60	52	87%	45	23	51%	94	77	82%	

*Note the standards are the HS standards only, as these are HS level classes

Social Studies Standards																		
	#CG	#CG Covered	%CG Covered	#PF	#PF Covered	%PF Covered	#G	#G Covered	%G Covered	#H	#H Covered	%H Covered	#Literacy	#Covered	%Covered	#Writing	#Covered	%Covered
7 History	18	8	44%	12	0	0%	10	7	70%	17	17	100%	10	0	0%	9	0	0%
8 History	18	18	100%	12	7	58%	10	10	100%	17	17	100%	10	0	0%	9	0	0%
Geography	19	0	0%	16	0	0%	10	10	100%	14	2	14%	10	5	50%	9	3	33%
Civics	19	19	100%	16	0	0%	10	0	0%	14	2	14%	10	6	60%	9	7	78%
Personal Finance	19	0	0%	16	15	94%	10	0	0%	14	0	0%	10	0	0%	9	3	33%
US History	19	13	68%	16	0	0%	10	2	20%	14	14	100%	10	1	10%	9	8	89%
Modern World History	19	5	26%	16	3	19%	10	3	30%	14	11	79%	10	8	80%	9	4	44%
Traditional Path	19	19	100%	16	15	94%	10	9	90%	14	14	100%	10	7	70%	9	8	89%
Science Standards																		
	#ES	#ES Covered	%ES Covered	#LS	#LS Covered	%LS Covered	#PS	#PS Covered	%PS Covered	#ETS	#ETS Covered	%ETS Covered	#Literacy	#Covered	%Covered	#Writing	#Covered	%Covered
7 Life Science	15	6	40%	21	21	100%	19	2	11%	4	0	0%	10	10	100%	9	9	100%
8 Physical Science	15	6	40%	21	5	24%	19	19	100%	4	3	75%	10	9	90%	9	9	100%
Earth Science	19	19	100%	24	17	71%	24	2	8%	4	4	100%	10	10	100%	9	9	100%
Biology Essentials	19	12	63%	24	24	100%	24	0	0%	4	1	25%	10	10	100%	9	9	100%
Biology	19	12	63%	24	24	100%	24	0	0%	4	1	25%	10	10	100%	9	9	100%
Chemistry Essentials	19	3	16%	24	9	38%	24	15	63%	4	3	75%	10	10	100%	9	9	100%
Chemistry	19	3	16%	24	9	38%	24	15	63%	4	3	75%	10	10	100%	9	9	100%
Physics	19	5	26%	24	2	8%	24	16	67%	4	3	75%	10	10	100%	9	9	100%
Traditional Path	19	19	100%	24	24	100%	24	16	67%	4	4	100%	10	10	100%	9	9	100%

Professional Development Needs Survey

- We want to hear about your preferred focus areas.
- What would I like to see in the near future for professional development at MEVA?
- Results and Plan.

PD SURVEY RESULTS 2023



Percent Chosen	Topic	Link to PD video
60%	BS Gradebook	https://meva.brightspace.com/d2l/le/lessons/6681/folders/2301
	BS Calendar	https://meva.brightspace.com/d2l/le/lessons/6681/lessons/2354
	BS Groups	https://meva.brightspace.com/d2l/le/lessons/6681/lessons/2346
	BS Question Library	https://meva.brightspace.com/d2l/le/lessons/6681/folders/2269
50%	Pear Deck	https://support.goguardian.com/s/pear-deck-topics
40%	BS Assignments	https://meva.brightspace.com/d2l/le/lessons/6681/folders/2263
	BS Quizzes	https://meva.brightspace.com/d2l/le/lessons/6681/folders/2284
30%	Google for Education	https://edu.google.com/intl/ALL_us/
	Zoom App	https://support.zoom.us/hc/en-us/categories/200101697
	BS Bongo	https://meva.brightspace.com/d2l/le/lessons/6681/units/69231
20%	Creator +	https://meva.brightspace.com/d2l/le/lessons/6681/units/83858
	Data Collection	https://meva.brightspace.com/d2l/le/lessons/6681/units/82675
	Subject Area Specific	Each Subject area plans days for applicable workshops

Teacher Navigator Help Desk time is available everyday except Monday from 3:00 to 4:00 PM or by appointment.

<https://mainevirtual-org.zoom.us/j/3686555523?pwd=dnNIWHFRTZBMjZVeW9VNDh2V0xvZz09>

Guidance Update

- Heather Tyler and Dan Pierce will provide a guidance update.

Eighth Grade Advisory Update

- We are prioritizing engaging and retaining eighth grade students due to (past) patterns of high turnover, and significant academic needs.
- Prior year data suggest that we retain fewer 8th grade students during the academic year and getting them to enter high school at MEVA is a hard sell.
- Eighth graders also have significant academic needs, as evidenced by their special education identification rate.
- Dr. Chapdelaine will provide an update on ongoing advisory activities that are aimed to mitigate these issues.
- What is new in the 8th grade?



8th Grade Advisory



Highlight reading skills when we do things

We are:

- Highlighting the importance of Reading
 - Working on career exploration
 - Processing about choices and decision making
- Analyzing
 - Locating information
 - Comparing and contrasting
 - Summarizing and responding
 - Determining and distinguishing
 - Understanding in context

Virtual Graduation Ceremonies Planning

- We are planning a virtual high school graduation ceremony on June 2nd, 2023, at 2:00 pm.
- Our middle school (virtual) step up day is tentatively planned for June 9th, 2023, at 11:00 am.
- Student and faculty planning has started.
- We are maintaining communication lists.
- We are hosting a graduation planning club for high school students.

Other

- We will factor the mid-year data analysis into our Comprehensive Needs Assessment.
- Open Enrollment for SY-2023/2024 begins on Monday, January 27th.
- Re-registration for SY-2023/2024 begins on Monday, February 27th.
- Any other topics?
- Next Meeting is on Monday, February 12th, at 3:00 pm.
- February Break: Monday February 20th through Friday, 24th. Please cancel all your live sessions to suit.

Individual Learning Plans (ILPs)

Specific Learning Goal to Meet Each Student's Needs: The student will develop career readiness skills through experiential opportunities.

➤ What do you do or want to do with your time?

Career Readiness Experiences/Opportunities: Employment, internships, virtual job shadowing, volunteering activities, clubs and organizations, portfolio projects, and Career Planning, Early College and AP4ALL courses.

➤ What can MEVA offer you to match your interests?

Strategy: MEVA Access/Engagement Initiatives

1. Encourage students to frequently check their school g-mails.
 2. Perform technology checks in multiple venues.
 3. Call team meetings with parents and teachers for struggling students at the earliest possible juncture.
 4. Maintain parent involvement by regularly following up.
-
- We have the BEST virtual teachers in the state at MEVA. Our task is to get students to access our instruction and engage in learning.
 - This is our basic strategy to encourage/ensure students' academic growth and college readiness, as measured by the NWEA and Accuplacer.

Panorama Survey Action Plan & ILPs

1. *Target School Fit: How well do the activities offered at your child's school match his/her interests?*

➤ **Action Plan (Families): Individual Learning Plans (ILPs).**

2. *Target Rigorous Expectations: How often do your teachers make you explain your answers?*

➤ **Action Plan (Students): Instructional Maps and Course Development.**

3. *Target Feedback and Coaching: How often do you receive feedback on your teaching? How much feedback do you receive on your teaching? How much do you learn from the teacher evaluation processes at your school?*

➤ **Action Plan (Teachers): Increase teacher/peer observations and feedback. Review teacher evaluation processes; seek faculty input.**

4. *Target Feedback and Coaching: How much feedback do you receive on your work? How much do you learn from the evaluation processes at your school?*

➤ **Action Plan (Staff): Increase staff observations and feedback. Review evaluation processes; seek faculty input.**

MCSC Recommendation from the SY-2021/2022 Annual Monitoring Report

ACADEMIC ACHIEVEMENT AND GROWTH

- Given the impact of the pandemic on academic growth, Maine Virtual Academy should develop clear and specific strategies for closing learning gaps to ensure students are prepared for rigorous academic work.

MCSC Growth Target – Middle School

- At least 60% of students in grades 7 & 8 will achieve their NWEA projected growth from fall to spring in math, reading, and language usage.
- Partially meeting is reaching 50 – 59%.
- Not meeting is below 50%.

New MEVA Custom Target - NWEA

- **Student Median Conditional Growth Percentile** on the MAP Student Growth Summary Report.
- Separate goals for each grade level (7, 8, 9, 10, & 11), a total of fifteen indicators/goals: The student median conditional growth percentile is the fiftieth (50th) or higher, as of the spring NWEA math, reading, and language usage, for each eligible grade level.