

Service To:
WOOLWICH BOARD OF EDUCATIO
OLDMANS CREEK RD
WOOLWICH, NJ 08085

11/25/19

Account Number
001008402 1082214
 SOUTHERN DIVISION
 1250300 PWSID # NJ0824001

Aqua New Jersey, Inc.
 762 W. Lancaster Avenue
 Bryn Mawr, PA 19010-3489

Toll Free: **877.987.2782**
 Fax: **866.780.8292**
 www.aquaamerica.com

Questions about your water/sewer service?... Contact us before the due date.

Bill Date **November 21, 2019** Total Amount Due **\$ 6,599.76** Current Charges Due Date **December 13, 2019**

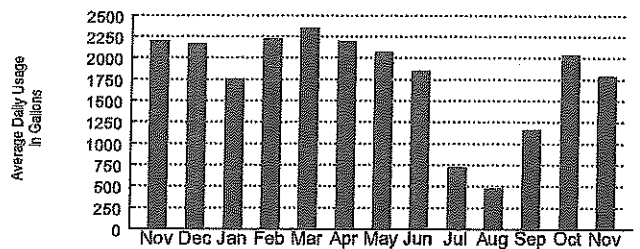
Meter Data

Meter	Size	Billing Period	Days	Read Type / Meter Readings	Usage	Units
80010158	8"	11/18/19 10/17/19	32	A 300000 A 7690000 A 300000 A 7633000	57,000	Gallons
Average Daily Usage = 1,781 Gallons		Total Days:	32	* A = Actual E = Estimated	Total Usage:	57,000 Gallons

Billing Detail

Amount Owed from Last Bill	\$ 6,638.48
Total Payments Received	6,638.48
Remaining Balance	0.00
Customer Charge Water	1,320.00
57,000 gallons @ \$0.006452 per gallon	367.76
Current Water Charges.....	1,687.76
Current Sewer Charges	4,912.00
Amount Due.....	\$ 6,599.76

Water Usage History



Read Types: Actual Estimated Customer



Service To:
WOOLWICH ELEM SCHOOL
15 FREDERICK BLVD-SCHOOL
WOOLWICH TOWNSHIP, NJ 08085

12/2/19

Account Number
001043048 0754328
 SOUTHERN DIVISION
 1250300 PWSID # NJ0824001

Aqua New Jersey, Inc.
 762 W. Lancaster Avenue
 Bryn Mawr, PA 19010-3489

Toll Free: **877.987.2782**
 Fax: **866.780.8292**
 www.aquaamerica.com

Questions about your water/sewer service?... Contact us before the due date.

Bill Date: **November 21, 2019** Total Amount Due: **\$ 2,179.77** Current Charges Due Date: **December 13, 2019**

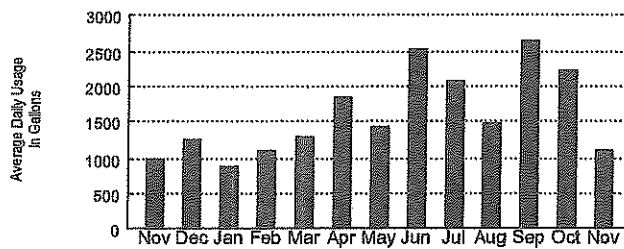
Meter Data

Meter	Size	Billing Period	Days	Read Type	Meter Readings	Usage	Units
70114043	4"	11/19/19	33	Actual	978000	36,000	Gallons
		10/17/19		Actual	942000		
Average Daily Usage = 1,090 Gallons		Total Days: 33		Total Usage:		36,000	Gallons

Billing Detail

Amount Owed from Last Bill	\$ 2,392.69
Total Payments Received	2,392.69
Remaining Balance	0.00
Customer Charge Water	412.50
36,000 gallons @ \$0.006452 per gallon.....	232.27
Current Water Charges.....	644.77
Current Sewer Charges.....	1,535.00
Amount Due.....	\$ 2,179.77

Water Usage History



Read Types: Actual Estimated Customer



An Exelon Company

03 00000008 200004251

Your electric bill - Nov 2019
for the period October 4, 2019 to November 5, 2019



WAYS TO SAVE: FIND TIPS AND PROGRAMS THAT HELP

Learn more at atlanticcityelectric.com/WaysToSave

SWEDESORO WOOLWICH BD OF ED

Account number: 5500 3462 334

Your service address: 601 AUBURN AVE
SWEDESORO NJ 08085

Bill issue date: Nov 6, 2019

How to contact us

Customer service (Mon-Fri, 7am - 7pm)

TTY English

TTY Spanish

Electric emergencies & outages (24 hours)

¿Problemas con la factura?

Visit atlanticcityelectric.com

1-800-642-3780

1-800-852-7897

1-866-658-7714

1-800-833-7476

1-800-642-3780

Summary of your charges

Balance from your last bill	\$28.26
Balance forward as of Nov 6, 2019	\$28.26
New electric charges	\$21.37
New ECPGNJ supply charges	\$10.40
Total amount due by Nov 27, 2019	\$60.03

A past due amount of \$28.26 remained on your account at the time your bill was prepared. If payment has been made, please disregard this notice. For bill payment options, visit www.atlanticcityelectric.com.

Find helpful storm preparation and power outage information at atlanticcityelectric.com

Si recibe un aviso de suspensión, puede solicitar una copia de ese aviso en español, llamando al departamento de atención al cliente, lunes a viernes de las 7 am a las 7 pm, a 800-642-3780.

1007266-0014287-0000001 of 0000004-C17-d1-4266-07273

SWEDSBORO WOOLWICH BD OF ED
Account number: 5500 3462 334

Your electric bill for the period
October 4, 2019 to November 5, 2019

Details of your Electric Charges

Monthly General Service Secondary - service number 0550 0346 2334 7000 4725 42
 Electricity you used this period

Meter Number	Current Reading	Previous Reading	Difference	Multiplier	Total Use
Energy Type 99F105301562	Nov 5 076882 (actual)	Oct 4 076749 (actual)	133	1	133
Use (kWh)					
Demand (kW)	0.340 (actual)			1	0.34

Load Factor: 49.39%

Your next meter reading is scheduled for December 4, 2019

Delivery Charges: These charges reflect the cost of bringing electricity to you.
 Current charges for 33 days, **winter rates in effect.**
 Capacity/Transmission Peak Load Contribution 0.34 / 0.36

Type of charge	How we calculate this charge	Amount(\$)
Customer Charge		10.96
Distribution Charge	0.30 kW X \$2.43333333 per kW	0.73
Distribution Charge	133 kWh X \$0.0512782 per kWh	6.82
Market Transition Tax	133 kWh X \$0.0010526 per kWh	0.14
Transition Bond Charge	133 kWh X \$0.0024060 per kWh	0.32
Non-Utility Generation Charge	133 kWh X \$0.0122556 per kWh	1.63
Societal Benefits Charge	133 kWh X \$0.0058647 per kWh	0.78
RGGI Energy Efficiency	133 kWh X \$0.0004511 per kWh	0.06
EDIT Credit 5 Yr - kWh	133 kWh X \$0.0048120- per kWh	0.64-
Zero Emission Certif (ZEC) Charge	133 kWh X \$0.0042857 per kWh	0.57
Total Electric Delivery Charges		21.37

Electric Summary	
Balance from your last bill	\$19.27
Electric Charges (Monthly General Service Secondary)	\$21.37
New electric charges	\$21.37
Total amount due by Nov 27, 2019	\$40.64

SWEDESBORO WOOLWICH BD OF ED

Account number: 5500 3462 334

Your electric bill for the period
October 4, 2019 to November 5, 2019

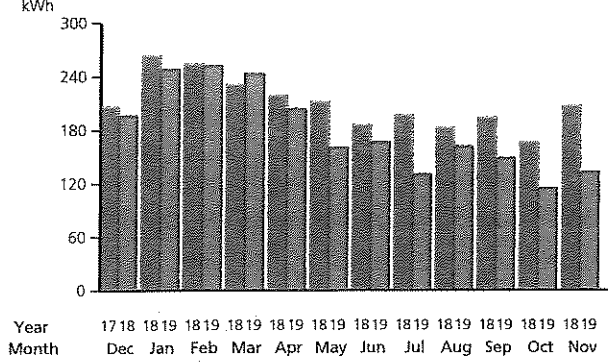


Supply Charges: These charges reflect the cost of producing electricity for you. You can compare this part of your bill to offers from competitive suppliers. The class average annual price to compare is 9.18 cents per kWh.

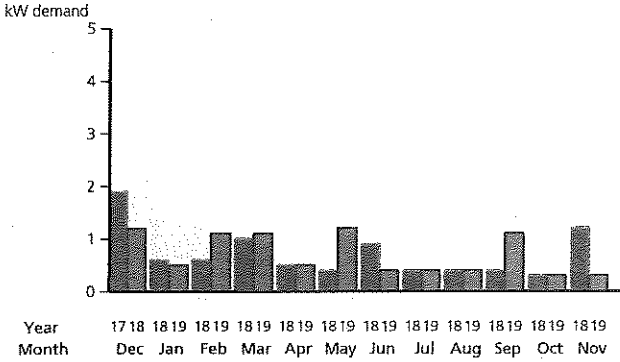
Total Electric Charges - Monthly General Service Secondary 21.37

Your monthly Electricity use in kWh

Daily temperature averages: Nov 2018: 59° F Nov 2019: 58° F



Your monthly Electricity use in kW demand



ECPGNJ electric supply charges

Service number 0550 0346 2334 7000 4725 42

Your electricity is supplied by East Coast Power & Gas NJ, LLC. If you have any questions about your electric supply charges, call East Coast Power & Gas NJ, LLC at 1-800-545-9155.

East Coast Power & Gas NJ, LLC account number: 0550034623347000472542

Billing period: Oct 4, 2019 to Nov 5, 2019 (33 days)

Type of service: Monthly General Service Secondary

THANK YOU FOR USING EAST COAST POWER GAS

ENERGY CHARGE 133KH@0.078200

\$0.00

\$10.40

Amount(\$)

10.40

ECPGNJ electric charges

ECPGNJ Electric Supply Summary	
Balance from your last bill	\$8.99
Total Current Charges	\$10.40
New ECPGNJ electric supply charges	\$10.40
Total amount due by Nov 27, 2019	\$19.39

1007266-0014288-0000003 of 0000004-C17-d1-4266-07273



An Exelon Company

16 00000008 200005391



Your electric bill - Nov 2019
for the period **October 24, 2019 to November 20, 2019**

WAYS TO SAVE: FIND TIPS AND PROGRAMS THAT HELP

Learn more at atlanticcityelectric.com/WaysToSave

BD OF ED SWEDESBORO WOOLWICH

Account number: **5500 8379 814**

Your service address: 15 FREDRICK BLVD
SWEDESBORO NJ 08085

Bill issue date: Nov 22, 2019

Summary of your charges

Balance from your last bill	\$921.71
Your payment(s) - thank you	\$921.71
Balance forward as of Nov 22, 2019	\$0.00
New electric charges	\$717.74
New Plymouth Rock supply charges	\$158.68
Total amount due by Dec 13, 2019	\$876.42

Find helpful storm preparation and power outage information at atlanticcityelectric.com

Si recibe un aviso de suspensión, puede solicitar una copia de ese aviso en español, llamando al departamento de atención al cliente, lunes a viernes de las 7 am a las 7 pm, a 800-642-3780.

How to contact us

Customer service (Mon-Fri, 7am - 7pm)

TTY English

TTY Spanish

Electric emergencies & outages (24 hours)

¿Problemas con la factura?

Visit atlanticcityelectric.com

1-800-642-3780
1-800-852-7897
1-866-658-7714
1-800-833-7476
1-800-642-3780

BD OF ED SWEDSBORO WOOLWICH
Account number: 5500 8379 814

Your electric bill for the period
October 24, 2019 to November 20, 2019

1007202-0014016-0000002 of 0000004-C17-d1-4280-07209

Details of your Electric Charges

Street and Private Lighting - service number 0550 0837 9814 7001 8302 94
 Electricity you used this period

Lamp size	Quantity	Total use
400S UB	6	1023
400S UB2	7	2388
Total	13	3,411

Delivery Charges: These charges reflect the cost of bringing electricity to you.
 Current charges for 28 days, **winter rates in effect.**

Type of charge	How we calculate this charge	Amount(\$)
Distribution Charge	6 X \$34.7950000	208.77
Distribution Charge	7 X \$69.5900000	487.13
Market Transition Tax	3411 kWh X \$0.0010290 per kWh	3.51
Transition Bond Charge	3411 kWh X \$0.0024011 per kWh	8.19
Non-Utility Generation Charge	3411 kWh X \$0.0122545 per kWh	41.80
Societal Benefits Charge	3411 kWh X \$0.0058341 per kWh	19.90
RGGI Energy Efficiency	3411 kWh X \$0.0004163 per kWh	1.42
EDIT Credit 5 Yr - kWh	3411 kWh X \$0.0197977 - per kWh	67.53--
Zero Emission Certif (ZEC) Charge	3411 kWh X \$0.0042656 per kWh	14.55
Total Electric Delivery Charges		717.74

Supply Charges: These charges reflect the cost of producing electricity for you.
 You can compare this part of your bill to offers from competitive suppliers. The class average annual price to compare is 5.38 cents per kWh.

Total Electric Charges - Street and Private Lighting 717.74

Plymouth Rock electric supply charges

Service number 0550 0837 9814 7001 8302 94
 Your electricity is supplied by Plymouth Rock Energy, LLC. If you have any questions about your electric supply charges, call Plymouth Rock Energy, LLC at 1-855-327-6937.

Electric Summary	
Balance from your last bill	\$766.01
Payment Nov 19	\$766.01--
Total Payments	\$766.01--
Electric Charges (Street and Private Lighting)	\$717.74
New electric charges	\$717.74
Total amount due by Dec 13, 2019	\$717.74

Plymouth Rock Electric Supply Summary	
Balance from your last bill	\$155.70
Payment Nov 19	\$155.70--
Total Payments	\$155.70--

BD OF ED SWEDESBORO WOOLWICH
Account number: 5500 8379 814

Your electric bill for the period
October 24, 2019 to November 20, 2019



Plymouth Rock Energy, LLC account number: 0550083798147001830294
Billing period: Oct 24, 2019 to Nov 20, 2019 (28 days)
Type of service: Street and Private Lighting
Customer Charges: 158.68

Plymouth Rock electric charges

\$158.68
Amount(\$)
158.68

Electric Summary Continued	
Total Current Charges	\$158.68
New Plymouth Rock electric supply charges	\$158.68
Total amount due by Dec 13, 2019	\$158.68



An Exelon Company

Your electric bill - Nov 2019
for the period October 25, 2019 to November 21, 2019



WAYS TO SAVE: FIND TIPS AND PROGRAMS THAT HELP

Learn more at atlanticcityelectric.com/WaysToSave

BD OF ED SWEDESORO WOOLWICH

Account number: 5500 8381 398

Your service address: KINGSHWY

SWEDESORO NJ 08085

Bill issue date: Nov 25, 2019

Summary of your charges

Balance from your last bill	\$183.05
Your payment(s) - thank you	\$183.05--
Balance forward as of Nov 25, 2019	\$0.00
New electric charges	\$145.60
New Plymouth Rock supply charges	\$28.10
Total amount due by Dec 16, 2019	\$173.70

Find helpful storm preparation and power outage information at atlanticcityelectric.com

Si recibe un aviso de suspensión, puede solicitar una copia de ese aviso en español, llamando al departamento de atención al cliente, lunes a viernes de las 7 am a las 7 pm, a 800-642-3780.

How to contact us

Customer service (Mon-Fri, 7am - 7pm)

TTY English

TTY Spanish

Electric emergencies & outages (24 hours)

¿Problemas con la factura?

Visit atlanticcityelectric.com

1-800-642-3780

1-800-852-7897

1-866-658-7714

1-800-833-7476

1-800-642-3780

BD OF ED SWEDESORO WOOLWICH
 Account number: 5500 8381 398

Your electric bill for the period
October 25, 2019 to November 21, 2019

1008170-0015994-0000002 of 0000004-C17-d1-4282-08178

Details of your Electric Charges

Street and Private Lighting - service number 0550 0838 1398 7000 2759 65
 Electricity you used this period

Lamp size	Quantity	Total use
250S FH	1	110
100W SDS	1	87
150W S	3	188
250W S	2	219
Total	7	604

Delivery Charges: These charges reflect the cost of bringing electricity to you.
 Current charges for 28 days, **winter rates in effect.**

Type of charge	How we calculate this charge	Amount(\$)
Distribution Charge	1 X \$18.86000000	18.86
Distribution Charge	1 X \$28.90000000	28.90
Distribution Charge	3 X \$15.98000000	47.94
Distribution Charge	2 X \$23.01500000	46.03
Market Transition Tax	604 kWh X \$0.0010265 per kWh	0.62
Transition Bond Charge	604 kWh X \$0.0024007 per kWh	1.45
Non-Utility Generation Charge	604 kWh X \$0.0122517 per kWh	7.40
Societal Benefits Charge	604 kWh X \$0.0058444 per kWh	3.53
RGGI Energy Efficiency	604 kWh X \$0.0004139 per kWh	0.25
EDIT Credit 5 Yr - kWh	604 kWh X \$0.0198013- per kWh	11.96-
Zero Emission Certif (ZEC) Charge	604 kWh X \$0.0042715 per kWh	2.58
Total Electric Delivery Charges		145.60

Supply Charges: These charges reflect the cost of producing electricity for you.
 You can compare this part of your bill to offers from competitive suppliers. The class average annual price to compare is 5.38 cents per kWh.

Total Electric Charges - Street and Private Lighting 145.60

Electric Summary	
Balance from your last bill	\$155.47
Payment Nov 19	\$155.47-
Total Payments	\$155.47-
Electric Charges (Street and Private Lighting)	\$145.60
New electric charges	\$145.60
Total amount due by Dec 16, 2019	\$145.60

BD OF ED SWEDESBORO WOOLWICH
Account number: 5500 8381 398

Your electric bill for the period
October 25, 2019 to November 21, 2019



Plymouth Rock electric supply charges

Service number 0550 0838 1398 7000 2759 65

Your electricity is supplied by Plymouth Rock Energy, LLC. If you have any questions about your electric supply charges, call Plymouth Rock Energy, LLC at 1-855-327-6937.

Plymouth Rock Energy, LLC account number: 0550083813987000275965

Billing period: Oct 25, 2019 to Nov 21, 2019 (28 days)

Type of service: Street and Private Lighting

Customer Charges:28.10

\$28.10
Amount(\$)
28.10

Plymouth Rock electric charges

**Plymouth Rock Electric
Supply Summary**

Balance from your last bill	\$27.58
Payment Nov 19	\$27.58-
Total Payments	\$27.58-
Total Current Charges	\$28.10
New Plymouth Rock electric supply charges	\$28.10
Total amount due by Dec 16, 2019	\$28.10



An Exelon Company

Your electric bill - Nov 2019
for the period **October 26, 2019 to November 22, 2019**

WAYS TO SAVE: FIND TIPS AND PROGRAMS THAT HELP

Learn more at atlanticcityelectric.com/WaysToSave

SWEDESBORO WOOLWICH BD OF ED

Account number: 5500 3441 890

Your service address: 2ND ST

SWEDESBORO NJ 08085

Bill issue date: Nov 26, 2019

Summary of your charges

Balance from your last bill	\$419.16
Your payment(s) - thank you	\$419.16-
Balance forward as of Nov 26, 2019	\$0.00
New electric charges	\$326.54
New Plymouth Rock supply charges	\$71.82
Total amount due by Dec 17, 2019	\$398.36

Find helpful storm preparation and power outage information at atlanticcityelectric.com

Si recibe un aviso de suspensión, puede solicitar una copia de ese aviso en español, llamando al departamento de atención al cliente, lunes a viernes de las 7 am a las 7 pm, a 800-642-3780.

How to contact us

Customer service (Mon-Fri, 7am - 7pm)

TTY English

TTY Spanish

Electric emergencies & outages (24 hours)

¿Problemas con la factura?

Visit atlanticcityelectric.com

- 1-800-642-3780
- 1-800-852-7897
- 1-866-658-7714
- 1-800-833-7476
- 1-800-642-3780

SWEDESORO WOOLWICH BD OF ED
Account number: 5500 3441 890

Your electric bill for the period
October 26, 2019 to November 22, 2019

1009931-0019478-0000002 of 0000004-C17-d1-4283-09940

Details of your Electric Charges

Street and Private Lighting - service number 0550 0344 1890 7000 7265 41
 Electricity you used this period

Lamp size	Quantity	Total use
400S FM	2	343
400S UFM	5	858
400S UFM2	1	343
Total	8	1,544

Delivery Charges: These charges reflect the cost of bringing electricity to you.
 Current charges for 28 days, **winter rates in effect.**

Type of charge	How we calculate this charge	Amount(\$)
Distribution Charge	2 X \$29.68000000	59.36
Distribution Charge	5 X \$36.75400000	183.77
Distribution Charge	1 X \$73.51000000	73.51
Market Transition Tax	1544 kWh X \$0.0010298 per kWh	1.59
Transition Bond Charge	1544 kWh X \$0.0024029 per kWh	3.71
Non-Utility Generation Charge	1544 kWh X \$0.0122539 per kWh	18.92
Societal Benefits Charge	1544 kWh X \$0.0058420 per kWh	9.02
RGGI Energy Efficiency	1544 kWh X \$0.0004145 per kWh	0.64
EDIT Credit 5 Yr - kWh	1544 kWh X \$0.0197992- per kWh	30.57-
Zero Emission Certif (ZEC) Charge	1544 kWh X \$0.0042681 per kWh	6.59
Total Electric Delivery Charges		326.54

Supply Charges: These charges reflect the cost of producing electricity for you.
 You can compare this part of your bill to offers from competitive suppliers. The class average annual price to compare is 5.38 cents per kWh.

Total Electric Charges - Street and Private Lighting 326.54

Plymouth Rock electric supply charges
 Service number 0550 0344 1890 7000 7265 41

Electric Summary	
Balance from your last bill	\$348.64
Payment Nov 19	\$348.64-
Total Payments	\$348.64-
Electric Charges (Street and Private Lighting)	\$326.54
New electric charges	\$326.54
Total amount due by Dec 17, 2019	\$326.54

Plymouth Rock Electric Supply Summary	
Balance from your last bill	\$70.52

SWEDESBORO WOOLWICH BD OF ED
Account number: 5500 3441 890

Your electric bill for the period
October 26, 2019 to November 22, 2019



Your electricity is supplied by Plymouth Rock Energy, LLC. If you have any questions about your electric supply charges, call Plymouth Rock Energy, LLC at 1-855-327-6937.

Plymouth Rock Energy, LLC account number: 0550034418907000726541

Billing period: Oct 26, 2019 to Nov 22, 2019 (28 days)

Type of service: Street and Private Lighting

Customer Charges:71.82

Plymouth Rock electric charges

\$71.82
Amount(\$)
71.82

Electric Summary Continued	
Payment Nov 19	\$70.52-
Total Payments	\$70.52-
Total Current Charges	\$71.82
New Plymouth Rock electric supply charges	\$71.82
Total amount due by Dec 17, 2019	\$71.82



An Exelon Company

21 00300008 200010698

11/10/19



Your electric bill - Nov 2019
for the period October 31, 2019 to November 26, 2019

WAYS TO SAVE: FIND TIPS AND PROGRAMS THAT HELP

Learn more at atlanticcityelectric.com/WaysToSave

SWEDESBORO WOOLWICH BD OF ED

Account number: 5500 3440 991

Your service address: PEDRICKTOWN & AUBURN
SWEDESBORO NJ 08085

Bill Issue date: Dec 3, 2019

How to contact us

Customer service (Mon-Fri, 7am - 7pm)

TTY English

TTY Spanish

Electric emergencies & outages (24 hours)

¿Problemas con la factura?

Visit atlanticcityelectric.com

1-800-642-3780
1-800-852-7897
1-866-658-7714
1-800-833-7476
1-800-642-3780

Summary of your charges

Balance from your last bill	\$16,563.76
Your payment(s) - thank you	\$16,563.76
Balance forward as of Dec 3, 2019	\$0.00
New electric charges	\$5,410.02
New ECPGNJ supply charges	\$3,812.25
Total amount due by Dec 26, 2019	\$9,222.27

Find helpful storm preparation and power outage information at atlanticcityelectric.com

Si recibe un aviso de suspensión, puede solicitar una copia de ese aviso en español, llamando al departamento de atención al cliente, lunes a viernes de las 7 am a las 7 pm, a 800-642-3780.

1007479-0014693-0000001 of 0000004-C17-d1-4289-07486

SWEDSBORO WOOLWICH BD OF ED
Account number: 5500 3440 991

Your electric bill for the period
October 31, 2019 to November 26, 2019

Details of your Electric Charges

Annual General Service Secondary - service number 0550 0344 0991 7001 1457 52
 Electricity you used this period

Meter Number <u>Energy Type</u>	Current <u>Reading</u>	Previous <u>Reading</u>	<u>Multiplier</u>	Total <u>Use</u>	Total for <u>Billing</u>
KZA014232044 Use (kWh)	Nov 26 009641 (actual)	Oct 31 009479 (actual)	300	48600	48750
Demand (kW)	1.334 (actual)		300	400.20	400.32
Demand (kVAR)	0.705 (actual)		300	211.50	211.50

Minimum kW demand 404.21
 Total kW Billing demand 404.21

Load Factor: 18.79% Power Factor: 88.41%

The "Total for Billing" column represents data from interval pulses, which is utilized for billing purposes.

Your next meter reading is scheduled for December 31, 2019

Delivery Charges: These charges reflect the cost of bringing electricity to you.
 Current charges for 27 days, winter rates in effect.
 Capacity/Transmission Peak Load Contribution 216.72 / 253.37

Type of charge	How we calculate this charge	Amount(\$)
Customer Charge		173.90
Distribution Charge	404.21 kW X \$9.9809999 per kW	4,034.40
Reactive Demand Charge		60.42
Market Transition Tax	48750 kWh X \$0.0010281 per kWh	50.12
Transition Bond Charge	48750 kWh X \$0.0024000 per kWh	117.00
Non-Utility Generation Charge	48750 kWh X \$0.0122540 per kWh	597.38
Societal Benefits Charge	48750 kWh X \$0.0058322 per kWh	284.32
RGGI Energy Efficiency	48750 kWh X \$0.0004170 per kWh	20.33

Electric Summary	
Balance from your last bill	\$9,018.09
Payment Nov 19	\$9,018.09-
Total Payments	\$9,018.09-
Electric Charges (Annual General Service Secondary)	\$5,410.02
New electric charges	\$5,410.02
Total amount due by Dec 26, 2019	\$5,410.02

SWEDESBORO WOOLWICH BD OF ED

Account number: 5500 3440 991

Your electric bill for the period
October 31, 2019 to November 26, 2019



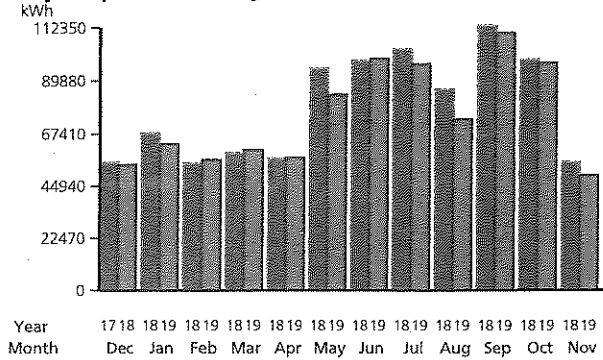
EDIT Credit 5 Yr - kWh	48750 kWh X \$0.0027850- per kWh	135.77-
Zero Emission Certif (ZEC) Charge	48750 kWh X \$0.0042650 per kWh	207.92
Total Electric Delivery Charges		5,410.02

Supply Charges: These charges reflect the cost of producing electricity for you. You can compare this part of your bill to offers from competitive suppliers. The class average annual price to compare is 8.35 cents per kWh.

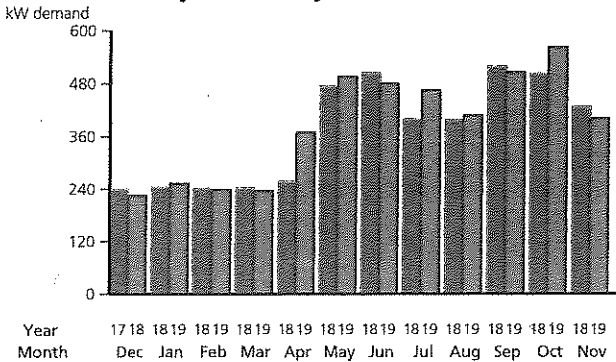
Total Electric Charges - Annual General Service Secondary **5,410.02**

Your monthly Electricity use in kWh

Daily temperature averages: Nov 2018: 47° F Nov 2019: 45° F



Your monthly Electricity use in kW demand



ECPGNJ electric supply charges

Service number 0550 0344 0991 7001 1457 52

Your electricity is supplied by East Coast Power & Gas NJ, LLC. If you have any questions about your electric supply charges, call East Coast Power & Gas NJ, LLC at 1-800-545-9155.

East Coast Power & Gas NJ, LLC account number: 0550034409917001145752

Billing period: Oct 31, 2019 to Nov 26, 2019 (27 days)

Type of service: Annual General Service Secondary

THANK YOU FOR USING EAST COAST POWER GAS

ENERGY CHARGE 48750KH@0.078200

\$0.00
\$3,812.25
Amount(\$)
3,812.25

ECPGNJ electric charges

ECPGNJ Electric Supply Summary

Balance from your last bill	\$7,545.67
Payment Nov 19	\$7,545.67-
Total Payments	\$7,545.67-
Total Current Charges	\$3,812.25
New ECPGNJ electric supply charges	\$3,812.25
Total amount due by Dec 26, 2019	\$3,812.25

1007479-0014694-0000003 of 0000004-C17-d1-4289-07486



An Exelon Company

Your electric bill - Nov 2019
for the period **October 31, 2019 to November 26, 2019**

WAYS TO SAVE: FIND TIPS AND PROGRAMS THAT HELP

Learn more at atlanticcityelectric.com/WaysToSave

SWEDESBORO WOOLWICH BD OF ED

Account number: 5500 3441 635
Your service address: 15 FREDRICK BLVD
SWEDESBORO NJ 08085
Bill issue date: Dec 3, 2019

Summary of your charges

Balance from your last bill	\$8,843.81
Your payment(s) - thank you	\$8,843.81
Balance forward as of Dec 3, 2019	\$0.00
New electric charges	\$3,445.33
New ECPGNJ supply charges	\$2,978.95
Total amount due by Dec 26, 2019	\$6,424.28

Find helpful storm preparation and power outage information at atlanticcityelectric.com

Si recibe un aviso de suspensión, puede solicitar una copia de ese aviso en español, llamando al departamento de atención al cliente, lunes a viernes de las 7 am a las 7 pm, a 800-642-3780.

How to contact us
Customer service (Mon-Fri, 7am - 7pm)
TTY English
TTY Spanish
Electric emergencies & outages (24 hours)
¿Problemas con la factura?
Visit atlanticcityelectric.com

1-800-642-3780
1-800-852-7897
1-866-658-7714
1-800-833-7476
1-800-642-3780

SWEDSBORO WOOLWICH BD OF ED

Account number: 5500 3441 635

Your electric bill for the period

October 31, 2019 to November 26, 2019

Details of your Electric Charges

Annual General Service Secondary - service number 0550 0344 1635 7001 2672 52
Electricity you used this period

Meter Number	Current Reading	Previous Reading	Multiplier	Total Use	Total for Billing
Energy Type KZA019605861	Nov 26 006811 (actual)	Oct 31 006620 (actual)	200	38200	38094
Use (kWh)					
Demand (kW)	1.178 (actual)		200	235.60	235.56
Demand (kVAR)	0.577 (actual)		200	115.40	115.32

Minimum kW demand 228.00
Total kW Billing demand 235.56
Load Factor: 24.96% Power Factor: 89.81%

The "Total for Billing" column represents data from interval pulses, which is utilized for billing purposes.

Your next meter reading is scheduled for December 31, 2019

Delivery Charges: These charges reflect the cost of bringing electricity to you.
Current charges for 27 days, winter rates in effect.
Capacity/Transmission Peak Load Contribution 149.65 / 123.80

Type of charge	How we calculate this charge	Amount(\$)
Customer Charge		173.90
Distribution Charge	235.56 kW X \$9.9809815 per kW	2,351.12
Reactive Demand Charge		28.48
Market Transition Tax	38094 kWh X \$0.0010280 per kWh	39.16
Transition Bond Charge	38094 kWh X \$0.0024001 per kWh	91.43
Non-Utility Generation Charge	38094 kWh X \$0.0122539 per kWh	466.80
Societal Benefits Charge	38094 kWh X \$0.0058322 per kWh	222.17
RGGI Energy Efficiency	38094 kWh X \$0.0004171 per kWh	15.89

Electric Summary	
Balance from your last bill	\$4,651.35
Payment Nov 19	\$4,651.35--
Total Payments	\$4,651.35--
Electric Charges (Annual General Service Secondary)	\$3,445.33
New electric charges	\$3,445.33
Total amount due by Dec 26, 2019	\$3,445.33

SWEDESBORO WOOLWICH BD OF ED

Account number: 5500 3441 635

Your electric bill for the period
October 31, 2019 to November 26, 2019



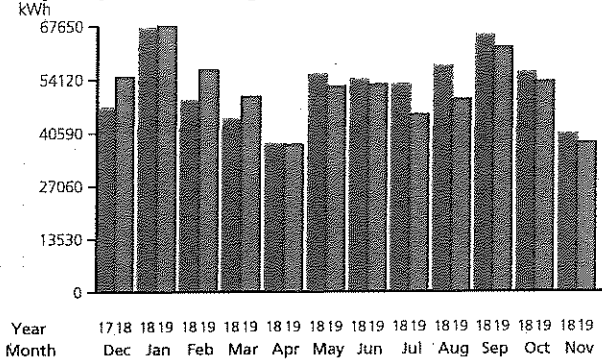
EDIT Credit 5 Yr - kWh	38094 kWh X \$0.0027850- per kWh	106.09-
Zero Emission Certif (ZEC) Charge	38094 kWh X \$0.0042650 per kWh	162.47
Total Electric Delivery Charges		3,445.33

Supply Charges: These charges reflect the cost of producing electricity for you. You can compare this part of your bill to offers from competitive suppliers. The class average annual price to compare is 8.35 cents per kWh.

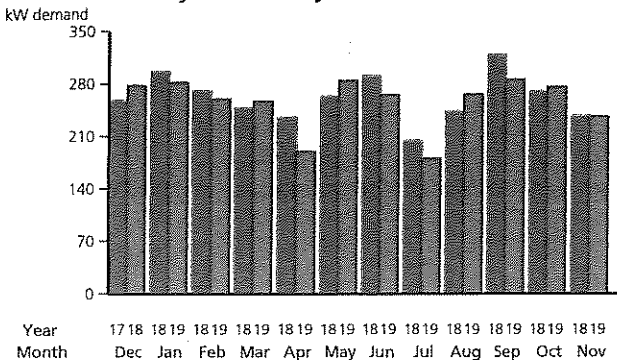
Total Electric Charges - Annual General Service Secondary 3,445.33

Your monthly Electricity use in kWh

Daily temperature averages: Nov 2018: 47° F Nov 2019: 45° F



Your monthly Electricity use in kW demand



ECPGNJ electric supply charges

Service number 0550 0344 1635 7001 2672 52

Your electricity is supplied by East Coast Power & Gas NJ, LLC. If you have any questions about your electric supply charges, call East Coast Power & Gas NJ, LLC at 1-800-545-9155.

East Coast Power & Gas NJ, LLC account number: 0550034416357001267252

Billing period: Oct 31, 2019 to Nov 26, 2019 (27 days)

Type of service: Annual General Service Secondary

THANK YOU FOR USING EAST COAST POWER GAS

ENERGY CHARGE 38094KH@0.078200

\$0.00
\$2,978.95
Amount(\$)
2,978.95

ECPGNJ electric charges

ECPGNJ Electric Supply Summary

Balance from your last bill		\$4,192.46
Payment Nov 19		\$4,192.46-
Total Payments		\$4,192.46-
Total Current Charges		\$2,978.95
New ECPGNJ electric supply charges		\$2,978.95
Total amount due by Dec 26, 2019		\$2,978.95

1007478-0014692-0000003 of 0000004-C17-d1-4289-07485

11/2/19



An Exelon Company

Your electric bill - Nov 2019

for the period **October 11, 2019 to November 7, 2019**



WAYS TO SAVE: FIND TIPS AND PROGRAMS THAT HELP

Learn more at atlanticcityelectric.com/WaysToSave

SWEDESBORO WOOLWICH BD OF ED

Account number: 5500 3441 205
Your service address: 15 FREDRICK BLVD
SWEDESBORO NJ 08085
Bill Issue date: Nov 8, 2019

Summary of your charges

Balance from your last bill	\$20.92
Your payment(s) - thank you	\$10.96--
Balance forward as of Nov 8, 2019	\$9.96
New electric charges	\$9.30
New ECPGNJ supply charges	\$0.00
Total amount due by Dec 2, 2019	\$19.26

A past due amount of \$9.96 remained on your account at the time your bill was prepared. If payment has been made, please disregard this notice. For bill payment options, visit www.atlanticcityelectric.com.

Find helpful storm preparation and power outage information at atlanticcityelectric.com

Si recibe un aviso de suspensión, puede solicitar una copia de ese aviso en español, llamando al departamento de atención al cliente, lunes a viernes de las 7 am a las 7 pm, a 800-642-3780.

How to contact us

Customer service (Mon-Fri, 7am - 7pm)

TTY English

TTY Spanish

Electric emergencies & outages (24 hours)

¿Problemas con la factura?

Visit atlanticcityelectric.com

1-800-642-3780
1-800-852-7897
1-866-658-7714
1-800-833-7476
1-800-642-3780

SWEDSBORO WOOLWICH BD OF ED

Account number: 5500 3441 205

Your electric bill for the period
October 11, 2019 to November 7, 2019

Details of your Electric Charges

Monthly General Service Secondary - service number 0550 0344 1205 7001 4298 10
 Electricity you used this period

Meter Number	Current Reading	Previous Reading	Difference	Multiplier	Total Use
99F105731107	Nov 7 024486 (actual)	Oct 11 024486 (actual)	0	1	0
Demand (kW)	0.000 (actual)			1	0.00

Your next meter reading is scheduled for December 7, 2019

Delivery Charges: These charges reflect the cost of bringing electricity to you.
 Current charges for 28 days, **winter rates in effect.**
 Capacity/Transmission Peak Load Contribution 0.00 / 0.00

Type of charge	How we calculate this charge	Amount(\$)
Customer Charge		9.30
Total Electric Delivery Charges		9.30

Supply Charges: These charges reflect the cost of producing electricity for you.
 You can compare this part of your bill to offers from competitive suppliers. The class average annual price to compare is 9.18 cents per kWh.

Total Electric Charges - Monthly General Service Secondary	9.30
---	-------------

Electric Summary	
Balance from your last bill	\$20.92
Payment Oct 15	\$10.96--
Total Payments	\$10.96--
Electric Charges (Monthly General Service Secondary)	\$9.30
New electric charges	\$9.30
Total amount due by Dec 2, 2019	\$19.26

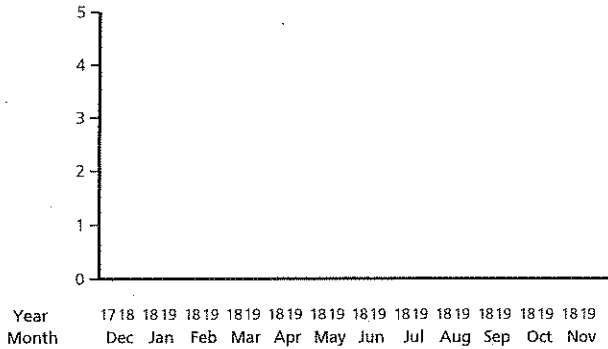
SWEDESBORO WOOLWICH BD OF ED
Account number: 5500 3441 205

Your electric bill for the period
October 11, 2019 to November 7, 2019

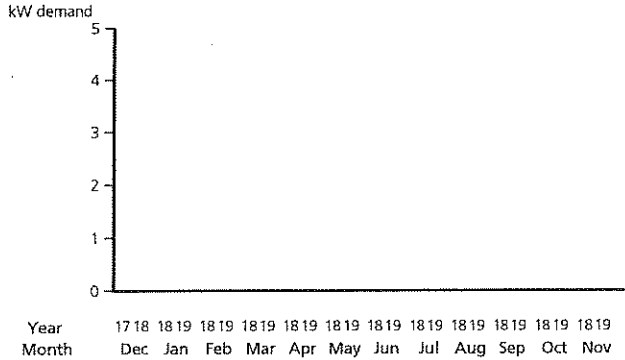


Your monthly Electricity use in kWh

Daily temperature averages: Nov 2018: 57° F Nov 2019: 56° F



Your monthly Electricity use in kW demand



ECPGNJ electric supply charges

Service number 0550 0344 1205 7001 4298 10

Your electricity is supplied by East Coast Power & Gas NJ, LLC. If you have any questions about your electric supply charges, call East Coast Power & Gas NJ, LLC at 1-800-545-9155.

East Coast Power & Gas NJ, LLC account number: 0550034412057001429810

Billing period: Oct 11, 2019 to Nov 7, 2019 (28 days)

Type of service: Monthly General Service Secondary

ENERGY CHARGE OKH@0.078200

ECPGNJ electric charges

\$0.00
Amount(\$)
0.00

ECPGNJ Electric Supply Summary	
Balance from your last bill	\$0.00
New ECPGNJ electric supply charges	\$0.00
Total amount due by Dec 2, 2019	\$0.00

1007864-0015476-0000003 of 0000004-C17-41-4298-07871



An Exelon Company

Your electric bill - Nov 2019
for the period **October 9, 2019 to November 6, 2019**



WAYS TO SAVE: FIND TIPS AND PROGRAMS THAT HELP

Learn more at atlanticcityelectric.com/WaysToSave

BD OF ED SWEDESBORO WOOLWICH

Account number: **5500 8380 069**
Your service address: **KINGS HWY
SWEDESBORO NJ 08085**
Bill Issue date: **Nov 8, 2019**

Summary of your charges

Balance from your last bill	\$14,941.26
Your payment(s) - thank you	\$6,671.85-
Balance forward as of Nov 8, 2019	\$8,269.41
New electric charges	\$2,967.30
New ECPGNJ supply charges	\$2,815.20
Total amount due by Dec 2, 2019	\$14,051.91

A past due amount of \$8,269.41 remained on your account at the time your bill was prepared. If payment has been made, please disregard this notice. For bill payment options, visit www.atlanticcityelectric.com.

Find helpful storm preparation and power outage information at atlanticcityelectric.com

Si recibe un aviso de suspensión, puede solicitar una copia de ese aviso en español, llamando al departamento de atención al cliente, lunes a viernes de las 7 am a las 7 pm, a 800-642-3780.

How to contact us
 Customer service (Mon-Fri, 7am - 7pm)
 TTY English **1-800-642-3780**
 TTY Spanish **1-800-852-7897**
 Electric emergencies & outages (24 hours)
 ¿Problemas con la factura? **1-866-658-7714**
1-800-833-7476
1-800-642-3780

Visit atlanticcityelectric.com

BD OF ED SWEDSBORO WOOLWICH

Account number: 5500 8380 069

Your electric bill for the period
October 9, 2019 to November 6, 2019

Details of your Electric Charges

Annual General Service Secondary - service number 0550 0838 0069 7001 8863 42
 Electricity you used this period

Meter Number	Current Reading	Previous Reading	Difference	Multiplier	Total Use
99A084534406	Nov 6 031275 (actual)	Oct 9 030825 (actual)	450	80	36000
Demand (kW)	2.020 (actual)			80	161.60
Demand (kVAR)	1.130 (actual)			80	90.40

Minimum kW demand 177.92
 Total kW Billing demand 177.92
 Load Factor: 32.01% Power Factor: 87.27%

Your next meter reading is scheduled for December 6, 2019

Delivery Charges: These charges reflect the cost of bringing electricity to you.
 Current charges for 29 days, winter rates in effect.
 Capacity/Transmission Peak Load Contribution 128.67 / 136.69

Type of charge	How we calculate this charge	Amount(\$)
Customer Charge		186.78
Distribution Charge	177.92 kW X \$10.7203237 per kW	1,907.36
Reactive Demand Charge		30.37
Market Transition Tax	36000 kWh X \$0.0010281 per kWh	37.01
Transition Bond Charge	36000 kWh X \$0.0024000 per kWh	86.40
Non-Utility Generation Charge	36000 kWh X \$0.0122539 per kWh	441.14
Societal Benefits Charge	36000 kWh X \$0.0058319 per kWh	209.95
RGGI Energy Efficiency	36000 kWh X \$0.0004169 per kWh	15.01
EDIT Credit 5 Yr - kWh	36000 kWh X \$0.0027850- per kWh	100.26-

Electric Summary	
Balance from your last bill	\$7,621.74
Payment Oct 15	\$3,568.87-
Total Payments	\$3,568.87-
Electric Charges (Annual General Service Secondary)	\$2,967.30
New electric charges	\$2,967.30
Total amount due by Dec 2, 2019	\$7,020.17

BD OF ED SWEDESBORO WOOLWICH

Account number: 5500 8380 069

Your electric bill for the period

October 9, 2019 to November 6, 2019



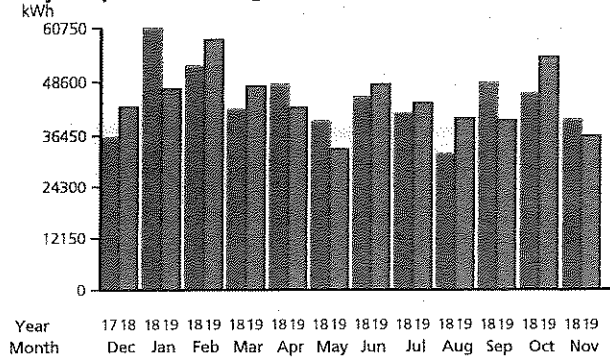
Zero Emission Certif (ZEC)
 Charge 36000 kWh X \$0.0042650 per kWh 153.54
Total Electric Delivery Charges 2,967.30

Supply Charges: These charges reflect the cost of producing electricity for you. You can compare this part of your bill to offers from competitive suppliers. The class average annual price to compare is 8.35 cents per kWh.

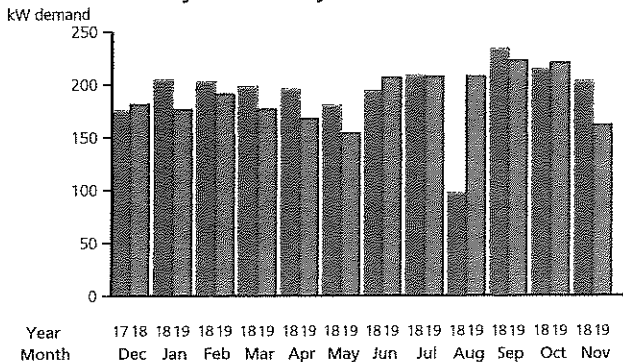
Total Electric Charges - Annual General Service Secondary 2,967.30

Your monthly Electricity use in kWh

Daily temperature averages: Nov 2018: 58° F Nov 2019: 57° F



Your monthly Electricity use in kW demand



ECPGNJ electric supply charges

Service number 0550 0838 0069 7001 8863 42

Your electricity is supplied by East Coast Power & Gas NJ, LLC. If you have any questions about your electric supply charges, call East Coast Power & Gas NJ, LLC at 1-800-545-9155.

East Coast Power & Gas NJ, LLC account number: 0550083800697001886342

Billing period: Oct 9, 2019 to Nov 6, 2019 (29 days)

Type of service: Annual General Service Secondary

THANK YOU FOR USING EAST COAST POWER GAS

ENERGY CHARGE 36000KH@0.078200

\$0.00
 \$2,815.20
Amount(\$)
2,815.20

ECPGNJ electric charges

ECPGNJ Electric Supply Summary	
Balance from your last bill	\$7,319.52
Payment Oct 15	\$3,102.98-
Total Payments	\$3,102.98-
Total Current Charges	\$2,815.20
New ECPGNJ electric supply charges	\$2,815.20
Total amount due by Dec 2, 2019	\$7,031.74



An Exelon Company

Your electric bill - Nov 2019
for the period **October 9, 2019 to November 5, 2019**



WAYS TO SAVE: FIND TIPS AND PROGRAMS THAT HELP

Learn more at atlanticcityelectric.com/WaysToSave

BD OF ED SWEDESORO WOOLWICH

Account number: **5500 8380 523**

Your service address: 1815 KINGS HWY
SWEDESORO NJ 08085

Bill Issue date: Nov 8, 2019

Summary of your charges

Balance from your last bill	\$22.74
Your payment(s) - thank you	\$11.05-
Balance forward as of Nov 8, 2019	\$11.69
New electric charges	\$9.82
New ECPGNJ supply charges	\$0.55
Total amount due by Dec 2, 2019	\$22.06

A past due amount of \$11.69 remained on your account at the time your bill was prepared. If payment has been made, please disregard this notice. For bill payment options, visit www.atlanticcityelectric.com.

Find helpful storm preparation and power outage information at atlanticcityelectric.com

Si recibe un aviso de suspensión, puede solicitar una copia de ese aviso en español, llamando al departamento de atención al cliente, lunes a viernes de las 7 am a las 7 pm, a 800-642-3780.

How to contact us

Customer service (Mon-Fri, 7am - 7pm)

TTY English

TTY Spanish

Electric emergencies & outages (24 hours)

¿Problemas con la factura?

Visit atlanticcityelectric.com

1-800-642-3780

1-800-852-7897

1-866-658-7714

1-800-833-7476

1-800-642-3780

BD OF ED SWEDSBORO WOOLWICH
 Account number: 5500 8380 523

Your electric bill for the period
October 9, 2019 to November 5, 2019

Details of your Electric Charges

Monthly General Service Secondary - service number 0550 0838 0523 7000 1135 53
 Electricity you used this period

Meter Number	Current Reading	Previous Reading	Difference	Multiplier	Total Use
Energy Type 1ND356781779	Nov 5 000833 (actual)	Oct 9 000826 (actual)	7	1	7
Use (kWh)					
Demand (kW)	0.010 (actual)			1	0.01

Load Factor: 104.17%

Your next meter reading is scheduled for December 6, 2019

Delivery Charges: These charges reflect the cost of bringing electricity to you.
 Current charges for 28 days, **winter rates in effect.**
 Capacity/Transmission Peak Load Contribution 0.01 / 0.01

Type of charge	How we calculate this charge	Amount(\$)
Customer Charge		9.30
Distribution Charge	7 kWh X \$0.0514286 per kWh	0.36
Market Transition Tax	7 kWh X \$0.0014286 per kWh	0.01
Transition Bond Charge	7 kWh X \$0.0028571 per kWh	0.02
Non-Utility Generation Charge	7 kWh X \$0.0128571 per kWh	0.09
Societal Benefits Charge	7 kWh X \$0.0057143 per kWh	0.04
EDIT Credit 5 Yr - kWh	7 kWh X \$0.0042857 - per kWh	0.03-
Zero Emission Certif (ZEC) Charge	7 kWh X \$0.0042857 per kWh	0.03
Total Electric Delivery Charges		9.82

Supply Charges: These charges reflect the cost of producing electricity for you.
 You can compare this part of your bill to offers from competitive suppliers. The class average annual price to compare is 9.18 cents per kWh.

Electric Summary	
Balance from your last bill	\$21.64
Payment Oct 15	\$10.50-
Total Payments	\$10.50-
Electric Charges (Monthly General Service Secondary)	\$9.82
New electric charges	\$9.82
Total amount due by Dec 2, 2019	\$20.96

BD OF ED SWEDESBORO WOOLWICH

Account number: 5500 8380 523

05 00000008 200007028

Your electric bill for the period
October 9, 2019 to November 5, 2019

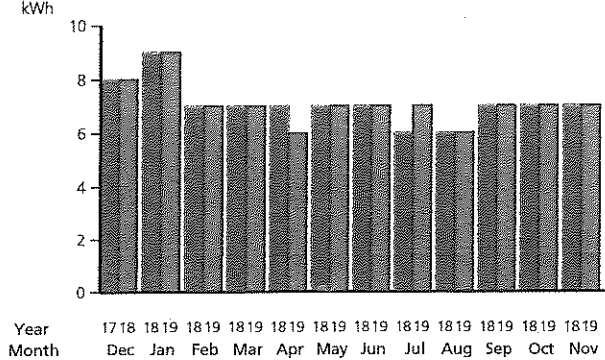


Total Electric Charges - Monthly General Service Secondary

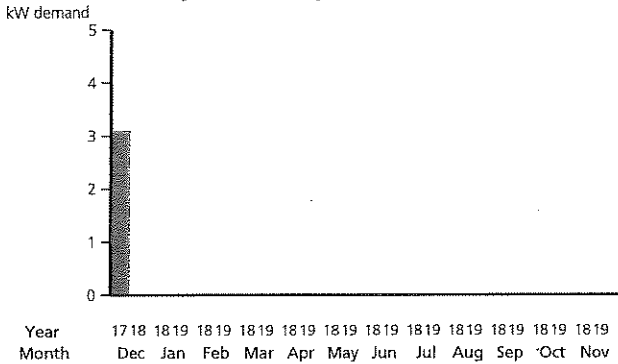
9.82

Your monthly Electricity use in kWh

Daily temperature averages: Nov 2018: 58° F Nov 2019: 57° F



Your monthly Electricity use in kW demand



ECPGNJ electric supply charges

Service number 0550 0838 0523 7000 1135 53

Your electricity is supplied by East Coast Power & Gas NJ, LLC. If you have any questions about your electric supply charges, call East Coast Power & Gas NJ, LLC at 1-800-545-9155.

East Coast Power & Gas NJ, LLC account number: 0550083805237000113553

Billing period: Oct 9, 2019 to Nov 5, 2019 (28 days)

Type of service: Monthly General Service Secondary

THANK YOU FOR USING EAST COAST POWER GAS

ENERGY CHARGE 7KH@0.078200

\$0.00
 \$0.55
Amount(\$)
0.55

ECPGNJ electric charges

ECPGNJ Electric Supply Summary	
Balance from your last bill	\$1.10
Payment Oct 15	\$0.55-
Total Payments	\$0.55-
Total Current Charges	\$0.55
New ECPGNJ electric supply charges	\$0.55
Total amount due by Dec 2, 2019	\$1.10

1007890-0015528-0000003 of 0000004-C17-d1-4268-07897



An Exelon Company

Your electric bill - Nov 2019
for the period October 5, 2019 to November 5, 2019

WAYS TO SAVE: FIND TIPS AND PROGRAMS THAT HELP

Learn more at atlanticcityelectric.com/WaysToSave

BD OF ED SWEDESBORO WOOLWICH

Account number: 5500 8380 952
Your service address: AUBURN RD
SWEDESBORO NJ 08085
Bill issue date: Nov 6, 2019

How to contact us
Customer service (Mon-Fri, 7am - 7pm)
TTY English
TTY Spanish
Electric emergencies & outages (24 hours)
¿Problemas con la factura?
Visit atlanticcityelectric.com

1-800-642-3780
1-800-852-7897
1-866-658-7714
1-800-833-7476
1-800-642-3780

Summary of your charges

Balance from your last bill	\$5,761.24
Your payment(s) - thank you	\$5,984.24
Balance forward as of Nov 6, 2019	\$223.00
New electric charges	\$3,362.21
New ECPGNJ supply charges	\$2,671.31
Total amount due by Nov 27, 2019	\$5,810.52

Find helpful storm preparation and power outage information at atlanticcityelectric.com

Si recibe un aviso de suspensión, puede solicitar una copia de ese aviso en español, llamando al departamento de atención al cliente, lunes a viernes de las 7 am a las 7 pm, a 800-642-3780.

BD OF ED SWEDESORO WOOLWICH
 Account number: 5500 8380 952

Your electric bill for the period
October 5, 2019 to November 5, 2019

Details of your Electric Charges

Annual General Service Secondary - service number 0550 0838 0952 7000 3698 65
 Electricity you used this period

Meter Number	Current Reading	Previous Reading	Difference	Multiplier	Total Use
99A075767014	Nov 5 065815 (actual)	Oct 5 065388 (actual)	427	80	34160
Demand (kW)	2.490 (actual)			80	199.20

Minimum kW demand **159.36**
 Total kW Billing demand **199.20**
 Load Factor: 22.33%

Your next meter reading is scheduled for December 5, 2019

Delivery Charges: These charges reflect the cost of bringing electricity to you.
 Current charges for 32 days, **winter rates in effect.**
 Capacity/Transmission Peak Load Contribution 110.14 / 123.28

Type of charge	How we calculate this charge	Amount(\$)
Customer Charge		206.10
Distribution Charge	199.20 kW X \$11.8293173 per kW	2,356.40
Market Transition Tax	34160 kWh X \$0.0010281 per kWh	35.12
Transition Bond Charge	34160 kWh X \$0.0023999 per kWh	81.98
Non-Utility Generation Charge	34160 kWh X \$0.0122541 per kWh	418.60
Societal Benefits Charge	34160 kWh X \$0.0058320 per kWh	199.22
RGGI Energy Efficiency	34160 kWh X \$0.0004169 per kWh	14.24
EDIT Credit 5 Yr - kWh	34160 kWh X \$0.0027851- per kWh	95.14-
Zero Emission Certif (ZEC) Charge	34160 kWh X \$0.0042649 per kWh	145.69
Total Electric Delivery Charges		3,362.21

Electric Summary	
Balance from your last bill	\$2,702.06
Payment Oct 15	\$2,925.06-
Total Payments	\$2,925.06-
Electric Charges (Annual General Service Secondary)	\$3,362.21
New electric charges	\$3,362.21
Total amount due by Nov 27, 2019	\$3,139.21

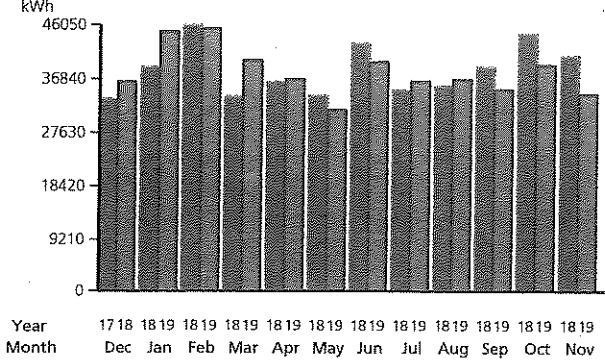


Supply Charges: These charges reflect the cost of producing electricity for you. You can compare this part of your bill to offers from competitive suppliers. The class average annual price to compare is 8.35 cents per kWh.

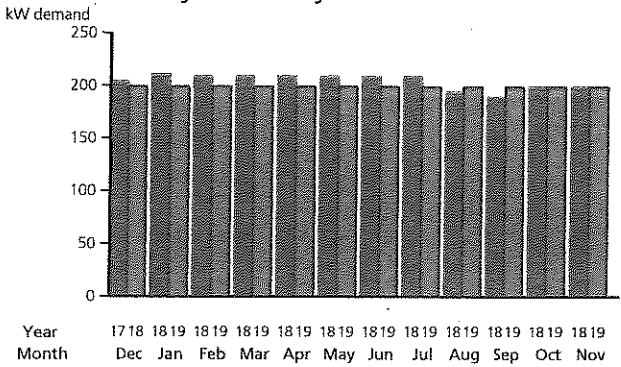
Total Electric Charges - Annual General Service Secondary 3,362.21

Your monthly Electricity use in kWh

Daily temperature averages: Nov 2018: 59° F Nov 2019: 58° F



Your monthly Electricity use in kW demand



ECPGNJ electric supply charges

Service number 0550 0838 0952 7000 3698 65

Your electricity is supplied by East Coast Power & Gas NJ, LLC. If you have any questions about your electric supply charges, call East Coast Power & Gas NJ, LLC at 1-800-545-9155.

East Coast Power & Gas NJ, LLC account number: 0550083809527000369865

Billing period: Oct 5, 2019 to Nov 5, 2019 (32 days)

Type of service: Annual General Service Secondary

THANK YOU FOR USING EAST COAST POWER GAS

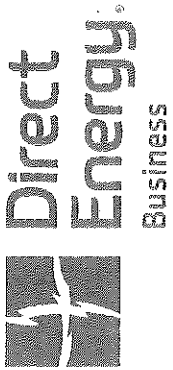
ENERGY CHARGE 34160KH@0.078200

ECPGNJ electric charges

\$0.00
 \$2,671.31
Amount(\$)
2,671.31

ECPGNJ Electric Supply Summary	
Balance from your last bill	\$3,059.18
Payment Oct 15	\$3,059.18-
Total Payments	\$3,059.18-
Total Current	
Charges	\$2,671.31
New ECPGNJ electric supply charges	\$2,671.31
Total amount due by Nov 27, 2019	\$2,671.31

1008339-0017384-0000003 of 0000004-C17-D1-4256-08947



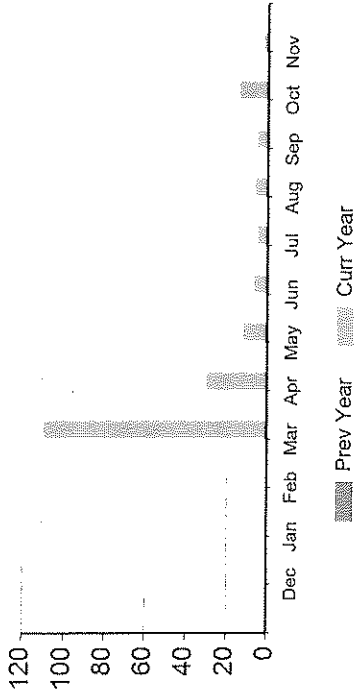
Invoice #: HS91533425
 Account #: 446690 - 11398
 Invoice Date: 11/06/2019
 Payment Due Date: 12/21/2019

CUSTOMER INFORMATION

0000341 T3 0 0322 08085-424115 -C01-P00341-11
 Swedesboro Woolwich Bd of Ed
 Payable, Accounts
 15 Fredrick Boulevard
 Swedesboro, NJ 08085-4241

USAGE HISTORY

Monthly Gas (THERMS)



MESSAGE CENTER

GO PAPERLESS TODAY

Enroll in paperless billing today and help reduce your carbon footprint at directenergybusiness.com/paperless.

INVOICE SUMMARY

Previous Balance	\$4.22
Payment Received (Oct 22, 2019)	(\$2.43)
Total Balance Forward	\$1.79
Adjustments	\$0.00
Late Payment Charge	\$0.00
Current Usage Charges	\$6.11
Total Current Charges	\$6.11

Amount Due by Dec 21, 2019 **\$7.90**

PAYMENT OPTIONS

- By web myaccount.directenergy.com
- By phone 1.888.925.9115
- By mail Remittance slip below

QUESTIONS?

- Visit Us myaccount.directenergy.com
- Call Us 1.888.925.9115

Detach here and return this portion with check or money order. Do not staple or fold.

Invoice #: HS91533425
Statement Group #: 11398

Contract Volumes:
October 115 MMBTU
November 424 MMBTU
Basis: \$1.022
Billing Unit: MMBTU

Serv Loc ID:	Description	Deal ID	Date From - To	Volume	Unit Price	Total
447523	Commodity	2107295	10/04/2019 -10/31/2019	1.40	\$3.678563	\$5.15
Service Period: 10/04/2019-11/05/2019	Commodity	2107295	11/01/2019 -11/05/2019	0.25	\$3.858759	\$0.96
Utility Name: South Jersey Gas						
Pool/Point: SJG DCQ POOL						
Utility Acct #: 3010019873-0340571						
PO #:						
Address: PO Box 216, SWEDESBORO, NJ 08085						
		Total :		1.65		\$6.11

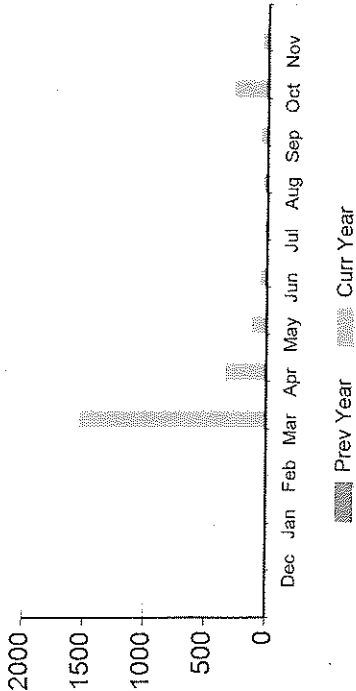


CUSTOMER INFORMATION

0000341 T3 0322 08085-424115 -C01-P00341-11
 Swedesboro Woolwich Bd of Ed
 Payable, Accounts
 15 Fredrick Boulevard
 Swedesboro, NJ 08085-4241

USAGE HISTORY

Monthly Gas (THERMS)



MESSAGE CENTER

GO PAPERLESS TODAY

Enroll in paperless billing today and help reduce your carbon footprint at directenergybusiness.com/paperless.

Invoice #: HS91533424
 Account #: 446690 - 11397
 Invoice Date: 11/06/2019
 Payment Due Date: 12/21/2019

INVOICE SUMMARY

Previous Balance \$35.76
 Payment Received (Oct 22, 2019) (\$14.02)
 Total Balance Forward \$21.74
 Adjustments \$0.00
 Late Payment Charge \$0.00
 Current Usage Charges \$122.32
 Total Current Charges \$122.32

Amount Due by Dec 21, 2019 \$144.06

PAYMENT OPTIONS

By web myaccount.directenergy.com
 By phone 1.888.925.9115
 By mail Remittance slip below

QUESTIONS?

Visit Us myaccount.directenergy.com
 Call Us 1.888.925.9115

Detach here and return this portion with check or money order. Do not staple or fold.

Invoice #: HS91533424
Statement Group #: 11397

Contract Volumes:
October 115 MMBTU
November 424 MMBTU
Basis: \$1.022
Billing Unit: MMBTU

Serv Loc ID:	Description	Deal ID	Date From - To	Volume	Unit Price	Total
447522	Commodity	2107295	10/05/2019 -10/31/2019	27.84	\$3.678563	\$102.41
Service Period: 10/05/2019-11/05/2019	Commodity	2107295	11/01/2019 -11/05/2019	5.16	\$3.858759	\$19.91
Utility Name: South Jersey Gas						
Pool/Point: SJG DCQ POOL						
Utility Acct #: 1010019871-0555351						
PO #:						
Address: PO Box 216, SWEDESBORO, NJ 08085						
		Total :		33.00		\$122.32

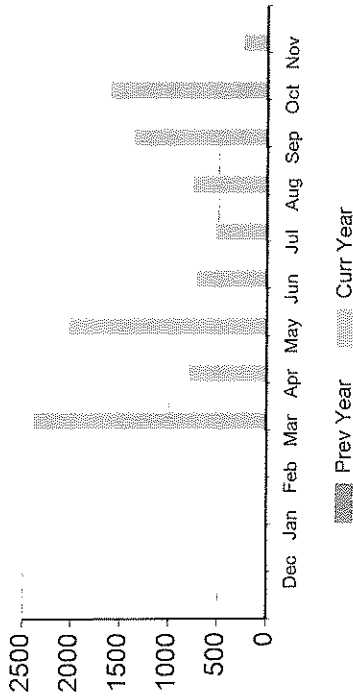


CUSTOMER INFORMATION

0000206 T2 0 0323 08085-424115 -C01-P00206-I1
 Swedesboro Woolwich Bd of Ed
 Payable, Accounts
 15 Fredrick Boulevard
 Swedesboro, NJ 08085-4241

USAGE HISTORY

Monthly Gas (THERMS)



MESSAGE CENTER

GO PAPERLESS TODAY

Enroll in paperless billing today and help reduce your carbon footprint at directenergybusiness.com/paperless.

Invoice #: HS91536354
 Account #: 446690 - 24235
 Invoice Date: 11/07/2019
 Payment Due Date: 12/22/2019

INVOICE SUMMARY

Previous Balance \$823.98
 Payment Received (Oct 22, 2019) (\$291.08)
Total Balance Forward \$532.90

Adjustments \$0.00
 Late Payment Charge \$0.00
 Current Usage Charges \$554.59
Total Current Charges \$554.59

Amount Due by Dec 22, 2019 \$1,087.49

PAYMENT OPTIONS

- By web myaccount.directenergy.com
- By phone 1.888.925.9115
- By mail Remittance slip below

QUESTIONS?

- Visit Us myaccount.directenergy.com
- Call Us 1.888.925.9115

Detach here and return this portion with check or money order. Do not staple or fold.

Invoice #: HS91536354
Statement Group #: 24235

Contract Volumes:
October 115 MMBTU
November 424 MMBTU
Basis: \$1.022
Billing Unit: MMBTU

Serv Loc ID:	Description	Deal ID	Date From - To	Volume	Unit Price	Total
569190	Commodity	2107295	10/08/2019 -10/31/2019	123.72	\$3.678563	\$455.11
Service Period: 10/08/2019-11/05/2019	Commodity	2107295	11/01/2019 -11/05/2019	25.78	\$3.858759	\$99.48
Utility Name: South Jersey Gas						
Pool/Point: SJG DCQ POOL						
Utility Acct #: 1980020789-0542930						
PO #:						
Address: PO Box 216, SWEDESBORO, NJ 08085						
		Total :		149.50		\$554.59



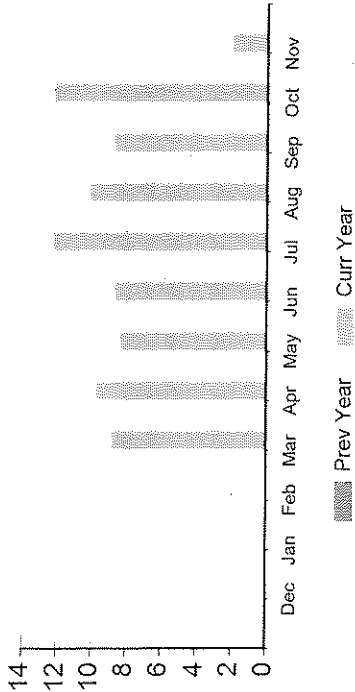
Invoice #: HS91536355
 Account #: 446690 - 24236
 Invoice Date: 11/07/2019
 Payment Due Date: 12/22/2019

CUSTOMER INFORMATION

0000206 T2 0 0823 08085-424115 -C01-P00206-11
 Swedesboro Woolwich Bd of Ed
 Payable, Accounts
 15 Fredrick Boulevard
 Swedesboro, NJ 08085-4241

USAGE HISTORY

Monthly Gas (THERMS)



MESSAGE CENTER

GO PAPERLESS TODAY

Enroll in paperless billing today and help reduce your carbon footprint at directenergybusiness.com/paperless.

INVOICE SUMMARY

Previous Balance	\$6.10
Payment Received	\$0.00
Total Balance Forward	\$6.10
Adjustments	\$0.00
Late Payment Charge	\$0.04
Current Usage Charges	\$4.56
Total Current Charges	\$4.60

Amount Due by Dec 22, 2019 **\$10.70**

PAYMENT OPTIONS

- By web myaccount.directenergy.com
- By phone 1.888.925.9115
- By mail Remittance slip below

QUESTIONS?

- Visit Us myaccount.directenergy.com
- Call Us 1.888.925.9115

Detach here and return this portion with check or money order. Do not staple or fold.

Invoice #: HS91536355
Statement Group #: 24236

Contract Volumes:
October 115 MMBTU
November 424 MMBTU
Basis: \$1.022
Billing Unit: MMBTU

Serv Loc ID:	Description	Deal ID	Date From - To	Volume	Unit Price	Total
569189	Commodity	2107295	10/08/2019 -10/31/2019	1.02	\$3.678563	\$3.75
Service Period: 10/08/2019-11/05/2019	Commodity	2107295	11/01/2019 -11/05/2019	0.21	\$3.858759	\$0.81
Utility Name: South Jersey Gas						
Pool/Point: SJG DCQ POOL						
Utility Acct #: 2980020790-0670110						
PO #:						
Address: PO Box 216, SWEDESBORO, NJ 08085						
		Total :		1.23		\$4.56



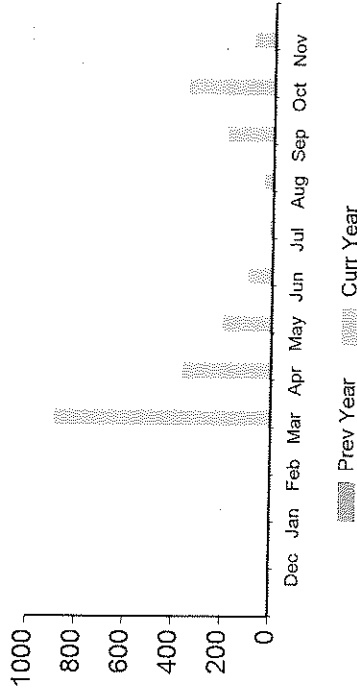
Invoice #: HS91540604
 Account #: 446690 - 11399
 Invoice Date: 11/11/2019
 Payment Due Date: 12/26/2019

CUSTOMER INFORMATION

0000433 T3 0 0325 06085-424115 -C01-P00433-11
 Swedesboro Woolwich Bd of Ed
 Payable, Accounts
 15 Fredrick Boulevard
 Swedesboro, NJ 08085-4241

USAGE HISTORY

Monthly Gas (THERMS)



MESSAGE CENTER

GO PAPERLESS TODAY

Enroll in paperless billing today and help reduce your carbon footprint at directenergybusiness.com/paperless.

INVOICE SUMMARY

Previous Balance	\$116.32
Payment Received (Oct 22, 2019)	(\$21.07)
Total Balance Forward	\$95.25
Adjustments	\$0.00
Late Payment Charge	\$0.00
Current Usage Charges	\$134.35
Total Current Charges	\$134.35

Amount Due by Dec 26, 2019

Handwritten: \$229.60

PAYMENT OPTIONS

- By web myaccount.directenergy.com
- By phone 1.888.925.9115
- By mail Remittance slip below

QUESTIONS?

- Visit Us myaccount.directenergy.com
- Call Us 1.888.925.9115

Detach here and return this portion with check or money order. Do not staple or fold

Invoice #: HS91540604
Statement Group #: 11399

Contract Volumes:
October 115 MMBTU
November 424 MMBTU
Basis: \$1.022
Billing Unit: MMBTU

Serv Loc ID:	Description	Deal ID	Date From - To	Volume	Unit Price	Total
447524						
Service Period: 10/11/2019-11/07/2019	Commodity	2107295	10/11/2019 -10/31/2019	27.06	\$3.678563	\$99.54
Utility Name: South Jersey Gas	Commodity	2107295	11/01/2019 -11/07/2019	9.02	\$3.858759	\$34.81
Pool/Point: SJG DCQ POOL						
Utility Acct #: 6010073112-0594875						
PO #:						
Address: PO Box 216, SWEDESBORO, NJ 08085						
		Total :		36.08		\$134.35



SERVICE FOR MARGARET C CLIFFORD
SCHOOL
601 AUBURN AVE
SWEDESORO NJ 08085

November 5, 2019
Account Number: 1015910000
Report gas leak: 800-582-7060
Customer Contact Center: 888-766-9900
www.southjerseygas.com

11/19/19

BILLING SUMMARY FOR OCTOBER 4, 2019 TO NOVEMBER 5, 2019

Previous Balance	\$134.54
Payment Received on October 16, 2019	-\$61.57
Past Due Balance	\$72.97
Gas Charges	\$72.97
Current Charges	\$280.23
Gas Charges	\$280.23
Amount Due By November 22, 2019	\$353.20

Next meter reading is scheduled for December 5, 2019

Thank you for your partial payment. Your remaining balance is still overdue. Please submit your remaining balance to keep your account in good standing.

USAGE DETAIL

Meter	Start Date	End Date	End Reading	Start Reading	Read Difference	Multiplier	Gas Used CCF	Therm Factor	Energy Used (Therms)
0555351	10-04-19	11-05-19	6,561*	6,529	32	10	320.00	1.0310	329.92

All readings are actual unless otherwise noted with an asterisk(*).

USAGE COSTS

Customer Charge	\$34.09
Delivery Charge	329.92 Therms x \$0.658871 = \$217.39
Balancing Service Charge	329.92 Therms x \$0.087115 = \$28.75
Total Usage Costs	\$280.23

Service Agreement: 1010019871

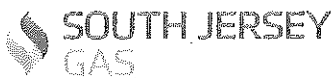
Your rate schedule: General Service FT(GSGFT)

USAGE HISTORY - COMPARISON

Month	Energy used (therms)	Days in Period	Average Temperature
November 2018	340.89	33	57.73°
November 2019	329.92	32	55.90°

Automated Payments available. Enjoy the convenience of paying your bill automatically every month. Save a stamp, time and paper. Plus, it's free, secure and one less thing to think about. Enroll today at myaccount.southjerseygas.com or by phone at 1.866.334.6012.

SR191105000001664000000001.XML-3011-000000620



Enclose this section with your payment. Please do not staple or clip.

Check for name, address, phone, email corrections; complete on reverse side.

Account Number 1015910000

Amount Due **\$353.20**

Due Date November 22, 2019

001506 000000620



MARGARET C CLIFFORD SCHOOL
15 FREDRICK BLVD
SWEDESORO NJ 08085-4211



PO BOX 6091
BELLMAWR, NJ 08099-6091

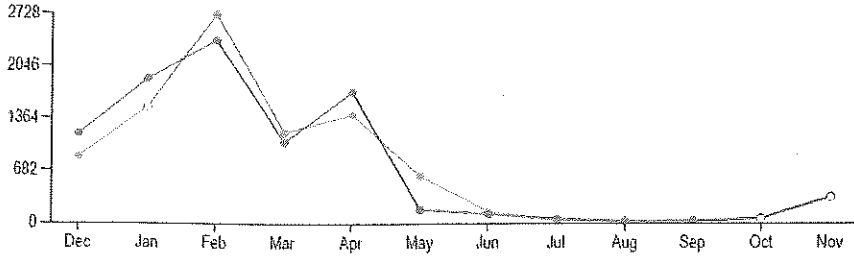
1015910000

35320117

ANNUAL COMPARISON

Energy (therms x 100)

○ Estimated Reading --- Last Year
● Actual Reading --- This Year



NEWS FROM SOUTH JERSEY GAS

November Customer Service Schedule

Our Customer Contact Center and Customer Service Centers will be closed Thursday, November 28 and Friday, November 29 in observance of Thanksgiving. Wishing you a happy and safe holiday.





SERVICE FOR WALTER HILL PRE-SCHOOL
815 KINGS HWY
SWEDESBORO NJ 08085

November 5, 2019
Account Number: 3015910000
Report gas leak: 800-582-7060
Customer Contact Center: 888-766-9900
www.southjerseygas.com

BILLING SUMMARY FOR OCTOBER 3, 2019 TO NOVEMBER 5, 2019

Previous Balance	\$34.46
Past Due Balance	\$34.46
Gas Charges	\$34.46
Current Charges	\$47.45
Gas Charges	\$47.45
Amount Due By November 22, 2019	\$81.91

Next meter reading is scheduled for December 4, 2019

Your payment for the balance is past due. If you already submitted a payment, thank you. If not, please submit a payment to keep your account in good standing.

Subject to late payment charge if not paid by the due date.

USAGE DETAIL

Meter	Start Date	End Date	End Reading	Start Reading	Read Difference	Multiplier	Gas Used CCF	Therm Factor	Energy Used (Therms)
0340571	10-03-19	11-05-19	3,527	3,511	16	1	16.00	1.0310	16.50

All readings are actual unless otherwise noted with an asterisk(*).

USAGE COSTS

Customer Charge	\$35.15
Delivery Charge	16.50 Therms x \$0.658872 = \$10.86
Balancing Service Charge	16.50 Therms x \$0.087093 = \$1.44
Total Usage Costs	\$47.45

Service Agreement: 3010019873

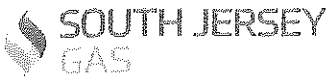
Your rate schedule: General Service FT(GSGFT)

USAGE HISTORY - COMPARISON

Month	Energy used (therms)	Days in Period	Average Temperature
November 2018	6.20	33	57.73°
November 2019	16.50	33	55.94°

Automated Payments available. Enjoy the convenience of paying your bill automatically every month. Save a stamp, time and paper. Plus, it's free, secure and one less thing to think about. Enroll today at myaccount.southjerseygas.com or by phone at 1.866.334.6012.

SR191105000000106640000000002.XML-2936-000000639



Enclose this section with your payment. Please do not staple or clip.

Account Number 3015910000

Check for name, address, phone, email corrections; complete on reverse side.

Amount Due \$81.91

Due Date November 22, 2019

001468 000000639



WALTER HILL PRE-SCHOOL
15 FREDRICK BLVD
SWEDESBORO NJ 08085-4241

PO BOX 6091
BELLMAWR, NJ 08099-6091

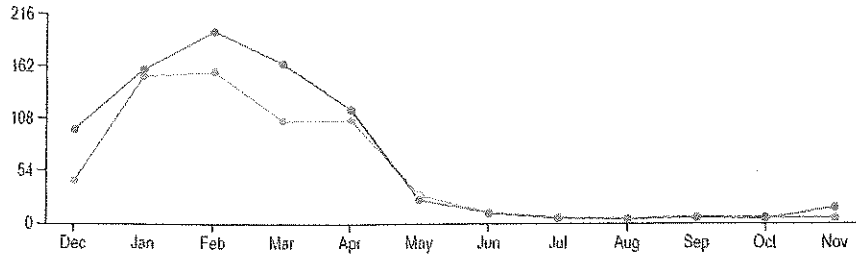
3015910000

8191919

ANNUAL COMPARISON

Energy (therms x 100)

○ Estimated Reading - - - Last Year
● Actual Reading - - - This Year



NEWS FROM SOUTH JERSEY GAS

November Customer Service Schedule

Our Customer Contact Center and Customer Service Centers will be closed Thursday, November 28 and Friday, November 29 in observance of Thanksgiving. Wishing you a happy and safe holiday.





SERVICE FOR SWEDESBORO-WOOLWICH
 SCHOOL DIS
 1771B OLDMANS CREEK RD
 WOOLWICH TWP NJ 08085

November 6, 2019
 Account Number: 2985910000
 Report gas leak: 800-582-7060
 Customer Contact Center: 888-766-9900
 www.southjerseygas.com

11/5/17

BILLING SUMMARY FOR OCTOBER 7, 2019 TO NOVEMBER 5, 2019

Previous Balance \$76.16
 Payment Received on October 16, 2019 -\$40.53
 Next meter reading is scheduled for December 6, 2019

Past Due Balance \$35.63
 Gas Charges \$35.63
 Current Charges \$40.12
 Gas Charges \$40.12
 Amount Due By November 25, 2019 \$75.75

Thank you for your partial payment. Your remaining balance is still overdue. Please submit your remaining balance to keep your account in good standing.
 Subject to late payment charge if not paid by the due date.

USAGE DETAIL

Meter	Start Date	End Date	End Reading	Start Reading	Difference	Read	Multiplier	Gas Used CCF	Therm Factor	Energy Used (Therms)
0670110	10-07-19	11-05-19	181	169	12	12	1	12.00	1.0310	12.37

All readings are actual unless otherwise noted with an asterisk(*).

USAGE COSTS

Customer Charge \$30.89
 Delivery Charge 12.37 Therms x \$0.658866 \$8.15
 Balancing Service Charge 12.37 Therms x \$0.087128 \$1.08
 Total Usage Costs \$40.12
 Service Agreement: 2980020790
 Your rate schedule: General Service Non-Heat FT(GSGNHFT)

USAGE HISTORY - COMPARISON

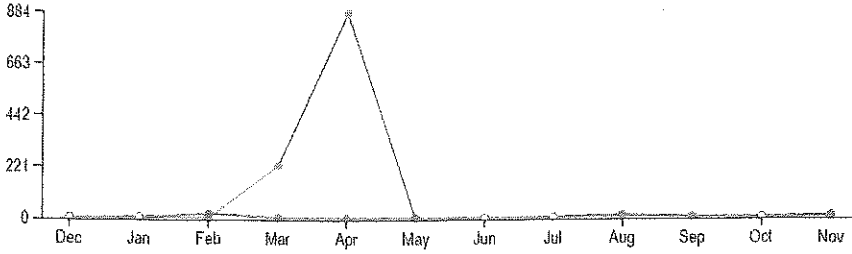
Month	Energy used (therms)	Days in Period	Average Temperature
November 2018	16.53	33	56.98°
November 2019	12.37	29	56.70°

Automated Payments available.
 Enjoy the convenience of paying your bill automatically every month. Save a stamp, time and paper. Plus, it's free, secure and one less thing to think about. Enroll today at myaccount.southjerseygas.com or by phone at 1.866.334.6012.

ANNUAL COMPARISON

Energy (therms x 100)

◊ Estimated Reading — Last Year
◆ Actual Reading — This Year



NEWS FROM SOUTH JERSEY GAS



November Customer Service Schedule

Our Customer Contact Center and Customer Service Centers will be closed Thursday, November 28 and Friday, November 29 in observance of Thanksgiving. Wishing you a happy and safe holiday.





SERVICE FOR SWEDESBORO-WOOLWICH
 SCHOOL DIS
 1771 OLDMANS CREEK RD
 WOOLWICH TWP NJ 08085

November 6, 2019
 Account Number: 1985910000
 Report gas leak: 800-582-7060
 Customer Contact Center: 888-766-9900
 www.southjerseygas.com

11/5/19

BILLING SUMMARY FOR OCTOBER 7, 2019 TO NOVEMBER 5, 2019

Previous Balance \$1,715.01
 Payment Received on October 16, 2019 -\$619.06
 Next meter reading is scheduled for December 6, 2019

Past Due Balance \$1,095.95
 Gas Charges \$1,095.95
 Thank you for your partial payment. Your remaining balance is still overdue. Please submit your remaining balance to keep your account in good standing.

Current Charges \$1,146.11
 Gas Charges \$1,146.11
 Subject to late payment charge if not paid by the due date.

Amount Due By November 25, 2019 \$1,142.06

USAGE DETAIL

Meter	Start Date	End Date	End Reading	Start Reading	Read Difference	Multiplier	Gas Used CCF	Therm Factor	Energy Used (Therms)
0542930	10-07-19	11-05-19	2,498	2,353	145	10	1,450.00	1.0310	1,494.95

All readings are actual unless otherwise noted with an asterisk(*).

USAGE COSTS

Customer Charge \$30.89
 Delivery Charge 1,494.95 Therms x \$0.658871 \$984.99
 Balancing Service Charge 1,494.95 Therms x \$0.087115 \$130.23
 Total Usage Costs \$1,146.11
 Service Agreement: 1980020789
 Your rate schedule: General Service FT(GSGFT)

USAGE HISTORY - COMPARISON

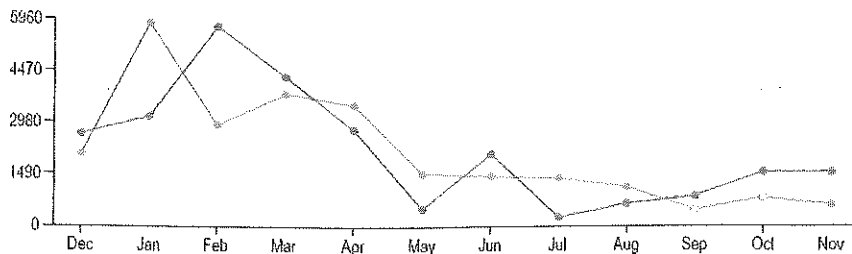
Month	Energy used (therms)	Days in Period	Average Temperature
November 2018	599.14	33	56.98°
November 2019	1494.95	29	56.70°

Automated Payments available.
 Enjoy the convenience of paying your bill automatically every month. Save a stamp, time and paper. Plus, it's free, secure and one less thing to think about. Enroll today at myaccount.southjerseygas.com or by phone at 1.866.334.6012.

ANNUAL COMPARISON

Energy (therms x 100)

○ Estimated Reading - - - Last Year
● Actual Reading - - - This Year



NEWS FROM SOUTH JERSEY GAS

i November Customer Service Schedule

Our Customer Contact Center and Customer Service Centers will be closed Thursday, November 28 and Friday, November 29 in observance of Thanksgiving. Wishing you a happy and safe holiday.





SERVICE FOR SWEDESBORO
 ELEMENTARY SCHOOL
 15 FREDRICK BLVD
 SWEDESBORO NJ 08085

November 8, 2019
 Account Number: 6019020000
 Report gas leak: 800-582-7060
 Customer Contact Center: 888-766-9900
 www.southjerseygas.com

11/5/19

BILLING SUMMARY FOR OCTOBER 10, 2019 TO NOVEMBER 7, 2019

Previous Balance \$299.75
 Payment Received on October 16, 2019 -\$77.96

Next meter reading is scheduled for December 7, 2019

Past Due Balance \$221.79
 Gas Charges \$221.79

Thank you for your partial payment. Your remaining balance is still overdue. Please submit your remaining balance to keep your account in good standing.

Current Charges \$299.02
 Gas Charges \$299.02

Subject to late payment charge if not paid by the due date.

Amount Due By November 25, 2019 \$299.02

USAGE DETAIL

Meter	Start Date	End Date	End Reading	Start Reading	Read Difference	Multiplier	Gas Used CCF	Therm Factor	Energy Used (Therms)
0594875	10-10-19	11-07-19	3,675*	3,640	35	10	350.00	1.0310	360.85

All readings are actual unless otherwise noted with an asterisk (*).

USAGE COSTS

Customer Charge \$29.82
 Delivery Charge 360.85 Therms x \$0.658871 \$237.77
 Balancing Service Charge 360.85 Therms x \$0.087115 \$31.43
 Total Usage Costs \$299.02

Service Agreement: 6010073112

Your rate schedule: General Service FT(GSGFT)

USAGE HISTORY - COMPARISON

Month	Energy used (therms)	Days in Period	Average Temperature
November 2018	413.20	30	55.57°
November 2019	360.85	28	55.61°

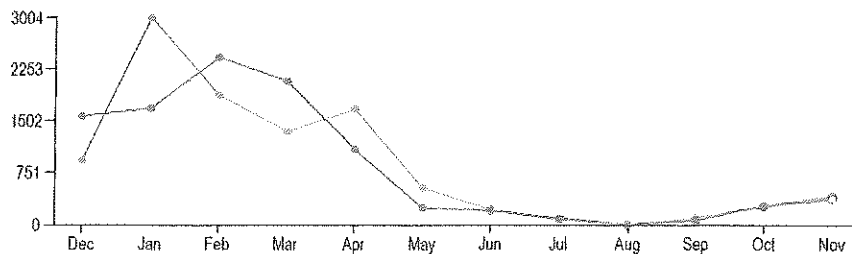
Automated Payments available.

Enjoy the convenience of paying your bill automatically every month. Save a stamp, time and paper. Plus, it's free, secure and one less thing to think about. Enroll today at myaccount.southjerseygas.com or by phone at 1.866.334.6012.

ANNUAL COMPARISON

Energy (therms x 100)

○ Estimated Reading — Last Year
● Actual Reading — This Year



NEWS FROM SOUTH JERSEY GAS

November Customer Service Schedule

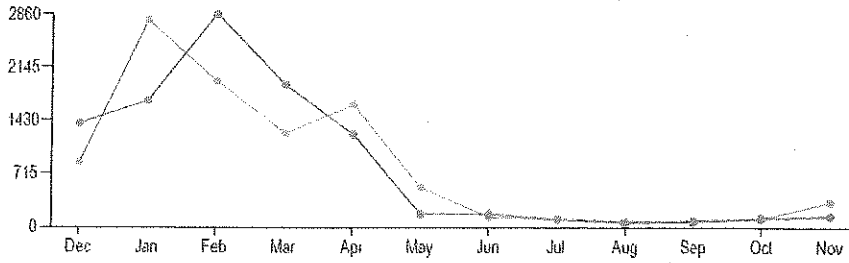
Our Customer Contact Center and Customer Service Centers will be closed Thursday, November 28 and Friday, November 29 in observance of Thanksgiving. Wishing you a happy and safe holiday.



ANNUAL COMPARISON

Energy (therms x 100)

○ Estimated Reading - - - Last Year
● Actual Reading - - - This Year



NEWS FROM SOUTH JERSEY GAS

November Customer Service Schedule

Our Customer Contact Center and Customer Service Centers will be closed Thursday, November 28 and Friday, November 29 in observance of Thanksgiving. Wishing you a happy and safe holiday.

