



Service To:  
**WOOLWICH ELEM SCHOOL**  
**15 FREDERICK BLVD-SCHOOL**  
**WOOLWICH TOWNSHIP, NJ 08085**

*WAP*

Account Number  
**001043048 0754328**  
 SOUTHERN DIVISION  
 1250300 PWSID # NJ0824001

Aqua New Jersey, Inc.  
 762 W. Lancaster Avenue  
 Bryn Mawr, PA 19010-3489

Toll Free: **877.987.2782**  
 Fax: **866.780.8292**  
 www.aquaamerica.com

Questions about your water/sewer service?... Contact us before the due date.

Bill Date  
**May 26, 2020**

Total Amount Due  
**\$ 1,960.40**

Current Charges Due Date  
**June 17, 2020**

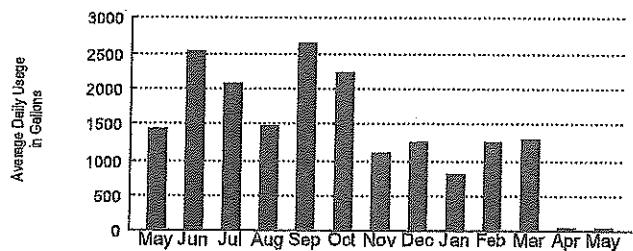
**Meter Data**

Meter	Size	Billing Period	Days	Read Type	Meter Readings	Usage	Units
70114043	4"	05/20/20	29	Actual	1118000	2,000	Gallons
		04/21/20		Actual	1116000		
Average Daily Usage = 68 Gallons		Total Days: 29		Total Usage:		2,000	Gallons

**Billing Detail**

Amount Owed from Last Bill .....	\$ 1,960.40
Total Payments Received .....	1,960.40
<b>Remaining Balance .....</b>	<b>0.00</b>
Customer Charge Water .....	412.50
2,000 gallons @ \$0.006452 per gallon.....	12.90
Current Water Charges.....	425.40
Current Sewer Charges.....	1,535.00
<b>Amount Due.....</b>	<b>\$ 1,960.40</b>

**Water Usage History**



Read Types:  Actual  Estimated  Customer



Service To:  
**WOOLWICH BOARD OF EDUCATIO**  
**OLDMANS CREEK RD**  
**WOOLWICH, NJ 08085**

Account Number  
**001008402 1082214**  
 SOUTHERN DIVISION  
 1250300 PWSID # NJ0824001

**Aqua New Jersey, Inc.**  
 762 W. Lancaster Avenue  
 Bryn Mawr, PA 19010-3489

Toll Free: **877.987.2782**  
 Fax: **866.780.8292**  
 www.aquaamerica.com

Questions about your water/sewer service?... Contact us before the due date.

Bill Date **May 26, 2020** Total Amount Due **\$ 6,522.34** Current Charges Due Date **June 17, 2020**

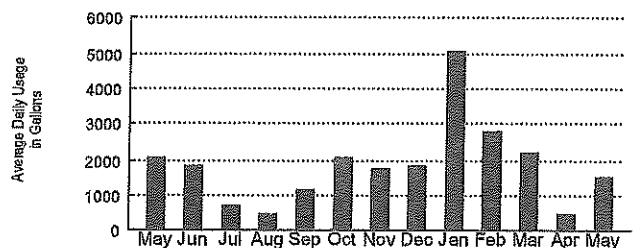
**Meter Data**

Meter	Size	Billing Period	Days	Read Type / Meter Readings	Usage	Units
80010158	8"	05/20/20 04/21/20	29	A 300000 A 8119000 A 300000 A 8074000	45,000	Gallons
Average Daily Usage = 1,551 Gallons		Total Days: 29		* A = Actual E = Estimated	Total Usage: 45,000	Gallons

**Billing Detail**

Amount Owed from Last Bill .....	\$ 6,335.23
Total Payments Received .....	6,335.23
<b>Remaining Balance .....</b>	<b>0.00</b>
Customer Charge Water .....	1,320.00
45,000 gallons @ \$0.006452 per gallon .....	290.34
Current Water Charges .....	1,610.34
Current Sewer Charges .....	4,912.00
<b>Amount Due .....</b>	<b>\$ 6,522.34</b>

**Water Usage History**



Read Types:  Actual  Estimated  Customer



Service To:  
WOOLWICH BOARD OF EDUCATIO  
15 FREDERICK BLVD-FIRE SER  
WOOLWICH TOWNSHIP, NJ 08085

Account Number  
**001008402 0723805**  
SOUTHERN DIVISION  
1250300 PWSID # NJ0824001

Aqua New Jersey, Inc.  
762 W. Lancaster Avenue  
Bryn Mawr, PA 19010-3489

Toll Free: **877.987.2782**  
Fax: **866.780.8292**  
[www.aquaamerica.com](http://www.aquaamerica.com)

Questions about your fire service?... Contact us before the due date.

Bill Date  
**May 29, 2020**

Total Amount Due  
**\$ 321.32**

Current Charges Due Date  
**June 22, 2020**

### Billing Detail

For period  
beginning April 27, 2020 and ending May 28, 2020

Amount Owed from Last Bill .....	\$ 321.32
Total Payments Received .....	321.32
Remaining Balance .....	0.00
Total Water Charges .....	321.32
Amount Due .....	\$ 321.32



An Exelon Company

05 00000008 200007795

Your electric bill - May 2020  
for the period April 7, 2020 to May 5, 2020



## WAYS TO SAVE: FIND TIPS AND PROGRAMS THAT HELP

Learn more at [atlanticcityelectric.com/WaysToSave](http://atlanticcityelectric.com/WaysToSave)

### BD OF ED SWEDESBORO WOOLWICH

Account number: 5500 8380 069

Your service address: KINGS HWY.

SWEDESBORO NJ 08085

Bill issue date: May 8, 2020

### How to contact us

Customer service (Mon-Fri, 7am - 7pm)

TTY English

TTY Spanish

Electric emergencies & outages (24 hours)

¿Problemas con la factura?

Visit [atlanticcityelectric.com](http://atlanticcityelectric.com)

1-800-642-3780

1-800-852-7897

1-866-658-7714

1-800-833-7476

1-800-642-3780

### Summary of your charges

Balance from your last bill	\$12,307.38
Your payment(s) - thank you	\$12,307.62
Balance forward as of May 8, 2020	\$0.24
New electric charges	\$2,658.03
New ECPGNJ supply charges	\$1,801.73
<b>Total amount due by May 29, 2020</b>	<b>\$4,459.52</b>

Find helpful storm preparation and power outage information at [atlanticcityelectric.com](http://atlanticcityelectric.com)

Si recibe un aviso de suspensión, puede solicitar una copia de ese aviso en español, llamando al departamento de atención al cliente, lunes a viernes de las 7 am a las 7 pm, a 800-642-3780.

For information about regulatory rate reviews, public hearings, and other public processes, visit [atlanticcityelectric.com/PublicPostings](http://atlanticcityelectric.com/PublicPostings).

1007844-0015392-0000001 of 0000004-C17-d1-1035-07844

**BD OF ED SWEDESBORO WOOLWICH**  
**Account number: 5500 8380 069**

Your electric bill for the period  
**April 7, 2020 to May 5, 2020**

**Details of your Electric Charges**

Annual General Service Secondary - service number 0550 0838 0069 7001 8863 42  
 Electricity you used this period

Meter Number	Current Reading	Previous Reading	Difference	Multiplier	Total Use
99A084534406	May 5 034268 (actual)	Apr 7 033980 (actual)	288	80	23040
Demand (kW)	0.710 (actual)			80	56.80
Demand (kVAR)	0.530 (actual)			80	42.40

Minimum kW demand **177.92**  
 Total kW Billing demand **177.92**  
 Load Factor: **58.28%**      Power Factor: **80.13%**

Your next meter reading is scheduled for June 5, 2020

Delivery Charges: These charges reflect the cost of bringing electricity to you.  
 Current charges for 29 days, winter rates in effect.  
 Capacity/Transmission Peak Load Contribution 128.67 / 128.09

Type of charge	How we calculate this charge	Amount(\$)
Customer Charge		186.78
Distribution Charge	177.92 kW X \$10.7589928 per kW	1,914.24
Reactive Demand Charge		19.51
Market Transition Tax	23040 kWh X \$0.0010282 per kWh	23.69
Transition Bond Charge	23040 kWh X \$0.0024002 per kWh	55.30
Non-Utility Generation Charge	23040 kWh X \$0.0122539 per kWh	282.33
Societal Benefits Charge	23040 kWh X \$0.0058325 per kWh	134.38
RGGI Energy Efficiency	23040 kWh X \$0.0003342 per kWh	7.70
EDIT Credit 5 Yr - kWh	23040 kWh X \$0.0027852- per kWh	64.17-

Electric Summary	
Balance from your last bill	\$6,257.83
Payment Apr 22	\$6,258.07-
<b>Total Payments</b>	<b>\$6,258.07-</b>
Electric Charges (Annual General Service Secondary)	\$2,658.03
<b>New electric charges</b>	<b>\$2,658.03</b>
<b>Total amount due by May 29, 2020</b>	<b>\$2,657.79</b>

**BD OF ED SWEDESBORO WOOLWICH**  
**Account number: 5500 8380 069**

Your electric bill for the period  
**April 7, 2020 to May 5, 2020**



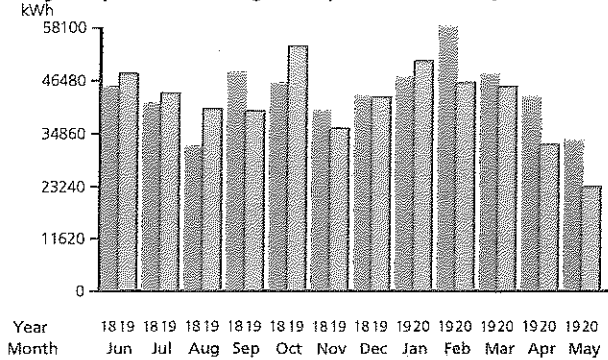
Zero Emission Certif (ZEC)  
 Charge 23040 kWh X \$0.0042652 per kWh 98.27  
**Total Electric Delivery Charges 2,658.03**

Supply Charges: These charges reflect the cost of producing electricity for you.  
 You can compare this part of your bill to offers from competitive suppliers. The class  
 average annual price to compare is 8.34 cents per kWh.

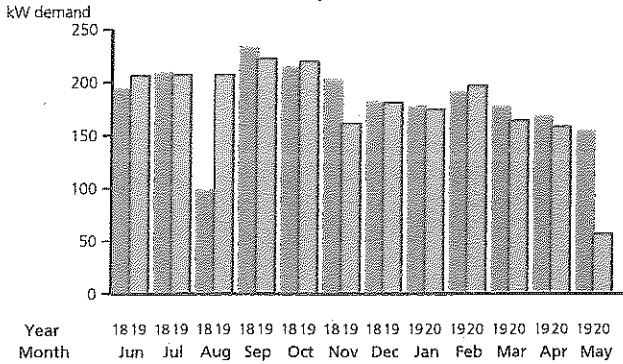
**Total Electric Charges - Annual General Service Secondary 2,658.03**

**Your monthly Electricity use in kWh**

Daily temperature averages: May 2019: 58° F May 2020: 53° F



**Your monthly Electricity use in kW demand**



**ECPGNJ electric supply charges**

Service number **0550 0838 0069 7001 8863 42**

Your electricity is supplied by East Coast Power & Gas NJ, LLC. If you have any questions about your electric supply charges, call East Coast Power & Gas NJ, LLC at 1-800-545-9155.

East Coast Power & Gas NJ, LLC account number: 0550083800697001886342

Billing period: Apr 7, 2020 to May 5, 2020 (29 days)

Type of service: Annual General Service Secondary

ENERGY CHARGE 23040KH@0.078200 **\$1,801.73**  
 Amount(\$)  
**1,801.73**

<b>ECPGNJ Electric Supply Summary</b>	
<b>Balance from your last bill</b>	<b>\$6,049.55</b>
Payment Apr 22	\$6,049.55--
<b>Total Payments</b>	<b>\$6,049.55--</b>
Total Current Charges	\$1,801.73
<b>New ECPGNJ electric supply charges</b>	<b>\$1,801.73</b>
<b>Total amount due by May 29, 2020</b>	<b>\$1,801.73</b>

1007844-0015393-0000003 of 0000004-C17-d1-1035-07844



An Exelon Company

17.02000008 200007460

Your electric bill - May 2020  
for the period April 25, 2020 to May 22, 2020



## WAYS TO SAVE: FIND TIPS AND PROGRAMS THAT HELP

Learn more at [atlanticcityelectric.com/WaysToSave](http://atlanticcityelectric.com/WaysToSave)

### BD OF ED SWEDESORO WOOLWICH

Account number: 5500 8381 398

Your service address: KINGSHWY

SWEDESORO NJ 08085

Bill issue date: May 27, 2020

### Summary of your charges

Balance from your last bill	\$2.84-
Changes to your electric balance	\$24.47
Changes to Plymouth Rock balance	\$24.47-
Balance forward as of May 27, 2020	\$2.84-
New electric charges	\$145.04
New Plymouth Rock supply charges	\$20.24
<b>Total amount due by Jun 17, 2020</b>	<b>\$162.44</b>

Find helpful storm preparation and power outage information at [atlanticcityelectric.com](http://atlanticcityelectric.com)

Si recibe un aviso de suspensión, puede solicitar una copia de ese aviso en español, llamando al departamento de atención al cliente, lunes a viernes de las 7 am a las 7 pm, a 800-642-3780.

For information about regulatory rate reviews, public hearings, and other public processes, visit [atlanticcityelectric.com/PublicPostings](http://atlanticcityelectric.com/PublicPostings).

### How to contact us

Customer service (Mon-Fri, 7am - 7pm)

TTY English

TTY Spanish

Electric emergencies & outages (24 hours)

¿Problemas con la factura?

Visit [atlanticcityelectric.com](http://atlanticcityelectric.com)

1-800-642-3780

1-800-852-7897

1-866-658-7714

1-800-833-7476

1-800-642-3780

1008650-0016741-000001 of 000004-C17-d1-1051-08650

**BD OF ED SWEDESBORO WOOLWICH**  
**Account number: 5500 8381 398**

Your electric bill for the period  
**April 25, 2020 to May 22, 2020**

**Details of your Electric Charges**

Street and Private Lighting - service number 0550 0838 1398 7000 2759 65  
 Electricity you used this period

Lamp size	Quantity	Total use
250S FH	1	79
100W SDS	1	63
150W S	3	135
250W S	2	158
<b>Total</b>	<b>7</b>	<b>435</b>

**Delivery Charges:** These charges reflect the cost of bringing electricity to you.  
 Current charges for 28 days, **winter rates in effect.**

Type of charge	How we calculate this charge	Amount(\$)
Distribution Charge	1 X \$18.9200000	18.92
Distribution Charge	1 X \$29.0100000	29.01
Distribution Charge	3 X \$16.0433333	48.13
Distribution Charge	2 X \$23.1100000	46.22
Market Transition Tax	435 kWh X \$0.0010345 per kWh	0.45
Transition Bond Charge	435 kWh X \$0.0023908 per kWh	1.04
Non-Utility Generation Charge	435 kWh X \$0.0122529 per kWh	5.33
Societal Benefits Charge	435 kWh X \$0.0058391 per kWh	2.54
RGGI Energy Efficiency	435 kWh X \$0.0003448 per kWh	0.15
EDIT Credit 5 Yr - kWh	435 kWh X \$0.0197931 - per kWh	8.61
Zero Emission Certif (ZEC) Charge	435 kWh X \$0.0042759 per kWh	1.86
<b>Total Electric Delivery Charges</b>		<b>145.04</b>

**Supply Charges:** These charges reflect the cost of producing electricity for you.  
 You can compare this part of your bill to offers from competitive suppliers. The class average annual price to compare is 5.38 cents per kWh.

**Total Electric Charges - Street and Private Lighting 145.04**

<b>Electric Summary</b>	
Balance from your last bill	\$27.31-
Transferred Balance	\$24.47
<b>Changes to electric balance</b>	<b>\$24.47</b>
Electric Charges (Street and Private Lighting)	\$145.04
<b>New electric charges</b>	<b>\$145.04</b>
<b>Total amount due by Jun 17, 2020</b>	<b>\$142.20</b>

Transferred Balance: Refers to revenue transferred to or from your account(s).

**BD OF ED SWEDESBORO WOOLWICH**

**Account number: 5500 8381 398**

Your electric bill for the period  
**April 25, 2020 to May 22, 2020**



**Plymouth Rock electric supply charges**

**Service number 0550 0838 1398 7000 2759 65**

Your electricity is supplied by Plymouth Rock Energy, LLC. If you have any questions about your electric supply charges, call Plymouth Rock Energy, LLC at 1-855-327-6937.

Plymouth Rock Energy, LLC account number: 0550083813987000275965

Billing period: Apr 25, 2020 to May 22, 2020 (28 days)

Type of service: Street and Private Lighting

Customer Charges:20.24

\$20.24  
 Amount(\$)  
**20.24**

**Plymouth Rock electric charges**

<b>Plymouth Rock Electric Supply Summary</b>	
<b>Balance from your last bill</b>	<b>\$24.47</b>
Transferred Balance	\$24.47--
<b>Changes to Plymouth Rock balance</b>	<b>\$24.47--</b>
Total Current Charges	\$20.24
<b>New Plymouth Rock electric supply charges</b>	<b>\$20.24</b>
<b>Total amount due by Jun 17, 2020</b>	<b>\$20.24</b>
Transferred Balance: Refers to revenue transferred to or from your account(s).	



An Exelon Company

05 00000008 200007793



Your electric bill - May 2020  
for the period April 7, 2020 to May 5, 2020

# WAYS TO SAVE: FIND TIPS AND PROGRAMS THAT HELP

Learn more at [atlanticcityelectric.com/WaysToSave](http://atlanticcityelectric.com/WaysToSave)

## BD OF ED SWEDESORO WOOLWICH

**Account number:** 5500 8380 523

**Your service address:** 1815 KINGS HWY  
SWEDESORO NJ 08085

**Bill issue date:** May 8, 2020

### How to contact us

Customer service (Mon-Fri, 7am - 7pm)

TTY English

TTY Spanish

Electric emergencies & outages (24 hours)

¿Problemas con la factura?

Visit [atlanticcityelectric.com](http://atlanticcityelectric.com)

1-800-642-3780

1-800-852-7897

1-866-658-7714

1-800-833-7476

1-800-642-3780

### Summary of your charges

Balance from your last bill	\$22.53
Your payment(s) - thank you	\$22.53-
Balance forward as of May 8, 2020	\$0.00
New electric charges	\$10.06
New ECPGNJ supply charges	\$0.47
<b>Total amount due by May 29, 2020</b>	<b>\$10.53</b>

Find helpful storm preparation and power outage information at [atlanticcityelectric.com](http://atlanticcityelectric.com)

Si recibe un aviso de suspensión, puede solicitar una copia de ese aviso en español, llamando al departamento de atención al cliente, lunes a viernes de las 7 am a las 7 pm, a 800-642-3780.

For information about regulatory rate reviews, public hearings, and other public processes, visit [atlanticcityelectric.com/PublicPostings](http://atlanticcityelectric.com/PublicPostings).

1007843-0015390-0000001 of 0000004-C17-d1-1035-07843

**BD OF ED SWEDSBORO WOOLWICH**  
**Account number: 5500 8380 523**

Your electric bill for the period  
**April 7, 2020 to May 5, 2020**

**Details of your Electric Charges**

Monthly General Service Secondary - service number 0550 0838 0523 7000 1135 53  
 Electricity you used this period

Meter Number	Current Reading	Previous Reading	Difference	Multiplier	Total Use
1ND356781779	May 5 000877 (actual)	Apr 7 000871 (actual)	6	1	6
Demand (kW)	0.010 (actual)			1	0.01

Load Factor: 86.21%

Your next meter reading is scheduled for June 5, 2020

Delivery Charges: These charges reflect the cost of bringing electricity to you.  
 Current charges for 29 days, **winter rates in effect.**  
 Capacity/Transmission Peak Load Contribution 0.01 / 0.01

Type of charge	How we calculate this charge	Amount(\$)
Customer Charge		9.63
Distribution Charge	6 kWh X \$0.0516667 per kWh	0.31
Market Transition Tax	6 kWh X \$0.0016667 per kWh	0.01
Transition Bond Charge	6 kWh X \$0.0016667 per kWh	0.01
Non-Utility Generation Charge	6 kWh X \$0.0116667 per kWh	0.07
Societal Benefits Charge	6 kWh X \$0.0050000 per kWh	0.03
EDIT Credit 5 Yr - kWh	6 kWh X \$0.0050000- per kWh	0.03-
Zero Emission Certif (ZEC) Charge	6 kWh X \$0.0050000 per kWh	0.03
<b>Total Electric Delivery Charges</b>		<b>10.06</b>

Supply Charges: These charges reflect the cost of producing electricity for you.  
 You can compare this part of your bill to offers from competitive suppliers. The class average annual price to compare is 9.17 cents per kWh.

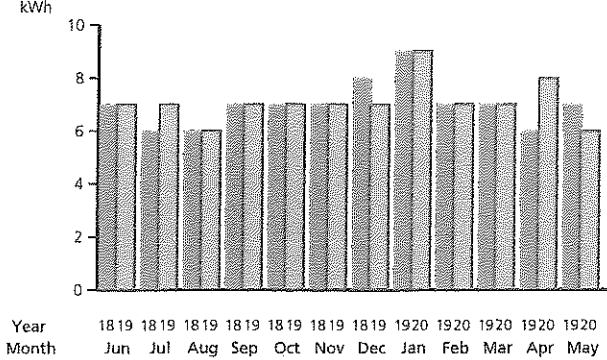
<b>Electric Summary</b>	
Balance from your last bill	\$21.35
Payment Apr 22	\$21.35-
<b>Total Payments</b>	<b>\$21.35-</b>
Electric Charges (Monthly General Service Secondary)	\$10.06
<b>New electric charges</b>	<b>\$10.06</b>
<b>Total amount due by</b>	<b>\$10.06</b>
<b>May 29, 2020</b>	



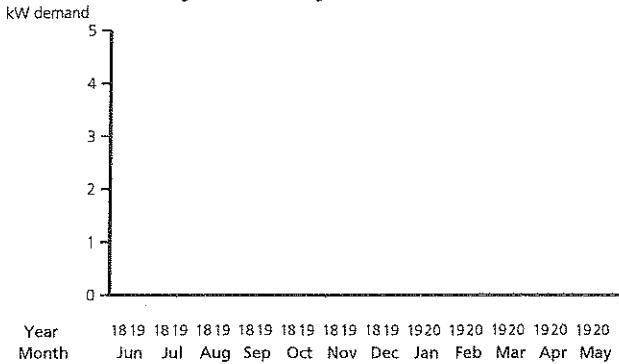
Total Electric Charges - Monthly General Service Secondary **10.06**

**Your monthly Electricity use in kWh**

Daily temperature averages: May 2019: 58° F May 2020: 53° F



**Your monthly Electricity use in kW demand**



**ECPGNJ electric supply charges**

**Service number 0550 0838 0523 7000 1135 53**

Your electricity is supplied by East Coast Power & Gas NJ, LLC. If you have any questions about your electric supply charges, call East Coast Power & Gas NJ, LLC at 1-800-545-9155.

East Coast Power & Gas NJ, LLC account number: 0550083805237000113553

Billing period: Apr 7, 2020 to May 5, 2020 (29 days)

Type of service: Monthly General Service Secondary

THANK YOU FOR USING EAST COAST POWER GAS

ENERGY CHARGE 6KH@0.078200

\$0.00

\$0.47

Amount(\$)

**0.47**

ECPGNJ electric charges

**ECPGNJ Electric Supply Summary**

<b>Balance from your last bill</b>	<b>\$1.18</b>
Payment Apr 22	\$1.18-
<b>Total Payments</b>	<b>\$1.18-</b>
Total Current Charges	\$0.47
<b>New ECPGNJ electric supply charges</b>	<b>\$0.47</b>
<b>Total amount due by May 29, 2020</b>	<b>\$0.47</b>



An Exelon Company

Your electric bill - May 2020  
for the period April 3, 2020 to May 4, 2020

# WAYS TO SAVE: FIND TIPS AND PROGRAMS THAT HELP

Learn more at [atlanticcityelectric.com/WaysToSave](http://atlanticcityelectric.com/WaysToSave)

## BD OF ED SWEDESORO WOOLWICH

Account number: 5500 8380 952

Your service address: AUBURN RD  
SWEDESORO NJ 08085

Bill issue date: May 7, 2020

### Summary of your charges

Balance from your last bill	\$10,902.85
Your payment(s) - thank you	\$10,902.85
Balance forward as of May 7, 2020	\$0.00
New electric charges	\$3,031.96
New ECPGNJ supply charges	\$1,545.23
<b>Total amount due by May 28, 2020</b>	<b>\$4,577.19</b>

Find helpful storm preparation and power outage information at [atlanticcityelectric.com](http://atlanticcityelectric.com)

Si recibe un aviso de suspensión, puede solicitar una copia de ese aviso en español, llamando al departamento de atención al cliente, lunes a viernes de las 7 am a las 7 pm, a 800-642-3780.

For information about regulatory rate reviews, public hearings, and other public processes, visit [atlanticcityelectric.com/PublicPostings](http://atlanticcityelectric.com/PublicPostings).

**How to contact us**  
Customer service (Mon-Fri, 7am - 7pm)  
TTY English 1-800-642-3780  
TTY Spanish 1-800-852-7897  
Electric emergencies & outages (24 hours) 1-866-658-7714  
¿Problemas con la factura? 1-800-833-7476  
Visit [atlanticcityelectric.com](http://atlanticcityelectric.com) 1-800-642-3780

**BD OF ED SWEDESBORO WOOLWICH**  
 Account number: 5500 8380 952

Your electric bill for the period  
**April 3, 2020 to May 4, 2020**

**Details of your Electric Charges**

Annual General Service Secondary - service number 0550 0838 0952 7000 3698 65  
 Electricity you used this period

Meter Number	Current Reading	Previous Reading	Difference	Multiplier	Total Use
99A075767014	May 4 068245 (actual)	Apr 3 067998 (actual)	247	80	19760
Demand (kW)	2.490 (actual)			80	199.20

Minimum kW demand 159.36  
 Total kW Billing demand 199.20  
 Load Factor: 12.92%

Your next meter reading is scheduled for June 4, 2020

**Delivery Charges:** These charges reflect the cost of bringing electricity to you.  
 Current charges for 32 days, **winter rates in effect.**  
 Capacity/Transmission Peak Load Contribution 110.14 / 108.92

Type of charge	How we calculate this charge	Amount(\$)
Customer Charge		206.10
Distribution Charge	199.20 kW X \$11.8719880 per kW	2,364.90
Market Transition Tax	19760 kWh X \$0.0010278 per kWh	20.31
Transition Bond Charge	19760 kWh X \$0.0023998 per kWh	47.42
Non-Utility Generation Charge	19760 kWh X \$0.0122541 per kWh	242.14
Societal Benefits Charge	19760 kWh X \$0.0058320 per kWh	115.24
RGGI Energy Efficiency	19760 kWh X \$0.0003340 per kWh	6.60
EDIT Credit 5 Yr - kWh	19760 kWh X \$0.0027849- per kWh	55.03--
Zero Emission Certif (ZEC) Charge	19760 kWh X \$0.0042652 per kWh	84.28
<b>Total Electric Delivery Charges</b>		<b>3,031.96</b>

<b>Electric Summary</b>	
Balance from your last bill	\$6,023.17
Payment Apr 22	\$6,023.17-
<b>Total Payments</b>	<b>\$6,023.17-</b>
Electric Charges (Annual General Service Secondary)	\$3,031.96
<b>New electric charges</b>	<b>\$3,031.96</b>
<b>Total amount due by May 28, 2020</b>	<b>\$3,031.96</b>

**BD OF ED SWEDESBORO WOOLWICH**  
**Account number: 5500 8380 952**

Your electric bill for the period  
**April 3, 2020 to May 4, 2020**

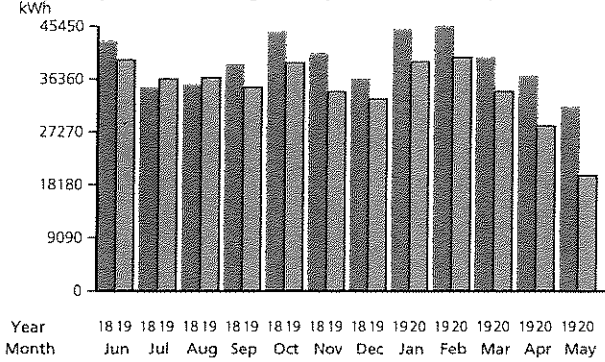


**Supply Charges:** These charges reflect the cost of producing electricity for you. You can compare this part of your bill to offers from competitive suppliers. The class average annual price to compare is 8.34 cents per kWh.

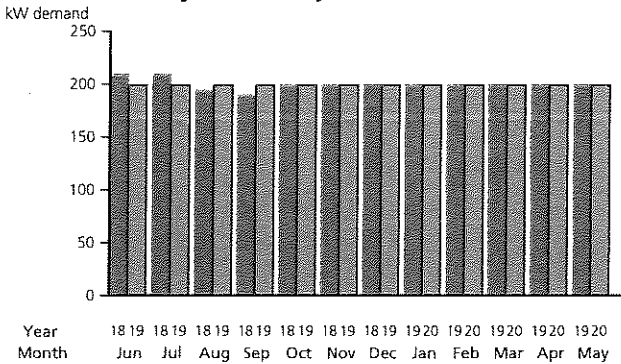
**Total Electric Charges - Annual General Service Secondary 3,031.96**

*Your monthly Electricity use in kWh*

**Daily temperature averages:** May 2019: 58° F May 2020: 53° F



*Your monthly Electricity use in kW demand*



**ECPGNJ electric supply charges**

**Service number 0550 0838 0952 7000 3698 65**

Your electricity is supplied by East Coast Power & Gas NJ, LLC. If you have any questions about your electric supply charges, call East Coast Power & Gas NJ, LLC at 1-800-545-9155.

East Coast Power & Gas NJ, LLC account number: 0550083809527000369865

Billing period: Apr 3, 2020 to May 4, 2020 (32 days)

Type of service: Annual General Service Secondary

THANK YOU FOR USING EAST COAST POWER GAS

ENERGY CHARGE 19760KH@0.078200

ECPGNJ electric charges

\$0.00  
 \$1,545.23  
 Amount(\$)  
**1,545.23**

<b>ECPGNJ Electric Supply Summary</b>	
Balance from your last bill	<b>\$4,879.68</b>
Payment Apr 22	\$4,879.68-
<b>Total Payments</b>	<b>\$4,879.68-</b>
Total Current Charges	\$1,545.23
<b>New ECPGNJ electric supply charges</b>	<b>\$1,545.23</b>
<b>Total amount due by May 28, 2020</b>	<b>\$1,545.23</b>

1007569-0000189-00000003 of 0000004-C17-d1-1034-07569



An Exelon Company

Your electric bill - May 2020  
for the period April 28, 2020 to May 26, 2020



# WAYS TO SAVE: FIND TIPS AND PROGRAMS THAT HELP

Learn more at [atlanticcityelectric.com/WaysToSave](http://atlanticcityelectric.com/WaysToSave)

## SWEDESBORO WOOLWICH BD OF ED

Account number: 5500 3441 890

Your service address: 2ND ST  
SWEDESBORO NJ 08085

Bill issue date: May 28, 2020

## Summary of your charges

Balance from your last bill	\$437.45
Your payment(s) - thank you	\$437.45-
Balance forward as of May 28, 2020	\$0.00
New electric charges	\$335.66
New Plymouth Rock supply charges	\$52.76
<b>Total amount due by Jun 18, 2020</b>	<b>\$388.42</b>

Find helpful storm preparation and power outage information at [atlanticcityelectric.com](http://atlanticcityelectric.com)

Si recibe un aviso de suspensión, puede solicitar una copia de ese aviso en español, llamando al departamento de atención al cliente, lunes a viernes de las 7 am a las 7 pm, a 800-642-3780.

For information about regulatory rate reviews, public hearings, and other public processes, visit [atlanticcityelectric.com/PublicPostings](http://atlanticcityelectric.com/PublicPostings).

## How to contact us

Customer service (Mon-Fri, 7am - 7pm)

TTY English

TTY Spanish

Electric emergencies & outages (24 hours)

¿Problemas con la factura?

Visit [atlanticcityelectric.com](http://atlanticcityelectric.com)

- 1-800-642-3780
- 1-800-852-7897
- 1-866-658-7714
- 1-800-833-7476
- 1-800-642-3780

**SWEDESORO WOOLWICH BD OF ED**  
**Account number: 5500 3441 890**

Your electric bill for the period  
**April 28, 2020 to May 26, 2020**

1009369-0018089-0000002 of 0000004-C17-d1-1052-09369

**Details of your Electric Charges**

Street and Private Lighting - service number 0550 0344 1890 7000 7265 41  
 Electricity you used this period

<u>Lamp size</u>	<u>Quantity</u>	<u>Total use</u>
400S FM	2	252
400S UFM	5	630
400S UFM2	1	252
<b>Total</b>	<b>8</b>	<b>1,134</b>

**Delivery Charges:** These charges reflect the cost of bringing electricity to you.  
 Current charges for 29 days, **winter rates in effect.**

<u>Type of charge</u>	<u>How we calculate this charge</u>	<u>Amount(\$)</u>
Distribution Charge	2 X \$30.80000000	61.60
Distribution Charge	5 X \$38.12600000	190.63
Distribution Charge	1 X \$76.25000000	76.25
Market Transition Tax	1134 kWh X \$0.0010318 per kWh	1.17
Transition Bond Charge Non-Utility Generation Charge	1134 kWh X \$0.0023986 per kWh	2.72
Societal Benefits Charge	1134 kWh X \$0.0122575 per kWh	13.90
RGGI Energy Efficiency	1134 kWh X \$0.0058377 per kWh	6.62
EDIT Credit 5 Yr - kWh Zero Emission Certif (ZEC) Charge	1134 kWh X \$0.0197972- per kWh	0.38
	1134 kWh X \$0.0042681 per kWh	22.45-
<b>Total Electric Delivery Charges</b>		<b>335.66</b>

**Supply Charges:** These charges reflect the cost of producing electricity for you.  
 You can compare this part of your bill to offers from competitive suppliers. The class  
 average annual price to compare is 5.38 cents per kWh.

**Total Electric Charges - Street and Private Lighting** **335.66**

**Plymouth Rock electric supply charges**  
**Service number 0550 0344 1890 7000 7265 41**

<b>Electric Summary</b>	
Balance from your last bill	\$371.34
Payment May 12	\$371.34-
<b>Total Payments</b>	<b>\$371.34-</b>
Electric Charges (Street and Private Lighting)	\$335.66
<b>New electric charges</b>	<b>\$335.66</b>
<b>Total amount due by Jun 18, 2020</b>	<b>\$335.66</b>

<b>Plymouth Rock Electric Supply Summary</b>	
Balance from your last bill	\$66.11

**SWEDESBORO WOOLWICH BD OF ED**

**Account number: 5500 3441 890**

18 00000008 200008270

Your electric bill for the period  
**April 28, 2020 to May 26, 2020**



Your electricity is supplied by Plymouth Rock Energy, LLC. If you have any questions about your electric supply charges, call Plymouth Rock Energy, LLC at 1-855-327-6937.

Plymouth Rock Energy, LLC account number: 0550034418907000726541

Billing period: Apr 28, 2020 to May 26, 2020 (29 days)

Type of service: Street and Private Lighting

Customer Charges:52.76

\$52.76  
Amount(\$)  
**52.76**

Plymouth Rock electric charges

<b>Electric Summary Continued</b>	
Payment May 12	\$66.11-
<b>Total Payments</b>	<b>\$66.11-</b>
Total Current Charges	\$52.76
<b>New Plymouth Rock electric supply charges</b>	<b>\$52.76</b>
<b>Total amount due by Jun 18, 2020</b>	<b>\$52.76</b>

1003369-0018090-00000003 of 00000004-C17-D1-1052-03369



An Exelon Company

Your electric bill - May 2020  
for the period April 2, 2020 to May 1, 2020



# WAYS TO SAVE: FIND TIPS AND PROGRAMS THAT HELP

Learn more at [atlanticcityelectric.com/WaysToSave](http://atlanticcityelectric.com/WaysToSave)

## SWEDESBORO WOOLWICH BD OF ED

Account number: 5500 3462 334

Your service address: 601 AUBURN AVE  
SWEDESBORO NJ 08085

Bill issue date: May 6, 2020

### Summary of your charges

Balance from your last bill	\$82.74
Your payment(s) - thank you	\$82.74
Balance forward as of May 6, 2020	\$0.00
New electric charges	\$22.14
New ECPGNJ supply charges	\$12.12
<b>Total amount due by May 27, 2020</b>	<b>\$34.26</b>

Find helpful storm preparation and power outage information at [atlanticcityelectric.com](http://atlanticcityelectric.com)

Si recibe un aviso de suspensión, puede solicitar una copia de ese aviso en español, llamando al departamento de atención al cliente, lunes a viernes de las 7 am a las 7 pm, a 800-642-3780.

For information about regulatory rate reviews, public hearings, and other public processes, visit [atlanticcityelectric.com/PublicPostings](http://atlanticcityelectric.com/PublicPostings).

### How to contact us

Customer service (Mon-Fri, 7am - 7pm)

TTY English

TTY Spanish

Electric emergencies & outages (24 hours)

¿Problemas con la factura?

Visit [atlanticcityelectric.com](http://atlanticcityelectric.com)

- 1-800-642-3780
- 1-800-852-7897
- 1-866-658-7714
- 1-800-833-7476
- 1-800-642-3780

**SWEDSBORO WOOLMICH BD OF ED**  
**Account number: 5500 3462 334**

Your electric bill for the period  
**April 2, 2020 to May 1, 2020**

**Details of your Electric Charges**

Monthly General Service Secondary - service number 0550 0346 2334 7000 4725 42  
 Electricity you used this period

Meter Number Energy Type	Current Reading	Previous Reading	Difference	Multiplier	Total Use
99F105301562 Use (kWh)	May 1 078012 (actual)	Apr 2 077857 (actual)	155	1	155
Demand (kW)	0.410 (actual)			1	0.41

Load Factor: 52.51%

Your next meter reading is scheduled for June 3, 2020

Delivery Charges: These charges reflect the cost of bringing electricity to you.  
 Current charges for 30 days, **winter rates in effect.**  
 Capacity/Transmission Peak Load Contribution 0.34 / 0.37

Type of charge	How we calculate this charge	Amount(\$)
Customer Charge		9.96
Distribution Charge	0.40 kW X \$2.2000000 per kW	0.88
Distribution Charge	155 kWh X \$0.0515484 per kWh	7.99
Market Transition Tax	155 kWh X \$0.0010323 per kWh	0.16
Transition Bond Charge	155 kWh X \$0.0023871 per kWh	0.37
Non-Utility Generation Charge	155 kWh X \$0.0122581 per kWh	1.90
Societal Benefits Charge	155 kWh X \$0.0058710 per kWh	0.91
RG&I Energy Efficiency	155 kWh X \$0.0003226 per kWh	0.05
EDIT Credit 5 Yr - kWh	155 kWh X \$0.0047742- per kWh	0.74--
Zero Emission Certif (ZEC) Charge	155 kWh X \$0.0042581 per kWh	0.66
<b>Total Electric Delivery Charges</b>		<b>22.14</b>

<b>Electric Summary</b>	
Balance from your last bill	\$51.15
Payment Apr 22	\$51.15--
<b>Total Payments</b>	<b>\$51.15--</b>
Electric Charges (Monthly General Service Secondary)	\$22.14
<b>New electric charges</b>	<b>\$22.14</b>
<b>Total amount due by May 27, 2020</b>	<b>\$22.14</b>

**SWEDESBORO WOOLWICH BD OF ED**  
**Account number: 5500 3462 334**

Your electric bill for the period  
**April 2, 2020 to May 1, 2020**

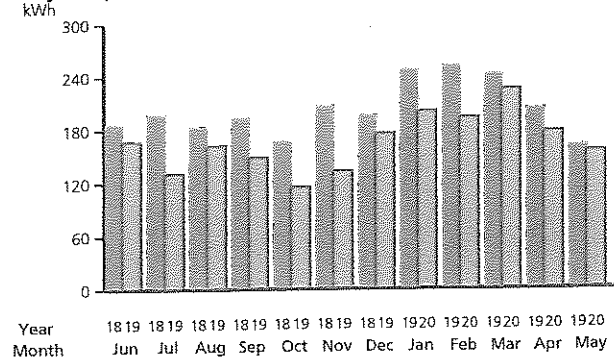


Supply Charges: These charges reflect the cost of producing electricity for you. You can compare this part of your bill to offers from competitive suppliers. The class average annual price to compare is 9.17 cents per kWh.

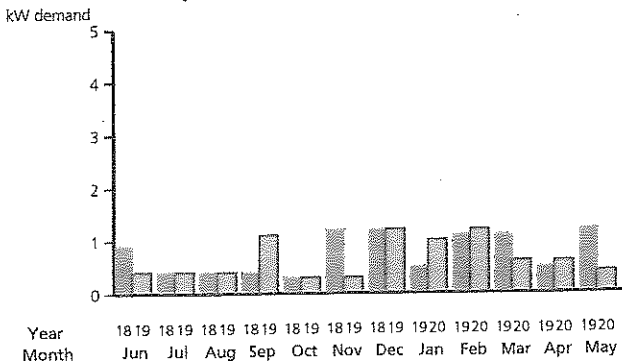
Total Electric Charges - Monthly General Service Secondary **22.14**

**Your monthly Electricity use in kWh**

Daily temperature averages: May 2019: 58° F May 2020: 52° F



**Your monthly Electricity use in kW demand**



**ECPGNI electric supply charges**

Service number **0550 0346 2334 7000 4725 42**

Your electricity is supplied by East Coast Power & Gas NJ, LLC. If you have any questions about your electric supply charges, call East Coast Power & Gas NJ, LLC at 1-800-545-9155.

East Coast Power & Gas NJ, LLC account number: 0550034623347000472542

Billing period: Apr 2, 2020 to May 1, 2020 (30 days)

Type of service: Monthly General Service Secondary

ENERGY CHARGE 155KH@0.078200

\$12.12  
 Amount(\$)  
**12.12**

ECPGNI electric charges

<b>ECPGNI Electric Supply Summary</b>	
<b>Balance from your last bill</b>	<b>\$31.59</b>
Payment Apr 22	\$31.59-
<b>Total Payments</b>	<b>\$31.59-</b>
Total Current Charges	\$12.12
<b>New ECPGNI electric supply charges</b>	<b>\$12.12</b>
<b>Total amount due by May 27, 2020</b>	<b>\$12.12</b>

1008013-001-8664-000005 of 0000004-C-17-D-1-1000-00013



An Exelon Company

Your electric bill - May 2020  
for the period April 30, 2020 to May 28, 2020



# WAYS TO SAVE: FIND TIPS AND PROGRAMS THAT HELP

Learn more at [atlanticcityelectric.com/WaysToSave](http://atlanticcityelectric.com/WaysToSave)

## SWEDESBORO WOOLWICH BD OF ED

Account number: 5500 3440 991

Your service address: PEDRICKTOWN & AUBURN  
SWEDESBORO NJ 08085

Bill issue date: Jun 1, 2020

### Summary of your charges

Balance from your last bill	\$7,186.53
Your payment(s) - thank you	\$7,186.53-
Balance forward as of Jun 1, 2020	\$0.00
New electric charges	\$5,119.42
New ECPGNJ supply charges	\$1,830.97
<b>Total amount due by Jun 22, 2020</b>	<b>\$6,950.39</b>

Find helpful storm preparation and power outage information at [atlanticcityelectric.com](http://atlanticcityelectric.com)

Si recibe un aviso de suspensión, puede solicitar una copia de ese aviso en español, llamando al departamento de atención al cliente, lunes a viernes de las 7 am a las 7 pm, a 800-642-3780.

For information about regulatory rate reviews, public hearings, and other public processes, visit [atlanticcityelectric.com/PublicPostings](http://atlanticcityelectric.com/PublicPostings).

### How to contact us

Customer service (Mon-Fri, 7am - 7pm)

TTY English

TTY Spanish

Electric emergencies & outages (24 hours)

¿Problemas con la factura?

Visit [atlanticcityelectric.com](http://atlanticcityelectric.com)

1-800-642-3780

1-800-852-7897

1-866-658-7714

1-800-833-7476

1-800-642-3780

**SWEDSBORO WOOLWICH BD OF ED**  
**Account number: 5500 3440 991**

Your electric bill for the period  
**April 30, 2020 to May 28, 2020**

**Details of your Electric Charges**

Annual General Service Secondary - service number 0550 0344 0991 7001 1457 52  
 Electricity you used this period

Meter Number Energy Type	Current Reading May 28	Previous Reading Apr 30	Multiplier	Total Use	Total for Billing
KZA014232044 Use (kWh)	010529 (actual)	010451 (actual)	300	23400	23414
Demand (kW)	0.329 (actual)		300	98.70	98.82
Demand (kVAR)	0.260 (actual)		300	78.00	78.12

Minimum kW demand 404.21  
 Total kW Billing demand 404.21  
 Load Factor: 34.04% Power Factor: 78.44%

The "Total for Billing" column represents data from Interval pulses, which is utilized for billing purposes.

Your next meter reading is scheduled for June 30, 2020

Delivery Charges: These charges reflect the cost of bringing electricity to you.  
 Current charges for 29 days, winter rates in effect.  
 Capacity/Transmission Peak Load Contribution 216.72 / 98.22

Type of charge	How we calculate this charge	Amount(\$)
Customer Charge		186.78
Distribution Charge	404.21 kW X \$10.7589904 per kW	4,348.87
Reactive Demand Charge		37.56
Market Transition Tax	23414 kWh X \$0.0010280 per kWh	24.07
Transition Bond Charge	23414 kWh X \$0.0023999 per kWh	56.19
Non-Utility Generation Charge	23414 kWh X \$0.0122542 per kWh	286.92
Societal Benefits Charge	23414 kWh X \$0.0058324 per kWh	136.56
RGGI Energy Efficiency	23414 kWh X \$0.0003340 per kWh	7.82

Electric Summary	
Balance from your last bill	\$5,268.13
Payment May 12	\$5,268.13
<b>Total Payments</b>	<b>\$5,268.13</b>
Electric Charges (Annual General Service Secondary)	\$5,119.42
<b>New electric charges</b>	<b>\$5,119.42</b>
<b>Total amount due by Jun 22, 2020</b>	<b>\$5,119.42</b>

**SWEDESBORO WOOLWICH BD OF ED**

Account number: 5500 3440 991

Your electric bill for the period  
**April 30, 2020 to May 28, 2020**



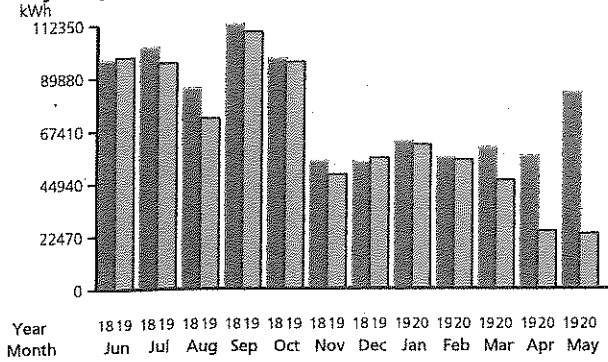
EDIT Credit 5 Yr - kWh	23414 kWh X \$0.0027851- per kWh	65.21-
Zero Emission Certif (ZEC)		
Charge	23414 kWh X \$0.0042650 per kWh	99.86
<b>Total Electric Delivery Charges</b>		<b>5,119.42</b>

**Supply Charges:** These charges reflect the cost of producing electricity for you. You can compare this part of your bill to offers from competitive suppliers. The class average annual price to compare is 8.27 cents per kWh.

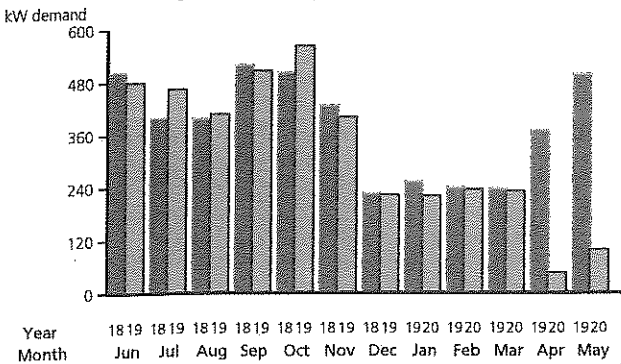
**Total Electric Charges - Annual General Service Secondary** **5,119.42**

**Your monthly Electricity use in kWh**

Daily temperature averages: May 2019: 64° F May 2020: 59° F



**Your monthly Electricity use in kW demand**



**ECPGNJ electric supply charges**

Service number 0550 0344 0991 7001 1457 52

Your electricity is supplied by East Coast Power & Gas NJ, LLC. If you have any questions about your electric supply charges, call East Coast Power & Gas NJ, LLC at 1-800-545-9155.

East Coast Power & Gas NJ, LLC account number: 0550034409917001145752

Billing period: Apr 30, 2020 to May 28, 2020 (29 days)

Type of service: Annual General Service Secondary

THANK YOU FOR USING EAST COAST POWER GAS

ENERGY CHARGE 23414KH@0.078200

ECPGNJ electric charges

\$0.00  
 \$1,830.97  
 Amount(\$)  
**1,830.97**

<b>ECPGNJ Electric Supply Summary</b>	
Balance from your last bill	<b>\$1,918.40</b>
Payment May 12	\$1,918.40-
<b>Total Payments</b>	<b>\$1,918.40-</b>
Total Current Charges	\$1,830.97
<b>New ECPGNJ electric supply charges</b>	<b>\$1,830.97</b>
<b>Total amount due by Jun 22, 2020</b>	<b>\$1,830.97</b>

1007527-0014887-00000003 of 0000004-C-17-d1-1055-07527



An Exelon Company

Your electric bill - May 2020  
for the period April 30, 2020 to May 28, 2020



# WAYS TO SAVE: FIND TIPS AND PROGRAMS THAT HELP

Learn more at [atlanticcityelectric.com/WaysToSave](http://atlanticcityelectric.com/WaysToSave)

## SWEDESBORO WOOLWICH BD OF ED

Account number: 5500 3441 635

Your service address: 15 FREDRICK BLVD  
SWEDESBORO NJ 08085

Bill Issue date: Jun 1, 2020

## How to contact us

Customer service (Mon-Fri, 7am - 7pm)

TTY English

TTY Spanish

Electric emergencies & outages (24 hours)

¿Problemas con la factura?

Visit [atlanticcityelectric.com](http://atlanticcityelectric.com)

1-800-642-3780  
1-800-852-7897  
1-866-658-7714  
1-800-833-7476  
1-800-642-3780

## Summary of your charges

Balance from your last bill	\$4,606.72
Your payment(s) - thank you	\$4,606.72 -
Balance forward as of Jun 1, 2020	\$0.00
New electric charges	\$3,069.54
New ECPGNJ supply charges	\$1,388.28
<b>Total amount due by Jun 22, 2020</b>	<b>\$4,457.82</b>

Find helpful storm preparation and power outage information at [atlanticcityelectric.com](http://atlanticcityelectric.com)

Si recibe un aviso de suspensión, puede solicitar una copia de ese aviso en español, llamando al departamento de atención al cliente, lunes a viernes de las 7 am a las 7 pm, a 800-642-3780.

For information about regulatory rate reviews, public hearings, and other public processes, visit [atlanticcityelectric.com/PublicPostings](http://atlanticcityelectric.com/PublicPostings).

**SWEDSBORO WOOLWICH BD OF ED**

Account number: 5500 3441 635

Your electric bill for the period  
**April 30, 2020 to May 28, 2020**

**Details of your Electric Charges**

Annual General Service Secondary - service number 0550 0344 1635 7001 2672 52  
 Electricity you used this period

Meter Number Energy Type	Current Reading	Previous Reading	Multiplier	Total Use	Total for Billing
KZA019605861 Use (kWh)	May 28 007957 (actual)	Apr 30 007869 (actual)	200	17600	17753
Demand (kW)	0.468 (actual)		200	93.60	93.60
Demand (kVAR)	0.250 (actual)		200	50.00	49.92

Minimum kW demand **228.00**  
 Total kW Billing demand **228.00**

Load Factor: 27.25% Power Factor: 88.23%

The "Total for Billing" column represents data from Interval pulses, which is utilized for billing purposes.

Your next meter reading is scheduled for June 30, 2020

Delivery Charges: These charges reflect the cost of bringing electricity to you.  
 Current charges for 29 days, winter rates in effect.  
 Capacity/Transmission Peak Load Contribution 149.65 / 71.52

Type of charge	How we calculate this charge	Amount(\$)
Customer Charge		186.78
Distribution Charge	228.00 kW X \$10.7589912 per kW	2,453.05
Reactive Demand Charge		15.56
Market Transition Tax	17753 kWh X \$0.0010280 per kWh	18.25
Transition Bond Charge	17753 kWh X \$0.0024002 per kWh	42.61
Non-Utility Generation Charge	17753 kWh X \$0.0122543 per kWh	217.55
Societal Benefits Charge	17753 kWh X \$0.0058317 per kWh	103.53
RGGI Energy Efficiency	17753 kWh X \$0.0003340 per kWh	5.93

Electric Summary	
Balance from your last bill	\$3,169.48
Payment May 12	\$3,169.48--
<b>Total Payments</b>	<b>\$3,169.48--</b>
Electric Charges (Annual General Service Secondary)	\$3,069.54
<b>New electric charges</b>	<b>\$3,069.54</b>
<b>Total amount due by Jun 22, 2020</b>	<b>\$3,069.54</b>

**SWEDESORO WOOLWICH BD OF ED**

Account number: 5500 3441 635

Your electric bill for the period  
**April 30, 2020 to May 28, 2020**



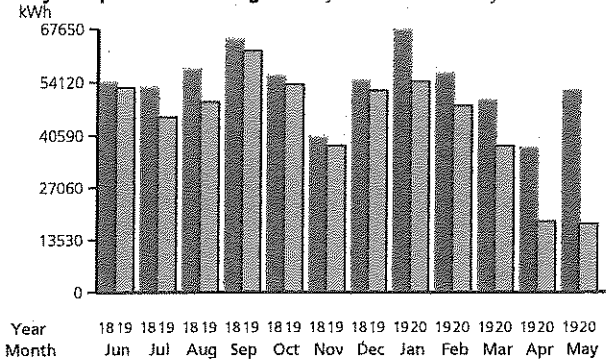
EDIT Credit 5 Yr - kWh	17753 kWh X \$0.0027849- per kWh	49.44-
Zero Emission Certif (ZEC)		
Charge	17753 kWh X \$0.0042652 per kWh	75.72
<b>Total Electric Delivery Charges</b>		<b>3,069.54</b>

Supply Charges: These charges reflect the cost of producing electricity for you. You can compare this part of your bill to offers from competitive suppliers. The class average annual price to compare is 8.27 cents per kWh.

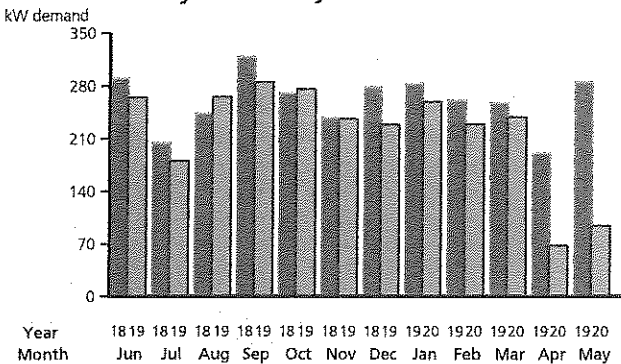
**Total Electric Charges - Annual General Service Secondary 3,069.54**

**Your monthly Electricity use in kWh**

Daily temperature averages: May 2019: 64° F May 2020: 59° F



**Your monthly Electricity use in kW demand**



**ECPGNJ electric supply charges**

Service number 0550 0344 1635 7001 2672 52

Your electricity is supplied by East Coast Power & Gas NJ, LLC. If you have any questions about your electric supply charges, call East Coast Power & Gas NJ, LLC at 1-800-545-9155.

East Coast Power & Gas NJ, LLC account number: 0550034416357001267252

Billing period: Apr 30, 2020 to May 28, 2020 (29 days)

Type of service: Annual General Service Secondary

THANK YOU FOR USING EAST COAST POWER GAS

ENERGY CHARGE 17753KH@0.078200

ECPGNJ electric charges

\$0.00  
\$1,388.28  
Amount(\$)  
**1,388.28**

<b>ECPGNJ Electric Supply Summary</b>	
Balance from your last bill	\$1,437.24
Payment May 12	\$1,437.24-
<b>Total Payments</b>	<b>\$1,437.24-</b>
Total Current Charges	\$1,388.28
<b>New ECPGNJ electric supply charges</b>	<b>\$1,388.28</b>
<b>Total amount due by Jun 22, 2020</b>	<b>\$1,388.28</b>

1007526-0014885-0000003 of 0000004-C-17-01-1055-07526



An Exelon Company

16 00000008 200007462



Your electric bill - May 2020  
for the period April 24, 2020 to May 21, 2020

## WAYS TO SAVE: FIND TIPS AND PROGRAMS THAT HELP

Learn more at [atlanticcityelectric.com/WaysToSave](http://atlanticcityelectric.com/WaysToSave)

### BD OF ED SWEDESORO WOOLWICH

Account number: 5500 8379 814

Your service address: 15 FREDRICK BLVD  
SWEDESORO NJ 08085

Bill issue date: May 27, 2020

### How to contact us

Customer service (Mon-Fri, 7am - 7pm)

TTY English

TTY Spanish

Electric emergencies & outages (24 hours)

¿Problemas con la factura?

Visit [atlanticcityelectric.com](http://atlanticcityelectric.com)

1-800-642-3780  
1-800-852-7897  
1-866-658-7714  
1-800-833-7476  
1-800-642-3780

### Summary of your charges

Balance from your last bill	\$904.60
Your payment(s) - thank you	\$904.60-
Balance forward as of May 27, 2020	\$0.00
New electric charges	\$712.66
New Plymouth Rock supply charges	\$115.33
<b>Total amount due by Jun 17, 2020</b>	<b>\$827.99</b>

Find helpful storm preparation and power outage information at [atlanticcityelectric.com](http://atlanticcityelectric.com)

Si recibe un aviso de suspensión, puede solicitar una copia de ese aviso en español, llamando al departamento de atención al cliente, lunes a viernes de las 7 am a las 7 pm, a 800-642-3780.

For information about regulatory rate reviews, public hearings, and other public processes, visit [atlanticcityelectric.com/PublicPostings](http://atlanticcityelectric.com/PublicPostings).

1008648-0016738-0000001 of 0000004-C17-d1-1051-08648

**BD OF ED SWEDSBORO WOOLWICH**  
**Account number: 5500 8379 814**

Your electric bill for the period  
**April 24, 2020 to May 21, 2020**

**Details of your Electric Charges**

Street and Private Lighting - service number 0550 0837 9814 7001 8302 94  
 Electricity you used this period

Lamp size	Quantity	Total use
400S UB	6	744
400S UB2	7	1735
<b>Total</b>	<b>13</b>	<b>2,479</b>

**Delivery Charges:** These charges reflect the cost of bringing electricity to you.  
 Current charges for 28 days, **winter rates in effect.**

Type of charge	How we calculate this charge	Amount(\$)
Distribution Charge	6 X \$34.8500000	209.10
Distribution Charge	7 X \$69.7014286	487.91
Market Transition Tax	2479 kWh X \$0.0010286 per kWh	2.55
Transition Bond Charge	2479 kWh X \$0.0024002 per kWh	5.95
Non-Utility Generation Charge	2479 kWh X \$0.0122549 per kWh	30.38
Societal Benefits Charge	2479 kWh X \$0.0058290 per kWh	14.45
RGGI Energy Efficiency	2479 kWh X \$0.0003348 per kWh	0.83
EDIT Credit 5 Yr - kWh	2479 kWh X \$0.0197983- per kWh	49.08-
Zero Emission Certif (ZEC) Charge	2479 kWh X \$0.0042638 per kWh	10.57
<b>Total Electric Delivery Charges</b>		<b>712.66</b>

**Supply Charges:** These charges reflect the cost of producing electricity for you.  
 You can compare this part of your bill to offers from competitive suppliers. The class average annual price to compare is 5.38 cents per kWh.

**Total Electric Charges - Street and Private Lighting** **712.66**

**Plymouth Rock electric supply charges**

**Service number 0550 0837 9814 7001 8302 94**

Your electricity is supplied by Plymouth Rock Energy, LLC. If you have any questions about your electric supply charges, call Plymouth Rock Energy, LLC at 1-855-327-6937.

<b>Electric Summary</b>	
Balance from your last bill	\$765.41
Payment May 12	\$765.41-
<b>Total Payments</b>	<b>\$765.41-</b>
Electric Charges (Street and Private Lighting)	\$712.66
<b>New electric charges</b>	<b>\$712.66</b>
<b>Total amount due by Jun 17, 2020</b>	<b>\$712.66</b>

<b>Plymouth Rock Electric Supply Summary</b>	
Balance from your last bill	\$139.19
Payment May 12	\$139.19-
<b>Total Payments</b>	<b>\$139.19-</b>

**BD OF ED SWEDESBORO WOOLWICH**  
Account number: 5500 8379 814

Your electric bill for the period  
**April 24, 2020 to May 21, 2020**



Plymouth Rock Energy, LLC account number: 0550083798147001830294  
Billing period: Apr 24, 2020 to May 21, 2020 (28 days)  
Type of service: Street and Private Lighting  
Customer Charges:115.33

Plymouth Rock electric charges

\$115.33  
Amount(\$)  
**115.33**

<b>Electric Summary Continued</b>	
Total Current Charges	\$115.33
<b>New Plymouth Rock electric supply charges</b>	<b>\$115.33</b>
<b>Total amount due by Jun 17, 2020</b>	<b>\$115.33</b>



An Exelon Company

06 00000008 200007243



Your electric bill - May 2020  
for the period April 7, 2020 to May 6, 2020

# WAYS TO SAVE: FIND TIPS AND PROGRAMS THAT HELP

Learn more at [atlanticcityelectric.com/WaysToSave](http://atlanticcityelectric.com/WaysToSave)

## SWEDSBORO WOOLWICH BD OF ED

**Account number: 5500 3441 205**

**Your service address:** 15 FREDRICK BLVD  
SWEDSBORO NJ 08085

**Bill issue date:** May 11, 2020

### How to contact us

Customer service (Mon-Fri, 7am - 7pm)

TTY English

TTY Spanish

Electric emergencies & outages (24 hours)

¿Problemas con la factura?

Visit [atlanticcityelectric.com](http://atlanticcityelectric.com)

1-800-642-3780  
1-800-852-7897  
1-866-658-7714  
1-800-833-7476  
1-800-642-3780

### Summary of your charges

Balance from your last bill	\$93.59
Your payment(s) - thank you	\$93.59-
Balance forward as of May 11, 2020	\$0.00
New electric charges	\$28.54
New ECPGNJ supply charges	\$19.00
<b>Total amount due by Jun 1, 2020</b>	<b>\$47.54</b>

Find helpful storm preparation and power outage information at [atlanticcityelectric.com](http://atlanticcityelectric.com)

Si recibe un aviso de suspensión, puede solicitar una copia de ese aviso en español, llamando al departamento de atención al cliente, lunes a viernes de las 7 am a las 7 pm, a 800-642-3780.

For information about regulatory rate reviews, public hearings, and other public processes, visit [atlanticcityelectric.com/PublicPostings](http://atlanticcityelectric.com/PublicPostings).

1007263-0014133-0000001 of 0000004-C17-d1-1037-07263

**SWEDESBORO WOOLWICH BD OF ED**  
**Account number: 5500 3441 205**

Your electric bill for the period  
**April 7, 2020 to May 6, 2020**

**Details of your Electric Charges**

Monthly General Service Secondary - service number: 0550 0344 1205 7001 4298 10  
 Electricity you used this period

Meter Number Energy Type	Current Reading	Previous Reading	Difference	Multiplier	Total Use
99F105731107	May 6 025499 (actual)	Apr 7 025256 (actual)	243	1	243
Demand (kW)	0.350 (actual)			1	0.35

Load Factor: 96.43%

Your next meter reading is scheduled for June 8, 2020

Delivery Charges: These charges reflect the cost of bringing electricity to you.  
 Current charges for 30 days, **winter rates in effect.**  
 Capacity/Transmission Peak Load Contribution 0.00 / 0.00

Type of charge	How we calculate this charge	Amount(\$)
Customer Charge		9.96
Distribution Charge	0.40 kW X \$2.2000000 per kW	0.88
Distribution Charge	243 kWh X \$0.0515226 per kWh	12.52
Market Transition Tax	243 kWh X \$0.0010288 per kWh	0.25
Transition Bond Charge	243 kWh X \$0.0023868 per kWh	0.58
Non-Utility Generation Charge	243 kWh X \$0.0122634 per kWh	2.98
Societal Benefits Charge	243 kWh X \$0.0058025 per kWh	1.41
RGGI Energy Efficiency	243 kWh X \$0.0003292 per kWh	0.08
EDIT Credit 5 Yr - kWh	243 kWh X \$0.0047737 - per kWh	1.16--
Zero Emission Certif (ZEC) Charge	243 kWh X \$0.0042798 per kWh	1.04
<b>Total Electric Delivery Charges</b>		<b>28.54</b>

<b>Electric Summary</b>	
Balance from your last bill	\$56.13
Payment Apr 22	\$56.13--
<b>Total Payments</b>	<b>\$56.13--</b>
Electric Charges (Monthly General Service Secondary)	\$28.54
<b>New electric charges</b>	<b>\$28.54</b>
<b>Total amount due by Jun 1, 2020</b>	<b>\$28.54</b>

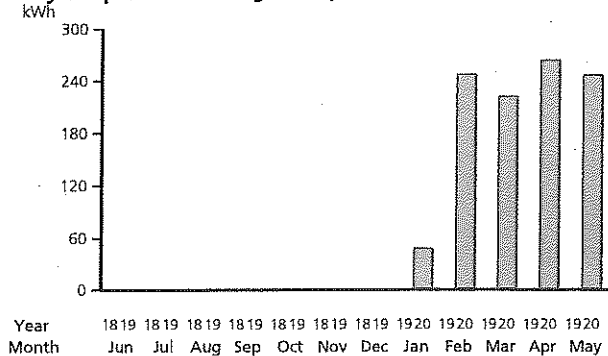


**Supply Charges:** These charges reflect the cost of producing electricity for you. You can compare this part of your bill to offers from competitive suppliers. The class average annual price to compare is 9.17 cents per kWh.

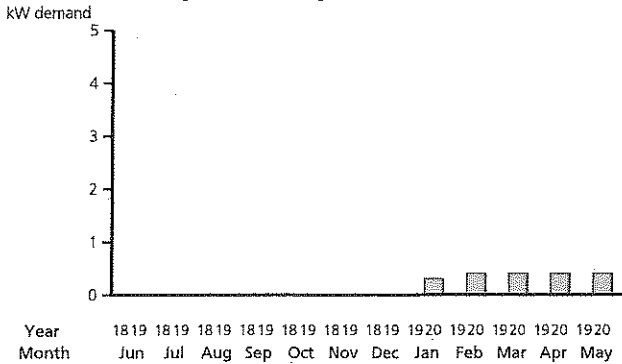
**Total Electric Charges - Monthly General Service Secondary** **28.54**

**Your monthly Electricity use in kWh**

**Daily temperature averages:** May 2019: 58° F May 2020: 53° F



**Your monthly Electricity use in kW demand**



**ECPGNJ electric supply charges**

**Service number 0550 0344 1205 7001 4298 10**

Your electricity is supplied by East Coast Power & Gas NJ, LLC. If you have any questions about your electric supply charges, call East Coast Power & Gas NJ, LLC at 1-800-545-9155.

East Coast Power & Gas NJ, LLC account number: 0550034412057001429810

Billing period: Apr 7, 2020 to May 6, 2020 (30 days)

Type of service: Monthly General Service Secondary

THANK YOU FOR USING EAST COAST POWER GAS

ENERGY CHARGE 243KH@0.078200

\$0.00  
 \$19.00  
 Amount(\$)  
**19.00**

<b>ECPGNJ Electric Supply Summary</b>	
<b>Balance from your last bill</b>	<b>\$37.46</b>
Payment Apr 22	\$37.46-
<b>Total Payments</b>	<b>\$37.46-</b>
Total Current Charges	\$19.00
<b>New ECPGNJ electric supply charges</b>	<b>\$19.00</b>
<b>Total amount due by Jun 1, 2020</b>	<b>\$19.00</b>

ECPGNJ electric charges

1007263-011434-0000003 of 0000004-C17-41-1037-07263



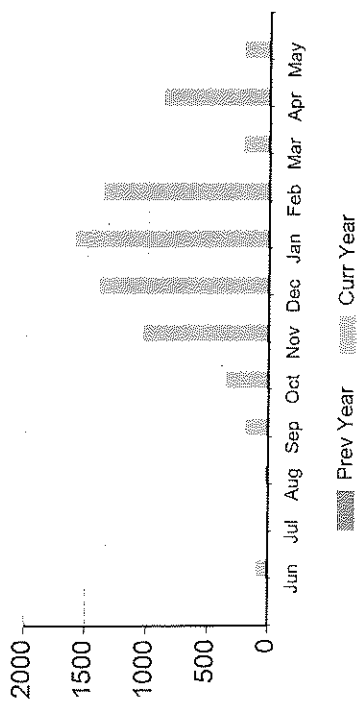
Invoice #: HS01848996  
 Account #: 446690 - 11399  
 Invoice Date: 05/11/2020  
 Payment Due Date: 06/25/2020

**CUSTOMER INFORMATION**

0000383 T3 0194 08085-424115 -C01-P00383-11  
 Swedesboro Woolwich Bld of Ed  
 Payable, Accounts  
 15 Fredrick Boulevard  
 Swedesboro, NJ 08085-4241

**USAGE HISTORY**

Monthly Gas (THERMS)



**MESSAGE CENTER**

**GO PAPERLESS TODAY**

Enroll in paperless billing today and help reduce your carbon footprint at [directenergybusiness.com/paperless](http://directenergybusiness.com/paperless).

**INVOICE SUMMARY**

Previous Balance	\$451.22
Payment Received (Apr 21, 2020)	(\$451.22)
<b>Total Balance Forward</b>	<b>\$0.00</b>
Adjustments	\$0.00
Late Payment Charge	\$0.00
Current Usage Charges	\$409.17
<b>Total Current Charges</b>	<b>\$409.17</b>

Amount Due by Jun 25, 2020 **\$409.17**

**PAYMENT OPTIONS**

- By web [myaccount.directenergy.com](http://myaccount.directenergy.com)
- By phone 1.888.925.9115
- By mail Remittance slip below

**QUESTIONS?**

- Visit Us [myaccount.directenergy.com](http://myaccount.directenergy.com)
- Call Us 1.888.925.9115

Invoice #: HS01848996

Statement Group #: 11399

**Contract Volumes:**

April 402 MMBTU

May 215 MMBTU

Basis: \$1.022

Billing Unit: MMBTU

Serv Loc ID:	Description	Deal ID	Date From - To	Volume	Unit Price	Total
447524	Commodity	2107295	04/07/2020 -05/06/2020	110.75	\$3.694556	\$409.17
<b>Service Period:</b> 04/07/2020-05/06/2020		<b>Total :</b>		110.75		\$409.17
<b>Utility Name:</b> South Jersey Gas						
<b>Pool/Point:</b> SJG DCQ POOL						
<b>Utility Acct #:</b> 6010073112-0594875						
<b>PO #:</b>						
<b>Address:</b> PO Box 216, SWEDESBORO, NJ 08085						

**Memo - Trigger History**

Description	Transaction Date	Volume	Unit Price	Total
<b>Deal Id : 2107295</b>				
Buy At Market: April 2020	12/12/2019	402	\$2.4430	\$982.09
	<b>Total</b>	<b>402</b>	<b>\$2.4430</b>	<b>\$982.09</b>
Buy At Market: May 2020	12/12/2019	215	\$2.4430	\$525.25
	<b>Total</b>	<b>215</b>	<b>\$2.4430</b>	<b>\$525.25</b>
	<b>Total for Deal</b>	<b>617</b>	<b>\$2.4430</b>	<b>\$1,507.33</b>



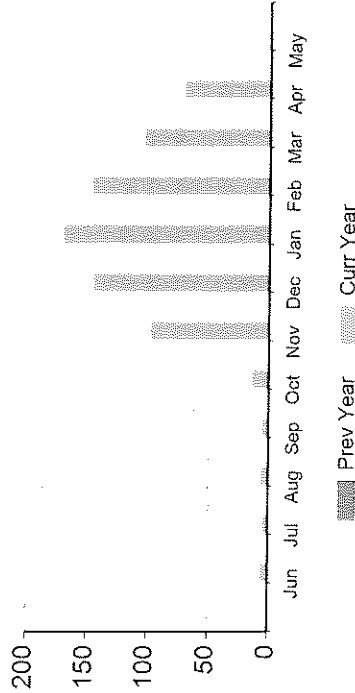
Invoice #: HS01838516  
 Account #: 446690 - 11398  
 Invoice Date: 05/06/2020  
 Payment Due Date: 06/20/2020

**CUSTOMER INFORMATION**

0000263 T2 0 0181 08085-424115 -C01-P00263-H1  
 Swedesboro Woolwich Bd of Ed  
 Payable, Accounts  
 15 Fredrick Boulevard  
 Swedesboro, NJ 08085-4241

**USAGE HISTORY**

Monthly Gas (THERMS)



**MESSAGE CENTER**

**GO PAPERLESS TODAY**

Enroll in paperless billing today and help reduce your carbon footprint at [directenergybusiness.com/paperless](http://directenergybusiness.com/paperless).

**INVOICE SUMMARY**

Previous Balance	\$87.93
Payment Received (Apr 21, 2020)	(\$87.93)
<b>Total Balance Forward</b>	<b>\$0.00</b>
Adjustments	\$0.00
Late Payment Charge	\$0.00
Current Usage Charges	\$26.38
<b>Total Current Charges</b>	<b>\$26.38</b>

Amount Due by Jun 20, 2020 **\$26.38**

**PAYMENT OPTIONS**

- By web [myaccount.directenergy.com](http://myaccount.directenergy.com)
- By phone 1.888.925.9115
- By mail Remittance slip below

**QUESTIONS?**

- Visit Us [myaccount.directenergy.com](http://myaccount.directenergy.com)
- Call Us 1.888.925.9115

11 000 3626 24 000 07

Invoice #: HS01838516

Statement Group #: 11398

Contract Volumes:

April 402 MMBTU

May 215 MMBTU

Basis: \$1.022

Billing Unit: MMBTU

Serv Loc ID:	Description	Deal ID	Date From - To	Volume	Unit Price	Total
447523	Commodity	2107295	04/02/2020 -05/01/2020	7.14	\$3.694556	\$26.38
Service Period: 04/02/2020-05/01/2020						
Utility Name: South Jersey Gas						
Pool/Point: SJG DCQ POOL						
Utility Acct #: 3010019873-0340571						
PO #:						
Address: PO Box 216, SWEDESBORO, NJ 08085						
				<b>Total :</b>		<b>\$26.38</b>

Memo : Trigger History

Description	Transaction Date	Volume	Unit Price	Total
Deal Id : 2107295				
Buy At Market: April 2020	12/12/2019	402	\$2.4430	\$982.09
	Total	402	\$2.4430	\$982.09
Buy At Market: May 2020	12/12/2019	215	\$2.4430	\$525.25
	Total	215	\$2.4430	\$525.25
	<b>Total for Deal</b>	<b>617</b>	<b>\$2.4430</b>	<b>\$1,507.33</b>



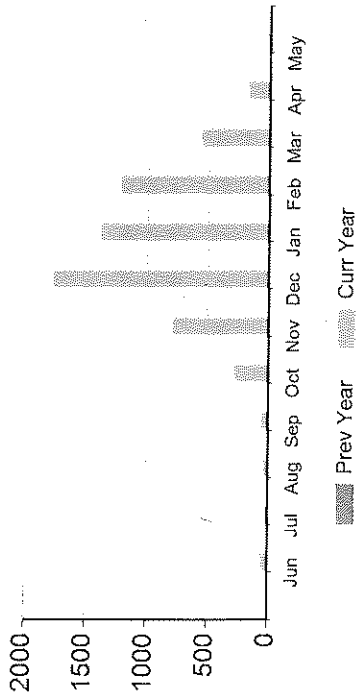
Invoice #: HS01841613  
 Account #: 446690 - 11397  
 Invoice Date: 05/07/2020  
 Payment Due Date: 06/21/2020

**CUSTOMER INFORMATION**

00 004 09 T3 0 0192 08085-424115 -C01-P00409-11  
 Swedesboro Woolwich Bd of Ed  
 Payable, Accounts  
 15 Fredrick Boulevard  
 Swedesboro, NJ 08085-4241

**USAGE HISTORY**

Monthly Gas (THERMS)



**MESSAGE CENTER**

**GO PAPERLESS TODAY**

Enroll in paperless billing today and help reduce your carbon footprint at [directenergybusiness.com/paperless](http://directenergybusiness.com/paperless).

**INVOICE SUMMARY**

Previous Balance	\$600.36
Payment Received (Apr 21, 2020)	(\$600.36)
<b>Total Balance Forward</b>	<b>\$0.00</b>
Adjustments	\$0.00
Late Payment Charge	\$0.00
Current Usage Charges	\$61.18
<b>Total Current Charges</b>	<b>\$61.18</b>

Amount Due by Jun 21, 2020

**\$61.18**

**PAYMENT OPTIONS**

- By web [myaccount.directenergy.com](http://myaccount.directenergy.com)
- By phone 1.888.925.9115
- By mail Remittance slip below

**QUESTIONS?**

- Visit Us [myaccount.directenergy.com](http://myaccount.directenergy.com)
- Call Us 1.888.925.9115

Invoice #: HS01841613

Statement Group #: 11397

Contract Volumes:

April 402 MMBTU

May 215 MMBTU

Basis: \$1.022

Billing Unit: MMBTU

Serv Loc ID:	Description	Deal ID	Date From - To	Volume	Unit Price	Total
447522	Commodity	2107295	04/03/2020 -05/04/2020	16.56	\$3.694556	\$61.18
<b>Service Period:</b> 04/03/2020-05/04/2020		<b>Total :</b>		<b>16.56</b>		<b>\$61.18</b>
<b>Utility Name:</b> South Jersey Gas						
<b>Pool/Point:</b> SJG DCQ POOL						
<b>Utility Acct #:</b> 1010019871-0555351						
<b>PO #:</b>						
<b>Address:</b> PO Box 216, SWEDESBORO, NJ 08085						

Memo : Trigger History

Description	Transaction Date	Volume	Unit Price	Total
<b>Deal Id : 2107295</b>				
Buy At Market: April 2020	12/12/2019	402	\$2.4430	\$982.09
	Total	402	\$2.4430	\$982.09
Buy At Market: May 2020	12/12/2019	215	\$2.4430	\$525.25
	Total	215	\$2.4430	\$525.25
	<b>Total for Deal</b>	<b>617</b>	<b>\$2.4430</b>	<b>\$1,507.33</b>



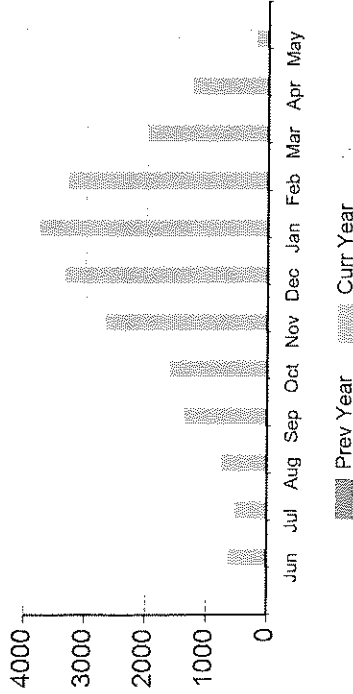
Invoice #: HS01844998  
 Account #: 446690 - 24235  
 Invoice Date: 05/09/2020  
 Payment Due Date: 06/22/2020

**CUSTOMER INFORMATION**

0000376 13 0193 08085-424115 -C01-P00376-11  
 Swedesboro Woolwich Bd of Ed  
 Payable, Accounts  
 15 Fredrick Boulevard  
 Swedesboro, NJ 08085-4241

**USAGE HISTORY**

Monthly Gas (THERMS)



**MESSAGE CENTER**

**GO PAPERLESS TODAY**

Enroll in paperless billing today and help reduce your carbon footprint at [directenergybusiness.com/paperless](http://directenergybusiness.com/paperless).

**INVOICE SUMMARY**

Previous Balance	\$1,751.33
Payment Received (Apr 21, 2020)	(\$1,751.33)
<b>Total Balance Forward</b>	<b>\$0.00</b>
Adjustments	\$0.00
Late Payment Charge	\$0.00
Current Usage Charges	\$481.81
<b>Total Current Charges</b>	<b>\$481.81</b>
<b>Amount Due by Jun 22, 2020</b>	<b>\$481.81</b>

**PAYMENT OPTIONS**

- By web [myaccount.directenergy.com](http://myaccount.directenergy.com)
- By phone 1.888.925.9115
- By mail Remittance slip below

**QUESTIONS?**

- Visit Us [myaccount.directenergy.com](http://myaccount.directenergy.com)
- Call Us 1.888.925.9115

Detach here and return this portion with check or money order. Do not attach to bill.

Invoice #: HS01844998  
 Statement Group #: 24235

Contract Volumes:  
 April 402 MMBTU  
 May 215 MMBTU  
 Basis: \$1.022  
 Billing Unit: MMBTU

Serv Loc ID:	Description	Deal ID	Date From - To	Volume	Unit Price	Total
569190	Commodity	2107295	04/04/2020 -05/05/2020	130.41	\$3.694556	\$481.81
Service Period: 04/04/2020-05/05/2020		<b>Total :</b>		<b>130.41</b>		<b>\$481.81</b>
Utility Name: South Jersey Gas						
Pool/Point: SJG DCQ POOL						
Utility Acct #: 1980020789-0542930						
PO #:						
Address: PO Box 216, SWEDESBORO, NJ 08085						

Memo : Trigger History				
Description	Transaction Date	Volume	Unit Price	Total
<b>Deal Id : 2107295</b>				
Buy At Market: April 2020	12/12/2019	402	\$2.4430	\$982.09
	<b>Total</b>	<b>402</b>	<b>\$2.4430</b>	<b>\$982.09</b>
Buy At Market: May 2020	12/12/2019	215	\$2.4430	\$525.25
	<b>Total</b>	<b>215</b>	<b>\$2.4430</b>	<b>\$525.25</b>
	<b>Total for Deal</b>	<b>617</b>	<b>\$2.4430</b>	<b>\$1,507.33</b>



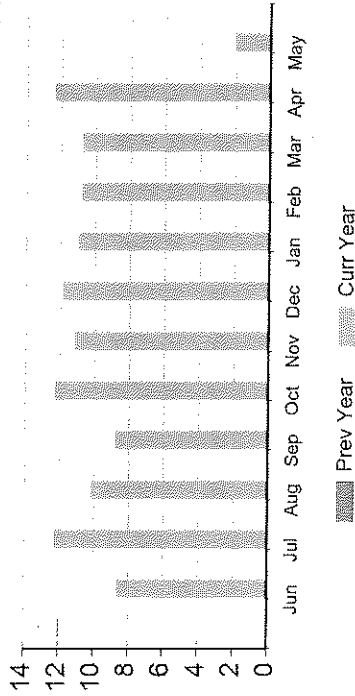
Invoice #: HS01844999  
 Account #: 446690 - 24236  
 Invoice Date: 05/08/2020  
 Payment Due Date: 06/22/2020

**CUSTOMER INFORMATION**

0000376 T3 0 0193 08085-424115 -CO1-P00376-11  
 Swedesboro Woolwich Bd of Ed  
 Payable, Accounts  
 15 Fredrick Boulevard  
 Swedesboro, NJ 08085-4241

**USAGE HISTORY**

Monthly Gas (THERMS)



**MESSAGE CENTER**

**GO PAPERLESS TODAY**

Enroll in paperless billing today and help reduce your carbon footprint at [directenergybusiness.com/paperless](http://directenergybusiness.com/paperless).

**INVOICE SUMMARY**

Previous Balance	\$7.66
Payment Received (Apr 21, 2020)	(\$7.66)
<b>Total Balance Forward</b>	<b>\$0.00</b>
Adjustments	\$0.00
Late Payment Charge	\$0.00
Current Usage Charges	\$4.99
<b>Total Current Charges</b>	<b>\$4.99</b>

Amount Due by Jun 22, 2020 **\$4.99**

**PAYMENT OPTIONS**

- By web [myaccount.directenergy.com](http://myaccount.directenergy.com)
- By phone 1.888.925.9115
- By mail Remittance slip below

**QUESTIONS?**

- Visit Us [myaccount.directenergy.com](http://myaccount.directenergy.com)
- Call Us 1.888.925.9115

Detach here and return this portion with check or money order. Do not staple or fold.

Invoice #: HS01844999  
 Statement Group #: 24236

Contract Volumes:  
 April 402 MMBTU  
 May 215 MMBTU  
 Basis: \$1.022  
 Billing Unit: MMBTU

Serv Loc ID:	569189	Description	Deal ID	Date From - To	Volume	Unit Price	Total
Service Period:	04/04/2020-05/05/2020	Commodity	2107295	04/04/2020 -05/05/2020	1.35	\$3.694556	\$4.99
Utility Name:	South Jersey Gas						
Pool/Point:	SJG DCQ POOL						
Utility Acct #:	2980020790-0670110						
PO #:							
Address:	PO Box 216, SWEDESBORO, NJ 08085						
			<b>Total :</b>		<b>1.35</b>		<b>\$4.99</b>

Memo : Trigger History				
Description	Transaction Date	Volume	Unit Price	Total
Deal Id : 2107295				
Buy At Market: April 2020	12/12/2019	402	\$2.4430	\$982.09
	Total	402	\$2.4430	\$982.09
Buy At Market: May 2020	12/12/2019	215	\$2.4430	\$525.25
	Total	215	\$2.4430	\$525.25
	<b>Total for Deal</b>	<b>617</b>	<b>\$2.4430</b>	<b>\$1,507.33</b>



SERVICE FOR SWEDESBORO-WOOLWICH  
SCHOOL DIS  
1771 OLDMANS CREEK RD  
WOOLWICH TWP NJ 08085

May 7, 2020  
Account Number: 1985910000  
Report gas leak: 800-582-7060  
Customer Contact Center: 888-766-9900  
www.southjerseygas.com

*5/12/20*

**BILLING SUMMARY FOR APRIL 3, 2020 TO MAY 5, 2020**

Previous Balance	\$5,890.26	Next meter reading is scheduled for June 5, 2020
Payment Received on April 23, 2020	-\$5,890.26	Thank you for your payment.
<b>Current Charges</b>	<b>\$1,014.26</b>	Subject to late payment charge if not paid by the due date.
Gas Charges	\$1,014.26	
<b>Amount Due By May 25, 2020</b>		
<b>\$1,014.26</b>		

**USAGE DETAIL**

Meter	Start Date	End Date	Start Reading	End Reading	Read Difference	Multiplier	Gas Used CCF	Therm Factor	Energy Used (Therms)
0542930	04-03-20	05-05-20	4,081	3,955	126	10	1,260.00	1.0300	1,297.80

All readings are actual unless otherwise noted with an asterisk(\*).

**USAGE COSTS**

Customer Charge	\$34.09	Service Agreement: 1980020789
Delivery Charge	1,297.80 Therms x \$0.668140	Your rate schedule: General Service FT(GSGFT)
Balancing Service Charge	1,297.80 Therms x \$0.087115	
<b>Total Usage Costs</b>	<b>\$1,014.26</b>	

**USAGE HISTORY - COMPARISON**

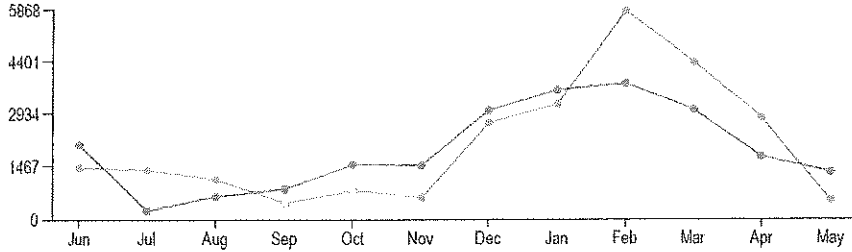
Month	Energy used (therms)	Days in Period	Average Temperature
May 2019	515.50	32	60.59°
May 2020	1297.80	32	53.58°

Automated Payments available.  
Enjoy the convenience of paying your bill automatically every month. Save a stamp, time and paper. Plus, it's free, secure and one less thing to think about. Enroll today at myaccount.southjerseygas.com or by phone at 1.866.334.6012.

**ANNUAL COMPARISON**

Energy (therms x 100)

○ Estimated Reading    --- Last Year  
 ● Actual Reading        --- This Year



**NEWS FROM SOUTH JERSEY GAS**

**Customer Service Center Processing Delays**

Staffing limitations and processing delays may slow the posting of payments reflected in your account activity. This is more likely for payments delivered in-person to our customer service center drop boxes. Payments can always be mailed for faster processing to South Jersey Gas, PO Box 6091, Bellmawr, NJ 08099-6091. You can also easily pay online at no charge using a bank account - simply visit [myaccount.southjerseygas.com](http://myaccount.southjerseygas.com) to create an account or manage your payments. South Jersey Gas does not charge late fees on delayed residential account payments.

**Having trouble paying your South Jersey Gas bill? Help is Available.**

There are multiple energy assistance programs available to help you with your monthly utility bill. Our financial assistance team is here to answer questions and walk you through the application process. Visit [southjerseygas.com/energyassistance](http://southjerseygas.com/energyassistance) for more information.





SERVICE FOR SWEDESBORO  
ELEMENTARY SCHOOL  
15 FREDRICK BLVD  
SWEDESBORO NJ 08085

May 8, 2020  
Account Number: 6019020000  
Report gas leak: 800-582-7060  
Customer Contact Center: 888-766-9900  
www.southjerseygas.com

**BILLING SUMMARY FOR APRIL 6, 2020 TO MAY 6, 2020**

Previous Balance \$1,941.29  
 Payment Received on April 23, 2020 -\$1,941.29  
**Current Charges \$864.34**  
 Gas Charges \$864.34

**Amount Due By May 25, 2020 \$864.34**

**USAGE DETAIL**

Meter	Start Date	End Date	Start Reading	End Reading	Read Difference	Multiplier	Gas Used CCF	Therm Factor	Energy Used (Therms)
0594875	04-06-20	05-06-20	4,320	4,213	107	10	1,070.00	1.0300	1,102.10

All readings are actual unless otherwise noted with an asterisk(\*).

**USAGE COSTS**

Customer Charge \$31.96  
 Delivery Charge 1,102.10 Therms x \$0.668140 \$736.37  
 Balancing Service Charge 1,102.10 Therms x \$0.087115 \$96.01  
**Total Usage Costs \$864.34**

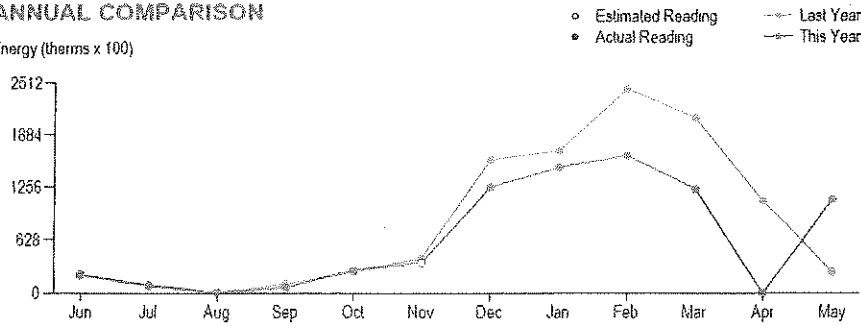
**USAGE HISTORY - COMPARISON**

Month	Energy used (therms)	Days in Period	Average Temperature
May 2019	247.44	32	61.28°
May 2020	1102.10	30	53.31°

Automated Payments available.  
 Enjoy the convenience of paying your bill automatically every month. Save a stamp, time and paper. Plus, it's free, secure and one less thing to think about. Enroll today at myaccount.southjerseygas.com or by phone at 1.866.334.6012.

**ANNUAL COMPARISON**

Energy (therms x 100)


**NEWS FROM SOUTH JERSEY GAS**
**Customer Service Center Processing Delays**

Staffing limitations and processing delays may slow the posting of payments reflected in your account activity. This is more likely for payments delivered in-person to our customer service center drop boxes. Payments can always be mailed for faster processing to South Jersey Gas, PO Box 6091, Bellmawr, NJ 08099-6091. You can also easily pay online at no charge using a bank account - simply visit [myaccount.southjerseygas.com](http://myaccount.southjerseygas.com) to create an account or manage your payments. South Jersey Gas does not charge late fees on delayed residential account payments.

**Having trouble paying your South Jersey Gas bill? Help is Available.**

There are multiple energy assistance programs available to help you with your monthly utility bill. Our financial assistance team is here to answer questions and walk you through the application process. Visit [southjerseygas.com/energyassistance](http://southjerseygas.com/energyassistance) for more information.





SERVICE FOR WALTER HILL SCHOOL  
 1815 KINGS HWY  
 SWEDESBORO NJ 08085

May 7, 2020  
 Account Number: 0015910000  
 Report gas leak: 800-582-7060  
 Customer Contact Center: 888-766-9900  
 www.southjerseygas.com

**BILLING SUMMARY FOR APRIL 6, 2020 TO MAY 5, 2020**

Next meter reading is scheduled for June 5, 2020

\$2,577.41

Previous Balance

-\$2,577.41

Payment Received on April 23, 2020

Current Charges

\$202.02

Gas Charges

\$202.02

Amount Due By May 25, 2020

\$202.02

Thank you for your payment

**USAGE DETAIL**

Meter	Start Date	End Date	Start Reading	End Reading	Read Difference	Multiplier	Gas Used CCF	Therm Factor	Energy Used (Therms)
0594864	04-06-20	05-05-20	4,234	4,212	22	10	220.00	1.0300	226.60

All readings are actual unless otherwise noted with an asterisk(\*)

**USAGE COSTS**

Customer Charge	\$30.89
Delivery Charge	226.60 Therms x \$0.668140 = \$151.39
Balancing Service Charge	226.60 Therms x \$0.087115 = \$19.74
<b>Total Usage Costs</b>	<b>\$202.02</b>

Service Agreement: 0010019870

Your rate schedule: General Service FT(GSGFT)

**USAGE HISTORY - COMPARISON**

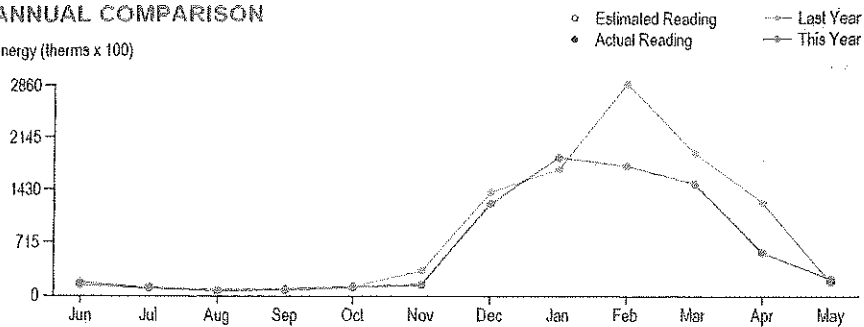
Month	Energy used (therms)	Days in Period	Average Temperature
May 2019	185.58	29	60.54°
May 2020	226.60	29	53.48°

Automated Payments available.

Enjoy the convenience of paying your bill automatically every month. Save a stamp, time and paper. Plus, it's free, secure and one less thing to think about. Enroll today at myaccount.southjerseygas.com or by phone at 1.866.334.6012.

**ANNUAL COMPARISON**

Energy (therms x 100)


**NEWS FROM SOUTH JERSEY GAS**
**Customer Service Center Processing Delays**

Staffing limitations and processing delays may slow the posting of payments reflected in your account activity. This is more likely for payments delivered in-person to our customer service center drop boxes. Payments can always be mailed for faster processing to South Jersey Gas, PO Box 6091, Bellmawr, NJ 08099-6091. You can also easily pay online at no charge using a bank account - simply visit [myaccount.southjerseygas.com](http://myaccount.southjerseygas.com) to create an account or manage your payments. South Jersey Gas does not charge late fees on delayed residential account payments.

**Having trouble paying your South Jersey Gas bill? Help is Available.**

There are multiple energy assistance programs available to help you with your monthly utility bill. Our financial assistance team is here to answer questions and walk you through the application process. Visit [southjerseygas.com/energyassistance](http://southjerseygas.com/energyassistance) for more information.





SERVICE FOR WALTER HILL PRE-SCHOOL  
 815 KINGS HWY  
 SWEDESBORO NJ 08085

May 5, 2020  
 Account Number: 3015910000  
 Report gas leak: 800-582-7060  
 Customer Contact Center: 888-766-9900  
 www.southjerseygas.com

**BILLING SUMMARY FOR APRIL 1, 2020 TO MAY 1, 2020**

Previous Balance \$405.56  
 Payment Received on April 23, 2020 -\$405.56  
**Current Charges \$85.63**  
 Gas Charges \$85.63  
**Amount Due By May 22, 2020 \$85.63**

Next meter reading is scheduled for June 3, 2020

Thank you for your payment.

Subject to late payment charge if not paid by the due date.

**USAGE DETAIL**

Meter	Start Date	End Date	Start Reading	End Reading	Read Difference	Multiplier	Gas Used CCF	Therm Factor	Energy Used (Therms)
0340571	04-01-20	05-01-20	4,174	4,243	69	1	69.00	1.0300	71.07

All readings are actual unless otherwise noted with an asterisk(\*).

**USAGE COSTS**

Customer Charge \$31.96  
 Delivery Charge 71.07 Therms x \$0.668140 \$47.48  
 Balancing Service Charge 71.07 Therms x \$0.087115 \$6.19  
**Total Usage Costs \$85.63**

Service Agreement: 3010019873

Your rate schedule: General Service FT(GSGFT)

**USAGE HISTORY - COMPARISON**

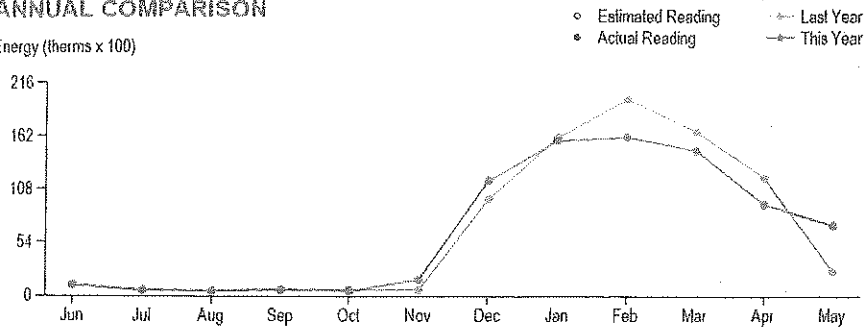
Month	Energy used (therms)	Days in Period	Average Temperature
May 2019	24.74	31	60.20°
May 2020	71.07	30	52.44°

Automated Payments available.

Enjoy the convenience of paying your bill automatically every month. Save a stamp, time and paper. Plus, it's free, secure and one less thing to think about. Enroll today at [myaccount.southjerseygas.com](http://myaccount.southjerseygas.com) or by phone at 1.866.334.6012.

**ANNUAL COMPARISON**

Energy (therms x 100)



**NEWS FROM SOUTH JERSEY GAS**

**Customer Service Center Processing Delays**

Staffing limitations and processing delays may slow the posting of payments reflected in your account activity. This is more likely for payments delivered in-person to our customer service center drop boxes. Payments can always be mailed for faster processing to South Jersey Gas, PO Box 6091, Belmawr, NJ 08099-6091. You can also easily pay online at no charge using a bank account - simply visit [myaccount.southjerseygas.com](http://myaccount.southjerseygas.com) to create an account or manage your payments. South Jersey Gas does not charge late fees on delayed residential account payments.

**Having trouble paying your South Jersey Gas bill? Help is Available.**

There are multiple energy assistance programs available to help you with your monthly utility bill. Our financial assistance team is here to answer questions and walk you through the application process. Visit [southjerseygas.com/energyassistance](http://southjerseygas.com/energyassistance) for more information.

