



# Response to Intervention

Swedesboro-Woolwich Curriculum &  
Title 1 Parent Night  
March 12, 2019

# Goals for this Presentation

- ★ Understand Response to Intervention
- ★ Gain information on how your child's teacher plans and provides interventions to help your child
- ★ Understand how help for your child increases or decreases depending on your child's needs
- ★ Gain resources to support your child



# What is RtI?

RtI stands for Response to Interventions and it is a framework consisting of 3 tiers for service delivery that is:

- Systematic
- Data-based
- Focused on identifying and resolving student academic and behavioral difficulties
- Scientifically based instructional practices

# Why use RtI?

Quality, general education instruction usually provides a good match for the majority of students. However, this is not true for all students.

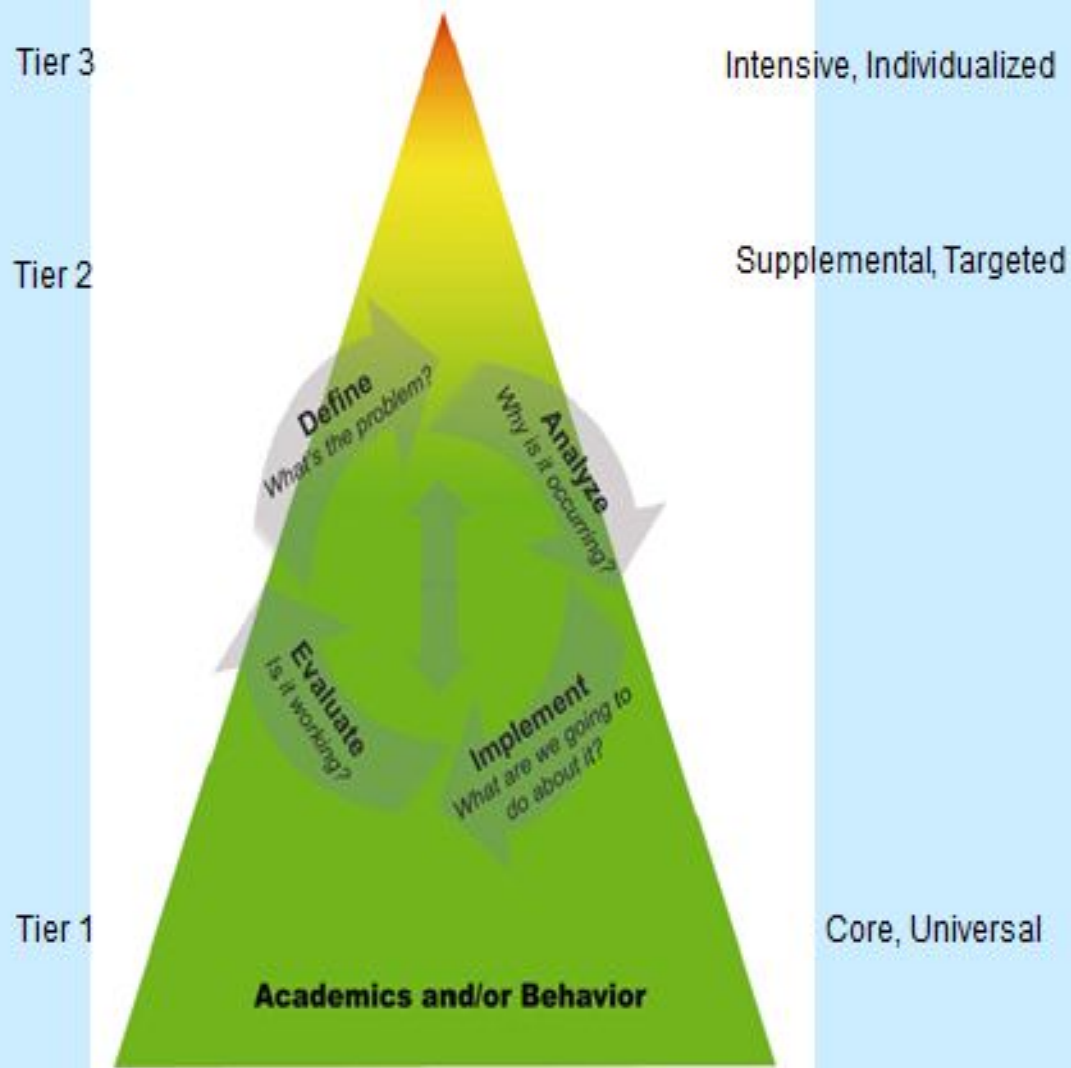
The RtI model aides in the early identification of a student who is not responding to the general education curriculum, and provides them with interventions and behavioral supports until they are successful meeting the requirements of the standards.



# Goals of Rtl

- ❖ For our schools to provide effective teaching that fits the needs of every student.
- ❖ For our schools to make sure the classroom environment is the best possible for every student.
- ❖ To help all students meet grade level standards.
- ❖ To “add to” the general education instruction, not “replace” with something different.
- ❖ To provide interventions (help) as a natural, ongoing part of education that does not wait until the student is struggling.

# The RtI Pyramid



# Tier 1



- ❖ About 80% of the student population.
- ❖ High quality teaching and behavior support for all students
- ❖ General education curriculum
- ❖ Implemented by the general education teacher
- ❖ Small group opportunities
- ❖ Accommodations and Modifications are possible on independent assignments

# Tier 2



- ❖ 10-15% of the population of students
- ❖ Only when Tier 1 alone is not enough.
- ❖ Small groups - usually 3-5 students, 2-3 times per week for 30-40 minutes each session by an ACES teacher.
- ❖ Scientifically based curriculum that mirrors the Classroom Curriculum
- ❖ Intended to remediate the student's skill deficits and promote continued participation in the general education
- ❖ NOT Special Education

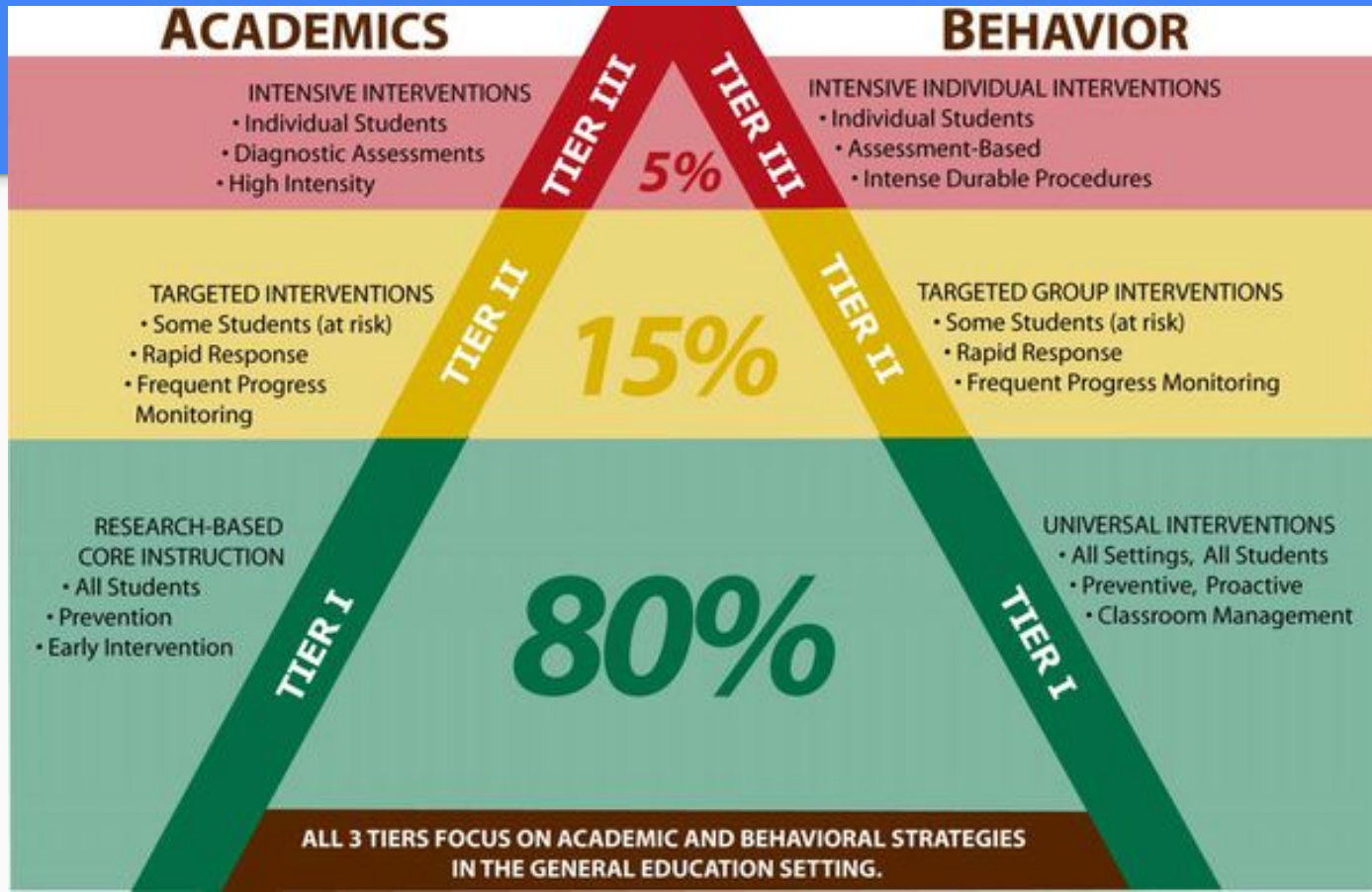


# Tier 3



- ❖ 5 % of the population of students
- ❖ Tiers 1 and 2 are not enough
- ❖ Some Tier 3 students may be going through the Child Study Team (CST) process and receiving assessments
- ❖ Tier 3 interventions are more intensive
- ❖ Smaller groups of 1-2 student that meet 4-5 times per week
- ❖ Curriculum consists of scientifically based programs that go above and beyond the general education curriculum to meet the specific needs of the student

# Overview



# RtI In Your Child's Classroom

The video, presented by Edutopia, is an example of how RTI works in a school environment.



# What do I do if I believe my child is struggling?

- ❖ Talk with your child's teacher.
- ❖ Know and understand your child's classroom goals, targets, and/or scales so you can reinforce at home.
- ❖ Make reading an everyday habit at home.
- ❖ Monitor and assist with homework assignments.
- ❖ Share your child's success.
- ❖ Communication is key.



# Parent Resources

<https://www.understood.org/~media/acc8e8c166c7432582494ece864cb16c.pdf>

<http://www.parentcenterhub.org/repository/rti/>

[http://www.isbe.net/RtI\\_plan/pdf/parent-faq10.pdf](http://www.isbe.net/RtI_plan/pdf/parent-faq10.pdf)

<http://www.rti4success.org/resources/family-resources>

# Questions

