

**Enrollment Projection**  
for the  
**Swedesboro-Woolwich School District**  
15 Frederick Blvd.  
Woolwich, NJ 08085

Prepared by



**Sundance Associates**  
117 Greenvale Court  
Cherry Hill, NJ 08034-1701

Tel 856-755-0174  
Fax 856-755-0176  
E-mail: [gsundell@sundanceassoc.com](mailto:gsundell@sundanceassoc.com)

March 1, 2017

---

## TABLE of CONTENTS

	Page
Executive Summary	i
Live Births	1
Future Housing	2
Residential Building Permits	3
Cohort Survival Ratios (Basis of Adjustment)	4
District-wide Enrollment Projection	5
PreK and K Enrollment Projections	6
Grade 1 & 2 Enrollment Projections	7
Grades 3-5 Enrollment Projections	8
Grade 6 Enrollment Projections	9



**The Methodology** used in projecting enrollments is the recommended method of the New Jersey Department of Education and is known as “Cohort Survival” or “Grade Level Progression”.

**Live Births** in the district have been generally declining since year 2007 with a high of 245 Births to a year 2013 low of 142 Births.

*This annual loss of 100 Births is the equivalent of 4 classrooms.*

The 6-year average of 181 Births is used in the projection for those years not yet available but required for the projection.

The 6-year trend in the District is for 6 fewer births each year, however, Births increased in 2014 for a possible change in the trend.

**Proposed New Housing** is for 481 units over the next 5 years.

**Historic Residential permitting** for new construction peaked at 387 units in year 2005. Permitting in the last 6 years has averaged 109 units with year 2015 at only 89 units. This projection assumes that Swedesboro housing continues without change. Housing in Woolwich is projected to average 96 units over the next 5 years. The level in Woolwich is below the recent 6-year average level of 109. Therefore no adjustment is made to the projection for accelerated housing.

**Cohort Survival Ratios** for Birth to Kindergarten in the last three years are significantly higher than the prior three. The projection is adjusted to use the 3-year B:K average. Ratios above 1.00 in the other grade levels indicate extensive local In-migration due more to housing re sales than new house sales. Early grades have higher Survival Rates, and Grade 3:4 SR at 0.989 is the only rate under 1.00.

**Historic Enrollments** in the District were generally decreasing from a peak of 1,744 in 2014 to 1,689 in 2016.

**District-wide Enrollments** will decrease by 162 students to 1,527 students at the end of the 5-year projection in 2021.

*Without adjusting the B:K Survival Ratio, District-wide enrollments would decrease an additional 41 students, to 1,487, in the 5-year projection period.*

**Early Childhood Enrollments** for Grades PK-K, will decrease by 22 students over the 5-year projection period to 225 students in 2021. The large decrease in 2018-19 is a reflection of low Births in 2013.

**Elementary Enrollments** for Grades 1 & 2, will fluctuate and end the projection period at 417, 11 students ahead of the current enrollment.

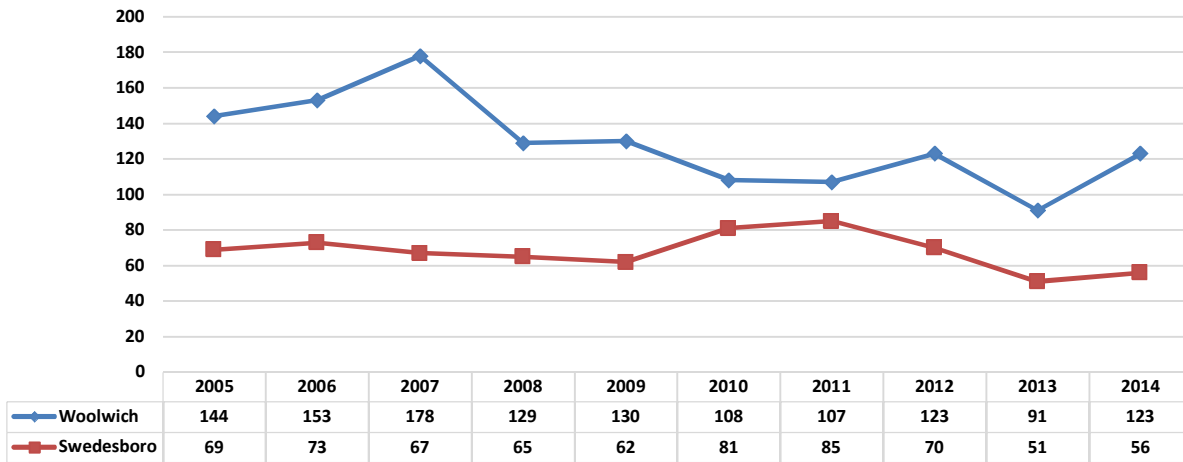
**Elementary Enrollments** for Grades 3-5, will decrease by 122 students over the 5-year projection period to 656 students in 2021.

**Intermediate Enrollments** for Grades 6, will decrease by 29 students over the 5-year projection period to 229 students in 2021.

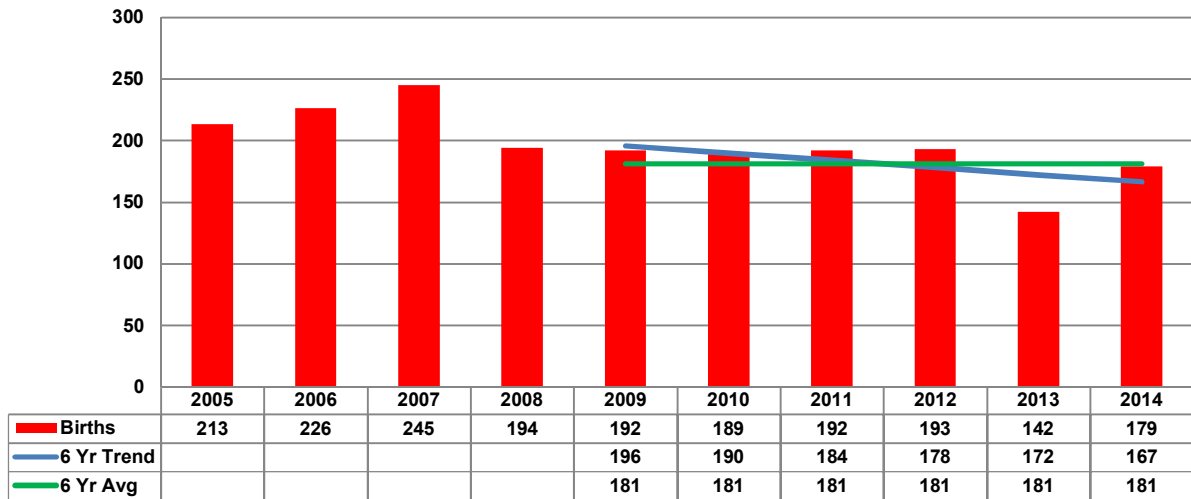
*Enrollments over the 5-year projection period will decrease in all Schools except Stratton, as follows;*

*Clifford... -22  
Stratton... +11  
Harker... -122  
Hill... -29*

### Live Births by Municipality



### Combined Live Births



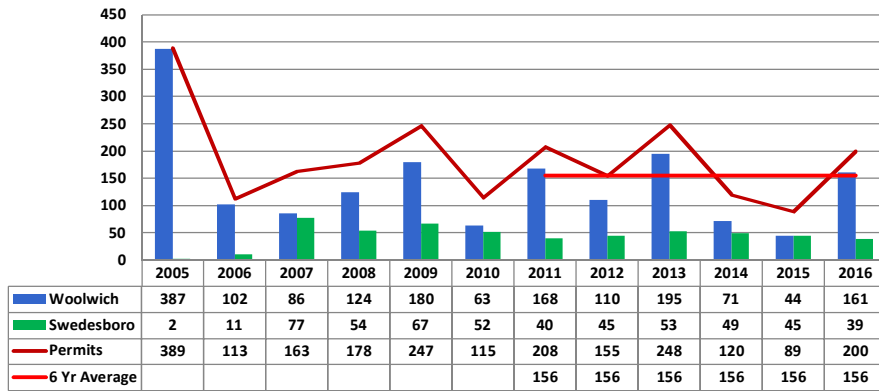
The 6-year average Births of 181 will be used for "Births Five years Earlier" for School year 2020-21 and forward.  
 The 6-year trend in the District is for 6 fewer Births every year.  
 In Woolwich, Births peaked at 178 in 2007 and decreased to 91 in 2013.  
 In Swedesboro, Births peaked at 85 in 2011 before decreasing to 51 in 2013.

**Future Housing**

	Type	Bdrms	2017	2018	2019	2020	2021	Total
<b>Ryan Sec2.5 A/B</b>	SF	3/4 Bdrm	20	40	23			83
			<b>20</b>	<b>40</b>	<b>23</b>			<b>83</b>
<b>Ridings/Orleans</b>	SF	3/4 Bdrm		20	20	20	20	80
				<b>20</b>	<b>20</b>	<b>20</b>	<b>20</b>	<b>80</b>
<b>Lexington Mews</b>	TH	3 Bdrm	7	13	13	13	13	59
	TH	2 Bdrm	6	13	13	13	13	58
			<b>13</b>	<b>26</b>	<b>26</b>	<b>26</b>	<b>26</b>	<b>117</b>
<b>Weatherby Place</b>	TH	3 Bdrm		20	20	21		61
	TH	2 Bdrm		20	20	20		60
				<b>40</b>	<b>40</b>	<b>41</b>		<b>121</b>
<b>CFS/Conifer</b>	Apt/Aff	3 Bdrm	24					
		2 Bdrm	40					
		1 Bdrm	16					
			<b>80</b>					
<b>TOTAL</b>			<b>113</b>	<b>126</b>	<b>109</b>	<b>87</b>	<b>46</b>	<b>481</b>
6 Year Avg Delta			4	17	0	-22	-63	

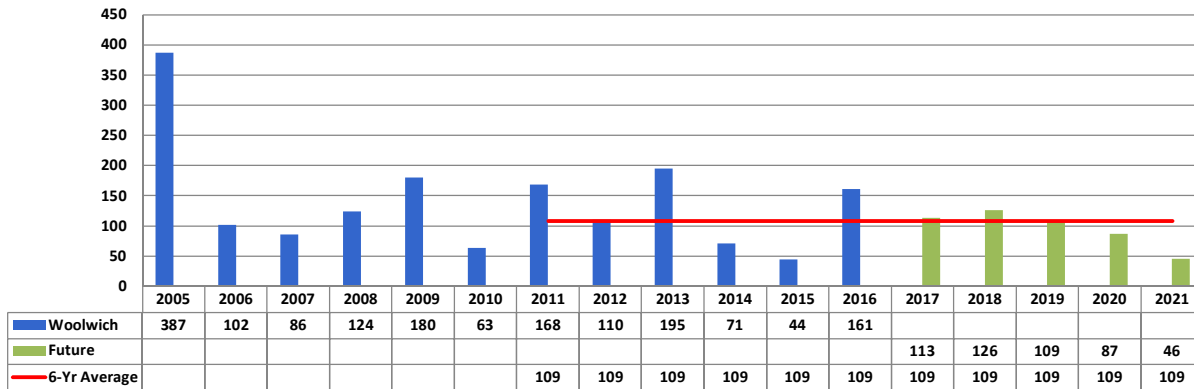
Counts and Build-out schedules for units approved but not built or occupied are from Ken Schatz of Cohen Schatz, the holder of the Master Development approval for the cited developments.

**Building Permits: Woolwich & Swedesboro**

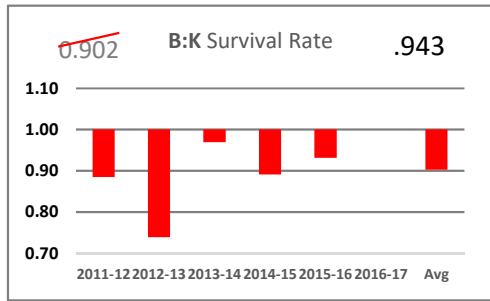


The impact of new residential permits is of minor interest in Swedesboro.

**Building Permits: Woolwich Township**

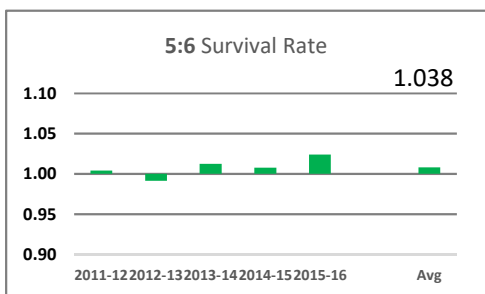
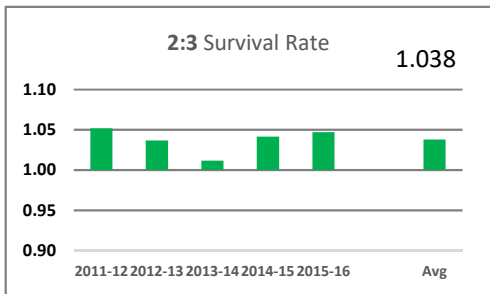
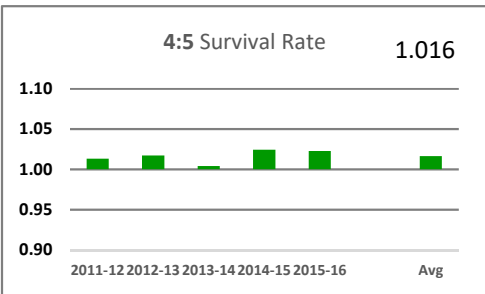
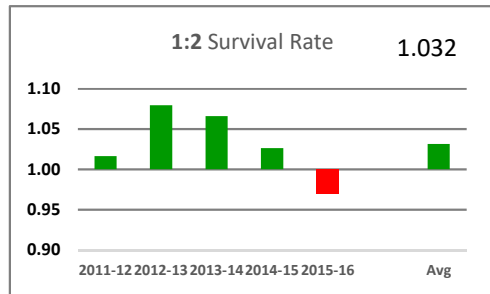
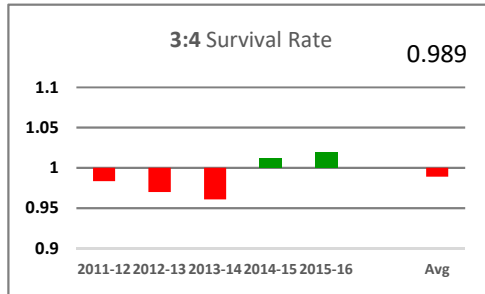
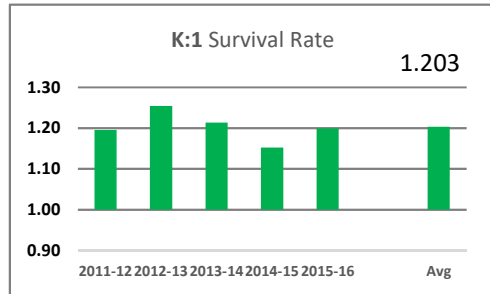


In Woolwich Township, the near future anticipated level is generally below the recent 6-year average. No adjustment is made to the projection for new housing.

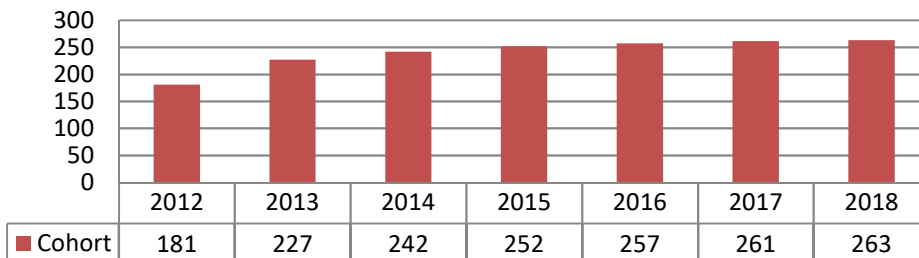


The 6-year B:K S/R (Birth to Kindergarten Survival Ratio) is not used in favor of the most recent 3-Yr B:K ratio which is significantly increased over the 6-year ratio.

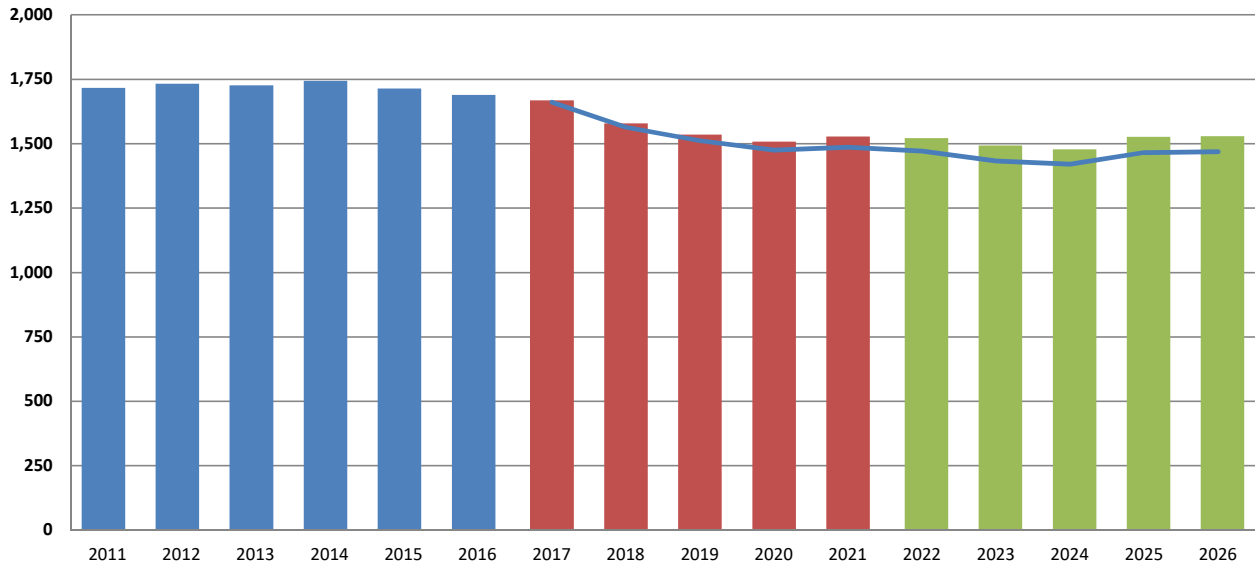
An S/R (Survival Ratio) of .943 is used rather than .902.



**Cohort Growth: 2012 K TO 2018 Gr 6**  
(Current 4th Grade)



### District-wide Enrollments



#### District-wide

	TOTAL	Average	Change	%Chg
<b>Historic</b>				
2011	1,717			
2012	1,732			
2013	1,727			
2014	1,744	1,721		
2015	1,714			
2016	1,689		-28	-1.6%
<b>Projected</b>				
2017	1,669			
2018	1,578			
2019	1,535	1,563		
2020	1,508			
2021	1,527		-162	-9.7%
<b>Extended</b>				
2022	1,521			
2023	1,492			
2024	1,478	1,509		
2025	1,526			
2026	1,529		1	0.1%

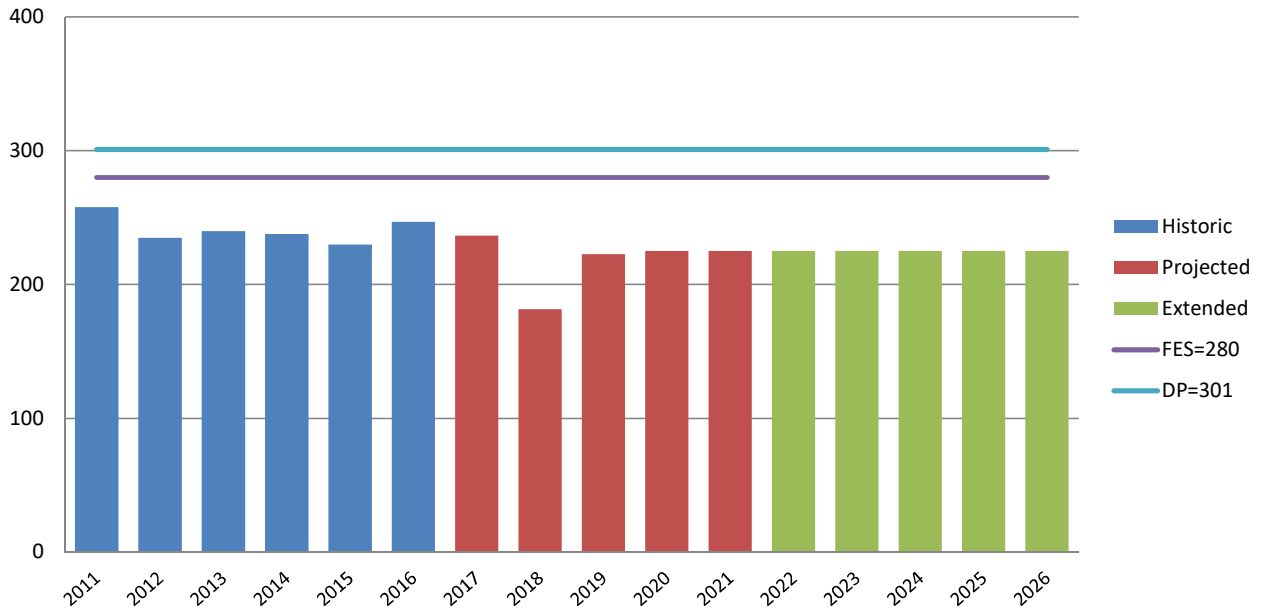
The Standard projection, using the 6-Year Average of B:K is shown as a blue line on the graph. After 5 years, The standard projection is for 41 fewer students than the adjusted projection.

	1,661	-7
	1,564	-14
	1,512	-23
	1,476	-32
	1,487	-41
Not	1,472	-50
Reliable >	1,434	-59
	1,420	-58
	1,466	-60
	1,469	-60
	Std	Delta

**B:K Adjusted Cohort Survival Projection**  
 Swedesboro-Woolwich School District  
**Clifford Early Education PreK & K Enrollments**

	Year	K-4				Period	Period	
		PK	PK SE	K	K SE	TOTAL	Average	Change
<b>Historic</b>	2011	21	29	200	8	<b>258</b>		
	2012	33	16	181	5	<b>235</b>		
	2013	23	16	188	13	<b>240</b>		
	2014	43	11	171	13	<b>238</b>	241	
	2015	19	25	176	10	<b>230</b>		
	2016	32	14	192	9	<b>247</b>		-11 -4.3%
<b>Projected</b>	2017	33	13	182	9	<b>237</b>		
	2018	24	15	134	9	<b>182</b>		
	2019	30	15	168	9	<b>223</b>	218	
	2020	31	15	170	9	<b>225</b>		
	2021	31	15	170	9	<b>225</b>		-22 -9.2%
<b>Extended</b>	2022	31	15	170	9	<b>225</b>		
	2023	31	15	170	9	<b>225</b>		
	2024	31	15	170	9	<b>225</b>	225	
	2025	31	15	170	9	<b>225</b>		
	2026	31	15	170	9	<b>225</b>		0 0.0%

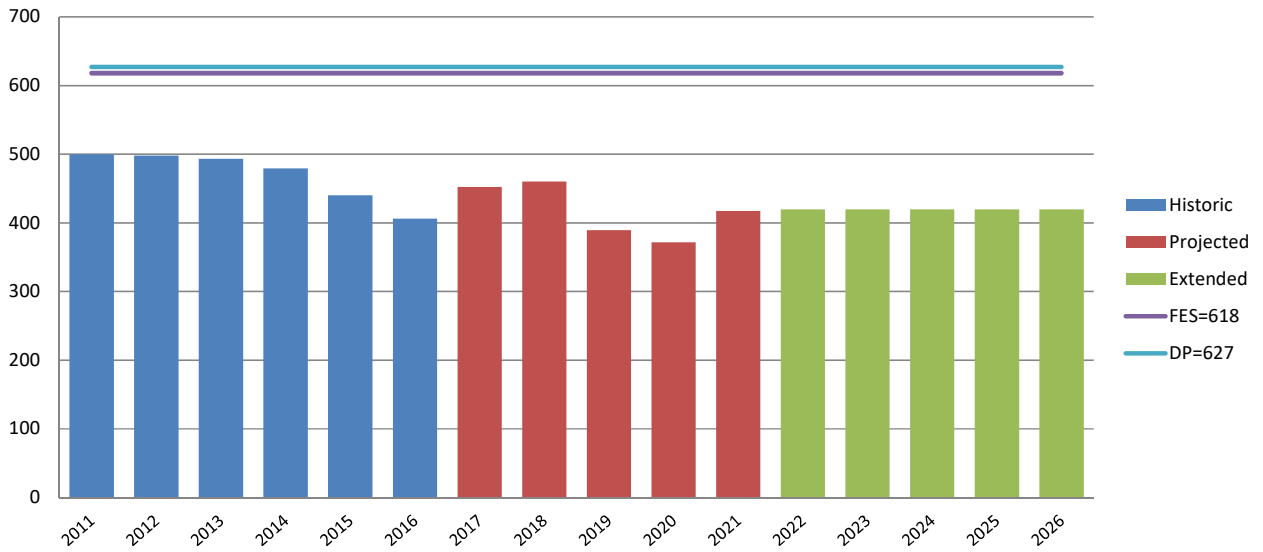
**Early Ed PK & K Enrollments**



**B:K Standard Cohort Survival Projection**  
 Swedesboro-Woolwich School District  
**Stratton Elementary Grades 1 & 2 Enrollments**

		1 & 2		SE	TOTAL	Period	Period
		1	2			Average	Change
<b>Historic</b>	<b>2011</b>	243	252	5	<b>500</b>		
	<b>2012</b>	239	247	12	<b>498</b>		
	<b>2013</b>	227	258	8	<b>493</b>		
	<b>2014</b>	228	242	9	<b>479</b>	469	
	<b>2015</b>	197	234	9	<b>440</b>		
	<b>2016</b>	211	191	4	<b>406</b>		-94 -18.8%
<b>Projected</b>	<b>2017</b>	231	218	4	<b>452</b>		
	<b>2018</b>	218	238	3	<b>460</b>		
	<b>2019</b>	161	225	3	<b>389</b>	418	
	<b>2020</b>	202	166	3	<b>371</b>		
	<b>2021</b>	205	209	3	<b>417</b>		11 2.4%
<b>Extended</b>	<b>2022</b>	205	211	3	<b>419</b>		
	<b>2023</b>	205	211	3	<b>419</b>		
	<b>2024</b>	205	211	3	<b>420</b>	420	
	<b>2025</b>	205	211	3	<b>420</b>		
	<b>2026</b>	205	211	3	<b>420</b>		3 0.6%

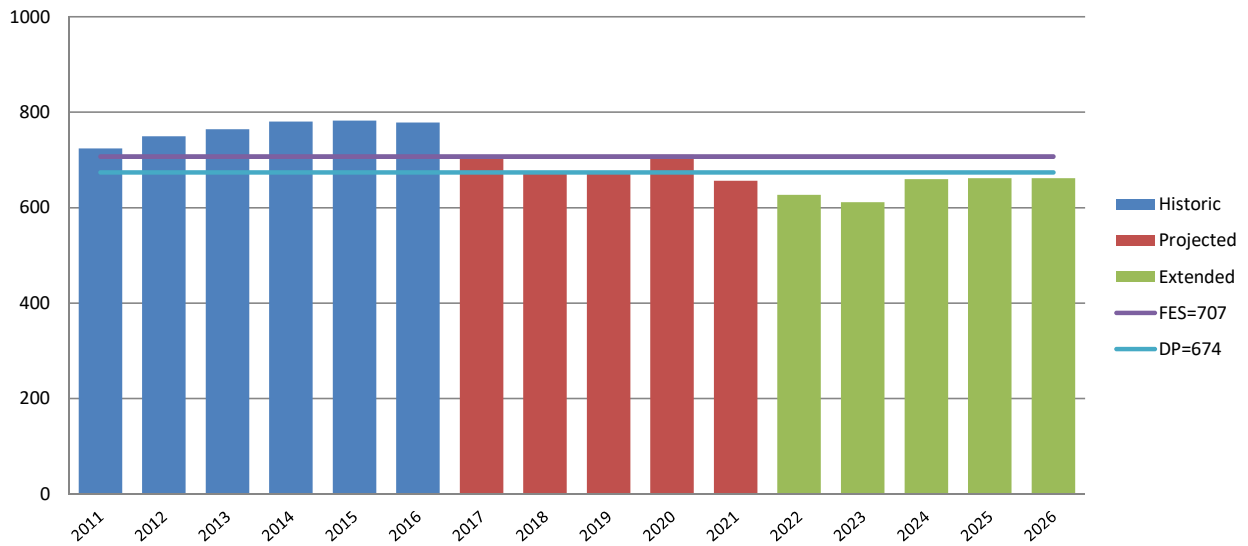
**Elementary Gr 1 & 2 Enrollments**



**B:K Adjusted Cohort Survival Projection**  
 Swedesboro-Woolwich School District  
**Harker Elementary Grades 3-5 Enrollments**

		3	4	5	3-5 SE	3-5 TOTAL	Period Average	Period Change
<b>Historic</b>	<b>2011</b>	239	229	248	8	<b>724</b>		
	<b>2012</b>	265	235	232	17	<b>749</b>		
	<b>2013</b>	256	257	239	12	<b>764</b>		
	<b>2014</b>	261	246	258	15	<b>780</b>	763	
	<b>2015</b>	252	264	252	14	<b>782</b>		
	<b>2016</b>	245	257	270	6	<b>778</b>		54 7.5%
<b>Projected</b>	<b>2017</b>	198	242	261	6	<b>707</b>		
	<b>2018</b>	226	196	246	5	<b>673</b>		
	<b>2019</b>	247	223	199	5	<b>675</b>	684	
	<b>2020</b>	234	244	227	5	<b>710</b>		
	<b>2021</b>	172	231	248	5	<b>656</b>		-122 -17.2%
	<b>Extended</b>	<b>2022</b>	217	170	235	5	<b>626</b>	
<b>2023</b>		219	214	173	5	<b>611</b>		
<b>2024</b>		219	217	218	5	<b>659</b>	644	
<b>2025</b>		219	217	220	5	<b>662</b>		
<b>2026</b>		219	217	220	5	<b>662</b>		5 0.9%

**Elementary Gr 3-5 Enrollments**



**B:K Adjusted Cohort Survival Projection**  
 Swedesboro-Woolwich School District  
**Hill Elementary School Grade 6 Enrollments**

		6	Gr 6	Period	Period	
	6	SE	TOTAL	Average	Change	
<b>Historic</b>	2011	234	0	<b>234</b>		
	2012	249	0	<b>249</b>		
	2013	230	0	<b>230</b>		
	2014	242	0	<b>242</b>	246	
	2015	260	0	<b>260</b>		
	2016	258	0	<b>258</b>	24	10.3%
<b>Projected</b>	2017	272	0	<b>272</b>		
	2018	263	0	<b>263</b>		
	2019	248	0	<b>248</b>	243	
	2020	201	0	<b>201</b>		
	2021	229	0	<b>229</b>	-29	-10.7%
	<b>Extended</b>	2022	250	0	<b>250</b>	
2023		237	0	<b>237</b>		
2024		174	0	<b>174</b>	221	
2025		220	0	<b>220</b>		
2026		222	0	<b>222</b>	-7	-2.6%

**Elementary Gr 6 Enrollments**

