



Opening Plan

2021-2022 School Year

**Williamson
Central School**

Table of Contents

Introduction	1
Guiding Principles, Health and Safety.....	2
Facilities	3
Child Nutrition	4
Transportation	5
Social-Emotional Well-Being	5
School Schedules	6
Attendance and Chronic Absenteeism	6
Technology and Connectivity	6
Teaching and Learning	7
Career and Technical Education (CTE)	7
Athletics and Extracurricular Activities	7
Special Education	7
Bilingual Education and World Languages.....	8
Staffing.....	8
Grid Detail View.....	9

Introduction

At Williamson Central School District our primary commitment is to the students and families we serve. Our priority must be keeping them safe. When the 2021-2022 school year begins, on-campus school will look a bit different than previous years due to COVID-19 and the health and safety measures that continue to evolve. This Plan will define clear guidance for the reopening of our schools and align with the regulations developed in collaboration with the New York State Department of Health and the New York State Education Department.

The areas outlined in this plan represent the myriad considerations our district will address to keep our schools open and to sustain their safe operation. It is important to note that our plan retains a strong focus on academic instruction to enhance student performance and address learning loss. An emphasis on the social-emotional needs of our students is a priority and therefore we have also addressed this within our plan.

This plan includes procedures that will be followed in the following schools:

Williamson Senior High School

5891 Route 21, Williamson, NY 14589

Williamson Middle School

4184 Miller Street, Williamson, NY 14589

Williamson Elementary School

6036 Highland Avenuem Williamson, NY 14589

To be clear, the health and safety of our students, our staff, and their families is our top priority. We have developed a plan intended to best help students and employees feel comfortable and safe on school campuses. Our reopening plan incorporates recommendations and guidance from the Centers for Disease Control and Prevention (CDC), the New York State Department of Health (NYSDOH) and the New York State Education Department (NYSED).

It is possible that we may need to have flexible learning models throughout the year due to recommendations and guidance from our partnering agencies, and stay-at-home orders from the Governor. The level of infection, the spread of the virus and response to the disease in our community will be at the forefront of decision making as we move to open our schools.

Marygrace Mazzullo, Superintendent of Schools, will serve as the district's COVID-19 Coordinator. She will serve as a central contact for schools and stakeholders, families, staff and other school community members and will ensure the district is in compliance and following the best practices per state and federal guidelines.

Of course, as with every plan being developed throughout New York State, this document is fluid and will change as necessary based on guidance/mandates from the state, CDC, and NYSED and in consideration of our families and our staff. We strongly believe the services described throughout this plan are in the best interests of our students, families, staff, and community.

Guiding Principles

The development of this plan was guided by and grounded in the following guiding principles:

- Safeguarding the health and safety of students and staff;
- Prioritizing the opportunity for all students to access education in person;
- Fostering strong two-way communication with partners, such as families, educators, and staff;

We will continue to engage in the feedback loop via surveys and open forums for community, students, staff and families.

We will continue to promote communication and engagement through consistent updates shared on multimedia platforms, training, signage and stakeholder involvement through feedback.

1. Through the development of our plan, Williamson has engaged with stakeholders and a representation of community members (e.g., administrators, faculty, staff, students, parents/legal guardians of students, and labor relation representatives) in frequent meetings, surveys and electronic correspondence.
2. Williamson has developed a communications plan for students, parents or legal guardians of students, staff, and visitors. All applicable information and updates are posted on our social media outlets, website and communicated directly to our families and staff via ParentSquare.
3. Williamson has developed training to be shared with all staff and students regarding COVID-19 protocols.
4. Williamson will encourage all students, faculty, staff, and visitors through verbal and written communication (e.g., signage) to adhere to CDC and DOH guidance.
5. Williamson will provide communication in the language(s) spoken at home among families and throughout the school community.

Health and Safety

The Williamson Central School District has designated a safety coordinator, Bethany Moore, who will continuously monitor compliance with the school's safety plan. Mrs. Moore is also our school nurse coordinator. The safety coordinator participates in committee work and works directly with all administrators in schools as well as with the district's other nurses. Our main goal is for individuals to focus on preventative actions, which includes performing self-health checks and screenings. We will follow all recommendations from the CDC and our local health department regarding masking expectations.

The Williamson Central School District will promote social distancing while maintaining existing safety requirements designed to protect students. Social distancing will be practiced during required school safety drills. Each school building has established individual plans for safety drills. Social Distancing:

- All Williamson Central School District staff will maintain social distancing whenever possible.
- Classroom seating will be arranged to maximize social distancing and to limit face-to-face contact.
- All common areas will follow DOH guidelines.
- The Williamson Central School District will ensure all required PPE is available before the reopening of schools. The Director of Facilities will monitor the PPE supply and reorder when the stockpile falls below the 30-day supply.

In the event of a positive COVID-19 case, the building administrator will notify the Superintendent who will contact the Department of Health. The Department of Health will provide guidance. Guidance will be implemented notifying necessary parties and if necessary, the transition to remote learning.

B) COVID Screening:

- All students, staff and visitors will screen for COVID 19 symptoms and will not enter school facilities if they are exhibiting any of those symptoms.

Facilities

Enhanced cleaning protocols have been established to clean and disinfect all district buildings daily. Teachers and staff will be provided with the necessary cleaning and disinfecting materials.

The Williamson Central School District will perform regular school bus disinfection measures.

The facilities section of this plan will address all of the buildings that make up the Williamson Central School District: The High School, The Middle School, The Elementary School, The District Office, The Transportation Offices/Bus Garage.

The Williamson Central School District will adhere to the following safety drill procedures:

FIRE DRILL /EVACUATION PROCEDURES

1. When alerted to a fire alarm, students and staff are expected to follow current safety protocols and exit the classroom in an orderly fashion based upon the posted fire exit map in the classroom.
2. Students and staff will proceed to their pre designated fire evacuation location outside the building while safely maintaining social distancing.
3. Administrators and staff from each building will monitor and communicate when safe and appropriate with students and staff during the drill. Designees will also obtain attendance from each program.
4. Principals or designees will utilize two way radios along with PA system to communicate and ensure all students, staff are accounted for and building is clear.
5. Once the drill is complete, the Principal or designee will announce it is safe for students and staff to re-enter the building. All students and staff are expected to re-enter the building while continuing to follow required protocols.

LOCKDOWN DRILL PROCEDURES

1. Lockdown drills will be modified during the Pandemic to maintain the safety of staff and students. Lockdown drills will be simulated in a virtual training method and/or in person instruction when appropriate by Staff and our School Resource Officer. Staff and students will be instructed to continue the same safety procedures in our Safety/Building plans Pre -Pandemic and to take the same precautions and actions in the case of an actual lockdown. The training of drills will include NYS Department of health COVID safety precautionary measures when safe and appropriate in the case of an actual lockdown.

LOCKOUT DRILL PROCEDURES

1. Lock out drills will remain the same and consistent with our current Safety /Building plan with a COVID Addendum. All Students and staff during the lockout will continue to follow all required safety protocols.

The Williamson Central School District will not make any changes or additions to facilities that would change our compliance with the 2020 NYS Uniform Fire Prevention and Building Code or the State Energy Conservation Code.

- The Williamson Central School District will ensure it is in compliance with the Visual Inspections.
- The Williamson Central School District will ensure Lead in the Water testing aligned to the period student occupancy resumes.
- The Williamson Central School District ensures all existing and new Alcohol- based hand rub dispensers are in accordance with FCNYS 202 Section 5705.5.
- The Williamson Central School District will not have the need to install dividers in points of congregation as gatherings will not be allowed.
- The Williamson Central School District assures that all project plans will be submitted to the OFP.
- The Williamson Central School District does not intend to utilize tents.
- The Williamson Central School District ensures that existing number of toilets and sink fixtures meet the minimum standards of the BCNYS
- The Williamson Central School District ensures that the existing drinking fountains meet the required codes, but during COVID-19 will follow all guidance with the use/non-use of drinking fountains.
- The Williamson Central School District ensures all ventilation systems are maintained in accordance with the specific unit handling guidelines (specific schedules are located in the maintenance management system).
- The Williamson Central School District ensures any project submissions solely to dedicated to COVID-19 will be aptly labeled,
- The Williamson Central School District ensures any plastic dividers will be in compliance with BCNYS section 2606.

Child Nutrition

A plan has been developed to ensure that there is continuity for all students in receiving meals. The protocol will continue to address all applicable health and safety guidelines. Students who are attending in-person classes and have food allergies will be provided with a location to eat their lunch free of any possible allergens aligned to COVID-19 guidelines. All food provided will follow all applicable Child Nutrition Requirements.

Our Williamson Central School District programs can allow students to eat in the classroom instead of the cafeteria or common areas. Regular practices of cleaning will follow eating in the classroom. Social distancing will occur during lunch time in each classroom.

All schools will follow SFA policies when communicating about school meal services, eligibility, options and changes in operations. All meals provided during the public health emergency will be available at no cost to all children. All communications will be provided through a variety of communication methods including website, social media, emails, robocalls, newsletters, and regular mail and translated into the languages spoken by families.

Transportation

The Williamson Central School District will conduct transportation activities that are consistent with state-issued public transit guidance and NYSED guidelines. Students and school staff must wear acceptable face coverings at all times on school buses (e.g., entering, exiting, and seated) and should maintain appropriate social distancing to the extent practicable.

The Williamson Central School District leadership will work with district transportation staff on CDC signage for the bus. If a student is displaying signs of COVID-19 during transport the bus driver will alert the administrator prior to releasing the student into the school.

Cleaning and Disinfecting

Refer to the cleaning standard operating procedures guidance for further information.

- Buses and other transportation vehicles will be cleaned and disinfected daily (focus on high touch areas).

At the end of the day clean and disinfect the entire bus

- *Daily Cleaning*
 - All trash removed
 - Floors swept and dust mopped
 - Walls and windows cleaned
- *High Touch Surfaces*
 - Bus seats and seat backs
 - Seat belts
 - Door handles, handrails
 - Driver operator area
- Cleaning and disinfecting products approved by the EPA will be used according to instructions.
- Eating and drinking will be prohibited on the bus
- Buses will be inspected to ensure cleaning/disinfecting protocols are followed on district owned and contracted buses
- All cleanings/inspections will be documented (via trackable log)

Social Emotional Well-Being

To inform the comprehensive counseling needs at each of The Williamson Central School District school/program, each has a team that focuses on the well-being of the student and ensures supports are continued during all possible instructional models. Examples of such teams with all The Williamson Central School District school/programs are MTSS teams, instructional support

teams, advisory teams, child study teams, and Building Planning Teamssshared. These teams are comprised of families, students, members of the Board of Education, The Williamson Central School District leadership team, community-based service providers, teachers, certified school counselors, and other pupil personnel service providers including school social workers and/or school psychologists.

The Williamson Central School District reopening plan addresses professional development opportunities for staff. Ongoing training has been and will continue to be provided on how to talk and support students' social and emotional well being. The trainings have supported the knowledge of developing coping and resilience skills for students and staff. Weekly resources are shared with staff and parents. These resources will continue in the upcoming school year. The Williamson Central School District has invested in creating a comprehensive support schedule focused on student social and emotional health and provided via our school wide Multi-Tiered System of Supports.

The Williamson Central School District continues to provide resources from the Trauma, Illness and Grief (TIG) consortium and has TIG trained staff at each of the schools. The TIG Consortium regularly shares resources and supports with staff and students.

What Mental Health Professionals can do in schools

- Educate staff, parents, and students on symptoms of mental health needs and how to obtain assistance
- Promote social emotional learning competency and build resilience
- Help ensure a positive, safe school environment
- Teach and reinforce positive behaviors and decision-making
- Encourage good physical health
- Help ensure access to school-based mental health supports; facilitate the expansion of school-based mental health supports

School Schedules

The Williamson Central School District will run normal, in-person school schedules at all buildings:

Elementary School Schedule: 8:40-3:20 students Bldg Open 7:30-4:00

Middle School Daily Schedule: 7:25-2:55 students; Bldg Open 7:00-4:00

High School Daily Schedule: 7:30am-3:00pm students, Bldg Open 7:00am-3:30pm

Attendance, Attendance Reporting and Chronic Absenteeism

The Williamson Central School District uses an electronic system to collect and report daily teacher/student engagement and attendance. Williamson Central School District will continue this practice.

Technology and Connectivity

Adequate access to a computing device and high-speed broadband is essential for educational equity. The Williamson Central School District will continue to determine the level of access all students and teachers have in their places of residence. This information will be collected from the

families through a survey or parent support conversations. The Williamson Central School District has acquired Chromebooks and hotspots to support the continuation of learning.

Teaching and Learning

Teaching and Learning

It is the intent of The Williamson Central School District to provide a fully in-person model for the 2021-22 school year. Plans have been created to support safe in-person instruction.

The Williamson Central School District will provide standards-based instruction; ensuring substantive daily interaction between staff and students; and clearly communicating information about instructional plans with parents and guardians.

All Williamson Central School District instructional programs will closely follow NYS Learning Standards. In all of our plans regarding COVID-19 we understand the importance of teacher and student interaction and have developed plans that will continue these interactions. Currently, teachers within our schools/programs hold valid and appropriate certifications for their teaching assignments except for those allowable under the Commissioner's regulations or Education Law.

The Williamson Central School District has an existing established communication plan shared with students and families and stakeholders regarding questions about their child/student's instruction and/or technology. Regular communication is provided using ParentSquare, Schoology, SchoolTool, emails and social media outlets. Important information is also posted on our website.

The Williamson Central School District protocol includes that if a parent is not able to reach a school staff, they may contact a building administrator. At all times the proper chain of command should be followed.

Career and Technical Education (CTE)

The Williamson Central School District will continue to support CTE instruction and transport students to their current CTE placements for learning. In district, we will continue to support our Pre-Engineering and Project Lead the Way sequences for students.

Athletics and Extracurricular Activities

The New York State Public High School Athletic Association (NYSPHSAA) will continue to follow state guidance and will work collectively with State officials to ensure high school athletics will prioritize students' safety. Williamson Central School District will continue to follow the guidance of the New York State Department of Health, State Education Department and New York State Public High School Athletic Association regarding the safe implementation of our sports program.

Special Education

It is essential that we provide a free appropriate public education in the least restrictive environment. Class sizes and therapist offices will be monitored by the administrator to make sure that all considerations for social distancing are considered. All programs, services, accommodations,

modifications, supplementary aides and services and technology will be implemented as stated in the students' IEP.

Students in the special education programs often require physical intervention and close physical proximity which does not follow social distancing guidelines. Staff will be provided additional PPE including face guards and gowns to be used during close contact with students.

Students in special education programs require specialized equipment that is often shared between students. All equipment will need to be disinfected between students by school staff.

Students will continue to be able to ride bikes, or any other supported OT/PT activity and use hallways and common spaces for sensory and therapy. Students and staff will need to continue to practice social distancing during these activities.

Bilingual Education and World Languages

The Williamson Central School District will do the following:

- provide all communications to parents/guardians of ELLs in their preferred language and mode of communication to ensure that they have equitable access to critical information about their children's education;
- ensure that all ELLs receive appropriate instruction that supports their college, career, and civic readiness, by providing them the required instructional Units of Study in their English as a New Language or Bilingual Education program based on their most recently measured English language proficiency level;
- conduct ELL identification for all students who enrolled during the 2021-22 school year within 30 days of the start of the school year; and
- recognizing that all teachers are teachers of ELLs, provide professional learning opportunities related to the instruction and support of ELLs to all educators, as required by Part 154 of the Commissioner's regulations.

Staffing

Teacher and Principal Evaluation System

All teachers and principals will continue to be evaluated pursuant to the district's approved APPR plan. The Williamson Central School District will consider whether their currently approved APPR plans may need to be revised in order to be consistent with their plans for re-opening under an in-person, remote or hybrid instructional model. School leaders will continue to attend annually required Lead Evaluator training.

Certification, Incidental Teaching and Substitute Teaching

All teachers will hold valid and appropriate certificates for teaching assignment, except where otherwise allowable under the Commissioner's regulations (e.g., incidental teaching) or education law.

Student Teachers

Student teachers from NYSED registered college or university programs can serve under the supervision of fully certified teachers in the Williamson Central School District. Student teachers will follow all of the required protocols. Student teachers will serve under the supervision of our full time certified teachers only. At no time will a student teacher be used as a teacher of record.

Williamson Central School District Opening Plan to Diminish Risk to Public Health 2021-22

This plan is subject to change with limited notice based on State, regional, and local circumstances.

This plan is effective September 7, 2021, at which time all Williamson students will fully return to in-person learning. The plan is applicable to all events and activities including the regular school day, field trips, athletics, and extracurricular activities.

In 2020-21, Williamson had zero transmissions of COVID-19 in the school setting and remained open for the duration of the school year, moving from hybrid to four days to full attendance by the end of the school year. As such, this plan was created to maximize opportunity for in-person learning, reduce the risk of school closure, and stop the spread of COVID-19. Our schools serve children under the age of 12 who are not eligible for vaccination at this time. Therefore, this plan emphasizes implementing **layered prevention strategies** to protect people who are not fully vaccinated, including students, teachers, staff, and other members of their households.

This plan was reviewed by Wayne County Public Health (WCPH) and our School District's Medical Director. The district, in conjunction with these entities, will monitor community transmission, vaccination coverage, screening testing, and occurrence of outbreaks to monitor this plan and make adjustments as necessary. The health and safety measures in this plan will apply to everyone regardless of their vaccination status.

Centers for Disease Control (CDC) Strategies	School Implementation
COVID-19 Vaccination	<p>COVID-19 vaccination is currently the leading public health prevention strategy to end the COVID-19 pandemic.</p> <p>COVID-19 vaccination is not required for school attendance. According to medical experts, the COVID-19 vaccination has a significant impact on COVID transmission.*</p> <p>*Those who are vaccinated can still contract and potentially transmit COVID-19 but symptoms tend to be mild and significantly diminish severe illness, hospitalization and death.</p>

<p>Consistent and correct mask use for students and staff</p>	<p>Minimum Expectations for Indoors*</p> <p>Given the new information from the CDC (July 27, 2021), “to maximize protection from the Delta variant and prevent possibly spreading it to others” masks are required indoors unless WCPH determines that the Level of Community Transmission is Low, and with exceptions described below. Levels of transmission are designated by the CDC and confirmed in consultation with WCPH.</p> <p>Masking is required indoors so long as WCPH determines that the Level of Community Transmission is Moderate, Substantial, or High (exceptions: core instruction with physical distance, breaks, meals). <i>NOTE: Face covering breaks are optional, and students may fully leave their face coverings on if they choose, with the exception of the meal break. When possible, face covering breaks will be staggered or occur outside or in other areas with good airflow, and where a minimum of 3 feet distance can be accomplished. Staff members will use care not to single out any student who opts to leave a mask on during face-covering breaks.</i></p> <p>For CDC Community Transmission level of Low, masks will be encouraged but not required as long as physical distance is ensured.</p> <p>Outdoors</p> <p>Masks are not required for vaccinated individuals. Masks are not required but are recommended for unvaccinated people.</p> <p>Supply of Masks</p> <p>Parents are encouraged to supply face coverings for their child’s use in the school setting. Employees are encouraged to supply a face covering for their use. PPE will be available to all students and staff members as needed.</p> <p>Transportation</p> <p>Passengers and drivers must wear a mask on school buses at all times regardless of CDC community transmission levels. Students must be wearing a face covering at the bus stop at the time of boarding the school bus. Students who do not have a face covering will not be denied transportation; they should wait until other students have boarded and will immediately be given a face covering by the bus driver. In order to ride the bus, all students must wear a face covering for the duration of the time aboard the bus. Students without authorized accommodations who refuse to wear a face covering will not be able to board the bus and the child will remain in the custody of the parent. Parents are encouraged to drop off or walk students to school to reduce density on buses.</p> <p>*This is subject to change based on local rates of transmission. Changes to protocols for level designations will only be modified per the recommendation of WCPH.</p>
---	---

Physical Distancing	<p>Minimum Expectation for all subject areas* 3' minimum distancing requirement to the extent possible</p> <p>For students having meals in cafeterias, distancing will be implemented to the extent possible. Each table will be a pod that would be subject to quarantine if deemed a close contact.</p> <p>Instruction is considered a core activity. As such, physical distancing may be diminished for shorter intervals of core activities.</p> <p>Large group assemblies where social distancing can be maintained are permissible. (In cases where transmission is substantial or high, indoor occupancy by outside agencies may not be permitted or will be limited to three feet distance.)</p> <p>*Changes to protocols for level designations will only be modified per the recommendation of WCPH</p>
Handwashing and respiratory etiquette	<p>Information will be shared with staff and students on how to follow COVID-19 protocols safely and correctly, including but not limited to hand hygiene, proper face covering wearing, social distancing, and respiratory hygiene.</p> <p>Hand hygiene stations will be maintained, including handwashing with soap, running water, and disposable paper towels, as well as an alcohol-based sanitizer containing 60% or more alcohol for areas where handwashing is not feasible.</p> <p>Should a person become ill and exhibit symptoms, they will be separated from others by at least 6' until they are picked up to leave.</p>
Ventilation	<p>Bus windows and roof hatches will be opened weather permitting</p> <p>Ventilation with fresh outside air shall be provided in all occupied spaces. The Director of Facilities or designee shall ensure that all occupied spaces will have an operable system to bring outside air into the space and that those systems are maintained to operate in accordance with the original design.</p>

<p>Staying home when sick and getting tested</p>	<p>Parents are responsible for screening student health every day prior to a student boarding a school bus or entering a building. The screening must include a temperature check and assessment of illness-related symptoms. Parents allowing a child to board a school bus or enter the school building for the instructional program are verifying that a health screen has been completed and that the child has not:</p> <ul style="list-style-type: none"> • Knowingly been in close or proximate contact in the past 10 days with anyone who has tested positive through a diagnostic test for COVID-19 or who has or had symptoms of COVID-19; • Tested positive through a diagnostic test for COVID-19 in the past 10 days; • experienced any symptoms of COVID-19, including a temperature of greater than 100°F, in the past 10 days; and/or • traveled internationally or from a state with widespread community transmission of COVID-19 per New York State Travel Advisories https://coronavirus.health.ny.gov/covid-19-travel-advisory <p>See Appendix B to reference: <i>Can my child go to school today?</i></p> <p>Parent submission of a daily health screen is not required.</p>
<p>Contact tracing, in combination with isolation and quarantine*</p>	<p>Seating Charts for Purposes of Contact Tracing Students will be assigned a seat on a bus. Students will not be able to choose their own seat. Seating charts must be available for buses, cohorts, lunches, and other such pods.</p> <p>Contact Tracing and Positive Results There will be a contact tracing protocol administered by WCPH.</p> <p>The School Nurse Coordinator will immediately notify the local health department about any case of diagnostic test results that are positive for COVID-19.</p> <p>WCPH will not disclose personal information for those testing positive for COVID-19. Relevant parties will be notified appropriately by WCPH.</p>

	<p>Students who screen positive for COVID-19 symptoms can only return to school when approved by school medical authorities and in accordance with the protocols of the local health department and the school district. Any return-to-school for a confirmed positive will require signed documentation from a healthcare provider that includes negative COVID-19 testing, and symptom resolution/release from isolation.</p> <p>In order to limit contacts and reduce risk of transmission in the school, visitors in buildings will continue to be limited. Parents should continue to use designated drop-off/pick up procedures for each building and avoid entering the buildings. Virtual options will be encouraged.</p> <p>For CDC transmission level designations at substantial and/or high, school buildings may initiate voluntary testing in concert with WCPH. Testing for students would only be performed with parental consent.</p> <p>*The likelihood of having to quarantine is substantially diminished for those who are vaccinated, wear a mask, and physically distance.</p>
Cleaning and disinfection	<p>The district will adhere to hygiene, cleaning, and disinfection requirements from the CDC.</p> <p>Students and staff may disinfect personal equipment (e.g., desk, workstations, supplies) at intervals throughout the day as appropriate.</p>
Instructional Model	<p>Per the NYS Education Department, the district is expected to prioritize a return for all students to in-person instruction.</p> <p>All school buildings are staffed with school counselors, school psychologists, and community agency social workers/counselors. Students will be supported by a professional in the counseling office or other trained staff members. Staff member training will be offered by the Social-Emotional Learning (SEL) team regarding talking with, and supporting students during and after the COVID-19 public health emergency. SEL teams with respective representatives are in place to employ existing practices for coping and resilience skills. Appropriate assistance to individuals with disabilities or other health care needs will be provided.</p>

Student Absence from Instruction Due to Illness

When your child is absent from school for illness or any other reason, parents or guardians must notify the School Health Office. Please remember to send in a written note of explanation when your child returns to school.

Missed work due to absence can be requested from the classroom teacher. For students in grades 6-12, call the Counseling Office prior to 10:00 AM to request missed work.

School Closure

Should a complete school closure be warranted as determined by the local health department in consultation with the school superintendent and district's medical director, the identified communication protocols will be used to provide information to families as aligned to the District's existing safety and emergency plans. A transition to fully remote learning will require at least 3 days and no more than 5 days of planning time where remote instruction may not occur.

Homeschooling (home instruction)

Homeschooling is governed by the regulations of the New York State Education Department. Parents wishing to homeschool a child must follow the published guidelines, including the submission of an intent to homeschool and an Individualized Home Instruction Plan (IHIP). The Stated Education Department has published a Q&A document to support parents in the homeschooling process at:

<http://www.p12.nysed.gov/sss/homeinstruction/homeschoolingganda.html>.

Parents must submit a letter of intent to homeschool according to the established timeframe. Letters of intent are to be emailed to: Agnes Elias, District Registrar at: aelias@williamsoncentral.org or by mail: WCSD District Office, PO Box 900, Williamson, NY, 14589. Once the original letter of intent has been received a school official will contact the family.

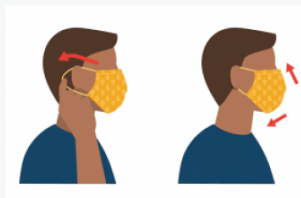
APPENDIX A

How To Wear Cloth Face Coverings

<https://www.cdc.gov/coronavirus/2019-ncov/prevent-getting-sick/how-to-wear-cloth-face-coverings.html>

Wear your Face Covering Correctly

- Wash your hands before putting on your face covering
- Put it over your nose and mouth and secure it under your chin
- Try to fit it snugly against the sides of your face
- Make sure you can breathe easily

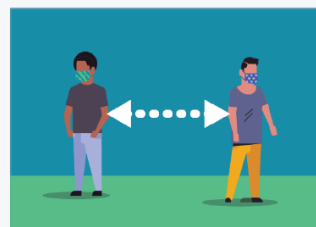


Wear a Face Covering to Protect Others

- Wear a face covering that covers your nose and mouth to help protect others in case you're infected with COVID-19 but don't have symptoms
- Wear a face covering in public settings when around people who don't live in your household, especially when it may be difficult for you to stay six feet apart
- **Don't** put the face covering around your neck or up on your forehead
- **Don't** touch the face covering, and, if you do, wash your hands or use hand sanitizer to disinfect

Follow Everyday Health Habits

- Stay at least 6 feet away from others
- Avoid contact with people who are sick
- Wash your hands often, with soap and water, for at least 20 seconds each time
- Use hand sanitizer if soap and water are not available



Take Off Your Cloth Face Covering Carefully, When You're Home

- Untie the strings behind your head or stretch the ear loops
- Handle only by the ear loops or ties
- Fold outside corners together
- Place covering in the washing machine (learn more about [how to wash cloth face coverings](#))
- Be careful not to touch your eyes, nose, and mouth when removing and wash hands immediately after removing.

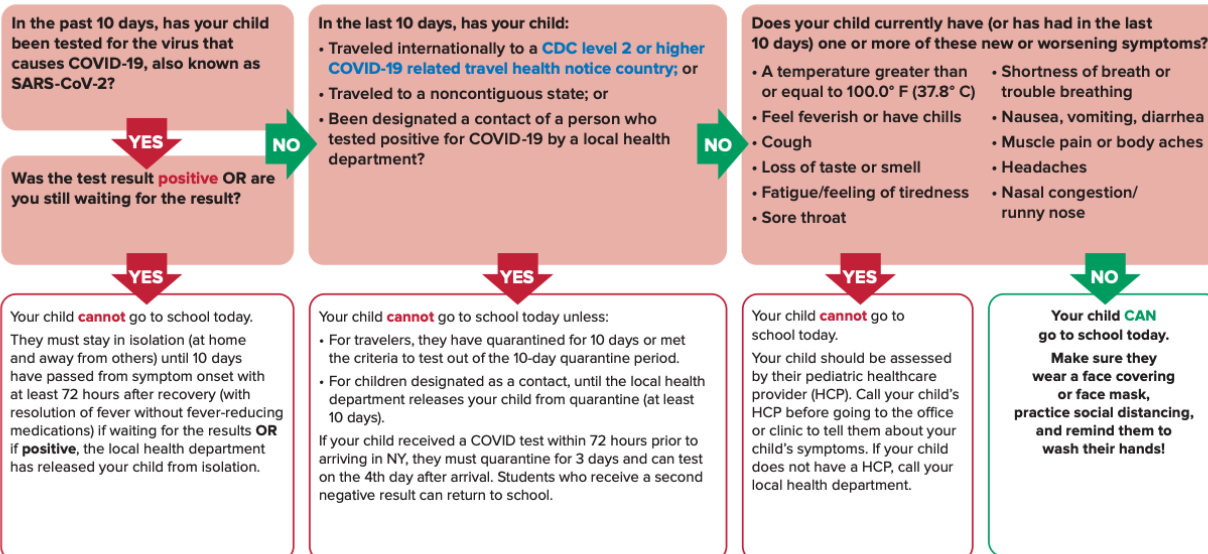
APPENDIX B



New York State Department of Health (NYSDOH) Pre-K to Gr 12 COVID-19 Toolkit

NYSDOH COVID-19 In-Person Decision Making Flowchart for Student Attendance

Can My Child Go To School Today?



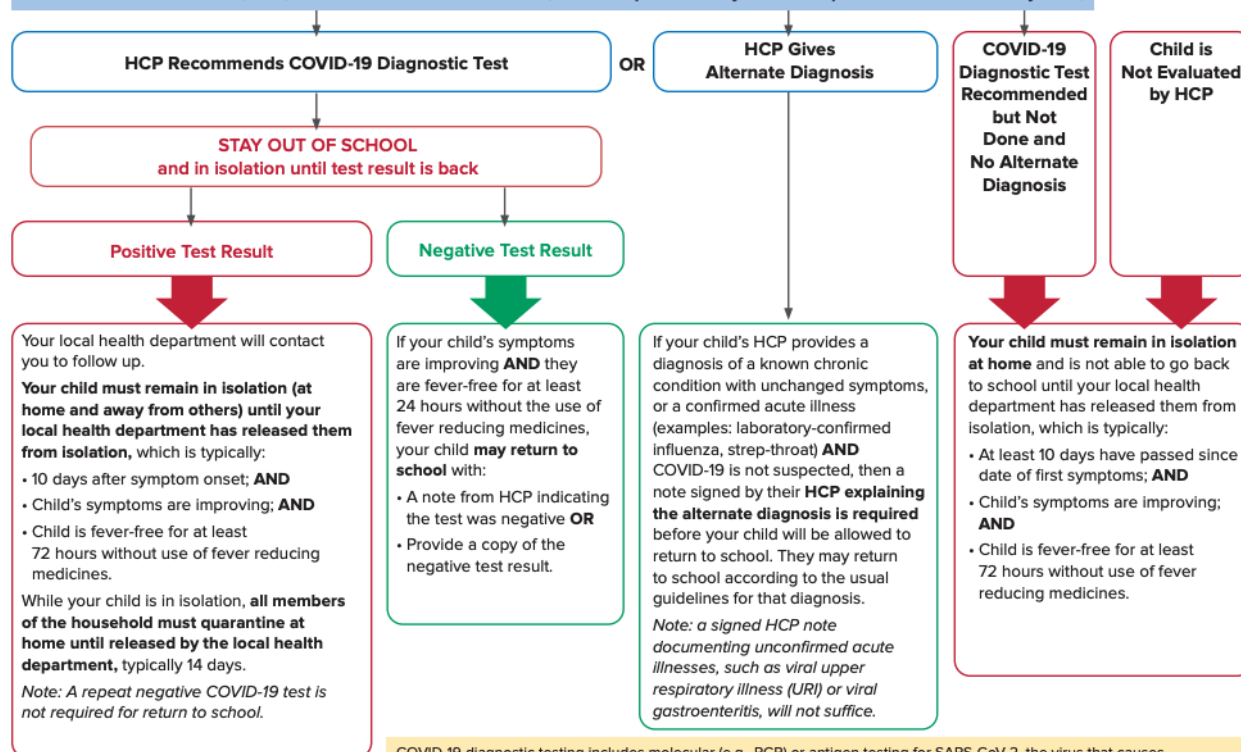
Report absences, symptoms, and positive COVID-19 test results to your child's school.

SEEK IMMEDIATE MEDICAL CARE IF YOUR CHILD HAS:

- Trouble breathing or is breathing very quickly
- Prolonged fever
- Is too sick to drink fluids
- Severe abdominal pain, diarrhea or vomiting
- Change in skin color - becoming pale, patchy and/or blue
- Racing heart or chest pain
- Decreased urine output
- Lethargy, irritability, or confusion

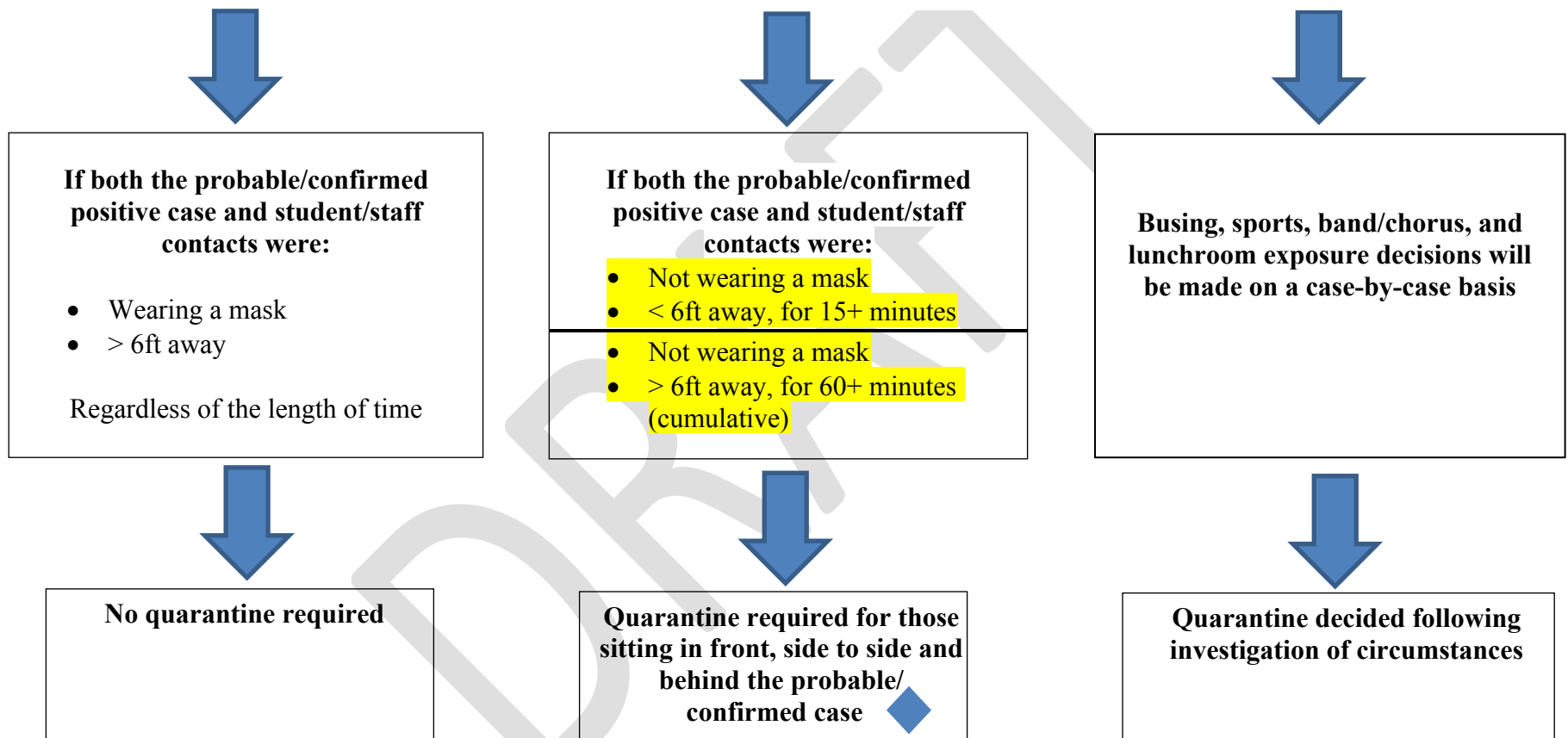
My child has COVID-19 symptoms. When can they go back to school?

HEALTHCARE PROVIDER (HCP) EVALUATION FOR COVID-19 (can be in-person or by video/telephone as determined by HCP)



COVID-19 diagnostic testing includes molecular (e.g., PCR) or antigen testing for SARS-CoV-2, the virus that causes COVID-19. Diagnostic testing may be performed with a nasopharyngeal swab, nasal swab, or saliva sample, as ordered by the health care provider and per laboratory specifications. At times, a negative antigen test will need to be followed up with a confirmatory molecular test. Serology (antibody testing) cannot be used to rule in or out acute COVID-19.

A probable or laboratory confirmed COVID-19 positive staff/student is present in school during the infectious period of 48 hours prior to onset of symptoms *or* 48 hours prior to a positive test result



If at any time during isolation of a positive case, another staff/student who had proximate contact during the case's infectious period becomes symptomatic, the entire classroom will be quarantined, regardless if masked.

Per the CDC: People who have tested positive for COVID-19 within the past 3 months and recovered do not have to quarantine or get tested again as long as they do not develop new symptoms. [COVID-19: When to Quarantine | CDC](https://www.cdc.gov/media/releases/2020/s1119-covid-quarantine.html)



Williamson Central School

As per the State Department of Health, it is critical that you perform a self-assessment and answer the following questions before entering any building in the Williamson Central School District

1. Have you knowingly been in close or proximate contact in the past 10 days with anyone who has tested positive for COVID-19 or who has or had symptoms of COVID-19?
2. Have you tested positive for COVID-19 in the past 10 days?
3. Have you experienced any symptoms of COVID-19 including a temperature of or greater than 100.0 F in the past 10 days?
4. Have you traveled internationally to a CDC level 2 country?

If the answer to any of these questions is YES, you should not enter the site and contact your health care provider.