

Schedule

November

- Begin to engage stakeholders
- Start collecting technical data
- Launch website

December

- Share analysis findings with project committee
- Outreach campaign
- Prepare for public meeting

Winter
Holiday

January

- Share analysis findings with public
- Prepare for public meeting

February

- Solicit input on planning concepts
- Student engagement

March

- Conduct public meeting
- Finalize concept and scope

We are here

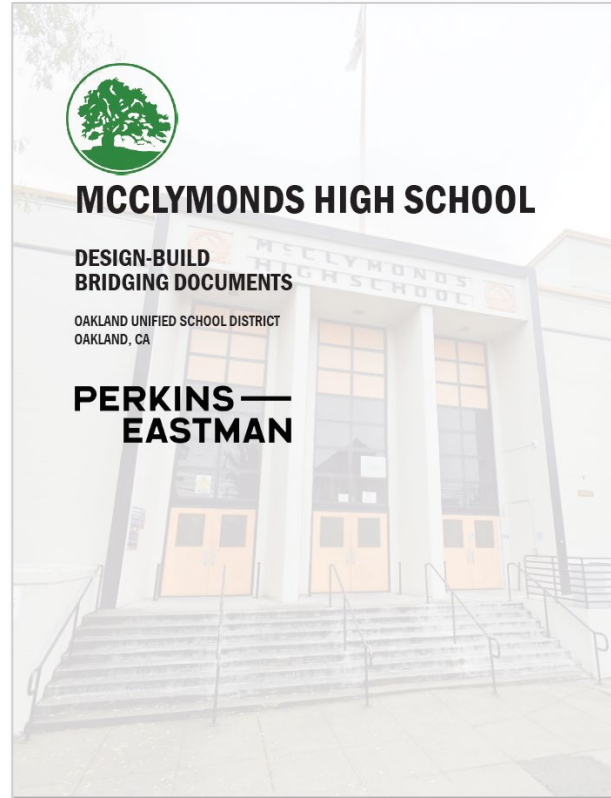


Bridging Documents: Design Criteria

Guiding Principles



**Analysis: Site
Constraints &
Existing Conditions**



Budget



**Future McClymonds
Program**



Guiding Principles: Scenario Evaluation Criteria



Schedule and Risk

1

Minimize risks to the project's schedule and budget from unknowns or unpredictable scope features



Facility Conditions

2

Address deficiencies related to structural, seismic, ADA, Title 24, environmental and other issues.



Space Program and Capacity

3

Support school's educational program, provide space for a community school, and allow for future growth.



Access and Flow

4

Provide the optimal building and campus flow and adjacencies. Ensure access points are clear, secure, and accessible.



Health, Wellness, and Sustainability

5

Optimize student and staff health and wellness. Pursue sustainable and resilient solutions.



School Image & Identity

6

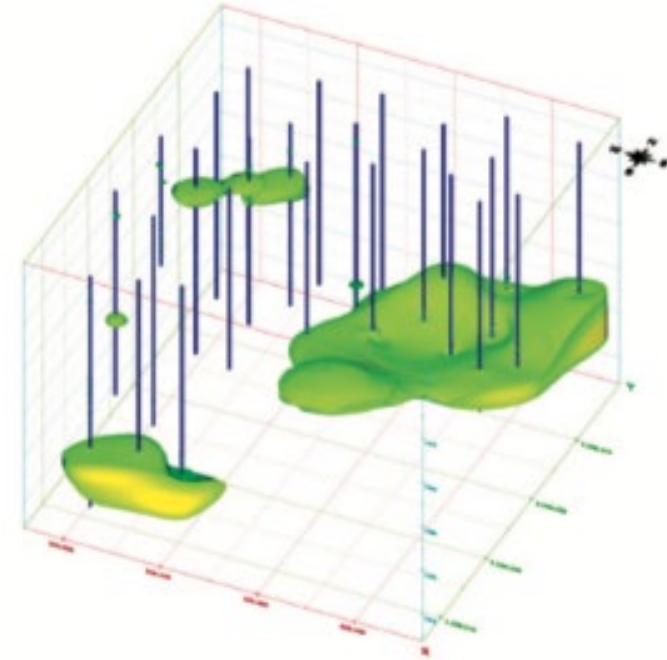
Strengthen the student experience of inclusion, school community and school pride. Present an inviting community interface.

Analysis: Site Constraints & Building Conditions

- TCE/Groundwater Contamination
- Lead in Water Supply
- Seismic Safety + Building Systems
- Recent Investments
 - Library
 - Health Clinic/Teen Tech Center
 - Basketball Court



Other schools have mitigated this issue with an engineering solution: foundation sealing and ongoing monitoring.

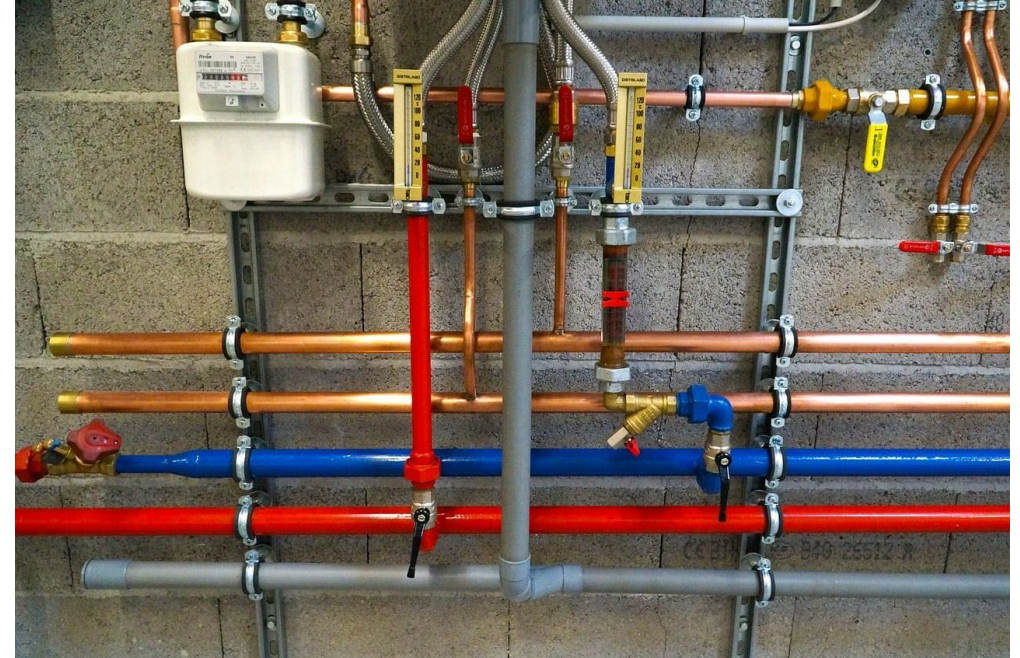


Analysis: Site Constraints & Building Conditions

- TCE/Groundwater Contamination
- Lead in Water Supply
- Seismic Safety + Building Systems
- Recent Investments
 - Library
 - Health Clinic/Teen Tech Center
 - Basketball Court



Immediate issues resolved. Full replacement preliminary cost estimate: \$3-5M. Additional analysis is required.

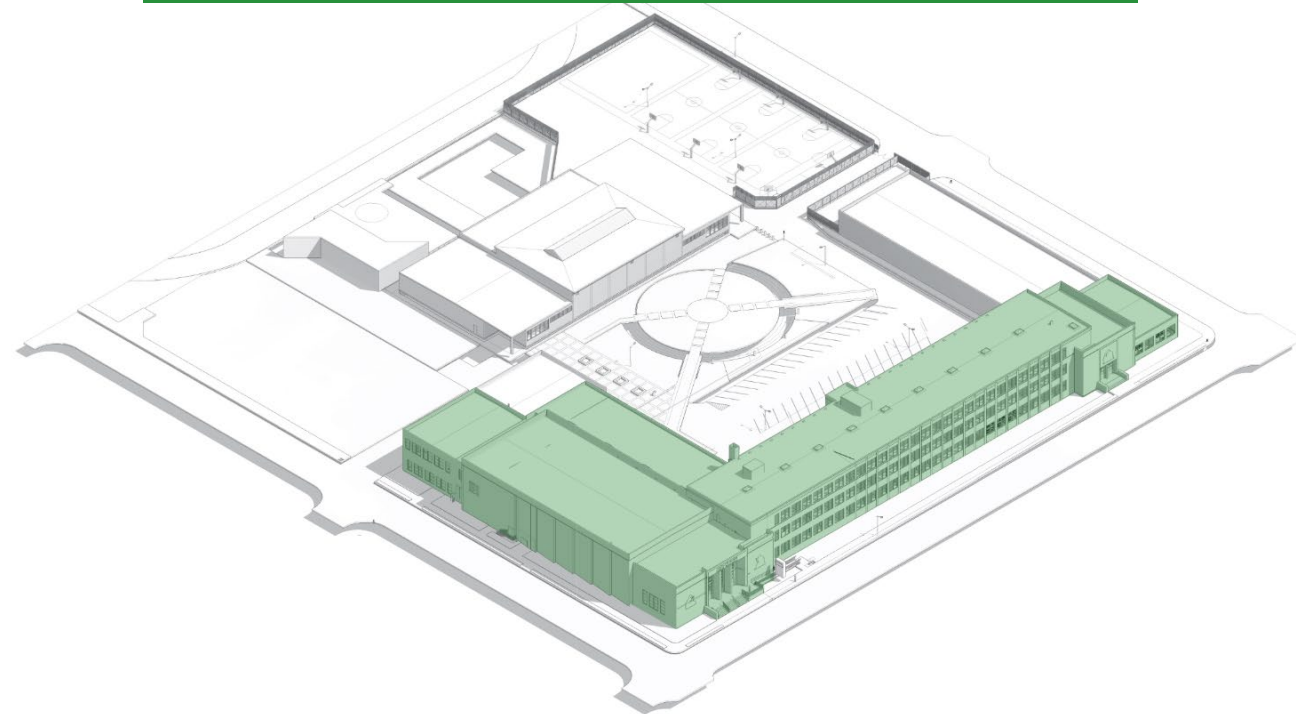


Analysis: Site Constraints & Building Conditions

- TCE/Groundwater Contamination
- Lead in Water Supply
- Seismic Safety + Building Systems
- Recent Investments
 - Library
 - Health Clinic/Teen Tech Center
 - Basketball Court



Further analysis is required. It may be more cost effective to replace buildings than to reinforce and update all systems. The main classroom building and auditorium are structurally a single entity.

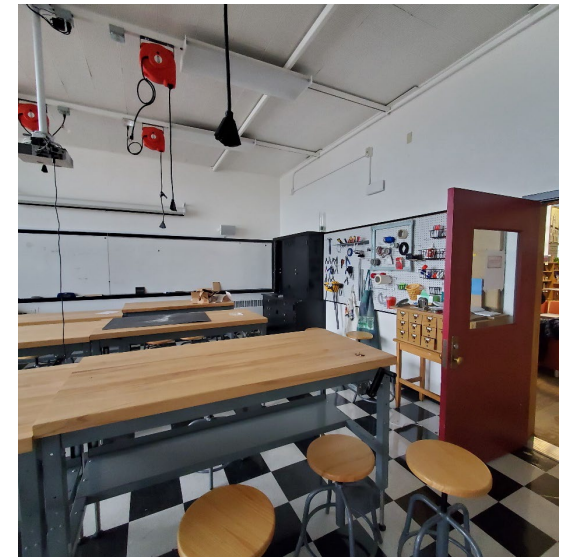


Analysis: Site Constraints & Building Conditions

- TCE/Groundwater Contamination
- Lead in Water Supply
- Seismic Safety + Building Systems
- Recent Investments
 - Library
 - Health Clinic/Teen Tech Center
 - Basketball Court

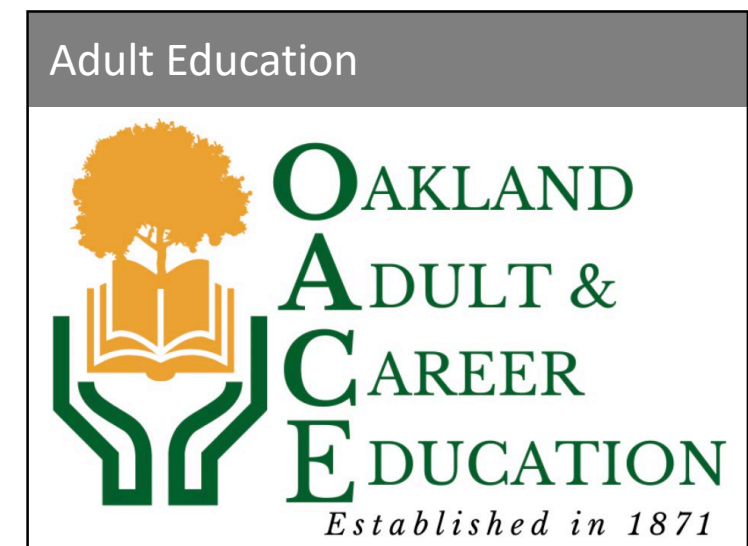


Further analysis is required, but it is possible that buildings with recent investments may not be able to be cost-effectively reinforced. It may be necessary to plan for relocation.



McClymonds High School: Other Programs

- What role in the future?
- Locations?
- Public access needed?
- Other programs not currently on site to include?



Listening Campaign: Next Steps

- Public meeting: March 1
 - Methods (hybrid in-person and online)
- Engagement with students
- Website launched



Interactive Virtual Workshops



In-person Workshops



Public Community Meetings



Online Surveys and Polls