

Cedar Hill

Independent School District

Draft Rezoning Plan 2023/2024



Enrollment Capacity of Cedar Hill Schools

Total Enrollment Capacity (With Bray)	11,180	
Total Enrollment Capacity (Without Bray)	10,850	
High Pointe ES Capacity	792 @ 22:1 ratio	31 Regular Classrooms
Lake Ridge ES Capacity	676 @ 22:1 ratio	26 Regular Classrooms

Architectural Designs are at 20:1





2023-2024 Projection Comparison

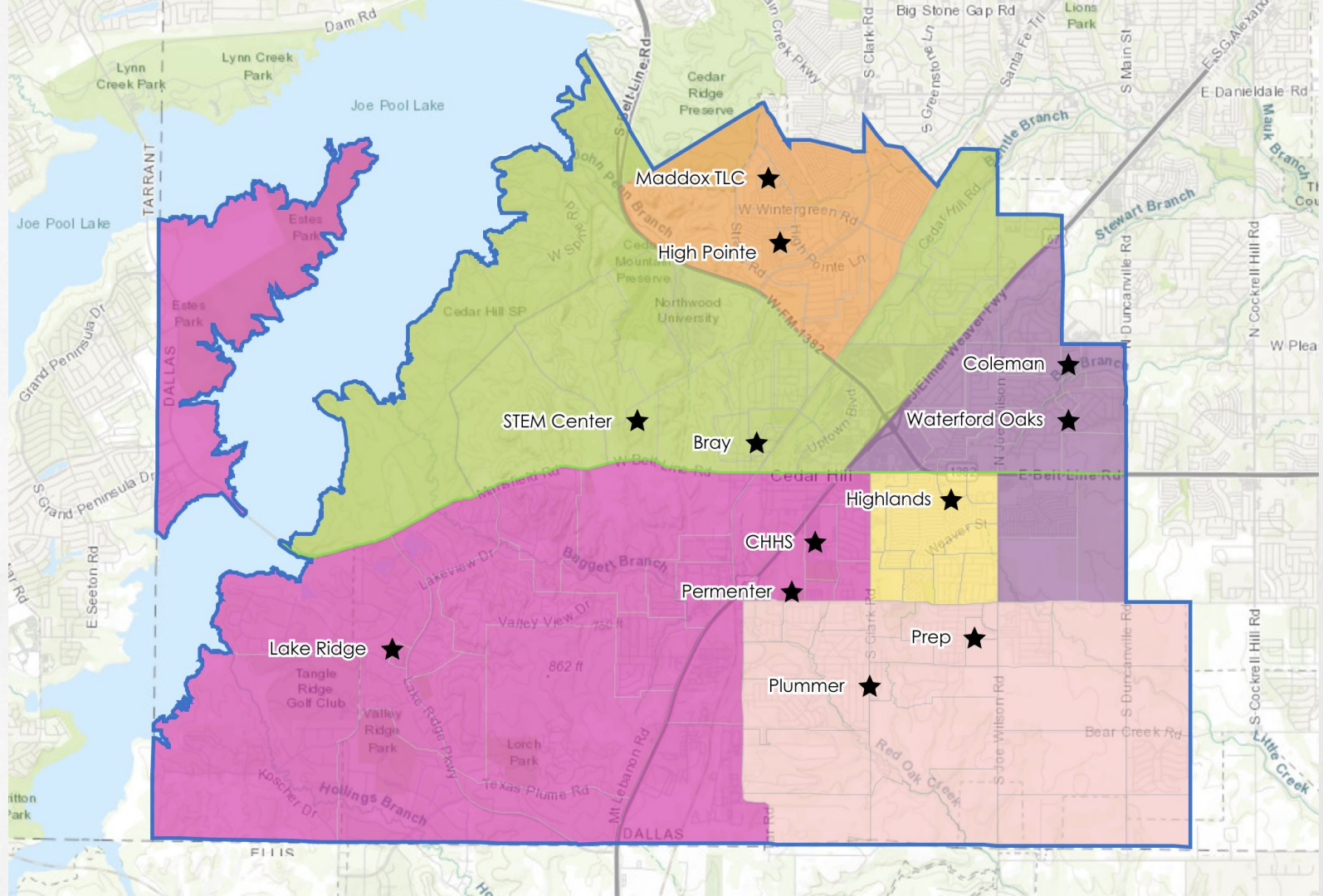


Campus	Projection	Campus Capacity*
High Pointe ES	308	750
Lake Ridge ES	394	600
Bray ES	237	300

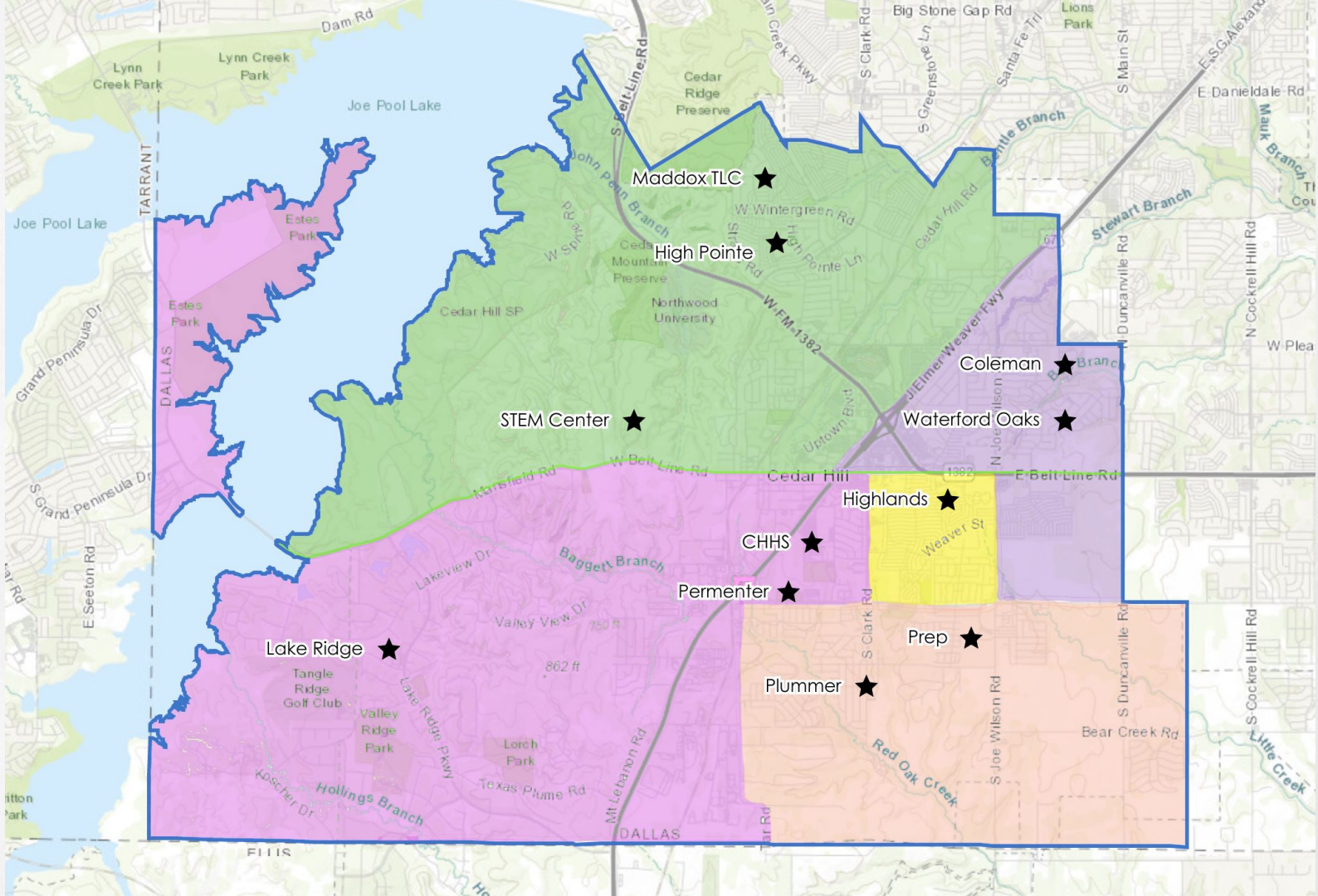
- Currently High Pointe's enrollment consumes 41% of the building capacity;
- Currently, Lake Ridge's enrollment consumes 65% of the building capacity;
- If all 237 projected Bray scholars are moved to High Pointe, enrollment would consume 73% of the buildings capacity;
- If we split scholars between Lake Ridge & High Pointe, we would need to identify attendance zone first and determine how many scholars would attend each campus.

*Slide 27 of Zonda Demographic Report

Current Attendance Zones



DRAFT Elementary Plan



Draft Proposal for Rezoning 2023/2024

1. Rezone Bray for High Pointe
2. All in district transfer students will have and opportunity to apply for a new campus starting April 1st. If they are not accepted into the new campus they will be moved to High Pointe.
3. All Fine Arts Choice students currently enrolled in Fine Arts at Bray will be moved to the new Fine Arts Program at High Pointe. They will not have to reapply.
4. Any student currently at Bray that wants to apply for a Choice program will have an opportunity to apply starting March 3rd.

