

# LINES OF COMMUNICATION

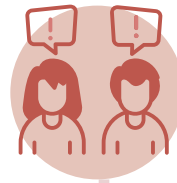
Here at EAB we value effective communication between parents and school personnel. In fact, we know that when there is a positive flow of information between home and school, and vice versa, everyone benefits.

The following is an attempt to assist parents in deciding who to approach at EAB if they have a query or a concern.



## ISSUE, QUERY OR CONCERN

- My child's academic progress
- My child's assessments or grades
- My child does not understand something



## EAB PERSONNEL

- The child's teacher  
(If a parent is not satisfied with their initial communication with a teacher they should approach the appropriate principal)

- My child is having problems with friendships
- My child is being teased
- My child is worried or anxious
- Our family is having problems that may be affecting my child
- My child does not want to come to school
- I am concerned about my child's placement in a class
- My child needs support with career planning (HS)
- My child is new to EAB and needs help transitioning



- LS Counselors:  
Karen Gonzalez | [kgonzalez@eabdf.br](mailto:kgonzalez@eabdf.br)  
Lilian Rosa | [lrosa@eabdf.br](mailto:lrosa@eabdf.br)
- HS Counselors:  
Michaella Beatty | [mbeatty@eabdf.br](mailto:mbeatty@eabdf.br)  
College Counselor:  
Karen Hafner | [khafner@eabdf.br](mailto:khafner@eabdf.br)
- MS Counselor:  
Clara Andaló | [candalo@eabdf.br](mailto:candalo@eabdf.br)
- LS Principals:  
Beth Overby | [boverby@eabdf.br](mailto:boverby@eabdf.br)  
Angela Collins | [acollins@eabdf.br](mailto:acollins@eabdf.br)
- MS Principal:  
Rebekah Adamek | [radamek@eabdf.br](mailto:radamek@eabdf.br)
- HS Principal:  
David Bair | [dbair@eabdf.br](mailto:dbair@eabdf.br)

## ISSUE, QUERY OR CONCERN

- My child is going to be absent for longer than 5 school days



## EAB PERSONNEL

- LS Principals:  
Beth Overby | [boverby@eabdf.br](mailto:boverby@eabdf.br)  
Angela Collins | [acollins@eabdf.br](mailto:acollins@eabdf.br)
- MS Principal:  
Rebekah Adamek | [radamek@eabdf.br](mailto:radamek@eabdf.br)
- HS Principal:  
David Bair | [dbair@eabdf.br](mailto:dbair@eabdf.br)

- The custody arrangements for my child have changed



- LS Principals:  
Beth Overby | [boverby@eabdf.br](mailto:boverby@eabdf.br)  
Angela Collins | [acollins@eabdf.br](mailto:acollins@eabdf.br)
- MS Principal:  
Rebekah Adamek | [radamek@eabdf.br](mailto:radamek@eabdf.br)
- HS Principal:  
David Bair | [dbair@eabdf.br](mailto:dbair@eabdf.br)
- Business Director:  
Elizabeth Sullivan | [esullivan@eabdf.br](mailto:esullivan@eabdf.br)
- Business Office:  
[businessoffice@eabdf.br](mailto:businessoffice@eabdf.br)

- Any issue, query or concern about my child's participation in the IB (International Baccalaureate Program)



- IB Coordinator:  
Maria Sieve | [msieve@eabdf.br](mailto:msieve@eabdf.br)

- My child has a problem with his/her laptop
- My child cannot connect to the school's network
- My child has some I.T.-related queries



- Technology Director:  
Vamshi Mugatha | [vmugatha@eabdf.br](mailto:vmugatha@eabdf.br)
- Technology Support:  
[support@eabdf.br](mailto:support@eabdf.br)

## ISSUE, QUERY OR CONCERN

## EAB PERSONNEL

- I have some questions about the nature of any of EAB's learning programs



- Director of Teaching and Learning: Andy Jones | [ajones@eabdf.br](mailto:ajones@eabdf.br)

- I would like to discuss my child's MAP results



- Director of Teaching and Learning: Andy Jones | [ajones@eabdf.br](mailto:ajones@eabdf.br)

- I have a question about the Lower School's Club EAB and Speed Sports program (LS after school activities)
- I have a question about the Upper School's activities program



- Activities & Athletics Director: John Powell | [jpowell@eabdf.br](mailto:jpowell@eabdf.br)
- Activities Supervisor: Andréa Borges | [aborges@eabdf.br](mailto:aborges@eabdf.br)

- I have a question about the Upper School's sports program



- Activities & Athletics Director: John Powell | [jpowell@eabdf.br](mailto:jpowell@eabdf.br)

- I have a question or concern about the school's Brazilian program (Portuguese, PLL, BSS, or ISS)



- Brazilian Program Director: Denise Turati | [dturati@eabdf.br](mailto:dturati@eabdf.br)

- I have a question or concern about my school fees



- Business Director: Elizabeth Sullivan | [esullivan@eabdf.br](mailto:esullivan@eabdf.br)
- Business Office: [businessoffice@eabdf.br](mailto:businessoffice@eabdf.br)



## ISSUE, QUERY OR CONCERN

- I'm not receiving emails from the school



## EAB PERSONNEL

- Communication Department  
[communication@eabdf.br](mailto:communication@eabdf.br)

- I have a question or concern about school policy and/or future directions



- Head of School:  
Grace McCallum | [gmccallum@eabdf.br](mailto:gmccallum@eabdf.br)