



**Elizabethtown
Area
School
District**



2012

Annual Report to the Community

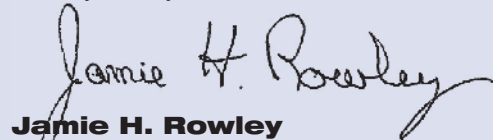
Message from the Board President

On behalf of the Board of School Directors, it is an honor and a privilege to serve on the school board for this outstanding school system. As the elected representatives for the community concerning public education, we spend countless hours each month working with our administration to move the district forward for the benefit of our present-day students and future generations yet to come. The **2012 Annual Report to the Community** affords us the opportunity to pause and reflect on our recent past to appreciate and celebrate the progress that has been made as well as identify areas to seek improvement.

We encourage you to join us in this reflection by reading this publication. We are proud of our 289 professional staff members, 210 support staff members, and 23 administrators and the work they do each day to ensure our students are learning. There is nothing more important than the education of our young people. We are equally proud of our students who come to school each day ready to accept the challenge and responsibility for their learning. As you flip through the pages of this publication, we trust that you will share our enthusiasm for our community's school system and its students, faculty, and staff.

The district publishes this report to share with our stakeholders our accomplishments and opportunities. While our administration, staff, and school directors have an intimate knowledge of what is happening in our schools, many community members may not be aware of how their support of our schools has helped the district in its efforts to educate our future leaders. Whether it is volunteering, cheering on a sports team, attending a concert, or simply paying your taxes, we are grateful to have a community that values public education. I hope you enjoy reading this annual report and know that your support has contributed to the successes detailed within.

Thank you for your interest in our schools,



Jamie H. Rowley
President, Board of School Directors

2011-2012 Board of Education

Jamie H. Rowley	<i>President</i>
Terry L. Seiders	<i>Vice President</i>
Kay J. Ardner	<i>Director</i>
Louisa M. Clark	<i>Director</i>
Robert S. Cronin	<i>Director</i>
Craig M. Hummer	<i>Director</i>
M. Caroline Lalvani	<i>Director</i>
Michelle J. Pelna	<i>Director</i>
Jeffrey S. Shank	<i>Director</i>

School Board Meeting Information

The board of education invites stakeholders to stay informed about the governance of the district by attending school board meetings.

Meetings are typically held on the second and third Tuesday of every month beginning at 7:30 p.m.

The public is invited to offer public comment at both sessions.

Meeting agendas and minutes can be found on the district website at www.etownschools.org.



Message from *the Superintendent*

Each year, the Elizabethtown Area School District publishes an annual report to inform our community about the academic achievement, student and staff composition, and finances of the district. We do so because we believe that a well-informed public is vital to fostering a strong and vibrant school district that works in partnership rather than in isolation with its community. We hope this report lends some insight to our stakeholders – young and old – on how we are using your tax dollars to build a first-rate school system as well as help you to understand better the successes and challenges of the district.

Each day our students walk through our doors, you are entrusting us with the great responsibility of teaching your child. In Elizabethtown, our daily focus is to prepare our students to “live, learn, and thrive in a global community!” As such, we have established high expectations for our faculty and staff to ensure our students come to school each day to an environment that is warm, inviting, and conducive to learning. We are constantly striving to foster a “no excuse” mindset in every area of our school system. Rest assured in knowing that our commitment to high standards will not waver. Even as we face the ongoing financial challenges confronting public education all across our state and the nation, we will remain committed to ensuring our focus remains where it should be - on our students.

Through this annual report to the community, we are proud to share the progress of our students. Whether it is scoring above state averages on the Pennsylvania System of School Assessment, sending our students off to competitive post-secondary institutions, or spending our money where it counts – on student learning, we have accomplished a lot this past year. However, we are strong believers that our students’ success is not the result of our school system alone. An informed public and strong partnership with our community has been essential to our success. I re-invite you to join us in our work as we seek to grow and improve our district for the benefit of our future leaders. I thank you in advance for your support as we accept the challenge of balancing our educational priorities with fiscal responsibility.

As superintendent of schools, I encourage you to read this report and stay informed on how your community’s school district is doing in meeting its goal of preparing our students to live, learn and thrive in a global community. For more information on our school district, I invite you to visit our website at www.etownschools.org. There you will find a wealth of information on our district including the positive accomplishments of our students and staff, our district and school report cards, and our data portfolio that provides an abundance of statistical information on our school system.

Sincerely,

A handwritten signature in black ink that reads "Michele M. Balliet". The signature is written in a cursive, flowing style.

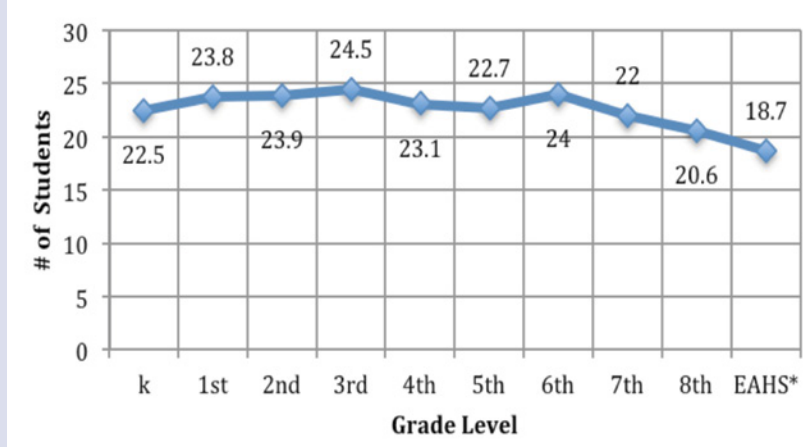
Michele M. Balliet
Superintendent of Schools



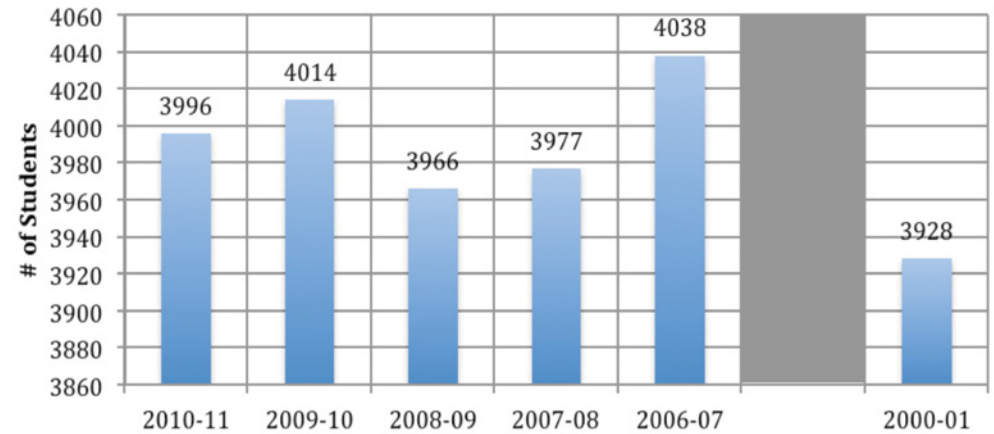
E-town by the Numbers

EASD is committed to meeting the needs of our diverse student body. Our faculty, support staff, and administration work closely with our families and community partners to ensure that high expectations are held for every student and that all students receive the targeted support they need.

2010-2011 Average Class Size



Enrollment History



2010-2011 Attendance Rates

PA Target – 90%

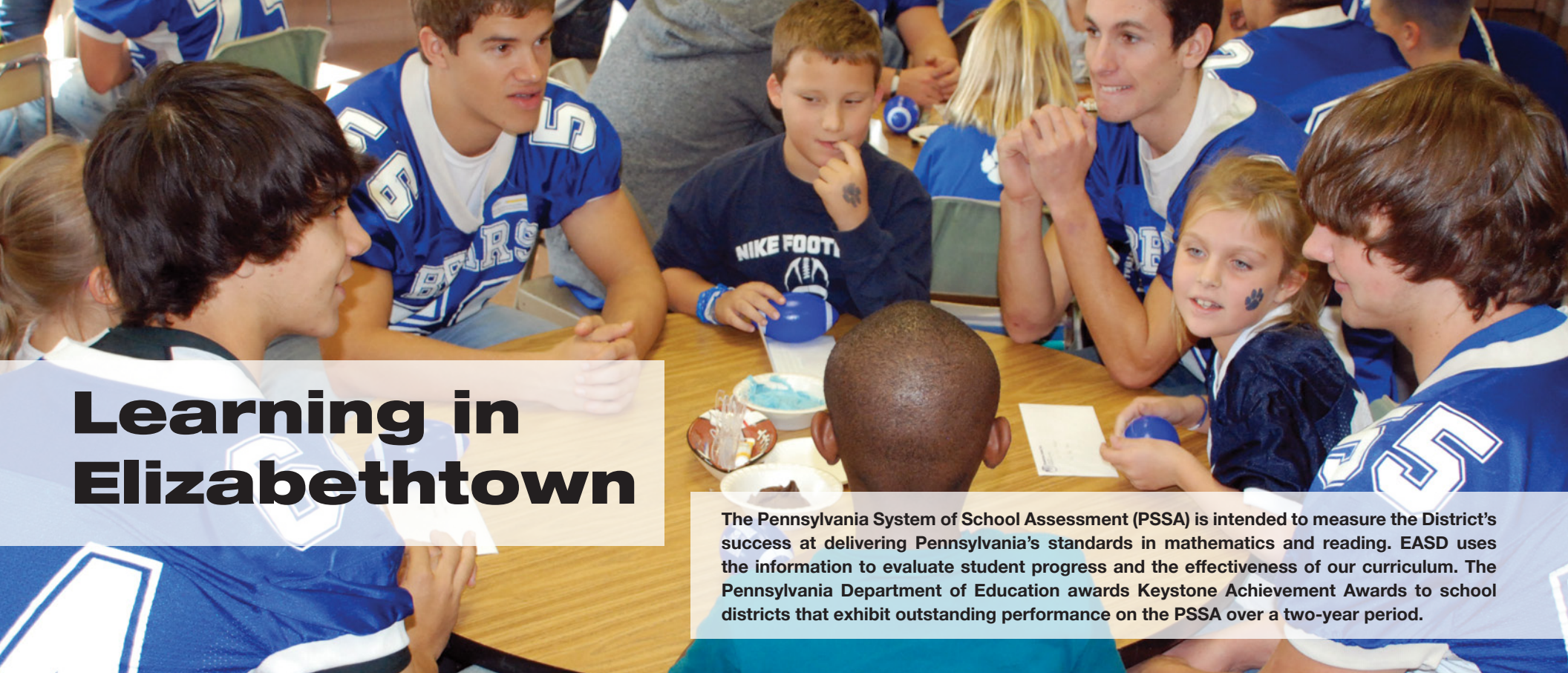
Level	Year	Attendance Rate
Elementary	2010-11	96.19%
	2009-10	95.67
	2008-09	95.71
Middle	2010-11	95.24
	2009-10	95.17
	2008-09	95.07
High	2010-11	94.09
	2009-10	93.99
	2008-09	93.76

Quick Fact

- 3,996 total students
- 1,778 elementary
- 880 middle school
- 1,338 high school

Student Demographics

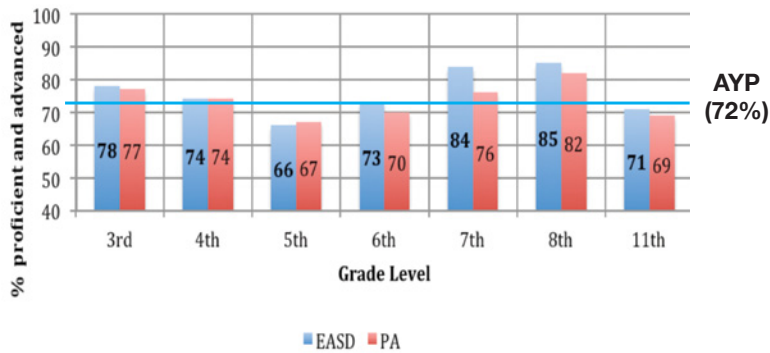
	2010-11	2009-10	2008-09
American Indian/Alaska Native	2	4	1
Asian/Pacific Islander	43	43	46
Black (Non-Hispanic)	76	61	59
Hispanic	152	153	144
White (Non-Hispanic)	3,754	3,750	3,737
Free/Reduced Lunch	773	755	---
Special Education	520	521	544
Gifted Education	208	197	191
Career and Technology School	149	145	143
English as a Second Language	49	52	47
Homeless Enrollment	33	13	16



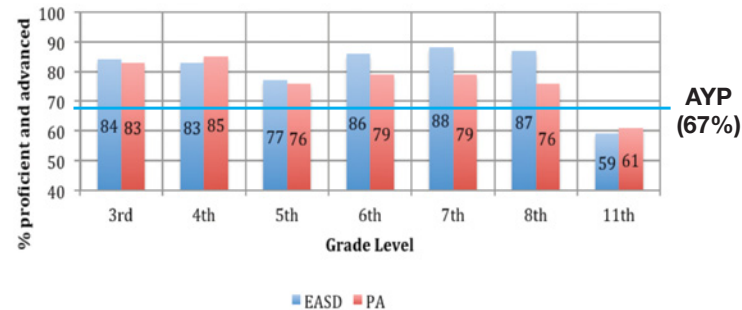
Learning in Elizabethtown

The Pennsylvania System of School Assessment (PSSA) is intended to measure the District's success at delivering Pennsylvania's standards in mathematics and reading. EASD uses the information to evaluate student progress and the effectiveness of our curriculum. The Pennsylvania Department of Education awards Keystone Achievement Awards to school districts that exhibit outstanding performance on the PSSA over a two-year period.

2010-2011 PSSA Reading



2010-2011 PSSA Mathematics



Point of Pride

For the 7th consecutive year, Elizabethtown Area schools were honored with Keystone Achievement Awards. Since the program's inception seven years ago, E-town has a combined total of 44 awards out of a maximum of 49 possible.

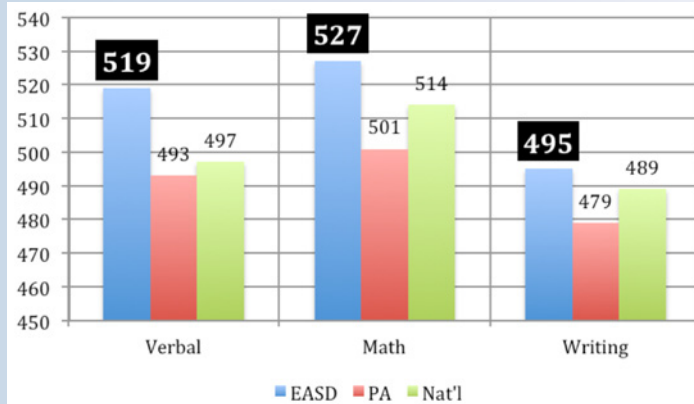
Advanced Placement Testing

Quick Fact

EAHS administered 170 Advanced Placement (AP) exams in 2011. Eight-five percent qualified for college credits (a score of three or better) and seventeen percent of students received the highest possible score.

2010-11 Subject	Score					% 3 or higher
	5	4	3	2	1	
Calculus AB	6	7	2	3	4	68
Calculus BC:AB Subscore	2	4	3	0	0	100
Calculus BC	1	1	6	1	0	89
English Language/Comp	6	14	11	2	0	94
English Literature/Comp	5	12	5	4	1	81
Government & Politics - US	1	5	2	2	0	80
Music Theory	1	4	1	0	0	100
Music Theory Aural Subscore	0	5	1	0	0	100
Music Theory Nonaural Sub	2	3	0	1	0	83
Physics B	1	2	4	0	0	100
Spanish	0	2	0	1	1	50
Statistics	1	2	2	0	0	100
United States History	3	7	10	6	0	77
TOTAL	29	68	47	20	6	85

2010-2011 Scholastic Aptitude Test

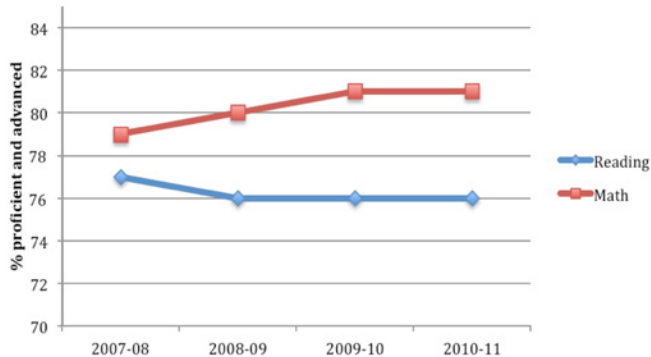


Point of Pride

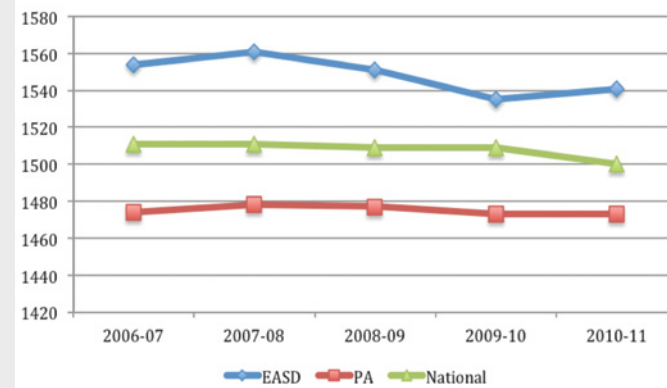
EASD scores on the verbal, math, and writing SAT were 26, 26, and 16 points above the state average respectively for the 2010-11 school year.

PSSA by Year

All Students



EASD, State, National SAT Averages

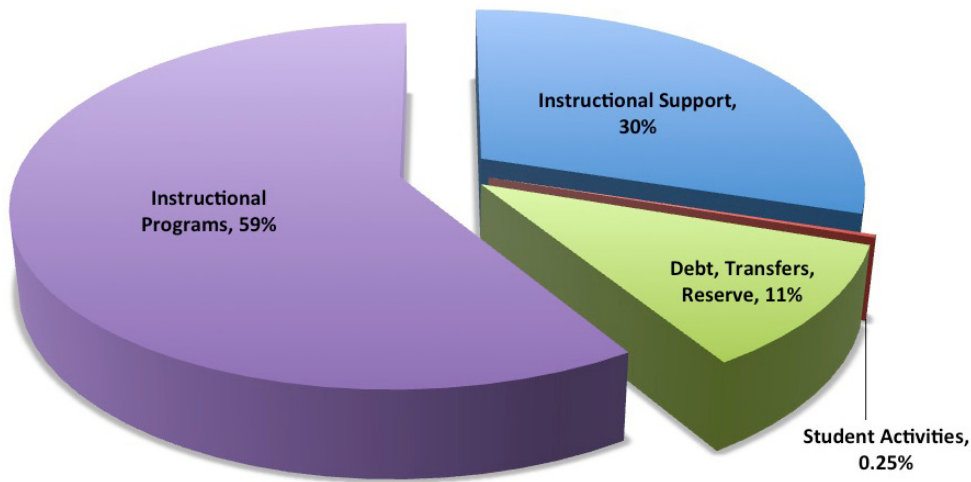




**Good
Stewardship**

Elizabethtown Area School District recognizes the importance of being held accountable to its stakeholders for the good stewardship of taxpayer money. We are proud that during these challenging economic times that we have been able to keep the focus of our spending on the programs and services that have a direct impact on our instructional offerings.

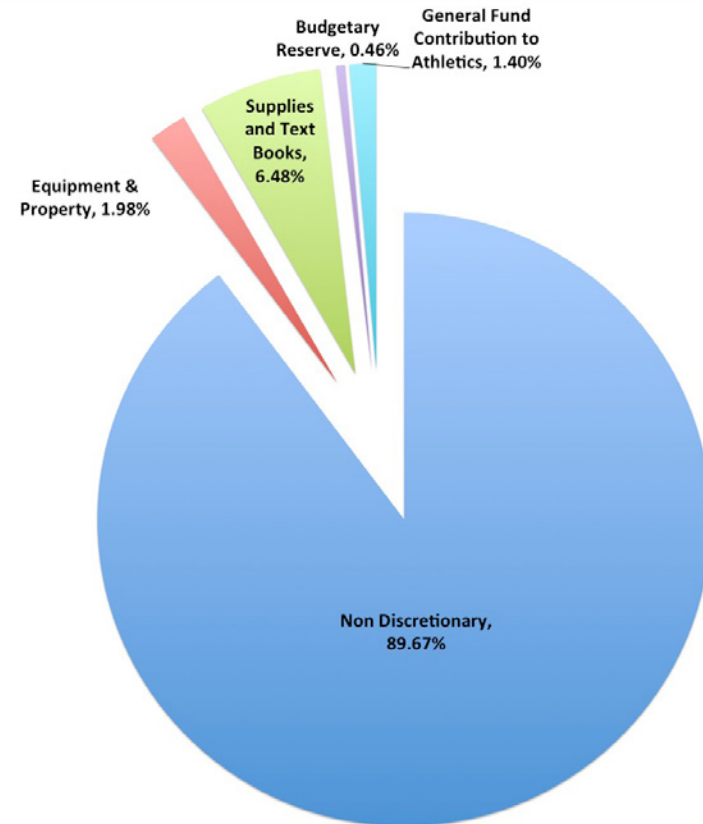
2010-2011 Expenditures by Function

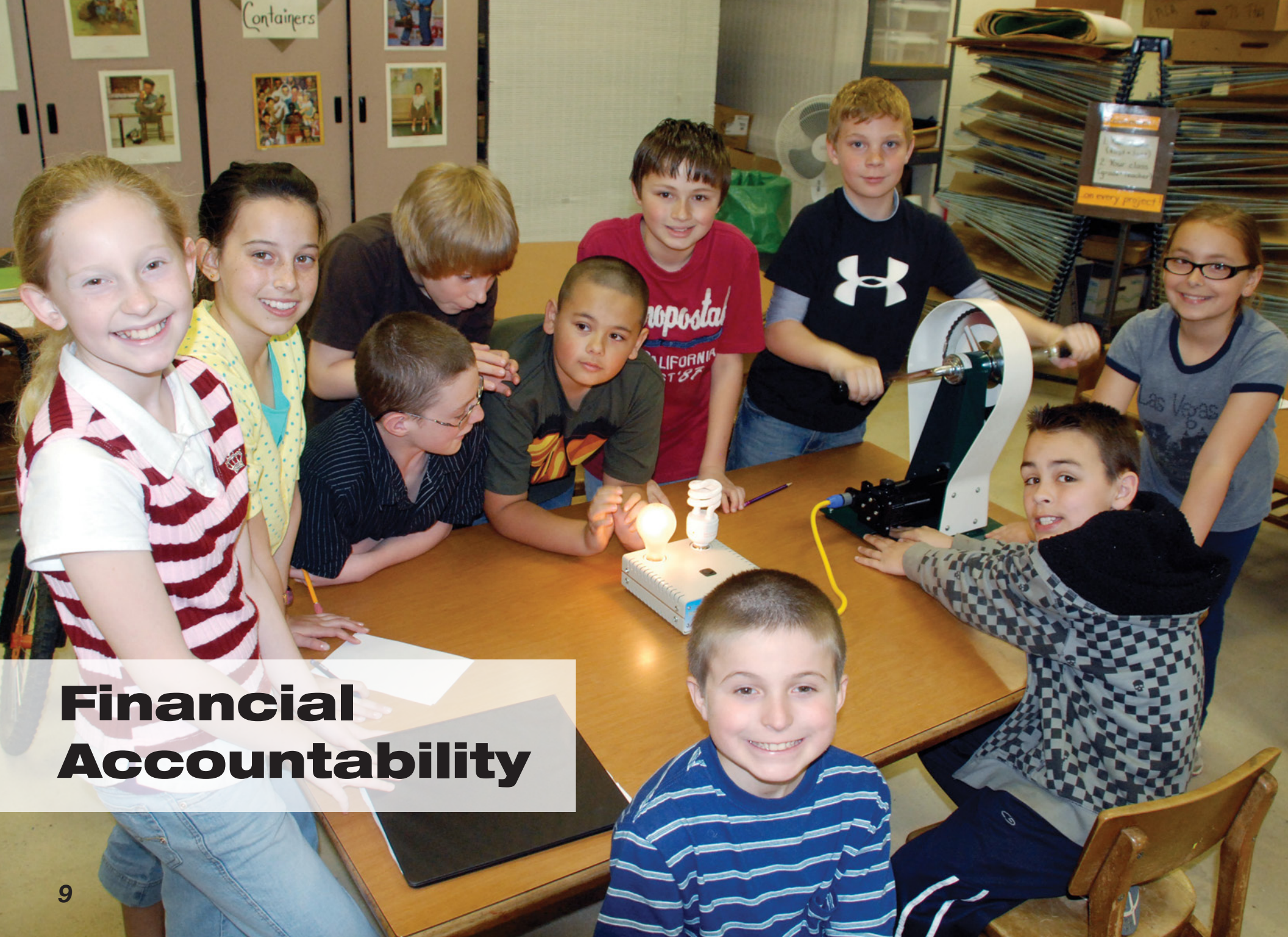


Point of Pride

Almost 60% of all expenditures go toward instructional programming, while another 30% goes toward instructional support.

2010-2011 Discretionary Versus Non-Discretionary Spending

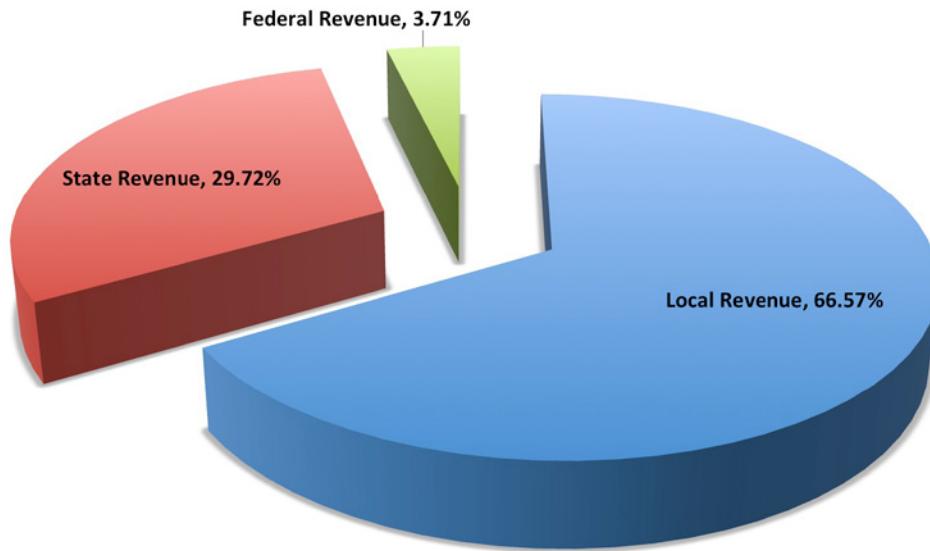




Financial Accountability

One of the most important responsibilities of the Board of School Directors and EASD administration is the development of the annual budget. The school directors and administration have made fiscal responsibility and accountability its highest priority, while at the same time maintaining a budget process that is instructionally driven.

2010-2011 Revenue by Source

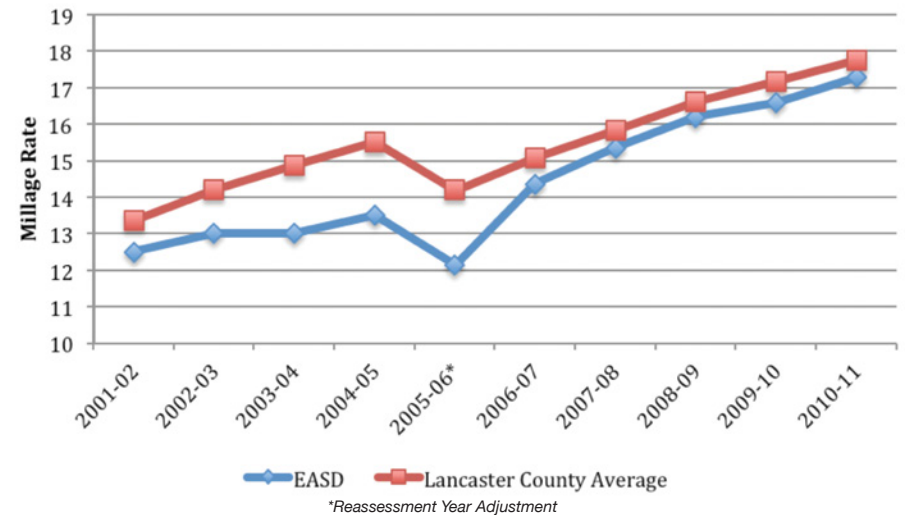


Total Budget revenue for 2010-2011 was \$47,267,699

Point of Pride

Over \$3.5 million was secured in grants to support the core operations of the district in the 2010-2011 school year.

Millage Rate History



Quick Fact

EASD's millage rate has remained below the county average for the past 10 years.

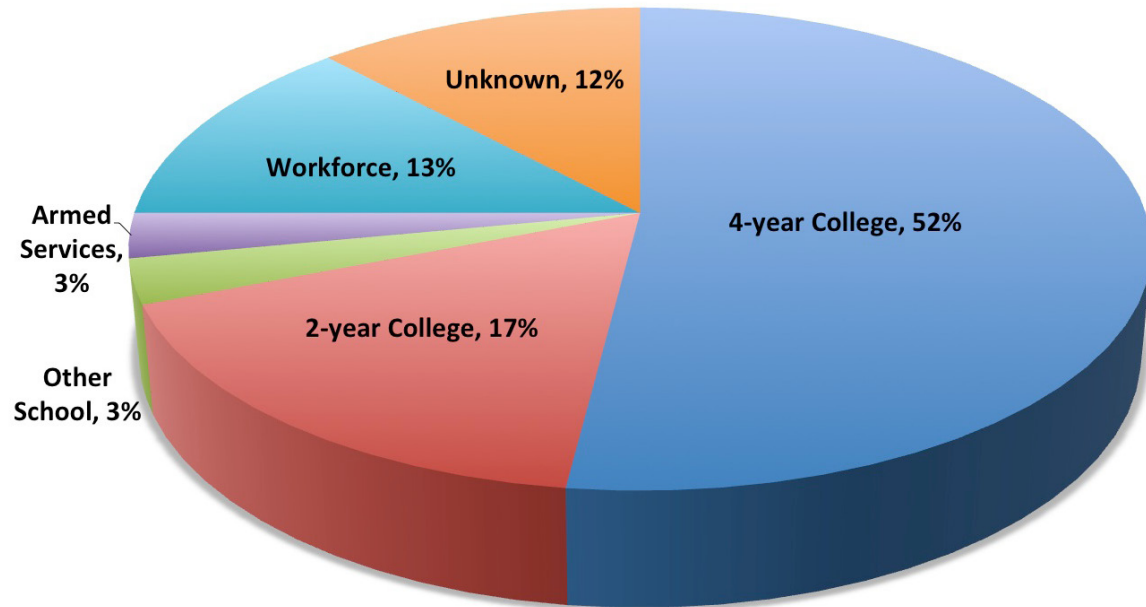


It's A Journey

EASD offers a strong academic program in grades K-12 that is designed to prepare students not only to move from grade level to grade level successfully, but also prepare them to be successful upon graduating from our school system.

Class of 2011

What are they doing now?



Point of Pride

Accepted at U.S. News & World Report's Top 50 Universities	9.6%
Accepted at U.S. News & World Report's Top 50 Liberal Arts Colleges	1.5%
Accepted at U.S. News & World Report's Top 50 Universities (North Region)	6.4%
Accepted at U.S. News & World Report's Top 50 Colleges (North Region)	13.1%
Accepted at U.S. News & World Report's Top 20 Up and Coming Schools	5.5%

2010-2011 *Graduation Snapshot:*

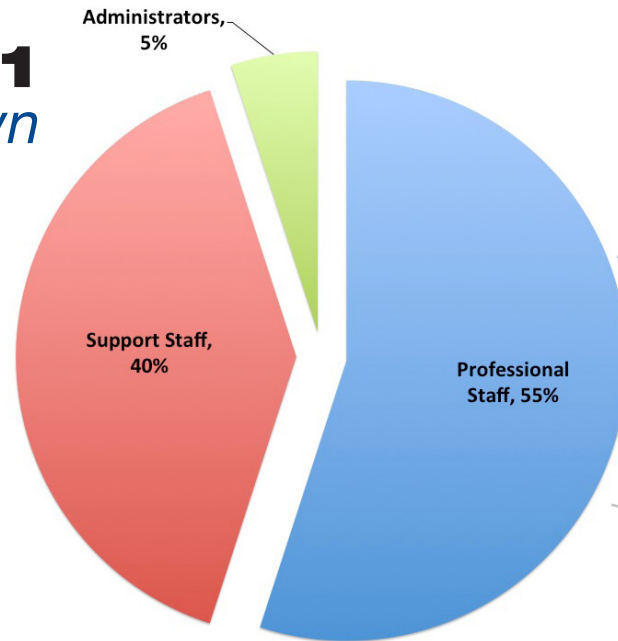
- Total number of graduates: 342
- EASD 2010-11 Graduation Rate: 94.5% (PA Taret: 85%)
- Students from the Class of 2011 enrolled in 83 different colleges/universities across 17 states and the District of Columbia



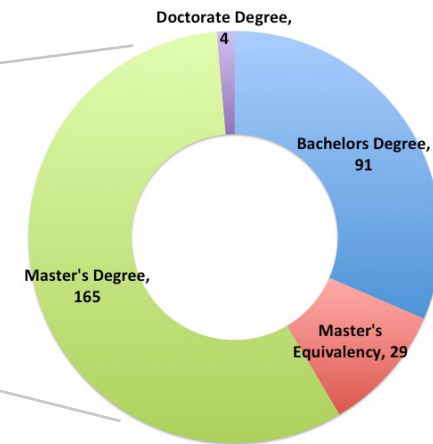
Maintaining Excellence

To meet the needs of our students, the Elizabethtown Area School District employs nearly 500 professional and support staff members, each playing an invaluable role in providing an inviting, clean, and safe learning environment for our students. One of the district's basic building blocks for organizational excellence is having high expectations for all. This begins with our dedicated and hard-working employees establishing a culture for high standards for all students.

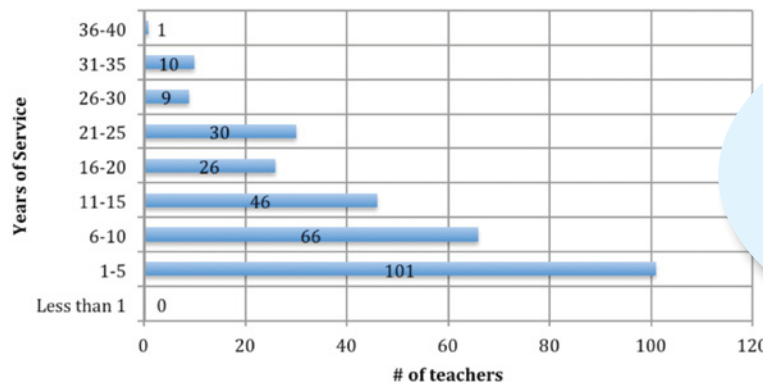
2010-2011 Staff Breakdown



Professional Staff Education



2010-2011 Teacher Profile



Quick Fact

- 42% of our current faculty have been with EASD for at least ten years.
- 23% of our current faculty have been with EASD from between six and ten years.
- 57% of our current faculty have a masters degree.
- 31% of teachers hired in the last five years had a graduate degree at the time of hire.
- 62% of teachers hired in the last five years had previous teaching experience.



Elizabethtown Area School District

600 East High Street
Elizabethtown, PA 17022
(717) 367-1521
www.etownschools.org

Non Profit
U.S. Postage
PAID
Elizabethtown, PA
Permit No. 129

2012

Annual Report to the Community