

Project Observation Report

Project Name:	Tri Tech East Building C 1.5	Project No.	2208
Report #:	45		
Observation Date:	8-9-23	Last Report:	8-2-23
Prepared By:	Steve Mallory, AIA	Contractor:	Banlin

Weather:

Sunny	Wind calm	70°	From: 8:25am	To: 8:50am
-------	-----------	-----	--------------	------------

Construction Activity Observed:

Schedule Activity No.	Work in Progress
	Punchlist
	Fire Alarm
	Landscaping
	Plumbing
	Electrical
	Security

Labor Resources Observed:

Contractor-Quantity	Contractor-Quantity
Banlin -1+1	Plumbing -1
Landscaping - 4	Electrical -1
Evco - 3	Security - 2

Observed Equipment on site: Sanican, tracked skid loader

Others/ Inspectors on site: -

Field Discussions: Checked in with Matt. Civil and electrical punchlist work on-going. Evco here today are working on fire alarm. Low voltage work on-going, installing sod on the south side of the building and patching grass sections at the north site. Vacuum system replaced. Plumber here doing last of the install. Moon working on security system. Painters to do final touch up next week.

Percent Complete:	Pay-app (#10)	Completion Date:
Contract Amount	\$3,774,429.00	Original Contract NTP: Sept 21, 2022
Change Orders:	\$73,161.53	
Adjusted:	\$3,847,590.53	
Completed:	\$3,571,770.06, with \$178,588.50 retained	
Current Payment	\$234,197.18 (Incl. WSST)	Change Order date adjustment: 0 days
Overall % Complete:	92.8%	Expected Project End Date: Aug 15, 2023

Change Order Breakdown: -

Inspection Reports: Fire alarm inspection – Friday, all inspections to date have passed

As-Builts: No issues.

Preparers Comments: They are nearing completion of the work including the Fire alarm system and water softener. Only filters remain for the ERV painting, CMU bug holes and a couple of other minor items remain for the base contract. Working on the final punchlist with final cleaning remaining in the Storage room and shop remaining, the other rooms are finished.. Fire alarm systems nearly complete. Low voltage work nearly complete. Water valve cover at the NW site is complete. All looks good.

Construction Site Photos:



East Elevation



Looking south along the central curb at the main site entry



North site, sod patching



Looking at the northeast corner of the building



North elevation



Looking west at the alleyway



Looking south at the west (rear) elevation



Looking at the northwest corner of the building



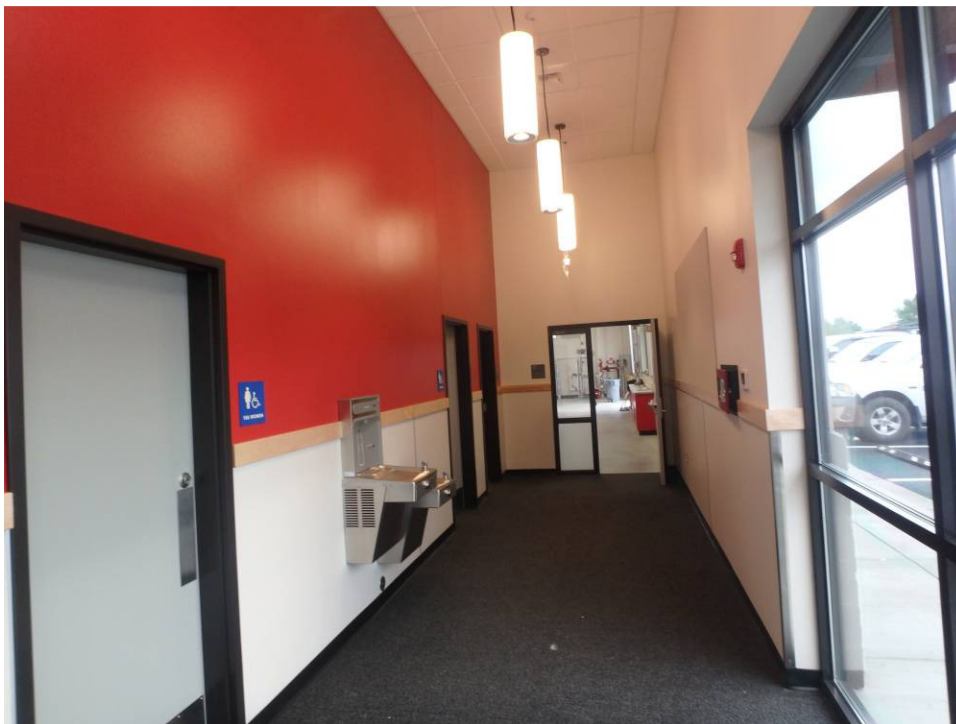
Looking south at the front sidewalk



Main entry



Looking west at the inner vestibule doors



Entry – looking north



Mechanical room – janitor's sink



Working on the piping above the water softener



Looking north along the shop's east wall and lockers with diamond plate top



Looking northwest across the shop



Looking west along the Shop's south wall



Looking north at the northeast corner of the shop



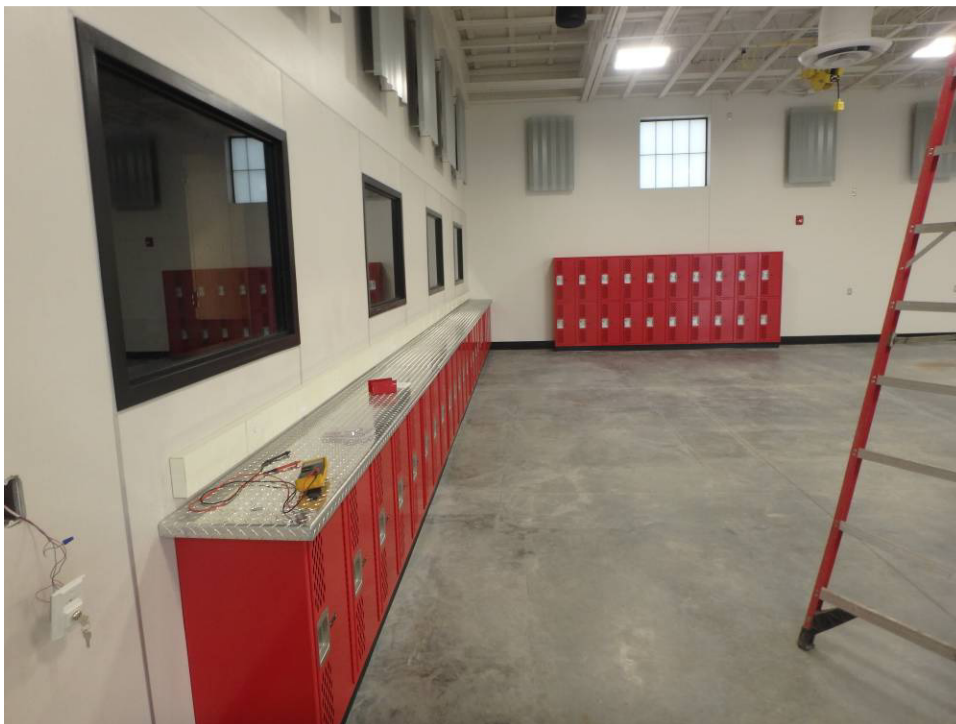
Looking west at the Shop's north wall



Looking southwest across the shop



Looking south along the shop's east wall and lockers with diamond plate top



Looking west at the southwest corner of the shop



Looking northnorthwest at the electrical panels and transformer mounted on the wall



Looking northeast across the shop



Storage room backboard and equipment, relocated lower panels to north wall - paint



Looking west along the north classroom's north wall



Looking southwest at the southwest corner of the north classroom



Looking south at the southeast corner of the north classroom



Looking west along the south wall of the north classroom



Looking west at the main east-west corridor



Looking east at the main east-west corridor



Office



Lab – looking south into the lab from the north lab door



Lab- west casework



Lab south wall



Lab dogwash stations and acoustical panels



Kennel Room acoustical wall panels, vacuum (replaced) and janitor sink on the north wall



Looking at the acoustical wall panels on the west wall of the south classroom



Looking at the north wall of the south classroom and NE entry



Looking at the south classroom entry



South classroom – south wall



Looking west along the south elevation of the building and new sod



Looking north at the front sidewalk



Knox box