

Elizabethtown Area School District



**Schematic Design:
Bainbridge Elementary School**



Crabtree Rohrbaugh & Associates, Architects

September 13, 2016

Innovative Mindset:

student's self-assessment
& reflection

interdisciplinary and
integrated approaches

fluid time

anytime, anywhere

What does it look like?

What does it sound like?

flexible spaces

virtual learning

student's voice and choice

teacher: present or not

student's progression
based on aptitude

demonstration through real-
world, inquiry based work

 *"Excellence by CHOICE, Not by Chance"*

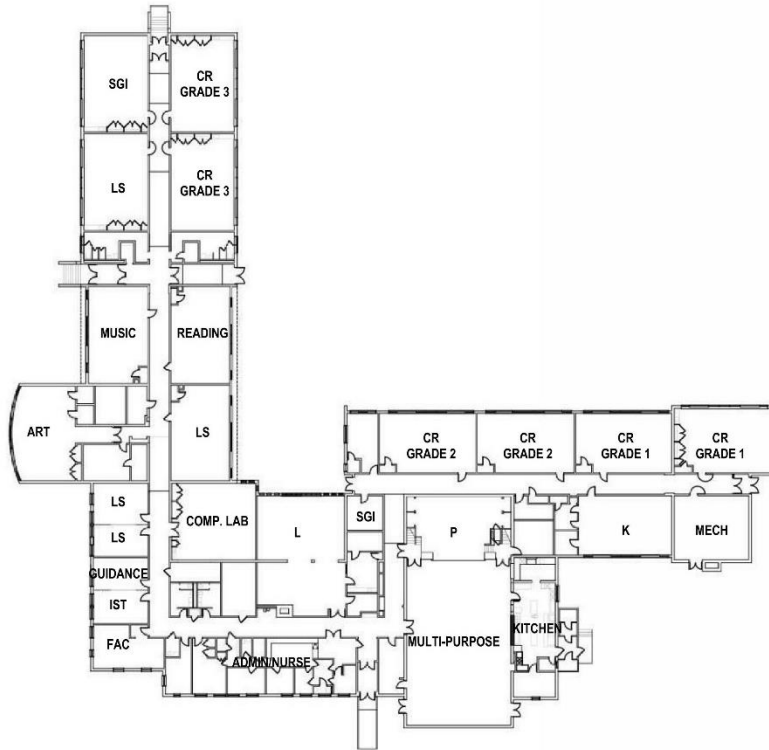


Existing Site Plan





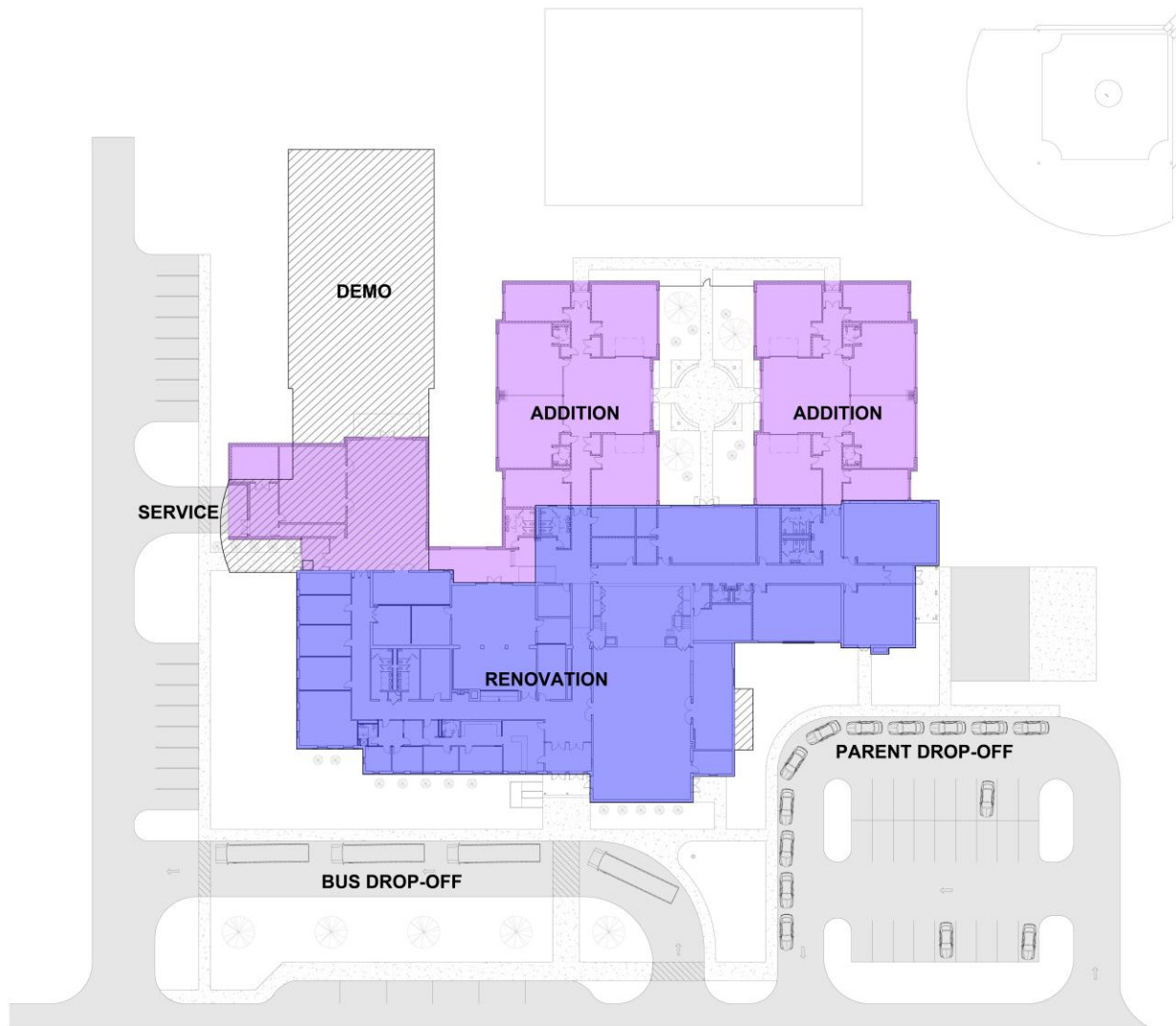
Existing Floor Plan

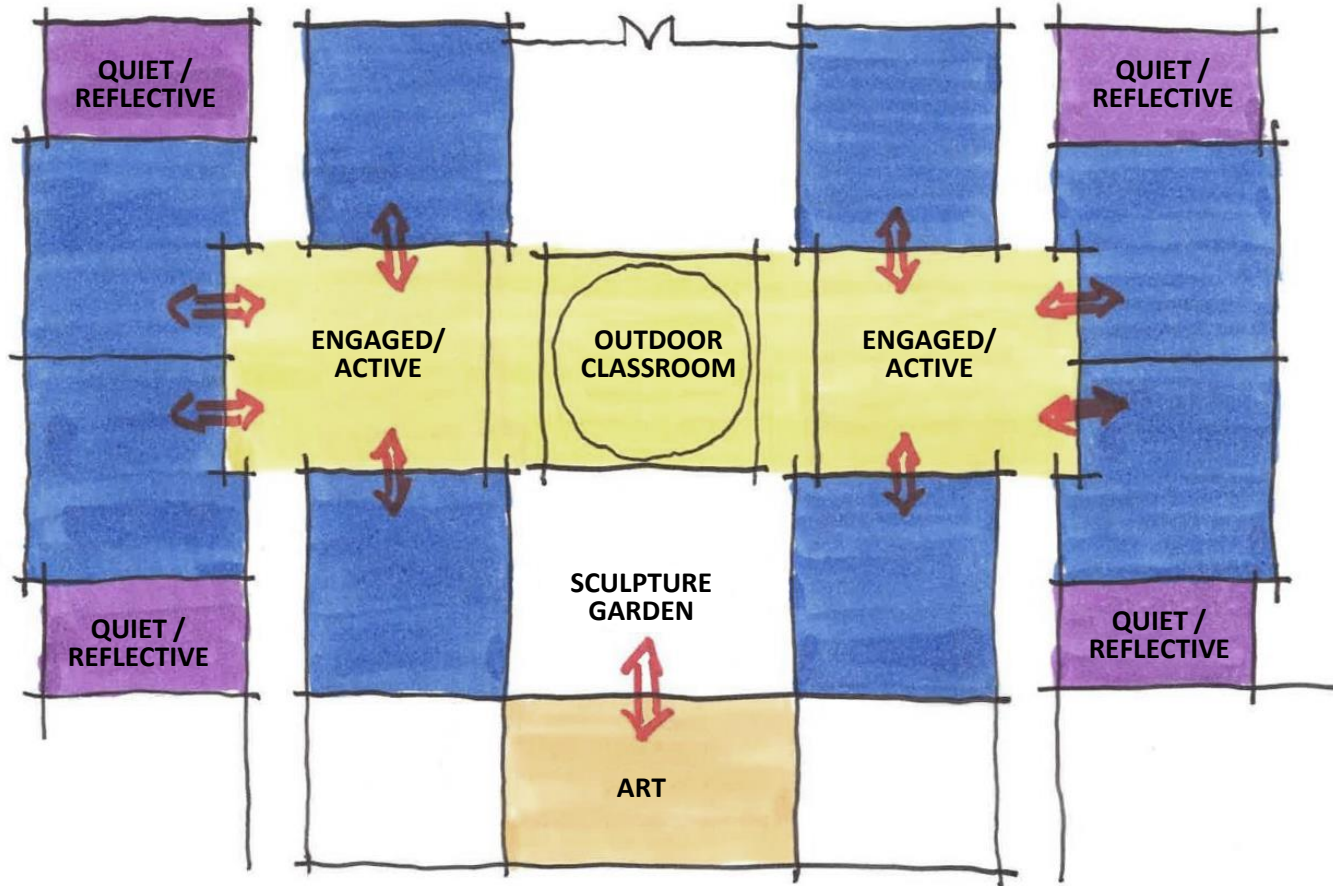


EXISTING PLAN 



Proposed Site Plan (Option 3 - August 2016 Presentation)





**Design driven and inspired by educational program -
(21st Century learning model)**

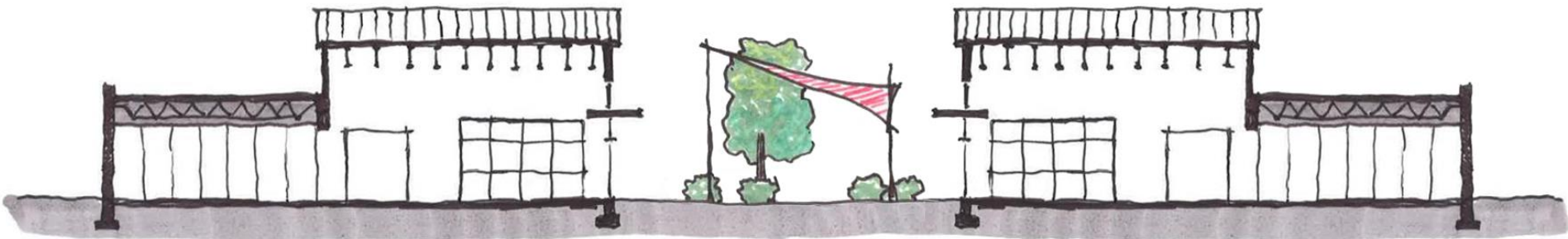


Proposed Schematic Floor Plan





Conceptual Section – Academic Area



CLASSROOM

**COLLABORATIVE
LEARNING**

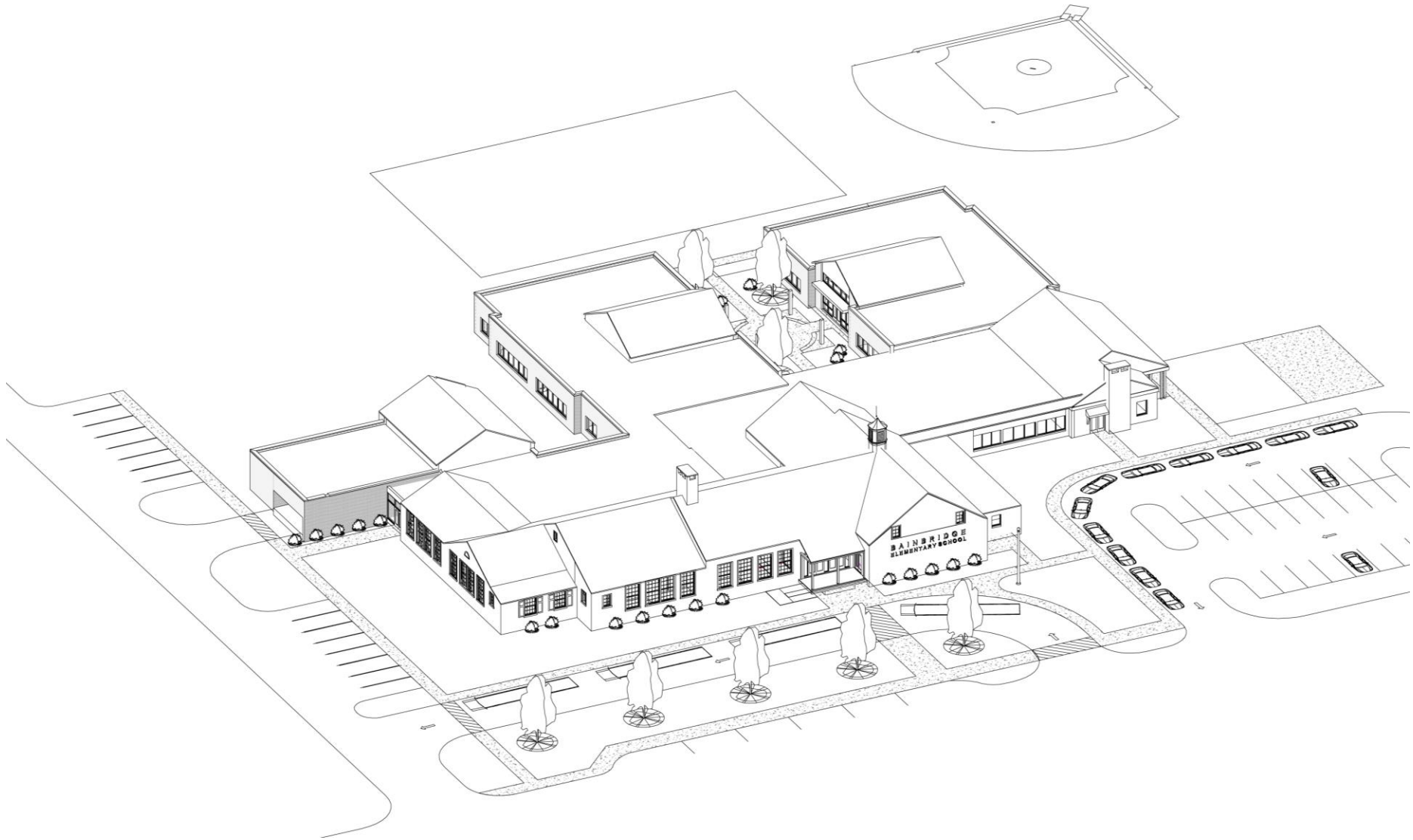
**OUTDOOR
CLASSROOM**

**COLLABORATIVE
LEARNING**

CLASSROOM

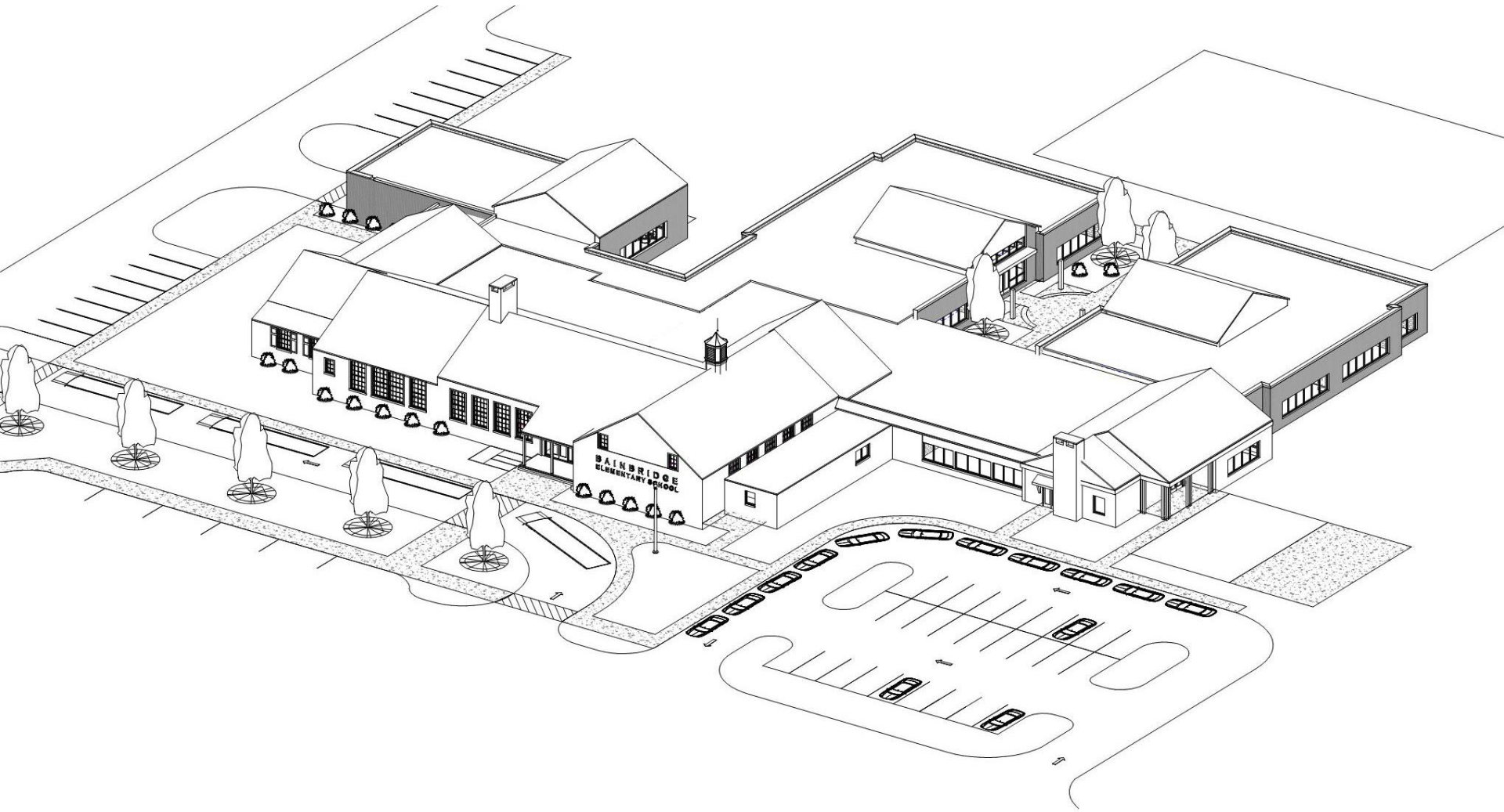


3D Massing Model





3D Massing Model





Preliminary Budget Range

$$\begin{array}{rcl} 45,700 \text{ sf (+/-)} & \times & \$180 - \$200 / \text{sf} \\ & \times & 20\% - 25\% \text{ soft costs} \\ \hline & = & \$9.9 - \$11.4 \text{ million project cost} \end{array}$$

August 12, 2015 budget - \$10.7 million project cost

**The project remains on budget
as presented on August 20, 2016.**



Schematic Design: July – August 2016

- September 20 – Board Approval of Schematic Design & Budget

Design Development: September – October 2016

- October 18 – Board Approval of Act 34 Hearing Booklet

Construction Documents: November 2016 – January 2017

- Early November (tentative) – Act 34 Public Hearing
- December 13 – Board Approval of PLANCON Parts D and E
- January 10 – Board Approval of PLANCON Part F / CDs

Bidding: February – March 2017

Construction: June 2017 – August 2018



Questions?



Crabtree Rohrbaugh & Associates, Architects