



ELIZABETHTOWN AREA SCHOOL DISTRICT

Bainbridge Elementary School

School Board Project Update

Schematic Design

August 9, 2016

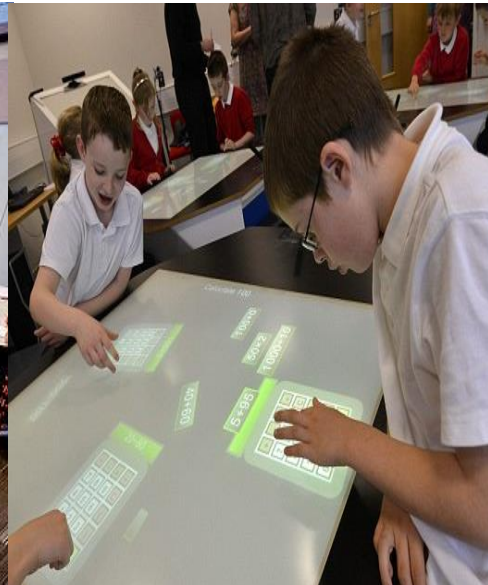
7:00 PM



Crabtree Rohrbaugh & Associates, Architects



- The program will infuse technology to enhance 21st century learning
- Our schools will be a connection point with the community and connect curriculum to life outside of the school.
- Curriculum will be integrated and support project based learning, encouraging creativity and critical thinking incorporating the arts.
- Encourage collaboration (student to student, student to faculty, faculty to faculty) and promote cross curricular learning.
- Spaces and furnishings be flexible and adaptable.



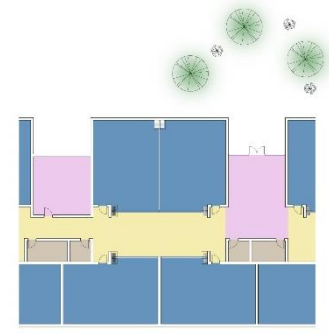
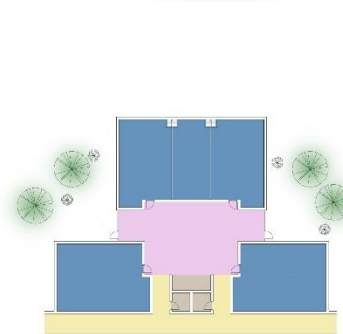
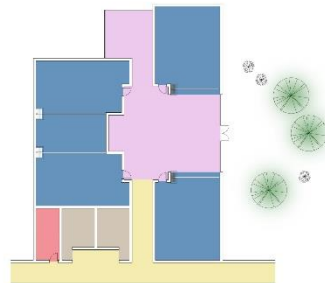
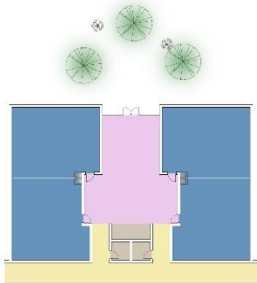
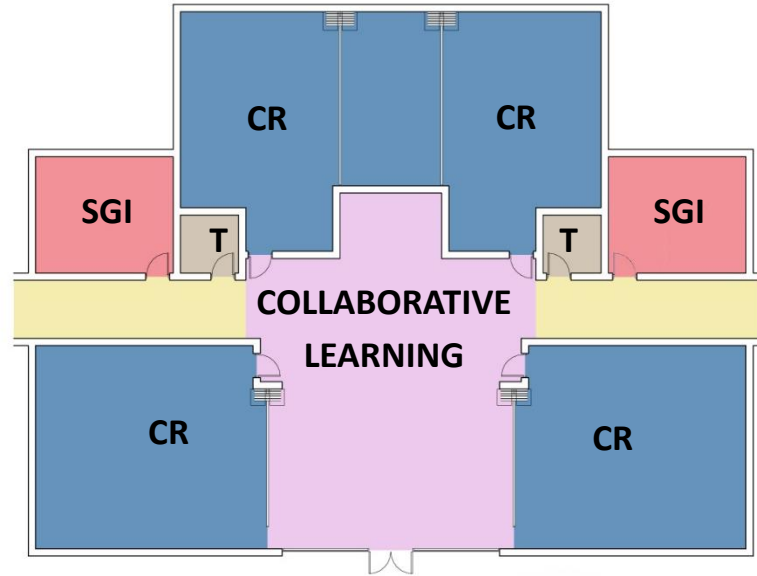
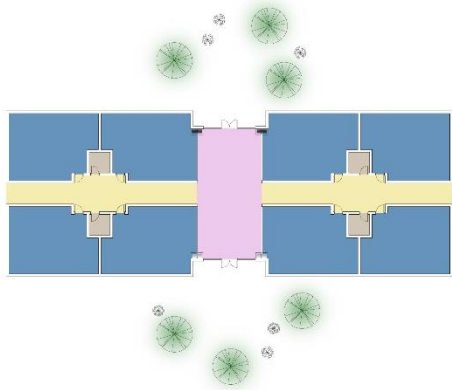


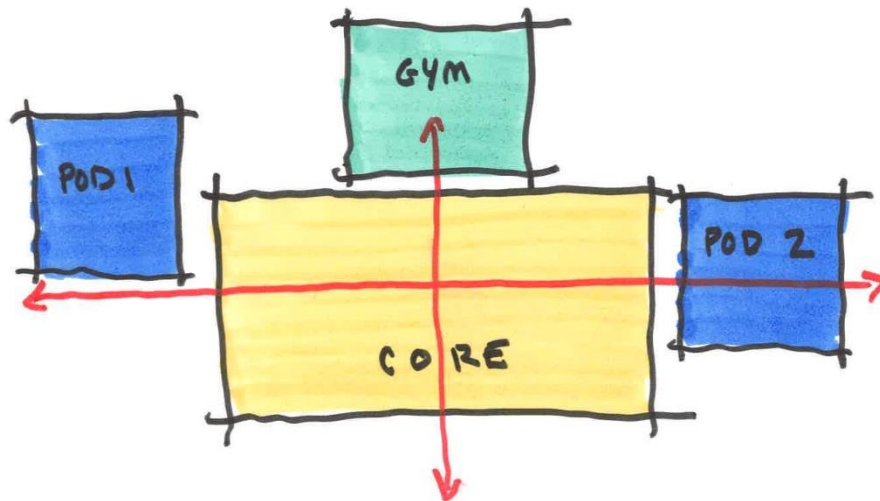
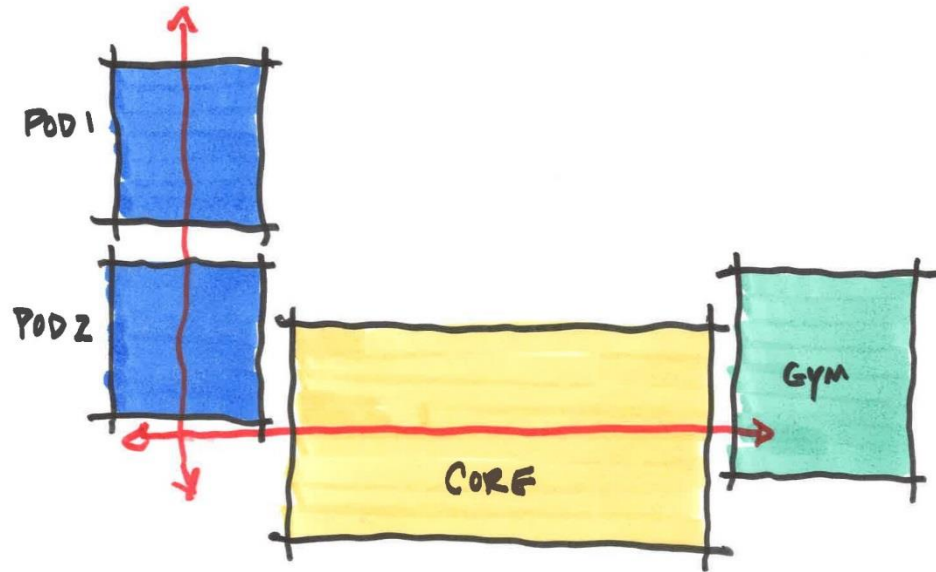
- The environment will be comfortable, safe, and secure.
- The school will meet the needs of the whole child, socially, academically, emotionally, and physically.
- The school will support vertical (trans grade level) learning.
- The school will support academic risk and embrace learning through building resiliency.
- Thoughtful selection of systems and materials to support activities





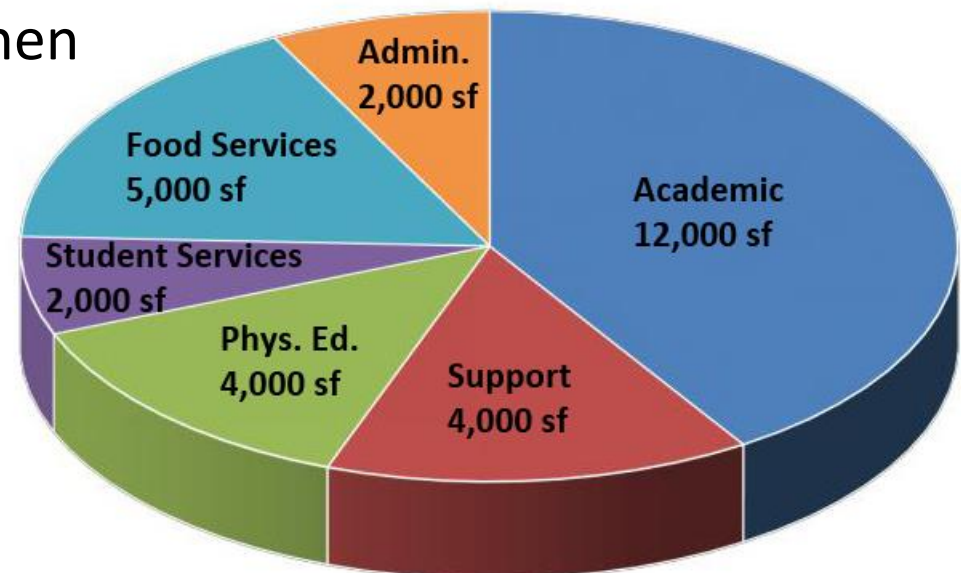
Classroom Grouping and Adjacency Studies







- **Academic** – Classrooms, Collaborative Learning, CUBS, Learning Support, Small Group Instruction, Life Cycle Lab
- **Support** – Media / Maker Space, Art, Music
- **Physical Education** – Gymnasium, Storage, P.E. Office
- **Student Services** – Instructional Support, Guidance, Psychologist, Speech, Health, Title One, Community Museum
- **Food Service** – Cafeteria, Kitchen
- **Administration** – Reception, Waiting, Offices, Conference





Existing Building Gross Area = 36,700 sf

Programmed Gross Area = 44,000 – 46,000 sf

Proposed Program Adds:

- Gymnasium, storage and PE office (potential alternate bid)
 - Collaborative learning spaces (2)
 - Classroom for full-day Kindergarten
- Classrooms are programmed as smaller than existing classrooms due to increase in shared collaborative space.



Existing Site Plan





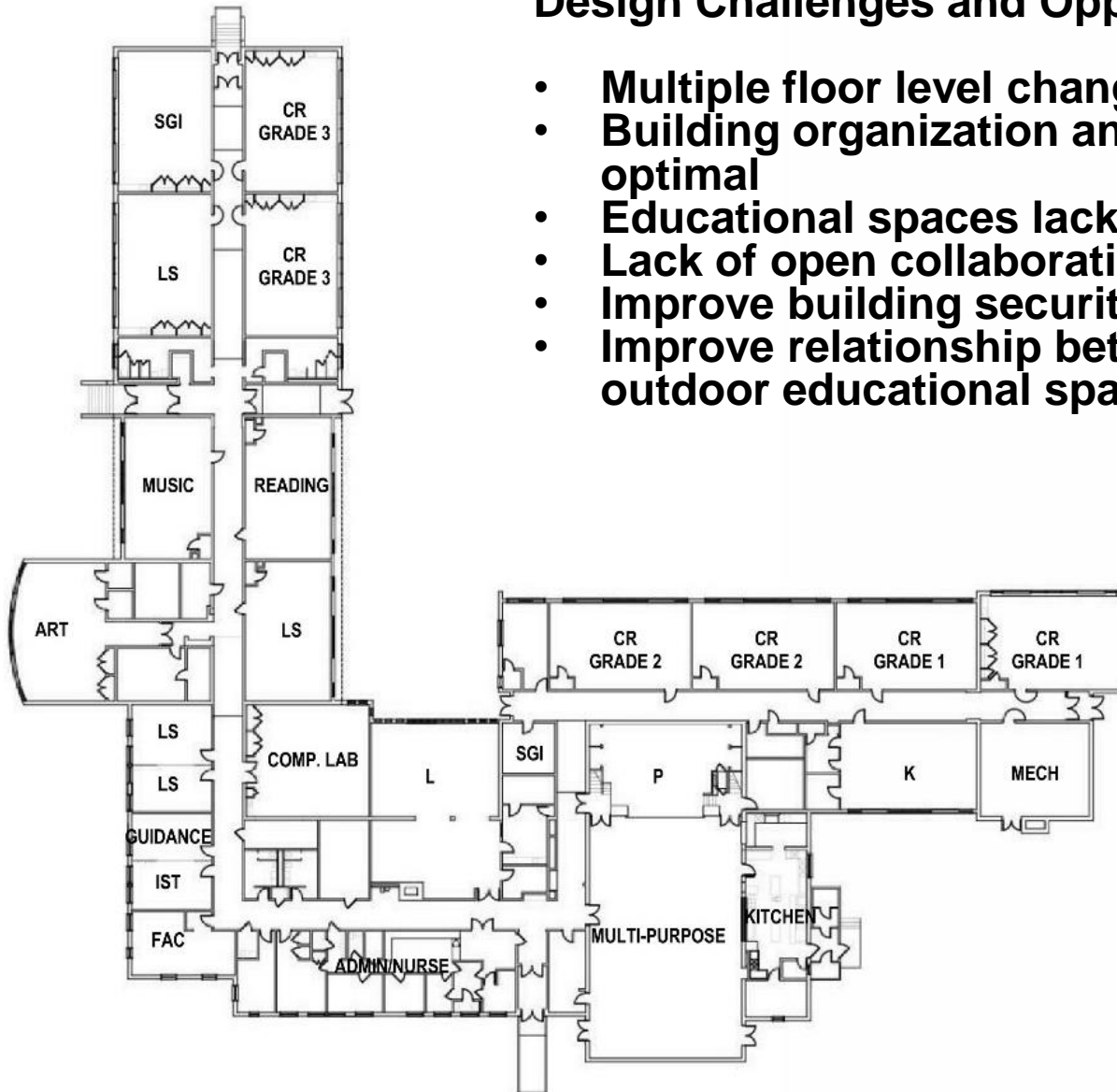
Existing Site Plan

- **Need separate bus and car circulation paths.**
- **Location of service & deliveries at front of building is a safety concern**
- **Design must work with natural slope of grade.**

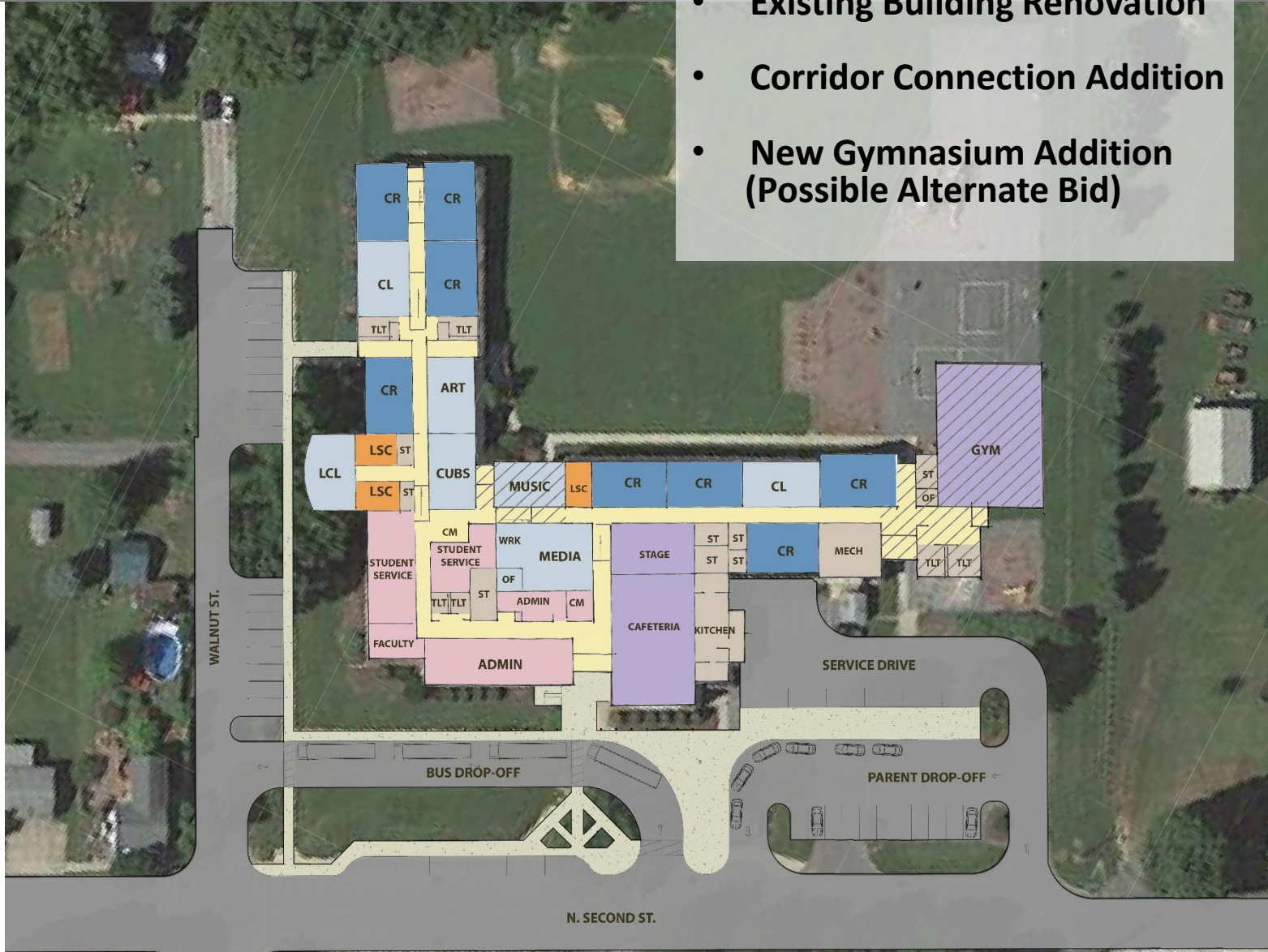


Design Challenges and Opportunities:

- Multiple floor level changes
- Building organization and circulation not optimal
- Educational spaces lack flexibility
- Lack of open collaborative learning spaces
- Improve building security
- Improve relationship between indoor and outdoor educational spaces



- Existing Building Renovation
- Corridor Connection Addition
- New Gymnasium Addition (Possible Alternate Bid)



- Substantial Renovation of Existing Classroom Wing
- Corridor Connection Addition
- New Gymnasium Addition (Possible Alternate Bid)



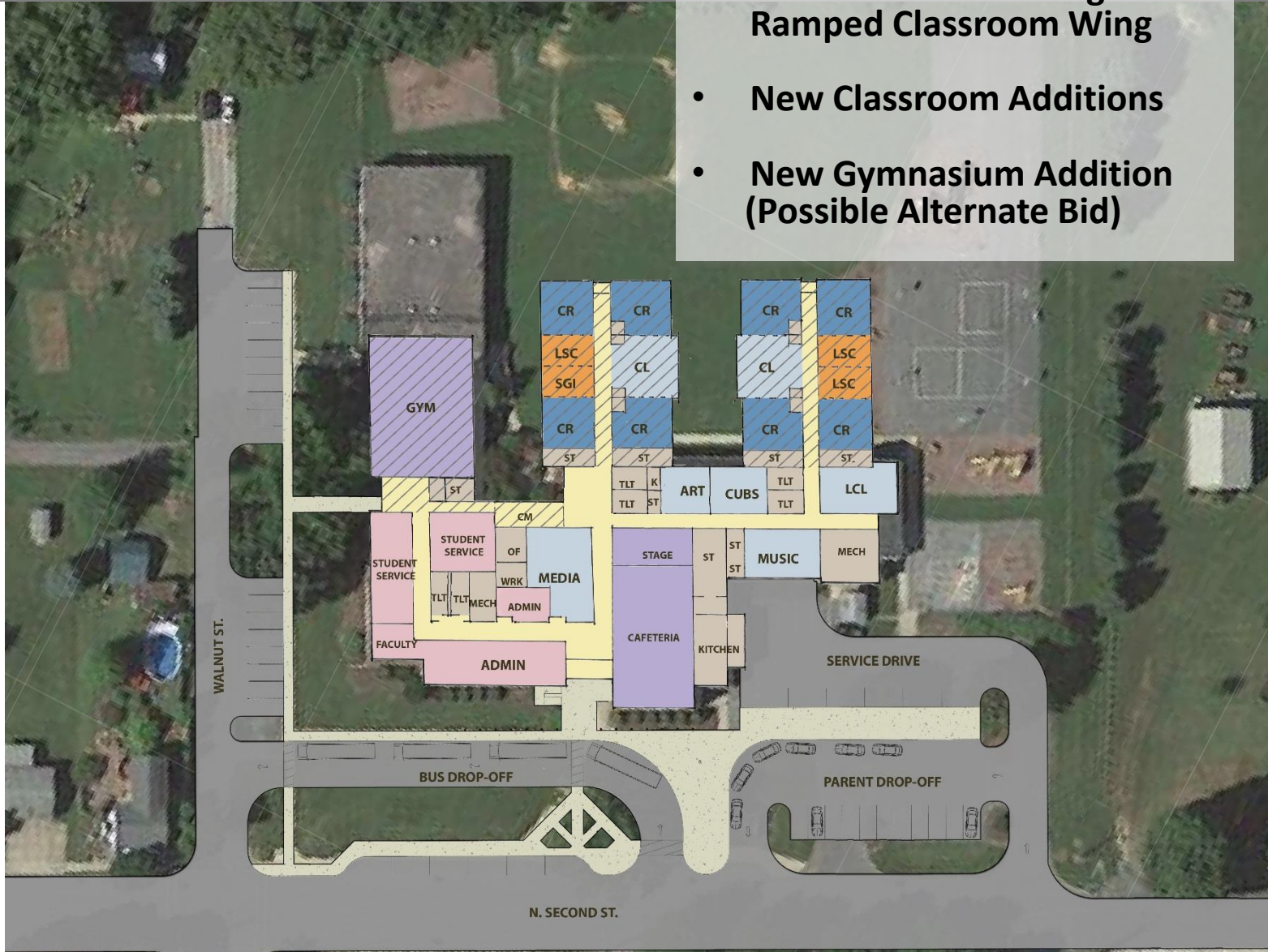
- **Renovation and Addition to Existing Classroom Wing**
- **Corridor Connection Addition**
- **New Gymnasium Addition (Possible Alternate Bid)**



- Demolition of Existing Ramped Classroom Wing
- New Classroom Additions
- New Cafeteria, Kitchen and Mechanical Room Addition



- Demolition of Existing Ramped Classroom Wing
- New Classroom Additions
- New Gymnasium Addition (Possible Alternate Bid)





Option 3 - Recommended by Instructional Staff





Preliminary Budget Range

$$\begin{array}{rcl} 45,700 \text{ sf (+/-)} & \times & \$180 - \$200 / \text{sf} \\ & \times & 20\% - 25\% \text{ soft costs} \\ \hline & = & \$9.9 - \$11.4 \text{ million project cost} \end{array}$$

August 12, 2015 budget - \$10.7 million project cost



Consultants – Basic Services

Moore Engineering – Mechanical, Electrical, Plumbing, Fire Protection

Carney Engineering Group – Structural Engineering

Consultants – Additional Services

ELA Group – Civil Engineering

Food Service – McFarland Kistler

Geotechnical / Geothermal – TBD



Schematic Design: July – August 2016

- September 20 – Board Approval of Schematic Design & Budget

Design Development: September – October 2016

- October 18 – Board Approval of Act 34 Hearing Booklet

Construction Documents: November 2016 – January 2017

- Early November (tentative) – Act 34 Public Hearing
- December 13 – Board Approval of PLANCON Parts D and E
- January 10 – Board Approval of PLANCON Part F / CDs

Bidding: February – March 2017

Construction: June 2017 – August 2018



Questions?



Crabtree Rohrbaugh & Associates, Architects