



**BOONE COUNTY
SCHOOLS**

**BOONE COUNTY HIGH SCHOOL
PERFORMING ARTS CENTER**

August 2023

QUARTERLY REPORT

BOONE COUNTY SCHOOLS



ABOUT THE DISTRICT

Boone County Schools are committed to ensuring every student is college, career and life ready. As the third largest in the Commonwealth of Kentucky, the District consists of 15 elementary schools, six middle schools and five high schools. There are over 20,000 students, 1,200 who are English Language Learners, speaking over 50 languages in Boone County Schools.

This district takes great pride in their mission of Achieving Excellence Together. With a rich history of high achievements, quality teaching and efficient operations, Boone County Schools are helping to prepare today's students for tomorrow's world.

VISION

EVERY GRADUATE READY FOR COLLEGE, CAREER, AND LIFE!

MISSION

Representing and in partnership with our stakeholders, the Boone County School District recognizes that all children can learn and dedicates itself to providing a challenging educational environment that allows each student to achieve to his or her highest potential as a learner and citizen.

STRATEGIC PLAN

2023 - 2028



Goal 1: World Class Education

- Boone County Schools will provide a world class education to develop essential academic and non cognitive skills for every student in order for them to be successful in college, career, and in life, and achieve their full potential as lifelong learners and empowered citizens.

Goal 2: Empowered Workforce

- Boone County Schools will develop strategies to recruit, retain, and develop a diverse workforce that aligns with the dispositional and instructional philosophies of the district, in order to provide every student with a world-class education.

Goal 3: Stakeholder Engagement

- Boone County Schools will cultivate trust, transparency and inclusion as we engage our diverse community of stakeholders.

Goal 4: Operations & Resource Optimization

- Boone County School Schools will create an effective operational system that supports optimization of resources and good stewardship to ensure that tools and resources are available for the execution of teaching and learning for every student in all schools.



MEET OUR SUPERINTENDENT AND SCHOOL BOARD



**Carolyn
Wolfe**

Division 1



**Matthew
Turner**

Superintendent



**Dr. Maria
Brown**

Division 2



**Jesse
Parks**

Division 3



**Cindy
Young**

Division 4



**Karen
Byrd**

Division 5

[Board Divisions Map](#)



MEET OUR DISTRICT ADMINISTRATORS



Eric McArtor

Deputy
Superintendent



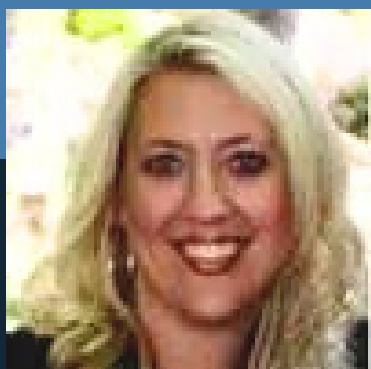
Dr. Jim Detwiler

Deputy
Superintendent



Kim Best

Assistant
Superintendent



**Dr. Jenny
Watson**

Assistant
Superintendent



Tara Drysdale

Assistant
Superintendent



**Kathy
Reutman**

Executive
Director





THE BREAK THE MOLD AWARD

The Boone County School District prides itself on breaking the mold in education. We believe in doing things differently to achieve better results. We reward our staff for being willing to try something new and innovative, for being unique or remarkable in their commitment and pursuit to help our students make achievements. That award is called Break The Mold. If you know of a teacher or support staff employee working in the district that you believe has broken the mold with their commitment to students, the district and their community, please [click this link](#) to nominate them.



February's Break The Mold award winner is Ockerman Middle School Instructional Technology Assistant Donna Huey.

[Click Here To View The Video](#)



March's Break The Mold award winners are Akrivi Watson and Beth Fitzwater from North Pointe Elementary School.

[Click Here To View The Video](#)



April's Break The Mold award winner is Teri Hall from Steepleschase Elementary School.

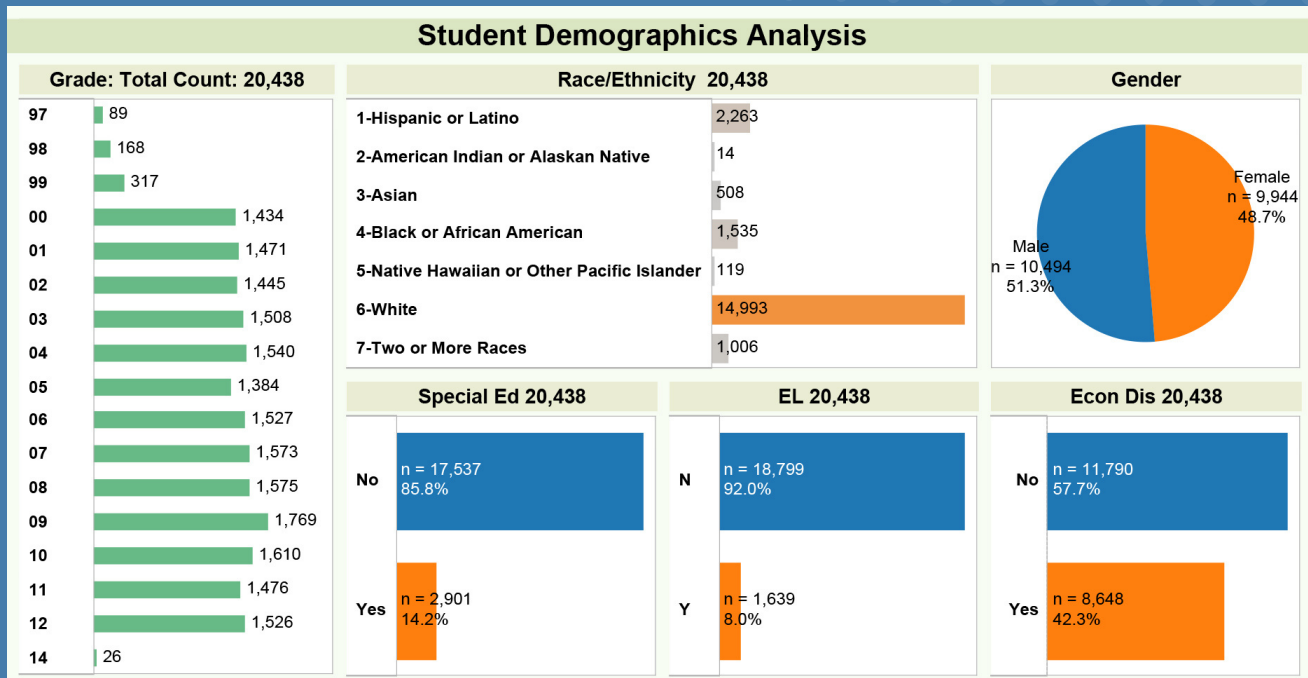
[Click Here To View The Video](#)



May's Break The Mold award winner is Corr Loring from Collins Elementary School.

[Click Here To View The Video](#)

DEMOGRAPHICS



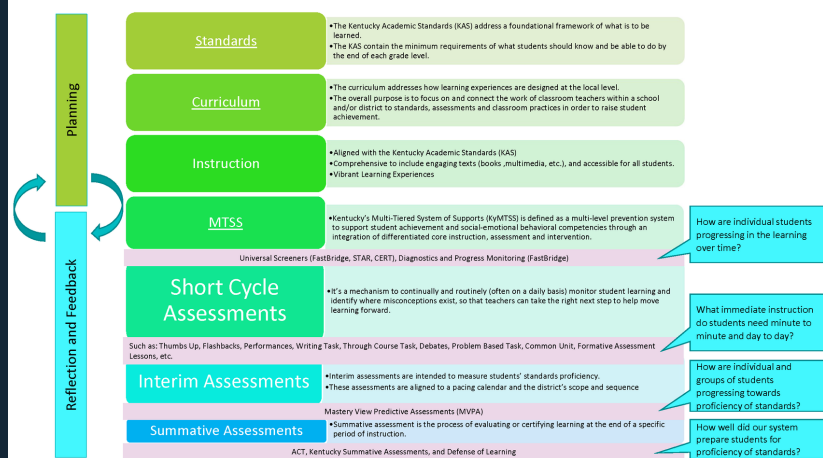
Situated just across the Ohio River from Cincinnati is a slower, easier life in the Bluegrass State. Northern Kentucky is a thriving community with character and charm. We are a community known for its rolling hills, beautiful bluegrass farms and horses. Here, the cost of living instantly drops and life is less complicated. Basketball, baseball, horse racing and the Kentucky Speedway are big in the Bluegrass. Just minutes south of Cincinnati, you are welcomed to Boone County, Kentucky. Boone County has the state's 3rd largest public school district with 20,000 students from preschool to 12th grade. The Boone County School district is a growing, diverse system of 28 schools with students of all nationalities speaking 60 different languages. The district is highly rated and listed as one of the best in the nation. We have the highest test scores of any large, diverse school district. Our high schools are consistently ranked among the top public high schools according to U.S. News and World Report. We have an innovative STEAM high school, The IGNITE Institute, with a curriculum structure for 7 colleges designed to lead students into several career pathways as well as a Vocational School. Come tour our schools and community. Be sure to check us out at boone.kyschools.us and igniteinstitute.org.





ASSESSMENT TESTING SCORES

District Data Dashboard						
Academic Data						
Summative Student Performance						
Kentucky Summative Assessment						
Year	% PD Reading	% PD Math	% PD Science	% PD Social Studies	% PD Writing	Classification
2021-2022	54	52	27.7	44.7	46	14 TSJ
2020-2021	46.3	42.9	26.1	44.7	51.1	1 CSJ
2019-2020	59.8	53.3	35.7	56.2	47	1 CSJ
2018-2019	60.8	52.3	31.6	56.7	42.8	1 CSJ/18 TSJ/4 Other
2016-2017	60.7	52		64.2	41.6	
2015-2016	61.6	55.8		62.2	44.5	
Formative Student Performance						
STAR Grades 3 rd - 8 th %PD						
	Reading		Math			
Fall	Elem = 53% MS = 49%		Elem = 43% MS = 46%			
Spring	Elem = 57% MS = 50%		Elem = 51% MS = 48%			
CBET 10 th grade % PD						
	Reading		Math			
Fall	38%		6%			
Spring	34%		22%			
MVPA 3 rd - 8 th & 10 th %PD						
	Reading		Math			
October - % RD & % MA	Elem - 48%/MS - 50%/HS - 44%		Elem - 49%/MS - 41%/HS - 43%			
January - % RD & % MA	Elem - 52%/MS - 51%/HS - 53%		Elem - 48%/MS - 45%/HS - 49%			
March - % RD & % MA	Elem - 52%/MS - 51%/HS - 53%		Elem - 52%/MS - 50%/HS - 48%			
Grades (Panorama)						
	Term 1	Term 2	Term 3	Term 4		
Overview	50% are on track.		44% are on track.		41% are on track.	
					49% are on track.	
Student Behavior 27%						
Non-Academic Data						
	Term 1	Term 2	Term 3	Term 4		
Total # of Referrals	4404	5027	7250			
Total # of In-School Suspensions	111	194	207			
Total # of Out-of-School Suspensions	379	409	553			
Attendance (% present at school)						
	Term 1	Term 2	Term 3	Term 4		
Students	95.14%	92.76%	94.24%			
Teachers						
Perception Data						
	Fall		Spring			
SEL	70% of students are on track.		69% of students are on track.			

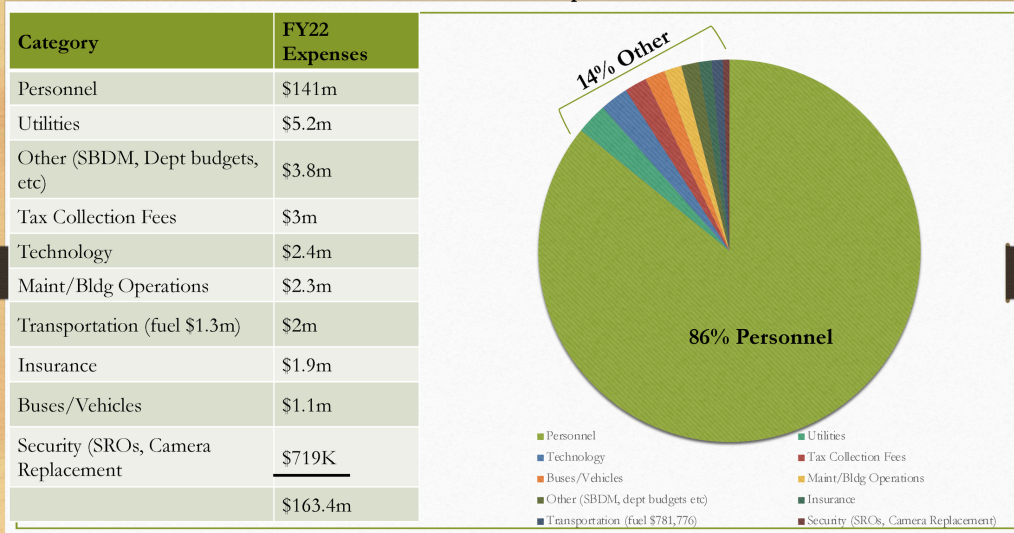


As a system, we analyze the data from our Kentucky Summative Assessment (KSA), as well as the district wide formative assessments given through out the year. Those assessments help us answer the following questions:

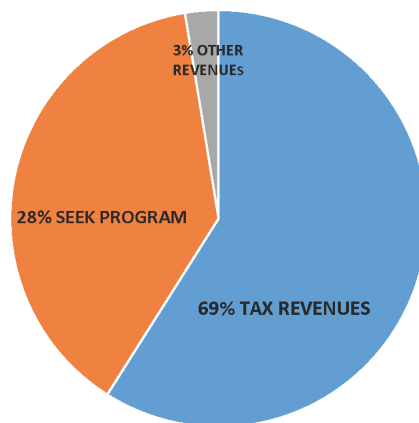
- How are our students progressing in their learning over time?
- What immediate instruction do students need minute to minute and day to day?
- How are individual and groups of students progressing towards proficiency of standards?
- How well did our system prepare students for proficiency of standards?

BUDGET ITEMS

Fund 1 - FY22 Expenses



GENERAL FUND REVENUES
FISCAL YEAR 2021-22



General Fund	Revenue
Tax Revenues	\$111m
Seek Program	\$ 47.8m
Other Revenues	\$ 5.2m
	\$164m

The charts above are the financial picture for the Boone County Schools General Operating Fund. They show the source of funds received and how these resources are spent.

As a school system, our largest expenditure is for the people serving our students and schools.





FACILITIES AND MAINTENANCE

CONSTRUCTION UPDATE

Current Major Projects

Jones Middle School Addition and Interior Upgrades

- Newly constructed addition of 6 new classrooms, 2 new science classrooms and 2 new resource rooms.
- Interior upgrades of new lighting and HVAC controls.



Boone County High School Addition and Renovation

- Newly constructed Performing Arts Center which includes a new band room, choral classroom, dressings rooms and production technologies.
- Renovation of approximately 75% of the existing building to include new flooring, ceilings, lighting, HVAC systems, classroom technology and renovated restrooms.





FACILITIES AND MAINTENANCE

CONSTRUCTION UPDATE

Current Minor Projects

Yealey Elementary

- Since opening its doors in 1964, Yealey Elementary has undergone several renovations and additions which resulted in multiple roof systems across the building. The current roof project involves the removal of the various old roofing systems and replacing them with one consistent system across all areas of the building.

Ryle High School

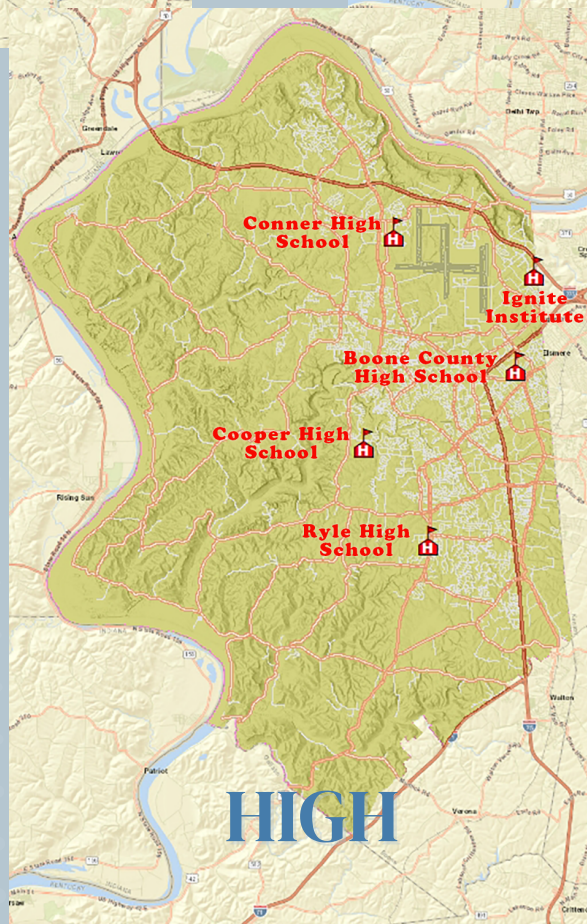
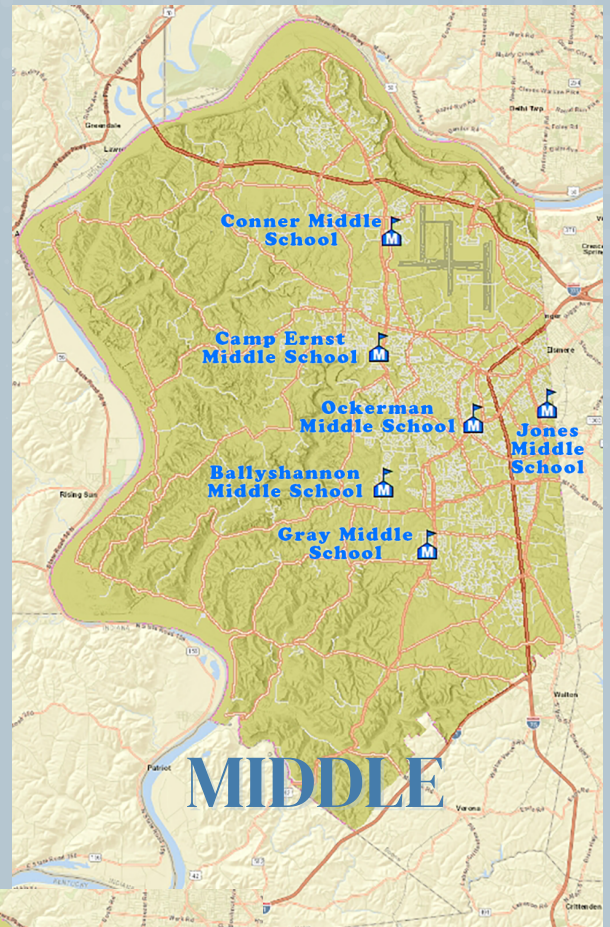
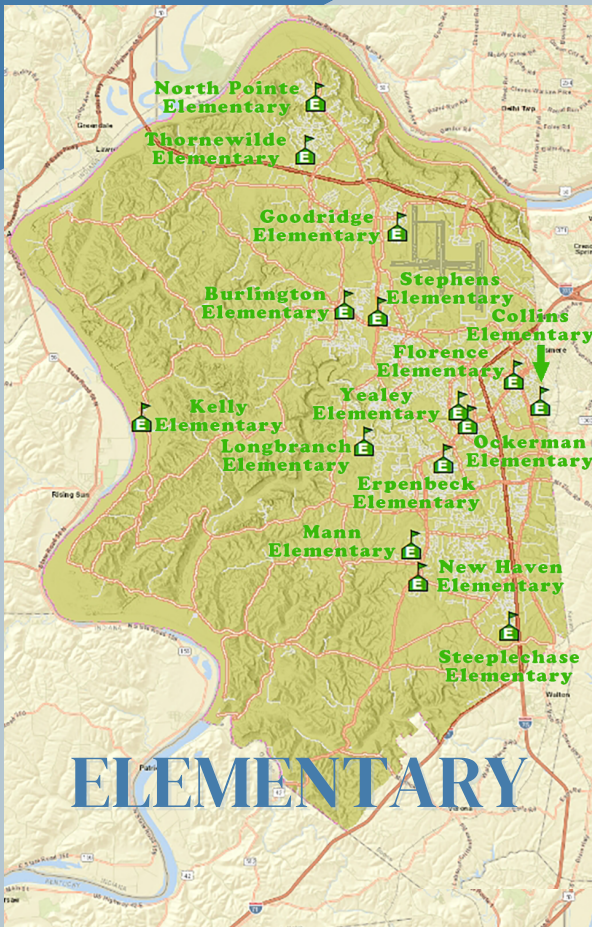
- Ryle High School is currently undergoing a flooring improvement which includes the removal of the infamous green carpet and replacing it with either updated carpeting or low maintenance rubber flooring. Due to the large scale of this project it was broken down into two phases with the first phase being the common area, cafeteria and hallways and the second phase being the library, auditorium, office area and classrooms.

Upcoming Projects

- Data Room Relocation to include newly constructed space located at Learning Support Services
- Conner High School Athletic Field House
- Major renovation project at Yealey Elementary to include classrooms, hallways, restrooms and mechanicals.
- Renovation project at Ignite Institute to provide additional instructional space and enhanced science labs.



OUR SCHOOLS



ELEMENTARY SCHOOLS



Burlington Elementary School

5946 N. Orient St.
Burlington, KY 41005
859-334-4440



Longbranch Elementary School

2805 Longbranch Road
Union, KY 41091
859-384-4500



Collins Elementary School

9000 Spruce Drive
Florence, KY 41042
859-282-2350



Mann Elementary School

10435 US Hwy. 42
Union, KY 41091
859-384-5000



Erpenbeck Elementary School

9001 Wetherington Blvd.
Florence, KY 41042
859-384-7200



New Haven Elementary School

10854 US Highway 42
Union, KY 41091
859-384-5325



Florence Elementary School

103 Center Street
Florence, KY 41042
859-282-2610



North Pointe Elementary School

875 North Bend Rd
Hebron, KY 41048
859-334-7000



Goodridge Elementary School

**3330 Cougar Path Road
Hebron, KY 41048
859-334-4420**



Ockerman Elementary School

**8250 US 42
Florence, KY 41042
859-282-4620**



Kelly Elementary School

**6775 McVille Road
Burlington, KY 41005
859-334-4450**



Steeplechase Elementary School

**12000 Grand National Blvd
Walton, KY 41094
859-485-3500**



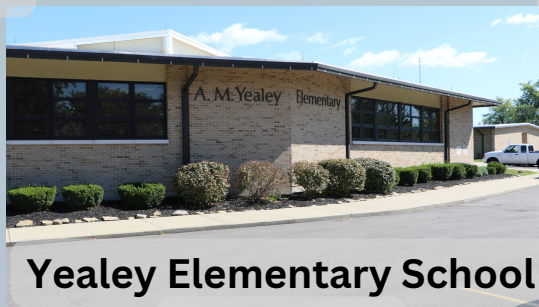
Stephens Elementary School

**5687 Hwy 237
Burlington, KY 41005
859-334-4460**



Thornwilde Elementary School

**1760 Elmburn Lane
Hebron, KY 41048
859-586-3900**



Yealey Elementary School

**10 Yealey Dr.
Florence, KY 41042
859-282-3333**

MIDDLE SCHOOLS



Ballyshannon Middle School

**7515 Shamrock Ave.
Union, KY 41091
859-905-2620**



Conner Middle School

**3300 Cougar Path
Hebron, KY 41048
859-334-4410**



Camp Ernst Middle School

**6515 Camp Ernst Road
Burlington, KY 41005
859-534-4000**



Gray Middle School

**10400 Hwy 42
Union, KY 41091
859-384-5333**



Jones Middle School

**8000 Spruce Drive
Florence, KY 41042
859-282-4610**



Ockerman Middle School

**8300 US 42
Florence, KY 41042
859-282-3240**

HIGH SCHOOLS



Boone County Area Technology

**3320 Cougar Path
Hebron, KY 41048
859-689-7855**



Cooper High School

**2855 Longbranch Road
Union, KY 41091
859-384-5040**



Boone County High School

**7056 Burlington Pike
Florence, KY 41042
859-282-5655**



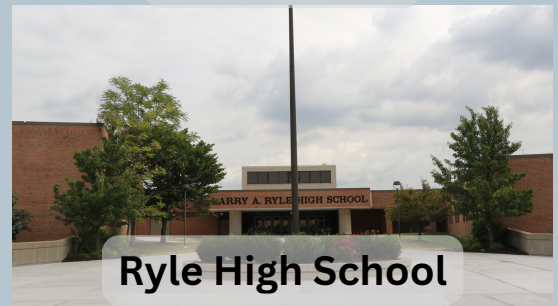
Ignite Institute

**37 Atlantic Avenue
Erlanger, KY 41018
859-817-3570**



Conner High School

**3310 Cougar Path
Hebron, KY 41048
859-334-4400**



Ryle High School

**10379 U.S. Hwy 42
Union, KY 41091
859-384-5300**



RISE Academy

**99 Center Street
Florence, KY 41042
859.282.2163**

BOONE COUNTY SCHOOLS

The 21st century skills of critical thinking and communication are intentionally planned for and taught in Boone County. Additionally, teachers provide opportunities for all students to be challenged within their zone of proximal development. Our schools create project/problem/ passion based learning experiences for students to apply core knowledge, concepts and 21st century skills, within and across disciplines, to solve real-world problems. PBL experiences intentionally focus on building creativity and collaboration skills, as well as providing choice.



CONTACT US



859.283.1003



boone.kyschools.us



8330 US Highway 42
Florence, KY 41042