

LEA Name : Elizabethtown Area SD
Address : 600 E High St
Elizabethtown , PA 17022

County : Lancaster
AUN Number : 113362403
LEA Type : SD

Annual Financial Report
Accuracy Certification Statement
For Fiscal Year Ending
6/30/2019


Pennsylvania Department of Education
&
Office of Comptroller Operations

PDE-2056: Intermediate Unit
PDE-2057: School District, AVTS/CTC, Charter School,
and Special Program Jointure

CERTIFICATION: By signing this page I agree that the electronic data submitted is a complete and accurate statement of the financial operations and status of the local education agency for the fiscal year. It has been prepared in accordance with generally accepted accounting principles and established Commonwealth of PA reporting guidelines.



Chief School Administrator Signature



Date



Board Secretary Signature



Date

Jeffrey Ammerman

Contact Person

jeffrey_ammerman@etownschools.org

Contact Person E-mail Address

(717)367-1521

Ext :10009

Contact Person Telephone Number

Contact Person Fax Number

(Pursuant to PA School Code Section 218(b))

County : Lancaster

12/31/2019

Date _____

Auditing Firm:

CERTIFICATION: By signing this page I agree that the financial statements of the school have been properly audited as noted above pursuant to Article XXIV, and in the auditor's professional opinion, the Annual Financial Report (PDE-2057) submitted on the date referenced is materially consistent with the audited financial statements.

Chief School Administrator

Board Secretary

Signature _____ Date _____

Signature _____ Date _____

Jeffrey Ammerman

Contact Person

jeffrey_ammerman@etownschools.org

Contact Person E-mail Address

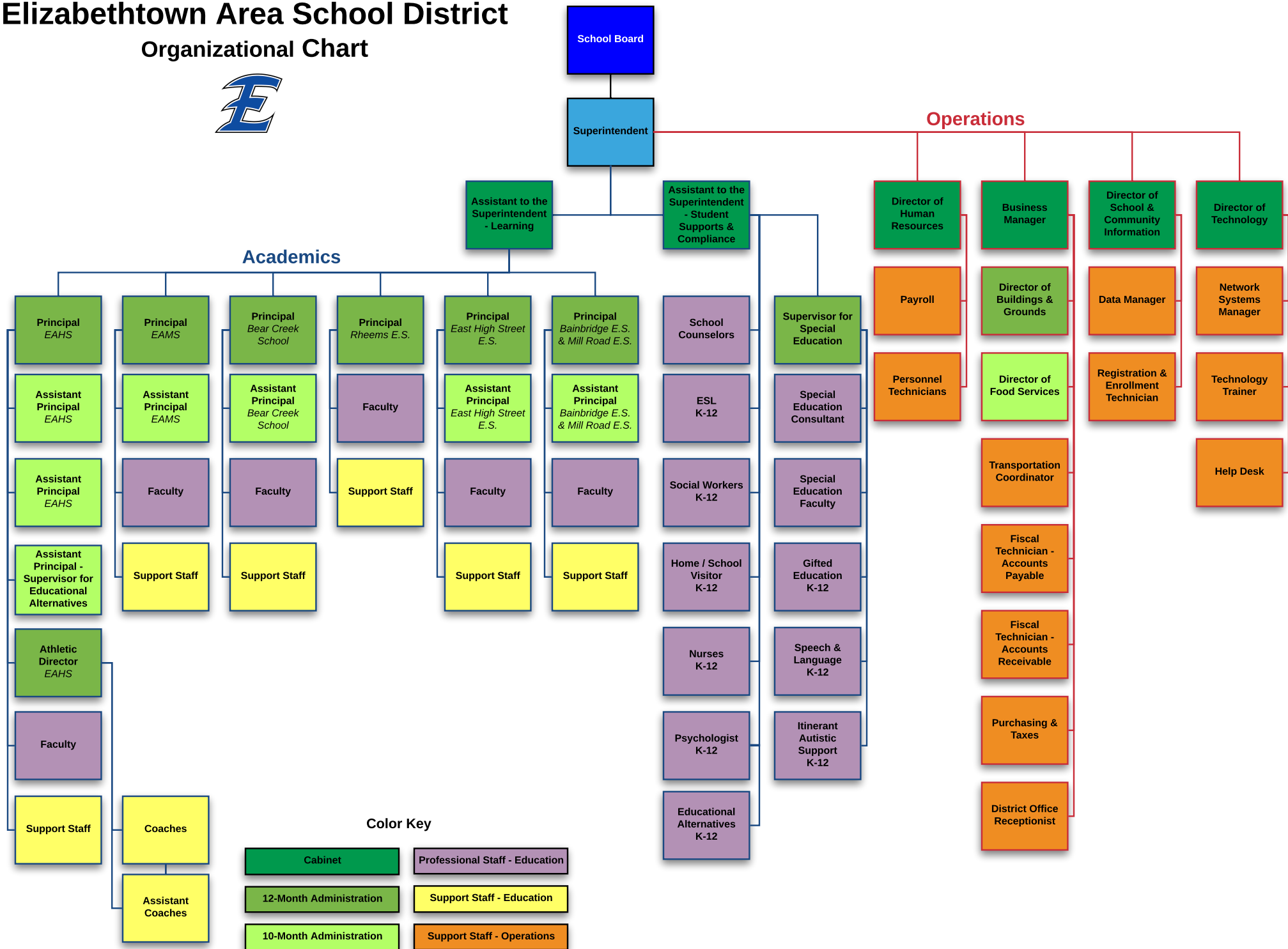
(717)367-1521 Ext :10009

Contact Person Telephone Number

Contact Person Fax Number

Elizabethtown Area School District

Organizational Chart



<u>Val Number</u>	<u>Description</u>	<u>Justification</u>
42420	<p>Expenditure Detail: Total current year 2700-513 expenditure varies from prior year by 10%. Correct the data or enter a justification.</p> <p>2700-513, AFR Exp Detail: \$2,373,833.46 2700-513, PY AFR Amount: \$1,877,398.11</p>	<p>A school that was closed was reopened adding to expenses, coupled with increased homeless and special education transportation.</p>

LEA : 113362403 Elizabethtown Area SD

Printed 12/5/2019 8:24:51 AM

Amounts Expressed in Whole Dollars		<u>General Fund</u> <u>(10)</u>	<u>Public Purpose Trust</u> <u>(27)</u>	<u>Other Compt Approved</u> <u>(28)</u>	<u>Athletic / Activity</u> <u>(29)</u>	<u>Capital Reserve (690.</u> <u>1850)</u> <u>(31)</u>
Assets And Deferred Outflows Of Resources						
Assets						
0100	Cash and Cash Equivalents	3,688,683				
0110	Investments	6,233,191				
0120	Taxes Receivable	1,350,393				
0130	Due From Other Funds	279,150				
0141	Due From Other Governments	3,465,737				
0142	State Revenue Receivable					
0143	Federal Revenue Receivable					
0145	Other Intergovernmental Revenue Receivable					
0146	Due from Primary Government					
0147	Due from Component Unit					
0150	Other Receivables	41,823				
0170	Inventories	104,803				
0180	Prepaid Expenses (Expenditures)	310,550				
0190	Other Current Assets					
Total Assets		\$15,474,330				
0910	Deferred Outflows of Resources					
Total Assets And Deferred Outflows Of Resources		\$15,474,330				

LEA : 113362403 Elizabethtown Area SD

Printed 12/5/2019 8:24:51 AM

Amounts Expressed in Whole Dollars		<u>Capital Reserve (1431</u> <u>(32)</u>	<u>Other Capital Projects</u> <u>Fund</u> <u>(39)</u>	<u>Debt Service</u> <u>(40)</u>	<u>Permanent</u> <u>(90)</u>	<u>Total Governmental</u> <u>Funds</u>
Assets And Deferred Outflows Of Resources						
Assets						
0100	Cash and Cash Equivalents	67,429	932,114			4,688,226
0110	Investments	2,665,184	53,985			8,952,360
0120	Taxes Receivable					1,350,393
0130	Due From Other Funds	712,952	818			992,920
0141	Due From Other Governments					3,465,737
0142	State Revenue Receivable					
0143	Federal Revenue Receivable					
0145	Other Intergovernmental Revenue Receivable					
0146	Due from Primary Government					
0147	Due from Component Unit					
0150	Other Receivables					41,823
0170	Inventories					104,803
0180	Prepaid Expenses (Expenditures)					310,550
0190	Other Current Assets					
Total Assets		\$3,445,565	\$986,917			\$19,906,812
0910	Deferred Outflows of Resources					
Total Assets And Deferred Outflows Of Resources		\$3,445,565	\$986,917			\$19,906,812

Amounts Expressed in Whole Dollars	<u>General Fund</u> <u>(10)</u>	<u>Public Purpose Trust</u> <u>(27)</u>	<u>Other Compt Approved</u> <u>(28)</u>	<u>Athletic / Activity</u> <u>(29)</u>	<u>Capital Reserve (690.</u> <u>1850)</u> <u>(31)</u>
Liabilities And Deferred Inflows Of Resources And Fund Balances					
Liabilities					
0400 Due to Other Funds	1,597,716				
0411 Due to Other Governments	214,461				
0412 Due to Primary Government					
0413 Due to Component Unit					
0420 Accounts Payable	467,506				
0430 Contracts Payable					
0440 Current Portion of Long-Term Debt					
0450 Short-Term Payables					
0461 Accrued Salaries and Benefits	5,805,994				
0462 Payroll Deductions and Withholding	281,427				
0480 Unearned Revenues	87,758				
0490 Other Current Liabilities					
Total Liabilities	\$8,454,862				
0950 Deferred Inflows of Resources	457,667				
Fund Balances					
0810 Nonspendable Fund Balance	415,353				
0820 Restricted Fund Balance					
0830 Committed Fund Balance	1,000,000				
0840 Assigned Fund Balance	700,000				
0850 Unassigned Fund Balance	4,446,448				
Total Fund Balances	\$6,561,801				
Total Liabilities, Deferred Inflows Of Resources And Fund Balances	\$15,474,330				

LEA : 113362403 Elizabethtown Area SD

Printed 12/5/2019 8:24:51 AM

Amounts Expressed in Whole Dollars		<u>Capital Reserve (1431)</u> <u>(32)</u>	<u>Other Capital Projects</u> <u>Fund</u> <u>(39)</u>	<u>Debt Service</u> <u>(40)</u>	<u>Permanent</u> <u>(90)</u>	<u>Total Governmental</u> <u>Funds</u>
Liabilities And Deferred Inflows Of Resources And Fund Balances						
Liabilities						
0400	Due to Other Funds					1,597,716
0411	Due to Other Governments					214,461
0412	Due to Primary Government					
0413	Due to Component Unit					
0420	Accounts Payable	39,593	97,493			604,592
0430	Contracts Payable					
0440	Current Portion of Long-Term Debt					
0450	Short-Term Payables					
0461	Accrued Salaries and Benefits					5,805,994
0462	Payroll Deductions and Withholding					281,427
0480	Unearned Revenues					87,758
0490	Other Current Liabilities					
Total Liabilities		\$39,593	\$97,493			\$8,591,948
0950	Deferred Inflows of Resources					457,667
Fund Balances						
0810	Nonspendable Fund Balance					415,353
0820	Restricted Fund Balance	3,405,972	889,424			4,295,396
0830	Committed Fund Balance					1,000,000
0840	Assigned Fund Balance					700,000
0850	Unassigned Fund Balance					4,446,448
Total Fund Balances		\$3,405,972	\$889,424			\$10,857,197
Total Liabilities, Deferred Inflows Of Resources And Fund Balances		\$3,445,565	\$986,917			\$19,906,812

Amounts Expressed in Whole Dollars	<u>General Fund</u> <u>(10)</u>	<u>Public Purpose Trust</u> <u>(27)</u>	<u>Other Compt Approved</u> <u>(28)</u>	<u>Athletic / Activity</u> <u>(29)</u>	<u>Capital Reserve (690.</u> <u>1850)</u> <u>(31)</u>
Revenues					
6000 Revenue from Local Sources	43,814,192				
7000 Revenue from State Sources	19,389,792				
8000 Revenue from Federal Sources	861,425				
Total Revenues	\$64,065,409				
Expenditures					
1000 Instruction	39,038,001				
2000 Support Services	17,809,599				
3000 Operation of Non-Instructional Services	1,315,416				
4000 Facilities Acquisition, Construction and Improvement Services					
5110 Debt Service					
5130 Refund of Prior Year Revenues / Receipts					
Total Expenditures	\$58,163,016				
Excess (Deficiency) Of Revenues Over Expenditures	\$5,902,393				
Other Financing Sources (Uses)					
9110 Face Value of Bonds Issued					
9120 Proceeds from Refunding of Bonds					
9130 Bond Premiums					
9200 Proceeds from Extended-Term Financing					
9300 Interfund Transfers - IN					
9400 Sale of or Compensation for Loss of Fixed Assets	(8,440)				
9710 Transfers from Component Units					
9720 Transfers from Primary Governments					
9910 Other Financing Sources Not Listed in the 9000 Series					
9990 Insurance Recoveries					
5120 Debt Service – Refunded Bonds					
5150 Bond Discounts					
5200 Interfund Transfers – Out	4,244,905				
5300 Transfers Out to Component Units/Primary Governments					
Total Other Financing Sources (Uses)	(\$4,253,345)				

LEA : 113362403 Elizabethtown Area SD

Printed 12/5/2019 8:24:56 AM

Amounts Expressed in Whole Dollars	Capital Reserve (1431) (32)	Other Capital Projects Fund (39)	Debt Service (40)	Permanent (90)	Total Governmental Funds
Revenues					
6000 Revenue from Local Sources	70,572	32,899			43,917,663
7000 Revenue from State Sources					19,389,792
8000 Revenue from Federal Sources					861,425
Total Revenues	\$70,572	\$32,899			\$64,168,880
Expenditures					
1000 Instruction		235,982			39,273,983
2000 Support Services	607,517	15,898			18,433,014
3000 Operation of Non-Instructional Services					1,315,416
4000 Facilities Acquisition, Construction and Improvement Services	287,324	894,984			1,182,308
5110 Debt Service			3,728,109		3,728,109
5130 Refund of Prior Year Revenues / Receipts					
Total Expenditures	\$894,841	\$1,146,864	\$3,728,109		\$63,932,830
Excess (Deficiency) Of Revenues Over Expenditures	(\$824,269)	(\$1,113,965)	(\$3,728,109)		\$236,050
Other Financing Sources (Uses)					
9110 Face Value of Bonds Issued					
9120 Proceeds from Refunding of Bonds					
9130 Bond Premiums					
9200 Proceeds from Extended-Term Financing					
9300 Interfund Transfers - IN	500,000		3,728,109		4,228,109
9400 Sale of or Compensation for Loss of Fixed Assets					(8,440)
9710 Transfers from Component Units					
9720 Transfers from Primary Governments					
9910 Other Financing Sources Not Listed in the 9000 Series					
9990 Insurance Recoveries	212,952				212,952
5120 Debt Service – Refunded Bonds					
5150 Bond Discounts					
5200 Interfund Transfers – Out					4,244,905
5300 Transfers Out to Component Units/Primary Governments					
Total Other Financing Sources (Uses)	\$712,952		\$3,728,109		\$187,716

Amounts Expressed in Whole Dollars		<u>General Fund</u> <u>(10)</u>	<u>Public Purpose Trust</u> <u>(27)</u>	<u>Other Compt Approved</u> <u>(28)</u>	<u>Athletic / Activity</u> <u>(29)</u>	<u>Capital Reserve</u> <u>(690.</u> <u>1850)</u> <u>(31)</u>
Special And Extraordinary Items						
9920	Special Items – Gains					
9930	Extraordinary Items – Gains					
5520	Special Items – Losses					
5530	Extraordinary Items – Losses					
Net Change In Fund Balances		\$1,649,048				
Fund Balance						
0001	Fund Balance - Beginning of Fiscal Year	4,912,752				
Fund Balance - End Of Year		\$6,561,800				

Amounts Expressed in Whole Dollars		<u>Capital Reserve (1431</u> <u>(32)</u>	<u>Other Capital Projects</u> <u>Fund</u> <u>(39)</u>	<u>Debt Service</u> <u>(40)</u>	<u>Permanent</u> <u>(90)</u>	<u>Total Governmental</u> <u>Funds</u>
Special And Extraordinary Items						
9920 Special Items – Gains						
9930 Extraordinary Items – Gains						
5520 Special Items – Losses						
5530 Extraordinary Items – Losses						
Net Change In Fund Balances		(\$111,317)	(\$1,113,965)			\$423,766
Fund Balance						
0001 Fund Balance - Beginning of Fiscal Year		3,517,289	2,003,386			10,433,427
Fund Balance - End Of Year		\$3,405,972	\$889,421			\$10,857,193

LEA : 113362403 Elizabethtown Area SD

Printed 12/5/2019 8:24:58 AM

Amounts Expressed in Whole Dollars	Food Service (51)	Child Care Operations (52)	Other Enterprise (58)	TOTAL	Internal Service (60)
Assets And Deferred Outflows Of Resources					
Current Assets					
0100 Cash and Cash Equivalents	336,257			336,257	
0110 Investments					
0130 Due From Other Funds	(258,383)			(258,383)	
0141 Due From Other Governments					
0142 State Revenue Receivable					
0143 Federal Revenue Receivable					
0146 Due from Primary Government					
0147 Due from Component Unit					
0150 Other Receivables	8,494			8,494	
0170 Inventories	131,448			131,448	
0180 Prepaid Expenses (Expenditures)					
0190 Other Current Assets					
Total Current Assets	\$217,816			\$217,816	
Noncurrent Assets					
0211 Land					
0212 Site Improvements (Net)					
0220 Buildings and Building Improvements (Net)					
0230 Machinery, Equipment and Furniture (Net)	2,109			2,109	
0250 Construction in Progress					
0260 Long Term Prepayments					
0290 Other Noncurrent Assets					
Total Noncurrent Assets	\$2,109			\$2,109	
0910 Deferred Outflows of Resources	174,000			174,000	
Total Assets And Deferred Outflows Of Resources	\$393,925			\$393,925	

LEA : 113362403 Elizabethtown Area SD

Printed 12/5/2019 8:24:58 AM

Amounts Expressed in Whole Dollars	Food Service (51)	Child Care Operations (52)	Other Enterprise (58)	TOTAL	Internal Service (60)
Liabilities And Deferred Inflows Of Resources And Net Position					
Current Liabilities					
0400 Due to Other Funds					
0411 Due to Other Governments					
0413 Due to Component Unit					
0420 Accounts Payable	126,163			126,163	
0430 Contracts Payable					
0440 Current Portion of Long-Term Debt					
0450 Short-Term Payables					
0461 Accrued Salaries and Benefits	57			57	
0462 Payroll Deductions and Withholding					
0480 Unearned Revenues	85,303			85,303	
0490 Other Current Liabilities					
Total Current Liabilities	\$211,523			\$211,523	
Noncurrent Liabilities					
0510 Bonds Payable					
0520 Extended-Term Financing Agreements Payable					
0530 Lease-Purchase Obligations					
0540 Accumulated Compensated Absences					
0550 Authority Lease Obligations					
0560 Other Post-Employment Benefits (OPEB)	84,000			84,000	
0570 Net Pension Liability	934,000			934,000	
0599 Other Noncurrent Liabilities					
Total Noncurrent Liabilities	\$1,018,000			\$1,018,000	
Total Liabilities	\$1,229,523			\$1,229,523	
0950 Deferred Inflows of Resources	658,600			658,600	
Net Position					
0791 Net Investment in Capital Assets	2,109			2,109	
0008 Restricted Net Position (0792 – 0798)					
0799 Unrestricted Net Position	(1,496,307)			(1,496,307)	
Total Net Position	(\$1,494,198)			(\$1,494,198)	
Total Liabilities And Deferred Inflows Of Resources And Net Position	\$393,925			\$393,925	

Amounts Expressed in Whole Dollars	<u>Food Service</u> <u>(51)</u>	<u>Child Care Operations</u> <u>(52)</u>	<u>Other Enterprise</u> <u>(58)</u>	<u>TOTAL</u>	<u>Internal Service</u> <u>(60)</u>
Operating Revenues					
6600 Food Service Revenue	688,060			688,060	
0071 Charges for Services					
0072 Other Operating Revenue					
Total Operating Revenues	\$688,060			\$688,060	
Operating Expenses					
100 Personnel Services – Salaries	292,145			292,145	
200 Personnel Services – Employee Benefits	40,543			40,543	
300 Purchased Professional and Technical Services					
400 Purchased Property Services	24,964			24,964	
500 Other Purchased Services	875,116			875,116	
600 Supplies	181,847			181,847	
740 Depreciation	88			88	
810 Dues and Fees					
890 Miscellaneous Expenditures	31,026			31,026	
Total Operating Expenses	\$1,445,729			\$1,445,729	
Operating Income (Loss)	(\$757,669)			(\$757,669)	
Non Operating Revenues (Expenses)					
6500 Earnings on Investments	1,392			1,392	
6920 Contributions and Donations from Private Sources					
6930 Gains or Losses on Sale of Fixed Assets					
6991 Refunds of a Prior Year Expenditure					
7000 Revenue from State Sources	101,150			101,150	
8000 Revenue from Federal Sources	723,264			723,264	
9990 Insurance Recoveries					
820 Claims and Judgments Against the LEA					
830 Interest					
TOTAL Non Operating Revenues (Expenses)	\$825,806			\$825,806	
Income (Loss) Before Contributions And Transfers	\$68,137			\$68,137	

Amounts Expressed in Whole Dollars	<u>Food Service</u> <u>(51)</u>	<u>Child Care Operations</u> <u>(52)</u>	<u>Other Enterprise</u> <u>(58)</u>	<u>TOTAL</u>	<u>Internal Service</u> <u>(60)</u>
Contributions, Transfers, and Special and Extraordinary Items					
5200 Interfund Transfers – Out					
5300 Transfers Out to Component Units/Primary Governments					
5520 Special Items – Losses					
5530 Extraordinary Items – Losses					
9300 Interfund Transfers - IN	16,797			16,797	
9500 Capital Contributions					
9700 Transfers IN From Component Units/Primary Governments					
9920 Special Items – Gains					
9930 Extraordinary Items – Gains					
Change In Net Position	\$84,934			\$84,934	
0002 Net Position - Beginning of Fiscal Year	(1,618,448)			(1,618,448)	
0003 Accounting Changes / Residual Equity Transfers	39,316			39,316	
Net Position - End Of Year	(\$1,494,198)			(\$1,494,198)	

LEA : 113362403 Elizabethtown Area SD

Printed 12/5/2019 8:25:06 AM

Amounts Expressed in Whole Dollars	<u>Food Service</u> <u>(51)</u>	<u>Child Care Operations</u> <u>(52)</u>	<u>Other Enterprise</u> <u>(58)</u>	<u>TOTAL</u>	<u>Internal Service(60)</u>
Cash Flows From Operating Activities					
0011 Cash Receipts From Users	684,975			684,975	
0012 Cash Receipts From Assessments Made to Other Funds					
0013 Cash Receipts From Earnings on Investments					
0014 Cash Receipts From Other Operating Revenue					
0015 Cash Payments To Employees For Services	173,258			173,258	
0016 Cash Payments For Insurance Claims					
0017 Cash Payments To Suppliers For Goods and Services	1,067,432			1,067,432	
0018 Cash Payments For Other Operating Expenses					
Net Cash Provided By (Used For) Operating Activities	(\$555,715)			(\$555,715)	
Cash Flows From Non-Capital Financing Activities					
0021 Receipts From Local Sources - 6000					
0022 Receipts From State Sources - 7000	146,890			146,890	
0023 Receipts From Federal Sources -8000	673,583			673,583	
0024 Notes and Loans Received (Repaid)					
0025 Interest Paid on Notes/Loans - 5100-830					
0026 Operating Transfers In (Out)/Residual Equity Trans					
0027 Operating Transfers In (Out) Primary Government / Comp Unit					
0028 Receipts From Refund of Prior Year Expenditures - 6991					
0029 Special and Extraordinary Gains (losses)					
0030 Receipts from Insurance Recoveries -9990					
Net Cash Prov By (Used for) Non-Capital Financing Activities	\$820,473			\$820,473	
Cash Flows From Capital and Related Financing Activities					
0031 Payments For Fac Acq, Const, and Imp - 4000					
0032 Gain / (Loss) on Sale of Fixed Assets - 6930					
0033 Proceeds From Extended Term Financing - 9200					
0034 Principal Paid on Financing Agreements					
0035 Interest Paid on Financing Agreements - 5100-830					
0036 (Inc) Dec in Contributed Capital					
Net Cash Prov By (Used for) Capital and Related Financing Activities					
Cash Flows From Investing Activities					
0041 Earnings on Investments - 6500	1,392			1,392	
0042 Purchase of Inv Securities / Deposits to Inv Pools					
0043 Receipts From Investment Pool Withdrawals					
0044 Proceeds from Sale and Maturity of Inv Securities					

LEA : 113362403 Elizabethtown Area SD

Printed 12/5/2019 8:25:06 AM

0045 Loans Received (Paid)

Net Cash Prov By (Used for) Investing Activities	\$1,392	\$1,392
--	---------	---------

LEA : 113362403 Elizabethtown Area SD

Printed 12/5/2019 8:25:06 AM

	Food Service (51)	Child Care Operations (52)	Other Enterprise (58)	TOTAL	Internal Service (60)
Net Increase (Decrease) in Cash Flows	266,150			266,150	
0004 Cash and Cash Equivalents Beginning of Year	70,107			70,107	
Cash and Cash Equivalents at Year End	\$336,257			\$336,257	
Reconciliation of Operating Income (Loss) To Net Cash Provided by (Used For) Operating Activities					
0005 Operating Income (Loss) per REP	(757,669)			(757,669)	
Adjustments					
0051 Depreciation and Net Amortization	88			88	
0052 Provision for Uncollectible Accounts					
0053 Other Adjustments	138,845			138,845	
Effect of Changes in Assets, Liabilities, Deferred Outflows and Deferred Inflows					
0054 (Inc) Dec In Accounts Receivable (0120-0150)					
0055 Advances to Other Funds (0160)	141,843			141,843	
0056 (Inc) Dec in Inventories (0170)	9,061			9,061	
0057 (Inc) Dec in Prepaid Expenses (0180)					
0058 (Inc) Dec in Other Current or Noncurrent Assets	(5,414)			(5,414)	
0064 Deferred Outflows (0910)					
0059 Inc (Dec) in Accounts Payable (0400-0450)	9,056			9,056	
0060 Inc (Dec) in Accrued Salaries/Benefits (0461)	57			57	
0065 Inc (Dec) in Net Pension Liabilities (0570)	(133,400)			(133,400)	
0066 Inc (Dec) in Other Postemp Benefit Oblig (0560)					
0061 Inc (Dec) in Payroll Deductions/Withholding (0462)					
0062 Inc (Dec) in Unearned Revenue (0480)	25,021			25,021	
0063 Inc (Dec) in Other Current or Noncurrent Liabilities	16,797			16,797	
0067 Deferred Inflows (0950)					
Total Adjustments	\$201,954			\$201,954	
Cash Provided By (Used for) Total	(\$555,715)			(\$555,715)	

COMBINED STATEMENT OF CASH FLOWS
SCHEDULE OF NONCASH INVESTING, CAPITAL, AND FINANCING ACTIVITIES

Explanation of Transaction and Balance Sheet Effect	Amount
Total	

LEA : 113362403 Elizabethtown Area SD

Printed 12/5/2019 8:25:07 AM

Amounts Expressed in Whole Dollars	<u>Private Purpose Trust</u> <u>(71)</u>	<u>Investment Trust</u> <u>(72)</u>	<u>Pension Trust</u> <u>(73)</u>	<u>Activity</u> <u>(81)</u>
Assets And Deferred Outflows Of Resources				
Assets				
0100 Cash and Cash Equivalents	455,658			98,938
0110 Investments				
0130 Due From Other Funds				
0147 Due from Component Unit				
0150 Other Receivables				
0170 Inventories				
0180 Prepaid Expenses (Expenditures)				
0190 Other Current Assets				
0220 Buildings and Building Improvements (Net)				
0230 Machinery, Equipment and Furniture (Net)				
Total Assets	\$455,658			\$98,938
0910 Deferred Outflows of Resources				
Total Assets And Deferred Outflows Of Resources	\$455,658			\$98,938

LEA : 113362403 Elizabethtown Area SD

Printed 12/5/2019 8:25:07 AM

Amounts Expressed in Whole Dollars

	<u>Other Agency</u> <u>(89)</u>	<u>Discrete Component Units</u> <u>(98)</u>	<u>Discrete Component Units</u> <u>(99)</u>	<u>Total Fiduciary Funds</u>
Assets And Deferred Outflows Of Resources				
Assets				
0100 Cash and Cash Equivalents				554,596
0110 Investments				
0130 Due From Other Funds				
0147 Due from Component Unit				
0150 Other Receivables				
0170 Inventories				
0180 Prepaid Expenses (Expenditures)				
0190 Other Current Assets				
0220 Buildings and Building Improvements (Net)				
0230 Machinery, Equipment and Furniture (Net)				
Total Assets				\$554,596
0910 Deferred Outflows of Resources				
Total Assets And Deferred Outflows Of Resources				\$554,596

LEA : 113362403 Elizabethtown Area SD

Printed 12/5/2019 8:25:07 AM

Amounts Expressed in Whole Dollars	<u>Private Purpose Trust</u> <u>(71)</u>	<u>Investment Trust</u> <u>(72)</u>	<u>Pension Trust</u> <u>(73)</u>	<u>Activity</u> <u>(81)</u>
Liabilities, Deferred Inflows Of Resources And Net Position				
Liabilities				
0400 Due to Other Funds				4,542
0411 Due to Other Governments				
0412 Due to Primary Government				
0413 Due to Component Unit				
0420 Accounts Payable	5,150			21,977
0430 Contracts Payable				
0450 Short-Term Payables				
0461 Accrued Salaries and Benefits				
0462 Payroll Deductions and Withholding				
0480 Unearned Revenues				
0490 Other Current Liabilities				72,419
Total Liabilities	\$5,150			\$98,938
0950 Deferred Inflows of Resources				
Net Position				
0791 Net Investment in Capital Assets				
0009 Restricted Net Position (0792 – 0798)				
0799 Unrestricted Net Position	450,508			
Total Net Position	\$450,508			
Total Liabilities, Deferred Inflows Of Resources And Net Position	\$455,658			\$98,938

LEA : 113362403 Elizabethtown Area SD

Printed 12/5/2019 8:25:07 AM

Amounts Expressed in Whole Dollars

<u>Other Agency</u> <u>(89)</u>	<u>Discrete Component Units</u> <u>(98)</u>	<u>Discrete Component Units</u> <u>(99)</u>	<u>Total Fiduciary Funds</u>
------------------------------------	--	--	------------------------------

Liabilities, Deferred Inflows Of Resources And Net Position

Liabilities

0400 Due to Other Funds				4,542
0411 Due to Other Governments				
0412 Due to Primary Government				
0413 Due to Component Unit				
0420 Accounts Payable				27,127
0430 Contracts Payable				
0450 Short-Term Payables				
0461 Accrued Salaries and Benefits				
0462 Payroll Deductions and Withholding				
0480 Unearned Revenues				
0490 Other Current Liabilities				72,419

Total Liabilities				\$104,088
--------------------------	--	--	--	------------------

0950 Deferred Inflows of Resources

Net Position

0791 Net Investment in Capital Assets				
0009 Restricted Net Position (0792 – 0798)				
0799 Unrestricted Net Position				450,508

Total Net Position				\$450,508
---------------------------	--	--	--	------------------

Total Liabilities, Deferred Inflows Of Resources And Net Position				\$554,596
--	--	--	--	------------------

LEA : 113362403 Elizabethtown Area SD

Printed 12/5/2019 8:25:09 AM

Amounts Expressed in Whole Dollars	<u>Private Purpose Trust</u> <u>(71)</u>	<u>Investment Trust</u> <u>(72)</u>	<u>Pension Trust</u> <u>(73)</u>	<u>Discrete Component</u> <u>Units</u> <u>(98)</u>	<u>Discrete Component</u> <u>Units</u> <u>(99)</u>	<u>Total Fiduciary</u> <u>Funds</u>
Additions						
0091 Gifts and Contributions	20,609					20,609
0092 Other Additions	6,543					6,543
Deductions						
0093 Scholarships Awarded	17,600					17,600
0094 Other Deductions						
Change In Net Position	\$9,552					\$9,552
0006 Net Position – Beginning of Fiscal Year	440,956					440,956
0007 Net Position Held in Trust for Pension Benefits						
Net Position - End of Fiscal Year	\$450,508					\$450,508

LEA : 113362403 Elizabethtown Area SD

General Fund (10)

Printed 12/5/2019 8:25:11 AM

Page - 1 of 4

	Revenue Reported In Current Year	Current Year Tax Accrual	Prior Year Tax Accrual	Taxes Collected In Current Year
Revenue from Local Sources				
6111 Current Real Estate Taxes	34,056,033.84			34,056,033.84
6112 Interim Real Estate Taxes	379,616.14			379,616.14
6113 Public Utility Realty Taxes	37,576.09			37,576.09
6114 Payments in Lieu of Current Taxes - State / Local	959,108.00			959,108.00
6151 Current Act 511 Earned Income Taxes	4,174,959.37			4,174,959.37
6153 Current Act 511 Real Estate Transfer Taxes	700,420.36			700,420.36
6411 Delinquent Real Estate Taxes	578,190.91			578,190.91
6500 Earnings on Investments	387,753.18			
6700 Revenues from LEA Activities	174,390.54			
6831 Federal Revenue Received from Other Pennsylvania Public LEAs	155,718.79			
6832 Federal IDEA Revenue Received as Pass Through	651,128.00			
6890 Other Revenue from Intermediary Sources	642,152.53			
6910 Rentals	23,062.60			
6920 Contributions and Donations from Private Sources	85,645.97			
6944 Receipts from Other LEAs in Pennsylvania - Education	687,504.97			
6999 Other Revenues Not Specified Above	120,930.60			
TOTAL Revenue from Local Sources	\$43,814,191.89			\$40,885,904.71

	Revenue Reported In Current Year			
<u>Revenue from State Sources</u>				
7110 Basic Education Funding	8,985,069.87			
7160 Tuition for Orphans Subsidy	86,249.94			
7220 Vocational Education	53,876.04			
7271 Special Education funds for School-Aged Pupils	2,160,292.55			
7299 Program Revenues Not Listed Previously in the 7200 Series	104.91			
7311 Pupil Transportation Subsidy	873,481.15			
7312 Nonpublic and Charter School Pupil Transportation Subsidy	69,685.00			
7320 Rental and Sinking Fund Payments / Building Reimbursement Subsidy	427,543.87			
7330 Health Services (Medical, Dental, Nurse, Act 25)	75,752.42			
7340 State Property Tax Reduction Allocation	599,287.48			
7361 School Safety and Security Grants	25,000.00			
7505 Ready to Learn Block Grant	472,997.00			
7599 Other State Revenue Not Listed Elsewhere in the 7000 Series	120.00			
7810 State Share of Social Security and Medicare Taxes	1,051,710.69			
7820 State Share of Retirement Contributions	4,508,620.65			
TOTAL Revenue from State Sources	\$19,389,791.57			

Revenue Reported In Current Year				
Revenue from Federal Sources				
8514 NCLB, Title I - Improving the Academic Achievement of the Disadvantaged	450,414.00			
8515 NCLB, Title II - Preparing, Training and Recruiting High Quality Teachers and Principals	106,645.00			
8517 NCLB, Title IV - 21St Century Schools	22,361.25			
8610 Homeless Assistance Act	3,750.00			
8810 School-Based Access Medicaid Reimbursement Program (SBAP) Reimbursements (Access)	258,224.94			
8820 Medical Assistance Reimbursement for Administrative Claiming (Quarterly) Program	20,029.96			
TOTAL Revenue from Federal Sources	\$861,425.15			

	Revenue Reported In Current Year			
<u>Other Financing Sources</u>				
9400 Sale of or Compensation for Loss of Fixed Assets	(8,440.00)			
TOTAL Other Financing Sources	(\$8,440.00)			
TOTAL FROM ALL SOURCES	\$64,056,968.61			\$40,885,904.71

Revenue from Local Sources	43,814,191.89
Revenue from State Sources	19,389,791.57
Revenue from Federal Sources	861,425.15
Other Financing Sources	(8,440.00)
TOTAL FROM ALL SOURCES	\$64,056,968.61

LEA : 113362403 Elizabethtown Area SD

Printed 12/5/2019 8:25:17 AM

General Fund (10)

1000 Instruction		Total
100 <u>Personnel Services – Salaries</u>		
100 Personnel Services – Salaries		19,503,186.45
Total Personnel Services – Salaries		\$19,503,186.45
200 <u>Personnel Services – Employee Benefits</u>		
210 Group Insurance – Contracted Provider		293,917.10
220 Social Security Contributions		1,444,960.66
230 PSERS Retirement Contributions		6,501,867.43
260 Workers' Compensation		184,370.99
270 Group Insurance – Self-Insurance		3,608,060.79
291 Other Retirement Plans		36,687.00
Total Personnel Services – Employee Benefits		\$12,069,863.97
300 <u>Purchased Professional and Technical Services</u>		
322 Professional Educational Services – Ius		2,031,065.12
323 Professional Educational Services – Other Educational Agencies		47,482.00
329 Professional Educational Services – Other		704,375.23
330 Other Professional Services		18,370.48
340 Technical Services		495.00
360 Employee Training and Development Services		13,282.91
Total Purchased Professional and Technical Services		\$2,815,070.74
400 <u>Purchased Property Services</u>		
430 Repairs and Maintenance Services		12,645.63
440 Rentals		73,200.16
Total Purchased Property Services		\$85,845.79
500 <u>Other Purchased Services</u>		
510 Student Transportation Services		52,988.72
561 Tuition To Other School Districts Within the State		260,829.24
562 Tuition To Pennsylvania Charter Schools		1,155,751.38
564 Tuition To Career and Technology Centers		900,357.89
567 Tuition To Approved Private Schools (APS) and PA Chartered Schools for the Deaf and Blind		247,326.98
568 Tuition To Private Residential Rehabilitative Institutions (PRRI) [In-State] and Detention Centers		196,432.03
580 Travel		10,519.26
594 IU Payment By Withholding for Institutionalized Children's Programs – Special Classes		2,011.84
Total Other Purchased Services		\$2,826,217.34
600 <u>Supplies</u>		
610 General Supplies		656,469.41
630 Food		3,680.83
640 Books and Periodicals		8,370.32
650 Supplies & Fees – Technology Related		1,052,089.93
Total Supplies		\$1,720,610.49
800 <u>Other Objects</u>		
810 Dues and Fees		17,205.97

LEA : 113362403 Elizabethtown Area SD

Printed 12/5/2019 8:25:17 AM

General Fund (10)

1000 Instruction		<u>Total</u>
Total Other Objects		\$17,205.97
Total 1000 Instruction		\$39,038,000.75

LEA : 113362403 Elizabethtown Area SD

Printed 12/5/2019 8:25:17 AM

General Fund (10)

1100 Regular Programs – Elementary / Secondary	Elementary	Secondary	Federal	Total
100 Personnel Services – Salaries				
100 Personnel Services – Salaries	8,005,164.42	7,088,067.11	382,971.40	15,476,202.93
Total Personnel Services – Salaries	\$8,005,164.42	\$7,088,067.11	\$382,971.40	\$15,476,202.93
200 Personnel Services – Employee Benefits				
210 Group Insurance – Contracted Provider	102,141.51	112,740.17	4,820.07	219,701.75
220 Social Security Contributions	593,924.10	522,347.69	28,804.83	1,145,076.62
230 PSERS Retirement Contributions	2,665,739.90	2,367,796.79	128,027.40	5,161,564.09
260 Workers' Compensation	83,176.89	71,207.70		154,384.59
270 Group Insurance – Self-Insurance	1,382,670.85	1,252,464.24	48,849.99	2,683,985.08
291 Other Retirement Plans	11,375.00	17,475.00		28,850.00
Total Personnel Services – Employee Benefits	\$4,839,028.25	\$4,344,031.59	\$210,502.29	\$9,393,562.13
300 Purchased Professional and Technical Services				
322 Professional Educational Services – Ius	9,484.15	210,569.85		220,054.00
323 Professional Educational Services – Other Educational Agencies		5,452.00		5,452.00
329 Professional Educational Services – Other	274,558.81	225,939.02		500,497.83
330 Other Professional Services		6,000.00		6,000.00
Total Purchased Professional and Technical Services	\$284,042.96	\$447,960.87		\$732,003.83
400 Purchased Property Services				
430 Repairs and Maintenance Services	6,060.76	6,584.87		12,645.63
440 Rentals	13.92	2,769.96		2,783.88
Total Purchased Property Services	\$6,074.68	\$9,354.83		\$15,429.51
500 Other Purchased Services				
510 Student Transportation Services	34,280.50	18,708.22		52,988.72
561 Tuition To Other School Districts Within the State		8,911.67		8,911.67
562 Tuition To Pennsylvania Charter Schools	4,097.05	815,312.88		819,409.93
568 Tuition To Private Residential Rehabilitative Institutions (PRRI) [In-State] and Detention Centers	61.28	55,745.92		55,807.20
580 Travel	1,393.20	3,085.82		4,479.02
Total Other Purchased Services	\$39,832.03	\$901,764.51		\$941,596.54
600 Supplies				
610 General Supplies	159,241.46	388,274.17	2,468.75	549,984.38
630 Food	16.93	3,663.90		3,680.83
640 Books and Periodicals	7,217.78	411.20		7,628.98
650 Supplies & Fees – Technology Related	31,745.83	1,004,990.28	2,757.25	1,039,493.36
Total Supplies	\$198,222.00	\$1,397,339.55	\$5,226.00	\$1,600,787.55
800 Other Objects				
810 Dues and Fees	1,040.76	8,815.21		9,855.97
Total Other Objects	\$1,040.76	\$8,815.21		\$9,855.97
Total 1100 Regular Programs – Elementary / Secondary	\$13,373,405.10	\$14,197,333.67	\$598,699.69	\$28,169,438.46

LEA : 113362403 Elizabethtown Area SD

Printed 12/5/2019 8:25:17 AM

General Fund (10)

1110 Regular Programs	Elementary	Secondary	Federal	Total
100 <u>Personnel Services – Salaries</u>				
100 Personnel Services – Salaries	8,005,164.42	7,088,067.11		15,093,231.53
Total Personnel Services – Salaries	\$8,005,164.42	\$7,088,067.11		\$15,093,231.53
200 <u>Personnel Services – Employee Benefits</u>				
210 Group Insurance – Contracted Provider	102,141.51	112,740.17		214,881.68
220 Social Security Contributions	593,924.10	522,347.69		1,116,271.79
230 PSERS Retirement Contributions	2,665,739.90	2,367,796.79		5,033,536.69
260 Workers' Compensation	83,176.89	71,207.70		154,384.59
270 Group Insurance – Self-Insurance	1,382,670.85	1,252,464.24		2,635,135.09
291 Other Retirement Plans	11,375.00	17,475.00		28,850.00
Total Personnel Services – Employee Benefits	\$4,839,028.25	\$4,344,031.59		\$9,183,059.84
300 <u>Purchased Professional and Technical Services</u>				
322 Professional Educational Services – Ius	9,484.15	210,569.85		220,054.00
323 Professional Educational Services – Other Educational Agencies		5,452.00		5,452.00
329 Professional Educational Services – Other	274,558.81	225,939.02		500,497.83
330 Other Professional Services		6,000.00		6,000.00
Total Purchased Professional and Technical Services	\$284,042.96	\$447,960.87		\$732,003.83
400 <u>Purchased Property Services</u>				
430 Repairs and Maintenance Services	6,060.76	6,584.87		12,645.63
440 Rentals	13.92	2,769.96		2,783.88
Total Purchased Property Services	\$6,074.68	\$9,354.83		\$15,429.51
500 <u>Other Purchased Services</u>				
510 Student Transportation Services	34,280.50	18,708.22		52,988.72
561 Tuition To Other School Districts Within the State		8,911.67		8,911.67
562 Tuition To Pennsylvania Charter Schools	4,097.05	815,312.88		819,409.93
568 Tuition To Private Residential Rehabilitative Institutions (PRRI) [In-State] and Detention Centers	61.28	55,745.92		55,807.20
580 Travel	1,393.20	3,085.82		4,479.02
Total Other Purchased Services	\$39,832.03	\$901,764.51		\$941,596.54
600 <u>Supplies</u>				
610 General Supplies	159,241.46	388,274.17	2,468.75	549,984.38
630 Food	16.93	3,663.90		3,680.83
640 Books and Periodicals	7,217.78	411.20		7,628.98
650 Supplies & Fees – Technology Related	31,745.83	1,004,990.28	2,757.25	1,039,493.36
Total Supplies	\$198,222.00	\$1,397,339.55	\$5,226.00	\$1,600,787.55
800 <u>Other Objects</u>				
810 Dues and Fees	1,040.76	8,815.21		9,855.97
Total Other Objects	\$1,040.76	\$8,815.21		\$9,855.97
Total 1110 Regular Programs	\$13,373,405.10	\$14,197,333.67	\$5,226.00	\$27,575,964.77

LEA : 113362403 Elizabethtown Area SD

Printed 12/5/2019 8:25:17 AM

General Fund (10)

1190 Federally-Funded Regular Programs

	<u>Elementary</u>	<u>Secondary</u>	<u>Federal</u>	<u>Total</u>
100 <u>Personnel Services – Salaries</u>				
100 Personnel Services – Salaries			382,971.40	382,971.40
Total Personnel Services – Salaries			\$382,971.40	\$382,971.40
200 <u>Personnel Services – Employee Benefits</u>				
210 Group Insurance – Contracted Provider			4,820.07	4,820.07
220 Social Security Contributions			28,804.83	28,804.83
230 PSERS Retirement Contributions			128,027.40	128,027.40
270 Group Insurance – Self-Insurance			48,849.99	48,849.99
Total Personnel Services – Employee Benefits			\$210,502.29	\$210,502.29
Total 1190 Federally-Funded Regular Programs			\$593,473.69	\$593,473.69

LEA : 113362403 Elizabethtown Area SD

Printed 12/5/2019 8:25:17 AM

General Fund (10)

1200 Special Programs – Elementary / Secondary	Elementary	Secondary	Federal	Total
100 Personnel Services – Salaries				
100 Personnel Services – Salaries	1,470,324.08	1,705,523.45	139,680.73	3,315,528.26
Total Personnel Services – Salaries	\$1,470,324.08	\$1,705,523.45	\$139,680.73	\$3,315,528.26
200 Personnel Services – Employee Benefits				
210 Group Insurance – Contracted Provider	31,410.15	27,271.43	2,292.88	60,974.46
220 Social Security Contributions	109,209.22	127,449.77	10,663.86	247,322.85
230 PSERS Retirement Contributions	486,572.62	568,627.27	47,393.89	1,102,593.78
260 Workers' Compensation	10,538.09	13,295.31		23,833.40
270 Group Insurance – Self-Insurance	403,825.27	328,236.95	33,679.68	765,741.90
291 Other Retirement Plans		7,837.00		7,837.00
Total Personnel Services – Employee Benefits	\$1,041,555.35	\$1,072,717.73	\$94,030.31	\$2,208,303.39
300 Purchased Professional and Technical Services				
322 Professional Educational Services – Ius	874,032.55	933,723.57		1,807,756.12
329 Professional Educational Services – Other	77.32	15,387.30	184,326.00	199,790.62
330 Other Professional Services	5.46	1,086.21		1,091.67
340 Technical Services		495.00		495.00
Total Purchased Professional and Technical Services	\$874,115.33	\$950,692.08	\$184,326.00	\$2,009,133.41
400 Purchased Property Services				
440 Rentals	17.48	3,477.52		3,495.00
Total Purchased Property Services	\$17.48	\$3,477.52		\$3,495.00
500 Other Purchased Services				
561 Tuition To Other School Districts Within the State	3,666.15	248,251.42		251,917.57
562 Tuition To Pennsylvania Charter Schools	1,681.71	334,659.74		336,341.45
567 Tuition To Approved Private Schools (APS) and PA Chartered Schools for the Deaf and Blind	110.79	166,363.79		166,474.58
568 Tuition To Private Residential Rehabilitative Institutions (PRRI) [In-State] and Detention Centers	281.97	140,342.86		140,624.83
580 Travel	1,598.88	4,441.36		6,040.24
594 IU Payment By Withholding for Institutionalized Children’s Programs – Special Classes	2,011.84			2,011.84
Total Other Purchased Services	\$9,351.34	\$894,059.17		\$903,410.51
600 Supplies				
610 General Supplies	15,570.77	45,702.68	3,529.06	64,802.51
640 Books and Periodicals	2.77	738.57		741.34
650 Supplies & Fees – Technology Related	62.98	12,533.59		12,596.57
Total Supplies	\$15,636.52	\$58,974.84	\$3,529.06	\$78,140.42
800 Other Objects				
810 Dues and Fees	161.71	7,148.29		7,310.00
Total Other Objects	\$161.71	\$7,148.29		\$7,310.00
Total 1200 Special Programs – Elementary / Secondary	\$3,411,161.81	\$4,692,593.08	\$421,566.10	\$8,525,320.99

LEA : 113362403 Elizabethtown Area SD

Printed 12/5/2019 8:25:17 AM

General Fund (10)				
1220 Sensory Support	<u>Elementary</u>	<u>Secondary</u>	<u>Federal</u>	<u>Total</u>
100 <u>Personnel Services – Salaries</u>				
100 Personnel Services – Salaries	258,941.64	97,957.26		356,898.90
Total Personnel Services – Salaries	\$258,941.64	\$97,957.26		\$356,898.90
200 <u>Personnel Services – Employee Benefits</u>				
210 Group Insurance – Contracted Provider	3,140.82	1,249.75		4,390.57
220 Social Security Contributions	19,631.77	7,461.72		27,093.49
230 PSERS Retirement Contributions	86,564.26	32,746.98		119,311.24
260 Workers' Compensation	2,314.76	875.67		3,190.43
270 Group Insurance – Self-Insurance	34,444.11	17,735.49		52,179.60
Total Personnel Services – Employee Benefits	\$146,095.72	\$60,069.61		\$206,165.33
500 <u>Other Purchased Services</u>				
580 Travel	642.11	191.72		833.83
Total Other Purchased Services	\$642.11	\$191.72		\$833.83
600 <u>Supplies</u>				
610 General Supplies	14.00	2,786.48		2,800.48
Total Supplies	\$14.00	\$2,786.48		\$2,800.48
Total 1220 Sensory Support	\$405,693.47	\$161,005.07		\$566,698.54

LEA : 113362403 Elizabethtown Area SD

Printed 12/5/2019 8:25:17 AM

General Fund (10)				
1230 Emotional Support	<u>Elementary</u>	<u>Secondary</u>	<u>Federal</u>	<u>Total</u>
100 <u>Personnel Services – Salaries</u>				
100 Personnel Services – Salaries	413,590.62	434,311.92	63,962.00	911,864.54
Total Personnel Services – Salaries	\$413,590.62	\$434,311.92	\$63,962.00	\$911,864.54
200 <u>Personnel Services – Employee Benefits</u>				
210 Group Insurance – Contracted Provider	15,384.26	5,397.67	1,135.22	21,917.15
220 Social Security Contributions	29,685.83	32,582.44	4,787.71	67,055.98
230 PSERS Retirement Contributions	137,262.41	144,857.36	21,382.39	303,502.16
260 Workers' Compensation	2,598.92	2,881.24		5,480.16
270 Group Insurance – Self-Insurance	171,854.57	77,276.96	16,839.84	265,971.37
Total Personnel Services – Employee Benefits	\$356,785.99	\$262,995.67	\$44,145.16	\$663,926.82
500 <u>Other Purchased Services</u>				
580 Travel	935.42			935.42
Total Other Purchased Services	\$935.42			\$935.42
600 <u>Supplies</u>				
610 General Supplies	12,438.30	35,470.23	250.00	48,158.53
650 Supplies & Fees – Technology Related	23.40	4,657.47		4,680.87
Total Supplies	\$12,461.70	\$40,127.70	\$250.00	\$52,839.40
Total 1230 Emotional Support	\$783,773.73	\$737,435.29	\$108,357.16	\$1,629,566.18

LEA : 113362403 Elizabethtown Area SD

Printed 12/5/2019 8:25:17 AM

General Fund (10)

1240 Academic Support

	Elementary	Secondary	Federal	Total
100 <u>Personnel Services – Salaries</u>				
100 Personnel Services – Salaries	797,791.82	1,173,254.27	75,718.73	2,046,764.82
Total Personnel Services – Salaries	\$797,791.82	\$1,173,254.27	\$75,718.73	\$2,046,764.82
200 <u>Personnel Services – Employee Benefits</u>				
210 Group Insurance – Contracted Provider	12,885.07	20,624.01	1,157.66	34,666.74
220 Social Security Contributions	59,891.62	87,405.61	5,876.15	153,173.38
230 PSERS Retirement Contributions	262,745.95	391,022.93	26,011.50	679,780.38
260 Workers' Compensation	5,624.41	9,538.40		15,162.81
270 Group Insurance – Self-Insurance	197,526.59	233,224.50	16,839.84	447,590.93
291 Other Retirement Plans		7,837.00		7,837.00
Total Personnel Services – Employee Benefits	\$538,673.64	\$749,652.45	\$49,885.15	\$1,338,211.24
300 <u>Purchased Professional and Technical Services</u>				
329 Professional Educational Services – Other	77.32	15,387.30		15,464.62
330 Other Professional Services	5.46	1,086.21		1,091.67
340 Technical Services		495.00		495.00
Total Purchased Professional and Technical Services	\$82.78	\$16,968.51		\$17,051.29
500 <u>Other Purchased Services</u>				
561 Tuition To Other School Districts Within the State	3,666.15	248,251.42		251,917.57
567 Tuition To Approved Private Schools (APS) and PA Chartered Schools for the Deaf and Blind	4.95	145,301.65		145,306.60
568 Tuition To Private Residential Rehabilitative Institutions (PRRI) [In-State] and Detention Centers	281.97	140,342.86		140,624.83
580 Travel	21.35	4,249.64		4,270.99
Total Other Purchased Services	\$3,974.42	\$538,145.57		\$542,119.99
600 <u>Supplies</u>				
610 General Supplies	3,118.47	7,445.97	3,279.06	13,843.50
640 Books and Periodicals	2.77	738.57		741.34
650 Supplies & Fees – Technology Related	39.58	7,876.12		7,915.70
Total Supplies	\$3,160.82	\$16,060.66	\$3,279.06	\$22,500.54
800 <u>Other Objects</u>				
810 Dues and Fees	140.92	3,011.08		3,152.00
Total Other Objects	\$140.92	\$3,011.08		\$3,152.00
Total 1240 Academic Support	\$1,343,824.40	\$2,497,092.54	\$128,882.94	\$3,969,799.88

LEA : 113362403 Elizabethtown Area SD

Printed 12/5/2019 8:25:17 AM

General Fund (10)

1241 Learning Support – Public	Elementary	Secondary	Federal	Total
100 <u>Personnel Services – Salaries</u>				
100 Personnel Services – Salaries	757,119.16	1,003,741.93	75,718.73	1,836,579.82
Total Personnel Services – Salaries	\$757,119.16	\$1,003,741.93	\$75,718.73	\$1,836,579.82
200 <u>Personnel Services – Employee Benefits</u>				
210 Group Insurance – Contracted Provider	11,878.26	18,298.05	1,157.66	31,333.97
220 Social Security Contributions	56,793.31	74,806.52	5,876.15	137,475.98
230 PSERS Retirement Contributions	249,149.04	334,354.73	26,011.50	609,515.27
260 Workers' Compensation	5,260.69	7,996.39		13,257.08
270 Group Insurance – Self-Insurance	197,471.02	207,403.63	16,839.84	421,714.49
291 Other Retirement Plans		7,837.00		7,837.00
Total Personnel Services – Employee Benefits	\$520,552.32	\$650,696.32	\$49,885.15	\$1,221,133.79
300 <u>Purchased Professional and Technical Services</u>				
329 Professional Educational Services – Other	77.32	15,387.30		15,464.62
330 Other Professional Services	5.46	1,086.21		1,091.67
340 Technical Services		495.00		495.00
Total Purchased Professional and Technical Services	\$82.78	\$16,968.51		\$17,051.29
500 <u>Other Purchased Services</u>				
561 Tuition To Other School Districts Within the State	3,666.15	248,251.42		251,917.57
567 Tuition To Approved Private Schools (APS) and PA Chartered Schools for the Deaf and Blind	4.95	145,301.65		145,306.60
568 Tuition To Private Residential Rehabilitative Institutions (PRRI) [In-State] and Detention Centers	281.97	140,342.86		140,624.83
580 Travel	18.56	3,694.20		3,712.76
Total Other Purchased Services	\$3,971.63	\$537,590.13		\$541,561.76
600 <u>Supplies</u>				
610 General Supplies	1,819.62	7,375.28	3,279.06	12,473.96
640 Books and Periodicals	2.77	738.57		741.34
650 Supplies & Fees – Technology Related	39.58	7,876.12		7,915.70
Total Supplies	\$1,861.97	\$15,989.97	\$3,279.06	\$21,131.00
Total 1241 Learning Support – Public	\$1,283,587.86	\$2,224,986.86	\$128,882.94	\$3,637,457.66

LEA : 113362403 Elizabethtown Area SD

Printed 12/5/2019 8:25:17 AM

General Fund (10)				
1243 Gifted Support				
	<u>Elementary</u>	<u>Secondary</u>	<u>Federal</u>	<u>Total</u>
100 <u>Personnel Services – Salaries</u>				
100 Personnel Services – Salaries	40,672.66	169,512.34		210,185.00
Total Personnel Services – Salaries	\$40,672.66	\$169,512.34		\$210,185.00
200 <u>Personnel Services – Employee Benefits</u>				
210 Group Insurance – Contracted Provider	1,006.81	2,325.96		3,332.77
220 Social Security Contributions	3,098.31	12,599.09		15,697.40
230 PSERS Retirement Contributions	13,596.91	56,668.20		70,265.11
260 Workers' Compensation	363.72	1,542.01		1,905.73
270 Group Insurance – Self-Insurance	55.57	25,820.87		25,876.44
Total Personnel Services – Employee Benefits	\$18,121.32	\$98,956.13		\$117,077.45
500 <u>Other Purchased Services</u>				
580 Travel	2.79	555.44		558.23
Total Other Purchased Services	\$2.79	\$555.44		\$558.23
600 <u>Supplies</u>				
610 General Supplies	1,298.85	70.69		1,369.54
Total Supplies	\$1,298.85	\$70.69		\$1,369.54
800 <u>Other Objects</u>				
810 Dues and Fees	140.92	3,011.08		3,152.00
Total Other Objects	\$140.92	\$3,011.08		\$3,152.00
Total 1243 Gifted Support	\$60,236.54	\$272,105.68		\$332,342.22

LEA : 113362403 Elizabethtown Area SD

Printed 12/5/2019 8:25:17 AM

General Fund (10)				
1290 Special Programs - Other Support	<u>Elementary</u>	<u>Secondary</u>	<u>Federal</u>	<u>Total</u>
300 <u>Purchased Professional and Technical Services</u>				
322 Professional Educational Services – Ius	874,032.55	933,723.57		1,807,756.12
329 Professional Educational Services – Other			184,326.00	184,326.00
Total Purchased Professional and Technical Services	\$874,032.55	\$933,723.57	\$184,326.00	\$1,992,082.12
400 <u>Purchased Property Services</u>				
440 Rentals	17.48	3,477.52		3,495.00
Total Purchased Property Services	\$17.48	\$3,477.52		\$3,495.00
500 <u>Other Purchased Services</u>				
562 Tuition To Pennsylvania Charter Schools	1,681.71	334,659.74		336,341.45
567 Tuition To Approved Private Schools (APS) and PA Chartered Schools for the Deaf and Blind	105.84	21,062.14		21,167.98
594 IU Payment By Withholding for Institutionalized Children's Programs – Special Classes	2,011.84			2,011.84
Total Other Purchased Services	\$3,799.39	\$355,721.88		\$359,521.27
800 <u>Other Objects</u>				
810 Dues and Fees	20.79	4,137.21		4,158.00
Total Other Objects	\$20.79	\$4,137.21		\$4,158.00
Total 1290 Special Programs - Other Support	\$877,870.21	\$1,297,060.18	\$184,326.00	\$2,359,256.39

LEA : 113362403 Elizabethtown Area SD

Printed 12/5/2019 8:25:17 AM

General Fund (10)

1300 Vocational Education

	Elementary	Secondary	Federal	Total
100 <u>Personnel Services – Salaries</u>				
100 Personnel Services – Salaries		620,811.55		620,811.55
Total Personnel Services – Salaries		\$620,811.55		\$620,811.55
200 <u>Personnel Services – Employee Benefits</u>				
210 Group Insurance – Contracted Provider		12,290.13		12,290.13
220 Social Security Contributions		45,759.00		45,759.00
230 PSERS Retirement Contributions		207,537.15		207,537.15
260 Workers' Compensation		5,583.02		5,583.02
270 Group Insurance – Self-Insurance		144,814.61		144,814.61
Total Personnel Services – Employee Benefits		\$415,983.91		\$415,983.91
400 <u>Purchased Property Services</u>				
440 Rentals		66,921.28		66,921.28
Total Purchased Property Services		\$66,921.28		\$66,921.28
500 <u>Other Purchased Services</u>				
564 Tuition To Career and Technology Centers		900,357.89		900,357.89
Total Other Purchased Services		\$900,357.89		\$900,357.89
600 <u>Supplies</u>				
610 General Supplies		35,902.63		35,902.63
Total Supplies		\$35,902.63		\$35,902.63
800 <u>Other Objects</u>				
810 Dues and Fees		40.00		40.00
Total Other Objects		\$40.00		\$40.00
Total 1300 Vocational Education		\$2,040,017.26		\$2,040,017.26

LEA : 113362403 Elizabethtown Area SD

Printed 12/5/2019 8:25:17 AM

General Fund (10)

1400 Other Instructional Programs – Elementary / Secondary	<u>Elementary</u>	<u>Secondary</u>	<u>Federal</u>	<u>Total</u>
100 <u>Personnel Services – Salaries</u>				
100 Personnel Services – Salaries	3,534.86	87,108.85		90,643.71
Total Personnel Services – Salaries	\$3,534.86	\$87,108.85		\$90,643.71
200 <u>Personnel Services – Employee Benefits</u>				
210 Group Insurance – Contracted Provider	1.04	949.72		950.76
220 Social Security Contributions	263.75	6,538.44		6,802.19
230 PSERS Retirement Contributions	1,181.69	28,990.72		30,172.41
260 Workers' Compensation	0.94	569.04		569.98
270 Group Insurance – Self-Insurance	11.15	13,508.05		13,519.20
Total Personnel Services – Employee Benefits	\$1,458.57	\$50,555.97		\$52,014.54
300 <u>Purchased Professional and Technical Services</u>				
323 Professional Educational Services – Other Educational Agencies		42,030.00		42,030.00
329 Professional Educational Services – Other	541.04	3,545.74		4,086.78
330 Other Professional Services		11,278.81		11,278.81
Total Purchased Professional and Technical Services	\$541.04	\$56,854.55		\$57,395.59
500 <u>Other Purchased Services</u>				
567 Tuition To Approved Private Schools (APS) and PA Chartered Schools for the Deaf and Blind		80,852.40		80,852.40
Total Other Purchased Services		\$80,852.40		\$80,852.40
600 <u>Supplies</u>				
610 General Supplies		57.95		57.95
Total Supplies		\$57.95		\$57.95
Total 1400 Other Instructional Programs – Elementary / Secondary	\$5,534.47	\$275,429.72		\$280,964.19

LEA : 113362403 Elizabethtown Area SD

Printed 12/5/2019 8:25:17 AM

General Fund (10)

1430 Homebound Instruction	<u>Elementary</u>	<u>Secondary</u>	<u>Federal</u>	<u>Total</u>
100 <u>Personnel Services – Salaries</u>				
100 Personnel Services – Salaries	3,429.69	7,791.82		11,221.51
Total Personnel Services – Salaries	\$3,429.69	\$7,791.82		\$11,221.51
200 <u>Personnel Services – Employee Benefits</u>				
220 Social Security Contributions	255.79	571.38		827.17
230 PSERS Retirement Contributions	1,146.53	2,475.18		3,621.71
Total Personnel Services – Employee Benefits	\$1,402.32	\$3,046.56		\$4,448.88
300 <u>Purchased Professional and Technical Services</u>				
329 Professional Educational Services – Other	541.04	3,545.74		4,086.78
Total Purchased Professional and Technical Services	\$541.04	\$3,545.74		\$4,086.78
Total 1430 Homebound Instruction	\$5,373.05	\$14,384.12		\$19,757.17

LEA : 113362403 Elizabethtown Area SD

Printed 12/5/2019 8:25:17 AM

General Fund (10)				
1440 Alternative Regular Education Programs	<u>Elementary</u>	<u>Secondary</u>	<u>Federal</u>	<u>Total</u>
100 <u>Personnel Services – Salaries</u>				
100 Personnel Services – Salaries	105.17	79,317.03		79,422.20
Total Personnel Services – Salaries	\$105.17	\$79,317.03		\$79,422.20
200 <u>Personnel Services – Employee Benefits</u>				
210 Group Insurance – Contracted Provider	1.04	949.72		950.76
220 Social Security Contributions	7.96	5,967.06		5,975.02
230 PSERS Retirement Contributions	35.16	26,515.54		26,550.70
260 Workers' Compensation	0.94	569.04		569.98
270 Group Insurance – Self-Insurance	11.15	13,508.05		13,519.20
Total Personnel Services – Employee Benefits	\$56.25	\$47,509.41		\$47,565.66
300 <u>Purchased Professional and Technical Services</u>				
323 Professional Educational Services – Other Educational Agencies		42,030.00		42,030.00
330 Other Professional Services		11,278.81		11,278.81
Total Purchased Professional and Technical Services		\$53,308.81		\$53,308.81
500 <u>Other Purchased Services</u>				
567 Tuition To Approved Private Schools (APS) and PA Chartered Schools for the Deaf and Blind		80,852.40		80,852.40
Total Other Purchased Services		\$80,852.40		\$80,852.40
600 <u>Supplies</u>				
610 General Supplies		57.95		57.95
Total Supplies		\$57.95		\$57.95
Total 1440 Alternative Regular Education Programs	\$161.42	\$261,045.60		\$261,207.02

LEA : 113362403 Elizabethtown Area SD

Printed 12/5/2019 8:25:17 AM

General Fund (10)				
1442 Alternative Education Programs	<u>Elementary</u>	<u>Secondary</u>	<u>Federal</u>	<u>Total</u>
100 <u>Personnel Services – Salaries</u>				
100 Personnel Services – Salaries	105.17	79,317.03		79,422.20
Total Personnel Services – Salaries	\$105.17	\$79,317.03		\$79,422.20
200 <u>Personnel Services – Employee Benefits</u>				
210 Group Insurance – Contracted Provider	1.04	949.72		950.76
220 Social Security Contributions	7.96	5,967.06		5,975.02
230 PSERS Retirement Contributions	35.16	26,515.54		26,550.70
260 Workers' Compensation	0.94	569.04		569.98
270 Group Insurance – Self-Insurance	11.15	13,508.05		13,519.20
Total Personnel Services – Employee Benefits	\$56.25	\$47,509.41		\$47,565.66
300 <u>Purchased Professional and Technical Services</u>				
323 Professional Educational Services – Other Educational Agencies		42,030.00		42,030.00
330 Other Professional Services		11,278.81		11,278.81
Total Purchased Professional and Technical Services		\$53,308.81		\$53,308.81
500 <u>Other Purchased Services</u>				
567 Tuition To Approved Private Schools (APS) and PA Chartered Schools for the Deaf and Blind		80,852.40		80,852.40
Total Other Purchased Services		\$80,852.40		\$80,852.40
600 <u>Supplies</u>				
610 General Supplies		57.95		57.95
Total Supplies		\$57.95		\$57.95
Total 1442 Alternative Education Programs	\$161.42	\$261,045.60		\$261,207.02

LEA : 113362403 Elizabethtown Area SD

Printed 12/5/2019 8:25:17 AM

General Fund (10)

1500 Nonpublic School Programs

	<u>Elementary</u>	<u>Secondary</u>	<u>Federal</u>	<u>Total</u>
300 <u>Purchased Professional and Technical Services</u>				
322 Professional Educational Services – Ius			3,255.00	3,255.00
360 Employee Training and Development Services			13,282.91	13,282.91
Total Purchased Professional and Technical Services			\$16,537.91	\$16,537.91
600 <u>Supplies</u>				
610 General Supplies			5,721.94	5,721.94
Total Supplies			\$5,721.94	\$5,721.94
Total 1500 Nonpublic School Programs			\$22,259.85	\$22,259.85

LEA : 113362403 Elizabethtown Area SD

Printed 12/5/2019 8:25:26 AM

General Fund (10)

2000 Support Services

Total

100	<u>Personnel Services – Salaries</u>	
100	Personnel Services – Salaries	7,045,708.81
Total Personnel Services – Salaries		\$7,045,708.81
200	<u>Personnel Services – Employee Benefits</u>	
210	Group Insurance – Contracted Provider	126,842.33
220	Social Security Contributions	520,588.31
230	PSERS Retirement Contributions	2,327,712.80
240	Tuition Reimbursement	239,541.40
250	Unemployment Compensation	1,365.60
260	Workers' Compensation	52,825.72
270	Group Insurance – Self-Insurance	1,515,176.12
291	Other Retirement Plans	104,251.65
299	All Other Employee Benefits	11,479.39
Total Personnel Services – Employee Benefits		\$4,899,783.32
300	<u>Purchased Professional and Technical Services</u>	
310	Official / Administrative Services	93,305.84
329	Professional Educational Services – Other	98,175.80
330	Other Professional Services	179,631.95
340	Technical Services	7,086.50
350	Security / Safety Services	93,944.71
360	Employee Training and Development Services	156,852.60
Total Purchased Professional and Technical Services		\$628,997.40
400	<u>Purchased Property Services</u>	
410	Cleaning Services	211,221.26
420	Utility Services	72,656.21
430	Repairs and Maintenance Services	346,669.40
440	Rentals	151,254.94
460	Extermination Services	6,272.00
490	Other Purchased Property Services	3,245.50
Total Purchased Property Services		\$791,319.31
500	<u>Other Purchased Services</u>	
510	Student Transportation Services	601.00
513	Contracted Carriers	2,373,833.46
516	Student Transportation Services From the IU	158,329.02
520	Insurance – General	100.00
523	General Property and Liability Insurance	207,899.00
530	Communications	100,337.52
549	Other Advertising/Public Relations	9,009.50
550	Printing and Binding	25,162.49
580	Travel	34,136.40
595	IU Payments By Withholding	25,437.03
Total Other Purchased Services		\$2,934,845.42
600	<u>Supplies</u>	
610	General Supplies	451,237.09

LEA : 113362403 Elizabethtown Area SD

Printed 12/5/2019 8:25:26 AM

General Fund (10)

2000 Support Services

Total

600	<u>Supplies</u>	
620	Energy	740,034.88
630	Food	22,724.42
640	Books and Periodicals	67,832.01
650	Supplies & Fees – Technology Related	124,847.76
Total Supplies		\$1,406,676.16
800	<u>Other Objects</u>	
810	Dues and Fees	102,268.41
Total Other Objects		\$102,268.41
Total 2000 Support Services		\$17,809,598.83

LEA : 113362403 Elizabethtown Area SD

Printed 12/5/2019 8:25:26 AM

General Fund (10)				
2100 Support Services – Students	<u>Elementary</u>	<u>Secondary</u>	<u>Federal</u>	<u>Total</u>
100 <u>Personnel Services – Salaries</u>				
100 Personnel Services – Salaries	370,778.30	818,951.97		1,416,249.62
Total Personnel Services – Salaries	\$370,778.30	\$818,951.97		\$1,416,249.62
200 <u>Personnel Services – Employee Benefits</u>				
210 Group Insurance – Contracted Provider	4,850.10	12,762.03		21,288.09
220 Social Security Contributions	27,889.34	60,314.21		105,227.92
230 PSERS Retirement Contributions	123,950.31	271,771.28		471,112.71
260 Workers' Compensation	3,355.36	7,424.50		12,442.97
270 Group Insurance – Self-Insurance	50,477.73	143,224.89		238,984.36
Total Personnel Services – Employee Benefits	\$210,522.84	\$495,496.91		\$849,056.05
300 <u>Purchased Professional and Technical Services</u>				
330 Other Professional Services	161.25	6,666.75	16,020.00	22,848.00
Total Purchased Professional and Technical Services	\$161.25	\$6,666.75	\$16,020.00	\$22,848.00
500 <u>Other Purchased Services</u>				
510 Student Transportation Services			601.00	601.00
530 Communications				4,590.00
580 Travel	582.94	4,122.52		5,591.21
Total Other Purchased Services	\$582.94	\$4,122.52	\$601.00	\$10,782.21
600 <u>Supplies</u>				
610 General Supplies	742.29	17,825.63		20,712.96
640 Books and Periodicals	2.45	487.55		490.00
650 Supplies & Fees – Technology Related	21.42	4,262.58		4,284.00
Total Supplies	\$766.16	\$22,575.76		\$25,486.96
800 <u>Other Objects</u>				
810 Dues and Fees	4.45	885.55		890.00
Total Other Objects	\$4.45	\$885.55		\$890.00
Total 2100 Support Services – Students	\$582,815.94	\$1,348,699.46	\$16,621.00	\$2,325,312.84

LEA : 113362403 Elizabethtown Area SD

Printed 12/5/2019 8:25:26 AM

General Fund (10)				
2110 Supervision of Student Services	<u>Elementary</u>	<u>Secondary</u>	<u>Federal</u>	<u>Total</u>
300 <u>Purchased Professional and Technical Services</u>				
330 Other Professional Services		2,438.00		2,438.00
Total Purchased Professional and Technical Services		\$2,438.00		\$2,438.00
500 <u>Other Purchased Services</u>				
510 Student Transportation Services			601.00	601.00
580 Travel	11.53	2,293.99		2,305.52
Total Other Purchased Services	\$11.53	\$2,293.99	\$601.00	\$2,906.52
600 <u>Supplies</u>				
610 General Supplies	0.70	140.24		140.94
640 Books and Periodicals	2.45	487.55		490.00
Total Supplies	\$3.15	\$627.79		\$630.94
800 <u>Other Objects</u>				
810 Dues and Fees	4.45	885.55		890.00
Total Other Objects	\$4.45	\$885.55		\$890.00
Total 2110 Supervision of Student Services	\$19.13	\$6,245.33	\$601.00	\$6,865.46

LEA : 113362403 Elizabethtown Area SD

Printed 12/5/2019 8:25:26 AM

General Fund (10)				
2111 Supervision of Student Services – Head of Component	<u>Elementary</u>	<u>Secondary</u>	<u>Federal</u>	<u>Total</u>
300 <u>Purchased Professional and Technical Services</u>				
330 Other Professional Services		2,438.00		2,438.00
Total Purchased Professional and Technical Services		\$2,438.00		\$2,438.00
500 <u>Other Purchased Services</u>				
510 Student Transportation Services			601.00	601.00
580 Travel	11.53	2,293.99		2,305.52
Total Other Purchased Services	\$11.53	\$2,293.99	\$601.00	\$2,906.52
600 <u>Supplies</u>				
610 General Supplies	0.70	140.24		140.94
640 Books and Periodicals	2.45	487.55		490.00
Total Supplies	\$3.15	\$627.79		\$630.94
800 <u>Other Objects</u>				
810 Dues and Fees	4.45	885.55		890.00
Total Other Objects	\$4.45	\$885.55		\$890.00
Total 2111 Supervision of Student Services – Head of Component	\$19.13	\$6,245.33	\$601.00	\$6,865.46

LEA : 113362403 Elizabethtown Area SD

Printed 12/5/2019 8:25:26 AM

General Fund (10)				
2120 Guidance Services	<u>Elementary</u>	<u>Secondary</u>	<u>Federal</u>	<u>Total</u>
100 <u>Personnel Services – Salaries</u>				
100 Personnel Services – Salaries	369,220.00	508,850.01		878,070.01
Total Personnel Services – Salaries	\$369,220.00	\$508,850.01		\$878,070.01
200 <u>Personnel Services – Employee Benefits</u>				
210 Group Insurance – Contracted Provider	4,827.61	8,287.18		13,114.79
220 Social Security Contributions	27,774.32	37,426.05		65,200.37
230 PSERS Retirement Contributions	123,429.37	168,104.06		291,533.43
260 Workers' Compensation	3,341.33	4,632.04		7,973.37
270 Group Insurance – Self-Insurance	50,150.53	78,111.39		128,261.92
Total Personnel Services – Employee Benefits	\$209,523.16	\$296,560.72		\$506,083.88
300 <u>Purchased Professional and Technical Services</u>				
330 Other Professional Services	0.25	49.75		50.00
Total Purchased Professional and Technical Services	\$0.25	\$49.75		\$50.00
500 <u>Other Purchased Services</u>				
580 Travel	562.22			562.22
Total Other Purchased Services	\$562.22			\$562.22
600 <u>Supplies</u>				
610 General Supplies	693.81	8,176.93		8,870.74
650 Supplies & Fees – Technology Related	21.42	4,262.58		4,284.00
Total Supplies	\$715.23	\$12,439.51		\$13,154.74
Total 2120 Guidance Services	\$580,020.86	\$817,899.99		\$1,397,920.85

LEA : 113362403 Elizabethtown Area SD

Printed 12/5/2019 8:25:26 AM

General Fund (10)

2130 Attendance Services

Elementary Secondary Federal Total

100 <u>Personnel Services – Salaries</u>				
100 Personnel Services – Salaries				22,345.64
Total Personnel Services – Salaries				\$22,345.64
200 <u>Personnel Services – Employee Benefits</u>				
210 Group Insurance – Contracted Provider				261.87
220 Social Security Contributions				1,709.42
230 PSERS Retirement Contributions				7,470.13
260 Workers' Compensation				199.82
Total Personnel Services – Employee Benefits				\$9,641.24
Total 2130 Attendance Services				\$31,986.88

LEA : 113362403 Elizabethtown Area SD

Printed 12/5/2019 8:25:26 AM

General Fund (10)

2140 Psychological Services	Elementary	Secondary	Federal	Total
100 <u>Personnel Services – Salaries</u>				
100 Personnel Services – Salaries	1,558.30	310,101.96		311,660.26
Total Personnel Services – Salaries	\$1,558.30	\$310,101.96		\$311,660.26
200 <u>Personnel Services – Employee Benefits</u>				
210 Group Insurance – Contracted Provider	22.49	4,474.85		4,497.34
220 Social Security Contributions	115.02	22,888.16		23,003.18
230 PSERS Retirement Contributions	520.94	103,667.22		104,188.16
260 Workers' Compensation	14.03	2,792.46		2,806.49
270 Group Insurance – Self-Insurance	327.20	65,113.50		65,440.70
Total Personnel Services – Employee Benefits	\$999.68	\$198,936.19		\$199,935.87
300 <u>Purchased Professional and Technical Services</u>				
330 Other Professional Services	161.00	4,179.00	16,020.00	20,360.00
Total Purchased Professional and Technical Services	\$161.00	\$4,179.00	\$16,020.00	\$20,360.00
500 <u>Other Purchased Services</u>				
580 Travel	9.19	1,828.53		1,837.72
Total Other Purchased Services	\$9.19	\$1,828.53		\$1,837.72
600 <u>Supplies</u>				
610 General Supplies	47.78	9,508.46		9,556.24
Total Supplies	\$47.78	\$9,508.46		\$9,556.24
Total 2140 Psychological Services	\$2,775.95	\$524,554.14	\$16,020.00	\$543,350.09

LEA : 113362403 Elizabethtown Area SD

Printed 12/5/2019 8:25:26 AM

General Fund (10)

2160 Social Work Services

Elementary Secondary Federal Total

100 <u>Personnel Services – Salaries</u>				
100 Personnel Services – Salaries				88,585.46
Total Personnel Services – Salaries				\$88,585.46
200 <u>Personnel Services – Employee Benefits</u>				
210 Group Insurance – Contracted Provider				1,272.38
220 Social Security Contributions				6,671.54
230 PSERS Retirement Contributions				29,614.10
260 Workers' Compensation				792.18
270 Group Insurance – Self-Insurance				16,839.84
Total Personnel Services – Employee Benefits				\$55,190.04
500 <u>Other Purchased Services</u>				
580 Travel				885.75
Total Other Purchased Services				\$885.75
600 <u>Supplies</u>				
610 General Supplies				2,145.04
Total Supplies				\$2,145.04
Total 2160 Social Work Services				\$146,806.29

LEA : 113362403 Elizabethtown Area SD

Printed 12/5/2019 8:25:26 AM

General Fund (10)				
2170 Student Accounting Services	<u>Elementary</u>	<u>Secondary</u>	<u>Federal</u>	<u>Total</u>
100 <u>Personnel Services – Salaries</u>				
100 Personnel Services – Salaries				115,588.25
Total Personnel Services – Salaries				\$115,588.25
200 <u>Personnel Services – Employee Benefits</u>				
210 Group Insurance – Contracted Provider				2,141.71
220 Social Security Contributions				8,643.41
230 PSERS Retirement Contributions				38,306.89
260 Workers' Compensation				671.11
270 Group Insurance – Self-Insurance				28,441.90
Total Personnel Services – Employee Benefits				\$78,205.02
500 <u>Other Purchased Services</u>				
530 Communications				4,590.00
Total Other Purchased Services				\$4,590.00
Total 2170 Student Accounting Services				\$198,383.27

LEA : 113362403 Elizabethtown Area SD

Printed 12/5/2019 8:25:26 AM

General Fund (10)

2200 Support Services – Instructional Staff	Elementary	Secondary	Federal	Total
100 <u>Personnel Services – Salaries</u>				
100 Personnel Services – Salaries	185,861.26	100,548.28		286,409.54
Total Personnel Services – Salaries	\$185,861.26	\$100,548.28		\$286,409.54
200 <u>Personnel Services – Employee Benefits</u>				
210 Group Insurance – Contracted Provider	2,514.61	765.86		3,280.47
220 Social Security Contributions	13,741.88	7,569.70		21,311.58
230 PSERS Retirement Contributions	62,133.44	33,613.34		95,746.78
240 Tuition Reimbursement	111,465.99	112,512.01		223,978.00
260 Workers' Compensation	1,356.64	993.85		2,350.49
270 Group Insurance – Self-Insurance	30,144.15	16,817.61		46,961.76
Total Personnel Services – Employee Benefits	\$221,356.71	\$172,272.37		\$393,629.08
300 <u>Purchased Professional and Technical Services</u>				
329 Professional Educational Services – Other	25,517.30	65,771.00	6,887.50	98,175.80
330 Other Professional Services	15.07	2,999.69		3,014.76
360 Employee Training and Development Services	115,108.28	18,279.93		133,388.21
Total Purchased Professional and Technical Services	\$140,640.65	\$87,050.62	\$6,887.50	\$234,578.77
500 <u>Other Purchased Services</u>				
580 Travel	5.34	5,065.41		5,070.75
Total Other Purchased Services	\$5.34	\$5,065.41		\$5,070.75
600 <u>Supplies</u>				
610 General Supplies	1,165.04	5,631.21		6,796.25
630 Food	18.38	3,658.32		3,676.70
640 Books and Periodicals	48,399.80	9,954.97	6,341.25	64,696.02
650 Supplies & Fees – Technology Related	388.45	14,574.62		14,963.07
Total Supplies	\$49,971.67	\$33,819.12	\$6,341.25	\$90,132.04
800 <u>Other Objects</u>				
810 Dues and Fees	3.00	597.00		600.00
Total Other Objects	\$3.00	\$597.00		\$600.00
Total 2200 Support Services – Instructional Staff	\$597,838.63	\$399,352.80	\$13,228.75	\$1,010,420.18

LEA : 113362403 Elizabethtown Area SD

Printed 12/5/2019 8:25:26 AM

General Fund (10)

2220 Technology Support Services

	<u>Elementary</u>	<u>Secondary</u>	<u>Federal</u>	<u>Total</u>
600 <u>Supplies</u>				
640 Books and Periodicals			6,341.25	6,341.25
Total Supplies			\$6,341.25	\$6,341.25
Total 2220 Technology Support Services			\$6,341.25	\$6,341.25

LEA : 113362403 Elizabethtown Area SD

Printed 12/5/2019 8:25:26 AM

General Fund (10)				
2250 School Library Services	<u>Elementary</u>	<u>Secondary</u>	<u>Federal</u>	<u>Total</u>
100 <u>Personnel Services – Salaries</u>				
100 Personnel Services – Salaries	183,024.34	81,055.92		264,080.26
Total Personnel Services – Salaries	\$183,024.34	\$81,055.92		\$264,080.26
200 <u>Personnel Services – Employee Benefits</u>				
210 Group Insurance – Contracted Provider	2,514.61	765.86		3,280.47
220 Social Security Contributions	13,533.34	6,122.00		19,655.34
230 PSERS Retirement Contributions	61,185.10	27,097.07		88,282.17
260 Workers' Compensation	1,356.64	993.85		2,350.49
270 Group Insurance – Self-Insurance	30,144.15	16,817.61		46,961.76
Total Personnel Services – Employee Benefits	\$108,733.84	\$51,796.39		\$160,530.23
600 <u>Supplies</u>				
610 General Supplies	1,163.09	5,244.17		6,407.26
640 Books and Periodicals	48,396.42	9,281.94		57,678.36
650 Supplies & Fees – Technology Related	388.45	14,574.62		14,963.07
Total Supplies	\$49,947.96	\$29,100.73		\$79,048.69
Total 2250 School Library Services	\$341,706.14	\$161,953.04		\$503,659.18

LEA : 113362403 Elizabethtown Area SD

Printed 12/5/2019 8:25:26 AM

General Fund (10)

2260 Instruction and Curriculum Development Services	<u>Elementary</u>	<u>Secondary</u>	<u>Federal</u>	<u>Total</u>
100 <u>Personnel Services – Salaries</u>				
100 Personnel Services – Salaries	2,742.84	769.41		3,512.25
Total Personnel Services – Salaries	\$2,742.84	\$769.41		\$3,512.25
200 <u>Personnel Services – Employee Benefits</u>				
220 Social Security Contributions	201.55	57.97		259.52
230 PSERS Retirement Contributions	916.89	257.22		1,174.11
Total Personnel Services – Employee Benefits	\$1,118.44	\$315.19		\$1,433.63
Total 2260 Instruction and Curriculum Development Services	\$3,861.28	\$1,084.60		\$4,945.88

LEA : 113362403 Elizabethtown Area SD

Printed 12/5/2019 8:25:26 AM

General Fund (10)

2270 Instructional Staff Professional Development Services	Elementary	Secondary	Federal	Total
100 Personnel Services – Salaries				
100 Personnel Services – Salaries	94.08	18,722.95		18,817.03
Total Personnel Services – Salaries	\$94.08	\$18,722.95		\$18,817.03
200 Personnel Services – Employee Benefits				
220 Social Security Contributions	6.99	1,389.73		1,396.72
230 PSERS Retirement Contributions	31.45	6,259.05		6,290.50
240 Tuition Reimbursement	111,465.99	112,512.01		223,978.00
Total Personnel Services – Employee Benefits	\$111,504.43	\$120,160.79		\$231,665.22
300 Purchased Professional and Technical Services				
329 Professional Educational Services – Other	25,517.30	65,771.00	6,887.50	98,175.80
330 Other Professional Services	15.07	2,999.69		3,014.76
360 Employee Training and Development Services	115,108.28	18,279.93		133,388.21
Total Purchased Professional and Technical Services	\$140,640.65	\$87,050.62	\$6,887.50	\$234,578.77
500 Other Purchased Services				
580 Travel	5.34	5,065.41		5,070.75
Total Other Purchased Services	\$5.34	\$5,065.41		\$5,070.75
600 Supplies				
610 General Supplies	1.95	387.04		388.99
630 Food	18.38	3,658.32		3,676.70
640 Books and Periodicals	3.38	673.03		676.41
Total Supplies	\$23.71	\$4,718.39		\$4,742.10
800 Other Objects				
810 Dues and Fees	3.00	597.00		600.00
Total Other Objects	\$3.00	\$597.00		\$600.00
Total 2270 Instructional Staff Professional Development Services	\$252,271.21	\$236,315.16	\$6,887.50	\$495,473.87

LEA : 113362403 Elizabethtown Area SD

Printed 12/5/2019 8:25:26 AM

General Fund (10)

2300 Support Services – Administration	Elementary	Secondary	Federal	Total
100 <u>Personnel Services – Salaries</u>				
100 Personnel Services – Salaries	828,212.41	734,549.69		2,111,996.98
Total Personnel Services – Salaries	\$828,212.41	\$734,549.69		\$2,111,996.98
200 <u>Personnel Services – Employee Benefits</u>				
210 Group Insurance – Contracted Provider	13,217.63	13,168.15		33,035.21
220 Social Security Contributions	61,851.79	54,988.49		154,967.83
230 PSERS Retirement Contributions	275,018.98	241,069.97		698,528.03
260 Workers' Compensation	5,588.89	5,453.75		15,025.25
270 Group Insurance – Self-Insurance	173,323.88	126,978.16		364,059.60
291 Other Retirement Plans	22,149.18	17,049.81		75,507.21
Total Personnel Services – Employee Benefits	\$551,150.35	\$458,708.33		\$1,341,123.13
300 <u>Purchased Professional and Technical Services</u>				
310 Official / Administrative Services				93,305.84
330 Other Professional Services		389.00		68,192.57
Total Purchased Professional and Technical Services		\$389.00		\$161,498.41
500 <u>Other Purchased Services</u>				
520 Insurance – General				100.00
530 Communications	5,241.54	10,692.80		84,711.87
550 Printing and Binding				14,313.15
580 Travel	1,111.31	12.00		9,977.02
Total Other Purchased Services	\$6,352.85	\$10,704.80		\$109,102.04
600 <u>Supplies</u>				
610 General Supplies	9,215.40	5,734.59		45,170.00
630 Food	1,817.48	3,151.81		10,863.38
640 Books and Periodicals	993.21	258.02		2,109.27
Total Supplies	\$12,026.09	\$9,144.42		\$58,142.65
800 <u>Other Objects</u>				
810 Dues and Fees	118.55	4,352.44		34,561.36
Total Other Objects	\$118.55	\$4,352.44		\$34,561.36
Total 2300 Support Services – Administration	\$1,397,860.25	\$1,217,848.68		\$3,816,424.57

LEA : 113362403 Elizabethtown Area SD

Printed 12/5/2019 8:25:26 AM

General Fund (10)				
2310 Board Services				
	<u>Elementary</u>	<u>Secondary</u>	<u>Federal</u>	<u>Total</u>
100 <u>Personnel Services – Salaries</u>				
100 Personnel Services – Salaries				3,399.80
Total Personnel Services – Salaries				\$3,399.80
200 <u>Personnel Services – Employee Benefits</u>				
220 Social Security Contributions				249.24
230 PSERS Retirement Contributions				802.35
Total Personnel Services – Employee Benefits				\$1,051.59
300 <u>Purchased Professional and Technical Services</u>				
330 Other Professional Services				31,792.00
Total Purchased Professional and Technical Services				\$31,792.00
500 <u>Other Purchased Services</u>				
520 Insurance – General				100.00
580 Travel				6,186.81
Total Other Purchased Services				\$6,286.81
600 <u>Supplies</u>				
610 General Supplies				144.98
630 Food				2,165.74
640 Books and Periodicals				202.14
Total Supplies				\$2,512.86
800 <u>Other Objects</u>				
810 Dues and Fees				25,831.48
Total Other Objects				\$25,831.48
Total 2310 Board Services				\$70,874.54

LEA : 113362403 Elizabethtown Area SD

Printed 12/5/2019 8:25:26 AM

General Fund (10)

2330 Tax Assessment and Collection Services	<u>Elementary</u>	<u>Secondary</u>	<u>Federal</u>	<u>Total</u>
300 <u>Purchased Professional and Technical Services</u>				
310 Official / Administrative Services				93,305.84
Total Purchased Professional and Technical Services				\$93,305.84
500 <u>Other Purchased Services</u>				
530 Communications				3,999.00
550 Printing and Binding				14,313.15
Total Other Purchased Services				\$18,312.15
Total 2330 Tax Assessment and Collection Services				\$111,617.99

LEA : 113362403 Elizabethtown Area SD

Printed 12/5/2019 8:25:26 AM

General Fund (10)

2350 Legal and Accounting Services	<u>Elementary</u>	<u>Secondary</u>	<u>Federal</u>	<u>Total</u>
300 <u>Purchased Professional and Technical Services</u>				
330 Other Professional Services				27,133.55
Total Purchased Professional and Technical Services				\$27,133.55
Total 2350 Legal and Accounting Services				\$27,133.55

LEA : 113362403 Elizabethtown Area SD

Printed 12/5/2019 8:25:26 AM

General Fund (10)				
2360 Office of the Superintendent / Executive Director Services	<u>Elementary</u>	<u>Secondary</u>	<u>Federal</u>	<u>Total</u>
100 <u>Personnel Services – Salaries</u>				
100 Personnel Services – Salaries				545,835.08
Total Personnel Services – Salaries				\$545,835.08
200 <u>Personnel Services – Employee Benefits</u>				
210 Group Insurance – Contracted Provider				6,649.43
220 Social Security Contributions				37,878.31
230 PSERS Retirement Contributions				181,636.73
260 Workers' Compensation				3,982.61
270 Group Insurance – Self-Insurance				63,757.56
291 Other Retirement Plans				36,308.22
Total Personnel Services – Employee Benefits				\$330,212.86
300 <u>Purchased Professional and Technical Services</u>				
330 Other Professional Services				8,878.02
Total Purchased Professional and Technical Services				\$8,878.02
500 <u>Other Purchased Services</u>				
580 Travel				2,666.90
Total Other Purchased Services				\$2,666.90
600 <u>Supplies</u>				
610 General Supplies				663.28
630 Food				3,728.35
640 Books and Periodicals				655.90
Total Supplies				\$5,047.53
800 <u>Other Objects</u>				
810 Dues and Fees				3,758.89
Total Other Objects				\$3,758.89
Total 2360 Office of the Superintendent / Executive Director Services				\$896,399.28

LEA : 113362403 Elizabethtown Area SD

Printed 12/5/2019 8:25:26 AM

General Fund (10)				
2380 Office of the Principal Services	<u>Elementary</u>	<u>Secondary</u>	<u>Federal</u>	<u>Total</u>
100 <u>Personnel Services – Salaries</u>				
100 Personnel Services – Salaries	828,212.41	734,549.69		1,562,762.10
Total Personnel Services – Salaries	\$828,212.41	\$734,549.69		\$1,562,762.10
200 <u>Personnel Services – Employee Benefits</u>				
210 Group Insurance – Contracted Provider	13,217.63	13,168.15		26,385.78
220 Social Security Contributions	61,851.79	54,988.49		116,840.28
230 PSERS Retirement Contributions	275,018.98	241,069.97		516,088.95
260 Workers' Compensation	5,588.89	5,453.75		11,042.64
270 Group Insurance – Self-Insurance	173,323.88	126,978.16		300,302.04
291 Other Retirement Plans	22,149.18	17,049.81		39,198.99
Total Personnel Services – Employee Benefits	\$551,150.35	\$458,708.33		\$1,009,858.68
300 <u>Purchased Professional and Technical Services</u>				
330 Other Professional Services		389.00		389.00
Total Purchased Professional and Technical Services		\$389.00		\$389.00
500 <u>Other Purchased Services</u>				
530 Communications	5,241.54	10,692.80		15,934.34
580 Travel	1,111.31	12.00		1,123.31
Total Other Purchased Services	\$6,352.85	\$10,704.80		\$17,057.65
600 <u>Supplies</u>				
610 General Supplies	9,215.40	5,734.59		14,949.99
630 Food	1,817.48	3,151.81		4,969.29
640 Books and Periodicals	993.21	258.02		1,251.23
Total Supplies	\$12,026.09	\$9,144.42		\$21,170.51
800 <u>Other Objects</u>				
810 Dues and Fees	118.55	4,352.44		4,470.99
Total Other Objects	\$118.55	\$4,352.44		\$4,470.99
Total 2380 Office of the Principal Services	\$1,397,860.25	\$1,217,848.68		\$2,615,708.93

LEA : 113362403 Elizabethtown Area SD

Printed 12/5/2019 8:25:26 AM

General Fund (10)

2390 Other Administration Services	<u>Elementary</u>	<u>Secondary</u>	<u>Federal</u>	<u>Total</u>
500 <u>Other Purchased Services</u>				
530 Communications				64,778.53
Total Other Purchased Services				\$64,778.53
600 <u>Supplies</u>				
610 General Supplies				29,411.75
Total Supplies				\$29,411.75
800 <u>Other Objects</u>				
810 Dues and Fees				500.00
Total Other Objects				\$500.00
Total 2390 Other Administration Services				\$94,690.28

LEA : 113362403 Elizabethtown Area SD

Printed 12/5/2019 8:25:26 AM

General Fund (10)				
2400 Support Services – Pupil Health	<u>Elementary</u>	<u>Secondary</u>	<u>Federal</u>	<u>Total</u>
100 <u>Personnel Services – Salaries</u>				
100 Personnel Services – Salaries				470,933.02
Total Personnel Services – Salaries				\$470,933.02
200 <u>Personnel Services – Employee Benefits</u>				
210 Group Insurance – Contracted Provider				10,278.76
220 Social Security Contributions				34,400.15
230 PSERS Retirement Contributions				149,955.82
260 Workers' Compensation				2,688.04
270 Group Insurance – Self-Insurance				119,277.13
Total Personnel Services – Employee Benefits				\$316,599.90
300 <u>Purchased Professional and Technical Services</u>				
330 Other Professional Services				4,095.32
Total Purchased Professional and Technical Services				\$4,095.32
400 <u>Purchased Property Services</u>				
430 Repairs and Maintenance Services				741.89
Total Purchased Property Services				\$741.89
500 <u>Other Purchased Services</u>				
580 Travel				133.05
Total Other Purchased Services				\$133.05
600 <u>Supplies</u>				
610 General Supplies				16,596.24
640 Books and Periodicals				165.02
Total Supplies				\$16,761.26
800 <u>Other Objects</u>				
810 Dues and Fees				130.00
Total Other Objects				\$130.00
Total 2400 Support Services – Pupil Health				\$809,394.44

Total

3,156.32

\$3,156.32

\$3,156.32

LEA : 113362403 Elizabethtown Area SD

Printed 12/5/2019 8:25:26 AM

General Fund (10)

2430 Dental Services

<u>Elementary</u>	<u>Secondary</u>	<u>Federal</u>	<u>Total</u>
-------------------	------------------	----------------	--------------

300 Purchased Professional and Technical Services

330 Other Professional Services			260.00
---------------------------------	--	--	--------

Total Purchased Professional and Technical Services			\$260.00
--	--	--	-----------------

Total 2430 Dental Services			\$260.00
-----------------------------------	--	--	-----------------

LEA : 113362403 Elizabethtown Area SD

Printed 12/5/2019 8:25:26 AM

General Fund (10)				
2440 Nursing Services				
	<u>Elementary</u>	<u>Secondary</u>	<u>Federal</u>	<u>Total</u>
100 <u>Personnel Services – Salaries</u>				
100 Personnel Services – Salaries				470,933.02
Total Personnel Services – Salaries				\$470,933.02
200 <u>Personnel Services – Employee Benefits</u>				
210 Group Insurance – Contracted Provider				10,278.76
220 Social Security Contributions				34,400.15
230 PSERS Retirement Contributions				149,955.82
260 Workers' Compensation				2,688.04
270 Group Insurance – Self-Insurance				119,277.13
Total Personnel Services – Employee Benefits				\$316,599.90
300 <u>Purchased Professional and Technical Services</u>				
330 Other Professional Services				679.00
Total Purchased Professional and Technical Services				\$679.00
400 <u>Purchased Property Services</u>				
430 Repairs and Maintenance Services				741.89
Total Purchased Property Services				\$741.89
500 <u>Other Purchased Services</u>				
580 Travel				133.05
Total Other Purchased Services				\$133.05
600 <u>Supplies</u>				
610 General Supplies				15,246.44
640 Books and Periodicals				165.02
Total Supplies				\$15,411.46
800 <u>Other Objects</u>				
810 Dues and Fees				130.00
Total Other Objects				\$130.00
Total 2440 Nursing Services				\$804,628.32

LEA : 113362403 Elizabethtown Area SD

Printed 12/5/2019 8:25:26 AM

General Fund (10)				
2490 Other Health Services	<u>Elementary</u>	<u>Secondary</u>	<u>Federal</u>	<u>Total</u>
600 <u>Supplies</u>				
610 General Supplies				1,349.80
Total Supplies				\$1,349.80
Total 2490 Other Health Services				\$1,349.80

LEA : 113362403 Elizabethtown Area SD

Printed 12/5/2019 8:25:26 AM

General Fund (10)				
2500 Support Services – Business	<u>Elementary</u>	<u>Secondary</u>	<u>Federal</u>	<u>Total</u>
100 <u>Personnel Services – Salaries</u>				
100 Personnel Services – Salaries				405,574.07
Total Personnel Services – Salaries				\$405,574.07
200 <u>Personnel Services – Employee Benefits</u>				
210 Group Insurance – Contracted Provider				9,474.25
220 Social Security Contributions				30,368.80
230 PSERS Retirement Contributions				131,176.56
250 Unemployment Compensation				1,346.02
260 Workers' Compensation				3,598.83
270 Group Insurance – Self-Insurance				129,753.44
291 Other Retirement Plans				5,688.15
Total Personnel Services – Employee Benefits				\$311,406.05
300 <u>Purchased Professional and Technical Services</u>				
330 Other Professional Services				46,083.39
340 Technical Services				1,600.00
Total Purchased Professional and Technical Services				\$47,683.39
400 <u>Purchased Property Services</u>				
430 Repairs and Maintenance Services				725.40
440 Rentals				137,648.50
Total Purchased Property Services				\$138,373.90
500 <u>Other Purchased Services</u>				
530 Communications				8,590.79
549 Other Advertising/Public Relations				9,009.50
580 Travel				2,620.02
Total Other Purchased Services				\$20,220.31
600 <u>Supplies</u>				
610 General Supplies				13,512.72
630 Food				7,529.88
640 Books and Periodicals				346.70
650 Supplies & Fees – Technology Related				41,848.97
Total Supplies				\$63,238.27
800 <u>Other Objects</u>				
810 Dues and Fees				55,134.58
Total Other Objects				\$55,134.58
Total 2500 Support Services – Business				\$1,041,630.57

LEA : 113362403 Elizabethtown Area SD

Printed 12/5/2019 8:25:26 AM

General Fund (10)				
2510 Fiscal Services	<u>Elementary</u>	<u>Secondary</u>	<u>Federal</u>	<u>Total</u>
100 <u>Personnel Services – Salaries</u>				
100 Personnel Services – Salaries				359,464.39
Total Personnel Services – Salaries				\$359,464.39
200 <u>Personnel Services – Employee Benefits</u>				
210 Group Insurance – Contracted Provider				6,648.71
220 Social Security Contributions				26,981.83
230 PSERS Retirement Contributions				115,762.05
250 Unemployment Compensation				1,346.02
260 Workers' Compensation				3,214.52
270 Group Insurance – Self-Insurance				85,077.26
291 Other Retirement Plans				5,688.15
Total Personnel Services – Employee Benefits				\$244,718.54
300 <u>Purchased Professional and Technical Services</u>				
330 Other Professional Services				46,083.39
340 Technical Services				1,600.00
Total Purchased Professional and Technical Services				\$47,683.39
400 <u>Purchased Property Services</u>				
440 Rentals				137,648.50
Total Purchased Property Services				\$137,648.50
500 <u>Other Purchased Services</u>				
530 Communications				8,590.79
549 Other Advertising/Public Relations				9,009.50
580 Travel				2,620.02
Total Other Purchased Services				\$20,220.31
600 <u>Supplies</u>				
610 General Supplies				7,196.60
630 Food				7,529.88
640 Books and Periodicals				346.70
650 Supplies & Fees – Technology Related				41,848.97
Total Supplies				\$56,922.15
800 <u>Other Objects</u>				
810 Dues and Fees				55,134.58
Total Other Objects				\$55,134.58
Total 2510 Fiscal Services				\$921,791.86

LEA : 113362403 Elizabethtown Area SD

Printed 12/5/2019 8:25:26 AM

General Fund (10)				
2511 Supervision of Fiscal Services - Head of Component	<u>Elementary</u>	<u>Secondary</u>	<u>Federal</u>	<u>Total</u>
100 <u>Personnel Services – Salaries</u>				
100 Personnel Services – Salaries				310,075.99
Total Personnel Services – Salaries				\$310,075.99
200 <u>Personnel Services – Employee Benefits</u>				
210 Group Insurance – Contracted Provider				5,505.00
220 Social Security Contributions				23,188.60
230 PSERS Retirement Contributions				99,251.60
250 Unemployment Compensation				1,346.02
260 Workers' Compensation				2,772.86
270 Group Insurance – Self-Insurance				70,016.30
291 Other Retirement Plans				5,688.15
Total Personnel Services – Employee Benefits				\$207,768.53
300 <u>Purchased Professional and Technical Services</u>				
330 Other Professional Services				44,389.19
340 Technical Services				1,600.00
Total Purchased Professional and Technical Services				\$45,989.19
400 <u>Purchased Property Services</u>				
440 Rentals				137,648.50
Total Purchased Property Services				\$137,648.50
500 <u>Other Purchased Services</u>				
530 Communications				8,590.79
549 Other Advertising/Public Relations				9,009.50
580 Travel				1,991.93
Total Other Purchased Services				\$19,592.22
600 <u>Supplies</u>				
610 General Supplies				7,050.33
630 Food				7,529.88
640 Books and Periodicals				346.70
650 Supplies & Fees – Technology Related				41,848.97
Total Supplies				\$56,775.88
800 <u>Other Objects</u>				
810 Dues and Fees				9,380.44
Total Other Objects				\$9,380.44
Total 2511 Supervision of Fiscal Services - Head of Component				\$787,230.75

LEA : 113362403 Elizabethtown Area SD

Printed 12/5/2019 8:25:26 AM

General Fund (10)				
2514 Payroll Services				
	<u>Elementary</u>	<u>Secondary</u>	<u>Federal</u>	<u>Total</u>
100 <u>Personnel Services – Salaries</u>				
100 Personnel Services – Salaries				49,388.40
Total Personnel Services – Salaries				\$49,388.40
200 <u>Personnel Services – Employee Benefits</u>				
210 Group Insurance – Contracted Provider				1,143.71
220 Social Security Contributions				3,793.23
230 PSERS Retirement Contributions				16,510.45
260 Workers' Compensation				441.66
270 Group Insurance – Self-Insurance				15,060.96
Total Personnel Services – Employee Benefits				\$36,950.01
300 <u>Purchased Professional and Technical Services</u>				
330 Other Professional Services				1,694.20
Total Purchased Professional and Technical Services				\$1,694.20
500 <u>Other Purchased Services</u>				
580 Travel				628.09
Total Other Purchased Services				\$628.09
600 <u>Supplies</u>				
610 General Supplies				146.27
Total Supplies				\$146.27
800 <u>Other Objects</u>				
810 Dues and Fees				3,462.59
Total Other Objects				\$3,462.59
Total 2514 Payroll Services				\$92,269.56

LEA : 113362403 Elizabethtown Area SD

Printed 12/5/2019 8:25:26 AM

General Fund (10)				
2519 Other Fiscal Services	<u>Elementary</u>	<u>Secondary</u>	<u>Federal</u>	<u>Total</u>
800 <u>Other Objects</u>				
810 Dues and Fees				42,291.55
Total Other Objects				\$42,291.55
Total 2519 Other Fiscal Services				\$42,291.55

LEA : 113362403 Elizabethtown Area SD

Printed 12/5/2019 8:25:26 AM

General Fund (10)				
2530 Warehousing and Distributing Services	<u>Elementary</u>	<u>Secondary</u>	<u>Federal</u>	<u>Total</u>
100 <u>Personnel Services – Salaries</u>				
100 Personnel Services – Salaries				46,109.68
Total Personnel Services – Salaries				\$46,109.68
200 <u>Personnel Services – Employee Benefits</u>				
210 Group Insurance – Contracted Provider				2,825.54
220 Social Security Contributions				3,386.97
230 PSERS Retirement Contributions				15,414.51
260 Workers' Compensation				384.31
270 Group Insurance – Self-Insurance				44,676.18
Total Personnel Services – Employee Benefits				\$66,687.51
400 <u>Purchased Property Services</u>				
430 Repairs and Maintenance Services				725.40
Total Purchased Property Services				\$725.40
600 <u>Supplies</u>				
610 General Supplies				6,316.12
Total Supplies				\$6,316.12
Total 2530 Warehousing and Distributing Services				\$119,838.71

LEA : 113362403 Elizabethtown Area SD

Printed 12/5/2019 8:25:26 AM

General Fund (10)				
2600 Operation and Maintenance of Plant Services	<u>Elementary</u>	<u>Secondary</u>	<u>Federal</u>	<u>Total</u>
100 <u>Personnel Services – Salaries</u>				
100 Personnel Services – Salaries				1,483,135.75
Total Personnel Services – Salaries				\$1,483,135.75
200 <u>Personnel Services – Employee Benefits</u>				
210 Group Insurance – Contracted Provider				34,040.61
220 Social Security Contributions				110,684.68
230 PSERS Retirement Contributions				495,022.76
260 Workers' Compensation				8,964.97
270 Group Insurance – Self-Insurance				443,225.33
291 Other Retirement Plans				2,788.33
Total Personnel Services – Employee Benefits				\$1,094,726.68
300 <u>Purchased Professional and Technical Services</u>				
330 Other Professional Services				28,219.53
350 Security / Safety Services				93,944.71
Total Purchased Professional and Technical Services				\$122,164.24
400 <u>Purchased Property Services</u>				
410 Cleaning Services				211,221.26
420 Utility Services				72,656.21
430 Repairs and Maintenance Services				345,202.11
440 Rentals				12,363.64
460 Extermination Services				6,272.00
490 Other Purchased Property Services				3,245.50
Total Purchased Property Services				\$650,960.72
500 <u>Other Purchased Services</u>				
523 General Property and Liability Insurance				207,899.00
530 Communications				601.78
580 Travel				1,263.80
Total Other Purchased Services				\$209,764.58
600 <u>Supplies</u>				
610 General Supplies	102,211.90	223,378.58		325,590.48
620 Energy				740,034.88
630 Food				457.53
650 Supplies & Fees – Technology Related				10,474.81
Total Supplies				\$102,211.90 \$223,378.58 \$1,076,557.70
800 <u>Other Objects</u>				
810 Dues and Fees				266.07
Total Other Objects				\$266.07
Total 2600 Operation and Maintenance of Plant Services	\$102,211.90	\$223,378.58		\$4,637,575.74

LEA : 113362403 Elizabethtown Area SD

Printed 12/5/2019 8:25:26 AM

General Fund (10)

2610 Supervision of Operation and Maintenance of Plant Services	<u>Elementary</u>	<u>Secondary</u>	<u>Federal</u>	<u>Total</u>
100 <u>Personnel Services – Salaries</u>				
100 Personnel Services – Salaries				135,849.10
Total Personnel Services – Salaries				\$135,849.10
200 <u>Personnel Services – Employee Benefits</u>				
210 Group Insurance – Contracted Provider				1,778.18
220 Social Security Contributions				10,253.86
230 PSERS Retirement Contributions				45,247.35
260 Workers' Compensation				28.03
270 Group Insurance – Self-Insurance				18,361.66
291 Other Retirement Plans				2,788.33
Total Personnel Services – Employee Benefits				\$78,457.41
Total 2610 Supervision of Operation and Maintenance of Plant Services				\$214,306.51

LEA : 113362403 Elizabethtown Area SD

Printed 12/5/2019 8:25:26 AM

General Fund (10)

2611 Supervision of Operation and Maintenance of Plant Services – Head of Component	<u>Elementary</u>	<u>Secondary</u>	<u>Federal</u>	<u>Total</u>
100 <u>Personnel Services – Salaries</u>				
100 Personnel Services – Salaries				135,849.10
Total Personnel Services – Salaries				\$135,849.10
200 <u>Personnel Services – Employee Benefits</u>				
210 Group Insurance – Contracted Provider				1,778.18
220 Social Security Contributions				10,253.86
230 PSERS Retirement Contributions				45,247.35
260 Workers' Compensation				28.03
270 Group Insurance – Self-Insurance				18,361.66
291 Other Retirement Plans				2,788.33
Total Personnel Services – Employee Benefits				\$78,457.41
Total 2611 Supervision of Operation and Maintenance of Plant Services – Head of Component				\$214,306.51

LEA : 113362403 Elizabethtown Area SD

Printed 12/5/2019 8:25:26 AM

General Fund (10)				
2620 Operation of Buildings Services	<u>Elementary</u>	<u>Secondary</u>	<u>Federal</u>	<u>Total</u>
100 <u>Personnel Services – Salaries</u>				
100 Personnel Services – Salaries				1,148,776.48
Total Personnel Services – Salaries				\$1,148,776.48
200 <u>Personnel Services – Employee Benefits</u>				
210 Group Insurance – Contracted Provider				26,931.41
220 Social Security Contributions				85,578.63
230 PSERS Retirement Contributions				384,082.43
260 Workers' Compensation				7,165.80
270 Group Insurance – Self-Insurance				358,960.33
Total Personnel Services – Employee Benefits				\$862,718.60
300 <u>Purchased Professional and Technical Services</u>				
330 Other Professional Services				2,665.50
Total Purchased Professional and Technical Services				\$2,665.50
400 <u>Purchased Property Services</u>				
420 Utility Services				72,656.21
440 Rentals				1,983.34
Total Purchased Property Services				\$74,639.55
500 <u>Other Purchased Services</u>				
523 General Property and Liability Insurance				207,899.00
530 Communications				601.78
580 Travel				1,263.80
Total Other Purchased Services				\$209,764.58
600 <u>Supplies</u>				
610 General Supplies	101,970.52	175,344.49		277,315.01
620 Energy				714,688.98
630 Food				457.53
650 Supplies & Fees – Technology Related				10,474.81
Total Supplies	\$101,970.52	\$175,344.49		\$1,002,936.33
800 <u>Other Objects</u>				
810 Dues and Fees				266.07
Total Other Objects				\$266.07
Total 2620 Operation of Buildings Services	\$101,970.52	\$175,344.49		\$3,301,767.11

LEA : 113362403 Elizabethtown Area SD

Printed 12/5/2019 8:25:26 AM

General Fund (10)				
2630 Care and Upkeep of Grounds Services	<u>Elementary</u>	<u>Secondary</u>	<u>Federal</u>	<u>Total</u>
100 <u>Personnel Services – Salaries</u>				
100 Personnel Services – Salaries				154,425.62
Total Personnel Services – Salaries				\$154,425.62
200 <u>Personnel Services – Employee Benefits</u>				
210 Group Insurance – Contracted Provider				4,115.16
220 Social Security Contributions				11,641.35
230 PSERS Retirement Contributions				51,289.86
260 Workers' Compensation				1,357.74
270 Group Insurance – Self-Insurance				49,063.50
Total Personnel Services – Employee Benefits				\$117,467.61
400 <u>Purchased Property Services</u>				
410 Cleaning Services				22,662.06
Total Purchased Property Services				\$22,662.06
600 <u>Supplies</u>				
610 General Supplies	46.21	9,195.63		9,241.84
Total Supplies	\$46.21	\$9,195.63		\$9,241.84
Total 2630 Care and Upkeep of Grounds Services	\$46.21	\$9,195.63		\$303,797.13

LEA : 113362403 Elizabethtown Area SD

Printed 12/5/2019 8:25:26 AM

General Fund (10)				
2640 Care and Upkeep of Equipment Services	<u>Elementary</u>	<u>Secondary</u>	<u>Federal</u>	<u>Total</u>
400 <u>Purchased Property Services</u>				
430 Repairs and Maintenance Services				20,776.28
Total Purchased Property Services				\$20,776.28
600 <u>Supplies</u>				
610 General Supplies	182.98	36,412.55		36,595.53
620 Energy				216.00
Total Supplies	\$182.98	\$36,412.55		\$36,811.53
Total 2640 Care and Upkeep of Equipment Services	\$182.98	\$36,412.55		\$57,587.81

LEA : 113362403 Elizabethtown Area SD

Printed 12/5/2019 8:25:26 AM

General Fund (10)				
2650 Vehicle Operation and Maintenance Services (Other Than Student Transportation Vehicles)	<u>Elementary</u>	<u>Secondary</u>	<u>Federal</u>	<u>Total</u>
400 <u>Purchased Property Services</u>				
430 Repairs and Maintenance Services				17,587.44
Total Purchased Property Services				\$17,587.44
600 <u>Supplies</u>				
610 General Supplies	12.19	2,425.91		2,438.10
620 Energy				25,129.90
Total Supplies	\$12.19	\$2,425.91		\$27,568.00
Total 2650 Vehicle Operation and Maintenance Services (Other Than Student Transportation Vehicles)	\$12.19	\$2,425.91		\$45,155.44

LEA : 113362403 Elizabethtown Area SD

Printed 12/5/2019 8:25:26 AM

General Fund (10)

2660 Safety and Security Services	<u>Elementary</u>	<u>Secondary</u>	<u>Federal</u>	<u>Total</u>
100 <u>Personnel Services – Salaries</u>				
100 Personnel Services – Salaries				44,084.55
Total Personnel Services – Salaries				\$44,084.55
200 <u>Personnel Services – Employee Benefits</u>				
210 Group Insurance – Contracted Provider				1,215.86
220 Social Security Contributions				3,210.84
230 PSERS Retirement Contributions				14,403.12
260 Workers' Compensation				413.40
270 Group Insurance – Self-Insurance				16,839.84
Total Personnel Services – Employee Benefits				\$36,083.06
300 <u>Purchased Professional and Technical Services</u>				
330 Other Professional Services				14,737.50
350 Security / Safety Services				93,944.71
Total Purchased Professional and Technical Services				\$108,682.21
Total 2660 Safety and Security Services				\$188,849.82

LEA : 113362403 Elizabethtown Area SD

Printed 12/5/2019 8:25:26 AM

General Fund (10)				
2690 Other Operation and Maintenance of Plant Services	<u>Elementary</u>	<u>Secondary</u>	<u>Federal</u>	<u>Total</u>
300 <u>Purchased Professional and Technical Services</u>				
330 Other Professional Services				10,816.53
Total Purchased Professional and Technical Services				\$10,816.53
400 <u>Purchased Property Services</u>				
410 Cleaning Services				188,559.20
430 Repairs and Maintenance Services				306,838.39
440 Rentals				10,380.30
460 Extermination Services				6,272.00
490 Other Purchased Property Services				3,245.50
Total Purchased Property Services				\$515,295.39
Total 2690 Other Operation and Maintenance of Plant Services				\$526,111.92

LEA : 113362403 Elizabethtown Area SD

Printed 12/5/2019 8:25:26 AM

General Fund (10)				
2700 Student Transportation Services	<u>Elementary</u>	<u>Secondary</u>	<u>Federal</u>	<u>Total</u>
100 <u>Personnel Services – Salaries</u>				
100 Personnel Services – Salaries				60,031.99
Total Personnel Services – Salaries				\$60,031.99
200 <u>Personnel Services – Employee Benefits</u>				
210 Group Insurance – Contracted Provider				1,418.63
220 Social Security Contributions				4,221.38
230 PSERS Retirement Contributions				20,068.79
270 Group Insurance – Self-Insurance				17,353.72
291 Other Retirement Plans				1,433.62
Total Personnel Services – Employee Benefits				\$44,496.14
300 <u>Purchased Professional and Technical Services</u>				
330 Other Professional Services				295.00
Total Purchased Professional and Technical Services				\$295.00
500 <u>Other Purchased Services</u>				
513 Contracted Carriers			595,896.55	2,373,833.46
516 Student Transportation Services From the IU				158,329.02
580 Travel				78.60
Total Other Purchased Services			\$595,896.55	\$2,532,241.08
600 <u>Supplies</u>				
610 General Supplies				933.55
650 Supplies & Fees – Technology Related				9,150.00
Total Supplies				\$10,083.55
800 <u>Other Objects</u>				
810 Dues and Fees				120.91
Total Other Objects				\$120.91
Total 2700 Student Transportation Services			\$595,896.55	\$2,647,268.67

LEA : 113362403 Elizabethtown Area SD

Printed 12/5/2019 8:25:26 AM

General Fund (10)

2710 Supervision of Student Transportation Services	<u>Elementary</u>	<u>Secondary</u>	<u>Federal</u>	<u>Total</u>
100 <u>Personnel Services – Salaries</u>				
100 Personnel Services – Salaries				57,888.24
Total Personnel Services – Salaries				\$57,888.24
200 <u>Personnel Services – Employee Benefits</u>				
210 Group Insurance – Contracted Provider				1,418.63
220 Social Security Contributions				4,057.36
230 PSERS Retirement Contributions				19,352.12
270 Group Insurance – Self-Insurance				17,353.72
291 Other Retirement Plans				1,433.62
Total Personnel Services – Employee Benefits				\$43,615.45
300 <u>Purchased Professional and Technical Services</u>				
330 Other Professional Services				295.00
Total Purchased Professional and Technical Services				\$295.00
500 <u>Other Purchased Services</u>				
516 Student Transportation Services From the IU				158,329.02
580 Travel				78.60
Total Other Purchased Services				\$158,407.62
600 <u>Supplies</u>				
610 General Supplies				933.55
650 Supplies & Fees – Technology Related				9,150.00
Total Supplies				\$10,083.55
800 <u>Other Objects</u>				
810 Dues and Fees				120.91
Total Other Objects				\$120.91
Total 2710 Supervision of Student Transportation Services				\$270,410.77

LEA : 113362403 Elizabethtown Area SD

Printed 12/5/2019 8:25:26 AM

General Fund (10)				
2711 Supervision of Student Transportation Services – Head of Component	<u>Elementary</u>	<u>Secondary</u>	<u>Federal</u>	<u>Total</u>
100 <u>Personnel Services – Salaries</u>				
100 Personnel Services – Salaries				57,888.24
Total Personnel Services – Salaries				\$57,888.24
200 <u>Personnel Services – Employee Benefits</u>				
210 Group Insurance – Contracted Provider				1,418.63
220 Social Security Contributions				4,057.36
230 PSERS Retirement Contributions				19,352.12
270 Group Insurance – Self-Insurance				17,353.72
291 Other Retirement Plans				1,433.62
Total Personnel Services – Employee Benefits				\$43,615.45
300 <u>Purchased Professional and Technical Services</u>				
330 Other Professional Services				295.00
Total Purchased Professional and Technical Services				\$295.00
500 <u>Other Purchased Services</u>				
516 Student Transportation Services From the IU				158,329.02
580 Travel				78.60
Total Other Purchased Services				\$158,407.62
600 <u>Supplies</u>				
610 General Supplies				933.55
650 Supplies & Fees – Technology Related				9,150.00
Total Supplies				\$10,083.55
800 <u>Other Objects</u>				
810 Dues and Fees				120.91
Total Other Objects				\$120.91
Total 2711 Supervision of Student Transportation Services – Head of Component				\$270,410.77

LEA : 113362403 Elizabethtown Area SD

Printed 12/5/2019 8:25:26 AM

General Fund (10)

2720 Vehicle Operation Services	<u>Elementary</u>	<u>Secondary</u>	<u>Federal</u>	<u>Total</u>
500 <u>Other Purchased Services</u>				
513 Contracted Carriers			595,896.55	2,028,733.12
Total Other Purchased Services			\$595,896.55	\$2,028,733.12
Total 2720 Vehicle Operation Services			\$595,896.55	\$2,028,733.12

LEA : 113362403 Elizabethtown Area SD

Printed 12/5/2019 8:25:26 AM

General Fund (10)

2730 Monitoring Services

Elementary Secondary Federal Total

100 <u>Personnel Services – Salaries</u>				
100 Personnel Services – Salaries				2,143.75
Total Personnel Services – Salaries				\$2,143.75
200 <u>Personnel Services – Employee Benefits</u>				
220 Social Security Contributions				164.02
230 PSERS Retirement Contributions				716.67
Total Personnel Services – Employee Benefits				\$880.69
Total 2730 Monitoring Services				\$3,024.44

LEA : 113362403 Elizabethtown Area SD

Printed 12/5/2019 8:25:26 AM

General Fund (10)				
2750 Nonpublic Transportation	<u>Elementary</u>	<u>Secondary</u>	<u>Federal</u>	<u>Total</u>
500 <u>Other Purchased Services</u>				
513 Contracted Carriers				345,100.34
Total Other Purchased Services				\$345,100.34
Total 2750 Nonpublic Transportation				\$345,100.34

LEA : 113362403 Elizabethtown Area SD

Printed 12/5/2019 8:25:26 AM

General Fund (10)				
2800 Support Services – Central	<u>Elementary</u>	<u>Secondary</u>	<u>Federal</u>	<u>Total</u>
100 <u>Personnel Services – Salaries</u>				
100 Personnel Services – Salaries				811,377.84
Total Personnel Services – Salaries				\$811,377.84
200 <u>Personnel Services – Employee Benefits</u>				
210 Group Insurance – Contracted Provider				14,026.31
220 Social Security Contributions				59,405.97
230 PSERS Retirement Contributions				266,101.35
240 Tuition Reimbursement				15,563.40
250 Unemployment Compensation				19.58
260 Workers' Compensation				7,755.17
270 Group Insurance – Self-Insurance				155,560.78
291 Other Retirement Plans				18,834.34
299 All Other Employee Benefits				11,479.39
Total Personnel Services – Employee Benefits				\$548,746.29
300 <u>Purchased Professional and Technical Services</u>				
330 Other Professional Services				6,883.38
340 Technical Services				5,486.50
360 Employee Training and Development Services				23,464.39
Total Purchased Professional and Technical Services				\$35,834.27
400 <u>Purchased Property Services</u>				
440 Rentals				1,242.80
Total Purchased Property Services				\$1,242.80
500 <u>Other Purchased Services</u>				
530 Communications				1,843.08
550 Printing and Binding				10,849.34
580 Travel				9,401.95
Total Other Purchased Services				\$22,094.37
600 <u>Supplies</u>				
610 General Supplies				21,924.89
630 Food				196.93
640 Books and Periodicals				25.00
650 Supplies & Fees – Technology Related				44,126.91
Total Supplies				\$66,273.73
800 <u>Other Objects</u>				
810 Dues and Fees				10,565.49
Total Other Objects				\$10,565.49
Total 2800 Support Services – Central				\$1,496,134.79

LEA : 113362403 Elizabethtown Area SD

Printed 12/5/2019 8:25:26 AM

General Fund (10)				
2810 Planning, Research, Development and Evaluation Services	<u>Elementary</u>	<u>Secondary</u>	<u>Federal</u>	<u>Total</u>
100 <u>Personnel Services – Salaries</u>				
100 Personnel Services – Salaries				510,873.98
Total Personnel Services – Salaries				\$510,873.98
200 <u>Personnel Services – Employee Benefits</u>				
210 Group Insurance – Contracted Provider				9,046.18
220 Social Security Contributions				37,346.85
230 PSERS Retirement Contributions				166,645.89
260 Workers' Compensation				5,086.17
270 Group Insurance – Self-Insurance				94,555.96
291 Other Retirement Plans				6,932.11
Total Personnel Services – Employee Benefits				\$319,613.16
300 <u>Purchased Professional and Technical Services</u>				
330 Other Professional Services				3,108.38
Total Purchased Professional and Technical Services				\$3,108.38
400 <u>Purchased Property Services</u>				
440 Rentals				1,242.80
Total Purchased Property Services				\$1,242.80
500 <u>Other Purchased Services</u>				
580 Travel				1,482.89
Total Other Purchased Services				\$1,482.89
600 <u>Supplies</u>				
610 General Supplies				12,223.01
650 Supplies & Fees – Technology Related				6,054.54
Total Supplies				\$18,277.55
Total 2810 Planning, Research, Development and Evaluation Services				\$854,598.76

LEA : 113362403 Elizabethtown Area SD

Printed 12/5/2019 8:25:26 AM

General Fund (10)				
2820 Information Services				
	<u>Elementary</u>	<u>Secondary</u>	<u>Federal</u>	<u>Total</u>
100 <u>Personnel Services – Salaries</u>				
100 Personnel Services – Salaries				95,100.00
Total Personnel Services – Salaries				\$95,100.00
200 <u>Personnel Services – Employee Benefits</u>				
210 Group Insurance – Contracted Provider				1,447.79
220 Social Security Contributions				7,214.03
230 PSERS Retirement Contributions				31,624.77
260 Workers' Compensation				844.50
270 Group Insurance – Self-Insurance				16,839.84
291 Other Retirement Plans				3,572.71
Total Personnel Services – Employee Benefits				\$61,543.64
300 <u>Purchased Professional and Technical Services</u>				
330 Other Professional Services				1,525.00
Total Purchased Professional and Technical Services				\$1,525.00
500 <u>Other Purchased Services</u>				
530 Communications				1,843.08
550 Printing and Binding				10,849.34
580 Travel				526.26
Total Other Purchased Services				\$13,218.68
600 <u>Supplies</u>				
610 General Supplies				178.08
640 Books and Periodicals				25.00
650 Supplies & Fees – Technology Related				23,145.26
Total Supplies				\$23,348.34
800 <u>Other Objects</u>				
810 Dues and Fees				260.00
Total Other Objects				\$260.00
Total 2820 Information Services				\$194,995.66

LEA : 113362403 Elizabethtown Area SD

Printed 12/5/2019 8:25:26 AM

General Fund (10)				
2823 Public Information Services				
	<u>Elementary</u>	<u>Secondary</u>	<u>Federal</u>	<u>Total</u>
100 <u>Personnel Services – Salaries</u>				
100 Personnel Services – Salaries				95,100.00
Total Personnel Services – Salaries				\$95,100.00
200 <u>Personnel Services – Employee Benefits</u>				
210 Group Insurance – Contracted Provider				1,447.79
220 Social Security Contributions				7,214.03
230 PSERS Retirement Contributions				31,624.77
260 Workers' Compensation				844.50
270 Group Insurance – Self-Insurance				16,839.84
291 Other Retirement Plans				3,572.71
Total Personnel Services – Employee Benefits				\$61,543.64
300 <u>Purchased Professional and Technical Services</u>				
330 Other Professional Services				1,525.00
Total Purchased Professional and Technical Services				\$1,525.00
500 <u>Other Purchased Services</u>				
530 Communications				1,843.08
550 Printing and Binding				10,849.34
580 Travel				526.26
Total Other Purchased Services				\$13,218.68
600 <u>Supplies</u>				
610 General Supplies				178.08
640 Books and Periodicals				25.00
650 Supplies & Fees – Technology Related				23,145.26
Total Supplies				\$23,348.34
800 <u>Other Objects</u>				
810 Dues and Fees				260.00
Total Other Objects				\$260.00
Total 2823 Public Information Services				\$194,995.66

LEA : 113362403 Elizabethtown Area SD

Printed 12/5/2019 8:25:26 AM

General Fund (10)				
2830 Staff Services				
	<u>Elementary</u>	<u>Secondary</u>	<u>Federal</u>	<u>Total</u>
100 <u>Personnel Services – Salaries</u>				
100 Personnel Services – Salaries				205,403.86
Total Personnel Services – Salaries				\$205,403.86
200 <u>Personnel Services – Employee Benefits</u>				
210 Group Insurance – Contracted Provider				3,532.34
220 Social Security Contributions				14,845.09
230 PSERS Retirement Contributions				67,830.69
240 Tuition Reimbursement				15,563.40
250 Unemployment Compensation				19.58
260 Workers' Compensation				1,824.50
270 Group Insurance – Self-Insurance				44,164.98
291 Other Retirement Plans				8,329.52
299 All Other Employee Benefits				11,479.39
Total Personnel Services – Employee Benefits				\$167,589.49
300 <u>Purchased Professional and Technical Services</u>				
330 Other Professional Services				2,250.00
340 Technical Services				5,486.50
360 Employee Training and Development Services				23,464.39
Total Purchased Professional and Technical Services				\$31,200.89
500 <u>Other Purchased Services</u>				
580 Travel				7,392.80
Total Other Purchased Services				\$7,392.80
600 <u>Supplies</u>				
610 General Supplies				9,523.80
630 Food				196.93
650 Supplies & Fees – Technology Related				14,927.11
Total Supplies				\$24,647.84
800 <u>Other Objects</u>				
810 Dues and Fees				10,305.49
Total Other Objects				\$10,305.49
Total 2830 Staff Services				\$446,540.37

LEA : 113362403 Elizabethtown Area SD

Printed 12/5/2019 8:25:26 AM

General Fund (10)				
2831 Supervision of Staff Services	<u>Elementary</u>	<u>Secondary</u>	<u>Federal</u>	<u>Total</u>
100 <u>Personnel Services – Salaries</u>				
100 Personnel Services – Salaries				205,403.86
Total Personnel Services – Salaries				\$205,403.86
200 <u>Personnel Services – Employee Benefits</u>				
210 Group Insurance – Contracted Provider				3,532.34
220 Social Security Contributions				14,845.09
230 PSERS Retirement Contributions				67,830.69
250 Unemployment Compensation				19.58
260 Workers' Compensation				1,824.50
270 Group Insurance – Self-Insurance				44,164.98
291 Other Retirement Plans				8,329.52
299 All Other Employee Benefits				11,479.39
Total Personnel Services – Employee Benefits				\$152,026.09
300 <u>Purchased Professional and Technical Services</u>				
330 Other Professional Services				2,250.00
Total Purchased Professional and Technical Services				\$2,250.00
500 <u>Other Purchased Services</u>				
580 Travel				858.36
Total Other Purchased Services				\$858.36
600 <u>Supplies</u>				
610 General Supplies				1,351.91
630 Food				166.03
Total Supplies				\$1,517.94
800 <u>Other Objects</u>				
810 Dues and Fees				3,344.49
Total Other Objects				\$3,344.49
Total 2831 Supervision of Staff Services				\$365,400.74

LEA : 113362403 Elizabethtown Area SD

Printed 12/5/2019 8:25:26 AM

General Fund (10)				
2832 Recruitment and Placement Services	<u>Elementary</u>	<u>Secondary</u>	<u>Federal</u>	<u>Total</u>
300 <u>Purchased Professional and Technical Services</u>				
340 Technical Services				5,486.50
Total Purchased Professional and Technical Services				\$5,486.50
600 <u>Supplies</u>				
650 Supplies & Fees – Technology Related				14,927.11
Total Supplies				\$14,927.11
800 <u>Other Objects</u>				
810 Dues and Fees				208.00
Total Other Objects				\$208.00
Total 2832 Recruitment and Placement Services				\$20,621.61

LEA : 113362403 Elizabethtown Area SD

Printed 12/5/2019 8:25:26 AM

General Fund (10)

2834 Staff Development Services – Non-Instructional, Certified Staff Only	<u>Elementary</u>	<u>Secondary</u>	<u>Federal</u>	<u>Total</u>
200 <u>Personnel Services – Employee Benefits</u>				
240 Tuition Reimbursement				15,563.40
Total Personnel Services – Employee Benefits				\$15,563.40
300 <u>Purchased Professional and Technical Services</u>				
360 Employee Training and Development Services				14,358.20
Total Purchased Professional and Technical Services				\$14,358.20
500 <u>Other Purchased Services</u>				
580 Travel				4,243.98
Total Other Purchased Services				\$4,243.98
Total 2834 Staff Development Services – Non-Instructional, Certified Staff Only				\$34,165.58

LEA : 113362403 Elizabethtown Area SD

Printed 12/5/2019 8:25:26 AM

General Fund (10)

2835 Health Services

Elementary Secondary Federal Total

600 <u>Supplies</u>				
610 General Supplies				8,171.89
630 Food				30.90
Total Supplies				\$8,202.79
800 <u>Other Objects</u>				
810 Dues and Fees				6,753.00
Total Other Objects				\$6,753.00
Total 2835 Health Services				\$14,955.79

LEA : 113362403 Elizabethtown Area SD

Printed 12/5/2019 8:25:26 AM

General Fund (10)

2836 Staff Development Services – Non-Instructional, Non-Certified Staff Only	<u>Elementary</u>	<u>Secondary</u>	<u>Federal</u>	<u>Total</u>
300 <u>Purchased Professional and Technical Services</u>				
360 Employee Training and Development Services				9,106.19
Total Purchased Professional and Technical Services				\$9,106.19
500 <u>Other Purchased Services</u>				
580 Travel				2,290.46
Total Other Purchased Services				\$2,290.46
Total 2836 Staff Development Services – Non-Instructional, Non-Certified Staff Only				\$11,396.65

LEA : 113362403 Elizabethtown Area SD

Printed 12/5/2019 8:25:26 AM

General Fund (10)

2900 Other Support Services	<u>Elementary</u>	<u>Secondary</u>	<u>Federal</u>	<u>Total</u>
500 <u>Other Purchased Services</u>				
595 IU Payments By Withholding				25,437.03
Total Other Purchased Services				\$25,437.03
Total 2900 Other Support Services				\$25,437.03

LEA : 113362403 Elizabethtown Area SD

Printed 12/5/2019 8:25:26 AM

General Fund (10)

2910 Support Services Not Listed Elsewhere In the 2000 Series

Elementary Secondary Federal Total

500 <u>Other Purchased Services</u>				
595 IU Payments By Withholding				25,437.03
Total Other Purchased Services				\$25,437.03
Total 2910 Support Services Not Listed Elsewhere In the 2000 Series				\$25,437.03

LEA : 113362403 Elizabethtown Area SD

Printed 12/5/2019 8:25:32 AM

General Fund (10)

3000 Operation of Non-Instructional Services		<u>Total</u>
100 <u>Personnel Services – Salaries</u>		
100 Personnel Services – Salaries	530,471.77	
Total Personnel Services – Salaries		\$530,471.77
200 <u>Personnel Services – Employee Benefits</u>		
210 Group Insurance – Contracted Provider	2,482.57	
220 Social Security Contributions	42,508.89	
230 PSERS Retirement Contributions	156,121.01	
260 Workers' Compensation	3,923.77	
270 Group Insurance – Self-Insurance	28,926.14	
291 Other Retirement Plans	13,689.45	
Total Personnel Services – Employee Benefits		\$247,651.83
300 <u>Purchased Professional and Technical Services</u>		
330 Other Professional Services	74,204.34	
350 Security / Safety Services	6,330.00	
390 Other Purchased Professional and Technical Services	85,402.52	
Total Purchased Professional and Technical Services		\$165,936.86
400 <u>Purchased Property Services</u>		
410 Cleaning Services	4,266.14	
430 Repairs and Maintenance Services	1,243.23	
Total Purchased Property Services		\$5,509.37
500 <u>Other Purchased Services</u>		
510 Student Transportation Services	82,161.62	
580 Travel	1,872.68	
Total Other Purchased Services		\$84,034.30
600 <u>Supplies</u>		
610 General Supplies	196,639.45	
630 Food	369.19	
650 Supplies & Fees – Technology Related	5,199.84	
Total Supplies		\$202,208.48
800 <u>Other Objects</u>		
810 Dues and Fees	52,853.40	
860 Grants To Municipal and Community Service Organizations	26,750.00	
Total Other Objects		\$79,603.40
Total 3000 Operation of Non-Instructional Services		\$1,315,416.01

LEA : 113362403 Elizabethtown Area SD

Printed 12/5/2019 8:25:32 AM

General Fund (10)				
3200 Student Activities	<u>Elementary</u>	<u>Secondary</u>	<u>Federal</u>	<u>Total</u>
100 <u>Personnel Services – Salaries</u>				
100 Personnel Services – Salaries				520,644.40
Total Personnel Services – Salaries				\$520,644.40
200 <u>Personnel Services – Employee Benefits</u>				
210 Group Insurance – Contracted Provider				2,482.57
220 Social Security Contributions				39,608.48
230 PSERS Retirement Contributions				156,121.01
260 Workers' Compensation				3,923.77
270 Group Insurance – Self-Insurance				28,926.14
291 Other Retirement Plans				13,689.45
Total Personnel Services – Employee Benefits				\$244,751.42
300 <u>Purchased Professional and Technical Services</u>				
330 Other Professional Services				74,204.34
350 Security / Safety Services				6,330.00
390 Other Purchased Professional and Technical Services				49,373.60
Total Purchased Professional and Technical Services				\$129,907.94
400 <u>Purchased Property Services</u>				
410 Cleaning Services				4,266.14
430 Repairs and Maintenance Services				1,243.23
Total Purchased Property Services				\$5,509.37
500 <u>Other Purchased Services</u>				
510 Student Transportation Services				82,161.62
580 Travel				1,872.68
Total Other Purchased Services				\$84,034.30
600 <u>Supplies</u>				
610 General Supplies				196,639.45
630 Food				369.19
650 Supplies & Fees – Technology Related				5,199.84
Total Supplies				\$202,208.48
800 <u>Other Objects</u>				
810 Dues and Fees				24,766.40
Total Other Objects				\$24,766.40
Total 3200 Student Activities				\$1,211,822.31

LEA : 113362403 Elizabethtown Area SD

Printed 12/5/2019 8:25:32 AM

General Fund (10)

3300 Community Services	<u>Elementary</u>	<u>Secondary</u>	<u>Federal</u>	<u>Total</u>
100 <u>Personnel Services – Salaries</u>				
100 Personnel Services – Salaries				9,827.37
Total Personnel Services – Salaries				\$9,827.37
200 <u>Personnel Services – Employee Benefits</u>				
220 Social Security Contributions				2,900.41
Total Personnel Services – Employee Benefits				\$2,900.41
300 <u>Purchased Professional and Technical Services</u>				
390 Other Purchased Professional and Technical Services				36,028.92
Total Purchased Professional and Technical Services				\$36,028.92
800 <u>Other Objects</u>				
810 Dues and Fees				28,087.00
860 Grants To Municipal and Community Service Organizations				26,750.00
Total Other Objects				\$54,837.00
Total 3300 Community Services				\$103,593.70

General Fund (10)

5000 Other Expenditures and Financing Uses

Total

900 Other Uses of Funds

932 Capital Reserve Fund Transfers Applicable To Fund 32	500,000.00
939 Other Fund Transfers	3,744,905.29

Total Other Uses of Funds	\$4,244,905.29
Total 5000 Other Expenditures and Financing Uses	\$4,244,905.29

Page 113

LEA : 113362403 Elizabethtown Area SD

Printed 12/5/2019 8:25:40 AM

General Fund (10)

5230 Capital Projects Fund Transfers	<u>Elementary</u>	<u>Secondary</u>	<u>Federal</u>	<u>Total</u>
900 <u>Other Uses of Funds</u>				
932 Capital Reserve Fund Transfers Applicable To Fund 32				500,000.00
Total Other Uses of Funds				\$500,000.00
Total 5230 Capital Projects Fund Transfers				\$500,000.00

LEA : 113362403 Elizabethtown Area SD

Printed 12/5/2019 8:25:40 AM

General Fund (10)

5240 Debt Service Fund Transfers	<u>Elementary</u>	<u>Secondary</u>	<u>Federal</u>	<u>Total</u>
900 <u>Other Uses of Funds</u>				
939 Other Fund Transfers				3,728,108.75
Total Other Uses of Funds				\$3,728,108.75
Total 5240 Debt Service Fund Transfers				\$3,728,108.75

LEA : 113362403 Elizabethtown Area SD

Printed 12/5/2019 8:25:40 AM

General Fund (10)

5250 Enterprise Fund Transfers	<u>Elementary</u>	<u>Secondary</u>	<u>Federal</u>	<u>Total</u>
900 <u>Other Uses of Funds</u>				
939 Other Fund Transfers				16,796.54
Total Other Uses of Funds				\$16,796.54
Total 5250 Enterprise Fund Transfers				\$16,796.54

LEA : 113362403 Elizabethtown Area SD

Printed 12/5/2019 8:25:29 AM

Capital Reserve Fund - § 1431 (32)

2000 Support Services

Total

400 Purchased Property Services

430 Repairs and Maintenance Services	247,651.81
--------------------------------------	------------

Total Purchased Property Services	\$247,651.81
--	---------------------

700 Property

752 Capital Equipment – Original and Additional	359,864.71
---	------------

Total Property	\$359,864.71
-----------------------	---------------------

Total 2000 Support Services	\$607,516.52
------------------------------------	---------------------

LEA : 113362403 Elizabethtown Area SD

Printed 12/5/2019 8:25:29 AM

Capital Reserve Fund - § 1431 (32)

2600 Operation and Maintenance of Plant Services

Elementary Secondary Federal Total

400 Purchased Property Services

430 Repairs and Maintenance Services 247,651.81

Total Purchased Property Services \$247,651.81

700 Property

752 Capital Equipment – Original and Additional 359,864.71

Total Property \$359,864.71

Total 2600 Operation and Maintenance of Plant Services \$607,516.52

LEA : 113362403 Elizabethtown Area SD

Printed 12/5/2019 8:25:29 AM

Capital Reserve Fund - § 1431 (32)

2620 Operation of Buildings Services	<u>Elementary</u>	<u>Secondary</u>	<u>Federal</u>	<u>Total</u>
700 <u>Property</u>				
752 Capital Equipment – Original and Additional				214,246.79
Total Property				\$214,246.79
Total 2620 Operation of Buildings Services				\$214,246.79

LEA : 113362403 Elizabethtown Area SD

Printed 12/5/2019 8:25:29 AM

Capital Reserve Fund - § 1431 (32)

2630 Care and Upkeep of Grounds Services

<u>Elementary</u>	<u>Secondary</u>	<u>Federal</u>	<u>Total</u>
-------------------	------------------	----------------	--------------

700 Property

752 Capital Equipment – Original and Additional			53,660.69
---	--	--	-----------

Total Property			\$53,660.69
-----------------------	--	--	--------------------

Total 2630 Care and Upkeep of Grounds Services			\$53,660.69
---	--	--	--------------------

LEA : 113362403 Elizabethtown Area SD

Printed 12/5/2019 8:25:29 AM

Capital Reserve Fund - § 1431 (32)

2650 Vehicle Operation and Maintenance Services (Other Than Student Transportation Vehicles)	<u>Elementary</u>	<u>Secondary</u>	<u>Federal</u>	<u>Total</u>
700 <u>Property</u>				
752 Capital Equipment – Original and Additional				63,152.23
Total Property				\$63,152.23
Total 2650 Vehicle Operation and Maintenance Services (Other Than Student Transportation Vehicles)				\$63,152.23

LEA : 113362403 Elizabethtown Area SD

Printed 12/5/2019 8:25:29 AM

Capital Reserve Fund - § 1431 (32)				
2690 Other Operation and Maintenance of Plant Services	<u>Elementary</u>	<u>Secondary</u>	<u>Federal</u>	<u>Total</u>
400 <u>Purchased Property Services</u>				
430 Repairs and Maintenance Services				247,651.81
Total Purchased Property Services				\$247,651.81
700 <u>Property</u>				
752 Capital Equipment – Original and Additional				28,805.00
Total Property				\$28,805.00
Total 2690 Other Operation and Maintenance of Plant Services				\$276,456.81

LEA : 113362403 Elizabethtown Area SD

Printed 12/5/2019 8:25:36 AM

Capital Reserve Fund - § 1431 (32)

4000 Facilities Acquisition, Construction and Improvement Services

Total

300 Purchased Professional and Technical Services

330 Other Professional Services	236,597.25
---------------------------------	------------

Total Purchased Professional and Technical Services	\$236,597.25
--	---------------------

400 Purchased Property Services

430 Repairs and Maintenance Services	21,900.00
--------------------------------------	-----------

Total Purchased Property Services	\$21,900.00
--	--------------------

700 Property

752 Capital Equipment – Original and Additional	28,827.00
---	-----------

Total Property	\$28,827.00
-----------------------	--------------------

Total 4000 Facilities Acquisition, Construction and Improvement Services	\$287,324.25
---	---------------------

LEA : 113362403 Elizabethtown Area SD

Printed 12/5/2019 8:25:36 AM

Capital Reserve Fund - § 1431 (32)

4400 Architecture and Engineering Services / Educational Specifications – Improvements

Elementary

Secondary

Federal

Total

300 Purchased Professional and Technical Services

330 Other Professional Services

65,897.88

Total Purchased Professional and Technical Services

\$65,897.88

Total 4400 Architecture and Engineering Services / Educational Specifications – Improvements

\$65,897.88

LEA : 113362403 Elizabethtown Area SD

Printed 12/5/2019 8:25:36 AM

Capital Reserve Fund - § 1431 (32)

4600 Existing Building Improvement Services	<u>Elementary</u>	<u>Secondary</u>	<u>Federal</u>	<u>Total</u>
300 <u>Purchased Professional and Technical Services</u>				
330 Other Professional Services				170,699.37
Total Purchased Professional and Technical Services				\$170,699.37
400 <u>Purchased Property Services</u>				
430 Repairs and Maintenance Services				21,900.00
Total Purchased Property Services				\$21,900.00
700 <u>Property</u>				
752 Capital Equipment – Original and Additional				28,827.00
Total Property				\$28,827.00
Total 4600 Existing Building Improvement Services				\$221,426.37

LEA : 113362403 Elizabethtown Area SD

Printed 12/5/2019 8:25:19 AM

Other Capital Projects Fund (39)

1000 Instruction		<u>Total</u>
600 <u>Supplies</u>		
610 General Supplies		12,793.27
650 Supplies & Fees – Technology Related		59,327.00
Total Supplies		\$72,120.27
700 <u>Property</u>		
752 Capital Equipment – Original and Additional		163,861.99
Total Property		\$163,861.99
Total 1000 Instruction		\$235,982.26

LEA : 113362403 Elizabethtown Area SD

Printed 12/5/2019 8:25:19 AM

Other Capital Projects Fund (39)

1100 Regular Programs – Elementary / Secondary	<u>Elementary</u>	<u>Secondary</u>	<u>Federal</u>	<u>Total</u>
600 <u>Supplies</u>				
610 General Supplies	12,793.27			12,793.27
650 Supplies & Fees – Technology Related	59,327.00			59,327.00
Total Supplies	\$72,120.27			\$72,120.27
700 <u>Property</u>				
752 Capital Equipment – Original and Additional	163,861.99			163,861.99
Total Property	\$163,861.99			\$163,861.99
Total 1100 Regular Programs – Elementary / Secondary	\$235,982.26			\$235,982.26

LEA : 113362403 Elizabethtown Area SD

Printed 12/5/2019 8:25:19 AM

Other Capital Projects Fund (39)

1110 Regular Programs	<u>Elementary</u>	<u>Secondary</u>	<u>Federal</u>	<u>Total</u>
600 <u>Supplies</u>				
610 General Supplies	12,793.27			12,793.27
650 Supplies & Fees – Technology Related	59,327.00			59,327.00
Total Supplies	\$72,120.27			\$72,120.27
700 <u>Property</u>				
752 Capital Equipment – Original and Additional	163,861.99			163,861.99
Total Property	\$163,861.99			\$163,861.99
Total 1110 Regular Programs	\$235,982.26			\$235,982.26

LEA : 113362403 Elizabethtown Area SD

Printed 12/5/2019 8:25:30 AM

Other Capital Projects Fund (39)

2000 Support Services

Total

600 <u>Supplies</u>	
610 General Supplies	15,090.40
620 Energy	807.65
Total Supplies	\$15,898.05
Total 2000 Support Services	\$15,898.05

LEA : 113362403 Elizabethtown Area SD

Printed 12/5/2019 8:25:30 AM

Other Capital Projects Fund (39)

2400 Support Services – Pupil Health

	<u>Elementary</u>	<u>Secondary</u>	<u>Federal</u>	<u>Total</u>
600 <u>Supplies</u>				
610 General Supplies				199.00
Total Supplies				\$199.00
Total 2400 Support Services – Pupil Health				\$199.00

LEA : 113362403 Elizabethtown Area SD

Printed 12/5/2019 8:25:30 AM

Other Capital Projects Fund (39)

2440 Nursing Services

	<u>Elementary</u>	<u>Secondary</u>	<u>Federal</u>	<u>Total</u>
600 <u>Supplies</u>				
610 General Supplies				199.00
Total Supplies				\$199.00
Total 2440 Nursing Services				\$199.00

LEA : 113362403 Elizabethtown Area SD

Printed 12/5/2019 8:25:30 AM

Other Capital Projects Fund (39)

2600 Operation and Maintenance of Plant Services

	<u>Elementary</u>	<u>Secondary</u>	<u>Federal</u>	<u>Total</u>
600 <u>Supplies</u>				
610 General Supplies	14,891.40			14,891.40
620 Energy				807.65
Total Supplies	\$14,891.40			\$15,699.05
Total 2600 Operation and Maintenance of Plant Services	\$14,891.40			\$15,699.05

LEA : 113362403 Elizabethtown Area SD

Printed 12/5/2019 8:25:30 AM

Other Capital Projects Fund (39)

2620 Operation of Buildings Services	<u>Elementary</u>	<u>Secondary</u>	<u>Federal</u>	<u>Total</u>
600 <u>Supplies</u>				
610 General Supplies	14,891.40			14,891.40
620 Energy				807.65
Total Supplies	\$14,891.40			\$15,699.05
Total 2620 Operation of Buildings Services	\$14,891.40			\$15,699.05

LEA : 113362403 Elizabethtown Area SD

Printed 12/5/2019 8:25:37 AM

Other Capital Projects Fund (39)

4000 Facilities Acquisition, Construction and Improvement Services

Total

300 Purchased Professional and Technical Services

330 Other Professional Services	43,430.65
---------------------------------	-----------

Total Purchased Professional and Technical Services	\$43,430.65
--	--------------------

400 Purchased Property Services

440 Rentals	934.46
-------------	--------

450 Construction Services	828,966.79
---------------------------	------------

Total Purchased Property Services	\$829,901.25
--	---------------------

700 Property

752 Capital Equipment – Original and Additional	21,652.17
---	-----------

Total Property	\$21,652.17
-----------------------	--------------------

Total 4000 Facilities Acquisition, Construction and Improvement Services	\$894,984.07
---	---------------------

LEA : 113362403 Elizabethtown Area SD

Printed 12/5/2019 8:25:37 AM

Other Capital Projects Fund (39)

4300 Architecture and Engineering Services / Educational Specifications Development – Original and Additional	<u>Elementary</u>	<u>Secondary</u>	<u>Federal</u>	<u>Total</u>
300 <u>Purchased Professional and Technical Services</u>				
330 Other Professional Services				43,430.65
Total Purchased Professional and Technical Services				\$43,430.65
Total 4300 Architecture and Engineering Services / Educational Specifications Development – Original and Additional				\$43,430.65

LEA : 113362403 Elizabethtown Area SD

Printed 12/5/2019 8:25:37 AM

Other Capital Projects Fund (39)

4600 Existing Building Improvement Services

Elementary Secondary Federal Total

400 Purchased Property Services

440 Rentals 934.46

450 Construction Services 828,966.79

Total Purchased Property Services \$829,901.25

700 Property

752 Capital Equipment – Original and Additional 21,652.17

Total Property \$21,652.17

Total 4600 Existing Building Improvement Services \$851,553.42

LEA : 113362403 Elizabethtown Area SD

Printed 12/5/2019 8:25:41 AM

Debt Service Fund (40)

5000 Other Expenditures and Financing Uses

Total

800 <u>Other Objects</u>	
830 Interest	1,553,109.00
Total Other Objects	\$1,553,109.00
900 <u>Other Uses of Funds</u>	
910 Redemption of Principal	2,175,000.00
Total Other Uses of Funds	\$2,175,000.00
Total 5000 Other Expenditures and Financing Uses	\$3,728,109.00

LEA : 113362403 Elizabethtown Area SD

Printed 12/5/2019 8:25:41 AM

Debt Service Fund (40)

5100 Debt Service / Other Expenditures and Financing Uses	<u>Elementary</u>	<u>Secondary</u>	<u>Federal</u>	<u>Total</u>
800 <u>Other Objects</u>				
830 Interest				1,553,109.00
Total Other Objects				\$1,553,109.00
900 <u>Other Uses of Funds</u>				
910 Redemption of Principal				2,175,000.00
Total Other Uses of Funds				\$2,175,000.00
Total 5100 Debt Service / Other Expenditures and Financing Uses				\$3,728,109.00

LEA : 113362403 Elizabethtown Area SD

Printed 12/5/2019 8:25:41 AM

Debt Service Fund (40)

5110 Debt Service	<u>Elementary</u>	<u>Secondary</u>	<u>Federal</u>	<u>Total</u>
800 <u>Other Objects</u>				
830 Interest				1,553,109.00
Total Other Objects				\$1,553,109.00
900 <u>Other Uses of Funds</u>				
910 Redemption of Principal				2,175,000.00
Total Other Uses of Funds				\$2,175,000.00
Total 5110 Debt Service				\$3,728,109.00

LEA : 113362403 Elizabethtown Area SD

Printed 12/5/2019 8:25:51 AM

	<u>General Fund(10)</u>	<u>Public Purpose Trust(27)</u>	<u>Other Compt Approved (28)</u>	<u>Athletic / Activity(29)</u>	<u>Capital Reserve (690. 1850)(31)</u>
1000 <u>Instruction</u>					
1100 Regular Programs - Elementary / Secondary	28,169,438.46				
1200 Special Programs - Elementary / Secondary	8,525,320.99				
1300 Vocational Education	2,040,017.26				
1400 Other Instructional Programs - Elementary / Secondary	280,964.19				
1500 Nonpublic School Programs	22,259.85				
Total Instruction	\$39,038,000.75				
2000 <u>Support Services</u>					
2100 Support Services - Students	2,325,312.84				
2200 Support Services - Instructional Staff	1,010,420.18				
2300 Support Services - Administration	3,816,424.57				
2400 Support Services - Pupil Health	809,394.44				
2500 Support Services - Business	1,041,630.57				
2600 Operation and Maintenance of Plant Services	4,637,575.74				
2700 Student Transportation Services	2,647,268.67				
2800 Support Services - Central	1,496,134.79				
2900 Other Support Services	25,437.03				
Total Support Services	\$17,809,598.83				
3000 <u>Operation of Non-Instructional Services</u>					
3200 Student Activities	1,211,822.31				
3300 Community Services	103,593.70				
Total Operation of Non-Instructional Services	\$1,315,416.01				
4000 <u>Facilities Acquisition, Construction and Improvement Services</u>					
4300 Architecture and Engineering Services / Educational Specifications Development - Original and Additional					
4400 Architecture and Engineering Services / Educational Specifications - Improvements					
4600 Existing Building Improvement Services					
Total Facilities Acquisition, Construction and Improvement					
5000 <u>Other Expenditures and Financing Uses</u>					
5100 Debt Service / Other Expenditures and Financing Uses					
5200 Interfund Transfers - Out	4,244,905.29				
Total Other Expenditures and Financing Uses	\$4,244,905.29				
TOTAL ACTUAL EXPENDITURES & OTHER FINANCING USES	\$62,407,920.88				

LEA : 113362403 Elizabethtown Area SD

Printed 12/5/2019 8:25:51 AM

	Capital Reserve (1431)(32)	Other Capital Projects Fund(39)	Debt Service(40)	Permanent(90)	Total
1000 Instruction					
1100 Regular Programs - Elementary / Secondary		235,982.26			28,405,420.72
1200 Special Programs - Elementary / Secondary					8,525,320.99
1300 Vocational Education					2,040,017.26
1400 Other Instructional Programs - Elementary / Secondary					280,964.19
1500 Nonpublic School Programs					22,259.85
Total Instruction		\$235,982.26			\$39,273,983.01
2000 Support Services					
2100 Support Services - Students					2,325,312.84
2200 Support Services - Instructional Staff					1,010,420.18
2300 Support Services - Administration					3,816,424.57
2400 Support Services - Pupil Health		199.00			809,593.44
2500 Support Services - Business					1,041,630.57
2600 Operation and Maintenance of Plant Services	607,516.52	15,699.05			5,260,791.31
2700 Student Transportation Services					2,647,268.67
2800 Support Services - Central					1,496,134.79
2900 Other Support Services					25,437.03
Total Support Services	\$607,516.52	\$15,898.05			\$18,433,013.40
3000 Operation of Non-Instructional Services					
3200 Student Activities					1,211,822.31
3300 Community Services					103,593.70
Total Operation of Non-Instructional Services					\$1,315,416.01
4000 Facilities Acquisition, Construction and Improvement Services					
4300 Architecture and Engineering Services / Educational Specifications Development - Original and Additional		43,430.65			43,430.65
4400 Architecture and Engineering Services / Educational Specifications - Improvements	65,897.88				65,897.88
4600 Existing Building Improvement Services	221,426.37	851,553.42			1,072,979.79
Total Facilities Acquisition, Construction and Improvement	\$287,324.25	\$894,984.07			\$1,182,308.32
5000 Other Expenditures and Financing Uses					
5100 Debt Service / Other Expenditures and Financing Uses			3,728,109.00		3,728,109.00
5200 Interfund Transfers - Out					4,244,905.29
Total Other Expenditures and Financing Uses			\$3,728,109.00		\$7,973,014.29
TOTAL ACTUAL EXPENDITURES & OTHER FINANCING USES	\$894,840.77	\$1,146,864.38	\$3,728,109.00		\$68,177,735.03

LEA : 113362403 Elizabethtown Area SD

Printed 12/5/2019 8:25:57 AM

PSERS Salary Data (Salary Data should relate to the General Fund only)

Amount	Description	Amount
	Total Salary Base for salaries subject to PSERS withholding	27,079,367.03
	Total Federally Funded salaries subject to PSERS withholding	818,108.00

Title I Expenditure Data

Amount	Description	Amount
	Expenditures Funded with Current Title I Funds	444,950.00
	Expenditures Funded with Carry over Title I Funds	5,464.00
Total Title I Expenditure Data		\$450,414.00

Benefits for Staff Relative to Collective Bargaining Agreements

	OBJECT	COVERED	NOT COVERED	TOTAL
10 General Fund				
	211 Medical Insurance			
	212 Dental Insurance	222,312.04	74,575.59	296,887.63
	215 Eye Care Insurance	29,992.59	9,298.24	39,290.83
	216 Prescription Insurance			
	271 Self-Insurance Medical Benefits	3,916,767.22	1,258,156.14	5,174,923.36
	272 Self-Insurance Dental Benefits			
	275 Self-Insurance Eye Care Benefits			
	276 Self-Insurance Prescription Benefits			
	FUND TOTAL	\$4,169,071.85	\$1,342,029.97	\$5,511,101.82
50 Enterprise Fund	No Self Insurance data to report			
	211 Medical Insurance			
	212 Dental Insurance			
	215 Eye Care Insurance			
	216 Prescription Insurance			
	271 Self-Insurance Medical Benefits			
	272 Self-Insurance Dental Benefits			
	275 Self-Insurance Eye Care Benefits			
	276 Self-Insurance Prescription Benefits			
	FUND TOTAL			
60 Internal Service Fund	No Self Insurance data to report			
	211 Medical Insurance			
	212 Dental Insurance			
	215 Eye Care Insurance			
	216 Prescription Insurance			
	271 Self-Insurance Medical Benefits			
	272 Self-Insurance Dental Benefits			
	275 Self-Insurance Eye Care Benefits			
	276 Self-Insurance Prescription Benefits			
	FUND TOTAL			
Total of All Funds		\$4,169,071.85	\$1,342,029.97	\$5,511,101.82

LEA : 113362403 Elizabethtown Area SD

Printed 12/5/2019 8:26:01 AM

Function	Special Education (Prior Year)	Nonspecial Education (Prior Year)	Total (Prior Year)	Special Education (Current Year)	Nonspecial Education (Current Year)	Total (Current Year)
2120 Guidance Services	213,086.86	1,162,487.28	1,375,574.14	161,667.23	848,752.95	1,010,420.18
2140 Psychological Services	76,376.55	305,506.18	381,882.73	86,913.61	456,296.48	543,210.09
2150 Speech Pathology and Audiology Services						
2160 Social Work Services	21,599.91	117,837.50	139,437.41	23,489.01	123,317.28	146,806.29
2260 Instruction and Curriculum Development Services	2,207.30	404.60	2,611.90	2,200.30	2,745.58	4,945.88
2350 Legal and Accounting Services	5,363.79	29,261.93	34,625.72	4,341.37	22,792.18	27,133.55
2420 Medical Services	688.20	3,754.46	4,442.66	505.01	2,651.31	3,156.32
2440 Nursing Services	111,098.90	606,095.86	717,194.76	128,631.89	675,317.43	803,949.32
2700 Student Transportation Services	456,268.18	1,987,769.81	2,444,037.99	423,286.41	2,222,253.64	2,645,540.05
Total	\$886,689.69	\$4,213,117.62	\$5,099,807.31	\$831,034.83	\$4,354,126.85	\$5,185,161.68

LEA : 113362403 Elizabethtown Area SD

Printed 12/5/2019 8:26:04 AM

(PRINCIPAL AMOUNTS ONLY)								
<u>GOVERNMENTAL FUNDS/ ACTIVITIES</u>	Short-Term Borrowing	General Obligation Bonds/Notes	Authority Building Obligations	Other Long-Term Debt	Other Post- Employment Benefits (OPEB)	Compensated Absences	Net Pension Liability	Total
1. Debt at Beginning of Fiscal Year		52,015,000.00			7,980,000.00	1,173,468.00	91,317,000.00	152,485,468.00
2. Additional Debt Incurred During Year						121,161.00	1,153,000.00	1,274,161.00
3. Retirements and Repayments		2,175,000.00			3,661,000.00	47,325.00		5,883,325.00
4. Debt at End of Fiscal Year		49,840,000.00			4,319,000.00	1,247,304.00	92,470,000.00	147,876,304.00
5. Accreted Interest at End Of Fiscal Year								
6. Total Debt and Accreted Interest		49,840,000.00			4,319,000.00	1,247,304.00	92,470,000.00	147,876,304.00
7. Current Portion P&I - Due within 1 year		3,574,171.00						3,574,171.00
8. Interest Paid during current fiscal year		1,401,723.75						1,401,723.75

(PRINCIPAL AMOUNTS ONLY)								
<u>PROPRIETARY FUNDS</u>	Short-Term Borrowing	General Obligation Bonds/Notes	Authority Building Obligations	Other Long-Term Debt	Other Post- Employment Benefits (OPEB)	Compensated Absences	Net Pension Liability	Total
1. Debt at Beginning of Fiscal Year					81,000.00		1,864,000.00	1,945,000.00
2. Additional Debt Incurred During Year					3,000.00			3,000.00
3. Retirements and Repayments							930,000.00	930,000.00
4. Debt at End of Fiscal Year					84,000.00		934,000.00	1,018,000.00
5. Accreted Interest at End Of Fiscal Year								
6. Total Debt and Accreted Interest					84,000.00		934,000.00	1,018,000.00
7. Current Portion P&I - Due within 1 year								
8. Interest Paid during current fiscal year								

LEA : 113362403 Elizabethtown Area SD

Total Principal and Interest Payments Made by Your School - All Funds

Function	Fund		Principal (910)	Principal (920)	Interest (830)	Total (Principal +Interest)	Misc Other Uses (990)
5110	10	General Fund					
5110	20	Special Revenue Funds					
5110	30	Capital Projects Funds					
5110	40	Debt Service Fund	2,175,000.00		1,553,109.00	3,728,109.00	
5110	90	Permanent Fund					
5120	10	General Fund					
5120	20	Special Revenue Funds					
5120	30	Capital Projects Funds					
5120	40	Debt Service Fund					
Total Debt Payments - Governmental Funds			\$2,175,000.00		\$1,553,109.00	\$3,728,109.00	

Function	Fund		Principal (910)	Principal (920)	Interest (830)	Total (Principal +Interest)
5110	50	Enterprise Fund				
5110	60	Internal Service Fund				
5120	50	Enterprise Fund				
5120	60	Internal Service Fund				
Total Debt Payments - Proprietary Funds						

LEA : 113362403 Elizabethtown Area SD

Printed 12/5/2019 8:26:04 AM

Debt Details
Governmental Funds/ Activities

Debt Category	Debt Issue Date (MM/YYYY)	Principal Amounts Only				Current Portion Due Within One Year (Principal and Interest)	Interest Paid During Fiscal Year
		Debt at Beginning of Fiscal Year	Additions	Reductions / Repayments	Debt at End of Fiscal Year		
General Obligation Bonds/Notes – CIB	05/2017	9,525,000.00		5,000.00	9,520,000.00	378,120.00	226,735.00
General Obligation Bonds/Notes – CIB	12/2016	5,365,000.00		15,000.00	5,350,000.00	174,131.00	159,315.00
General Obligation Bonds/Notes – CIB	12/2016	4,535,000.00		45,000.00	4,490,000.00	208,425.00	159,010.00
General Obligation Bonds/Notes – CIB	06/2015	8,660,000.00		65,000.00	8,595,000.00	383,064.00	253,698.75
General Obligation Bonds/Notes – CIB	08/2015	7,610,000.00		65,000.00	7,545,000.00	280,023.00	215,997.50
General Obligation Bonds/Notes – CIB	10/2013	8,990,000.00		700,000.00	8,290,000.00	760,000.00	230,960.00
General Obligation Bonds/Notes – CIB	03/2012	7,330,000.00		1,280,000.00	6,050,000.00	1,390,408.00	156,007.50
Compensated Absences		1,173,468.00	121,161.00	47,325.00	1,247,304.00		
Other Post-Employment Benefits (OPEB)		7,980,000.00		3,661,000.00	4,319,000.00		
Net Pension Liability		91,317,000.00	1,153,000.00		92,470,000.00		
Totals for Debt Entered:		\$152,485,468.00	\$1,274,161.00	\$5,883,325.00	\$147,876,304.00	\$3,574,171.00	\$1,401,723.75

Bond Details
Proprietary Funds

Debt Category	Debt Issue Date (MM/YYYY)	Principal Amounts Only				Current Portion Due Within One Year (Principal and Interest)	Interest Paid During Fiscal Year
		Debt at Beginning of Fiscal Year	Additions	Reductions / Repayments	Debt at End of Fiscal Year		
Other Post-Employment Benefits (OPEB)		81,000.00	3,000.00		84,000.00		
Net Pension Liability		1,864,000.00		930,000.00	934,000.00		
Totals for Debt Entered:		\$1,945,000.00	\$3,000.00	\$930,000.00	\$1,018,000.00		

LEA : 113362403 Elizabethtown Area SD

Printed 12/5/2019 8:26:06 AM

General Fund (10)

Section 1: Tuition/Purchased Services as Reported within Expenditure Detail	Amount
Tuition Reported in General Fund Expenditures 1000-560	2,760,697.52
Purchased Services in General Fund Expenditures 1000-594 and 1000-597	2,011.84
Section 1 Total	\$2,762,709.36

Section 2: Tuition Paid to Institution Types During Fiscal Year	Tuition Paid For Nonspecial Education	Tuition Paid For Special Education	Total
1 1306 Institutions			
2 Institutionalized Children's Programs			
3 Juveniles Incarcerated in Adult Facilities			
4 Residential Treatment Facilities			
5 Other Local Education Agencies	8,911.67	251,917.57	260,829.24
6 Brick and Mortar Charter Schools			
7 Cyber Charter Schools	819,409.93	336,341.45	1,155,751.38
8 Career and Technology Centers	900,357.89		900,357.89
9 Approved Private Schools			
10 PA Chartered Schools for the Deaf and Blind			
11 Private Residential Rehabilitative Institutions	55,807.20	140,624.83	196,432.03
12 Juvenile Detention Centers			
13 Special Program Jointures			
14 Other Tuition Not Included Elsewhere In This Section	80,852.40	168,486.42	249,338.82
Section 2 Total	\$1,865,339.09	\$897,370.27	\$2,762,709.36

LEA : 113362403 Elizabethtown Area SD

Printed 12/5/2019 8:26:08 AM

Food Service / Cafeteria Operations Fund (51)

3000 Operation of Non-Instructional Services		<u>Total</u>
100 <u>Personnel Services – Salaries</u>		
100 Personnel Services – Salaries		292,145.00
Total Personnel Services – Salaries		\$292,145.00
200 <u>Personnel Services – Employee Benefits</u>		
210 Group Insurance – Contracted Provider		5,097.00
220 Social Security Contributions		21,989.00
270 Group Insurance – Self-Insurance		12,421.00
291 Other Retirement Plans		1,036.00
Total Personnel Services – Employee Benefits		\$40,543.00
400 <u>Purchased Property Services</u>		
430 Repairs and Maintenance Services		24,964.00
Total Purchased Property Services		\$24,964.00
500 <u>Other Purchased Services</u>		
530 Communications		2,600.00
570 Food Service Management		872,216.00
580 Travel		300.00
Total Other Purchased Services		\$875,116.00
600 <u>Supplies</u>		
610 General Supplies		181,847.00
Total Supplies		\$181,847.00
700 <u>Property</u>		
740 Depreciation		88.00
Total Property		\$88.00
800 <u>Other Objects</u>		
810 Dues and Fees		31,026.00
Total Other Objects		\$31,026.00
Total 3000 Operation of Non-Instructional Services		\$1,445,729.00

LEA : 113362403 Elizabethtown Area SD

Printed 12/5/2019 8:26:08 AM

Food Service / Cafeteria Operations Fund (51)

3100 Food Services	<u>Elementary</u>	<u>Secondary</u>	<u>Federal</u>	<u>Total</u>
100 <u>Personnel Services – Salaries</u>				
100 Personnel Services – Salaries				292,145.00
Total Personnel Services – Salaries				\$292,145.00
200 <u>Personnel Services – Employee Benefits</u>				
210 Group Insurance – Contracted Provider				5,097.00
220 Social Security Contributions				21,989.00
270 Group Insurance – Self-Insurance				12,421.00
291 Other Retirement Plans				1,036.00
Total Personnel Services – Employee Benefits				\$40,543.00
400 <u>Purchased Property Services</u>				
430 Repairs and Maintenance Services				24,964.00
Total Purchased Property Services				\$24,964.00
500 <u>Other Purchased Services</u>				
530 Communications				2,600.00
570 Food Service Management				872,216.00
580 Travel				300.00
Total Other Purchased Services				\$875,116.00
600 <u>Supplies</u>				
610 General Supplies				181,847.00
Total Supplies				\$181,847.00
700 <u>Property</u>				
740 Depreciation				88.00
Total Property				\$88.00
800 <u>Other Objects</u>				
810 Dues and Fees				31,026.00
Total Other Objects				\$31,026.00
Total 3100 Food Services				\$1,445,729.00

	<u>Food Service(51)</u>	<u>Child Care Operations(52)</u>	<u>Other Enterprise(58)</u>	<u>Internal Service(60)</u>	<u>Total</u>
3000 <u>Operation of Non-Instructional Services</u>					
3100 Food Services	1,445,729.00				1,445,729.00
Total Operation of Non-Instructional Services	\$1,445,729.00				\$1,445,729.00
TOTAL ACTUAL EXPENDITURES & OTHER FINANCING USES	\$1,445,729.00				\$1,445,729.00

LEA : 113362403 Elizabethtown Area SD

Printed 12/5/2019 8:26:18 AM

Fund	School	School Number	Local Personnel	Local Nonpersonnel	State Personnel	State Nonpersonnel	Federal Personnel	Federal Nonpersonnel	Total	Explanation
10										
	Bainbridge El Sch	2555	1,598,939.68	327,277.60	719,093.44	147,187.04	57,907.20	11,851.84	2,862,256.80	
	Bear Creek School	8190	7,571,901.85	1,549,848.25	3,405,322.30	697,015.55	274,224.00	56,125.30	13,554,437.25	
	East High Street El Sch	2561	3,136,381.68	641,967.60	1,410,529.44	288,713.04	113,587.20	23,247.84	5,614,426.80	
	Elizabethtown Area MS	6862	4,812,193.46	984,979.70	2,164,194.68	442,976.38	174,278.40	35,669.48	8,614,292.10	
	Elizabethtown Area SHS	2562	9,439,893.88	1,932,196.60	4,245,417.04	868,969.64	341,875.20	69,971.44	16,898,323.80	
	Mill Road El Sch	2558	1,506,693.16	308,396.20	677,607.28	138,695.48	54,566.40	11,168.08	2,697,126.60	
	Rheems El Sch	2559	1,744,996.67	357,173.15	784,779.86	160,632.01	63,196.80	12,934.46	3,123,712.95	
Total			29,811,000.38	6,101,839.10	13,406,944.04	2,744,189.14	1,079,635.20	220,968.44	53,364,576.30	