

LEA Name : Elizabethtown Area SD  
Address : 600 E High St  
Elizabethtown , PA 17022

County : Lancaster  
AUN Number : 113362403  
LEA Type : SD

## Annual Financial Report Accuracy Certification Statement

For Fiscal Year Ending

**6/30/2020**

Pennsylvania Department of Education

&

Office of Comptroller Operations

PDE-2056: Intermediate Unit

PDE-2057: School District, AVTS/CTC, Charter School,  
and Special Program Jointure

**CERTIFICATION: By signing this page I agree that the electronic data submitted is a complete and accurate statement of the financial operations and status of the local education agency for the fiscal year. It has been prepared in accordance with generally accepted accounting principles and established Commonwealth of PA reporting guidelines.**

  
Chief School Administrator Signature

11/23/20  
Date

  
Board Secretary Signature

11/23/20  
Date

Daniel L Forry

Contact Person

dan\_forry@etownschools.org

Contact Person E-mail Address

(717)367-1521

Ext :10009

Contact Person Telephone Number

Contact Person Fax Number

**Audit Certification**  
**Annual Financial Report:**  
For Fiscal Year Ending **6/30/2020**  
**(Pursuant to PA School Code Section 218(b))**

LEA Name : Elizabethtown Area SD  
AUN Number : 113362403  
County : Lancaster

<b>Audit Certification Due:</b> 12/31/2020
---

**This certification is applicable to the Annual Financial Report data submitted through the Consolidated Financial Reporting System (CFRS).**

CERTIFICATION: By signing this page I agree that the financial statements of the school have been properly audited as noted above pursuant to Article XXIV, and in the auditor's professional opinion, the Annual Financial Report (PDE-2057) submitted through CFRS is materially consistent with the audited financial statements.

Chief School Administrator

Michael D. Sallie, Ed.  
Signature

11/23/20  
Date

Board Secretary

Rebecca K. Maxwell  
Signature

11-23-20  
Date

Daniel L Forry

\_\_\_\_\_  
Contact Person

dan\_forry@etownschools.org

\_\_\_\_\_  
Contact Person E-mail Address

(717)367-1521

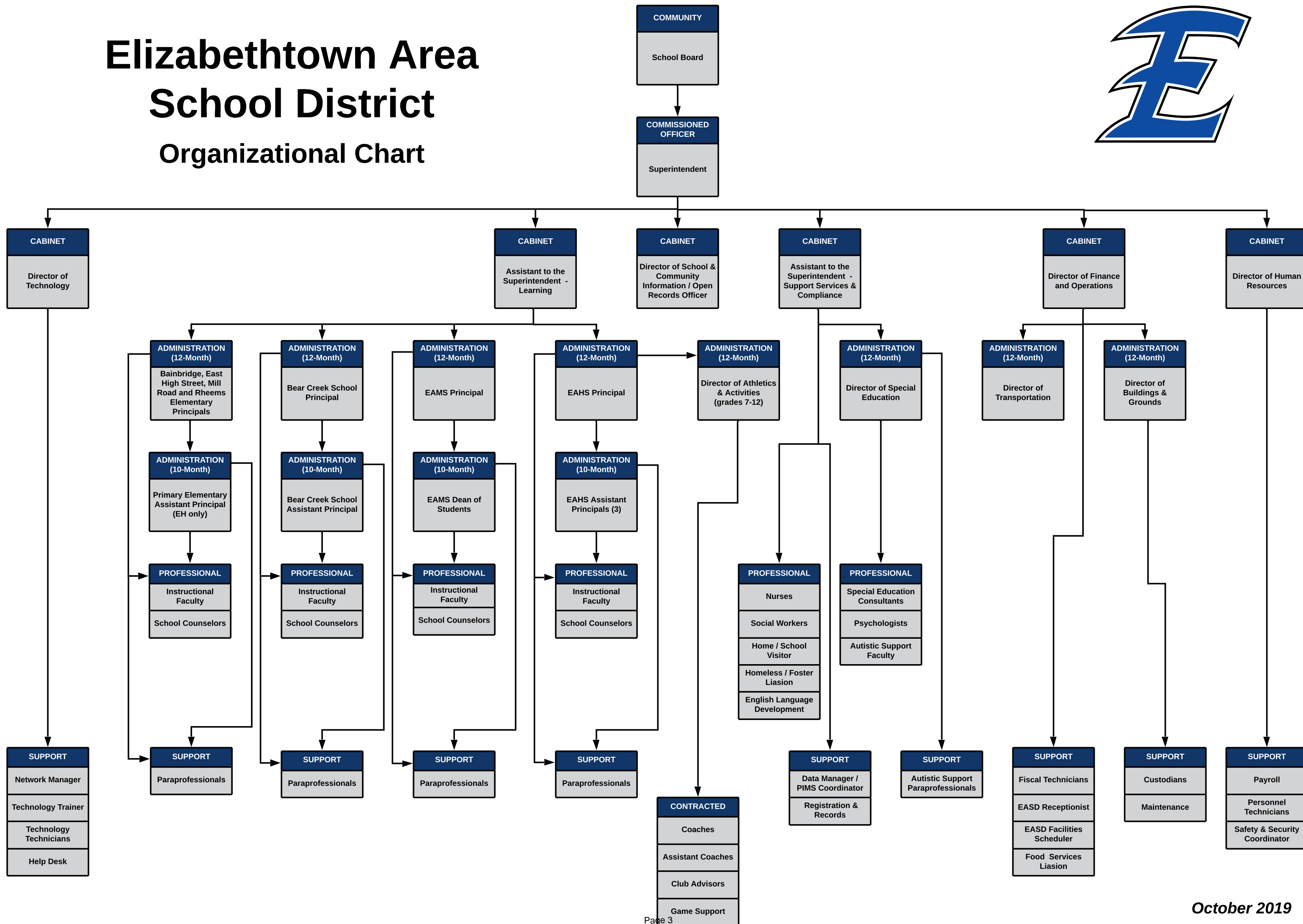
Ext :10009

\_\_\_\_\_  
Contact Person Telephone Number

\_\_\_\_\_  
Contact Person Fax Number

# Elizabethtown Area School District

## Organizational Chart





Book	Policy Manual
Section	600 Finances
Title	GASB Statement 34
Code	622
Status	Active
Legal	1. 24 P.S. 218 2. 24 P.S. 613 Governmental Accounting Standards Board, Statement No. 34
Adopted	March 15, 2016

### **Purpose**

The Board recognizes the need to implement the required accounting and financial reporting standards stipulated by the Pennsylvania Department of Education and required by the Governmental Accounting Standards Board (GASB). GASB 34 directs that information be presented in a highly aggregated manner looking at the long-term financial health of the school district.

The primary objectives of implementing the Governmental Accounting Standards Board (GASB) Statement 34 are to assure compliance with state requirements, and properly account for both the financial and economic resources of the district.

### **Authority**

Participation of the school district in any such activity shall be in accordance with Board policy. [\[1\]](#)[\[2\]](#)

### **Delegation of Responsibility**

The Board delegates to the Business Manager, in cooperation with the approved independent auditor, the responsibility to coordinate the compilation and preparation of all information necessary to implement this policy in accordance with district administrative regulations.

The Business Manager shall prepare the required Management Discussion and Analysis (MD&A). The MD&A shall be in the form required by GASB Statement 34 and shall be submitted to the Board for approval, prior to publication.

Prior to submission of the MD&A for Board approval, the district's independent auditors shall review the MD&A, in accordance with SAS No. 52, "Required Supplementary Information".

### **Guidelines**

#### **Requirements**

## 1. Capitalized Assets

A **capitalized asset** shall be any item acquired by donation or purchase that has a useful life of longer than one (1) year or extends the life of another capitalized asset or increases its value and meets a specific dollar threshold of at least \$5000. Assets will not be grouped for capitalization purposes. A dollar threshold for assets subject to this capitalization policy shall be set at an appropriate level. Management should periodically review these levels with assistance from the local independent auditor and make any modifications necessary.

At management's discretion, and in conjunction with the approved auditor, capital assets purchased with longer-term debt may be capitalized regardless of the specific dollar threshold for the type of class of asset acquired.

## 2. Value of Assets

All capitalized assets shall be recorded at historical cost at acquisition date or estimated cost.

Any donated capital asset shall be recorded at the date of donation using the fair market value of the item at that time.

## 3. Depreciation

Depreciation shall be based on the straight-line method of depreciation over the estimated useful life of each depreciable asset or group of assets. Periodically, management shall evaluate the estimated useful life of each depreciable asset to determine if revision of such estimate is required.

<u>Val Number</u>	<u>Description</u>	<u>Justification</u>
42420	<p>Expenditure Detail: Total current year 2700-513 expenditure varies from prior year by 10%. Correct the data or enter a justification.</p> <p>2700-513, AFR Exp Detail: \$1,990,524.00 2700-513, PY AFR Amount: \$2,373,833.46</p>	<p>Transportation contract costs were lower due to district move to remote with COVID-19 and contract requirement to pay 50% cost for unused days.</p>

LEA : 113362403     Elizabethtown Area SD

Printed 11/20/2020 7:46:00 AM

Amounts Expressed in Whole Dollars		<u>General Fund</u> <u>(10)</u>	<u>Student Sponsored</u> <u>Activity Fund</u> <u>(21)</u>	<u>Public Purpose Trust</u> <u>(27)</u>	<u>Other Compt Approved</u> <u>(28)</u>	<u>Athletic / Activity</u> <u>(29)</u>
<b>Assets And Deferred Outflows Of Resources</b>						
<b>Assets</b>						
0100	Cash and Cash Equivalents	6,559,604				
0110	Investments	3,811,839				
0120	Taxes Receivable	1,445,731				
0130	Due From Other Funds	257,716				
0141	Due From Other Governments	3,396,581				
0142	State Revenue Receivable					
0143	Federal Revenue Receivable					
0145	Other Intergovernmental Revenue Receivable					
0146	Due from Primary Government					
0147	Due from Component Unit					
0150	Other Receivables	118,926				
0170	Inventories	108,497				
0180	Prepaid Expenses (Expenditures)	52,205				
0190	Other Current Assets					
<b>Total Assets</b>		<b>\$15,751,099</b>				
0910	Deferred Outflows of Resources					
<b>Total Assets And Deferred Outflows Of Resources</b>		<b>\$15,751,099</b>				

LEA : 113362403     Elizabethtown Area SD

Printed 11/20/2020 7:46:00 AM

Amounts Expressed in Whole Dollars		<u>Capital Reserve (690.</u> <u>1850)</u> <u>(31)</u>	<u>Capital Reserve (1431)</u> <u>(32)</u>	<u>Other Capital Projects</u> <u>Fund</u> <u>(39)</u>	<u>Debt Service</u> <u>(40)</u>	<u>Permanent</u> <u>(90)</u>
<b>Assets And Deferred Outflows Of Resources</b>						
<b>Assets</b>						
0100	Cash and Cash Equivalents		931,822	9,908,954		
0110	Investments		2,475,618	145,999		
0120	Taxes Receivable					
0130	Due From Other Funds					
0141	Due From Other Governments					
0142	State Revenue Receivable					
0143	Federal Revenue Receivable					
0145	Other Intergovernmental Revenue Receivable					
0146	Due from Primary Government					
0147	Due from Component Unit					
0150	Other Receivables					
0170	Inventories					
0180	Prepaid Expenses (Expenditures)					
0190	Other Current Assets					
<b>Total Assets</b>			<b>\$3,407,440</b>	<b>\$10,054,953</b>		
0910	Deferred Outflows of Resources					
<b>Total Assets And Deferred Outflows Of Resources</b>			<b>\$3,407,440</b>	<b>\$10,054,953</b>		



LEA : 113362403     Elizabethtown Area SD

Printed 11/20/2020 7:46:00 AM

Amounts Expressed in Whole Dollars		<u>Total Governmental</u> <u>Funds</u>
<b>Assets And Deferred Outflows Of Resources</b>		
<b>Assets</b>		
0100	Cash and Cash Equivalents	17,400,380
0110	Investments	6,433,456
0120	Taxes Receivable	1,445,731
0130	Due From Other Funds	257,716
0141	Due From Other Governments	3,396,581
0142	State Revenue Receivable	
0143	Federal Revenue Receivable	
0145	Other Intergovernmental Revenue Receivable	
0146	Due from Primary Government	
0147	Due from Component Unit	
0150	Other Receivables	118,926
0170	Inventories	108,497
0180	Prepaid Expenses (Expenditures)	52,205
0190	Other Current Assets	
<b>Total Assets</b>		<b>\$29,213,492</b>
0910	Deferred Outflows of Resources	
<b>Total Assets And Deferred Outflows Of Resources</b>		<b>\$29,213,492</b>

LEA : 113362403     Elizabethtown Area SD

Printed 11/20/2020 7:46:00 AM

Amounts Expressed in Whole Dollars		<u>General Fund</u> <u>(10)</u>	<u>Student Sponsored</u> <u>Activity Fund</u> <u>(21)</u>	<u>Public Purpose Trust</u> <u>(27)</u>	<u>Other Compt Approved</u> <u>(28)</u>	<u>Athletic / Activity</u> <u>(29)</u>
<b>Liabilities And Deferred Inflows Of Resources And Fund Balances</b>						
<b>Liabilities</b>						
0400	Due to Other Funds	23,417				
0411	Due to Other Governments	245,701				
0412	Due to Primary Government					
0413	Due to Component Unit					
0420	Accounts Payable	702,944				
0430	Contracts Payable					
0440	Current Portion of Long-Term Debt					
0450	Short-Term Payables					
0461	Accrued Salaries and Benefits	6,047,409				
0462	Payroll Deductions and Withholding	379,749				
0480	Unearned Revenues	189,962				
0490	Other Current Liabilities					
<b>Total Liabilities</b>		<b>\$7,589,182</b>				
0950	Deferred Inflows of Resources	546,991				
<b>Fund Balances</b>						
0810	Nonspendable Fund Balance	418,223				
0820	Restricted Fund Balance					
0830	Committed Fund Balance	1,000,000				
0840	Assigned Fund Balance	1,350,000				
0850	Unassigned Fund Balance	4,846,703				
<b>Total Fund Balances</b>		<b>\$7,614,926</b>				
<b>Total Liabilities, Deferred Inflows Of Resources And Fund Balances</b>		<b>\$15,751,099</b>				

LEA : 113362403     Elizabethtown Area SD

Printed 11/20/2020 7:46:00 AM

Amounts Expressed in Whole Dollars		<u>Capital Reserve (690.</u> <u>1850)</u> <u>(31)</u>	<u>Capital Reserve (1431)</u> <u>(32)</u>	<u>Other Capital Projects</u> <u>Fund</u> <u>(39)</u>	<u>Debt Service</u> <u>(40)</u>	<u>Permanent</u> <u>(90)</u>
<b>Liabilities And Deferred Inflows Of Resources And Fund Balances</b>						
<b>Liabilities</b>						
0400	Due to Other Funds					
0411	Due to Other Governments					
0412	Due to Primary Government					
0413	Due to Component Unit					
0420	Accounts Payable		31,700	552,405		
0430	Contracts Payable			65,482		
0440	Current Portion of Long-Term Debt					
0450	Short-Term Payables					
0461	Accrued Salaries and Benefits					
0462	Payroll Deductions and Withholding					
0480	Unearned Revenues					
0490	Other Current Liabilities					
<b>Total Liabilities</b>			<b>\$31,700</b>	<b>\$617,887</b>		
0950	Deferred Inflows of Resources					
<b>Fund Balances</b>						
0810	Nonspendable Fund Balance					
0820	Restricted Fund Balance		3,375,740	9,437,066		
0830	Committed Fund Balance					
0840	Assigned Fund Balance					
0850	Unassigned Fund Balance					
<b>Total Fund Balances</b>			<b>\$3,375,740</b>	<b>\$9,437,066</b>		
<b>Total Liabilities, Deferred Inflows Of Resources And Fund Balances</b>			<b>\$3,407,440</b>	<b>\$10,054,953</b>		

LEA : 113362403     Elizabethtown Area SD

Printed 11/20/2020 7:46:00 AM

Amounts Expressed in Whole Dollars		<u>Total Governmental Funds</u>
<b>Liabilities And Deferred Inflows Of Resources And Fund Balances</b>		
<b>Liabilities</b>		
0400 Due to Other Funds		23,417
0411 Due to Other Governments		245,701
0412 Due to Primary Government		
0413 Due to Component Unit		
0420 Accounts Payable		1,287,049
0430 Contracts Payable		65,482
0440 Current Portion of Long-Term Debt		
0450 Short-Term Payables		
0461 Accrued Salaries and Benefits		6,047,409
0462 Payroll Deductions and Withholding		379,749
0480 Unearned Revenues		189,962
0490 Other Current Liabilities		
<b>Total Liabilities</b>		<b>\$8,238,769</b>
0950 Deferred Inflows of Resources		546,991
<b>Fund Balances</b>		
0810 Nonspendable Fund Balance		418,223
0820 Restricted Fund Balance		12,812,806
0830 Committed Fund Balance		1,000,000
0840 Assigned Fund Balance		1,350,000
0850 Unassigned Fund Balance		4,846,703
<b>Total Fund Balances</b>		<b>\$20,427,732</b>
<b>Total Liabilities, Deferred Inflows Of Resources And Fund Balances</b>		<b>\$29,213,492</b>

Amounts Expressed in Whole Dollars	General Fund (10)	Student Sponsored Activity Fund (21)	Public Purpose Trust (27)	Other Compt Approved (28)	Athletic / Activity (29)
<b>Revenues</b>					
6000 Revenue from Local Sources	44,214,260				
7000 Revenue from State Sources	19,859,222				
8000 Revenue from Federal Sources	876,874				
<b>Total Revenues</b>	<b>\$64,950,356</b>				
<b>Expenditures</b>					
1000 Instruction	40,529,098				
2000 Support Services	17,939,395				
3000 Operation of Non-Instructional Services	1,217,641				
4000 Facilities Acquisition, Construction and Improvement Services					
5110 Debt Service					
5130 Refund of Prior Year Revenues / Receipts	2,309				
<b>Total Expenditures</b>	<b>\$59,688,443</b>				
<b>Excess (Deficiency) Of Revenues Over Expenditures</b>	<b>\$5,261,913</b>				
<b>Other Financing Sources (Uses)</b>					
9110 Face Value of Bonds Issued					
9120 Proceeds from Refunding of Bonds					
9130 Bond Premiums					
9200 Proceeds from Extended-Term Financing					
9300 Interfund Transfers - IN					
9400 Sale of or Compensation for Loss of Fixed Assets	39,317				
9710 Transfers from Component Units					
9720 Transfers from Primary Governments					
9910 Other Financing Sources Not Listed in the 9000 Series					
9990 Insurance Recoveries					
5120 Debt Service – Refunded Bonds					
5150 Bond Discounts					
5200 Interfund Transfers – Out	4,248,105				
5300 Transfers Out to Component Units/Primary Governments					
<b>Total Other Financing Sources (Uses)</b>	<b>(\$4,208,788)</b>				

Amounts Expressed in Whole Dollars	<u>Capital Reserve (690.1850)</u> <u>(31)</u>	<u>Capital Reserve (1431)</u> <u>(32)</u>	<u>Other Capital Projects</u> <u>Fund</u> <u>(39)</u>	<u>Debt Service</u> <u>(40)</u>	<u>Permanent</u> <u>(90)</u>
<b>Revenues</b>					
6000 Revenue from Local Sources		36,864	99,912		
7000 Revenue from State Sources					
8000 Revenue from Federal Sources					
<b>Total Revenues</b>		<b>\$36,864</b>	<b>\$99,912</b>		
<b>Expenditures</b>					
1000 Instruction			984		
2000 Support Services		45,893	150,753	149,595	
3000 Operation of Non-Instructional Services					
4000 Facilities Acquisition, Construction and Improvement Services		371,203	1,147,311		
5110 Debt Service				3,945,586	
5130 Refund of Prior Year Revenues / Receipts					
<b>Total Expenditures</b>		<b>\$417,096</b>	<b>\$1,299,048</b>	<b>\$4,095,181</b>	
<b>Excess (Deficiency) Of Revenues Over Expenditures</b>		<b>(\$380,232)</b>	<b>(\$1,199,136)</b>	<b>(\$4,095,181)</b>	
<b>Other Financing Sources (Uses)</b>					
9110 Face Value of Bonds Issued			9,075,000		
9120 Proceeds from Refunding of Bonds				8,000,000	
9130 Bond Premiums			677,128	495,585	
9200 Proceeds from Extended-Term Financing					
9300 Interfund Transfers - IN		350,000		3,889,596	
9400 Sale of or Compensation for Loss of Fixed Assets					
9710 Transfers from Component Units					
9720 Transfers from Primary Governments					
9910 Other Financing Sources Not Listed in the 9000 Series					
9990 Insurance Recoveries					
5120 Debt Service – Refunded Bonds			5,350	8,290,000	
5150 Bond Discounts					
5200 Interfund Transfers – Out					
5300 Transfers Out to Component Units/Primary Governments					
<b>Total Other Financing Sources (Uses)</b>		<b>\$350,000</b>	<b>\$9,746,778</b>	<b>\$4,095,181</b>	

Amounts Expressed in Whole Dollars		<u>Total Governmental Funds</u>
<b>Revenues</b>		
6000	Revenue from Local Sources	44,351,036
7000	Revenue from State Sources	19,859,222
8000	Revenue from Federal Sources	876,874
<b>Total Revenues</b>		<b>\$65,087,132</b>
<b>Expenditures</b>		
1000	Instruction	40,530,082
2000	Support Services	18,285,636
3000	Operation of Non-Instructional Services	1,217,641
4000	Facilities Acquisition, Construction and Improvement Services	1,518,514
5110	Debt Service	3,945,586
5130	Refund of Prior Year Revenues / Receipts	2,309
<b>Total Expenditures</b>		<b>\$65,499,768</b>
<b>Excess (Deficiency) Of Revenues Over Expenditures</b>		<b>(\$412,636)</b>
<b>Other Financing Sources (Uses)</b>		
9110	Face Value of Bonds Issued	9,075,000
9120	Proceeds from Refunding of Bonds	8,000,000
9130	Bond Premiums	1,172,713
9200	Proceeds from Extended-Term Financing	
9300	Interfund Transfers - IN	4,239,596
9400	Sale of or Compensation for Loss of Fixed Assets	39,317
9710	Transfers from Component Units	
9720	Transfers from Primary Governments	
9910	Other Financing Sources Not Listed in the 9000 Series	
9990	Insurance Recoveries	
5120	Debt Service – Refunded Bonds	8,295,350
5150	Bond Discounts	
5200	Interfund Transfers – Out	4,248,105
5300	Transfers Out to Component Units/Primary Governments	
<b>Total Other Financing Sources (Uses)</b>		<b>\$9,983,171</b>

Amounts Expressed in Whole Dollars		<u>General Fund</u> <u>(10)</u>	<u>Student Sponsored</u> <u>Activity Fund</u> <u>(21)</u>	<u>Public Purpose Trust</u> <u>(27)</u>	<u>Other Compt Approved</u> <u>(28)</u>	<u>Athletic / Activity</u> <u>(29)</u>
<b>Special And Extraordinary Items</b>						
9920	Special Items – Gains					
9930	Extraordinary Items – Gains					
5520	Special Items – Losses					
5530	Extraordinary Items – Losses					
<b>Net Change In Fund Balances</b>		<b>\$1,053,125</b>				
<b>Fund Balance</b>						
0001	Fund Balance - Beginning of Fiscal Year	6,561,801				
<b>Fund Balance - End Of Year</b>		<b>\$7,614,926</b>				



Amounts Expressed in Whole Dollars		<u>Capital Reserve (690.</u> <u>1850)</u> <u>(31)</u>	<u>Capital Reserve (1431)</u> <u>(32)</u>	<u>Other Capital Projects</u> <u>Fund</u> <u>(39)</u>	<u>Debt Service</u> <u>(40)</u>	<u>Permanent</u> <u>(90)</u>
<b>Special And Extraordinary Items</b>						
9920	Special Items – Gains					
9930	Extraordinary Items – Gains					
5520	Special Items – Losses					
5530	Extraordinary Items – Losses					
<b>Net Change In Fund Balances</b>			<b>(\$30,232)</b>	<b>\$8,547,642</b>		
<b>Fund Balance</b>						
0001	Fund Balance - Beginning of Fiscal Year		3,405,972	889,424		
<b>Fund Balance - End Of Year</b>			<b>\$3,375,740</b>	<b>\$9,437,066</b>		

Amounts Expressed in Whole Dollars		<u>Total Governmental Funds</u>
<b>Special And Extraordinary Items</b>		
9920	Special Items – Gains	
9930	Extraordinary Items – Gains	
5520	Special Items – Losses	
5530	Extraordinary Items – Losses	
<b>Net Change In Fund Balances</b>		<b>\$9,570,535</b>
<b>Fund Balance</b>		
0001	Fund Balance - Beginning of Fiscal Year	10,857,197
<b>Fund Balance - End Of Year</b>		<b>\$20,427,732</b>

LEA : 113362403     Elizabethtown Area SD

Printed 11/20/2020 7:46:14 AM

Amounts Expressed in Whole Dollars	Food Service (51)	Child Care Operations (52)	Other Enterprise (58)	TOTAL	Internal Service (60)
<b>Assets And Deferred Outflows Of Resources</b>					
<b>Current Assets</b>					
0100 Cash and Cash Equivalents	57,977			57,977	1,624,531
0110 Investments					397,938
0130 Due From Other Funds	23,417			23,417	54,359
0141 Due From Other Governments					
0142 State Revenue Receivable					
0143 Federal Revenue Receivable					
0146 Due from Primary Government					
0147 Due from Component Unit					
0150 Other Receivables					68,471
0170 Inventories	131,779			131,779	213,710
0180 Prepaid Expenses (Expenditures)					
0190 Other Current Assets					
<b>Total Current Assets</b>	<b>\$213,173</b>			<b>\$213,173</b>	<b>\$2,359,009</b>
<b>Noncurrent Assets</b>					
0211 Land					
0212 Site Improvements (Net)					
0220 Buildings and Building Improvements (Net)					
0230 Machinery, Equipment and Furniture (Net)	2,020			2,020	
0250 Construction in Progress					
0260 Long Term Prepayments					
0290 Other Noncurrent Assets					
<b>Total Noncurrent Assets</b>	<b>\$2,020</b>			<b>\$2,020</b>	
0910 Deferred Outflows of Resources	166,000			166,000	
<b>Total Assets And Deferred Outflows Of Resources</b>	<b>\$381,193</b>			<b>\$381,193</b>	<b>\$2,359,009</b>

LEA : 113362403     Elizabethtown Area SD

Printed 11/20/2020 7:46:14 AM

Amounts Expressed in Whole Dollars	Food Service (51)	Child Care Operations (52)	Other Enterprise (58)	TOTAL	Internal Service (60)
<b>Liabilities And Deferred Inflows Of Resources And Net Position</b>					
<b>Current Liabilities</b>					
0400 Due to Other Funds	311,880			311,880	
0411 Due to Other Governments					
0413 Due to Component Unit					
0420 Accounts Payable	25,143			25,143	400,234
0430 Contracts Payable					
0440 Current Portion of Long-Term Debt					
0450 Short-Term Payables					
0461 Accrued Salaries and Benefits	396			396	
0462 Payroll Deductions and Withholding					
0480 Unearned Revenues	106,474			106,474	
0490 Other Current Liabilities					
<b>Total Current Liabilities</b>	<b>\$443,893</b>			<b>\$443,893</b>	<b>\$400,234</b>
<b>Noncurrent Liabilities</b>					
0510 Bonds Payable					
0520 Extended-Term Financing Agreements Payable					
0530 Lease-Purchase Obligations					
0540 Accumulated Compensated Absences					
0550 Authority Lease Obligations					
0560 Other Post-Employment Benefits (OPEB)	90,000			90,000	
0570 Net Pension Liability	920,000			920,000	
0599 Other Noncurrent Liabilities					
<b>Total Noncurrent Liabilities</b>	<b>\$1,010,000</b>			<b>\$1,010,000</b>	
<b>Total Liabilities</b>	<b>\$1,453,893</b>			<b>\$1,453,893</b>	<b>\$400,234</b>
0950 Deferred Inflows of Resources	524,200			524,200	
<b>Net Position</b>					
0791 Net Investment in Capital Assets	2,020			2,020	
0008 Restricted Net Position (0792 – 0798)					
0799 Unrestricted Net Position	(1,598,920)			(1,598,920)	1,958,775
<b>Total Net Position</b>	<b>(\$1,596,900)</b>			<b>(\$1,596,900)</b>	<b>\$1,958,775</b>
<b>Total Liabilities And Deferred Inflows Of Resources And Net Position</b>	<b>\$381,193</b>			<b>\$381,193</b>	<b>\$2,359,009</b>

Amounts Expressed in Whole Dollars	Food Service (51)	Child Care Operations (52)	Other Enterprise (58)	TOTAL	Internal Service (60)
<b>Operating Revenues</b>					
6600 Food Service Revenue	495,811			495,811	
0071 Charges for Services					6,208,449
0072 Other Operating Revenue					
<b>Total Operating Revenues</b>	<b>\$495,811</b>			<b>\$495,811</b>	<b>\$6,208,449</b>
<b>Operating Expenses</b>					
100 Personnel Services – Salaries	224,078			224,078	
200 Personnel Services – Employee Benefits	18,472			18,472	5,322,626
300 Purchased Professional and Technical Services					126,330
400 Purchased Property Services	21,683			21,683	
500 Other Purchased Services	785,646			785,646	347,889
600 Supplies	128,534			128,534	
740 Depreciation	89			89	
810 Dues and Fees					
890 Miscellaneous Expenditures	24,804			24,804	
<b>Total Operating Expenses</b>	<b>\$1,203,306</b>			<b>\$1,203,306</b>	<b>\$5,796,845</b>
<b>Operating Income (Loss)</b>	<b>(\$707,495)</b>			<b>(\$707,495)</b>	<b>\$411,604</b>
<b>Non Operating Revenues (Expenses)</b>					
6500 Earnings on Investments	4,506			4,506	12,527
6920 Contributions and Donations from Private Sources					
6930 Gains or Losses on Sale of Fixed Assets					
6991 Refunds of a Prior Year Expenditure					
7000 Revenue from State Sources	74,471			74,471	
8000 Revenue from Federal Sources	517,307			517,307	
9990 Insurance Recoveries					
820 Claims and Judgments Against the LEA					
830 Interest					
<b>TOTAL Non Operating Revenues (Expenses)</b>	<b>\$596,284</b>			<b>\$596,284</b>	<b>\$12,527</b>
<b>Income (Loss) Before Contributions And Transfers</b>	<b>(\$111,211)</b>			<b>(\$111,211)</b>	<b>\$424,131</b>

Amounts Expressed in Whole Dollars	<u>Food Service</u> <u>(51)</u>	<u>Child Care Operations</u> <u>(52)</u>	<u>Other Enterprise</u> <u>(58)</u>	<u>TOTAL</u>	<u>Internal Service</u> <u>(60)</u>
<b>Contributions, Transfers, and Special and Extraordinary Items</b>					
5200 Interfund Transfers – Out					
5300 Transfers Out to Component Units/Primary Governments					
5520 Special Items – Losses					
5530 Extraordinary Items – Losses					
9300 Interfund Transfers - IN	8,509			8,509	
9500 Capital Contributions					
9700 Transfers IN From Component Units/Primary Governments					
9920 Special Items – Gains					
9930 Extraordinary Items – Gains					
<b>Change In Net Position</b>	<b>(\$102,702)</b>			<b>(\$102,702)</b>	<b>\$424,131</b>
0002 Net Position - Beginning of Fiscal Year	(1,494,198)			(1,494,198)	1,534,644
0003 Accounting Changes / Residual Equity Transfers					
<b>Net Position - End Of Year</b>	<b>(\$1,596,900)</b>			<b>(\$1,596,900)</b>	<b>\$1,958,775</b>

LEA : 113362403     Elizabethtown Area SD

Printed 11/20/2020 7:46:30 AM

Amounts Expressed in Whole Dollars	<u>Food Service</u> <u>(51)</u>	<u>Child Care Operations</u> <u>(52)</u>	<u>Other Enterprise</u> <u>(58)</u>	<u>TOTAL</u>	<u>Internal Service(60)</u>
<b>Cash Flows From Operating Activities</b>					
0011 Cash Receipts From Users	535,200			535,200	
0012 Cash Receipts From Assessments Made to Other Funds					6,993,458
0013 Cash Receipts From Earnings on Investments					
0014 Cash Receipts From Other Operating Revenue					
0015 Cash Payments To Employees For Services	212,155			212,155	
0016 Cash Payments For Insurance Claims					
0017 Cash Payments To Suppliers For Goods and Services	1,082,947			1,082,947	5,722,802
0018 Cash Payments For Other Operating Expenses					
<b>Net Cash Provided By (Used For) Operating Activities</b>	<b>(\$759,902)</b>			<b>(\$759,902)</b>	<b>\$1,270,656</b>
<b>Cash Flows From Non-Capital Financing Activities</b>					
0021 Receipts From Local Sources - 6000					
0022 Receipts From State Sources - 7000	74,471			74,471	
0023 Receipts From Federal Sources -8000	402,645			402,645	
0024 Notes and Loans Received (Repaid)					
0025 Interest Paid on Notes/Loans - 5100-830					
0026 Operating Transfers In (Out)/Residual Equity Trans					
0027 Operating Transfers In (Out) Primary Government / Comp Unit					
0028 Receipts From Refund of Prior Year Expenditures - 6991					
0029 Special and Extraordinary Gains (losses)					
0030 Receipts from Insurance Recoveries -9990					
<b>Net Cash Prov By (Used for) Non-Capital Financing Activities</b>	<b>\$477,116</b>			<b>\$477,116</b>	
<b>Cash Flows From Capital and Related Financing Activities</b>					
0031 Payments For Fac Acq, Const, and Imp - 4000					
0032 Gain / (Loss) on Sale of Fixed Assets - 6930					
0033 Proceeds From Extended Term Financing - 9200					
0034 Principal Paid on Financing Agreements					
0035 Interest Paid on Financing Agreements - 5100-830					
0036 (Inc) Dec in Contributed Capital					
<b>Net Cash Prov By (Used for) Capital and Related Financing Activities</b>					
<b>Cash Flows From Investing Activities</b>					
0041 Earnings on Investments - 6500	4,506			4,506	12,527
0042 Purchase of Inv Securities / Deposits to Inv Pools					69,634
0043 Receipts From Investment Pool Withdrawals					
0044 Proceeds from Sale and Maturity of Inv Securities					

LEA : 113362403     Elizabethtown Area SD

Printed 11/20/2020 7:46:30 AM

0045   Loans Received (Paid)

Net Cash Prov By (Used for) Investing Activities	\$4,506	\$4,506	\$82,161
--	---------	---------	----------



LEA : 113362403     Elizabethtown Area SD

Printed 11/20/2020 7:46:30 AM

	Food Service (51)	Child Care Operations (52)	Other Enterprise (58)	TOTAL	Internal Service (60)
Net Increase (Decrease) in Cash Flows	(278,280)			(278,280)	1,352,817
0004 Cash and Cash Equivalents Beginning of Year	336,257			336,257	271,714
Cash and Cash Equivalents at Year End	\$57,977			\$57,977	\$1,624,531
Reconciliation of Operating Income (Loss) To Net Cash Provided by (Used For) Operating Activities					
0005 Operating Income (Loss) per REP	(707,495)			(707,495)	411,604
Adjustments					
0051 Depreciation and Net Amortization	89			89	
0052 Provision for Uncollectible Accounts					
0053 Other Adjustments	104,938			104,938	
Effect of Changes in Assets, Liabilities, Deferred Outflows and Deferred Inflows					
0054 (Inc) Dec In Accounts Receivable (0120-0150)					811,319
0055 Advances to Other Funds (0160)	30,080			30,080	
0056 (Inc) Dec in Inventories (0170)	(331)			(331)	
0057 (Inc) Dec in Prepaid Expenses (0180)					
0058 (Inc) Dec in Other Current or Noncurrent Assets	8,494			8,494	(240,020)
0064 Deferred Outflows (0910)					
0059 Inc (Dec) in Accounts Payable (0400-0450)	(101,020)			(101,020)	287,753
0060 Inc (Dec) in Accrued Salaries/Benefits (0461)	339			339	
0065 Inc (Dec) in Net Pension Liabilities (0570)	(134,400)			(134,400)	
0066 Inc (Dec) in Other Postemp Benefit Oblig (0560)					
0061 Inc (Dec) in Payroll Deductions/Withholding (0462)					
0062 Inc (Dec) in Unearned Revenue (0480)	30,895			30,895	
0063 Inc (Dec) in Other Current or Noncurrent Liabilities	8,509			8,509	
0067 Deferred Inflows (0950)					
Total Adjustments	(\$52,407)			(\$52,407)	\$859,052
Cash Provided By (Used for) Total	(\$759,902)			(\$759,902)	\$1,270,656

COMBINED STATEMENT OF CASH FLOWS  
SCHEDULE OF NONCASH INVESTING, CAPITAL, AND FINANCING ACTIVITIES

Explanation of Transaction and Balance Sheet Effect	Amount
Total	

LEA : 113362403     Elizabethtown Area SD

Printed 11/20/2020 7:46:36 AM

Amounts Expressed in Whole Dollars		<u>Private Purpose Trust</u> <u>(71)</u>	<u>Investment Trust</u> <u>(72)</u>	<u>Pension Trust</u> <u>(73)</u>	<u>Student Activity Custodial</u> <u>(81)</u>
<b>Assets And Deferred Outflows Of Resources</b>					
<b>Assets</b>					
0100	Cash and Cash Equivalents	190,318			104,954
0110	Investments	260,706			
0130	Due From Other Funds				
0140	Due from Other Governments, Primary Government and Component Units				
0150	Other Receivables				3,907
0170	Inventories				
0180	Prepaid Expenses (Expenditures)				
0190	Other Current Assets				
0220	Buildings and Building Improvements (Net)				
0230	Machinery, Equipment and Furniture (Net)				
<b>Total Assets</b>		<b>\$451,024</b>			<b>\$108,861</b>
0910	Deferred Outflows of Resources				
<b>Total Assets And Deferred Outflows Of Resources</b>		<b>\$451,024</b>			<b>\$108,861</b>

LEA : 113362403     Elizabethtown Area SD

Printed 11/20/2020 7:46:36 AM

Amounts Expressed in Whole Dollars		<u>Other Custodial</u> <u>(89)</u>	<u>Fiduciary Component Units</u> <u>(98)</u>	<u>Total Fiduciary Funds</u>
<b>Assets And Deferred Outflows Of Resources</b>				
<b>Assets</b>				
0100	Cash and Cash Equivalents			295,272
0110	Investments			260,706
0130	Due From Other Funds			
0140	Due from Other Governments, Primary Government and Component Units			
0150	Other Receivables			3,907
0170	Inventories			
0180	Prepaid Expenses (Expenditures)			
0190	Other Current Assets			
0220	Buildings and Building Improvements (Net)			
0230	Machinery, Equipment and Furniture (Net)			
<b>Total Assets</b>				<b>\$559,885</b>
0910	Deferred Outflows of Resources			
<b>Total Assets And Deferred Outflows Of Resources</b>				<b>\$559,885</b>

LEA : 113362403     Elizabethtown Area SD

Printed 11/20/2020 7:46:36 AM

Amounts Expressed in Whole Dollars		<u>Private Purpose Trust</u>	<u>Investment Trust</u>	<u>Pension Trust</u>	<u>Student Activity Custodial</u>
		<u>(71)</u>	<u>(72)</u>	<u>(73)</u>	<u>(81)</u>
<b>Liabilities, Deferred Inflows Of Resources And Net Position</b>					
<b>Liabilities</b>					
0400	Due to Other Funds				195
0410	Due to Other Governments, Primary Government and Component Units				
0420	Accounts Payable	11,300			195
0430	Contracts Payable				
0450	Short-Term Payables				
0460	Payroll Accruals and Withholdings				
0480	Unearned Revenues				
0490	Other Current Liabilities				108,471
<b>Total Liabilities</b>		<b>\$11,300</b>			<b>\$108,861</b>
0950	Deferred Inflows of Resources				
<b>Net Position</b>					
0791	Net Investment in Capital Assets				
0009	Restricted Net Position (0792 – 0798)	439,724			
0799	Unrestricted Net Position				
<b>Total Net Position</b>		<b>\$439,724</b>			
<b>Total Liabilities, Deferred Inflows Of Resources And Net Position</b>		<b>\$451,024</b>			<b>\$108,861</b>

LEA : 113362403     Elizabethtown Area SD

Printed 11/20/2020 7:46:36 AM

Amounts Expressed in Whole Dollars		<u>Other Custodial</u> <u>(89)</u>	<u>Fiduciary Component Units</u> <u>(98)</u>	<u>Total Fiduciary Funds</u>
<b>Liabilities, Deferred Inflows Of Resources And Net Position</b>				
<b>Liabilities</b>				
0400	Due to Other Funds			195
0410	Due to Other Governments, Primary Government and Component Units			
0420	Accounts Payable			11,495
0430	Contracts Payable			
0450	Short-Term Payables			
0460	Payroll Accruals and Withholdings			
0480	Unearned Revenues			
0490	Other Current Liabilities			108,471
<b>Total Liabilities</b>				<b>\$120,161</b>
0950	Deferred Inflows of Resources			
<b>Net Position</b>				
0791	Net Investment in Capital Assets			
0009	Restricted Net Position (0792 – 0798)			439,724
0799	Unrestricted Net Position			
<b>Total Net Position</b>				<b>\$439,724</b>
<b>Total Liabilities, Deferred Inflows Of Resources And Net Position</b>				<b>\$559,885</b>

Amounts Expressed in Whole Dollars	<u>Private Purpose Trust</u> <u>(71)</u>	<u>Investment Trust</u> <u>(72)</u>	<u>Pension Trust</u> <u>(73)</u>	<u>Student Activity</u> <u>Custodial</u> <u>(81)</u>	<u>Other Custodial</u> <u>(89)</u>	<u>Fiduciary Component</u> <u>Units</u> <u>(98)</u>
<b>Additions</b>						
0091 Gifts and Contributions	8,550					
0095 Net Investment Earnings	6,817					
0092 Other Additions						
<b>Deductions</b>						
0093 Scholarships Awarded	15,702					
0094 Other Deductions						
<b>Change In Net Position</b>	<b>(\$335)</b>					
0006 Net Position – Beginning of Fiscal Year	440,059					
0007 Net Position Held in Trust for Pension Benefits						
<b>Net Position - End of Fiscal Year</b>	<b>\$439,724</b>					

Amounts Expressed in Whole Dollars		<u>Total Fiduciary</u>
		<u>Funds</u>
<b>Additions</b>		
0091	Gifts and Contributions	8,550
0095	Net Investment Earnings	6,817
0092	Other Additions	
<b>Deductions</b>		
0093	Scholarships Awarded	15,702
0094	Other Deductions	
<b>Change In Net Position</b>		<b>(\$335)</b>
0006	Net Position – Beginning of Fiscal Year	440,059
0007	Net Position Held in Trust for Pension Benefits	
<b>Net Position - End of Fiscal Year</b>		<b>\$439,724</b>



	Revenue Reported In Current Year	Current Year Tax Accrual	Prior Year Tax Accrual	Taxes Collected In Current Year
<b>Revenue from Local Sources</b>				
6111 Current Real Estate Taxes	35,649,825.45			35,649,825.45
6112 Interim Real Estate Taxes	305,703.53			305,703.53
6113 Public Utility Realty Taxes	35,059.00			35,059.00
6114 Payments in Lieu of Current Taxes - State / Local	968,698.00			968,698.00
6151 Current Act 511 Earned Income Taxes	4,152,054.75			4,152,054.75
6153 Current Act 511 Real Estate Transfer Taxes	626,341.70			626,341.70
6411 Delinquent Real Estate Taxes	605,066.67			605,066.67
6500 Earnings on Investments	425,732.41			
6700 Revenues from LEA Activities	110,841.33			
6821 State Revenue Received from Other Pennsylvania Public LEAs	500.00			
6831 Federal Revenue Received from Other Pennsylvania Public LEAs	102,404.61			
6832 Federal IDEA Revenue Received as Pass Through	679,111.00			
6890 Other Revenue from Intermediary Sources	109,066.59			
6910 Rentals	15,522.01			
6920 Contributions and Donations from Private Sources	21,895.52			
6944 Receipts from Other LEAs in Pennsylvania - Education	207,778.49			
6991 Refunds of a Prior Year Expenditure	46,099.00			
6999 Other Revenues Not Specified Above	152,559.47			
<b>TOTAL Revenue from Local Sources</b>	<b>\$44,214,259.53</b>			<b>\$42,342,749.10</b>

	Revenue Reported In Current Year			
<b>Revenue from State Sources</b>				
7111 Basic Education Funding-Formula	9,215,282.75			
7112 Basic Education Funding-Social Security	934,538.59			
7160 Tuition for Orphans Subsidy	120,810.24			
7220 Vocational Education	44,362.31			
7271 Special Education funds for School-Aged Pupils	2,251,511.99			
7311 Pupil Transportation Subsidy	953,325.41			
7312 Nonpublic and Charter School Pupil Transportation Subsidy	61,985.00			
7320 Rental and Sinking Fund Payments / Building Reimbursement Subsidy	401,828.20			
7330 Health Services (Medical, Dental, Nurse, Act 25)	77,193.11			
7340 State Property Tax Reduction Allocation	599,402.26			
7361 School Safety and Security Grants	22,493.60			
7505 Ready to Learn Block Grant	472,997.00			
7509 Supplemental Equipment Grants	6,929.67			
7599 Other State Revenue Not Listed Elsewhere in the 7000 Series	9,532.97			
7820 State Share of Retirement Contributions	4,687,029.07			
<b>TOTAL Revenue from State Sources</b>	<b>\$19,859,222.17</b>			

	Revenue Reported <u>In Current Year</u>			
<b><u>Revenue from Federal Sources</u></b>				
8514 NCLB, Title I - Improving the Academic Achievement of the Disadvantaged	449,564.48			
8515 NCLB, Title II - Preparing, Training and Recruiting High Quality Teachers and Principals	98,161.11			
8517 NCLB, Title IV - 21St Century Schools	48,872.95			
8749 Other CARES Act Funding	92,682.00			
8810 School-Based Access Medicaid Reimbursement Program (SBAP) Reimbursements (Access)	170,590.88			
8820 Medical Assistance Reimbursement for Administrative Claiming (Quarterly) Program	17,002.97			
<b>TOTAL Revenue from Federal Sources</b>	<b>\$876,874.39</b>			

	Revenue Reported In Current Year			
<b><u>Other Financing Sources</u></b>				
9400 Sale of or Compensation for Loss of Fixed Assets	39,317.00			
<b>TOTAL Other Financing Sources</b>	<b>\$39,317.00</b>			
<b>TOTAL FROM ALL SOURCES</b>	<b>\$64,989,673.09</b>			<b>\$42,342,749.10</b>

LEA : 113362403     Elizabethtown Area SD

Printed 11/20/2020 7:46:46 AM

	<u>General Fund (10)</u>	<u>Student Sponsored Activity Fund (21)</u>	<u>Public Purpose Trust (27)</u>	<u>Other Compt Approved (28)</u>	<u>Athletic / Activity (29)</u>	<u>Capital Reserve (690, 1850) (31)</u>
<b>6000 Revenue from Local Sources</b>						
6111 Current Real Estate Taxes	35,649,825.45					
6112 Interim Real Estate Taxes	305,703.53					
6113 Public Utility Realty Taxes	35,059.00					
6114 Payments in Lieu of Current Taxes - State / Local	968,698.00					
6151 Current Act 511 Earned Income Taxes	4,152,054.75					
6153 Current Act 511 Real Estate Transfer Taxes	626,341.70					
6411 Delinquent Real Estate Taxes	605,066.67					
6500 Earnings on Investments	425,732.41					
6700 Revenues from LEA Activities	110,841.33					
6821 State Revenue Received from Other Pennsylvania Public LEAs	500.00					
6831 Federal Revenue Received from Other Pennsylvania Public LEAs	102,404.61					
6832 Federal IDEA Revenue Received as Pass Through	679,111.00					
6890 Other Revenue from Intermediary Sources	109,066.59					
6910 Rentals	15,522.01					
6920 Contributions and Donations from Private Sources	21,895.52					
6944 Receipts from Other LEAs in Pennsylvania - Education	207,778.49					
6991 Refunds of a Prior Year Expenditure	46,099.00					
6999 Other Revenues Not Specified Above	152,559.47					
<b>6000 Total Revenue from Local Sources</b>	<b>\$44,214,259.53</b>					
<b>7000 Revenue from State Sources</b>						
7111 Basic Education Funding-Formula	9,215,282.75					
7112 Basic Education Funding-Social Security	934,538.59					
7160 Tuition for Orphans Subsidy	120,810.24					
7220 Vocational Education	44,362.31					
7271 Special Education funds for School-Aged Pupils	2,251,511.99					
7311 Pupil Transportation Subsidy	953,325.41					
7312 Nonpublic and Charter School Pupil Transportation Subsidy	61,985.00					
7320 Rental and Sinking Fund Payments / Building Reimbursement Subsidy	401,828.20					
7330 Health Services (Medical, Dental, Nurse, Act 25)	77,193.11					
7340 State Property Tax Reduction Allocation	599,402.26					
7361 School Safety and Security Grants	22,493.60					
7505 Ready to Learn Block Grant	472,997.00					
7509 Supplemental Equipment Grants	6,929.67					
7599 Other State Revenue Not Listed Elsewhere in the 7000 Series	9,532.97					

LEA : 113362403     Elizabethtown Area SD

Printed 11/20/2020 7:46:46 AM

	Capital Reserve (1431) (32)	Other Capital Projects Fund (39)	Debt Service (40)	Permanent (90)	Total
<b>6000 Revenue from Local Sources</b>					
6111 Current Real Estate Taxes					35,649,825.45
6112 Interim Real Estate Taxes					305,703.53
6113 Public Utility Realty Taxes					35,059.00
6114 Payments in Lieu of Current Taxes - State / Local					968,698.00
6151 Current Act 511 Earned Income Taxes					4,152,054.75
6153 Current Act 511 Real Estate Transfer Taxes					626,341.70
6411 Delinquent Real Estate Taxes					605,066.67
6500 Earnings on Investments	36,864.06	99,911.90			562,508.37
6700 Revenues from LEA Activities					110,841.33
6821 State Revenue Received from Other Pennsylvania Public LEAs					500.00
6831 Federal Revenue Received from Other Pennsylvania Public LEAs					102,404.61
6832 Federal IDEA Revenue Received as Pass Through					679,111.00
6890 Other Revenue from Intermediary Sources					109,066.59
6910 Rentals					15,522.01
6920 Contributions and Donations from Private Sources					21,895.52
6944 Receipts from Other LEAs in Pennsylvania - Education					207,778.49
6991 Refunds of a Prior Year Expenditure					46,099.00
6999 Other Revenues Not Specified Above					152,559.47
<b>6000 Total Revenue from Local Sources</b>	<b>\$36,864.06</b>	<b>\$99,911.90</b>			<b>\$44,351,035.49</b>
<b>7000 Revenue from State Sources</b>					
7111 Basic Education Funding-Formula					9,215,282.75
7112 Basic Education Funding-Social Security					934,538.59
7160 Tuition for Orphans Subsidy					120,810.24
7220 Vocational Education					44,362.31
7271 Special Education funds for School-Aged Pupils					2,251,511.99
7311 Pupil Transportation Subsidy					953,325.41
7312 Nonpublic and Charter School Pupil Transportation Subsidy					61,985.00
7320 Rental and Sinking Fund Payments / Building Reimbursement Subsidy					401,828.20
7330 Health Services (Medical, Dental, Nurse, Act 25)					77,193.11
7340 State Property Tax Reduction Allocation					599,402.26
7361 School Safety and Security Grants					22,493.60
7505 Ready to Learn Block Grant					472,997.00
7509 Supplemental Equipment Grants					6,929.67
7599 Other State Revenue Not Listed Elsewhere in the 7000 Series					9,532.97

LEA : 113362403     Elizabethtown Area SD

Printed 11/20/2020 7:46:46 AM

	<u>General Fund (10)</u>	<u>Student Sponsored Activity Fund (21)</u>	<u>Public Purpose Trust (27)</u>	<u>Other Compt Approved (28)</u>	<u>Athletic / Activity (29)</u>	<u>Capital Reserve (690, 1850) (31)</u>
<b>7000 Revenue from State Sources</b>						
7820 State Share of Retirement Contributions	4,687,029.07					
<b>7000 Total Revenue from State Sources</b>	<b>\$19,859,222.17</b>					
<b>8000 Revenue from Federal Sources</b>						
8514 NCLB, Title I - Improving the Academic Achievement of the Disadvantaged	449,564.48					
8515 NCLB, Title II - Preparing, Training and Recruiting High Quality Teachers and Principals	98,161.11					
8517 NCLB, Title IV - 21St Century Schools	48,872.95					
8749 Other CARES Act Funding	92,682.00					
8810 School-Based Access Medicaid Reimbursement Program (SBAP) Reimbursements (Access)	170,590.88					
8820 Medical Assistance Reimbursement for Administrative Claiming (Quarterly) Program	17,002.97					
<b>8000 Total Revenue from Federal Sources</b>	<b>\$876,874.39</b>					
<b>9000 Other Financing Sources</b>						
9110 Face Value of Bonds Issued						
9120 Proceeds from Refunding of Bonds						
9130 Bond Premiums						
9310 General Fund Transfers						
9400 Sale of or Compensation for Loss of Fixed Assets	39,317.00					
<b>9000 Total Other Financing Sources</b>	<b>\$39,317.00</b>					
<b>Total From All Sources</b>	<b>\$64,989,673.09</b>					

LEA : 113362403     Elizabethtown Area SD

Printed 11/20/2020 7:46:46 AM

	<u>Capital Reserve</u> <u>(1431) (32)</u>	<u>Other Capital</u> <u>Projects Fund (39)</u>	<u>Debt Service (40)</u>	<u>Permanent (90)</u>	<u>Total</u>
<b>7000 Revenue from State Sources</b>					
7820 State Share of Retirement Contributions					4,687,029.07
<b>7000 Total Revenue from State Sources</b>					<b>\$19,859,222.17</b>
<b>8000 Revenue from Federal Sources</b>					
8514 NCLB, Title I - Improving the Academic Achievement of the Disadvantaged					449,564.48
8515 NCLB, Title II - Preparing, Training and Recruiting High Quality Teachers and Principals					98,161.11
8517 NCLB, Title IV - 21st Century Schools					48,872.95
8749 Other CARES Act Funding					92,682.00
8810 School-Based Access Medicaid Reimbursement Program (SBAP) Reimbursements (Access)					170,590.88
8820 Medical Assistance Reimbursement for Administrative Claiming (Quarterly) Program					17,002.97
<b>8000 Total Revenue from Federal Sources</b>					<b>\$876,874.39</b>
<b>9000 Other Financing Sources</b>					
9110 Face Value of Bonds Issued		9,074,999.95			9,074,999.95
9120 Proceeds from Refunding of Bonds			8,000,000.00		8,000,000.00
9130 Bond Premiums		677,128.00	495,585.00		1,172,713.00
9310 General Fund Transfers	350,000.00		3,889,596.25		4,239,596.25
9400 Sale of or Compensation for Loss of Fixed Assets					39,317.00
<b>9000 Total Other Financing Sources</b>	<b>\$350,000.00</b>	<b>\$9,752,127.95</b>	<b>\$12,385,181.25</b>		<b>\$22,526,626.20</b>
<b>Total From All Sources</b>	<b>\$386,864.06</b>	<b>\$9,852,039.85</b>	<b>\$12,385,181.25</b>		<b>\$87,613,758.25</b>



LEA : 113362403     Elizabethtown Area SD

Printed 11/20/2020 7:46:50 AM

	<u>General Fund (10)</u>	<u>Student Sponsored</u> <u>Activity Fund (21)</u>	<u>Public Purpose Trust (27)</u>	<u>Other Compt Approved</u> <u>(28)</u>	<u>Athletic / Activity (29)</u>	<u>Capital Reserve (690.</u> <u>1850) (31)</u>
Revenue from Local Sources	44,214,259.53					
Revenue from State Sources	19,859,222.17					
Revenue from Federal Sources	876,874.39					
Other Financing Sources	39,317.00					
Total From All Sources	\$64,989,673.09					

LEA : 113362403     Elizabethtown Area SD

Printed 11/20/2020 7:46:50 AM

	<u>Capital Reserve (1431)</u> <u>(32)</u>	<u>Other Capital Projects</u> <u>Fund (39)</u>	<u>Debt Service (40)</u>	<u>Permanent (90)</u>	<u>Total</u>
Revenue from Local Sources	36,864.06	99,911.90			44,351,035.49
Revenue from State Sources					19,859,222.17
Revenue from Federal Sources					876,874.39
Other Financing Sources	350,000.00	9,752,127.95	12,385,181.25		22,526,626.20
Total From All Sources	\$386,864.06	\$9,852,039.85	\$12,385,181.25		\$87,613,758.25

LEA : 113362403     Elizabethtown Area SD

Printed 11/20/2020 7:46:56 AM

General Fund (10)

1000 Instruction		Total
100 <u>Personnel Services – Salaries</u>		
100 Personnel Services – Salaries		20,138,450.74
Total Personnel Services – Salaries		\$20,138,450.74
200 <u>Personnel Services – Employee Benefits</u>		
210 Group Insurance – Contracted Provider		320,132.92
220 Social Security Contributions		1,493,936.40
230 PSERS Retirement Contributions		6,883,298.26
260 Workers' Compensation		150,984.73
270 Group Insurance – Self-Insurance		4,153,014.32
291 Other Retirement Plans		78,343.12
292 Health Savings Accounts		171,500.00
Total Personnel Services – Employee Benefits		\$13,251,209.75
300 <u>Purchased Professional and Technical Services</u>		
322 Professional Educational Services – Ius		1,261,408.60
323 Professional Educational Services – Other Educational Agencies		4,988.00
329 Professional Educational Services – Other		1,129,938.39
330 Other Professional Services		24,475.71
360 Employee Training and Development Services		4,175.00
Total Purchased Professional and Technical Services		\$2,424,985.70
400 <u>Purchased Property Services</u>		
430 Repairs and Maintenance Services		11,271.72
440 Rentals		76,571.43
Total Purchased Property Services		\$87,843.15
500 <u>Other Purchased Services</u>		
510 Student Transportation Services		20,995.34
561 Tuition To Other School Districts Within the State		461,068.32
562 Tuition To Pennsylvania Charter Schools		1,035,766.37
564 Tuition To Career and Technology Centers		890,354.92
567 Tuition To Approved Private Schools (APS) and PA Chartered Schools for the Deaf and Blind		243,655.43
568 Tuition To Private Residential Rehabilitative Institutions (PRRI) [In-State] and Detention Centers		470,525.67
580 Travel		5,632.06
594 IU Payment By Withholding for Institutionalized Children's Programs – Special Classes		690.98
Total Other Purchased Services		\$3,128,689.09
600 <u>Supplies</u>		
610 General Supplies		452,867.22
630 Food		1,254.89
640 Books and Periodicals		9,923.57
650 Supplies & Fees – Technology Related		1,019,448.78
Total Supplies		\$1,483,494.46
800 <u>Other Objects</u>		
810 Dues and Fees		14,425.50

LEA : 113362403     Elizabethtown Area SD

Printed 11/20/2020 7:46:56 AM

General Fund (10)

1000 Instruction

Total

Total Other Objects	\$14,425.50
Total 1000 Instruction	\$40,529,098.39

LEA : 113362403     Elizabethtown Area SD

Printed 11/20/2020 7:46:56 AM

General Fund (10)

1100 Regular Programs – Elementary / Secondary	Elementary	Secondary	Federal	Total
<b>100 Personnel Services – Salaries</b>				
100 Personnel Services – Salaries	8,183,665.57	7,670,930.59	415,121.08	16,269,717.24
<b>Total Personnel Services – Salaries</b>	<b>\$8,183,665.57</b>	<b>\$7,670,930.59</b>	<b>\$415,121.08</b>	<b>\$16,269,717.24</b>
<b>200 Personnel Services – Employee Benefits</b>				
210 Group Insurance – Contracted Provider	125,171.15	117,693.93	3,497.41	246,362.49
220 Social Security Contributions	607,883.04	566,310.18	30,941.12	1,205,134.34
230 PSERS Retirement Contributions	2,783,572.13	2,627,793.81	140,545.99	5,551,911.93
260 Workers' Compensation	63,534.18	52,862.50	2,860.63	119,257.31
270 Group Insurance – Self-Insurance	1,617,531.32	1,459,898.78	28,669.88	3,106,099.98
291 Other Retirement Plans	49,100.00	25,625.00		74,725.00
292 Health Savings Accounts	63,661.73	56,618.10	3,940.17	124,220.00
<b>Total Personnel Services – Employee Benefits</b>	<b>\$5,310,453.55</b>	<b>\$4,906,802.30</b>	<b>\$210,455.20</b>	<b>\$10,427,711.05</b>
<b>300 Purchased Professional and Technical Services</b>				
322 Professional Educational Services – Ius	7,854.27	168,848.98		176,703.25
323 Professional Educational Services – Other Educational Agencies		4,988.00		4,988.00
329 Professional Educational Services – Other	258,496.48	136,983.35	2,214.49	397,694.32
<b>Total Purchased Professional and Technical Services</b>	<b>\$266,350.75</b>	<b>\$310,820.33</b>	<b>\$2,214.49</b>	<b>\$579,385.57</b>
<b>400 Purchased Property Services</b>				
430 Repairs and Maintenance Services	3,406.49	7,865.23		11,271.72
440 Rentals	12.59	2,505.87		2,518.46
<b>Total Purchased Property Services</b>	<b>\$3,419.08</b>	<b>\$10,371.10</b>		<b>\$13,790.18</b>
<b>500 Other Purchased Services</b>				
510 Student Transportation Services	9,498.59	11,496.75		20,995.34
561 Tuition To Other School Districts Within the State	10,170.05	26,592.47		36,762.52
562 Tuition To Pennsylvania Charter Schools	3,497.45	695,992.63		699,490.08
568 Tuition To Private Residential Rehabilitative Institutions (PRRI) [In-State] and Detention Centers	3,016.10	31,628.31		34,644.41
580 Travel	1,394.55	811.02		2,205.57
<b>Total Other Purchased Services</b>	<b>\$27,576.74</b>	<b>\$766,521.18</b>		<b>\$794,097.92</b>
<b>600 Supplies</b>				
610 General Supplies	183,437.32	170,925.10	3,605.51	357,967.93
630 Food	6.27	1,248.62		1,254.89
640 Books and Periodicals	8,814.19	179.70		8,993.89
650 Supplies & Fees – Technology Related	12,011.06	1,004,563.29		1,016,574.35
<b>Total Supplies</b>	<b>\$204,268.84</b>	<b>\$1,176,916.71</b>	<b>\$3,605.51</b>	<b>\$1,384,791.06</b>
<b>800 Other Objects</b>				
810 Dues and Fees	664.48	6,064.52		6,729.00
<b>Total Other Objects</b>	<b>\$664.48</b>	<b>\$6,064.52</b>		<b>\$6,729.00</b>
<b>Total 1100 Regular Programs – Elementary / Secondary</b>	<b>\$13,996,399.01</b>	<b>\$14,848,426.73</b>	<b>\$631,396.28</b>	<b>\$29,476,222.02</b>

LEA : 113362403     Elizabethtown Area SD

Printed 11/20/2020 7:46:56 AM

General Fund (10)

1110 Regular Programs

	Elementary	Secondary	Federal	Total
<b>100 <u>Personnel Services – Salaries</u></b>				
100 Personnel Services – Salaries	8,183,665.57	7,670,930.59	6,245.63	15,860,841.79
<b>Total Personnel Services – Salaries</b>	<b>\$8,183,665.57</b>	<b>\$7,670,930.59</b>	<b>\$6,245.63</b>	<b>\$15,860,841.79</b>
<b>200 <u>Personnel Services – Employee Benefits</u></b>				
210 Group Insurance – Contracted Provider	125,171.15	117,693.93		242,865.08
220 Social Security Contributions	607,883.04	566,310.18	440.87	1,174,634.09
230 PSERS Retirement Contributions	2,783,572.13	2,627,793.81	342.50	5,411,708.44
260 Workers' Compensation	63,534.18	52,862.50		116,396.68
270 Group Insurance – Self-Insurance	1,617,531.32	1,459,898.78		3,077,430.10
291 Other Retirement Plans	49,100.00	25,625.00		74,725.00
292 Health Savings Accounts	63,661.73	56,618.10		120,279.83
<b>Total Personnel Services – Employee Benefits</b>	<b>\$5,310,453.55</b>	<b>\$4,906,802.30</b>	<b>\$783.37</b>	<b>\$10,218,039.22</b>
<b>300 <u>Purchased Professional and Technical Services</u></b>				
322 Professional Educational Services – Ius	7,854.27	168,848.98		176,703.25
323 Professional Educational Services – Other Educational Agencies		4,988.00		4,988.00
329 Professional Educational Services – Other	258,496.48	136,983.35	2,214.49	397,694.32
<b>Total Purchased Professional and Technical Services</b>	<b>\$266,350.75</b>	<b>\$310,820.33</b>	<b>\$2,214.49</b>	<b>\$579,385.57</b>
<b>400 <u>Purchased Property Services</u></b>				
430 Repairs and Maintenance Services	3,406.49	7,865.23		11,271.72
440 Rentals	12.59	2,505.87		2,518.46
<b>Total Purchased Property Services</b>	<b>\$3,419.08</b>	<b>\$10,371.10</b>		<b>\$13,790.18</b>
<b>500 <u>Other Purchased Services</u></b>				
510 Student Transportation Services	9,498.59	11,496.75		20,995.34
561 Tuition To Other School Districts Within the State	10,170.05	26,592.47		36,762.52
562 Tuition To Pennsylvania Charter Schools	3,497.45	695,992.63		699,490.08
568 Tuition To Private Residential Rehabilitative Institutions (PRRI) [In-State] and Detention Centers	3,016.10	31,628.31		34,644.41
580 Travel	1,394.55	811.02		2,205.57
<b>Total Other Purchased Services</b>	<b>\$27,576.74</b>	<b>\$766,521.18</b>		<b>\$794,097.92</b>
<b>600 <u>Supplies</u></b>				
610 General Supplies	183,437.32	170,925.10	3,605.51	357,967.93
630 Food	6.27	1,248.62		1,254.89
640 Books and Periodicals	8,814.19	179.70		8,993.89
650 Supplies & Fees – Technology Related	12,011.06	1,004,563.29		1,016,574.35
<b>Total Supplies</b>	<b>\$204,268.84</b>	<b>\$1,176,916.71</b>	<b>\$3,605.51</b>	<b>\$1,384,791.06</b>
<b>800 <u>Other Objects</u></b>				
810 Dues and Fees	664.48	6,064.52		6,729.00
<b>Total Other Objects</b>	<b>\$664.48</b>	<b>\$6,064.52</b>		<b>\$6,729.00</b>
<b>Total 1110 Regular Programs</b>	<b>\$13,996,399.01</b>	<b>\$14,848,426.73</b>	<b>\$12,849.00</b>	<b>\$28,857,674.74</b>

LEA : 113362403     Elizabethtown Area SD

Printed 11/20/2020 7:46:56 AM

General Fund (10)

1190 Federally-Funded Regular Programs	<u>Elementary</u>	<u>Secondary</u>	<u>Federal</u>	<u>Total</u>
<b>100 <u>Personnel Services – Salaries</u></b>				
100 Personnel Services – Salaries			408,875.45	408,875.45
<b>Total Personnel Services – Salaries</b>			<b>\$408,875.45</b>	<b>\$408,875.45</b>
<b>200 <u>Personnel Services – Employee Benefits</u></b>				
210 Group Insurance – Contracted Provider			3,497.41	3,497.41
220 Social Security Contributions			30,500.25	30,500.25
230 PSERS Retirement Contributions			140,203.49	140,203.49
260 Workers' Compensation			2,860.63	2,860.63
270 Group Insurance – Self-Insurance			28,669.88	28,669.88
292 Health Savings Accounts			3,940.17	3,940.17
<b>Total Personnel Services – Employee Benefits</b>			<b>\$209,671.83</b>	<b>\$209,671.83</b>
<b>Total 1190 Federally-Funded Regular Programs</b>			<b>\$618,547.28</b>	<b>\$618,547.28</b>

LEA : 113362403     Elizabethtown Area SD

Printed 11/20/2020 7:46:56 AM

General Fund (10)

1200 Special Programs – Elementary / Secondary	Elementary	Secondary	Federal	Total
<b>100 Personnel Services – Salaries</b>				
100 Personnel Services – Salaries	1,540,836.85	1,797,684.78	233,050.00	3,571,571.63
<b>Total Personnel Services – Salaries</b>	<b>\$1,540,836.85</b>	<b>\$1,797,684.78</b>	<b>\$233,050.00</b>	<b>\$3,571,571.63</b>
<b>200 Personnel Services – Employee Benefits</b>				
210 Group Insurance – Contracted Provider	33,776.93	32,216.66	3,347.56	69,341.15
220 Social Security Contributions	114,921.96	134,557.46	17,266.88	266,746.30
230 PSERS Retirement Contributions	523,959.05	625,617.55	79,912.74	1,229,489.34
260 Workers' Compensation	11,302.77	12,055.46	1,710.85	25,069.08
270 Group Insurance – Self-Insurance	488,004.84	436,149.08	59,263.45	983,417.37
291 Other Retirement Plans	18.09	3,600.03		3,618.12
292 Health Savings Accounts	19,637.30	17,382.70	2,280.00	39,300.00
<b>Total Personnel Services – Employee Benefits</b>	<b>\$1,191,620.94</b>	<b>\$1,261,578.94</b>	<b>\$163,781.48</b>	<b>\$2,616,981.36</b>
<b>300 Purchased Professional and Technical Services</b>				
322 Professional Educational Services – Ius	328,635.14	739,739.65		1,068,374.79
329 Professional Educational Services – Other	236,542.00	236,542.00	203,035.00	676,119.00
330 Other Professional Services	13.53	24,462.18		24,475.71
<b>Total Purchased Professional and Technical Services</b>	<b>\$565,190.67</b>	<b>\$1,000,743.83</b>	<b>\$203,035.00</b>	<b>\$1,768,969.50</b>
<b>400 Purchased Property Services</b>				
440 Rentals	16.89	3,360.51		3,377.40
<b>Total Purchased Property Services</b>	<b>\$16.89</b>	<b>\$3,360.51</b>		<b>\$3,377.40</b>
<b>500 Other Purchased Services</b>				
561 Tuition To Other School Districts Within the State	8,090.60	412,079.31		420,169.91
562 Tuition To Pennsylvania Charter Schools	1,681.38	334,594.91		336,276.29
567 Tuition To Approved Private Schools (APS) and PA Chartered Schools for the Deaf and Blind	105.85	132,512.58		132,618.43
568 Tuition To Private Residential Rehabilitative Institutions (PRRI) [In-State] and Detention Centers	196,506.26	239,375.00		435,881.26
580 Travel	444.36	2,982.13		3,426.49
594 IU Payment By Withholding for Institutionalized Children’s Programs – Special Classes	690.98			690.98
<b>Total Other Purchased Services</b>	<b>\$207,519.43</b>	<b>\$1,121,543.93</b>		<b>\$1,329,063.36</b>
<b>600 Supplies</b>				
610 General Supplies	18,998.37	16,269.38	20,400.61	55,668.36
640 Books and Periodicals	4.65	925.03		929.68
650 Supplies & Fees – Technology Related	14.37	2,860.06		2,874.43
<b>Total Supplies</b>	<b>\$19,017.39</b>	<b>\$20,054.47</b>	<b>\$20,400.61</b>	<b>\$59,472.47</b>
<b>800 Other Objects</b>				
810 Dues and Fees	66.43	7,630.07		7,696.50
<b>Total Other Objects</b>	<b>\$66.43</b>	<b>\$7,630.07</b>		<b>\$7,696.50</b>
<b>Total 1200 Special Programs – Elementary / Secondary</b>	<b>\$3,524,268.60</b>	<b>\$5,212,596.53</b>	<b>\$620,267.09</b>	<b>\$9,357,132.22</b>



LEA : 113362403     Elizabethtown Area SD

Printed 11/20/2020 7:46:56 AM

General Fund (10)

1220 Sensory Support	Elementary	Secondary	Federal	Total
100 <u>Personnel Services – Salaries</u>				
100 Personnel Services – Salaries	269,318.55	99,149.49		368,468.04
<b>Total Personnel Services – Salaries</b>	<b>\$269,318.55</b>	<b>\$99,149.49</b>		<b>\$368,468.04</b>
200 <u>Personnel Services – Employee Benefits</u>				
210 Group Insurance – Contracted Provider	3,200.78	1,608.58		4,809.36
220 Social Security Contributions	20,341.79	7,487.77		27,829.56
230 PSERS Retirement Contributions	92,349.13	33,998.32		126,347.45
260 Workers' Compensation	1,948.68	738.60		2,687.28
270 Group Insurance – Self-Insurance	40,417.44	20,849.65		61,267.09
292 Health Savings Accounts	1,748.00	152.00		1,900.00
<b>Total Personnel Services – Employee Benefits</b>	<b>\$160,005.82</b>	<b>\$64,834.92</b>		<b>\$224,840.74</b>
300 <u>Purchased Professional and Technical Services</u>				
330 Other Professional Services		21,768.75		21,768.75
<b>Total Purchased Professional and Technical Services</b>		<b>\$21,768.75</b>		<b>\$21,768.75</b>
500 <u>Other Purchased Services</u>				
580 Travel	217.28	149.48		366.76
<b>Total Other Purchased Services</b>	<b>\$217.28</b>	<b>\$149.48</b>		<b>\$366.76</b>
600 <u>Supplies</u>				
610 General Supplies	16.75	3,332.36		3,349.11
<b>Total Supplies</b>	<b>\$16.75</b>	<b>\$3,332.36</b>		<b>\$3,349.11</b>
<b>Total 1220 Sensory Support</b>	<b>\$429,558.40</b>	<b>\$189,235.00</b>		<b>\$618,793.40</b>

LEA : 113362403     Elizabethtown Area SD

Printed 11/20/2020 7:46:56 AM

General Fund (10)				
1230 Emotional Support	<u>Elementary</u>	<u>Secondary</u>	<u>Federal</u>	<u>Total</u>
100 <u>Personnel Services – Salaries</u>				
100 Personnel Services – Salaries	452,436.92	434,697.87	66,315.00	953,449.79
<b>Total Personnel Services – Salaries</b>	<b>\$452,436.92</b>	<b>\$434,697.87</b>	<b>\$66,315.00</b>	<b>\$953,449.79</b>
200 <u>Personnel Services – Employee Benefits</u>				
210 Group Insurance – Contracted Provider	16,697.33	7,278.62	1,419.59	25,395.54
220 Social Security Contributions	32,935.14	32,505.25	4,969.60	70,409.99
230 PSERS Retirement Contributions	152,774.70	146,149.98	22,739.31	321,663.99
260 Workers' Compensation	2,914.36	3,325.30	487.38	6,727.04
270 Group Insurance – Self-Insurance	237,491.65	113,668.52	19,754.48	370,914.65
292 Health Savings Accounts	8,747.60	3,792.40	760.00	13,300.00
<b>Total Personnel Services – Employee Benefits</b>	<b>\$451,560.78</b>	<b>\$306,720.07</b>	<b>\$50,130.36</b>	<b>\$808,411.21</b>
500 <u>Other Purchased Services</u>				
580 Travel	212.85			212.85
<b>Total Other Purchased Services</b>	<b>\$212.85</b>			<b>\$212.85</b>
600 <u>Supplies</u>				
610 General Supplies	9,757.92	8,308.30		18,066.22
<b>Total Supplies</b>	<b>\$9,757.92</b>	<b>\$8,308.30</b>		<b>\$18,066.22</b>
<b>Total 1230 Emotional Support</b>	<b>\$913,968.47</b>	<b>\$749,726.24</b>	<b>\$116,445.36</b>	<b>\$1,780,140.07</b>

LEA : 113362403     Elizabethtown Area SD

Printed 11/20/2020 7:46:56 AM

General Fund (10)

1240 Academic Support

	Elementary	Secondary	Federal	Total
<b>100 <u>Personnel Services – Salaries</u></b>				
100 Personnel Services – Salaries	819,081.38	1,263,837.42	166,735.00	2,249,653.80
<b>Total Personnel Services – Salaries</b>	<b>\$819,081.38</b>	<b>\$1,263,837.42</b>	<b>\$166,735.00</b>	<b>\$2,249,653.80</b>
<b>200 <u>Personnel Services – Employee Benefits</u></b>				
210 Group Insurance – Contracted Provider	13,878.82	23,329.46	1,927.97	39,136.25
220 Social Security Contributions	61,645.03	94,564.44	12,297.28	168,506.75
230 PSERS Retirement Contributions	278,835.22	445,469.25	57,173.43	781,477.90
260 Workers' Compensation	6,439.73	7,991.56	1,223.47	15,654.76
270 Group Insurance – Self-Insurance	210,095.75	301,630.91	39,508.97	551,235.63
291 Other Retirement Plans	18.09	3,600.03		3,618.12
292 Health Savings Accounts	9,141.70	13,438.30	1,520.00	24,100.00
<b>Total Personnel Services – Employee Benefits</b>	<b>\$580,054.34</b>	<b>\$890,023.95</b>	<b>\$113,651.12</b>	<b>\$1,583,729.41</b>
<b>300 <u>Purchased Professional and Technical Services</u></b>				
330 Other Professional Services	13.53	2,693.43		2,706.96
<b>Total Purchased Professional and Technical Services</b>	<b>\$13.53</b>	<b>\$2,693.43</b>		<b>\$2,706.96</b>
<b>500 <u>Other Purchased Services</u></b>				
561 Tuition To Other School Districts Within the State	8,090.60	412,079.31		420,169.91
567 Tuition To Approved Private Schools (APS) and PA Chartered Schools for the Deaf and Blind		111,448.50		111,448.50
568 Tuition To Private Residential Rehabilitative Institutions (PRRI) [In-State] and Detention Centers	196,506.26	239,375.00		435,881.26
580 Travel	14.23	2,832.65		2,846.88
<b>Total Other Purchased Services</b>	<b>\$204,611.09</b>	<b>\$765,735.46</b>		<b>\$970,346.55</b>
<b>600 <u>Supplies</u></b>				
610 General Supplies	9,223.70	4,628.72	20,400.61	34,253.03
640 Books and Periodicals	4.65	925.03		929.68
650 Supplies & Fees – Technology Related	14.37	2,860.06		2,874.43
<b>Total Supplies</b>	<b>\$9,242.72</b>	<b>\$8,413.81</b>	<b>\$20,400.61</b>	<b>\$38,057.14</b>
<b>800 <u>Other Objects</u></b>				
810 Dues and Fees	44.00	3,166.00		3,210.00
<b>Total Other Objects</b>	<b>\$44.00</b>	<b>\$3,166.00</b>		<b>\$3,210.00</b>
<b>Total 1240 Academic Support</b>	<b>\$1,613,047.06</b>	<b>\$2,933,870.07</b>	<b>\$300,786.73</b>	<b>\$4,847,703.86</b>

LEA : 113362403     Elizabethtown Area SD

Printed 11/20/2020 7:46:56 AM

General Fund (10)

1241 Learning Support – Public	Elementary	Secondary	Federal	Total
100 <u>Personnel Services – Salaries</u>				
100 Personnel Services – Salaries	778,112.99	964,353.76	166,735.00	1,909,201.75
<b>Total Personnel Services – Salaries</b>	<b>\$778,112.99</b>	<b>\$964,353.76</b>	<b>\$166,735.00</b>	<b>\$1,909,201.75</b>
200 <u>Personnel Services – Employee Benefits</u>				
210 Group Insurance – Contracted Provider	13,042.12	18,323.08	1,927.97	33,293.17
220 Social Security Contributions	58,524.40	72,173.55	12,297.28	142,995.23
230 PSERS Retirement Contributions	264,787.12	329,950.41	57,173.43	651,910.96
260 Workers' Compensation	6,136.59	6,713.66	1,223.47	14,073.72
270 Group Insurance – Self-Insurance	210,095.75	236,776.18	39,508.97	486,380.90
291 Other Retirement Plans	18.09	3,600.03		3,618.12
292 Health Savings Accounts	9,141.70	12,298.30	1,520.00	22,960.00
<b>Total Personnel Services – Employee Benefits</b>	<b>\$561,745.77</b>	<b>\$679,835.21</b>	<b>\$113,651.12</b>	<b>\$1,355,232.10</b>
300 <u>Purchased Professional and Technical Services</u>				
330 Other Professional Services	13.53	2,693.43		2,706.96
<b>Total Purchased Professional and Technical Services</b>	<b>\$13.53</b>	<b>\$2,693.43</b>		<b>\$2,706.96</b>
500 <u>Other Purchased Services</u>				
561 Tuition To Other School Districts Within the State	8,090.60	412,079.31		420,169.91
567 Tuition To Approved Private Schools (APS) and PA Chartered Schools for the Deaf and Blind		111,448.50		111,448.50
568 Tuition To Private Residential Rehabilitative Institutions (PRRI) [In-State] and Detention Centers	196,506.26	239,375.00		435,881.26
580 Travel	13.25	2,637.15		2,650.40
<b>Total Other Purchased Services</b>	<b>\$204,610.11</b>	<b>\$765,539.96</b>		<b>\$970,150.07</b>
600 <u>Supplies</u>				
610 General Supplies	7,989.55	4,628.72	20,400.61	33,018.88
640 Books and Periodicals	4.65	925.03		929.68
650 Supplies & Fees – Technology Related	14.37	2,860.06		2,874.43
<b>Total Supplies</b>	<b>\$8,008.57</b>	<b>\$8,413.81</b>	<b>\$20,400.61</b>	<b>\$36,822.99</b>
<b>Total 1241 Learning Support – Public</b>	<b>\$1,552,490.97</b>	<b>\$2,420,836.17</b>	<b>\$300,786.73</b>	<b>\$4,274,113.87</b>

LEA : 113362403     Elizabethtown Area SD

Printed 11/20/2020 7:46:56 AM

<b>General Fund (10)</b>				
<b>1243 Gifted Support</b>	<u>Elementary</u>	<u>Secondary</u>	<u>Federal</u>	<u>Total</u>
<b>100 <u>Personnel Services – Salaries</u></b>				
100 Personnel Services – Salaries	40,968.39	299,483.66		340,452.05
<b>Total Personnel Services – Salaries</b>	<b>\$40,968.39</b>	<b>\$299,483.66</b>		<b>\$340,452.05</b>
<b>200 <u>Personnel Services – Employee Benefits</u></b>				
210 Group Insurance – Contracted Provider	836.70	5,006.38		5,843.08
220 Social Security Contributions	3,120.63	22,390.89		25,511.52
230 PSERS Retirement Contributions	14,048.10	115,518.84		129,566.94
260 Workers' Compensation	303.14	1,277.90		1,581.04
270 Group Insurance – Self-Insurance		64,854.73		64,854.73
292 Health Savings Accounts		1,140.00		1,140.00
<b>Total Personnel Services – Employee Benefits</b>	<b>\$18,308.57</b>	<b>\$210,188.74</b>		<b>\$228,497.31</b>
<b>500 <u>Other Purchased Services</u></b>				
580 Travel	0.98	195.50		196.48
<b>Total Other Purchased Services</b>	<b>\$0.98</b>	<b>\$195.50</b>		<b>\$196.48</b>
<b>600 <u>Supplies</u></b>				
610 General Supplies	1,234.15			1,234.15
<b>Total Supplies</b>	<b>\$1,234.15</b>			<b>\$1,234.15</b>
<b>800 <u>Other Objects</u></b>				
810 Dues and Fees	44.00	3,166.00		3,210.00
<b>Total Other Objects</b>	<b>\$44.00</b>	<b>\$3,166.00</b>		<b>\$3,210.00</b>
<b>Total 1243 Gifted Support</b>	<b>\$60,556.09</b>	<b>\$513,033.90</b>		<b>\$573,589.99</b>

LEA : 113362403     Elizabethtown Area SD

Printed 11/20/2020 7:46:56 AM

General Fund (10)

1290 Special Programs - Other Support	Elementary	Secondary	Federal	Total
<b>300 <u>Purchased Professional and Technical Services</u></b>				
322 Professional Educational Services – Ius	328,635.14	739,739.65		1,068,374.79
329 Professional Educational Services – Other	236,542.00	236,542.00	203,035.00	676,119.00
<b>Total Purchased Professional and Technical Services</b>	<b>\$565,177.14</b>	<b>\$976,281.65</b>	<b>\$203,035.00</b>	<b>\$1,744,493.79</b>
<b>400 <u>Purchased Property Services</u></b>				
440 Rentals	16.89	3,360.51		3,377.40
<b>Total Purchased Property Services</b>	<b>\$16.89</b>	<b>\$3,360.51</b>		<b>\$3,377.40</b>
<b>500 <u>Other Purchased Services</u></b>				
562 Tuition To Pennsylvania Charter Schools	1,681.38	334,594.91		336,276.29
567 Tuition To Approved Private Schools (APS) and PA Chartered Schools for the Deaf and Blind	105.85	21,064.08		21,169.93
594 IU Payment By Withholding for Institutionalized Children's Programs – Special Classes	690.98			690.98
<b>Total Other Purchased Services</b>	<b>\$2,478.21</b>	<b>\$355,658.99</b>		<b>\$358,137.20</b>
<b>800 <u>Other Objects</u></b>				
810 Dues and Fees	22.43	4,464.07		4,486.50
<b>Total Other Objects</b>	<b>\$22.43</b>	<b>\$4,464.07</b>		<b>\$4,486.50</b>
<b>Total 1290 Special Programs - Other Support</b>	<b>\$567,694.67</b>	<b>\$1,339,765.22</b>	<b>\$203,035.00</b>	<b>\$2,110,494.89</b>

LEA : 113362403     Elizabethtown Area SD

Printed 11/20/2020 7:46:56 AM

General Fund (10)				
1300 Vocational Education	<u>Elementary</u>	<u>Secondary</u>	<u>Federal</u>	<u>Total</u>
100 <u>Personnel Services – Salaries</u>				
100 Personnel Services – Salaries		209,717.15		209,717.15
Total Personnel Services – Salaries		\$209,717.15		\$209,717.15
200 <u>Personnel Services – Employee Benefits</u>				
210 Group Insurance – Contracted Provider		3,434.76		3,434.76
220 Social Security Contributions		15,480.42		15,480.42
230 PSERS Retirement Contributions		71,912.17		71,912.17
260 Workers' Compensation		6,054.57		6,054.57
270 Group Insurance – Self-Insurance		48,715.05		48,715.05
292 Health Savings Accounts		7,220.00		7,220.00
Total Personnel Services – Employee Benefits		\$152,816.97		\$152,816.97
300 <u>Purchased Professional and Technical Services</u>				
329 Professional Educational Services – Other		2,410.00		2,410.00
Total Purchased Professional and Technical Services		\$2,410.00		\$2,410.00
400 <u>Purchased Property Services</u>				
440 Rentals		70,675.57		70,675.57
Total Purchased Property Services		\$70,675.57		\$70,675.57
500 <u>Other Purchased Services</u>				
564 Tuition To Career and Technology Centers		890,354.92		890,354.92
Total Other Purchased Services		\$890,354.92		\$890,354.92
600 <u>Supplies</u>				
610 General Supplies		29,882.21		29,882.21
Total Supplies		\$29,882.21		\$29,882.21
Total 1300 Vocational Education		\$1,355,856.82		\$1,355,856.82

LEA : 113362403     Elizabethtown Area SD

Printed 11/20/2020 7:46:56 AM

General Fund (10)				
1400 Other Instructional Programs – Elementary / Secondary	<u>Elementary</u>	<u>Secondary</u>	<u>Federal</u>	<u>Total</u>
100 <u>Personnel Services – Salaries</u>				
100 Personnel Services – Salaries	2,388.68	85,056.04		87,444.72
Total Personnel Services – Salaries	\$2,388.68	\$85,056.04		\$87,444.72
200 <u>Personnel Services – Employee Benefits</u>				
210 Group Insurance – Contracted Provider		994.52		994.52
220 Social Security Contributions	178.14	6,397.20		6,575.34
230 PSERS Retirement Contributions	819.08	29,165.74		29,984.82
260 Workers' Compensation		603.77		603.77
270 Group Insurance – Self-Insurance		14,781.92		14,781.92
292 Health Savings Accounts		760.00		760.00
Total Personnel Services – Employee Benefits	\$997.22	\$52,703.15		\$53,700.37
300 <u>Purchased Professional and Technical Services</u>				
329 Professional Educational Services – Other	25,371.20	28,343.87		53,715.07
Total Purchased Professional and Technical Services	\$25,371.20	\$28,343.87		\$53,715.07
500 <u>Other Purchased Services</u>				
561 Tuition To Other School Districts Within the State		4,135.89		4,135.89
567 Tuition To Approved Private Schools (APS) and PA Chartered Schools for the Deaf and Blind		111,037.00		111,037.00
Total Other Purchased Services		\$115,172.89		\$115,172.89
600 <u>Supplies</u>				
610 General Supplies		71.45		71.45
Total Supplies		\$71.45		\$71.45
Total 1400 Other Instructional Programs – Elementary / Secondary	\$28,757.10	\$281,347.40		\$310,104.50



LEA : 113362403     Elizabethtown Area SD

Printed 11/20/2020 7:46:56 AM

General Fund (10)

1430 Homebound Instruction	<u>Elementary</u>	<u>Secondary</u>	<u>Federal</u>	<u>Total</u>
<b>100 <u>Personnel Services – Salaries</u></b>				
100 Personnel Services – Salaries	2,388.68	1,050.96		3,439.64
<b>Total Personnel Services – Salaries</b>	<b>\$2,388.68</b>	<b>\$1,050.96</b>		<b>\$3,439.64</b>
<b>200 <u>Personnel Services – Employee Benefits</u></b>				
220 Social Security Contributions	178.14	74.94		253.08
230 PSERS Retirement Contributions	819.08	360.38		1,179.46
<b>Total Personnel Services – Employee Benefits</b>	<b>\$997.22</b>	<b>\$435.32</b>		<b>\$1,432.54</b>
<b>300 <u>Purchased Professional and Technical Services</u></b>				
329 Professional Educational Services – Other	1,083.70	4,056.37		5,140.07
<b>Total Purchased Professional and Technical Services</b>	<b>\$1,083.70</b>	<b>\$4,056.37</b>		<b>\$5,140.07</b>
<b>Total 1430 Homebound Instruction</b>	<b>\$4,469.60</b>	<b>\$5,542.65</b>		<b>\$10,012.25</b>

LEA : 113362403     Elizabethtown Area SD

Printed 11/20/2020 7:46:56 AM

General Fund (10)				
1440 Alternative Regular Education Programs	<u>Elementary</u>	<u>Secondary</u>	<u>Federal</u>	<u>Total</u>
100 <u>Personnel Services – Salaries</u>				
100 Personnel Services – Salaries		84,005.08		84,005.08
Total Personnel Services – Salaries		\$84,005.08		\$84,005.08
200 <u>Personnel Services – Employee Benefits</u>				
210 Group Insurance – Contracted Provider		994.52		994.52
220 Social Security Contributions		6,322.26		6,322.26
230 PSERS Retirement Contributions		28,805.36		28,805.36
260 Workers' Compensation		603.77		603.77
270 Group Insurance – Self-Insurance		14,781.92		14,781.92
292 Health Savings Accounts		760.00		760.00
Total Personnel Services – Employee Benefits		\$52,267.83		\$52,267.83
300 <u>Purchased Professional and Technical Services</u>				
329 Professional Educational Services – Other	24,287.50	24,287.50		48,575.00
Total Purchased Professional and Technical Services	\$24,287.50	\$24,287.50		\$48,575.00
500 <u>Other Purchased Services</u>				
561 Tuition To Other School Districts Within the State		4,135.89		4,135.89
567 Tuition To Approved Private Schools (APS) and PA Chartered Schools for the Deaf and Blind		111,037.00		111,037.00
Total Other Purchased Services		\$115,172.89		\$115,172.89
600 <u>Supplies</u>				
610 General Supplies		71.45		71.45
Total Supplies		\$71.45		\$71.45
Total 1440 Alternative Regular Education Programs	\$24,287.50	\$275,804.75		\$300,092.25

LEA : 113362403     Elizabethtown Area SD

Printed 11/20/2020 7:46:56 AM

General Fund (10)

1441 Adjudicated / Court-Placed Programs

<u>Elementary</u>	<u>Secondary</u>	<u>Federal</u>	<u>Total</u>
-------------------	------------------	----------------	--------------

500 Other Purchased Services

561 Tuition To Other School Districts Within the State	4,135.89		4,135.89
--	----------	--	----------

<b>Total Other Purchased Services</b>	<b>\$4,135.89</b>		<b>\$4,135.89</b>
---------------------------------------	-------------------	--	-------------------

<b>Total 1441 Adjudicated / Court-Placed Programs</b>	<b>\$4,135.89</b>		<b>\$4,135.89</b>
---	-------------------	--	-------------------

LEA : 113362403     Elizabethtown Area SD

Printed 11/20/2020 7:46:56 AM

General Fund (10)

1442 Alternative Education Programs	Elementary	Secondary	Federal	Total
100 <u>Personnel Services – Salaries</u>				
100 Personnel Services – Salaries		84,005.08		84,005.08
<b>Total Personnel Services – Salaries</b>		<b>\$84,005.08</b>		<b>\$84,005.08</b>
200 <u>Personnel Services – Employee Benefits</u>				
210 Group Insurance – Contracted Provider		994.52		994.52
220 Social Security Contributions		6,322.26		6,322.26
230 PSERS Retirement Contributions		28,805.36		28,805.36
260 Workers' Compensation		603.77		603.77
270 Group Insurance – Self-Insurance		14,781.92		14,781.92
292 Health Savings Accounts		760.00		760.00
<b>Total Personnel Services – Employee Benefits</b>		<b>\$52,267.83</b>		<b>\$52,267.83</b>
300 <u>Purchased Professional and Technical Services</u>				
329 Professional Educational Services – Other	24,287.50	24,287.50		48,575.00
<b>Total Purchased Professional and Technical Services</b>	<b>\$24,287.50</b>	<b>\$24,287.50</b>		<b>\$48,575.00</b>
500 <u>Other Purchased Services</u>				
567 Tuition To Approved Private Schools (APS) and PA Chartered Schools for the Deaf and Blind		111,037.00		111,037.00
<b>Total Other Purchased Services</b>		<b>\$111,037.00</b>		<b>\$111,037.00</b>
600 <u>Supplies</u>				
610 General Supplies		71.45		71.45
<b>Total Supplies</b>		<b>\$71.45</b>		<b>\$71.45</b>
<b>Total 1442 Alternative Education Programs</b>	<b>\$24,287.50</b>	<b>\$271,668.86</b>		<b>\$295,956.36</b>

LEA : 113362403     Elizabethtown Area SD

Printed 11/20/2020 7:46:56 AM

General Fund (10)

1500 Nonpublic School Programs

	<u>Elementary</u>	<u>Secondary</u>	<u>Federal</u>	<u>Total</u>
<b>300 <u>Purchased Professional and Technical Services</u></b>				
322 Professional Educational Services – Ius			16,330.56	16,330.56
360 Employee Training and Development Services			4,175.00	4,175.00
<b>Total Purchased Professional and Technical Services</b>			<b>\$20,505.56</b>	<b>\$20,505.56</b>
<b>600 <u>Supplies</u></b>				
610 General Supplies			9,277.27	9,277.27
<b>Total Supplies</b>			<b>\$9,277.27</b>	<b>\$9,277.27</b>
<b>Total 1500 Nonpublic School Programs</b>			<b>\$29,782.83</b>	<b>\$29,782.83</b>

LEA : 113362403     Elizabethtown Area SD

Printed 11/20/2020 7:47:09 AM

General Fund (10)

2000 Support Services

Total

100	<u>Personnel Services – Salaries</u>	
100	Personnel Services – Salaries	7,181,447.73
Total Personnel Services – Salaries		\$7,181,447.73
200	<u>Personnel Services – Employee Benefits</u>	
210	Group Insurance – Contracted Provider	138,622.07
220	Social Security Contributions	533,276.78
230	PSERS Retirement Contributions	2,424,731.54
240	Tuition Reimbursement	378,228.45
250	Unemployment Compensation	4,716.20
260	Workers' Compensation	56,901.24
270	Group Insurance – Self-Insurance	1,730,304.46
291	Other Retirement Plans	81,438.33
292	Health Savings Accounts	71,075.62
299	All Other Employee Benefits	9,914.16
Total Personnel Services – Employee Benefits		\$5,429,208.85
300	<u>Purchased Professional and Technical Services</u>	
310	Official / Administrative Services	92,341.52
330	Other Professional Services	143,607.08
340	Technical Services	2,449.88
350	Security / Safety Services	63,330.75
360	Employee Training and Development Services	164,437.64
Total Purchased Professional and Technical Services		\$466,166.87
400	<u>Purchased Property Services</u>	
410	Cleaning Services	278,724.86
420	Utility Services	61,553.52
430	Repairs and Maintenance Services	345,591.61
440	Rentals	147,651.41
460	Extermination Services	7,085.30
490	Other Purchased Property Services	5,705.68
Total Purchased Property Services		\$846,312.38
500	<u>Other Purchased Services</u>	
513	Contracted Carriers	1,990,524.00
516	Student Transportation Services From the IU	176,862.69
523	General Property and Liability Insurance	232,529.00
530	Communications	95,447.44
549	Other Advertising/Public Relations	8,588.46
550	Printing and Binding	19,855.24
580	Travel	23,016.78
595	IU Payments By Withholding	25,495.06
Total Other Purchased Services		\$2,572,318.67
600	<u>Supplies</u>	
610	General Supplies	401,179.60
620	Energy	671,447.48
630	Food	13,873.52

LEA : 113362403     Elizabethtown Area SD

Printed 11/20/2020 7:47:09 AM

General Fund (10)

2000 Support Services

Total

600 <u>Supplies</u>	
640 Books and Periodicals	28,354.38
650 Supplies & Fees – Technology Related	258,035.34
<b>Total Supplies</b>	<b>\$1,372,890.32</b>
800 <u>Other Objects</u>	
810 Dues and Fees	71,050.26
<b>Total Other Objects</b>	<b>\$71,050.26</b>
<b>Total 2000 Support Services</b>	<b>\$17,939,395.08</b>

LEA : 113362403     Elizabethtown Area SD

Printed 11/20/2020 7:47:09 AM

General Fund (10)

2100 Support Services – Students	Elementary	Secondary	Federal	Total
100 <u>Personnel Services – Salaries</u>				
100 Personnel Services – Salaries	375,200.21	850,177.46		1,459,175.65
<b>Total Personnel Services – Salaries</b>	<b>\$375,200.21</b>	<b>\$850,177.46</b>		<b>\$1,459,175.65</b>
200 <u>Personnel Services – Employee Benefits</u>				
210 Group Insurance – Contracted Provider	4,141.18	14,777.64		23,929.33
220 Social Security Contributions	28,316.84	62,448.27		108,320.90
230 PSERS Retirement Contributions	128,656.20	288,547.28		497,373.00
260 Workers' Compensation	2,712.23	6,024.60		10,448.53
270 Group Insurance – Self-Insurance	55,729.81	154,565.71		274,870.97
292 Health Savings Accounts	2,291.40	7,208.60		11,400.00
<b>Total Personnel Services – Employee Benefits</b>	<b>\$221,847.66</b>	<b>\$533,572.10</b>		<b>\$926,342.73</b>
300 <u>Purchased Professional and Technical Services</u>				
330 Other Professional Services	228.44	45,459.06	3,348.00	49,035.50
<b>Total Purchased Professional and Technical Services</b>	<b>\$228.44</b>	<b>\$45,459.06</b>	<b>\$3,348.00</b>	<b>\$49,035.50</b>
500 <u>Other Purchased Services</u>				
580 Travel	383.93	2,125.24		3,383.12
<b>Total Other Purchased Services</b>	<b>\$383.93</b>	<b>\$2,125.24</b>		<b>\$3,383.12</b>
600 <u>Supplies</u>				
610 General Supplies	1,811.96	9,220.71		13,227.90
640 Books and Periodicals	0.76	295.56		296.32
650 Supplies & Fees – Technology Related	39.88	7,936.12	13,737.38	21,713.38
<b>Total Supplies</b>	<b>\$1,852.60</b>	<b>\$17,452.39</b>	<b>\$13,737.38</b>	<b>\$35,237.60</b>
800 <u>Other Objects</u>				
810 Dues and Fees	4.87	1,793.13		1,798.00
<b>Total Other Objects</b>	<b>\$4.87</b>	<b>\$1,793.13</b>		<b>\$1,798.00</b>
<b>Total 2100 Support Services – Students</b>	<b>\$599,517.71</b>	<b>\$1,450,579.38</b>	<b>\$17,085.38</b>	<b>\$2,474,972.60</b>



LEA : 113362403     Elizabethtown Area SD

Printed 11/20/2020 7:47:09 AM

General Fund (10)				
2110 Supervision of Student Services	<u>Elementary</u>	<u>Secondary</u>	<u>Federal</u>	<u>Total</u>
500 <u>Other Purchased Services</u>				
580 Travel	5.64	1,122.58		1,128.22
Total Other Purchased Services	\$5.64	\$1,122.58		\$1,128.22
600 <u>Supplies</u>				
640 Books and Periodicals	0.76	152.00		152.76
Total Supplies	\$0.76	\$152.00		\$152.76
800 <u>Other Objects</u>				
810 Dues and Fees	4.87	969.13		974.00
Total Other Objects	\$4.87	\$969.13		\$974.00
Total 2110 Supervision of Student Services	\$11.27	\$2,243.71		\$2,254.98

LEA : 113362403     Elizabethtown Area SD

Printed 11/20/2020 7:47:09 AM

General Fund (10)				
2111 Supervision of Student Services – Head of Component	<u>Elementary</u>	<u>Secondary</u>	<u>Federal</u>	<u>Total</u>
500 <u>Other Purchased Services</u>				
580 Travel	5.64	1,122.58		1,128.22
Total Other Purchased Services	\$5.64	\$1,122.58		\$1,128.22
600 <u>Supplies</u>				
640 Books and Periodicals	0.76	152.00		152.76
Total Supplies	\$0.76	\$152.00		\$152.76
800 <u>Other Objects</u>				
810 Dues and Fees	4.87	969.13		974.00
Total Other Objects	\$4.87	\$969.13		\$974.00
Total 2111 Supervision of Student Services – Head of Component	\$11.27	\$2,243.71		\$2,254.98

LEA : 113362403     Elizabethtown Area SD

Printed 11/20/2020 7:47:09 AM

General Fund (10)

2120 Guidance Services	Elementary	Secondary	Federal	Total
100 <u>Personnel Services – Salaries</u>				
100 Personnel Services – Salaries	373,566.55	525,078.54		898,645.09
<b>Total Personnel Services – Salaries</b>	<b>\$373,566.55</b>	<b>\$525,078.54</b>		<b>\$898,645.09</b>
200 <u>Personnel Services – Employee Benefits</u>				
210 Group Insurance – Contracted Provider	4,117.29	10,023.85		14,141.14
220 Social Security Contributions	28,196.02	38,405.49		66,601.51
230 PSERS Retirement Contributions	128,096.02	177,070.50		305,166.52
260 Workers' Compensation	2,700.69	3,727.37		6,428.06
270 Group Insurance – Self-Insurance	55,403.52	89,634.76		145,038.28
292 Health Savings Accounts	2,280.00	4,940.00		7,220.00
<b>Total Personnel Services – Employee Benefits</b>	<b>\$220,793.54</b>	<b>\$323,801.97</b>		<b>\$544,595.51</b>
300 <u>Purchased Professional and Technical Services</u>				
330 Other Professional Services	74.69	14,862.81		14,937.50
<b>Total Purchased Professional and Technical Services</b>	<b>\$74.69</b>	<b>\$14,862.81</b>		<b>\$14,937.50</b>
500 <u>Other Purchased Services</u>				
580 Travel	373.25			373.25
<b>Total Other Purchased Services</b>	<b>\$373.25</b>			<b>\$373.25</b>
600 <u>Supplies</u>				
610 General Supplies	1,780.12	2,884.41		4,664.53
640 Books and Periodicals		143.56		143.56
650 Supplies & Fees – Technology Related	39.88	7,936.12		7,976.00
<b>Total Supplies</b>	<b>\$1,820.00</b>	<b>\$10,964.09</b>		<b>\$12,784.09</b>
800 <u>Other Objects</u>				
810 Dues and Fees		824.00		824.00
<b>Total Other Objects</b>		<b>\$824.00</b>		<b>\$824.00</b>
<b>Total 2120 Guidance Services</b>	<b>\$596,628.03</b>	<b>\$875,531.41</b>		<b>\$1,472,159.44</b>

LEA : 113362403     Elizabethtown Area SD

Printed 11/20/2020 7:47:09 AM

General Fund (10)

2130 Attendance Services

	<u>Elementary</u>	<u>Secondary</u>	<u>Federal</u>	<u>Total</u>
100 <u>Personnel Services – Salaries</u>				
100 Personnel Services – Salaries				8,544.85
<b>Total Personnel Services – Salaries</b>				<b>\$8,544.85</b>
200 <u>Personnel Services – Employee Benefits</u>				
210 Group Insurance – Contracted Provider				372.54
220 Social Security Contributions				653.67
230 PSERS Retirement Contributions				2,930.01
260 Workers' Compensation				170.00
<b>Total Personnel Services – Employee Benefits</b>				<b>\$4,126.22</b>
<b>Total 2130 Attendance Services</b>				<b>\$12,671.07</b>

LEA : 113362403     Elizabethtown Area SD

Printed 11/20/2020 7:47:09 AM

General Fund (10)

2140 Psychological Services	Elementary	Secondary	Federal	Total
100 <u>Personnel Services – Salaries</u>				
100 Personnel Services – Salaries	1,633.66	325,098.92		326,732.58
<b>Total Personnel Services – Salaries</b>	<b>\$1,633.66</b>	<b>\$325,098.92</b>		<b>\$326,732.58</b>
200 <u>Personnel Services – Employee Benefits</u>				
210 Group Insurance – Contracted Provider	23.89	4,753.79		4,777.68
220 Social Security Contributions	120.82	24,042.78		24,163.60
230 PSERS Retirement Contributions	560.18	111,476.78		112,036.96
260 Workers' Compensation	11.54	2,297.23		2,308.77
270 Group Insurance – Self-Insurance	326.29	64,930.95		65,257.24
292 Health Savings Accounts	11.40	2,268.60		2,280.00
<b>Total Personnel Services – Employee Benefits</b>	<b>\$1,054.12</b>	<b>\$209,770.13</b>		<b>\$210,824.25</b>
300 <u>Purchased Professional and Technical Services</u>				
330 Other Professional Services	28.75	5,721.25	3,348.00	9,098.00
<b>Total Purchased Professional and Technical Services</b>	<b>\$28.75</b>	<b>\$5,721.25</b>	<b>\$3,348.00</b>	<b>\$9,098.00</b>
500 <u>Other Purchased Services</u>				
580 Travel	5.04	1,002.66		1,007.70
<b>Total Other Purchased Services</b>	<b>\$5.04</b>	<b>\$1,002.66</b>		<b>\$1,007.70</b>
600 <u>Supplies</u>				
610 General Supplies	31.84	6,336.30		6,368.14
650 Supplies & Fees – Technology Related			13,737.38	13,737.38
<b>Total Supplies</b>	<b>\$31.84</b>	<b>\$6,336.30</b>	<b>\$13,737.38</b>	<b>\$20,105.52</b>
<b>Total 2140 Psychological Services</b>	<b>\$2,753.41</b>	<b>\$547,929.26</b>	<b>\$17,085.38</b>	<b>\$567,768.05</b>

LEA : 113362403     Elizabethtown Area SD

Printed 11/20/2020 7:47:09 AM

General Fund (10)				
2160 Social Work Services	<u>Elementary</u>	<u>Secondary</u>	<u>Federal</u>	<u>Total</u>
100 <u>Personnel Services – Salaries</u>				
100 Personnel Services – Salaries				105,111.37
Total Personnel Services – Salaries				\$105,111.37
200 <u>Personnel Services – Employee Benefits</u>				
210 Group Insurance – Contracted Provider				1,962.63
220 Social Security Contributions				7,910.16
230 PSERS Retirement Contributions				36,042.83
260 Workers' Compensation				670.78
270 Group Insurance – Self-Insurance				27,150.21
292 Health Savings Accounts				760.00
Total Personnel Services – Employee Benefits				\$74,496.61
600 <u>Supplies</u>				
610 General Supplies				2,195.23
Total Supplies				\$2,195.23
Total 2160 Social Work Services				\$181,803.21

LEA : 113362403     Elizabethtown Area SD

Printed 11/20/2020 7:47:09 AM

General Fund (10)				
2170 Student Accounting Services	<u>Elementary</u>	<u>Secondary</u>	<u>Federal</u>	<u>Total</u>
100 <u>Personnel Services – Salaries</u>				
100 Personnel Services – Salaries				120,141.76
Total Personnel Services – Salaries				\$120,141.76
200 <u>Personnel Services – Employee Benefits</u>				
210 Group Insurance – Contracted Provider				2,675.34
220 Social Security Contributions				8,991.96
230 PSERS Retirement Contributions				41,196.68
260 Workers' Compensation				870.92
270 Group Insurance – Self-Insurance				37,425.24
292 Health Savings Accounts				1,140.00
Total Personnel Services – Employee Benefits				\$92,300.14
500 <u>Other Purchased Services</u>				
580 Travel				873.95
Total Other Purchased Services				\$873.95
Total 2170 Student Accounting Services				\$213,315.85

LEA : 113362403     Elizabethtown Area SD

Printed 11/20/2020 7:47:09 AM

General Fund (10)

2190 Other Student Services

	<u>Elementary</u>	<u>Secondary</u>	<u>Federal</u>	<u>Total</u>
300 <u>Purchased Professional and Technical Services</u>				
330 Other Professional Services	125.00	24,875.00		25,000.00
<b>Total Purchased Professional and Technical Services</b>	<b>\$125.00</b>	<b>\$24,875.00</b>		<b>\$25,000.00</b>
<b>Total 2190 Other Student Services</b>	<b>\$125.00</b>	<b>\$24,875.00</b>		<b>\$25,000.00</b>



LEA : 113362403     Elizabethtown Area SD

Printed 11/20/2020 7:47:09 AM

General Fund (10)

2200 Support Services – Instructional Staff	Elementary	Secondary	Federal	Total
100 <u>Personnel Services – Salaries</u>				
100 Personnel Services – Salaries	191,608.99	93,578.78		285,187.77
<b>Total Personnel Services – Salaries</b>	<b>\$191,608.99</b>	<b>\$93,578.78</b>		<b>\$285,187.77</b>
200 <u>Personnel Services – Employee Benefits</u>				
210 Group Insurance – Contracted Provider	2,649.22	1,428.95		4,078.17
220 Social Security Contributions	14,268.63	7,028.53		21,297.16
230 PSERS Retirement Contributions	65,772.08	32,088.21		97,860.29
240 Tuition Reimbursement	183,635.68	194,592.77		378,228.45
260 Workers' Compensation	1,408.54	611.32		2,019.86
270 Group Insurance – Self-Insurance	35,341.52	19,754.48		55,096.00
292 Health Savings Accounts	1,520.00	760.00		2,280.00
<b>Total Personnel Services – Employee Benefits</b>	<b>\$304,595.67</b>	<b>\$256,264.26</b>		<b>\$560,859.93</b>
300 <u>Purchased Professional and Technical Services</u>				
330 Other Professional Services	15.08	3,000.24		3,015.32
360 Employee Training and Development Services	826.91	141,463.86		142,290.77
<b>Total Purchased Professional and Technical Services</b>	<b>\$841.99</b>	<b>\$144,464.10</b>		<b>\$145,306.09</b>
500 <u>Other Purchased Services</u>				
580 Travel	21.23	4,621.73		4,642.96
<b>Total Other Purchased Services</b>	<b>\$21.23</b>	<b>\$4,621.73</b>		<b>\$4,642.96</b>
600 <u>Supplies</u>				
610 General Supplies	1,574.40	11,566.77		13,141.17
630 Food	6.86	1,365.74		1,372.60
640 Books and Periodicals	18,639.76	7,975.63		26,615.39
650 Supplies & Fees – Technology Related	92.63	18,728.41	4,183.78	23,004.82
<b>Total Supplies</b>	<b>\$20,313.65</b>	<b>\$39,636.55</b>	<b>\$4,183.78</b>	<b>\$64,133.98</b>
<b>Total 2200 Support Services – Instructional Staff</b>	<b>\$517,381.53</b>	<b>\$538,565.42</b>	<b>\$4,183.78</b>	<b>\$1,060,130.73</b>

LEA : 113362403     Elizabethtown Area SD

Printed 11/20/2020 7:47:09 AM

General Fund (10)

2220 Technology Support Services	<u>Elementary</u>	<u>Secondary</u>	<u>Federal</u>	<u>Total</u>
600 <u>Supplies</u>				
650 Supplies & Fees – Technology Related			4,183.78	4,183.78
Total Supplies			\$4,183.78	\$4,183.78
Total 2220 Technology Support Services			\$4,183.78	\$4,183.78

LEA : 113362403     Elizabethtown Area SD

Printed 11/20/2020 7:47:09 AM

General Fund (10)				
2250 School Library Services	Elementary	Secondary	Federal	Total
<b>100 Personnel Services – Salaries</b>				
100 Personnel Services – Salaries	183,221.95	74,575.00		257,796.95
<b>Total Personnel Services – Salaries</b>	<b>\$183,221.95</b>	<b>\$74,575.00</b>		<b>\$257,796.95</b>
<b>200 Personnel Services – Employee Benefits</b>				
210 Group Insurance – Contracted Provider	2,649.22	1,428.95		4,078.17
220 Social Security Contributions	13,647.83	5,622.00		19,269.83
230 PSERS Retirement Contributions	62,896.18	25,571.76		88,467.94
260 Workers' Compensation	1,408.54	611.32		2,019.86
270 Group Insurance – Self-Insurance	35,341.52	19,754.48		55,096.00
292 Health Savings Accounts	1,520.00	760.00		2,280.00
<b>Total Personnel Services – Employee Benefits</b>	<b>\$117,463.29</b>	<b>\$53,748.51</b>		<b>\$171,211.80</b>
<b>600 Supplies</b>				
610 General Supplies	1,544.87	5,690.27		7,235.14
640 Books and Periodicals	18,639.76	6,486.63		25,126.39
650 Supplies & Fees – Technology Related	92.63	18,728.41		18,821.04
<b>Total Supplies</b>	<b>\$20,277.26</b>	<b>\$30,905.31</b>		<b>\$51,182.57</b>
<b>Total 2250 School Library Services</b>	<b>\$320,962.50</b>	<b>\$159,228.82</b>		<b>\$480,191.32</b>

LEA : 113362403     Elizabethtown Area SD

Printed 11/20/2020 7:47:09 AM

General Fund (10)				
2260 Instruction and Curriculum Development Services	<u>Elementary</u>	<u>Secondary</u>	<u>Federal</u>	<u>Total</u>
100 <u>Personnel Services – Salaries</u>				
100 Personnel Services – Salaries	8,300.25	1,732.50		10,032.75
<b>Total Personnel Services – Salaries</b>	<b>\$8,300.25</b>	<b>\$1,732.50</b>		<b>\$10,032.75</b>
200 <u>Personnel Services – Employee Benefits</u>				
220 Social Security Contributions	614.39	130.24		744.63
230 PSERS Retirement Contributions	2,846.14	594.08		3,440.22
<b>Total Personnel Services – Employee Benefits</b>	<b>\$3,460.53</b>	<b>\$724.32</b>		<b>\$4,184.85</b>
<b>Total 2260 Instruction and Curriculum Development Services</b>	<b>\$11,760.78</b>	<b>\$2,456.82</b>		<b>\$14,217.60</b>

LEA : 113362403     Elizabethtown Area SD

Printed 11/20/2020 7:47:09 AM

General Fund (10)

2270 Instructional Staff Professional Development Services	Elementary	Secondary	Federal	Total
100 <u>Personnel Services – Salaries</u>				
100 Personnel Services – Salaries	86.79	17,271.28		17,358.07
<b>Total Personnel Services – Salaries</b>	<b>\$86.79</b>	<b>\$17,271.28</b>		<b>\$17,358.07</b>
200 <u>Personnel Services – Employee Benefits</u>				
220 Social Security Contributions	6.41	1,276.29		1,282.70
230 PSERS Retirement Contributions	29.76	5,922.37		5,952.13
240 Tuition Reimbursement	183,635.68	194,592.77		378,228.45
<b>Total Personnel Services – Employee Benefits</b>	<b>\$183,671.85</b>	<b>\$201,791.43</b>		<b>\$385,463.28</b>
300 <u>Purchased Professional and Technical Services</u>				
330 Other Professional Services	15.08	3,000.24		3,015.32
360 Employee Training and Development Services	826.91	141,463.86		142,290.77
<b>Total Purchased Professional and Technical Services</b>	<b>\$841.99</b>	<b>\$144,464.10</b>		<b>\$145,306.09</b>
500 <u>Other Purchased Services</u>				
580 Travel	21.23	4,621.73		4,642.96
<b>Total Other Purchased Services</b>	<b>\$21.23</b>	<b>\$4,621.73</b>		<b>\$4,642.96</b>
600 <u>Supplies</u>				
610 General Supplies	29.53	5,876.50		5,906.03
630 Food	6.86	1,365.74		1,372.60
640 Books and Periodicals		1,489.00		1,489.00
<b>Total Supplies</b>	<b>\$36.39</b>	<b>\$8,731.24</b>		<b>\$8,767.63</b>
<b>Total 2270 Instructional Staff Professional Development Services</b>	<b>\$184,658.25</b>	<b>\$376,879.78</b>		<b>\$561,538.03</b>

LEA : 113362403     Elizabethtown Area SD

Printed 11/20/2020 7:47:09 AM

General Fund (10)

2300 Support Services – Administration	Elementary	Secondary	Federal	Total
<b>100 Personnel Services – Salaries</b>				
100 Personnel Services – Salaries	782,541.87	783,970.97		2,132,940.12
<b>Total Personnel Services – Salaries</b>	<b>\$782,541.87</b>	<b>\$783,970.97</b>		<b>\$2,132,940.12</b>
<b>200 Personnel Services – Employee Benefits</b>				
210 Group Insurance – Contracted Provider	16,983.67	12,248.11		36,605.90
220 Social Security Contributions	58,279.99	59,189.27		156,183.01
230 PSERS Retirement Contributions	259,271.92	265,915.92		715,129.61
260 Workers' Compensation	8,544.23	5,643.40		18,386.47
270 Group Insurance – Self-Insurance	234,550.59	147,542.87		463,040.73
291 Other Retirement Plans	20,554.18	9,422.50		57,895.46
292 Health Savings Accounts	8,360.00	7,955.62		20,115.62
299 All Other Employee Benefits				500.00
<b>Total Personnel Services – Employee Benefits</b>	<b>\$606,544.58</b>	<b>\$507,917.69</b>		<b>\$1,467,856.80</b>
<b>300 Purchased Professional and Technical Services</b>				
310 Official / Administrative Services				92,341.52
330 Other Professional Services				68,160.50
<b>Total Purchased Professional and Technical Services</b>				<b>\$160,502.02</b>
<b>500 Other Purchased Services</b>				
530 Communications	4,008.13	7,692.73		81,273.52
550 Printing and Binding				10,526.24
580 Travel	602.07			3,631.47
<b>Total Other Purchased Services</b>	<b>\$4,610.20</b>	<b>\$7,692.73</b>		<b>\$95,431.23</b>
<b>600 Supplies</b>				
610 General Supplies	4,943.13	3,296.52		32,410.67
630 Food	1,518.65	2,810.47		7,794.37
640 Books and Periodicals	220.28	270.76		739.56
650 Supplies & Fees – Technology Related				14.97
<b>Total Supplies</b>	<b>\$6,682.06</b>	<b>\$6,377.75</b>		<b>\$40,959.57</b>
<b>800 Other Objects</b>				
810 Dues and Fees	103.16	4,393.79		35,013.67
<b>Total Other Objects</b>	<b>\$103.16</b>	<b>\$4,393.79</b>		<b>\$35,013.67</b>
<b>Total 2300 Support Services – Administration</b>	<b>\$1,400,481.87</b>	<b>\$1,310,352.93</b>		<b>\$3,932,703.41</b>

LEA : 113362403     Elizabethtown Area SD

Printed 11/20/2020 7:47:09 AM

General Fund (10)				
2310 Board Services				
	<u>Elementary</u>	<u>Secondary</u>	<u>Federal</u>	<u>Total</u>
100 <u>Personnel Services – Salaries</u>				
100 Personnel Services – Salaries				2,399.80
Total Personnel Services – Salaries				\$2,399.80
200 <u>Personnel Services – Employee Benefits</u>				
220 Social Security Contributions				178.72
230 PSERS Retirement Contributions				822.90
Total Personnel Services – Employee Benefits				\$1,001.62
300 <u>Purchased Professional and Technical Services</u>				
330 Other Professional Services				26,445.00
Total Purchased Professional and Technical Services				\$26,445.00
500 <u>Other Purchased Services</u>				
580 Travel				1,361.00
Total Other Purchased Services				\$1,361.00
600 <u>Supplies</u>				
610 General Supplies				1,089.46
630 Food				1,908.01
650 Supplies & Fees – Technology Related				14.97
Total Supplies				\$3,012.44
800 <u>Other Objects</u>				
810 Dues and Fees				26,129.96
Total Other Objects				\$26,129.96
Total 2310 Board Services				\$60,349.82

LEA : 113362403     Elizabethtown Area SD

Printed 11/20/2020 7:47:09 AM

General Fund (10)

2330 Tax Assessment and Collection Services	<u>Elementary</u>	<u>Secondary</u>	<u>Federal</u>	<u>Total</u>
300 <u>Purchased Professional and Technical Services</u>				
310 Official / Administrative Services				92,341.52
Total Purchased Professional and Technical Services				\$92,341.52
500 <u>Other Purchased Services</u>				
550 Printing and Binding				10,526.24
Total Other Purchased Services				\$10,526.24
Total 2330 Tax Assessment and Collection Services				\$102,867.76



LEA : 113362403     Elizabethtown Area SD

Printed 11/20/2020 7:47:09 AM

General Fund (10)

2350 Legal and Accounting Services	<u>Elementary</u>	<u>Secondary</u>	<u>Federal</u>	<u>Total</u>
300 <u>Purchased Professional and Technical Services</u>				
330 Other Professional Services				34,875.50
<b>Total Purchased Professional and Technical Services</b>				<b>\$34,875.50</b>
<b>Total 2350 Legal and Accounting Services</b>				<b>\$34,875.50</b>

LEA : 113362403     Elizabethtown Area SD

Printed 11/20/2020 7:47:09 AM

General Fund (10)				
2360 Office of the Superintendent / Executive Director Services	<u>Elementary</u>	<u>Secondary</u>	<u>Federal</u>	<u>Total</u>
100 <u>Personnel Services – Salaries</u>				
100 Personnel Services – Salaries				564,027.48
Total Personnel Services – Salaries				\$564,027.48
200 <u>Personnel Services – Employee Benefits</u>				
210 Group Insurance – Contracted Provider				7,374.12
220 Social Security Contributions				38,535.03
230 PSERS Retirement Contributions				189,118.87
260 Workers' Compensation				4,198.84
270 Group Insurance – Self-Insurance				80,947.27
291 Other Retirement Plans				27,918.78
292 Health Savings Accounts				3,800.00
299 All Other Employee Benefits				500.00
Total Personnel Services – Employee Benefits				\$352,392.91
300 <u>Purchased Professional and Technical Services</u>				
330 Other Professional Services				6,840.00
Total Purchased Professional and Technical Services				\$6,840.00
500 <u>Other Purchased Services</u>				
580 Travel				1,668.40
Total Other Purchased Services				\$1,668.40
600 <u>Supplies</u>				
610 General Supplies				502.03
630 Food				1,557.24
640 Books and Periodicals				248.52
Total Supplies				\$2,307.79
800 <u>Other Objects</u>				
810 Dues and Fees				3,921.76
Total Other Objects				\$3,921.76
Total 2360 Office of the Superintendent / Executive Director Services				\$931,158.34

LEA : 113362403     Elizabethtown Area SD

Printed 11/20/2020 7:47:09 AM

General Fund (10)				
2380 Office of the Principal Services	<u>Elementary</u>	<u>Secondary</u>	<u>Federal</u>	<u>Total</u>
100 <u>Personnel Services – Salaries</u>				
100 Personnel Services – Salaries	782,541.87	783,970.97		1,566,512.84
<b>Total Personnel Services – Salaries</b>	<b>\$782,541.87</b>	<b>\$783,970.97</b>		<b>\$1,566,512.84</b>
200 <u>Personnel Services – Employee Benefits</u>				
210 Group Insurance – Contracted Provider	16,983.67	12,248.11		29,231.78
220 Social Security Contributions	58,279.99	59,189.27		117,469.26
230 PSERS Retirement Contributions	259,271.92	265,915.92		525,187.84
260 Workers' Compensation	8,544.23	5,643.40		14,187.63
270 Group Insurance – Self-Insurance	234,550.59	147,542.87		382,093.46
291 Other Retirement Plans	20,554.18	9,422.50		29,976.68
292 Health Savings Accounts	8,360.00	7,955.62		16,315.62
<b>Total Personnel Services – Employee Benefits</b>	<b>\$606,544.58</b>	<b>\$507,917.69</b>		<b>\$1,114,462.27</b>
500 <u>Other Purchased Services</u>				
530 Communications	4,008.13	7,692.73		11,700.86
580 Travel	602.07			602.07
<b>Total Other Purchased Services</b>	<b>\$4,610.20</b>	<b>\$7,692.73</b>		<b>\$12,302.93</b>
600 <u>Supplies</u>				
610 General Supplies	4,943.13	3,296.52		8,239.65
630 Food	1,518.65	2,810.47		4,329.12
640 Books and Periodicals	220.28	270.76		491.04
<b>Total Supplies</b>	<b>\$6,682.06</b>	<b>\$6,377.75</b>		<b>\$13,059.81</b>
800 <u>Other Objects</u>				
810 Dues and Fees	103.16	4,393.79		4,496.95
<b>Total Other Objects</b>	<b>\$103.16</b>	<b>\$4,393.79</b>		<b>\$4,496.95</b>
<b>Total 2380 Office of the Principal Services</b>	<b>\$1,400,481.87</b>	<b>\$1,310,352.93</b>		<b>\$2,710,834.80</b>

LEA : 113362403     Elizabethtown Area SD

Printed 11/20/2020 7:47:09 AM

General Fund (10)				
2390 Other Administration Services	<u>Elementary</u>	<u>Secondary</u>	<u>Federal</u>	<u>Total</u>
500 <u>Other Purchased Services</u>				
530 Communications				69,572.66
Total Other Purchased Services				\$69,572.66
600 <u>Supplies</u>				
610 General Supplies				22,579.53
Total Supplies				\$22,579.53
800 <u>Other Objects</u>				
810 Dues and Fees				465.00
Total Other Objects				\$465.00
Total 2390 Other Administration Services				\$92,617.19

LEA : 113362403     Elizabethtown Area SD

Printed 11/20/2020 7:47:09 AM

General Fund (10)				
2400 Support Services – Pupil Health	<u>Elementary</u>	<u>Secondary</u>	<u>Federal</u>	<u>Total</u>
100 <u>Personnel Services – Salaries</u>				
100 Personnel Services – Salaries				468,677.83
Total Personnel Services – Salaries				\$468,677.83
200 <u>Personnel Services – Employee Benefits</u>				
210 Group Insurance – Contracted Provider				11,692.25
220 Social Security Contributions				34,239.66
230 PSERS Retirement Contributions				153,182.02
260 Workers' Compensation				3,489.54
270 Group Insurance – Self-Insurance				136,621.19
292 Health Savings Accounts				4,940.00
Total Personnel Services – Employee Benefits				\$344,164.66
300 <u>Purchased Professional and Technical Services</u>				
330 Other Professional Services				4,383.34
Total Purchased Professional and Technical Services				\$4,383.34
400 <u>Purchased Property Services</u>				
430 Repairs and Maintenance Services				487.91
Total Purchased Property Services				\$487.91
500 <u>Other Purchased Services</u>				
580 Travel				60.26
Total Other Purchased Services				\$60.26
600 <u>Supplies</u>				
610 General Supplies				15,922.13
640 Books and Periodicals				468.99
Total Supplies				\$16,391.12
800 <u>Other Objects</u>				
810 Dues and Fees				130.00
Total Other Objects				\$130.00
Total 2400 Support Services – Pupil Health				\$834,295.12

LEA : 113362403     Elizabethtown Area SD

Printed 11/20/2020 7:47:09 AM

General Fund (10)

2420 Medical Services

	<u>Elementary</u>	<u>Secondary</u>	<u>Federal</u>	<u>Total</u>
300 <u>Purchased Professional and Technical Services</u>				
330 Other Professional Services				4,383.34
Total Purchased Professional and Technical Services				\$4,383.34
Total 2420 Medical Services				\$4,383.34

LEA : 113362403     Elizabethtown Area SD

Printed 11/20/2020 7:47:09 AM

General Fund (10)

2440 Nursing Services

	Elementary	Secondary	Federal	Total
100 <u>Personnel Services – Salaries</u>				
100 Personnel Services – Salaries				468,677.83
<b>Total Personnel Services – Salaries</b>				<b>\$468,677.83</b>
200 <u>Personnel Services – Employee Benefits</u>				
210 Group Insurance – Contracted Provider				11,692.25
220 Social Security Contributions				34,239.66
230 PSERS Retirement Contributions				153,182.02
260 Workers' Compensation				3,489.54
270 Group Insurance – Self-Insurance				136,621.19
292 Health Savings Accounts				4,940.00
<b>Total Personnel Services – Employee Benefits</b>				<b>\$344,164.66</b>
400 <u>Purchased Property Services</u>				
430 Repairs and Maintenance Services				487.91
<b>Total Purchased Property Services</b>				<b>\$487.91</b>
500 <u>Other Purchased Services</u>				
580 Travel				60.26
<b>Total Other Purchased Services</b>				<b>\$60.26</b>
600 <u>Supplies</u>				
610 General Supplies				15,899.16
640 Books and Periodicals				468.99
<b>Total Supplies</b>				<b>\$16,368.15</b>
800 <u>Other Objects</u>				
810 Dues and Fees				130.00
<b>Total Other Objects</b>				<b>\$130.00</b>
<b>Total 2440 Nursing Services</b>				<b>\$829,888.81</b>

LEA : 113362403     Elizabethtown Area SD

Printed 11/20/2020 7:47:09 AM

General Fund (10)				
2490 Other Health Services	<u>Elementary</u>	<u>Secondary</u>	<u>Federal</u>	<u>Total</u>
600 <u>Supplies</u>				
610 General Supplies				22.97
Total Supplies				\$22.97
Total 2490 Other Health Services				\$22.97



LEA : 113362403     Elizabethtown Area SD

Printed 11/20/2020 7:47:09 AM

General Fund (10)					
2500 Support Services – Business		Elementary	Secondary	Federal	Total
<b>100 Personnel Services – Salaries</b>					
100 Personnel Services – Salaries					448,853.40
<b>Total Personnel Services – Salaries</b>					<b>\$448,853.40</b>
<b>200 Personnel Services – Employee Benefits</b>					
210 Group Insurance – Contracted Provider					9,953.47
220 Social Security Contributions					33,502.72
230 PSERS Retirement Contributions					155,591.72
250 Unemployment Compensation					4,378.33
260 Workers' Compensation					3,229.94
270 Group Insurance – Self-Insurance					134,801.55
291 Other Retirement Plans					1,989.94
292 Health Savings Accounts					5,320.00
<b>Total Personnel Services – Employee Benefits</b>					<b>\$348,767.67</b>
<b>300 Purchased Professional and Technical Services</b>					
330 Other Professional Services					3,225.06
340 Technical Services					1,600.00
<b>Total Purchased Professional and Technical Services</b>					<b>\$4,825.06</b>
<b>400 Purchased Property Services</b>					
430 Repairs and Maintenance Services					352.39
440 Rentals					136,713.42
<b>Total Purchased Property Services</b>					<b>\$137,065.81</b>
<b>500 Other Purchased Services</b>					
530 Communications					11,800.26
549 Other Advertising/Public Relations					8,588.46
580 Travel					502.94
<b>Total Other Purchased Services</b>					<b>\$20,891.66</b>
<b>600 Supplies</b>					
610 General Supplies					33,073.23
630 Food					3,913.94
640 Books and Periodicals					172.20
650 Supplies & Fees – Technology Related					46,593.57
<b>Total Supplies</b>					<b>\$83,752.94</b>
<b>800 Other Objects</b>					
810 Dues and Fees					29,129.09
<b>Total Other Objects</b>					<b>\$29,129.09</b>
<b>Total 2500 Support Services – Business</b>					<b>\$1,073,285.63</b>

LEA : 113362403     Elizabethtown Area SD

Printed 11/20/2020 7:47:09 AM

<b>General Fund (10)</b>				
<b>2510 Fiscal Services</b>	<u>Elementary</u>	<u>Secondary</u>	<u>Federal</u>	<u>Total</u>
<b>100 <u>Personnel Services – Salaries</u></b>				
100 Personnel Services – Salaries				393,904.73
<b>Total Personnel Services – Salaries</b>				<b>\$393,904.73</b>
<b>200 <u>Personnel Services – Employee Benefits</u></b>				
210 Group Insurance – Contracted Provider				8,355.16
220 Social Security Contributions				29,489.38
230 PSERS Retirement Contributions				136,749.85
250 Unemployment Compensation				4,378.33
260 Workers' Compensation				2,776.89
270 Group Insurance – Self-Insurance				111,761.15
291 Other Retirement Plans				1,989.94
292 Health Savings Accounts				4,180.00
<b>Total Personnel Services – Employee Benefits</b>				<b>\$299,680.70</b>
<b>300 <u>Purchased Professional and Technical Services</u></b>				
330 Other Professional Services				3,225.06
340 Technical Services				1,600.00
<b>Total Purchased Professional and Technical Services</b>				<b>\$4,825.06</b>
<b>400 <u>Purchased Property Services</u></b>				
440 Rentals				136,713.42
<b>Total Purchased Property Services</b>				<b>\$136,713.42</b>
<b>500 <u>Other Purchased Services</u></b>				
530 Communications				11,800.26
549 Other Advertising/Public Relations				8,588.46
580 Travel				502.94
<b>Total Other Purchased Services</b>				<b>\$20,891.66</b>
<b>600 <u>Supplies</u></b>				
610 General Supplies				28,741.26
630 Food				3,913.94
640 Books and Periodicals				172.20
650 Supplies & Fees – Technology Related				46,593.57
<b>Total Supplies</b>				<b>\$79,420.97</b>
<b>800 <u>Other Objects</u></b>				
810 Dues and Fees				29,129.09
<b>Total Other Objects</b>				<b>\$29,129.09</b>
<b>Total 2510 Fiscal Services</b>				<b>\$964,565.63</b>

LEA : 113362403     Elizabethtown Area SD

Printed 11/20/2020 7:47:09 AM

General Fund (10)				
2511 Supervision of Fiscal Services - Head of Component	<u>Elementary</u>	<u>Secondary</u>	<u>Federal</u>	<u>Total</u>
100 <u>Personnel Services – Salaries</u>				
100 Personnel Services – Salaries				351,276.44
Total Personnel Services – Salaries				\$351,276.44
200 <u>Personnel Services – Employee Benefits</u>				
210 Group Insurance – Contracted Provider				7,936.53
220 Social Security Contributions				26,338.14
230 PSERS Retirement Contributions				122,585.98
250 Unemployment Compensation				4,378.33
260 Workers' Compensation				2,409.26
270 Group Insurance – Self-Insurance				105,512.80
291 Other Retirement Plans				1,989.94
292 Health Savings Accounts				3,420.00
Total Personnel Services – Employee Benefits				\$274,570.98
300 <u>Purchased Professional and Technical Services</u>				
330 Other Professional Services				1,800.00
340 Technical Services				1,600.00
Total Purchased Professional and Technical Services				\$3,400.00
400 <u>Purchased Property Services</u>				
440 Rentals				136,713.42
Total Purchased Property Services				\$136,713.42
500 <u>Other Purchased Services</u>				
530 Communications				11,800.26
549 Other Advertising/Public Relations				8,588.46
580 Travel				502.94
Total Other Purchased Services				\$20,891.66
600 <u>Supplies</u>				
610 General Supplies				28,536.95
630 Food				3,913.94
640 Books and Periodicals				172.20
650 Supplies & Fees – Technology Related				46,593.57
Total Supplies				\$79,216.66
800 <u>Other Objects</u>				
810 Dues and Fees				13,693.32
Total Other Objects				\$13,693.32
Total 2511 Supervision of Fiscal Services - Head of Component				\$879,762.48

LEA : 113362403     Elizabethtown Area SD

Printed 11/20/2020 7:47:09 AM

General Fund (10)				
2514 Payroll Services	<u>Elementary</u>	<u>Secondary</u>	<u>Federal</u>	<u>Total</u>
100 <u>Personnel Services – Salaries</u>				
100 Personnel Services – Salaries				42,628.29
Total Personnel Services – Salaries				\$42,628.29
200 <u>Personnel Services – Employee Benefits</u>				
210 Group Insurance – Contracted Provider				418.63
220 Social Security Contributions				3,151.24
230 PSERS Retirement Contributions				14,163.87
260 Workers' Compensation				367.63
270 Group Insurance – Self-Insurance				6,248.35
292 Health Savings Accounts				760.00
Total Personnel Services – Employee Benefits				\$25,109.72
300 <u>Purchased Professional and Technical Services</u>				
330 Other Professional Services				1,425.06
Total Purchased Professional and Technical Services				\$1,425.06
600 <u>Supplies</u>				
610 General Supplies				204.31
Total Supplies				\$204.31
800 <u>Other Objects</u>				
810 Dues and Fees				5,129.37
Total Other Objects				\$5,129.37
Total 2514 Payroll Services				\$74,496.75

LEA : 113362403     Elizabethtown Area SD

Printed 11/20/2020 7:47:09 AM

General Fund (10)				
2519 Other Fiscal Services	<u>Elementary</u>	<u>Secondary</u>	<u>Federal</u>	<u>Total</u>
800 <u>Other Objects</u>				
810 Dues and Fees				10,306.40
Total Other Objects				\$10,306.40
Total 2519 Other Fiscal Services				\$10,306.40

LEA : 113362403     Elizabethtown Area SD

Printed 11/20/2020 7:47:09 AM

General Fund (10)				
2530 Warehousing and Distributing Services	<u>Elementary</u>	<u>Secondary</u>	<u>Federal</u>	<u>Total</u>
100 <u>Personnel Services – Salaries</u>				
100 Personnel Services – Salaries				54,948.67
Total Personnel Services – Salaries				\$54,948.67
200 <u>Personnel Services – Employee Benefits</u>				
210 Group Insurance – Contracted Provider				1,598.31
220 Social Security Contributions				4,013.34
230 PSERS Retirement Contributions				18,841.87
260 Workers' Compensation				453.05
270 Group Insurance – Self-Insurance				23,040.40
292 Health Savings Accounts				1,140.00
Total Personnel Services – Employee Benefits				\$49,086.97
400 <u>Purchased Property Services</u>				
430 Repairs and Maintenance Services				352.39
Total Purchased Property Services				\$352.39
600 <u>Supplies</u>				
610 General Supplies				4,331.97
Total Supplies				\$4,331.97
Total 2530 Warehousing and Distributing Services				\$108,720.00

LEA : 113362403     Elizabethtown Area SD

Printed 11/20/2020 7:47:09 AM

General Fund (10)				
2600 Operation and Maintenance of Plant Services	<u>Elementary</u>	<u>Secondary</u>	<u>Federal</u>	<u>Total</u>
100 <u>Personnel Services – Salaries</u>				
100 Personnel Services – Salaries				1,489,682.01
Total Personnel Services – Salaries				\$1,489,682.01
200 <u>Personnel Services – Employee Benefits</u>				
210 Group Insurance – Contracted Provider				35,494.33
220 Social Security Contributions				110,887.57
230 PSERS Retirement Contributions				506,892.57
260 Workers' Compensation				12,630.87
270 Group Insurance – Self-Insurance				462,502.09
291 Other Retirement Plans				6,917.75
292 Health Savings Accounts				18,240.00
Total Personnel Services – Employee Benefits				\$1,153,565.18
300 <u>Purchased Professional and Technical Services</u>				
330 Other Professional Services				15,787.36
350 Security / Safety Services				63,330.75
Total Purchased Professional and Technical Services				\$79,118.11
400 <u>Purchased Property Services</u>				
410 Cleaning Services				278,724.86
420 Utility Services				61,553.52
430 Repairs and Maintenance Services				344,711.31
440 Rentals				9,570.91
460 Extermination Services				7,085.30
490 Other Purchased Property Services				5,705.68
Total Purchased Property Services				\$707,351.58
500 <u>Other Purchased Services</u>				
523 General Property and Liability Insurance				232,529.00
530 Communications				478.68
580 Travel				955.74
Total Other Purchased Services				\$233,963.42
600 <u>Supplies</u>				
610 General Supplies	1,347.67	283,915.25		285,262.92
620 Energy				671,447.48
630 Food				481.16
650 Supplies & Fees – Technology Related				14,714.29
Total Supplies	\$1,347.67	\$283,915.25		\$971,905.85
800 <u>Other Objects</u>				
810 Dues and Fees				45.00
Total Other Objects				\$45.00
Total 2600 Operation and Maintenance of Plant Services	\$1,347.67	\$283,915.25		\$4,635,631.15

LEA : 113362403     Elizabethtown Area SD

Printed 11/20/2020 7:47:09 AM

General Fund (10)

2610 Supervision of Operation and Maintenance of Plant Services	<u>Elementary</u>	<u>Secondary</u>	<u>Federal</u>	<u>Total</u>
100 <u>Personnel Services – Salaries</u>				
100 Personnel Services – Salaries				140,313.26
<b>Total Personnel Services – Salaries</b>				<b>\$140,313.26</b>
200 <u>Personnel Services – Employee Benefits</u>				
210 Group Insurance – Contracted Provider				1,985.97
220 Social Security Contributions				10,256.55
230 PSERS Retirement Contributions				48,113.45
260 Workers' Compensation				1,045.94
270 Group Insurance – Self-Insurance				25,618.04
291 Other Retirement Plans				3,390.10
292 Health Savings Accounts				1,140.00
<b>Total Personnel Services – Employee Benefits</b>				<b>\$91,550.05</b>
<b>Total 2610 Supervision of Operation and Maintenance of Plant Services</b>				<b>\$231,863.31</b>



LEA : 113362403     Elizabethtown Area SD

Printed 11/20/2020 7:47:09 AM

General Fund (10)				
2611 Supervision of Operation and Maintenance of Plant Services – Head of Component	<u>Elementary</u>	<u>Secondary</u>	<u>Federal</u>	<u>Total</u>
100 <u>Personnel Services – Salaries</u>				
100 Personnel Services – Salaries				140,313.26
Total Personnel Services – Salaries				\$140,313.26
200 <u>Personnel Services – Employee Benefits</u>				
210 Group Insurance – Contracted Provider				1,985.97
220 Social Security Contributions				10,256.55
230 PSERS Retirement Contributions				48,113.45
260 Workers' Compensation				1,045.94
270 Group Insurance – Self-Insurance				25,618.04
291 Other Retirement Plans				3,390.10
292 Health Savings Accounts				1,140.00
Total Personnel Services – Employee Benefits				\$91,550.05
Total 2611 Supervision of Operation and Maintenance of Plant Services – Head of Component				\$231,863.31

LEA : 113362403     Elizabethtown Area SD

Printed 11/20/2020 7:47:09 AM

General Fund (10)

2620 Operation of Buildings Services	Elementary	Secondary	Federal	Total
100 <u>Personnel Services – Salaries</u>				
100 Personnel Services – Salaries				1,114,954.34
<b>Total Personnel Services – Salaries</b>				<b>\$1,114,954.34</b>
200 <u>Personnel Services – Employee Benefits</u>				
210 Group Insurance – Contracted Provider				27,623.44
220 Social Security Contributions				83,144.24
230 PSERS Retirement Contributions				378,398.51
260 Workers' Compensation				10,650.36
270 Group Insurance – Self-Insurance				371,757.05
292 Health Savings Accounts				15,580.00
<b>Total Personnel Services – Employee Benefits</b>				<b>\$887,153.60</b>
400 <u>Purchased Property Services</u>				
420 Utility Services				61,553.52
440 Rentals				1,829.01
<b>Total Purchased Property Services</b>				<b>\$63,382.53</b>
500 <u>Other Purchased Services</u>				
523 General Property and Liability Insurance				232,529.00
530 Communications				478.68
580 Travel				955.74
<b>Total Other Purchased Services</b>				<b>\$233,963.42</b>
600 <u>Supplies</u>				
610 General Supplies	1,262.98	267,061.81		268,324.79
620 Energy				655,713.37
630 Food				481.16
650 Supplies & Fees – Technology Related				10,959.71
<b>Total Supplies</b>	<b>\$1,262.98</b>	<b>\$267,061.81</b>		<b>\$935,479.03</b>
800 <u>Other Objects</u>				
810 Dues and Fees				35.00
<b>Total Other Objects</b>				<b>\$35.00</b>
<b>Total 2620 Operation of Buildings Services</b>	<b>\$1,262.98</b>	<b>\$267,061.81</b>		<b>\$3,234,967.92</b>

LEA : 113362403     Elizabethtown Area SD

Printed 11/20/2020 7:47:09 AM

General Fund (10)				
2630 Care and Upkeep of Grounds Services	<u>Elementary</u>	<u>Secondary</u>	<u>Federal</u>	<u>Total</u>
100 <u>Personnel Services – Salaries</u>				
100 Personnel Services – Salaries				157,428.71
Total Personnel Services – Salaries				\$157,428.71
200 <u>Personnel Services – Employee Benefits</u>				
210 Group Insurance – Contracted Provider				4,509.66
220 Social Security Contributions				11,940.72
230 PSERS Retirement Contributions				53,982.14
260 Workers' Compensation				605.46
270 Group Insurance – Self-Insurance				45,372.52
292 Health Savings Accounts				760.00
Total Personnel Services – Employee Benefits				\$117,170.50
400 <u>Purchased Property Services</u>				
410 Cleaning Services				28,660.30
Total Purchased Property Services				\$28,660.30
600 <u>Supplies</u>				
610 General Supplies	40.11	7,982.52		8,022.63
Total Supplies	\$40.11	\$7,982.52		\$8,022.63
800 <u>Other Objects</u>				
810 Dues and Fees				10.00
Total Other Objects				\$10.00
Total 2630 Care and Upkeep of Grounds Services	\$40.11	\$7,982.52		\$311,292.14

LEA : 113362403     Elizabethtown Area SD

Printed 11/20/2020 7:47:09 AM

General Fund (10)				
2640 Care and Upkeep of Equipment Services	<u>Elementary</u>	<u>Secondary</u>	<u>Federal</u>	<u>Total</u>
400 <u>Purchased Property Services</u>				
430 Repairs and Maintenance Services				4,098.55
Total Purchased Property Services				\$4,098.55
600 <u>Supplies</u>				
610 General Supplies	34.73	6,910.40		6,945.13
620 Energy				69.00
Total Supplies	\$34.73	\$6,910.40		\$7,014.13
Total 2640 Care and Upkeep of Equipment Services	\$34.73	\$6,910.40		\$11,112.68

LEA : 113362403     Elizabethtown Area SD

Printed 11/20/2020 7:47:09 AM

General Fund (10)				
2650 Vehicle Operation and Maintenance Services (Other Than Student Transportation Vehicles)	<u>Elementary</u>	<u>Secondary</u>	<u>Federal</u>	<u>Total</u>
400 <u>Purchased Property Services</u>				
430 Repairs and Maintenance Services				24,610.36
Total Purchased Property Services				\$24,610.36
600 <u>Supplies</u>				
610 General Supplies	9.31	1,852.33		1,861.64
620 Energy				15,665.11
Total Supplies	\$9.31	\$1,852.33		\$17,526.75
Total 2650 Vehicle Operation and Maintenance Services (Other Than Student Transportation Vehicles)	\$9.31	\$1,852.33		\$42,137.11

LEA : 113362403     Elizabethtown Area SD

Printed 11/20/2020 7:47:09 AM

General Fund (10)				
2660 Safety and Security Services	<u>Elementary</u>	<u>Secondary</u>	<u>Federal</u>	<u>Total</u>
100 <u>Personnel Services – Salaries</u>				
100 Personnel Services – Salaries				76,985.70
<b>Total Personnel Services – Salaries</b>				<b>\$76,985.70</b>
200 <u>Personnel Services – Employee Benefits</u>				
210 Group Insurance – Contracted Provider				1,375.26
220 Social Security Contributions				5,546.06
230 PSERS Retirement Contributions				26,398.47
260 Workers' Compensation				329.11
270 Group Insurance – Self-Insurance				19,754.48
291 Other Retirement Plans				3,527.65
292 Health Savings Accounts				760.00
<b>Total Personnel Services – Employee Benefits</b>				<b>\$57,691.03</b>
300 <u>Purchased Professional and Technical Services</u>				
330 Other Professional Services				7,650.00
350 Security / Safety Services				63,330.75
<b>Total Purchased Professional and Technical Services</b>				<b>\$70,980.75</b>
600 <u>Supplies</u>				
610 General Supplies	0.54	108.19		108.73
650 Supplies & Fees – Technology Related				3,754.58
<b>Total Supplies</b>	<b>\$0.54</b>	<b>\$108.19</b>		<b>\$3,863.31</b>
<b>Total 2660 Safety and Security Services</b>	<b>\$0.54</b>	<b>\$108.19</b>		<b>\$209,520.79</b>

LEA : 113362403     Elizabethtown Area SD

Printed 11/20/2020 7:47:09 AM

General Fund (10)				
2690 Other Operation and Maintenance of Plant Services	<u>Elementary</u>	<u>Secondary</u>	<u>Federal</u>	<u>Total</u>
300 <u>Purchased Professional and Technical Services</u>				
330 Other Professional Services				8,137.36
Total Purchased Professional and Technical Services				\$8,137.36
400 <u>Purchased Property Services</u>				
410 Cleaning Services				250,064.56
430 Repairs and Maintenance Services				316,002.40
440 Rentals				7,741.90
460 Extermination Services				7,085.30
490 Other Purchased Property Services				5,705.68
Total Purchased Property Services				\$586,599.84
Total 2690 Other Operation and Maintenance of Plant Services				\$594,737.20

LEA : 113362403     Elizabethtown Area SD

Printed 11/20/2020 7:47:09 AM

<b>General Fund (10)</b>				
<b>2700 Student Transportation Services</b>	<b><u>Elementary</u></b>	<b><u>Secondary</u></b>	<b><u>Federal</u></b>	<b><u>Total</u></b>
<b>100 <u>Personnel Services – Salaries</u></b>				
100 Personnel Services – Salaries				86,668.00
<b>Total Personnel Services – Salaries</b>				<b>\$86,668.00</b>
<b>200 <u>Personnel Services – Employee Benefits</u></b>				
210 Group Insurance – Contracted Provider				1,539.50
220 Social Security Contributions				6,240.02
230 PSERS Retirement Contributions				26,289.58
260 Workers' Compensation				554.37
270 Group Insurance – Self-Insurance				19,754.48
291 Other Retirement Plans				1,482.36
292 Health Savings Accounts				760.00
<b>Total Personnel Services – Employee Benefits</b>				<b>\$56,620.31</b>
<b>500 <u>Other Purchased Services</u></b>				
513 Contracted Carriers				1,990,524.00
516 Student Transportation Services From the IU				176,862.69
580 Travel				101.56
<b>Total Other Purchased Services</b>				<b>\$2,167,488.25</b>
<b>600 <u>Supplies</u></b>				
610 General Supplies				142.00
650 Supplies & Fees – Technology Related				7,350.00
<b>Total Supplies</b>				<b>\$7,492.00</b>
<b>Total 2700 Student Transportation Services</b>				<b>\$2,318,268.56</b>



LEA : 113362403     Elizabethtown Area SD

Printed 11/20/2020 7:47:09 AM

General Fund (10)				
2710 Supervision of Student Transportation Services	<u>Elementary</u>	<u>Secondary</u>	<u>Federal</u>	<u>Total</u>
100 <u>Personnel Services – Salaries</u>				
100 Personnel Services – Salaries				84,618.00
Total Personnel Services – Salaries				\$84,618.00
200 <u>Personnel Services – Employee Benefits</u>				
210 Group Insurance – Contracted Provider				1,539.50
220 Social Security Contributions				6,083.15
230 PSERS Retirement Contributions				25,586.64
260 Workers' Compensation				554.37
270 Group Insurance – Self-Insurance				19,754.48
291 Other Retirement Plans				1,482.36
292 Health Savings Accounts				760.00
Total Personnel Services – Employee Benefits				\$55,760.50
500 <u>Other Purchased Services</u>				
580 Travel				101.56
Total Other Purchased Services				\$101.56
600 <u>Supplies</u>				
610 General Supplies				142.00
650 Supplies & Fees – Technology Related				7,350.00
Total Supplies				\$7,492.00
Total 2710 Supervision of Student Transportation Services				\$147,972.06

LEA : 113362403     Elizabethtown Area SD

Printed 11/20/2020 7:47:09 AM

<b>General Fund (10)</b>				
<b>2711 Supervision of Student Transportation Services – Head of Component</b>	<u><b>Elementary</b></u>	<u><b>Secondary</b></u>	<u><b>Federal</b></u>	<u><b>Total</b></u>
<b>100 <u>Personnel Services – Salaries</u></b>				
100 Personnel Services – Salaries				84,618.00
<b>Total Personnel Services – Salaries</b>				<b>\$84,618.00</b>
<b>200 <u>Personnel Services – Employee Benefits</u></b>				
210 Group Insurance – Contracted Provider				1,539.50
220 Social Security Contributions				6,083.15
230 PSERS Retirement Contributions				25,586.64
260 Workers' Compensation				554.37
270 Group Insurance – Self-Insurance				19,754.48
291 Other Retirement Plans				1,482.36
292 Health Savings Accounts				760.00
<b>Total Personnel Services – Employee Benefits</b>				<b>\$55,760.50</b>
<b>500 <u>Other Purchased Services</u></b>				
580 Travel				101.56
<b>Total Other Purchased Services</b>				<b>\$101.56</b>
<b>600 <u>Supplies</u></b>				
610 General Supplies				142.00
650 Supplies & Fees – Technology Related				7,350.00
<b>Total Supplies</b>				<b>\$7,492.00</b>
<b>Total 2711 Supervision of Student Transportation Services – Head of Component</b>				<b>\$147,972.06</b>

LEA : 113362403     Elizabethtown Area SD

Printed 11/20/2020 7:47:09 AM

General Fund (10)				
2720 Vehicle Operation Services	<u>Elementary</u>	<u>Secondary</u>	<u>Federal</u>	<u>Total</u>
500 <u>Other Purchased Services</u>				
513 Contracted Carriers				1,720,283.09
516 Student Transportation Services From the IU				176,862.69
Total Other Purchased Services				\$1,897,145.78
Total 2720 Vehicle Operation Services				\$1,897,145.78

LEA : 113362403     Elizabethtown Area SD

Printed 11/20/2020 7:47:09 AM

General Fund (10)

2730 Monitoring Services

	<u>Elementary</u>	<u>Secondary</u>	<u>Federal</u>	<u>Total</u>
100 <u>Personnel Services – Salaries</u>				
100 Personnel Services – Salaries				2,050.00
<b>Total Personnel Services – Salaries</b>				<b>\$2,050.00</b>
200 <u>Personnel Services – Employee Benefits</u>				
220 Social Security Contributions				156.87
230 PSERS Retirement Contributions				702.94
<b>Total Personnel Services – Employee Benefits</b>				<b>\$859.81</b>
<b>Total 2730 Monitoring Services</b>				<b>\$2,909.81</b>

LEA : 113362403     Elizabethtown Area SD

Printed 11/20/2020 7:47:09 AM

General Fund (10)				
2750 Nonpublic Transportation	<u>Elementary</u>	<u>Secondary</u>	<u>Federal</u>	<u>Total</u>
500 <u>Other Purchased Services</u>				
513 Contracted Carriers				270,240.91
Total Other Purchased Services				\$270,240.91
Total 2750 Nonpublic Transportation				\$270,240.91

LEA : 113362403     Elizabethtown Area SD

Printed 11/20/2020 7:47:09 AM

General Fund (10)				
2800 Support Services – Central				
	<u>Elementary</u>	<u>Secondary</u>	<u>Federal</u>	<u>Total</u>
100 <u>Personnel Services – Salaries</u>				
100 Personnel Services – Salaries				810,262.95
Total Personnel Services – Salaries				\$810,262.95
200 <u>Personnel Services – Employee Benefits</u>				
210 Group Insurance – Contracted Provider				15,329.12
220 Social Security Contributions				62,605.74
230 PSERS Retirement Contributions				272,412.75
250 Unemployment Compensation				337.87
260 Workers' Compensation				6,141.66
270 Group Insurance – Self-Insurance				183,617.45
291 Other Retirement Plans				13,152.82
292 Health Savings Accounts				8,020.00
299 All Other Employee Benefits				9,414.16
Total Personnel Services – Employee Benefits				\$571,031.57
300 <u>Purchased Professional and Technical Services</u>				
340 Technical Services				849.88
360 Employee Training and Development Services			9,900.00	22,146.87
Total Purchased Professional and Technical Services			\$9,900.00	\$22,996.75
400 <u>Purchased Property Services</u>				
430 Repairs and Maintenance Services				40.00
440 Rentals				1,367.08
Total Purchased Property Services				\$1,407.08
500 <u>Other Purchased Services</u>				
530 Communications				1,894.98
550 Printing and Binding				9,329.00
580 Travel				9,738.73
Total Other Purchased Services				\$20,962.71
600 <u>Supplies</u>				
610 General Supplies				7,999.58
630 Food				311.45
640 Books and Periodicals				61.92
650 Supplies & Fees – Technology Related				144,644.31
Total Supplies				\$153,017.26
800 <u>Other Objects</u>				
810 Dues and Fees				4,934.50
Total Other Objects				\$4,934.50
Total 2800 Support Services – Central			\$9,900.00	\$1,584,612.82

LEA : 113362403     Elizabethtown Area SD

Printed 11/20/2020 7:47:09 AM

General Fund (10)				
2810 Planning, Research, Development and Evaluation Services	<u>Elementary</u>	<u>Secondary</u>	<u>Federal</u>	<u>Total</u>
100 <u>Personnel Services – Salaries</u>				
100 Personnel Services – Salaries				527,107.73
Total Personnel Services – Salaries				\$527,107.73
200 <u>Personnel Services – Employee Benefits</u>				
210 Group Insurance – Contracted Provider				10,362.17
220 Social Security Contributions				38,538.50
230 PSERS Retirement Contributions				177,033.35
260 Workers' Compensation				3,844.61
270 Group Insurance – Self-Insurance				120,574.17
291 Other Retirement Plans				5,866.62
292 Health Savings Accounts				4,560.00
Total Personnel Services – Employee Benefits				\$360,779.42
300 <u>Purchased Professional and Technical Services</u>				
340 Technical Services				849.88
Total Purchased Professional and Technical Services				\$849.88
400 <u>Purchased Property Services</u>				
430 Repairs and Maintenance Services				40.00
440 Rentals				1,367.08
Total Purchased Property Services				\$1,407.08
500 <u>Other Purchased Services</u>				
580 Travel				596.82
Total Other Purchased Services				\$596.82
600 <u>Supplies</u>				
610 General Supplies				3,255.43
640 Books and Periodicals				29.92
650 Supplies & Fees – Technology Related				92,296.57
Total Supplies				\$95,581.92
Total 2810 Planning, Research, Development and Evaluation Services				\$986,322.85

LEA : 113362403     Elizabethtown Area SD

Printed 11/20/2020 7:47:09 AM

General Fund (10)				
2820 Information Services	<u>Elementary</u>	<u>Secondary</u>	<u>Federal</u>	<u>Total</u>
100 <u>Personnel Services – Salaries</u>				
100 Personnel Services – Salaries				103,222.00
Total Personnel Services – Salaries				\$103,222.00
200 <u>Personnel Services – Employee Benefits</u>				
210 Group Insurance – Contracted Provider				1,675.23
220 Social Security Contributions				7,840.08
230 PSERS Retirement Contributions				33,680.24
260 Workers' Compensation				731.91
270 Group Insurance – Self-Insurance				19,754.48
291 Other Retirement Plans				3,758.54
292 Health Savings Accounts				760.00
Total Personnel Services – Employee Benefits				\$68,200.48
500 <u>Other Purchased Services</u>				
530 Communications				1,894.98
550 Printing and Binding				9,329.00
580 Travel				261.63
Total Other Purchased Services				\$11,485.61
600 <u>Supplies</u>				
610 General Supplies				48.89
640 Books and Periodicals				32.00
650 Supplies & Fees – Technology Related				24,909.04
Total Supplies				\$24,989.93
800 <u>Other Objects</u>				
810 Dues and Fees				260.00
Total Other Objects				\$260.00
Total 2820 Information Services				\$208,158.02



LEA : 113362403     Elizabethtown Area SD

Printed 11/20/2020 7:47:09 AM

General Fund (10)				
2823 Public Information Services	<u>Elementary</u>	<u>Secondary</u>	<u>Federal</u>	<u>Total</u>
100 <u>Personnel Services – Salaries</u>				
100 Personnel Services – Salaries				103,222.00
Total Personnel Services – Salaries				\$103,222.00
200 <u>Personnel Services – Employee Benefits</u>				
210 Group Insurance – Contracted Provider				1,675.23
220 Social Security Contributions				7,840.08
230 PSERS Retirement Contributions				33,680.24
260 Workers' Compensation				731.91
270 Group Insurance – Self-Insurance				19,754.48
291 Other Retirement Plans				3,758.54
292 Health Savings Accounts				760.00
Total Personnel Services – Employee Benefits				\$68,200.48
500 <u>Other Purchased Services</u>				
530 Communications				1,894.98
550 Printing and Binding				9,329.00
580 Travel				261.63
Total Other Purchased Services				\$11,485.61
600 <u>Supplies</u>				
610 General Supplies				48.89
640 Books and Periodicals				32.00
650 Supplies & Fees – Technology Related				24,909.04
Total Supplies				\$24,989.93
800 <u>Other Objects</u>				
810 Dues and Fees				260.00
Total Other Objects				\$260.00
Total 2823 Public Information Services				\$208,158.02

LEA : 113362403     Elizabethtown Area SD

Printed 11/20/2020 7:47:09 AM

General Fund (10)

2830 Staff Services

	Elementary	Secondary	Federal	Total
<b>100 <u>Personnel Services – Salaries</u></b>				
100 Personnel Services – Salaries				179,933.22
<b>Total Personnel Services – Salaries</b>				<b>\$179,933.22</b>
<b>200 <u>Personnel Services – Employee Benefits</u></b>				
210 Group Insurance – Contracted Provider				3,291.72
220 Social Security Contributions				16,227.16
230 PSERS Retirement Contributions				61,699.16
250 Unemployment Compensation				337.87
260 Workers' Compensation				1,565.14
270 Group Insurance – Self-Insurance				43,288.80
291 Other Retirement Plans				3,527.66
292 Health Savings Accounts				2,700.00
299 All Other Employee Benefits				9,414.16
<b>Total Personnel Services – Employee Benefits</b>				<b>\$142,051.67</b>
<b>300 <u>Purchased Professional and Technical Services</u></b>				
360 Employee Training and Development Services			9,900.00	22,146.87
<b>Total Purchased Professional and Technical Services</b>			<b>\$9,900.00</b>	<b>\$22,146.87</b>
<b>500 <u>Other Purchased Services</u></b>				
580 Travel				8,880.28
<b>Total Other Purchased Services</b>				<b>\$8,880.28</b>
<b>600 <u>Supplies</u></b>				
610 General Supplies				4,695.26
630 Food				311.45
650 Supplies & Fees – Technology Related				27,438.70
<b>Total Supplies</b>				<b>\$32,445.41</b>
<b>800 <u>Other Objects</u></b>				
810 Dues and Fees				4,674.50
<b>Total Other Objects</b>				<b>\$4,674.50</b>
<b>Total 2830 Staff Services</b>			<b>\$9,900.00</b>	<b>\$390,131.95</b>

LEA : 113362403     Elizabethtown Area SD

Printed 11/20/2020 7:47:09 AM

General Fund (10)				
2831 Supervision of Staff Services	<u>Elementary</u>	<u>Secondary</u>	<u>Federal</u>	<u>Total</u>
100 <u>Personnel Services – Salaries</u>				
100 Personnel Services – Salaries				179,933.22
Total Personnel Services – Salaries				\$179,933.22
200 <u>Personnel Services – Employee Benefits</u>				
210 Group Insurance – Contracted Provider				3,291.72
220 Social Security Contributions				16,227.16
230 PSERS Retirement Contributions				61,699.16
250 Unemployment Compensation				337.87
260 Workers' Compensation				1,565.14
270 Group Insurance – Self-Insurance				43,288.80
291 Other Retirement Plans				3,527.66
292 Health Savings Accounts				2,700.00
299 All Other Employee Benefits				9,414.16
Total Personnel Services – Employee Benefits				\$142,051.67
500 <u>Other Purchased Services</u>				
580 Travel				553.51
Total Other Purchased Services				\$553.51
600 <u>Supplies</u>				
610 General Supplies				4,235.56
630 Food				311.45
Total Supplies				\$4,547.01
800 <u>Other Objects</u>				
810 Dues and Fees				625.00
Total Other Objects				\$625.00
Total 2831 Supervision of Staff Services				\$327,710.41

LEA : 113362403     Elizabethtown Area SD

Printed 11/20/2020 7:47:09 AM

General Fund (10)

2832 Recruitment and Placement Services	<u>Elementary</u>	<u>Secondary</u>	<u>Federal</u>	<u>Total</u>
600 <u>Supplies</u>				
650 Supplies & Fees – Technology Related				27,438.70
Total Supplies				\$27,438.70
800 <u>Other Objects</u>				
810 Dues and Fees				185.50
Total Other Objects				\$185.50
Total 2832 Recruitment and Placement Services				\$27,624.20

LEA : 113362403     Elizabethtown Area SD

Printed 11/20/2020 7:47:09 AM

General Fund (10)

2834 Staff Development Services – Non-Instructional, Certified Staff Only	<u>Elementary</u>	<u>Secondary</u>	<u>Federal</u>	<u>Total</u>
300 <u>Purchased Professional and Technical Services</u>				
360 Employee Training and Development Services			9,900.00	15,581.00
Total Purchased Professional and Technical Services			\$9,900.00	\$15,581.00
500 <u>Other Purchased Services</u>				
580 Travel				7,899.27
Total Other Purchased Services				\$7,899.27
Total 2834 Staff Development Services – Non-Instructional, Certified Staff Only			\$9,900.00	\$23,480.27

LEA : 113362403     Elizabethtown Area SD

Printed 11/20/2020 7:47:09 AM

General Fund (10)				
2835 Health Services	<u>Elementary</u>	<u>Secondary</u>	<u>Federal</u>	<u>Total</u>
600 <u>Supplies</u>				
610 General Supplies				459.70
Total Supplies				\$459.70
800 <u>Other Objects</u>				
810 Dues and Fees				3,864.00
Total Other Objects				\$3,864.00
Total 2835 Health Services				\$4,323.70

LEA : 113362403     Elizabethtown Area SD

Printed 11/20/2020 7:47:09 AM

General Fund (10)

2836 Staff Development Services – Non-Instructional, Non-Certified Staff Only	<u>Elementary</u>	<u>Secondary</u>	<u>Federal</u>	<u>Total</u>
300 <u>Purchased Professional and Technical Services</u>				
360 Employee Training and Development Services				6,565.87
Total Purchased Professional and Technical Services				\$6,565.87
500 <u>Other Purchased Services</u>				
580 Travel				427.50
Total Other Purchased Services				\$427.50
Total 2836 Staff Development Services – Non-Instructional, Non-Certified Staff Only				\$6,993.37

LEA : 113362403     Elizabethtown Area SD

Printed 11/20/2020 7:47:09 AM

General Fund (10)

2900 Other Support Services	<u>Elementary</u>	<u>Secondary</u>	<u>Federal</u>	<u>Total</u>
500 <u>Other Purchased Services</u>				
595 IU Payments By Withholding				25,495.06
Total Other Purchased Services				\$25,495.06
Total 2900 Other Support Services				\$25,495.06



LEA : 113362403     Elizabethtown Area SD

Printed 11/20/2020 7:47:09 AM

General Fund (10)

2910 Support Services Not Listed Elsewhere In the 2000 Series

Elementary                      Secondary                      Federal                      Total

500 Other Purchased Services

595 IU Payments By Withholding 25,495.06

**Total Other Purchased Services \$25,495.06**

**Total 2910 Support Services Not Listed Elsewhere In the 2000 Series \$25,495.06**

LEA : 113362403     Elizabethtown Area SD

Printed 11/20/2020 7:47:19 AM

<b>General Fund (10)</b>	
<b>3000 Operation of Non-Instructional Services</b>	<b><u>Total</u></b>
<b>100 <u>Personnel Services – Salaries</u></b>	
100 Personnel Services – Salaries	509,095.23
<b>Total Personnel Services – Salaries</b>	<b>\$509,095.23</b>
<b>200 <u>Personnel Services – Employee Benefits</u></b>	
210 Group Insurance – Contracted Provider	2,937.37
220 Social Security Contributions	40,873.95
230 PSERS Retirement Contributions	154,775.55
260 Workers' Compensation	1,473.03
270 Group Insurance – Self-Insurance	39,509.02
292 Health Savings Accounts	1,520.00
<b>Total Personnel Services – Employee Benefits</b>	<b>\$241,088.92</b>
<b>300 <u>Purchased Professional and Technical Services</u></b>	
330 Other Professional Services	55,095.84
350 Security / Safety Services	6,802.78
390 Other Purchased Professional and Technical Services	61,646.40
<b>Total Purchased Professional and Technical Services</b>	<b>\$123,545.02</b>
<b>400 <u>Purchased Property Services</u></b>	
410 Cleaning Services	2,724.00
430 Repairs and Maintenance Services	19,978.62
<b>Total Purchased Property Services</b>	<b>\$22,702.62</b>
<b>500 <u>Other Purchased Services</u></b>	
510 Student Transportation Services	62,187.86
580 Travel	943.33
<b>Total Other Purchased Services</b>	<b>\$63,131.19</b>
<b>600 <u>Supplies</u></b>	
610 General Supplies	174,595.96
650 Supplies & Fees – Technology Related	2,008.48
<b>Total Supplies</b>	<b>\$176,604.44</b>
<b>700 <u>Property</u></b>	
762 Capitalized Equipment - Replacement	18,630.00
<b>Total Property</b>	<b>\$18,630.00</b>
<b>800 <u>Other Objects</u></b>	
810 Dues and Fees	49,303.98
860 Grants To Municipal and Community Service Organizations	13,540.00
<b>Total Other Objects</b>	<b>\$62,843.98</b>
<b>Total 3000 Operation of Non-Instructional Services</b>	<b>\$1,217,641.40</b>

LEA : 113362403     Elizabethtown Area SD

Printed 11/20/2020 7:47:19 AM

<b>General Fund (10)</b>				
<b>3200 Student Activities</b>	<u>Elementary</u>	<u>Secondary</u>	<u>Federal</u>	<u>Total</u>
<b>100 <u>Personnel Services – Salaries</u></b>				
100 Personnel Services – Salaries				498,921.41
<b>Total Personnel Services – Salaries</b>				<b>\$498,921.41</b>
<b>200 <u>Personnel Services – Employee Benefits</u></b>				
210 Group Insurance – Contracted Provider				2,937.37
220 Social Security Contributions				37,881.02
230 PSERS Retirement Contributions				154,775.55
260 Workers' Compensation				1,473.03
270 Group Insurance – Self-Insurance				39,509.02
292 Health Savings Accounts				1,520.00
<b>Total Personnel Services – Employee Benefits</b>				<b>\$238,095.99</b>
<b>300 <u>Purchased Professional and Technical Services</u></b>				
330 Other Professional Services				55,095.84
350 Security / Safety Services				6,802.78
390 Other Purchased Professional and Technical Services				35,631.50
<b>Total Purchased Professional and Technical Services</b>				<b>\$97,530.12</b>
<b>400 <u>Purchased Property Services</u></b>				
410 Cleaning Services				2,724.00
430 Repairs and Maintenance Services				19,978.62
<b>Total Purchased Property Services</b>				<b>\$22,702.62</b>
<b>500 <u>Other Purchased Services</u></b>				
510 Student Transportation Services				62,187.86
580 Travel				943.33
<b>Total Other Purchased Services</b>				<b>\$63,131.19</b>
<b>600 <u>Supplies</u></b>				
610 General Supplies				174,595.96
650 Supplies & Fees – Technology Related				2,008.48
<b>Total Supplies</b>				<b>\$176,604.44</b>
<b>700 <u>Property</u></b>				
762 Capitalized Equipment - Replacement				18,630.00
<b>Total Property</b>				<b>\$18,630.00</b>
<b>800 <u>Other Objects</u></b>				
810 Dues and Fees				20,354.49
<b>Total Other Objects</b>				<b>\$20,354.49</b>
<b>Total 3200 Student Activities</b>				<b>\$1,135,970.26</b>

LEA : 113362403     Elizabethtown Area SD

Printed 11/20/2020 7:47:19 AM

General Fund (10)				
3300 Community Services	<u>Elementary</u>	<u>Secondary</u>	<u>Federal</u>	<u>Total</u>
100 <u>Personnel Services – Salaries</u>				
100 Personnel Services – Salaries				10,173.82
Total Personnel Services – Salaries				\$10,173.82
200 <u>Personnel Services – Employee Benefits</u>				
220 Social Security Contributions				2,992.93
Total Personnel Services – Employee Benefits				\$2,992.93
300 <u>Purchased Professional and Technical Services</u>				
390 Other Purchased Professional and Technical Services				26,014.90
Total Purchased Professional and Technical Services				\$26,014.90
800 <u>Other Objects</u>				
810 Dues and Fees				28,949.49
860 Grants To Municipal and Community Service Organizations				13,540.00
Total Other Objects				\$42,489.49
Total 3300 Community Services				\$81,671.14

LEA : 113362403     Elizabethtown Area SD

Printed 11/20/2020 7:47:31 AM

General Fund (10)

5000 Other Expenditures and Financing Uses		<u>Total</u>
800 <u>Other Objects</u>		
880 Refunds of Prior Years' Receipts	2,308.56	
Total Other Objects	\$2,308.56	
900 <u>Other Uses of Funds</u>		
932 Capital Reserve Fund Transfers Applicable To Fund 32	350,000.00	
939 Other Fund Transfers	3,898,104.78	
Total Other Uses of Funds	\$4,248,104.78	
Total 5000 Other Expenditures and Financing Uses	\$4,250,413.34	

LEA : 113362403     Elizabethtown Area SD

Printed 11/20/2020 7:47:31 AM

General Fund (10)

5100 Debt Service / Other Expenditures and Financing Uses	<u>Elementary</u>	<u>Secondary</u>	<u>Federal</u>	<u>Total</u>
800 <u>Other Objects</u>				
880 Refunds of Prior Years' Receipts				2,308.56
Total Other Objects				\$2,308.56
Total 5100 Debt Service / Other Expenditures and Financing Uses				\$2,308.56

LEA : 113362403     Elizabethtown Area SD

Printed 11/20/2020 7:47:31 AM

General Fund (10)

5130 Refund of Prior Year Revenues / Receipts	<u>Elementary</u>	<u>Secondary</u>	<u>Federal</u>	<u>Total</u>
800 <u>Other Objects</u>				
880 Refunds of Prior Years' Receipts				2,308.56
Total Other Objects				\$2,308.56
Total 5130 Refund of Prior Year Revenues / Receipts				\$2,308.56

LEA : 113362403     Elizabethtown Area SD

Printed 11/20/2020 7:47:31 AM

General Fund (10)

5200 Interfund Transfers – Out	<u>Elementary</u>	<u>Secondary</u>	<u>Federal</u>	<u>Total</u>
900 <u>Other Uses of Funds</u>				
932 Capital Reserve Fund Transfers Applicable To Fund 32				350,000.00
939 Other Fund Transfers				3,898,104.78
<b>Total Other Uses of Funds</b>				<b>\$4,248,104.78</b>
<b>Total 5200 Interfund Transfers – Out</b>				<b>\$4,248,104.78</b>



LEA : 113362403     Elizabethtown Area SD

Printed 11/20/2020 7:47:31 AM

General Fund (10)

5230 Capital Projects Fund Transfers	<u>Elementary</u>	<u>Secondary</u>	<u>Federal</u>	<u>Total</u>
900 <u>Other Uses of Funds</u>				
932 Capital Reserve Fund Transfers Applicable To Fund 32				350,000.00
Total Other Uses of Funds				\$350,000.00
Total 5230 Capital Projects Fund Transfers				\$350,000.00

LEA : 113362403     Elizabethtown Area SD

Printed 11/20/2020 7:47:31 AM

General Fund (10)

5240 Debt Service Fund Transfers	<u>Elementary</u>	<u>Secondary</u>	<u>Federal</u>	<u>Total</u>
900 <u>Other Uses of Funds</u>				
939 Other Fund Transfers				3,889,596.19
Total Other Uses of Funds				\$3,889,596.19
Total 5240 Debt Service Fund Transfers				\$3,889,596.19

LEA : 113362403     Elizabethtown Area SD

Printed 11/20/2020 7:47:31 AM

General Fund (10)

5250 Enterprise Fund Transfers	<u>Elementary</u>	<u>Secondary</u>	<u>Federal</u>	<u>Total</u>
900 <u>Other Uses of Funds</u>				
939 Other Fund Transfers				8,508.59
Total Other Uses of Funds				\$8,508.59
Total 5250 Enterprise Fund Transfers				\$8,508.59

LEA : 113362403     Elizabethtown Area SD

Printed 11/20/2020 7:47:12 AM

Capital Reserve Fund - § 1431 (32)

		<u>Total</u>
2000 Support Services		
400 <u>Purchased Property Services</u>		
430	Repairs and Maintenance Services	10,191.91
Total Purchased Property Services		\$10,191.91
700 <u>Property</u>		
752	Capital Equipment – Original and Additional	35,701.42
Total Property		\$35,701.42
Total 2000 Support Services		\$45,893.33

LEA : 113362403     Elizabethtown Area SD

Printed 11/20/2020 7:47:12 AM

Capital Reserve Fund - § 1431 (32)

2600 Operation and Maintenance of Plant Services	<u>Elementary</u>	<u>Secondary</u>	<u>Federal</u>	<u>Total</u>
400 <u>Purchased Property Services</u>				
430 Repairs and Maintenance Services				10,191.91
Total Purchased Property Services				\$10,191.91
700 <u>Property</u>				
752 Capital Equipment – Original and Additional				35,701.42
Total Property				\$35,701.42
Total 2600 Operation and Maintenance of Plant Services				\$45,893.33

LEA : 113362403     Elizabethtown Area SD

Printed 11/20/2020 7:47:12 AM

Capital Reserve Fund - § 1431 (32)

2630 Care and Upkeep of Grounds Services

Elementary

Secondary

Federal

Total

700 Property

752 Capital Equipment – Original and Additional

4,001.42

<b>Total Property</b>				<b>\$4,001.42</b>
<b>Total 2630 Care and Upkeep of Grounds Services</b>				<b>\$4,001.42</b>

LEA : 113362403     Elizabethtown Area SD

Printed 11/20/2020 7:47:12 AM

Capital Reserve Fund - § 1431 (32)				
2650 Vehicle Operation and Maintenance Services (Other Than Student Transportation Vehicles)	<u>Elementary</u>	<u>Secondary</u>	<u>Federal</u>	<u>Total</u>
700 <u>Property</u>				
752 Capital Equipment – Original and Additional				31,700.00
Total Property				\$31,700.00
Total 2650 Vehicle Operation and Maintenance Services (Other Than Student Transportation Vehicles)				\$31,700.00

LEA : 113362403     Elizabethtown Area SD

Printed 11/20/2020 7:47:12 AM

Capital Reserve Fund - § 1431 (32)

2690 Other Operation and Maintenance of Plant Services

<u>Elementary</u>	<u>Secondary</u>	<u>Federal</u>	<u>Total</u>
-------------------	------------------	----------------	--------------

400 Purchased Property Services

430 Repairs and Maintenance Services			10,191.91
--------------------------------------	--	--	-----------

Total Purchased Property Services			\$10,191.91
-----------------------------------	--	--	-------------

Total 2690 Other Operation and Maintenance of Plant Services			\$10,191.91
--	--	--	-------------



LEA : 113362403     Elizabethtown Area SD

Printed 11/20/2020 7:47:24 AM

Capital Reserve Fund - § 1431 (32)

4000 Facilities Acquisition, Construction and Improvement Services

Total

400 <u>Purchased Property Services</u>	
430 Repairs and Maintenance Services	152,847.78
Total Purchased Property Services	\$152,847.78
600 <u>Supplies</u>	
610 General Supplies	24,770.00
Total Supplies	\$24,770.00
700 <u>Property</u>	
752 Capital Equipment – Original and Additional	193,585.45
Total Property	\$193,585.45
Total 4000 Facilities Acquisition, Construction and Improvement Services	\$371,203.23

LEA : 113362403     Elizabethtown Area SD

Printed 11/20/2020 7:47:24 AM

<b>Capital Reserve Fund - § 1431 (32)</b>				
<b>4600 Existing Building Improvement Services</b>	<b><u>Elementary</u></b>	<b><u>Secondary</u></b>	<b><u>Federal</u></b>	<b><u>Total</u></b>
<b>400 <u>Purchased Property Services</u></b>				
430 Repairs and Maintenance Services				152,847.78
<b>Total Purchased Property Services</b>				<b>\$152,847.78</b>
<b>600 <u>Supplies</u></b>				
610 General Supplies				24,770.00
<b>Total Supplies</b>				<b>\$24,770.00</b>
<b>700 <u>Property</u></b>				
752 Capital Equipment – Original and Additional				193,585.45
<b>Total Property</b>				<b>\$193,585.45</b>
<b>Total 4600 Existing Building Improvement Services</b>				<b>\$371,203.23</b>

LEA : 113362403     Elizabethtown Area SD

Printed 11/20/2020 7:46:58 AM

Other Capital Projects Fund (39)

1000 Instruction		<u>Total</u>
700 <u>Property</u>		
752 Capital Equipment – Original and Additional		983.83
Total Property		\$983.83
Total 1000 Instruction		\$983.83

LEA : 113362403     Elizabethtown Area SD

Printed 11/20/2020 7:46:58 AM

Other Capital Projects Fund (39)

1100 Regular Programs – Elementary / Secondary	<u>Elementary</u>	<u>Secondary</u>	<u>Federal</u>	<u>Total</u>
700 <u>Property</u>				
752 Capital Equipment – Original and Additional	983.83			983.83
Total Property	\$983.83			\$983.83
Total 1100 Regular Programs – Elementary / Secondary	\$983.83			\$983.83

LEA : 113362403     Elizabethtown Area SD

Printed 11/20/2020 7:46:58 AM

Other Capital Projects Fund (39)

1110 Regular Programs

	<u>Elementary</u>	<u>Secondary</u>	<u>Federal</u>	<u>Total</u>
700 <u>Property</u>				
752 Capital Equipment – Original and Additional	983.83			983.83
<b>Total Property</b>	<b>\$983.83</b>			<b>\$983.83</b>
<b>Total 1110 Regular Programs</b>	<b>\$983.83</b>			<b>\$983.83</b>

Other Capital Projects Fund (39)

2000 Support Services		<u>Total</u>
300 <u>Purchased Professional and Technical Services</u>		
390 Other Purchased Professional and Technical Services	150,373.00	
Total Purchased Professional and Technical Services	\$150,373.00	
600 <u>Supplies</u>		
620 Energy	380.00	
Total Supplies	\$380.00	
Total 2000 Support Services	\$150,753.00	

LEA : 113362403     Elizabethtown Area SD

Printed 11/20/2020 7:47:14 AM

Other Capital Projects Fund (39)

2300 Support Services – Administration

Elementary                      Secondary                      Federal                      Total

300 Purchased Professional and Technical Services

390 Other Purchased Professional and Technical Services 150,373.00

**Total Purchased Professional and Technical Services \$150,373.00**

**Total 2300 Support Services – Administration \$150,373.00**

LEA : 113362403     Elizabethtown Area SD

Printed 11/20/2020 7:47:14 AM

Other Capital Projects Fund (39)

2390 Other Administration Services

	<u>Elementary</u>	<u>Secondary</u>	<u>Federal</u>	<u>Total</u>
300 <u>Purchased Professional and Technical Services</u>				
390 Other Purchased Professional and Technical Services				150,373.00
<b>Total Purchased Professional and Technical Services</b>				<b>\$150,373.00</b>
<b>Total 2390 Other Administration Services</b>				<b>\$150,373.00</b>



LEA : 113362403     Elizabethtown Area SD

Printed 11/20/2020 7:47:14 AM

Other Capital Projects Fund (39)

2600 Operation and Maintenance of Plant Services

Elementary                      Secondary                      Federal                      Total

600 <u>Supplies</u>				
620 Energy				380.00

Total Supplies				\$380.00
Total 2600 Operation and Maintenance of Plant Services				\$380.00

LEA : 113362403     Elizabethtown Area SD

Printed 11/20/2020 7:47:14 AM

Other Capital Projects Fund (39)

2620 Operation of Buildings Services

Elementary                      Secondary                      Federal                      Total

600 <u>Supplies</u>				
620 Energy				380.00

Total Supplies				\$380.00
Total 2620 Operation of Buildings Services				\$380.00

LEA : 113362403     Elizabethtown Area SD

Printed 11/20/2020 7:47:25 AM

Other Capital Projects Fund (39)

4000 Facilities Acquisition, Construction and Improvement Services

Total

300 Purchased Professional and Technical Services

330 Other Professional Services	476,616.35
---------------------------------	------------

<b>Total Purchased Professional and Technical Services</b>	<b>\$476,616.35</b>
--	---------------------

400 Purchased Property Services

430 Repairs and Maintenance Services	21,034.00
--------------------------------------	-----------

450 Construction Services	608,769.00
---------------------------	------------

490 Other Purchased Property Services	32,157.50
---------------------------------------	-----------

<b>Total Purchased Property Services</b>	<b>\$661,960.50</b>
--	---------------------

500 Other Purchased Services

520 Insurance – General	6,662.00
-------------------------	----------

<b>Total Other Purchased Services</b>	<b>\$6,662.00</b>
---------------------------------------	-------------------

600 Supplies

610 General Supplies	2,072.00
----------------------	----------

<b>Total Supplies</b>	<b>\$2,072.00</b>
-----------------------	-------------------

<b>Total 4000 Facilities Acquisition, Construction and Improvement Services</b>	<b>\$1,147,310.85</b>
---	-----------------------

LEA : 113362403     Elizabethtown Area SD

Printed 11/20/2020 7:47:25 AM

Other Capital Projects Fund (39)

4300 Architecture and Engineering Services / Educational Specifications Development – Original and Additional	<u>Elementary</u>	<u>Secondary</u>	<u>Federal</u>	<u>Total</u>
300 <u>Purchased Professional and Technical Services</u>				
330 Other Professional Services				41,568.35
Total Purchased Professional and Technical Services				\$41,568.35
Total 4300 Architecture and Engineering Services / Educational Specifications Development – Original and Additional				\$41,568.35

LEA : 113362403     Elizabethtown Area SD

Printed 11/20/2020 7:47:25 AM

Other Capital Projects Fund (39)

4400 Architecture and Engineering Services / Educational Specifications – Improvements

Elementary

Secondary

Federal

Total

300 Purchased Professional and Technical Services

330 Other Professional Services

435,048.00

**Total Purchased Professional and Technical Services**

**\$435,048.00**

**Total 4400 Architecture and Engineering Services / Educational Specifications – Improvements**

**\$435,048.00**

LEA : 113362403     Elizabethtown Area SD

Printed 11/20/2020 7:47:25 AM

Other Capital Projects Fund (39)

4600 Existing Building Improvement Services

Elementary                      Secondary                      Federal                      Total

400 <u>Purchased Property Services</u>				
430 Repairs and Maintenance Services				21,034.00
450 Construction Services				608,769.00
490 Other Purchased Property Services				32,157.50
<b>Total Purchased Property Services</b>				<b>\$661,960.50</b>
500 <u>Other Purchased Services</u>				
520 Insurance – General				6,662.00
<b>Total Other Purchased Services</b>				<b>\$6,662.00</b>
600 <u>Supplies</u>				
610 General Supplies				2,072.00
<b>Total Supplies</b>				<b>\$2,072.00</b>
<b>Total 4600 Existing Building Improvement Services</b>				<b>\$670,694.50</b>

LEA : 113362403     Elizabethtown Area SD

Printed 11/20/2020 7:47:33 AM

Other Capital Projects Fund (39)

5000 Other Expenditures and Financing Uses

Total

800 <u>Other Objects</u>	
830 Interest	5,350.00
Total Other Objects	\$5,350.00
Total 5000 Other Expenditures and Financing Uses	\$5,350.00

LEA : 113362403     Elizabethtown Area SD

Printed 11/20/2020 7:47:33 AM

Other Capital Projects Fund (39)

5100 Debt Service / Other Expenditures and Financing Uses	<u>Elementary</u>	<u>Secondary</u>	<u>Federal</u>	<u>Total</u>
800 <u>Other Objects</u>				
830 Interest				5,350.00
Total Other Objects				\$5,350.00
Total 5100 Debt Service / Other Expenditures and Financing Uses				\$5,350.00



LEA : 113362403     Elizabethtown Area SD

Printed 11/20/2020 7:47:33 AM

Other Capital Projects Fund (39)

5120 Debt Service – Refunded Bonds	<u>Elementary</u>	<u>Secondary</u>	<u>Federal</u>	<u>Total</u>
800 <u>Other Objects</u>				
830 Interest				5,350.00
Total Other Objects				\$5,350.00
Total 5120 Debt Service – Refunded Bonds				\$5,350.00

LEA : 113362403     Elizabethtown Area SD

Printed 11/20/2020 7:47:16 AM

Debt Service Fund (40)

2000 Support Services

Total

300 <u>Purchased Professional and Technical Services</u>	
390 Other Purchased Professional and Technical Services	149,595.00
<b>Total Purchased Professional and Technical Services</b>	<b>\$149,595.00</b>
<b>Total 2000 Support Services</b>	<b>\$149,595.00</b>

LEA : 113362403     Elizabethtown Area SD

Printed 11/20/2020 7:47:16 AM

Debt Service Fund (40)

2300 Support Services – Administration

<u>Elementary</u>	<u>Secondary</u>	<u>Federal</u>	<u>Total</u>
-------------------	------------------	----------------	--------------

300 Purchased Professional and Technical Services

390 Other Purchased Professional and Technical Services			149,595.00
---	--	--	------------

<b>Total Purchased Professional and Technical Services</b>			<b>\$149,595.00</b>
--	--	--	---------------------

<b>Total 2300 Support Services – Administration</b>			<b>\$149,595.00</b>
---	--	--	---------------------

LEA : 113362403     Elizabethtown Area SD

Printed 11/20/2020 7:47:16 AM

Debt Service Fund (40)

2390 Other Administration Services

	<u>Elementary</u>	<u>Secondary</u>	<u>Federal</u>	<u>Total</u>
300 <u>Purchased Professional and Technical Services</u>				
390 Other Purchased Professional and Technical Services				149,595.00
Total Purchased Professional and Technical Services				\$149,595.00
Total 2390 Other Administration Services				\$149,595.00

LEA : 113362403     Elizabethtown Area SD

Printed 11/20/2020 7:47:34 AM

Debt Service Fund (40)

5000 Other Expenditures and Financing Uses

Total

800 <u>Other Objects</u>	
830 Interest	1,655,586.25
Total Other Objects	\$1,655,586.25
900 <u>Other Uses of Funds</u>	
910 Redemption of Principal	10,580,000.00
Total Other Uses of Funds	\$10,580,000.00
Total 5000 Other Expenditures and Financing Uses	\$12,235,586.25

LEA : 113362403     Elizabethtown Area SD

Printed 11/20/2020 7:47:34 AM

Debt Service Fund (40)

5100 Debt Service / Other Expenditures and Financing Uses	<u>Elementary</u>	<u>Secondary</u>	<u>Federal</u>	<u>Total</u>
800 <u>Other Objects</u>				
830 Interest				1,655,586.25
Total Other Objects				\$1,655,586.25
900 <u>Other Uses of Funds</u>				
910 Redemption of Principal				10,580,000.00
Total Other Uses of Funds				\$10,580,000.00
Total 5100 Debt Service / Other Expenditures and Financing Uses				\$12,235,586.25

LEA : 113362403     Elizabethtown Area SD

Printed 11/20/2020 7:47:34 AM

Debt Service Fund (40)

5110 Debt Service	<u>Elementary</u>	<u>Secondary</u>	<u>Federal</u>	<u>Total</u>
800 <u>Other Objects</u>				
830 Interest				1,655,586.25
Total Other Objects				\$1,655,586.25
900 <u>Other Uses of Funds</u>				
910 Redemption of Principal				2,290,000.00
Total Other Uses of Funds				\$2,290,000.00
Total 5110 Debt Service				\$3,945,586.25

LEA : 113362403     Elizabethtown Area SD

Printed 11/20/2020 7:47:34 AM

Debt Service Fund (40)

5120 Debt Service – Refunded Bonds

<u>Elementary</u>	<u>Secondary</u>	<u>Federal</u>	<u>Total</u>
-------------------	------------------	----------------	--------------

900 Other Uses of Funds

910 Redemption of Principal			8,290,000.00
-----------------------------	--	--	--------------

Total Other Uses of Funds				\$8,290,000.00
Total 5120 Debt Service – Refunded Bonds				\$8,290,000.00



	<u>General Fund(10)</u>	<u>Student Sponsored Activity Fund(21)</u>	<u>Public Purpose Trust(27)</u>	<u>Other Compt Approved (28)</u>	<u>Athletic / Activity(29)</u>
<b>1000 <u>Instruction</u></b>					
1100 Regular Programs - Elementary / Secondary	29,476,222.02				
1200 Special Programs - Elementary / Secondary	9,357,132.22				
1300 Vocational Education	1,355,856.82				
1400 Other Instructional Programs - Elementary / Secondary	310,104.50				
1500 Nonpublic School Programs	29,782.83				
<b>Total Instruction</b>	<b>\$40,529,098.39</b>				
<b>2000 <u>Support Services</u></b>					
2100 Support Services - Students	2,474,972.60				
2200 Support Services - Instructional Staff	1,060,130.73				
2300 Support Services - Administration	3,932,703.41				
2400 Support Services - Pupil Health	834,295.12				
2500 Support Services - Business	1,073,285.63				
2600 Operation and Maintenance of Plant Services	4,635,631.15				
2700 Student Transportation Services	2,318,268.56				
2800 Support Services - Central	1,584,612.82				
2900 Other Support Services	25,495.06				
<b>Total Support Services</b>	<b>\$17,939,395.08</b>				
<b>3000 <u>Operation of Non-Instructional Services</u></b>					
3200 Student Activities	1,135,970.26				
3300 Community Services	81,671.14				
<b>Total Operation of Non-Instructional Services</b>	<b>\$1,217,641.40</b>				
<b>4000 <u>Facilities Acquisition, Construction and Improvement Services</u></b>					
4300 Architecture and Engineering Services / Educational Specifications Development - Original and Additional					
4400 Architecture and Engineering Services / Educational Specifications - Improvements					
4600 Existing Building Improvement Services					
<b>Total Facilities Acquisition, Construction and Improvement Services</b>					
<b>5000 <u>Other Expenditures and Financing Uses</u></b>					
5100 Debt Service / Other Expenditures and Financing Uses	2,308.56				
5200 Interfund Transfers - Out	4,248,104.78				
<b>Total Other Expenditures and Financing Uses</b>	<b>\$4,250,413.34</b>				
<b>TOTAL ACTUAL EXPENDITURES &amp; OTHER FINANCING USES</b>	<b>\$63,936,548.21</b>				

LEA : 113362403     Elizabethtown Area SD

Printed 11/20/2020 7:47:47 AM

	<u>Capital Reserve (690.1850)(31)</u>	<u>Capital Reserve (1431)(32)</u>	<u>Other Capital Projects Fund(39)</u>	<u>Debt Service(40)</u>	<u>Permanent(90)</u>
<b>1000 <u>Instruction</u></b>					
1100 Regular Programs - Elementary / Secondary			983.83		
1200 Special Programs - Elementary / Secondary					
1300 Vocational Education					
1400 Other Instructional Programs - Elementary / Secondary					
1500 Nonpublic School Programs					
<b>Total Instruction</b>			<b>\$983.83</b>		
<b>2000 <u>Support Services</u></b>					
2100 Support Services - Students					
2200 Support Services - Instructional Staff					
2300 Support Services - Administration			150,373.00	149,595.00	
2400 Support Services - Pupil Health					
2500 Support Services - Business					
2600 Operation and Maintenance of Plant Services		45,893.33	380.00		
2700 Student Transportation Services					
2800 Support Services - Central					
2900 Other Support Services					
<b>Total Support Services</b>		<b>\$45,893.33</b>	<b>\$150,753.00</b>	<b>\$149,595.00</b>	
<b>3000 <u>Operation of Non-Instructional Services</u></b>					
3200 Student Activities					
3300 Community Services					
<b>Total Operation of Non-Instructional Services</b>					
<b>4000 <u>Facilities Acquisition, Construction and Improvement Services</u></b>					
4300 Architecture and Engineering Services / Educational Specifications Development - Original and Additional			41,568.35		
4400 Architecture and Engineering Services / Educational Specifications - Improvements			435,048.00		
4600 Existing Building Improvement Services		371,203.23	670,694.50		
<b>Total Facilities Acquisition, Construction and Improvement Services</b>		<b>\$371,203.23</b>	<b>\$1,147,310.85</b>		
<b>5000 <u>Other Expenditures and Financing Uses</u></b>					
5100 Debt Service / Other Expenditures and Financing Uses			5,350.00	12,235,586.25	
5200 Interfund Transfers - Out					
<b>Total Other Expenditures and Financing Uses</b>			<b>\$5,350.00</b>	<b>\$12,235,586.25</b>	
<b>TOTAL ACTUAL EXPENDITURES &amp; OTHER FINANCING USES</b>		<b>\$417,096.56</b>	<b>\$1,304,397.68</b>	<b>\$12,385,181.25</b>	

LEA : 113362403     Elizabethtown Area SD

Printed 11/20/2020 7:47:47 AM

	<u>Total</u>
<b>1000 <u>Instruction</u></b>	
1100 Regular Programs - Elementary / Secondary	29,477,205.85
1200 Special Programs - Elementary / Secondary	9,357,132.22
1300 Vocational Education	1,355,856.82
1400 Other Instructional Programs - Elementary / Secondary	310,104.50
1500 Nonpublic School Programs	29,782.83
<b>Total Instruction</b>	<b>\$40,530,082.22</b>
<b>2000 <u>Support Services</u></b>	
2100 Support Services - Students	2,474,972.60
2200 Support Services - Instructional Staff	1,060,130.73
2300 Support Services - Administration	4,232,671.41
2400 Support Services - Pupil Health	834,295.12
2500 Support Services - Business	1,073,285.63
2600 Operation and Maintenance of Plant Services	4,681,904.48
2700 Student Transportation Services	2,318,268.56
2800 Support Services - Central	1,584,612.82
2900 Other Support Services	25,495.06
<b>Total Support Services</b>	<b>\$18,285,636.41</b>
<b>3000 <u>Operation of Non-Instructional Services</u></b>	
3200 Student Activities	1,135,970.26
3300 Community Services	81,671.14
<b>Total Operation of Non-Instructional Services</b>	<b>\$1,217,641.40</b>
<b>4000 <u>Facilities Acquisition, Construction and Improvement Services</u></b>	
4300 Architecture and Engineering Services / Educational Specifications Development - Original and Additional	41,568.35
4400 Architecture and Engineering Services / Educational Specifications - Improvements	435,048.00
4600 Existing Building Improvement Services	1,041,897.73
<b>Total Facilities Acquisition, Construction and Improvement Services</b>	<b>\$1,518,514.08</b>
<b>5000 <u>Other Expenditures and Financing Uses</u></b>	
5100 Debt Service / Other Expenditures and Financing Uses	12,243,244.81
5200 Interfund Transfers - Out	4,248,104.78
<b>Total Other Expenditures and Financing Uses</b>	<b>\$16,491,349.59</b>
<b>TOTAL ACTUAL EXPENDITURES &amp; OTHER FINANCING USES</b>	<b>\$78,043,223.70</b>

LEA : 113362403     Elizabethtown Area SD

Printed 11/20/2020 7:47:54 AM

PSERS Salary Data (Salary Data should relate to the General Fund only)

Amount	Description	Amount
	Total Salary Base for salaries subject to PSERS withholding	27,743,162.17
	Total Federally Funded salaries subject to PSERS withholding	702,180.05

Title I Expenditure Data

Amount	Description	Amount
	Expenditures Funded with Current Title I Funds	476,367.14
	Expenditures Funded with Carry over Title I Funds	
Total	Title I Expenditure Data	\$476,367.14

Benefits for Staff Relative to Collective Bargaining Agreements

	OBJECT	COVERED	NOT COVERED	TOTAL
10 General Fund				
	211 Medical Insurance			
	212 Dental Insurance			
	215 Eye Care Insurance			
	216 Prescription Insurance			
	271 Self-Insurance Medical Benefits	3,615,398.20	1,141,704.70	4,757,102.90
	272 Self-Insurance Dental Benefits	232,131.98	77,377.33	309,509.31
	275 Self-Insurance Eye Care Benefits	67,229.07	21,230.23	88,459.30
	276 Self-Insurance Prescription Benefits			
	FUND TOTAL	\$3,914,759.25	\$1,240,312.26	\$5,155,071.51
50 Enterprise Fund	No Self Insurance data to report			
	211 Medical Insurance			
	212 Dental Insurance			
	215 Eye Care Insurance			
	216 Prescription Insurance			
	271 Self-Insurance Medical Benefits			
	272 Self-Insurance Dental Benefits			
	275 Self-Insurance Eye Care Benefits			
	276 Self-Insurance Prescription Benefits			
	FUND TOTAL			
60 Internal Service Fund	No Self Insurance data to report			
	211 Medical Insurance			
	212 Dental Insurance			
	215 Eye Care Insurance			
	216 Prescription Insurance			
	271 Self-Insurance Medical Benefits			
	272 Self-Insurance Dental Benefits			
	275 Self-Insurance Eye Care Benefits			
	276 Self-Insurance Prescription Benefits			
	FUND TOTAL			
Total of All Funds		\$3,914,759.25	\$1,240,312.26	\$5,155,071.51

LEA : 113362403     Elizabethtown Area SD

Printed 11/20/2020 7:48:00 AM

Function	Special Education (Prior Year)	Nonspecial Education (Prior Year)	Total (Prior Year)	Special Education (Current Year)	Nonspecial Education (Current Year)	Total (Current Year)
2120 Guidance Services	161,667.23	848,752.95	1,010,420.18	216,114.06	1,134,598.80	1,350,712.86
2140 Psychological Services	86,913.61	456,296.48	543,210.09	86,009.09	451,547.74	537,556.83
2150 Speech Pathology and Audiology Services						
2160 Social Work Services	23,489.01	123,317.28	146,806.29	29,088.51	152,714.70	181,803.21
2260 Instruction and Curriculum Development Services	2,200.30	2,745.58	4,945.88	2,274.82	11,942.78	14,217.60
2350 Legal and Accounting Services	4,341.37	22,792.18	27,133.55	5,580.08	29,295.42	34,875.50
2420 Medical Services	505.01	2,651.31	3,156.32	613.34	3,220.06	3,833.40
2440 Nursing Services	128,631.89	675,317.43	803,949.32	163,442.21	666,446.60	829,888.81
2700 Student Transportation Services	423,286.41	2,222,253.64	2,645,540.05	368,906.42	1,881,663.47	2,250,569.89
Total	\$831,034.83	\$4,354,126.85	\$5,185,161.68	\$872,028.53	\$4,331,429.57	\$5,203,458.10

LEA : 113362403     Elizabethtown Area SD

Printed 11/20/2020 7:48:05 AM

(PRINCIPAL AMOUNTS ONLY)								
<u>GOVERNMENTAL FUNDS/ ACTIVITIES</u>	Short-Term Borrowing	General Obligation Bonds/Notes	Authority Building Obligations	Other Long-Term Debt	Other Post- Employment Benefits (OPEB)	Compensated Absences	Net Pension Liability	Total
1. Debt at Beginning of Fiscal Year		49,840,000.00			4,319,000.00	1,247,304.00	92,470,000.00	147,876,304.00
2. Additional Debt Incurred During Year		17,075,000.00			507,000.00	334,545.00		17,916,545.00
3. Retirements and Repayments		10,580,000.00				83,960.00	1,415,000.00	12,078,960.00
4. Debt at End of Fiscal Year		56,335,000.00			4,826,000.00	1,497,889.00	91,055,000.00	153,713,889.00
5. Accreted Interest at End Of Fiscal Year								
6. Total Debt and Accreted Interest		56,335,000.00			4,826,000.00	1,497,889.00	91,055,000.00	153,713,889.00
7. Current Portion P&I - Due within 1 year		2,330,270.00						2,330,270.00
8. Interest Paid during current fiscal year		1,408,146.25						1,408,146.25

(PRINCIPAL AMOUNTS ONLY)								
<u>PROPRIETARY FUNDS</u>	Short-Term Borrowing	General Obligation Bonds/Notes	Authority Building Obligations	Other Long-Term Debt	Other Post- Employment Benefits (OPEB)	Compensated Absences	Net Pension Liability	Total
1. Debt at Beginning of Fiscal Year					84,000.00		934,000.00	1,018,000.00
2. Additional Debt Incurred During Year					6,000.00			6,000.00
3. Retirements and Repayments							14,000.00	14,000.00
4. Debt at End of Fiscal Year					90,000.00		920,000.00	1,010,000.00
5. Accreted Interest at End Of Fiscal Year								
6. Total Debt and Accreted Interest					90,000.00		920,000.00	1,010,000.00
7. Current Portion P&I - Due within 1 year								
8. Interest Paid during current fiscal year								

LEA : 113362403     Elizabethtown Area SD

Printed 11/20/2020 7:48:05 AM

Total Principal and Interest Payments Made by Your School - All Funds

Function	Fund		Principal (910)	Principal (920)	Interest (830)	Total (Principal +Interest)	Misc Other Uses (990)
5110	10	General Fund					
5110	20	Special Revenue Funds					
5110	30	Capital Projects Funds					
5110	40	Debt Service Fund	2,290,000.00		1,655,586.25	3,945,586.25	
5110	90	Permanent Fund					
5120	10	General Fund					
5120	20	Special Revenue Funds					
5120	30	Capital Projects Funds			5,350.00	5,350.00	
5120	40	Debt Service Fund	8,290,000.00			8,290,000.00	
Total Debt Payments - Governmental Funds			\$10,580,000.00		\$1,660,936.25	\$12,240,936.25	

Function	Fund		Principal (910)	Principal (920)	Interest (830)	Total (Principal +Interest)
5110	50	Enterprise Fund				
5110	60	Internal Service Fund				
5120	50	Enterprise Fund				
5120	60	Internal Service Fund				
Total Debt Payments - Proprietary Funds						



LEA : 113362403     Elizabethtown Area SD

Printed 11/20/2020 7:48:05 AM

**Debt Details**  
**Governmental Funds/ Activities**

Debt Category	Debt Issue Date (MM/YYYY)	Principal Amounts Only				Current Portion Due Within One Year (Principal and Interest)	Interest Paid During Fiscal Year
		Debt at Beginning of Fiscal Year	Additions	Reductions / Repayments	Debt at End of Fiscal Year		
General Obligation Bonds/Notes – CIB	08/2019		8,000,000.00	830,000.00	7,170,000.00	774,025.00	143,542.77
General Obligation Bonds/Notes – CIB	09/2019		9,075,000.00		9,075,000.00	350,620.00	162,263.48
General Obligation Bonds/Notes – CIB	05/2017	9,520,000.00		5,000.00	9,515,000.00	194,016.25	378,063.75
General Obligation Bonds/Notes – CIB	12/2016	5,350,000.00		15,000.00	5,335,000.00	173,921.25	94,515.00
General Obligation Bonds/Notes – CIB	12/2016	4,490,000.00		50,000.00	4,440,000.00	197,787.50	158,425.00
General Obligation Bonds/Notes – CIB	06/2015	8,595,000.00		65,000.00	8,530,000.00	65,000.00	126,110.00
General Obligation Bonds/Notes – CIB	08/2015	7,545,000.00		65,000.00	7,480,000.00	70,000.00	215,022.50
General Obligation Bonds/Notes – CIB	10/2013	8,290,000.00		8,290,000.00			
General Obligation Bonds/Notes – CIB	03/2012	6,050,000.00		1,260,000.00	4,790,000.00	504,900.00	130,203.75
Compensated Absences		1,247,304.00	334,545.00	83,960.00	1,497,889.00		
Other Post-Employment Benefits (OPEB)		4,319,000.00	507,000.00		4,826,000.00		
Net Pension Liability		92,470,000.00		1,415,000.00	91,055,000.00		
<b>Totals for Debt Entered:</b>		<b>\$147,876,304.00</b>	<b>\$17,916,545.00</b>	<b>\$12,078,960.00</b>	<b>\$153,713,889.00</b>	<b>\$2,330,270.00</b>	<b>\$1,408,146.25</b>

**Bond Details**  
**Proprietary Funds**

Debt Category	Debt Issue Date (MM/YYYY)	Principal Amounts Only				Current Portion Due Within One Year (Principal and Interest)	Interest Paid During Fiscal Year
		Debt at Beginning of Fiscal Year	Additions	Reductions / Repayments	Debt at End of Fiscal Year		
Other Post-Employment Benefits (OPEB)		84,000.00	6,000.00		90,000.00		
Net Pension Liability		934,000.00		14,000.00	920,000.00		
<b>Totals for Debt Entered:</b>		<b>\$1,018,000.00</b>	<b>\$6,000.00</b>	<b>\$14,000.00</b>	<b>\$1,010,000.00</b>		

LEA : 113362403     Elizabethtown Area SD

Printed 11/20/2020 7:48:08 AM

**General Fund (10)**

Section 1: Tuition/Purchased Services as Reported within Expenditure Detail	Amount
Tuition Reported in General Fund Expenditures 1000-560	3,101,370.71
Purchased Services in General Fund Expenditures 1000-594 and 1000-597	690.98
<b>Section 1 Total</b>	<b>\$3,102,061.69</b>

Section 2: Tuition Paid to Institution Types During Fiscal Year	Tuition Paid For Nonspecial Education	Tuition Paid For Special Education	Total
1 1306 Institutions			
2 Institutionalized Children's Programs			
3 Juveniles Incarcerated in Adult Facilities			
4 Residential Treatment Facilities			
5 Other Local Education Agencies	36,762.52	420,169.91	456,932.43
6 Brick and Mortar Charter Schools			
7 Cyber Charter Schools	699,490.08	336,276.29	1,035,766.37
8 Career and Technology Centers	890,354.92		890,354.92
9 Approved Private Schools			
10 PA Chartered Schools for the Deaf and Blind			
11 Private Residential Rehabilitative Institutions	34,644.41	435,881.26	470,525.67
12 Juvenile Detention Centers			
13 Special Program Jointures			
14 Other Tuition Not Included Elsewhere In This Section	115,172.89	133,309.41	248,482.30
<b>Section 2 Total</b>	<b>\$1,776,424.82</b>	<b>\$1,325,636.87</b>	<b>\$3,102,061.69</b>

LEA : 113362403     Elizabethtown Area SD

Printed 11/20/2020 7:48:14 AM

Food Service / Cafeteria Operations Fund (51)

3000 Operation of Non-Instructional Services		Total
100 <u>Personnel Services – Salaries</u>		
100 Personnel Services – Salaries		224,078.00
Total Personnel Services – Salaries		\$224,078.00
200 <u>Personnel Services – Employee Benefits</u>		
210 Group Insurance – Contracted Provider		2,845.56
220 Social Security Contributions		10,500.00
270 Group Insurance – Self-Insurance		4,126.00
292 Health Savings Accounts		1,000.00
Total Personnel Services – Employee Benefits		\$18,471.56
400 <u>Purchased Property Services</u>		
430 Repairs and Maintenance Services		21,683.00
Total Purchased Property Services		\$21,683.00
500 <u>Other Purchased Services</u>		
530 Communications		1,277.69
570 Food Service Management		784,148.75
580 Travel		218.74
Total Other Purchased Services		\$785,645.18
600 <u>Supplies</u>		
610 General Supplies		13,972.93
630 Food		104,936.75
650 Supplies & Fees – Technology Related		9,623.38
Total Supplies		\$128,533.06
700 <u>Property</u>		
740 Depreciation		89.16
Total Property		\$89.16
800 <u>Other Objects</u>		
810 Dues and Fees		16,295.10
890 Miscellaneous Expenditures		8,509.00
Total Other Objects		\$24,804.10
Total 3000 Operation of Non-Instructional Services		\$1,203,304.06

LEA : 113362403     Elizabethtown Area SD

Printed 11/20/2020 7:48:14 AM

Food Service / Cafeteria Operations Fund (51)

3100 Food Services	Elementary	Secondary	Federal	Total
100 <u>Personnel Services – Salaries</u>				
100 Personnel Services – Salaries				224,078.00
<b>Total Personnel Services – Salaries</b>				<b>\$224,078.00</b>
200 <u>Personnel Services – Employee Benefits</u>				
210 Group Insurance – Contracted Provider				2,845.56
220 Social Security Contributions				10,500.00
270 Group Insurance – Self-Insurance				4,126.00
292 Health Savings Accounts				1,000.00
<b>Total Personnel Services – Employee Benefits</b>				<b>\$18,471.56</b>
400 <u>Purchased Property Services</u>				
430 Repairs and Maintenance Services				21,683.00
<b>Total Purchased Property Services</b>				<b>\$21,683.00</b>
500 <u>Other Purchased Services</u>				
530 Communications				1,277.69
570 Food Service Management				784,148.75
580 Travel				218.74
<b>Total Other Purchased Services</b>				<b>\$785,645.18</b>
600 <u>Supplies</u>				
610 General Supplies				13,972.93
630 Food				104,936.75
650 Supplies & Fees – Technology Related				9,623.38
<b>Total Supplies</b>				<b>\$128,533.06</b>
700 <u>Property</u>				
740 Depreciation				89.16
<b>Total Property</b>				<b>\$89.16</b>
800 <u>Other Objects</u>				
810 Dues and Fees				16,295.10
890 Miscellaneous Expenditures				8,509.00
<b>Total Other Objects</b>				<b>\$24,804.10</b>
<b>Total 3100 Food Services</b>				<b>\$1,203,304.06</b>

LEA : 113362403     Elizabethtown Area SD

Printed 11/20/2020 7:48:11 AM

Internal Service Fund (60)

2000 Support Services

Total

200	<u>Personnel Services – Employee Benefits</u>	
270	Group Insurance – Self-Insurance	4,811,462.34
292	Health Savings Accounts	511,164.00
Total Personnel Services – Employee Benefits		\$5,322,626.34
300	<u>Purchased Professional and Technical Services</u>	
330	Other Professional Services	126,329.90
Total Purchased Professional and Technical Services		\$126,329.90
500	<u>Other Purchased Services</u>	
520	Insurance – General	347,888.57
Total Other Purchased Services		\$347,888.57
Total 2000 Support Services		\$5,796,844.81

LEA : 113362403     Elizabethtown Area SD

Printed 11/20/2020 7:48:11 AM

Internal Service Fund (60)

2300 Support Services – Administration	<u>Elementary</u>	<u>Secondary</u>	<u>Federal</u>	<u>Total</u>
<b>200 <u>Personnel Services – Employee Benefits</u></b>				
270 Group Insurance – Self-Insurance				4,811,462.34
292 Health Savings Accounts				511,164.00
<b>Total Personnel Services – Employee Benefits</b>				<b>\$5,322,626.34</b>
<b>300 <u>Purchased Professional and Technical Services</u></b>				
330 Other Professional Services				126,329.90
<b>Total Purchased Professional and Technical Services</b>				<b>\$126,329.90</b>
<b>500 <u>Other Purchased Services</u></b>				
520 Insurance – General				347,888.57
<b>Total Other Purchased Services</b>				<b>\$347,888.57</b>
<b>Total 2300 Support Services – Administration</b>				<b>\$5,796,844.81</b>

LEA : 113362403     Elizabethtown Area SD

Printed 11/20/2020 7:48:11 AM

Internal Service Fund (60)

2390 Other Administration Services	<u>Elementary</u>	<u>Secondary</u>	<u>Federal</u>	<u>Total</u>
<b>200 <u>Personnel Services – Employee Benefits</u></b>				
270 Group Insurance – Self-Insurance				4,811,462.34
292 Health Savings Accounts				511,164.00
<b>Total Personnel Services – Employee Benefits</b>				<b>\$5,322,626.34</b>
<b>300 <u>Purchased Professional and Technical Services</u></b>				
330 Other Professional Services				126,329.90
<b>Total Purchased Professional and Technical Services</b>				<b>\$126,329.90</b>
<b>500 <u>Other Purchased Services</u></b>				
520 Insurance – General				347,888.57
<b>Total Other Purchased Services</b>				<b>\$347,888.57</b>
<b>Total 2390 Other Administration Services</b>				<b>\$5,796,844.81</b>

	<u>Food Service(51)</u>	<u>Child Care Operations(52)</u>	<u>Other Enterprise(58)</u>	<u>Internal Service(60)</u>	<u>Total</u>
<b>2000 <u>Support Services</u></b>					
2300 Support Services - Administration				5,796,844.81	5,796,844.81
<b>Total Support Services</b>				<b>\$5,796,844.81</b>	<b>\$5,796,844.81</b>
<b>3000 <u>Operation of Non-Instructional Services</u></b>					
3100 Food Services	1,203,304.06				1,203,304.06
<b>Total Operation of Non-Instructional Services</b>	<b>\$1,203,304.06</b>				<b>\$1,203,304.06</b>
<b>TOTAL ACTUAL EXPENDITURES &amp; OTHER FINANCING USES</b>	<b>\$1,203,304.06</b>			<b>\$5,796,844.81</b>	<b>\$7,000,148.87</b>



LEA : 113362403     Elizabethtown Area SD

Printed 11/20/2020 7:48:26 AM

Fund	School	School Number	Local Personnel	Local Nonpersonnel	State Personnel	State Nonpersonnel	Federal Personnel	Federal Nonpersonnel	Total	Explanation
10										
	Bainbridge El Sch	2555	1,794,438.37	367,535.57	807,015.36	165,292.30	64,986.59	13,310.51	3,212,578.70	
	Bear Creek School	8190	7,351,665.55	1,505,762.82	3,306,275.17	677,188.89	266,244.69	54,532.05	13,161,669.17	
	East High Street El Sch	2561	3,146,196.37	644,401.67	1,414,943.44	289,807.69	113,941.27	23,337.37	5,632,627.81	
	Elizabethtown Area MS	6862	5,161,975.73	1,057,272.14	2,321,502.80	475,488.53	186,943.85	38,289.70	9,241,472.75	
	Elizabethtown Area SHS	2562	9,889,176.04	2,025,493.89	4,447,473.43	910,928.29	358,142.06	73,354.40	17,704,568.11	
	Mill Road El Sch	2558	1,596,812.97	327,058.08	718,137.00	147,088.30	57,829.48	11,844.59	2,858,770.42	
	Rheems El Sch	2559	1,747,008.33	357,820.98	785,684.58	160,923.35	63,268.89	12,958.69	3,127,664.82	
Total			30,687,273.36	6,285,345.15	13,801,031.78	2,826,717.35	1,111,356.83	227,627.31	54,939,351.78	