

LEA Name : Elizabethtown Area SD
Address : 600 E High St
Elizabethtown , PA 17022

County : Lancaster
AUN Number : 113362403
LEA Type : SD

Annual Financial Report Accuracy Certification Statement

For Fiscal Year Ending

6/30/2021

Pennsylvania Department of Education

&

Office of Comptroller Operations

PDE-2056: Intermediate Unit

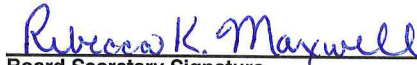
PDE-2057: School District, AVTS/CTC, Charter School,
and Special Program Jointure

CERTIFICATION: By signing this page I agree that the electronic data submitted is a complete and accurate statement of the financial operations and status of the local education agency for the fiscal year. It has been prepared in accordance with generally accepted accounting principles and established Commonwealth of PA reporting guidelines.



Chief School Administrator Signature

11/23/21
Date



Board Secretary Signature

11/23/21
Date

Daniel L Forry

Contact Person

dan_forry@etownschools.org

Contact Person E-mail Address

(717)367-1521

Ext :10009

Contact Person Telephone Number

Contact Person Fax Number

Audit Certification
Annual Financial Report:
For Fiscal Year Ending **6/30/2021**
(Pursuant to PA School Code Section 218(b))

LEA Name : Elizabethtown Area SD
AUN Number : 113362403
County : Lancaster

Audit Certification Due: 12/31/2021

This certification is applicable to the Annual Financial Report data submitted through the Consolidated Financial Reporting System (CFRS).

CERTIFICATION: By signing this page I agree that the financial statements of the school have been properly audited as noted above pursuant to Article XXIV, and in the auditor's professional opinion, the Annual Financial Report (PDE-2057) submitted through CFRS is materially consistent with the audited financial statements.

Chief School Administrator


Signature

11/23/21
Date

Board Secretary


Signature

11/23/21
Date

Daniel L Forry

Contact Person

dan_forry@etownschools.org

Contact Person E-mail Address

(717)367-1521

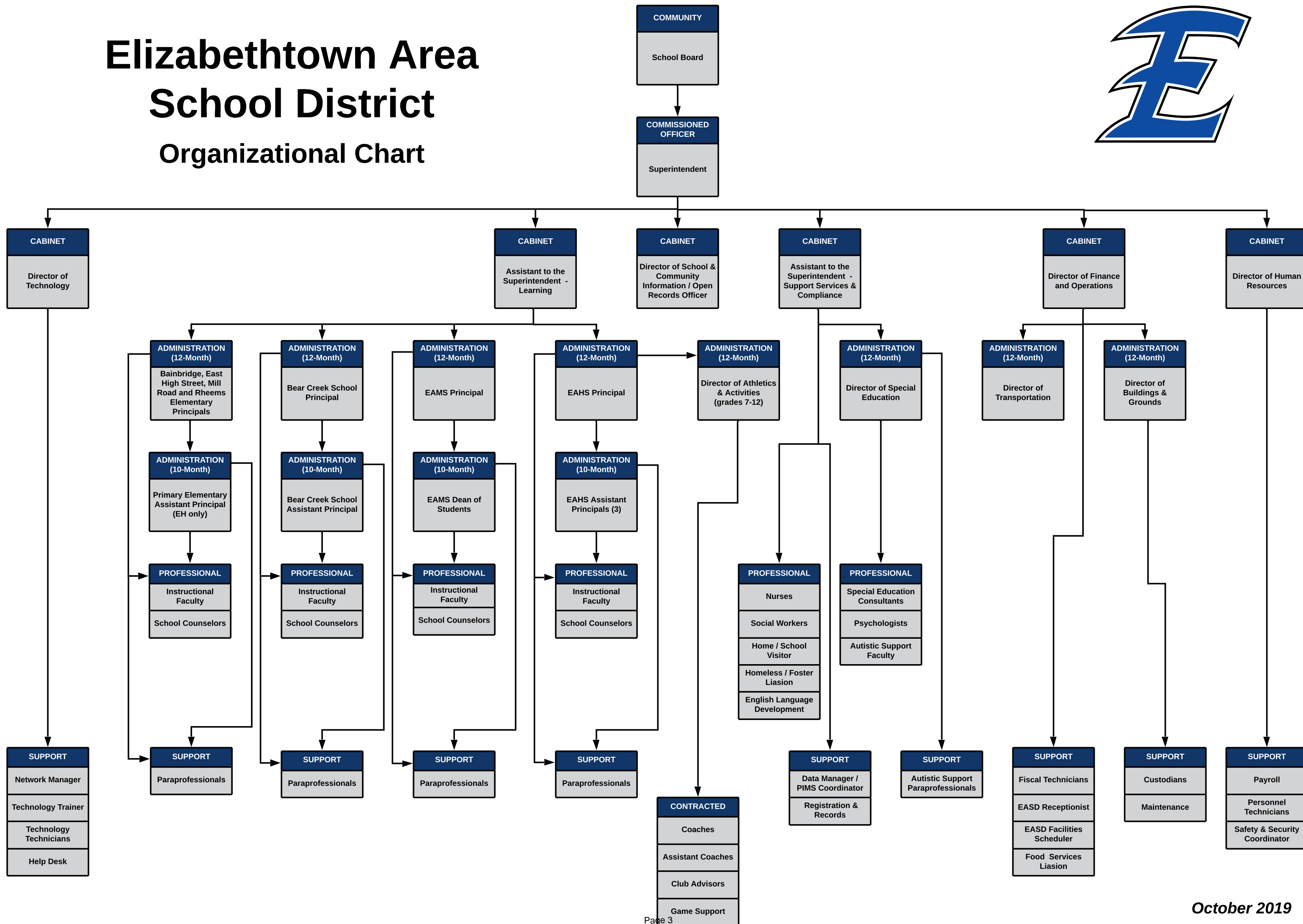
Ext :10009

Contact Person Telephone Number

Contact Person Fax Number

Elizabethtown Area School District

Organizational Chart





Book	Policy Manual
Section	600 Finances
Title	GASB Statement 34
Code	622
Status	Active
Legal	1. 24 P.S. 218 2. 24 P.S. 613 Governmental Accounting Standards Board, Statement No. 34
Adopted	March 15, 2016

Purpose

The Board recognizes the need to implement the required accounting and financial reporting standards stipulated by the Pennsylvania Department of Education and required by the Governmental Accounting Standards Board (GASB). GASB 34 directs that information be presented in a highly aggregated manner looking at the long-term financial health of the school district.

The primary objectives of implementing the Governmental Accounting Standards Board (GASB) Statement 34 are to assure compliance with state requirements, and properly account for both the financial and economic resources of the district.

Authority

Participation of the school district in any such activity shall be in accordance with Board policy.[\[1\]](#)[\[2\]](#)

Delegation of Responsibility

The Board delegates to the Business Manager, in cooperation with the approved independent auditor, the responsibility to coordinate the compilation and preparation of all information necessary to implement this policy in accordance with district administrative regulations.

The Business Manager shall prepare the required Management Discussion and Analysis (MD&A). The MD&A shall be in the form required by GASB Statement 34 and shall be submitted to the Board for approval, prior to publication.

Prior to submission of the MD&A for Board approval, the district's independent auditors shall review the MD&A, in accordance with SAS No. 52, "Required Supplementary Information".

Guidelines

Requirements

1. Capitalized Assets

A **capitalized asset** shall be any item acquired by donation or purchase that has a useful life of longer than one (1) year or extends the life of another capitalized asset or increases its value and meets a specific dollar threshold of at least \$5000. Assets will not be grouped for capitalization purposes. A dollar threshold for assets subject to this capitalization policy shall be set at an appropriate level. Management should periodically review these levels with assistance from the local independent auditor and make any modifications necessary.

At management's discretion, and in conjunction with the approved auditor, capital assets purchased with longer-term debt may be capitalized regardless of the specific dollar threshold for the type of class of asset acquired.

2. Value of Assets

All capitalized assets shall be recorded at historical cost at acquisition date or estimated cost.

Any donated capital asset shall be recorded at the date of donation using the fair market value of the item at that time.

3. Depreciation

Depreciation shall be based on the straight-line method of depreciation over the estimated useful life of each depreciable asset or group of assets. Periodically, management shall evaluate the estimated useful life of each depreciable asset to determine if revision of such estimate is required.

<u>Val Number</u>	<u>Description</u>	<u>Justification</u>
30685	Revenue Detail: Current Tax Revenue amount cannot exceed 50% variance from prior year amount. Correct the data or enter a justification. 6153, Current AFR Rev Detail: \$1,313,788.57 6153, Prior AFR Rev Detail: \$626,341.70	The district had a significant number of large commercial properties sold. Higher than anticipated. The result was \$687,446.87 increase from 2019-20, which was \$268,658.3 below budget in 2019-20.
41005	Expenditures have been reported in Function 1700 – Higher Education Programs for Secondary Students. Please confirm that these costs were for services provided to your school's secondary students. NOTE: Adult education programs and Community College sponsorship should be coded to Function 1600. Exp detail, Fund 10, Function 1700 total \$2,250.59	These cost were associated with secondary student dual enrollment fees as the district did not offer the course at the high school.
42330	Expenditure Detail: AFR amount must equal or exceed PDE FAI System amount. 1000-562, AFR Exp Detail: \$2,279,383.82 1000-562, PDE FAI System: \$2,422,966.17	With the COVID-19 pandemic, many of the 2019 -2020 cyber charter invoices were not processed (via deduction) in the PDE FAI system until the 2020-2021 fiscal year. The district accounted for these expenses in the applicable school year.

LEA : 113362403 Elizabethtown Area SD

Printed 11/23/2021 11:43:04 AM

Amounts Expressed in Whole Dollars		<u>General Fund</u> <u>(10)</u>	<u>Student Sponsored</u> <u>Activity Fund</u> <u>(21)</u>	<u>Public Purpose Trust</u> <u>(27)</u>	<u>Other Compt Approved</u> <u>(28)</u>	<u>Athletic / Activity</u> <u>(29)</u>
Assets And Deferred Outflows Of Resources						
Assets						
0100	Cash and Cash Equivalents	10,895,906				
0110	Investments	1,485,366				
0120	Taxes Receivable	1,530,553				
0130	Due From Other Funds	154,713				
0141	Due From Other Governments	3,666,199				
0142	State Revenue Receivable					
0143	Federal Revenue Receivable					
0145	Other Intergovernmental Revenue Receivable					
0146	Due from Primary Government					
0147	Due from Component Unit					
0150	Other Receivables	42,646				
0170	Inventories	131,430				
0180	Prepaid Expenses (Expenditures)	42,896				
0190	Other Current Assets					
Total Assets		\$17,949,709				
0910	Deferred Outflows of Resources					
Total Assets And Deferred Outflows Of Resources		\$17,949,709				

LEA : 113362403 Elizabethtown Area SD

Printed 11/23/2021 11:43:04 AM

Amounts Expressed in Whole Dollars		<u>Capital Reserve (690.</u> <u>1850)</u> <u>(31)</u>	<u>Capital Reserve (1431)</u> <u>(32)</u>	<u>Other Capital Projects</u> <u>Fund</u> <u>(39)</u>	<u>Debt Service</u> <u>(40)</u>	<u>Permanent</u> <u>(90)</u>
Assets And Deferred Outflows Of Resources						
Assets						
0100	Cash and Cash Equivalents		3,574,875	5,097,152		
0110	Investments		5			
0120	Taxes Receivable					
0130	Due From Other Funds					
0141	Due From Other Governments					
0142	State Revenue Receivable					
0143	Federal Revenue Receivable					
0145	Other Intergovernmental Revenue Receivable					
0146	Due from Primary Government					
0147	Due from Component Unit					
0150	Other Receivables					
0170	Inventories					
0180	Prepaid Expenses (Expenditures)					
0190	Other Current Assets					
Total Assets			\$3,574,880	\$5,097,152		
0910	Deferred Outflows of Resources					
Total Assets And Deferred Outflows Of Resources			\$3,574,880	\$5,097,152		

LEA : 113362403 Elizabethtown Area SD

Printed 11/23/2021 11:43:04 AM

Amounts Expressed in Whole Dollars		<u>Total Governmental</u>
		<u>Funds</u>
Assets And Deferred Outflows Of Resources		
Assets		
0100 Cash and Cash Equivalents		19,567,933
0110 Investments		1,485,371
0120 Taxes Receivable		1,530,553
0130 Due From Other Funds		154,713
0141 Due From Other Governments		3,666,199
0142 State Revenue Receivable		
0143 Federal Revenue Receivable		
0145 Other Intergovernmental Revenue Receivable		
0146 Due from Primary Government		
0147 Due from Component Unit		
0150 Other Receivables		42,646
0170 Inventories		131,430
0180 Prepaid Expenses (Expenditures)		42,896
0190 Other Current Assets		
Total Assets		\$26,621,741
0910 Deferred Outflows of Resources		
Total Assets And Deferred Outflows Of Resources		\$26,621,741

Amounts Expressed in Whole Dollars		<u>General Fund</u> <u>(10)</u>	<u>Student Sponsored</u> <u>Activity Fund</u> <u>(21)</u>	<u>Public Purpose Trust</u> <u>(27)</u>	<u>Other Compt Approved</u> <u>(28)</u>	<u>Athletic / Activity</u> <u>(29)</u>
Liabilities And Deferred Inflows Of Resources And Fund Balances						
Liabilities						
0400	Due to Other Funds					
0411	Due to Other Governments	493,589				
0412	Due to Primary Government					
0413	Due to Component Unit					
0420	Accounts Payable	888,225				
0430	Contracts Payable					
0440	Current Portion of Long-Term Debt					
0450	Short-Term Payables					
0461	Accrued Salaries and Benefits	6,127,074				
0462	Payroll Deductions and Withholding	288,052				
0480	Unearned Revenues	94,872				
0490	Other Current Liabilities					
Total Liabilities		\$7,891,812				
0950	Deferred Inflows of Resources	459,167				
Fund Balances						
0810	Nonspendable Fund Balance	320,957				
0820	Restricted Fund Balance					
0830	Committed Fund Balance	400,000				
0840	Assigned Fund Balance	3,700,000				
0850	Unassigned Fund Balance	5,177,773				
Total Fund Balances		\$9,598,730				
Total Liabilities, Deferred Inflows Of Resources And Fund Balances		\$17,949,709				

LEA : 113362403 Elizabethtown Area SD

Printed 11/23/2021 11:43:04 AM

Amounts Expressed in Whole Dollars		<u>Capital Reserve (690.</u> <u>1850)</u> <u>(31)</u>	<u>Capital Reserve (1431)</u> <u>(32)</u>	<u>Other Capital Projects</u> <u>Fund</u> <u>(39)</u>	<u>Debt Service</u> <u>(40)</u>	<u>Permanent</u> <u>(90)</u>
Liabilities And Deferred Inflows Of Resources And Fund Balances						
Liabilities						
0400	Due to Other Funds			1,513		
0411	Due to Other Governments					
0412	Due to Primary Government					
0413	Due to Component Unit					
0420	Accounts Payable		36,104	9,590		
0430	Contracts Payable		6,153	106,364		
0440	Current Portion of Long-Term Debt					
0450	Short-Term Payables					
0461	Accrued Salaries and Benefits					
0462	Payroll Deductions and Withholding					
0480	Unearned Revenues					
0490	Other Current Liabilities					
Total Liabilities			\$42,257	\$117,467		
0950	Deferred Inflows of Resources					
Fund Balances						
0810	Nonspendable Fund Balance					
0820	Restricted Fund Balance		3,532,623	4,979,685		
0830	Committed Fund Balance					
0840	Assigned Fund Balance					
0850	Unassigned Fund Balance					
Total Fund Balances			\$3,532,623	\$4,979,685		
Total Liabilities, Deferred Inflows Of Resources And Fund Balances			\$3,574,880	\$5,097,152		

LEA : 113362403 Elizabethtown Area SD

Printed 11/23/2021 11:43:04 AM

Amounts Expressed in Whole Dollars		<u>Total Governmental</u> <u>Funds</u>
Liabilities And Deferred Inflows Of Resources And Fund Balances		
Liabilities		
0400 Due to Other Funds		1,513
0411 Due to Other Governments		493,589
0412 Due to Primary Government		
0413 Due to Component Unit		
0420 Accounts Payable		933,919
0430 Contracts Payable		112,517
0440 Current Portion of Long-Term Debt		
0450 Short-Term Payables		
0461 Accrued Salaries and Benefits		6,127,074
0462 Payroll Deductions and Withholding		288,052
0480 Unearned Revenues		94,872
0490 Other Current Liabilities		
Total Liabilities		\$8,051,536
0950 Deferred Inflows of Resources		459,167
Fund Balances		
0810 Nonspendable Fund Balance		320,957
0820 Restricted Fund Balance		8,512,308
0830 Committed Fund Balance		400,000
0840 Assigned Fund Balance		3,700,000
0850 Unassigned Fund Balance		5,177,773
Total Fund Balances		\$18,111,038
Total Liabilities, Deferred Inflows Of Resources And Fund Balances		\$26,621,741

Amounts Expressed in Whole Dollars	<u>General Fund</u> <u>(10)</u>	<u>Student Sponsored</u> <u>Activity Fund</u> <u>(21)</u>	<u>Public Purpose Trust</u> <u>(27)</u>	<u>Other Compt Approved</u> <u>(28)</u>	<u>Athletic / Activity</u> <u>(29)</u>
Revenues					
6000 Revenue from Local Sources	47,028,076				
7000 Revenue from State Sources	20,380,781				
8000 Revenue from Federal Sources	1,866,173				
Total Revenues	\$69,275,030				
Expenditures					
1000 Instruction	42,325,457				
2000 Support Services	18,733,688				
3000 Operation of Non-Instructional Services	1,067,054				
4000 Facilities Acquisition, Construction and Improvement Services					
5110 Debt Service					
5130 Refund of Prior Year Revenues / Receipts	5,651				
Total Expenditures	\$62,131,850				
Excess (Deficiency) Of Revenues Over Expenditures	\$7,143,180				
Other Financing Sources (Uses)					
9110 Face Value of Bonds Issued					
9120 Proceeds from Refunding of Bonds					
9130 Bond Premiums					
9200 Proceeds from Extended-Term Financing					
9300 Interfund Transfers - IN					
9400 Sale of or Compensation for Loss of Fixed Assets					
9710 Transfers from Component Units					
9720 Transfers from Primary Governments					
9910 Other Financing Sources Not Listed in the 9000 Series					
9990 Insurance Recoveries					
5120 Debt Service – Refunded Bonds					
5150 Bond Discounts					
5200 Interfund Transfers – Out	5,159,377				
5300 Transfers Out to Component Units/Primary Governments					
Total Other Financing Sources (Uses)	(\$5,159,377)				

Amounts Expressed in Whole Dollars		<u>Capital Reserve (690.1850)</u> <u>(31)</u>	<u>Capital Reserve (1431)</u> <u>(32)</u>	<u>Other Capital Projects</u> <u>Fund</u> <u>(39)</u>	<u>Debt Service</u> <u>(40)</u>	<u>Permanent</u> <u>(90)</u>
Revenues						
6000	Revenue from Local Sources		5,841	39,530		
7000	Revenue from State Sources					
8000	Revenue from Federal Sources					
Total Revenues			\$5,841	\$39,530		
Expenditures						
1000	Instruction					
2000	Support Services		649,980	4,072	322,028	
3000	Operation of Non-Instructional Services					
4000	Facilities Acquisition, Construction and Improvement Services		298,977	4,492,840		
5110	Debt Service				4,259,868	
5130	Refund of Prior Year Revenues / Receipts					
Total Expenditures			\$948,957	\$4,496,912	\$4,581,896	
Excess (Deficiency) Of Revenues Over Expenditures			(\$943,116)	(\$4,457,382)	(\$4,581,896)	
Other Financing Sources (Uses)						
9110	Face Value of Bonds Issued					
9120	Proceeds from Refunding of Bonds				19,990,000	
9130	Bond Premiums				837,520	
9200	Proceeds from Extended-Term Financing					
9300	Interfund Transfers - IN		1,100,000		4,059,377	
9400	Sale of or Compensation for Loss of Fixed Assets					
9710	Transfers from Component Units					
9720	Transfers from Primary Governments					
9910	Other Financing Sources Not Listed in the 9000 Series					
9990	Insurance Recoveries					
5120	Debt Service – Refunded Bonds				20,305,000	
5150	Bond Discounts					
5200	Interfund Transfers – Out					
5300	Transfers Out to Component Units/Primary Governments					
Total Other Financing Sources (Uses)			\$1,100,000		\$4,581,897	

Amounts Expressed in Whole Dollars		<u>Total Governmental Funds</u>
Revenues		
6000	Revenue from Local Sources	47,073,447
7000	Revenue from State Sources	20,380,781
8000	Revenue from Federal Sources	1,866,173
Total Revenues		\$69,320,401
Expenditures		
1000	Instruction	42,325,457
2000	Support Services	19,709,768
3000	Operation of Non-Instructional Services	1,067,054
4000	Facilities Acquisition, Construction and Improvement Services	4,791,817
5110	Debt Service	4,259,868
5130	Refund of Prior Year Revenues / Receipts	5,651
Total Expenditures		\$72,159,615
Excess (Deficiency) Of Revenues Over Expenditures		(\$2,839,214)
Other Financing Sources (Uses)		
9110	Face Value of Bonds Issued	
9120	Proceeds from Refunding of Bonds	19,990,000
9130	Bond Premiums	837,520
9200	Proceeds from Extended-Term Financing	
9300	Interfund Transfers - IN	5,159,377
9400	Sale of or Compensation for Loss of Fixed Assets	
9710	Transfers from Component Units	
9720	Transfers from Primary Governments	
9910	Other Financing Sources Not Listed in the 9000 Series	
9990	Insurance Recoveries	
5120	Debt Service – Refunded Bonds	20,305,000
5150	Bond Discounts	
5200	Interfund Transfers – Out	5,159,377
5300	Transfers Out to Component Units/Primary Governments	
Total Other Financing Sources (Uses)		\$522,520

Amounts Expressed in Whole Dollars		<u>General Fund</u> <u>(10)</u>	<u>Student Sponsored</u> <u>Activity Fund</u> <u>(21)</u>	<u>Public Purpose Trust</u> <u>(27)</u>	<u>Other Compt Approved</u> <u>(28)</u>	<u>Athletic / Activity</u> <u>(29)</u>
Special And Extraordinary Items						
9920	Special Items – Gains					
9930	Extraordinary Items – Gains					
5520	Special Items – Losses					
5530	Extraordinary Items – Losses					
Net Change In Fund Balances		\$1,983,803				
Fund Balance						
0001	Fund Balance - Beginning of Fiscal Year	7,614,926				
Fund Balance - End Of Year		\$9,598,729				

Amounts Expressed in Whole Dollars		<u>Capital Reserve (690.</u> <u>1850)</u> <u>(31)</u>	<u>Capital Reserve (1431)</u> <u>(32)</u>	<u>Other Capital Projects</u> <u>Fund</u> <u>(39)</u>	<u>Debt Service</u> <u>(40)</u>	<u>Permanent</u> <u>(90)</u>
Special And Extraordinary Items						
9920	Special Items – Gains					
9930	Extraordinary Items – Gains					
5520	Special Items – Losses					
5530	Extraordinary Items – Losses					
Net Change In Fund Balances			\$156,884	(\$4,457,382)	\$1	
Fund Balance						
0001	Fund Balance - Beginning of Fiscal Year		3,375,740	9,437,066		
Fund Balance - End Of Year			\$3,532,624	\$4,979,684	\$1	

Amounts Expressed in Whole Dollars		<u>Total Governmental</u> <u>Funds</u>
Special And Extraordinary Items		
9920	Special Items – Gains	
9930	Extraordinary Items – Gains	
5520	Special Items – Losses	
5530	Extraordinary Items – Losses	
Net Change In Fund Balances		(\$2,316,694)
Fund Balance		
0001	Fund Balance - Beginning of Fiscal Year	20,427,732
Fund Balance - End Of Year		\$18,111,038

Amounts Expressed in Whole Dollars		<u>Food Service</u> <u>(51)</u>	<u>Child Care</u> <u>Operations</u> <u>(52)</u>	<u>Other Enterprise</u> <u>(58)</u>	<u>TOTAL</u>	<u>Internal Service</u> <u>(60)</u>
Assets And Deferred Outflows Of Resources						
Current Assets						
0100	Cash and Cash Equivalents	22,561			22,561	1,667,910
0110	Investments					
0130	Due From Other Funds	39,373			39,373	
0141	Due From Other Governments					
0142	State Revenue Receivable					
0143	Federal Revenue Receivable					
0146	Due from Primary Government					
0147	Due from Component Unit					
0150	Other Receivables					149,691
0170	Inventories	139,670			139,670	208,999
0180	Prepaid Expenses (Expenditures)					
0190	Other Current Assets					
Total Current Assets		\$201,604			\$201,604	\$2,026,600
Noncurrent Assets						
0211	Land					
0212	Site Improvements (Net)					
0220	Buildings and Building Improvements (Net)					
0230	Machinery, Equipment and Furniture (Net)	1,931			1,931	
0250	Construction in Progress					
0260	Long Term Prepayments					
0290	Other Noncurrent Assets					
Total Noncurrent Assets		\$1,931			\$1,931	
0910	Deferred Outflows of Resources	189,000			189,000	
Total Assets And Deferred Outflows Of Resources		\$392,535			\$392,535	\$2,026,600

Amounts Expressed in Whole Dollars	<u>Food Service</u> <u>(51)</u>	<u>Child Care</u> <u>Operations</u> <u>(52)</u>	<u>Other Enterprise</u> <u>(58)</u>	<u>TOTAL</u>	<u>Internal Service</u> <u>(60)</u>
Liabilities And Deferred Inflows Of Resources And Net Position					
Current Liabilities					
0400 Due to Other Funds	146,631			146,631	
0411 Due to Other Governments					
0413 Due to Component Unit					
0420 Accounts Payable	33,521			33,521	655,867
0430 Contracts Payable					
0440 Current Portion of Long-Term Debt					
0450 Short-Term Payables					
0461 Accrued Salaries and Benefits	994			994	
0462 Payroll Deductions and Withholding					
0480 Unearned Revenues	89,998			89,998	
0490 Other Current Liabilities					
Total Current Liabilities	\$271,144			\$271,144	\$655,867
Noncurrent Liabilities					
0510 Bonds Payable					
0520 Extended-Term Financing Agreements Payable					
0530 Lease-Purchase Obligations					
0540 Accumulated Compensated Absences					
0550 Authority Lease Obligations					
0560 Other Post-Employment Benefits (OPEB)	92,000			92,000	
0570 Net Pension Liability	981,000			981,000	
0599 Other Noncurrent Liabilities					
Total Noncurrent Liabilities	\$1,073,000			\$1,073,000	
Total Liabilities	\$1,344,144			\$1,344,144	\$655,867
0950 Deferred Inflows of Resources	351,800			351,800	
Net Position					
0791 Net Investment in Capital Assets	1,931			1,931	
0008 Restricted Net Position (0792 – 0798)					
0799 Unrestricted Net Position	(1,305,340)			(1,305,340)	1,370,733
Total Net Position	(\$1,303,409)			(\$1,303,409)	\$1,370,733
Total Liabilities And Deferred Inflows Of Resources And Net Position	\$392,535			\$392,535	\$2,026,600

Amounts Expressed in Whole Dollars	<u>Food Service</u> <u>(51)</u>	<u>Child Care Operations</u> <u>(52)</u>	<u>Other Enterprise</u> <u>(58)</u>	<u>TOTAL</u>	<u>Internal Service</u> <u>(60)</u>
Operating Revenues					
6600 Food Service Revenue	151,954			151,954	
0071 Charges for Services					6,221,916
0072 Other Operating Revenue	45,885			45,885	
Total Operating Revenues	\$197,839			\$197,839	\$6,221,916
Operating Expenses					
100 Personnel Services – Salaries	193,871			193,871	
200 Personnel Services – Employee Benefits	58,932			58,932	6,297,688
300 Purchased Professional and Technical Services					
400 Purchased Property Services	9,806			9,806	
500 Other Purchased Services	670,944			670,944	
600 Supplies	130,025			130,025	
740 Depreciation	89			89	
810 Dues and Fees					517,021
880 Refunds of Prior Years' Receipts					
890 Miscellaneous Expenditures	802			802	
Total Operating Expenses	\$1,064,469			\$1,064,469	\$6,814,709
Operating Income (Loss)	(\$866,630)			(\$866,630)	(\$592,793)
Non Operating Revenues (Expenses)					
6500 Earnings on Investments	570			570	4,751
6920 Contributions and Donations from Private Sources					
6930 Gains or Losses on Sale of Fixed Assets					
6991 Refunds of a Prior Year Expenditure					
7000 Revenue from State Sources	70,170			70,170	
8000 Revenue from Federal Sources	1,089,381			1,089,381	
9990 Insurance Recoveries					
820 Claims and Judgments Against the LEA					
830 Interest					
TOTAL Non Operating Revenues (Expenses)	\$1,160,121			\$1,160,121	\$4,751
Income (Loss) Before Contributions And Transfers	\$293,491			\$293,491	(\$588,042)

Amounts Expressed in Whole Dollars	<u>Food Service</u> <u>(51)</u>	<u>Child Care Operations</u> <u>(52)</u>	<u>Other Enterprise</u> <u>(58)</u>	<u>TOTAL</u>	<u>Internal Service</u> <u>(60)</u>
Contributions, Transfers, and Special and Extraordinary Items					
5200 Interfund Transfers – Out					
5300 Transfers Out to Component Units/Primary Governments					
5520 Special Items – Losses					
5530 Extraordinary Items – Losses					
9300 Interfund Transfers - IN					
9500 Capital Contributions					
9700 Transfers IN From Component Units/Primary Governments					
9920 Special Items – Gains					
9930 Extraordinary Items – Gains					
Change In Net Position	\$293,491			\$293,491	(\$588,042)
0002 Net Position - Beginning of Fiscal Year	(1,596,900)			(1,596,900)	1,958,775
0003 Accounting Changes / Residual Equity Transfers					
Net Position - End Of Year	(\$1,303,409)			(\$1,303,409)	\$1,370,733

LEA : 113362403 Elizabethtown Area SD

Printed 11/23/2021 11:44:02 AM

Amounts Expressed in Whole Dollars		<u>Food Service</u> <u>(51)</u>	<u>Child Care Operations</u> <u>(52)</u>	<u>Other Enterprise</u> <u>(58)</u>	<u>TOTAL</u>	<u>Internal Service(60)</u>
Cash Flows From Operating Activities						
0011	Cash Receipts From Users	127,446			127,446	
0012	Cash Receipts From Assessments Made to Other Funds					6,276,275
0013	Cash Receipts From Earnings on Investments					
0014	Cash Receipts From Other Operating Revenue					
0015	Cash Payments To Employees For Services	495,385			495,385	
0016	Cash Payments For Insurance Claims					
0017	Cash Payments To Suppliers For Goods and Services	684,095			684,095	6,635,585
0018	Cash Payments For Other Operating Expenses					
Net Cash Provided By (Used For) Operating Activities		(\$1,052,034)			(\$1,052,034)	(\$359,310)
Cash Flows From Non-Capital Financing Activities						
0021	Receipts From Local Sources - 6000					
0022	Receipts From State Sources - 7000	68,768			68,768	
0023	Receipts From Federal Sources -8000	947,280			947,280	
0024	Notes and Loans Received (Repaid)					
0025	Interest Paid on Notes/Loans - 5100-830					
0026	Operating Transfers In (Out)/Residual Equity Trans					
0027	Operating Transfers In (Out) Primary Government / Comp Unit					
0028	Receipts From Refund of Prior Year Expenditures - 6991					
0029	Special and Extraordinary Gains (losses)					
0030	Receipts from Insurance Recoveries -9990					
Net Cash Prov By (Used for) Non-Capital Financing Activities		\$1,016,048			\$1,016,048	
Cash Flows From Capital and Related Financing Activities						
0031	Payments For Fac Acq, Const, and Imp - 4000					
0032	Gain / (Loss) on Sale of Fixed Assets - 6930					
0033	Proceeds From Extended Term Financing - 9200					
0034	Principal Paid on Financing Agreements					
0035	Interest Paid on Financing Agreements - 5100-830					
0036	(Inc) Dec in Contributed Capital					
Net Cash Prov By (Used for) Capital and Related Financing Activities						
Cash Flows From Investing Activities						
0041	Earnings on Investments - 6500	570			570	4,751
0042	Purchase of Inv Securities / Deposits to Inv Pools					397,938
0043	Receipts From Investment Pool Withdrawals					
0044	Proceeds from Sale and Maturity of Inv Securities					

LEA : 113362403 Elizabethtown Area SD

Printed 11/23/2021 11:44:02 AM

Page - 2 of 4

0045 Loans Received (Paid)

Net Cash Prov By (Used for) Investing Activities	\$570	\$570	\$402,689
--	-------	-------	-----------

LEA : 113362403 Elizabethtown Area SD

Printed 11/23/2021 11:44:02 AM

	<u>Food Service</u> <u>(51)</u>	<u>Child Care Operations</u> <u>(52)</u>	<u>Other Enterprise</u> <u>(58)</u>	<u>TOTAL</u>	<u>Internal Service</u> <u>(60)</u>
Net Increase (Decrease) in Cash Flows	(35,416)			(35,416)	43,379
0004 Cash and Cash Equivalents Beginning of Year	57,977			57,977	1,624,531
Cash and Cash Equivalents at Year End	\$22,561			\$22,561	\$1,667,910
Reconciliation of Operating Income (Loss) To Net Cash Provided by (Used For) Operating Activities					
0005 Operating Income (Loss) per REP	(866,630)			(866,630)	(592,793)
Adjustments					
0051 Depreciation and Net Amortization	89			89	
0052 Provision for Uncollectible Accounts					
0053 Other Adjustments	112,162			112,162	
Effect of Changes in Assets, Liabilities, Deferred Outflows and Deferred Inflows					
0054 (Inc) Dec In Accounts Receivable (0120-0150)					54,359
0055 Advances to Other Funds (0160)	(141,832)			(141,832)	
0056 (Inc) Dec in Inventories (0170)	(7,891)			(7,891)	
0057 (Inc) Dec in Prepaid Expenses (0180)					
0058 (Inc) Dec in Other Current or Noncurrent Assets					(76,509)
0064 Deferred Outflows (0910)					
0059 Inc (Dec) in Accounts Payable (0400-0450)	8,378			8,378	255,633
0060 Inc (Dec) in Accrued Salaries/Benefits (0461)	598			598	
0065 Inc (Dec) in Net Pension Liabilities (0570)	(132,400)			(132,400)	
0066 Inc (Dec) in Other Postemp Benefit Oblig (0560)					
0061 Inc (Dec) in Payroll Deductions/Withholding (0462)					
0062 Inc (Dec) in Unearned Revenue (0480)	(24,508)			(24,508)	
0063 Inc (Dec) in Other Current or Noncurrent Liabilities					
0067 Deferred Inflows (0950)					
Total Adjustments	(\$185,404)			(\$185,404)	\$233,483
Cash Provided By (Used for) Total	(\$1,052,034)			(\$1,052,034)	(\$359,310)

COMBINED STATEMENT OF CASH FLOWS
SCHEDULE OF NONCASH INVESTING, CAPITAL, AND FINANCING ACTIVITIES

Explanation of Transaction and Balance Sheet Effect	Amount
Total	

LEA : 113362403 Elizabethtown Area SD

Printed 11/23/2021 11:44:09 AM

Amounts Expressed in Whole Dollars		<u>Private Purpose Trust</u> <u>(71)</u>	<u>Investment Trust</u> <u>(72)</u>	<u>Pension Trust</u> <u>(73)</u>	<u>Student Activity Custodial</u> <u>(81)</u>
Assets And Deferred Outflows Of Resources					
Assets					
0100	Cash and Cash Equivalents				
0110	Investments				
0130	Due From Other Funds				
0140	Due from Other Governments, Primary Government and Component Units				
0150	Other Receivables				
0170	Inventories				
0180	Prepaid Expenses (Expenditures)				
0190	Other Current Assets				
0220	Buildings and Building Improvements (Net)				
0230	Machinery, Equipment and Furniture (Net)				
Total Assets					
0910	Deferred Outflows of Resources				
Total Assets And Deferred Outflows Of Resources					

LEA : 113362403 Elizabethtown Area SD

Printed 11/23/2021 11:44:09 AM

Amounts Expressed in Whole Dollars		<u>Other Custodial</u> <u>(89)</u>	<u>Fiduciary Component Units</u> <u>(98)</u>	<u>Total Fiduciary Funds</u>
Assets And Deferred Outflows Of Resources				
Assets				
0100	Cash and Cash Equivalents	552,155		552,155
0110	Investments			
0130	Due From Other Funds			
0140	Due from Other Governments, Primary Government and Component Units			
0150	Other Receivables	904		904
0170	Inventories			
0180	Prepaid Expenses (Expenditures)			
0190	Other Current Assets			
0220	Buildings and Building Improvements (Net)			
0230	Machinery, Equipment and Furniture (Net)			
Total Assets		\$553,059		\$553,059
0910	Deferred Outflows of Resources			
Total Assets And Deferred Outflows Of Resources		\$553,059		\$553,059

LEA : 113362403 Elizabethtown Area SD

Printed 11/23/2021 11:44:09 AM

Amounts Expressed in Whole Dollars		<u>Private Purpose Trust</u>	<u>Investment Trust</u>	<u>Pension Trust</u>	<u>Student Activity Custodial</u>
		<u>(71)</u>	<u>(72)</u>	<u>(73)</u>	<u>(81)</u>
Liabilities, Deferred Inflows Of Resources And Net Position					
Liabilities					
0400	Due to Other Funds				
0410	Due to Other Governments, Primary Government and Component Units				
0420	Accounts Payable				
0430	Contracts Payable				
0450	Short-Term Payables				
0460	Payroll Accruals and Withholdings				
0480	Unearned Revenues				
0490	Other Current Liabilities				
Total Liabilities					
0950	Deferred Inflows of Resources				
Net Position					
0791	Net Investment in Capital Assets				
0009	Restricted Net Position (0792 – 0798)				
0799	Unrestricted Net Position				
Total Net Position					
Total Liabilities, Deferred Inflows Of Resources And Net Position					

LEA : 113362403 Elizabethtown Area SD

Printed 11/23/2021 11:44:09 AM

Amounts Expressed in Whole Dollars	<u>Other Custodial</u> <u>(89)</u>	<u>Fiduciary Component Units</u> <u>(98)</u>	<u>Total Fiduciary Funds</u>
Liabilities, Deferred Inflows Of Resources And Net Position			
Liabilities			
0400 Due to Other Funds	416		416
0410 Due to Other Governments, Primary Government and Component Units			
0420 Accounts Payable	9,836		9,836
0430 Contracts Payable			
0450 Short-Term Payables			
0460 Payroll Accruals and Withholdings			
0480 Unearned Revenues			
0490 Other Current Liabilities			
Total Liabilities	\$10,252		\$10,252
0950 Deferred Inflows of Resources			
Net Position			
0791 Net Investment in Capital Assets			
0009 Restricted Net Position (0792 – 0798)	542,807		542,807
0799 Unrestricted Net Position			
Total Net Position	\$542,807		\$542,807
Total Liabilities, Deferred Inflows Of Resources And Net Position	\$553,059		\$553,059

LEA : 113362403 Elizabethtown Area SD

Printed 11/23/2021 11:44:15 AM

Amounts Expressed in Whole Dollars	<u>Private Purpose Trust</u> <u>(71)</u>	<u>Investment Trust</u> <u>(72)</u>	<u>Pension Trust</u> <u>(73)</u>	<u>Student Activity</u> <u>Custodial</u> <u>(81)</u>	<u>Other Custodial</u> <u>(89)</u>	<u>Fiduciary Component</u> <u>Units</u> <u>(98)</u>
Additions						
0091 Gifts and Contributions					8,200	
0095 Net Investment Earnings					1,223	
0092 Other Additions					154,623	
Deductions						
0093 Scholarships Awarded					15,127	
0094 Other Deductions					45,836	
Change In Net Position					\$103,083	
0006 Net Position – Beginning of Fiscal Year					439,724	
0007 Net Position Held in Trust for Pension Benefits						
Net Position - End of Fiscal Year					\$542,807	

Amounts Expressed in Whole Dollars		<u>Total Fiduciary</u>
		<u>Funds</u>
Additions		
0091	Gifts and Contributions	8,200
0095	Net Investment Earnings	1,223
0092	Other Additions	154,623
Deductions		
0093	Scholarships Awarded	15,127
0094	Other Deductions	45,836
Change In Net Position		\$103,083
0006	Net Position – Beginning of Fiscal Year	439,724
0007	Net Position Held in Trust for Pension Benefits	
Net Position - End of Fiscal Year		\$542,807

	Revenue Reported In Current Year	Current Year Tax Accrual	Prior Year Tax Accrual	Taxes Collected In Current Year
Revenue from Local Sources				
6111 Current Real Estate Taxes	37,211,857.56			37,211,857.56
6112 Interim Real Estate Taxes	227,065.42			227,065.42
6113 Public Utility Realty Taxes	39,071.66			39,071.66
6114 Payments in Lieu of Current Taxes - State / Local	978,384.00			978,384.00
6151 Current Act 511 Earned Income Taxes	4,341,409.95			4,341,409.95
6153 Current Act 511 Real Estate Transfer Taxes	1,313,788.57			1,313,788.57
6411 Delinquent Real Estate Taxes	684,190.44			684,190.44
6500 Earnings on Investments	118,040.19			
6700 Revenues from LEA Activities	45,674.44			
6831 Federal Revenue Received from Other Pennsylvania Public LEAs	113,742.06			
6832 Federal IDEA Revenue Received as Pass Through	732,274.00			
6839 Federal Revenue Received from Other Sources	375,859.00			
6890 Other Revenue from Intermediary Sources	82,685.19			
6910 Rentals	16,704.00			
6920 Contributions and Donations from Private Sources	13,491.52			
6944 Receipts from Other LEAs in Pennsylvania - Education	391,347.72			
6991 Refunds of a Prior Year Expenditure	42,948.00			
6999 Other Revenues Not Specified Above	299,542.77			
TOTAL Revenue from Local Sources	\$47,028,076.49			\$44,795,767.60

	Revenue Reported In Current Year			
<u>Revenue from State Sources</u>				
7111 Basic Education Funding-Formula	9,215,273.04			
7112 Basic Education Funding-Social Security	1,141,192.72			
7160 Tuition for Orphans Subsidy	137,082.16			
7220 Vocational Education	42,402.93			
7250 Migratory Children	120.00			
7271 Special Education funds for School-Aged Pupils	2,251,353.63			
7299 Program Revenues Not Listed Previously in the 7200 Series	94,220.00			
7311 Pupil Transportation Subsidy	942,196.18			
7312 Nonpublic and Charter School Pupil Transportation Subsidy	63,910.00			
7320 Rental and Sinking Fund Payments / Building Reimbursement Subsidy	263,622.77			
7330 Health Services (Medical, Dental, Nurse, Act 25)	81,312.29			
7340 State Property Tax Reduction Allocation	600,209.77			
7361 School Safety and Security Grants	22,506.40			
7505 Ready to Learn Block Grant	472,997.00			
7509 Supplemental Equipment Grants	9,014.18			
7810 State Share of Social Security and Medicare Taxes	(7,317.53)			
7820 State Share of Retirement Contributions	5,050,685.93			
TOTAL Revenue from State Sources	\$20,380,781.47			

	Revenue Reported In Current Year			
<u>Revenue from Federal Sources</u>				
8514 NCLB, Title I - Improving the Academic Achievement of the Disadvantaged	430,929.13			
8515 NCLB, Title II - Preparing, Training and Recruiting High Quality Teachers and Principals	91,502.45			
8517 NCLB, Title IV - 21St Century Schools	26,984.17			
8741 Elementary and Secondary School Emergency Relief Fund (ESSER)	385,305.00			
8742 Governor's Emergency Education Relief Fund (GEER)	6,667.22			
8743 ESSER II - Elementary and Secondary School Emergency Relief Fund	733,549.77			
8749 Other CARES Act Funding	173,756.00			
8820 Medical Assistance Reimbursement for Administrative Claiming (Quarterly) Program	17,479.31			
TOTAL Revenue from Federal Sources	\$1,866,173.05			
TOTAL FROM ALL SOURCES	\$69,275,031.01			\$44,795,767.60

LEA : 113362403 Elizabethtown Area SD

Printed 11/23/2021 11:44:25 AM

	<u>General Fund (10)</u>	<u>Student Sponsored Activity Fund (21)</u>	<u>Public Purpose Trust (27)</u>	<u>Other Compt Approved (28)</u>	<u>Athletic / Activity (29)</u>	<u>Capital Reserve (690, 1850) (31)</u>
6000 Revenue from Local Sources						
6111 Current Real Estate Taxes	37,211,857.56					
6112 Interim Real Estate Taxes	227,065.42					
6113 Public Utility Realty Taxes	39,071.66					
6114 Payments in Lieu of Current Taxes - State / Local	978,384.00					
6151 Current Act 511 Earned Income Taxes	4,341,409.95					
6153 Current Act 511 Real Estate Transfer Taxes	1,313,788.57					
6411 Delinquent Real Estate Taxes	684,190.44					
6500 Earnings on Investments	118,040.19					
6700 Revenues from LEA Activities	45,674.44					
6831 Federal Revenue Received from Other Pennsylvania Public LEAs	113,742.06					
6832 Federal IDEA Revenue Received as Pass Through	732,274.00					
6839 Federal Revenue Received from Other Sources	375,859.00					
6890 Other Revenue from Intermediary Sources	82,685.19					
6910 Rentals	16,704.00					
6920 Contributions and Donations from Private Sources	13,491.52					
6944 Receipts from Other LEAs in Pennsylvania - Education	391,347.72					
6991 Refunds of a Prior Year Expenditure	42,948.00					
6999 Other Revenues Not Specified Above	299,542.77					
6000 Total Revenue from Local Sources	\$47,028,076.49					
7000 Revenue from State Sources						
7111 Basic Education Funding-Formula	9,215,273.04					
7112 Basic Education Funding-Social Security	1,141,192.72					
7160 Tuition for Orphans Subsidy	137,082.16					
7220 Vocational Education	42,402.93					
7250 Migratory Children	120.00					
7271 Special Education funds for School-Aged Pupils	2,251,353.63					
7299 Program Revenues Not Listed Previously in the 7200 Series	94,220.00					
7311 Pupil Transportation Subsidy	942,196.18					
7312 Nonpublic and Charter School Pupil Transportation Subsidy	63,910.00					
7320 Rental and Sinking Fund Payments / Building Reimbursement Subsidy	263,622.77					
7330 Health Services (Medical, Dental, Nurse, Act 25)	81,312.29					
7340 State Property Tax Reduction Allocation	600,209.77					
7361 School Safety and Security Grants	22,506.40					
7505 Ready to Learn Block Grant	472,997.00					
7509 Supplemental Equipment Grants	9,014.18					

LEA : 113362403 Elizabethtown Area SD

Printed 11/23/2021 11:44:25 AM

	<u>Capital Reserve</u> <u>(1431) (32)</u>	<u>Other Capital</u> <u>Projects Fund (39)</u>	<u>Debt Service (40)</u>	<u>Permanent (90)</u>	<u>Total</u>
6000 Revenue from Local Sources					
6111 Current Real Estate Taxes					37,211,857.56
6112 Interim Real Estate Taxes					227,065.42
6113 Public Utility Realty Taxes					39,071.66
6114 Payments in Lieu of Current Taxes - State / Local					978,384.00
6151 Current Act 511 Earned Income Taxes					4,341,409.95
6153 Current Act 511 Real Estate Transfer Taxes					1,313,788.57
6411 Delinquent Real Estate Taxes					684,190.44
6500 Earnings on Investments	5,840.56	39,530.04			163,410.79
6700 Revenues from LEA Activities					45,674.44
6831 Federal Revenue Received from Other Pennsylvania Public LEAs					113,742.06
6832 Federal IDEA Revenue Received as Pass Through					732,274.00
6839 Federal Revenue Received from Other Sources					375,859.00
6890 Other Revenue from Intermediary Sources					82,685.19
6910 Rentals					16,704.00
6920 Contributions and Donations from Private Sources					13,491.52
6944 Receipts from Other LEAs in Pennsylvania - Education					391,347.72
6991 Refunds of a Prior Year Expenditure					42,948.00
6999 Other Revenues Not Specified Above					299,542.77
6000 Total Revenue from Local Sources	\$5,840.56	\$39,530.04			\$47,073,447.09
7000 Revenue from State Sources					
7111 Basic Education Funding-Formula					9,215,273.04
7112 Basic Education Funding-Social Security					1,141,192.72
7160 Tuition for Orphans Subsidy					137,082.16
7220 Vocational Education					42,402.93
7250 Migratory Children					120.00
7271 Special Education funds for School-Aged Pupils					2,251,353.63
7299 Program Revenues Not Listed Previously in the 7200 Series					94,220.00
7311 Pupil Transportation Subsidy					942,196.18
7312 Nonpublic and Charter School Pupil Transportation Subsidy					63,910.00
7320 Rental and Sinking Fund Payments / Building Reimbursement Subsidy					263,622.77
7330 Health Services (Medical, Dental, Nurse, Act 25)					81,312.29
7340 State Property Tax Reduction Allocation					600,209.77
7361 School Safety and Security Grants					22,506.40
7505 Ready to Learn Block Grant					472,997.00
7509 Supplemental Equipment Grants					9,014.18

LEA : 113362403 Elizabethtown Area SD

Printed 11/23/2021 11:44:25 AM

	<u>General Fund (10)</u>	<u>Student Sponsored Activity Fund (21)</u>	<u>Public Purpose Trust (27)</u>	<u>Other Compt Approved (28)</u>	<u>Athletic / Activity (29)</u>	<u>Capital Reserve (690, 1850) (31)</u>
7000 Revenue from State Sources						
7810 State Share of Social Security and Medicare Taxes	(7,317.53)					
7820 State Share of Retirement Contributions	5,050,685.93					
7000 Total Revenue from State Sources	\$20,380,781.47					
8000 Revenue from Federal Sources						
8514 NCLB, Title I - Improving the Academic Achievement of the Disadvantaged	430,929.13					
8515 NCLB, Title II - Preparing, Training and Recruiting High Quality Teachers and Principals	91,502.45					
8517 NCLB, Title IV - 21st Century Schools	26,984.17					
8741 Elementary and Secondary School Emergency Relief Fund (ESSER)	385,305.00					
8742 Governor's Emergency Education Relief Fund (GEER)	6,667.22					
8743 ESSER II - Elementary and Secondary School Emergency Relief Fund	733,549.77					
8749 Other CARES Act Funding	173,756.00					
8820 Medical Assistance Reimbursement for Administrative Claiming (Quarterly) Program	17,479.31					
8000 Total Revenue from Federal Sources	\$1,866,173.05					
9000 Other Financing Sources						
9120 Proceeds from Refunding of Bonds						
9130 Bond Premiums						
9310 General Fund Transfers						
9340 Debt Service Fund Transfers						
9000 Total Other Financing Sources						
Total From All Sources	\$69,275,031.01					

LEA : 113362403 Elizabethtown Area SD

Printed 11/23/2021 11:44:25 AM

	<u>Capital Reserve</u> <u>(1431) (32)</u>	<u>Other Capital</u> <u>Projects Fund (39)</u>	<u>Debt Service (40)</u>	<u>Permanent (90)</u>	<u>Total</u>
7000 Revenue from State Sources					
7810 State Share of Social Security and Medicare Taxes					(7,317.53)
7820 State Share of Retirement Contributions					5,050,685.93
7000 Total Revenue from State Sources					\$20,380,781.47
8000 Revenue from Federal Sources					
8514 NCLB, Title I - Improving the Academic Achievement of the Disadvantaged					430,929.13
8515 NCLB, Title II - Preparing, Training and Recruiting High Quality Teachers and Principals					91,502.45
8517 NCLB, Title IV - 21st Century Schools					26,984.17
8741 Elementary and Secondary School Emergency Relief Fund (ESSER)					385,305.00
8742 Governor's Emergency Education Relief Fund (GEER)					6,667.22
8743 ESSER II - Elementary and Secondary School Emergency Relief Fund					733,549.77
8749 Other CARES Act Funding					173,756.00
8820 Medical Assistance Reimbursement for Administrative Claiming (Quarterly) Program					17,479.31
8000 Total Revenue from Federal Sources					\$1,866,173.05
9000 Other Financing Sources					
9120 Proceeds from Refunding of Bonds			19,990,000.00		19,990,000.00
9130 Bond Premiums			837,519.70		837,519.70
9310 General Fund Transfers	1,100,000.00		4,059,377.08		5,159,377.08
9340 Debt Service Fund Transfers		0.18			0.18
9000 Total Other Financing Sources	\$1,100,000.00	\$0.18	\$24,886,896.78		\$25,986,896.96
Total From All Sources	\$1,105,840.56	\$39,530.22	\$24,886,896.78		\$95,307,298.57

LEA : 113362403 Elizabethtown Area SD

Printed 11/23/2021 11:44:31 AM

	<u>General Fund (10)</u>	<u>Student Sponsored Activity Fund (21)</u>	<u>Public Purpose Trust (27)</u>	<u>Other Compt Approved (28)</u>	<u>Athletic / Activity (29)</u>	<u>Capital Reserve (690. 1850) (31)</u>
Revenue from Local Sources	47,028,076.49					
Revenue from State Sources	20,380,781.47					
Revenue from Federal Sources	1,866,173.05					
Other Financing Sources						
Total From All Sources	\$69,275,031.01					

LEA : 113362403 Elizabethtown Area SD

Printed 11/23/2021 11:44:31 AM

	<u>Capital Reserve (1431)</u> <u>(32)</u>	<u>Other Capital Projects</u> <u>Fund (39)</u>	<u>Debt Service (40)</u>	<u>Permanent (90)</u>	<u>Total</u>
Revenue from Local Sources	5,840.56	39,530.04			47,073,447.09
Revenue from State Sources					20,380,781.47
Revenue from Federal Sources					1,866,173.05
Other Financing Sources	1,100,000.00	0.18	24,886,896.78		25,986,896.96
Total From All Sources	\$1,105,840.56	\$39,530.22	\$24,886,896.78		\$95,307,298.57

LEA : 113362403 Elizabethtown Area SD

Printed 11/23/2021 11:44:46 AM

General Fund (10)

1000 Instruction		Total
100 <u>Personnel Services – Salaries</u>		
100 Personnel Services – Salaries		20,636,422.07
Total Personnel Services – Salaries		\$20,636,422.07
200 <u>Personnel Services – Employee Benefits</u>		
210 Group Insurance – Contracted Provider		384,991.73
220 Social Security Contributions		1,536,218.36
230 PSERS Retirement Contributions		7,110,073.15
250 Unemployment Compensation		25,723.32
260 Workers' Compensation		160,934.63
270 Group Insurance – Self-Insurance		3,887,086.94
291 Other Retirement Plans		155,428.46
292 Health Savings Accounts		427,476.53
Total Personnel Services – Employee Benefits		\$13,687,933.12
300 <u>Purchased Professional and Technical Services</u>		
322 Professional Educational Services – Ius		1,438,087.91
323 Professional Educational Services – Other Educational Agencies		2,486.00
329 Professional Educational Services – Other		652,248.38
330 Other Professional Services		580,230.20
340 Technical Services		3,036.00
Total Purchased Professional and Technical Services		\$2,676,088.49
400 <u>Purchased Property Services</u>		
430 Repairs and Maintenance Services		8,054.36
440 Rentals		97,292.24
Total Purchased Property Services		\$105,346.60
500 <u>Other Purchased Services</u>		
510 Student Transportation Services		765.00
561 Tuition To Other School Districts Within the State		254,109.92
562 Tuition To Pennsylvania Charter Schools		2,279,383.82
563 Tuition To Nonpublic Schools		667,226.95
564 Tuition To Career and Technology Centers		1,021,807.00
566 Tuition To Institutions of Higher Education and Technical Institutes		2,250.59
567 Tuition To Approved Private Schools (APS) and PA Chartered Schools for the Deaf and Blind		29,300.86
568 Tuition To Private Residential Rehabilitative Institutions (PRRI) [In-State] and Detention Centers		15,748.95
569 Tuition – Other		59,760.00
580 Travel		1,836.57
594 IU Payment By Withholding for Institutionalized Children's Programs – Special Classes		14,778.62
Total Other Purchased Services		\$4,346,968.28
600 <u>Supplies</u>		
610 General Supplies		324,364.06
630 Food		606.46
640 Books and Periodicals		449.69
650 Supplies & Fees – Technology Related		526,026.60
Total Supplies		\$851,446.81

LEA : 113362403 Elizabethtown Area SD

Printed 11/23/2021 11:44:46 AM

General Fund (10)		
1000 Instruction		<u>Total</u>
800 <u>Other Objects</u>		
810 Dues and Fees		21,251.63
Total Other Objects		\$21,251.63
Total 1000 Instruction		\$42,325,457.00

LEA : 113362403 Elizabethtown Area SD

Printed 11/23/2021 11:44:46 AM

General Fund (10)

1100 Regular Programs – Elementary / Secondary

	Elementary	Secondary	Federal	Total
100 Personnel Services – Salaries				
100 Personnel Services – Salaries	8,020,206.58	7,544,382.03	911,563.30	16,476,151.91
Total Personnel Services – Salaries	\$8,020,206.58	\$7,544,382.03	\$911,563.30	\$16,476,151.91
200 Personnel Services – Employee Benefits				
210 Group Insurance – Contracted Provider	149,839.89	138,703.86	5,346.31	293,890.06
220 Social Security Contributions	597,132.97	581,912.44	48,077.66	1,227,123.07
230 PSERS Retirement Contributions	2,760,897.50	2,688,745.67	232,134.29	5,681,777.46
250 Unemployment Compensation	9,677.14	9,774.85	465.58	19,917.57
260 Workers' Compensation	70,466.84	59,696.45		130,163.29
270 Group Insurance – Self-Insurance	1,489,097.82	1,385,367.99	33,057.72	2,907,523.53
291 Other Retirement Plans	116,625.00	35,025.00		151,650.00
292 Health Savings Accounts	168,738.26	139,277.66	5,240.00	313,255.92
Total Personnel Services – Employee Benefits	\$5,362,475.42	\$5,038,503.92	\$324,321.56	\$10,725,300.90
300 Purchased Professional and Technical Services				
322 Professional Educational Services – Ius	85,991.50	348,344.64		434,336.14
323 Professional Educational Services – Other Educational Agencies		2,486.00		2,486.00
329 Professional Educational Services – Other	320,224.76	152,091.05	3,236.96	475,552.77
340 Technical Services	15.18	3,020.82		3,036.00
Total Purchased Professional and Technical Services	\$406,231.44	\$505,942.51	\$3,236.96	\$915,410.91
400 Purchased Property Services				
430 Repairs and Maintenance Services	3,429.86	4,624.50		8,054.36
440 Rentals	9.83	1,956.97		1,966.80
Total Purchased Property Services	\$3,439.69	\$6,581.47		\$10,021.16
500 Other Purchased Services				
510 Student Transportation Services	765.00			765.00
561 Tuition To Other School Districts Within the State		28,652.95		28,652.95
562 Tuition To Pennsylvania Charter Schools	7,811.22	1,554,431.97		1,562,243.19
568 Tuition To Private Residential Rehabilitative Institutions (PRRI) [In-State] and Detention Centers		1,857.19		1,857.19
580 Travel	53.20	245.28		298.48
Total Other Purchased Services	\$8,629.42	\$1,585,187.39		\$1,593,816.81
600 Supplies				
610 General Supplies	133,422.99	107,380.43	1,294.70	242,098.12
630 Food	3.03	603.43		606.46
650 Supplies & Fees – Technology Related	9,057.61	515,761.83	292.34	525,111.78
Total Supplies	\$142,483.63	\$623,745.69	\$1,587.04	\$767,816.36
800 Other Objects				
810 Dues and Fees	293.88	2,918.12		3,212.00
Total Other Objects	\$293.88	\$2,918.12		\$3,212.00
Total 1100 Regular Programs – Elementary / Secondary	\$13,943,760.06	\$15,307,261.13	\$1,240,708.86	\$30,491,730.05

LEA : 113362403 Elizabethtown Area SD

Printed 11/23/2021 11:44:46 AM

General Fund (10)

1110 Regular Programs

	Elementary	Secondary	Federal	Total
100 <u>Personnel Services – Salaries</u>				
100 Personnel Services – Salaries	8,020,206.58	7,544,382.03	547,622.56	16,112,211.17
Total Personnel Services – Salaries	\$8,020,206.58	\$7,544,382.03	\$547,622.56	\$16,112,211.17
200 <u>Personnel Services – Employee Benefits</u>				
210 Group Insurance – Contracted Provider	149,839.89	138,703.86		288,543.75
220 Social Security Contributions	597,132.97	581,912.44	20,978.90	1,200,024.31
230 PSERS Retirement Contributions	2,760,897.50	2,688,745.67	97,490.18	5,547,133.35
250 Unemployment Compensation	9,677.14	9,774.85		19,451.99
260 Workers' Compensation	70,466.84	59,696.45		130,163.29
270 Group Insurance – Self-Insurance	1,489,097.82	1,385,367.99		2,874,465.81
291 Other Retirement Plans	116,625.00	35,025.00		151,650.00
292 Health Savings Accounts	168,738.26	139,277.66		308,015.92
Total Personnel Services – Employee Benefits	\$5,362,475.42	\$5,038,503.92	\$118,469.08	\$10,519,448.42
300 <u>Purchased Professional and Technical Services</u>				
322 Professional Educational Services – Ius	85,991.50	348,344.64		434,336.14
323 Professional Educational Services – Other Educational Agencies		2,486.00		2,486.00
329 Professional Educational Services – Other	320,224.76	152,091.05	3,236.96	475,552.77
340 Technical Services	15.18	3,020.82		3,036.00
Total Purchased Professional and Technical Services	\$406,231.44	\$505,942.51	\$3,236.96	\$915,410.91
400 <u>Purchased Property Services</u>				
430 Repairs and Maintenance Services	3,429.86	4,624.50		8,054.36
440 Rentals	9.83	1,956.97		1,966.80
Total Purchased Property Services	\$3,439.69	\$6,581.47		\$10,021.16
500 <u>Other Purchased Services</u>				
510 Student Transportation Services	765.00			765.00
561 Tuition To Other School Districts Within the State		28,652.95		28,652.95
562 Tuition To Pennsylvania Charter Schools	7,811.22	1,554,431.97		1,562,243.19
568 Tuition To Private Residential Rehabilitative Institutions (PRRI) [In-State] and Detention Centers		1,857.19		1,857.19
580 Travel	53.20	245.28		298.48
Total Other Purchased Services	\$8,629.42	\$1,585,187.39		\$1,593,816.81
600 <u>Supplies</u>				
610 General Supplies	133,422.99	107,380.43	1,294.70	242,098.12
630 Food	3.03	603.43		606.46
650 Supplies & Fees – Technology Related	9,057.61	515,761.83	292.34	525,111.78
Total Supplies	\$142,483.63	\$623,745.69	\$1,587.04	\$767,816.36
800 <u>Other Objects</u>				
810 Dues and Fees	293.88	2,918.12		3,212.00
Total Other Objects	\$293.88	\$2,918.12		\$3,212.00
Total 1110 Regular Programs	\$13,943,760.06	\$15,307,261.13	\$670,915.64	\$29,921,936.83

LEA : 113362403 Elizabethtown Area SD

Printed 11/23/2021 11:44:46 AM

General Fund (10)

1190 Federally-Funded Regular Programs	<u>Elementary</u>	<u>Secondary</u>	<u>Federal</u>	<u>Total</u>
100 <u>Personnel Services – Salaries</u>				
100 Personnel Services – Salaries			363,940.74	363,940.74
Total Personnel Services – Salaries			\$363,940.74	\$363,940.74
200 <u>Personnel Services – Employee Benefits</u>				
210 Group Insurance – Contracted Provider			5,346.31	5,346.31
220 Social Security Contributions			27,098.76	27,098.76
230 PSERS Retirement Contributions			134,644.11	134,644.11
250 Unemployment Compensation			465.58	465.58
270 Group Insurance – Self-Insurance			33,057.72	33,057.72
292 Health Savings Accounts			5,240.00	5,240.00
Total Personnel Services – Employee Benefits			\$205,852.48	\$205,852.48
Total 1190 Federally-Funded Regular Programs			\$569,793.22	\$569,793.22

LEA : 113362403 Elizabethtown Area SD

Printed 11/23/2021 11:44:46 AM

General Fund (10)

1200 Special Programs – Elementary / Secondary

	Elementary	Secondary	Federal	Total
100 Personnel Services – Salaries				
100 Personnel Services – Salaries	1,574,560.19	1,711,229.30	246,033.00	3,531,822.49
Total Personnel Services – Salaries	\$1,574,560.19	\$1,711,229.30	\$246,033.00	\$3,531,822.49
200 Personnel Services – Employee Benefits				
210 Group Insurance – Contracted Provider	41,121.47	40,915.11	5,037.48	87,074.06
220 Social Security Contributions	117,551.11	128,214.44	18,085.71	263,851.26
230 PSERS Retirement Contributions	542,461.91	590,072.92	84,205.86	1,216,740.69
250 Unemployment Compensation	1,963.79	2,404.47	222.09	4,590.35
260 Workers' Compensation	13,703.48	14,609.71		28,313.19
270 Group Insurance – Self-Insurance	467,515.20	416,662.46	53,705.88	937,883.54
291 Other Retirement Plans	18.89	3,759.57		3,778.46
292 Health Savings Accounts	49,871.12	43,349.49	6,000.00	99,220.61
Total Personnel Services – Employee Benefits	\$1,234,206.97	\$1,239,988.17	\$167,257.02	\$2,641,452.16
300 Purchased Professional and Technical Services				
322 Professional Educational Services – Ius	94,610.54	892,794.45		987,404.99
329 Professional Educational Services – Other			164,721.00	164,721.00
330 Other Professional Services	22.07	569,215.38		569,237.45
Total Purchased Professional and Technical Services	\$94,632.61	\$1,462,009.83	\$164,721.00	\$1,721,363.44
400 Purchased Property Services				
440 Rentals	17.45	3,472.15		3,489.60
Total Purchased Property Services	\$17.45	\$3,472.15		\$3,489.60
500 Other Purchased Services				
561 Tuition To Other School Districts Within the State		224,890.36		224,890.36
562 Tuition To Pennsylvania Charter Schools	3,585.70	713,554.93		717,140.63
563 Tuition To Nonpublic Schools	220,096.85	308,333.60		528,430.45
567 Tuition To Approved Private Schools (APS) and PA Chartered Schools for the Deaf and Blind	8,296.60	21,004.26		29,300.86
568 Tuition To Private Residential Rehabilitative Institutions (PRRI) [In-State] and Detention Centers		13,891.76		13,891.76
580 Travel	7.70	1,530.39		1,538.09
594 IU Payment By Withholding for Institutionalized Children's Programs – Special Classes	14,778.62			14,778.62
Total Other Purchased Services	\$246,765.47	\$1,283,205.30		\$1,529,970.77
600 Supplies				
610 General Supplies	13,877.90	12,518.91	8,428.05	34,824.86
640 Books and Periodicals	2.25	447.44		449.69
650 Supplies & Fees – Technology Related	4.57	910.25		914.82
Total Supplies	\$13,884.72	\$13,876.60	\$8,428.05	\$36,189.37
800 Other Objects				
810 Dues and Fees	90.20	17,949.43		18,039.63
Total Other Objects	\$90.20	\$17,949.43		\$18,039.63
Total 1200 Special Programs – Elementary / Secondary	\$3,164,157.61	\$5,731,730.78	\$586,439.07	\$9,482,327.46

LEA : 113362403 Elizabethtown Area SD

Printed 11/23/2021 11:44:46 AM

General Fund (10)

1220 Sensory Support

	<u>Elementary</u>	<u>Secondary</u>	<u>Federal</u>	<u>Total</u>
100 <u>Personnel Services – Salaries</u>				
100 Personnel Services – Salaries	290,838.00	91,264.60		382,102.60
Total Personnel Services – Salaries	\$290,838.00	\$91,264.60		\$382,102.60
200 <u>Personnel Services – Employee Benefits</u>				
210 Group Insurance – Contracted Provider	4,212.52	1,580.08		5,792.60
220 Social Security Contributions	21,945.74	6,841.25		28,786.99
230 PSERS Retirement Contributions	100,368.21	31,495.42		131,863.63
250 Unemployment Compensation	380.91	125.89		506.80
260 Workers' Compensation	2,216.52	839.96		3,056.48
270 Group Insurance – Self-Insurance	42,766.11	15,324.06		58,090.17
292 Health Savings Accounts	4,596.12	250.00		4,846.12
Total Personnel Services – Employee Benefits	\$176,486.13	\$56,456.66		\$232,942.79
500 <u>Other Purchased Services</u>				
580 Travel	0.87	172.42		173.29
Total Other Purchased Services	\$0.87	\$172.42		\$173.29
600 <u>Supplies</u>				
610 General Supplies	23.21	4,618.76		4,641.97
Total Supplies	\$23.21	\$4,618.76		\$4,641.97
Total 1220 Sensory Support	\$467,348.21	\$152,512.44		\$619,860.65

LEA : 113362403 Elizabethtown Area SD

Printed 11/23/2021 11:44:46 AM

General Fund (10)

1230 Emotional Support

	<u>Elementary</u>	<u>Secondary</u>	<u>Federal</u>	<u>Total</u>
100 <u>Personnel Services – Salaries</u>				
100 Personnel Services – Salaries	455,105.36	376,539.92	70,045.00	901,690.28
Total Personnel Services – Salaries	\$455,105.36	\$376,539.92	\$70,045.00	\$901,690.28
200 <u>Personnel Services – Employee Benefits</u>				
210 Group Insurance – Contracted Provider	18,846.07	13,612.71	1,658.76	34,117.54
220 Social Security Contributions	33,869.24	28,374.36	5,258.55	67,502.15
230 PSERS Retirement Contributions	156,137.94	129,944.04	24,172.46	310,254.44
250 Unemployment Compensation	526.23	643.11		1,169.34
260 Workers' Compensation	3,541.57	4,000.53		7,542.10
270 Group Insurance – Self-Insurance	211,216.09	139,359.55	17,901.96	368,477.60
292 Health Savings Accounts	19,305.00	11,323.33	2,000.00	32,628.33
Total Personnel Services – Employee Benefits	\$443,442.14	\$327,257.63	\$50,991.73	\$821,691.50
600 <u>Supplies</u>				
610 General Supplies	4,859.03	3,386.54		8,245.57
Total Supplies	\$4,859.03	\$3,386.54		\$8,245.57
Total 1230 Emotional Support	\$903,406.53	\$707,184.09	\$121,036.73	\$1,731,627.35

LEA : 113362403 Elizabethtown Area SD

Printed 11/23/2021 11:44:46 AM

General Fund (10)				
1240 Academic Support	<u>Elementary</u>	<u>Secondary</u>	<u>Federal</u>	<u>Total</u>
100 <u>Personnel Services – Salaries</u>				
100 Personnel Services – Salaries	828,616.83	1,243,424.78	175,988.00	2,248,029.61
Total Personnel Services – Salaries	\$828,616.83	\$1,243,424.78	\$175,988.00	\$2,248,029.61
200 <u>Personnel Services – Employee Benefits</u>				
210 Group Insurance – Contracted Provider	18,062.88	25,722.32	3,378.72	47,163.92
220 Social Security Contributions	61,736.13	92,998.83	12,827.16	167,562.12
230 PSERS Retirement Contributions	285,955.76	428,633.46	60,033.40	774,622.62
250 Unemployment Compensation	1,056.65	1,635.47	222.09	2,914.21
260 Workers' Compensation	7,945.39	9,769.22		17,714.61
270 Group Insurance – Self-Insurance	213,533.00	261,978.85	35,803.92	511,315.77
291 Other Retirement Plans	18.89	3,759.57		3,778.46
292 Health Savings Accounts	25,970.00	31,776.16	4,000.00	61,746.16
Total Personnel Services – Employee Benefits	\$614,278.70	\$856,273.88	\$116,265.29	\$1,586,817.87
300 <u>Purchased Professional and Technical Services</u>				
330 Other Professional Services	22.07	4,392.38		4,414.45
Total Purchased Professional and Technical Services	\$22.07	\$4,392.38		\$4,414.45
500 <u>Other Purchased Services</u>				
561 Tuition To Other School Districts Within the State		224,890.36		224,890.36
563 Tuition To Nonpublic Schools	220,096.85	308,333.60		528,430.45
567 Tuition To Approved Private Schools (APS) and PA Chartered Schools for the Deaf and Blind	8,191.05			8,191.05
568 Tuition To Private Residential Rehabilitative Institutions (PRRI) [In-State] and Detention Centers		13,512.32		13,512.32
580 Travel	6.83	1,357.97		1,364.80
Total Other Purchased Services	\$228,294.73	\$548,094.25		\$776,388.98
600 <u>Supplies</u>				
610 General Supplies	8,995.66	4,513.61	8,428.05	21,937.32
640 Books and Periodicals	2.25	447.44		449.69
650 Supplies & Fees – Technology Related	4.57	910.25		914.82
Total Supplies	\$9,002.48	\$5,871.30	\$8,428.05	\$23,301.83
800 <u>Other Objects</u>				
810 Dues and Fees	16.58	3,298.42		3,315.00
Total Other Objects	\$16.58	\$3,298.42		\$3,315.00
Total 1240 Academic Support	\$1,680,231.39	\$2,661,355.01	\$300,681.34	\$4,642,267.74

LEA : 113362403 Elizabethtown Area SD

Printed 11/23/2021 11:44:46 AM

General Fund (10)

1241 Learning Support – Public	Elementary	Secondary	Federal	Total
100 Personnel Services – Salaries				
100 Personnel Services – Salaries	760,881.26	979,777.40	175,988.00	1,916,646.66
Total Personnel Services – Salaries	\$760,881.26	\$979,777.40	\$175,988.00	\$1,916,646.66
200 Personnel Services – Employee Benefits				
210 Group Insurance – Contracted Provider	17,754.92	21,749.19	3,378.72	42,882.83
220 Social Security Contributions	56,742.05	73,194.83	12,827.16	142,764.04
230 PSERS Retirement Contributions	262,580.09	337,830.34	60,033.40	660,443.83
250 Unemployment Compensation	973.30	1,299.26	222.09	2,494.65
260 Workers' Compensation	7,600.87	8,315.68		15,916.55
270 Group Insurance – Self-Insurance	213,533.00	208,134.71	35,803.92	457,471.63
291 Other Retirement Plans	18.89	3,759.57		3,778.46
292 Health Savings Accounts	25,970.00	24,980.00	4,000.00	54,950.00
Total Personnel Services – Employee Benefits	\$585,173.12	\$679,263.58	\$116,265.29	\$1,380,701.99
300 Purchased Professional and Technical Services				
330 Other Professional Services	22.07	4,392.38		4,414.45
Total Purchased Professional and Technical Services	\$22.07	\$4,392.38		\$4,414.45
500 Other Purchased Services				
561 Tuition To Other School Districts Within the State		224,890.36		224,890.36
563 Tuition To Nonpublic Schools	220,096.85	308,333.60		528,430.45
567 Tuition To Approved Private Schools (APS) and PA Chartered Schools for the Deaf and Blind	8,191.05			8,191.05
568 Tuition To Private Residential Rehabilitative Institutions (PRRI) [In-State] and Detention Centers		13,512.32		13,512.32
580 Travel	5.36	1,065.86		1,071.22
Total Other Purchased Services	\$228,293.26	\$547,802.14		\$776,095.40
600 Supplies				
610 General Supplies	7,522.91	4,513.61	8,428.05	20,464.57
640 Books and Periodicals	2.25	447.44		449.69
650 Supplies & Fees – Technology Related	4.57	910.25		914.82
Total Supplies	\$7,529.73	\$5,871.30	\$8,428.05	\$21,829.08
Total 1241 Learning Support – Public	\$1,581,899.44	\$2,217,106.80	\$300,681.34	\$4,099,687.58

LEA : 113362403 Elizabethtown Area SD

Printed 11/23/2021 11:44:46 AM

General Fund (10)

1243 Gifted Support

	<u>Elementary</u>	<u>Secondary</u>	<u>Federal</u>	<u>Total</u>
100 <u>Personnel Services – Salaries</u>				
100 Personnel Services – Salaries	67,735.57	263,647.38		331,382.95
Total Personnel Services – Salaries	\$67,735.57	\$263,647.38		\$331,382.95
200 <u>Personnel Services – Employee Benefits</u>				
210 Group Insurance – Contracted Provider	307.96	3,973.13		4,281.09
220 Social Security Contributions	4,994.08	19,804.00		24,798.08
230 PSERS Retirement Contributions	23,375.67	90,803.12		114,178.79
250 Unemployment Compensation	83.35	336.21		419.56
260 Workers' Compensation	344.52	1,453.54		1,798.06
270 Group Insurance – Self-Insurance		53,844.14		53,844.14
292 Health Savings Accounts		6,796.16		6,796.16
Total Personnel Services – Employee Benefits	\$29,105.58	\$177,010.30		\$206,115.88
500 <u>Other Purchased Services</u>				
580 Travel	1.47	292.11		293.58
Total Other Purchased Services	\$1.47	\$292.11		\$293.58
600 <u>Supplies</u>				
610 General Supplies	1,472.75			1,472.75
Total Supplies	\$1,472.75			\$1,472.75
800 <u>Other Objects</u>				
810 Dues and Fees	16.58	3,298.42		3,315.00
Total Other Objects	\$16.58	\$3,298.42		\$3,315.00
Total 1243 Gifted Support	\$98,331.95	\$444,248.21		\$542,580.16

LEA : 113362403 Elizabethtown Area SD

Printed 11/23/2021 11:44:46 AM

General Fund (10)				
1290 Special Programs - Other Support	<u>Elementary</u>	<u>Secondary</u>	<u>Federal</u>	<u>Total</u>
300 <u>Purchased Professional and Technical Services</u>				
322 Professional Educational Services – Ius	94,610.54	892,794.45		987,404.99
329 Professional Educational Services – Other			164,721.00	164,721.00
330 Other Professional Services		564,823.00		564,823.00
Total Purchased Professional and Technical Services	\$94,610.54	\$1,457,617.45	\$164,721.00	\$1,716,948.99
400 <u>Purchased Property Services</u>				
440 Rentals	17.45	3,472.15		3,489.60
Total Purchased Property Services	\$17.45	\$3,472.15		\$3,489.60
500 <u>Other Purchased Services</u>				
562 Tuition To Pennsylvania Charter Schools	3,585.70	713,554.93		717,140.63
567 Tuition To Approved Private Schools (APS) and PA Chartered Schools for the Deaf and Blind	105.55	21,004.26		21,109.81
568 Tuition To Private Residential Rehabilitative Institutions (PRRI) [In-State] and Detention Centers		379.44		379.44
594 IU Payment By Withholding for Institutionalized Children's Programs – Special Classes	14,778.62			14,778.62
Total Other Purchased Services	\$18,469.87	\$734,938.63		\$753,408.50
800 <u>Other Objects</u>				
810 Dues and Fees	73.62	14,651.01		14,724.63
Total Other Objects	\$73.62	\$14,651.01		\$14,724.63
Total 1290 Special Programs - Other Support	\$113,171.48	\$2,210,679.24	\$164,721.00	\$2,488,571.72

LEA : 113362403 Elizabethtown Area SD

Printed 11/23/2021 11:44:46 AM

General Fund (10)				
1300 Vocational Education				
	<u>Elementary</u>	<u>Secondary</u>	<u>Federal</u>	<u>Total</u>
100 <u>Personnel Services – Salaries</u>				
100 Personnel Services – Salaries		526,186.72		526,186.72
Total Personnel Services – Salaries		\$526,186.72		\$526,186.72
200 <u>Personnel Services – Employee Benefits</u>				
210 Group Insurance – Contracted Provider		2,791.45		2,791.45
220 Social Security Contributions		38,691.89		38,691.89
230 PSERS Retirement Contributions		181,586.99		181,586.99
250 Unemployment Compensation		1,104.94		1,104.94
260 Workers' Compensation		2,314.09		2,314.09
270 Group Insurance – Self-Insurance		28,488.50		28,488.50
292 Health Savings Accounts		13,000.00		13,000.00
Total Personnel Services – Employee Benefits		\$267,977.86		\$267,977.86
300 <u>Purchased Professional and Technical Services</u>				
329 Professional Educational Services – Other		3,620.00		3,620.00
Total Purchased Professional and Technical Services		\$3,620.00		\$3,620.00
400 <u>Purchased Property Services</u>				
440 Rentals		91,835.84		91,835.84
Total Purchased Property Services		\$91,835.84		\$91,835.84
500 <u>Other Purchased Services</u>				
564 Tuition To Career and Technology Centers		1,021,807.00		1,021,807.00
569 Tuition – Other		9,800.00		9,800.00
Total Other Purchased Services		\$1,031,607.00		\$1,031,607.00
600 <u>Supplies</u>				
610 General Supplies		31,094.47		31,094.47
Total Supplies		\$31,094.47		\$31,094.47
Total 1300 Vocational Education		\$1,952,321.89		\$1,952,321.89

LEA : 113362403 Elizabethtown Area SD

Printed 11/23/2021 11:44:46 AM

General Fund (10)

1400 Other Instructional Programs – Elementary / Secondary	<u>Elementary</u>	<u>Secondary</u>	<u>Federal</u>	<u>Total</u>
100 <u>Personnel Services – Salaries</u>				
100 Personnel Services – Salaries		102,260.95		102,260.95
Total Personnel Services – Salaries		\$102,260.95		\$102,260.95
200 <u>Personnel Services – Employee Benefits</u>				
210 Group Insurance – Contracted Provider		1,236.16		1,236.16
220 Social Security Contributions		6,552.14		6,552.14
230 PSERS Retirement Contributions		29,968.01		29,968.01
250 Unemployment Compensation		110.46		110.46
260 Workers' Compensation		144.06		144.06
270 Group Insurance – Self-Insurance		13,191.37		13,191.37
292 Health Savings Accounts		2,000.00		2,000.00
Total Personnel Services – Employee Benefits		\$53,202.20		\$53,202.20
300 <u>Purchased Professional and Technical Services</u>				
329 Professional Educational Services – Other	440.43	7,914.18		8,354.61
330 Other Professional Services		10,992.75		10,992.75
Total Purchased Professional and Technical Services	\$440.43	\$18,906.93		\$19,347.36
500 <u>Other Purchased Services</u>				
561 Tuition To Other School Districts Within the State		566.61		566.61
563 Tuition To Nonpublic Schools		138,796.50		138,796.50
569 Tuition – Other		49,960.00		49,960.00
Total Other Purchased Services		\$189,323.11		\$189,323.11
Total 1400 Other Instructional Programs – Elementary / Secondary	\$440.43	\$363,693.19		\$364,133.62

LEA : 113362403 Elizabethtown Area SD

Printed 11/23/2021 11:44:46 AM

General Fund (10)

1430 Homebound Instruction

300 Purchased Professional and Technical Services

	<u>Elementary</u>	<u>Secondary</u>	<u>Federal</u>	<u>Total</u>
329 Professional Educational Services – Other	440.43	7,914.18		8,354.61
Total Purchased Professional and Technical Services	\$440.43	\$7,914.18		\$8,354.61
Total 1430 Homebound Instruction	\$440.43	\$7,914.18		\$8,354.61

LEA : 113362403 Elizabethtown Area SD

Printed 11/23/2021 11:44:46 AM

General Fund (10)

1440 Alternative Regular Education Programs

	<u>Elementary</u>	<u>Secondary</u>	<u>Federal</u>	<u>Total</u>
100 <u>Personnel Services – Salaries</u>				
100 Personnel Services – Salaries		102,260.95		102,260.95
Total Personnel Services – Salaries		\$102,260.95		\$102,260.95
200 <u>Personnel Services – Employee Benefits</u>				
210 Group Insurance – Contracted Provider		1,236.16		1,236.16
220 Social Security Contributions		6,552.14		6,552.14
230 PSERS Retirement Contributions		29,968.01		29,968.01
250 Unemployment Compensation		110.46		110.46
260 Workers' Compensation		144.06		144.06
270 Group Insurance – Self-Insurance		13,191.37		13,191.37
292 Health Savings Accounts		2,000.00		2,000.00
Total Personnel Services – Employee Benefits		\$53,202.20		\$53,202.20
300 <u>Purchased Professional and Technical Services</u>				
330 Other Professional Services		10,992.75		10,992.75
Total Purchased Professional and Technical Services		\$10,992.75		\$10,992.75
500 <u>Other Purchased Services</u>				
561 Tuition To Other School Districts Within the State		566.61		566.61
563 Tuition To Nonpublic Schools		138,796.50		138,796.50
569 Tuition – Other		49,960.00		49,960.00
Total Other Purchased Services		\$189,323.11		\$189,323.11
Total 1440 Alternative Regular Education Programs		\$355,779.01		\$355,779.01

LEA : 113362403 Elizabethtown Area SD

Printed 11/23/2021 11:44:46 AM

General Fund (10)

1441 Adjudicated / Court-Placed Programs	<u>Elementary</u>	<u>Secondary</u>	<u>Federal</u>	<u>Total</u>
500 <u>Other Purchased Services</u>				
561 Tuition To Other School Districts Within the State		566.61		566.61
Total Other Purchased Services		\$566.61		\$566.61
Total 1441 Adjudicated / Court-Placed Programs		\$566.61		\$566.61

LEA : 113362403 Elizabethtown Area SD

Printed 11/23/2021 11:44:46 AM

General Fund (10)

1442 Alternative Education Programs	<u>Elementary</u>	<u>Secondary</u>	<u>Federal</u>	<u>Total</u>
100 <u>Personnel Services – Salaries</u>				
100 Personnel Services – Salaries		102,260.95		102,260.95
Total Personnel Services – Salaries		\$102,260.95		\$102,260.95
200 <u>Personnel Services – Employee Benefits</u>				
210 Group Insurance – Contracted Provider		1,236.16		1,236.16
220 Social Security Contributions		6,552.14		6,552.14
230 PSERS Retirement Contributions		29,968.01		29,968.01
250 Unemployment Compensation		110.46		110.46
260 Workers' Compensation		144.06		144.06
270 Group Insurance – Self-Insurance		13,191.37		13,191.37
292 Health Savings Accounts		2,000.00		2,000.00
Total Personnel Services – Employee Benefits		\$53,202.20		\$53,202.20
300 <u>Purchased Professional and Technical Services</u>				
330 Other Professional Services		10,992.75		10,992.75
Total Purchased Professional and Technical Services		\$10,992.75		\$10,992.75
500 <u>Other Purchased Services</u>				
563 Tuition To Nonpublic Schools		138,796.50		138,796.50
569 Tuition – Other		49,960.00		49,960.00
Total Other Purchased Services		\$188,756.50		\$188,756.50
Total 1442 Alternative Education Programs		\$355,212.40		\$355,212.40

LEA : 113362403 Elizabethtown Area SD

Printed 11/23/2021 11:44:46 AM

General Fund (10)

1500 Nonpublic School Programs

Elementary Secondary Federal Total

300 Purchased Professional and Technical Services

322 Professional Educational Services – lus 16,346.78 16,346.78

Total Purchased Professional and Technical Services \$16,346.78 \$16,346.78

600 Supplies

610 General Supplies 16,346.61 16,346.61

Total Supplies \$16,346.61 \$16,346.61

Total 1500 Nonpublic School Programs \$32,693.39 \$32,693.39

General Fund (10)

1700 Higher Education Programs for Secondary Students	<u>Elementary</u>	<u>Secondary</u>	<u>Federal</u>	<u>Total</u>
500 <u>Other Purchased Services</u>				
566 Tuition To Institutions of Higher Education and Technical Institutes				2,250.59
Total Other Purchased Services				\$2,250.59
Total 1700 Higher Education Programs for Secondary Students				\$2,250.59

LEA : 113362403 Elizabethtown Area SD

Printed 11/23/2021 11:45:10 AM

General Fund (10)

2000 Support Services

Total

100	<u>Personnel Services – Salaries</u>	
100	Personnel Services – Salaries	7,111,646.79
Total Personnel Services – Salaries		\$7,111,646.79
200	<u>Personnel Services – Employee Benefits</u>	
210	Group Insurance – Contracted Provider	158,712.67
220	Social Security Contributions	526,006.99
230	PSERS Retirement Contributions	2,437,089.48
240	Tuition Reimbursement	327,363.93
250	Unemployment Compensation	10,036.00
260	Workers' Compensation	61,840.72
270	Group Insurance – Self-Insurance	1,498,622.05
291	Other Retirement Plans	95,054.37
292	Health Savings Accounts	175,467.46
299	All Other Employee Benefits	9,849.60
Total Personnel Services – Employee Benefits		\$5,300,043.27
300	<u>Purchased Professional and Technical Services</u>	
310	Official / Administrative Services	124,988.72
330	Other Professional Services	123,980.12
340	Technical Services	10,520.51
350	Security / Safety Services	85,487.04
360	Employee Training and Development Services	155,718.11
Total Purchased Professional and Technical Services		\$500,694.50
400	<u>Purchased Property Services</u>	
410	Cleaning Services	521,094.75
420	Utility Services	37,889.54
430	Repairs and Maintenance Services	325,314.59
440	Rentals	142,116.58
460	Extermination Services	9,540.62
490	Other Purchased Property Services	4,570.80
Total Purchased Property Services		\$1,040,526.88
500	<u>Other Purchased Services</u>	
513	Contracted Carriers	2,022,829.67
516	Student Transportation Services From the IU	144,315.70
523	General Property and Liability Insurance	243,810.00
530	Communications	100,306.16
549	Other Advertising/Public Relations	11,757.29
550	Printing and Binding	20,368.80
580	Travel	3,531.55
595	IU Payments By Withholding	26,822.88
Total Other Purchased Services		\$2,573,742.05
600	<u>Supplies</u>	
610	General Supplies	1,258,831.78
620	Energy	568,356.70
630	Food	33,842.42

LEA : 113362403 Elizabethtown Area SD

Printed 11/23/2021 11:45:10 AM

General Fund (10)

2000 Support Services

Total

600 <u>Supplies</u>	
640 Books and Periodicals	28,151.71
650 Supplies & Fees – Technology Related	248,872.38
Total Supplies	\$2,138,054.99
800 <u>Other Objects</u>	
810 Dues and Fees	68,979.44
Total Other Objects	\$68,979.44
Total 2000 Support Services	\$18,733,687.92

LEA : 113362403 Elizabethtown Area SD

Printed 11/23/2021 11:45:10 AM

General Fund (10)

2100 Support Services – Students	Elementary	Secondary	Federal	Total
100 Personnel Services – Salaries				
100 Personnel Services – Salaries	385,026.08	921,769.83		1,525,993.42
Total Personnel Services – Salaries	\$385,026.08	\$921,769.83		\$1,525,993.42
200 Personnel Services – Employee Benefits				
210 Group Insurance – Contracted Provider	4,880.41	16,798.07		28,039.08
220 Social Security Contributions	28,959.04	68,204.72		113,649.15
230 PSERS Retirement Contributions	132,872.30	318,103.19		526,620.61
250 Unemployment Compensation	485.95	1,193.42		1,962.60
260 Workers' Compensation	3,086.78	7,275.51		12,271.63
270 Group Insurance – Self-Insurance	49,936.84	146,250.01		253,981.90
292 Health Savings Accounts	6,030.00	17,970.00		31,950.00
Total Personnel Services – Employee Benefits	\$226,251.32	\$575,794.92		\$968,474.97
300 Purchased Professional and Technical Services				
330 Other Professional Services	105.60	21,013.89	20,078.75	41,198.24
Total Purchased Professional and Technical Services	\$105.60	\$21,013.89	\$20,078.75	\$41,198.24
500 Other Purchased Services				
580 Travel	129.19	1,127.68		2,010.47
Total Other Purchased Services	\$129.19	\$1,127.68		\$2,010.47
600 Supplies				
610 General Supplies	1,155.91	16,533.28		18,668.47
640 Books and Periodicals	1.24	516.54		517.78
650 Supplies & Fees – Technology Related	67.30	13,390.80		13,458.10
Total Supplies	\$1,224.45	\$30,440.62		\$32,644.35
800 Other Objects				
810 Dues and Fees	6.94	(7,574.94)		(7,568.00)
Total Other Objects	\$6.94	(\$7,574.94)		(\$7,568.00)
Total 2100 Support Services – Students	\$612,743.58	\$1,542,572.00	\$20,078.75	\$2,562,753.45

LEA : 113362403 Elizabethtown Area SD

Printed 11/23/2021 11:45:10 AM

General Fund (10)

2110 Supervision of Student Services

	<u>Elementary</u>	<u>Secondary</u>	<u>Federal</u>	<u>Total</u>
600 <u>Supplies</u>				
640 Books and Periodicals	1.24	246.85		248.09
Total Supplies	\$1.24	\$246.85		\$248.09
800 <u>Other Objects</u>				
810 Dues and Fees	6.94	1,382.06		1,389.00
Total Other Objects	\$6.94	\$1,382.06		\$1,389.00
Total 2110 Supervision of Student Services	\$8.18	\$1,628.91		\$1,637.09

LEA : 113362403 Elizabethtown Area SD

Printed 11/23/2021 11:45:10 AM

General Fund (10)

2111 Supervision of Student Services – Head of Component

	<u>Elementary</u>	<u>Secondary</u>	<u>Federal</u>	<u>Total</u>
600 <u>Supplies</u>				
640 Books and Periodicals	1.24	246.85		248.09
Total Supplies	\$1.24	\$246.85		\$248.09
800 <u>Other Objects</u>				
810 Dues and Fees	6.94	1,382.06		1,389.00
Total Other Objects	\$6.94	\$1,382.06		\$1,389.00
Total 2111 Supervision of Student Services – Head of Component	\$8.18	\$1,628.91		\$1,637.09

LEA : 113362403 Elizabethtown Area SD

Printed 11/23/2021 11:45:10 AM

General Fund (10)

2120 Guidance Services	Elementary	Secondary	Federal	Total
100 Personnel Services – Salaries				
100 Personnel Services – Salaries	383,324.00	583,055.32		966,379.32
Total Personnel Services – Salaries	\$383,324.00	\$583,055.32		\$966,379.32
200 Personnel Services – Employee Benefits				
210 Group Insurance – Contracted Provider	4,856.52	12,043.20		16,899.72
220 Social Security Contributions	28,832.57	43,036.25		71,868.82
230 PSERS Retirement Contributions	132,284.91	201,212.50		333,497.41
250 Unemployment Compensation	483.75	755.12		1,238.87
260 Workers' Compensation	3,072.48	4,429.98		7,502.46
270 Group Insurance – Self-Insurance	49,688.40	96,810.05		146,498.45
292 Health Savings Accounts	6,000.00	12,000.00		18,000.00
Total Personnel Services – Employee Benefits	\$225,218.63	\$370,287.10		\$595,505.73
300 Purchased Professional and Technical Services				
330 Other Professional Services	84.72	16,859.77	17,578.75	34,523.24
Total Purchased Professional and Technical Services	\$84.72	\$16,859.77	\$17,578.75	\$34,523.24
500 Other Purchased Services				
580 Travel	123.52			123.52
Total Other Purchased Services	\$123.52			\$123.52
600 Supplies				
610 General Supplies	1,106.74	6,748.43		7,855.17
640 Books and Periodicals		269.69		269.69
650 Supplies & Fees – Technology Related	67.30	13,390.80		13,458.10
Total Supplies	\$1,174.04	\$20,408.92		\$21,582.96
800 Other Objects				
810 Dues and Fees		(8,957.00)		(8,957.00)
Total Other Objects		(\$8,957.00)		(\$8,957.00)
Total 2120 Guidance Services	\$609,924.91	\$981,654.11	\$17,578.75	\$1,609,157.77

LEA : 113362403 Elizabethtown Area SD

Printed 11/23/2021 11:45:10 AM

General Fund (10)

2140 Psychological Services	Elementary	Secondary	Federal	Total
100 Personnel Services – Salaries				
100 Personnel Services – Salaries	1,702.08	338,714.51		340,416.59
Total Personnel Services – Salaries	\$1,702.08	\$338,714.51		\$340,416.59
200 Personnel Services – Employee Benefits				
210 Group Insurance – Contracted Provider	23.89	4,754.87		4,778.76
220 Social Security Contributions	126.47	25,168.47		25,294.94
230 PSERS Retirement Contributions	587.39	116,890.69		117,478.08
250 Unemployment Compensation	2.20	438.30		440.50
260 Workers' Compensation	14.30	2,845.53		2,859.83
270 Group Insurance – Self-Insurance	248.44	49,439.96		49,688.40
292 Health Savings Accounts	30.00	5,970.00		6,000.00
Total Personnel Services – Employee Benefits	\$1,032.69	\$205,507.82		\$206,540.51
300 Purchased Professional and Technical Services				
330 Other Professional Services	20.88	4,154.12	2,500.00	6,675.00
Total Purchased Professional and Technical Services	\$20.88	\$4,154.12	\$2,500.00	\$6,675.00
500 Other Purchased Services				
580 Travel	5.67	1,127.68		1,133.35
Total Other Purchased Services	\$5.67	\$1,127.68		\$1,133.35
600 Supplies				
610 General Supplies	49.17	9,784.85		9,834.02
Total Supplies	\$49.17	\$9,784.85		\$9,834.02
Total 2140 Psychological Services	\$2,810.49	\$559,288.98	\$2,500.00	\$564,599.47

LEA : 113362403 Elizabethtown Area SD

Printed 11/23/2021 11:45:10 AM

General Fund (10)

2160 Social Work Services

Elementary Secondary Federal Total

100 <u>Personnel Services – Salaries</u>				
100 Personnel Services – Salaries				94,890.51
Total Personnel Services – Salaries				\$94,890.51
200 <u>Personnel Services – Employee Benefits</u>				
210 Group Insurance – Contracted Provider				3,177.60
220 Social Security Contributions				7,151.12
230 PSERS Retirement Contributions				32,746.74
250 Unemployment Compensation				120.31
260 Workers' Compensation				830.81
270 Group Insurance – Self-Insurance				35,517.60
292 Health Savings Accounts				4,950.00
Total Personnel Services – Employee Benefits				\$84,494.18
600 <u>Supplies</u>				
610 General Supplies				979.28
Total Supplies				\$979.28
Total 2160 Social Work Services				\$180,363.97

LEA : 113362403 Elizabethtown Area SD

Printed 11/23/2021 11:45:10 AM

General Fund (10)

2170 Student Accounting Services

Elementary Secondary Federal Total

100 <u>Personnel Services – Salaries</u>				
100 Personnel Services – Salaries				124,307.00
Total Personnel Services – Salaries				\$124,307.00
200 <u>Personnel Services – Employee Benefits</u>				
210 Group Insurance – Contracted Provider				3,183.00
220 Social Security Contributions				9,334.27
230 PSERS Retirement Contributions				42,898.38
250 Unemployment Compensation				162.92
260 Workers' Compensation				1,078.53
270 Group Insurance – Self-Insurance				22,277.45
292 Health Savings Accounts				3,000.00
Total Personnel Services – Employee Benefits				\$81,934.55
500 <u>Other Purchased Services</u>				
580 Travel				753.60
Total Other Purchased Services				\$753.60
Total 2170 Student Accounting Services				\$206,995.15

LEA : 113362403 Elizabethtown Area SD

Printed 11/23/2021 11:45:10 AM

General Fund (10)				
2200 Support Services – Instructional Staff	<u>Elementary</u>	<u>Secondary</u>	<u>Federal</u>	<u>Total</u>
100 <u>Personnel Services – Salaries</u>				
100 Personnel Services – Salaries	186,296.32	94,760.25		281,056.57
Total Personnel Services – Salaries	\$186,296.32	\$94,760.25		\$281,056.57
200 <u>Personnel Services – Employee Benefits</u>				
210 Group Insurance – Contracted Provider	3,229.96	1,668.96		4,898.92
220 Social Security Contributions	13,905.82	7,146.19		21,052.01
230 PSERS Retirement Contributions	64,290.81	32,711.35		97,002.16
240 Tuition Reimbursement	165,546.60	166,151.73		331,698.33
250 Unemployment Compensation	242.82	97.95		340.77
260 Workers' Compensation	1,745.48	756.88		2,502.36
270 Group Insurance – Self-Insurance	32,950.85	17,758.80		50,709.65
292 Health Savings Accounts	4,000.00	2,000.00		6,000.00
Total Personnel Services – Employee Benefits	\$285,912.34	\$228,291.86		\$514,204.20
300 <u>Purchased Professional and Technical Services</u>				
360 Employee Training and Development Services	669.53	133,234.94		133,904.47
Total Purchased Professional and Technical Services	\$669.53	\$133,234.94		\$133,904.47
500 <u>Other Purchased Services</u>				
580 Travel	(1.28)	(253.72)		(255.00)
Total Other Purchased Services	(\$1.28)	(\$253.72)		(\$255.00)
600 <u>Supplies</u>				
610 General Supplies	1,839.81	4,279.48		6,119.29
630 Food	1.60	319.07		320.67
640 Books and Periodicals	17,751.82	8,424.71		26,176.53
650 Supplies & Fees – Technology Related	93.70	18,941.46		19,035.16
Total Supplies	\$19,686.93	\$31,964.72		\$51,651.65
Total 2200 Support Services – Instructional Staff	\$492,563.84	\$487,998.05		\$980,561.89

LEA : 113362403 Elizabethtown Area SD

Printed 11/23/2021 11:45:10 AM

General Fund (10)

2250 School Library Services

	<u>Elementary</u>	<u>Secondary</u>	<u>Federal</u>	<u>Total</u>
100 <u>Personnel Services – Salaries</u>				
100 Personnel Services – Salaries	186,220.24	77,620.00		263,840.24
Total Personnel Services – Salaries	\$186,220.24	\$77,620.00		\$263,840.24
200 <u>Personnel Services – Employee Benefits</u>				
210 Group Insurance – Contracted Provider	3,229.96	1,668.96		4,898.92
220 Social Security Contributions	13,900.14	5,866.38		19,766.52
230 PSERS Retirement Contributions	64,264.55	26,786.47		91,051.02
250 Unemployment Compensation	242.82	97.95		340.77
260 Workers' Compensation	1,745.48	756.88		2,502.36
270 Group Insurance – Self-Insurance	32,950.85	17,758.80		50,709.65
292 Health Savings Accounts	4,000.00	2,000.00		6,000.00
Total Personnel Services – Employee Benefits	\$120,333.80	\$54,935.44		\$175,269.24
600 <u>Supplies</u>				
610 General Supplies	1,820.31	400.06		2,220.37
640 Books and Periodicals	17,751.82	8,195.48		25,947.30
650 Supplies & Fees – Technology Related	93.70	18,941.46		19,035.16
Total Supplies	\$19,665.83	\$27,537.00		\$47,202.83
Total 2250 School Library Services	\$326,219.87	\$160,092.44		\$486,312.31

LEA : 113362403 Elizabethtown Area SD

Printed 11/23/2021 11:45:10 AM

General Fund (10)

2260 Instruction and Curriculum Development Services

	<u>Elementary</u>	<u>Secondary</u>	<u>Federal</u>	<u>Total</u>
100 <u>Personnel Services – Salaries</u>				
100 Personnel Services – Salaries		2,000.00		2,000.00
Total Personnel Services – Salaries		\$2,000.00		\$2,000.00
200 <u>Personnel Services – Employee Benefits</u>				
220 Social Security Contributions		150.00		150.00
230 PSERS Retirement Contributions		700.00		700.00
Total Personnel Services – Employee Benefits		\$850.00		\$850.00
Total 2260 Instruction and Curriculum Development Services		\$2,850.00		\$2,850.00

LEA : 113362403 Elizabethtown Area SD

Printed 11/23/2021 11:45:10 AM

General Fund (10)

2270 Instructional Staff Professional Development Services	Elementary	Secondary	Federal	Total
100 <u>Personnel Services – Salaries</u>				
100 Personnel Services – Salaries	76.08	15,140.25		15,216.33
Total Personnel Services – Salaries	\$76.08	\$15,140.25		\$15,216.33
200 <u>Personnel Services – Employee Benefits</u>				
220 Social Security Contributions	5.68	1,129.81		1,135.49
230 PSERS Retirement Contributions	26.26	5,224.88		5,251.14
240 Tuition Reimbursement	165,546.60	166,151.73		331,698.33
Total Personnel Services – Employee Benefits	\$165,578.54	\$172,506.42		\$338,084.96
300 <u>Purchased Professional and Technical Services</u>				
360 Employee Training and Development Services	669.53	133,234.94		133,904.47
Total Purchased Professional and Technical Services	\$669.53	\$133,234.94		\$133,904.47
500 <u>Other Purchased Services</u>				
580 Travel	(1.28)	(253.72)		(255.00)
Total Other Purchased Services	(\$1.28)	(\$253.72)		(\$255.00)
600 <u>Supplies</u>				
610 General Supplies	19.50	3,879.42		3,898.92
630 Food	1.60	319.07		320.67
640 Books and Periodicals		229.23		229.23
Total Supplies	\$21.10	\$4,427.72		\$4,448.82
Total 2270 Instructional Staff Professional Development Services	\$166,343.97	\$325,055.61		\$491,399.58

LEA : 113362403 Elizabethtown Area SD

Printed 11/23/2021 11:45:10 AM

General Fund (10)

2300 Support Services – Administration	Elementary	Secondary	Federal	Total
100 Personnel Services – Salaries				
100 Personnel Services – Salaries	726,315.79	721,401.86	2,923.04	2,053,824.59
Total Personnel Services – Salaries	\$726,315.79	\$721,401.86	\$2,923.04	\$2,053,824.59
200 Personnel Services – Employee Benefits				
210 Group Insurance – Contracted Provider	20,447.52	13,651.60		43,473.58
220 Social Security Contributions	54,219.18	54,333.22	109.78	149,426.41
230 PSERS Retirement Contributions	250,636.04	245,854.87	504.37	704,338.82
250 Unemployment Compensation	733.73	1,354.40		2,984.69
260 Workers' Compensation	8,911.04	5,885.82		19,176.54
270 Group Insurance – Self-Insurance	196,827.01	123,856.40		402,864.01
291 Other Retirement Plans	27,761.12	4,263.85		64,236.89
292 Health Savings Accounts	23,461.40	15,000.00		46,461.40
Total Personnel Services – Employee Benefits	\$582,997.04	\$464,200.16	\$614.15	\$1,432,962.34
300 Purchased Professional and Technical Services				
310 Official / Administrative Services				124,988.72
330 Other Professional Services				65,509.00
Total Purchased Professional and Technical Services				\$190,497.72
500 Other Purchased Services				
530 Communications	2,369.66	3,636.97		84,204.18
550 Printing and Binding				10,651.32
580 Travel	43.68			(187.08)
Total Other Purchased Services	\$2,413.34	\$3,636.97		\$94,668.42
600 Supplies				
610 General Supplies	6,063.55	755.39		60,030.82
630 Food	3,076.27	2,366.60		27,457.55
640 Books and Periodicals	774.49	225.25		1,113.25
Total Supplies	\$9,914.31	\$3,347.24		\$88,601.62
800 Other Objects				
810 Dues and Fees	98.14	6,118.80		49,022.65
Total Other Objects	\$98.14	\$6,118.80		\$49,022.65
Total 2300 Support Services – Administration	\$1,321,738.62	\$1,198,705.03	\$3,537.19	\$3,909,577.34

LEA : 113362403 Elizabethtown Area SD

Printed 11/23/2021 11:45:10 AM

General Fund (10)

2310 Board Services

	<u>Elementary</u>	<u>Secondary</u>	<u>Federal</u>	<u>Total</u>
100 <u>Personnel Services – Salaries</u>				
100 Personnel Services – Salaries				2,399.80
Total Personnel Services – Salaries				\$2,399.80
200 <u>Personnel Services – Employee Benefits</u>				
220 Social Security Contributions				179.67
230 PSERS Retirement Contributions				828.10
Total Personnel Services – Employee Benefits				\$1,007.77
300 <u>Purchased Professional and Technical Services</u>				
330 Other Professional Services				25,250.00
Total Purchased Professional and Technical Services				\$25,250.00
500 <u>Other Purchased Services</u>				
580 Travel				(1,292.00)
Total Other Purchased Services				(\$1,292.00)
600 <u>Supplies</u>				
610 General Supplies				747.00
630 Food				300.02
Total Supplies				\$1,047.02
800 <u>Other Objects</u>				
810 Dues and Fees				26,257.46
Total Other Objects				\$26,257.46
Total 2310 Board Services				\$54,670.05

LEA : 113362403 Elizabethtown Area SD

Printed 11/23/2021 11:45:10 AM

General Fund (10)

2330 Tax Assessment and Collection Services	<u>Elementary</u>	<u>Secondary</u>	<u>Federal</u>	<u>Total</u>
300 <u>Purchased Professional and Technical Services</u>				
310 Official / Administrative Services				124,988.72
Total Purchased Professional and Technical Services				\$124,988.72
500 <u>Other Purchased Services</u>				
550 Printing and Binding				10,651.32
Total Other Purchased Services				\$10,651.32
Total 2330 Tax Assessment and Collection Services				\$135,640.04

LEA : 113362403 Elizabethtown Area SD

Printed 11/23/2021 11:45:10 AM

General Fund (10)

2350 Legal and Accounting Services	<u>Elementary</u>	<u>Secondary</u>	<u>Federal</u>	<u>Total</u>
300 <u>Purchased Professional and Technical Services</u>				
330 Other Professional Services				26,799.00
Total Purchased Professional and Technical Services				\$26,799.00
Total 2350 Legal and Accounting Services				\$26,799.00

LEA : 113362403 Elizabethtown Area SD

Printed 11/23/2021 11:45:10 AM

General Fund (10)

2360 Office of the Superintendent / Executive Director Services	<u>Elementary</u>	<u>Secondary</u>	<u>Federal</u>	<u>Total</u>
100 <u>Personnel Services – Salaries</u>				
100 Personnel Services – Salaries				600,784.10
Total Personnel Services – Salaries				\$600,784.10
200 <u>Personnel Services – Employee Benefits</u>				
210 Group Insurance – Contracted Provider				9,374.46
220 Social Security Contributions				40,584.56
230 PSERS Retirement Contributions				206,515.44
250 Unemployment Compensation				896.56
260 Workers' Compensation				4,379.68
270 Group Insurance – Self-Insurance				82,180.60
291 Other Retirement Plans				32,211.92
292 Health Savings Accounts				8,000.00
Total Personnel Services – Employee Benefits				\$384,143.22
300 <u>Purchased Professional and Technical Services</u>				
330 Other Professional Services				13,460.00
Total Purchased Professional and Technical Services				\$13,460.00
500 <u>Other Purchased Services</u>				
580 Travel				1,061.24
Total Other Purchased Services				\$1,061.24
600 <u>Supplies</u>				
610 General Supplies				429.08
630 Food				21,714.66
640 Books and Periodicals				113.51
Total Supplies				\$22,257.25
800 <u>Other Objects</u>				
810 Dues and Fees				16,548.25
Total Other Objects				\$16,548.25
Total 2360 Office of the Superintendent / Executive Director Services				\$1,038,254.06

LEA : 113362403 Elizabethtown Area SD

Printed 11/23/2021 11:45:10 AM

General Fund (10)

2380 Office of the Principal Services	Elementary	Secondary	Federal	Total
100 Personnel Services – Salaries				
100 Personnel Services – Salaries	726,315.79	721,401.86	2,923.04	1,450,640.69
Total Personnel Services – Salaries	\$726,315.79	\$721,401.86	\$2,923.04	\$1,450,640.69
200 Personnel Services – Employee Benefits				
210 Group Insurance – Contracted Provider	20,447.52	13,651.60		34,099.12
220 Social Security Contributions	54,219.18	54,333.22	109.78	108,662.18
230 PSERS Retirement Contributions	250,636.04	245,854.87	504.37	496,995.28
250 Unemployment Compensation	733.73	1,354.40		2,088.13
260 Workers' Compensation	8,911.04	5,885.82		14,796.86
270 Group Insurance – Self-Insurance	196,827.01	123,856.40		320,683.41
291 Other Retirement Plans	27,761.12	4,263.85		32,024.97
292 Health Savings Accounts	23,461.40	15,000.00		38,461.40
Total Personnel Services – Employee Benefits	\$582,997.04	\$464,200.16	\$614.15	\$1,047,811.35
500 Other Purchased Services				
530 Communications	2,369.66	3,636.97		6,006.63
580 Travel	43.68			43.68
Total Other Purchased Services	\$2,413.34	\$3,636.97		\$6,050.31
600 Supplies				
610 General Supplies	6,063.55	755.39		6,818.94
630 Food	3,076.27	2,366.60		5,442.87
640 Books and Periodicals	774.49	225.25		999.74
Total Supplies	\$9,914.31	\$3,347.24		\$13,261.55
800 Other Objects				
810 Dues and Fees	98.14	6,118.80		6,216.94
Total Other Objects	\$98.14	\$6,118.80		\$6,216.94
Total 2380 Office of the Principal Services	\$1,321,738.62	\$1,198,705.03	\$3,537.19	\$2,523,980.84

LEA : 113362403 Elizabethtown Area SD

Printed 11/23/2021 11:45:10 AM

General Fund (10)				
2390 Other Administration Services	<u>Elementary</u>	<u>Secondary</u>	<u>Federal</u>	<u>Total</u>
500 <u>Other Purchased Services</u>				
530 Communications				78,197.55
Total Other Purchased Services				\$78,197.55
600 <u>Supplies</u>				
610 General Supplies				52,035.80
Total Supplies				\$52,035.80
Total 2390 Other Administration Services				\$130,233.35

LEA : 113362403 Elizabethtown Area SD

Printed 11/23/2021 11:45:10 AM

General Fund (10)

2400 Support Services – Pupil Health	<u>Elementary</u>	<u>Secondary</u>	<u>Federal</u>	<u>Total</u>
100 <u>Personnel Services – Salaries</u>				
100 Personnel Services – Salaries				457,287.08
Total Personnel Services – Salaries				\$457,287.08
200 <u>Personnel Services – Employee Benefits</u>				
210 Group Insurance – Contracted Provider				13,789.70
220 Social Security Contributions				33,708.64
230 PSERS Retirement Contributions				145,876.83
250 Unemployment Compensation				594.88
260 Workers' Compensation				4,321.76
270 Group Insurance – Self-Insurance				126,342.45
292 Health Savings Accounts				15,499.94
Total Personnel Services – Employee Benefits				\$340,134.20
300 <u>Purchased Professional and Technical Services</u>				
330 Other Professional Services				586.32
Total Purchased Professional and Technical Services				\$586.32
600 <u>Supplies</u>				
610 General Supplies				13,911.24
Total Supplies				\$13,911.24
800 <u>Other Objects</u>				
810 Dues and Fees				260.00
Total Other Objects				\$260.00
Total 2400 Support Services – Pupil Health				\$812,178.84

LEA : 113362403 Elizabethtown Area SD

Printed 11/23/2021 11:45:10 AM

General Fund (10)

2420 Medical Services

	<u>Elementary</u>	<u>Secondary</u>	<u>Federal</u>	<u>Total</u>
300 <u>Purchased Professional and Technical Services</u>				
330 Other Professional Services				586.32
Total Purchased Professional and Technical Services				\$586.32
Total 2420 Medical Services				\$586.32

LEA : 113362403 Elizabethtown Area SD

Printed 11/23/2021 11:45:10 AM

General Fund (10)

2440 Nursing Services

	<u>Elementary</u>	<u>Secondary</u>	<u>Federal</u>	<u>Total</u>
100 <u>Personnel Services – Salaries</u>				
100 Personnel Services – Salaries				457,287.08
Total Personnel Services – Salaries				\$457,287.08
200 <u>Personnel Services – Employee Benefits</u>				
210 Group Insurance – Contracted Provider				13,789.70
220 Social Security Contributions				33,708.64
230 PSERS Retirement Contributions				145,876.83
250 Unemployment Compensation				594.88
260 Workers' Compensation				4,321.76
270 Group Insurance – Self-Insurance				126,342.45
292 Health Savings Accounts				15,499.94
Total Personnel Services – Employee Benefits				\$340,134.20
600 <u>Supplies</u>				
610 General Supplies				11,444.13
Total Supplies				\$11,444.13
800 <u>Other Objects</u>				
810 Dues and Fees				260.00
Total Other Objects				\$260.00
Total 2440 Nursing Services				\$809,125.41

LEA : 113362403 Elizabethtown Area SD

Printed 11/23/2021 11:45:10 AM

General Fund (10)				
2490 Other Health Services	<u>Elementary</u>	<u>Secondary</u>	<u>Federal</u>	<u>Total</u>
600 <u>Supplies</u>				
610 General Supplies				2,467.11
Total Supplies				\$2,467.11
Total 2490 Other Health Services				\$2,467.11

LEA : 113362403 Elizabethtown Area SD

Printed 11/23/2021 11:45:10 AM

General Fund (10)

2500 Support Services – Business	Elementary	Secondary	Federal	Total
100 <u>Personnel Services – Salaries</u>				
100 Personnel Services – Salaries				442,005.04
Total Personnel Services – Salaries				\$442,005.04
200 <u>Personnel Services – Employee Benefits</u>				
210 Group Insurance – Contracted Provider				11,285.48
220 Social Security Contributions				32,819.75
230 PSERS Retirement Contributions				152,536.17
250 Unemployment Compensation				785.60
260 Workers' Compensation				3,368.98
270 Group Insurance – Self-Insurance				118,942.95
291 Other Retirement Plans				6,464.77
292 Health Savings Accounts				16,425.00
Total Personnel Services – Employee Benefits				\$342,628.70
300 <u>Purchased Professional and Technical Services</u>				
330 Other Professional Services				6,141.81
340 Technical Services				133.33
Total Purchased Professional and Technical Services				\$6,275.14
400 <u>Purchased Property Services</u>				
430 Repairs and Maintenance Services				398.21
Total Purchased Property Services				\$398.21
500 <u>Other Purchased Services</u>				
530 Communications				13,745.09
549 Other Advertising/Public Relations				11,757.29
580 Travel				494.33
Total Other Purchased Services				\$25,996.71
600 <u>Supplies</u>				
610 General Supplies			602,247.81	859,886.26
630 Food				4,830.70
640 Books and Periodicals				172.20
650 Supplies & Fees – Technology Related				52,065.98
Total Supplies			\$602,247.81	\$916,955.14
800 <u>Other Objects</u>				
810 Dues and Fees				22,498.79
Total Other Objects				\$22,498.79
Total 2500 Support Services – Business			\$602,247.81	\$1,756,757.73

LEA : 113362403 Elizabethtown Area SD

Printed 11/23/2021 11:45:10 AM

General Fund (10)				
2510 Fiscal Services	<u>Elementary</u>	<u>Secondary</u>	<u>Federal</u>	<u>Total</u>
100 <u>Personnel Services – Salaries</u>				
100 Personnel Services – Salaries				386,556.26
Total Personnel Services – Salaries				\$386,556.26
200 <u>Personnel Services – Employee Benefits</u>				
210 Group Insurance – Contracted Provider				8,093.72
220 Social Security Contributions				28,758.41
230 PSERS Retirement Contributions				133,400.57
250 Unemployment Compensation				703.80
260 Workers' Compensation				2,896.41
270 Group Insurance – Self-Insurance				85,992.10
291 Other Retirement Plans				6,464.77
292 Health Savings Accounts				12,425.00
Total Personnel Services – Employee Benefits				\$278,734.78
300 <u>Purchased Professional and Technical Services</u>				
330 Other Professional Services				6,141.81
340 Technical Services				133.33
Total Purchased Professional and Technical Services				\$6,275.14
500 <u>Other Purchased Services</u>				
530 Communications				13,745.09
549 Other Advertising/Public Relations				11,757.29
580 Travel				494.33
Total Other Purchased Services				\$25,996.71
600 <u>Supplies</u>				
610 General Supplies			602,247.81	852,439.69
630 Food				4,830.70
640 Books and Periodicals				172.20
650 Supplies & Fees – Technology Related				52,065.98
Total Supplies			\$602,247.81	\$909,508.57
800 <u>Other Objects</u>				
810 Dues and Fees				22,498.79
Total Other Objects				\$22,498.79
Total 2510 Fiscal Services			\$602,247.81	\$1,629,570.25

LEA : 113362403 Elizabethtown Area SD

Printed 11/23/2021 11:45:10 AM

General Fund (10)				
2511 Supervision of Fiscal Services - Head of Component				
	<u>Elementary</u>	<u>Secondary</u>	<u>Federal</u>	<u>Total</u>
100 <u>Personnel Services – Salaries</u>				
100 Personnel Services – Salaries				343,276.07
Total Personnel Services – Salaries				\$343,276.07
200 <u>Personnel Services – Employee Benefits</u>				
210 Group Insurance – Contracted Provider				7,224.91
220 Social Security Contributions				25,618.73
230 PSERS Retirement Contributions				118,464.54
250 Unemployment Compensation				643.52
260 Workers' Compensation				2,513.02
270 Group Insurance – Self-Insurance				76,880.04
291 Other Retirement Plans				6,464.77
292 Health Savings Accounts				12,425.00
Total Personnel Services – Employee Benefits				\$250,234.53
300 <u>Purchased Professional and Technical Services</u>				
330 Other Professional Services				4,766.97
340 Technical Services				133.33
Total Purchased Professional and Technical Services				\$4,900.30
500 <u>Other Purchased Services</u>				
530 Communications				13,745.09
549 Other Advertising/Public Relations				11,757.29
580 Travel				494.33
Total Other Purchased Services				\$25,996.71
600 <u>Supplies</u>				
610 General Supplies			602,247.81	852,213.39
630 Food				4,830.70
640 Books and Periodicals				172.20
650 Supplies & Fees – Technology Related				52,065.98
Total Supplies			\$602,247.81	\$909,282.27
800 <u>Other Objects</u>				
810 Dues and Fees				7,015.87
Total Other Objects				\$7,015.87
Total 2511 Supervision of Fiscal Services - Head of Component			\$602,247.81	\$1,540,705.75

LEA : 113362403 Elizabethtown Area SD

Printed 11/23/2021 11:45:10 AM

General Fund (10)

2514 Payroll Services

	<u>Elementary</u>	<u>Secondary</u>	<u>Federal</u>	<u>Total</u>
100 <u>Personnel Services – Salaries</u>				
100 Personnel Services – Salaries				43,280.19
Total Personnel Services – Salaries				\$43,280.19
200 <u>Personnel Services – Employee Benefits</u>				
210 Group Insurance – Contracted Provider				868.81
220 Social Security Contributions				3,139.68
230 PSERS Retirement Contributions				14,936.03
250 Unemployment Compensation				60.28
260 Workers' Compensation				383.39
270 Group Insurance – Self-Insurance				9,112.06
Total Personnel Services – Employee Benefits				\$28,500.25
300 <u>Purchased Professional and Technical Services</u>				
330 Other Professional Services				1,374.84
Total Purchased Professional and Technical Services				\$1,374.84
600 <u>Supplies</u>				
610 General Supplies				226.30
Total Supplies				\$226.30
800 <u>Other Objects</u>				
810 Dues and Fees				11,210.42
Total Other Objects				\$11,210.42
Total 2514 Payroll Services				\$84,592.00

LEA : 113362403 Elizabethtown Area SD

Printed 11/23/2021 11:45:10 AM

General Fund (10)

2519 Other Fiscal Services	<u>Elementary</u>	<u>Secondary</u>	<u>Federal</u>	<u>Total</u>
800 <u>Other Objects</u>				
810 Dues and Fees				4,272.50
Total Other Objects				\$4,272.50
Total 2519 Other Fiscal Services				\$4,272.50

LEA : 113362403 Elizabethtown Area SD

Printed 11/23/2021 11:45:10 AM

General Fund (10)				
2530 Warehousing and Distributing Services	<u>Elementary</u>	<u>Secondary</u>	<u>Federal</u>	<u>Total</u>
100 <u>Personnel Services – Salaries</u>				
100 Personnel Services – Salaries				55,448.78
Total Personnel Services – Salaries				\$55,448.78
200 <u>Personnel Services – Employee Benefits</u>				
210 Group Insurance – Contracted Provider				3,191.76
220 Social Security Contributions				4,061.34
230 PSERS Retirement Contributions				19,135.60
250 Unemployment Compensation				81.80
260 Workers' Compensation				472.57
270 Group Insurance – Self-Insurance				32,950.85
292 Health Savings Accounts				4,000.00
Total Personnel Services – Employee Benefits				\$63,893.92
400 <u>Purchased Property Services</u>				
430 Repairs and Maintenance Services				398.21
Total Purchased Property Services				\$398.21
600 <u>Supplies</u>				
610 General Supplies				7,446.57
Total Supplies				\$7,446.57
Total 2530 Warehousing and Distributing Services				\$127,187.48

LEA : 113362403 Elizabethtown Area SD

Printed 11/23/2021 11:45:10 AM

General Fund (10)				
2600 Operation and Maintenance of Plant Services	<u>Elementary</u>	<u>Secondary</u>	<u>Federal</u>	<u>Total</u>
100 <u>Personnel Services – Salaries</u>				
100 Personnel Services – Salaries				1,460,863.84
Total Personnel Services – Salaries				\$1,460,863.84
200 <u>Personnel Services – Employee Benefits</u>				
210 Group Insurance – Contracted Provider				38,154.99
220 Social Security Contributions				109,586.13
230 PSERS Retirement Contributions				503,754.80
250 Unemployment Compensation				2,082.24
260 Workers' Compensation				13,173.36
270 Group Insurance – Self-Insurance				380,066.74
291 Other Retirement Plans				5,353.42
292 Health Savings Accounts				39,131.12
Total Personnel Services – Employee Benefits				\$1,091,302.80
300 <u>Purchased Professional and Technical Services</u>				
330 Other Professional Services				7,174.00
350 Security / Safety Services				85,487.04
Total Purchased Professional and Technical Services				\$92,661.04
400 <u>Purchased Property Services</u>				
410 Cleaning Services				519,834.75
420 Utility Services				37,889.54
430 Repairs and Maintenance Services				324,916.38
440 Rentals				17,760.96
460 Extermination Services				9,540.62
490 Other Purchased Property Services				4,570.80
Total Purchased Property Services				\$914,513.05
500 <u>Other Purchased Services</u>				
523 General Property and Liability Insurance				243,810.00
530 Communications				1,259.01
580 Travel				175.78
Total Other Purchased Services				\$245,244.79
600 <u>Supplies</u>				
610 General Supplies	1,378.90	284,130.02		285,508.92
620 Energy				568,356.70
630 Food				353.59
650 Supplies & Fees – Technology Related				57,919.51
Total Supplies				\$912,138.72
800 <u>Other Objects</u>				
810 Dues and Fees				387.00
Total Other Objects				\$387.00
Total 2600 Operation and Maintenance of Plant Services	\$1,378.90	\$284,130.02		\$4,717,111.24

LEA : 113362403 Elizabethtown Area SD

Printed 11/23/2021 11:45:10 AM

General Fund (10)

2610 Supervision of Operation and Maintenance of Plant Services	<u>Elementary</u>	<u>Secondary</u>	<u>Federal</u>	<u>Total</u>
100 <u>Personnel Services – Salaries</u>				
100 Personnel Services – Salaries				144,002.82
Total Personnel Services – Salaries				\$144,002.82
200 <u>Personnel Services – Employee Benefits</u>				
210 Group Insurance – Contracted Provider				2,323.92
220 Social Security Contributions				10,447.10
230 PSERS Retirement Contributions				49,695.39
250 Unemployment Compensation				211.05
260 Workers' Compensation				1,090.73
270 Group Insurance – Self-Insurance				22,277.45
291 Other Retirement Plans				5,353.42
292 Health Savings Accounts				3,000.00
Total Personnel Services – Employee Benefits				\$94,399.06
Total 2610 Supervision of Operation and Maintenance of Plant Services				\$238,401.88

LEA : 113362403 Elizabethtown Area SD

Printed 11/23/2021 11:45:10 AM

General Fund (10)

2611 Supervision of Operation and Maintenance of Plant Services – Head of Component	<u>Elementary</u>	<u>Secondary</u>	<u>Federal</u>	<u>Total</u>
100 <u>Personnel Services – Salaries</u>				
100 Personnel Services – Salaries				144,002.82
Total Personnel Services – Salaries				\$144,002.82
200 <u>Personnel Services – Employee Benefits</u>				
210 Group Insurance – Contracted Provider				2,323.92
220 Social Security Contributions				10,447.10
230 PSERS Retirement Contributions				49,695.39
250 Unemployment Compensation				211.05
260 Workers' Compensation				1,090.73
270 Group Insurance – Self-Insurance				22,277.45
291 Other Retirement Plans				5,353.42
292 Health Savings Accounts				3,000.00
Total Personnel Services – Employee Benefits				\$94,399.06
Total 2611 Supervision of Operation and Maintenance of Plant Services – Head of Component				\$238,401.88

LEA : 113362403 Elizabethtown Area SD

Printed 11/23/2021 11:45:10 AM

General Fund (10)				
2620 Operation of Buildings Services	<u>Elementary</u>	<u>Secondary</u>	<u>Federal</u>	<u>Total</u>
100 <u>Personnel Services – Salaries</u>				
100 Personnel Services – Salaries				1,051,294.63
Total Personnel Services – Salaries				\$1,051,294.63
200 <u>Personnel Services – Employee Benefits</u>				
210 Group Insurance – Contracted Provider				28,126.32
220 Social Security Contributions				79,290.03
230 PSERS Retirement Contributions				362,412.24
250 Unemployment Compensation				1,493.41
260 Workers' Compensation				11,107.75
270 Group Insurance – Self-Insurance				290,036.48
292 Health Savings Accounts				31,131.12
Total Personnel Services – Employee Benefits				\$803,597.35
400 <u>Purchased Property Services</u>				
420 Utility Services				37,889.54
440 Rentals				2,487.81
Total Purchased Property Services				\$40,377.35
500 <u>Other Purchased Services</u>				
523 General Property and Liability Insurance				243,810.00
530 Communications				1,259.01
580 Travel				175.78
Total Other Purchased Services				\$245,244.79
600 <u>Supplies</u>				
610 General Supplies	1,117.39	232,087.38		233,204.77
620 Energy				549,852.66
630 Food				353.59
650 Supplies & Fees – Technology Related				13,407.46
Total Supplies				\$796,818.48
800 <u>Other Objects</u>				
810 Dues and Fees				347.00
Total Other Objects				\$347.00
Total 2620 Operation of Buildings Services	\$1,117.39	\$232,087.38		\$2,937,679.60

LEA : 113362403 Elizabethtown Area SD

Printed 11/23/2021 11:45:10 AM

General Fund (10)

2630 Care and Upkeep of Grounds Services	<u>Elementary</u>	<u>Secondary</u>	<u>Federal</u>	<u>Total</u>
100 <u>Personnel Services – Salaries</u>				
100 Personnel Services – Salaries				156,275.68
Total Personnel Services – Salaries				\$156,275.68
200 <u>Personnel Services – Employee Benefits</u>				
210 Group Insurance – Contracted Provider				5,145.75
220 Social Security Contributions				11,909.03
230 PSERS Retirement Contributions				53,930.88
250 Unemployment Compensation				218.07
260 Workers' Compensation				631.88
270 Group Insurance – Self-Insurance				42,398.05
292 Health Savings Accounts				2,000.00
Total Personnel Services – Employee Benefits				\$116,233.66
400 <u>Purchased Property Services</u>				
410 Cleaning Services				33,671.52
Total Purchased Property Services				\$33,671.52
600 <u>Supplies</u>				
610 General Supplies	48.78	9,706.98		9,755.76
Total Supplies	\$48.78	\$9,706.98		\$9,755.76
800 <u>Other Objects</u>				
810 Dues and Fees				40.00
Total Other Objects				\$40.00
Total 2630 Care and Upkeep of Grounds Services	\$48.78	\$9,706.98		\$315,976.62

LEA : 113362403 Elizabethtown Area SD

Printed 11/23/2021 11:45:10 AM

General Fund (10)

2640 Care and Upkeep of Equipment Services	<u>Elementary</u>	<u>Secondary</u>	<u>Federal</u>	<u>Total</u>
400 <u>Purchased Property Services</u>				
430 Repairs and Maintenance Services				31,078.76
Total Purchased Property Services				\$31,078.76
600 <u>Supplies</u>				
610 General Supplies	82.34	16,386.60		16,468.94
620 Energy				258.99
Total Supplies	\$82.34	\$16,386.60		\$16,727.93
Total 2640 Care and Upkeep of Equipment Services	\$82.34	\$16,386.60		\$47,806.69

LEA : 113362403 Elizabethtown Area SD

Printed 11/23/2021 11:45:10 AM

General Fund (10)

2650 Vehicle Operation and Maintenance Services (Other Than Student Transportation Vehicles)	<u>Elementary</u>	<u>Secondary</u>	<u>Federal</u>	<u>Total</u>
400 <u>Purchased Property Services</u>				
430 Repairs and Maintenance Services				16,225.84
440 Rentals				1,222.90
Total Purchased Property Services				\$17,448.74
600 <u>Supplies</u>				
610 General Supplies	3.55	706.93		710.48
620 Energy				18,245.05
Total Supplies	\$3.55	\$706.93		\$18,955.53
Total 2650 Vehicle Operation and Maintenance Services (Other Than Student Transportation Vehicles)	\$3.55	\$706.93		\$36,404.27

LEA : 113362403 Elizabethtown Area SD

Printed 11/23/2021 11:45:10 AM

General Fund (10)

2660 Safety and Security Services	<u>Elementary</u>	<u>Secondary</u>	<u>Federal</u>	<u>Total</u>
100 <u>Personnel Services – Salaries</u>				
100 Personnel Services – Salaries				109,290.71
Total Personnel Services – Salaries				\$109,290.71
200 <u>Personnel Services – Employee Benefits</u>				
210 Group Insurance – Contracted Provider				2,559.00
220 Social Security Contributions				7,939.97
230 PSERS Retirement Contributions				37,716.29
250 Unemployment Compensation				159.71
260 Workers' Compensation				343.00
270 Group Insurance – Self-Insurance				25,354.76
292 Health Savings Accounts				3,000.00
Total Personnel Services – Employee Benefits				\$77,072.73
300 <u>Purchased Professional and Technical Services</u>				
330 Other Professional Services				3,875.00
350 Security / Safety Services				85,487.04
Total Purchased Professional and Technical Services				\$89,362.04
600 <u>Supplies</u>				
610 General Supplies	126.84	25,242.13		25,368.97
650 Supplies & Fees – Technology Related				44,512.05
Total Supplies	\$126.84	\$25,242.13		\$69,881.02
Total 2660 Safety and Security Services	\$126.84	\$25,242.13		\$345,606.50

LEA : 113362403 Elizabethtown Area SD

Printed 11/23/2021 11:45:10 AM

General Fund (10)

2690 Other Operation and Maintenance of Plant Services	<u>Elementary</u>	<u>Secondary</u>	<u>Federal</u>	<u>Total</u>
300 <u>Purchased Professional and Technical Services</u>				
330 Other Professional Services				3,299.00
Total Purchased Professional and Technical Services				\$3,299.00
400 <u>Purchased Property Services</u>				
410 Cleaning Services				486,163.23
430 Repairs and Maintenance Services				277,611.78
440 Rentals				14,050.25
460 Extermination Services				9,540.62
490 Other Purchased Property Services				4,570.80
Total Purchased Property Services				\$791,936.68
Total 2690 Other Operation and Maintenance of Plant Services				\$795,235.68

LEA : 113362403 Elizabethtown Area SD

Printed 11/23/2021 11:45:10 AM

General Fund (10)				
2700 Student Transportation Services	<u>Elementary</u>	<u>Secondary</u>	<u>Federal</u>	<u>Total</u>
100 <u>Personnel Services – Salaries</u>				
100 Personnel Services – Salaries				79,005.55
Total Personnel Services – Salaries				\$79,005.55
200 <u>Personnel Services – Employee Benefits</u>				
210 Group Insurance – Contracted Provider				1,780.20
220 Social Security Contributions				5,672.02
230 PSERS Retirement Contributions				27,264.86
250 Unemployment Compensation				118.07
260 Workers' Compensation				619.68
270 Group Insurance – Self-Insurance				17,758.80
291 Other Retirement Plans				2,730.00
292 Health Savings Accounts				2,000.00
Total Personnel Services – Employee Benefits				\$57,943.63
500 <u>Other Purchased Services</u>				
513 Contracted Carriers			500.00	2,022,829.67
516 Student Transportation Services From the IU				144,315.70
Total Other Purchased Services			\$500.00	\$2,167,145.37
600 <u>Supplies</u>				
650 Supplies & Fees – Technology Related				27,650.00
Total Supplies				\$27,650.00
800 <u>Other Objects</u>				
810 Dues and Fees				207.00
Total Other Objects				\$207.00
Total 2700 Student Transportation Services			\$500.00	\$2,331,951.55

LEA : 113362403 Elizabethtown Area SD

Printed 11/23/2021 11:45:10 AM

General Fund (10)

2710 Supervision of Student Transportation Services	<u>Elementary</u>	<u>Secondary</u>	<u>Federal</u>	<u>Total</u>
100 <u>Personnel Services – Salaries</u>				
100 Personnel Services – Salaries				76,912.91
Total Personnel Services – Salaries				\$76,912.91
200 <u>Personnel Services – Employee Benefits</u>				
210 Group Insurance – Contracted Provider				1,780.20
220 Social Security Contributions				5,511.87
230 PSERS Retirement Contributions				26,542.72
250 Unemployment Compensation				118.07
260 Workers' Compensation				619.68
270 Group Insurance – Self-Insurance				17,758.80
291 Other Retirement Plans				2,730.00
292 Health Savings Accounts				2,000.00
Total Personnel Services – Employee Benefits				\$57,061.34
600 <u>Supplies</u>				
650 Supplies & Fees – Technology Related				27,650.00
Total Supplies				\$27,650.00
800 <u>Other Objects</u>				
810 Dues and Fees				207.00
Total Other Objects				\$207.00
Total 2710 Supervision of Student Transportation Services				\$161,831.25

LEA : 113362403 Elizabethtown Area SD

Printed 11/23/2021 11:45:10 AM

General Fund (10)

2711 Supervision of Student Transportation Services – Head of Component	<u>Elementary</u>	<u>Secondary</u>	<u>Federal</u>	<u>Total</u>
100 <u>Personnel Services – Salaries</u>				
100 Personnel Services – Salaries				76,912.91
Total Personnel Services – Salaries				\$76,912.91
200 <u>Personnel Services – Employee Benefits</u>				
210 Group Insurance – Contracted Provider				1,780.20
220 Social Security Contributions				5,511.87
230 PSERS Retirement Contributions				26,542.72
250 Unemployment Compensation				118.07
260 Workers' Compensation				619.68
270 Group Insurance – Self-Insurance				17,758.80
291 Other Retirement Plans				2,730.00
292 Health Savings Accounts				2,000.00
Total Personnel Services – Employee Benefits				\$57,061.34
600 <u>Supplies</u>				
650 Supplies & Fees – Technology Related				27,650.00
Total Supplies				\$27,650.00
800 <u>Other Objects</u>				
810 Dues and Fees				207.00
Total Other Objects				\$207.00
Total 2711 Supervision of Student Transportation Services – Head of Component				\$161,831.25

LEA : 113362403 Elizabethtown Area SD

Printed 11/23/2021 11:45:10 AM

General Fund (10)

2720 Vehicle Operation Services	<u>Elementary</u>	<u>Secondary</u>	<u>Federal</u>	<u>Total</u>
500 <u>Other Purchased Services</u>				
513 Contracted Carriers			500.00	1,817,080.03
Total Other Purchased Services			\$500.00	\$1,817,080.03
Total 2720 Vehicle Operation Services			\$500.00	\$1,817,080.03

LEA : 113362403 Elizabethtown Area SD

Printed 11/23/2021 11:45:10 AM

General Fund (10)

2730 Monitoring Services

Elementary Secondary Federal Total

100 <u>Personnel Services – Salaries</u>				
100 Personnel Services – Salaries				2,092.64
Total Personnel Services – Salaries				\$2,092.64
200 <u>Personnel Services – Employee Benefits</u>				
220 Social Security Contributions				160.15
230 PSERS Retirement Contributions				722.14
Total Personnel Services – Employee Benefits				\$882.29
Total 2730 Monitoring Services				\$2,974.93

LEA : 113362403 Elizabethtown Area SD

Printed 11/23/2021 11:45:10 AM

General Fund (10)				
2750 Nonpublic Transportation	<u>Elementary</u>	<u>Secondary</u>	<u>Federal</u>	<u>Total</u>
500 <u>Other Purchased Services</u>				
513 Contracted Carriers				205,749.64
Total Other Purchased Services				\$205,749.64
Total 2750 Nonpublic Transportation				\$205,749.64

LEA : 113362403 Elizabethtown Area SD

Printed 11/23/2021 11:45:10 AM

General Fund (10)

2790 Other Student Transportation Services	<u>Elementary</u>	<u>Secondary</u>	<u>Federal</u>	<u>Total</u>
500 <u>Other Purchased Services</u>				
516 Student Transportation Services From the IU				144,315.70
Total Other Purchased Services				\$144,315.70
Total 2790 Other Student Transportation Services				\$144,315.70

LEA : 113362403 Elizabethtown Area SD

Printed 11/23/2021 11:45:10 AM

General Fund (10)

2800 Support Services – Central

	<u>Elementary</u>	<u>Secondary</u>	<u>Federal</u>	<u>Total</u>
100 <u>Personnel Services – Salaries</u>				
100 Personnel Services – Salaries				811,610.70
Total Personnel Services – Salaries				\$811,610.70
200 <u>Personnel Services – Employee Benefits</u>				
210 Group Insurance – Contracted Provider				17,290.72
220 Social Security Contributions				60,092.88
230 PSERS Retirement Contributions				279,695.23
240 Tuition Reimbursement				(4,334.40)
250 Unemployment Compensation				1,167.15
260 Workers' Compensation				6,406.41
270 Group Insurance – Self-Insurance				147,955.55
291 Other Retirement Plans				16,269.29
292 Health Savings Accounts				18,000.00
299 All Other Employee Benefits				9,849.60
Total Personnel Services – Employee Benefits				\$552,392.43
300 <u>Purchased Professional and Technical Services</u>				
330 Other Professional Services				3,370.75
340 Technical Services				10,387.18
360 Employee Training and Development Services			9,984.64	21,813.64
Total Purchased Professional and Technical Services			\$9,984.64	\$35,571.57
400 <u>Purchased Property Services</u>				
410 Cleaning Services				1,260.00
440 Rentals				124,355.62
Total Purchased Property Services				\$125,615.62
500 <u>Other Purchased Services</u>				
530 Communications				1,097.88
550 Printing and Binding				9,717.48
580 Travel				1,293.05
Total Other Purchased Services				\$12,108.41
600 <u>Supplies</u>				
610 General Supplies				14,706.78
630 Food				879.91
640 Books and Periodicals				171.95
650 Supplies & Fees – Technology Related				78,743.63
Total Supplies				\$94,502.27
800 <u>Other Objects</u>				
810 Dues and Fees				4,172.00
Total Other Objects				\$4,172.00
Total 2800 Support Services – Central			\$9,984.64	\$1,635,973.00

LEA : 113362403 Elizabethtown Area SD

Printed 11/23/2021 11:45:10 AM

General Fund (10)				
2810 Planning, Research, Development and Evaluation Services	<u>Elementary</u>	<u>Secondary</u>	<u>Federal</u>	<u>Total</u>
100 <u>Personnel Services – Salaries</u>				
100 Personnel Services – Salaries				552,093.74
Total Personnel Services – Salaries				\$552,093.74
200 <u>Personnel Services – Employee Benefits</u>				
210 Group Insurance – Contracted Provider				12,250.48
220 Social Security Contributions				40,787.76
230 PSERS Retirement Contributions				190,135.94
250 Unemployment Compensation				786.57
260 Workers' Compensation				4,010.01
270 Group Insurance – Self-Insurance				100,323.29
291 Other Retirement Plans				6,165.70
292 Health Savings Accounts				12,000.00
Total Personnel Services – Employee Benefits				\$366,459.75
300 <u>Purchased Professional and Technical Services</u>				
330 Other Professional Services				3,000.00
340 Technical Services				10,387.18
Total Purchased Professional and Technical Services				\$13,387.18
400 <u>Purchased Property Services</u>				
410 Cleaning Services				1,260.00
440 Rentals				124,355.62
Total Purchased Property Services				\$125,615.62
500 <u>Other Purchased Services</u>				
580 Travel				1,332.13
Total Other Purchased Services				\$1,332.13
600 <u>Supplies</u>				
610 General Supplies				8,587.70
650 Supplies & Fees – Technology Related				32,534.80
Total Supplies				\$41,122.50
Total 2810 Planning, Research, Development and Evaluation Services				\$1,100,010.92

LEA : 113362403 Elizabethtown Area SD

Printed 11/23/2021 11:45:10 AM

General Fund (10)				
2820 Information Services	<u>Elementary</u>	<u>Secondary</u>	<u>Federal</u>	<u>Total</u>
100 <u>Personnel Services – Salaries</u>				
100 Personnel Services – Salaries				100,176.00
Total Personnel Services – Salaries				\$100,176.00
200 <u>Personnel Services – Employee Benefits</u>				
210 Group Insurance – Contracted Provider				1,924.08
220 Social Security Contributions				7,619.64
230 PSERS Retirement Contributions				34,570.74
250 Unemployment Compensation				150.40
260 Workers' Compensation				763.74
270 Group Insurance – Self-Insurance				17,758.80
291 Other Retirement Plans				3,852.92
292 Health Savings Accounts				2,000.00
Total Personnel Services – Employee Benefits				\$68,640.32
500 <u>Other Purchased Services</u>				
530 Communications				1,097.88
550 Printing and Binding				9,717.48
580 Travel				30.24
Total Other Purchased Services				\$10,845.60
600 <u>Supplies</u>				
610 General Supplies				865.13
640 Books and Periodicals				171.95
650 Supplies & Fees – Technology Related				25,034.38
Total Supplies				\$26,071.46
Total 2820 Information Services				\$205,733.38

LEA : 113362403 Elizabethtown Area SD

Printed 11/23/2021 11:45:10 AM

General Fund (10)				
2823 Public Information Services	<u>Elementary</u>	<u>Secondary</u>	<u>Federal</u>	<u>Total</u>
100 <u>Personnel Services – Salaries</u>				
100 Personnel Services – Salaries				100,176.00
Total Personnel Services – Salaries				\$100,176.00
200 <u>Personnel Services – Employee Benefits</u>				
210 Group Insurance – Contracted Provider				1,924.08
220 Social Security Contributions				7,619.64
230 PSERS Retirement Contributions				34,570.74
250 Unemployment Compensation				150.40
260 Workers' Compensation				763.74
270 Group Insurance – Self-Insurance				17,758.80
291 Other Retirement Plans				3,852.92
292 Health Savings Accounts				2,000.00
Total Personnel Services – Employee Benefits				\$68,640.32
500 <u>Other Purchased Services</u>				
530 Communications				1,097.88
550 Printing and Binding				9,717.48
580 Travel				30.24
Total Other Purchased Services				\$10,845.60
600 <u>Supplies</u>				
610 General Supplies				865.13
640 Books and Periodicals				171.95
650 Supplies & Fees – Technology Related				25,034.38
Total Supplies				\$26,071.46
Total 2823 Public Information Services				\$205,733.38

LEA : 113362403 Elizabethtown Area SD

Printed 11/23/2021 11:45:10 AM

General Fund (10)

2830 Staff Services

	<u>Elementary</u>	<u>Secondary</u>	<u>Federal</u>	<u>Total</u>
100 <u>Personnel Services – Salaries</u>				
100 Personnel Services – Salaries				159,340.96
Total Personnel Services – Salaries				\$159,340.96
200 <u>Personnel Services – Employee Benefits</u>				
210 Group Insurance – Contracted Provider				3,116.16
220 Social Security Contributions				11,685.48
230 PSERS Retirement Contributions				54,988.55
240 Tuition Reimbursement				(4,334.40)
250 Unemployment Compensation				230.18
260 Workers' Compensation				1,632.66
270 Group Insurance – Self-Insurance				29,873.46
291 Other Retirement Plans				6,250.67
292 Health Savings Accounts				4,000.00
299 All Other Employee Benefits				9,849.60
Total Personnel Services – Employee Benefits				\$117,292.36
300 <u>Purchased Professional and Technical Services</u>				
330 Other Professional Services				370.75
360 Employee Training and Development Services			9,984.64	21,813.64
Total Purchased Professional and Technical Services			\$9,984.64	\$22,184.39
500 <u>Other Purchased Services</u>				
580 Travel				(69.32)
Total Other Purchased Services				(\$69.32)
600 <u>Supplies</u>				
610 General Supplies				5,253.95
630 Food				879.91
650 Supplies & Fees – Technology Related				21,174.45
Total Supplies				\$27,308.31
800 <u>Other Objects</u>				
810 Dues and Fees				4,172.00
Total Other Objects				\$4,172.00
Total 2830 Staff Services			\$9,984.64	\$330,228.70

LEA : 113362403 Elizabethtown Area SD

Printed 11/23/2021 11:45:10 AM

General Fund (10)				
2831 Supervision of Staff Services	<u>Elementary</u>	<u>Secondary</u>	<u>Federal</u>	<u>Total</u>
100 <u>Personnel Services – Salaries</u>				
100 Personnel Services – Salaries				159,340.96
Total Personnel Services – Salaries				\$159,340.96
200 <u>Personnel Services – Employee Benefits</u>				
210 Group Insurance – Contracted Provider				3,116.16
220 Social Security Contributions				11,685.48
230 PSERS Retirement Contributions				54,988.55
250 Unemployment Compensation				230.18
260 Workers' Compensation				1,632.66
270 Group Insurance – Self-Insurance				29,873.46
291 Other Retirement Plans				6,250.67
292 Health Savings Accounts				4,000.00
299 All Other Employee Benefits				9,849.60
Total Personnel Services – Employee Benefits				\$121,626.76
300 <u>Purchased Professional and Technical Services</u>				
330 Other Professional Services				370.75
Total Purchased Professional and Technical Services				\$370.75
500 <u>Other Purchased Services</u>				
580 Travel				440.68
Total Other Purchased Services				\$440.68
600 <u>Supplies</u>				
610 General Supplies				336.68
630 Food				879.91
Total Supplies				\$1,216.59
800 <u>Other Objects</u>				
810 Dues and Fees				675.00
Total Other Objects				\$675.00
Total 2831 Supervision of Staff Services				\$283,670.74

LEA : 113362403 Elizabethtown Area SD

Printed 11/23/2021 11:45:10 AM

General Fund (10)

2832 Recruitment and Placement Services	<u>Elementary</u>	<u>Secondary</u>	<u>Federal</u>	<u>Total</u>
600 <u>Supplies</u>				
650 Supplies & Fees – Technology Related				21,174.45
Total Supplies				\$21,174.45
800 <u>Other Objects</u>				
810 Dues and Fees				347.00
Total Other Objects				\$347.00
Total 2832 Recruitment and Placement Services				\$21,521.45

LEA : 113362403 Elizabethtown Area SD

Printed 11/23/2021 11:45:10 AM

General Fund (10)

2834 Staff Development Services – Non-Instructional, Certified Staff Only	<u>Elementary</u>	<u>Secondary</u>	<u>Federal</u>	<u>Total</u>
200 <u>Personnel Services – Employee Benefits</u>				
240 Tuition Reimbursement				(4,334.40)
Total Personnel Services – Employee Benefits				(\$4,334.40)
300 <u>Purchased Professional and Technical Services</u>				
360 Employee Training and Development Services			7,434.64	10,227.64
Total Purchased Professional and Technical Services			\$7,434.64	\$10,227.64
500 <u>Other Purchased Services</u>				
580 Travel				(255.00)
Total Other Purchased Services				(\$255.00)
600 <u>Supplies</u>				
610 General Supplies				959.39
Total Supplies				\$959.39
Total 2834 Staff Development Services – Non-Instructional, Certified Staff Only			\$7,434.64	\$6,597.63

LEA : 113362403 Elizabethtown Area SD

Printed 11/23/2021 11:45:10 AM

General Fund (10)

2835 Health Services

Elementary Secondary Federal Total

600 <u>Supplies</u>				
610 General Supplies				3,957.88
Total Supplies				\$3,957.88
800 <u>Other Objects</u>				
810 Dues and Fees				3,150.00
Total Other Objects				\$3,150.00
Total 2835 Health Services				\$7,107.88

LEA : 113362403 Elizabethtown Area SD

Printed 11/23/2021 11:45:10 AM

General Fund (10)

2836 Staff Development Services – Non-Instructional, Non-Certified Staff Only	<u>Elementary</u>	<u>Secondary</u>	<u>Federal</u>	<u>Total</u>
300 <u>Purchased Professional and Technical Services</u>				
360 Employee Training and Development Services			2,550.00	11,586.00
Total Purchased Professional and Technical Services			\$2,550.00	\$11,586.00
500 <u>Other Purchased Services</u>				
580 Travel				(255.00)
Total Other Purchased Services				(\$255.00)
Total 2836 Staff Development Services – Non-Instructional, Non-Certified Staff Only			\$2,550.00	\$11,331.00

LEA : 113362403 Elizabethtown Area SD

Printed 11/23/2021 11:45:10 AM

General Fund (10)

2900 Other Support Services	<u>Elementary</u>	<u>Secondary</u>	<u>Federal</u>	<u>Total</u>
500 <u>Other Purchased Services</u>				
595 IU Payments By Withholding				26,822.88
Total Other Purchased Services				\$26,822.88
Total 2900 Other Support Services				\$26,822.88

LEA : 113362403 Elizabethtown Area SD

Printed 11/23/2021 11:45:10 AM

General Fund (10)

2910 Support Services Not Listed Elsewhere In the 2000 Series

Elementary Secondary Federal Total

500 Other Purchased Services

595 IU Payments By Withholding 26,822.88

Total Other Purchased Services \$26,822.88

Total 2910 Support Services Not Listed Elsewhere In the 2000 Series \$26,822.88

LEA : 113362403 Elizabethtown Area SD

Printed 11/23/2021 11:45:33 AM

General Fund (10)

3000 Operation of Non-Instructional Services		<u>Total</u>
100 <u>Personnel Services – Salaries</u>		
100 Personnel Services – Salaries		520,050.46
Total Personnel Services – Salaries		\$520,050.46
200 <u>Personnel Services – Employee Benefits</u>		
210 Group Insurance – Contracted Provider		3,414.00
220 Social Security Contributions		39,815.46
230 PSERS Retirement Contributions		157,830.54
250 Unemployment Compensation		549.82
260 Workers' Compensation		1,536.65
270 Group Insurance – Self-Insurance		35,517.69
291 Other Retirement Plans		3,886.50
292 Health Savings Accounts		4,000.00
Total Personnel Services – Employee Benefits		\$246,550.66
300 <u>Purchased Professional and Technical Services</u>		
330 Other Professional Services		73,801.03
350 Security / Safety Services		3,117.09
390 Other Purchased Professional and Technical Services		76,035.25
Total Purchased Professional and Technical Services		\$152,953.37
400 <u>Purchased Property Services</u>		
410 Cleaning Services		3,037.70
430 Repairs and Maintenance Services		9,561.05
Total Purchased Property Services		\$12,598.75
500 <u>Other Purchased Services</u>		
510 Student Transportation Services		51,014.89
580 Travel		328.16
Total Other Purchased Services		\$51,343.05
600 <u>Supplies</u>		
610 General Supplies		38,700.91
650 Supplies & Fees – Technology Related		2,720.01
Total Supplies		\$41,420.92
800 <u>Other Objects</u>		
810 Dues and Fees		42,136.78
Total Other Objects		\$42,136.78
Total 3000 Operation of Non-Instructional Services		\$1,067,053.99

LEA : 113362403 Elizabethtown Area SD

Printed 11/23/2021 11:45:33 AM

General Fund (10)

3200 Student Activities

	<u>Elementary</u>	<u>Secondary</u>	<u>Federal</u>	<u>Total</u>
100 <u>Personnel Services – Salaries</u>				
100 Personnel Services – Salaries				515,434.24
Total Personnel Services – Salaries				\$515,434.24
200 <u>Personnel Services – Employee Benefits</u>				
210 Group Insurance – Contracted Provider				3,414.00
220 Social Security Contributions				39,163.77
230 PSERS Retirement Contributions				157,830.54
250 Unemployment Compensation				549.82
260 Workers' Compensation				1,536.65
270 Group Insurance – Self-Insurance				35,517.69
291 Other Retirement Plans				3,886.50
292 Health Savings Accounts				4,000.00
Total Personnel Services – Employee Benefits				\$245,898.97
300 <u>Purchased Professional and Technical Services</u>				
330 Other Professional Services				73,801.03
350 Security / Safety Services				3,117.09
390 Other Purchased Professional and Technical Services				42,490.62
Total Purchased Professional and Technical Services				\$119,408.74
400 <u>Purchased Property Services</u>				
410 Cleaning Services				3,037.70
430 Repairs and Maintenance Services				9,561.05
Total Purchased Property Services				\$12,598.75
500 <u>Other Purchased Services</u>				
510 Student Transportation Services				51,014.89
580 Travel				328.16
Total Other Purchased Services				\$51,343.05
600 <u>Supplies</u>				
610 General Supplies				38,700.91
650 Supplies & Fees – Technology Related				2,720.01
Total Supplies				\$41,420.92
800 <u>Other Objects</u>				
810 Dues and Fees				16,252.51
Total Other Objects				\$16,252.51
Total 3200 Student Activities				\$1,002,357.18

LEA : 113362403 Elizabethtown Area SD

Printed 11/23/2021 11:45:33 AM

General Fund (10)

3300 Community Services	<u>Elementary</u>	<u>Secondary</u>	<u>Federal</u>	<u>Total</u>
100 <u>Personnel Services – Salaries</u>				
100 Personnel Services – Salaries				4,616.22
Total Personnel Services – Salaries				\$4,616.22
200 <u>Personnel Services – Employee Benefits</u>				
220 Social Security Contributions				651.69
Total Personnel Services – Employee Benefits				\$651.69
300 <u>Purchased Professional and Technical Services</u>				
390 Other Purchased Professional and Technical Services				33,544.63
Total Purchased Professional and Technical Services				\$33,544.63
800 <u>Other Objects</u>				
810 Dues and Fees				25,884.27
Total Other Objects				\$25,884.27
Total 3300 Community Services				\$64,696.81

General Fund (10)

5000 Other Expenditures and Financing Uses

Total

800 <u>Other Objects</u>	
880 Refunds of Prior Years' Receipts	5,651.02
Total Other Objects	\$5,651.02
900 <u>Other Uses of Funds</u>	
932 Capital Reserve Fund Transfers Applicable To Fund 32	1,100,000.00
939 Other Fund Transfers	4,059,377.08
Total Other Uses of Funds	\$5,159,377.08
Total 5000 Other Expenditures and Financing Uses	\$5,165,028.10

LEA : 113362403 Elizabethtown Area SD

Printed 11/23/2021 11:46:02 AM

General Fund (10)

5100 Debt Service / Other Expenditures and Financing Uses	<u>Elementary</u>	<u>Secondary</u>	<u>Federal</u>	<u>Total</u>
800 <u>Other Objects</u>				
880 Refunds of Prior Years' Receipts				5,651.02
Total Other Objects				\$5,651.02
Total 5100 Debt Service / Other Expenditures and Financing Uses				\$5,651.02

LEA : 113362403 Elizabethtown Area SD

Printed 11/23/2021 11:46:02 AM

General Fund (10)

5130 Refund of Prior Year Revenues / Receipts	<u>Elementary</u>	<u>Secondary</u>	<u>Federal</u>	<u>Total</u>
800 <u>Other Objects</u>				
880 Refunds of Prior Years' Receipts				5,651.02
Total Other Objects				\$5,651.02
Total 5130 Refund of Prior Year Revenues / Receipts				\$5,651.02

Total

1,100,000.00

4,059,377.08

\$5,159,377.08

\$5,159,377.08

LEA : 113362403 Elizabethtown Area SD

Printed 11/23/2021 11:46:02 AM

General Fund (10)

5230 Capital Projects Fund Transfers	<u>Elementary</u>	<u>Secondary</u>	<u>Federal</u>	<u>Total</u>
900 <u>Other Uses of Funds</u>				
932 Capital Reserve Fund Transfers Applicable To Fund 32				1,100,000.00
Total Other Uses of Funds				\$1,100,000.00
Total 5230 Capital Projects Fund Transfers				\$1,100,000.00

LEA : 113362403 Elizabethtown Area SD

Printed 11/23/2021 11:46:02 AM

General Fund (10)

5240 Debt Service Fund Transfers	<u>Elementary</u>	<u>Secondary</u>	<u>Federal</u>	<u>Total</u>
900 <u>Other Uses of Funds</u>				
939 Other Fund Transfers				4,059,377.08
Total Other Uses of Funds				\$4,059,377.08
Total 5240 Debt Service Fund Transfers				\$4,059,377.08

LEA : 113362403 Elizabethtown Area SD

Printed 11/23/2021 11:45:15 AM

Capital Reserve Fund - § 1431 (32)

2000 Support Services		<u>Total</u>
400 <u>Purchased Property Services</u>		
430	Repairs and Maintenance Services	87,188.74
450	Construction Services	30,012.00
Total Purchased Property Services		\$117,200.74
700 <u>Property</u>		
752	Capital Equipment – Original and Additional	69,275.31
766	Capitalized Technology Equipment – Replacement	463,504.00
Total Property		\$532,779.31
Total 2000 Support Services		\$649,980.05

LEA : 113362403 Elizabethtown Area SD

Printed 11/23/2021 11:45:15 AM

Capital Reserve Fund - § 1431 (32)

2600 Operation and Maintenance of Plant Services

Elementary Secondary Federal Total

400 Purchased Property Services

430 Repairs and Maintenance Services 87,188.74

450 Construction Services 30,012.00

Total Purchased Property Services \$117,200.74

700 Property

752 Capital Equipment – Original and Additional 69,275.31

766 Capitalized Technology Equipment – Replacement 463,504.00

Total Property \$532,779.31

Total 2600 Operation and Maintenance of Plant Services \$649,980.05

LEA : 113362403 Elizabethtown Area SD

Printed 11/23/2021 11:45:15 AM

Capital Reserve Fund - § 1431 (32)

2620 Operation of Buildings Services	<u>Elementary</u>	<u>Secondary</u>	<u>Federal</u>	<u>Total</u>
700 <u>Property</u>				
752 Capital Equipment – Original and Additional				26,609.31
Total Property				\$26,609.31
Total 2620 Operation of Buildings Services				\$26,609.31

LEA : 113362403 Elizabethtown Area SD

Printed 11/23/2021 11:45:15 AM

Capital Reserve Fund - § 1431 (32)

2650 Vehicle Operation and Maintenance Services (Other Than Student Transportation Vehicles)	<u>Elementary</u>	<u>Secondary</u>	<u>Federal</u>	<u>Total</u>
700 <u>Property</u>				
752 Capital Equipment – Original and Additional				42,666.00
Total Property				\$42,666.00
Total 2650 Vehicle Operation and Maintenance Services (Other Than Student Transportation Vehicles)				\$42,666.00

Page - 5 of 6

[illegible][illegible]

30,012.00

\$30,012.00

463,504.00

\$463,504.00

\$493,516.00

LEA : 113362403 Elizabethtown Area SD

Printed 11/23/2021 11:45:15 AM

Capital Reserve Fund - § 1431 (32)

2690 Other Operation and Maintenance of Plant Services

<u>Elementary</u>	<u>Secondary</u>	<u>Federal</u>	<u>Total</u>
-------------------	------------------	----------------	--------------

400 Purchased Property Services

430 Repairs and Maintenance Services			87,188.74
--------------------------------------	--	--	-----------

Total Purchased Property Services			\$87,188.74
-----------------------------------	--	--	-------------

Total 2690 Other Operation and Maintenance of Plant Services			\$87,188.74
--	--	--	-------------

LEA : 113362403 Elizabethtown Area SD

Printed 11/23/2021 11:45:45 AM

Capital Reserve Fund - § 1431 (32)

4000 Facilities Acquisition, Construction and Improvement Services		<u>Total</u>
300 <u>Purchased Professional and Technical Services</u>		
330 Other Professional Services		20,890.05
Total Purchased Professional and Technical Services		\$20,890.05
400 <u>Purchased Property Services</u>		
430 Repairs and Maintenance Services		8,391.00
450 Construction Services		191,535.50
490 Other Purchased Property Services		2,464.50
Total Purchased Property Services		\$202,391.00
700 <u>Property</u>		
752 Capital Equipment – Original and Additional		50,926.69
756 Capitalized Technology Equipment – Original		24,769.75
Total Property		\$75,696.44
Total 4000 Facilities Acquisition, Construction and Improvement Services		\$298,977.49

LEA : 113362403 Elizabethtown Area SD

Printed 11/23/2021 11:45:45 AM

Capital Reserve Fund - § 1431 (32)				
4400 Architecture and Engineering Services / Educational Specifications – Improvements	<u>Elementary</u>	<u>Secondary</u>	<u>Federal</u>	<u>Total</u>
300 <u>Purchased Professional and Technical Services</u>				
330 Other Professional Services				20,890.05
Total Purchased Professional and Technical Services				\$20,890.05
Total 4400 Architecture and Engineering Services / Educational Specifications – Improvements				\$20,890.05

LEA : 113362403 Elizabethtown Area SD

Printed 11/23/2021 11:45:45 AM

Capital Reserve Fund - § 1431 (32)

4600 Existing Building Improvement Services

Elementary Secondary Federal Total

400 Purchased Property Services

430	Repairs and Maintenance Services			8,391.00
450	Construction Services			191,535.50
490	Other Purchased Property Services			2,464.50

Total Purchased Property Services				\$202,391.00
--	--	--	--	---------------------

700 Property

752	Capital Equipment – Original and Additional			50,926.69
756	Capitalized Technology Equipment – Original			24,769.75

Total Property				\$75,696.44
-----------------------	--	--	--	--------------------

Total 4600 Existing Building Improvement Services				\$278,087.44
--	--	--	--	---------------------

LEA : 113362403 Elizabethtown Area SD

Printed 11/23/2021 11:45:18 AM

Other Capital Projects Fund (39)

2000 Support Services		<u>Total</u>
600 <u>Supplies</u>		
620 Energy		1,397.02
Total Supplies		\$1,397.02
800 <u>Other Objects</u>		
810 Dues and Fees		2,675.00
Total Other Objects		\$2,675.00
Total 2000 Support Services		\$4,072.02

LEA : 113362403 Elizabethtown Area SD

Printed 11/23/2021 11:45:18 AM

Other Capital Projects Fund (39)

2300 Support Services – Administration

<u>Elementary</u>	<u>Secondary</u>	<u>Federal</u>	<u>Total</u>
-------------------	------------------	----------------	--------------

800 Other Objects

810 Dues and Fees			2,675.00
-------------------	--	--	----------

Total Other Objects			\$2,675.00
----------------------------	--	--	-------------------

Total 2300 Support Services – Administration			\$2,675.00
---	--	--	-------------------

LEA : 113362403 Elizabethtown Area SD

Printed 11/23/2021 11:45:18 AM

Other Capital Projects Fund (39)

2390 Other Administration Services

	<u>Elementary</u>	<u>Secondary</u>	<u>Federal</u>	<u>Total</u>
800 <u>Other Objects</u>				
810 Dues and Fees				2,675.00
Total Other Objects				\$2,675.00
Total 2390 Other Administration Services				\$2,675.00

LEA : 113362403 Elizabethtown Area SD

Printed 11/23/2021 11:45:18 AM

Other Capital Projects Fund (39)

2600 Operation and Maintenance of Plant Services

<u>Elementary</u>	<u>Secondary</u>	<u>Federal</u>	<u>Total</u>
-------------------	------------------	----------------	--------------

600 <u>Supplies</u>				
620 Energy				1,397.02

Total Supplies				\$1,397.02
Total 2600 Operation and Maintenance of Plant Services				\$1,397.02

LEA : 113362403 Elizabethtown Area SD

Printed 11/23/2021 11:45:18 AM

Other Capital Projects Fund (39)

2620 Operation of Buildings Services	<u>Elementary</u>	<u>Secondary</u>	<u>Federal</u>	<u>Total</u>
600 <u>Supplies</u>				
620 Energy				1,397.02
Total Supplies				\$1,397.02
Total 2620 Operation of Buildings Services				\$1,397.02

LEA : 113362403 Elizabethtown Area SD

Printed 11/23/2021 11:45:49 AM

Other Capital Projects Fund (39)

4000 Facilities Acquisition, Construction and Improvement Services

Total

300 <u>Purchased Professional and Technical Services</u>	
330 Other Professional Services	330,180.40
Total Purchased Professional and Technical Services	\$330,180.40
400 <u>Purchased Property Services</u>	
430 Repairs and Maintenance Services	4,685.00
450 Construction Services	3,860,976.24
Total Purchased Property Services	\$3,865,661.24
600 <u>Supplies</u>	
610 General Supplies	191,785.56
Total Supplies	\$191,785.56
700 <u>Property</u>	
762 Capitalized Equipment - Replacement	105,212.69
Total Property	\$105,212.69
Total 4000 Facilities Acquisition, Construction and Improvement Services	\$4,492,839.89

LEA : 113362403 Elizabethtown Area SD

Printed 11/23/2021 11:45:49 AM

Other Capital Projects Fund (39)

4400 Architecture and Engineering Services / Educational Specifications – Improvements	<u>Elementary</u>	<u>Secondary</u>	<u>Federal</u>	<u>Total</u>
300 <u>Purchased Professional and Technical Services</u>				
330 Other Professional Services				262,763.20
Total Purchased Professional and Technical Services				\$262,763.20
Total 4400 Architecture and Engineering Services / Educational Specifications – Improvements				\$262,763.20

LEA : 113362403 Elizabethtown Area SD

Printed 11/23/2021 11:45:49 AM

Other Capital Projects Fund (39)

4600 Existing Building Improvement Services

Elementary Secondary Federal Total

300 Purchased Professional and Technical Services

330 Other Professional Services 67,417.20

Total Purchased Professional and Technical Services \$67,417.20

400 Purchased Property Services

430 Repairs and Maintenance Services 4,685.00

450 Construction Services 3,860,976.24

Total Purchased Property Services \$3,865,661.24

600 Supplies

610 General Supplies 191,785.56

Total Supplies \$191,785.56

700 Property

762 Capitalized Equipment - Replacement 105,212.69

Total Property \$105,212.69

Total 4600 Existing Building Improvement Services \$4,230,076.69

LEA : 113362403 Elizabethtown Area SD

Printed 11/23/2021 11:45:23 AM

Debt Service Fund (40)

2000 Support Services

Total

800 Other Objects
810 Dues and Fees

322,028.30

Total Other Objects	\$322,028.30
Total 2000 Support Services	\$322,028.30

<u>Elementary</u>	<u>Secondary</u>	<u>Federal</u>	<u>Total</u>
-------------------	------------------	----------------	--------------

<u>Elementary</u>	<u>Secondary</u>	<u>Federal</u>	<u>Total</u>
-------------------	------------------	----------------	--------------

<u>Elementary</u>	<u>Secondary</u>	<u>Federal</u>	<u>Total</u>
-------------------	------------------	----------------	--------------

322,028.30

\$322,028.30

\$322,028.30

LEA : 113362403 Elizabethtown Area SD

Printed 11/23/2021 11:45:23 AM

Debt Service Fund (40)

2390 Other Administration Services

<u>Elementary</u>	<u>Secondary</u>	<u>Federal</u>	<u>Total</u>
-------------------	------------------	----------------	--------------

800 Other Objects

810 Dues and Fees			322,028.30
-------------------	--	--	------------

Total Other Objects			\$322,028.30
----------------------------	--	--	---------------------

Total 2390 Other Administration Services			\$322,028.30
---	--	--	---------------------

LEA : 113362403 Elizabethtown Area SD

Printed 11/23/2021 11:46:05 AM

Debt Service Fund (40)

5000 Other Expenditures and Financing Uses

Total

800 <u>Other Objects</u>	
830 Interest	1,829,868.48
Total Other Objects	\$1,829,868.48
900 <u>Other Uses of Funds</u>	
910 Redemption of Principal	22,735,000.00
Total Other Uses of Funds	\$22,735,000.00
Total 5000 Other Expenditures and Financing Uses	\$24,564,868.48

Debt Service Fund (40)

5100 Debt Service / Other Expenditures and Financing Uses	<u>Elementary</u>	<u>Secondary</u>	<u>Federal</u>	<u>Total</u>
800 <u>Other Objects</u>				
830 Interest				1,829,868.48
Total Other Objects				\$1,829,868.48
900 <u>Other Uses of Funds</u>				
910 Redemption of Principal				22,735,000.00
Total Other Uses of Funds				\$22,735,000.00
Total 5100 Debt Service / Other Expenditures and Financing Uses				\$24,564,868.48

LEA : 113362403 Elizabethtown Area SD

Printed 11/23/2021 11:46:05 AM

Debt Service Fund (40)

5110 Debt Service	<u>Elementary</u>	<u>Secondary</u>	<u>Federal</u>	<u>Total</u>
800 <u>Other Objects</u>				
830 Interest				1,829,868.48
Total Other Objects				\$1,829,868.48
900 <u>Other Uses of Funds</u>				
910 Redemption of Principal				2,430,000.00
Total Other Uses of Funds				\$2,430,000.00
Total 5110 Debt Service				\$4,259,868.48

LEA : 113362403 Elizabethtown Area SD

Printed 11/23/2021 11:46:05 AM

Debt Service Fund (40)

5120 Debt Service – Refunded Bonds	<u>Elementary</u>	<u>Secondary</u>	<u>Federal</u>	<u>Total</u>
900 <u>Other Uses of Funds</u>				
910 Redemption of Principal				20,305,000.00
Total Other Uses of Funds				\$20,305,000.00
Total 5120 Debt Service – Refunded Bonds				\$20,305,000.00

LEA : 113362403 Elizabethtown Area SD

Printed 11/23/2021 11:46:36 AM

	<u>General Fund(10)</u>	<u>Student Sponsored Activity Fund(21)</u>	<u>Public Purpose Trust(27)</u>	<u>Other Compt Approved (28)</u>	<u>Athletic / Activity(29)</u>
1000 <u>Instruction</u>					
1100 Regular Programs - Elementary / Secondary	30,491,730.05				
1200 Special Programs - Elementary / Secondary	9,482,327.46				
1300 Vocational Education	1,952,321.89				
1400 Other Instructional Programs - Elementary / Secondary	364,133.62				
1500 Nonpublic School Programs	32,693.39				
1700 Higher Education Programs for Secondary Students	2,250.59				
Total Instruction	\$42,325,457.00				
2000 <u>Support Services</u>					
2100 Support Services - Students	2,562,753.45				
2200 Support Services - Instructional Staff	980,561.89				
2300 Support Services - Administration	3,909,577.34				
2400 Support Services - Pupil Health	812,178.84				
2500 Support Services - Business	1,756,757.73				
2600 Operation and Maintenance of Plant Services	4,717,111.24				
2700 Student Transportation Services	2,331,951.55				
2800 Support Services - Central	1,635,973.00				
2900 Other Support Services	26,822.88				
Total Support Services	\$18,733,687.92				
3000 <u>Operation of Non-Instructional Services</u>					
3200 Student Activities	1,002,357.18				
3300 Community Services	64,696.81				
Total Operation of Non-Instructional Services	\$1,067,053.99				
4000 <u>Facilities Acquisition, Construction and Improvement Services</u>					
4400 Architecture and Engineering Services / Educational Specifications - Improvements					
4600 Existing Building Improvement Services					
Total Facilities Acquisition, Construction and Improvement Services					
5000 <u>Other Expenditures and Financing Uses</u>					
5100 Debt Service / Other Expenditures and Financing Uses	5,651.02				
5200 Interfund Transfers - Out	5,159,377.08				
Total Other Expenditures and Financing Uses	\$5,165,028.10				
TOTAL ACTUAL EXPENDITURES & OTHER FINANCING USES	\$67,291,227.01				

LEA : 113362403 Elizabethtown Area SD

Printed 11/23/2021 11:46:36 AM

	<u>Capital Reserve (690.1850)(31)</u>	<u>Capital Reserve (1431)(32)</u>	<u>Other Capital Projects Fund(39)</u>	<u>Debt Service(40)</u>	<u>Permanent(90)</u>
1000 <u>Instruction</u>					
1100 Regular Programs - Elementary / Secondary					
1200 Special Programs - Elementary / Secondary					
1300 Vocational Education					
1400 Other Instructional Programs - Elementary / Secondary					
1500 Nonpublic School Programs					
1700 Higher Education Programs for Secondary Students					
Total Instruction					
2000 <u>Support Services</u>					
2100 Support Services - Students					
2200 Support Services - Instructional Staff					
2300 Support Services - Administration			2,675.00	322,028.30	
2400 Support Services - Pupil Health					
2500 Support Services - Business					
2600 Operation and Maintenance of Plant Services		649,980.05	1,397.02		
2700 Student Transportation Services					
2800 Support Services - Central					
2900 Other Support Services					
Total Support Services		\$649,980.05	\$4,072.02	\$322,028.30	
3000 <u>Operation of Non-Instructional Services</u>					
3200 Student Activities					
3300 Community Services					
Total Operation of Non-Instructional Services					
4000 <u>Facilities Acquisition, Construction and Improvement Services</u>					
4400 Architecture and Engineering Services / Educational Specifications - Improvements		20,890.05	262,763.20		
4600 Existing Building Improvement Services		278,087.44	4,230,076.69		
Total Facilities Acquisition, Construction and Improvement Services		\$298,977.49	\$4,492,839.89		
5000 <u>Other Expenditures and Financing Uses</u>					
5100 Debt Service / Other Expenditures and Financing Uses				24,564,868.48	
5200 Interfund Transfers - Out					
Total Other Expenditures and Financing Uses				\$24,564,868.48	
TOTAL ACTUAL EXPENDITURES & OTHER FINANCING USES		\$948,957.54	\$4,496,911.91	\$24,886,896.78	

LEA : 113362403 Elizabethtown Area SD

Printed 11/23/2021 11:46:36 AM

	<u>Total</u>
1000 <u>Instruction</u>	
1100 Regular Programs - Elementary / Secondary	30,491,730.05
1200 Special Programs - Elementary / Secondary	9,482,327.46
1300 Vocational Education	1,952,321.89
1400 Other Instructional Programs - Elementary / Secondary	364,133.62
1500 Nonpublic School Programs	32,693.39
1700 Higher Education Programs for Secondary Students	2,250.59
Total Instruction	\$42,325,457.00
2000 <u>Support Services</u>	
2100 Support Services - Students	2,562,753.45
2200 Support Services - Instructional Staff	980,561.89
2300 Support Services - Administration	4,234,280.64
2400 Support Services - Pupil Health	812,178.84
2500 Support Services - Business	1,756,757.73
2600 Operation and Maintenance of Plant Services	5,368,488.31
2700 Student Transportation Services	2,331,951.55
2800 Support Services - Central	1,635,973.00
2900 Other Support Services	26,822.88
Total Support Services	\$19,709,768.29
3000 <u>Operation of Non-Instructional Services</u>	
3200 Student Activities	1,002,357.18
3300 Community Services	64,696.81
Total Operation of Non-Instructional Services	\$1,067,053.99
4000 <u>Facilities Acquisition, Construction and Improvement Services</u>	
4400 Architecture and Engineering Services / Educational Specifications - Improvements	283,653.25
4600 Existing Building Improvement Services	4,508,164.13
Total Facilities Acquisition, Construction and Improvement Services	\$4,791,817.38
5000 <u>Other Expenditures and Financing Uses</u>	
5100 Debt Service / Other Expenditures and Financing Uses	24,570,519.50
5200 Interfund Transfers - Out	5,159,377.08
Total Other Expenditures and Financing Uses	\$29,729,896.58
TOTAL ACTUAL EXPENDITURES & OTHER FINANCING USES	\$97,623,993.24

LEA : 113362403 Elizabethtown Area SD

Printed 11/23/2021 11:46:54 AM

PSERS Salary Data (Salary Data should relate to the General Fund only)

Amount	Description	Amount
	Total Salary Base for salaries subject to PSERS withholding	28,461,989.98
	Total Federally Funded salaries subject to PSERS withholding	1,620,725.23

Title I Expenditure Data

Amount	Description	Amount
	Expenditures Funded with Current Title I Funds	430,929.13
	Expenditures Funded with Carry over Title I Funds	
Total Title I Expenditure Data		\$430,929.13

Title IV Revenue Data

Amount	Description	Amount
	Revenue from Title IV-A-1: Student Support and Academic Enrichment Grants	26,984.17
	Revenue from Title IV-B: 21st Century Community Learning Centers	

Title V Revenue Data

Amount	Description	Amount
	Revenue from Title V-B-2: Rural and Low-Income School Programs	
	Revenue from Title V-B-1: Small Rural School Achievement (Directly from the Federal Govt)	

1 .	<u>Current Special Education Expenditures/Expenses within Functions 1000, 2000, 3100, and 3200</u>	15,460,852.13
2 .	<u>Current Special Education Expenditures for Instruction Functions 1000 and 3200</u>	12,250,000.88
3 .	<u>Current Special Education Expenditures for Pupil Support Services Function 2100</u>	392,293.61
4 .	<u>Current Special Education Expenditures for Instructional Staff Support Services Function 2200</u>	149,663.29
5 .	<u>Current Special Education Expenditures for Student Transportation Support Services Function 2700</u>	303,377.33

Note: Do not report total Special Education expenditures for the functions listed above. Refer to the AFR User Manual for specific instructions on Funds/Functions/Objects to be included and excluded on each line.

Benefits for Staff Relative to Collective Bargaining Agreements

	OBJECT	COVERED	NOT COVERED	TOTAL
10 General Fund				
	211 Medical Insurance			
	212 Dental Insurance			
	215 Eye Care Insurance			
	216 Prescription Insurance			
	271 Self-Insurance Medical Benefits	4,070,807.12	1,356,935.71	5,427,742.83
	272 Self-Insurance Dental Benefits	314,006.76	104,668.92	418,675.68
	275 Self-Insurance Eye Care Benefits	42,365.47	14,121.82	56,487.29
	276 Self-Insurance Prescription Benefits			
	FUND TOTAL	\$4,427,179.35	\$1,475,726.45	\$5,902,905.80
50 Enterprise Fund				
	211 Medical Insurance			
	212 Dental Insurance			
	215 Eye Care Insurance			
	216 Prescription Insurance			
	271 Self-Insurance Medical Benefits		55,673.52	55,673.52
	272 Self-Insurance Dental Benefits		2,594.40	2,594.40
	275 Self-Insurance Eye Care Benefits		663.84	663.84
	276 Self-Insurance Prescription Benefits			
	FUND TOTAL		\$58,931.76	\$58,931.76
60 Internal Service Fund	No Self Insurance data to report			
	211 Medical Insurance			
	212 Dental Insurance			
	215 Eye Care Insurance			
	216 Prescription Insurance			
	271 Self-Insurance Medical Benefits			
	272 Self-Insurance Dental Benefits			
	275 Self-Insurance Eye Care Benefits			
	276 Self-Insurance Prescription Benefits			
	FUND TOTAL			
Total of All Funds		\$4,427,179.35	\$1,534,658.21	\$5,961,837.56

LEA : 113362403 Elizabethtown Area SD

Printed 11/23/2021 11:47:09 AM

Function	Special Education (Prior Year)	Nonspecial Education (Prior Year)	Total (Prior Year)	Special Education (Current Year)	Nonspecial Education (Current Year)	Total (Current Year)
2120 Guidance Services	216,114.06	1,134,598.80	1,350,712.86	239,117.25	1,255,365.59	1,494,482.84
2140 Psychological Services	86,009.09	451,547.74	537,556.83	87,513.14	459,443.96	546,957.10
2150 Speech Pathology and Audiology Services						
2160 Social Work Services	29,088.51	152,714.70	181,803.21	28,858.24	151,505.73	180,363.97
2260 Instruction and Curriculum Development Services	2,274.82	11,942.78	14,217.60	2,850.00		2,850.00
2350 Legal and Accounting Services	5,580.08	29,295.42	34,875.50	4,287.84	22,511.16	26,799.00
2420 Medical Services	613.34	3,220.06	3,833.40	568.32		568.32
2440 Nursing Services	163,442.21	666,446.60	829,888.81	129,460.07	679,665.34	809,125.41
2700 Student Transportation Services	368,906.42	1,881,663.47	2,250,569.89	373,112.25	1,958,839.30	2,331,951.55
Total	\$872,028.53	\$4,331,429.57	\$5,203,458.10	\$865,767.11	\$4,527,331.08	\$5,393,098.19

LEA : 113362403 Elizabethtown Area SD

Printed 11/23/2021 11:47:20 AM

(PRINCIPAL AMOUNTS ONLY)

GOVERNMENTAL FUNDS/ ACTIVITIES

	Short-Term Borrowing	General Obligation Bonds/Notes	Authority Building Obligations	Other Long-Term Debt	Other Post- Employment Benefits (OPEB)	Compensated Absences	Net Pension Liability	Total
1. Debt at Beginning of Fiscal Year		56,335,000.00			4,826,000.00	1,497,889.00	91,975,000.00	154,633,889.00
2. Additional Debt Incurred During Year		19,990,000.00			329,000.00	131,773.00	6,084,000.00	26,534,773.00
3. Retirements and Repayments		22,735,000.00			219,000.00	82,175.00		23,036,175.00
4. Debt at End of Fiscal Year		53,590,000.00			4,936,000.00	1,547,487.00	98,059,000.00	158,132,487.00
5. Accreted Interest at End Of Fiscal Year								
6. Total Debt and Accreted Interest		53,590,000.00			4,936,000.00	1,547,487.00	98,059,000.00	158,132,487.00
7. Current Portion P&I - Due within 1 year		4,440,636.25						4,440,636.25
8. Interest Paid during current fiscal year		1,829,868.58						1,829,868.58

(PRINCIPAL AMOUNTS ONLY)

PROPRIETARY FUNDS

	Short-Term Borrowing	General Obligation Bonds/Notes	Authority Building Obligations	Other Long-Term Debt	Other Post- Employment Benefits (OPEB)	Compensated Absences	Net Pension Liability	Total
1. Debt at Beginning of Fiscal Year					90,000.00		920,000.00	1,010,000.00
2. Additional Debt Incurred During Year					2,000.00		61,000.00	63,000.00
3. Retirements and Repayments								
4. Debt at End of Fiscal Year					92,000.00		981,000.00	1,073,000.00
5. Accreted Interest at End Of Fiscal Year								
6. Total Debt and Accreted Interest					92,000.00		981,000.00	1,073,000.00
7. Current Portion P&I - Due within 1 year								
8. Interest Paid during current fiscal year								

LEA : 113362403 Elizabethtown Area SD

Printed 11/23/2021 11:47:20 AM

Total Principal and Interest Payments Made by Your School - All Funds

Function	Fund		Principal (910)	Principal (920)	Interest (830)	Total (Principal +Interest)	Misc Other Uses (990)
5110	10	General Fund					
5110	20	Special Revenue Funds					
5110	30	Capital Projects Funds					
5110	40	Debt Service Fund	2,430,000.00		1,829,868.48	4,259,868.48	
5110	90	Permanent Fund					
5120	10	General Fund					
5120	20	Special Revenue Funds					
5120	30	Capital Projects Funds					
5120	40	Debt Service Fund	20,305,000.00			20,305,000.00	
Total Debt Payments - Governmental Funds			\$22,735,000.00		\$1,829,868.48	\$24,564,868.48	

Function	Fund		Principal (910)	Principal (920)	Interest (830)	Total (Principal +Interest)
5110	50	Enterprise Fund				
5110	60	Internal Service Fund				
5120	50	Enterprise Fund				
5120	60	Internal Service Fund				
Total Debt Payments - Proprietary Funds						

LEA : 113362403 Elizabethtown Area SD

Printed 11/23/2021 11:47:20 AM

Debt Details
Governmental Funds/ Activities

Debt Category	Debt Issue Date (MM/YYYY)	Principal Amounts Only				Current Portion Due Within One Year (Principal and Interest)	Interest Paid During Fiscal Year
		Debt at Beginning of Fiscal Year	Additions	Reductions / Repayments	Debt at End of Fiscal Year		
General Obligation Bonds/Notes – CIB	08/2020		9,995,000.00	1,055,000.00	8,940,000.00	1,643,207.50	147,686.28
General Obligation Bonds/Notes – CIB	07/2020		9,995,000.00	280,000.00	9,715,000.00	469,575.00	192,443.94
General Obligation Bonds/Notes – CIB	08/2019	9,075,000.00		5,000.00	9,070,000.00	350,558.75	345,620.00
General Obligation Bonds/Notes – CIB	08/2019	7,170,000.00		535,000.00	6,635,000.00	1,078,700.00	239,025.00
General Obligation Bonds/Notes – CIB	05/2017	9,515,000.00		5,000.00	9,510,000.00	382,907.50	377,992.50
General Obligation Bonds/Notes – CIB	12/2016	4,440,000.00		40,000.00	4,400,000.00	202,037.50	157,787.50
General Obligation Bonds/Notes – CIB	12/2016	5,335,000.00		15,000.00	5,320,000.00	173,700.00	158,921.25
General Obligation Bonds/Notes – CIB	08/2015	7,480,000.00		7,480,000.00		70,000.00	107,267.50
General Obligation Bonds/Notes – CIB	06/2015	8,530,000.00		8,530,000.00		65,000.00	51,144.61
General Obligation Bonds/Notes – CIB	03/2012	4,790,000.00		4,790,000.00		4,950.00	51,980.00
Compensated Absences		1,497,889.00	131,773.00	82,175.00	1,547,487.00		
Other Post-Employment Benefits (OPEB)		4,826,000.00	329,000.00	219,000.00	4,936,000.00		
Net Pension Liability		91,975,000.00	6,084,000.00		98,059,000.00		
Totals for Debt Entered:		\$154,633,889.00	\$26,534,773.00	\$23,036,175.00	\$158,132,487.00	\$4,440,636.25	\$1,829,868.58

Bond Details
Proprietary Funds

Debt Category	Debt Issue Date (MM/YYYY)	Principal Amounts Only				Current Portion Due Within One Year (Principal and Interest)	Interest Paid During Fiscal Year
		Debt at Beginning of Fiscal Year	Additions	Reductions / Repayments	Debt at End of Fiscal Year		
Other Post-Employment Benefits (OPEB)		90,000.00	2,000.00		92,000.00		
Net Pension Liability		920,000.00	61,000.00		981,000.00		
Totals for Debt Entered:		\$1,010,000.00	\$63,000.00		\$1,073,000.00		

LEA : 113362403 Elizabethtown Area SD

Printed 11/23/2021 11:47:25 AM

General Fund (10)

Section 1: Tuition/Purchased Services as Reported within Expenditure Detail	Amount
Tuition Reported in General Fund Expenditures 1000-560	4,329,588.09
Purchased Services in General Fund Expenditures 1000-594 and 1000-597	14,778.62
Section 1 Total	\$4,344,366.71

Section 2: Tuition Paid to Institution Types During Fiscal Year	Tuition Paid For Nonspecial Education	Tuition Paid For Special Education	Total
1 1306 Institutions			
2 Institutionalized Children's Programs	9,800.00		9,800.00
3 Juveniles Incarcerated in Adult Facilities			
4 Residential Treatment Facilities			
5 Other Local Education Agencies	28,652.95	224,890.36	253,543.31
6 Brick and Mortar Charter Schools			
7 Cyber Charter Schools	1,562,243.19	717,140.63	2,279,383.82
8 Career and Technology Centers	1,021,807.00		1,021,807.00
9 Approved Private Schools	138,796.50	528,430.45	667,226.95
10 PA Chartered Schools for the Deaf and Blind			
11 Private Residential Rehabilitative Institutions	1,857.19	13,891.76	15,748.95
12 Juvenile Detention Centers	50,526.61		50,526.61
13 Special Program Jointures			
14 Other Tuition Not Included Elsewhere In This Section	31,551.45	14,778.62	46,330.07
Section 2 Total	\$2,845,234.89	\$1,499,131.82	\$4,344,366.71

LEA : 113362403 Elizabethtown Area SD

Printed 11/23/2021 11:47:46 AM

Food Service / Cafeteria Operations Fund (51)

3000 Operation of Non-Instructional Services		<u>Total</u>
100 <u>Personnel Services – Salaries</u>		
100 Personnel Services – Salaries		193,871.00
Total Personnel Services – Salaries		\$193,871.00
200 <u>Personnel Services – Employee Benefits</u>		
220 Social Security Contributions		14,635.06
230 PSERS Retirement Contributions		44,297.00
Total Personnel Services – Employee Benefits		\$58,932.06
400 <u>Purchased Property Services</u>		
430 Repairs and Maintenance Services		9,806.57
Total Purchased Property Services		\$9,806.57
500 <u>Other Purchased Services</u>		
530 Communications		748.74
570 Food Service Management		669,878.00
580 Travel		316.72
Total Other Purchased Services		\$670,943.46
600 <u>Supplies</u>		
610 General Supplies		5,645.34
630 Food		112,161.58
650 Supplies & Fees – Technology Related		12,218.17
Total Supplies		\$130,025.09
700 <u>Property</u>		
740 Depreciation		89.05
Total Property		\$89.05
800 <u>Other Objects</u>		
810 Dues and Fees		801.66
Total Other Objects		\$801.66
Total 3000 Operation of Non-Instructional Services		\$1,064,468.89

LEA : 113362403 Elizabethtown Area SD

Printed 11/23/2021 11:47:46 AM

Food Service / Cafeteria Operations Fund (51)

3100 Food Services	<u>Elementary</u>	<u>Secondary</u>	<u>Federal</u>	<u>Total</u>
100 <u>Personnel Services – Salaries</u>				
100 Personnel Services – Salaries				193,871.00
Total Personnel Services – Salaries				\$193,871.00
200 <u>Personnel Services – Employee Benefits</u>				
220 Social Security Contributions				14,635.06
230 PSERS Retirement Contributions				44,297.00
Total Personnel Services – Employee Benefits				\$58,932.06
400 <u>Purchased Property Services</u>				
430 Repairs and Maintenance Services				9,806.57
Total Purchased Property Services				\$9,806.57
500 <u>Other Purchased Services</u>				
530 Communications				748.74
570 Food Service Management				669,878.00
580 Travel				316.72
Total Other Purchased Services				\$670,943.46
600 <u>Supplies</u>				
610 General Supplies				5,645.34
630 Food				112,161.58
650 Supplies & Fees – Technology Related				12,218.17
Total Supplies				\$130,025.09
700 <u>Property</u>				
740 Depreciation				89.05
Total Property				\$89.05
800 <u>Other Objects</u>				
810 Dues and Fees				801.66
Total Other Objects				\$801.66
Total 3100 Food Services				\$1,064,468.89

LEA : 113362403 Elizabethtown Area SD

Printed 11/23/2021 11:47:37 AM

Internal Service Fund (60)

2000 Support Services

Total

200 Personnel Services – Employee Benefits

270 Group Insurance – Self-Insurance	5,652,120.19
292 Health Savings Accounts	645,567.81

Total Personnel Services – Employee Benefits	\$6,297,688.00
---	-----------------------

800 Other Objects

810 Dues and Fees	517,021.00
-------------------	------------

Total Other Objects	\$517,021.00
----------------------------	---------------------

Total 2000 Support Services	\$6,814,709.00
------------------------------------	-----------------------

Total

Total

Total

5,652,120.19

645,567.81

\$6,297,688.00

Total

517,021.00

\$517,021.00

\$6,814,709.00

LEA : 113362403 Elizabethtown Area SD

Printed 11/23/2021 11:47:37 AM

Internal Service Fund (60)

2390 Other Administration Services	<u>Elementary</u>	<u>Secondary</u>	<u>Federal</u>	<u>Total</u>
200 <u>Personnel Services – Employee Benefits</u>				
270 Group Insurance – Self-Insurance				5,652,120.19
292 Health Savings Accounts				645,567.81
Total Personnel Services – Employee Benefits				\$6,297,688.00
800 <u>Other Objects</u>				
810 Dues and Fees				517,021.00
Total Other Objects				\$517,021.00
Total 2390 Other Administration Services				\$6,814,709.00

	<u>Food Service(51)</u>	<u>Child Care Operations(52)</u>	<u>Other Enterprise(58)</u>	<u>Internal Service(60)</u>	<u>Total</u>
2000 <u>Support Services</u>					
2300 Support Services - Administration				6,814,709.00	6,814,709.00
Total Support Services				\$6,814,709.00	\$6,814,709.00
3000 <u>Operation of Non-Instructional Services</u>					
3100 Food Services	1,064,468.89				1,064,468.89
Total Operation of Non-Instructional Services	\$1,064,468.89				\$1,064,468.89
TOTAL ACTUAL EXPENDITURES & OTHER FINANCING USES	\$1,064,468.89			\$6,814,709.00	\$7,879,177.89

LEA : 113362403 Elizabethtown Area SD

Printed 11/23/2021 11:48:07 AM

Fund	School	School Number	Local Personnel	Local Nonpersonnel	State Personnel	State Nonpersonnel	Federal Personnel	Federal Nonpersonnel	Total	Explanation
10										
	Bainbridge El Sch	2555	1,826,710.42	374,145.51	821,529.12	168,265.00	66,155.34	13,549.89	3,270,355.28	
	Bear Creek School	8190	7,483,881.48	1,532,843.19	3,365,736.83	689,367.78	271,032.97	55,512.78	13,398,375.03	
	East High Street El Sch	2561	3,202,779.10	655,990.90	1,440,390.47	295,019.73	115,990.44	23,757.08	5,733,927.72	
	Elizabethtown Area MS	6862	5,254,811.21	1,076,286.63	2,363,253.84	484,039.94	190,305.94	38,978.32	9,407,675.88	
	Elizabethtown Area SHS	2562	10,067,027.79	2,061,921.35	4,527,458.95	927,310.87	364,583.06	74,673.64	18,022,975.66	
	Mill Road El Sch	2558	1,625,530.83	332,940.05	731,052.33	149,733.61	58,869.51	12,057.61	2,910,183.94	
	Rheems El Sch	2559	1,778,427.37	364,256.21	799,814.71	163,817.47	64,406.75	13,191.74	3,183,914.25	
Total			31,239,168.20	6,398,383.84	14,049,236.25	2,877,554.40	1,131,344.01	231,721.06	55,927,407.76	