

Trinity Area School District

Middle School Additions and Alterations



Construction Update
August 8, 2023

Intermediate Addition



Prep for Slab on Grade at Intermediate Addition



Gym at Intermediate Addition



Stairs in Connector at Area G and Intermediate Addition



MEP Rough In – Area K – 3rd Floor at Intermediate Addition



MEP Rough In – Area K – 2nd Floor at Intermediate Addition



Metal Panels at Athletic Addition



Indoor Field at Athletic Addition



Weight Room at Athletic Addition



Restrooms at Athletic Addition



Floor Installation at MS Gym



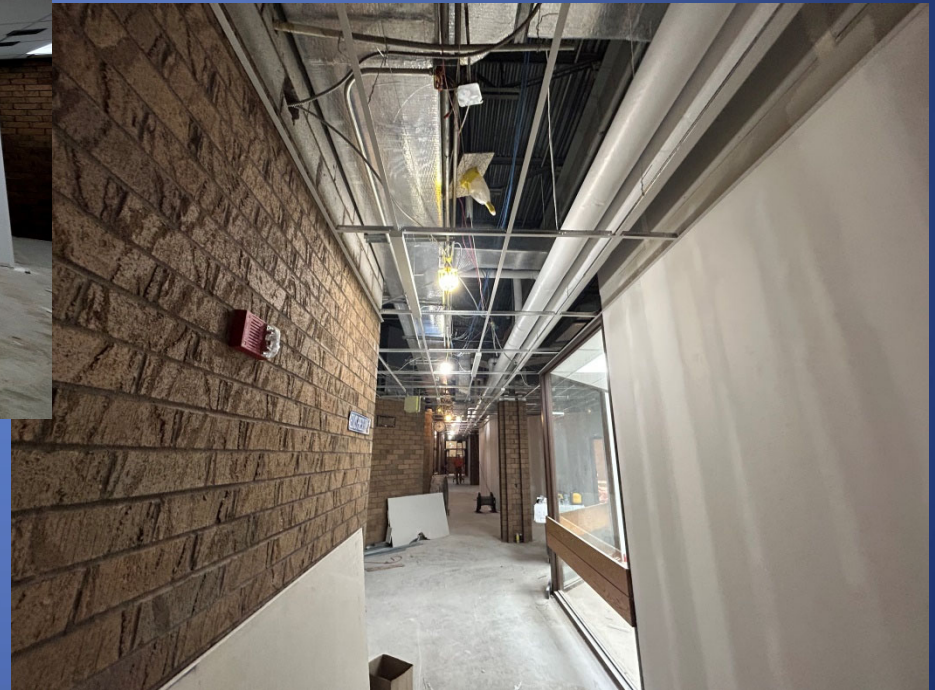
Music Area Classrooms



Music Area Storage Rooms



Music Area Storage Room & Corridor



Music Area – Band Room



Video Display Installed at Media Center



Cafeteria



Ceiling Grid Wall Tile at Life Skills Restrooms



Ceiling Grid - Entrance at Life Skills



Retention Tank Installation



New Maintenance Area Entrance



New Maintenance Area Entrance



Patio at Life Skills



Sidewalks



Parking Lot at Athletic Addition



Grass at Retention Ponds at Athletic Addition



Access Road and Parking Lot at Athletic Addition



Overall Site



Overall Progress

Upcoming Work

- Complete Slab on Grade at Intermediate Addition
- MEP Rough Ins at Intermediate Addition
- Continue CFMF Exterior of Intermediate Addition
- Complete Metal Panel Install at Athletic Addition
- Translucent Panels at Athletic Addition
- Plumbing Fixtures, Partitions and Accessories at Athletic Addition Restrooms
- Light Fixtures at Athletic Addition
- Netting & Turf at Athletic Addition
- Finish Gym Floor
- Install Gym Equipment, Wall Pads & Scoreboard in MS Gym
- Complete Drywall, Paint, Ceilings and Flooring in Music Area
- Complete Tiling at Life Skills Restrooms
- Plumbing Fixtures, Partitions and Accessories at Life Skills Restrooms
- Complete Area G Flooring
- Complete Phase 7 Sitework

Project Stats

- Safety = 28 Days with Zero Recordable Accidents

Project Schedule

- Cafeteria, Life Skills Restrooms, and MS Gym are on schedule for completion by start of school
- Music Area and Athletic Addition are a week behind schedule for the start of school