

Scholarship Opportunities

at Prior Park College



Prior Park
College



SCHOLARSHIP OPPORTUNITIES AT PRIOR PARK COLLEGE

Prior Park offers a range of Scholarships for exceptionally talented and dedicated students in a number of areas.

Scholars are impressive students who contribute much to their specialist areas and to the life of the school, demonstrating exceptional commitment and dedication, whilst acting as role models for their peers.

We provide comprehensive programmes of enrichment, support and encouragement to help scholars make the very most of their talents and reach their full potential.



SCHOLARSHIPS

Prior Park College offer the following Scholarships at 11+, 13+ and 16+:

- Academic Scholarships
- Special Talent Scholarships

Special Talent Scholarships are available in Visual Arts, Drama, Design & Technology, Music and Sport.

Applicants can apply for up to two Special Talent Scholarships but can only hold one – if an applicant is offered both, they must decide which scholarship would best suit their needs and aspirations.

Students can hold an Academic Scholarship and one Special Talent Scholarship concurrently.

Any second award is honorary.

Scholarships will be reviewed throughout an award holder's time at the College and, whilst it is unusual for an award to be removed, a significant decline in commitment or behaviour by the student may result in the loss of the scholarship.

The continuation of the scholarship is also subject to a formal review:

- Academic Scholarships will be reviewed at 16+
- Special Talent Scholarships will be reviewed at 13+ and 16+.

VALUE OF SCHOLARSHIPS

Scholarships relate to both potential and attainment and are up to the value of 10% of prevailing tuition fees for the first scholarship or can be awarded in name only.

Any additional scholarship award is in name only.

Scholarships are awarded on merit and are independent of parental financial circumstances.

Should parents feel able to decline the monetary reward associated with a scholarship, the money so released will be used to help other talented students, via our bursary programme.

Means tested bursaries can be added to scholarships and subject to annual review.



The teachers really want us to improve every skill so we can perform to the best of our ability.

Prior Park College student

ACADEMIC SCHOLARSHIPS



SELECTION PROCESS

At 11+ no separate academic scholarship papers are set at point of entry. Awards are offered in response to a very strong or promising performance in our entrance tests and interviews.

At 13+ alongside sitting our entrance tests, students wishing to apply for an academic scholarship will be asked to sit broad papers in the humanities, sciences and a language of their choice. They will also have an interview to discuss their academic interests and aspirations for the future.

At 16+ students will nominate two subjects, which they plan to take at A Level, in which to sit entrance tests and have interviews with the relevant Heads of Department. Students will also meet with senior staff to discuss their academic interests and aspirations for the future.

INTERNAL ACADEMIC SCHOLARSHIPS

Pupils who are already at the College in F3 (Year 8) are able to request to be considered for an academic scholarship at 13+ if they joined the school after the 11+ scholarships are awarded.

Students at the College in U5 (Year 11) can request to be considered for a 16+ scholarship. All academic scholarships are reviewed at this stage to compare our internal and external candidates equally.

OPPORTUNITIES FOR ACADEMIC SCHOLARS

- Our inspiring 'Scholars' Lecture Series' brings scholars into contact with the wider world beyond the college gates. Breadth is the key here, with lectures being presented from a huge range of speakers. Just last year, for example, our scholars met with a world-leader in machine-learning research at the University of Bristol, a NASA astrophysicist, a serving Lieutenant colonel in the British Army and a noted International Master in chess. Many speakers come from the ranks of our own highly talented alumni.



- 11+ scholars meet with our Scholarship Coordinator each fortnight to discuss topics of interest, sharpen their analysis and challenge their ideas. Even at this age, scholars are encouraged to lead discussion and make presentations on their own interests, and many sessions are led by scholars in the Sixth Form.
- Our annual scholars' trip takes students out of the college to broaden their thinking. Last year saw scholars heading to Magdalen College, Oxford to explore life and work at the University, as well as touring the Natural History Museum, Pitt Rivers Museum and Ashmolean Museum.
- Our academic societies allow scholars to further broaden their interests:
 - The Socrates Club facilitates opportunities for scholars to learn new facts and consider different perspectives.
 - The Astronomical Society meets each week to explore the night sky and all matters relating to astronomy.
 - The Chess Club caters for our large number of players at all levels with a full programme of meetings and competitions and fixtures with other schools. Talks and special exhibition matches are also regularly arranged.
- Scholars also benefit from a huge amount of super-curricular provision within our academic departments. This can be internal, such as the House debating competition, Maths competitions and 'MFL Challenge', or external such as the University of Bath Masterclasses, Ciscero Competitions, National Olympiads in Physics, Chemistry, Maths and others, Catenians and Rotary Public Speaking.

EXPECTATIONS OF ACADEMIC SCHOLARS

- Academic scholars are expected to perform exceptionally in all subject areas and set the very best example to their peers.
- Students should see their scholarship as an honour and privilege. Any scholar not adopting the correct approach in terms of attitude to learning or efforts may find their scholarship under formal review.
- Attendance at some super-curricular academic events will be compulsory.
- There may be expectations for students to help with academic outreach events from time to time as well as acting as ambassadors for the school on Open Mornings and other marketing events.
- Students at 16+ should take the A Level subjects which they nominated for their scholarship exams and interview.

SPECIAL TALENT AWARDS

To be worthy of a creative award a candidate must show evidence of exceptional artistic talent and real enthusiasm for the subject.

DESIGN & TECHNOLOGY

SELECTION PROCESS

The process requires students to submit a portfolio of projects or drawings, carry out a drawing assessment based around a design challenge and undertake an interview with the Head of D&T.

- Portfolio requirements: The portfolio should contain photographs and drawings of projects made at home and at school. 3D outcomes that are transportable would also be beneficial. The portfolio can be submitted electronically on a CD, USB or online. Images and videos can also be included. For 16+ applications students must supply evidence of GCSE coursework.
- Drawing Assessment: Students will undertake a 30min design task where they will be required to generate design ideas in relation to a design problem.
- The Interview: All scholarship candidates are required to discuss their portfolio and their interest in D&T.

At all entry levels, prior to the assessment, Prior Park must also receive a written report from the potential D&T scholar's present teacher or tutor on his or her talent, commitment and approach to the subject.

OPPORTUNITIES FOR DESIGN & TECHNOLOGY SCHOLARS

There is a regular programme of enrichment activities provided for D&T scholars, appropriate to their age and interests. The department has strong links with the local design industry and students benefit from bespoke workshops and trips.

EXPECTATIONS OF DESIGN & TECHNOLOGY SCHOLARS

To be a D&T scholar is a privilege for those demonstrating strong aptitude in the subject. They are selected on creative merit and the potential they have within the field of design. As a scholar they are expected to demonstrate these in and out of art lessons.

- At 11+ entry D&T scholars are expected to be involved on a weekly basis with one or more departmental activities and play a leading role in promoting the activity and subject within their peer group.
- The above is similar for 13+ entry but in addition and central to this work, the successful scholar will opt to study D&T as part of their Form 4 options and he or she will be expected to take D&T at GCSE.
- At 16+ entry a scholar is expected to take D&T at A Level. There is also an expectation that he or she supports the subject by helping with any extra-curricular activity projects run by the department.

VISUAL ARTS

SELECTION PROCESS

Scholarship candidates are assessed through submission of a portfolio of artwork, a drawing assessment and an interview.

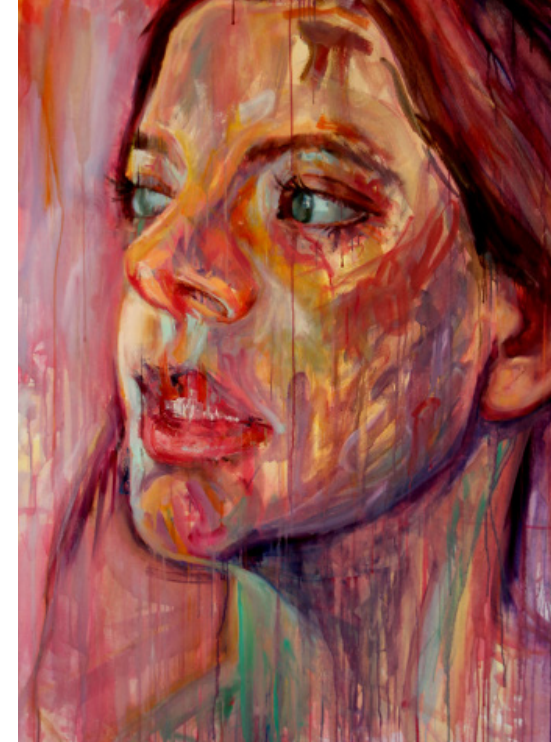
- Portfolio requirements: portfolio should contain no more than six pieces of work. At least half of these should have been completed independently rather than within the context of a school project. One of the six pieces may be a sketchbook of drawings and studies completed at home and/or at school.
- The drawing assessment involves an observational drawing exercise and an expressive/design exercise.
- In an informal interview, candidates will be asked to discuss their own work and their interest in art.

OPPORTUNITIES FOR VISUAL ART SCHOLARS

- There is a regular programme of enrichment activities provided for visual art scholars, appropriate to their age and interests. The visual art department has a link with the Holburne Museum and students benefit from bespoke workshops.
- Scholars at 13+ and 16+ are given the opportunity to develop their leadership skills through helping to organise events within the Art Society.
- In addition, the Art Society offers further opportunities for involvement in all areas of the visual arts including photography, visiting artists' lectures, films and competitions.

EXPECTATIONS OF VISUAL ART SCHOLARS

- The award of an art scholarship is a privilege for those demonstrating strong aptitude in the subject. Visual art scholars are selected on artistic merit and potential and they are expected to demonstrate these in and out of art lessons. Regular attendance at visual art scholars' events and an active role in the College Art Society is expected.
- 13+ visual art scholars are expected to take GCSE art or textile design.
- 16+ visual art scholars are expected to take A Level art, textile design or photography.





DRAMA

To receive an award a candidate must show evidence of exceptional drama ability.

SELECTION PROCESS

External scholarships are assessed through:

- A workshop with other drama students.
- A presentation of portfolio showing evidence of previous experience.
- An audition consisting of a monologue, which must be from a full length, professionally performed play and not a poem, reading or song. At 11+ the monologue can be provided by the College or chosen by the candidate. At 13+ and 16+ the monologue can be chosen by the candidate.
- A brief interview.

An additional report from the candidate's drama teacher, in support of an application, would be most helpful.

OPPORTUNITIES FOR DRAMA SCHOLARS

- Drama scholar trips to the theatre.
- Visiting practitioner workshops.
- Involvement in the drama scholars Showcase.
- Assistance with auditions for drama schools and professional guidance on making a career in the performing arts.

EXPECTATIONS OF DRAMA SCHOLARS

- Play an active role within the department and assist with Front of House duties, audition for school productions and generally be a student we can rely on.
- 13+ drama scholars are expected to take GCSE drama.
- 16+ drama scholars are expected to take A Level drama.



MUSIC

The award of a music scholarship is for those students demonstrating strong talent and dedication in the subject.

SELECTION PROCESS

Scholarship candidates are assessed through formal audition and interview, often following an earlier informal first meeting.

- At the audition candidates are expected to perform two or more contrasting solos on their main instrument, to take sight reading and aural tests (these involve some basic singing) and to have a short informal interview in which their musical interests and ambitions may be discussed. If additional instruments are offered for assessment, one piece is required on each. As a general rule the standard for 11+ is Grade 4 or above, 13+ is Grade 5 or above and 16+ is Grade 7 or above, but every case is unique and individuals are judged on their musical talent, potential and commitment.
- All scholarship applications should be accompanied by full reports from the candidate's music or instrumental teachers.

OPPORTUNITIES FOR MUSIC SCHOLARS

- There is a regular programme of musical activities and musical events in which scholars take a leading role.
- Thanks to the excellent connections enjoyed by the College music staff, enhanced performing and tuition opportunities exist for scholars, including consultation lessons with leading teachers at conservatoires and universities.

- Performing opportunities are offered to music scholars with high-level local and national ensembles.
- In addition, the department offers further opportunities for involvement in all areas of music including concert going, visiting artists' workshops, masterclasses and competitions.
- The music scholars stage an annual concert, as well as performing regularly in other concerts both in school and beyond.

EXPECTATIONS OF MUSIC SCHOLARS

- Music scholars are expected to show dedication to their musical studies in and out of music lessons, in school and beyond.
- Music scholars are expected to give high priority to music, in the event that other activities conflict with music commitments.
- Regular attendance at College ensembles, as required by music staff, and an active role in College music making is expected, whether as soloist, ensemble player or audience supporter. Scholars at 13+ and 16+ are given the opportunity to develop their leadership skills through helping to organise events and ensembles.
- 13+ music scholars are likely to take GCSE music but this is not compulsory; 16+ music scholars are likely to take A Level music or music technology but this is not compulsory.

SPORT

Sports Scholarships will be limited to a combination of Rugby Union, Hockey, Tennis or Cricket for boys and Hockey, Netball or Tennis for girls, though account will be taken for excellence in other areas.



SELECTION PROCESS

- 11+ applicants should demonstrate all round sporting ability and potential in the major sports.
- 13+ or 16+ applicants should demonstrate exceptional all-round sporting ability and proficiency in at least two of the major sports, these include a representational honour (for example; county, regional, academy or equivalent) in at least one of these sports.

Sports scholars are requested to be present for an assessment that will include:

- Speed, agility, co-ordination and fitness
- Team building
- Playing ability in the main team sports

Each candidate will have an interview with the relevant Head of Sport.



OPPORTUNITIES FOR SCHOLARS

Sports scholars will have a personal training programme written specifically for them to follow.

A programme of lectures by guest speakers runs throughout the year, on a wide variety of topics that are aimed to inspire or educate the students.

EXPECTATIONS OF SCHOLARS

A scholarship athlete is an 'Ambassador for Prior Park College Sport'.

Sports scholars should be seen as positive role models and take all opportunities on offer to further develop their sporting prowess both in and out of school.

Scholars are expected to attend a weekly strength and conditioning session throughout the year.

There is an expectation for all award holders to be fully committed to school teams throughout the year.

Sports scholars do not have to take GCSE PE or A Level PE.

HOW DO I APPLY FOR AN AWARD – SCHOLARSHIP APPLICATION PROCESS

All scholarship applicants should be registered with the College and will have paid the £125 registration fee. There is no additional fee for applying for a Scholarship.

A relevant Scholarship Application Form should be completed and received by the Admissions department by the advertised closing date.

Additional supporting reports from the Head or teacher of the applicant's current school, and outside coaches or teachers are also required and should be sent to the Admissions department with the Scholarship Application Form.

The selection criteria for each scholarship are set out in this document.

All candidates must sit the Entrance Examination. Academic Scholarships will be based upon a very strong or promising performance in our entrance tests and interviews.

Special Talent Scholarship candidates will be invited to an Assessment Day, requirements of which are outlined in this document.

Applicants for Special Talent Scholarships must meet the normal academic entry requirements.

The number of scholarships made in each category depends on the quality of the candidates.

The Head's decision on all awards is final.

Scholarships will be reviewed throughout an award holder's time at the College and, whilst it is unusual for an award to be removed, a significant decline in commitment or performance by the student may result in the loss of the scholarships.

The continuation of the scholarship is also subject to a formal review:

- Academic Scholarships will be reviewed at 16+
- Special Talent Scholarships will be reviewed at 13+ and 16+.

For further details on our Admissions policy and to download Special Talent Scholarship application forms, please visit our website: priorparkcollege.com/admissions



BURSARIES

Means tested bursaries may be awarded to families who seek a Prior Park education but whose entry is potentially restricted by financial circumstances.

Families who may require bursarial support are asked to contact the Financial Controller to discuss this matter well in advance of the entrance assessments.

To apply for a bursary, you must be registered with the College and have paid the £125 registration fee.

Bursary Application Forms must be returned to the Finance Department by the closing date for registrations.

A bursary can be added to a scholarship.

All bursaries are subject to annual financial assessment and may be referred to our external partner. Whilst it is unusual for an award to be removed, a significant decline in commitment or performance by the student may result in the loss of the award as will the change in a family's personal circumstances.

It is a condition of a bursary award that parents report any significant improvement in their financial situation.

For further details or to discuss an individual situation, please contact the Financial Controller on +44 (0) 1225 835 353



Prior Park College

Ralph Allen Drive, Bath BA2 5AH

Tel: +44 (0)1225 835 353, Email: office.ppc@priorparkschools.com

priorparkcollege.com

Information given in this document is believed to be correct at the time of printing (September 2023).
This, however, does not form part of any agreement between the College and current or prospective parents.
Those requiring information on specific matters should seek written confirmation from the College.