

Ideas for Assessing English Language Learners (ELLs)

Provide short, simple choices

Level 1-2: Provide two choices

Level 3-4: Provide three choices

Level 2 Example: Circle the correct word in each sentence

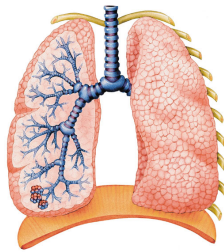
1. Central High School is in Little Rock (Arkansas, Mississippi, Georgia).
2. When Melba visited (Baltimore, Chicago, Cincinnati), she was amazed at how different it was from the South and wanted to move there.
3. Melba's mother is a (nurse, housecleaner, teacher).

Provide pictures whenever possible:

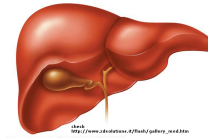
Directions: Name the following transplantable organs. (2 points each)



7. _____



8. _____



9. _____

Bonus: Answer the following. (1 point per answer)

List 2 other transplantable organs (i.e. not any of the three given in #7-9).

- a.
- b.

For Multiple choice, provide short descriptions in the left column and the answers in the right column:

- | | |
|---|------------------|
| __1. Romeo's father | A. Lord Capulet |
| __2. Juliet's confidant [person she can trust] | B. Lord Montague |
| __3. may have started the recent feuding [fighting] | C. Lady Capulet |
| __4. Juliet's hot-tempered cousin | D. the Nurse |
| __5. She's trying to marry Juliet off | E. Tybalt |

*Simplify language as much as possible, but also add descriptions of terms that may be unfamiliar to ELLs in brackets. Ex: confidant, feuding

Chunk Multiple Choice in groups of five. Do not add extra answers.

Combine a language objective (ex: write complete sentences) with the content

Example: Here's an alternative to multiple choice questions that use words like NOT, or EXCEPT that confuse ELLs

One word in the group below does not belong. Find the word and **cross it out**. Then **write a sentence** that tells how the other words are alike.

20-22. Filtration, Distillation, ~~Radiation~~, Crystallization, Sublimation

_____ These are all methods that are used to separate a mixture.

To extend further: Choose one word from the list and write a **complete sentence explaining** the word. **Draw** an illustration to go with your sentence.

Allow students to choose from among many options, use open notebooks for portions of the test, and tell how vocabulary words are related to a story, theme, concept or historical event.

Example:

Using the book and/or the study guide, identify or define **TWO** of the following and write how each is related to the Little Rock Nine.

NAACP

Definition:

How is it related to the Little Rock Nine?

Brown v. Board of Education

Identify and provide the date:

How is it related to the Little Rock Nine?

President Dwight Eisenhower

Identify:

How is he related to the Little Rock Nine?

Federalism

Define:

How is it related to the Little Rock Nine?

Provide a word bank and have students fill in a cloze summary. Put definitions in parentheses in the summary.

Use the wordbank below to fill in the blanks

add	evaluate	postulate	subtract
congruent	midpoint	substitute	

Find the length of VM



$VM = MW$ $4x-1 = 3x+3$ $x-1 = 3$ $x = 4$ $VM = 4x-1$ $= 4(4) - 1 = 15$ <p>So the length of VM is 15.</p>

In order to solve this problem, use the segment addition _____ (word that is similar to theorem). Point M is the _____ of VW.

This means point M divides the segment into two _____ (same size or measure) segments.

First write the equation $VM=MW$, then _____ the equation for each line segment.

Next, _____ $3X$ from each side, then _____ 1 to each side.

Finally, _____ the expression for VM when $x=4$. The length of VM is 15.

Answers: postulate, midpoint, congruent, substitute, subtract, add, evaluate

Provide students with study guides for tests and final exams. Depending on their proficiency level, ELLs may need the teacher key for these or an outline where they must complete key words.

Final Exams

-Use these suggestions to create an exam that matches the student's proficiency level.

Ask the ESL teacher to preview the test before you administer it.

-Reduce questions to assessing the essential concepts of the course

-No more than 50 multiple choice questions. Separate sections of multiple choice with other activities, such as matching or true false.

-If you require an essay on the final, allow the student to write the essay the week before, so the student can spend time on the other parts of the test the day of the test

-Avoid multiple choice questions that use 'not' or 'except'. If you do use these terms, put them in bold, all caps and underline. **NOT, EXCEPT**

Other Suggestions for the Classroom:

Listening: Provide opportunities for students to listen to other students explain their strategies and thinking.

Speaking: Allow students to verbalize their thinking one-on-one to other students or to the teacher, rather than always in front of the large group.

Differentiate homework assignments: Reduce the amount of language and detail, assign language-based math problems that have simple, straightforward language

Feature films in class: Allow the ELL to watch the film first to build background knowledge, then read the story.