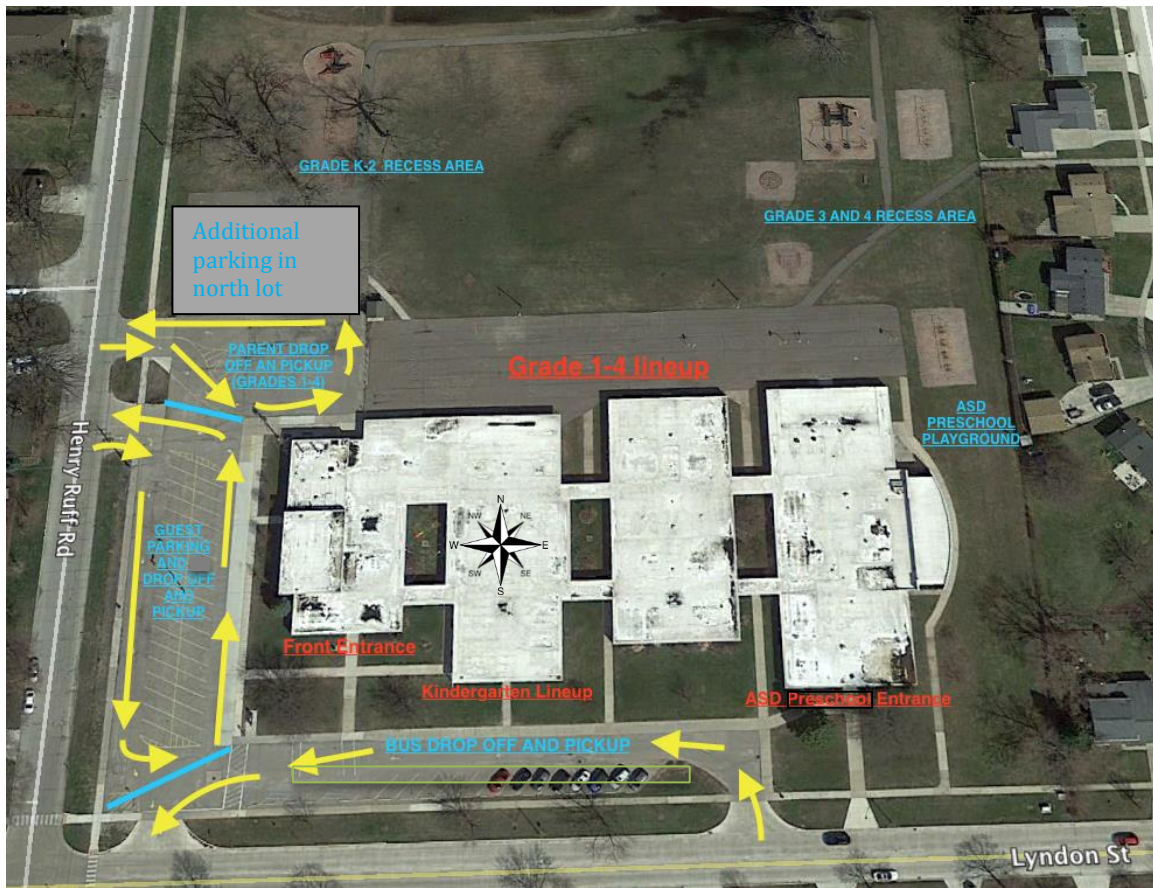


ROOSEVELT ELEMENTARY SCHOOL



TRAFFIC FLOW PROCEDURES AND ARRIVAL/DISMISSAL LOCATIONS

BUS DROP OFF AND PICKUP

This area is for general education and ASD preschool buses only. *Parking for guests available on the West parking lot.*

PARENT DROP OFF/PICKUP and GUEST PARKING

These areas are for parents/guardians to use to drop off their child and pick them up or to park their car. Please enter one of the two loops off of Henry Ruff. The exit on Lyndon is for bus traffic only during arrival and dismissal times.

Thank you for following our drop off and pick up procedures. Parking is limited at certain peak times. During arrival and dismissal times, please take extra caution to drive safe and take your time. Your child's safety is our top priority!

This map is subject to change based on safety needs.

OFFICE HOURS

8:00 a.m. - 4:30 p.m.

STUDENT DAY (K-4 STUDENTS)

Arrival begins at 8:45 a.m.

8:54 a.m. - 3:59 p.m.

ASD KINDERGARTEN

8:25 a.m.-3:30 p.m.

LUNCH

12:10 p.m.-1:00 p.m.

ASD and K LUNCH from 12:35-1:25

1/2 DAY

8:54 a.m.-12:10 p.m.

STUDENT DAY (ASD PRESCHOOL STUDENTS)

8:30 a.m.-11:30 a.m.

OR

12:30 p.m.-3:30 p.m.

Families from the Autism Spectrum Disorder (ASD) program will receive notification of their child's session.

South Front of Building

Bus Loop

(No Cars)



West side drop off/pick up loop

and Parking



North side drop off/pick up loop Parking and grade 1-4 lineup

