



EMPLOYEE HANDBOOK

2022-2023

Table of Contents

| | |
|---|-----------|
| Introduction | 5 |
| District Information | 5 |
| Description of the District | 5 |
| Mission Statement, Goals, and Objectives | 5 |
| Board of Trustees..... | 5 |
| Board Meeting Schedule | 6 |
| School Calendar..... | 7 |
| Helpful Contacts | 8 |
| District Directory | 8 |
| Organizational Chart..... | 9 |
| Employment | 10 |
| Equal Employment Opportunity..... | 10 |
| Job Vacancy Announcements..... | 10 |
| Employment After Retirement | 10 |
| Contract and Noncontract Employment | 11 |
| Certification and Licenses | 11 |
| Searches and Alcohol and Drug Testing | 12 |
| Health Safety Training..... | 12 |
| Reassignments and Transfers | 13 |
| Workload and Work Schedules | 13 |
| Breaks for Expressing of Breast Milk..... | 14 |
| Notification to Parents Regarding Qualifications..... | 14 |
| Outside Employment and Tutoring | 14 |
| Performance Evaluation | 15 |
| Employee Involvement..... | 15 |
| Staff Development..... | 15 |
| Professional Development Non-Attendance | 15 |
| Compensation and Benefits | 16 |
| Salaries, Wages, and Stipends | 16 |
| Paychecks | 16 |
| Automatic Payroll Deposit | 16 |
| Payroll Deductions | 17 |
| Overtime Compensation | 17 |
| Travel Expense Reimbursement..... | 17 |
| Health, Dental, and Life Insurance | 18 |
| Supplemental Insurance Benefits | 18 |
| Cafeteria Plan Benefits (Section 125) | 18 |
| Workers' Compensation Insurance | 19 |
| Unemployment Compensation Insurance..... | 19 |
| Teacher Retirement..... | 19 |
| Other Benefit Programs | 19 |
| Leaves and Absences | 20 |
| Personal Leave..... | 21 |

| | |
|--|-----------|
| State Sick Leave | 22 |
| Local Leave | 22 |
| Family and Medical Leave Act (FMLA)—General Provisions | 22 |
| Local Family and Medical Leave Provisions | 24 |
| Temporary Disability Leave..... | 25 |
| Workers’ Compensation Benefits..... | 26 |
| Assault Leave | 26 |
| Bereavement Leave | 26 |
| Jury Duty | 27 |
| Compliance with a Subpoena | 27 |
| Military Leave | 27 |
| Employee Relations and Communications | 27 |
| Employee Recognition and Appreciation..... | 28 |
| District Communications | 28 |
| Complaints and Grievances..... | 28 |
| Employee Conduct and Welfare | 28 |
| Standards of Conduct..... | 28 |
| Discrimination, Harassment, and Retaliation | 31 |
| Harassment of Students..... | 32 |
| Reporting Suspected Child Abuse..... | 31 |
| Sexual Abuse and Maltreatment of Children | 33 |
| Reporting Crime | 33 |
| Technology Resources..... | 34 |
| Personal Use of Electronic Media | 34 |
| Electronic Communication Between Employees and Students | 35 |
| Public Information on Private Devices..... | 37 |
| Criminal History Background Checks..... | 37 |
| Employee Arrests and Convictions | 38 |
| Alcohol and Drug-Abuse Prevention | 38 |
| Tobacco Products and E-Cigarette Use | 39 |
| Fraud and Financial Impropriety | 39 |
| Conflict of Interest..... | 39 |
| Gifts and Favors..... | 40 |
| Copyrighted Materials | 40 |
| Associations and Political Activities | 40 |
| Charitable Contributions..... | 40 |
| Safety | 41 |
| Possession of Firearms and Weapons..... | 41 |
| Visitors in the Workplace | 41 |
| Asbestos Management Plan..... | 42 |
| Pest Control Treatment..... | 42 |
| District Dress Code..... | 42 |
| General Procedures..... | 42 |
| Emergency School Closing..... | 42 |
| Emergencies..... | 43 |
| Purchasing Procedures..... | 43 |

| | |
|--|-----------|
| Name and Address Changes | 42 |
| Personnel Records | 43 |
| Building Use | 44 |
| Use of Personal Electronic Devices including Cellular Telephones by Staff..... | 44 |
| School Keys..... | 44 |
| Termination of Employment..... | 44 |
| Resignations..... | 44 |
| Dismissal or Nonrenewal of Contract Employees..... | 45 |
| Dismissal of Noncontract Employees..... | 45 |
| Exit Interviews and Procedures | 46 |
| Reports to Texas Education Agency..... | 46 |
| Reports Concerning Court-Ordered Withholding | 47 |
| Student Issues | 47 |
| Equal Educational Opportunities..... | 47 |
| Student Records | 48 |
| Parent and Student Complaints..... | 48 |
| Administering Medication to Students | 48 |
| Dietary Supplements..... | 49 |
| Psychotropic Drugs | 49 |
| Student Conduct and Discipline | 49 |
| Student Attendance..... | 49 |
| Bullying | 50 |
| Hazing..... | 50 |
| INDEX..... | 50 |
| Employee Handbook Receipt..... | 53 |

Introduction

The purpose of this handbook is to provide information that will help with questions and pave the way for a successful year. Not all district policies and procedures are included. Those that are have been summarized. Suggestions for additions and improvements to this handbook are welcome and may be sent to Human Resources.

This handbook is neither a contract nor a substitute for the official district policy manual. Nor is it intended to alter the at-will status of noncontract employees in any way. Rather, it is a guide to and a brief explanation of district policies and procedures related to employment. These policies and procedures can change at any time; these changes shall supersede any handbook provisions that are not compatible with the change. For more information, employees may refer to the policy codes that are associated with handbook topics, confer with their supervisor, or call the appropriate district office. District policies can be accessed online at www.lapryor.net

District Information

Description of the District

La Pryor Independent School District encompasses 307.77 square miles located in South Texas west of San Antonio in Zavala County. The district is one of 51 districts served by Region 20 Education Service Center in San Antonio.

Mission Statement, Goals, and Objectives

Policy AE

Vision Statement

Our students strive for excellence, channeling their efforts toward the greater good of the community and society in which they live. These values are instilled and reinforced through collaborative partnerships between the home, school, and community. This environment for success is furthered by a quality curriculum delivered by exceptional educators. Our school district and the communities it serves are committed to high expectations and high standards.

Mission Statement

It is the mission of the District to provide all students with the opportunity to develop academically, vocationally, and socially by providing quality educational programs that allow our students to succeed.

Board of Trustees

Policies BA, BB series, BD series, and BE series

Texas law grants the board of trustees the power to govern and oversee the management of the district's schools. The board is the policy-making body within the district and has overall responsibility for the curriculum, school taxes, annual budget, and employment of the Superintendent. The board has complete and final control over school matters within limits established by state and federal laws and

regulations.

The board of trustees is elected by the citizens of the district to represent the community's commitment to a strong educational program for the district's children. Board members are elected "at large" and serve 4 year terms. Board members serve without compensation, must be qualified voters, and must reside in the district.

BOARD OF TRUSTEES

| MEMBER | TERM EXPIRES |
|---------------------------------|---------------------|
| Eloy Vera Sr., President | 2024 |
| Ernesto Salazar, Vice President | 2022 |
| Aurora Nájera, Secretary | 2024 |
| Eric Dube, Member | 2024 |
| Alejandro Perez, Member | 2024 |
| Jose Luis E. Ramirez, Member | 2022 |
| Marcel Valdez, Member | 2022 |

The board generally meets at 6:30 p.m. on the fourth Wednesday of each month at the multi-purpose building in La Pryor, TX. Special meetings may be called when necessary. A written notice of regular and special meetings will be posted at the central administration building at least 72 hours before the scheduled meeting time. The written notice will show the date, time, place, and subjects of each meeting. In emergencies, a meeting may be held with a one-hour notice.

All meetings are open to the public. In certain circumstances, Texas law permits the board to go into a closed session from which the public and others are excluded. Closed sessions may occur for such things as discussing prospective gifts or donations, real-property acquisition, certain personnel matters including employee complaints, security matters, student discipline, or consulting with attorneys regarding pending litigation.

Board Meeting Schedule for 2022-2023

| | | | |
|-------------|----------------|---------------|------------|
| June 22nd | September 21st | December 14th | March 22nd |
| July 27th | October 27th | January 25th | April 26th |
| August 24th | November 16th | February 22nd | May 24th |

School Calendar

All employees will be furnished a copy of the school calendar at the beginning of the year and a copy is located on the District website www.lapryor.net

La Pryor Independent School District
2022-2023
School Year Calendar

July 22

| | | | | | | |
|----|----|----|----|----|----|----|
| Su | M | Tu | W | Th | F | Sa |
| | | | | | 1 | 2 |
| 3 | 4 | 5 | 6 | 7 | 8 | 9 |
| 10 | 11 | 12 | 13 | 14 | 15 | 16 |
| 17 | 18 | 19 | 20 | 21 | 22 | 23 |
| 24 | 25 | 26 | 27 | 28 | 29 | 30 |
| 31 | | | | | | |

August 22

| | | | | | | |
|----|----|----|----|----|----|----|
| Su | M | Tu | W | Th | F | Sa |
| | | 2 | 3 | 4 | 5 | 6 |
| 7 | 8 | 9 | 10 | 11 | 12 | 13 |
| 14 | 15 | 16 | 17 | 18 | 19 | 20 |
| 21 | 22 | 23 | 24 | 25 | 26 | 27 |
| 28 | 29 | 30 | 31 | | | |

1st Grading Cycle Aug. 10 - Sep. 16 = 27 Days
 2nd Grading Cycle Sep. 19 - Oct. 29 = 29 Days
 3rd Grading Cycle Oct. 31 - Dec. 17 = 30 Days
 4th Grading Cycle Jan. 10 - Feb. 17 = 29 Days
 5th Grading Cycle Feb. 21 - April 6 = 28 Days
 6th Grading Cycle April 11 - May 25 = 33 Days
Totals 176 Days or 78,906 Minutes

September 22

| | | | | | | |
|----|----|----|----|----|----|----|
| Su | M | Tu | W | Th | F | Sa |
| | | | | 1 | 2 | 3 |
| 4 | 5 | 6 | 7 | 8 | 9 | 10 |
| 11 | 12 | 13 | 14 | 15 | 16 | 17 |
| 18 | 19 | 20 | 21 | 22 | 23 | 24 |
| 25 | 26 | 27 | 28 | 29 | 30 | |

October 22

| | | | | | | |
|----|----|----|----|----|----|----|
| Su | M | Tu | W | Th | F | Sa |
| | | | | | | 1 |
| 2 | 3 | 4 | 5 | 6 | 7 | 8 |
| 9 | 10 | 11 | 12 | 13 | 14 | 15 |
| 16 | 17 | 18 | 19 | 20 | 21 | 22 |
| 23 | 24 | 25 | 26 | 27 | 28 | 29 |
| 30 | 31 | | | | | |

November 22

| | | | | | | |
|----|----|----|----|----|----|----|
| Su | M | Tu | W | Th | F | Sa |
| | | | | 1 | 2 | 3 |
| 4 | 5 | 6 | 7 | 8 | 9 | 10 |
| 11 | 12 | 13 | 14 | 15 | 16 | 17 |
| 18 | 19 | 20 | 21 | 22 | 23 | 24 |
| 25 | 26 | 27 | 28 | 29 | 30 | |

December 22

| | | | | | | |
|----|----|----|----|----|----|----|
| Su | M | Tu | W | Th | F | Sa |
| | | | | | 1 | 2 |
| 3 | 4 | 5 | 6 | 7 | 8 | 9 |
| 10 | 11 | 12 | 13 | 14 | 15 | 16 |
| 17 | 18 | 19 | 20 | 21 | 22 | 23 |
| 24 | 25 | 26 | 27 | 28 | 29 | 30 |
| 31 | | | | | | |

January 23

| | | | | | | |
|----|----|----|----|----|----|----|
| Su | M | Tu | W | Th | F | Sa |
| 1 | 2 | 3 | 4 | 5 | 6 | 7 |
| 8 | 9 | 10 | 11 | 12 | 13 | 14 |
| 15 | 16 | 17 | 18 | 19 | 20 | 21 |
| 22 | 23 | 24 | 25 | 26 | 27 | 28 |
| 29 | 30 | 31 | | | | |

February 23

| | | | | | | |
|----|----|----|----|----|----|----|
| Su | M | Tu | W | Th | F | Sa |
| | | | | 1 | 2 | 3 |
| 4 | 5 | 6 | 7 | 8 | 9 | 10 |
| 11 | 12 | 13 | 14 | 15 | 16 | 17 |
| 18 | 19 | 20 | 21 | 22 | 23 | 24 |
| 25 | 26 | 27 | 28 | | | |

March 23

| | | | | | | |
|----|----|----|----|----|----|----|
| Su | M | Tu | W | Th | F | Sa |
| | | | | 1 | 2 | 3 |
| 4 | 5 | 6 | 7 | 8 | 9 | 10 |
| 11 | 12 | 13 | 14 | 15 | 16 | 17 |
| 18 | 19 | 20 | 21 | 22 | 23 | 24 |
| 25 | 26 | 27 | 28 | 29 | 30 | 31 |

April 23

| | | | | | | |
|----|----|----|----|----|----|----|
| Su | M | Tu | W | Th | F | Sa |
| | | | | | | 1 |
| 2 | 3 | 4 | 5 | 6 | 7 | 8 |
| 9 | 10 | 11 | 12 | 13 | 14 | 15 |
| 16 | 17 | 18 | 19 | 20 | 21 | 22 |
| 23 | 24 | 25 | 26 | 27 | 28 | 29 |
| 30 | | | | | | |

May 23

| | | | | | | |
|----|----|----|----|----|----|----|
| Su | M | Tu | W | Th | F | Sa |
| 1 | 2 | 3 | 4 | 5 | 6 | |
| 7 | 8 | 9 | 10 | 11 | 12 | 13 |
| 14 | 15 | 16 | 17 | 18 | 19 | 20 |
| 21 | 22 | 23 | 24 | 25 | 26 | 27 |
| 28 | 29 | 30 | 31 | | | |

June 23

| | | | | | | |
|----|----|----|----|----|----|----|
| Su | M | Tu | W | Th | F | Sa |
| | | | | 1 | 2 | 3 |
| 4 | 5 | 6 | 7 | 8 | 9 | 10 |
| 11 | 12 | 13 | 14 | 15 | 16 | 17 |
| 18 | 19 | 20 | 21 | 22 | 23 | 24 |
| 25 | 26 | 27 | 28 | 29 | 30 | |

July 23

| | | | | | | |
|----|----|----|----|----|----|----|
| Su | M | Tu | W | Th | F | Sa |
| | | | | | | 1 |
| 2 | 3 | 4 | 5 | 6 | 7 | 8 |
| 9 | 10 | 11 | 12 | 13 | 14 | 15 |
| 16 | 17 | 18 | 19 | 20 | 21 | 22 |
| 23 | 24 | 25 | 26 | 27 | 28 | 29 |
| 30 | 31 | | | | | |

August 23

| | | | | | | |
|----|----|----|----|----|----|----|
| Su | M | Tu | W | Th | F | Sa |
| | | | | | | 1 |
| 2 | 3 | 4 | 5 | 6 | 7 | 8 |
| 9 | 10 | 11 | 12 | 13 | 14 | 15 |
| 16 | 17 | 18 | 19 | 20 | 21 | 22 |
| 23 | 24 | 25 | 26 | 27 | 28 | 29 |
| 30 | | | | | | |

Graduation May 26th
Holiday No classes
 September 5th - Labor Day
 October 10th - Columbus Day/Conference
 Nov. 21st - 25th - Thanksgiving
 Dec. 19th - Jan. 6th - Christmas
 Jan. 5th-7th - Stockshow
 Feb. 20th - Presidents Day
 March 13th - 17th - Spring Break
 April 7th - 10th - Easter Weekend
 May 20th - Memorial Day
 Aug 1st - May 26th = 187 Work Days

First Day of Class
 Last Day of Class
 Starts a six weeks
 Ends a six weeks


Holiday
 Staff Development/Workday
 Teacher Workday
 State Assessment
 New Teacher Inservice
 Bad Weather Days

| | | Start and End Times | |
|------------------------|----------------------------|---------------------|--------------|
| | | Secondary | Elementary |
| | = Regular Days 140 x 481 = | 7:55 - 3:36 | 7:50 - 3:30 |
| | = Fridays 29 x 429 = | 7:55 - 3:04 | 7:50 - 3:00 |
| | = Early Release 7 x 275 = | 7:55 - 12:30 | 7:50 - 12:30 |
| Total Minutes = | | 78,906 | |

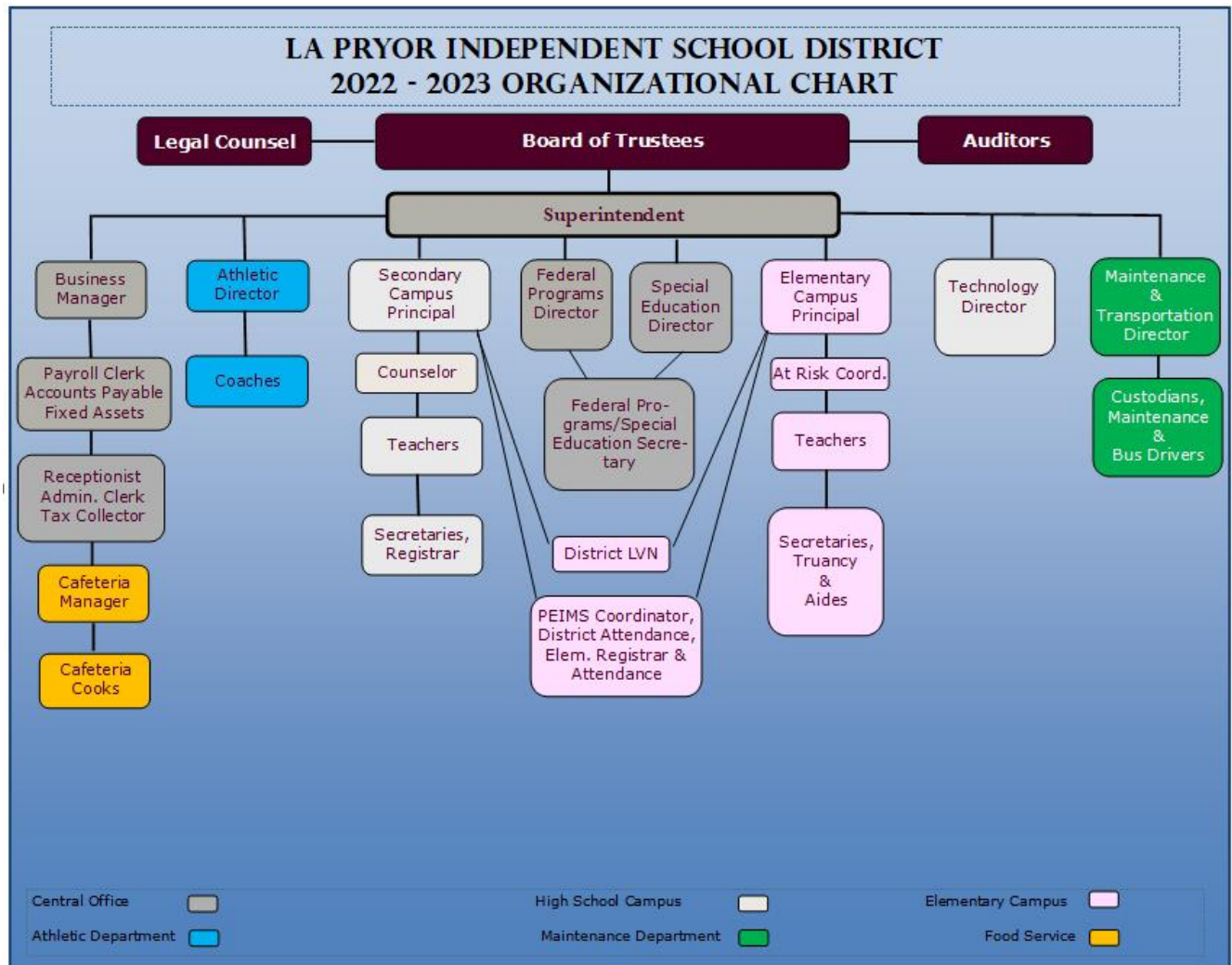
Approved 2.23.2022

Helpful Contacts

From time to time, employees have questions or concerns. If those questions or concerns cannot be answered by supervisors or at the campus or department level, the employee is encouraged to contact the appropriate department at the Central Office.

| | | | |
|--|--|--|--|
|  LA PRYOR ISD PREPARING THE FUTURE P.O. Box 519 - La Pryor, TX 78872 | | CENTRAL OFFICE (830)365-4000 FAX (830) 365-4006 DR. WILLIAM AREVALO 101 MIRIAM DEL RIO 104 CLAUDIA GARCIA 100 FRONT DESK 102 JULIE RAMOS 103 MAIL ROOM 107 ANNEX DAEP (HS) 231 CONF. ROOM (ELEM DAEP) 230 | |
| PHYSICAL ADDRESSES Central Office 311 E. Hwy 57 High School 165 E. Edith St. Elementary 201 N. Miller St. Gym 255 N. Estes Multipurpose Bldg. 123 N. Miller St. Baseball/Softball Complex 391 S. Clamp Armando "Mandy" Najera 316 N. Estes Ave. Memorial Bulldog Stadium | | LPISD TAX OFFICE (830)365-4017 FAX (830) 365-4016 EVA GONZALEZ 105 CAFETERIA MARIA CASTILLO 228 KITCHEN 229 MAINTENANCE/TRANSP JOHN GAITAN 208 | |
| 2022-2023 NURSE MARIA HERNANDEZ 305 | | SPECIAL PROGRAMS OFFICE (830) 365-4004 FAX (830) 365-4012 JOSIE CASTILLO.....321 SPEECH RM.....317 KALLIE MOFFET.....322 ANNA ROJAS...319 MARYANN PEREZ ..329 RICK RODRIGUEZ ..320 | |
| HIGH SCHOOL OFFICE (830)365-4005 FAX (830) 365-4026 (830) 365-4007 OFFICE EXTENSIONS COUNSELOR'S OFFICE RACHEL LAMBERT..... 200 YVETTE TALAMANTES...210 MONICA QUIJANO.....202 HS CONF. RM.....241 FRONT DESK.....242 JA NETTE PEREZ.....203 CLASSROOM EXTENSIONS BAEZ, JESSE.....235 GEHRING, H.....219 BOTELLO, J.....222 GUERRE RO, D.....212 CASTILLO, JOSE.....221 GYM OFFICE.....236 CERNA, M.....225 HS LAB.....234 COACH'S OFFICE.....236 ISQUIERDO, J.....216 CONTRERAS, A.....207 LOPEZ, C.....214 DAEP (HS).....231 MORALES, J.....224 DE LEON, M.....218 PELTON, V.....227 GOMEZ, A.....247 PEREZ, J.....217 DE HOYOS, M.....237 PEREZ, R.....220 DUARTE, M.....205 RANGEL, E.....204 FLORES, A.....206 REYNA, T.....245 FRAUSTO, O.....239 ROSALES, R.....233 GARZA, G.....226 RUBALCAVA F.....215 GARZA, S.....243 SANCHEZ, A.....211 TORRES, G.....232 | | ELEMENTARY OFFICE (830)365-4009 FAX (830) 365-4021 OFFICE EXTENSIONS ELEM COUNSELOR PRINCIPAL.....301 ALMA RANGEL.....304 CLARISSA DIAZ.....300 TECH DIRECTOR..... DELIA PEREZ.....326 ROQUE OLASCOAGA.....314 ELISA LOZANO.....302 WORKROOM.....305 ONLINE-CTR (PK-K).....312 RECORDS ROOM.....303 ELEM LIBR313 CLASSROOM EXTENSIONS PK PUENTE, C.....309 4TH JONES, M.....333 PK BALL, A.....311 4TH DE LA ROSA, M.....332 K DUBE, J.....308 4TH VERA, S.....327 K GONZALES, E.....310 5TH SANCHEZ, M.....334 1ST ISQUIERDO, R.....323 5TH CERVANTES, M.....335 1ST GARCIA, M.....325 6TH MARTINEZ, N.....336 2ND LOPEZ, E.....328 6TH SAUCEDO, R.....337 2ND ALVARADO, G.....324 FLS DELGADO, C.....307 3RD YBARRA, D.....331 FLS BRADY, J.....312 3RD NEVAREZ, R.....330 ART PEREZ, MARICELA...315 RTI318 PE BERMEA, A.....338 | |
| | | 10/20/22 | |

Organizational Chart



Employment

Equal Employment Opportunity

Policies DAA, DIA

In its efforts to promote nondiscrimination and as required by law, La Pryor ISD does not discriminate against any employee or applicant for employment because of race, color, religion, sex, (including pregnancy, sexual orientation, or gender identity), national origin, age, disability, military status, genetic information, or on any other basis prohibited by law. Additionally, the district does not discriminate against an employee or applicant who acts to oppose such discrimination or participates in the investigation of a complaint related to a discriminatory employment practice. Employment decisions will be made on the basis of each applicant's job qualifications, experience, and abilities.

In accordance with Title IX, the district does not discriminate on the basis of sex and is required not to discriminate on the basis of sex in its educational programs or activities. The requirement not to discriminate extends to employment. Inquires about the application of Title IX may be referred to the district's Title IX coordinator, to the Assistant Secretary for Civil Rights of the Department of Education, or both.

The district designates and authorizes the following employee as the Title IX coordinator for employees to address concerns or inquiries regarding discrimination based on sex, including sexual harassment: Dr. William Arevalo Superintendent, 311 E Hwy 57, william.arevalo@lapryor.net, 830-365-4000. Reports can be made at any time and by any person, including during non-business hours, by mail, email, or phone. During district business hours, reports may also be made in person.

The district designates and authorizes the following employee as the ADA/Section 504 coordinator for employees for concerns regarding discrimination on the basis of a disability: Dr. William Arevalo, Superintendent, 311 E Hwy 57, william.arevalo@lapryor.net, 830-365-4000.

Job Vacancy Announcements

Policy DC

Announcements of job vacancies by position and location are posted on a regular basis to the District's website.

Employment After Retirement

Policy DC

Individuals receiving retirement benefits from the Teacher Retirement System (TRS) may be employed in limited circumstances on a full- or part-time basis without affecting their benefits, according to TRS rules and state law. Detailed information about employment after retirement is available in the TRS publication Employment After Retirement. Employees can contact TRS for additional information by calling 800-223-8778 or 512-542-6400. Information is also available on the TRS Web Site (www.trs.state.tx.us).

Contract and Noncontract Employment

Policy DC series

State law requires the district to employ all full-time professional employees in positions requiring a certificate from the State Board for Educator Certification (SBEC) and nurses under probationary, term, or continuing contracts. Employees in all other positions are employed at-will or by a contract that is not subject to the procedures for nonrenewal or termination under Chapter 21 of the Texas Education Code. The paragraphs that follow provide a general description of the employment arrangements used by the district.

Probationary Contracts. Nurses and full-time professional employees new to the district and employed in positions requiring SBEC certification must receive a probationary contract during their first two years of employment. Former employees who are hired after a two-year lapse in district employment or employees who move to a position requiring a new class of certification may also be employed by probationary contract. Probationary contracts are one-year contracts. The probationary period for those who have been employed as a teacher in public education for at least five of the eight years preceding employment with the district may not exceed two school years.

For those with less experience, the probationary period will be three school years (i.e., three one-year contracts) with an optional fourth school year if the board determines it is doubtful whether a term or continuing contract should be given.

Term Contracts. Full-time professionals employed in positions requiring certification and nurses will be employed by term contracts after they have successfully completed the probationary period. The terms and conditions of employment are detailed in the contract and employment policies. All employees will receive a copy of their contract. Employment policies can be accessed on line or copies will be provided upon request.

Noncertified Professional and Administrative Employees. Employees in professional and administrative positions that do not require SBEC certification (such as non-instructional administrators) are not employed by contract. Employment is not for any specified term and may be terminated by either the employee or the District.

Paraprofessional and Auxiliary Employees. All paraprofessional and auxiliary employees, regardless of certification, are employed at will and not by contract. Employment is not for any specified term and may be terminated at any time by either the employee or the District.

Certification and Licenses

Policies DBA, DF

Professional employees whose positions require SBEC certification or professional license are responsible for taking actions to ensure their credentials do not lapse. Employees must submit documentation that they have passed the required certification exam and/or obtained or renewed their credentials to Human Resources in a timely manner. Employees licensed by the Texas Department of Licensing and Regulations (TDLR) must notify Dr. William Arevalo when there is action against, or revocation of, their license.

A certified employee's contract may be voided without Chapter 21 due process and employment terminated if the individual does not hold a valid certificate or fails to fulfill the requirements necessary to renew or extend a temporary certificate, emergency certificate, probationary certificate, or permit. A contract may also be voided if SBEC suspends or revokes certification because of an individual's failure to comply with criminal history background checks. Contact SBEC if you have any questions regarding certification or licensure requirements.

Searches and Alcohol and Drug Testing

Policies CQ, DHE

Non-investigatory searches in the workplace including accessing an employee's desk, file cabinets, or work area to obtain information needed for usual business purposes may occur when an employee is unavailable. Therefore, employees are hereby notified that they have no legitimate expectation of privacy in those places. In addition, the district reserves the right to conduct searches when there is reasonable cause to believe a search will uncover evidence of work-related misconduct. Such an investigatory search may include drug and alcohol testing if the suspected violation relates to drug or alcohol use. The district may search the employee, the employee's personal items, and work areas including district-owned computers, lockers, and private vehicles parked on district premises or work sites or used in district business.

Employees Required to Have a Commercial Driver's License. Any employee whose duties require a commercial driver's license (CDL) is subject to drug and alcohol testing. This includes all drivers who operate a motor vehicle designed to transport 16 or more people counting the driver, drivers of large vehicles, or drivers of vehicles used in the transportation of hazardous materials. Teachers, coaches, or other employees who primarily perform duties other than driving are subject to testing requirements if their duties include driving a commercial motor vehicle.

Drug testing will be conducted before an individual assumes driving responsibilities. Alcohol and drug tests will be conducted when reasonable suspicion exists, at random, when an employee returns to duty after engaging in prohibited conduct, and as a follow-up measure. Testing may be conducted following accidents. Return-to-duty and follow-up testing will be conducted if an employee who has violated the prohibited alcohol conduct standards or tested positive for alcohol or drugs is allowed to return to duty.

All employees required to have a CDL or who otherwise are subject to alcohol and drug testing will receive a copy of the district's policy, the testing requirements, and detailed information on alcohol and drug abuse and the availability of assistance programs.

Employees with questions or concerns relating to alcohol and drug policies and related educational material should contact the Director of Human Resources.

Health Safety Training

Policies DBA, DMA

Certain employees who are involved in physical activities for students must maintain and submit to the district proof of current certification or training in first aid, cardiopulmonary resuscitation (CPR), the use of an automated external defibrillator (AED), concussion and extracurricular athletic activity safety. Certification or documentation of training must be issued by the American Red Cross, the

American Heart Association, or another organization that provides equivalent training and certification. Employees subject to this requirement must submit their certification or documentation to Human Resources by the first day of instruction.

Reassignments and Transfers

Policy DK

All personnel are subject to assignment and reassignment by the Interim-Superintendent or designee when the Interim-Superintendent or designee determines that the assignment or reassignment is in the best interest of the district. Reassignment is a transfer to another position, department, or facility that does not necessitate a change in the employment contract. Campus reassignments must be approved by the principal at the receiving campus except when reassignments are due to enrollment shifts or program changes. Extracurricular or supplemental duty assignments may be reassigned at any time unless an extracurricular or supplemental duty assignment is part of a dual-assignment contract. Employees who object to a reassignment may follow the district process for employee complaints as outlined in this handbook and district policy DGBA (Local).

An employee with the required qualifications for a position may request a transfer to another campus or department when an opening is posted. The District will post all available positions on the Districts website and an internal application must be completed to be considered for a transfer. Requests to transfer during the school year will be considered only when the change will not adversely affect students and after a replacement has been secured. All transfer requests will be coordinated by the Interim-Superintendent's office and must be approved by the receiving supervisor.

Workload and Work Schedules

Policies DEA, DK, DL

Professional Employees. Professional employees and academic administrators are exempt from overtime pay and are employed on a 10-, 11-, or 12-month basis, according to the work schedules set by the district. A school calendar is adopted each year designating the work schedule for teachers and all school holidays. Notice of work schedules including start and end dates and scheduled holidays will be distributed each school year.

Classroom teachers will have planning periods for instructional preparation including conferences. The schedule of planning periods is set at the campus level but must provide at least 450 minutes within each two-week period in blocks not less than 45 minutes within the instructional day. Teachers and librarians are entitled to a duty-free lunch period of at least 30 minutes. The district may require teachers to supervise students during lunch one day a week when no other personnel are available.

Professional employees who must leave campus during their planning period or at any time during the work day except during a designated lunch period are required to request permission from the campus principal.

The school day for professional employees starts at 7:30 am and ends at 4:00 pm.

Paraprofessional and Auxiliary Employees. Support employees are employed at will and receive notification of the required duty days, non-work days, and hours of work for their position on an annual basis. Paraprofessional and auxiliary employees must be compensated for overtime and are not

authorized to work in excess of their assigned schedule without prior approval from their supervisor. See *Overtime Compensation* on page 16 for additional information.

Staff members who must leave campus anytime during the work day, except during a designated lunch period, are required to request permission from their supervisor.

Breaks for Expression of Breast Milk

Policies DEA, DEAB, DG

The District supports the practice of expressing breast milk and makes reasonable accommodations for the needs of employees who express breast milk. A place, other than a multiple user bathroom, that is shielded from view and free from intrusion from other employees and the public where the employee can express breast milk will be provided.

A reasonable amount of break time will be provided when the employee has a need to express milk. For nonexempt employees, these breaks are unpaid and are not counted as hours worked. Employees should meet with their supervisor to discuss their needs and arrange break times.

Notification to Parents Regarding Qualifications

Policies DK, DBA

In schools receiving Title I funds, the district is required by the Every Student Succeeds Act (ESSA) to notify parents at the beginning of each school year that they may request information regarding the professional qualifications of their child's teacher. ESSA also requires that parents be notified if their child has been assigned or taught for four or more consecutive weeks by a teacher who does not meet applicable state certification or licensure requirements.

Texas law requires that parents be notified if their child is assigned for more than 30 consecutive instructional days to a teacher who does not hold an appropriate teaching certificate. This notice is not required if parental notice under ESSA is sent. Inappropriately certified or uncertified teachers include individuals on an emergency permit (including individuals waiting to take a certification exam) and individuals who do not hold any certificate or permit. Information relating to teacher certification will be made available to the public upon request. Employees who have questions about their certification status can call the office of human resource.

Outside Employment and Tutoring

Policy DBD

Employees are required to disclose in writing to their immediate supervisor any outside employment that may create a potential conflict of interest with their assigned duties and responsibilities or the best interest of the district. Supervisors will consider outside employment on a case-by-case basis and determine whether it should be prohibited because of a conflict of interest. Any outside employment may not conflict with the employee's current schedule or duties.

Performance Evaluation

Policy DN series

Evaluation of an employee's job performance is a continuous process that focuses on improvement. Performance evaluation is based on an employee's assigned job duties and other job-related criteria. All employees will participate in the evaluation process with their assigned supervisor at least annually. Written evaluations will be completed on forms approved by the district. Reports, correspondence, and memoranda also can be used to document performance information. All employees will receive a copy of their written evaluation, participate in a performance conference with their supervisor, and have the opportunity to respond to the evaluation.

Employee Involvement

Policies BQA, BQB

At both the campus and district levels, La Pryor ISD offers opportunities for input in matters that affect employees and influence the instructional effectiveness of the district. As part of the district's planning and decision-making process, employees are elected to serve on district- or campus- level advisory committees. Plans and detailed information about the shared decision-making process are available in each campus office or from the Principals.

Staff Development

Policy DMA

Staff development activities are organized to meet the needs of employees and the district. Staff development for instructional personnel is required and is predominantly campus-based, related to achieving campus performance objectives, addressed in the campus improvement plan, and approved by campus-level advisory committee. Staff development for non-instructional personnel is designed to meet specific licensing requirements (e.g. bus drivers) and continued employee skill development. Individuals holding renewable SBEC certificates are responsible for obtaining the required training hours and maintaining appropriate documentation.

Individuals holding renewable SBEC certificates are responsible for obtaining the required training hours and maintaining appropriate documentation.

Professional Development and Non-Attendance of Professional Development

If a staff member registers for professional development training and does not attend, that staff member will reimburse the district if there is a cost charged to the district. Note, not all Region 20 trainings are free for our district. A purchase order must be submitted and approved before any registration is made. It is the responsibility of the staff member to cancel their training if they know they will be unable to attend. This applies for emergencies situations that come up the day of or before the training.

Compensation and Benefits

Salaries, Wages, and Stipends

Policies DEA, DEAA, DEAB

Employees are paid in accordance with administrative guidelines and an established pay structure. The district's pay plans are reviewed by the administration each year and adjusted as needed. All district positions are classified as exempt or nonexempt according to federal law. Professional employees and academic administrators are generally classified as exempt and are paid monthly salaries. They are not entitled to overtime compensation. Other employees are generally classified as non-exempt and are paid an hourly wage or salary and receive compensatory time or overtime pay for each hour worked beyond 40 in a workweek. (See *Overtime Compensation*, pg 17.)

All employees will receive written notice of their pay and work schedules before the start of each school year. Classroom teachers, full-time librarians, full-time nurses, and full-time counselors will be paid no less than the minimum state salary schedule. Contract employees who perform extracurricular or supplemental duties may be paid a stipend in addition to their salary according to the district's stipend schedule.

Employees should contact Human Resources for more information about the district's pay schedules or their own pay.

Paychecks

All LPISD employees are paid bi-monthly. Paychecks will not be released to any person other than the district employee named on the check without the employee's written authorization.

An employee's payroll statement contains detailed information including deductions, withholding information, and the amount of leave accumulated. The schedule of pay dates for the 2022-2023 school year follows:

| | | | |
|--------------------|--------------------|-------------------|-------------------|
| September 15, 2022 | September 30, 2022 | October 14, 2022 | October 28, 2022 |
| November 15, 2022 | November 30, 2022 | December 15, 2022 | December 30, 2022 |
| January 13, 2023 | January 30, 2023 | February 15, 2023 | February 28, 2023 |
| March 15, 2023 | March 30, 2023 | April 14, 2023 | April 28, 2023 |
| May 13, 2023 | May 30, 2023 | June 15, 2023 | June 30, 2023 |
| July 14, 2023 | July 28, 2023 | August 15, 2023 | August 30, 2023 |

Automatic Payroll Deposit

Employees can have their paychecks electronically deposited into a designated account. A notification period of two weeks is necessary to activate this service. Contact the Payroll office for more information about the automatic payroll deposit service.

Payroll Deductions

Policy CFEA

The district is required to make the following automatic payroll deductions:

- Teacher Retirement System of Texas (TRS) or Social Security employee contributions
- Federal income tax required for all full-time employees
- Medicare tax (applicable only to employees hired in this district after March 31, 1986)
- Child Support and spousal maintenance, if applicable
- Delinquent federal education loan payments, if applicable

Other payroll deductions employees may elect include deductions for the employee's share of premiums for health, dental, life, and vision insurance; annuities; and higher education savings plans. Employees also may request payroll deduction for payment of membership dues to professional organizations. Salary deductions are automatically made for unauthorized or unpaid leave. The District does not allow payroll advances.

Overtime Compensation

Policy DEA

The district compensates overtime for nonexempt employees in accordance with federal wage and hour laws. Only nonexempt employees (hourly employees and paraprofessional employees) are entitled to overtime compensation. **Nonexempt employees are not authorized to work beyond their normal work schedule without advance approval from their supervisor.**

Overtime is legally defined as all hours worked in excess of 40 hours in a workweek and is not measured by the day or by the employee's regular work schedule. Nonexempt employees that are paid on a salary basis are paid for a 40-hour workweek and do not earn additional pay unless they work more than 40 hours. For the purpose of calculating overtime, a workweek begins at 12:01 a.m. Sunday and ends at midnight Saturday.

Employees may be compensated for overtime at time-and-a-half rate with compensatory time off (comp time) or direct pay. The following applies to all nonexempt employees:

- Comp time must be used in the duty year that it is earned.
- Use of comp time may be at the employee's request with supervisor approval, as workload permits, or at the supervisor's direction.
- An employee is required to use comp time before using available paid leave (e.g., sick, personal, vacation).
- Weekly time records will be maintained on all nonexempt employees for the purpose of wage and salary administration.

Travel Expense Reimbursement

Policy DEE

Before any travel expenses are incurred by an employee, the employee's supervisor must give approval. For approved travel, employees will be reimbursed for mileage and other travel expenditures according to the current rate schedule established by the district. Employees must submit receipts, to the extent possible, to be reimbursed for expenses other than mileage.

Per diem for meals may be requested in advance for overnight travel. Meal rates for per diem and meal reimbursement, as well as mileage reimbursements rates, are available in the Business Office. No meals will be reimbursed at a higher rate than the per diem rate of Breakfast - \$13.00, Lunch - \$15.00, and Dinner - \$18.00.

Health, Dental, and Life Insurance

Policy CRD

Group health insurance coverage is provided through TRS-ActiveCare, the statewide public school employee health insurance program. The district's contribution to employee insurance premiums is determined annually by the board of trustees. Employees eligible for health insurance coverage include the following:

- Employees who are active, contributing TRS members
- Employees who are not contributing TRS members and who are employed for 10 or more regularly scheduled hours per week

TRS retirees who are enrolled in TRS-Care (retiree health insurance program) are not eligible to participate in TRS-ActiveCare.

The insurance plan year is from September 1 through August 31. Current employees can make changes in their insurance coverage during open enrollment each year or when they experience a qualifying event (e.g., marriage, divorce, birth). Detailed descriptions of insurance coverage, employee cost, and eligibility requirements are provided to all employees in a separate booklet. Employees should contact Human Resources for more information.

Supplemental Insurance Benefits

Policy CRD

At their own expense, employees may enroll in supplemental insurance programs for dental, vision, supplemental life and disability. Premiums for these programs can be paid by payroll deduction. Employees should contact the Human Resources for more information.

Cafeteria Plan Benefits (Section 125)

Employees may be eligible to participate in the Cafeteria Plan (Section 125) and, under IRS regulations, must either accept or reject this benefit. This plan enables eligible employees to pay certain insurance premiums on a pretax basis (i.e., disability, accidental death and dismemberment, cancer and dread disease, dental, and additional term life insurance). A third-party administrator handles employee claims made on these accounts.

New employees must accept or reject this benefit during their first month of employment. All employees must accept or reject this benefit on an annual basis and during the specified time period.

Workers' Compensation Insurance

Policy CRE

The district, in accordance with state law, provides workers' compensation benefits to employees who suffer a work-related illness or are injured on the job. The district has compensation coverage through School Comp administered by Creative Risk Funding, Inc. effective 9/1/1996.

Benefits help pay for medical treatment and make up for part of the income lost while recovering. Specific benefits are prescribed by law depending on the circumstances of each case.

All work-related accidents or injuries should be reported immediately to your supervisor or the Administration office. Employees who are unable to work because of a work-related injury will be notified of their rights and responsibilities under the Texas Labor Code. See *Workers' Compensation Benefits*, page 26 for information on use of paid leave for such absences.

Unemployment Compensation Insurance

Policy CRF

Employees who have been laid off or terminated through no fault of their own may be eligible for unemployment compensation benefits. Employees are not eligible to collect unemployment benefits during regularly scheduled breaks in the school year or the summer months if they have employment contracts or reasonable assurance of returning to service. Employees with questions about unemployment benefits should contact Human Resources.

Teacher Retirement

All personnel employed on a regular basis for at least four and one-half months are members of the Teacher Retirement System of Texas (TRS). Substitutes not receiving TRS service retirement benefits who work at least 90 days a year are eligible to purchase a year of creditable service in TRS. TRS provides members with an annual statement of their account showing all deposits and the total account balance for the year ending August 31, as well as an estimate of their retirement benefits.

Employees who plan to retire under TRS should notify TRS as soon as possible. Information on the application procedures for TRS benefits is available from TRS at Teacher Retirement System of Texas, 1000 Red River Street, Austin, TX 78701-2698, or call 800-223-8778 or 512-542-6400. TRS information is also available on the Web (www.trs.state.tx.us). See page 9 for information on restrictions of employment of retirees in Texas public schools.

Other Benefit Programs

Any District provisions regarding insurance programs and/or deferred compensation programs are found in policies CRG (LOCAL) and DEC (LOCAL), respectively.

Leaves and Absences

Policies DEC, DECA, DECB

The district offers employees paid and unpaid leaves of absence in times of personal need. This handbook describes the basic types of leave available and restrictions on leaves of absence. Employees who expect to be absent for an extended period of more than five days should call the Central Office for information about applicable leave benefits, payment of insurance premiums, and requirements for communicating with the district.

Use of Leave. Leave must be used in ½ day increments for employees who are in exempt positions and in ½ hour increments for non-exempt positions. However, if an employee is taking intermittent family and medical leave, leave shall be recorded in one-hour increments. Earned comp time must be used before any available paid state and local leave. Unless an employee requests a different order, available paid state and local leave will be used in the following order:

- Comp time
- Local
- State

Employees must follow district and department or campus procedures to report or request any leave of absence and complete the appropriate form or certification. Any unapproved absences or absences beyond accumulated or available paid leave shall result in deduction from the employee's pay.

Once all available leave has been exhausted, employees will be docked their daily rate at ½ day increments for any other absences.

Employees must follow district and department or campus procedures to report or request any leave of absence and complete the appropriate form of certification.

Immediate Family. For purposes of leave other than family and medical leave, immediate family is defined as the following:

- Spouse
- Son or daughter, including a biological, adopted, or foster child, a son- or daughter-in-law, a stepchild, a legal ward, or a child for whom employee stands *in loco parentis*.
- Parent, stepparent, parent-in-law, or other individual who stands *in loco parentis* to the employees.
- Sibling, stepsibling, and sibling-in-law
- Grandparent and grandchild
- Any person residing in the employee's household at the time of illness or death.

For purposes of medical and family leave, the definition of family is limited to spouse, parent, son or daughter, and next of kin. The definition of these are found in Policy DECA (LEGAL).

Medical Certification. Any employee who is absent more than 3 days because of a personal or family illness must submit a medical certification from a qualified health care provider confirming the specific dates of the illness, the reason for the illness, and—in the case of personal illness—the employee's fitness to return to work.

The Genetic Information Nondiscrimination Act of 2008 (GINA) prohibits covered employers from requesting or requiring genetic information of an individual or family member of the individual, except as specifically allowed by this law. To comply with this law, we ask that employees and health care providers do not provide any genetic information in any medical certification. 'Genetic information,' as defined by GINA, includes an individual's family medical history, the results of an individual's or family member's genetic tests, the fact that an individual or an individual's family member sought or received genetic services, and genetic information of a fetus carried by an individual or an individual's family member or an embryo lawfully held by an individual or family member receiving assistive reproductive services.

Continuation of Health Insurance. Employees on an approved leave of absence other than family and medical leave may continue their insurance benefits at their own expense. Health insurance benefits for employees on paid leave and leave designated under the Family and Medical Leave Act will be paid by the district as they were prior to the leave. Otherwise, the district does not pay any portion of insurance premiums for employees who are on unpaid leave.

Under TRS-Active Care rules, an employee is no longer eligible for insurance through the district after six months of unpaid leave other than FML. If an employee's unpaid leave extends for more than six months, the district will provide the employee with notice of COBRA rights.

Personal Leave

State law entitles all employees to five days of paid personal leave per year. Personal leave is available for use at the beginning of the year. A day of personal leave is equivalent to the number of hours per day in an employee's usual assignment, whether full-time or part-time. State personal leave accumulates without limit, is transferable to other Texas school districts, and generally transfers to education service centers. Personal leave may be used for two general purposes:

Nondiscretionary. Leave taken for personal or family illness, family emergency, a death in the family, or active military service is considered nondiscretionary leave. Reasons for this type of leave allow very little, if any, advance planning. Nondiscretionary leave may be used in the same manner as state sick leave.

Discretionary. Leave taken at an employee's discretion that can be scheduled in advance is considered discretionary leave. An employee wishing to take discretionary personal leave must submit a request to his or her principal or supervisor 4 days in advance of the anticipated absence. The effect of the employee's absence on the educational program or department operations, as well as the availability of substitutes, will be considered by the principal or supervisor. **Discretionary personal leave is generally not allowed on state assessment days, staff development days, and immediately before or after scheduled holidays including ½ day pm before and ½ day am after a holiday. ½ day am before and ½ day pm after a holiday are allowed. Emergency situations are an exemption to this attendance policy. In the event of an emergency necessitating an absence when leave is otherwise prohibited, documentation as to the nature of the emergency and/or a physician's note will be required on the date of the employee's return Any unexplained absence on these dates will result in documentation for the employee.**

Leave Proration. If an employee separates from employment with the district before his or her last duty day of the year, or begins employment after the first duty day, state personal leave will be prorated based on the actual time employed. When an employee separates from employment before the last duty day of the school year, the employee's final paycheck will be reduced by the amount of state personal leave the employee used beyond his or her pro rata entitlement for the school year.

State Sick Leave

State sick leave accumulated before 1995 is available for use and may be transferred to other school districts in Texas.

State sick leave may be used for the following reasons only:

- Employee illness
- Illness in the employee's immediate family
- Family emergency (i.e., natural disasters or life-threatening situations)
- Death in the immediate family
- Active military service

Local Leave

All full time employees shall earn an additional five workdays of local leave per school year, concurrently with state leave. Local can be used the same as state leave. Local days do not accumulate.

Leave Proration. If an employee separates from employment with the district before his or her last duty day of the year, or begins employment after the first duty day, state personal leave will be prorated based on the actual time employed. When an employee separates from employment before the last duty day of the school year, the employee's final paycheck will be reduced by the amount of state personal leave the employee used beyond his or her pro rata entitlement for the school year.

Family and Medical Leave Act (FMLA)—General Provisions

The following text is from the federal notice, *Employee Rights and Responsibilities Under the Family and Medical Leave Act*. Specific information that the district has adopted to implement the FMLA follows this general notice.

Basic Leave Entitlement. The FMLA requires covered employers to provide up to 12 weeks of unpaid, job-protected leave to eligible employees for the following reasons:

- For incapacity due to pregnancy, prenatal medical care or child birth;
- To care for the employee's child after birth, or placement for adoption or foster care;
- To care for the employee's spouse, son or daughter, or parent, who has a serious health condition;
- or
- For a serious health condition that makes the employee unable to perform the employee's job.

Military Family Leave Entitlements. An eligible employee whose spouse, son, daughter, or parent is on covered active duty or called to covered active duty status may use his or her 12-week leave

entitlement to address certain qualifying exigencies. Qualifying exigencies may include attending certain military events, arranging for alternative childcare, addressing certain financial and legal arrangements, attending certain counseling sessions, and attending post-deployment reintegration briefings.

The FMLA also includes a special leave entitlement that permits eligible employees to take up to 26 weeks of leave to care for a covered service member during a single 12-month period. A covered service member is (1) a current member of the Armed Forces, including a member of the National Guard or Reserves, who is undergoing medical treatment, recuperation, or therapy, is otherwise in outpatient status, or is otherwise on the temporary disability retired list, for a serious injury or illness*; or (2) a veteran who was discharged or released under conditions other than dishonorable at any time during the five-year period prior to the first date the eligible employee takes FMLA leave to care for the covered veteran, and who is undergoing medical treatment, recuperation, or therapy for a serious injury or illness.*

The FMLA definitions of “serious injury or illness” for current service members and veterans are distinct from the FMLA definition of “serious health condition”.

Benefits and Protections. During FML, the employer must maintain the employee’s health coverage under any “group health plan” on the same terms as if the employee had continued to work. Upon return from FML, most employees must be restored to their original or equivalent positions with equivalent pay, benefits, and other employment terms.

Use of FML cannot result in the loss of any employment benefit that accrued prior to the start of an employee’s leave.

Eligibility Requirements. Employees are eligible if they have worked for a covered employer for at least one year, for 1,250 hours over the previous 12 months, and if at least 50 employees are employed by the employer within 75 miles.

Definition of Serious Health Condition. A serious health condition is an illness, injury, impairment, or physical or mental condition that involves either an overnight stay in a medical care facility, or continuing treatment by a health care provider for a condition that either prevents the employee from performing the functions of the employee’s job, or prevents the qualified family member from participating in school or other daily activities.

Subject to certain conditions, the continuing treatment requirement may be met by a period of incapacity of more than 3 consecutive calendar days combined with at least two visits to a health care provider or one visit and a regimen of continuing treatment, or incapacity due to pregnancy, or incapacity due to a chronic condition. Other conditions may meet the definition of continuing treatment.

Use of Leave. An employee does not need to use this leave entitlement in one block. Leave can be taken intermittently or on a reduced leave schedule when medically necessary. Employees must make reasonable efforts to schedule leave for planned medical treatment so as not to unduly disrupt the employer’s operations. Leave due to qualifying exigencies may also be taken on an intermittent basis.

Substitution of Paid Leave for Unpaid Leave. Employees may choose or employers may require use of accrued paid leave while taking FML. In order to use paid leave for FML, employees must comply

with the district's normal paid leave policies.

Employee Responsibilities. Employees must provide 30 days advance notice of the need to take FML when the need is foreseeable. When 30 days notice is not possible, the employee must provide notice as soon as practicable and generally must comply with an employer's normal call-in procedures.

Employees must provide sufficient information for the employer to determine if the leave may qualify for FMLA protection and the anticipated timing and duration of the leave. Sufficient information may include that the employee is unable to perform job functions, the family member is unable to perform daily activities, the need for hospitalization or continuing treatment by a health care provider, or circumstances supporting the need for military family leave. Employees also must inform the employer if the requested leave is for a reason for which FML was previously taken or certified. Employees also may be required to provide a certification and periodic recertification supporting the need for leave.

Employer Responsibilities. Covered employers must inform employees requesting leave whether they are eligible under the FMLA. If they are eligible, the notice must specify any additional information required as well as the employees' rights and responsibilities. If they are not eligible, the employer must provide a reason for the ineligibility.

Covered employers must inform employees if leave will be designated as FML and the amount of leave counted against the employee's leave entitlement. If the employer determines that the leave is not FML, the employer must notify the employee.

Unlawful Acts by Employers. The FMLA makes it unlawful for any employer to: interfere with, restrain, or deny the exercise of any right protected under the FMLA; discharge or discriminate against any person for opposing any practice made unlawful by the FMLA or for involvement in any proceeding under or relating to the FMLA.

Enforcement. An employee may file a complaint with the U.S. Department of Labor or may bring a private lawsuit against an employer.

The FMLA does not affect any Federal or State law prohibiting discrimination or supersede any state or local law or collective bargaining agreement which provides greater family or medical leave rights.

FMLA section 109 (29 U.S.C. § 2619) requires FMLA covered employers to post the text of this notice. Regulations 29 C.F.R. § 825.300 (a) may require additional disclosures.

For additional information:

1-866-4US-WAGE (1-866-487-9243) TTY: 1-877-889-5627 www.wagehour.dol.gov

Local Family and Medical Leave Provisions

Eligible employees can take up to 12 weeks of unpaid leave in the 12-month period beginning on the first duty day of the school year.

Use of Paid Leave. FML runs concurrently with accrued sick and personal leave, temporary disability leave, compensatory time, assault leave, and absences due to a work-related illness or injury. The district will designate the leave as FML, if applicable, and notify the employee that accumulated leave

will run concurrently.

Combined Leave for Spouses. Spouses who are employed by the district are limited to a combined total of 12 weeks of FML to care for a parent with a serious health condition; or for the birth, adoption, or foster placement of a child. Military caregiver leave for spouses is limited to a combined total of 26 weeks.

Intermittent Leave. When medically necessary or in the case of a qualifying exigency, an employee may take leave intermittently or on a reduced schedule. The district does not permit the use of intermittent or reduced-schedule leave for the care of a newborn child or for adoption or placement of a child with the employee.

Fitness for Duty. An employee that takes FML due to the employee's own serious health condition shall provide, before resuming work, a fitness-for-duty certification from the health care provider. When leave is taken for the employee's own serious health condition, the certification must address the employee's ability to perform essential job functions. The district shall provide a list of essential job functions (e.g., job description) to the employee with the FML designation notice to share with the health care provider. Fitness for duty is not required when an employee returns to work following leave to care for a family member with a serious health condition; to care for a child following birth, adoption, or foster care placement; or for qualifying exigency leave.

Reinstatement. An employee returning to work at the end of FML will be returned to the same position held when the leave began or to an equivalent position with equivalent employment benefits, pay, and other terms and conditions of employment. In certain cases, instructional employees desiring to return to work at or near the conclusion of a semester may be required to continue on family and medical leave until the end of the semester. The additional time off is not counted against the employee's FML entitlement, and the district will maintain the employees group health insurance and reinstate the employee at the end of the leave according the procedures outlined in policy (see DECA (LEGAL)).

Failure to Return. If, at the expiration of FML, the employee is able to return to work but chooses not to do so, the district may require the employee to reimburse the district's share of insurance premiums paid during any portion of FML when the employee was on unpaid leave. If the employee fails to return to work for a reason beyond the employee's control, such as a continuing personal or family serious health 5/10/2021 Leaves and Absences 42 condition or a spouse being unexpectedly transferred more than 75 miles from the district, the district may not require the employee to reimburse the district's share of premiums paid.

District Contact. Employees that require FML or have questions should contact the Human Resources for details on eligibility, requirements, and limitations.

Temporary Disability Leave

Certified Employees. Any full-time employee whose position requires certification from the State Board for Educator Certification (SBEC) is eligible for temporary disability leave. The purpose of temporary disability leave is to provide job protection to full-time educators who cannot work for an extended period of time because of a mental or physical disability of a temporary nature. Temporary disability leave must be taken as a continuous block of time. It may not be taken intermittently or on a reduced schedule. Pregnancy and conditions related to pregnancy are treated the same as any other

temporary disability.

Employees must request approval for temporary disability leave. An employee's notification of need for extended absence due to the employee's own medical condition shall be accepted as a request for temporary disability leave. The request must be accompanied by a physician's statement confirming the employee's inability to work and estimating a probable date of return. If disability leave is approved, the length of leave is no longer than 180 calendar days.

If an employee is placed on temporary disability leave involuntarily, he or she has the right to request a hearing before the board of trustees. The employee may protest the action and present additional evidence of fitness to work.

When an employee is ready to return to work, Human Resources should be notified at least 30 days in advance. The return-to-work notice must be accompanied by a physician's statement confirming that the employee is able to resume regular duties. Certified employees returning from leave will be reinstated to the school to which they were previously assigned if an appropriate position is available. If an appropriate position is not available, the employee may be assigned to another campus, subject to the approval of the campus principal. If a position is not available before the end of the school year, the employee will be reinstated to a position at the original campus at the beginning of the following school year.

Workers' Compensation Benefits

An employee absent from duty because of a job-related illness or injury may be eligible for workers' compensation weekly income benefits if the absence exceeds seven calendar days.

An employee receiving workers' compensation wage benefits for a job-related illness or injury may choose to use available, partial-day increments of sick leave or any other paid leave benefits to make up the difference between wage benefits and pre-injury or pre-illness wages. While an employee is receiving workers' compensation wage benefits, the district will charge available leave proportionately so that the employee receives an amount equal to the employee's regular salary.

Assault Leave

Assault leave provides extended job income and benefits protection to an employee who is injured as the result of a physical assault suffered during the performance of his or her job. An injury is treated as an assault if the person causing the injury could be prosecuted for assault or could not be prosecuted only because that person's age or mental capacity renders the person non-responsible for purposes of criminal liability.

An employee who is physically assaulted at work may take all the leave time medically necessary (up to two years) to recover from the physical injuries he or she sustained. At the request of an employee, the district will immediately assign the employee to assault leave. Days of leave granted under the assault leave provision will not be deducted from accrued personal leave and must be coordinated with workers' compensation benefits. Upon investigation the district may change the assault leave status and charge leave used against the employee's accrued paid leave. The employee's pay will be deducted if accrued paid leave is not available.

Bereavement Leave

Use of state leave and/or local sick leave for death in the immediate family shall not exceed five workdays per occurrence, subject to the approval of the District.

Jury Duty

Policy DEC, DG

The district provides paid leave to employees who are summoned to jury duty. Employees who report to the court for jury duty may keep any compensation the court provides. An employee should report a summons for jury duty to his or her supervisor as soon as it is received and will be required to provide the district a copy of the summons to document the need for leave.

An employee may be required to report back to work as soon as they are released from jury duty. The supervisor may consider the travel time required and the nature of the individual's position when determining the need to report to work. A copy of the release from jury duty or of documentation of time spent at the court will be required.

Compliance with a Subpoena

Employees will be paid while on leave to comply with a valid subpoena to appear in a civil, criminal, legislative, or administrative proceeding and will not be required to use paid leave. Employees may be required to submit documentation of their need for leave for court appearances.

Military Leave

Paid Leave for Military Service. Any employee who is a member of the Texas National Guard, Texas State Guard, reserve component of the United States Armed Forces, or a member of a state or federally authorized Urban Search and Rescue Team is entitled to 15 days of paid leave per fiscal year when engaged in authorized training or duty ordered by proper authority. An additional seven days of leave per fiscal year are available if called to state active duty in response to a disaster. In addition, an employee is entitled to use available state and local personal or sick leave during a time of active military service.

Reemployment after Military Leave. Employees who leave the district to enter into the United States uniformed services or who are ordered to active duty as a member of the military force of any state (e.g., National or State Guard) may return to employment if they are honorably discharged. Employees who wish to return to the district will be reemployed provided they can be qualified to perform the required duties. Employees returning to work following military leave should contact the district Human Resources office. In most cases, the length of federal military service cannot exceed five years.

Continuation of Health Insurance. Employees who perform service in the uniformed services may elect to continue their health plan coverage at their own cost for a period not to exceed 24 months. Employees should contact Human Resources for details on eligibility, requirements, and limitations.

Employee Relations and Communications

Employee Recognition and Appreciation

Continuous efforts are made throughout the year to recognize employees who make an extra effort

to contribute to the success of the district. Employees are recognized at board meetings, in the district newsletter, and through special events and activities.

District Communications

Throughout the school year, the district publishes newsletters, brochures, fliers, calendars, news releases, and other communication materials. These publications offer employees and the community information pertaining to school activities and achievements. The district website also has event information and it is updated regularly.

Complaints and Grievances

Policy DGBA

In an effort to hear and resolve employee concerns or complaints in a timely manner and at the lowest administrative level possible, the board has adopted an orderly grievance process. Employees are encouraged to discuss their concerns or complaints with their supervisors or an appropriate administrator at any time.

The formal process provides all employees with an opportunity to be heard up to the highest level of management if they are dissatisfied with an administrative response. Once all administrative procedures are exhausted, employees can bring concerns or complaints to the board of trustees. For ease of reference, the district's policy concerning the process of bringing concerns and complaints is reprinted as follows:

Employee Conduct and Welfare

Standards of Conduct

Policy DH

All employees are expected to work together in a cooperative spirit to serve the best interests of the district and to be courteous to students, one another, and the public. Employees are expected to observe the following standards of conduct:

- Recognize and respect the rights of students, parents, other employees, and members of the community.
- Maintain confidentiality in all matters relating to students and coworkers.
- Report to work according to the assigned schedule.
- Notify their immediate supervisor in advance or as early as possible in the event that they must be absent or late. Unauthorized absences, chronic absenteeism, tardiness, and failure to follow procedures for reporting an absence may be cause for disciplinary action.
- Know and comply with department and district policies and procedures.

- Express concerns, complaints, or criticism through appropriate channels.
- Observe all safety rules and regulations and report injuries or unsafe conditions to a supervisor immediately.
- Use district time, funds, and property for authorized district business and activities only.

All district employees should perform their duties in accordance with state and federal law, district policies and procedures, and ethical standards. Violation of policies, regulations, or guidelines, including intentionally making a false claim, offering false statements, or refusing to cooperate with a district investigation may result in disciplinary action, including termination. Alleged incidents of certain misconduct by educators, including having a criminal record, must be reported to SBEC not later than the seventh day after the Interim-Superintendent knew of the incident. See *Reports to the Texas Education Agency*, page 65 for additional information.

The *Educators' Code of Ethics*, adopted by the State Board for Educator Certification, which all district employees must adhere to, is reprinted below:

Texas Educators' Code of Ethics

Purpose and Scope

The Texas educator shall comply with standard practices and ethical conduct toward students, professional colleagues, school officials, parents, and members of the community and shall safeguard academic freedom. The Texas educator, in maintaining the dignity of the profession, shall respect and obey the law, demonstrate personal integrity, and exemplify honesty and good moral character. The Texas educator, in exemplifying ethical relations with colleagues, shall extend just and equitable treatment to all members of the profession. The Texas educator, in accepting a position of public trust, shall measure success by the progress of each student toward realization of his or her potential as an effective citizen. The Texas educator, in fulfilling responsibilities in the community, shall cooperate with parents and others to improve the public schools of the community. This chapter shall apply to educators and candidates for certification. (19 TAC 247.1(b))

Enforceable Standards

1. Professional Ethical Conduct, Practices, and Performance

Standard 1.1 The educator shall not intentionally, knowingly, or recklessly engage in deceptive practices regarding official policies of the school district, educational institution, educator preparation program, the Texas Education Agency, or the State Board for Educator Certification (SBEC) and its certification process.

Standard 1.2 The educator shall not intentionally knowingly or recklessly misappropriate, divert, or use monies, personnel, property, or equipment committed to his or her charge for personal gain or advantage.

Standard 1.3 The educator shall not submit fraudulent requests for reimbursement, expenses, or pay.

Standard 1.4 The educator shall not use institutional or professional privileges for personal or partisan advantage.

Standard 1.5 The educator shall neither accept nor offer gratuities, gifts, or favors that impair professional judgment or to obtain special advantage. This standard shall not restrict the acceptance of gifts or tokens offered and accepted openly from students, parents of students, or other persons or organizations in recognition or appreciation of service.

Standard 1.6 The educator shall not falsify records, or direct or coerce others to do so.

Standard 1.7 The educator shall comply with state regulations, written local school board policies, and other state and federal laws.

Standard 1.8 The educator shall apply for, accept, offer, or assign a position or a responsibility on the basis of professional qualifications.

Standard 1.9 The educator shall not make threats of violence against school district employees, school board members, students, or parents of students.

Standard 1.10 The educator shall be of good moral character and be worthy to instruct or supervise the youth of this state.

Standard 1.11 The educator shall not intentionally or knowingly misrepresent his or her employment history, criminal history, and/or disciplinary record when applying for subsequent employment.

Standard 1.12 The educator shall refrain from the illegal use, abuse or distribution of controlled substances, prescription drugs and toxic inhalants.

Standard 1.13 The educator shall not consume alcoholic beverages on school property or during school activities when students are present.

2. Ethical Conduct toward Professional Colleagues

Standard 2.1 The educator shall not reveal confidential health or personnel information concerning colleagues unless disclosure serves lawful professional purposes or is required by law.

Standard 2.2 The educator shall not harm others by knowingly making false statements about a colleague or the school system.

Standard 2.3 The educator shall adhere to written local school board policies and state and federal laws regarding the hiring, evaluation, and dismissal of personnel.

Standard 2.4 The educator shall not interfere with a colleague's exercise of political, professional, or citizenship rights and responsibilities.

Standard 2.5 The educator shall not discriminate against or coerce a colleague on the basis of race, color, religion, national origin, age, gender, disability, family status, or sexual orientation.

Standard 2.6 The educator shall not use coercive means or promise of special treatment in order to influence professional decisions or colleagues.

Standard 2.7 The educator shall not retaliate against any individual who has filed a complaint with the SBEC or provides information for a disciplinary investigation or proceeding under this chapter.

Standard 2.8 The educator shall not intentionally or knowingly subject a colleague to sexual harassment.

3. Ethical Conduct toward Students

Standard 3.1 The educator shall not reveal confidential information concerning students unless disclosure serves lawful professional purposes or is required by law.

Standard 3.2 The educator shall not intentionally, knowingly, or recklessly treat a student or minor in a manner that adversely affects or endangers the learning, physical health, mental health, or safety of the student or minor.

Standard 3.3 The educator shall not intentionally, knowingly, or recklessly misrepresent facts regarding a student.

Standard 3.4 The educator shall not exclude a student from participation in a program, deny benefits to a student, or grant an advantage to a student on the basis of race, color, gender, disability, national origin, religion, family status, or sexual orientation.

Standard 3.5 The educator shall not intentionally, knowingly, or recklessly engage in physical mistreatment, neglect, or abuse of a student or minor.

Standard 3.6 The educator shall not solicit or engage in sexual conduct or a romantic relationship with a student or minor.

Standard 3.7 The educator shall not furnish alcohol or illegal/unauthorized drugs to any person under 21 years of age unless the educator is a parent or guardian of that child or knowingly allow any person under 21 years of age unless the educator is a parent or guardian of that child to consume alcohol or illegal/unauthorized drugs in the presence of the educator.

Standard 3.8 The educator shall maintain appropriate professional educator-student relationships and boundaries based on a reasonably prudent educator standard.

Standard 3.9 The educator shall refrain from inappropriate communication with a student or minor, including, but not limited to, electronic communication such as cell phone, text messaging, email, instant messaging, blogging, or other social network communication. Factors that may be considered in assessing whether the communication is inappropriate include, but are not limited to:

- (i) the nature, purpose, timing, and amount of the communication;
- (ii) the subject matter of the communication;
- (iii) whether the communication was made openly or the educator attempted to conceal the communication;
- (iv) (iv) whether the communication could be reasonably interpreted as soliciting sexual contact or a romantic relationship;
- (v) whether the communication was sexually explicit; and
- (vi) whether the communication involved discussion(s) of the physical or sexual attractiveness or the sexual history, activities, preferences, or fantasies of either the educator or the student.

Discrimination, Harassment, and Retaliation

Policies DH, DIA

Employees shall not engage in prohibited harassment, including sexual harassment, of other employees or students. While acting in the course of their employment, employees shall not engage in prohibited harassment of other persons including board members, vendors, contractors, volunteers, or parents. A substantiated charge of harassment will result in disciplinary action.

Individuals who believe they have been discriminated or retaliated against or harassed are encouraged to promptly report such incidents to the campus principal, supervisor, or appropriate district official. If the campus principal, supervisor, or district official is the subject of a complaint, the complaint should be made directly to the Interim-Superintendent. A complaint against the Interim-Superintendent may be made directly to the board.

Any district employee who believes that he or she has experienced prohibited conduct based on sex, including sexual harassment, or believes that another employee has experienced such prohibited conduct, should immediately report the alleged acts. The employee may report the alleged acts to his or her supervisor, the campus principal, the Title IX Coordinator, or the Interim-Superintendent. The district's Title IX coordinator's name and contact information is listed in the Equal Employment Opportunity section of this handbook.

The district's policy that includes definitions and procedures for reporting and investigating discrimination, harassment, and retaliation can be found on the district's webpage under Board of Education, Policy, Policy DIA Local.

Harassment of Students

Policies DF, DH, FFG, FFH

Sexual and other harassment of students by employees are forms of discrimination and are prohibited by law. Romantic or inappropriate social relationships between students and district employees are prohibited.

Employees who suspect a student may have experienced prohibited harassment are obligated to report their concerns to the campus principal or other appropriate district official. Any district employee who suspects or receives direct or indirect notice that a student or group of students has or may have experienced prohibited conduct based on sex, including sexual harassment, of a student shall immediately notify the district's Title IX coordinator, the ADA/Section 504 coordinator, or Superintendent and take any other steps required by district policy.

All allegations of prohibited harassment of a student by an employee or adult will be reported to the student's parents and promptly investigated. An employee who knows of or has reasonable cause to believe that child abuse or neglect occurred must also report his or her knowledge or suspicion to the appropriate authorities, as required by law. See *Reporting Suspected Child Abuse and Bullying*, page 45 for additional information.

Access the district's policy that includes definitions and procedures for reporting and investigating harassment of students at:

Reporting Suspected Child Abuse

Policies DG, GRA

All employees with reasonable cause to believe that a child's physical or mental health or welfare has been adversely affected by abuse or neglect, as defined by Texas Family Code §261.001, are required by state law to make a report to a law enforcement agency, Child Protective Services CPS, or appropriate state agency (e.g., state agency operating, licensing, certifying, or registering a facility) within 48 hours of the event that led to the suspicion. Alleged abuse or neglect involving a person responsible for the care, custody, or welfare of the child (including a teacher) must be reported to CPS. Abuse is defined by SBEC and includes the following acts or omissions:

- Mental or emotional injury to a student or minor that results in an observable and material impairment in the student's or minor's development, learning, or psychological functioning;
- Causing or permitting a student or minor to be in a situation in which the student or minor sustains a mental or emotional injury that results in an observable and material impairment in the student's or minor's development, learning, or psychological functioning;
- Physical injury that results in substantial harm to a student or minor, or the genuine threat of substantial harm from physical injury to the student or minor, including an injury that is at variance with the history or explanation given and excluding an accident or reasonable discipline; or
- Sexual conduct harmful to a student's or minor's mental, emotional, or physical welfare.

Employees are also required to make a report if they have reasonable cause to believe that an adult was a victim of abuse or neglect as a child and they determine in good faith that the disclosure of the information is necessary to protect the health and safety of another child, elderly person or person with

a disability.

Reports to Child Protective Services can be made online at <https://www.txabusehotline.org/Login/Default.aspx> or to a local office or to the Texas Abuse Hotline (800-252-5400). State law specifies that an employee may not delegate to or rely on another person to make the report.

Under state law, any person reporting or assisting in the investigation of reported child abuse or neglect is immune from liability unless the report is made in bad faith or with malicious intent. In addition, the district is prohibited from retaliating against an employee who, in good faith, reports child abuse or neglect or who participates in an investigation regarding an allegation of child abuse or neglect.

An employee's failure to make the required report may result in prosecution as a Class A misdemeanor. The offense of failure to report by a professional may be a state jail felony if it is shown the individual intended to conceal the abuse or neglect. In addition, a certified employee's failure to report suspected child abuse may result in disciplinary procedures by SBEC for a violation of the Texas Educators' Code of Ethics.

Employees who suspect that a student has been or may be abused or neglected should also report their concerns to the campus principal. This includes students with disabilities who are no longer minors. Employees are not required to report their concern to the principal before making a report to the appropriate agency.

Reporting the concern to the principal does not relieve the employee of the requirement to report it to the appropriate state agency. In addition, employees must cooperate with investigators of child abuse and neglect. Interference with a child abuse investigation by denying an interviewer's request to interview a student at school or requiring the presence of a parent or school administrator against the desires of the duly authorized investigator is prohibited.

Sexual Abuse and Maltreatment of Children

The district has established a plan for addressing sexual abuse and other maltreatment of children, which may be accessed at: <http://www.childwelfare.gov/can/types/sexualabuse/signs.cfm>. As an employee, it is important for you to be aware of warning signs that could indicate a child may have been or is being sexually abused or maltreated. Sexual abuse in the Texas Family Code is defined as any sexual conduct harmful to a child's mental, emotional, or physical welfare as well as a failure to make a reasonable effort to prevent sexual conduct with a child. Maltreatment is defined as abuse or neglect. Anyone who has reasonable cause to believe that a child has been or may be abused or neglected has a legal responsibility under state law for reporting the suspected abuse or neglect following the procedures described above in *Reporting Suspected Child Abuse*.

Reporting Crime

Policy DG

The Texas Whistleblower Act protects district employees who make good faith reports of violations of law by the district to an appropriate law enforcement authority. The district is prohibited from suspending, terminating the employment of or taking other adverse personnel action against an employee who makes a report under the Act. State law also provides employees with the right to report a crime witnessed at the school to any peace officer with authority to investigate the crime.

Scope and Sequence

Policy DG

If a teacher determines that students need more or less time in a specific area to demonstrate proficiency in the Texas Essential Knowledge and Skills (TEKS) for that subject and grade level, the district will not penalize the teacher for not following the district's scope and sequence.

The district may take appropriate action if a teacher does not follow the district's scope and sequence based on documented evidence of a deficiency in classroom instruction. This documentation can be obtained through observation or substantiated and documented third-party information

Technology Resources

Policy CQ

The district's technology resources, including its networks, computer systems, e-mail accounts, devices connected to its networks, and all district-owned devices used on or off school property, are primarily for administrative and instructional purposes. Limited personal use is permitted if the use:

- Imposes no tangible cost to the district
- Does not unduly burden the district's computer or network resources
- Has no adverse effect on job performance or on a student's academic performance

Electronic mail transmissions and other use of the technology resources are not confidential and can be monitored at any time to ensure appropriate use.

Employees' usage of technology equipment for personal use especially when having direct interaction with or supervision of students is to be limited to emergencies or as approved by the supervisor.

Employees are required to abide by the provisions of the acceptable use agreement and administrative procedures. Failure to do so can result in suspension of access or termination of privileges and may lead to disciplinary and legal action. Employees with questions about computer use and data management can contact the Technology Director.

Personal Use of Electronic Media

Policies CQ, DH

Electronic media includes all forms of social media, such as text messaging, instant messaging, electronic mail (e-mail), web logs (blogs), wikis, electronic forums (chat rooms), video-sharing websites (e.g., YouTube), editorial comments posted on the Internet, and social network sites (e.g., Facebook, Twitter, LinkedIn, Instagram). Electronic media also includes all forms of telecommunication such as landlines, cell phones, and web-based applications.

As role models for the district's students, employees are responsible for their public conduct even when they are not acting as district employees. Employees will be held to the same professional standards in their public use of electronic media as they are for any other public conduct. If an employee's use of electronic media interferes with the employee's ability to effectively perform his or her job duties, the employee is subject to disciplinary action, up to and including termination of employment. If an employee wishes to use a social network site or similar media for personal purposes,

the employee is responsible for the content on the employee's page, including content added by the employee, the employee's friends, or members of the public who can access the employee's page, and for web links on the employee's page. The employee is also responsible for maintaining privacy settings appropriate to the content.

An employee who uses electronic media for personal purposes shall observe the following:

- The employee may not set up or update the employee's personal social network page(s) using the district's computers, network, or equipment.
- The employee shall limit use of personal electronic communication devices to send or receive calls, text messages, pictures, and videos to breaks, meal times, and before and after scheduled work hours; unless there is an emergency or the use is authorized by a supervisor to conduct district business.
- The employee shall not use the district's logo or other copyrighted material of the district without express, written consent.
- An employee may not share or post, in any format, information, videos, or pictures obtained while on duty or on district business unless the employee first obtains written approval from the employee's immediate supervisor. Employees should be cognizant that they have access to information and images that if transmitted to the public, could violate privacy concerns.
- The employee continues to be subject to applicable state and federal laws, local policies, administrative regulations, and the Texas Educators' Code of Ethics, even when communicating regarding personal and private matters, regardless of whether the employee is using private or public equipment, on or off campus. These restrictions include:
 - Confidentiality of student records. [See Policy FL]
 - Confidentiality of health or personnel information concerning colleagues, unless disclosure serves lawful professional purposes or is required by law. [See DH (EXHIBIT)]
 - Confidentiality of district records, including educator evaluations and private e-mail addresses. [See Policy GBA]
 - Copyright law [See Policy CY]
 - Prohibition against harming others by knowingly making false statements about a colleague or the school system. [See DH (EXHIBIT)]

Electronic Communication between Employees, Students and Parents

Policy DH

A certified or licensed employee, or any other employee designated in writing by the Interim-Superintendent or a campus principal, may use electronic communications with students who are currently enrolled in the district. The employee must comply with the provisions outlined below. Electronic communications between all other employees and students who are enrolled in the district are prohibited.

Employees are not required to provide students with their personal phone number or e-mail address.

An employee is not subject to provisions regarding electronic communications with a student to the extent the employee has a social or family relationship with a student. For example, an employee may have a relationship with a niece or nephew, a student who is the child of an adult friend, a student who is a friend of the employee's child, or a member or participant in the same civic, social, recreational, or

religious organization. An employee who claims an exception based on a social relationship shall provide written consent from the student's parent. The written consent shall include an acknowledgement by the parent that:

- The employee has provided the parent with a copy of this protocol
- The employee and the student have a social relationship outside of school;
- The parent understands that the employee's communication with the student are excepted from district regulation; and
- The parent is solely responsible for monitoring electronic communications between the employee and the student.

The following definitions apply for the use of electronic media with students:

- *Electronic communications* means any communication facilitated by the use of any electronic device, including a telephone, cellular telephone, computer, computer network, personal data assistant, or pager. The term includes e-mail, text messages, instant messages, and any communication made through an Internet website, including a social media website or a social networking website.
- *Communicate* means to convey information and includes a one-way communication as well as a dialogue between two or more people. A public communication by an employee that is not targeted at students (e.g., a posting on the employee's personal social network page or a blog) is not a *communication*; however, the employee may be subject to district regulations on personal electronic communications. See *Personal Use of Electronic Media*, above. Unsolicited contact from a student through electronic means is not a *communication*.
- *Certified or licensed employee* means a person employed in a position requiring SBEC certification or a professional license, and whose job duties may require the employee to communicate electronically with students. The term includes classroom teachers, counselors, principals, librarians, paraprofessionals, nurses, educational diagnosticians, licensed therapists, and athletic trainers.

An employee who communicates electronically with students shall observe the following:

- The employee is prohibited from knowingly communicating with students using any form of electronic communications, including mobile and web applications, that are not provided or accessible by the district unless a specific exception is noted below.
- Only a teacher, trainer, or other employee who has an extracurricular duty may use text messaging, and then only to communicate with students who participate in the extracurricular activity over which the employee has responsibility. An employee who communicates with a student using text messaging shall comply with the following protocol:
 - The employee shall include at least one of the student's parents or guardians as a recipient on each text message to the student so that the student and parent receive the same message.
 - Or, the employee shall include his or her immediate supervisor as a recipient so that the student and supervisor receive the same message.
- The employee shall limit communications to matters within the scope of the employee's professional responsibilities (e.g., for classroom teachers, matters relating to class work, homework, and tests; for an employee with an extracurricular duty, matters relating to the extracurricular activity).

- The employee is prohibited from knowingly communicating with students through a personal social network page; the employee must create a separate social network page (“professional page”) for the purpose of communicating with students. The employee must enable administration and parents to access the employee’s professional page.
- The employee shall not communicate directly with any student between the hours of 10 p.m. and 7 a.m. An employee may, however, make public posts to a social network site, blog, or similar application at any time.
- The employee does not have a right to privacy with respect to communications with students and parents.
- The employee continues to be subject to applicable state and federal laws, local policies, administrative regulations, and the Texas Educators’ Code of Ethics including:
 - Compliance with the Public Information Act and the Family Educational Rights and Privacy Act (FERPA), including retention and confidentiality of student records. [See Policies CPC and FL]
 - Copyright law [Policy CY]
 - Prohibitions against soliciting or engaging in sexual conduct or a romantic relationship with a student. [See Policy DF]
- Upon request from administration, an employee will provide the phone number(s), social network site(s), or other information regarding the method(s) of electronic media the employee uses to communicate with one or more currently-enrolled students.
- Upon written request from a parent or student, the employee shall discontinue communicating with the student through e-mail, text messaging, instant messaging, or any other form of one-to-one communication.
- An employee may request an exception from one or more of the limitations above by submitting a written request to his or her immediate supervisor.
- An employee shall notify his or her supervisor in writing within one business day if a student engages in an improper electronic communication with the employee. The employee should describe the form and content of the electronic communication.

Public Information on Private Devices

Policy DH

Employees should not maintain district information on privately owned devices. Any district information must be forwarded or transferred to the district to be preserved. The district will take reasonable efforts to obtain public information in compliance with the Public Information Act. Reasonable efforts may include:

- Verbal or written directive
- Remote access to district-owned devices and services

Criminal History Background Checks

Policy DBAA

Employees may be subject to a review of their criminal history record information at any time during employment. National criminal history checks based on an individual’s fingerprints, photo, and other identification will be conducted on certain employees and entered into the Texas Department of Public Safety (DPS) Clearinghouse. This database provides the district and SBEC with access to an

employee's current national criminal history and updates to the employee's subsequent criminal history.

Employee Arrests and Convictions

Policy DH

An employee must notify his or her principal or immediate supervisor within three calendar days of any arrest, indictment, conviction, no contest or guilty plea, or other adjudication of any felony, and any of the other offenses listed below:

- Crimes involving school property or funds
- Crimes involving attempt by fraudulent or unauthorized means to obtain or alter any certificate or permit that would entitle any person to hold or obtain a position as an educator
- Crimes that occur wholly or in part on school property or at a school-sponsored activity
- Crimes involving moral turpitude

Moral turpitude includes the following:

- Dishonesty
- Fraud
- Deceit
- Theft
- Misrepresentation
- Deliberate violence
- Base, vile, or depraved acts that are intended to arouse or gratify the sexual desire of the actor
- Crimes involving any felony possession or conspiracy to possess, or any misdemeanor or felony transfer, sale, distribution, or conspiracy to transfer, sell, or distribute any controlled substance
- Felonies involving driving while intoxicated (DWI)
- Acts constituting abuse or neglect under the Texas Family Code

If an educator is arrested or criminally charged, the Interim-Superintendent is also required to report the educators' criminal history to the Division of Investigations at TEA.

Alcohol and Drug-Abuse Prevention

Policy DH

LPISD is committed to maintaining an alcohol- and drug-free environment and will not tolerate the use of alcohol and illegal drugs in the workplace and at school-related or school-sanctioned activities on or off school property. Employees who use or are under the influence of alcohol or illegal drugs as defined by the Texas Controlled Substances Act during working hours may be dismissed. The district's policy regarding employee drug use follows:

[http://www.tasb.org/policy/pol/private/027903/pol.cfm?DisplayPage=DH\(LOCAL\).pdf](http://www.tasb.org/policy/pol/private/027903/pol.cfm?DisplayPage=DH(LOCAL).pdf)

[http://www.tasb.org/policy/pol/private/027903/pol.cfm?DisplayPage=DI\(XHIBIT\).pdf](http://www.tasb.org/policy/pol/private/027903/pol.cfm?DisplayPage=DI(XHIBIT).pdf)

Tobacco Products and E-Cigarette Use

Policies DH, FNCD GKA

State law prohibits smoking, using tobacco products, or e-cigarettes on all district-owned property and at school-related or school-sanctioned activities, on or off school property. This includes all buildings, playground areas, parking facilities, and facilities used for athletics and other activities. Drivers of district-owned vehicles are prohibited from smoking, using tobacco products or e-cigarettes while inside the vehicle. Notices stating that use of tobacco is prohibited by law and punishable by a fine are displayed in prominent places in all school buildings.

Fraud and Financial Impropriety

Policy CAA

All employees should act with integrity and diligence in duties involving the district's financial resources. The district prohibits fraud and financial impropriety, as defined below. Fraud and financial impropriety include the following:

- Forgery or unauthorized alteration of any document or account belonging to the district
- Forgery or unauthorized alteration of a check, bank draft, or any other financial document
- Misappropriation of funds, securities, supplies, or other district assets including employee time
- Impropriety in the handling of money or reporting of district financial transactions
- Profiteering as a result of insider knowledge of district information or activities
- Unauthorized disclosure of confidential or proprietary information to outside parties
- Unauthorized disclosure of investment activities engaged in or contemplated by the district
- Accepting or seeking anything of material value from contractors, vendors, or other persons providing services or materials to the district, except as otherwise permitted by law or district policy
- Inappropriately destroying, removing, or inappropriately using records, furniture, fixtures, or equipment
- Failing to provide financial records required by state or local entities
- Failure to disclose conflicts of interest as required by policy
- Any other dishonest act regarding the finances of the district
- Failure to comply with requirements imposed by law, the awarding agency, or a pass-through entity for state and federal awards

Conflict of Interest

Policy DBD

Employees are required to disclose in writing to the District any situation that creates a potential conflict of interest with proper discharge of assigned duties and responsibilities or creates a potential conflict of interest with the best interests of the district. This includes the following:

- A personal financial interest
- A business interest
- Any other obligation or relationship
- Non-school employment

Employees should contact their supervisor for additional information.

Gifts and Favors

Policy DBD

Employees may not accept gifts or favors that could influence, or be construed to influence, the employee's discharge of assigned duties. The acceptance of a gift, favor, or service by an administrator or teacher that might reasonably tend to influence the selection of textbooks, electronic textbooks, instructional materials or technological equipment may result in prosecution of a Class B misdemeanor offense. This does not include staff development, teacher training, or instructional materials such as maps or worksheets that convey information to students or contribute to the learning process.

Copyrighted Materials

Policy CY

Employees are expected to comply with the provisions of federal copyright law relating to the unauthorized use, reproduction, distribution, performance, or display of copyrighted materials (i.e., printed material, videos, computer data and programs, etc.). Electronic media, including motion pictures and other audiovisual works, are to be used in the classroom for instructional purposes only. Duplication or backup of computer programs and data must be made within the provisions of the purchase agreement.

Associations and Political Activities

Policy DGA

The district will not directly or indirectly discourage employees from participating in political affairs or require any employee to join any group, club, committee, organization, or association. Employees may join or refuse to join any professional association or organization.

An individual's employment will not be affected by membership or a decision not to be a member of any employee organization that exists for the purpose of dealing with employers concerning grievances, labor disputes, wages, rates of pay, hours of employment, or conditions of work. Use of district resources including work time for political activities is prohibited.

The district encourages personal participation in the political process, including voting. Employees who need to be absent from work to vote during the early voting period or on election day must communicate with their immediate supervisor prior to the absence.

Charitable Contributions

Policy DG

The Board or any employee may not directly or indirectly require or coerce an employee to make a contribution to a charitable organization or in response to a fund-raiser. Employees cannot be required to attend a meeting called for the purpose of soliciting charitable contributions. In addition, the Board or any employee may not directly or indirectly require or coerce an employee to refrain from making a contribution to a charitable organization or in response to a fund raiser or attending a meeting called for the purpose of soliciting charitable contributions.

Safety

Policy CK series

The district has developed and promotes a comprehensive program to ensure the safety of its employees, students, and visitors. The safety program includes guidelines and procedures for responding to emergencies and activities to help reduce the frequency of accidents and injuries. To prevent or minimize injuries to employees, coworkers, and students and to protect and conserve district equipment, employees must comply with the following requirements:

- Observe all safety rules.
- Keep work areas clean and orderly at all times.
- Immediately report all accidents to their supervisor.
- Operate only equipment or machines for which they have training and authorization.

While driving on district business, employees are required to abide by all state and local traffic laws. Employees driving on district business are prohibited from texting and using other electronic devices that require both visual and manual attention while the vehicle is in motion. Employees will exercise care and sound judgment on whether to use hands-free technology while the vehicle is in motion.

Employees with questions or concerns relating to safety programs and issues can contact the Business Office.

Possession of Firearms and Weapons

Policies FNCG, GKA

Employees, visitors, and students, including those with a license to carry a handgun, are prohibited from bringing firearms, knives, clubs, or other prohibited weapons onto school premises (i.e., building or portion of a building) or any grounds or building where a school-sponsored activity takes place. A person, including an employee, who holds a license to carry a handgun may transport or store a handgun or other firearm or ammunition in a locked vehicle in a parking lot, garage, or other district provided parking area, provided the handgun or firearm or ammunition is properly stored, and not in plain view. To ensure the safety of all persons, employees who observe or suspect a violation of the district's weapons policy should report it to their supervisor or call the Interim-Superintendent's office immediately.

Visitors in the Workplace

Policy GKC

All visitors are expected to enter any district facility through the main entrance and sign in or report to the building's main office. Authorized visitors will receive directions or be escorted to their destination. Employees who observe an unauthorized individual on the district premises should immediately direct him or her to the building office or contact the administrator in charge.

Asbestos Management Plan

Policy CKA

The district is committed to providing a safe environment for employees. An accredited management planner has developed an asbestos management plan for each school. A copy of the district's management plan is kept in the facility director's office and is available for inspection during normal business hours.

Pest Control Treatment

Policies CLB, DI

Employees are prohibited from applying any pesticide or herbicide without appropriate training and prior approval of the integrated pest management (IPM) coordinator. Any application of pesticide or herbicide must be done in a manner prescribed by law and the district's integrated pest management program.

Notices of planned pest control treatment will be posted in a district building 48 hours before the treatment begins. In addition, individual employees may request in writing to be notified of pesticide applications. An employee who requests individualized notice will be notified by telephone, written or electronic means. Pest control information sheets are available from campus principals or facility managers upon request.

Other Topics

District Dress Code

All staff members are required to dress professionally at all times including summer assignments and professional development days. Jeans and T-shirts may be worn on spirit days and other days designated by the campus principal only (such as college days, field trips, etc.). Flip flops (flat, with toe strap), shorts, and sweat/wind pants are not considered professional dress. Other open-toed shoes are allowed, but discouraged for your safety. Should lessons or special circumstances call for a variance on dress code, please see principal for approval (such as Life Skills classroom workers, messy lab/experiments, etc.).

As professionals, school personnel must be aware that actions and appearances set the example for others. As a general guide, if students are restricted by the LPISD dress code, teachers and staff will adhere to the same restrictions.

Uniform attire will be required of the following departments: maintenance, custodial, and food service. The clothing will be required as part of the daily wear.

General Procedures

Emergency School Closing

The district may close schools because of severe weather, epidemics, or other emergency conditions. When such conditions exist, the Interim-Superintendent will make the official decision concerning the closing of the district's facilities. For employees, each campus or department has a calling tree to notify employees of the decision to close schools. The district School Messenger Calling System may be used to notify all students and employees affected by the closures. Listen to the local radio

stations (104.9) for school closing information. You may also monitor the San Antonio T.V. stations and the district website (www.lapryor.net) for this information.

Emergencies

Policies CKC, CKD

All employees should be familiar with the safety procedures for responding to a emergencies, including a medical emergency. Employees should locate evacuation diagrams posted in their work areas and be familiar with shelter in place, lockout and lockdown procedures. Emergency drills will be conducted to familiarize employees and students with safety and evacuation procedures. Each campus is equipped with an automatic external defibrillator. Fire extinguishers are located throughout all district buildings. Employees should know the location of these devices and procedures for their use.

Purchasing Procedures

Policy CH

All requests for purchases must be submitted to the Business Office on an official district purchase order (PO) form with the appropriate approval signatures. No purchases, charges, or commitments to buy goods or services for the district can be made without a PO number. The district will not reimburse employees or assume responsibility for purchases made without authorization. Employees are not permitted to purchase supplies or equipment for personal use through the Business Office. Contact the Business Office for additional information on purchasing procedures.

Name and Address Changes

It is important that employment records be kept up to date. Employees must notify the Human Resources department if there are any changes or corrections to their name, home address, contact telephone number, marital status, emergency contact, or beneficiary. The form to process a change in personal information can be obtained from Human Resources.

Personnel Records

Policy DBA

Most district records, including personnel records, are public information and must be released upon request. Employees may choose to have the following personal information withheld:

- Address
- Phone number, including personal cell phone number
- Emergency contact information
- Information that reveals whether they have family members
- Personal e-mail address

The choice to not allow public access to this information may be made at any time by submitting a written request to Human Resources. New or terminated employees have 14 days after hire or termination to submit a request. Otherwise, personal information will be released to the public.

Facility Use

Employees who wish to use district facilities after school hours must follow established procedures. The Facilities Department is responsible for scheduling the use of facilities after school hours. Contact the Facilities Department to request to use school facilities and to obtain information on the fees charged.

Use of Personal Electronic Devices including Cellular Telephones by Staff

All staff members, including substitute should limit personal calls and text messaging during the work day. Staff members should not interrupt instruction with cell phone usage. Cell phones should be on silent or meeting mode in instructional areas (inside all school buildings) and in meetings. Generally, staff members should not hold cell phone conversations or send or receive text meetings in front of students except in an emergency situation. For extenuating circumstances that require access to a cell phone during the day, staff members should notify his/her supervisor/campus principal.

It is against the law in Texas for the drivers of vehicles transporting students to use cell phones except in an emergency situation. In an emergency, the driver should pull off the road to make a telephone call. **This includes the transportation of students in school suburban's or pickups.**

Staff members do not have the authority to use confiscated student cell phones or to read messages, check for calls, or search a student phone in any way.

Avoid allowing student access to personal cell phones if at all possible.

School Keys

Staff members are issued keys to facilities as appropriate for their assignment. Under no circumstance should a staff member lend his or her keys to anyone who is not under his or her direct supervision.

Termination of Employment

Resignations

Policy DFE, DHB

Contract Employees. Contract employees may resign their position without penalty at the end of any school year if written notice is received at least 45 days before the first day of instruction of the following school year. A written notice of resignation should be submitted to the Interim-Superintendent or designee. Contract employees may resign at any other time only with the approval of the Interim-Superintendent or the board of trustees. Resignation without consent may result in disciplinary action by the State Board for Educator Certification (SBEC).

The principal is required to notify the Interim-Superintendent of an educator's resignation within seven business days following an alleged incident of misconduct for any of the listed in Reports to Texas Education Agency on page 65. The Interim-Superintendent will notify SBEC when an employee resigns and there is evidence to indicate that the employee has engaged in such misconduct.

Noncontract Employees. Noncontract employees may resign their position at any time. A written notice of resignation should be submitted to the Interim-Superintendent or designee at least two weeks prior to the effective date. Employees are encouraged to include the reasons for leaving in the letter of resignation but are not required to do so.

The principal is required to notify the Interim-Superintendent of a noncertified employee's resignation or termination within seven business days following an alleged incident of misconduct of abuse of a student, or was involved in a romantic relationship with or solicited or engaged in sexual conduct with a student or minor. The Interim-Superintendent will notify TEA within seven business days of receiving a report from a principal, or of knowing about an employee's resignation or termination following an alleged incident of misconduct described above.

Dismissal or Nonrenewal of Contract Employees

Policies DFAA, DFAB, DFBA, DFBB, DFD, DFF, DFFA, DFFB, DFFC

Employees on probationary and term can be dismissed during the school year according to the procedures outlined in district policies. Employees on probationary or term contracts can be non-renewed at the end of the contract term. Contract employees dismissed during the school year, suspended without pay, or subject to a reduction in force are entitled to receive notice of the recommended action, an explanation of the charges against them, and an opportunity for a hearing. The time lines and procedures to be followed when a suspension, termination, or nonrenewal occurs will be provided when a written notice is given to an employee. Advance notification requirements do not apply when a contract employee is dismissed for failing to obtain or maintain appropriate certification or when the employee's certification is revoked for misconduct. Information on the time lines and procedures can be found in the DF series policies that are provided to employees or are available on line.

The principal is required to notify the Interim-Superintendent of an educator's termination within seven business days following an alleged incident of misconduct for any of the acts listed in Reports to Texas Education Agency. The Interim-Superintendent will notify SBEC when an employee is terminated and there is evidence to indicate that the employee has engaged in such misconduct.

Dismissal of Noncontract Employees

Policies DCD, DP

Noncontract employees are employed at will and may be dismissed without notice, a description of the reasons for dismissal, or a hearing. It is unlawful for the district to dismiss any employee for reasons of race, color, religion, sex, national origin, age, disability, military status, genetic information, any other basis protected by law, or in retaliation for the exercise of certain

protected legal rights. Noncontract employees who are dismissed have the right to grieve the termination. The dismissed employee must follow the district process outlined in this handbook when pursuing the grievance. (See *Complaints and Grievances*, page 26.)

The principal is required to notify the Interim-Superintendent of a noncertified employee's resignation or termination within seven business days following an alleged incident of misconduct of abuse of a student, or was involved in a romantic relationship with or solicited or engaged in sexual conduct with a student or minor. The Interim-Superintendent will notify TEA within seven business days of receiving a report from a principal, or of knowing about an employee's resignation or termination following an alleged incident of misconduct described above.

Discharge of Convicted Employees

Policy DF

The district shall discharge any employee who has been convicted of or placed on deferred adjudication community supervision for an offense requiring the registration as a sex offender or convicted of a felony under Title 5 Penal Code if the victim was a minor.

If the offense is more than 30 years before the date of the person's employment began or the person satisfied all terms of the court order entered on conviction the requirement to discharge does not apply.

Exit Interviews and Procedures

Policies DC and CY

Exit interviews will be scheduled for all employees leaving the district. Information on the continuation of benefits, release of information, and procedures for requesting references will be provided at this time. Separating employees are asked to provide the district with a forwarding address and phone number and complete a questionnaire that provides the district with feedback on his or her employment experience. All district keys, books, property including intellectual property, and equipment must be returned upon separation from employment.

Reports to Texas Education Agency

Policies DF, DHB, DHC

Certified Employees. The resignation or termination of a certified employee must be reported to the Division of Investigations at TEA whenever the termination is based on evidence that the employee was involved in any of the following:

- Any form of sexual or physical abuse of a minor or any other unlawful conduct with a student or a minor
- Soliciting or engaging in sexual conduct or a romantic relationship with a student or minor
- The possession, transfer, sale, or distribution of a controlled substance
- The illegal transfer, appropriation, or expenditure of district property or funds
- An attempt by fraudulent or unauthorized means to obtain or alter any certificate or permit for the purpose of promotion or additional compensation
- Committing a criminal offense or any part of a criminal offense on district property or at a school-sponsored event

The reporting requirements above are in addition to the Interim-Superintendent's ongoing duty to notify TEA when a certified employee or an applicant for certification has a reported criminal history or engaged in conduct violating the assessment security procedures established under TEC 39.0301. "Reported criminal history" means any formal criminal justice system charges and dispositions including arrests, detentions, indictments, criminal information, convictions, deferred adjudications, and probations in any state or federal jurisdiction that is obtained by means other than the Fingerprint-based Applicant Clearinghouse of Texas (FACT).

Noncertified Employees. The voluntary or involuntary separation of a noncertified employee from the District must be reported to the Division of Investigations at TEA by the Interim-Superintendent if there is evidence the employee abused or otherwise committed an unlawful act with a student or minor, was involved in a romantic relationship with a student or minor, or solicited or engaged in sexual contact with a student or minor.

Reports Concerning Court-Ordered Withholding

The district is required to report the termination of employees that are under court order or writ of withholding for child support or spousal maintenance to the court and the individual receiving the support (Texas Family Code §8.210, 158.211). Notice of the following must be sent to the court and support recipient:

- Termination of employment not later than the seventh day after the date of termination
- Employee's last known address
- Name and address of the employee's new employer, if known

Student Issues

Equal Educational Opportunities

Policies FB, FFH

In an effort to promote nondiscrimination and as required by law, La Pryor ISD does not discriminate on the basis of race, color, religion, national origin, age, sex, or disability in providing education services, activities, and programs, including Career and Technical Education (CTE), in accordance with Title VI of the Civil Rights Act of 1964, as amended; Title IX of the Educational Amendments of 1972; and Section 504 of the Rehabilitation Act of 1973, as amended.

Questions or concerns about discrimination of students based on any of the reasons listed above should be directed to the Interim-Superintendent, listed on page 8.

Student Records

Policy FL

Student records are confidential and are protected from unauthorized inspection or use. Employees should take precautions to maintain the confidentiality of all student records. The following people are the only people who have general access to a student's records:

- Parents: Married, separated, or divorced unless parental rights have been legally terminated and the school has been given a copy of the court order terminating parental rights
- The student: The rights of parents transfer to a student who turns 18 or is enrolled in an institution of post-secondary education. A district is not prohibited from granting the student access to the student's records before this time.
- School officials with legitimate educational interests

The student handbook provides parents and students with detailed information on student records. Parents or students who want to review student records should be directed to the campus principal for assistance.

Parent and Student Complaints

Policy FNG

In an effort to hear and resolve parent and student complaints in a timely manner and at the lowest administrative level possible, the board has adopted orderly processes for handling complaints on different issues. Any campus office or the Superintendent's office can provide parents and students with information on filing a complaint.

Parents are encouraged to discuss problems or complaints with the teacher or the appropriate administrator at any time. Parents and students with complaints that cannot be resolved to their satisfaction should be directed to the campus principal. The formal complaint process provides parents and students with an opportunity to be heard up to the highest level of management if they are dissatisfied with a principal's response.

Administering Medication to Students

Policy FFAC

Only designated employees may administer prescription medication, nonprescription medication, and herbal or dietary supplements to students. Exceptions apply to the self-administration of asthma medication, medication for anaphylaxis (e.g., EpiPen®), and medication for diabetes management, if the medication is self-administered in accordance with district policy and procedures. A student who must take any other medication during the school day must bring a written request from his or her parent and the medicine in its original, properly labeled container. Contact the principal or school nurse for information on procedures that must be followed when administering medication to students.

Dietary Supplements

Policies DH, FFAC

District employees are prohibited by state law from knowingly selling, marketing, or distributing a dietary supplement that contains performance-enhancing compounds to a student with whom the

employee has contact as part of his or her school district duties. In addition, employees may not knowingly endorse or suggest the ingestion, intranasal application, or inhalation of a performance-enhancing dietary supplement to any student.

Psychotropic Drugs

Policy FFAC

A psychotropic drug is a substance used in the diagnosis, treatment, or prevention of a disease or as a component of a medication. It is intended to have an altering effect on perception, emotion, or behavior and is commonly described as a mood- or behavior-altering substance.

District employees are prohibited by state law from doing the following:

- Recommending that a student use a psychotropic drug
- Suggesting a particular diagnosis
- Excluding from class or school-related activity a student whose parent refuses to consent to a psychiatric evaluation or to authorize the administration of a psychotropic drug to a student

Student Conduct and Discipline

Policies in the FN series and FO series

Students are expected to follow the classroom rules, campus rules, and rules listed in the Student Handbook and Student Code of Conduct. Teachers and administrators are responsible for taking disciplinary action based on a range of discipline management strategies that have been adopted by the district. Other employees that have concerns about a particular student's conduct should contact the classroom teacher or campus principal.

Student Attendance

Policy FEB

Teachers and staff should be familiar with the district's policies and procedures for attendance accounting. These procedures require minor students to have parental consent before they are allowed to leave campus. When absent from school, the student upon returning to school, must bring a note signed by the parent that describes the reason for the absence. These requirements are addressed in campus training and in the student handbook. Contact the campus principal for additional information.

Bullying

Policy FFI

Bullying is defined by TEC §37.0832. All employees are required to report student complaints of bullying, including cyber bullying, to the campus principal. The district's policy includes definitions and procedures for reporting and investigating bullying of students and is reprinted below:

[http://www.tasb.org/policy/pol/private/027903/pol.cfm?DisplayPage=FFI\(LOCAL\).pdf](http://www.tasb.org/policy/pol/private/027903/pol.cfm?DisplayPage=FFI(LOCAL).pdf)

Hazing

Policy FNCC

Students must have prior approval from the principal or designee for any type of “initiation rites” of a school club or organization. While most initiation rites are permissible, engaging in or permitting “hazing” is a criminal offense. Any teacher, administrator, or employee who observes a student engaged in any form of hazing, who has reason to know or suspect that a student intends to engage in hazing, or has engaged in hazing must report that fact or suspicion to the designated campus administrator.

Index

A

Administering medication, 48
Alcohol and drug
 abuse prevention, 38
 testing, 12
Arrests and convictions, 38
Asbestos management plan, 42
Assault leave, 26
Associations and political activities, 40
At-will employment, 11
Automatic payroll deposits, 16

B

Background checks, 37
Bad weather closing, 42
Benefits
 cafeteria plan, 18
 health insurance, 18
 leave, 20
 retirement, 19
 supplemental insurance, 18
 workers' compensation, 19
Bereavement leave, 26
Board of Trustees
 information, 5
 meeting schedule, 6
 members, 6
Breaks, 14
Breast milk, 14
Building use, 44
Bullying, 50

C

Cafeteria plan benefits, 18
Certification
 health and safety training, 12

 maintaining, 11
 parent notification, 14
Change of address, 43
Charitable contributions, 40
Child abuse
 reporting, 32
 sexual, 33
Code of ethics, 29
Committees, 15
Compensation, 16
Complaints
 employee, 28
 parent and student, 48
Compliance with a subpoena, 27
Conduct and welfare, 28
Conflict of interest, 39
Contract
 employment, 11
 noncertified employees, 11
 nonrenewal, 45
Copyright materials, 40
Court appearances, 27
Court-ordered withholding, 47
Crime reporting, 31, 33
Criminal history, 37

D

Dietary supplements, 49
Directories
 helpful contacts, 8
 school, 8
Discrimination
 employee, 10, 31
 student, 47
Dismissal
 contract employees, 45
 noncontract employees, 45

District
communications, 27
description, 5
information, 5
mission statement, 5

Dress Code, 42

Drug
abuse prevention, 38
psychotropic, 49
testing, 12

E

E-cigarettes, 39
Electronic communications, 34, 35
Emergencies, 43
Employee
conduct and welfare, 28
involvement, 15
recognition, 27
Employment
after retirement, 10
at-will, 11
contract, 11
noncontract, 11
outside, 14
Equal opportunity
educational, 47
employment, 10
Every Student Succeeds Act, 14
Exit interviews, 46

F

Facility Use, 44
Family and medical leave, 22
Firearms, 41
Fraud, 39

G

General procedures, 42

Gifts and favors, 40
Grievances, 28

H

Harassment, 31, 32
Hazing, 50
Health insurance, 18
Health safety training, 12
Helpful contacts, 8

I

Insurance
health, 18
supplemental, 18
unemployment, 19
Internet use, 34, 35, 36, 37

J

Job vacancy announcements, 10
Jury duty, 27

L

Leave
assault, 26
bereavement, 26
court appearance, 27
discretionary, 21
family and medical, 22
jury duty, 27
local, 22
medical certification, 20
military, 27
nondiscretionary, 21
personal, 21
proration, 21, 22
sick, 22
temporary disability, 25

workers' compensation, 19

M

Maltreatment of children, 33

Medications, 48

Military leave, 27

Mission statement, 5

N

Name and address changes, 43

Nonrenewals, 45

Nursing mothers, 14

O

Organizational Chart, 9

Outside employment, 14

Overtime, 17

P

Parent and student complaints, 48

Parent notification, 14

Paychecks, 16

Payroll

- automatic deposits, 16

- deductions, 17

- schedule, 16

Performance evaluation, 15

Personal leave, 21

Personnel records, 43

Pest control treatment, 42

Political activities, 40

Possession of firearms and weapons, 41

Professional Development Non-Attendance, 15

Psychotropic drugs, 49

Purchasing procedures, 43

Q

Qualifying exigency, 25

R

Reassignments, 13

Reporting Crimes, 32, 33

Resignations,

- contract employees, 44

- noncontract employees, 44, 45

Retaliation, 31

Retirement

- benefits, 19

- employment after, 10

S

Safety, 41

Salaries, 16

School

- calendar, 7

- closing, 42

- directory, 8

Searches, 12

Sexual harassment, 32

Sick leave, 22

Staff development, 15

Standards of conduct, 28

Student

- attendance, 49

- bullying, 50

- complaints, 48

- dietary supplements, 49

- discipline, 49

- equal educational opportunities, 47

- harassment, 31, 32

- hazing, 50

- medication, 48

- records, 48

Supplemental insurance, 18

Workers' compensation benefits, 19, 26
Workload, 13

T

TEA reports, 46
Teacher retirement, 19
Technology resources, 34
Termination
 dismissal during the contract term, 44
 exit interviews, 46
 noncontract employees, 45
 nonrenewal, 45
 reports to TEA, 46
 resignation, 44
Text messaging, 35
Tobacco
 products, 39
 use, 39
Training
 health and safety, 12
 staff development, 15
Transfers, 13
Travel expenses, 17
Tutoring, 14

U

Unemployment insurance, 19
Unlawful Acts, 27

V

Vacancy announcements, 10
Visitors, 41

W

Wages, 16
Weapons, 41
Whistleblower Act, 33
Work schedule, 13

La Pryor ISD Employee Handbook Receipt

Name: _____

Campus/Department: _____

I hereby acknowledge receipt of a copy of the 2022-2023 LPISD Employee Handbook. I agree to read the handbook and abide by the standards, policies, and procedures defined or referenced in this document.

Employees have the option of receiving the handbook in electronic format or hard copy.

www.lapryor.net

The information in this handbook is subject to change. I understand that changes in district policies may supersede, modify, or render obsolete the information summarized in this book. As the district provides updated policy information, I accept responsibility for reading and abiding by the changes.

I understand that no modifications to contractual relationships or alterations of at-will employment relationships are intended by this handbook.

I understand that I have an obligation to inform my supervisor or department head of any changes in personal information such as phone number, address, etc. I also accept responsibility for contacting my supervisor or Human Resources if I have questions or concerns or need further explanation.

Signature

Date

Please sign and date this receipt and forward it to your campus principal or supervisor.

