



Grade 11 & 12 Uniform Checklist

#1 Uniform

Mondays, Fridays, and Special Events

- ☐ White dress shirt (short or long-sleeved) *with school tie**
- ☐ Navy school blazer*
- ☐ Tartan kilt *with kilt pin**
- ☐ Navy knee socks *or* Navy tights
- ☐ Navy or black cartwheel shorts
- ☐ Black slip-on or velcro shoes

- *OR* -

- ☐ White dress shirt (short or long-sleeved) *with school tie**
- ☐ Navy school blazer*
- ☐ Grey dress pants *or* Grey dress shorts
- ☐ Grey socks
- ☐ Black belt *with conservative buckle*
- ☐ Black slip-on or velcro shoes

Optional #1 & #2 Items

- | | |
|--|--|
| <input type="checkbox"/> Navy or burgundy cardigan* | #1, all items worn with white dress shirt and tie |
| <input type="checkbox"/> Navy or burgundy pullover* | |
| <input type="checkbox"/> Navy or burgundy vest* | #2, worn with white dress shirt or navy golf shirt |
| <input type="checkbox"/> Grad tie (Grade 12 only)*
<i>Worn with white dress shirt</i> | |

*only available at the Meadowridge Uniform Shop

#2 Uniform

Tuesdays, Wednesday, and Thursdays

Top Options

- ☐ White dress shirt (short or long-sleeved) *with school tie**
- ☐ Navy golf shirt (short or long-sleeved)*
- ☐ Hoodie, *crested**
- ☐ Rugby shirt, *crested**
- ☐ Grad Hoodie, *crested**

Bottom Option: Kilt

- ☐ Tartan kilt *with kilt pin**
- ☐ Navy or black cartwheel shorts
- ☐ Navy knee high socks *or* Navy tights
- ☐ Black dress shoes

Bottom Option: Pants

- ☐ Grey dress pants
- ☐ Grey socks
- ☐ Black belt *with conservative buckle*
- ☐ Black dress shoes

Bottom Option: Shorts

- ☐ Grey dress shorts
- ☐ Grey socks
- ☐ Black belt *with conservative buckle*
- ☐ Black dress shoes

Spirit Merchandise

Spirit Days and Special Events



Everyone in the Meadowridge community is a member of one of our four Houses: **Alouette, Fraser, Kanaka, or Whonnock**. All students, in every grade, contribute to their House's overall total by competing in competitions and contests throughout the year.

The first House Shirt is a gift to new students. Any additional House Shirts can be purchased at the uniform shop.



Our Mascot, Gryph

At Meadowridge School, the Gryphon defends our students while remaining a symbol of the many virtues to which we aspire: gentleness, nobility, vigilance, strength, and enlightenment. Its likeness secures, inspires, and protects us.

You will often see Gryph visit during our Spirit Days and special events at the school.

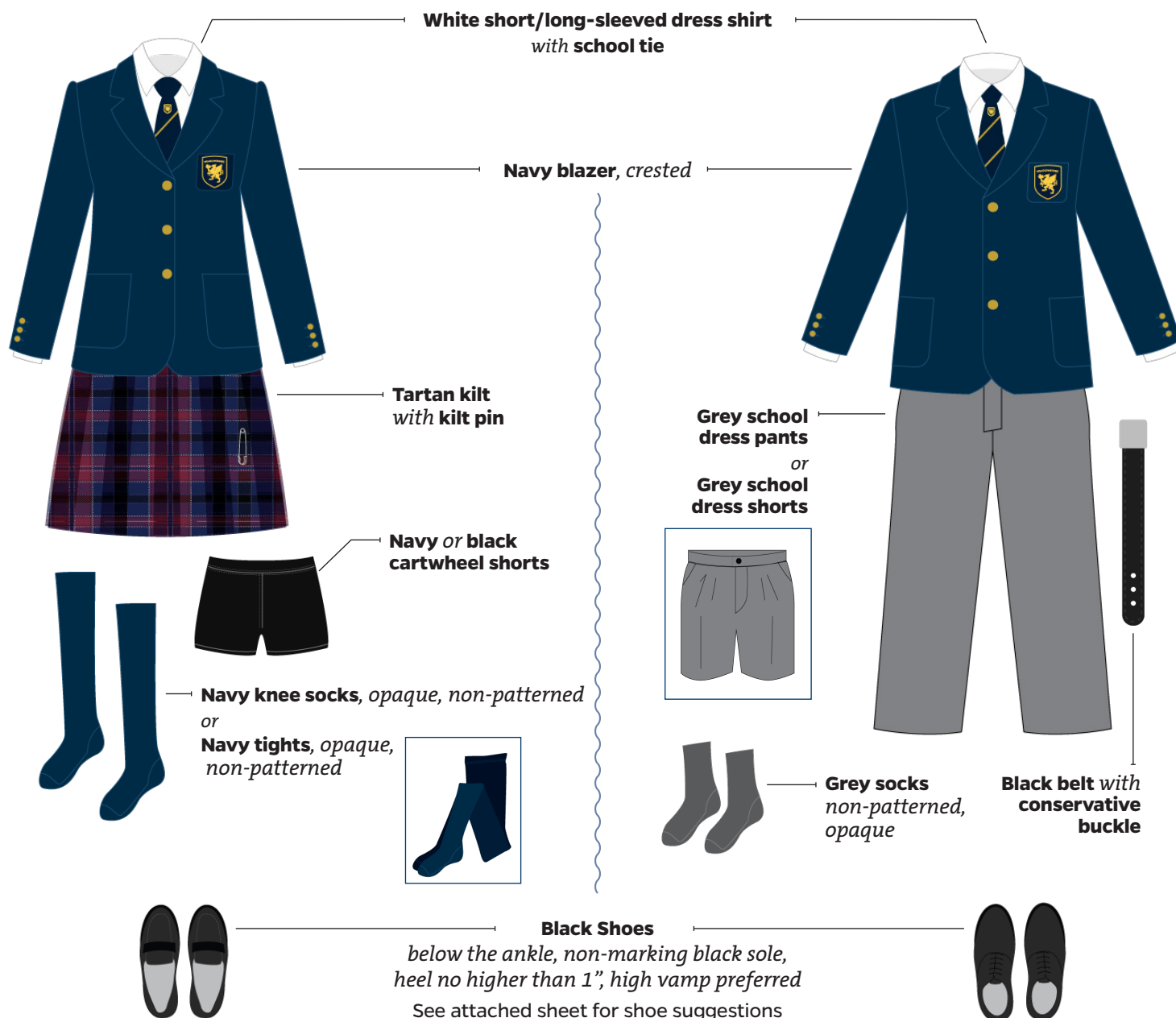
Looking for used uniforms? Visit the Gryphon's Emporium

Located on the second floor above our Uniform Shop, the Gryphon's Emporium is run by our Parent Guild volunteers. For questions email gryphonsemporium@meadowridge.bc.ca

MEADOWRIDGE SCHOOL

Grade 11 & 12 #1 Uniform

Mondays, Fridays & Special Events



Optional Add-On Items for #1 Uniform

1. Navy/Burgundy cardigan, crested
2. Navy/Burgundy pullover, crested
3. Navy/Burgundy vest, crested

Items 1, 2, and 3 must be worn with the white dress shirt and tie.



PLEASE NOTE The Meadowridge uniform is gender-neutral.

Grade 11 & 12 #2 Uniform

Mix and match any
top and bottom

Tuesday, Wednesday & Thursday

#2 Uniform Tops



Navy short/long-sleeved
golf shirt, crested



Hoodie/Grad Hoodie,
crested



Rugby Shirt,
crested



White short/long-sleeved dress shirt
with school tie



#2 Uniform Bottoms



Tartan kilt
with kilt pin

Navy or black
cartwheel shorts



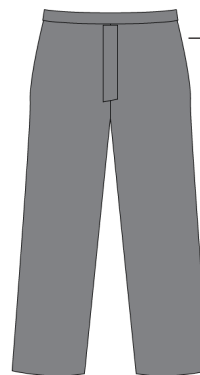
Navy knee socks,
opaque, non-patterned
or
Navy tights,
opaque,
non-patterned



Grey school
dress shorts



Grey socks
non-patterned,
opaque



Navy school
dress pants



Black
belt with
conservative
buckle



Navy socks
non-patterned,
opaque



Black Shoes

below the ankle, non-marking black sole,
heel no higher than 1", high vamp preferred
See attached sheet for shoe suggestions



Optional Add-On Items for #2 Uniform

1. Navy/Burgundy cardigan, crested
2. Navy/Burgundy pullover, crested
3. Navy/Burgundy vest, crested
4. Grad Tie, Grade 12 only

Items 1, 2, and 3 must be worn with the white dress shirt/tie or navy golf shirt. Item 4 must be worn with the white dress shirt.



PLEASE NOTE The Meadowridge uniform is gender-neutral.



MEADOWRIDGE SCHOOL

Grade 11 & 12 Dress Code

11 & 12

Why do we have uniforms and a dress code?

The dress code is intended to alleviate the pressure on students to conform to trends or fads and create a social setting where personality and intellect take precedence over fashion. It allows students to be free from social pressures and helps create a sense of belonging to Meadowridge. Please help us build pride in your school by ensuring you wear the proper clothing and maintain it in good order. Our appearance will reflect a positive expression in dress, grooming, and hygiene. It will at all times be modest, respectful of self and others, and appropriate for school and weather conditions.

What days to wear what uniform

Appropriate dress is expected during the school day (includes all breaks- recess, lunch, support blocks and after school), extra-curricular activities, and at all school sponsored functions.

#1 Uniform (Formal)

- Mondays and Fridays
- When representing the school
- Special Events (ex. all-school assemblies)
- Some field trips

#2 Uniform (Informal)

- Tuesdays, Wednesdays, and Thursday
- Some field trips

Uniform Infractions

Students will be informed immediately of any uniform infractions and are expected to make the appropriate changes to ensure all uniform infractions are addressed.

In the event of repeated occurrences, the student's advisory teacher will notify parents to address the matter. If the infraction still continues, the Middle School Principal or Associate Principal will arrange a meeting with the student, parents, and advisory teacher. Disciplinary action may follow. Parents may also be contacted should a student arrive to school without the appropriate uniform items.

How to wear the uniform

The uniform must be kept in good condition, i.e. clean, no rips, no large stains, etc. Regardless of what uniform you are wearing on a particular day, you are expected to wear the uniform properly (e.g. – proper shoes, shirt tucked in, appropriate tie/kilt length, etc.)

Tops (Shirts)

- Dress shirts must be tucked in at all times. Growing individuals should buy longer dress shirts to avoid them being untucked. The white dress shirt in the uniform is a plain, non-embroidered, non-designer, collared, Oxford cloth shirt
- Golf shirts can be tucked in or not, but if worn untucked they must be an appropriate length. The length of the shirt should be no longer than the wrist when arms are hanging to the sides

Bottoms (Kilts, pants, shorts)

- Kilts are to be worn no shorter than 3" (7.5 cm) above the knee. The 'knee' is defined as the center of the patella (knee cap)
- Shorts should be no shorter than the fingertips when arms are hanging at the sides.

Miscellaneous

- Hats are not worn in school, except in classes where they are part of a costume
- Undergarments must not show any insignia, lettering, designs, etc.
- Tattoos must not be visible at any time.

Arriving & Leaving School

- Upon leaving the bus or other vehicle to come to school, students must be in their full uniforms. Pajama bottoms or sweatpants worn under the kilt or shorts are not acceptable. Navy blue tights are an excellent alternative to the knee socks in the winter months

Theme Days & Spirit Days

On occasion, theme days (previously non-uniform) are held. During those days, students are expected to dress in accordance with the theme chosen for that day. Alternatively, students are welcome to wear their school uniform.

On Spirit Days Grade 11 and 12 students can either wear their House Shirt with appropriate non-uniform bottoms or the school uniform.

Lost & Found Items

It is imperative that all uniform items are clearly labeled with the students full name. If you accidentally take an item home that does not belong to you, please return it to its rightful owner. All items not claimed will be donated to charity at the end of each term and all non-labelled uniform items will be donated to the Gryphon's Emporium.

Dress Shoes

- Footwear must be worn at all times in school
- Solid black shoes are required (no colour accents, stitching, or outsoles)
- Must be below the ankle (no boots)
- Heels must be no higher than 2.5cm (1 inch)
- Leather, leather-like, and fabric shoes are allowed

Outerwear & Seasonal Weather

- Students who are cold in the school should wear their school sweaters, blazers, or other optional add-on uniform items
- Unbranded outerwear is only allowed during outdoor recess time in extreme weather
- Non-Meadowridge sweaters, sweatshirts, or any other shirt are not acceptable inside the school

Hairstyles & Jewelry

- Hairstyles, make-up, nail polish, and accessories (earrings, hair ties, jewelry, etc.) should be conservative (light or natural in color) and should not draw additional attention to a particular student
- Earrings must be no more than ½ inch in diameter and length and should be inconspicuous.
- Dangling or large earrings and multiple rings are not appropriate
- No other body or facial piercing is acceptable and students will be asked to remove them, regardless of the healing stage